



# Investor Presentation

Discover, Define, Develop

Precious Metals Summit, Zurich, November 2025

**TMX**  
LON:OMI

 **London**  
Stock Exchange

**TSX.V:OMI**

# Forward Looking Statements and Disclosures

## Disclaimer

This document has been issued by Orosur Mining Inc. (the "Company"). This document does not constitute or form part of any offer or invitation to sell or issue, or any solicitation of any offer to purchase or subscribe for, any securities of the Company, nor shall any part of it nor the fact of its distribution form part of or be relied on in connection with any contract or investment decision relating thereto, nor does it constitute a recommendation regarding the securities of the Company. In particular, this document and the information contained herein does not constitute an offer of securities for sale in the United States.

This document is being supplied solely for information. The information in this document has been provided by the Company or obtained from publicly available sources. No reliance may be placed for any purposes whatsoever on the information or opinions contained in this document or on its completeness. No representation or warranty, express or implied, is given by or on behalf of the Company or any of the Company's directors, officers or employees or any other person as to the accuracy or completeness of the information or opinions contained in this document and no liability whatsoever is accepted by the Company or any of the Company's members, directors, officers or employees nor any other person for any loss howsoever arising, directly or indirectly, from any use of such information or opinions or otherwise arising in connection therewith. Nothing in this document or in the documents referred to in it should be considered as a profit forecast. Past performance of the Company or its shares cannot be relied on as a guide to future performance.

All statements, other than statements of historical fact, contained in this presentation constitute "forward looking statements" within the meaning of applicable securities laws, including but not limited to the "safe harbour" provisions of the United States Private Securities Litigation Reform Act of 1995 and are based on expectations estimates and projections as of the date of this presentation. Forward-looking statements include, without limitation, the exploration plans in Colombia, Argentina and Nigeria; the ability for the Company's wholly owned subsidiary Loryser to conclude its creditors agreement (Creditors Agreement) successfully in Uruguay as well as continuation of the business of the Company on a going concern and other events or conditions that may occur in the future. The Company's continuance as a going concern is dependent upon its ability to obtain adequate financing and to reach a satisfactory conclusion to the Creditors Agreement in Uruguay. These material uncertainties may cast significant doubt upon the Company's ability to realize its assets and discharge its liabilities in the normal course of business and accordingly the appropriateness of the use of accounting principles applicable to a going concern. There can be no assurance that such statements will prove to be accurate. Actual results and future events could differ materially from those anticipated in such forward-looking statements. Such statements are subject to significant risks and uncertainties including, but not limited, those as described in Section "Risks Factors" of the Company's most recent Management's Discussion and Analysis. The Company disclaims any intention or obligation to update or revise any forward-looking statements whether as a result of new information, future events and such forward-looking statements, except to the extent required by applicable law.

## Qualified Person's Statement

The information in this presentation was compiled, reviewed and verified by Mr. Brad George, BSc (Geology and Geophysics), MBA, Member of the Australian Institute of Geoscientists (AIG), CEO of Orosur Mining Ltd and a qualified person as defined by National Instrument 43-101.

For further details regarding any of Orosur's projects, please refer to the technical reports available under Orosur company profile, or on SEDAR at [www.sedar.com](http://www.sedar.com)

This document is provided for general information only and does not purport to contain all the information that may be required to evaluate the Company or its securities. The information in this document is provided as at the date of this document (unless stated otherwise) and is subject to updating, completion, revision and is not independently verified. No reliance may be placed for any purpose whatever on the information or opinions contained or expressed in this document or on the accuracy, completeness or fairness of such information and opinions.



## Qualified Person's Statement

The information in this presentation was compiled, reviewed and verified by Mr. Brad George, BSc (Geology and Geophysics), MBA, Member of the Australian Institute of Geoscientists (AIG), CEO of Orosur Mining Ltd and a qualified person as defined by National Instrument 43-101.

For further details regarding any of Orosur's projects, please refer to the technical reports available under Orosur company profile, or on SEDAR at [www.sedar.com](http://www.sedar.com)

This document is provided for general information only and does not purport to contain all the information that may be required to evaluate the Company or its securities. The information in this document is provided as at the date of this document (unless stated otherwise) and is subject to updating, completion, revision and is not independently verified. No reliance may be placed for any purpose whatever on the information or opinions contained or expressed in this document or on the accuracy, completeness or fairness of such information and opinions.

# Corporate Snapshot



## Board of Directors

Louis Castro: Executive Chairman  
Brad George: CEO  
Thomas Masney: Non-Executive Director  
Nick Von Schirnding: Non-Executive Director

## Key Management

Joaquin Sarroca: VP Commercial and Legal  
Liliana Munoz: Colombia Manager  
Jeronimo Janez: Senior Geologist  
Ernesto Slavutsky: Senior Geologist  
Dr Warwick Crowe: Technical advisor  
Omar Gonzalez: CFO



391m Shares

12.8m Options/RSU/DSU

20.3m Warrants

US\$17m Cash  
(3rd Nov 2025)

US\$102m Market Cap  
(3rd Nov 2025)

# Key Projects



## Anzá - Colombia

- 330km<sup>2</sup> of licences and applications in Mid-Cauca Belt
- 100% owned.
- Pepas prospect moving to resource
- APTA prospect well advanced
- El Cedro porphyry being defined, but undrilled

## El Pantano – Argentina

- 550km<sup>2</sup> in Deseado Massif
- 51% owned, but near-term pathway to 100%
- Drilling about to commence

# Investment Thesis

- Well funded
- Large land holdings in key, endowed regions – right assets at the right time.
- The right deals – 100% ownership or path thereto
- Multiple prospects at different stages – resource through to grass roots
- High grade Pepas prospect offers potential for nearer term, low-cost production.
- Dual parallel streams – resource definition and exploration; Pepas and APTA near resource and two large scale early-stage projects about to be drilled.



# Anza Project, Colombia

330km<sup>2</sup> in prolific middle Cauca belt

## Three Key Prospects

APTA

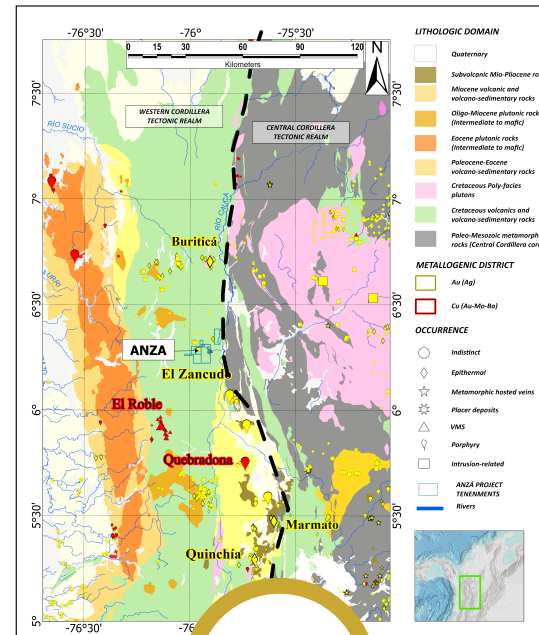
38,000m of drilling  
Close to resource,  
needs modelling

PEPAS

5,000m drilled, defining  
thick, high grade gold  
mineralisation from  
surface

EL  
CEDRO

Gold Porphyry system defined,  
mapping & geochemical sampling  
complete. Ready to drill



One of largest land  
holders in  
Colombia's main  
gold belt

- All on the same granted license
- 100% ownership since Dec 2024
- Mostly unexplored

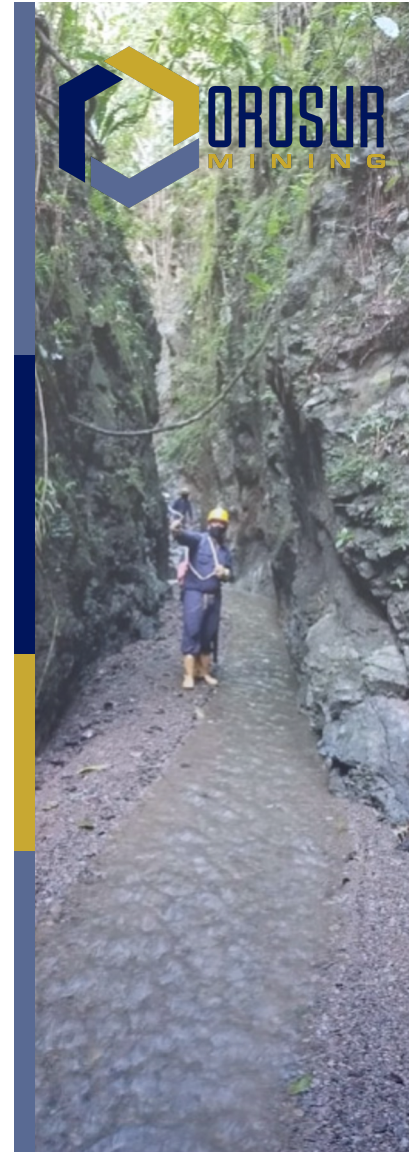
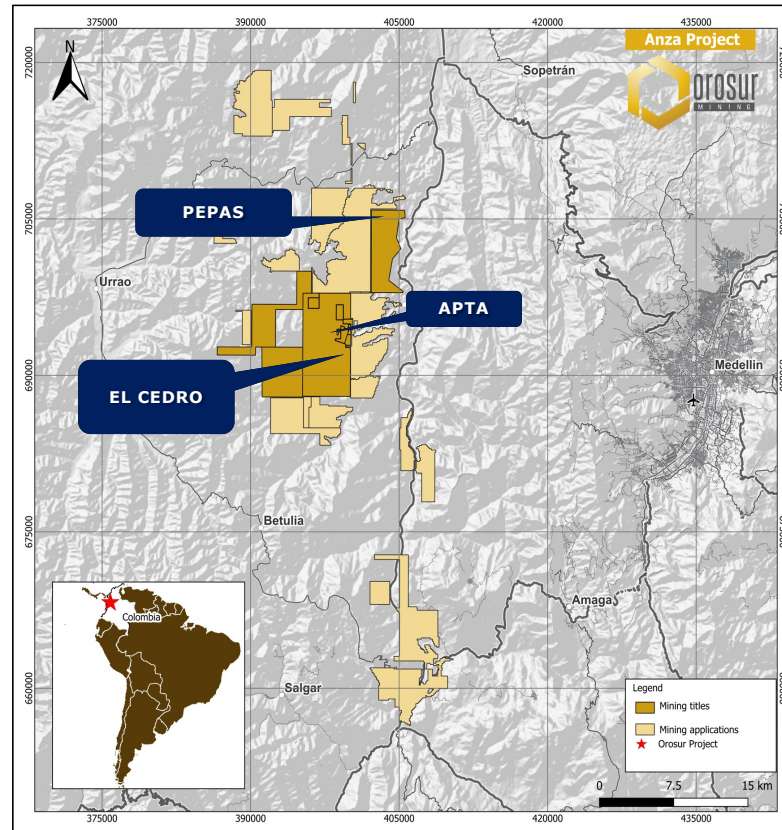
# Anza Project, Colombia

Returned to 100% ownership in Dec 2024

Immediate success at Pepas – moving to MRE

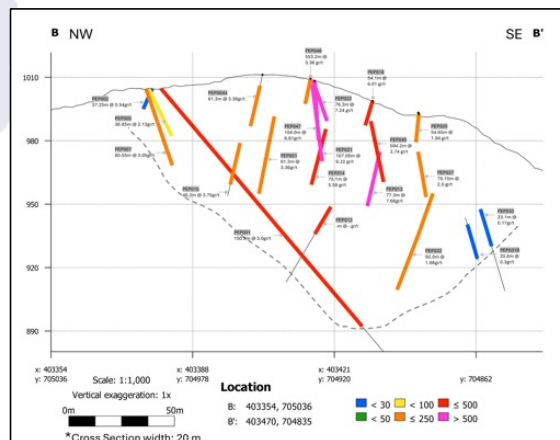
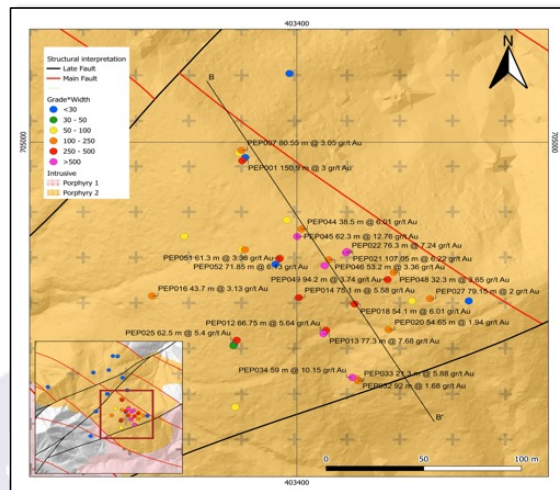
APTA on the brink of MRE?

El Cedro untouched but shows potential



# Pepas – High Grade from Surface

Hole Number	From (m)	To (m)	Interval (m)	Grade Au (g/t)	grade x width gm
PEP001	0	150	150	3	450
PEP005	0	36.85	36.85	2.13	78
PEP007	0	80.3	80.3	3.05	245
PEP012	0	66.75	66.75	5.64	376
PEP013	0	77.3	77.3	7.68	594
PEP014	0	75.1	75.1	5.58	419
PEP015	23.5	63.7	40.2	3.75	151
PEP016	61.6	105.3	43.7	3.13	137
PEP017	56.1	96.3	40.2	2.06	83
PEP018	0	54.1	54.1	6.01	325
PEP019	0	44.3	44.3	1.63	72
PEP020	0	54.65	54.65	1.94	106
PEP021	0	107.1	107.05	6.22	666
PEP022	0	76.3	76.3	7.24	552
PEP023	0	15	15	1.7	26
PEP024	9.24	15.6	6.35	1.99	13
PEP025	16.5	79	62.5	5.4	338
PEP026	43.6	72	28.4	2.52	72
PEP027	1	80.15	79.15	2	158
PEP028	29.5	60.85	31.35	1.61	50
PEP032	0	92	92	1.68	155
PEP033	0	21.3	21.3	5.88	125
PEP034	36	95	59	10.15	599
PEP035	0	11.4	11.4	2.71	31
PEP041	34.4	66.1	31.75	2.01	64
PEP044	5.8	44.3	38.5	6.01	231
PEP045	9.5	71.8	62.3	12.76	795
PEP046	0	53.2	53.2	3.36	179
PEP047	0	104	104	6.61	687
PEP048	0	32.3	32.3	3.65	118
PEP049	0	94.2	94.2	3.74	352
PEP050	0	34	34	2.33	79
PEP051	11.2	72.5	61.3	3.36	206
PEP052	9.4	81.25	71.85	6.13	440
PEP054	20	40.6	20.6	2.01	41
PEP055	22.05	69.3	47.25	15.25	721
PEP057	29.80	46.9	17.1	5.47	94
PEP058	32.95	67.8	34.85	3.42	119
PEP060	15.25	78.8	63.55	8.23	523
PEP064	25.65	75.6	49.95	4.29	214



Intermediate sulphidation  
epithermal system

Porphyry association

Truncated by post-mineralisation  
faulting. Small part of a bigger  
system?

Drilling focussed on moving core  
to MRE – little broader exploration  
yet

Will expand exploration footprint  
post MRE

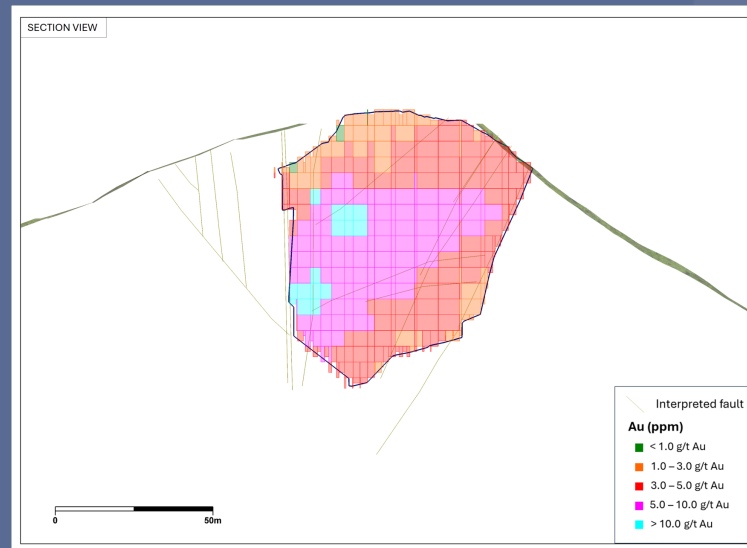
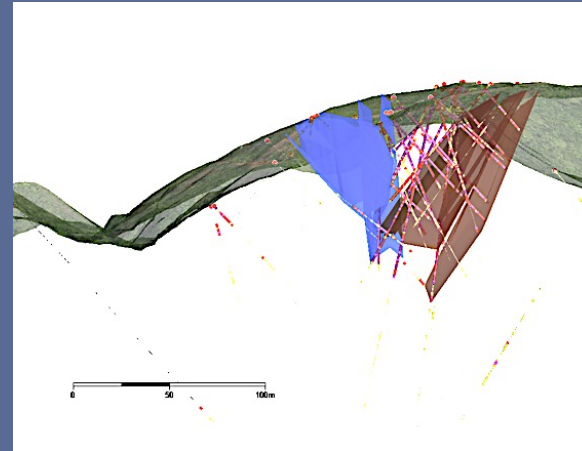
# Pepas – Moving Fast

55 holes drilled post transaction - c5000m

Resource consultants on site early Nov to start MRE process

Metallurgical hole complete, testing about to begin

Roads, transport and logistics to be examined with view to third party processing

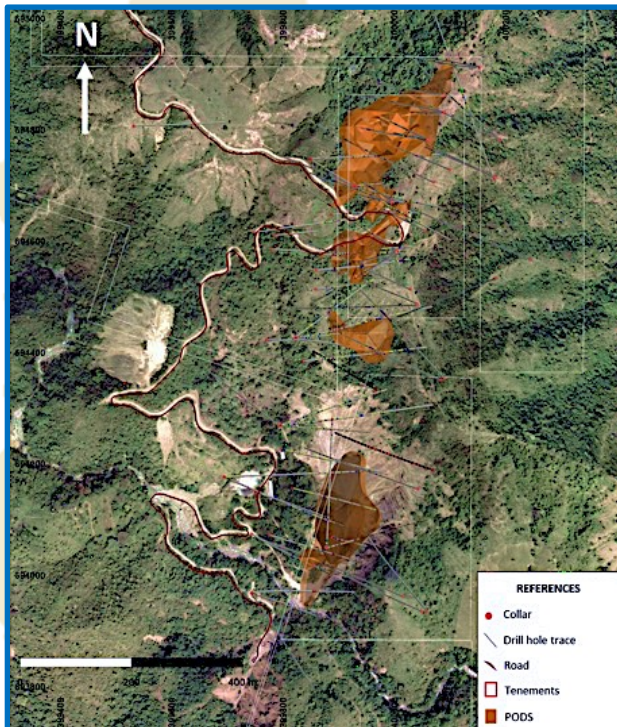


## Why?

Pepas is unusual, what it is, where it is, when it is!

- High grade
- High gold price
- At surface
- Low strip
- Power to site
- Close to main highway
- Proximity to several third-party mills

# APTA – Final Mile



Hole No	From (m)	To (m)	Interval (m)	Aug/t
MAP011	213	219	6	18.26
MAP020	145	186	41	3.85
MAP021	224	242	18	14.14
MAP033	157	179	22	10.42
MAP036	198	227	29	3.88
MAP038	172	212	40	14.09
MAP048	181	195	14	40.37
MAP054	41	59	18	2.96
	97	110	13	4.36
	144	149	5	17.76
MAP055	177	190	14	4.89
MAP060	222	247	25	4.86
MAP062	217	240	23	5
MAP070	221	233	12	5.28
	284	298	14	5.02
	286	292	6	9.62
MAP072	184	255	71	3.53
MAP073	271	293	22	6.02
MAP076	228	240	12	5.39
MAP079	270	294	24	17.4
MAP082	227	256	29	2.5
MAP086	179	183	4	6.12
	215	234	19	2.85
MAP089	275	334	59	9.61
MAP090	180	186	6	9.91
MAP091	222	284	62	2.05

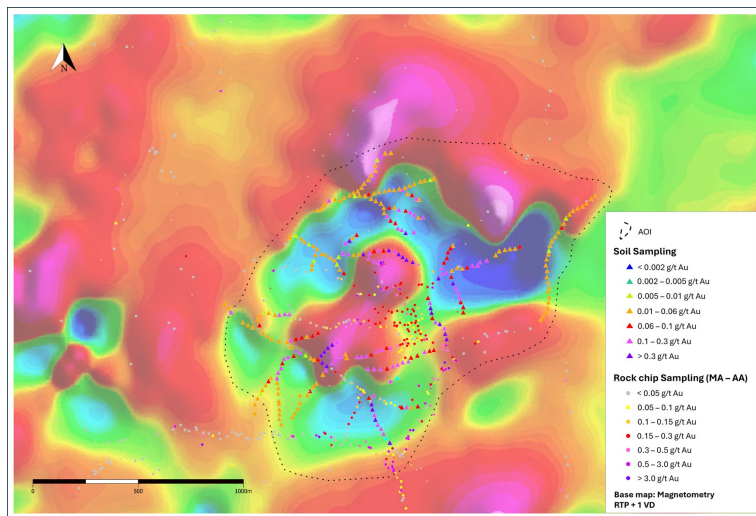


38,000m of drilling

New geological model developed

Drilling soon to confirm model and possibly move to MRE in 2026

# El Cedro – Gold Porphyry

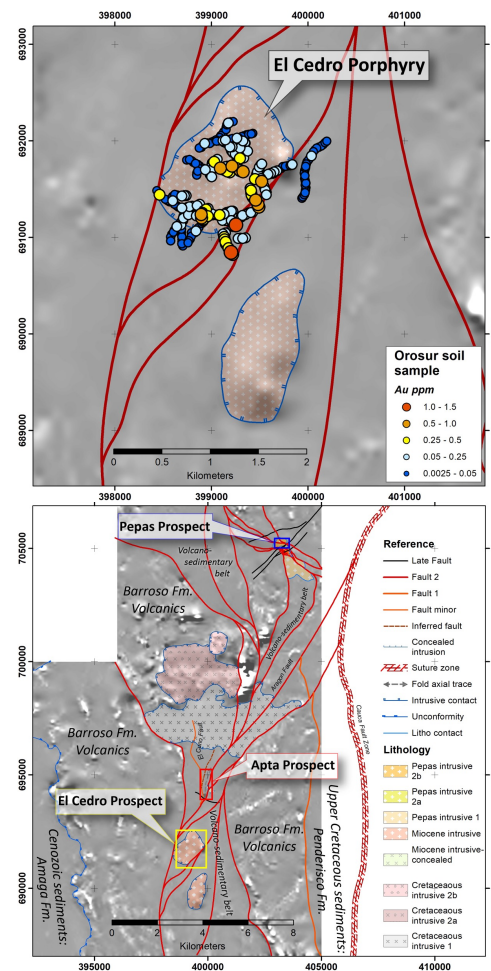


Soil sampling showing over 1g/t Au in soils. Rock chips up to 10g/t Au.

Classic porphyry zonation.

Second porphyry identified

Associated epithermal systems enhance grade



Large gold porphyry system – barely touched

Soil sampling just completed – high grade gold at surface

Airborne mag/spec November

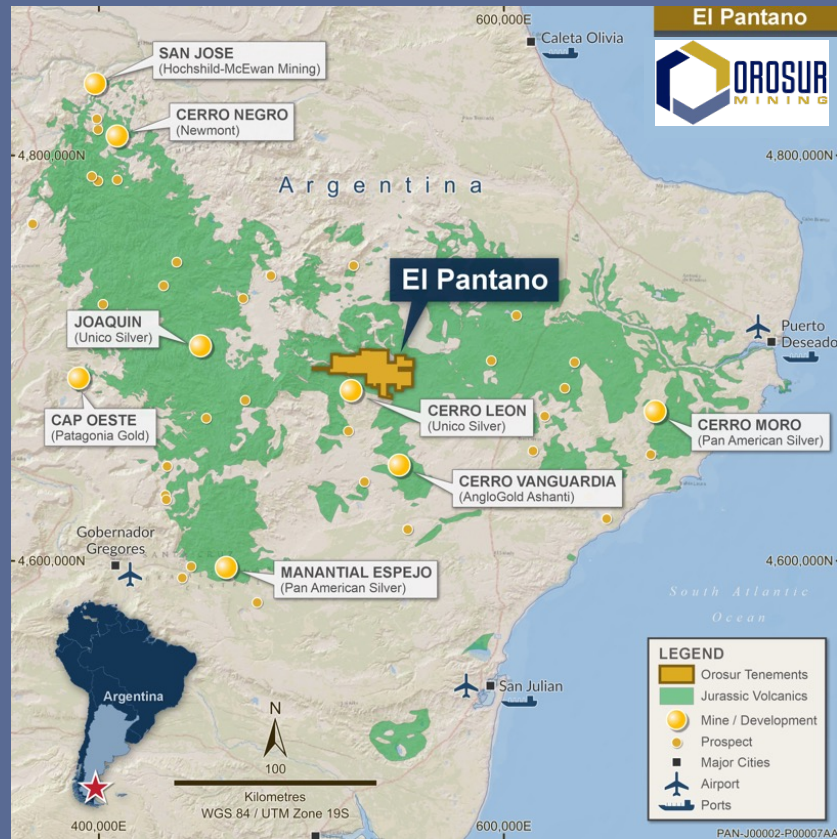
Plan to drill in early 2026

# Anzá – Tentative Timeline\*



\* Tentative only, all subject to change

# El Pantano - Argentina



Large land holding – 550km<sup>2</sup> in Deseado Massif



Earned 51%

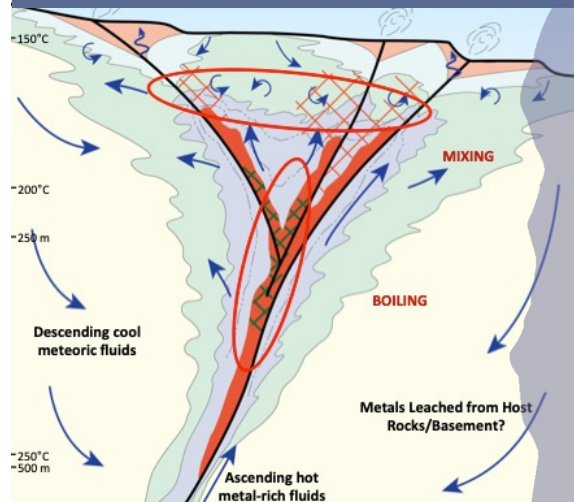
Current drill program will move us close to 100%

Optionality

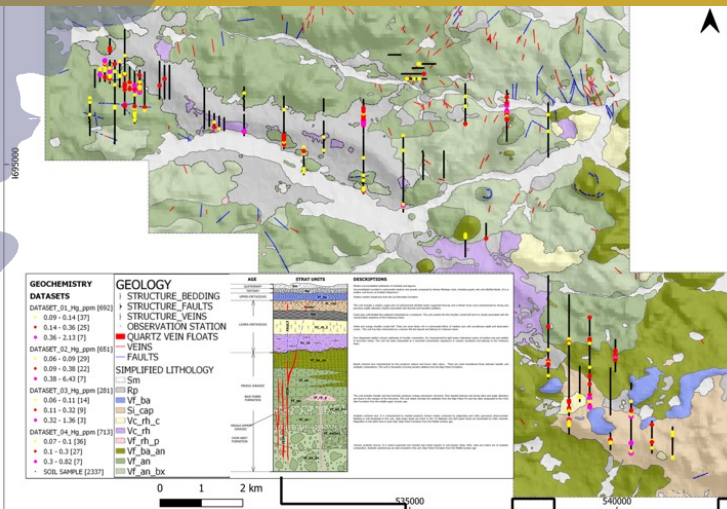
# El Pantano – First Drilling



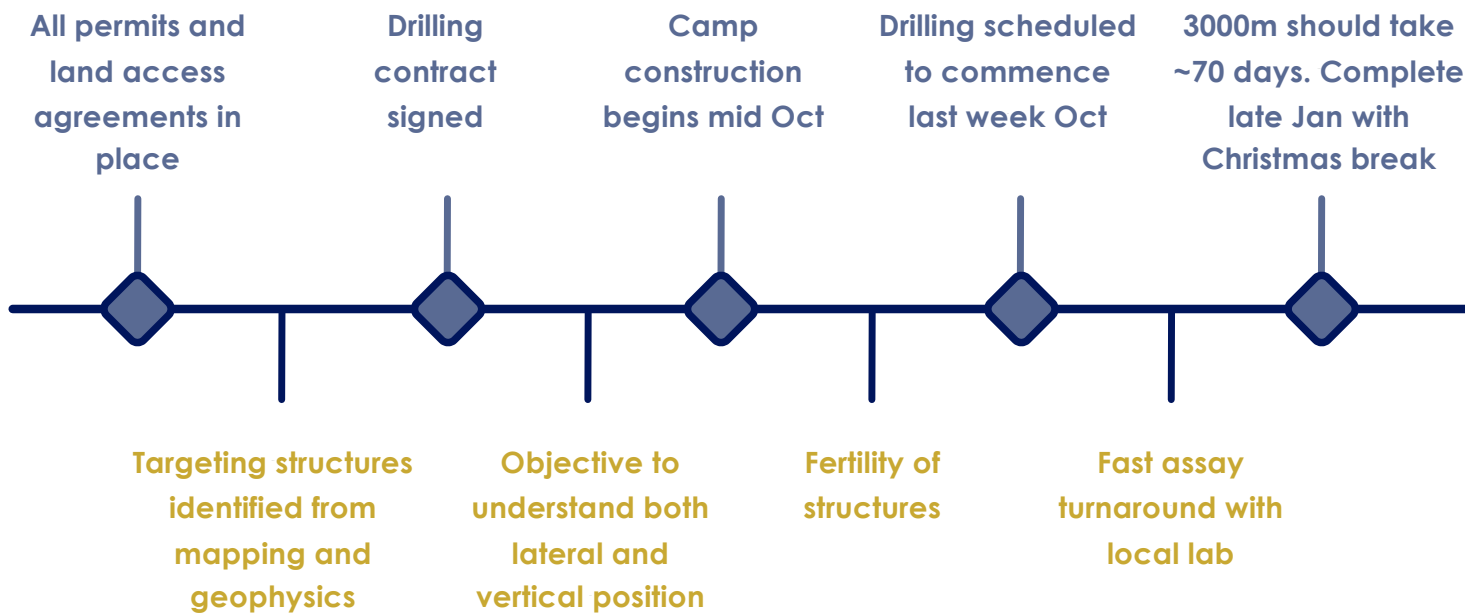
## Rift related, low-sulphidation model



First drilling program is purely geological  
Multiple phases likely to be required.  
Cerro Negro was a blind discovery under a barren silica cap by the third company to work the project



# El Pantano Timeline





Thank You

Tel: +1 778-373-0100 | [info@orosur.ca](mailto:info@orosur.ca) | [www.orosur.ca](http://www.orosur.ca)

TMX  
LON:OMI

 London  
Stock Exchange

TSX.V:OMI