



# GREENHEART GOLD

*A legacy of mineral resource discovery in the  
Guiana Shield*

## Corporate Presentation

Precious Metals Summit, Beaver Creek

September 2025



## Cautionary Statements

Greenheart Gold Inc. (“Greenheart”) is an early-stage mineral exploration company subject to considerable risks and uncertainties, including financial, operational, environmental and political risks which even a combination of careful evaluation, experience and knowledge may not eliminate. Few properties that are explored are ultimately developed into producing mines. Investment in Greenheart should be considered highly speculative.

All statements, other than statements of historical fact, contained in this presentation constitute “forward-looking information” and “forward-looking statements” within the meaning of certain securities laws and are based on expectations and projections as of the date of this presentation. Forward-looking statements contained herein include, without limitation, those related to objectives and corporate strategy of Greenheart, potential favorable setting and mineralization of Greenheart’s projects, , timing of planned exploration activities, potential acquisition of other projects, and other statements relating to business prospects of Greenheart. Forward-looking statements are not a guarantee of future performance and are based upon a number of estimates and assumptions of management, in light of management’s experience and perception of trends, current conditions and expected developments, as well as other factors that management believes to be relevant and reasonable in the circumstances, including, without limitation, assumptions about: the ability to raise additional capital on reasonable terms to pursue planned exploration programs, exercise the option to acquire the projects and acquire interest in other mineral projects; the results of exploration programs; future price of gold; political, regulatory and social stability; the receipt of governmental and third party approvals; licenses and permits being received and/or renewed on favourable terms; stability in financial and capital markets; and availability of equipment and personnel.

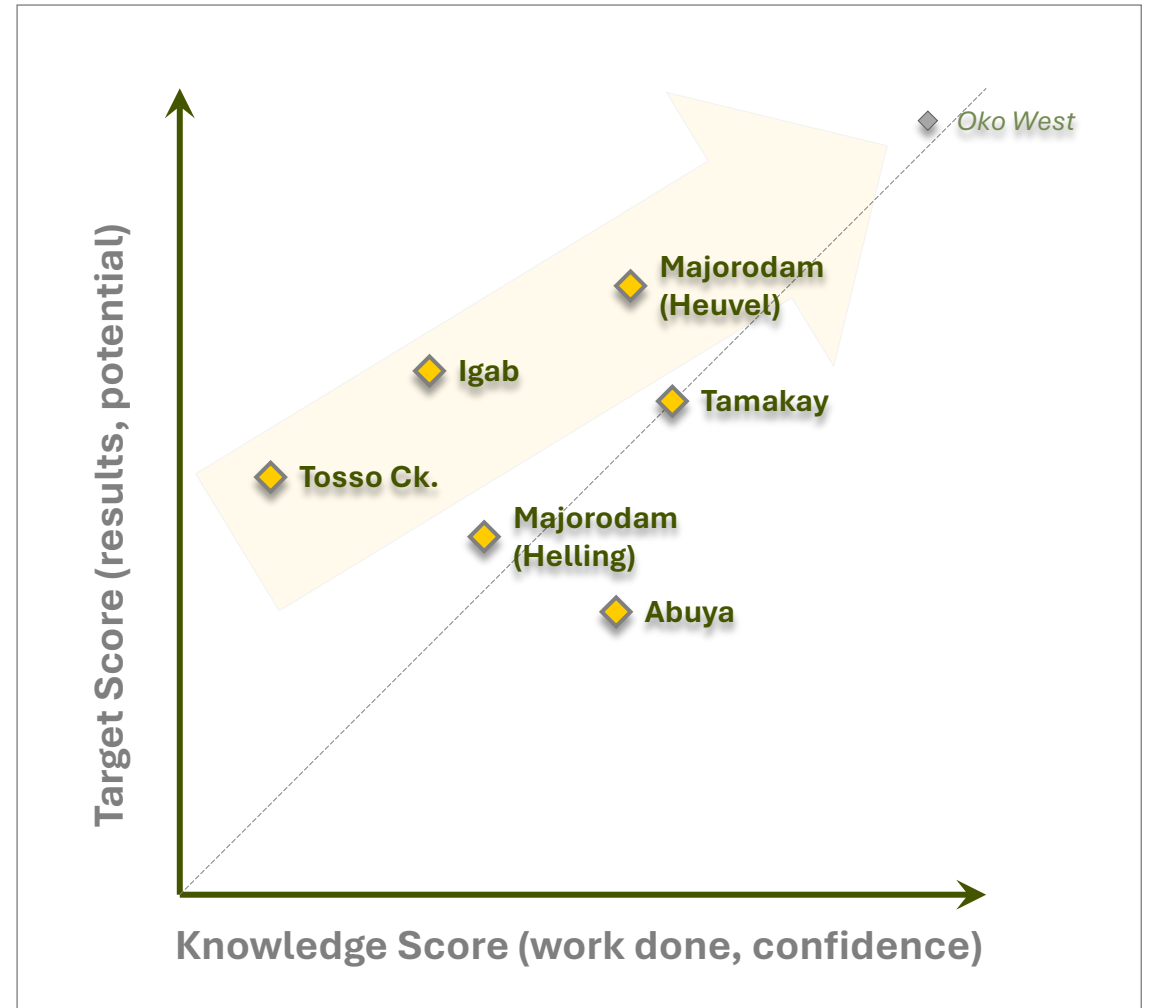
Many of these uncertainties and contingencies can directly or indirectly affect, and could cause, actual results to differ materially from those expressed or implied in any forward-looking statements. By their very nature, forward-looking statements involve inherent risks and uncertainties, both general and specific in nature, including among others, those risks and uncertainties set forth in the Company’s audited consolidated financial statements and related notes for the initial period from April 19, 2024 to December 31, 2024 and the associated management’s discussion & analysis, and other documents and reports filed by the Company with Canadian securities regulators available under the Company’s profile on SEDAR+ at [www.sedarplus.ca](http://www.sedarplus.ca), and the risk that estimates, forecasts, projections and other forward-looking statements will not be achieved or that assumptions do not reflect future outcomes. Forward-looking statements are provided for the purpose of providing information about management’s expectations and plans relating to the future. Readers are cautioned not to place undue reliance on these forward-looking statements as a number of important risk factors and future events could cause the actual outcomes to differ materially from the beliefs, plans, objectives, expectations, anticipations, estimates, assumptions and intentions expressed in such forward-looking statements. The Company cautions that the list of factors set forth in the Company’s filings that may affect future results is not exhaustive, and new, unforeseeable risks may arise from time to time. The Company disclaims any intention or obligation to update or revise any forward-looking statements or to explain any material difference between subsequent actual events and such forward-looking statements, except to the extent required by applicable law.

## Qualified Person

The technical information in this presentation has been reviewed and approved by Justin van der Toorn, the President and CEO of Greenheart. Mr. van der Toorn (CGeol FGS, EurGeol) is a qualified person under Canadian *National Instrument 43-101- Standards of Disclosure for Mineral Projects*.

# Focused Exploration Strategy

- **Greenheart Gold (GHRT)** – spin out following Reunion Gold & G-Mining Ventures merger in July 2024
- **Leveraging strong local relationships and technical expertise** – significant management experience operating in Guyana and Suriname
- **Operating in exploration and mining friendly jurisdictions of Guyana & Suriname** – great geological potential, underexplored, little or no prior modern exploration on most projects
- **Maintaining a portfolio of 5 to 6 projects** – multiple opportunities for success, rapid initial assessment (9-12 months), advance strong projects
- **Uniquely positioned with strong treasury (C\$ 37 million)** – significant treasury supports exploration strategy leveraging extensive in-house financing expertise and strong shareholder register





# Executive Team & Board of Directors

---

## DAVID FENNELL (EXECUTIVE CHAIRMAN)

>40 years' experience in the mining industry, the founder and former chairman of Reunion Gold Corporation, instrumental in the discovery of the Omai and Rosebel mines during his tenure as the founder of Golden Star Resources Ltd. , former Chairman and CEO of Hope Bay Gold, and the current Vice-chairman of G Mining Ventures.

---

## JUSTIN VAN DER TOORN (DIRECTOR, PRESIDENT & CEO)

Professional geologist (CGeol FGS), with >20 years' experience in gold and base metal exploration in epithermal, porphyry and orogenic mineralization styles across Europe, North America and the Guiana Shield. Previously served as Vice President, Exploration for Reunion Gold Corporation.

---

## DOUG FLEGG (SENIOR V.P., CORPORATE DEVELOPMENT)

>35 years' experience in mining and mining finance with senior roles in research, portfolio management and global equity sales. Experience includes Managing Director Global Mining Sales at BMO Capita Markets, and most recently Business Development Advisor for Reunion Gold Corporation.

---

## ALAIN KRUSHNISKY (CFO)

>30 years' experience in the mining sector, including 10 years with Cambior Inc. (now IAMGOLD) as VP & Controller. Previously CFO of Reunion Gold Corporation since 2004, as well as a financial consultant for other publicly listed exploration companies. Graduate in Commerce from the University of Ottawa and a CPA.

---

## CAROLE PLANTE (CORPORATE SECRETARY)

>30 years' experience in the mining sector acting as general counsel and corporate secretary for publicly traded companies operating in South and North America, Africa, Australia and Europe. Served as General Counsel and Corporate Secretary of Reunion Gold Corporation since its inception in 2003, and a member of the Québec Bar.

---

## ADRIAN FLEMING (DIRECTOR)

Professional geologist (AusIMM) with >40 years' experience in exploration and development stage companies across North and South America (including the Guiana Shield), and Australia. Co-founder of Underworld Resources (acquired by Kinross), founding director of Northern Empire Resources (acquired by Coeur Mining), and a former director of Reunion Gold Reunion Gold Corporation.

---

## RICHARD COHEN (DIRECTOR)

Has worked in the investment industry since 1983, most recently as Managing Director at Dundee Goodman Merchant Partners, MD at Dundee Securities, and previously as MD of Primary Capital Inc. with a focus on financing and M&A advisory roles. Mr. Cohen is a graduate from UBC in Mineral Engineering, an MBA from Western University, and a former director of Reunion Gold Corporation.

---

## ELAINE BENNETT (DIRECTOR)

A chartered professional accountant with >30 years' experience as a financial executive in the mining industry including financial reporting, mergers and acquisitions, corporate restructuring, and mine construction. Previous roles include CFO at Sabina Gold & Silver Corp., VP Finance and CFO at Miramar Mining Corp. (acquired by Newmont), and a former director of Reunion Gold Corporation.

---

## KARIM NASR (DIRECTOR)

Over 25 years of experience in corporate finance and investments, especially in the technology, media and telecom ("TMT"), and mining sectors. He is currently Chief Investment Officer and Managing Partner at G Mining Capital. Previously, Mr. Nasr had joined La Mancha Resource Capital in 2018 as Chief Financial Officer and was Managing Partner & co-Chief Investment Officer from 2019 to October 2024. Mr. Nasr holds a master's degree in management from the University of Paris IX.

---

## JULIE-ANAÏS DEBREIL (DIRECTOR)

V.P. Geology and Resources for G Mining Ventures and a Professional geologist in Quebec and Ontario (OGQ, PGO) with nearly 20 years of experience in exploration, mine development and resource management; lead teams delivering major discoveries, operational improvements and strategic growth; holds a Ph.D. in Economic Geology from INRS-ETE (Quebec) and previously held positions at G Mining Services and Premier Gold Mines.



# GHRT Milestones From Inception

## H2 2024

**Spun out from RGD:**  
**July 15, 2024**

**Financings: C\$15 m on  
spinout, C\$ 36 m  
bought deal Oct, 24**

**GHRT commence  
trading TSXV Sept, 24**

**Optioned 3 projects:**

**Majorodam: Jul, 24**  
begin soils, mapping  
and trenching

**Abuya: Jul, 24** begin  
soils, mapping,  
trenching

**Igab: Dec, 24** begins  
soils, mapping,  
trenching

## H1 2025

**Majorodam: 3** broad  
soil anomalies tested  
with 2,100 m RC drill  
program, in May, 24  
released 3 significant  
intercepts for follow-up,  
project expanded to 250  
sq. km.

**Igab:** channel sample of  
exposed outcrop at  
Lemon Tree assayed  
1.36 g/t Au over 31.0 m,  
trenching and infill soil  
programs continue

**Tosso Creek: Acquired  
Feb, 25** 400 by 50 m grid  
soils started

**Abuya:** phase 2 soils  
completed, trenching  
commenced

## Q3 2025

**Majorodam Aug, 25 a  
2,500 phase 2 DD  
program begun** to  
follow up “highlight” RC  
results; trench in drill  
roadcut intercepts 18.0  
m @ 6.39 g/t Au  
between and on strike  
with 2 RC holes

**Tamakay: Aug, 25 1,200  
m DD program started**  
to test known gold  
quartz veins

**Igab: infill soils begin  
on northern soil  
targets,** Lemon Tree  
further defined

**Tosso Creek: infill  
soils reveal large high  
grade soil anomalies**

## Q4 2025

**Majorodam and  
Tamakay drill results  
expected**

**Igab: drilling expected  
to commence Oct, 25**  
infill soils and trenching  
ongoing on 4  
northern/western  
targets

**Tosso Creek: infill soils  
to be completed** and  
trenching mapping and  
sampling programs to  
begin, **initial drill  
program targeted for  
early Q1, 26** if results  
continue to warrant

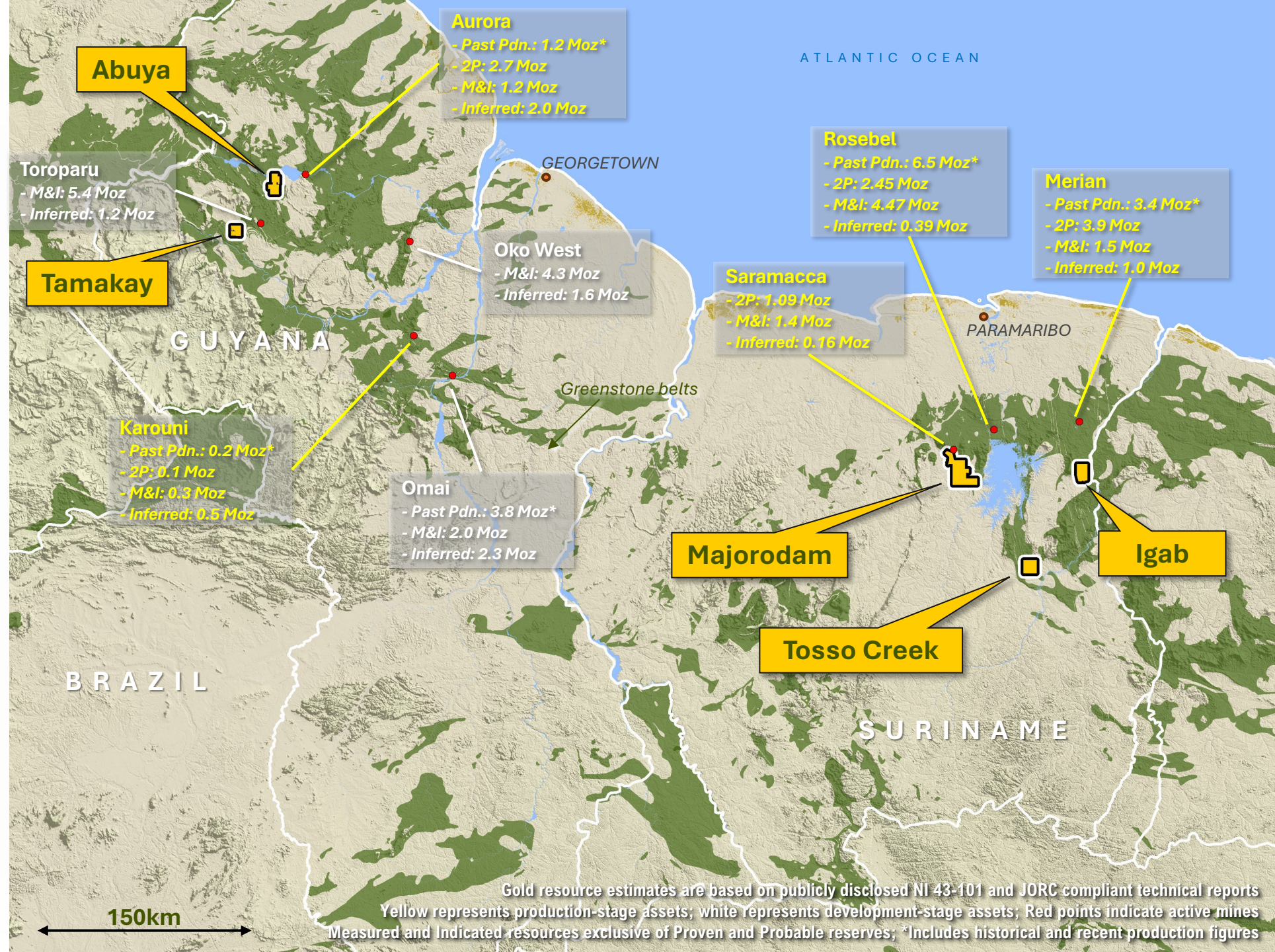


# Highly Prospective Exploration Portfolio

- Project generation activities continue in both Guyana and Suriname

Greenheart Gold's projects:

- Majorodam (Suriname)
- Igab (Suriname)
- Tosso Creek (Suriname)
- Abuya (Guyana)
- Tamakay (Guyana)







GREENHEART  
GOLD

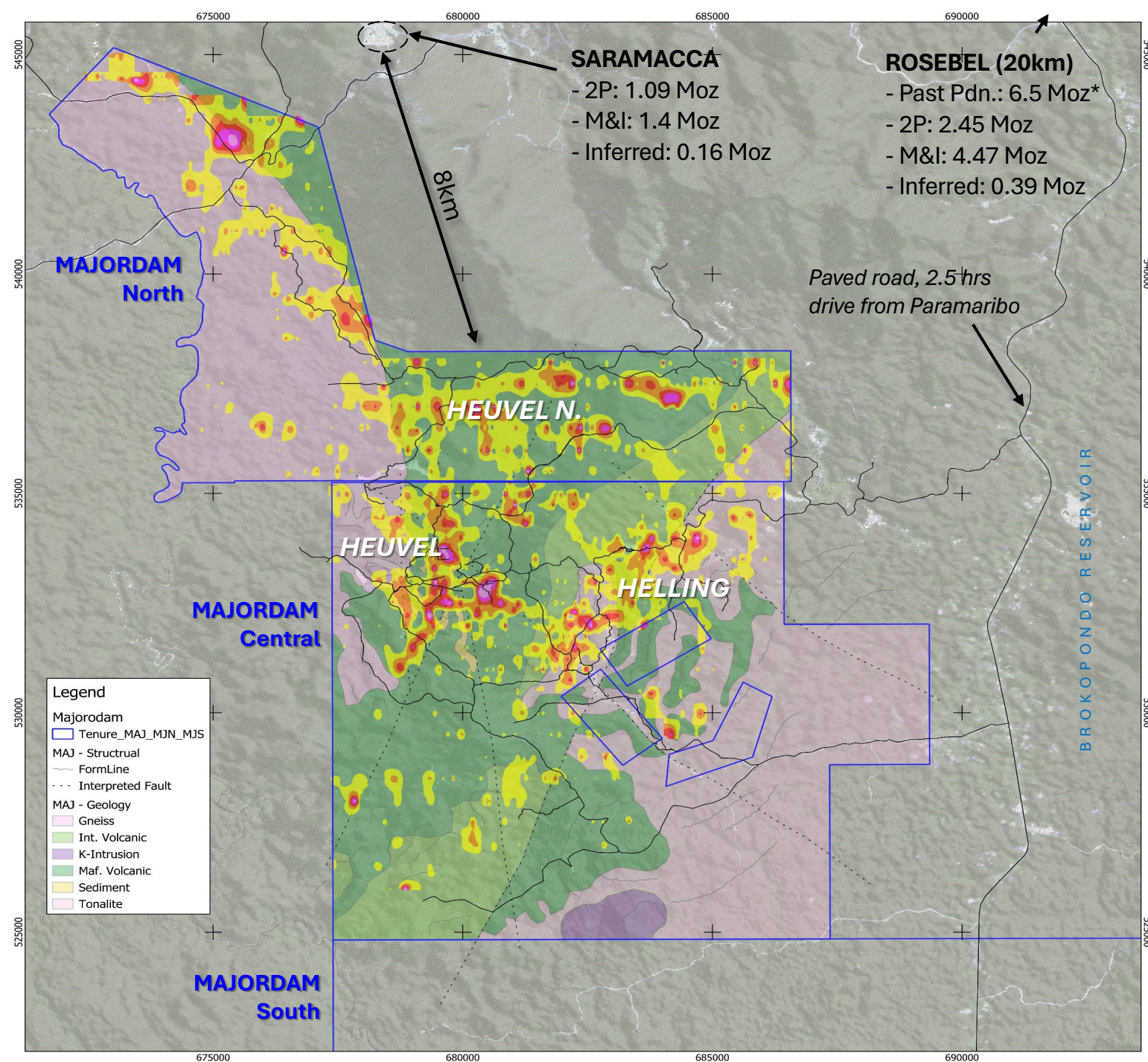
# MAJORODAM (SUR)

*Trench T-029 intersected 18.0 m @ 6.39 g/t Au including 4.0 m @ 24.07 g/t Au*



# Project Geology Location & History

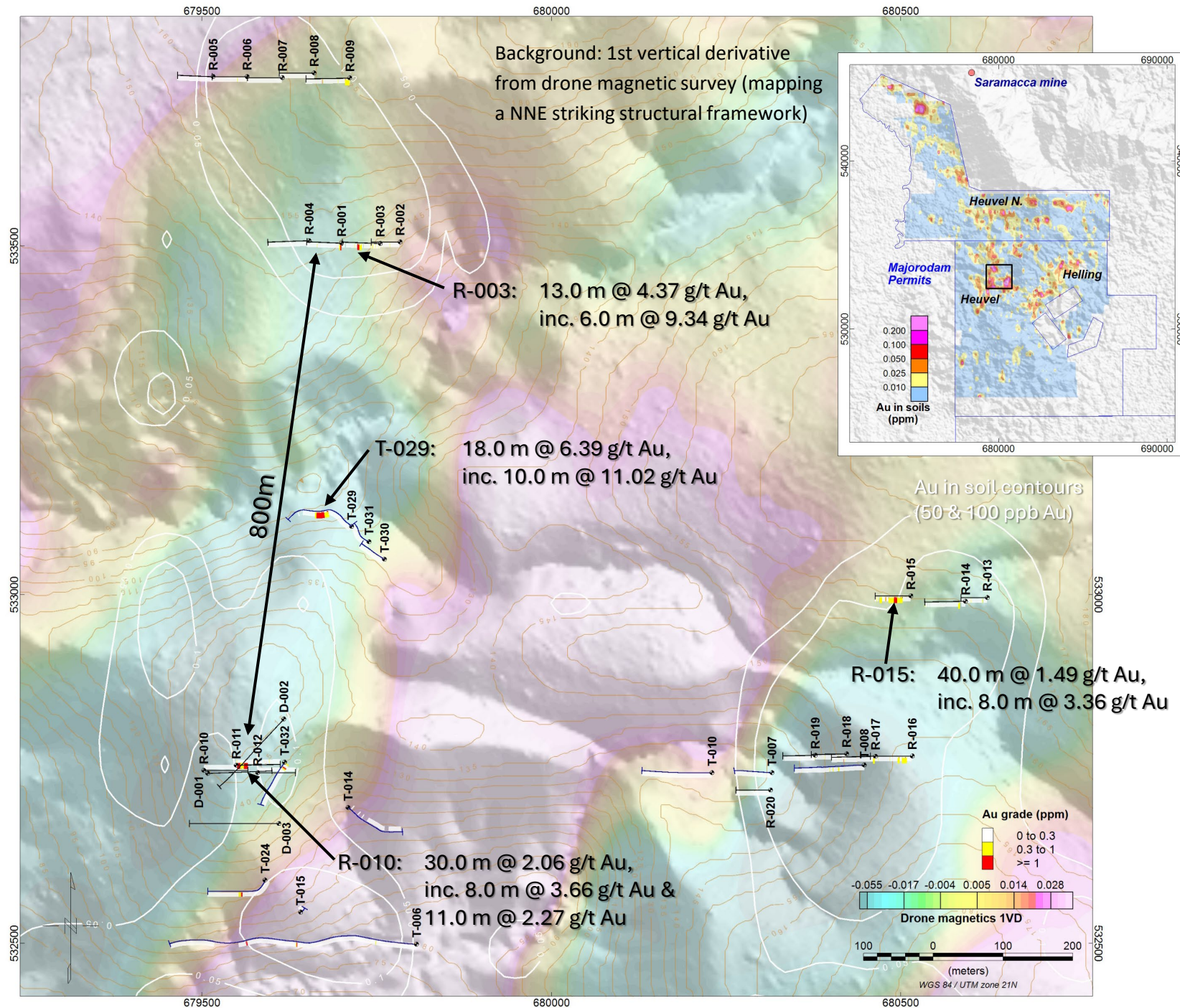
- Covering 250 sq km of prospective greenstone belt, consisting of meta-volcanic and meta-sedimentary units folded between granite intrusions.
- 8km south of the Saramacca deposit (**2P: 1.1 Moz Au @ 1.9 g/t Au**) same Greenstone belt, 25 km from Rosebel Mill.
- Located 2.5hrs drive south of Paramaribo (120km) and 20 min off a paved road. GHRT has an option to acquire 100% of the project.
- Minimal historical exploration, airborne magnetic & radiometric survey flown in 2019.
- Active alluvial mining operations on the project for past 15 years, with minor historical activity noted in 1970s.





# Heuvel Phase Two Drill Program underway

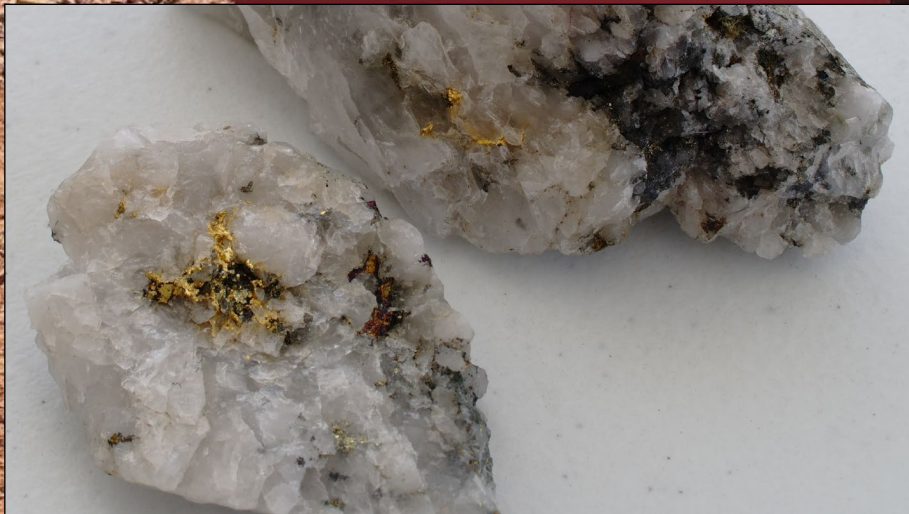
- 2,500 m Phase 2 Diamond Drill Program
- Follow up and expand on the previous significant intervals from Phase 1 RC drilling (Q1 2025)
- **Recently announced results from trench T-029**  
**18.0 m @ 6.39 g/t Au**
  - Located midway along the interpreted strike between RC holes R-003 and R-010 (approx. 800 m apart)
- Holes R-003, R-010 and T-029 appear to be coincident with both the trend of the soil anomalies and local magnetic lineaments





# TAMAKAY (GUY)

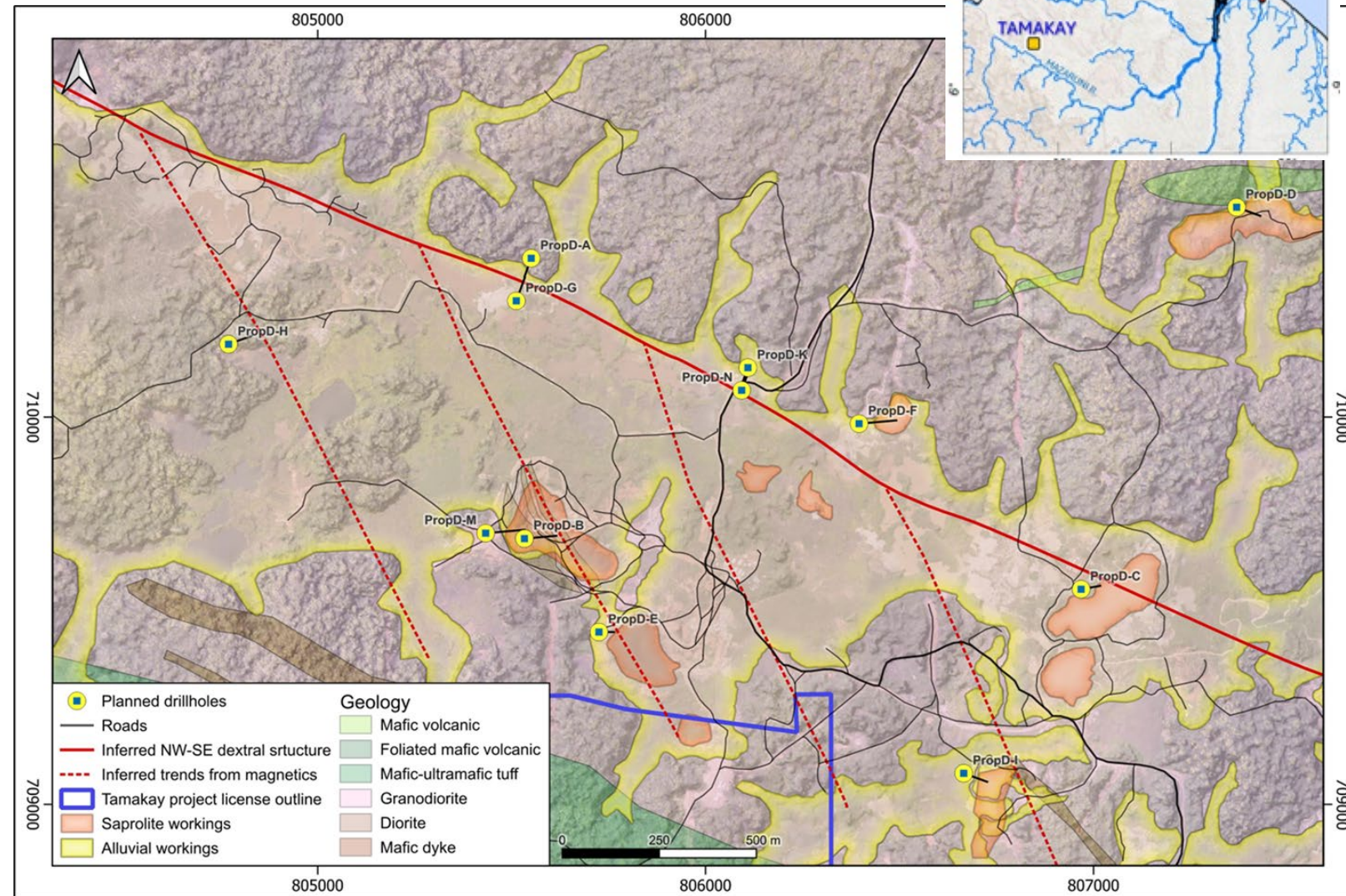
*Drilling underway at site, inset: grab samples with visible gold from recent artisanal mining*





# Phase 1 DD program underway

- Phase 1 - 1,200 m DD program begun Aug '25
- Several areas of known gold bearing quartz veins from previous Artisanal workings and GHRT exploration
- High grade quartz vein samples (grab samples up to **969 g/t Au**).
- Aim is to test several areas of known gold bearing quartz veins
- Test for down dip continuity of gold bearing structures, test for the possible “stacked” veins, zones of mineralization within the granite
- Test a shear zone that underlies several historical small scale mining pits
- Shear zone identified by combination of ground magnetics and induced polarization geophysical surveys







Desiberg quartz vein with gold



Lemon Tree



# IGAB (SUR)

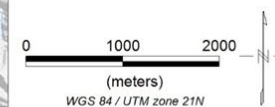
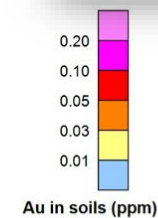
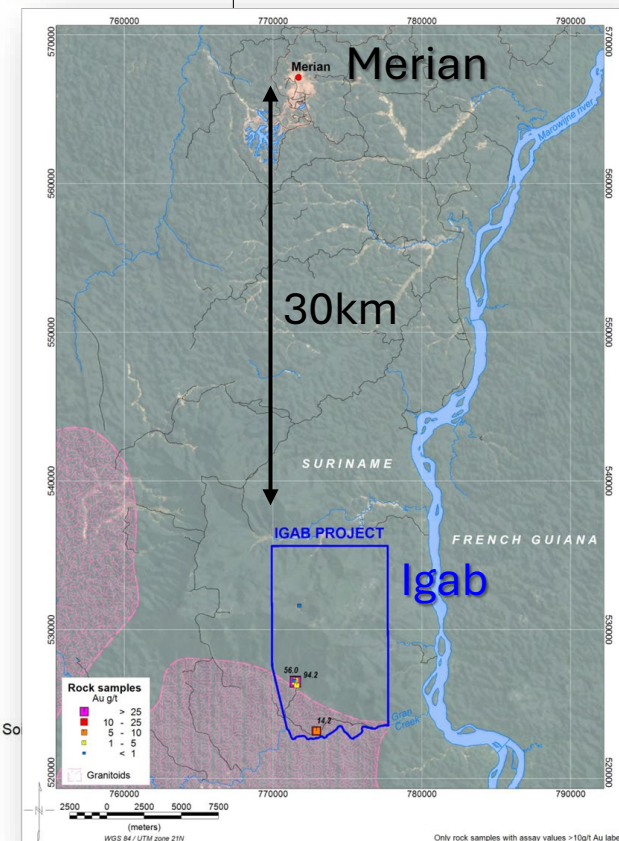
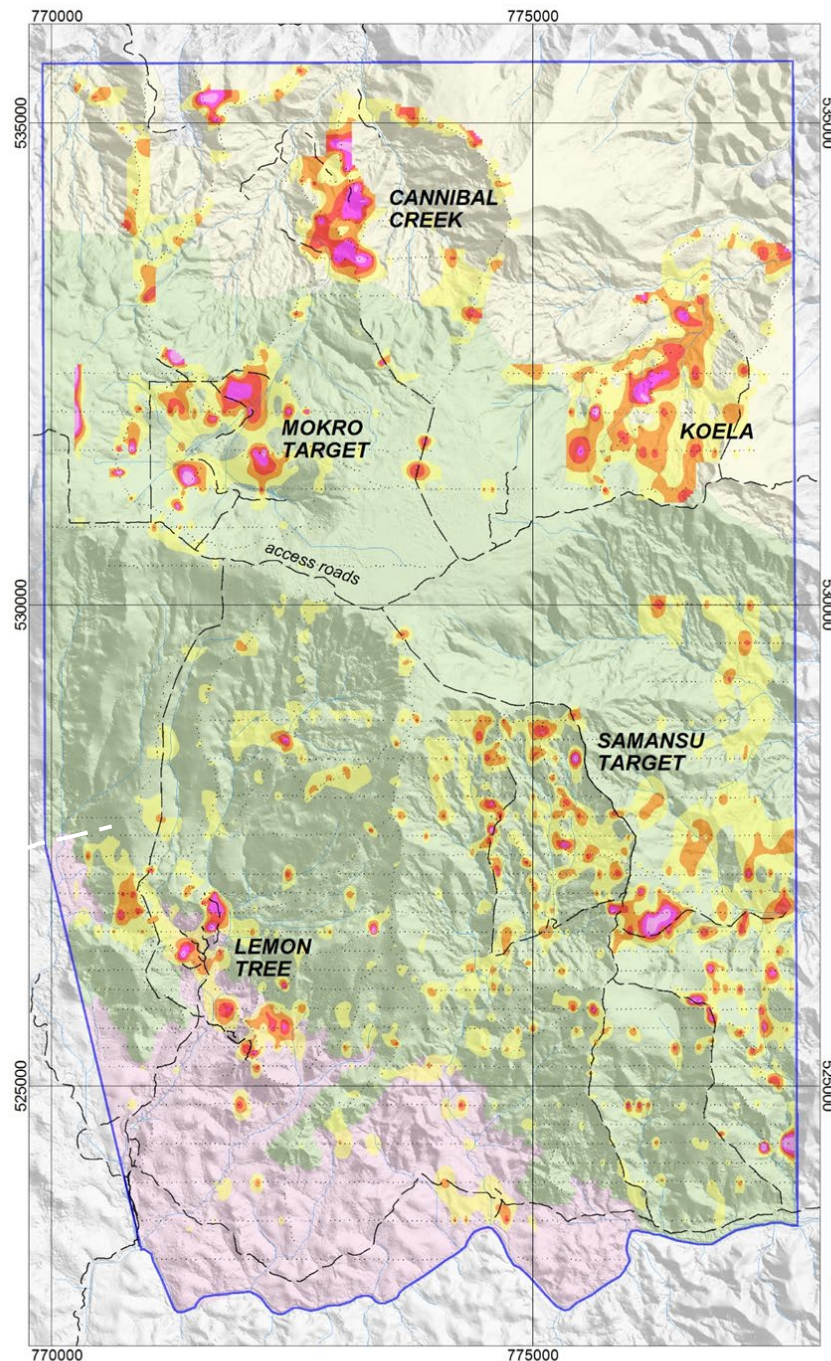
*Foreground: Historically mined Desiberg area,  
Lemon Tree target showing in background*

Desiberg



# Geochem results indicative of multiple targets

- Soils and prospecting have identified 5 target areas at Igab
- At Lemon Tree, a sheared altered outcrop returned 31.0 m @ 1.36 g/t Au in a channel sample
- Lemon Tree lies ~ 500 m south of Desiberg where gold bearing quartz veins were historically mined
- Infill soils are currently underway on 4 Targets to the north and west with strong soil/stream sed signatures to better define the targets for follow up trenching
- Drilling scheduled Q4 2025







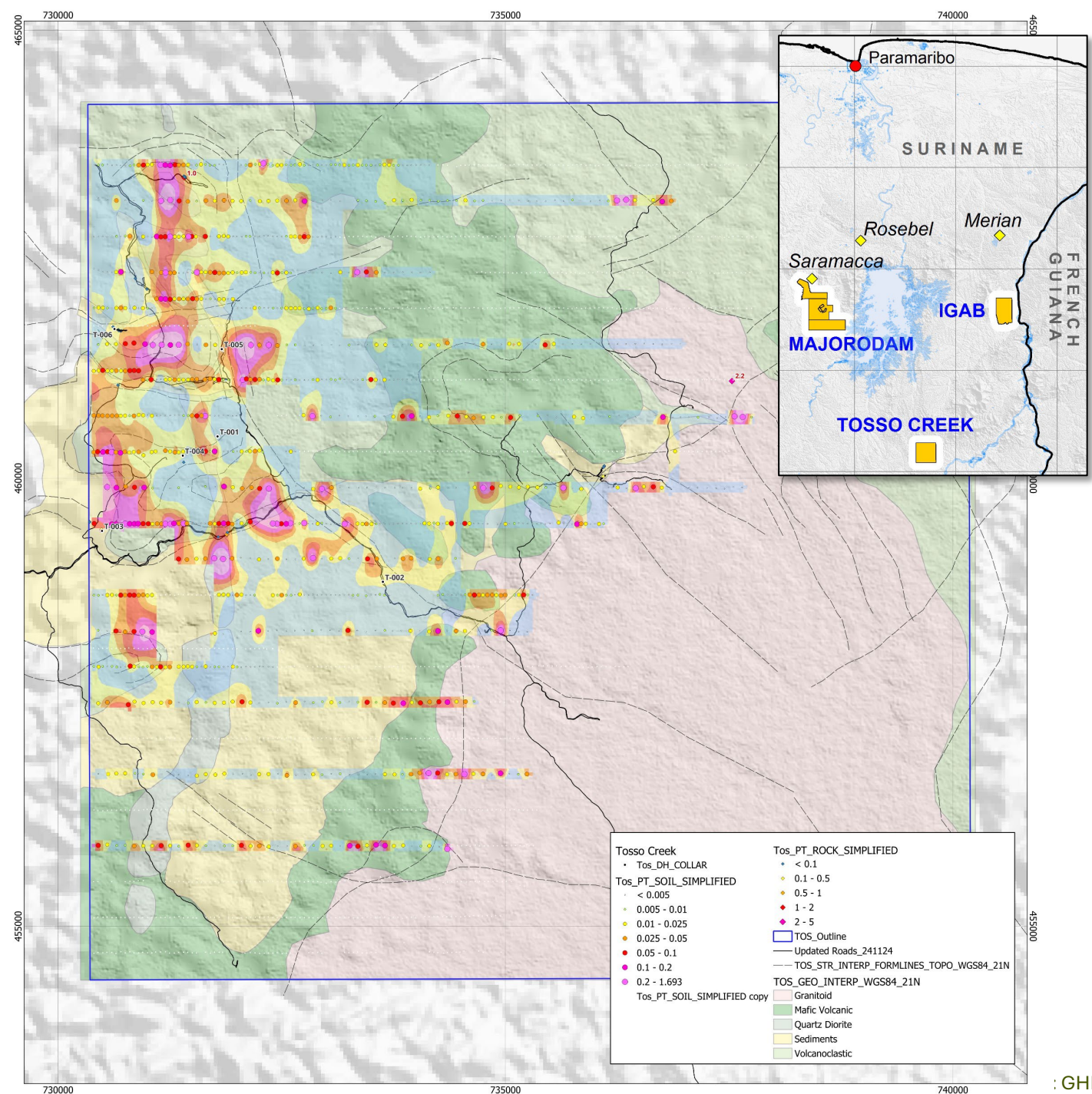
# TOSSO CREEK (SUR)

*GHRT exploration team inspecting Artisanal workings*



# Tosso Creek geology and soil results and exploration plan

- The project sits at the southern end of a highly mineralized sequence of metavolcanics and metasediments known as the Parakama Fm.
- This 100 km long formation hosts numerous artisanal mining operations, including the prolific Sara Kreek gold fields approximately 25 km to the north.
- Active alluvial mining continues at the project both within the volcano-sedimentary rock units and along granitic contact
- Phase 2 soil sampling on 400 by 50 m centers is nearing completion; anomalous areas are being infilled to 200 by 50 m
- Soil results to date include some relatively high-grades with 10 samples running over 500 ppb Au including 4 over 1000 ppb.
- Excavator due in October, for improved access and trench/channel sampling
- Initial drill testing Q1 2026







# Capital Structure

*Sunrise at Igab Camp*



# Strong share structure & supportive shareholders

## Capital Structure

- **Common Shares:** **153,999,702**
- Options (RGD) : @ 0.20 1,765,000
- Options @ 0.61 7,066,667
- **Fully diluted Shares:** **162,831,369**

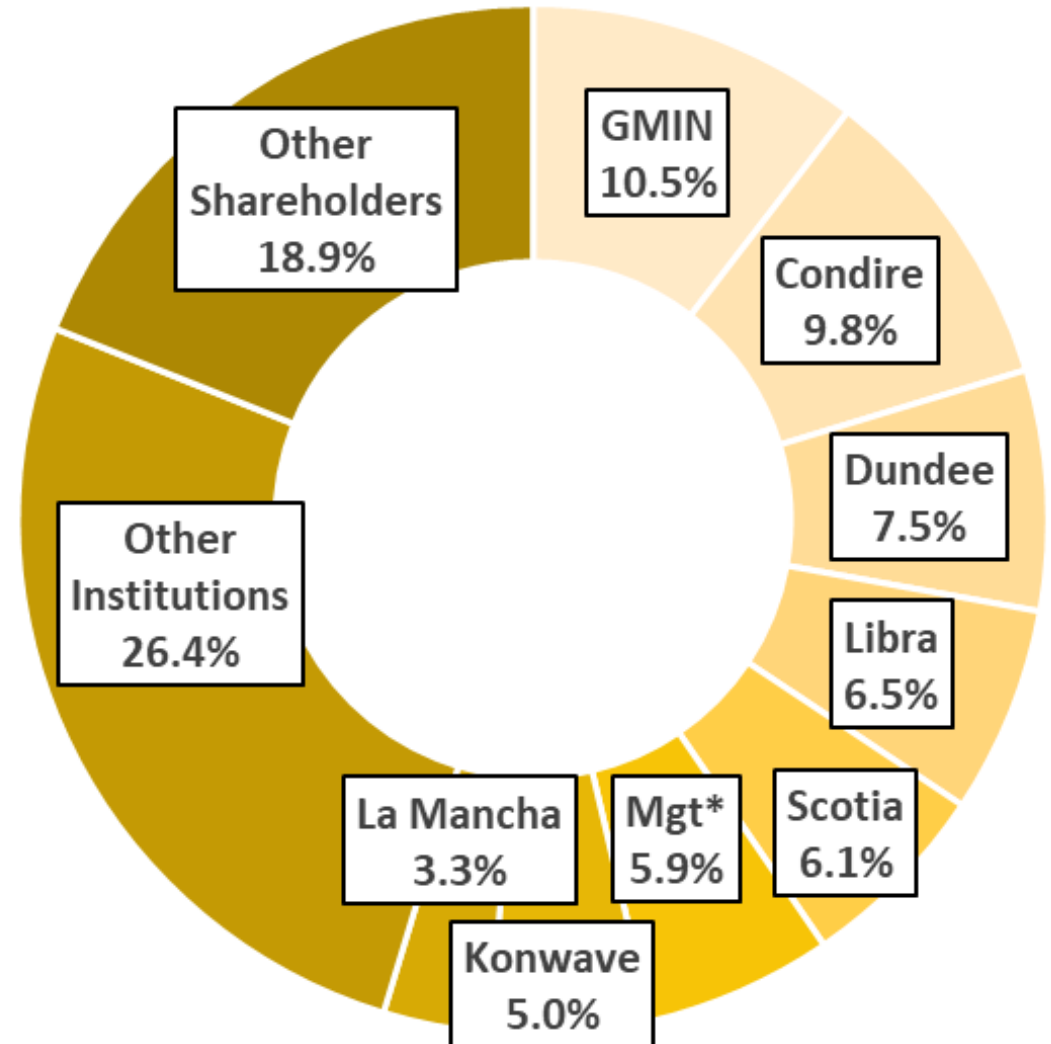
## Strong Supportive Shareholders

- 48.8 % Institutional
- 24.0 % Corporate & Strategic
- 5.9 % Management\*

\* Management includes officers, directors and key advisors

## Cash

- Treasury of \$37 Million







GREENHEART  
GOLD

**Thank you**

TSX.V: GHRT

For further information, please contact:

Doug Flegg CFA, Sr. V.P., Corporate Development

[d.flegg@greenheartgold.com](mailto:d.flegg@greenheartgold.com)

Justin van der Toorn, President & CEO

[www.greenheartgold.com](http://www.greenheartgold.com)

[info@greenheartgold.com](mailto:info@greenheartgold.com)

450-800-2882