

RIVRES•COM

TSX-V RRI OTCQB RVSDF Frankfurt 5YY



RIVERSIDE  
RESOURCES INC

DISCOVERING POTENTIAL, GENERATING VALUE

John-Mark Staude  
CEO, President  
[jmstaude@rivres.com](mailto:jmstaude@rivres.com)

Generating Value, Not Just Projects:  
The Riverside Model Delivering

# Disclaimer

TSX-V RRI OTCQB RVSDF Frankfurt 5YY  
DISCOVERING POTENTIAL, GENERATING VALUE



## Forward-Looking Statements

This document contains forward-looking statements and factual information that are current as of the date the document was originally created. Riverside Resources Inc. ("the Company") disclaims any intention or obligation to update or revise any forward-looking statements, whether as a result of new information, future events or otherwise. Forward-looking statements include, but are not limited to, statements with respect to the timing and amount of estimated future exploration, success of exploration activities, expenditures, permitting, and requirements for additional capital and access to data.

Forward looking statements involve known and unknown risks, uncertainties, and other factors which may cause the actual results, performance or achievements of the Company to be materially different from any future results, performance or achievements expressed or implied by the forward-looking statements. Such factors include, among others, risks related to actual results of current exploration activities; changes in project parameters as plans continue to be refined; the ability to enter into joint ventures or to acquire or dispose of properties; future prices of mineral resources; accidents, labor disputes and other risks of the mining industry; ability to obtain financing; and delays in obtaining governmental approvals of financing

Any statements, opinions, projections, forecasts or other material contained in this presentation do not constitute a commitment, representation or warranty by the company or its directors, officers, agents or employees. The directors, officers, agents and employees of the company shall in no way be liable to any person or body for any loss, claim, demand, damages, costs or expenses of whatsoever nature arising in any way out of, or in connection with, the information contained in this presentation. This presentation does not constitute an offer to sell securities and is not a solicitation of an offer to buy securities. It is not to be distributed to third parties without the consent of the company. An investment in the company is considered to be speculative in nature. Each individual should rely solely upon its own investigations and inquiries with respect to the company and agrees it will not in any way rely upon this presentation. The company recommends that you consult your own professional advisor(s).

## Qualified Person

The Scientific and Technical data contained in this presentation relating Riverside's mineral properties was reviewed by Freeman Smith, P.Geo., a Non-Independent Qualified Person to Riverside Resources, who acts as a "qualified person" under National Instrument 43-101 Standards of Disclosure for Mineral Projects.

# Riverside Value Creation and Upside for Shareholders

TSX-V RRI OTCQB RVSDF Frankfurt 5YY  
DISCOVERING POTENTIAL, GENERATING VALUE



**Core Thesis:** “Riverside is a business that develops mineral exploration portfolios where it monetizes discoveries through spinouts, royalties, and partnerships, all while creating shareholder return and value for communities.”

## **Proven Exploration Portfolio Developer**

Over nearly two decades, we’ve built and advanced a diversified portfolio with top-tier partners and low share dilution

## **Strong Balance Sheet**

Debt-free, with ~C\$4M in cash and no warrants, no recent financings, self funding from business model giving shareholders upside

## **Active Royalties & Spinout Pipeline**

Our monetization track record includes Tajitos, Sugarloaf Peak Arizona Metals, Capitan Silver, and Blue Jay Gold retained royalties

## **Upcoming Catalysts in Mexico**

Union Gold-Silver Project is drilling with partner funding right now with discovery news flow coming as a potential catalyst

## **Ongoing Exploration in British Columbia**

High grade gold and large REE projects progressing with results, catalysts and building the newest portfolio

## **New Deals Unlocking Value**

Continuously working on deals like a “Factory” progressing property deals in Mexico and Canada where Riverside retains NSR royalty interests and moves ahead mineral projects with partner funding and some self funding.

## **Emerging Critical Minerals Exposure**

In BC, our Revel project is expansive and has positive exposure to rare earths discovery and development

## **Tight Share Structure with Insider Alignment**

With only ~75M shares out and significant insider ownership, management’s interests are fully aligned with shareholders



VALUE CREATION

# Share Structure and Key Shareholders

TSX-V RRI OTCQB RVSDF Frankfurt 5YY  
DISCOVERING POTENTIAL, GENERATING VALUE

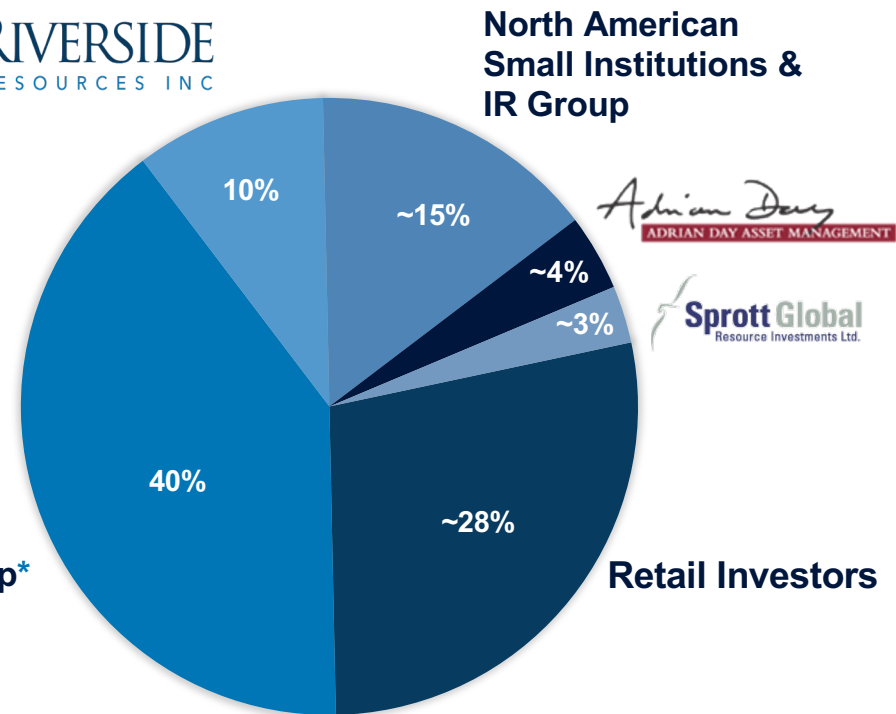


## Major Shareholders Own ~70% Of Outstanding Shares

Issued (since IPO in 2007)	74,783,464
Options	4,560,000
Fully Diluted	79,263,464
Cash	+C\$4,000,000
52 Week Hi-Lo	C\$0.225 – C\$0.12
Market Cap	~C\$13M



**European Investor Group\***



\*European Investor Group consists of high-net-worth investors and small resource funds.

\*These amounts are estimated to the best of our knowledge as of August 31, 2025.

# Combined Value for Shareholders of Riverside and Capitan Share Split – *have done again now with Blue Jay!*

TSX-V RRI OTCQB RVSDF Frankfurt 5YY  
DISCOVERING POTENTIAL, GENERATING VALUE



Trading Range for Riverside Resources

09/02/2025 Riverside Resources Inc (RRI.VN) [TSX Venture] O0.175 H0.175 L0.175 C0.175 Δ+0.010 (+6.06%)

Capitan Begins Trading

Blue Jay Spinout

\$0.60/sh

Red line is combined value of Riverside, Capitan Silver & Blue Jay Gold

\$0.30/sh

~4x current price  
\$0.45/ share dividends

Total Return= value to shareholders including 2 spin outs  
In past 5 years >\$0.60

barchart

Volume (LikeMain) (LikeMain) 89,133

Sept 2020

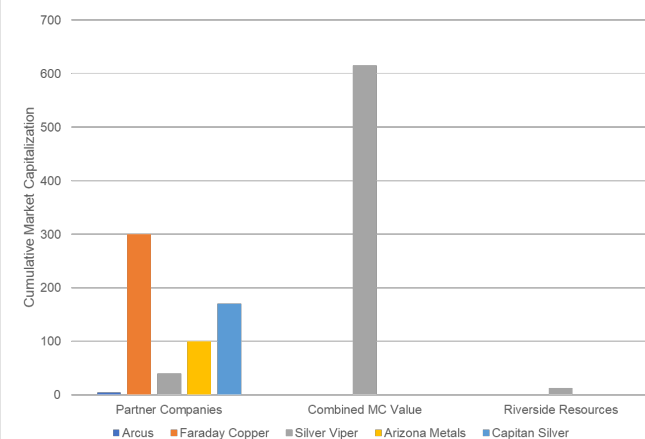
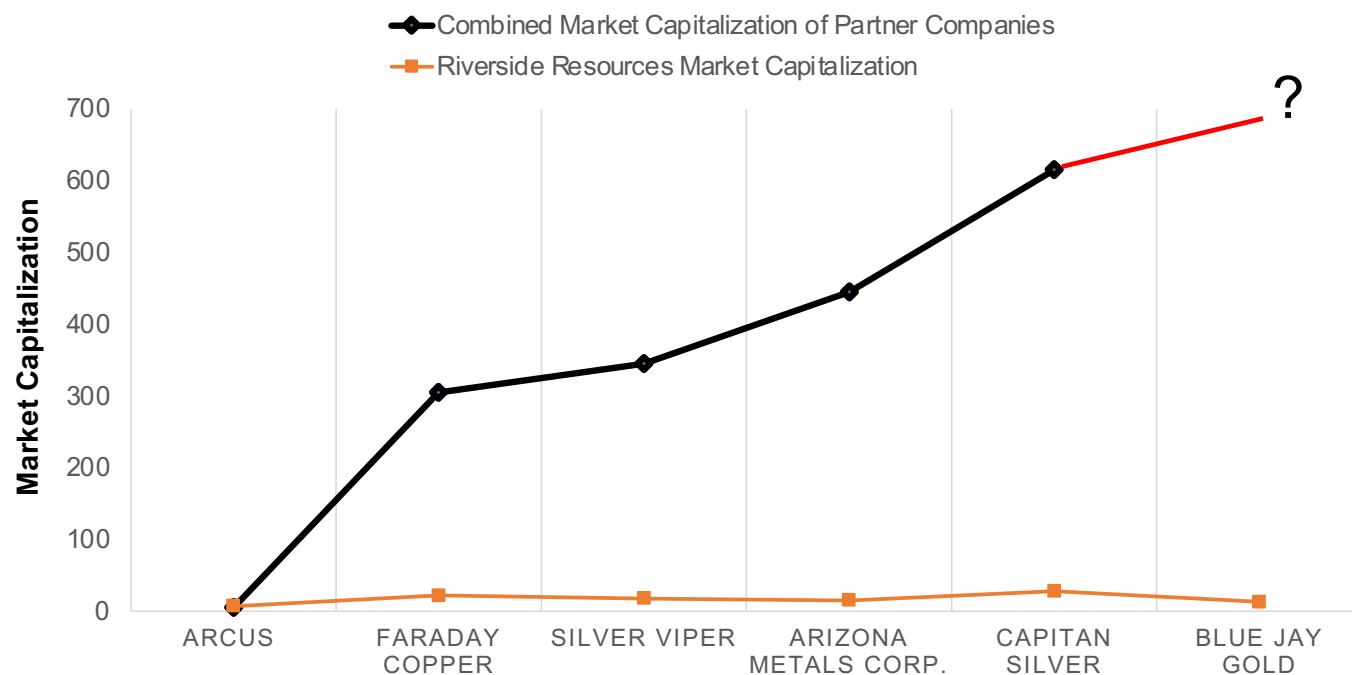
Sept 2025



# Combined Value for Companies out of Riverside

TSX-V RRI OTCQB RVSDF Frankfurt 5YY

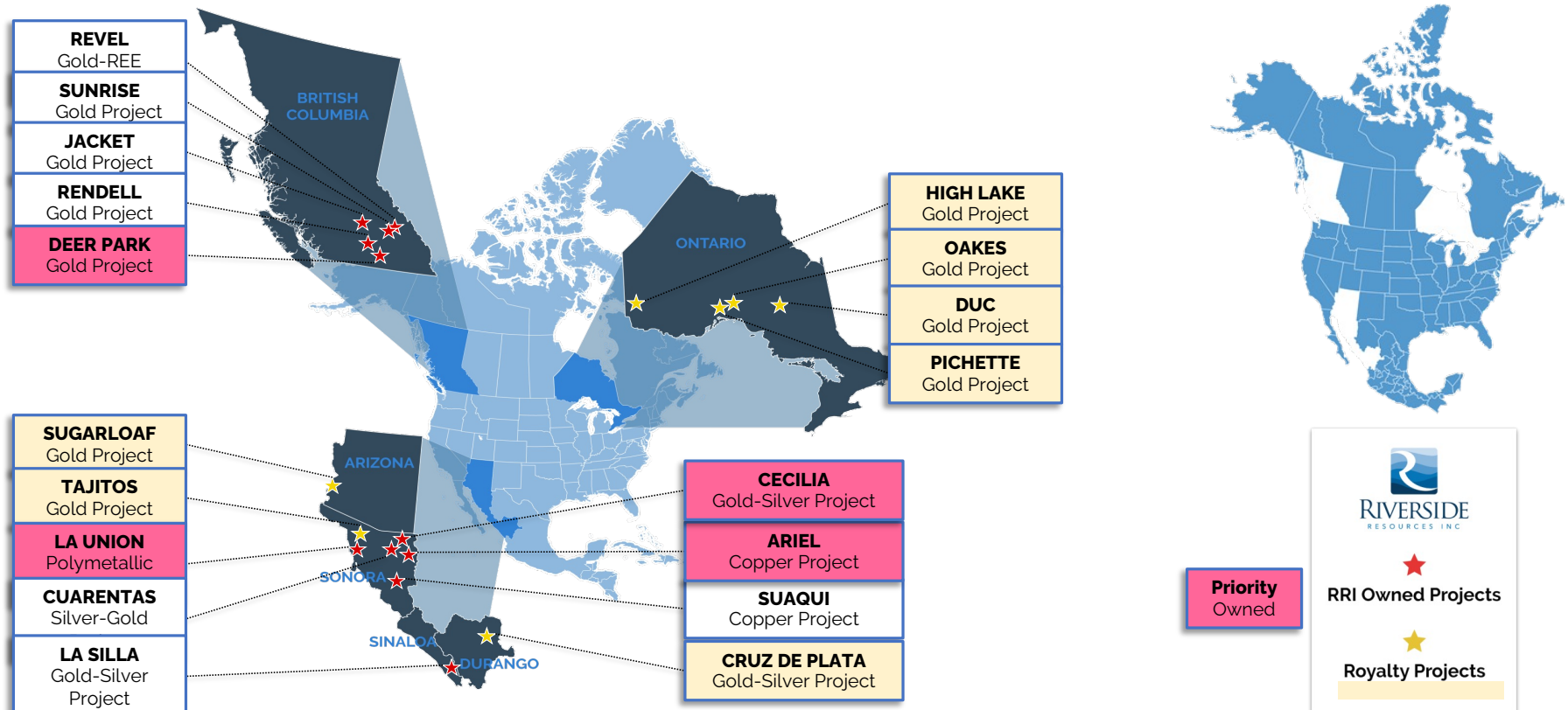
KNOWLEDGE IS GOLDEN



"Since its inception in 2007, Riverside has generated numerous projects. The chart above represents the total market capitalization of a sample of public companies that have started from Riverside projects." – CEO, John-Mark Staude.

# Portfolio and Royalties: Multi-Commodity, Multi-Jurisdictional

TSX-V RRI OTCQB RVSDF Frankfurt 5YY  
DISCOVERING POTENTIAL, GENERATING VALUE



# Experienced Leadership – Management & Board

TSX-V RRI OTCQB RVSDF Frankfurt 5YY  
DISCOVERING POTENTIAL, GENERATING VALUE



## MANAGEMENT

### Dr. John-Mark Staude – President & CEO, Director

- Founder of Riverside Resources (18 years) with 30+ years in mining and exploration.
- Holds a Ph.D. in Economic Geology (University of Arizona) and M.Sc. from Harvard.
- Experience across precious and base metals projects worldwide.
- Director and Chairman of Capitan Silver and Blue Jay Gold (both Riverside spinouts).

### Freeman Smith – VP Exploration

- 25 years in the minerals industry, specializing in exploration property generation and evaluation in the Americas.
- Experience with prospect generators, including work in Mexico with Oro Gold.
- Exploration background across Latin America, Northern Canada, and Ontario–Quebec (Integra).

### Ben Connor – Chief Operations & Data Strategist

- Honors degree in Geographic Science (University of Western Ontario) and advanced diploma in GIS (BCIT).
- Technical experience with BHP Billiton and Golder Associates.
- Leads Riverside's technology integration and data compilation efforts.

### Robert Scott – CFO

- 18 years with Riverside Resources, serving as CFO.
- CFA charterholder with extensive financial management expertise.
- Experience with notable companies including Great Bear and K2.
- Extensive financing, mineral transaction and capital markets expertise.

## DIRECTORS

### James Ladner

- MBA graduate with extensive career in securities trading and capital markets.
- Former EVP of Coutts & Co AG (NatWest Group) from 1974–1992.
- Co-founder/Managing Director of RP&C International and former Nonexecutive Chairman of Bank Austria (Switzerland) Ltd.

### Walter Henry

- President of Frontline Gold Corporation with a BA in Political Science/Economics.
- Extensive experience in finance and mining industries.
- Former roles with CIBC, BNP Paribas, and PwC, managing portfolios and arranging \$1B+ in project financing.

### James Clare

- Corporate commercial and securities lawyer specializing in mining and oil & gas sectors.
- Extensive experience in domestic and cross-border corporate finance and M&A transactions.
- Advises public issuers on corporate and securities law; member of the Canadian Bar Association.

### Bryan Wilson

- CEO of Huntington Exploration Inc. with 35+ years in mining exploration and development.
- Former CEO/President of St. Genevieve Resources and Director of Spider Resources, both acquired in takeovers.
- 12 years in finance as a Financial Advisor, Mining Analyst, and partner in Thames Capital.





## Unlocking Value Riverside Shareholders

### Blue Jay Gold



- Spinout of Riverside's Ontario gold assets (Pichette, Oakes, and Duc projects) into Blue Jay Gold Corp.
- Shareholders received 1 Blue Jay share for every 5 Riverside shares held, with listing expected late 2025.
- Riverside retains a 2% NSR royalty on all three projects, maintaining exposure to future exploration success.

### Capitan Silver



- Spun out from Riverside in 2020, giving shareholders 1 Capitan share for every 4 Riverside shares held
- Now publicly traded (TSXV: CAPT) with a market capitalization of approximately **C\$180 million**<sup>1</sup>
- Riverside retains a 1% NSR royalty on the Cruz de Plata Project, preserving long-term upside.

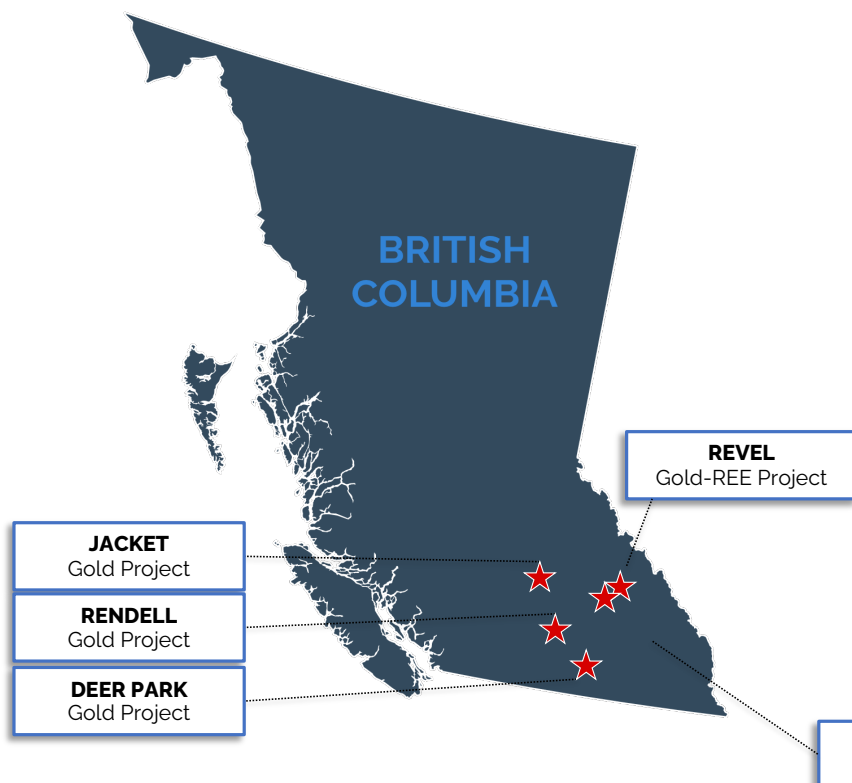
#### What Spinouts Mean for Riverside Shareholders:

- Gain direct ownership in focused exploration companies without additional investment
- Retain long-term upside through royalties held by Riverside on spun-out assets
- Benefit from a proven, repeatable strategy that unlocks hidden value while preserving Riverside's core capital structure

1. As of September 9, 2025

# British Columbia – Gold & Rare Earth Elements

TSX-V RRI OTCQB RVSDF Frankfurt 5YY  
DISCOVERING POTENTIAL, GENERATING VALUE



## Revel Project

- 100% owned project 20 km from the community of Seymour Arm
- Highly prospective carbonatite belt

## Deer Park Project

Spans ~2,000 hectares, situated in the highly prospective Rossland Mining district of southern BC with many high grade gold and base metal showings

- Ongoing exploration program

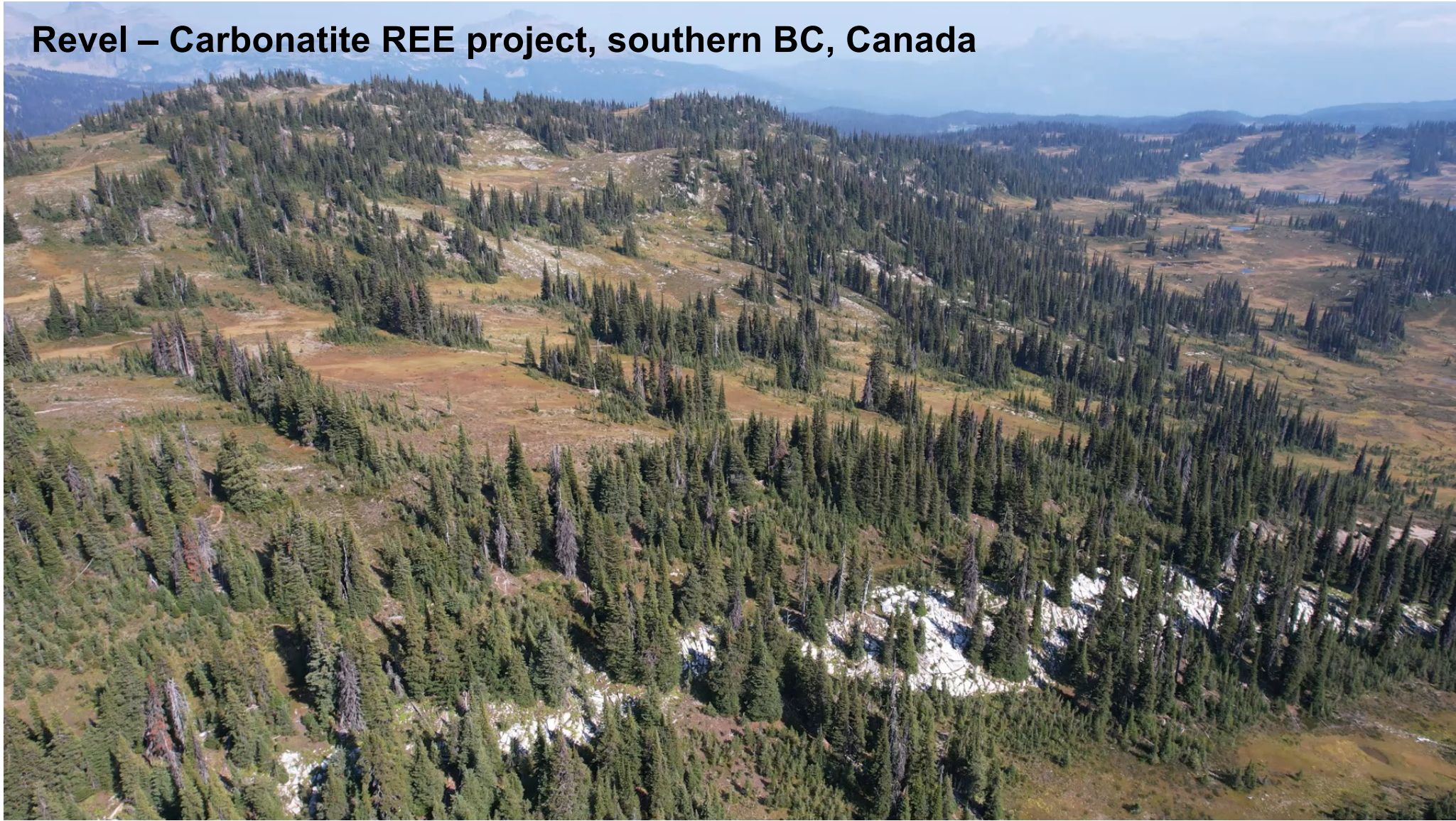
Rare Earth Elements are part of The Canadian Critical Minerals Strategy and are fundamental to the energy transition for modern economies. From solar panels to semiconductors, wind turbines to advanced batteries for storage and transportation, these minerals are essential to the production of these goods.

**SUNRISE**  
Gold Project





## **Revel – Carbonatite REE project, southern BC, Canada**





# British Columbia Gold & Rare Earth Properties

TSX-V RRI OTCQB RVSDF Frankfurt 5YY  
DISCOVERING POTENTIAL, GENERATING VALUE



## Deer Park Project

- Rossland Gold Camp style of mineralization with similar gold polymetallic veins which is one of BC's largest gold historic production camps
- Easily accessible via proximity to Trail BC
- High grade gold occurrences including the Viking Horde and Cougar targets
- Gold occurrences are delineated by airborne EM survey.
- Riverside doing field exploration and progressing target development for discovery



# British Columbia – Gold & Rare Earth Elements

TSX-V RRI OTCQB RVSDF Frankfurt 5YY  
DISCOVERING POTENTIAL, GENERATING VALUE

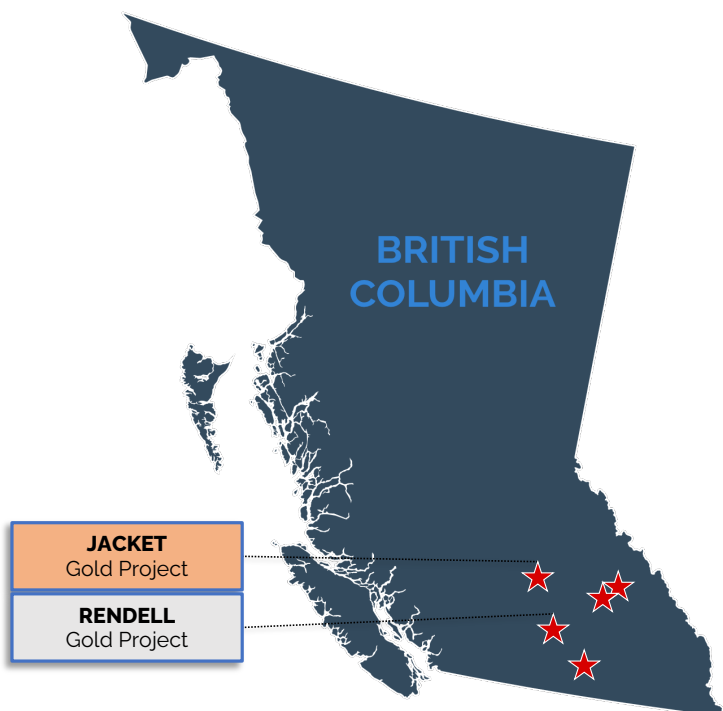


## Jacket Project

- Located in a well-recognized mineral belt adjacent to Yellowhead Copper, Taseko Mines
- Compelling geological setting: High grades and near surface strong targets

## Rendell Project

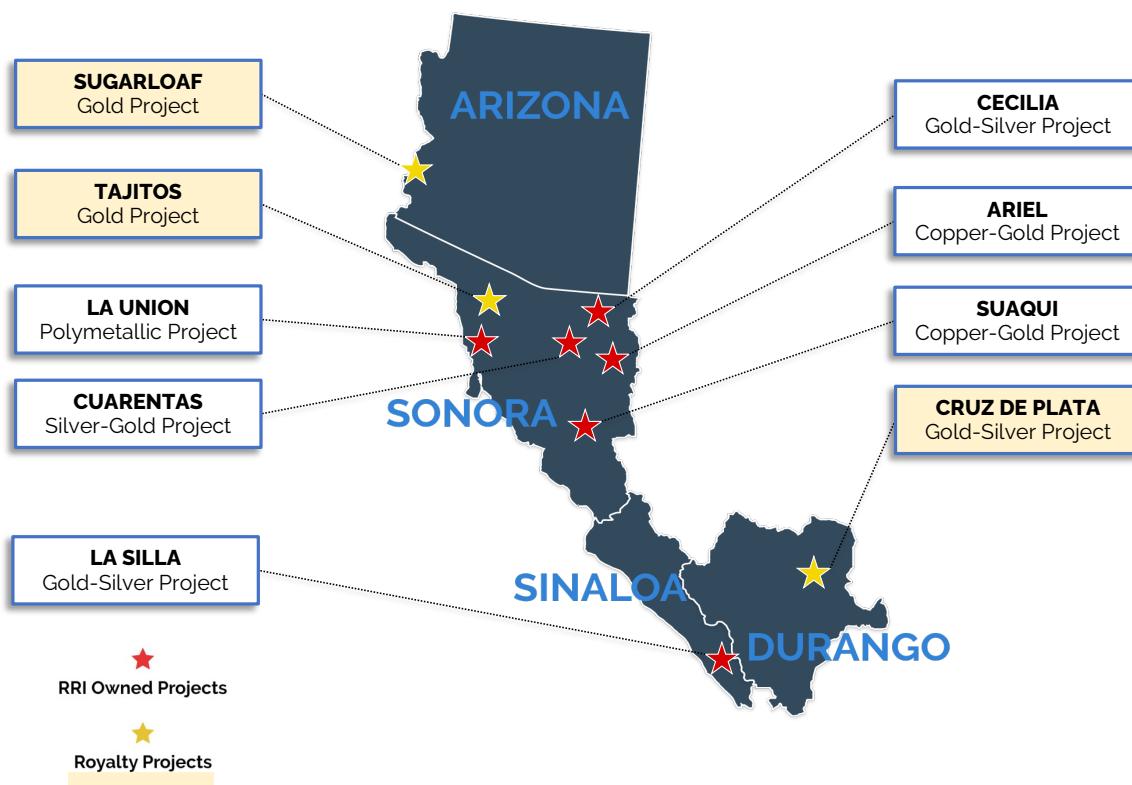
- High-grade silver potential: Historic mining at Waterloo produced exceptionally rich silver (up to 700 oz/ton Ag), Rendell Creek valley strong exploration targets
- 2025 field work targets silver-zinc-lead mineralization in a structurally favorable corridor with multiple showings and historic workings, highlighting potential for new discoveries





# Mexico Exploration With Near Term Catalysts

TSX-V RRI OTCQB RVSDF Frankfurt 5YY  
DISCOVERING POTENTIAL, GENERATING VALUE



## Union Project

Close proximity to major mines, drilling now  
High-grade rock chip samples taken from project;  
highlights include (up to 59.8 g/t) Au, (833 g/t) Ag,  
(5.8%) Pb and (4.2%) Zn

## Cecilia Project

Cecilia Project is titled and 100% owned by  
Riverside.  
District scale gold and silver low sulfidation  
epithermal system

## Ariel Project

Highly prospective porphyry Cu-(Au, Mo) district  
Within sight of Mexico's 2<sup>nd</sup> largest copper mine

# Union Gold Silver Project – Drilling in Mexico

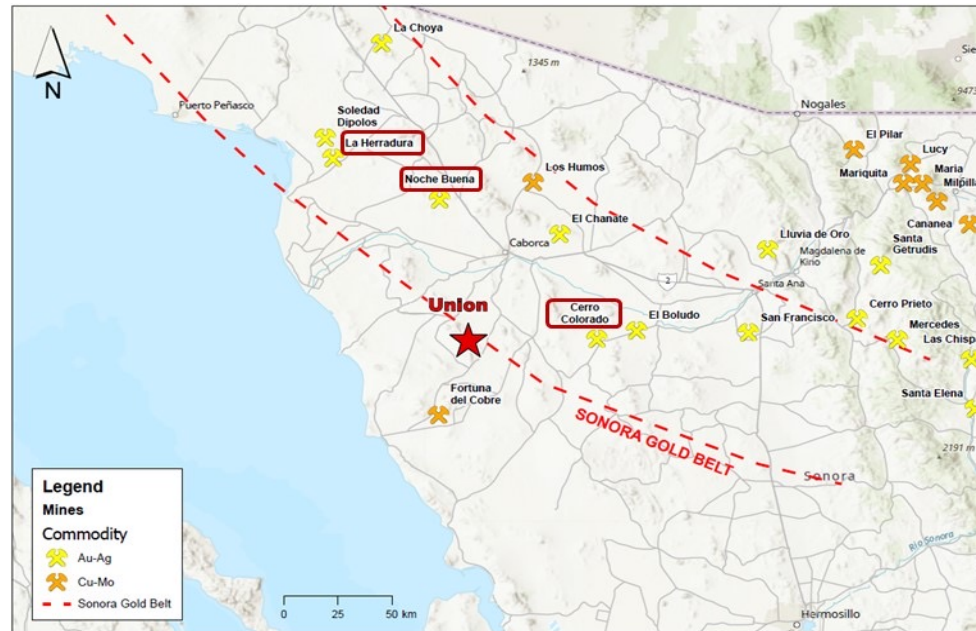
TSX-V RRI OTCQB RVSDF Frankfurt 5YY  
DISCOVERING POTENTIAL, GENERATING VALUE



## Union

- Located in western Sonora 50 km south of Caborca part of the orogenic gold trend
- High-grade rock chip samples include high-grade gold mineralization up to Au (59.8 g/t); Ag (833 g/t); Pb (5.8%); Zn (4.2%).
- Historical production mined high-grade material averaging 7 – 20 g/t Au, 300 g/t Ag, 10 – 20% Pb and 5% Zn
- Recent IP geophysics completed and heading toward drilling

Close proximity to major mines such as:  
La Herradura, Noche Buena and Cerro Colorado







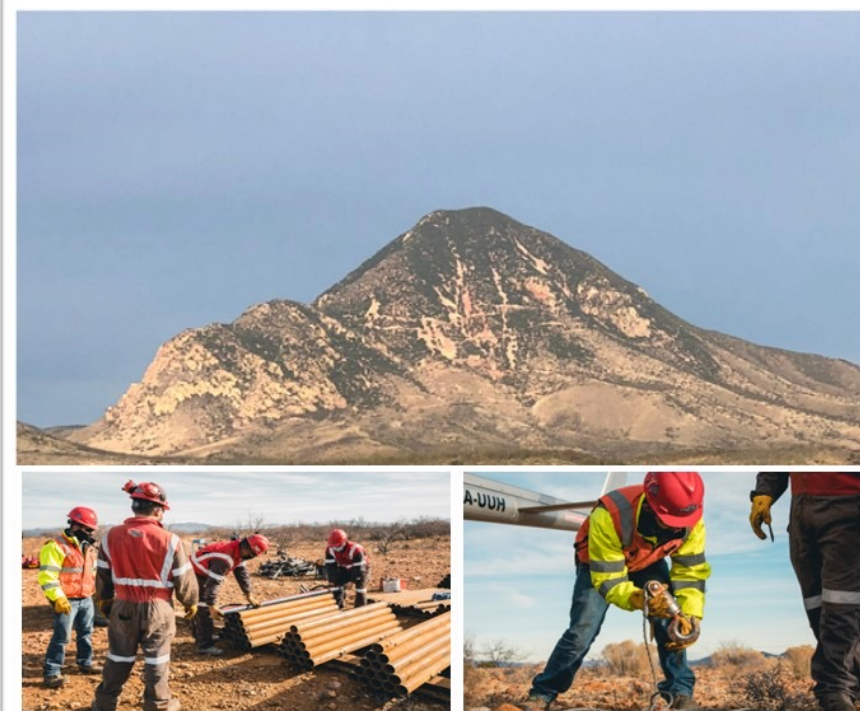
# Cecilia Gold Silver Project in Mexico

TSX-V RRI OTCQB RVSDF Frankfurt 5YY  
DISCOVERING POTENTIAL, GENERATING VALUE



## Riverside Resources has High-Grade and is Progressing in Northern Sonora

- Cecilia Project is titled, drill permitted and 100% owned by Riverside, featuring gold and silver epithermal system
- Located 40 km<sup>2</sup> southwest of Agua Prieta, Mexico, accessible via paved and dirt road
- Spans over 60 km<sup>2</sup> with 10+ exploration targets, including nested dome complexes similar to Yanacocha Mining District in Peru and Korri Kollo Mine in Bolivia
- Drilling found gold and silver with extensions now as next steps





# Built, Not Bought: A Royalty Portfolio Created Through Discovery

TSX-V RRI OTCQB RVSDF Frankfurt 5YY  
DISCOVERING POTENTIAL, GENERATING VALUE



	Project	Partner	Country	NSR	Commodity
1	<u>Sugarloaf Peak</u>	Arizona Metals Corp	USA	2%	Gold, Copper
2	<u>Tajitos</u>	Fresnillo PLC.	Mexico	2%	Gold
3	<u>Cruz de Plata</u>	Capitan Silver Corp	Mexico	1%	Silver, Gold
4	<u>Pichette, Oakes &amp; Duc</u>	Blue Jay Gold	Canada	2%	Gold



Arizona Metals Corp.



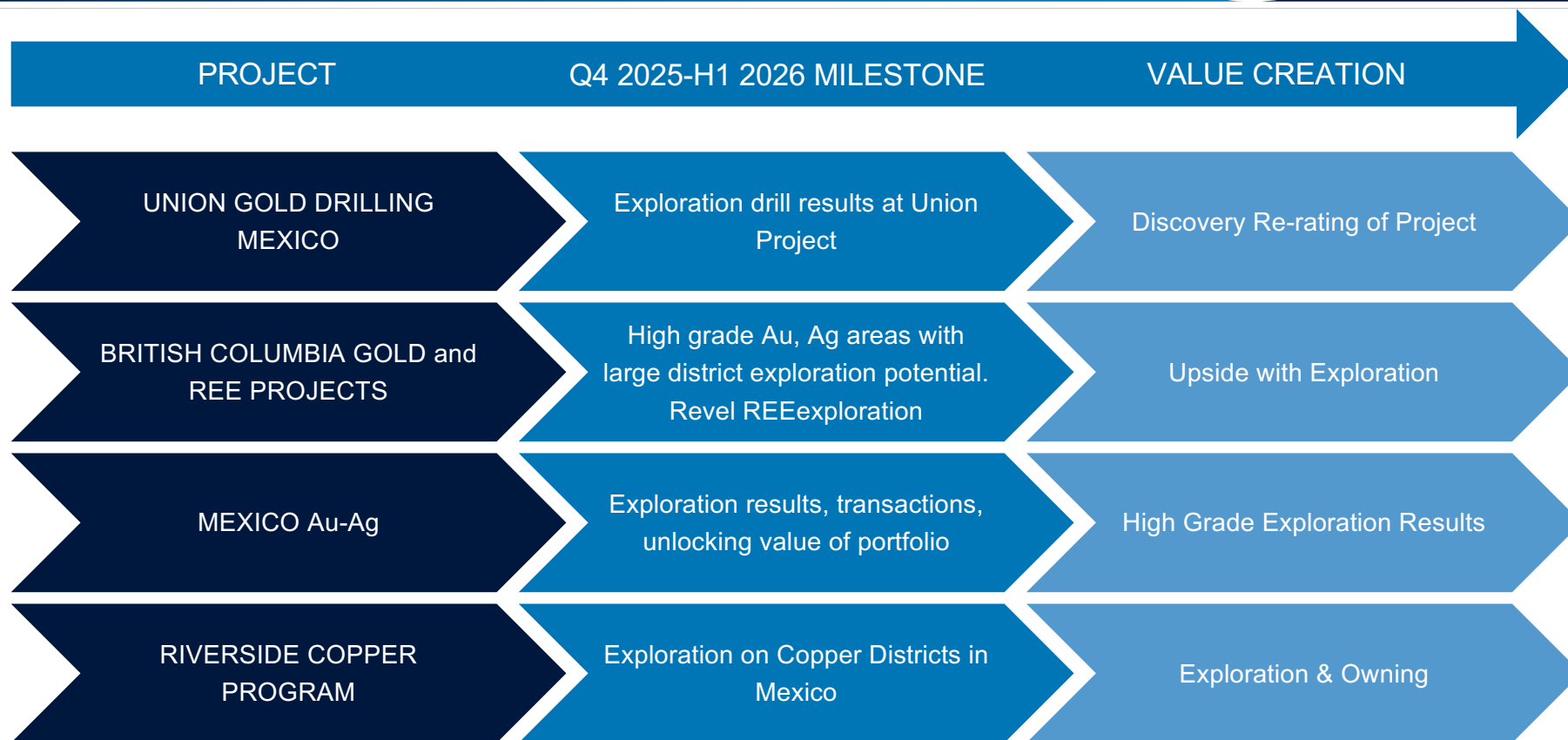
CAPITAN  
SILVER CORP





# Catalysts for Q4 2025 – H1 2026 Portfolio

TSX-V RRI OTCQB RVSDF Frankfurt 5YY  
DISCOVERING POTENTIAL, GENERATING VALUE



# Delivering Shareholder Value: Riverside's Focus for H2 2025

TSX-V RRI OTCQB RVSDF Frankfurt 5YY  
DISCOVERING POTENTIAL, GENERATING VALUE



## Mexico Exploration & Strategic Partnerships

- Ongoing exploration at Union with partner funded drilling to commence soon
- Strategic partnership opportunities
- Track record of successful spin-outs and property transactions (Capitan & Tajitos)

## British Columbia: Critical Minerals & Gold Discovery

- Expanding portfolio of 100%-owned gold & REE assets
- New upcoming results from programs, property development and potential discoveries
- Aligns with Canada's Critical Minerals Strategy and clean energy transition

## Royalty Assets: Long-Term Upside & Cash Flow Potential

- Fresnillo advancing development of Tajitos for heap leach gold mining like their nearby >300K Oz Au production
- Riverside has the 2% NSR on Sugarloaf Peak Gold and other assets in Canada and Mexico
- Transactions with other properties continue to provide potential additional royalties

## Blue Jay Gold: Advancing the Canadian Gold Portfolio



- Shares spun out to shareholders, now adding asset and higher valuation growth
- Independent leader and skilled technical team in place to lead asset-specific strategy, and resource expansion



RIVRES•COM

TSX-V RRI OTCQB RVSDF Frankfurt 5YY



DISCOVERING POTENTIAL, GENERATING VALUE

+1 778.327.6671 [info@rivres.com](mailto:info@rivres.com)

Suite 550 – 800 West Pender Street, Vancouver, BC, Canada V6C 2V6



RIVERSIDE  
RESOURCES INC