



LG

*Nevada's Santa Fe Gold Mine:
On Track to Production*

November 12, 2024 Presentation

TSX.V - LG; OTCQB - LGCXF

Disclaimers

Information Contained In This Presentation

This presentation (the “Presentation”) has been prepared by Lahontan Gold Corp. (the “Company”) solely for informational purposes. None of the Company, its affiliates or any of their respective employees, directors, officers, contractors, advisors, members, successors, representatives or agents makes any representation or warranty as to the accuracy or completeness of any information contained in this Presentation and shall have no liability for any representations (expressed or implied) contained in, or for any omissions from, this Presentation. This Presentation shall not constitute an offer, nor a solicitation of an offer, of the sale or purchase of securities. This Presentation does not constitute an offering of securities of the Company and under no circumstances is it to be construed as a prospectus or advertisement or public offering of securities.

No securities regulatory authority or similar authority has reviewed or in any way passed comment upon the document or the merits of the Company’s securities and any representation to the contrary is an offence. Except where otherwise indicated, the information contained in this Presentation has been prepared by the Company and is given as of the date hereof. The delivery of this Presentation shall not imply that the information herein is correct as of any date after the date hereof.

Market and Industry Data

This Presentation includes market and industry data that has been obtained from third party sources, including industry publications. The Company believes that the industry data is accurate and that the estimates and assumptions are reasonable, but there is no assurance as to the accuracy or completeness of this data. Third party sources generally state that the information contained therein has been obtained from sources believed to be reliable, but there is no assurance as to the accuracy or completeness of included information. Although the data is believed to be reliable, the Company has not independently verified any of the data from third party sources referred to in this Presentation or ascertained the underlying economic assumptions relied upon by such sources. References in this Presentation to reports and publications should not be construed as depicting the complete findings of the entire referenced report or publication. The Company does not make any representation as to the accuracy of such information.

Cautionary Note Regarding Forward-looking Information

This Presentation contains “forward-looking information” within the meaning of applicable Canadian securities laws. Forward-looking information includes, but is not limited to, information with respect to the Company’s strategy, plans or future financial or operating performance, and advancements at the Company’s properties; Any expectations with respect to defining mineral resources or mineral reserves on any of the project’s any expectation with respect to any permitting, development or other work that may be required to bring any of the projects into production; any expectation that any of the projects can be brought back into production rapidly or expeditiously; any expectations as to future exploration potential for any of the projects; any expectation as to the outcome or success of any proposed programs for any of the projects; any expectation that market conditions will warrant future production from any of the projects; statements with respect to the transaction (the “Transaction”) with Energy Fuels Inc. (“Energy Fuels”), the timing of closing of the Transaction and the impact on the Company’s operations; any expectation that any future production payments will become due and payable and be paid. Generally, but not always, forward looking information and statements can be identified by the use of words such as “plans”, “expects”, “is expected”, “budget”, “scheduled”, “estimates”, “forecasts”, “intends”, “anticipates”, or “believes” or the negative connotation thereof or variations of such words and phrases or statement that certain actions, events or results “may”, “could”, “would”, “might” or “will be taken”, “occur” or “be achieved” or the negative connotation thereof.

Forward-looking information is based on the Company’s current expectations, beliefs, assumptions, estimates and forecasts about the Company’s business and the industry and markets in which it operates. Such forward information and statements are based on numerous assumptions, including among others, the availability of financing, the accuracy of previous exploration records and results, that the results of planned exploration activities are as anticipated, the cost of planned exploration activities, that third party contractors, equipment and supplies and governmental and other approvals required to conduct the Company’s planned exploration and development activities will be available on reasonable terms and in a timely manner and that general business and economic conditions will not change in a material adverse manner. Although the assumptions made by the Company in providing forward looking information or making forward-looking statements are considered reasonable by management at the time, there can be no assurance that such assumptions will prove to be accurate.

Forward-looking information and statements also involve known and unknown risks and uncertainties and other factors, which may cause actual results, performances and achievements of the Company to differ materially from any projections of results, performances and achievements of the Company expressed or implied by such forward-looking information or statements. These factors include receipt of certain regulatory approvals in connection with the completion of the Transaction; the satisfaction of closing conditions; potential conflicts of interest between the Company and Energy Fuels; the costs associated with bringing any of the projects back into production; risks that historical mineral estimates can be updated and be verified to be current mineral resources or Mineral Reserves; permitting and regulatory delays; litigation risks; competition from others; market factors, including future demand for and prices realized from the sale of uranium and vanadium; government actions that could restrict or eliminate the ability to mine on public lands, such as through the creation or expansion of national monuments or through mineral withdrawals; the policies and actions of foreign governments, which could impact the competitive supply of and global markets for uranium and vanadium; the Company’s expectations in connection with the production and exploration, development and expansion plans at the projects discussed herein being met; changes in national and local government legislation, taxation, controls or regulations and/or changes in the administration or laws, policies and practices; the impact of general business and economic conditions; fluctuating metal prices; currency exchange rates; the impact of inflation; general risks of the mining industry; failure of plant, equipment or processes to operate as anticipated; unanticipated results of future studies; seasonality and unanticipated weather changes; success of exploration activities, permitting timelines, government regulation; environmental risks; unanticipated reclamation expenses; and/or title disputes or claims.

Although the Company has attempted to identify important factors that could cause actual actions, events or results to differ materially from those contained in the forward-looking information or implied by forward-looking information, there may be other factors that cause results not to be as anticipated, estimated or intended. There can be no assurance that forward-looking information and statements will prove to be accurate, as actual results and future events could differ materially from those anticipated, estimated or intended. Accordingly, readers should not place undue reliance on forward-looking statements or information. The Company undertakes no obligation to update or reissue forward-looking information as a result of new information or events except as required by applicable securities laws.

The footnotes, endnotes and appendices to this Presentation contain important information.

The Technical information in this presentation has been reviewed by Tony Cesualdo M.Sc., who is a Qualified Person as the term is defined in NI 43-101.



TSX:V-LG; OTCQB:LGZTF

LAHONTAN GOLD SHARE STRUCTURE



Key Shareholders:

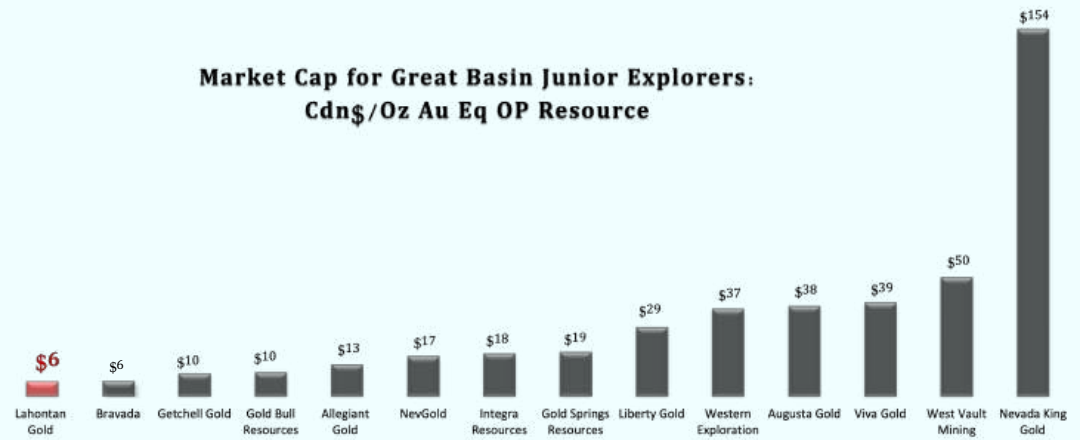
- KA Gold
- ASA
- APAC
- Palos
- Extract Capital
- Goodman

PROFORMA CAPITALIZATION TABLE

Shares Outstanding	(Shares)	206.2 M
Market Capitalization	(C\$M)	Basic: \$12.4 M FD: \$18.0M
Warrants	14.0M @ 18 cents 26.4M @ 12 cents 32.4M @ 10 cents	72.7M total
Options		20.6M @ 19 cents
Cash	(C\$M)	\$1.3 M
Debt	(C\$M)	\$0



Market Cap for Great Basin Junior Explorers: Cdn\$/Oz Au Eq OP Resource



LG TSX.V - LG; OTCQB - LGCXF

Average \$32 in market capitalization per resource ounce*

*Source: Stockwatch, October 15, 2024; Company disclosure



MANAGEMENT & BOARD



**KIMBERLY ANN, FOUNDER,
EXECUTIVE CHAIR, CEO, PRESIDENT**



**BRIAN MAHER, FOUNDER,
VICE PRESIDENT - EXPLORATION**



**JOHN MCNEICE,
CHIEF FINANCIAL OFFICER**



**CHRIS DONALDSON,
INDEPENDENT DIRECTOR**



**JOSH SERFASS,
INDEPENDENT DIRECTOR**



**BOB MC KNIGHT,
INDEPENDENT DIRECTOR**

LARGE-SCALE GOLD OXIDE DEPOSITS WALKER LANE, NEVADA USA

GOLD & SILVER ASSETS IN THE WALKER LANE



PAST PRODUCER

- HEAP LEACH GOLD & SILVER OPERATION
- 1.95 M OUNCES MRE
- OXIDE OXIDE OXIDE



SATELLITE ASSET

- OXIDE STARTS AT THE SURFACE
- ONLY 13 Km AWAY FROM OUR FLAGSHIP



GOLD & SILVER

- MULTIPLE VEIN SYSTEM
- HISTORIC GRADES 25 G/T GOLD & 300 G/T SILVER



GOLD & SILVER

- HISTORIC RESOURCE OF 220,000 OUNCES AU EQ
- LOCATED NEXT DOOR TO CANDELIERA SILVER MINE

WALKERLANE, NEVADA EXTREMELY ACTIVE DISTRICT



NEVADA

- # 1 Jurisdiction in the USA
- Straight Forward Permitting



SIZE & SCALE

- 1.95 Million ounces & growing
- District scale land package
- Multi-million ounce district



EXCELLENT INFRASTRUCTURE

- Year-round access, substation on site, access to three water wells
- Adjacent to an operating mine



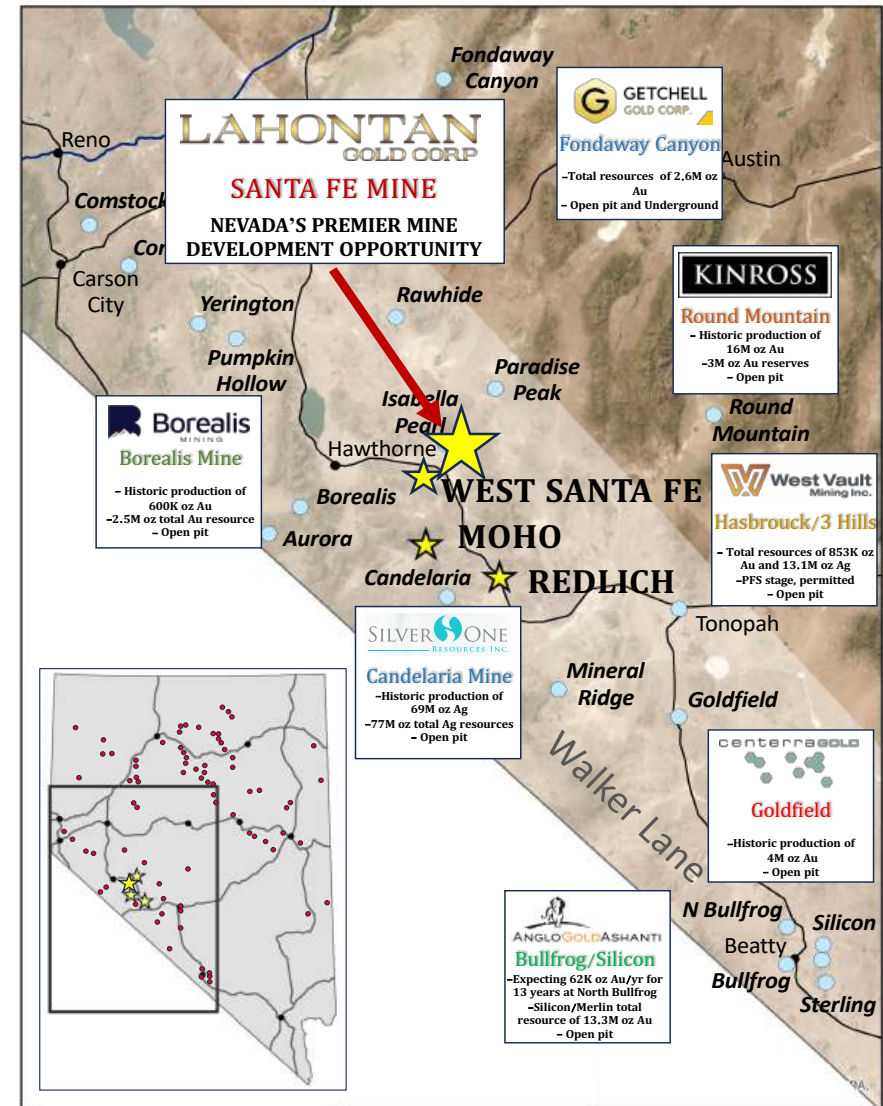
PAST PRODUCER

- Santa Fe Mine was mined from 1988-1994 by Corona Gold
- LG on track to Production 2026

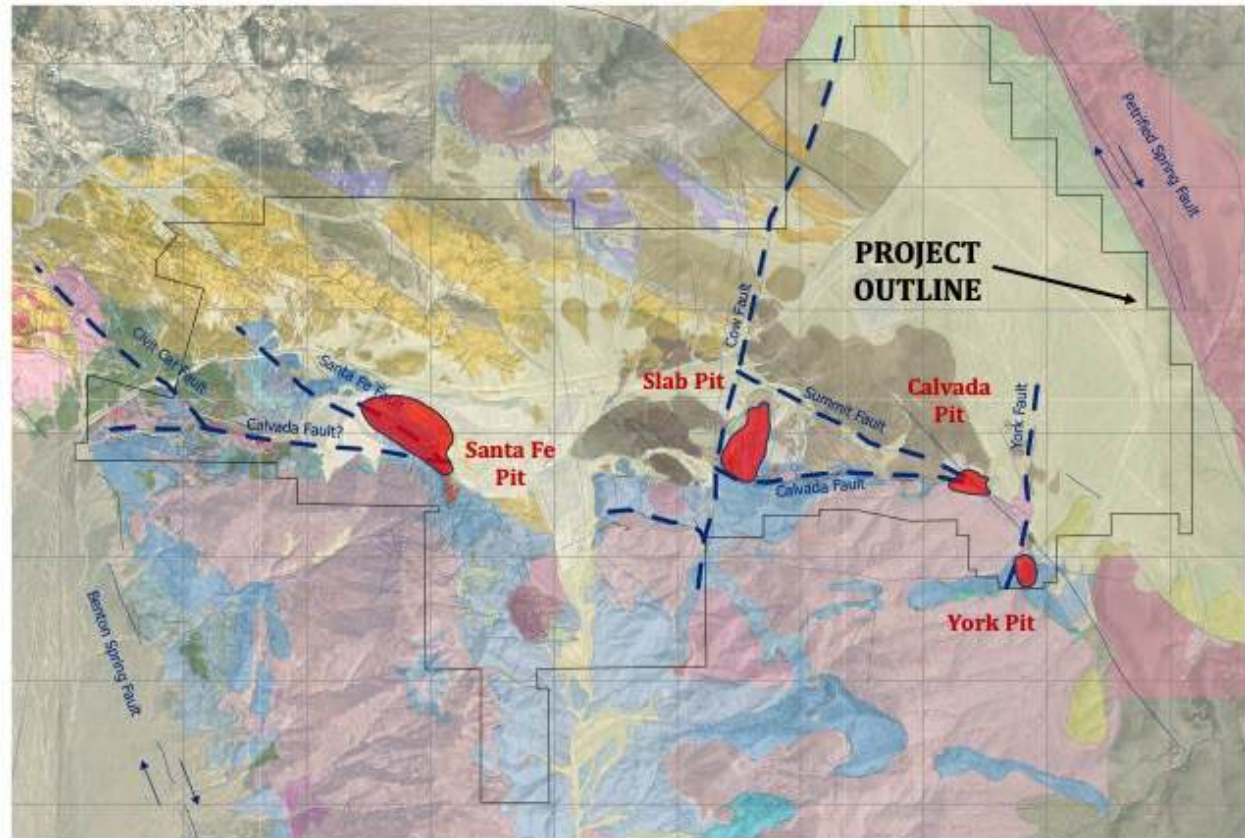


MANAGEMENT & BOARD- PROVEN TRACK RECORD

- Strong support, by Management ownership 10% & High Net worth Investors



SANTA FE MINE UNIQUE GEOLOGIC SETTING



MULTIPLE TARGETS YET TO BE TESTED

LG TSX.V-LG; OTCQB-LGCXF

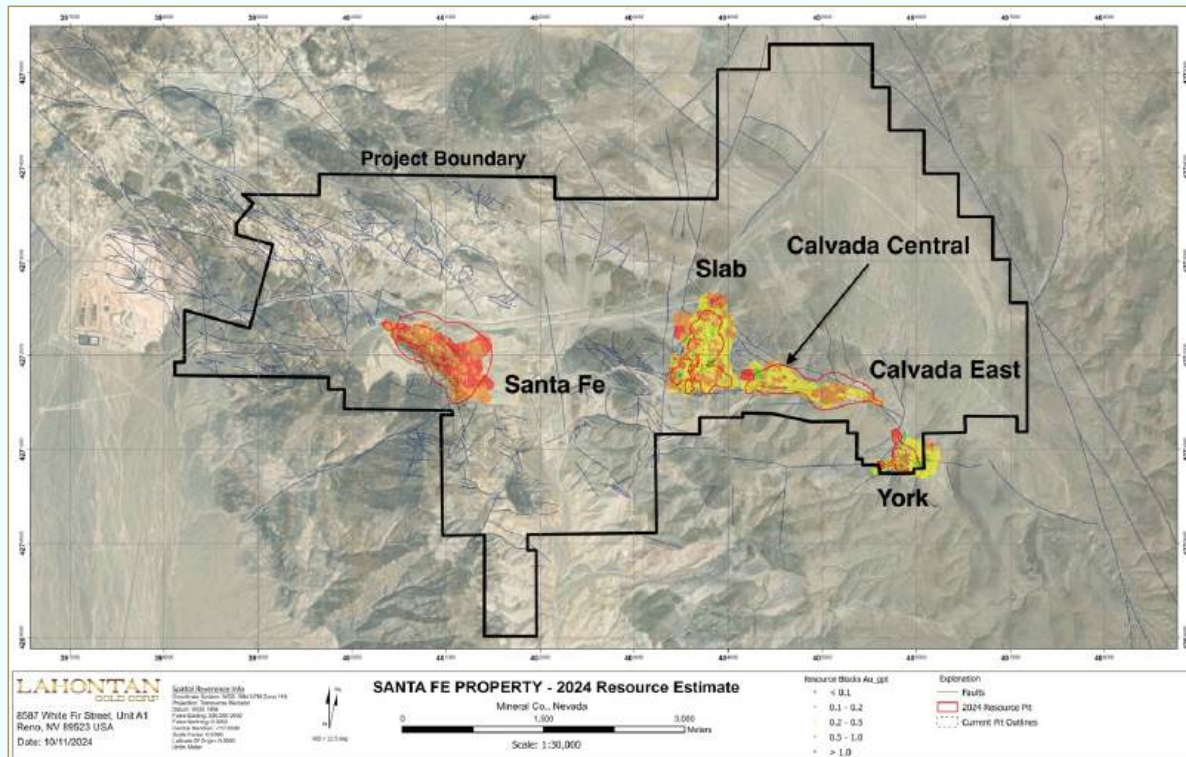
WHAT TO KNOW

SANTA FE MINE

- ① **TRIASSIC CALCAREOUS HOST ROCKS**
 - All five deposits hosted by same rock types (blue)
- ② **KEY STRUCTURAL DOMAINS**
 - NW, northerly and easterly faults
 - All favorable for Au & Ag mineralization
- ③ **OPEN, OPEN, OPEN**
 - Open between deposits, along strike, and at depth



UPDATED 20% INCREASE IN RESOURCE ESTIMATE 2024 1.54 MILLION OUNCES INDICATED AND 0.41 MILLION OUNCES INFERRED PIT CONSTRAINED RESOURCE*



1. **AVERAGE GRADE 0.93 g/t Au Eq**
2. **INDICATED AND INFERRED RESOURCES**
 - Occur in five separate deposits
 - Resource constrained by conceptual pits
3. **OXIDE DOMAIN RESOURCES**
 - Indicated Au Eq oxide ounces: 640k oz grading 0.68 g/t Au Eq*
 - Inferred Au Eq oxide ounces: 219k ounces grading 0.53 g/t Au Eq*
4. **HISTORIC PRODUCTION BREAKDOWN**
 - 356,000 ounces Au
 - 784,000 ounces of Ag with 1.1 g/t Au Eq average grade (Nevada Division of Minerals, www.ndomdata.com)

SANTA FE LAND GOLD & SILVER RESOURCES

*Please see Appendix One for detailed Mineral Resource Estimate.

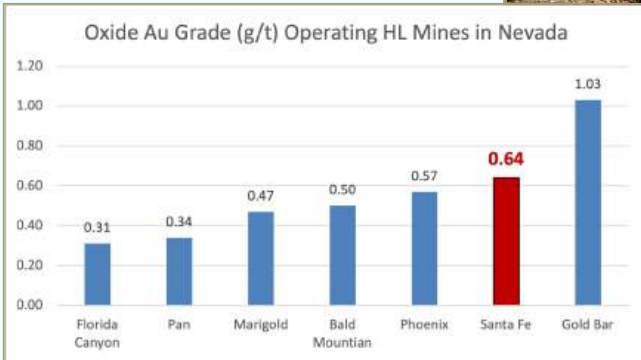


SANTA FE DEPOSIT

SIGNIFICANT OXIDE REMAINING IN HIGH-WALL

WHAT TO KNOW SANTA FE DEPOSIT

- 1. SANTA FE PIT OXIDE, OXIDE**
 - Significant oxide left in the to be mined
 - 0.70 g/t Oxide Gold with low strip*
- 2. COMPETENT WALL ROCK**
 - 50 Degree Pit Slopes
 - Mineralization crops out in the pit bottom and high-wall
- 3. OVERALL OXIDE GRADE AMONG HIGHEST IN NEVADA***

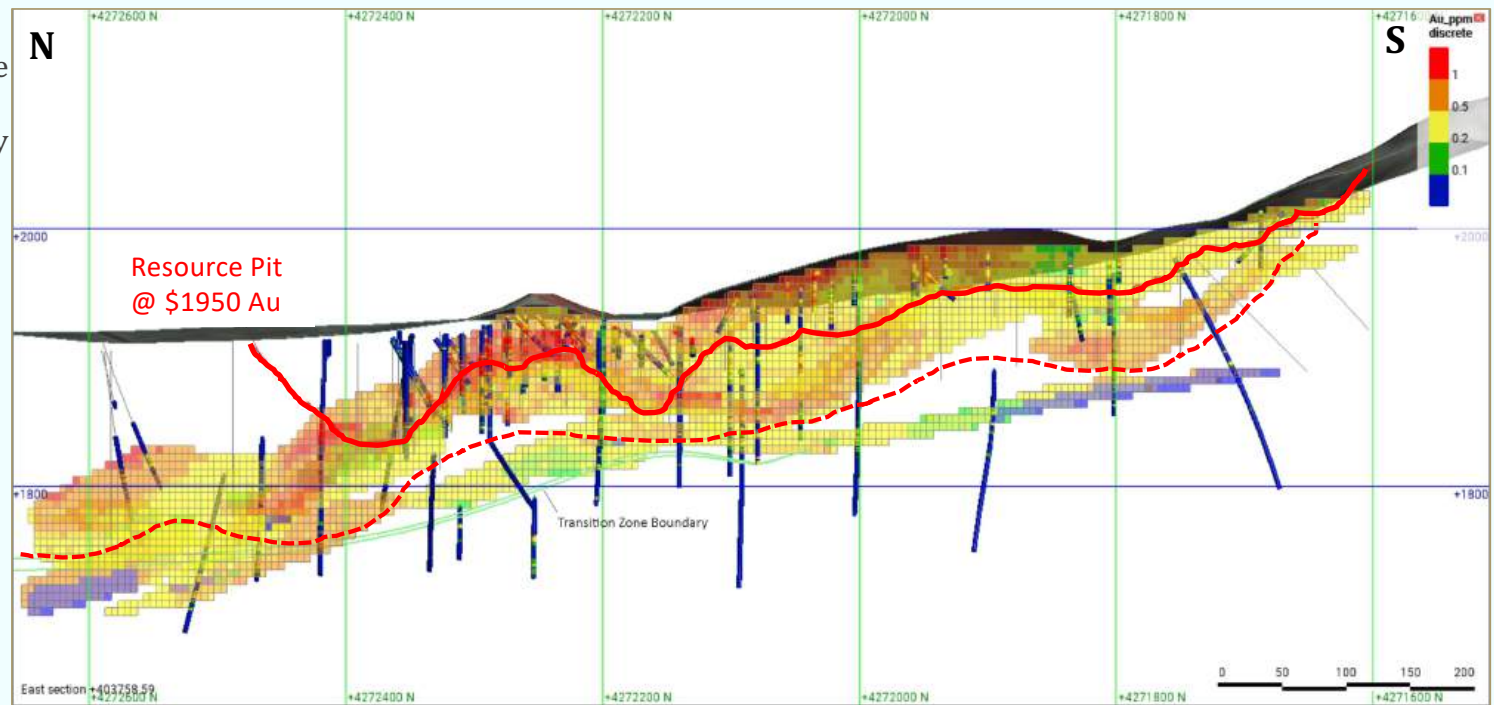


2024 Drilling Dramatically Expands Slab-Calvada

KEY HIGHLIGHTS

ALL OXIDE!!!

- 1 Successful Lahontan drilling resulted in nearly doubling the Oxide resources at Slab-Calvada and account for nearly
- 2 **Indicated Oxide Resources total 204,000 oz Au Eq 9.72 Mt grading (0.65 g/t) and 198,000 oz Au Eq (0.53 g/t) Inferred Oxide Resources***
- 3 Resource is open to the North and unconstrained by drilling
- 4 In-fill drilling below and adjacent to pit shell can further expand the oxide resource



*Please see Appendix One for detailed Mineral Resource Estimate.



100% Controlled
SANTA FE MINE
Five Known Deposits

SUBSTATION



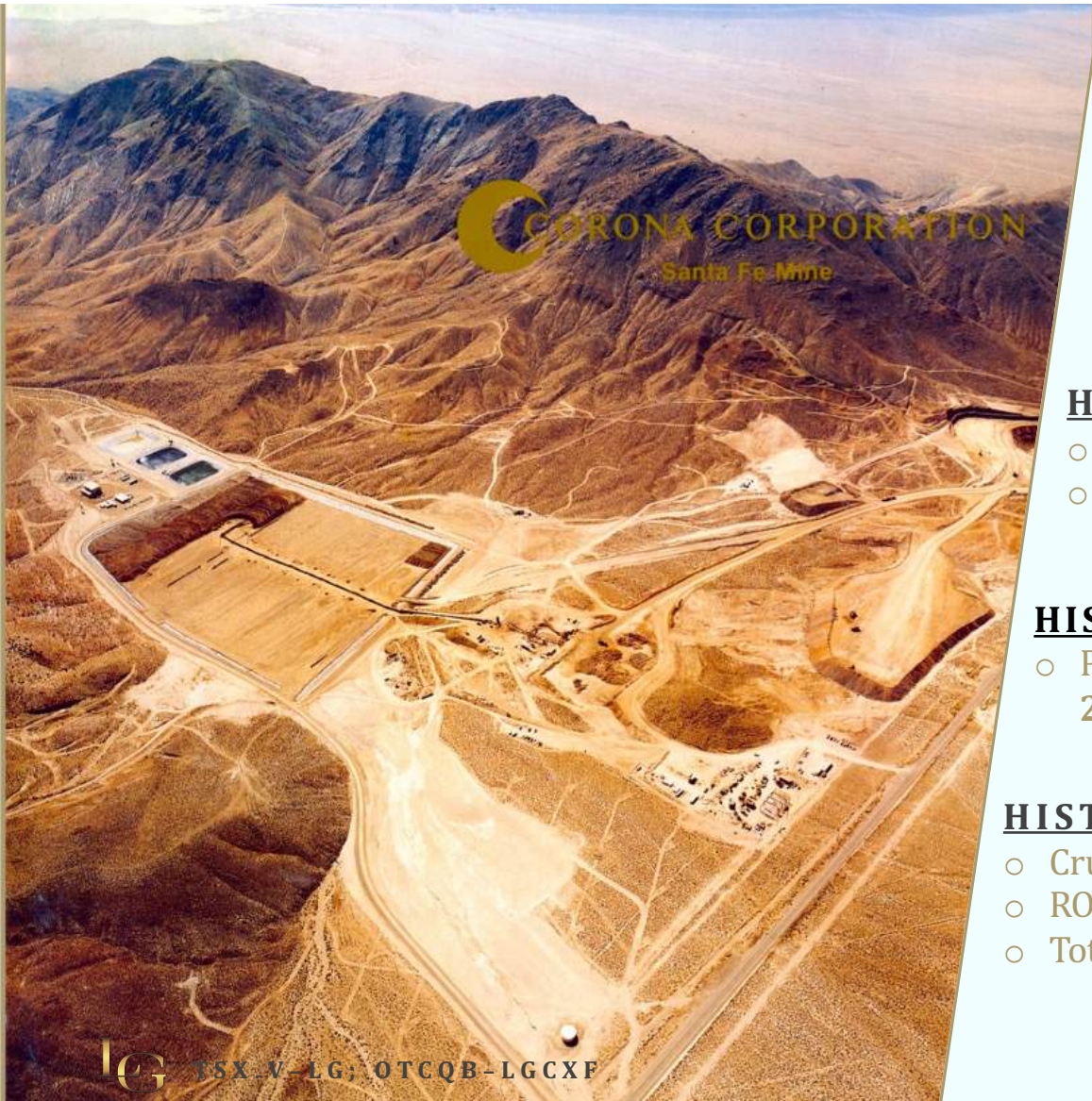
SANTA FE PIT

ROUTE TO SUBSTATION

ROAD ACCESS
POWERLINE TO SUBSTATION ON LG PROPERTY

SLAB-CALVADA COMPLEX

PIT EXPANSION



HISTORIC MINING 1988-1994

MINED BY CORONA GOLD

HISTORIC PRODUCTION BREAKDOWN

- 356,000 ounces Au
- 784,000 ounces of Ag (NV Div. of Minerals, www.ndomdata.com)

HISTORIC RECOVERIES PROJECT WIDE

- Project-wide gold recoveries of **74.4%** for gold and **29.0%** for silver at a ½-inch crush size

HISTORIC MINE PRODUCTION TOTALS

- Crushed rock and run of mine 11.5M tons @ 1.18 g/t Au
- ROM 4.4M tons @ 0.56 g/t
- Total leached rock is 15.9M tons



SLAB CALVADA COMPLEX



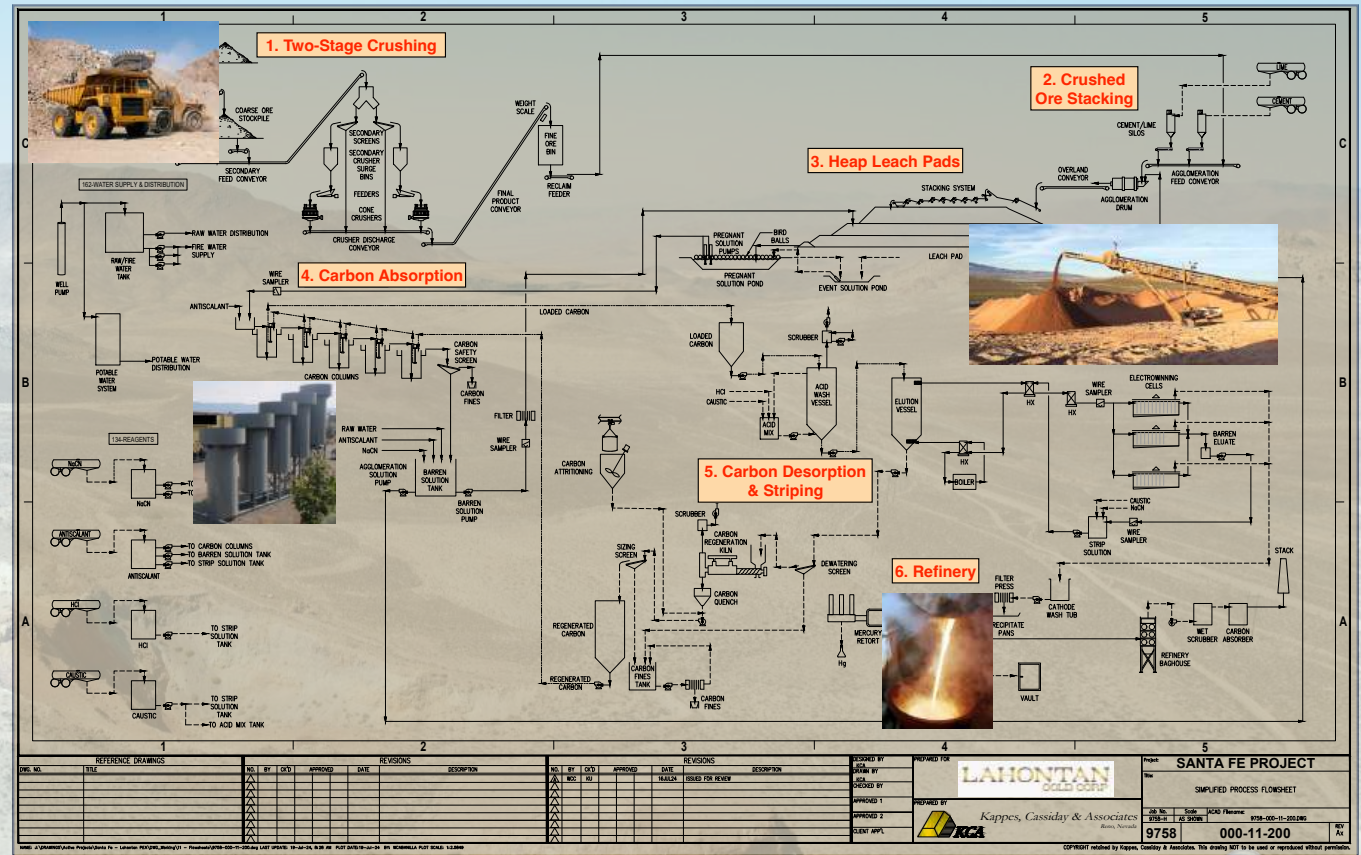
PREVIOUSLY MINED PITS MINED BY CORONA GOLD FROM 1988-1994

Met Testing Results–Optimize Flow Sheet

KEY HIGHLIGHTS

SANTA FE MINE

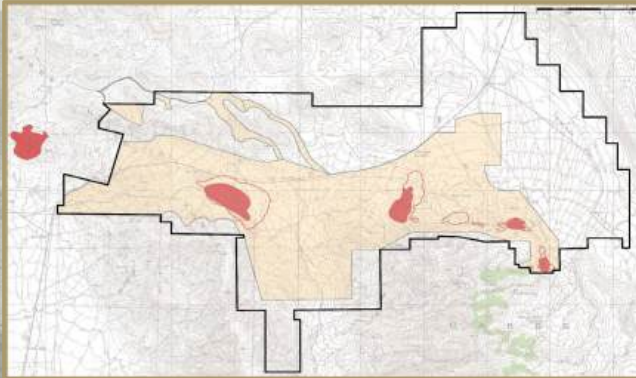
1. **CN-soluble gold analyses** show potential at Calvada highlight opportunities to increase gold recovery: **91.5% CN-soluble gold reported vs. previously estimated gold recoveries of 71%**
2. **York samples** also demonstrated upside in gold recoveries, with up to **91.0% CN-soluble gold, and averaging 78.4%**
3. **Preg Robbing Potential:** only three of 205 samples analyzed exhibited aggressive preg robbing potential



Preliminary flow sheet

SANTA FE MINE- PATH WAY TO PRODUCTION

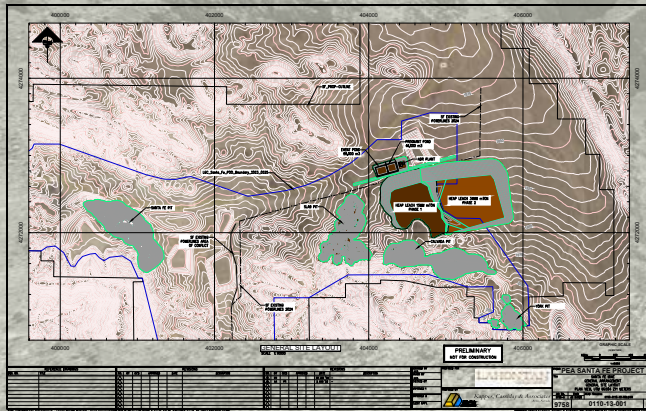
PLAN OF OPERATION & MINE PLAN OF OPERATION



PLAN OF OPERATIONS

- Advanced Permitting Process covers 12.2 km² area
- Permit will cover 50% of Land Package with over 700 Permitted Drill Holes
- Massive potential to grow resource through the drill bit

BOTH PERMITS RUN IN PARALLEL OF EACH OTHER

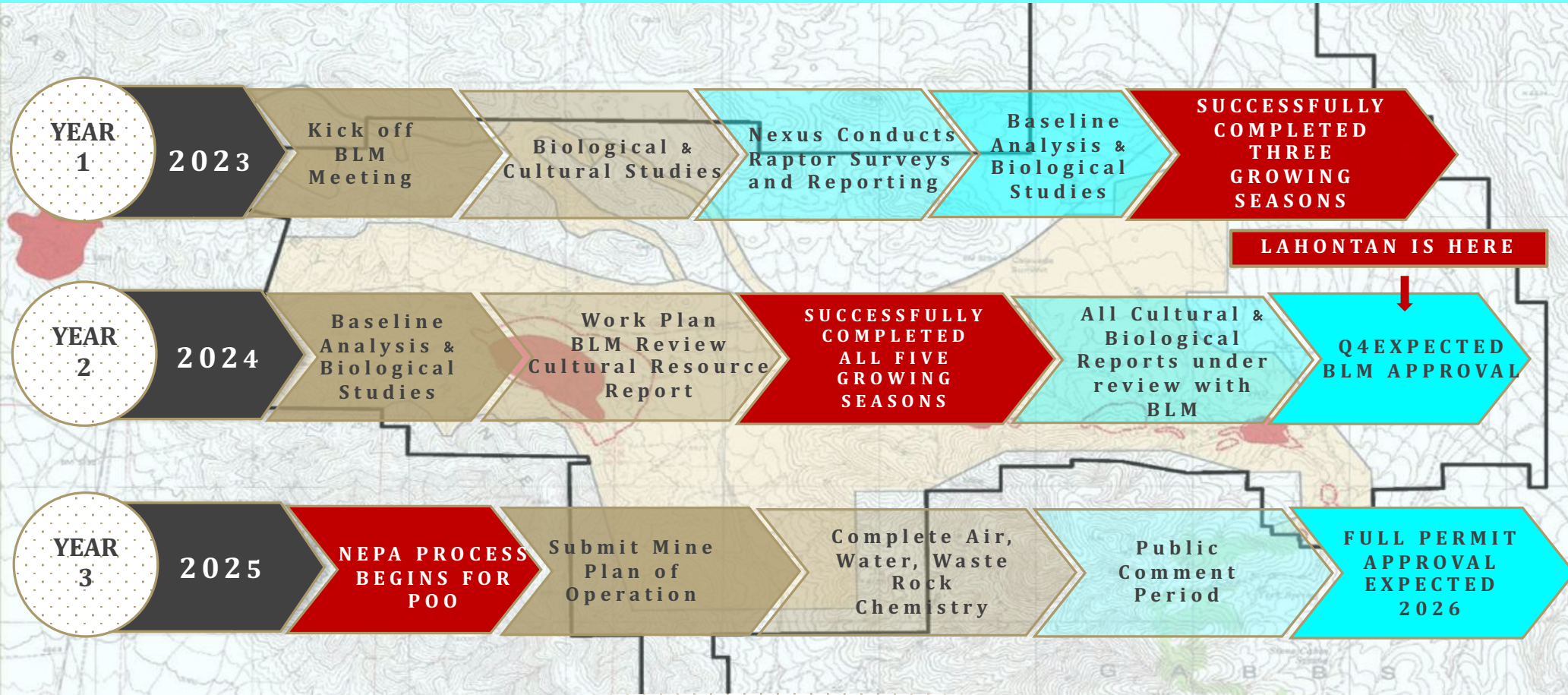


MINE PLAN OF OPERATIONS

- Mine POO regulated by BLM, runs in parallel to Exploration POO, covers siting of mine facilities
- State permitting through NDEP covers air, water, waste rock characterization; simultaneous with BLM permitting
- Targeting permit to build 2026

SANTA FE MINE- PATH WAY TO PRODUCTION

PLAN OF OPERATION & MINE PLAN OF OPERATION RUN IN PARALLEL



2026 THE BUILD OUT



INTRODUCING WEST SANTA FE OUR NEW SATELLITE ASSET

WEST SANTA FE OXIDE OXIDE OXIDE

WHAT TO KNOW

WEST SANTA FE

1 LOCATION LOCATION LOCATION

- Located only 13 km west of the Flagship Santa Fe Mine
- District Scale Land Package

2 SIGIFICANT HISTORIC DATABASE

- Outlines a shallow oxide Au & Ag deposit of + 0.5-1.0M ounces starting at surface*

3 SANTA FE LOOK-A-LIKE

- Open-pit mining configuration with low-cost potential as a satellite to Santa Fe

4 LOW COST OPTION AGREEMENT TO ACQUIRE 100% OF THE PROPERTY

- Back-end loaded payments for seven years can be made with combination of shares and cash
- Total buyout \$1.8M
- Total expenditures over seven years \$1.4M sufficient to define maiden mineral resource estimate

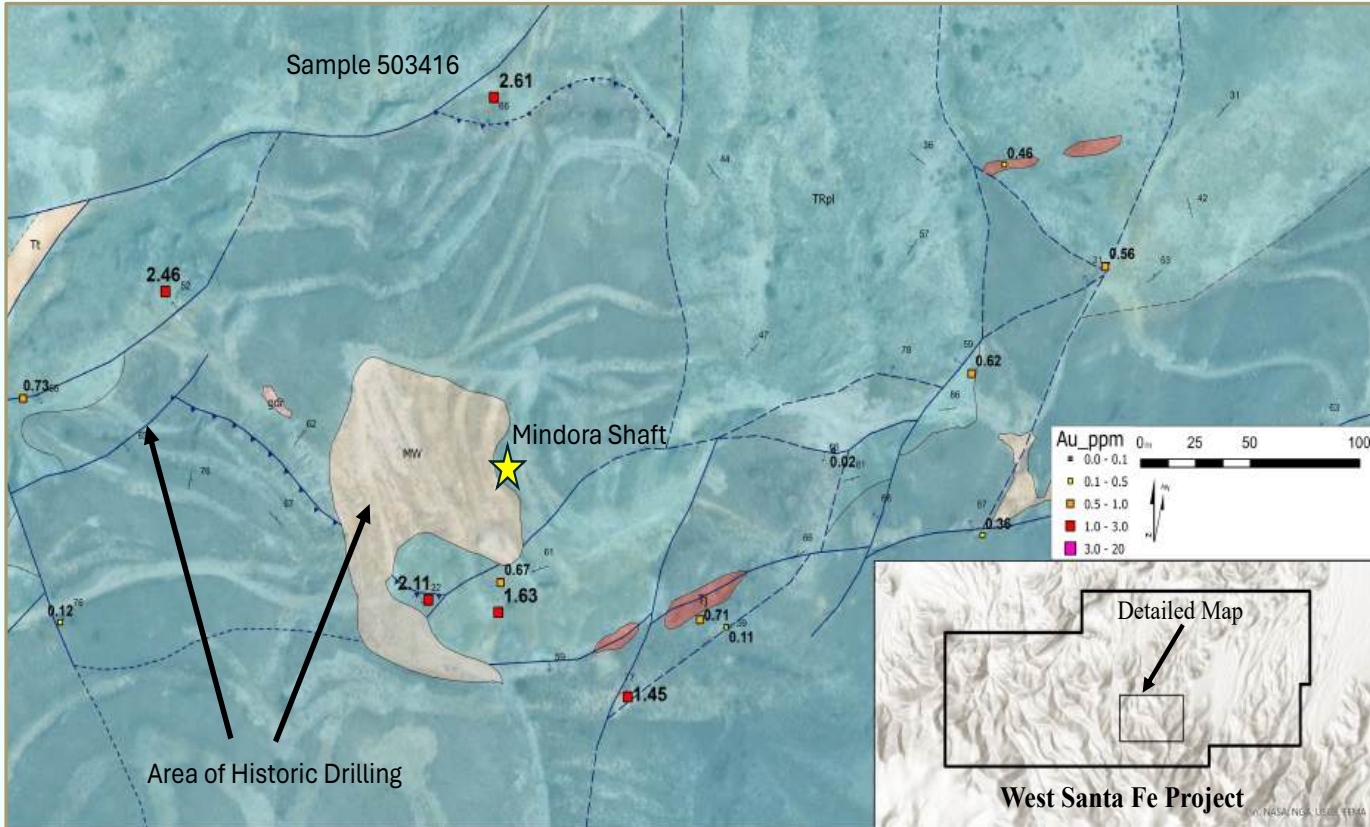
*The exploration target at West Santa Fe is conceptual in nature and is based on the size of the known mineralized zones, and gold and silver grades from historical drilling. The qualified person has not completed sufficient work to verify the historical information on West Santa Fe and this information should not be relied on.



WEST SANTA FE HIGH-GRADE SURFACE SAMPLING

WHAT TO KNOW

WEST SANTA FE



1

WELL DEFINED STRUCTURE

- Sampling and mapping has helped identify structural controls to Au & Ag mineralization
- Intersections of northeast striking high-angle faults and low-angle thrust faults are key controls

2

ROCK CHIP SAMPLES

- Contains up to **2.61 g/t Au and 899 g/t Ag** (14.60 g/t Au Eq)

3

HIGH GRADE SILVER

- Historic drilling underscore the importance of Ag at West Santa Fe

Gold grades in g/t are shown against a backdrop of mapped fault structure. Note that the highest grades encountered are adjacent to the areas of historic drilling and expand the potential target size at West Santa Fe.



WHAT TO KNOW

WEST SANTA FE

1. DRILLING TO DATE

- Au & Ag begins at surface
- Mineralization continues down-rake
- All Oxide!!!

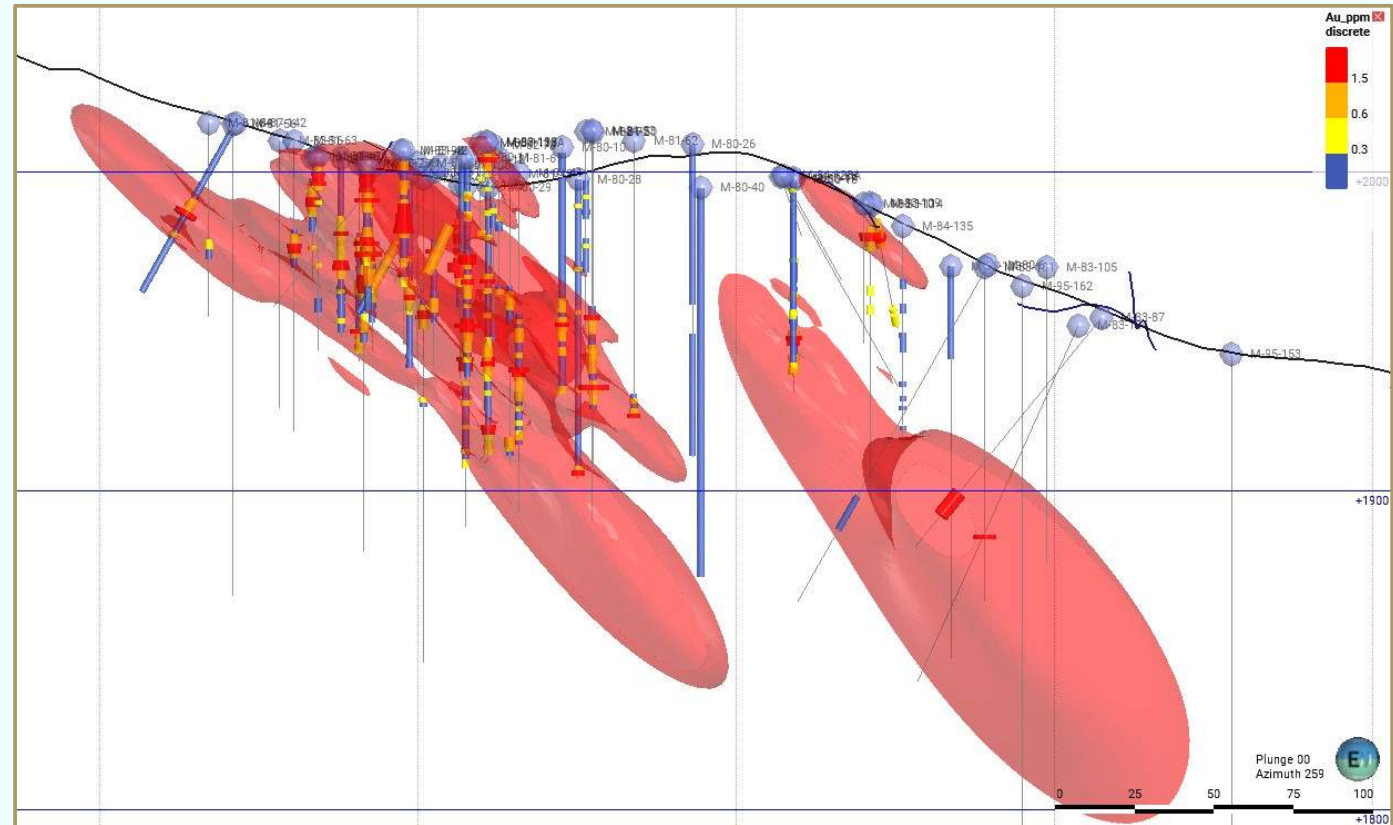
2. 0.31 G/T AU SHELL OUTLINE

- Look alike to Santa Fe
- Possible low-cost satellite operation
- Historic drilling shows a large mineralized system of Au & Ag*

3. PLANNED DRILL PROGRAM

- 3000 metres of drilling planned
- Maiden resource planned

WEST SANTA FE EXCELLENT RESOURCE GROWTH POTENTIAL



*The exploration target at West Santa Fe is conceptual in nature and is based on the size of the known mineralized zones, and gold and silver grades from historical drilling. The qualified person has not completed sufficient work to verify the historical information on West Santa Fe and this information should not be relied on.



LAHONTAN'S KEY CATALYST 2024

1 ✓ METALLURGICAL REPORT FROM KAPPES CASSADY

2 ✓ EXTENSIVE MAPPING & SAMPLING AT WEST SANTA FE
○ Drill West Santa Fe Q4

3 SUBMIT PLAN OF OPERATION (POO) Q4

4 PEA ON SANTA FE Q4

The image features a large, golden 'LG' logo at the top center, with 'LAHONTAN' and 'GOLD CORP' in a similar golden font below it. The background is a landscape of rolling hills under a dramatic, cloudy sky at sunset or sunrise. A dark SUV is parked on a dirt road in the lower left, and a small pond is visible in the lower right. The overall tone is professional and natural.

LG

LAHONTAN

GOLD CORP

TSX.V: LG | OTCQB: LGCXF

CORPORATE OFFICE

80 Richmond Street West Suite 204
Toronto, ON
M5H 2A4, Canada
Telephone: 1.613.692.7704

FIELD OFFICE

364 E Street Hawthorne
NV 89415 United States
Telephone: 1.775.945.6140