



RELEVANT GOLD

TSXV:RGC
OTCQB:RGCCF



DEFINING A NEW MEGA-DISTRICT IN WYOMING WITH ABITIBI-SCALE POTENTIAL



CAUTIONARY STATEMENT

This presentation contains certain statements that constitute forward looking information within the meaning of applicable securities laws. These statements relate to future events of Relevant Gold Corp. (“Relevant” or “the Company”). Any statements that express or involve discussions with respect to predictions, expectations, beliefs, plans, projections, objectives, assumptions or future events or performance (often, but not always, using words or phrases such as “seek”, “anticipate”, “plan”, “continue”, “estimate”, “expect”, “forecast”, “may”, “will”, “project”, “predict”, “potential”, “targeting”, “intend”, “could”, “might”, “should”, “believe”, “outlook” and similar expressions) are not statements of historical fact and may be forward looking information. Forward looking information in this presentation includes, but is not limited to, statements with respect to successfully consolidating further land packages, Relevant’s ability to raise sufficient capital to fund exploration programs and its obligations under property agreements, seek a listing on a recognized stock exchange, drilling plans, financing success, discovery and production of minerals, metal prices and currency exchange rates, timing of technical reports and drill results, corporate and technical objectives, permitting success and relationships with stakeholders.

Forward looking information involves known and unknown risks, uncertainties and other factors which may cause the actual results, performance or achievements of the Company to be materially different from any future results, performance or achievements expressed or implied by the forward-looking information. Such risks include, among others, the inherent risk of the mining industry; adverse economic and market developments; the risk that the Company will not be successful in completing additional acquisitions; risks relating to the estimation of mineral resources; the possibility that the Company’s estimated burn rate may be higher than anticipated; risks of unexpected cost increases; risks of labour shortages; risks relating to exploration and development activities; risks relating to future prices of mineral resources; risks related to work site accidents, risks related to geological uncertainties and variations; risks related to government and community support of the company’s projects; risks related to global pandemics and other risks related to the mining industry. The Company believes that the expectations reflected in such forward-looking information are reasonable, but no assurance can be given that these expectations will prove to be correct and such forward-looking information should not be unduly relied upon. These statements speak only as of the date of this presentation. The Company does not intend, and does not assume any obligation, to update any forward-looking information except as required by law.

This document does not constitute an offer to sell, or a solicitation of an offer to buy, securities of the Company in Canada, the United States or any other jurisdiction Any such offer to sell or solicitation of an offer to buy the securities described herein or during the presentation will be made only pursuant to subscription documentation between the Company and prospective purchasers. Any such offering will be made in reliance upon exemptions from the prospectus and registration requirements under applicable securities laws, pursuant to a subscription agreement to be entered into by the Company and prospective investors.

The scientific and technical contents of this presentation have been approved by Mr. Brian C. Lentz, CPG, Chief Exploration Officer of the Company, who is a “Qualified Person” as defined by Canadian National Instrument 43-101 (Standards of Disclosure for Mineral Projects). Mr. Lentz is not independent of the Company.





OPPORTUNITY OF SCALE

The Abitibi Gold Belts; Prolific Orogenic Shear Zone Hosted Gold Deposits, > 200 Moz

Orogenic gold accounts for 1/3 of the world's gold production. The Abitibi is the most productive orogenic gold system on Earth.

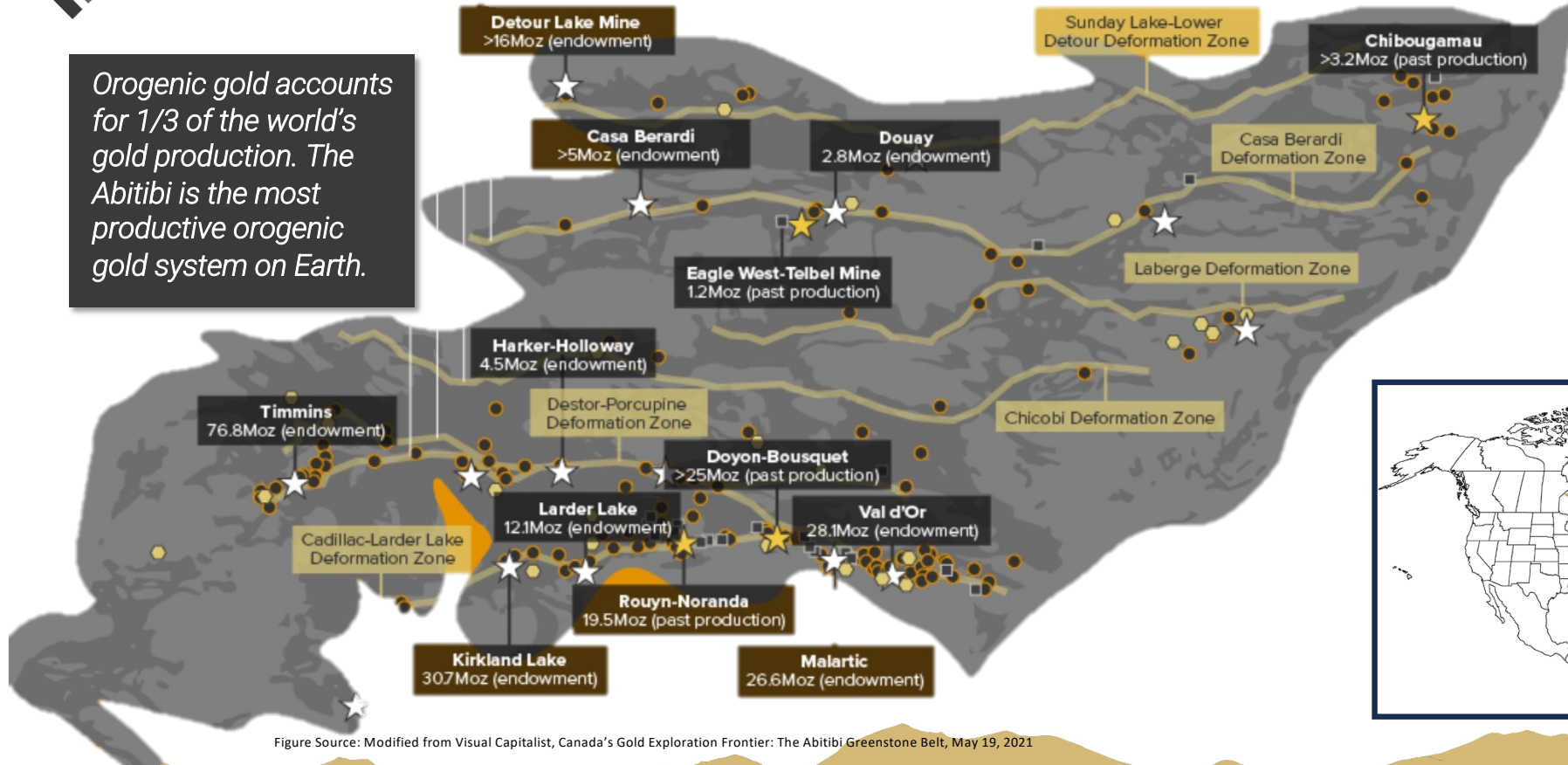


Figure Source: Modified from Visual Capitalist, Canada's Gold Exploration Frontier: The Abitibi Greenstone Belt, May 19, 2021





*“Now imagine if you could buy a ticket on the potential to **discover the next Abitibi** — virtually the entire belt — in the mining-friendly jurisdiction of **Wyoming**. That’s exactly the potential that Relevant Gold is offering investors.”*

Gold Newsletter
Vol. LI April 2024

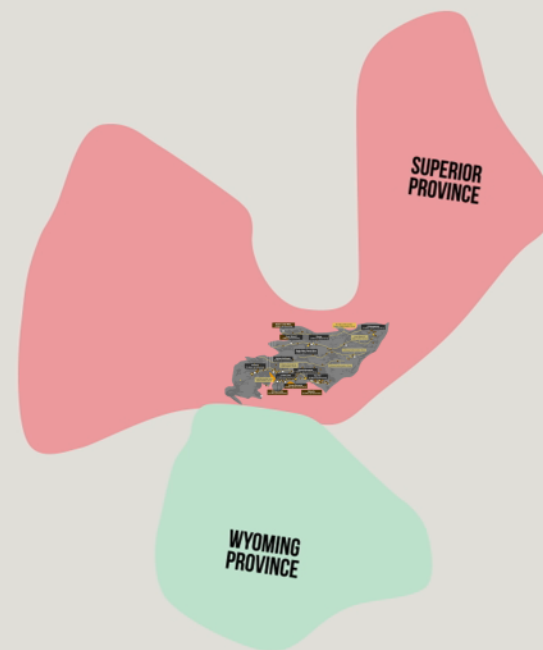
Public domain photo. Gold mine, Lamaque, Abitibi, Quebec 1920



RELEVANT GOLD
TSXV:RGC | OTCQB:RGCCF



TSXV:RGC
OTCQB:RGCCF

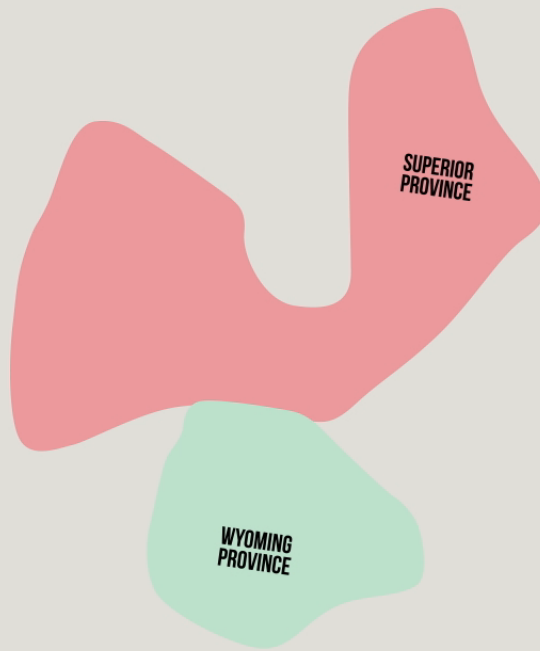


**Wyoming and Abitibi Were Connected When Gold Formed
~2.7 – 2.6 Billion Years Ago**



RELEVANT
GOLD

TSXV:RGC
OTCQB:RGCCF





A UNIQUE DISCOVERY OPPORTUNITY IN
THE AMERICAN ABITIBI

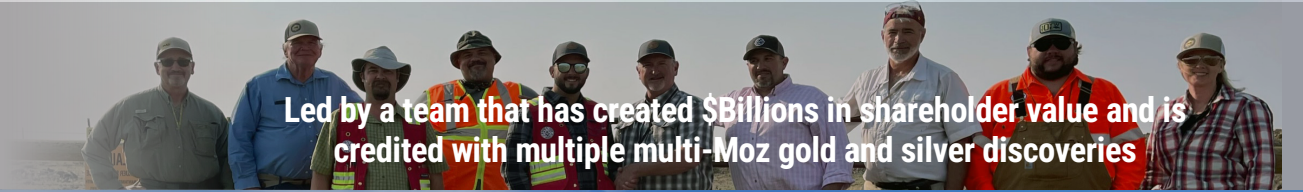


RELEVANT GOLD
TSXV:RGC | OTCQB:RGCCF



DEVELOPING THE AMERICAN ABITIBI

WORLD CLASS TEAM



Led by a team that has created \$Billions in shareholder value and is credited with multiple multi-Moz gold and silver discoveries

BELT-SCALE PORTFOLIO



- 50k-acre land package
- Mining friendly jurisdiction (Wyoming)
- 5 district-scale projects in 2 camps
- Pipeline of discovery opportunities

STRONG CORPORATE STRUCTURE

~75M shares outstanding. Key shareholders include:



Mr. Rob McEwen

EXPLORATION AT SCALE



- 3 exploration permits
- 17 district-scale targets
- 2 drill-proven orogenic systems
- High-grade gold + silver + copper



MEET THE TEAM

BOARD OF DIRECTORS



INDEPENDENT DIRECTOR

Dr. Peter Megaw, PhD.
40+ Years Experience
PhD., Economic Geology
Cofounder, MAG Silver Corp.



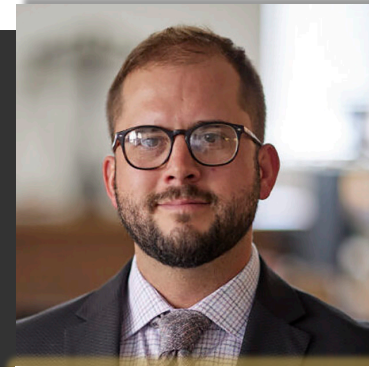
INDEPENDENT DIRECTOR

Sarah Weber
20+ Years Experience
P. Geo / MBA
CEO, C3 Alliance Corp.



INDEPENDENT DIRECTOR

Ronald L. Parratt
40+ Years Experience
M.Sc. Economic Geology
Cofounder, Auex Ventures, Inc.



DIRECTOR, CEO

Rob Bergmann
15+ Years Experience
B.Sc. Geology
Founder, Relevant Gold Corp.



DIRECTOR, CXO

Brian Lentz
15+ Years Experience
B.Sc. Geology / P. Geo
Founder, Relevant Gold Corp.

MANAGEMENT



Mahesh Liyanage
RGC CFO



Sam Siebenaler
VP Corporate Dev.



Kristopher Jensen
Corporate Comms. Mgr.



Dr. Dean Peterson, PhD
Technical Advisor



Dr. Thomas Campbell, PhD
Technical Advisor



Dr. Kevin Chamberlain, PhD
Technical Advisor



FULL BIOS CAN BE FOUND AT RELEVANTGOLDCORP.COM

RELEVANT GOLD
TSXV:RGC | OTCQB:RGCCF



CORPORATE STRUCTURE

SHARE BREAKDOWN:

Issued and Outstanding: 74,672,526
 Reserved for Issuance: 27,336,890*

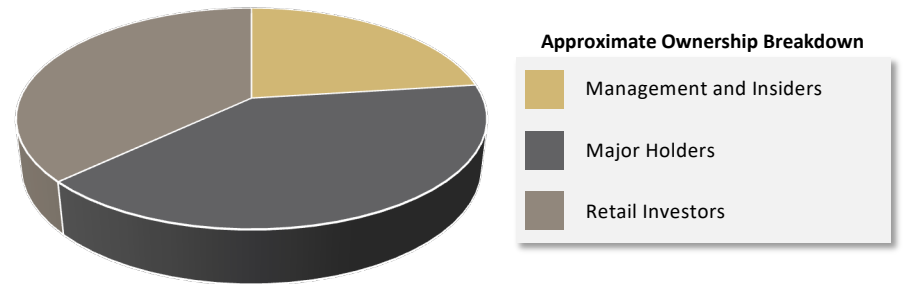
* Includes:

| | | | |
|---------------------------|---------------------|-------------|-------------|
| Founder's Warrants: | 12,000,000 @ \$0.13 | Expire 2025 | \$1,560,000 |
| Management/Board Options: | 3,750,000 @ \$0.35 | Expire 2027 | \$1,312,500 |
| General Warrants: | 11,586,890 @ \$0.35 | Expire 2026 | \$4,055,411 |

Public Float: 53.05%

MAJOR SHAREHOLDERS: (as of 7/9/2024)

- + Management and Insiders (>20%)
- + Kinross Gold
- + New Gold Inc.
- + Mr. Rob McEwen
- + Ultra High Net Worth Individuals
- + Retail Investors





TARGET: OROGENIC GOLD

HOW OROGENIC GOLD IS FORMED

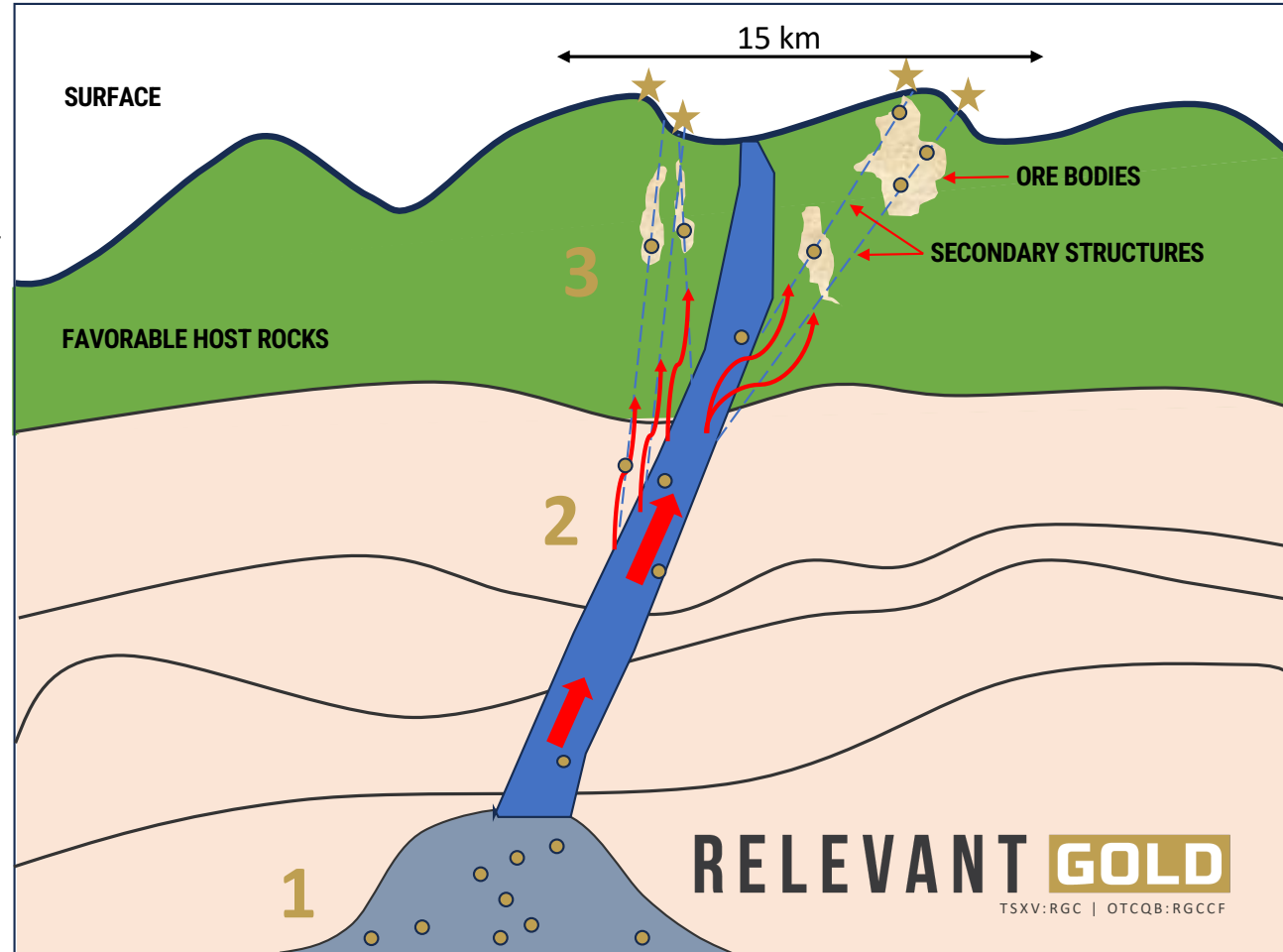
Orogenic gold deposits account for about 1/3 of the world's gold production. Here is how they formed:

- 1** **SOURCE:** Metal enriched source fluid deep in the earth's subsurface
- 2** **PATHWAY:** Major, deep rooted fault structures formed, creating pathways that allowed these gold enriched fluids to rise
- 3** **TRAP:** Gold-bearing fluids become trapped in secondary structures of favorable host rocks, allowing the gold to precipitate out.

98%

of all the orogenic gold produced in the Timmins, Kirkland Lake, and Hemlo camps in the Abitibi (106.25 Moz) was found in secondary structures within 7 km of the primary fault structure (i.e. Destor Porcupine Fault).²

1. Frimmel, H. E. Earth's continental crustal gold endowment. *Earth Planet. Sci. Lett.* **267**, 45–55 (2008)
2. Peterson, Dean. Ph.D. Dissertation, 2001





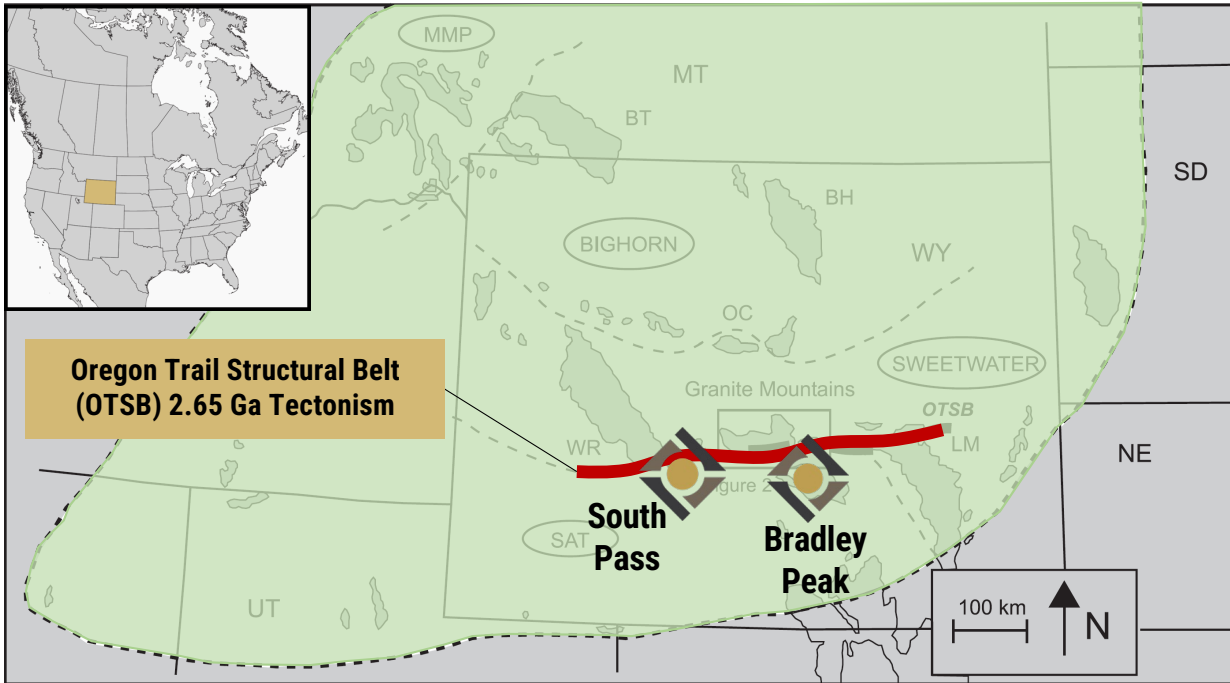
WYOMING

THE AMERICAN ABITIBI

RELEVANT GOLD
TSXV:RGC | OTCQB:RGCCF



RELEVANT GOLD CAMPS | NEW ABITIBI



*Figure modified from Chamberlain et. al. 2006

TECHNICAL SUMMARY

- ◆ Craton scale structural zone
- ◆ Same age and orientation as belts in Superior Province
 - ◆ Destor Porcupine, Cadillac & Larder Lake
- ◆ Cross-cutting rock types known to host Orogenic and VMS style mineralization
- ◆ Historic gold mines throughout the OTSB across the Wyoming Province

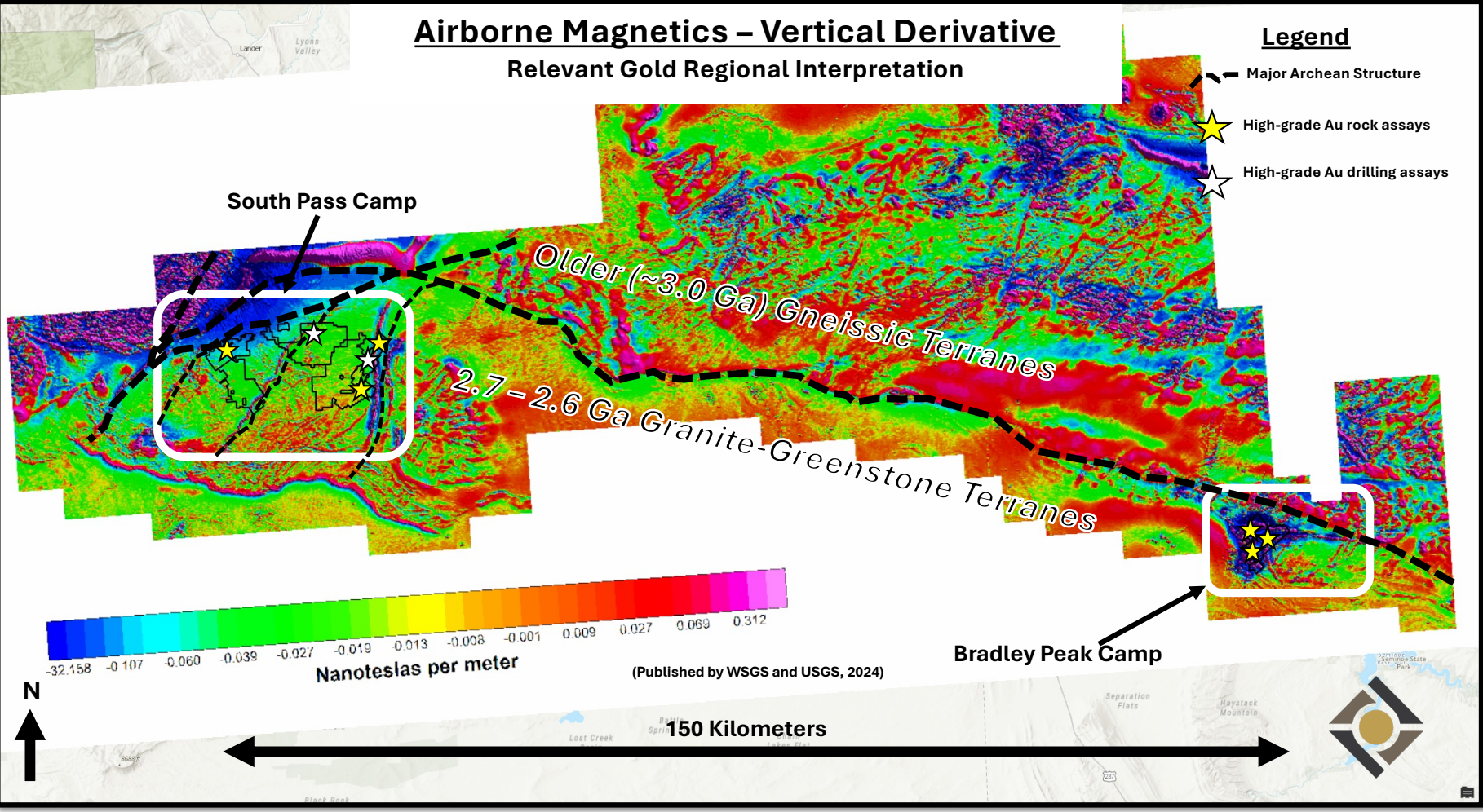


Airborne Magnetics – Vertical Derivative

Relevant Gold Regional Interpretation

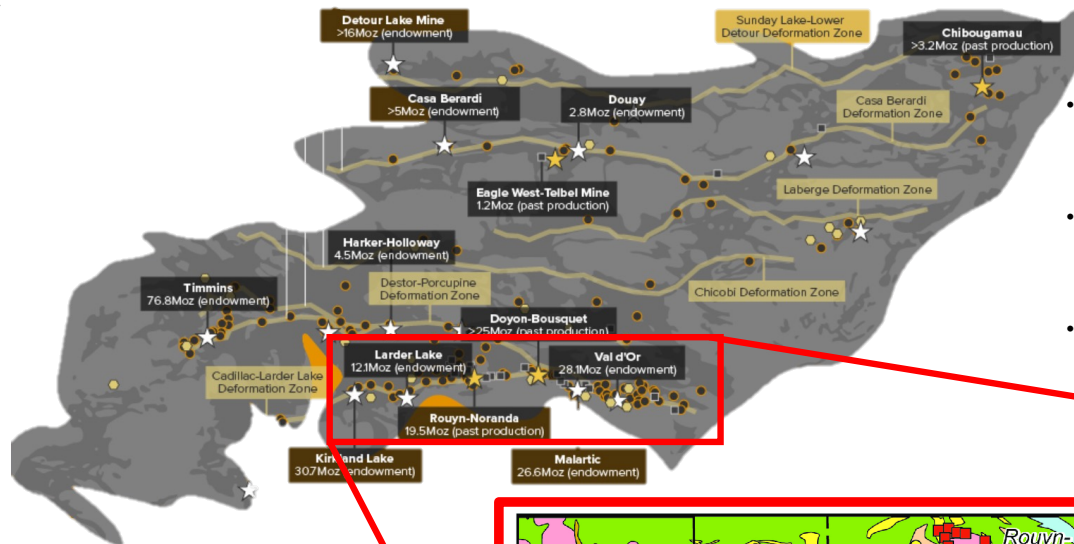
Legend

- Major Archean Structure
- High-grade Au rock assays
- High-grade Au drilling assays





BELT SCALE OPPORTUNITY



- New Wyoming magnetics survey confirms Archean structure comparable in size and scale to the Cadillac-Larder Lake Deformation Zone
- Gold mineralization commonly occurs in secondary structures within 7 km of the major structures in the Abitibi and Wyoming.
- *The magnetic data confirms we have some of the best discovery opportunities on Wyoming's main street!*

Figure Source: Modified from Visual Capitalist, Canada's Gold Exploration Frontier: The Abitibi Greenstone Belt, May 19, 2021

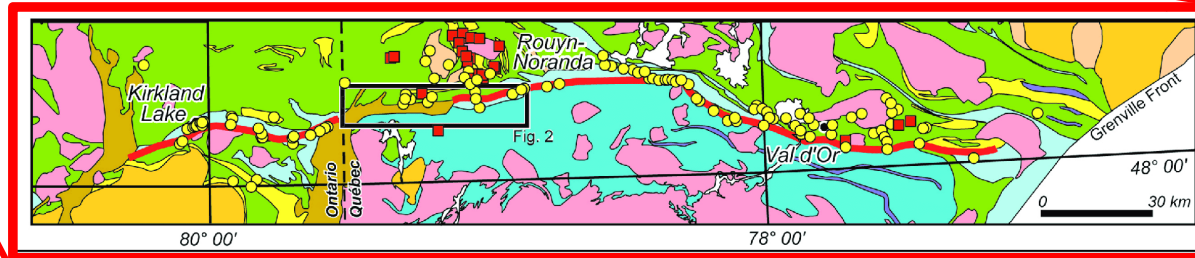


Figure Source: Rabeau et. al., 2011, Modified from Gold Potential of a Hidden Archean Fault Zone: The Case of the Cadillac-Larder Lake Fault, VL - 19, DO - 10.2113/gsemg.19.3-4.99, JO - Exploration and Mining Geology ER





PORTFOLIO AT A GLANCE

2 gold camps, 5 district-scale projects, 12+ high-grade targets

BRADLEY PEAK CAMP



10,800 acres of BLM and state lease claims located in the Seminoe Mountains in central Wyoming

- Highlights:
- >21 km of potentially mineralized shear zones
 - Identified 3 distinct target zones (Kortes, Apex, and Deserted Treasure)
 - 7 high-grade targets identified
 - 46.8 g/t Au, 7.8% Cu, 2% Zn, (RGC 2024 samples)
 - 5.3 g/t Au, 107 g/t Ag, and 6.25% Cu (RGC 2023 samples)
 - 6.5 g/t Au, 3.7% Cu (RGC historic sample)
 - 89 g/t Au, 5.8% Cu (historic samples)

SOUTH PASS CAMP



9,600 acres of BLM claims including ~1,000 acres of patent/private

- Highlights:
- ~3,500m drill program in 2022
 - 54% of holes returned anomalous gold
 - Top intercept: 83.8 g/t Au over 1 m
 - Rock chip assays up to 160 g/t Au from trench
 - Abundant coarse visible gold
 - GBSZ extended to ~2km strike
 - 2 high-grade gold targets identified



14,000 acres of BLM claims including 58 acres of patented claims at Hidden Hand

- Highlights:
- 1,560 m drill program (2023) cut gold in 10 of 11 holes
 - 1,690 oz/ton Au (historic sample)
 - 62 g/t Au, 8.1% Cu (RGC sample)
 - > 10 km of potentially mineralized shear zones
 - Strong arsenic correlation
 - 6 district-scale targets defined



>2,000 acres of BLM claims, including historic B&H and Shields mines. Adjacent to the historic Carissa Mine

- Highlights:
- 4.6 g/t Au rock chip sample (RGC)
 - 18.9 g/t Au and 486 g/t Ag (RGC 2023 samples)
 - > 3 km potentially mineralized shear zone
 - Estimated historic gold production at adjacent Carissa Mine: 200,000 oz Au



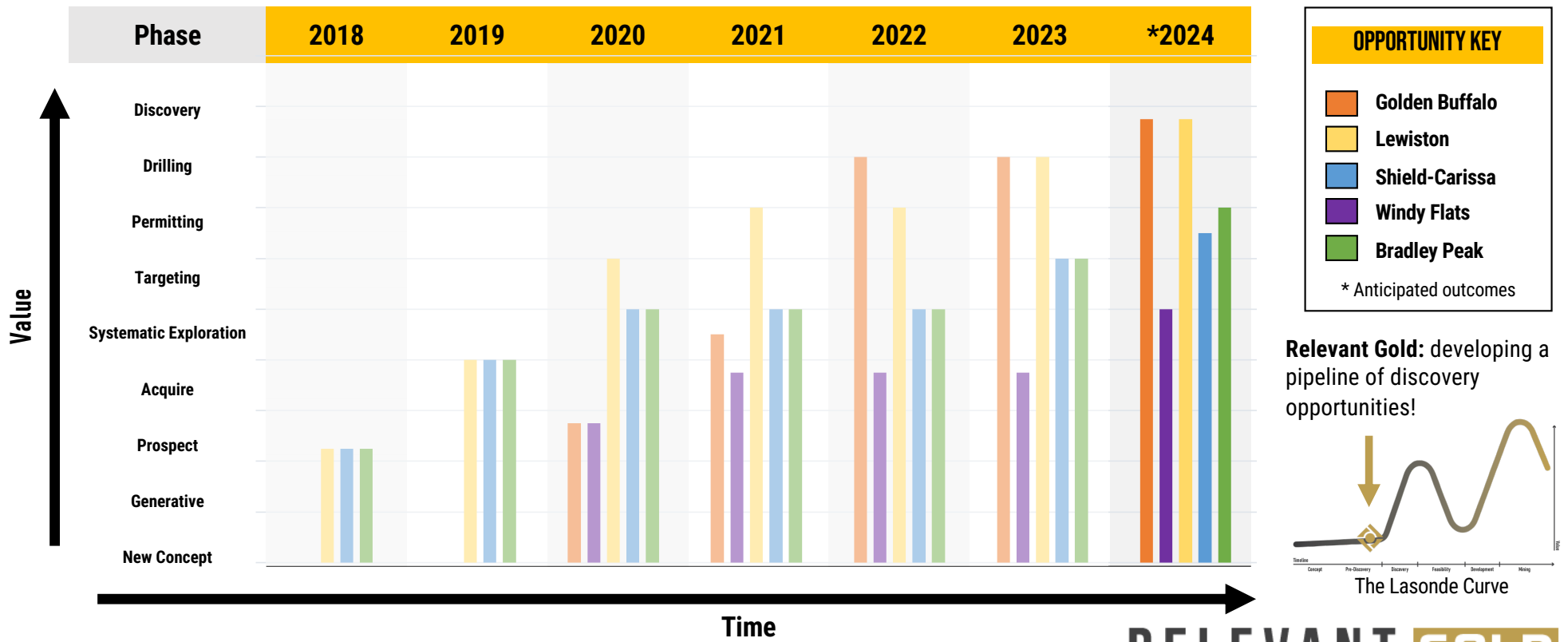
6,200 acres of BLM claims

- Highlights:
- Greenfields project with large unexplored zone of shearing recently exposed because of the wind
 - Reconnaissance mapping identified a massive multi-km quartz rich shear zone 2023 airborne geophysics depicts mafic dykes cross-cutting Archean structures under cover
 - 2024 soil sampling program underway to assess geochemistry and begin to define targeting potential





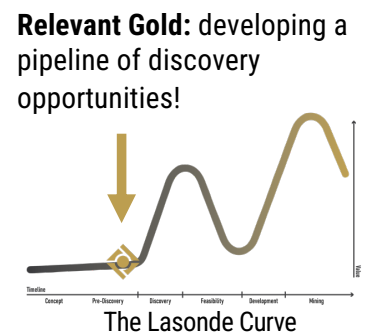
APPROACH | SYSTEMATIC EXPLORATION



OPPORTUNITY KEY

- Golden Buffalo
- Lewiston
- Shield-Carissa
- Windy Flats
- Bradley Peak

* Anticipated outcomes





PROOF OF CONCEPT

Orogenic Gold Checklist; RGC district-scale exploration checks all the boxes

| | CRITERIA | DESCRIPTION |
|---|----------------------|-----------------------------------------------------------------------------------------------------------------------------------------------------------------------------------------------------------------------------------------------------------|
| ✓ | Structural Setting | <ul style="list-style-type: none"> Major east-west Archean fault structures cutting across WY Mineralized secondary shear zones Brittle-ductile transition Complex re-folded folds Rheologic contrasts |
| ✓ | Host Rock | <ul style="list-style-type: none"> Amphibolites & greenstones Greywackes Carbonate facies iron formation |
| ✓ | Alteration | <ul style="list-style-type: none"> Chlorite, Carbonate, Sericite, Epidote, Sulfidation, Silica |
| ✓ | Geochemistry | <ul style="list-style-type: none"> Au, Ag, As, Bi, Cu, Sb, Pb, Zn |
| ✓ | Mineralization | <ul style="list-style-type: none"> Orogenic gold + intrusion style mineralization styles High-grade and visible orogenic gold proven (168 g/t Au) Orogenic sulfide minerals; arsenopyrite, pyrrhotite, & pyrite |
| ✓ | Land Position | <ul style="list-style-type: none"> 5 district-scale assets across 150 km Archean belt Big enough to host the largest known orogenic type deposits Well established infrastructure, access, water, and power |
| ✓ | Scalable Opportunity | <ul style="list-style-type: none"> Connection to Abitibi during gold mineralization (2.65 ba) Multiple high-grade targets with Abitibi-scale potential |
| ✓ | Permitting | <ul style="list-style-type: none"> Streamlined State and Federal permitting pathway Multiple exploration permits in hand Wyoming has deep roots in mining and natural resources |



*2020 Trench sample collected by Golden Buffalo Mining Company





NEAR-TERM CATALYSTS

The 2024 exploration season will seek to **define the gold potential** with geophysics and drilling at South Pass and identify, refine and permit **high-grade drilling targets** at Bradley Peak.

2024 EXPLORATION CATALYSTS



ACQUISITIONS & PERMITTING

- ✓ Doubled the size of Bradley Peak through staking/leasing ~2,102 hectares (5,195 acres)
- ✓ Received drill permit at historic high-grade Burr target, Lewiston



ADVANCED GEOPHYSICS

- ✓ Advanced reprocessing and 3D inversion of 2023 airborne geophysical data
- ✓ Airborne EM survey planning and funding considerations
 - Exploring the use of State of Wyoming matching grant funds to support this effort.



DRILL TARGET REFINEMENT

- ✓ Robust 2024 mapping and sampling program at Bradley Peak defined drill targets at Apex
 - Finalizing permit application for 2025 drilling



FOLLOW UP DRILL PROGRAM

- ✓ Drill program at Lewiston (Burr target) commenced Sep. 2024
 - 1,000+ m program, 5-8 drill holes planned
 - Testing continuation of major structures to a depth of ~100m below high-grade historic mines

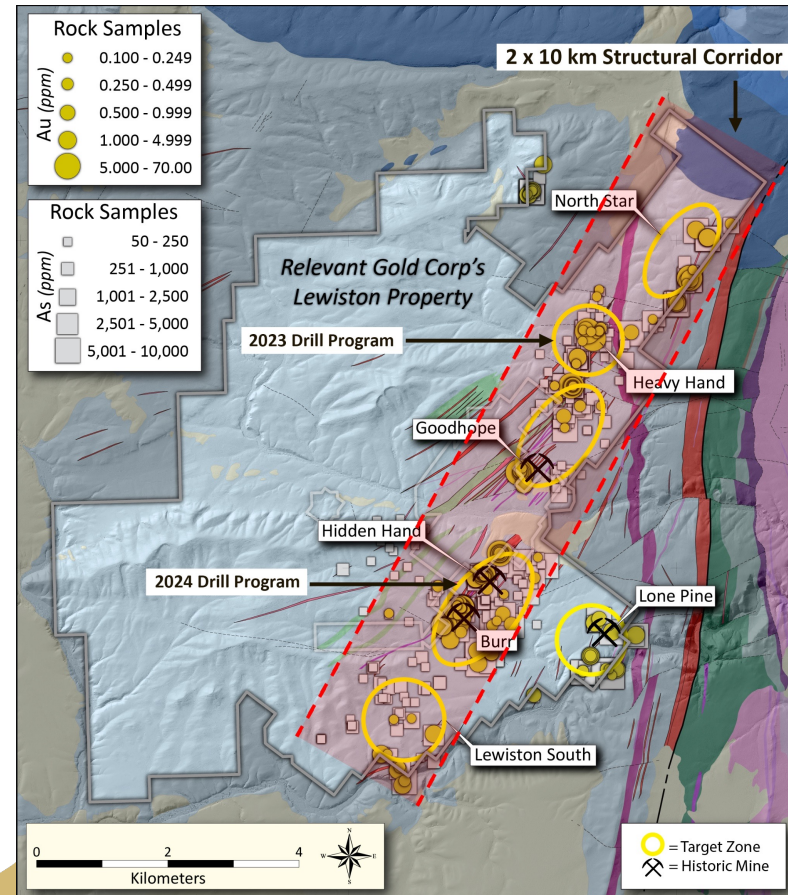




LEWISTON HIGHLIGHTS

PROJECT OVERVIEW

- 14,000 acres (5,665 ha) footprint
- 4 historic gold mines on property
- 6 high-grade targets defined
- 2023 Drill Program:
 - 1,560 m drilled at Heavy Hand target
 - Cut gold in 10 of 11 holes
 - Top interval: 1.9 g/t Au over 0.5 m, 0.34 g/t Au over 10 m
- 2024 Drill Program
 - 1,000+ m program planned at Burr target
- > 10 km of potentially mineralized shear zones
- 1,690 oz/ton Au (historic rock chip sample)
- 62 g/t Au, 8.1% Cu (RGC rock chip sample)
- Strong arsenic correlation





HIDDEN HAND HISTORIC CROSS SECTION



Target zone for drill testing

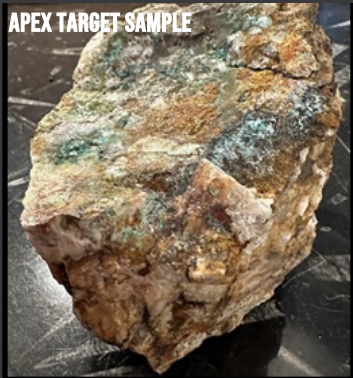
Known Zone of Mineralization

30 m

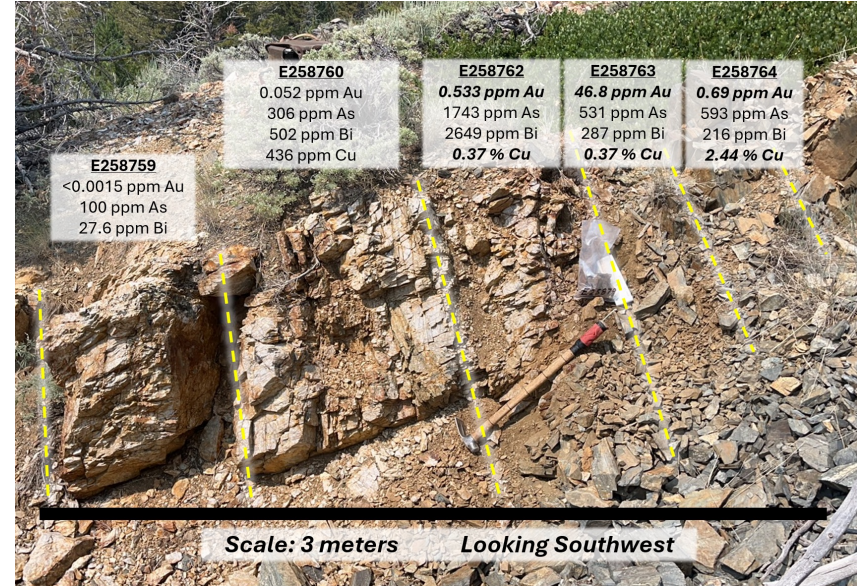


BRADLEY PEAK HIGHLIGHTS

PROJECT OVERVIEW



- 10,800 acres (4,391 ha) footprint
- 7 high-grade targets identified in 3 district-scale target zones
 - Kortés, Apex, and Deserted Treasure
- 46.8 g/t Au, 7.8% Cu, 2% Zn (RGC rock chip samples)
- 89 g/t Au, 5.8% Cu (historic rock chip sample)
- 2023 airborne geophysics depicts a massive 100+ km² fold hinge anomaly
- >2.5 km trend of mineralized structure at Apex
- 50+ km of new shear zones mapped
- 2024 mapping/sampling program results pending

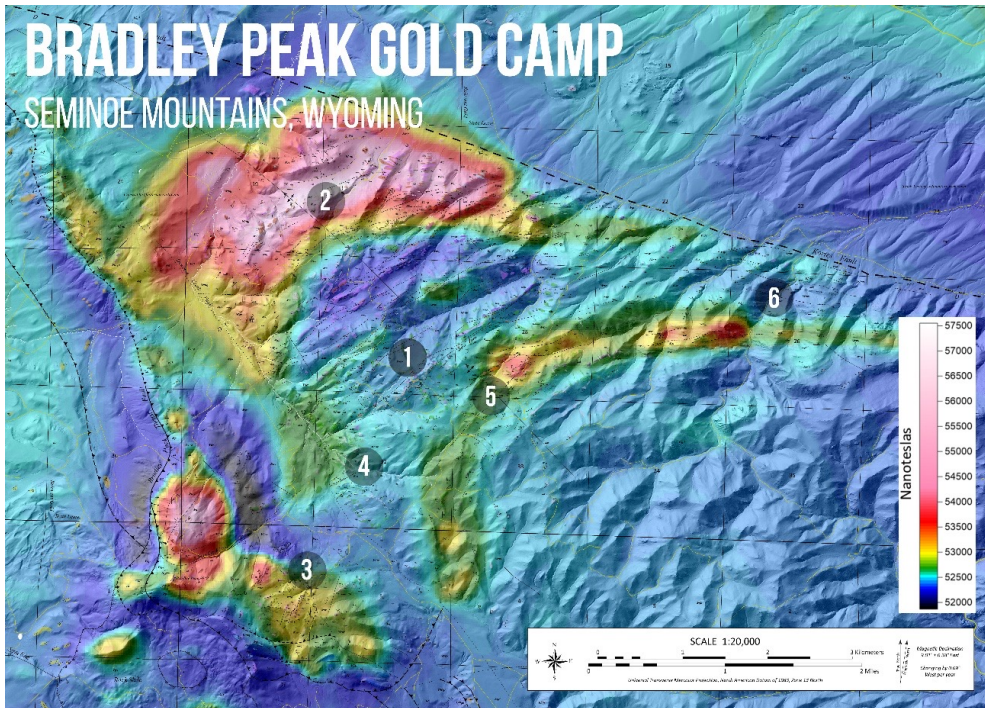


“The high-grade gold, silver, and copper targets we have identified at Bradley Peak show significant potential, and the geophysical data indicates this is an opportunity of scale. These new acquisitions secure additional prospective ground and create a buffer around our highest-priority targets as we focus on expediting drill permitting.” - RGC CEO Rob Bergmann





BRADLEY PEAK TARGETS



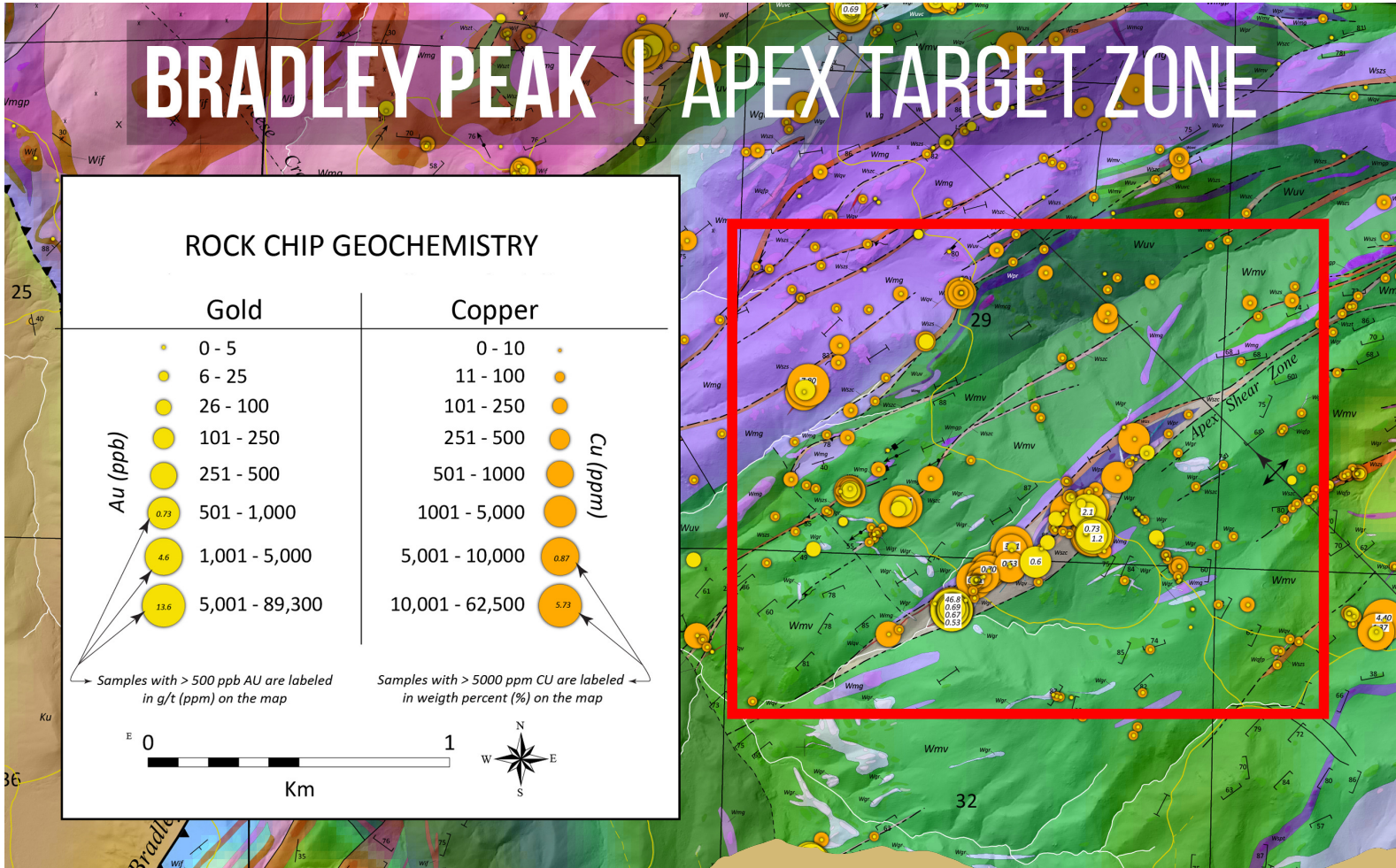
Summary of Bradley Peak Exploration Targets

| | 1. Apex | 2. Kortez | 3. Deserted Treasure | 4. Lost Mine | 5. Olmeh | 6. East Limb |
|-------------------------------|--------------------------------------------------------------------------------------------|-------------------------------------------------------------------------------|---------------------------------------------------------------------------|------------------------------------------------------------------------------------------------|-----------------------------------------------------------------------|------------------------------------------------------------------------------------------------|
| Highlighted RGC Grades | 46.8 g/t Au 7.8% Cu 2% Zn | 6.5 g/t Au 6.25% Cu 107 g/t Ag | 72.4 g/t Au 1.1% Cu | 4.54 g/t Au | 25 ppb Au; limited sampling | 0.52% Cu >30ppb Au; limited sampling |
| Scale | >2.5 km shear zone | >1.8 km shear zones | >3km ² area | >700m shear zone - open along strike | >500m shear zone- open along strike | >1.5km shear corridor |
| Host Rock | Sheared and altered Quartz-Feldspar-Porphry, intrusive rocks, mafic & ultramafic volcanics | Mafic to ultramafic metavolcanics, komatiites, metagabbro and iron-formation. | Amphibolite facies mafic metavolcanics, komatiites and intrusives | Amphibolite facies metavolcanics, komatiite, serpentinite and metagabbroic rocks | Amphibolite facies metavolcanics, serpentinite and metagabbroic rocks | Amphibolite facies metavolcanics, komatiites, and metagabbroic rocks |
| Mineralization Style | Orogenic gold and/or intrusion-related vein systems | Complex orogenic quartz-carbonate-chalcopyrite veins | Shear-hosted, orogenic, quartz-carbonate vein array in a broad fold hinge | Historic mine workings of a Quartz-Sericite-Ankerite-Pyrite schist with complex quartz veining | Quartz-Sericite-Ankerite-Pyrite schist with complex quartz veining | Historic mine workings of a Quartz-Sericite-Ankerite-Pyrite schist with complex quartz veining |
| Phase/Status | Drill ready – permitting in progress | Drill targeting | Drill targeting | Systematic Exploration | Prospect | Prospect |





BRADLEY PEAK | APEX TARGET ZONE





WHY INVEST?

TIGHTLY HELD STRUCTURE:

~75M shares
outstanding
(Major shareholders:
Kinross Gold, New
Gold, Rob McEwen)

UPSIDE MULTIPLIER:

A belt-scale concept
with a pipeline of
discovery
opportunities

FIRST MOVER ADVANTAGE:

50k-acre land package
with 5 district-scale
projects in mining-
friendly Wyoming

GRADE IS KING:

Proven high-grade
orogenic gold at
surface and at depth

STRONG MARKET POSITION:

A unique discovery
opportunity with many
near-term catalysts and
recent successes

HUMAN CAPITAL INFRASTRUCTURE:

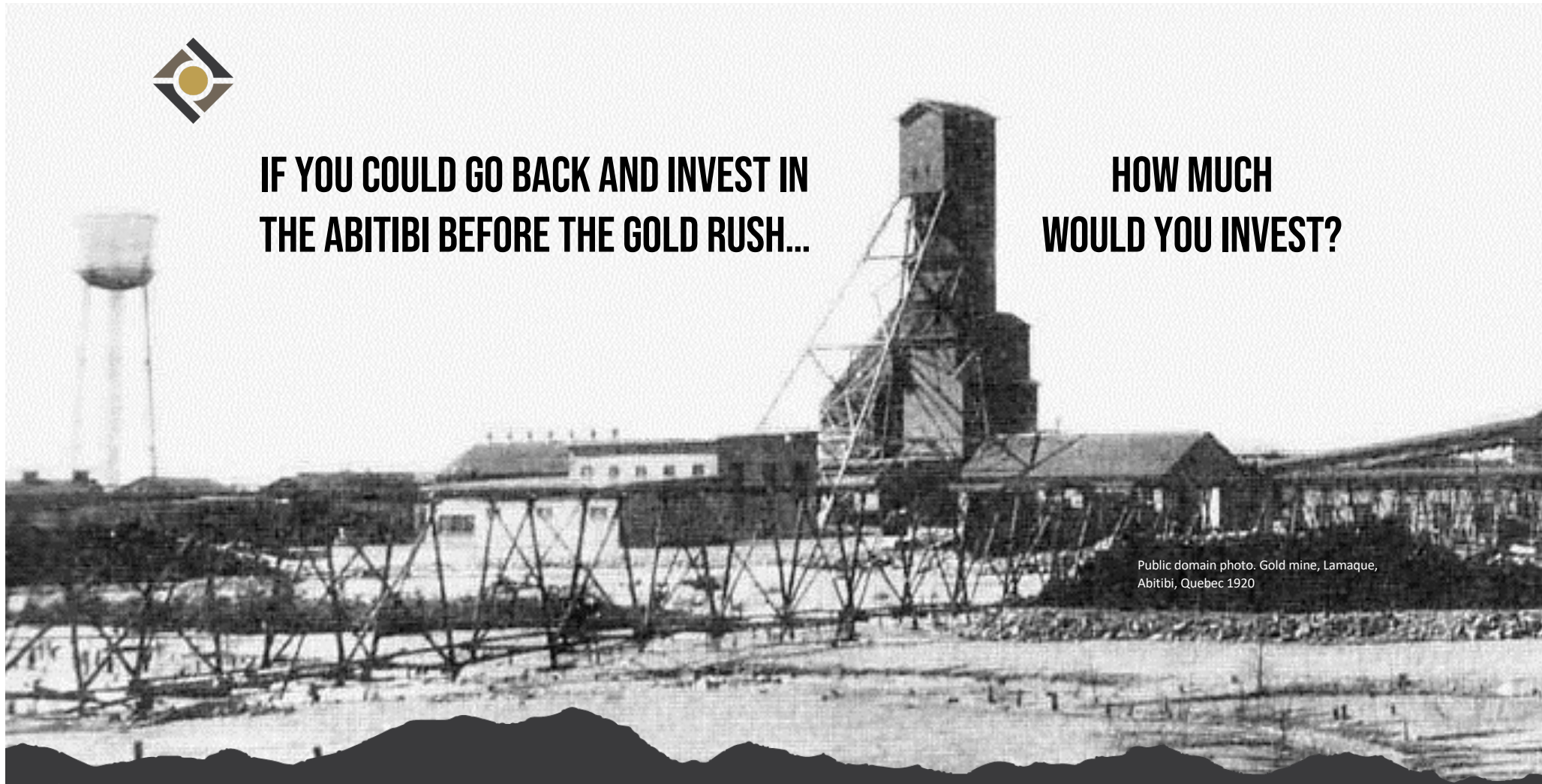
Proven execution team
and a unique toolkit for
turnkey exploration
support with Big Rock





**IF YOU COULD GO BACK AND INVEST IN
THE ABITIBI BEFORE THE GOLD RUSH...**

**HOW MUCH
WOULD YOU INVEST?**



Public domain photo. Gold mine, Lamaque,
Abitibi, Quebec 1920





JOIN US FOR THE
NEXT BIG DISCOVERY

WWW.RELEVANTGOLDCORP.COM

@RELEVANTGOLDCORP

 YouTube   

FOR QUESTIONS & INFORMATION, PLEASE CONTACT:

investorrelations@relevantgoldcorp.com
+1-763-760-4886

RELEVANT GOLD

TSXV:RGC | OTCQB:RGCCF