



NOVEMBER 12, 2024

2024 Precious Metals Summit

Zurich, Switzerland

Rick Greenwood
VP Exploration

aumegametals.com

ASX: AAM | TSXV: AUM | OTCQB: AUMMF



Disclaimer and Forward Looking Statements



Disclaimer and Forward-Looking Statements

This presentation is not a prospectus nor an offer to sell, nor a solicitation of an offer to buy, securities for subscription or sale in any jurisdiction nor a securities recommendation. The information in this presentation is an overview and does not contain all information necessary for investment decisions. In making investment decisions, investors should rely on their own examination of AuMEGA Metals Limited (AuMEGA or the Company) and consult with their own legal, tax, business and/or financial advisers in connection with any acquisition of securities or interest in the Company. The information contained in this presentation has been prepared in good faith by the Company. However, no representation or warranty, express or implied, is made as to the completeness or adequacy of any statements, estimates, opinions or other information contained in this presentation. To the maximum extent permitted by law, the Company, its directors, officers, employees and agents disclaim all liability for any loss or damage which may be suffered by any person through the use of, or reliance on, anything contained in or omitted from this presentation.

Certain information in this presentation refers to the intentions of the Company, but these are not intended to be forecasts, forward looking statements, or statements about future matters for the purposes of the Corporations Act 2001 (Cth) or any other applicable law. Some statements contained in this presentation are "forward looking information" within the meaning of Canadian securities laws. Forward looking information include but are not limited to, statements and information regarding: drilling plans and the timing thereof; the ability of the Company to identify new exploration targets and rank and prioritize them; the prospectivity of the Company's deposits, the ability of the Company to maximize return on investment and generate long-term value; the potential for major discoveries; the ability to identify RC drill targets; and the impact of geological mapping on identifying drill targets and understanding geology. Generally, forward-looking information can be identified by the use of forward-looking terminology such as "plans", "expects", "upside potential", "is expected", "budget", "scheduled", "estimates", "forecasts", "intends", "anticipates", "believes" or variations of such words and phrases (including negative or grammatical variations) or statements that certain actions, events or results "may", "could", "would", "might" or "will be taken", "occur" or "be achieved" or the negative connotation thereof. Readers are cautioned that forward-looking statements and information are inherently uncertain and involve risks, assumptions and uncertainties that could cause actual facts to differ materially. Forward-looking information is subject to known and unknown risks, uncertainties and other important factors that may cause the actual results, performance or achievements to be materially different from those expressed or implied by such forward-looking information, including but not limited to: risks related to mining operations, including economic and political instability in foreign jurisdictions; risks related to current global financial conditions and other conditions (including acts of war, terrorism, armed hostilities, and pandemic); risks related to mining operations; actual results of current exploration activities; environmental risks; future prices of gold; possible variations in estimates of mineral resources, grade or recovery rates; mine exploration, development and operating risks; accidents, labour disputes and other risks of the mining industry; and delays in obtaining governmental approvals or financing. The foregoing and other important factors could cause actual results to differ materially from those contained in forward-looking information and statements. There can be no assurance that future developments will be those set forth in this presentation. The Company expressly disclaims, and does not undertake, any obligation to update any estimate at any particular time or in response to any particular event. The occurrence of events in the future are subject to risks, uncertainties and other factors that may alter the Company's actual results, performance or achievements to differ from those referred to in this presentation to occur as contemplated. The presentation contains only a synopsis of more detailed information available in relation to the matters described in this document and accordingly no reliance may be placed for any purpose whatsoever on the sufficiency or completeness of such information and to do so could potentially expose you to a significant risk of losing any of the property invested by you or incurring by you of additional liability. Recipients of this presentation should conduct their own investigation, evaluation and analysis of the business, data and property described in this presentation. In particular, any estimates or projections or opinions contained herein necessarily involve significant elements of subjective judgment, analysis and assumptions and you should satisfy yourself in relation to such matters.

Technical Report – TSXV - NI 43-101

Additional scientific and technical information regarding the Company's mineral project is contained in the technical report titled "Technical Report on the Cape Ray Gold Project, Newfoundland, Canada" dated May 28, 2024 (with an effective date of May 26, 2024), prepared by Trevor Rabb (P. Geo.) and Ronald Voordouw, (P. Geo) of Equity Exploration Consultants Ltd., and Andrew Kelly (P. Eng.) of Blue Coast Research.

Mineral Resource Estimates Reporting – ASX Listing Rule 5.23

The information in this Presentation that relates to the Mineral Resource estimate for the Cape Ray Gold Project was announced on ASX on 30 May 2023. AuMEGA confirms that it is not aware of any new information or data that materially affects the information included in the announcement of 30 May 2023 and that all material assumptions and technical parameters underpinning the Mineral Resource estimate in that announcement continue to apply and have not materially changed.

Mineral Resources are reported using a cut-off grade of 0.30 g/t gold for open pit and 2.00 g/t gold for underground. Assumptions for the open pit and underground grade cut-offs consider the following: a gold price of USD 1750 per troy ounce gold, selling costs of USD 5 per troy ounce gold, exchange rate of 1.3 USD:CAD, open pit mining costs of CAD 3 per tonne, underground mining costs of CAD 92.47 per tonne, processing costs of CAD 20 per tonne, G&A costs of CAD 5 per tonne processed, gold recovery of 96%, and royalty of 3% for Zone 4, 41 and Isle aux Morts and royalty of 1% for Window Glass Hill, Angus, FW Zone and Zone 51. The open pit Mineral Resources are constrained using optimized pit shells that have been generated using Lerchs Grossman algorithm with parameters outlined above, using a maximum of 50 degree pit slopes. The underground Mineral Resources are constrained using a 2.00 g/t gold grade shell below the optimized pit based on the assumptions summarised above.

The Mineral Resource Estimate for the Cape Ray Gold Project has been prepared by Trevor Rabb, P.Geo. (EGBC #39599 and PEGNL #11155) who is a Competent Person as defined by JORC 2012. EGBC (formerly APEGBC) and PEGNL (APEGNL) are Recognised Professional Organisations accepted for the purpose of reporting in accordance with appendix 5A of the Australian Securities Exchange Listing Rules. Mineral Resources for the Cape Ray Gold Project have an effective date of 22 February 2023.

Exploration Results Reporting – ASX Listing Rule 5.23

The information in this Presentation that relates to exploration results reported through Company ASX announcements that can be found on the Company's website: www.aumegametals.com.

Data in this presentation have been previously disclosed by the Company and referenced in previous JORC Table 1 releases. Please see announcements dated: Mineral Resource estimate announced on 30 May 2023, Company 2024 exploration announcements on 28 August 2019, 31 October 2019, 29 October 2020, 16 January 2024, 23 May 2024 and 31 July 2024, Malachite announcements dated 20 August 2024, 20 April 2022, 8 June 2022, 12 September 2022, 14 September 2022, 6 October 2022, 12 December 2022, 25 January 2023 and 11 October 2023, Long Range announcements on 14 April 2021, 31 October 2019, 23 February 2023 and 24 August 2023, Bunker Hill announcements on 14 April 2021, 22 March 2023 and 6 April 2023, Hermitage prospecting results announced on 18 May 2023 and 13 November 2023, Grandy's announcements on 29 October 2020, 17 February 2021, 18 November 2021, 11 October 2023, Intersection related announcements 16 January 2024 and 29 October 2020, Hermitage announcement on 5 September 2024, 18 March 2024, Winter RC drill results reported on 23 April 2024 and 28 May 2024 and the Resource Corridor announcement on 5 June 2024. Targeting workshop news release dated 4 July 2024.

AuMEGA confirms that it is not aware of any new information or data that materially affects the information included in those announcements.

AuMEGA Value Proposition



Fully funded for the Company's largest ever exploration program in 2025



DISTRICT SCALE LAND PACKAGE
On a proven multi-million-ounce gold structure



"BLUE-CHIP" SHAREHOLDER REGISTER
Led by B2Gold as a strategic investor



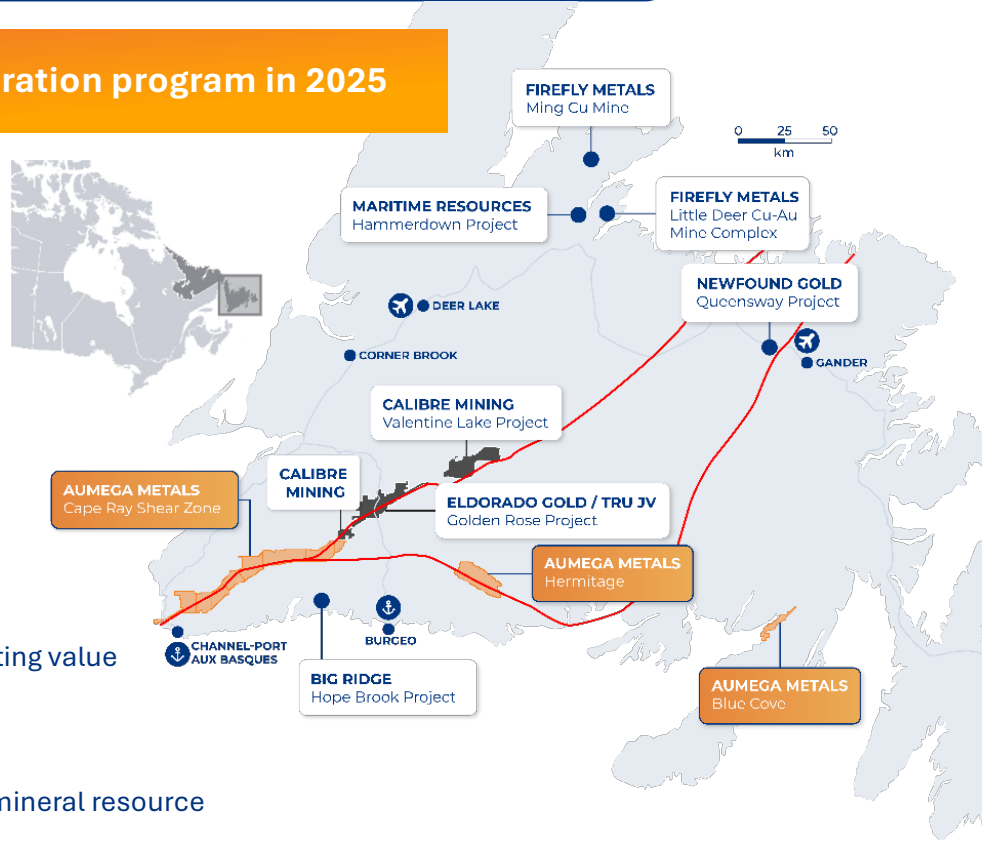
WORLD-CLASS EXPLORATION
To maximise return on investment, create long-term value



TOP-NOTCH BOARD & MANAGEMENT
With a proven track record of making major discoveries, creating value



HIGH-GRADE, SHALLOW MINERAL RESOURCE
One of only a few explorers in Newfoundland with a defined mineral resource



Upsized Private Placement Financing



Significant demand for new and existing shareholders for gross proceeds C\$16.1 million

Gross Values (Before Costs)	Pricing (per share)	Tranche 1 (closed)	Tranche 2 (subject to shareholder approval)	TOTAL
Premium Flow Through	C\$0.068 / A\$0.074	C\$8.31 million	C\$1.95 million	C\$10.3 million
Traditional Flow Through	C\$0.060 / A\$0.065	-	C\$2.06 million	C\$2.06 million
Hard Dollars	C\$0.050 / A\$0.054	C\$0.46 million	C\$3.34 million	C\$3.80 million
TOTAL	C\$0.062 / A\$0.067	C\$8.77 million	C\$7.34 million	C\$16.1 million

SHARE PLACEMENT

TSXV
71%

ASX
29%

INVESTOR GEOGRAPHIC COMPOSITION

North America
72%

Europe
11%

Australia
10%

Asia
7%

INVESTOR COMPOSITION

Existing
42%

New
58%

Non-Retail
81%

Retail
19%

District Scale Land Package



Several discrete projects of scale along both prospective gold structures in Newfoundland



DISTRICT SCALE LAND PACKAGE
On a proven multi-million-ounce gold structure



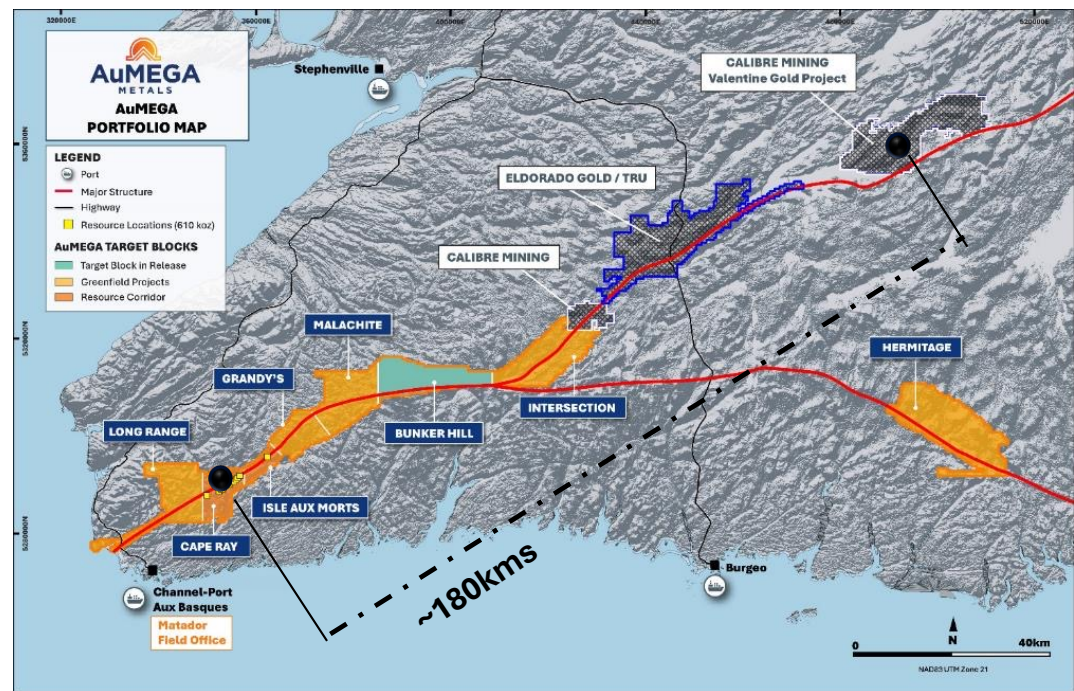
SIGNIFICANT POTENTIAL FOR MAJOR DISCOVERIES
Multiple opportunities to unlock value



LIMITED EXPLORATION TO-DATE
Lack of exploration presents unique opportunities



THE RIGHT GEOLOGIC SETTING, PATHFINDERS
The right rocks on the right structures to host large deposits



Comprehensive 2024 Exploration Program



COMPLETED INAUGURAL BOH RC DRILL PROGRAM

Three large mineralised zones identified

Malachite

DIAMOND DRILLING IN SPRING/SUMMER

3,000 metres drilling; phase two assays pending

Malachite

Cape Ray

GEPHYSICS & GEOCHEMISTRY

High-resolution airborne magnetics, Electro-magnetics
Till/soil sampling

Hermitage

Intersection

Bunker Hill

GEOLOGICAL MAPPING, MODELLING & PROSPECTING

Low-cost, high value target/project generation

Hermitage

Cape Ray

Blue Cove



Bunker Hill



Expansive area with limited historic exploration work with indicators of intrusive mineralisation

Recent High-Grade Outcrop Results (1)

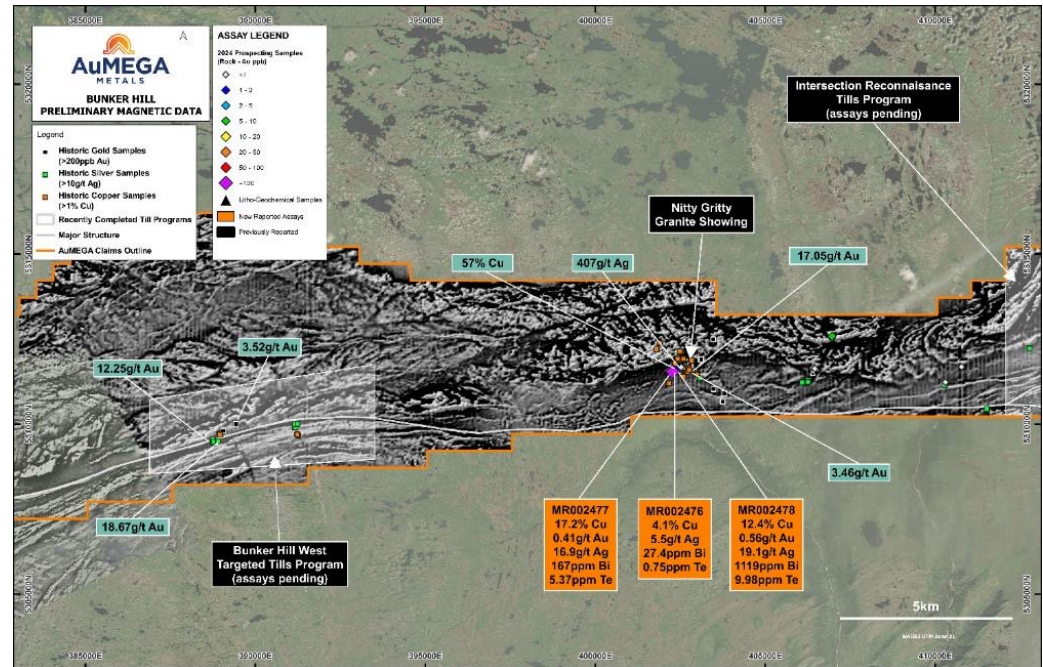
- Copper: 17.2%, 12.4% & 4.1%
- Silver: 19.1 g/t, 16.9 g/t
- Significant fluorite, iron oxides, tellurium & bismuth

Significant Historical Samples at Bunker Hill(2)

- Gold: 18.7 g/t, 17.1 g/t
- Silver: 407.5 g/t, 35.3 g/t
- Copper: up to 57%

High-Resolution Airborne Magnetic Survey(3)

- Covering Bunker Hill Project, which currently has no magnetics

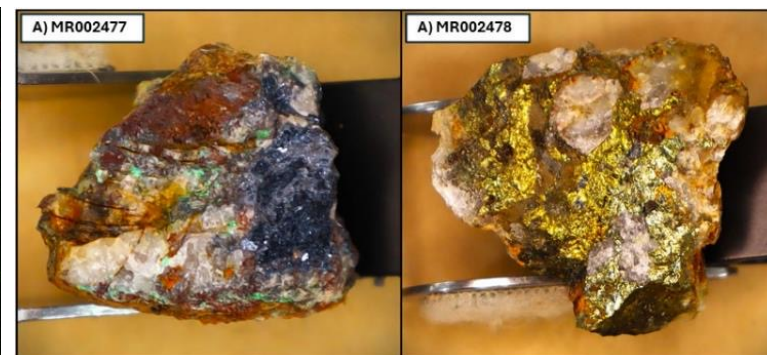
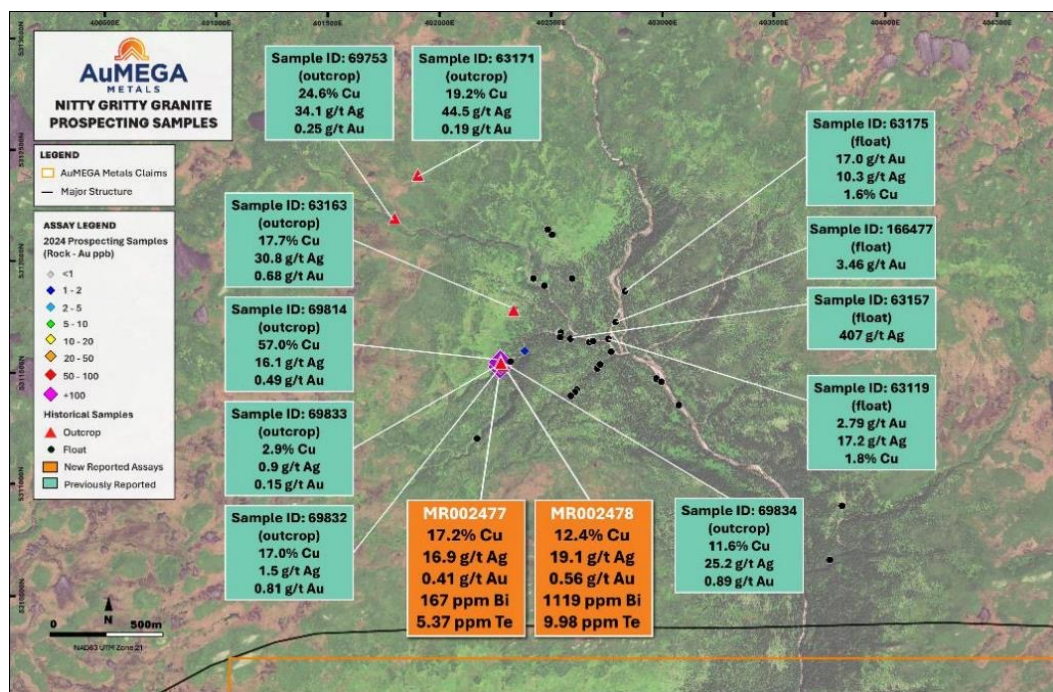


1. ASX Announcement 24 September 2024
 2. ASX Announcements 6 April 2023, 22 March 2023 and 14 April 2021
 3. ASX Announcement 15 October 2024

Bunker Hill Higher Grade Copper Samples



Two major intrusive structures identified across this large, vastly underexplored property



Nitty Gritty Granite

- Displays several features characteristic of potential porphyry mineralisation
- Nearly one kilometre of strike identified
- Significant pathfinders including chalcocite-malachite, chalcopyrite-bornite, iron oxides, fluorite, etc.

Intersection Till Results⁽¹⁾

Intersection is the site of the convergence of two major gold structures

Target Area 1

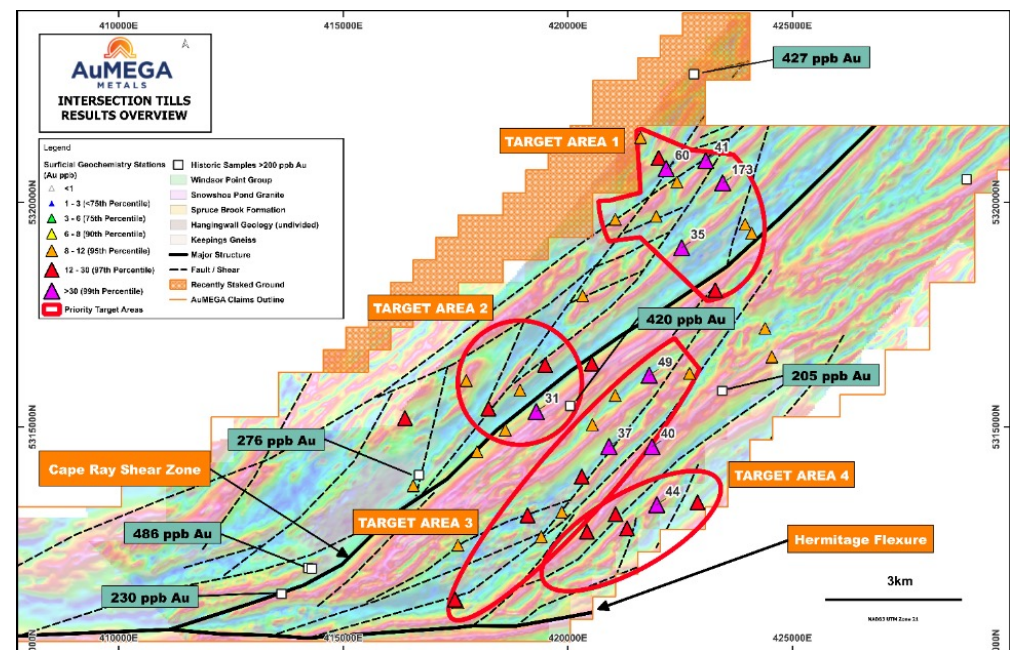
- Elevated gold situated adjacent to several major second and third order structures
- Geologically complex with two-kilometres of strike

Target Area 2

- Similar structural position to Target Area 1
- Cluster of gold-in-till anomalism off several CRSZ splays

Target Areas 3 and 4

- Several second and third order structures over seven kilometres of strike by four kilometres wide
- Gold-in-till anomalism splaying of Hermitage Flexure



1. ASX Announcements 16 January 2024 and 29 October 2020

Valentine Project Comparison



Valentine deposits presenting similar attributes to that of Bunker Hill and Intersection

Structural Setting

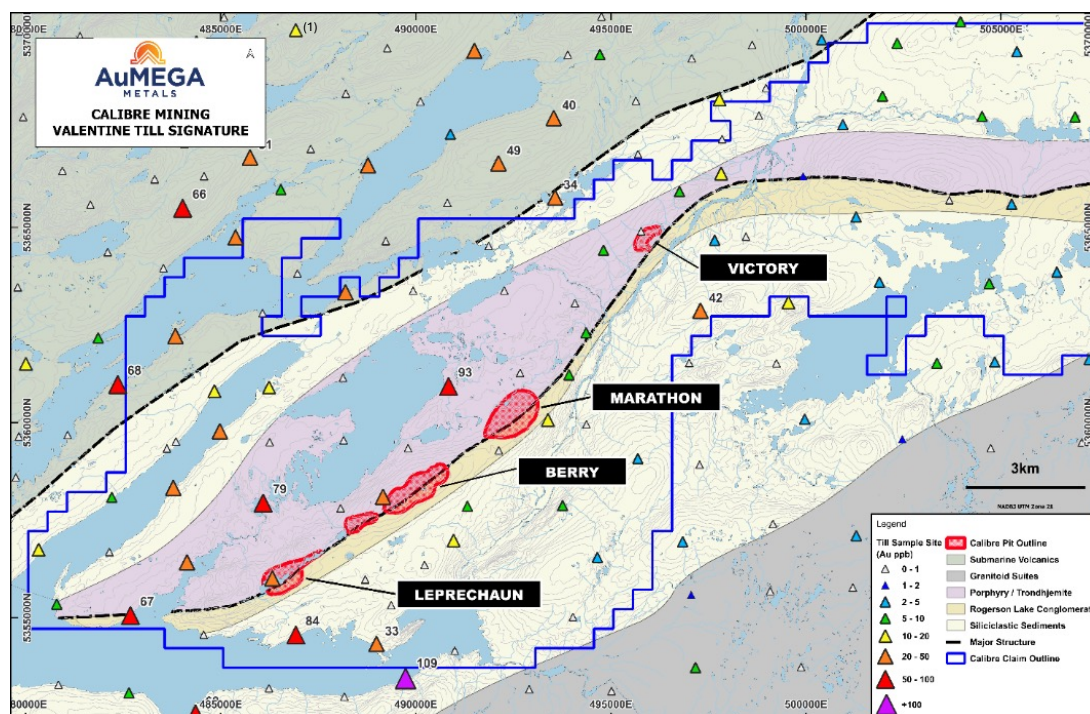
- Structural setting of Valentine deposits provides insights for Bunker Hill and Intersection and other targets along the CRSZ
- Structural setting appears similar to that of Bunker Hill and Intersection

Till Results

- Historic Valentine till results are similar in amplitude and scale to the recently announced Intersection till results
- The till samples act as a vector for future drill targets

Valentine Growth

- Exponential increase in the resource when new areas were explored and capital availability increased



1. Image Source: Calibre Mining & NL Government

Phase One Diamond Drilling Yielded Positive Results



INDICATED MINERAL RESOURCES⁽¹⁾
6.2 Mt @ 2.25 g/t for 450 koz Au

INFERRED MINERAL RESOURCES⁽¹⁾
3.5 Mt @ 1.4 g/t for 160 koz Au

2024 Diamond Drilling Completed

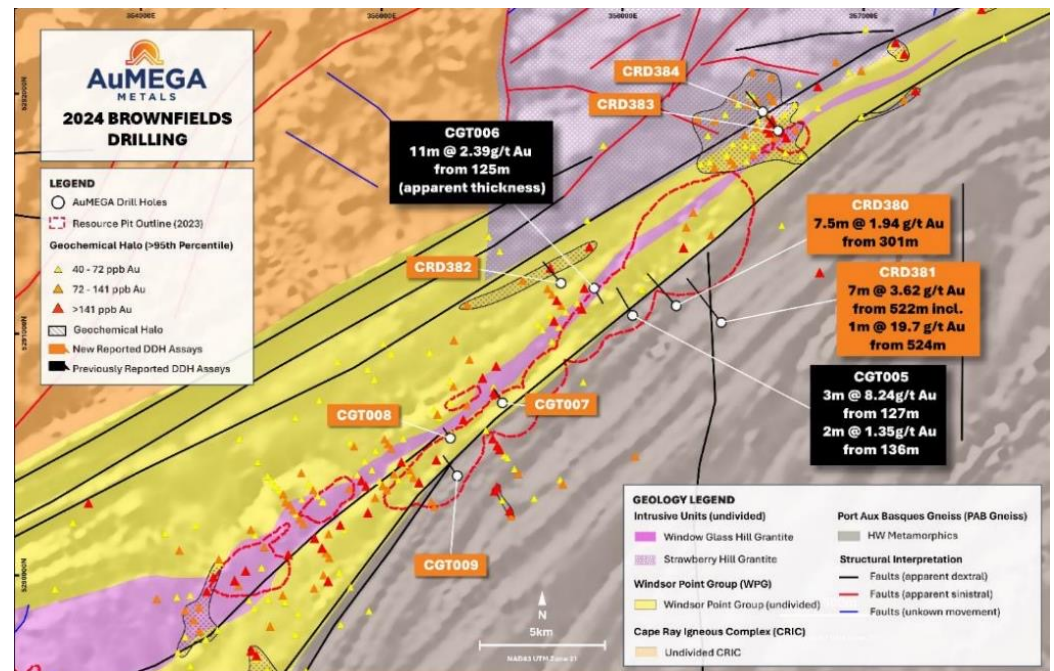
- Approximately 1,900 metres drilling
- Deepest ever hole drilled at Central Zone (614m)

Mineralisation Extended at Central Zone

- Drilling intersected gold mineralisation down plunge of the 04 and 41 zones

Significant Intersections⁽²⁾

- Zone 04: 3.62 g/t Au over 7 metres including 19.7 g/t over one metre
- Zone 41: 1.94 g/t Au over 7.5 metres and 5.74 g/t over one metre



1. ASX announcement dated 30 May 2023
2. ASX announcement dated 11 September 2024

Hermitage Project



Largest arsenic & antimony anomaly in Newfoundland – with confirmed association with gold

Significant Gold Belt

- Structural hosts other major gold discoveries including NewFound Gold's Queensway Project

Geologically Akin to Major Global Gold Deposits

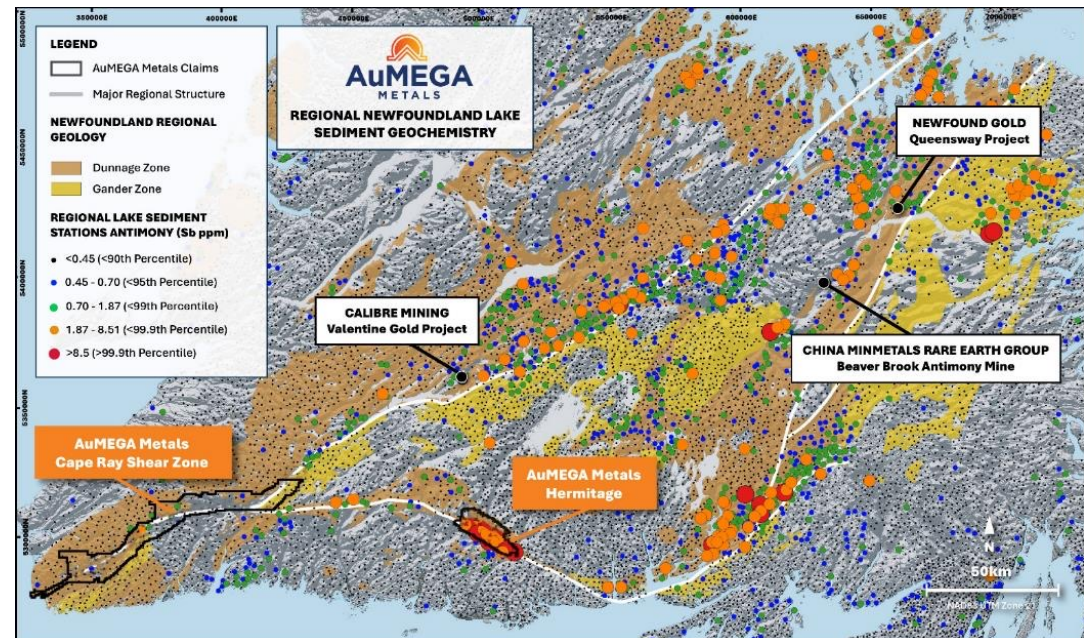
- Similar age of mineralisation, geology and pathfinder elements to Bendigo, Fosterville

Large Land Position

- Over 270 square kilometres on vastly underexplored, remote area

Unique Geologic Setting

- Orientation completely different to all other major geological structures in Newfoundland

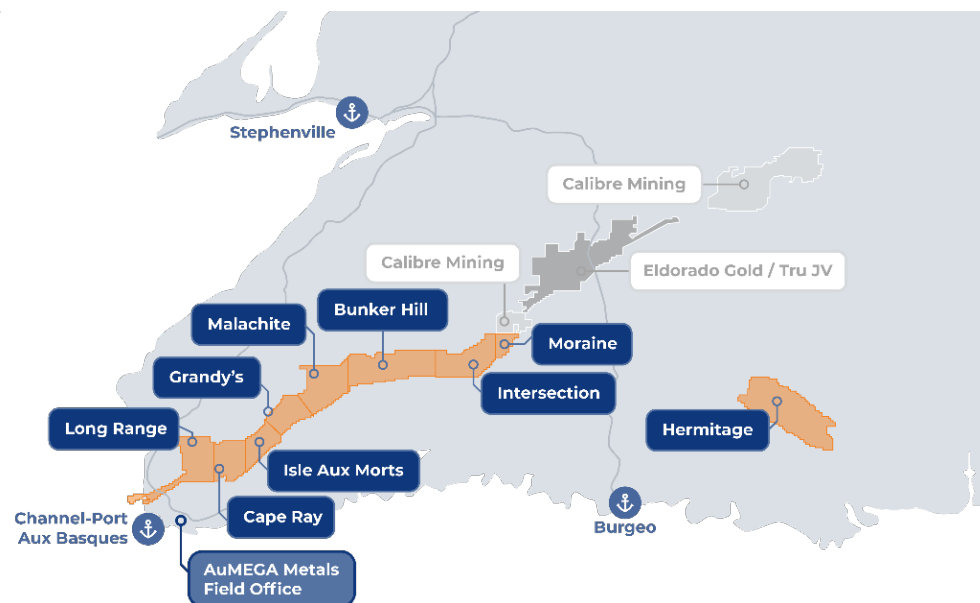


The AuMEGA Differentiator



Well positioned to make the next MEGA gold discovery in Newfoundland

Exploration Program	✓	Systematic approach to exploration
Land package	✓	District-scale along major structures
Board & Management	✓	Highly commercial and technical
Shareholder register	✓	Global, institutional
Strategic Owner	✓	B2Gold – 10% owner



AuMEGA Metals Limited

24 Hasler Road, Osborne Park
WA 6017 Australia
Ph: +61 8 6117 0478 (Australia)
Ph: +1 780 665 4925 (Canada)
E: info@aumegametals.com



www.aumegametals.com



[@aumegametals](https://twitter.com/aumegametals)



<https://au.linkedin.com/company/aumega-metals>

ASX: AAM | TSXV: AUM | OTCQB: AUMMF

