

# Barton Gold

ASX:BGD FRA:BGD3 OTCQB:BGDFF

South Australia's  
**1.6 Moz Au Growth Platform**

12 November 2024 | Zurich Precious Metals Summit

*Perseverance Mine, Tarcoola Project*



# Important Notices

---

## **Disclaimer**

This document has been approved by the Board of Barton Gold Holdings Limited (ACN 633 442 618) (together with its affiliates, "Barton" or the "Company") and has been prepared for the exclusive use of the party to whom Barton delivers this document (the "Recipient"). The information contained in this document has been prepared in good faith by Barton. However, no representation or warranty, either express or implied, is made as to the accuracy, completeness, adequacy or reliability of the information contained in this document. This document contains only a synopsis of more detailed information in relation to the matters described herein and accordingly no reliance may be placed for any purpose whatsoever on the sufficiency or completeness of such information as presented herein. This document should not be regarded by the Recipient as a substitute for the exercise of its own judgment and the Recipient should conduct its own due diligence in respect of the contents of this document. To the maximum extent permitted by law Barton, its directors, officers, employees, advisers, agents and related bodies corporate ("Barton Gold Group") disclaim any or all liability for any loss or damage which may be suffered by any person as a result of the use of, or reliance upon, anything contained within or omitted from this document (regardless of whether the loss or damage arises in connection with any negligence, default, lack of care or misrepresentation by the Barton Gold Group or any other cause in connection with the provision of this document or the purported reliance on this document or the information contained in it). To the extent that any provisions in this Important Notices section may be construed as being a contravention of any law of the State or the Commonwealth, such provisions should be read down, severed or both as the case may require and the remaining provisions shall continue to have full force and effect.

This document has been prepared solely for informational purposes. This document does not constitute a prospectus and is not to be construed as a solicitation or an offer to buy or sell any securities, or related financial instruments, in any jurisdiction. The Recipient should not construe the contents of this document as legal, tax, accounting or investment advice or a recommendation. This document does not purport to contain all of the information a Recipient would require to make an informed decision whether to invest in the Company. Specifically, this document does not purport to contain all the information that investors and their professional advisers would reasonably require to make an informed assessment of the Company's assets and liabilities, financial position and performance, profits, losses and prospects. The Recipient must not rely on the information set out in this document and must make its own independent assessment and consult its own legal counsel, tax and financial advisors concerning any matter described herein. This document does not purport to be all-inclusive or to contain all of the information that the Recipient may require. No investment, divestment or other financial decisions or actions should be based solely on the information in this document. The distribution of this document may be restricted by law in certain jurisdictions.

This document must be treated as strictly confidential and must not be copied, reproduced, distributed, quoted, referred to or distributed to others at any time, in whole or in part, without the prior written consent of Barton.

## **Cautionary Statement Regarding Forward-Looking Information**

The figures, valuations, forecasts, estimates, opinions and projections contained herein involve elements of subjective judgment and analysis and assumption. Barton does not accept any liability in relation to any such matters, or to inform the Recipient of any matter arising or coming to the company's notice after the date of this document which may affect any matter referred to herein. Any opinions expressed in this material are subject to change without notice, including as a result of using different assumptions and criteria. This document may contain forward-looking statements. Forward-looking statements are often, but not always, identified by the use of words such as "seek", "anticipate", "believe", "plan", "expect", "target" and "intend" and statements that an event or result "may", "will", "should", "would", "could", or "might" occur or be achieved and other similar expressions. Forward-looking information is subject to business, legal and economic risks and uncertainties and other factors that could cause actual results to differ materially from those contained in forward-looking statements. Such factors include, among other things, risks relating to property interests, the global economic climate, commodity prices, sovereign and legal risks, and environmental risks. Forward-looking statements are based upon estimates and opinions at the date the statements are made. Barton undertakes no obligation to update these forward-looking statements for events or circumstances that occur subsequent to such dates or to update or keep current any of the information contained herein. Any estimates or projections as to events that may occur in the future (including projections of revenue, expense, net income and performance) are based upon the best judgment of Barton from information available as of the date of this document. There is no guarantee that any of these estimates or projections will be achieved. Actual results will vary from the projections and such variations may be material. Nothing contained herein is, or shall be relied upon as, a promise or representation as to the past or future. Any reliance placed by the Recipient on this document, or on any forward-looking statement contained in or referred to in this document will be solely at the Recipient's own risk. The Barton Gold Group expressly disclaims any and all liability relating or resulting from the use of all or any part of this document or any of the information contained herein.

## **Date and Currency**

This document is dated 12 November 2024 ("Preparation Date") and is based on the Company's prospectus dated 14 May 2021 ("Prospectus") for an offer to acquire fully paid ordinary shares ("Shares") in the capital of the Company ("Offer"), updated for the results of the Offer, and Barton ASX announcements as from the date of the Prospectus. A copy of the Prospectus is available for download at [www.bartongold.com.au](http://www.bartongold.com.au) or [www.asx.com.au](http://www.asx.com.au). The delivery of this document at any time after the Preparation Date does not imply the information contained in it is correct at any time after the Preparation Date. Delivery of this document does not imply, and is not to be relied upon as a representation or warranty that: (i) there has been no change since the Preparation Date in the business, operations, financial condition, prospects, creditworthiness, status or affairs of the Company or any of the Company's related bodies corporate or affiliates; or (ii) the information contained in this document remains correct and not misleading at any time after the Preparation Date. The information in this document should be considered dynamic and may change over time. Subject to its obligations at law, Barton has no responsibility or obligation to update this document or inform the recipient of any matter arising or coming to their notice after the Preparation Date which may affect any matter referred to in the document. All dollar values expressed in this document are Australian dollars (\$, A\$, or AUD).

# 1.6 Moz SA Developer

Strategic 'first mover' with existing infrastructure in a proven gold district



## Leading the re-emergence of South Australian gold

- South Australia: 25% of Australian gold / 2.5% of production <sup>(1)</sup>
- Central Gawler Craton: 130 year gold production history <sup>(2)</sup>
- ~5,000km<sup>2</sup> tenements (1.25m acres) & region's only gold mill



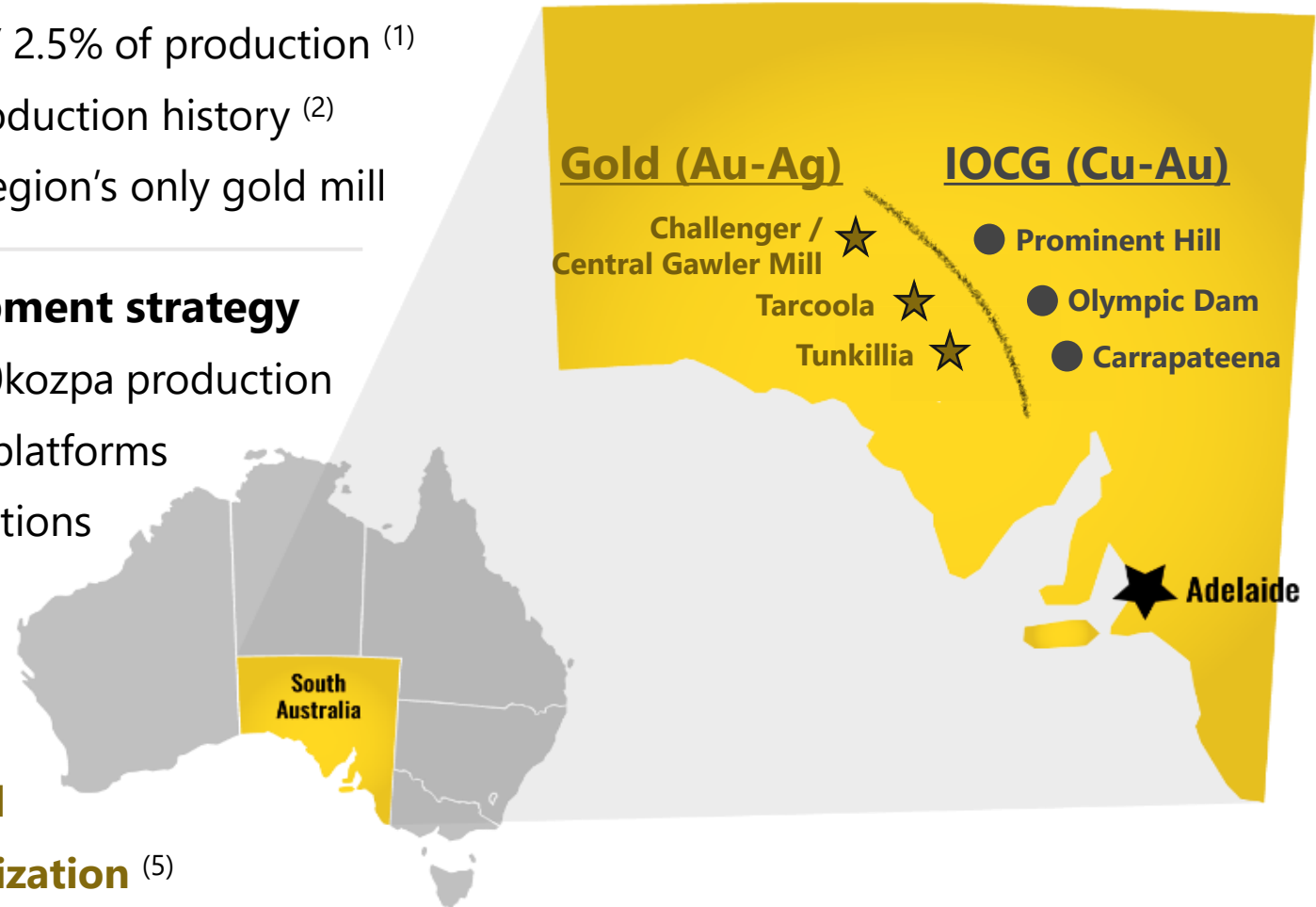
## Staged, lower-cost, lower-risk development strategy

- Targeting district scale discoveries & 150kozpa production
- Advancing dual near-term & long-term platforms
- Leverage existing mill for 'Stage 1' operations



## Rapidly advancing both platforms <sup>(3)</sup>

- **Tunkillia: ~130kozpa Scoping Study** <sup>(4)</sup>
- **Tarcoola/CGM: focus on 'Stage 1' feed**
- **A\$8.8m cash & record of asset monetization** <sup>(5)</sup>



1 Government of South Australia – Dept for Energy & Mining, Geoscience Australia

2 Refer to Prospectus

3 Refer to ASX announcements dated 26 Apr and 11 Dec 2023, and 4 Mar and 3 Jul 2024

4 Refer to Annexures and ASX announcements dated 4 March and 16 July 2024

5 Refer to ASX announcements dated 29 October 2024



# Capital Structure

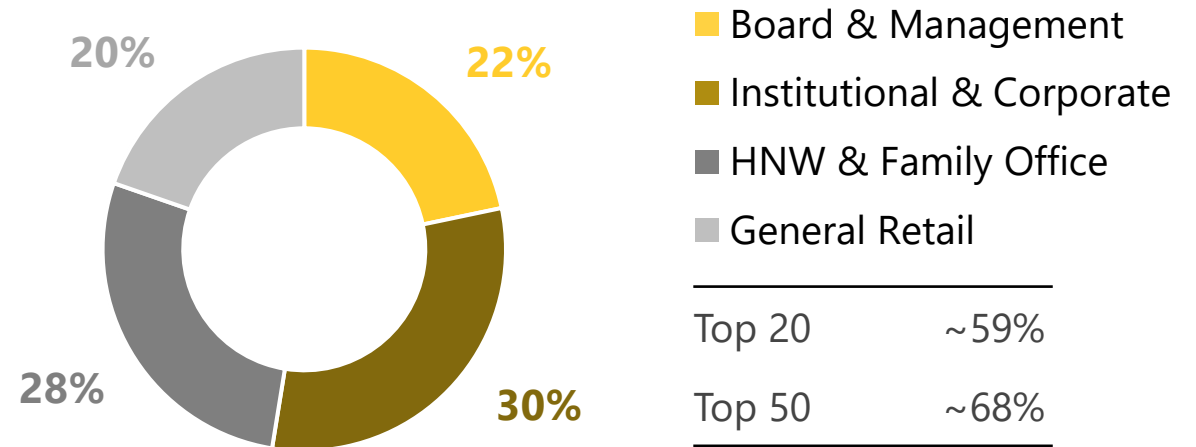
(\$AUD)

Shares on issue <sup>(1)</sup>	218.7 million
Market Cap (\$0.29 / share) <sup>(2)</sup>	\$62.3 million
<b>Cash</b> <sup>(3)</sup>	<b>\$8.8 million</b>
<b>Enterprise Value</b> <sup>(4)</sup>	<b>\$53.5 million</b>
Options on issue <sup>(1)</sup>	17.8 million
Debt	Nil



Register consolidating around strong management and track record of reliable, low-dilution progress

## Share Distribution <sup>(5)</sup>



1 Refer to ASX announcements dated 30 Oct 2024

2 As at ASX market close on Friday, 8 Nov 2024

3 As at 30 Sep 2024; Barton also has another \$4.5m restricted cash posted as security for rehabilitation bank guarantees

4 Market cap less cash and nil debt. Subject to rounding

5 Estimate based upon Company analysis as at 8 Nov 2024



# Experienced Leadership

Strong SA and gold pedigree

## Board of Directors



**Ken Williams | Non-Executive Chair**

- ~30 years in mining, aviation & financial services
- Former CFO Normandy Mining (Newmont Australia)



**Alexander Scanlon | Managing Director & CEO**

- ~20 years in principal investments & resources
- Founder of Barton Gold, former MD PARQ Capital



**Christian Paech | Non-Executive Director**

- ~30 years in private & public legal practice
- Former Santos Ltd General Counsel & CoSec



**Graham Arvidson | Non-Executive Director**

- ~20 years in mechanical engineering & CPMet
- Study, design & operation of multiple gold assets



**Shannon Coates | Company Secretary**

- ~25 years in legal & Company Secretarial roles
- Qualified lawyer & Chartered Secretary

## Senior Management



**Nicola Frazer | Chief Financial Officer**

- ~25 years in South Australian mining & oil / gas
- Former Normandy / Newmont & Beach Energy corporate



**Kim Russell | General Manager, Development**

- ~30 years development / operations of large-scale mines
- Former Rex Minerals, Harmony Gold & Pilbara Minerals



**David Wilson | General Manager, Projects**

- ~40 years in mining & project management
- Former Normandy Chief Surveyor & Technical Supervisor



**Marc Twining | General Manager, Exploration**

- ~25 years in resources exploration & development
- Former Normandy / Newmont exploration geologist



**Ian Garsed | Principal Geologist**

- ~30 years in gold / IOCG discovery & Resources definition
- Former MIM, Minotaur Exploration & South32 Sr Geologist



# The Big Picture

Ambition: Build ~150kozpa independent gold producer



## Staged, open pit growth strategy

- ✓ 1) Establish bulk open pit baseload
- ⚙️ 2) Add complementary high-grade
- ⚙️ 3) Leverage CGM to 'S1' operations



## S2: Tunkillia Project

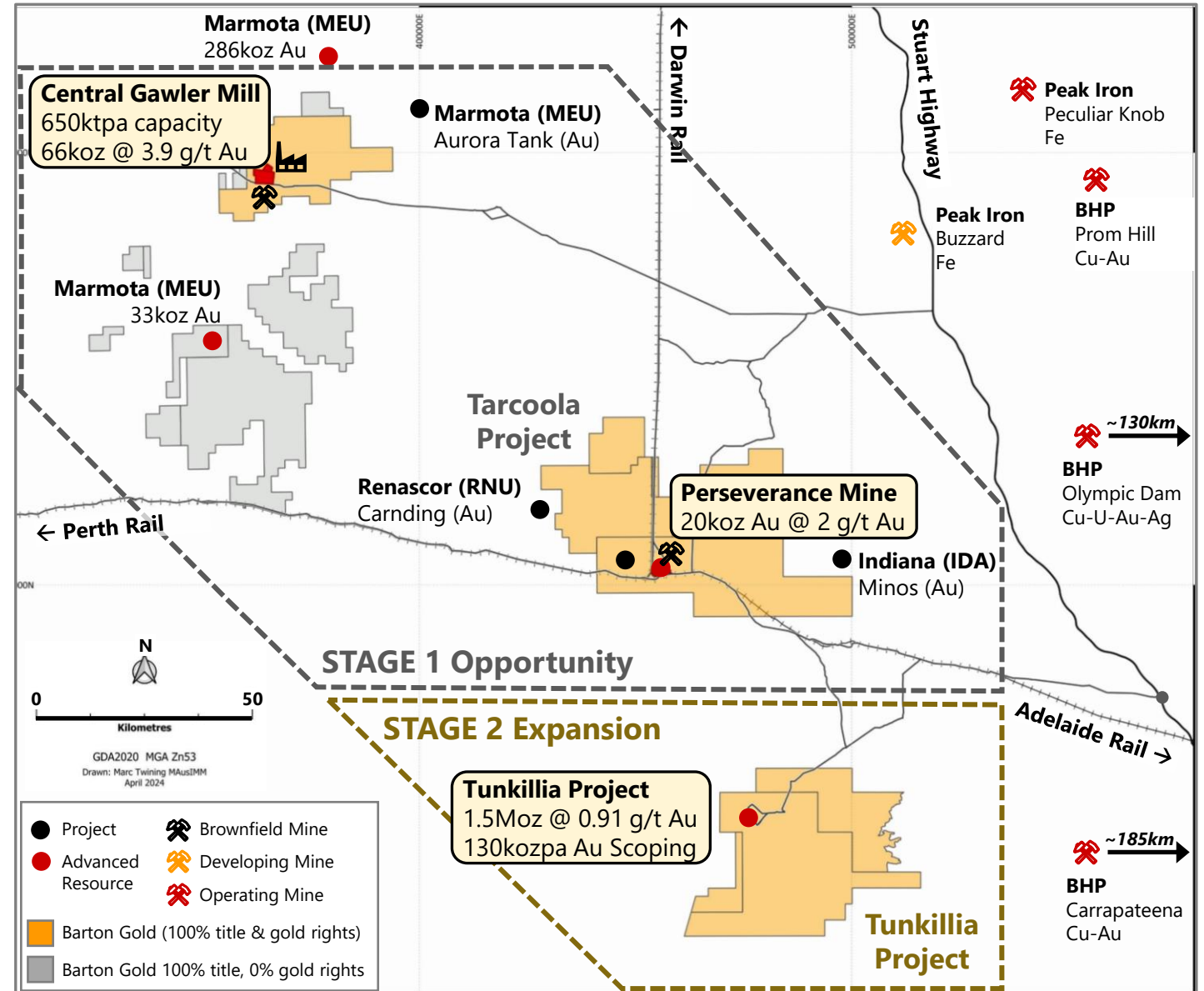
- Bulk open pit + new mill = anchor for long-term regional operations
- **New 130kozpa Scoping Study** <sup>(1)</sup>



## S1: Tarcoola / Challenger + Mill

- Fully permitted & proven met <sup>(2)</sup>
- **Minimal ozs required to start; reviewing potential feed from open pits, UG, stockpiles, TSFs**

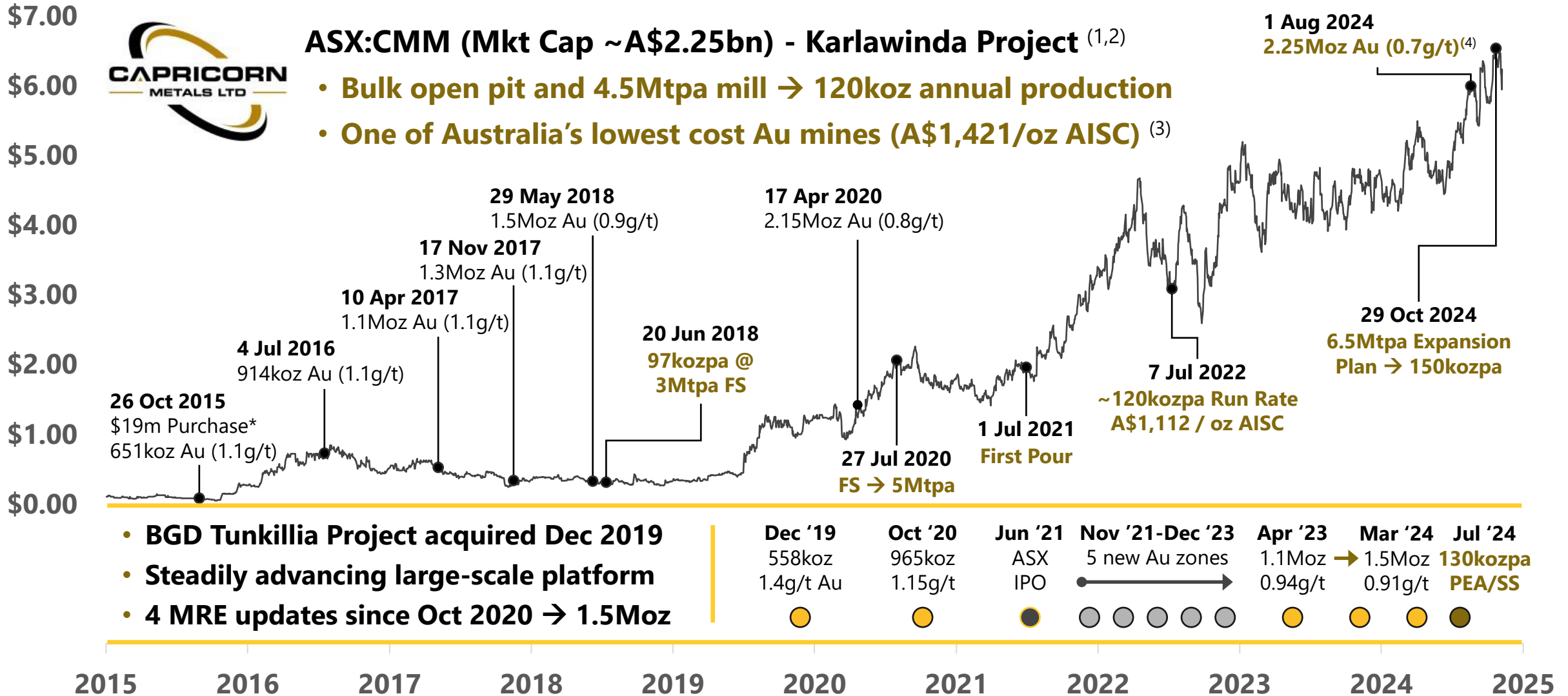
1 Refer to ASX announcement dated 16 July 2024  
 2 Refer to Prospectus





# Following the Leader

Volumetric capital and operating efficiencies are the path to lower costs and higher profits



\* Based upon CMM price of \$0.11 per share (as adjusted) on 26 Oct 2015; Market Cap as at 8 Nov 2024  
 1 Market data at 8 Nov 2024, for each event refer to BGD or CMM ASX Announcements of the same date;  
 2 All \$ figures are AUD; AISC = All In Sustaining Cost; figures subject to rounding

3 Refer to CMM announcement dated 1 Aug 2024, by reference to FY 2024 AISC performance  
 4 CMM 1 Aug 2024 MRE comprised of 1.97Moz Au in Indicated and 0.29Moz Au in Inferred categories

# Tunkillia Scale Platform



## Rapidly expanding ~1.5Moz gold footprint

- Gold endowment larger than previously recognised; most historical drilling 1996-2005 (<US\$400/oz Au) <sup>(1)</sup>
- **5 new zones + 4 MRE upgrades since Oct 2020;** <sup>(2)</sup>  
**efficient recent growth ~530koz @ A\$15/oz all in** <sup>(3)</sup>
- **Positive initial Scoping Study for ~130kozpa Au** <sup>(4)</sup>



## Significant Resources and study upside potential

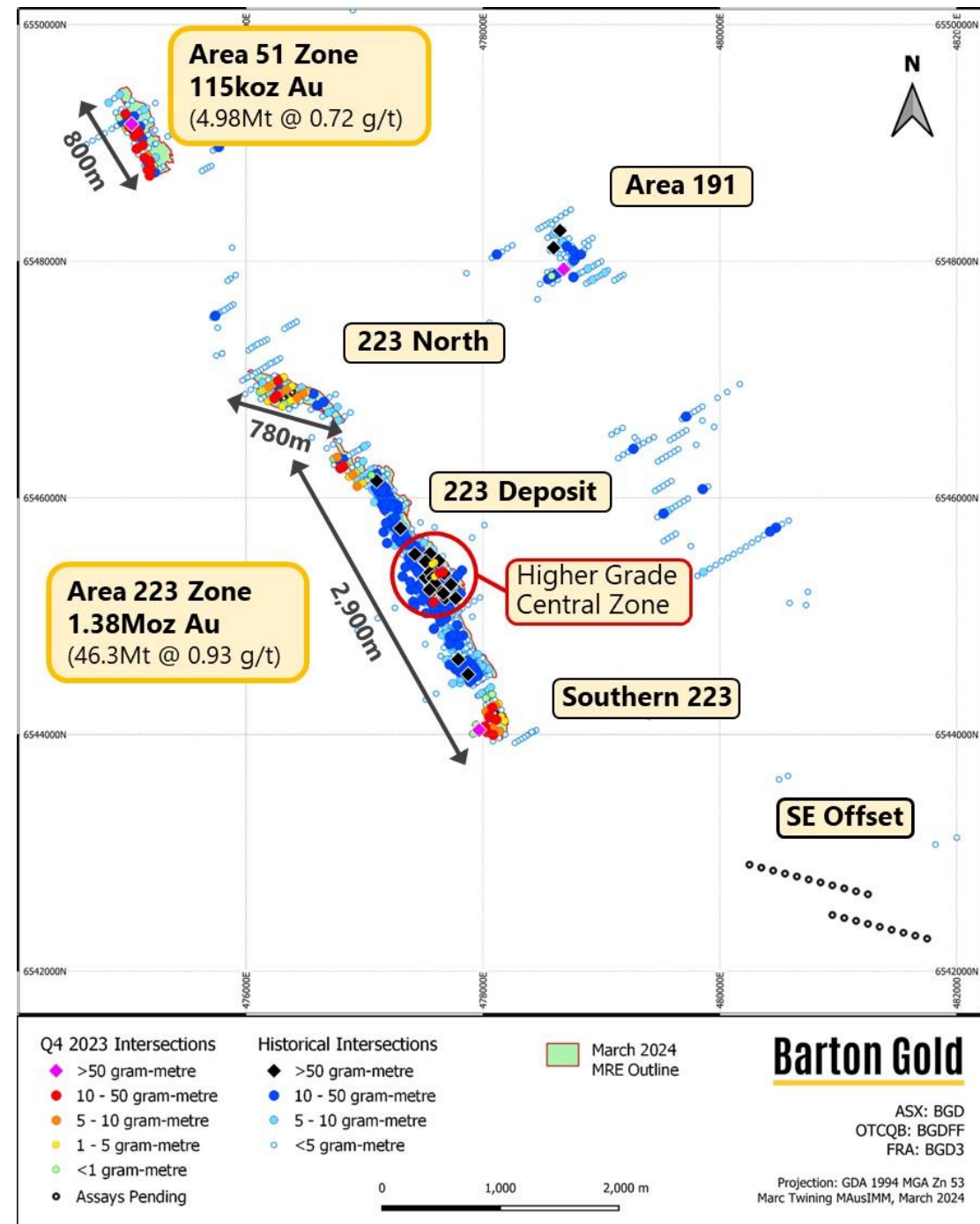
- Conservative Resource model → production mentality
- Conservative initial Study → establish robust baseline
- **Optimised Scoping Study underway for H1 2025;**  
**Planning environmental studies for ML application**
- **+20km untested shear along strike of 1.5Moz**

1 Company analysis of historical gold price and Tunkillia drilling data

2 Refer to Prospectus and ASX announcements dated 3 / 8 / 15 Nov 2021, 5 Sep 2022, 26 Apr, 15 / 21 Nov and 11 Dec 2023, & 4 Mar 2024

3 Refer to ASX announcements dated 26 Apr / 11 Dec 2023 and 4 March 2024

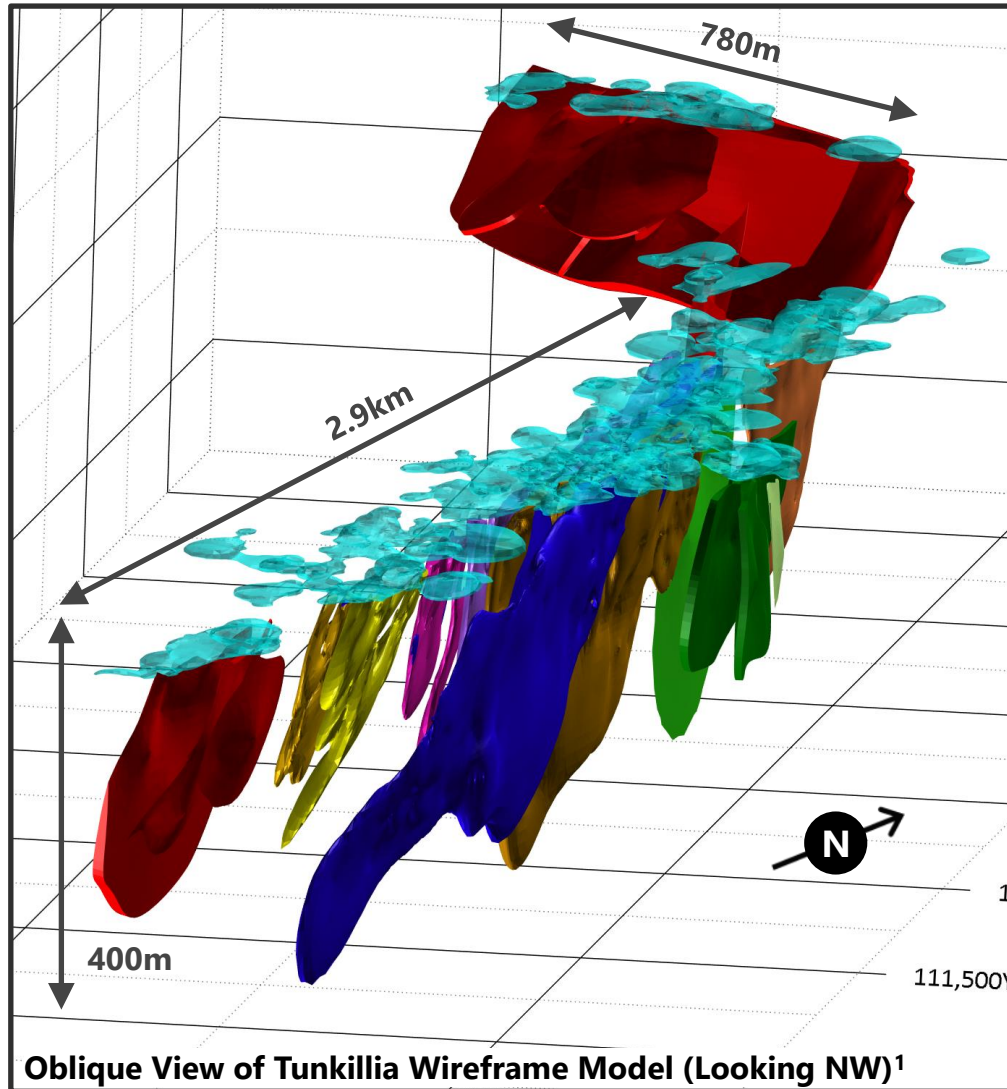
4 Refer to ASX announcement dated 16 July 2024



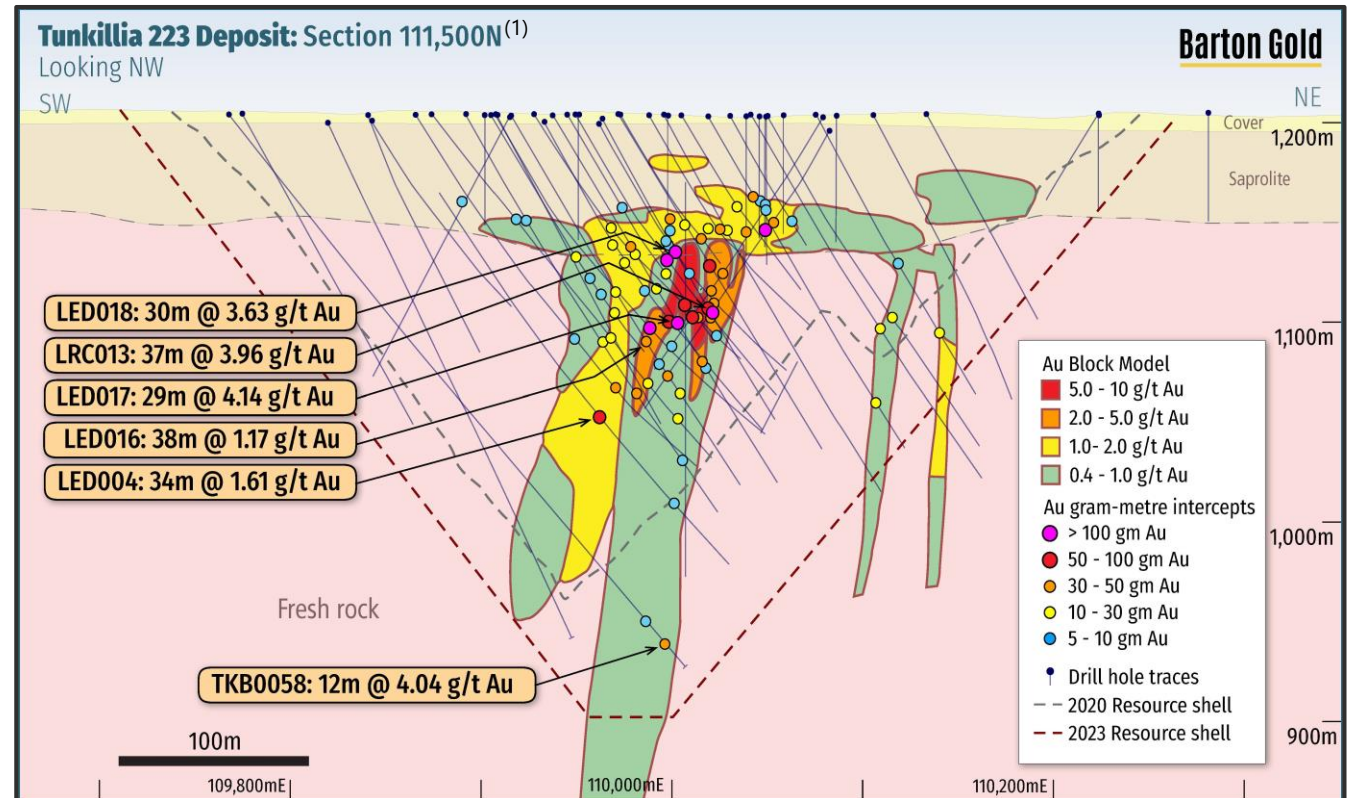


# Tunkillia Main Deposit

Attractive characteristics with higher-grade central core and shallow supergene zone



- ~80% of MRE tonnes & ounces within 200m of surface <sup>(1)</sup>
- ~**300m long higher-grade core = ideal 'starter pit'** <sup>(1)</sup>
- ~277koz Au in shallow (~35m deep) supergene blanket <sup>(1)</sup>

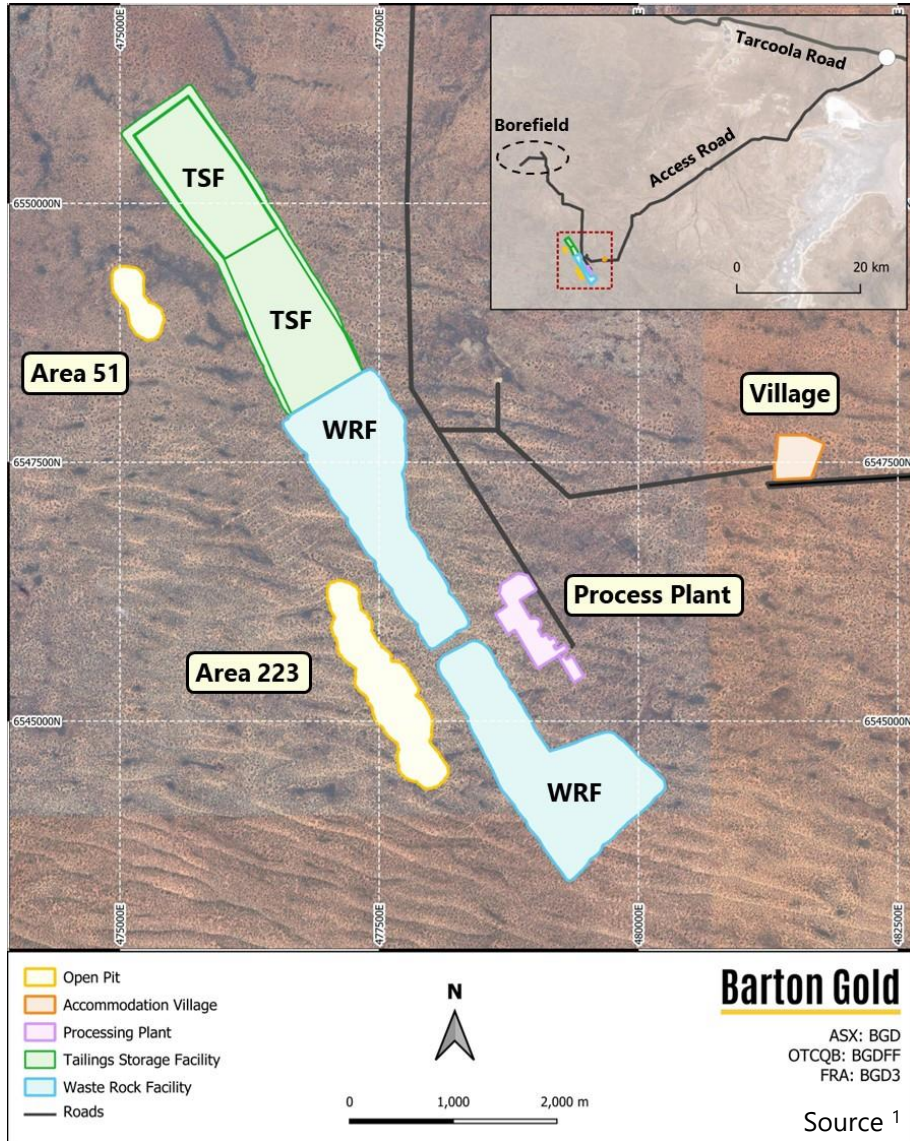


<sup>1</sup> Refer to ASX announcement dated 11 December 2023



# Tunkillia Initial Scoping Study

Validates scale strategy and highlights optimisation targets



## Key outcomes: (1)

<b>5 Mtpa</b> throughput	<b>6.4 years</b> mining	<b>130kozpa</b> payable Au	<b>311kozpa</b> payable Ag	<b>A\$1,917</b> AISC / oz Au
<b>A\$1.3 bn</b> LoM EBITDA	<b>A\$512m</b> NPV <sub>7.5%</sub>	<b>40% IRR</b> (unlevered)	<b>1.9 years</b> payback	<b>A\$1,626</b> cash / oz Au

**Preliminary test:** solve for capex, opex & mine design @ 5Mtpa

Initial 6 year mine → strong returns and competitive AISC which would rank well (#18 of 42) among AUS gold-only operations (2)

Efficiency @ conservative initial assumptions = strong baseline

A\$374m infrastructure capex includes A\$70m EPC services / fees

**Key optimisation targets include comminution, power, block model and scheduling → increase LoM & NPV / capex ratio**

1 Refer to ASX announcement dated 16 July 2024; LoM AUD values are net of Ag by-product credits and exclude capitalised pre-strip costs

2 Aurum Analytics – Australian & New Zealand Gold Operations (June Quarter 2024)

# Tunkillia Staged Mine Design

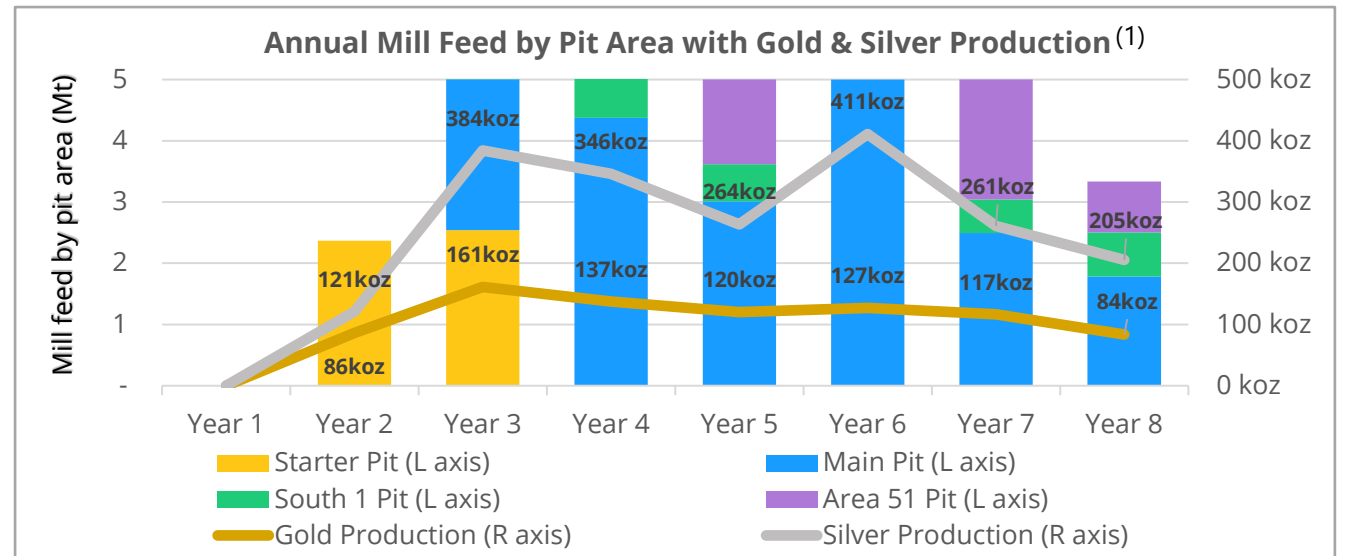
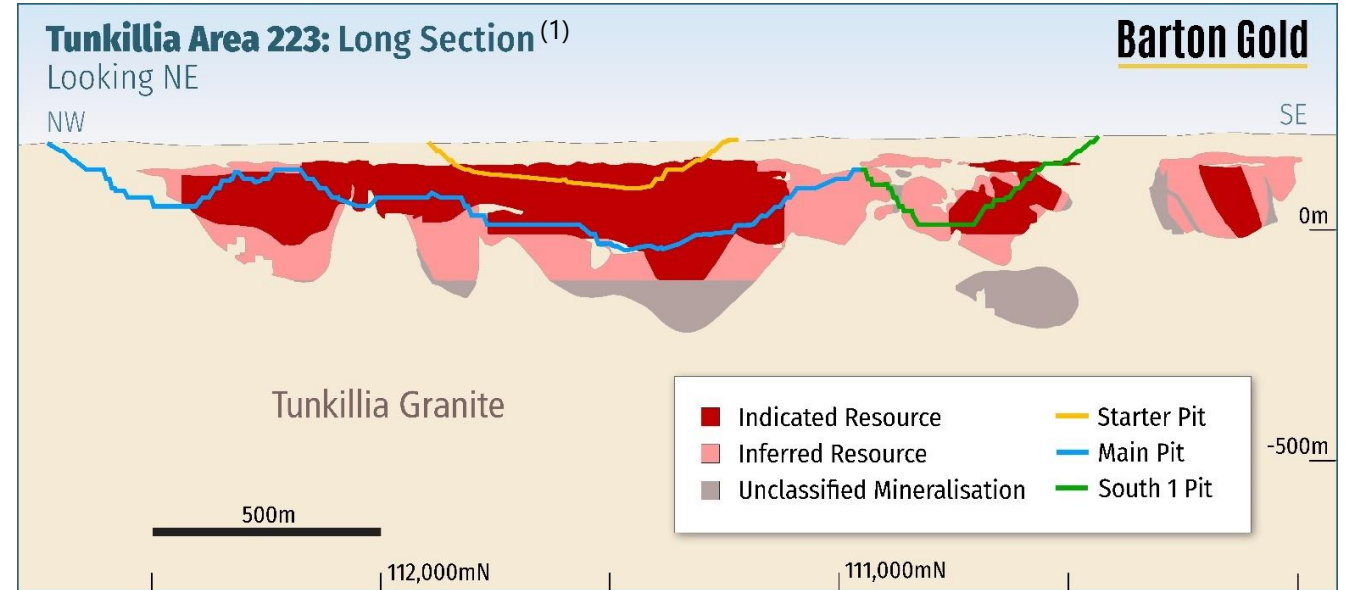
LoM extension opportunities, with high-value 'Starter' pit

## LoM design includes: <sup>(1)</sup>

- 2 pits executed in 4 stages
- ~66% Indicated and ~34% Inferred Resources

## High-value 'Starter Pit': <sup>(1)</sup>

- **First 18 months de-risks development plan**
- **180koz @ A\$1,235/oz = A\$400m gross FCF**



	<u>Units</u>	<u>LoM</u>	<u>'Starter' Pit</u>
Pit Inventory	Mt	30.7	4.9
Avg Gold Grade	g/t Au	0.93	1.26
Avg Silver Grade	g/t Ag	2.52	3.32
Payable Gold	oz	832,852	180,670
Payable Silver	oz	1,992,919	419,953
Revenue <sup>2</sup>	A\$/oz Au	\$3,500	\$3,500
<b>Cash cost<sup>2</sup></b>	<b>A\$/oz Au</b>	<b>\$1,874</b>	<b>\$1,235</b>
<b>Cash margin<sup>2</sup></b>	<b>A\$/oz Au</b>	<b>\$1,626</b>	<b>\$2,265</b>

<sup>1</sup> Refer to ASX announcement dated 16 July 2024

<sup>2</sup> Excluding pre-strip, net of Ag by-product credit

# Tunkillia Key Opportunities

Process efficiencies a key focus for capex, opex & mine optimisation

**Conservative assumptions** offer multiple areas for potential optimisation of Tunkillia Scoping Study

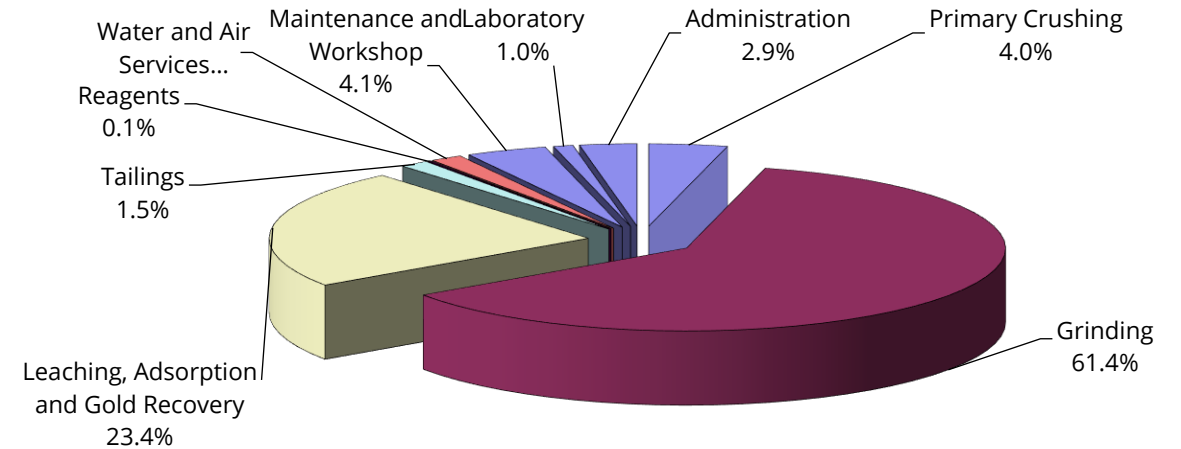
**Power** is the greatest single process opex cost; grinding alone is over 60% of total process cost

**Grinding costs** initially assumed 100<sup>th</sup> percentile (highest) work index test results, increasing power, opex, and capex → significant savings opportunity

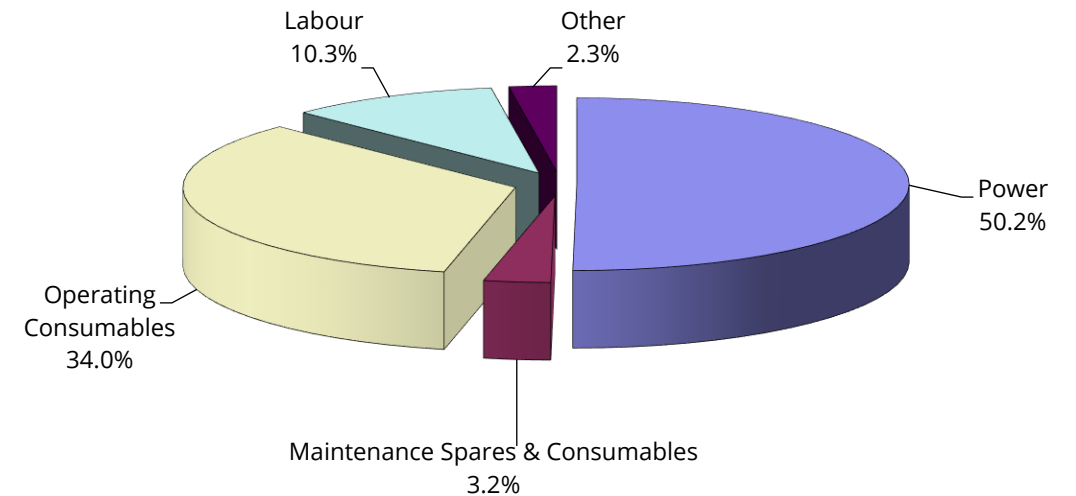
**Pit optimisation** to follow opex review and further drilling → optimize design and increase total LoM

**Scheduling** of construction and mined materials

**Detailed 3<sup>rd</sup> party review and further drilling, targeting H1 2025 Optimised Scoping Study**



**Process operating cost breakdown by area (fresh materials)<sup>1</sup>**



**Process opex cost breakdown by input cost (fresh materials)<sup>1</sup>**

<sup>1</sup> Refer to ASX announcement dated 16 July 2024

# Tunkillia District Scale Potential

20km+ of untested strike on a major shear system



## District scale geology

- Major geological 'triple point' (1)
- Kms-wide Kalgoorlie style shear zone (2)
- Potential for significant fluid flows



## Early days: majority untested

- Current focus ~10% of shear margins
- **+20km untested strike along shear**

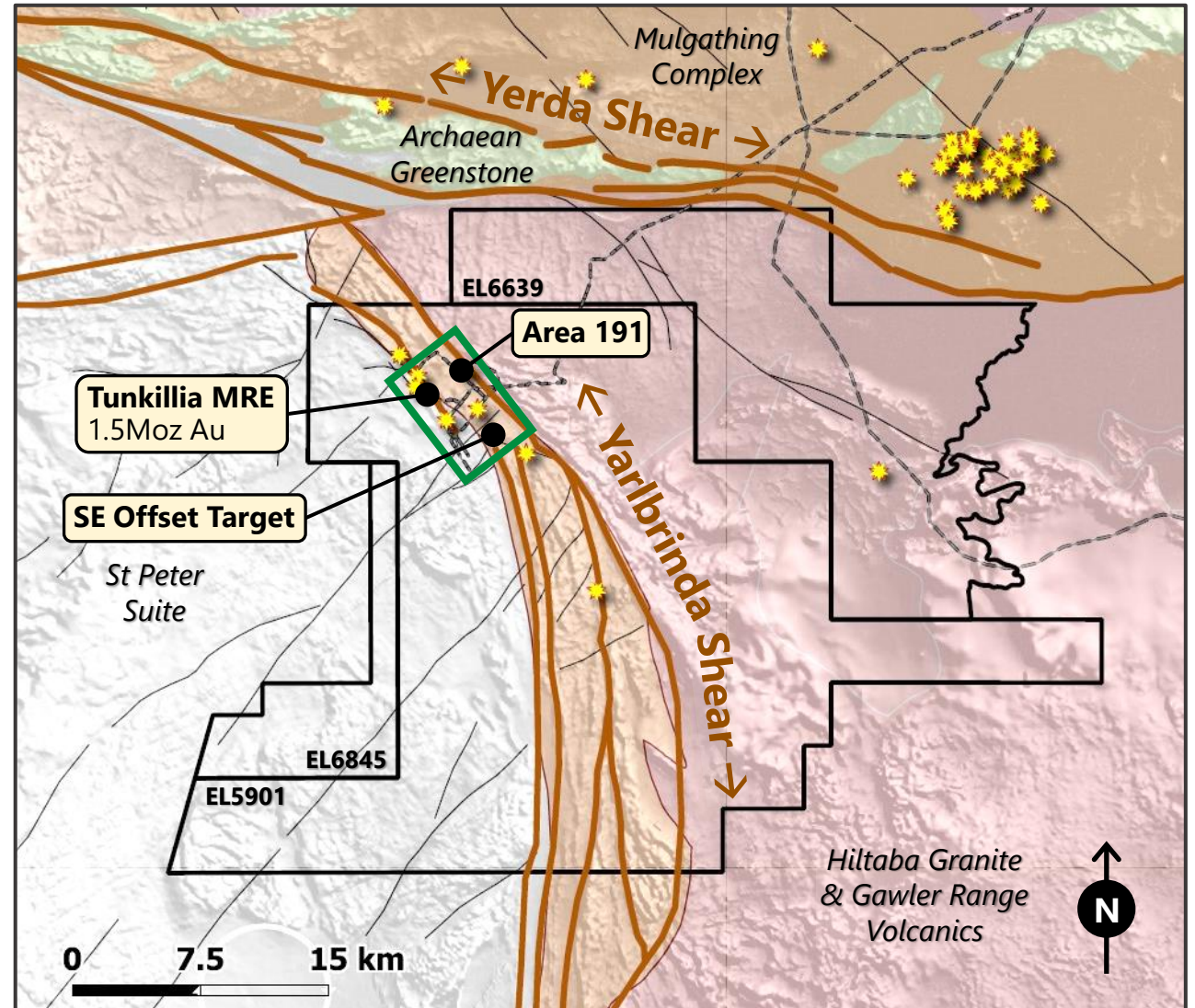


## Strong exploration pipeline

- Area 191 & SE Offset anomalies
- **Current Resources all in ~5km cluster**
- **Large-scale anomalies along strike**

1 Refer to ASX announcement dated 26 Apr 2023

2 Refer to Prospectus and ASX announcement dated 26 Apr 2023





# Tarcoola High-Grade History

Potential high-grade 'Stage 1' feed and future 'Stage 2' blend



## ML6455: the home of SA gold

- 1893 gold rush (~1893 – 1950) produced ~77koz Au @ 37.5 g/t Au <sup>(1)</sup>
- Produced open pit ore @ ~3.8 g/t Au → Central Gawler Mill during 2018 <sup>(1)</sup>



## Perseverance open pit mine

- Shallow open pit, fully permitted ML
- **20koz Au → 'Stage 1' feed option** <sup>(2)</sup>



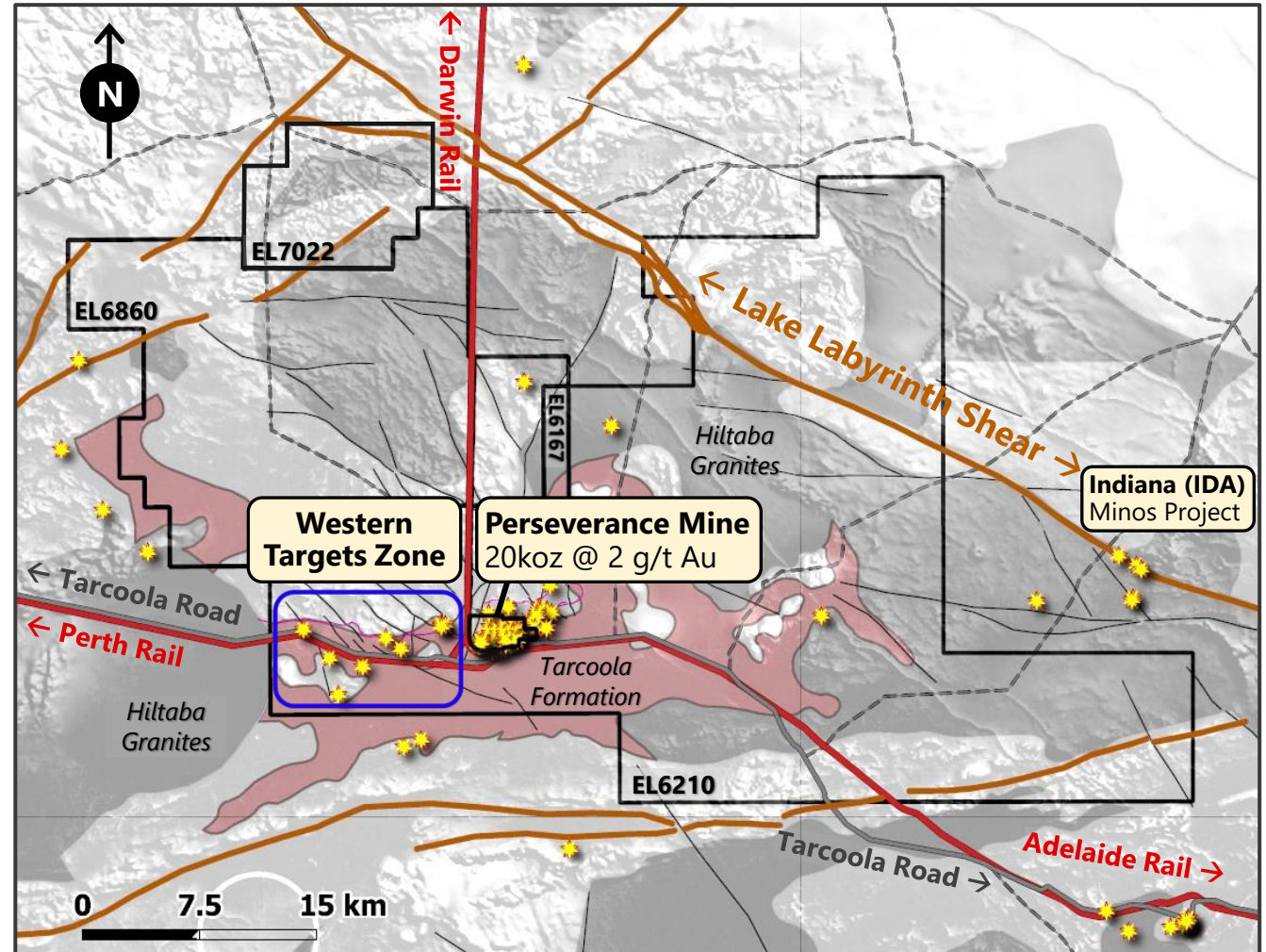
## Large scale target systems

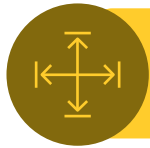
- New structural model developed for high-grade Tarcoola Goldfield
- **Majority of structures untested, recent new high-grade discovery** <sup>(3)</sup>

<sup>1</sup> Refer to Prospectus

<sup>2</sup> Refer to ASX announcement dated 3 July 2024

<sup>3</sup> Refer to ASX announcement dated 27 August 2024





# Tarcoola Perseverance Mine

Extensions = high-value ounces for existing fully permitted mill

## Fully permitted mine

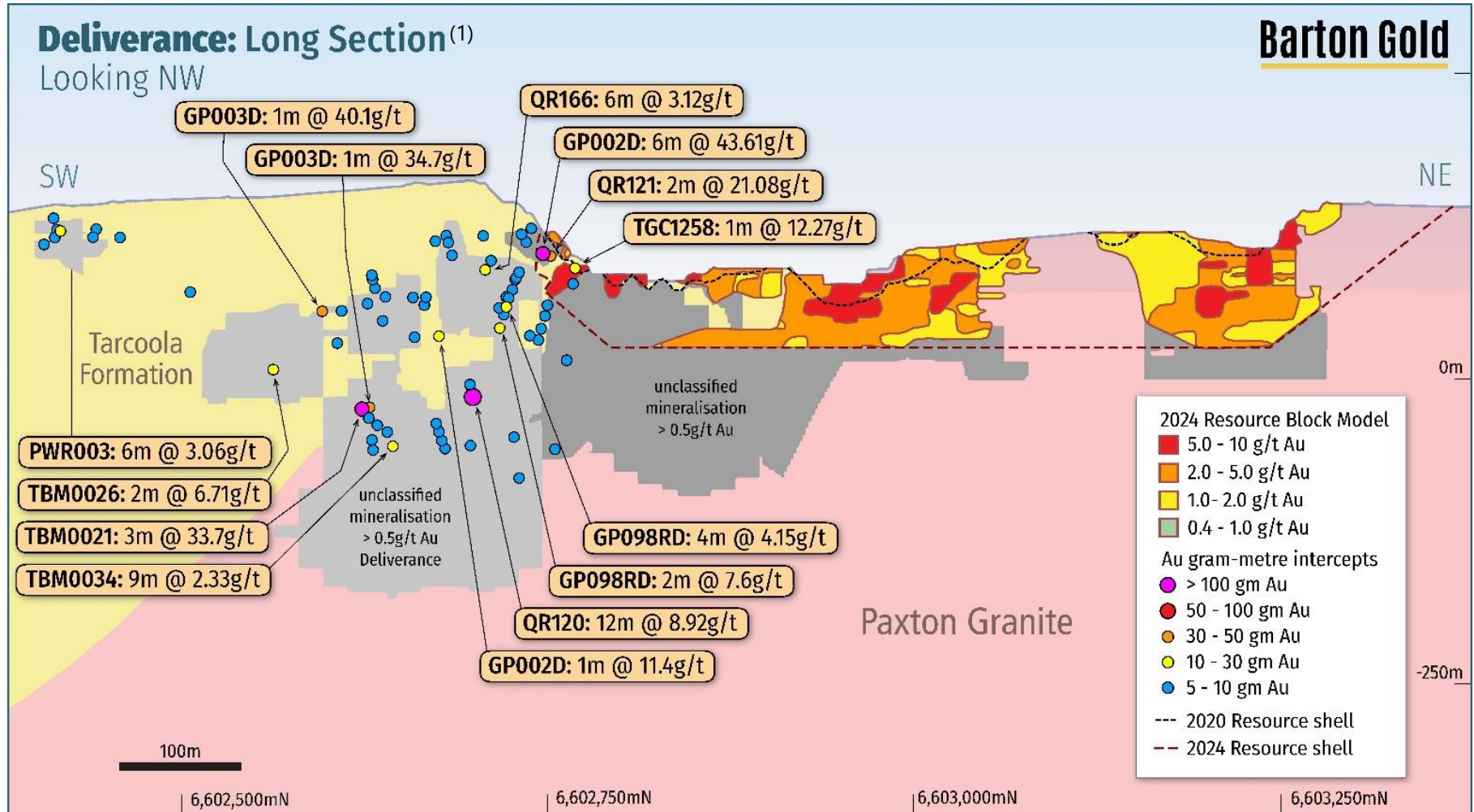
- Native Title approval and permits in place
- Operated 2017-2018

## High-value ounces <sup>(1)</sup>

- Pit floor: ~20koz Au
- Stockpile: ~10koz Au

## Extension potential <sup>(1)</sup>

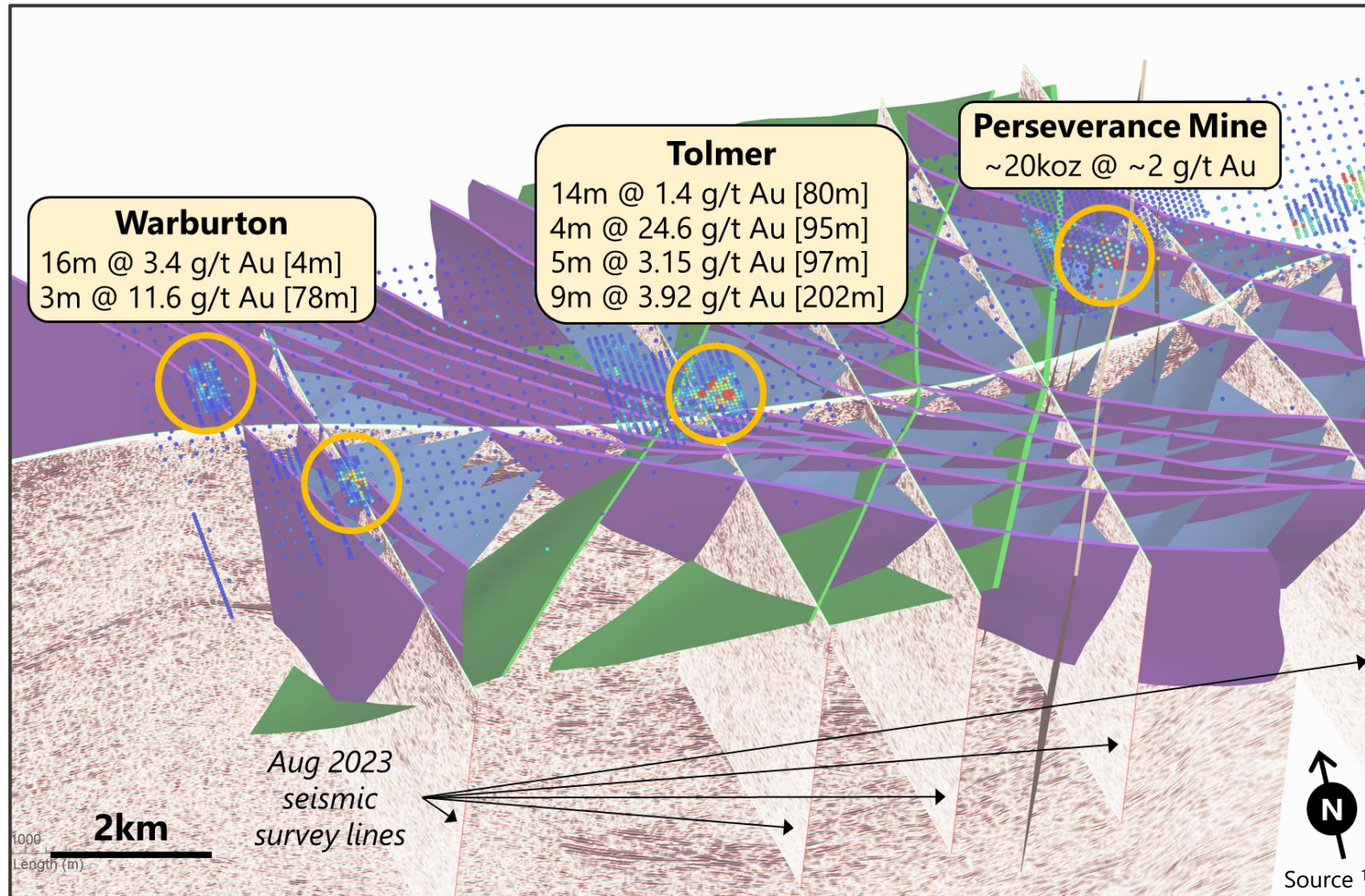
- Grey areas modelled but not JORC classified
- **Recent drilling may convert additional open pit Resources**



<sup>1</sup> Refer to ASX announcement dated 3 July 2024

# Tarcoola Emerging Platform

New 3D architectural model for high-grade historical goldfield



Structures mapped under ~15km historical high-grade gold field <sup>(1)</sup>

First time since 1893 that gold occurrences can be put into a consistent structural framework

### Significant opportunity:

- Previously unknown structures
- Identify mineralisation controls
- Confirm new mineralisation for 'Stage 1' / 'Stage 2' platforms

**Tolmer drilling confirmed new gold system of quartz veining within broader alteration <sup>(1)</sup>**

<sup>1</sup> Refer to Prospectus and ASX announcements dated 10 Mar and 28 Nov 2023, 3 July 2024 and 27 August 2024

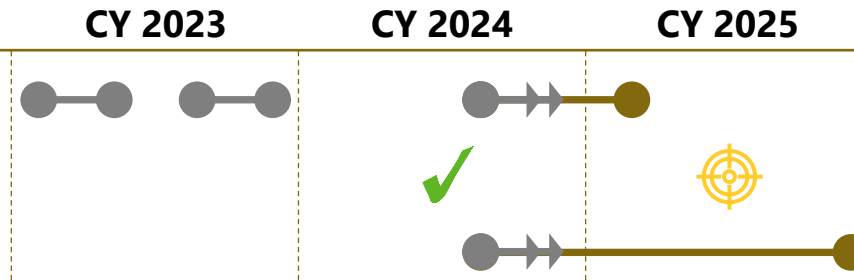




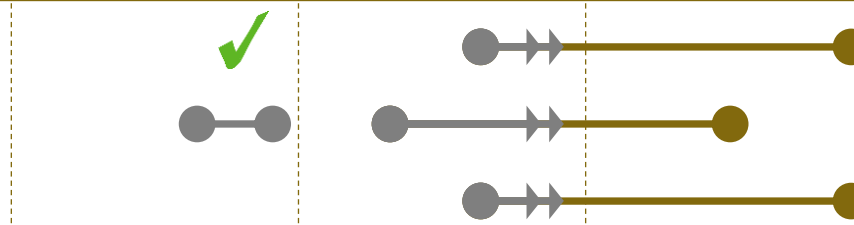
# Coming Up

Consistent progress = pathway to S1 operations and staged growth

## Stage 2 | Optimise Tunkillia



## Stage 1 | Crystallise feed options



## Corporate | Keep unlocking value



**Focus on continued cost-efficient project advancement & asset monetization;**  
**→ Barton has generated +\$10m additional non-dilutive cash since IPO <sup>(2)</sup>**

<sup>1</sup> Refer to ASX announcements dated 30 June and 20 December 2022, 21 August 2023 and 18 June 2024

<sup>2</sup> Refer to ASX announcements dated 28 / 30 Jun, 26 Sep, 25 Oct and 11 Nov 2022, 28 Mar and 21 Aug 2023, 18 June 2024 & FY 2022 / 2023 / 2024 Appendix 5Bs



*Perseverance open pit mine*



# Summary Platform & performance → Value



**Strategic platform** with valuable existing infrastructure provides optionality and clear development pathways



**Advancing consistently** with long-term 'Stage 2' platform demonstrated, focus shifting to near-term 'Stage 1' options



**Well capitalized** with fully aligned leadership team and robust support from high quality share register



**Multiple catalysts** and frequent news



**Accessible** in AUD, USD and EUR on Australian, US and German markets



OTC

QB

BÖRSE  
FRANKFURT



# Barton Gold

## Contact



### **Barton Gold**

Level 4, 12 Gilles Street  
Adelaide SA 5000

[contact@bartongold.com.au](mailto:contact@bartongold.com.au)

[www.bartongold.com.au](http://www.bartongold.com.au)



### **Alexander Scanlon** Managing Director & CEO

[a.scanlon@bartongold.com.au](mailto:a.scanlon@bartongold.com.au)

+61 425 226 649



### **Shannon Coates** Company Secretary

[cosec@bartongold.com.au](mailto:cosec@bartongold.com.au)

+61 8 9322 1587



# JORC (2012) Mineral Resources <sup>(1)</sup>

Project	Zone	Indicated			Inferred			TOTAL		
		MT	g/t Au	koz Au	MT	g/t Au	koz Au	MT	g/t Au	koz Au
<b>Tunkillia (100%)*</b>										
Area 223	Oxide	0.71	1.29	30	0.80	0.95	25	1.52	1.11	54
	Transitional	3.06	1.19	117	3.80	0.87	106	6.84	1.01	223
	Fresh	22.0	0.92	648	15.9	0.88	453	37.9	0.90	1,100
		<b>25.8</b>	<b>0.96</b>	<b>794</b>	<b>20.5</b>	<b>0.88</b>	<b>583</b>	<b>46.3</b>	<b>0.93</b>	<b>1,378</b>
Area 51	Oxide	--	--	--	0.19	0.87	5	0.19	0.87	5
	Transitional	--	--	--	1.02	0.72	24	1.02	0.72	24
	Fresh	0.93	0.87	26	2.84	0.66	60	3.77	0.71	86
		<b>0.93</b>	<b>0.87</b>	<b>26</b>	<b>4.05</b>	<b>0.68</b>	<b>89</b>	<b>4.98</b>	<b>0.72</b>	<b>115</b>
	<b>Total Tunkillia</b>	<b>26.7</b>	<b>0.96</b>	<b>820</b>	<b>24.6</b>	<b>0.85</b>	<b>672</b>	<b>51.3</b>	<b>0.91</b>	<b>1,493</b>
<b>Tarcoola (100%)*</b>										
Perseverance Pit	Oxide	--	--	--	0.00	0.62	--	0.00	0.62	0
	Transitional	0.01	1.34	0	0.01	1.00	0	0.01	1.14	1
	Fresh	0.18	2.12	12	0.11	1.89	7	0.30	2.03	19
		<b>0.19</b>	<b>2.10</b>	<b>13</b>	<b>0.12</b>	<b>1.83</b>	<b>7</b>	<b>0.31</b>	<b>1.99</b>	<b>20</b>
Stockpile	Oxide	--	--	--	0.17	1.20	7	0.17	1.20	7
	Fresh	--	--	--	0.06	1.40	3	0.06	1.40	3
		<b>--</b>	<b>--</b>	<b>--</b>	<b>0.23</b>	<b>1.30</b>	<b>10</b>	<b>0.23</b>	<b>1.30</b>	<b>10</b>
	<b>Total Tarcoola</b>	<b>0.19</b>	<b>2.10</b>	<b>13</b>	<b>0.35</b>	<b>1.48</b>	<b>17</b>	<b>0.54</b>	<b>1.70</b>	<b>30</b>
<b>Challenger (100%)*</b>										
	Above 215 RL Fault	--	--	--	0.32	4.10	43	0.32	4.10	43
	Challenger Deeps (below 90m RL)	--	--	--	0.21	3.50	23	0.21	3.50	23
	<b>Total Challenger</b>	<b>--</b>	<b>--</b>	<b>--</b>	<b>0.53</b>	<b>3.90</b>	<b>66</b>	<b>0.53</b>	<b>3.90</b>	<b>66</b>
<b>TOTAL</b>		<b>26.9</b>	<b>0.96</b>	<b>833</b>	<b>25.4</b>	<b>0.92</b>	<b>754</b>	<b>52.3</b>	<b>0.94</b>	<b>1,588</b>

\* Table shows complete JORC Mineral Resources Estimate (MRE) for each Project on a 100% basis.

Figures are subject to rounding, tonnages are dry-metric tonnes, and all Mineral Resources classified as 'Inferred' are approximate.

Cut-off grades applied are:

- 0.4 g/t Au (Tunkillia Area 223)
- 0.5 g/t Au (Tunkillia Area 51)
- 0.5 g/t Au (Tarcoola Perseverance)
- 0.4 g/t Au (Tarcoola Stockpiles)
- 2.0 g/t Au (Challenger)

(1) Refer to Prospectus and ASX announcements dated 14 October 2021, 26 April 2023, 1 September 2023, 11 December 2023, 4 March 2024 and 3 July 2024 for further details of Barton's JORC (2012) Mineral Resources inventory



# Competent Persons Statements

The information relating to Exploration Results and Mineral Resources in this presentation is extracted from the Company's Prospectus dated 14 May 2021 (Prospectus) and Barton ASX announcements as cross-referenced in the body of this presentation. A copy of the Prospectus is available for download at [www.bartongold.com.au](http://www.bartongold.com.au) or [www.asx.com.au](http://www.asx.com.au). Following publication of the Prospectus, the Company published details of updated Mineral Resource Estimates (including in respect of the Company's attributable ownership where a project is not wholly owned) on 14 October 2021 and 1 September 2023 (for the Western Gawler Craton Joint Venture Project, in which the Company no longer has any interest) and 26 April 2023, 11 December 2023 and 4 March 2024 (for the Tunkillia Project) and 3 July 2024 (for the Tarcoola Project). The Company confirms that the form and context in which the applicable Competent Persons' findings are presented have not been materially modified from the relevant market announcement. The Company confirms that it is not aware of any new information or data that materially affects the Exploration Results and Mineral Resource information included in previous announcements and, in the case of estimates of Mineral Resources, that all material assumptions and technical parameters underpinning the estimates in the previous announcements continue to apply and have not materially changed.

The Scoping Study referred to in this Presentation is a preliminary technical and economic study of Tunkillia's potential viability. It is based on low level technical and economic assessments insufficient to support the estimation of Ore Reserves. Further exploration and evaluation work and appropriate studies are required before Barton will be in a position to estimate any Ore Reserves or to provide any assurance of an economic development case. All material assumptions underpinning the production targets and forecast financial information derived from the production targets continue to apply and have not materially changed.

## **Competent Persons (Tarcoola)**

The information in this presentation that relates to the estimate of open pit Mineral Resources for the Tarcoola Gold Project is based upon, and fairly represents, information and supporting documentation compiled by Mr Ian Taylor BSc (Hons). Mr Taylor is an employee of Mining Associates Pty Ltd and has acted as an independent consultant on Barton Gold's Tarcoola Gold Project, South Australia. Mr Taylor is a Fellow and certified Professional of the Australian Institute of Mining and Metallurgy (FAusIMM (CP Geo) 110090) and has sufficient experience with the style of mineralisation, the deposit type under consideration and to the activity being undertaken, to qualify as a Competent Person as defined in the 2012 Edition of the "Australasian Code for Reporting of Exploration Results, Mineral Resources and Ore Reserves" (The JORC Code).

The information in this presentation that relates to the estimate of stockpile Mineral Resources for the Tarcoola Gold Project is based upon, and fairly represents, information and supporting documentation compiled by Dr Andrew Fowler MAusIMM CP (Geo). Dr Fowler is an employee of Mining Plus Pty Ltd and has acted as an independent consultant on Barton Gold's Tarcoola Gold Project, South Australia. Dr Fowler is a Member of the Australian Institute of Mining and Metallurgy (AusIMM) and has sufficient experience with the style of mineralisation, the deposit type under consideration and to the activity being undertaken, to qualify as a Competent Person as defined in the 2012 Edition of the "Australasian Code for Reporting of Exploration Results, Mineral Resources and Ore Reserves" (The JORC Code).

The information in this presentation that relates to Exploration Results for the Tarcoola Gold Project prior to 15 Nov 2021 (including drilling, sampling, geophysical surveys and geological interpretation) is based upon, and fairly represents, information and supporting documentation compiled by Mr Colin Skidmore BSc Hons (Geology) MAppSc. Mr Skidmore is an employee of Mining Plus Pty Ltd and has acted as an independent consultant on Barton Gold's Tarcoola Gold Project, South Australia. Mr Skidmore is a Member of the Australian Institute of Geoscientists (AIG Member 05415)) and has sufficient experience with the style of mineralisation, the deposit type under consideration and to the activity being undertaken, to qualify as a Competent Person as defined in the 2012 Edition of the "Australasian Code for Reporting of Exploration Results, Mineral Resources and Ore Reserves" (The JORC Code).

The information in this presentation that relates to new Exploration Results for the Tarcoola Gold Project after 15 Nov 2021 (including drilling, sampling, geophysical surveys and geological interpretation) is based upon, and fairly represents, information and supporting documentation compiled by Mr Marc Twining BSc Hons (Geology). Mr Twining is a full-time employee of Barton Gold Holdings Ltd, and is a Member of the Australasian Institute of Mining & Metallurgy (AusIMM Member 112811) and has sufficient experience with the style of mineralisation, the deposit types under consideration and to the activity being undertaken, to qualify as a Competent Person as defined in the 2012 Edition of the "Australasian Code for Reporting of Exploration Results, Mineral Resources and Ore Reserves" (The JORC Code).

## **Competent Person (Tunkillia)**

The information in this presentation that relates to the estimate of Mineral Resources for the Tunkillia Gold Project (including drilling, sampling, geophysical surveys and geological interpretation) is based upon, and fairly represents, information and supporting documentation compiled by Mr Ian Taylor BSc (Hons). Mr Taylor is an employee of Mining Associates Pty Ltd and has acted as an independent consultant on Barton Gold's Tunkillia Gold Project, South Australia. Mr Taylor is a Fellow and certified Professional of the Australian Institute of Mining and Metallurgy (110090) and has sufficient experience with the style of mineralisation, the deposit type under consideration and to the activity being undertaken, to qualify as a Competent Person as defined in the 2012 Edition of the "Australasian Code for Reporting of Exploration Results, Mineral Resources and Ore Reserves" (The JORC Code).

The information in this presentation that relates to Exploration Results for the Tunkillia Gold Project prior to 15 Nov 2021 (including drilling, sampling, geophysical surveys and geological interpretation) is based upon, and fairly represents, information and supporting documentation compiled by Mr Colin Skidmore BSc Hons (Geology) MAppSc. Mr Skidmore is an employee of Mining Plus Pty Ltd and has acted as an independent consultant on Barton Gold's Tunkillia Gold Project, South Australia. Mr Skidmore is a Member of the Australian Institute of Geoscientists (AIG Member 05415)) and has sufficient experience with the style of mineralisation, the deposit type under consideration and to the activity being undertaken, to qualify as a Competent Person as defined in the 2012 Edition of the "Australasian Code for Reporting of Exploration Results, Mineral Resources and Ore Reserves" (The JORC Code).

The information in this presentation that relates to new Exploration Results for the Tunkillia Gold Project after 15 Nov 2021 (including drilling, sampling, geophysical surveys and geological interpretation) is based upon, and fairly represents, information and supporting documentation compiled by Mr Marc Twining BSc Hons (Geology). Mr Twining is a full-time employee of Barton Gold Holdings Ltd, and is a Member of the Australasian Institute of Mining & Metallurgy (AusIMM Member 112811) and has sufficient experience with the style of mineralisation, the deposit types under consideration and to the activity being undertaken, to qualify as a Competent Person as defined in the 2012 Edition of the "Australasian Code for Reporting of Exploration Results, Mineral Resources and Ore Reserves" (The JORC Code).

## **Competent Person (Challenger)**

The information in this presentation that relates to the estimate of Mineral Resources for the Challenger Mine is based upon, and fairly represents, information and supporting documentation compiled by Mr Dale Sims, a Competent Person, who is a Chartered Professional Fellow of the Australasian Institute of Mining and Metallurgy (AusIMM) and a Member of the Australian Institute of Geoscientists (AIG). Mr Sims is the principal of Dale Sims Consulting Pty Ltd and an independent consultant engaged by Barton Gold for this work and has sufficient experience that is relevant to the style of mineralisation and type of deposit under consideration and to the activity being undertaken to qualify as Competent Person as defined in the 2012 edition of the "Australasian Code for Reporting of Exploration Results, Mineral Resources and Ore Reserves" (The JORC Code).