



November 2024



ASX:LAT



# Disclaimer

## Disclaimer

This presentation has been prepared by Latitude66 Limited ("Company") in connection with providing general and background information on the Company.

This presentation should not be relied upon as a representation of any matter that an advisor or potential investor should consider in evaluating the Company. The Company and its related bodies corporate or any of its directors, agents, officers or employees do not make any representation or warranty, express or implied, as to or endorsement of the accuracy or completeness of any information, statements or representations contained in this presentation, and they do not accept any liability whatsoever (including in negligence) for any information, representation or statement made in or omitted from this presentation.

This document may contain certain forward-looking statements which involve known and unknown risks, delays and uncertainties not under the Company's control which may cause actual results, performance or achievements of the Company to be materially different from the results, performance or expectations implied by these forward looking statements. The Company makes no representation or warranty, express or implied, as to or endorsement of the accuracy or completeness of any information, statements or representations contained in this presentation with respect to the Company. Any discussion in relation to Exploration Targets, over and above the stated Indicated and Inferred Mineral Resources is only conceptual in nature.

Investors are advised that by their nature as visual aids, presentations provide information in a summary form. Investors are urged to read supporting information in full in ASX releases.

This presentation does not constitute an offer of securities in the Company. Nor should this presentation be relied upon by any advisor or potential investor in making an investment decision in the Company.

## Competent Person's Statement

The information in this report that relates to Exploration Results is based on and fairly represents information and supporting documentation compiled by Mr Toby Wellman who is a Member of The Australasian Institute of Mining and Metallurgy and who has sufficient experience relevant to the style of mineralisation and type of deposit under consideration and to the activity which he is undertaking to qualify as a Competent Person as defined in the 2012 Edition of the Australasian Code for Reporting of Exploration Results, Mineral Resources and Ore Reserves (the "JORC Code"). Mr Wellman is an Executive Director of the Company and consents to the inclusion in the report of the Exploration Results in the form and context in which they appear.

## Exploration Targets

This presentation may comment on and discuss the Company's exploration in terms of target size and type. The information relating to Exploration Targets should not be misunderstood or misconstrued as an estimate of Mineral Resources or Ore Reserves. The potential quantity and quality of material discussed as Exploration Targets is conceptual in nature since there has been insufficient work completed to define them as Mineral Resources or Ore Reserves. It is uncertain if further exploration work will result in the determination of a Mineral Resource or Ore Reserve.

(1) Refer to DCX announcement dated 28/03/2024 "Transformational Acquisition of Gold-Cobalt Development Projects"



# Diversified precious and critical minerals company

With 6 development and exploration projects providing exposure to gold and critical minerals in safe mining jurisdictions in Finland and Australia



## Gold & Cobalt Project - Finland

KSB Project includes an existing high-grade gold-cobalt mineral resource with over 85% at Indicated level

**650,000oz Au (2.7g/t) and 5,800t Co (0.08%)<sup>1</sup>**



## Targeting Net Zero

Supported by Finland's commitment to 2035 net zero, one of the most ambitious targets globally

Over 90% of energy production from Finland non-fossil (March 2024)<sup>2</sup>



## Advancing towards Development

Metallurgical results using conventional methods support high recoveries

Advanced engineering on mine design and flow sheet completed



## Near Term resource growth

Huge resource growth potential with multiple prospects across camp scale tenure

Resource deposits all open at depth and along strike



## Copper Joint Venture – Australia

17.5% free-carried interest in Carnaby Resources' (ASX:CNB) Greater Duchess Project

See-through value of CNB JV underpins current DCX market cap<sup>1</sup>

(1) Refer to Prospectus announced by DCX on 26/4/2024  
(2) Refer proposed Critical Raw Materials Act



# Balanced portfolio in Tier 1 jurisdictions

Exposure to Gold and Critical Minerals in two of the best mining jurisdictions

## KSB

- JORC Mineral Resource:
  - **650koz Au & 5,840t Co<sup>1</sup>**
- Camp scale potential with significant exploration upside
  - **K9: 13.45m @ 6.25g/t Au & 0.18% Co<sup>1</sup>**
  - **K8: 10.25m @ 4.84g/t Au & 0.04% Co<sup>1</sup>**
- Development opportunity with significant metallurgical and engineering work completed
- Third largest undeveloped Cobalt resource in European Union<sup>3</sup>

## PSB

- Analogous to KSB geology
- Surrounded by active major miners
- Significant gold & copper prospects to follow up

## Kola / Kolari

- Numerous gold prospects defined



## Greater Duchess JV

- 17.5% free-carried interest
- Copper mineral resources in the Mt Isa Copper district with development potential
- Maiden Indicated and Inferred Mineral Resource of 142,300CuEq tonnes<sup>2</sup> (DCX share 25,000 CuEq tonnes)

## Sylvania

- Existing base metals mineral resources
- Option Agreement with Rio Tinto
- Significant gold prospects defined

## Edjudina

- Along strike from tier 1 gold operations
- Large scale Geochem anomalies up to 544ppb Au<sup>3</sup>

(1) Refer to Prospectus announced by DCX on 26/4/2024

(2) Refer to DCX announcement dated 21/07/2022 "Infill Surface Sampling upgrades Spartan Anomaly"

(3) Refer to Geological Survey of Finland (2020) – "Quantitative assessment of undiscovered resources in Kuusamo-type Co-Au deposits in Finland" by R. Kalevi, E. Pasi, H. Irmeli, K. Jukka, N. Tero, O. Juhani, T. Tuomo



# Corporate Snapshot

**LAT**

ASX Code

**\$17.8m**

Market Cap

**178m**

Shares on Issue

**\$14.5m**

Enterprise Value

**\$0.10**

Share Price (6 November)

**2.5m**

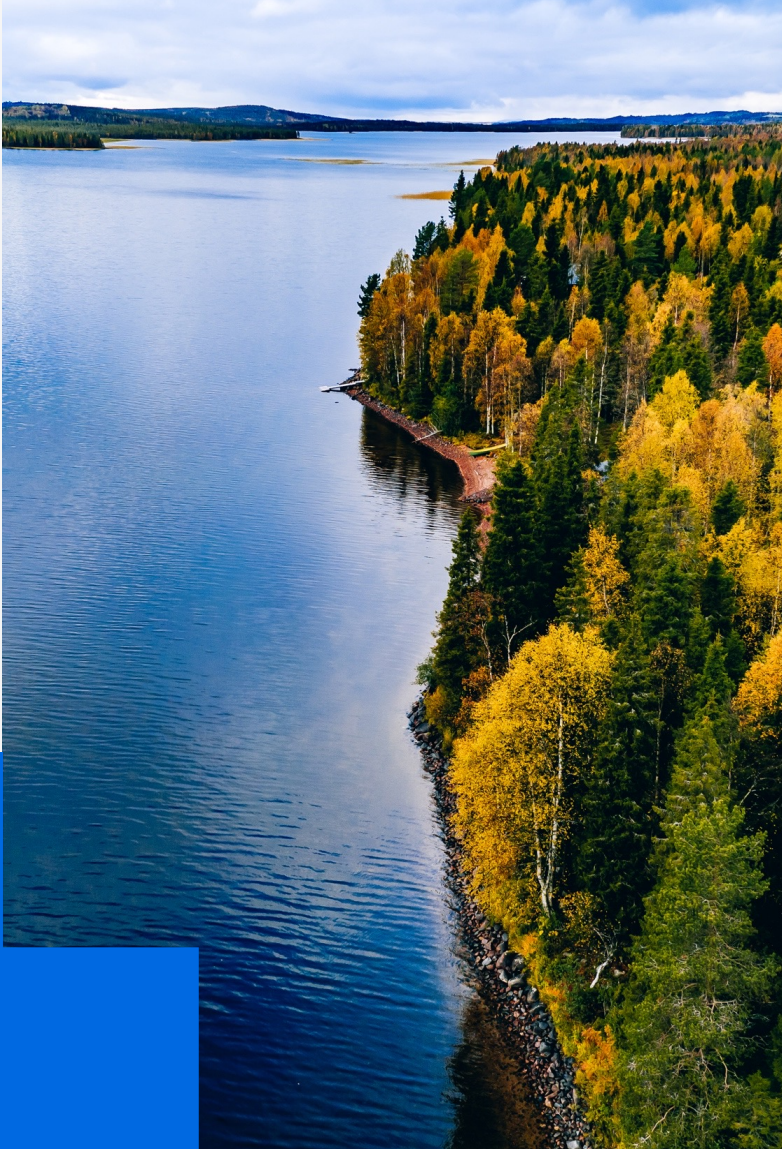
Unlisted Options

**\$3.3m**

Cash (30 September)

**16.5m**

Performance Rights



# Experienced Board of Directors



**Thomas Hoyer**  
Non-Executive Chairman

Various CEO / Director roles in mineral processing, mining and exploration, funds management, and sustainability consultancy

Former CEO of Afarak Group Oyj (LSE listed), operating mines and smelters in Europe and in Africa

2016 Finnish National Award winner for Cultural Heritage



**Grant Coyle**  
Managing Director

Resource executive with over 15 years' experience in Senior Commercial roles, including Rio Tinto

Extensive experience in financial operations and commercial assessment of development and exploration projects across greenfield and brownfield developments

Previously CFO at ASX-listed mining company



**Toby Wellman**  
Technical Director

Geologist with 23 years global multi-commodity experience across the complete mining cycle including exploration, resource development and mining

Previous roles include Exploration Manager for Mont Royal Resources, Senior Exploration roles at Boliden Minerals and Senior Development/Exploration roles at Doray Minerals



**Heath Hellewell**  
Non-Executive Director

Geologist with over 25 years of exploration experience in gold, base metals and diamond exploration

Previous senior exploration positions with Doray Minerals Limited, Independence Group NL (ASX:IGO), Resolute Mining Limited (ASX: RSG) and DeBeers Australia Pty Ltd.

Currently a Non-Executive Director of Core Lithium Ltd (ASX: CXO) and Duketon Mining Limited (ASX: DKM)



**Prof Steffen Hagemann**  
Non-Executive Director

Prof. Hagemann has been the Director of Geology at Lat66 for 6 years. Mr Hagemann is a Professor for Economic Geology and Director of the Centre for Exploration Targeting at the University of Western Australia

33-year experience in economic geology specialising in the field of structural geology, hydrothermal alteration, and fluid chemistry of mainly gold, iron and copper deposits



# Lat66 Quality Project Portfolio

Significant land holding in Northern Finland **4 greenstone belts providing exposure to gold and critical mineral projects**

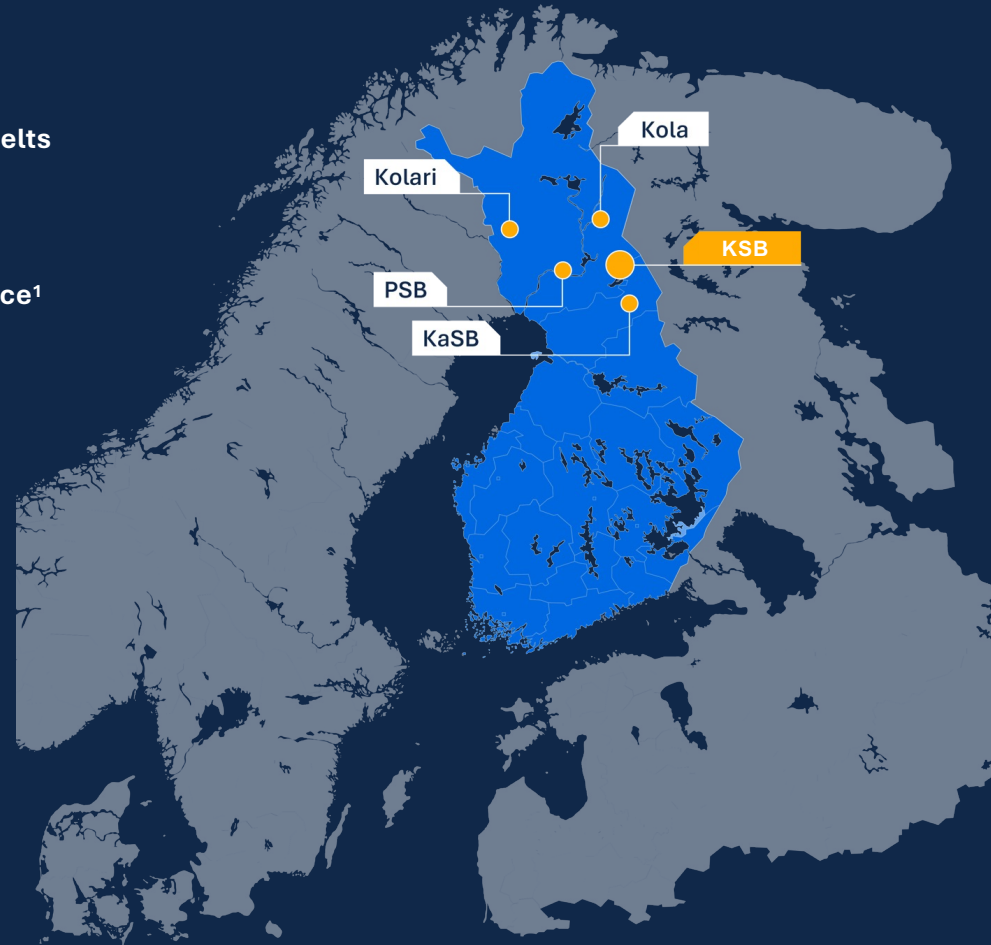
Camp scale potential across the KSB Project with an **existing high-grade gold and cobalt JORC Mineral Resource<sup>1</sup>**

**Short term focus is on testing highly prospective targets** along strike to provide additional resources, with a view of right-sizing the proposed development

**Lat66 has an experienced local management team,** focused on ensuring quality stakeholder engagement and operational delivery

**Development ready** with extensive metallurgical and engineering work undertaken to position KSB on the development pathway

Excellent fundamentals in Finland to pursue pathway to **Net Zero Carbon operations**



(1) Refer to Prospectus announced by DCX on 26/4/2024



# Positioned to benefit from EU Critical Raw Material Act

Cobalt has been identified as a Strategic Mineral under the EU Critical Raw Material Act

**In March 2024, the European Union Council gave its final approval for the Critical Raw Material Act<sup>1</sup>**



**European Critical Raw Materials Act**

- 10% of EU’s material consumed to be extracted domestically
- Permitting to be streamlined for Strategic Projects to maximum of 27 months
- Priority access to EU/government funding for Strategic Projects



Significant supply gap forecasted for EU mined cobalt to meet 10% requirement by 2030<sup>2</sup>

As Cobalt is a defined Strategic Mineral it may enable cobalt projects to receive Strategic Project status

(1) [Strategic autonomy: Council gives its final approval on the critical raw materials act - Consilium \(europa.eu\)](#)  
 (2) Benchmark Mineral Intelligence – Cobalt Forecast





# Finland has the right geology

## Gold

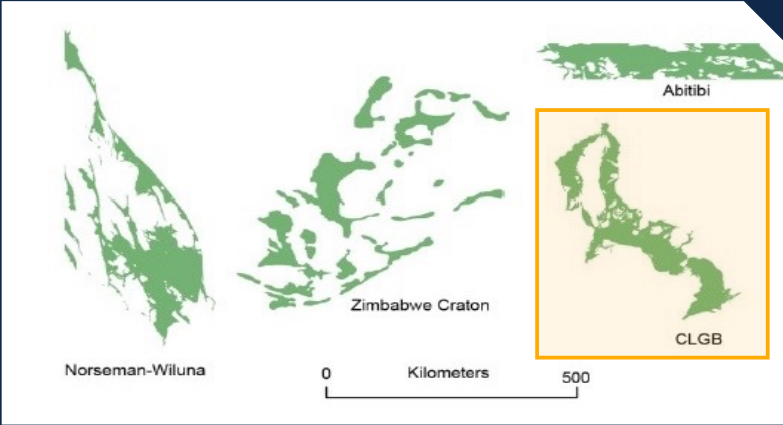
Orogenic gold, IOCG, massive-sulfide hosted gold, paleoplacer mineral systems present

Immature and underexplored greenstone belts – Two world-class deposits discovered to date:

Kitillä (~6.3Moz Au)<sup>1</sup> – Agnico Eagle Mines Limited

Ikkari (~4.2Moz Au)<sup>2</sup> – Rupert Resources

### Comparable to large greenstone belts with significant Gold districts



(1) Previously announced by Agnico Eagle Mines Limited TSX:AEM on 15/2/2024  
 (2) Previously announced by Rupert Resources Ltd TSX:RUP on 28/11/2023

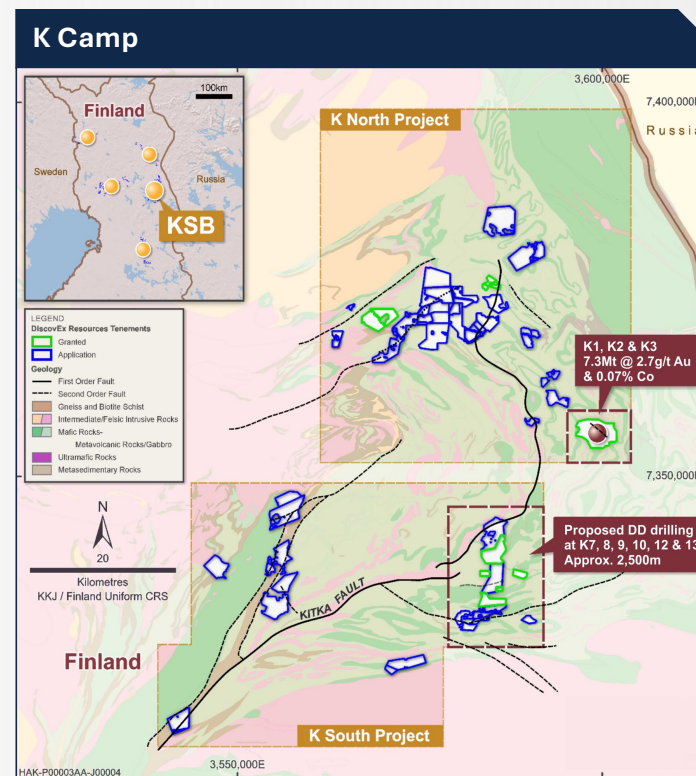


# KSB Project – poised to grow

- K North**  
 JORC compliant resources of 650,000oz Au (7.3Mt @ 2.7g/t) and 5,840t Co (@ 0.08%)<sup>1</sup>  
 Progressing towards a material mining centre with multiple resource positions all open at depth and along strike
- K South**  
 Multiple well-defined mineralisation targets all open at depth and along strike.  
 Progressing towards becoming a material contributor to K Camp development plan

## K North camp gold mineral resource estimate<sup>1</sup>

Deposit	Category	Tonnage (kt)	Au (g/t)	Co (%)	Au (oz)	Co (t)
K1	Indicated	4,600	2.9	0.10	430,000	4,400
	Inferred	1,200	2.1	0.05	80,000	570
	<b><i>SUB-TOTAL</i></b>	<b>5,800</b>	<b>2.7</b>	<b>0.09</b>	<b>510,000</b>	<b>5,010</b>
K2	Indicated	960	3.2	0.05	100,000	500
	Inferred	90	1.7	0.05	5,000	50
	<b><i>SUB-TOTAL</i></b>	<b>1,050</b>	<b>3.1</b>	<b>0.05</b>	<b>105,000</b>	<b>550</b>
K3	Indicated	340	2.2	0.06	24,000	210
	Inferred	120	2.0	0.06	8,000	70
	<b><i>SUB-TOTAL</i></b>	<b>450</b>	<b>2.2</b>	<b>0.06</b>	<b>32,000</b>	<b>280</b>
<b>GRAND TOTAL</b>		<b>7,300</b>	<b>2.7</b>	<b>0.08</b>	<b>650,000</b>	<b>5,840</b>



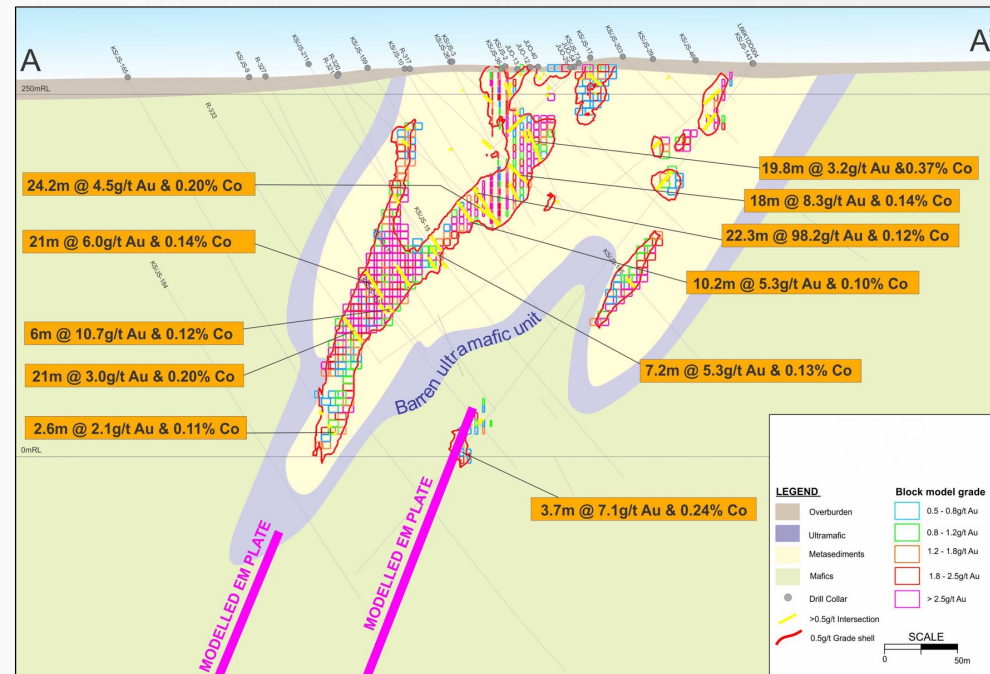
(1) Refer to Prospectus announced by DCX on 26/4/2024



# K1 – excellent grade from surface

- 470m strike-length (open NW and SE)
- Mineralisation from surface to over 450m depth (open down dip/plunge)
- Multiple untested EM plates down dip/plunge and along strike from existing mineralisation
- Au and Co associated with intense hydrothermally altered, locally sulfidised shear zones within isoclinally folded metasedimentary-mafic-ultramafic rock package

**K1 Mineral Resource<sup>1</sup>**



(1) Refer to Prospectus announced by DCX on 26/4/2024



# K South fast route to adding resource inventory

Recent successes demonstrate the near surface gold and cobalt potential of the camp<sup>1</sup>

## K9 TARGET - High Grade Au-Co Potential

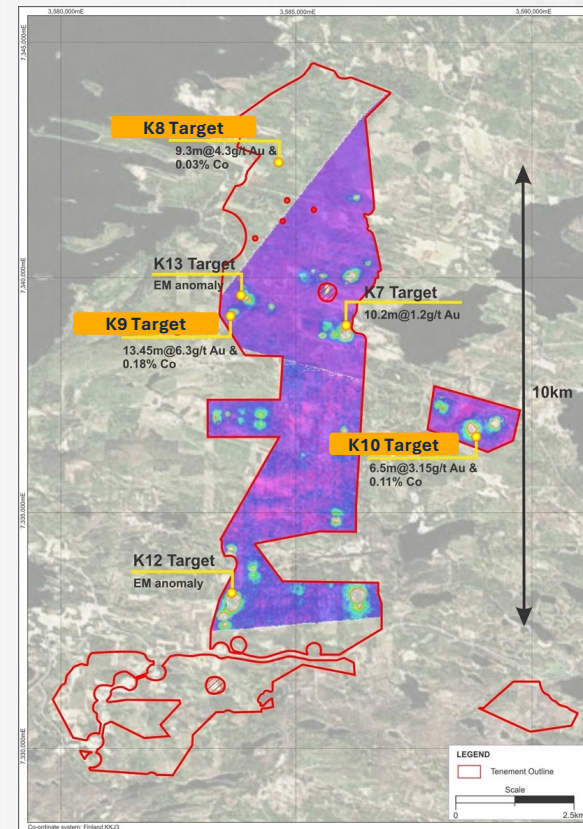
- 13.4m @ 6.25g/t Au & 0.18% Co** from 21.1m (L66K9DD008)
- 13.8m @ 3.56g/t Au & 0.04% Co** from 62.7m (L66K9DD008)
- 22.4m @ 2.4g/t Au & 0.07% Co** from 43.6m (L66K9DD010)
- 50.1m @ 0.45% Co** from 124.75m (L66K9DD001)

## K8 TARGET – Near Term Resource Opportunity

- 19.0m @ 6.0 g/t Au & 0.04% Co** from 97.5m (M461184R305)
- 9.3m @ 4.32g/t Au & 0.03% Co** from 23.9m (L66K8DD003)
- 10.2m @ 4.84g/t Au & 0.04% Co** from 89.75m (L66K8DD002)
- 6.5m @ 8.1 g/t Au & 0.01% Co** from 45.1m (SAY003)

## K10 TARGET – Exploration Upside

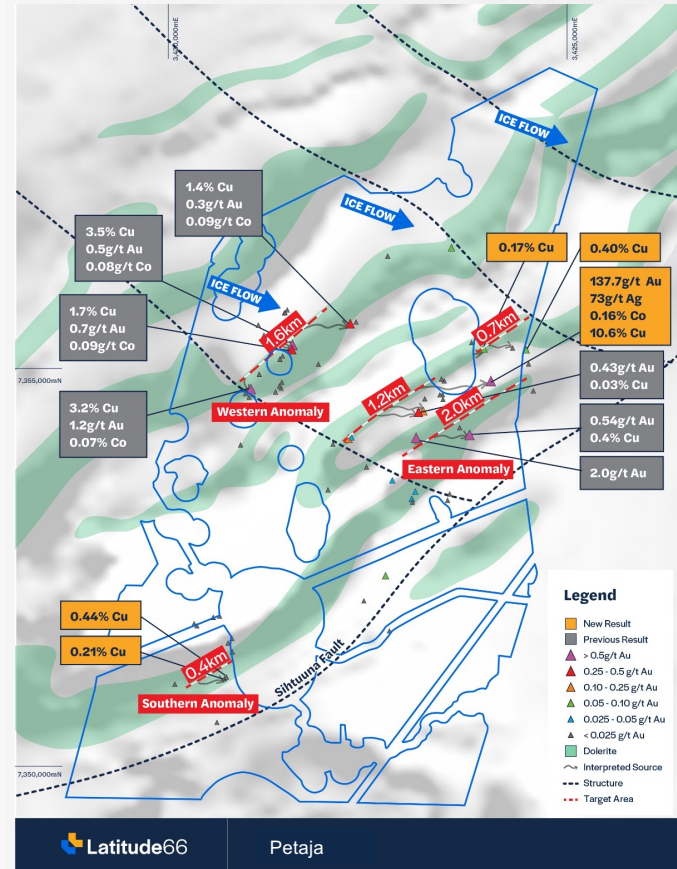
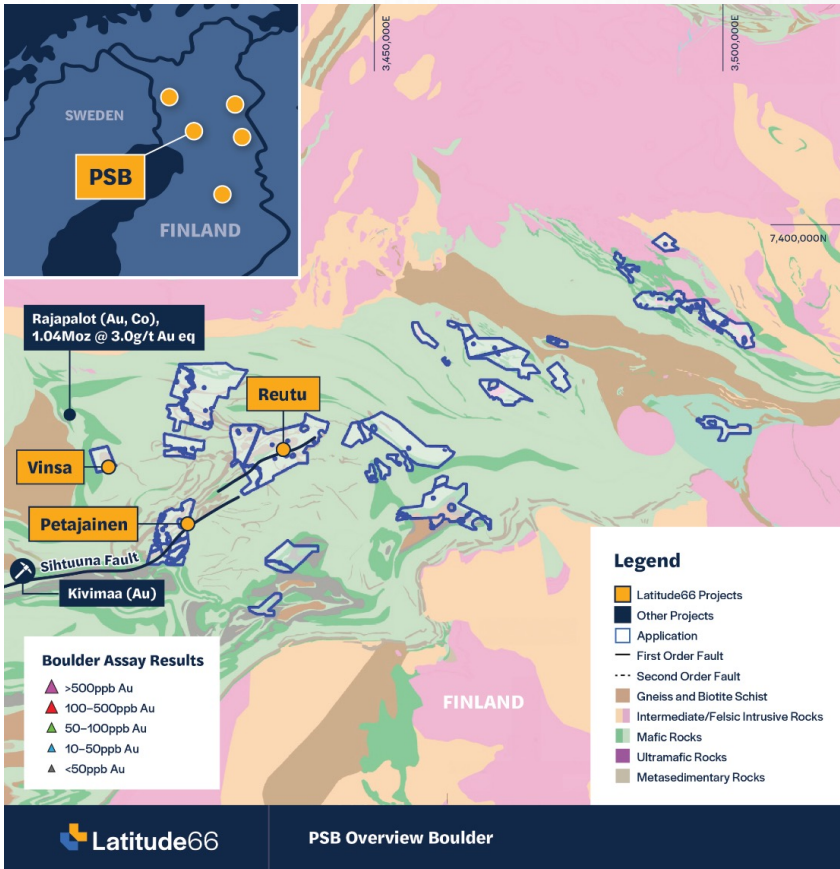
- 6.5m @ 3.15g/t Au & 0.11% Co** from 321.9m (L66K10DD005)



(1) Refer to Prospectus announced by DCX on 26/4/2024 and LAT announcement on 8/7/2024

# PSB Project

## Regional upside Gold and Copper potential



(1) Refer to ASXs announced by on 22/7/2024



# Why Invest?

## **Diversified precious and critical minerals company**

Project portfolio includes six development and exploration projects providing exposure to gold and critical minerals

## **Safe Mining Jurisdictions**

Assets in Australia and Finland, both safe mining jurisdictions  
Finland has excellent geology and some of the largest mining projects in Europe

## **Advancing towards Development**

Metallurgical results using conventional methods support high recoveries.  
Advanced engineering on mine design and flow sheet completed.  
Permitting progressing

## **Experienced leadership team**

The Company's new Board and management team is highly experienced in the discovery, development and exploitation of mineral deposits

## **Targeting Net Zero**

Targeting net zero carbon cobalt and gold  
Supported by Finland's commitment to 2035 net zero, one of the most ambitious targets globally  
Over 90% of energy production from Finland non-fossil (July 2023)

## **Highly complementary assets**

Projects are a varying stages of development ranging from early exploration through to project studies providing further diversification across the group





**Grant Coyle**

**P** +61 (0) 421 777 059

**E** [grant@lat66.com](mailto:grant@lat66.com)

**Toby Wellman**

**P** +61 (0) 412 610 326

**E** [toby@lat66.com](mailto:toby@lat66.com)

