



YUKON METALS CORP.

# Creating stakeholder value through discovery in the Yukon.

CSE : YMC  
FSE : E770  
OTCQB : YMMCF

1000-1055 W.Hastings St.  
Vancouver BC V6E 2E9

[info@yukonmetals.com](mailto:info@yukonmetals.com)

[yukonmetals.com](http://yukonmetals.com)

# DISCLAIMER



## Cautionary Note Regarding Forward-Looking Information

This presentation contains statements that, to the extent that they are not historical fact, may constitute “forward-looking information” within the meaning of applicable securities legislation. Any statements that express or involve discussions with respect to predictions, expectations, beliefs, plans, projections, objectives, assumptions or future events or performance (often, but not always using words or phrases such as “may”, “would”, “could”, “will”, “likely”, “expect”, “anticipate”, “believe”, “intend”, “plan”, “forecast”, “project”, “estimate”, “propose”, “outlook”, and or the negative of those words or other similar or comparable words, or stating that certain actions, events or results may, could, would, might or will occur or be taken or achieved) are not statements of historical fact and may be forward-looking information. Forward-looking information in this presentation includes, but is not limited to, information concerning the plans and objectives of management for future exploration and operations on the Company’s projects; timing, type and amount of future exploration activities; results of future exploration and operations, including any drilling and sampling results; advancement of the Company’s projects; declaration of a mineral resource estimate in the future; potential expansion of mineralization; work plans and exploration programs to be conducted; and any other information contained herein that is not a statement of historical fact. Forward-looking information is based on management’s reasonable estimates, expectations, analyses and opinions at the date the information is provided and is based on a number of assumptions and subject to a variety of risks and uncertainties and other factors that could cause actual events or results to differ materially from those projected in the forward-looking information. Assumptions upon which such forward-looking information are based include, without limitation, that all required shareholder, regulatory and third-party consents will be obtained; no significant event occurring outside the ordinary course of business; the legislative and regulatory environment; international conflict; impact of increasing competition; current technological trends; price of minerals, including gold; costs of exploration and development; anticipated results of exploration and development; the effects of past and future pandemics; the ability to operate in a safe and effective manner; and the ability to obtain financing on reasonable terms. Readers are cautioned that the foregoing list is not exhaustive. The Company’s actual results, programs and financial position could differ materially from those anticipated in such forward-looking information as a result of numerous factors, risks and uncertainties, many of which are beyond the Company’s control. These include, but are not limited to, delays in obtaining any required shareholder, governmental and regulatory approvals; legislative changes that impact mining operations in which the Company conducts business; results of exploration activities and development of mineral properties; interpretation of drilling results and other geological data; uncertainties of mineral resource estimations; receipt and security of mineral property titles; changes in project parameters; possible variations of mineral grade or recovery rates; failure of equipment or processes to operate as anticipated; accidents; labour disputes; the inability to obtain key personnel and parts related to operations; receipt of licenses to conduct mining activities; liabilities and risks, including environmental liabilities and risks inherent in the development of the Company’s projects; cost overruns or unanticipated costs and expenses; the availability of funds; fluctuations in metal prices; currency fluctuations; macro-economic market trends, increases in inflation, general market and industry conditions; competition; and war. There is no assurance that forward-looking information will prove to be accurate, as actual results and future events could differ materially from those anticipated in such information. Accordingly, readers should not place undue reliance on this information. The Company does not undertake to update any forward-looking information, except as, and to the extent required by, applicable securities laws.

## Yukon Metals

**Yukon Metals** represents a property portfolio built on over 30 years of prospecting by the Berdahl family, the prospecting team behind Snowline Gold's portfolio of primary gold assets. The Yukon Metals portfolio consists primarily of copper-gold and silver-lead-zinc assets, with a substantial gold and silver component. The Company is led by an experienced Board of Directors and Management team across technical and finance disciplines.

Yukon Metals is focused on fostering sustainable growth and prosperity within Yukon's local communities, while simultaneously enhancing stakeholder value.

### RORY QUINN

President & CEO



**YUKON METALS IS COMPRISED  
OF A STRONG PORTFOLIO OF  
BASE, PRECIOUS AND CRITICAL  
METALS PROJECTS**

**CSE : YMC  
FSE : E770  
OTCQB : YMMCF**

## Board of Directors and Management



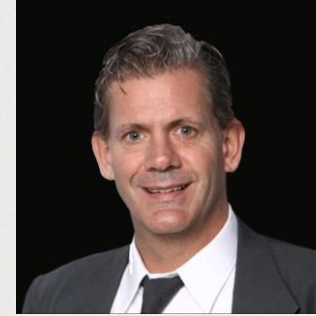
**Patrick Burke**  
Chairman

Mr. Burke is currently a Special Advisor for Capital Markets, Canaccord Genuity Corp. (Canada). He joined Canaccord in October 2015, serving as Head of Canada Capital Markets, bringing more than 25 years of experience and extensive institutional relationships to his role. Prior to joining Canaccord, Pat served as Global Head of Equity and Co-Head of Global Investment Banking for Scotiabank. In that role, he was responsible for oversight of equity sales, trading, research, prime brokerage, equity capital markets, equity derivatives and investment banking. Before that he was Managing Director and Head of Canadian Equities for Merrill Lynch, having held various roles of increasing responsibility since 2000. From 1990 to 2000, Mr. Burke worked in institutional equity and fixed income for Bank of Montreal.



**Dr. Darryl Clark**  
Director

Dr. Clark has decades of global exploration and operating experience in the mining industry. Through his career, Dr. Clark has held a wide range of executive roles across a number of metal and mineral sectors, with both junior and major mining companies. His experience consists of periods working in gold, copper, uranium, coal, and oil sands. Dr. Clark's precious metal experience started at Great Central Mines during the period of rapid resource discovery in the 90's that transformed the West Australian Goldfields. Additional greenfield and project experience was gained at Sunrise Dam Gold Mine, Ivanhoe Mines Mongolia, Vale and SRK consulting where he was involved in several greenfield discoveries. Dr. Clark has over 10 years of experience as a Non-Executive Director on ASX & TSX listed companies. Dr. Clark holds a PhD in Economic Geology from the University of Tasmania and is currently the Executive Vice President Exploration and Development for IsoEnergy Ltd and the Non-Executive Chairman for Waratah Minerals Ltd.



**Daniel Vickerman**  
Director

Mr. Vickerman is a seasoned institutional sales and corporate finance professional with 25 years of experience in the financial industry, currently acting as Senior Vice President of Corporate Development, Board member of Blackrock Silver, and Board member of Discovery Silver. He joined the Board of Discovery in 2019 through the merger with Levon Resources, where he was Board Chairman. Formerly Mr. Vickerman was Managing Director, Head of UK Edgecrest Capital. Before joining Edgecrest Capital UK, Mr. Vickerman was Managing Director; Co-Head of Canadian Equity Sales UK at Canaccord Genuity Corp. Mr. Vickerman has extensive experience working with mineral exploration and development companies, raising equity for public and private companies during their exploration and development. Mr. Vickerman spent over 4 years as a London based alternative asset manager (part of Man Group plc), trading commodities, and foreign exchange.

## Board of Directors and Management



**Natasha Tsai**  
CFO

Ms. Tsai, CPA, CA, is Managing Director at Malaspina Consultants Inc. She has been a senior advisor and CFO with companies in a broad range of industries. Natasha specializes in the areas of financial operations and business performance. Prior to 2012, Natasha was the CFO of a junior mining company and the corporate controller of an early stage company in the energy sector. Natasha is a graduate of Sauder School of Business at UBC and received her Chartered Accountant designation in 2007. She is also a former co-chair of the Young CA Forum at the Institute of Chartered Accountants of BC.



**Helena Kuikka**  
VP, Exploration

Ms. Kuikka is a Professional Geologist who brings over 15 years of comprehensive experience in the mineral exploration and mining industry in precious and base metals projects. During her career she has led grassroots to late-stage development programs and served on the Yukon Technical Liaison Committee for Minerals. Ms. Kuikka has experience with a variety of deposit styles including Ag-Pb-Zn vein, Pb-Zn Sedex, Intrusion Related Gold Systems, Tungsten Skarns, and high-grade Au. Most recently at Victoria Gold, Ms. Kuikka contributed to significant mineral discoveries, managed major near mine and regional exploration projects and was part of the Eagle Mine development team. Helena holds a Bachelor of Science degree in Geology from Simon Fraser University and is registered as a Professional Geoscientist with Engineers and Geoscientists of British Columbia.

## Board of Directors and Management



**Rory Quinn**  
President & CEO

Mr. Quinn has over 20 years of capital markets experience in the global mining space and was the former CEO of E79 Resources Corp. Prior to his CEO roles he was Director, Investor Relations at Wheaton Precious Metals, previously Silver Wheaton. During his tenure at Wheaton, Mr. Quinn worked on acquisitions totalling over US\$6 billion as the company built its precious metal business. Mr. Quinn has been involved in the review of hundreds of mining companies and mining assets from majors to earlier stage developers and explorers in assessing high-quality investment opportunities around the globe. Prior to joining Wheaton, Mr. Quinn worked in Toronto at Castle Gold, which was sold along with its flagship, El Castillo Gold mine, to Argonaut Gold. Before switching his focus to the resource capital markets, Mr. Quinn started his career with the consumer products giant, Gillette Company, now Proctor and Gamble.

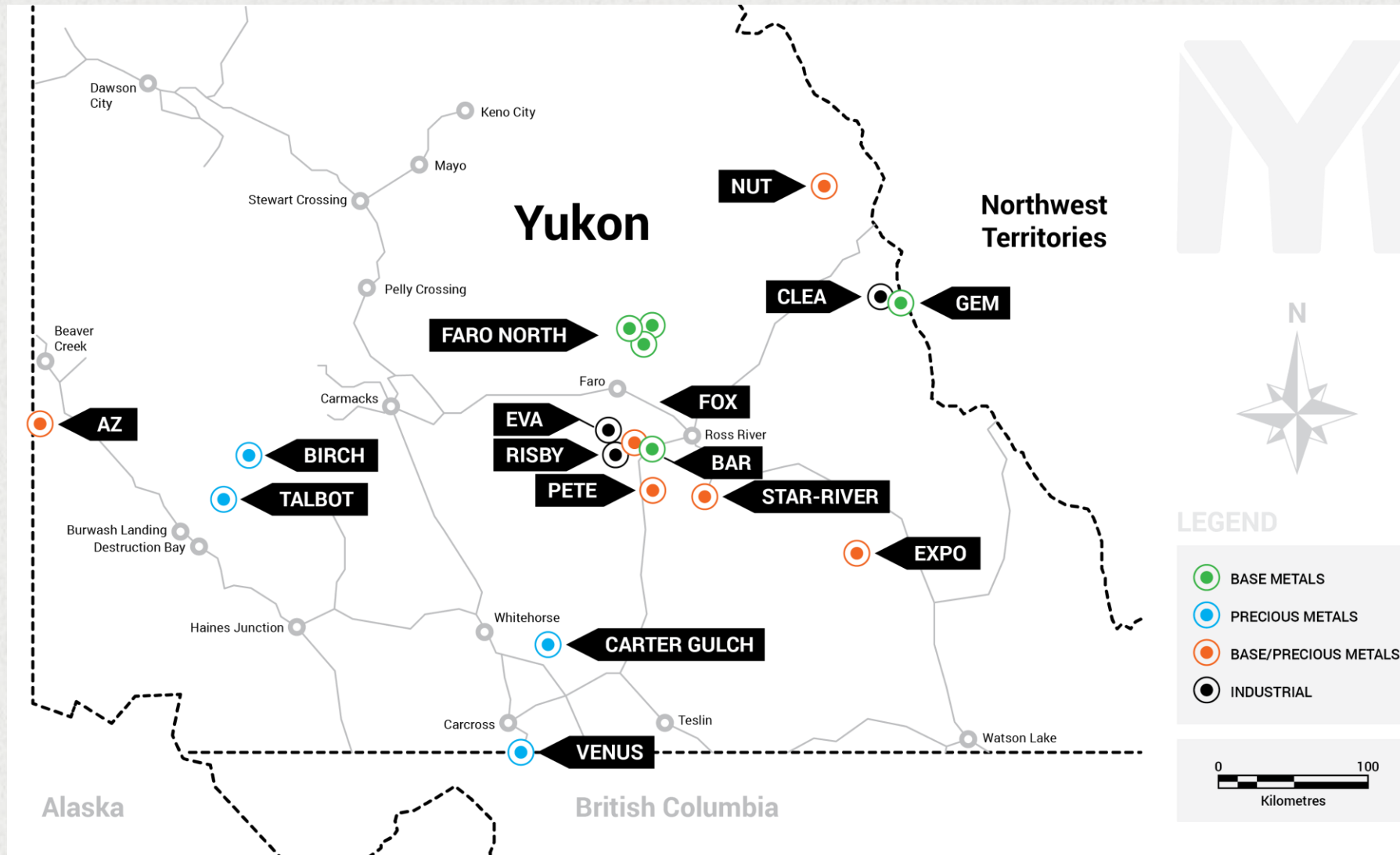


**Jim Coates**  
Exec. VP and Director

Mr. Coates has spent over two decades conducting mineral and scientific exploration across Canada and the world. Mr. Coates has completed MSc and PhD-level research in geography specialized in permafrost, with years spent in the field operating a drilling and geophysics company, as well as Yukon Geological Survey and independent exploration work in the Klondike Goldfields, which provided comprehensive exposure to many aspects of the mineral industry. A fascination with innovative design allowed Mr. Coates to optimize low-impact exploration methods both for clients and use on his personal mineral properties. Mr. Coates' experience growing up in small northern community continues to inform how the social license of resource projects affects their success.

# Property Details

## YUKON PROPERTIES



The Yukon is ranked 10<sup>th</sup> as the most prospective for mineral potential across global jurisdictions according to the Fraser Institute's 2023 Survey of Mining Companies and is host to a highly experienced and conscientious local workforce, created by a long culture of exploration coupled with deep respect for the land. Recent major discoveries with local roots such as Snowline Gold's (SGD) Rogue Project - Valley Discovery, demonstrate the Yukon's potential to generate fresh district-scale mining opportunities.

Yukon Metals owns the AZ, Bar, Birch, Carter Gulch, Clea, Eva, Expo, Faro North, Fox, Gem, Star River, Nut, Pete, Risby, Talbot claims, and the Venus claims and crown grants located in Yukon for a total land package of approximately 36,000 hectares.

# Key Property Details



## PROPERTIES

1. **BIRCH**
2. **STAR RIVER**
3. **AZ**



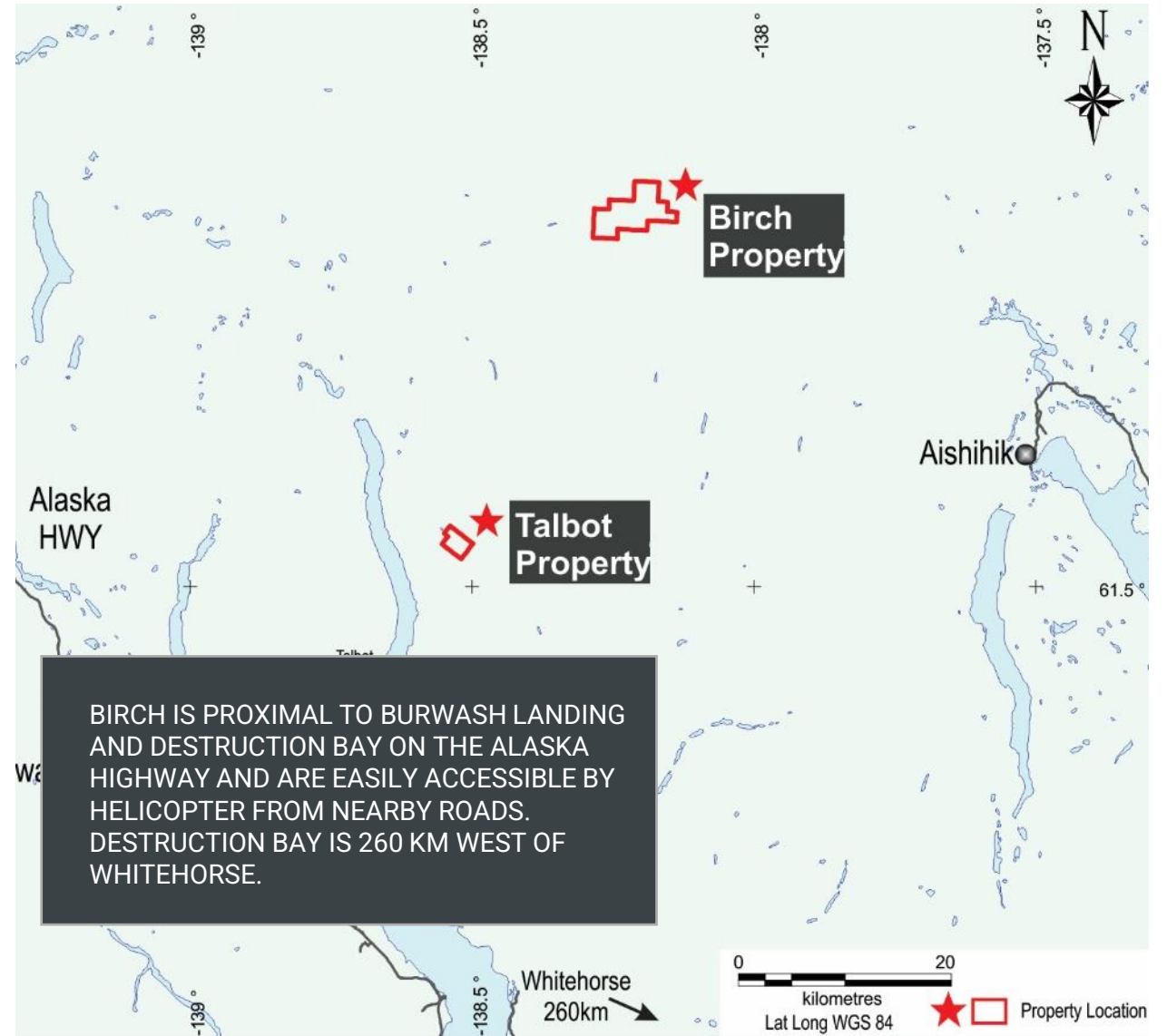
# BIRCH

Exploration work on the Birch property occurred in 2011-2012 with geochemical and geological mapping. Ryan Gold Corp. took 1271 grid soil samples on the property and reported a gold in soil anomaly area (Assessment Report 096342).

The target of historic exploration on the Talbot property has been for Cu-Mo-Au porphyry in the 1970s. Recent exploration in 2011 and 2012 (Ryan Gold Corp.) reported a **4 km gold in soil and talus fines anomaly and float quartzite rock sample #40868 assayed 3.67 g/t Au, 832 g/t Ag and 1800 g/t Cu. Float quartzite rock sample #40870 assayed 3.59 g/t Au and 2170 g/t Cu.** The regional plutonic rocks in this area and extending from Alaska to the southeast have numerous porphyry minifile occurrences noted in Yukon government databases and reports (Fonseca and Bradshaw, Open File 2005-5).

BIRCH AND TALBOT PROPERTY LOCATION, SOUTHEAST YUKON.

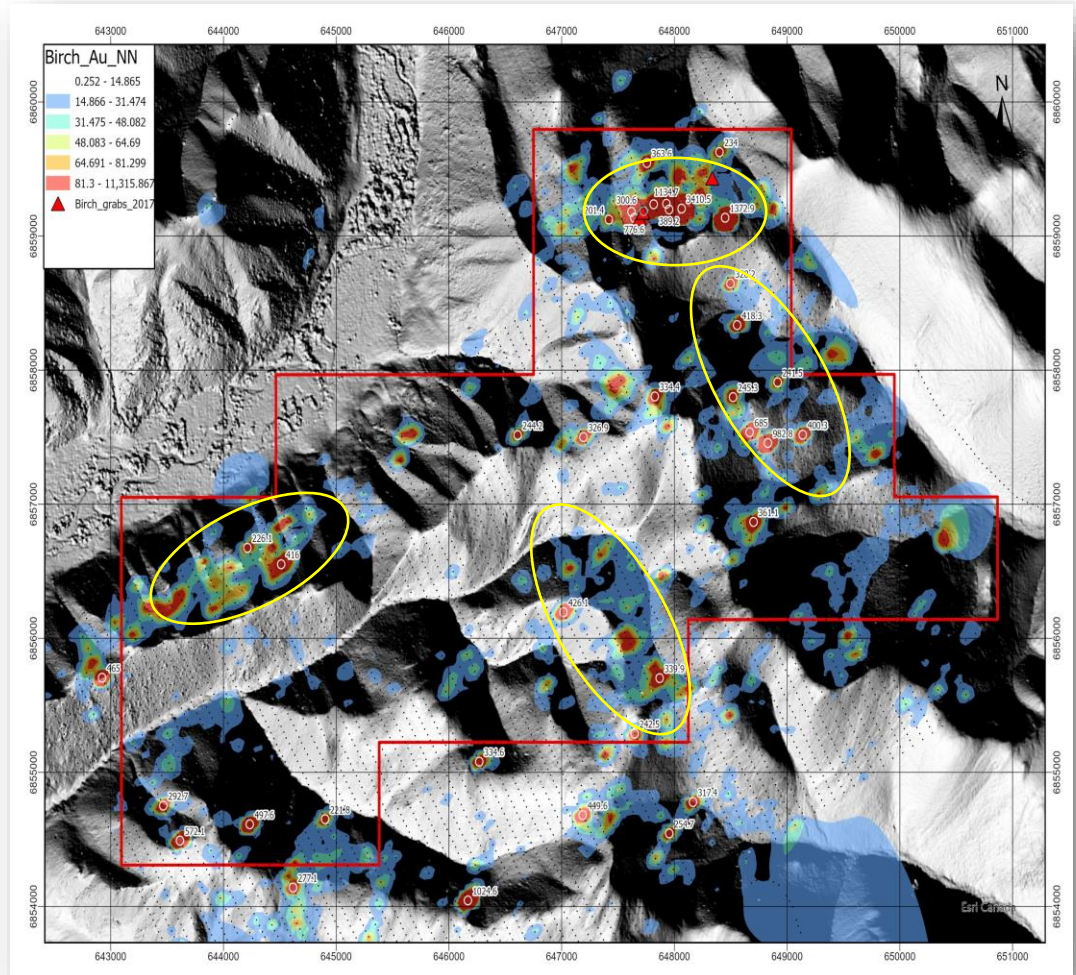
Source: Assessment report 096342



# BIRCH

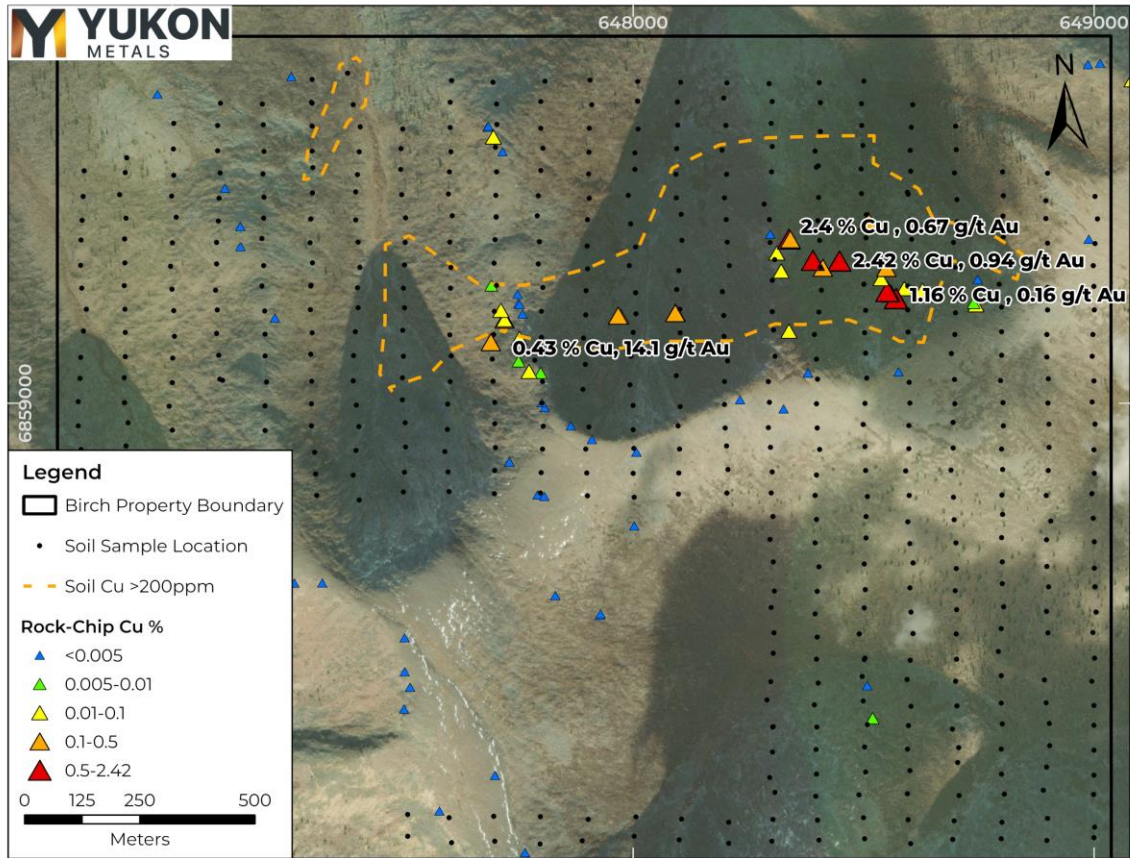
- Porphyry/Au-Cu-Mo target
- Extensive soil coverage from 2012 grid, no certificates available, varying extent of soil movement downslope.
- Large cohesive Au+As, Au+Cu and Mo anomalies.
- 2017 rock samples include 8-48 g/t Au and up to 2.5% Cu in north zone.
- 2024 Program
  - Confirmation soil samples over anomalous Au, Cu, Mo areas coincident with geophysical targets in north and central areas.
  - Structural mapping and rock sampling.
  - IP survey over northern claim block Cu-Au anomaly.

GEOPHYSICS REINTERPRETATION, AURORA 2024



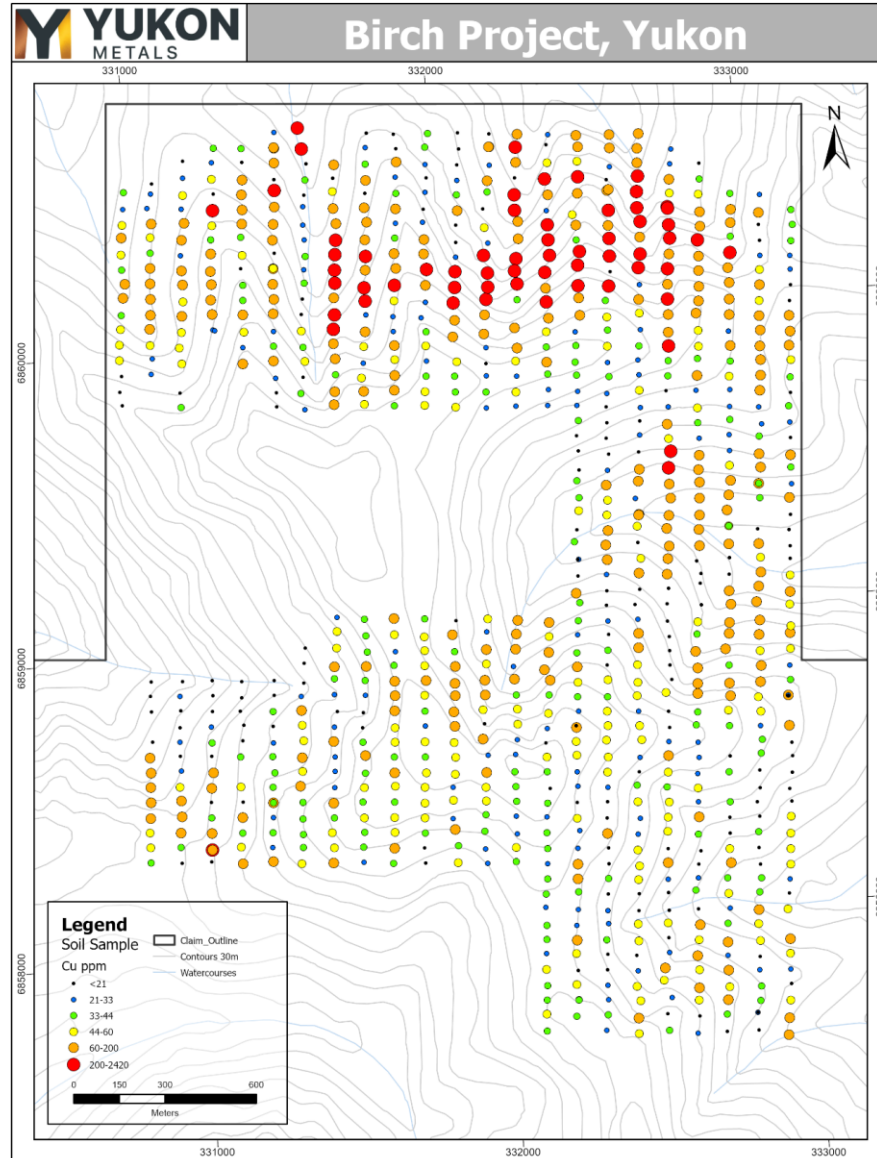
# BIRCH

- Fieldwork completed August-September
- Soil sampling, prospecting, IP program
- East-west trending zone.
- Up to 0.99 g/t Au & 2,310 ppm Cu over 1400 meters.

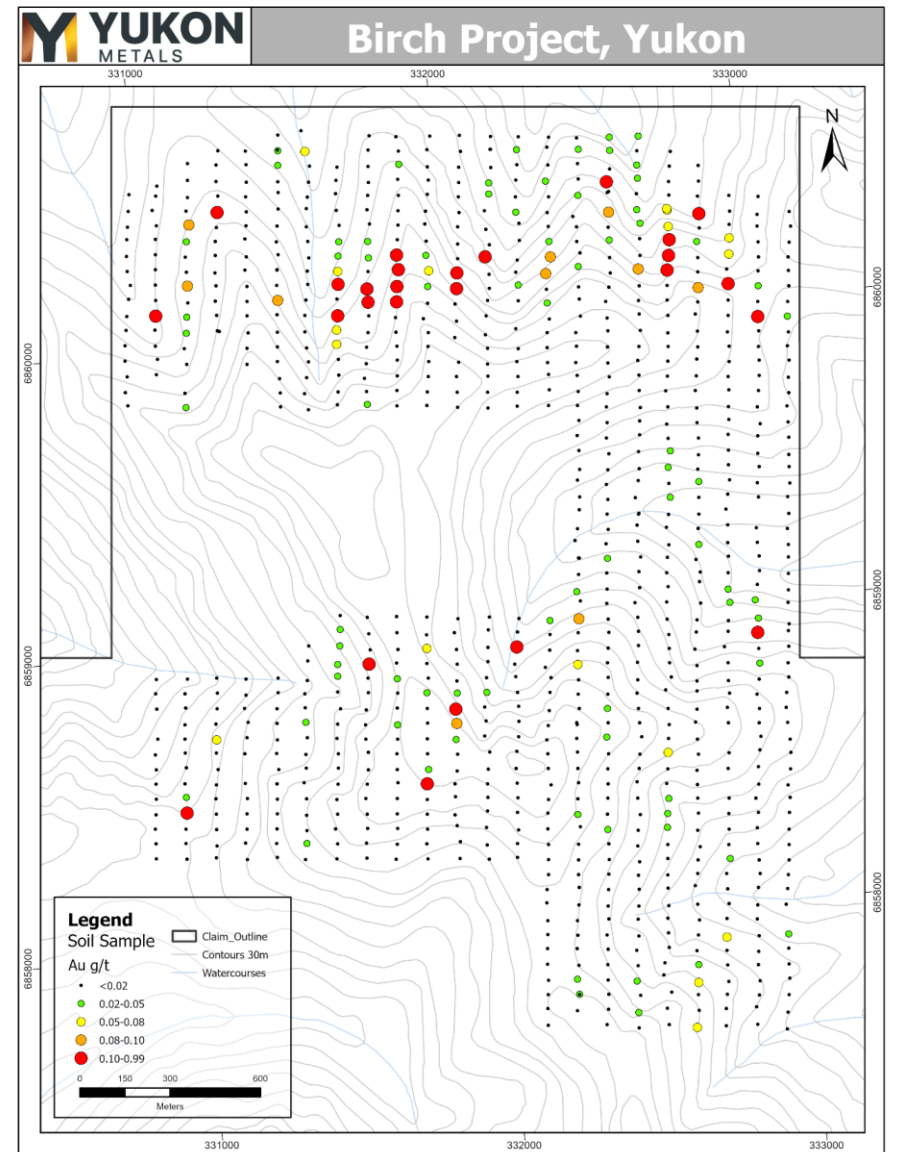


*Mineralized skarn horizon grading 14.1 g/t Au and 0.43% Cu.*

# BIRCH



Copper-in-soils at Birch 50m x 100m grid.

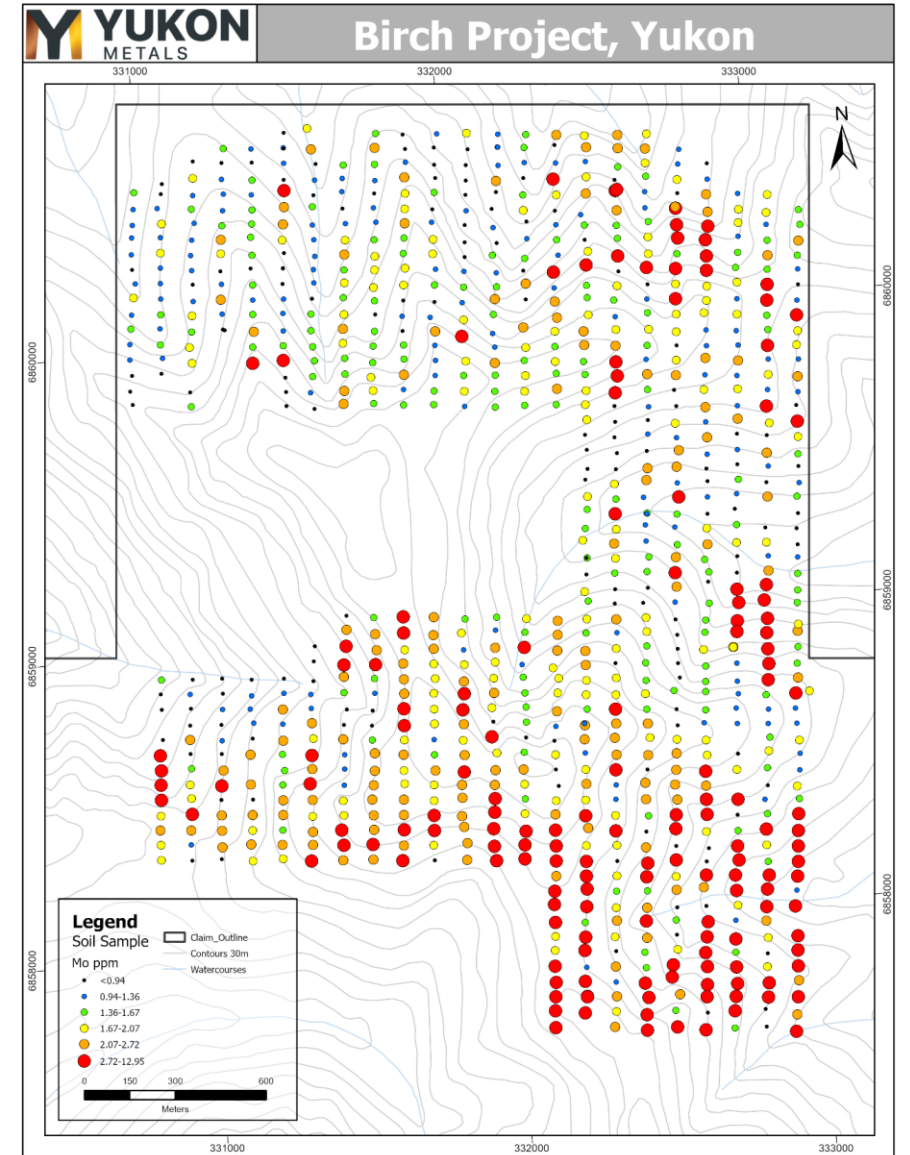


Gold-in-soils at Birch 50m x 100m grid.

# BIRCH



Mineralized skarn grading 2.42% Cu, 0.94 g/t Au and 42.1 g/t Ag.



Molybdenum-in-soils at Birch 50m x 100m grid.

# STAR-RIVER

Star River project is road accessible with many previously developed trails on the property. There is an all-weather airstrip nearby. The mineralization described to date on the project is polymetallic veins, carbonate replacement and mantos. There are 16 historical surface showings of mineralization on the property.

## 2024 Program

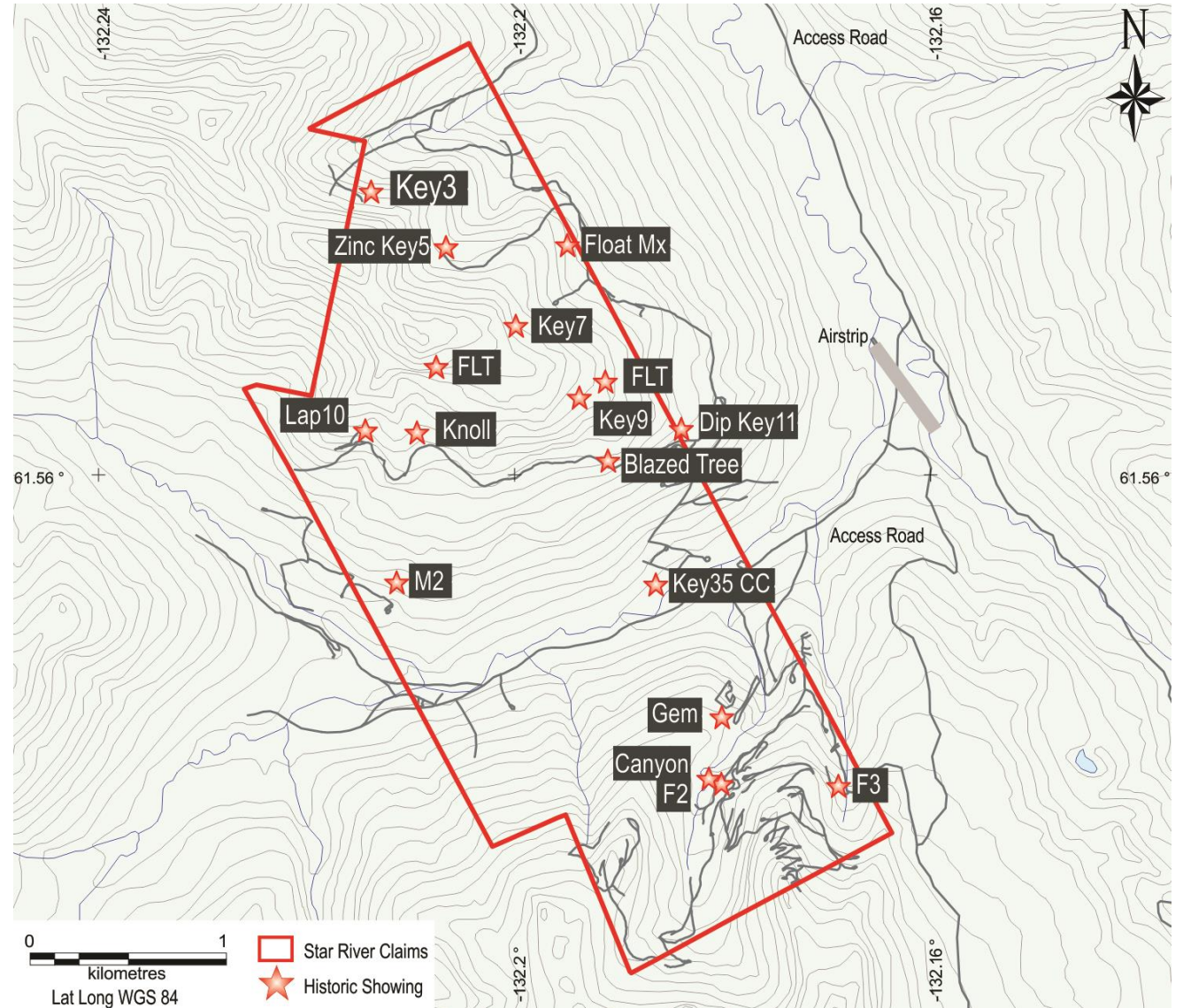
- Detailed drone-based LiDAR
- Gravity and TDEM ground geophysical surveys.
- Prospecting and structural mapping around historic showings and along geophysics lines.

Significant Au and Ag mineralization sampled around historic showings as well as uncovered in two new areas not previously recorded.

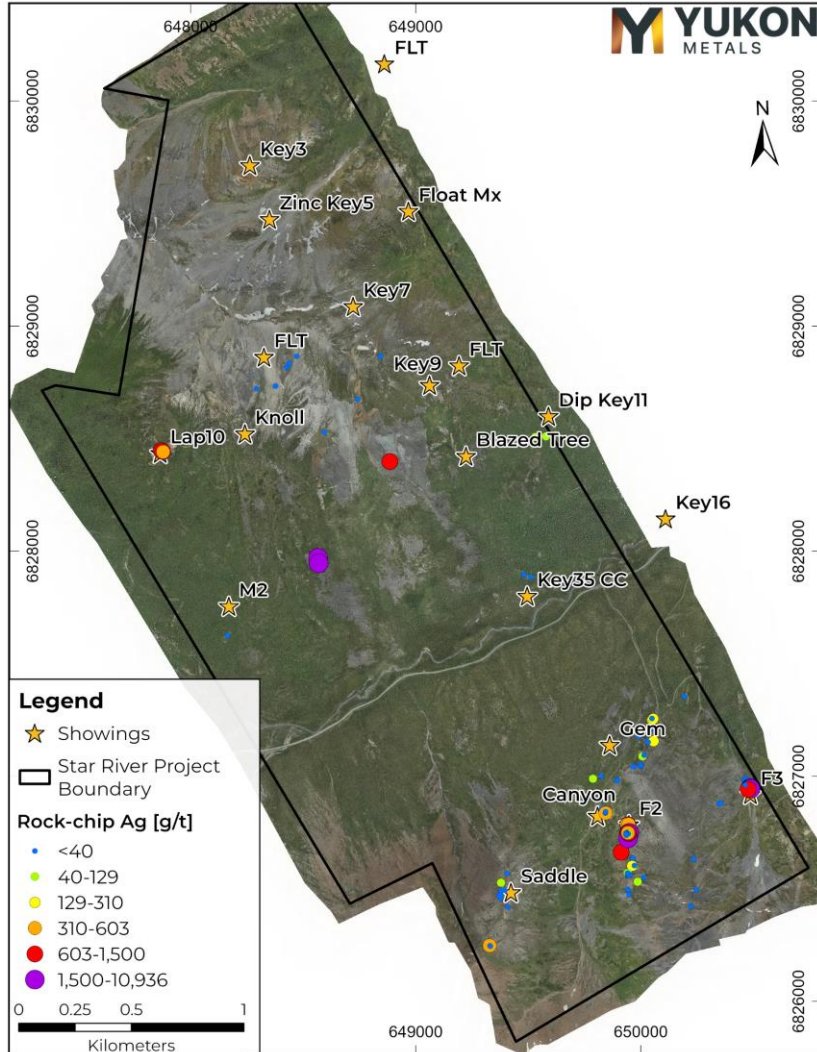
**YMC completed work at Star-River on a Class 1 notification permit.**

STAR RIVER PROPERTY WITH HISTORICAL SHOWINGS PREVIOUSLY REPORTED.

Source: Assessment report 019895 & 019897



# STAR-RIVER



Location of **silver** rock samples in relation to historic showings

## Silver and Zinc Highlights

### Ag Highlights

- 10,936 g/t Ag
- 4,210 g/t Ag
- 1,940 g/t Ag
- 1,935 g/t Ag
- 1,790 g/t Ag

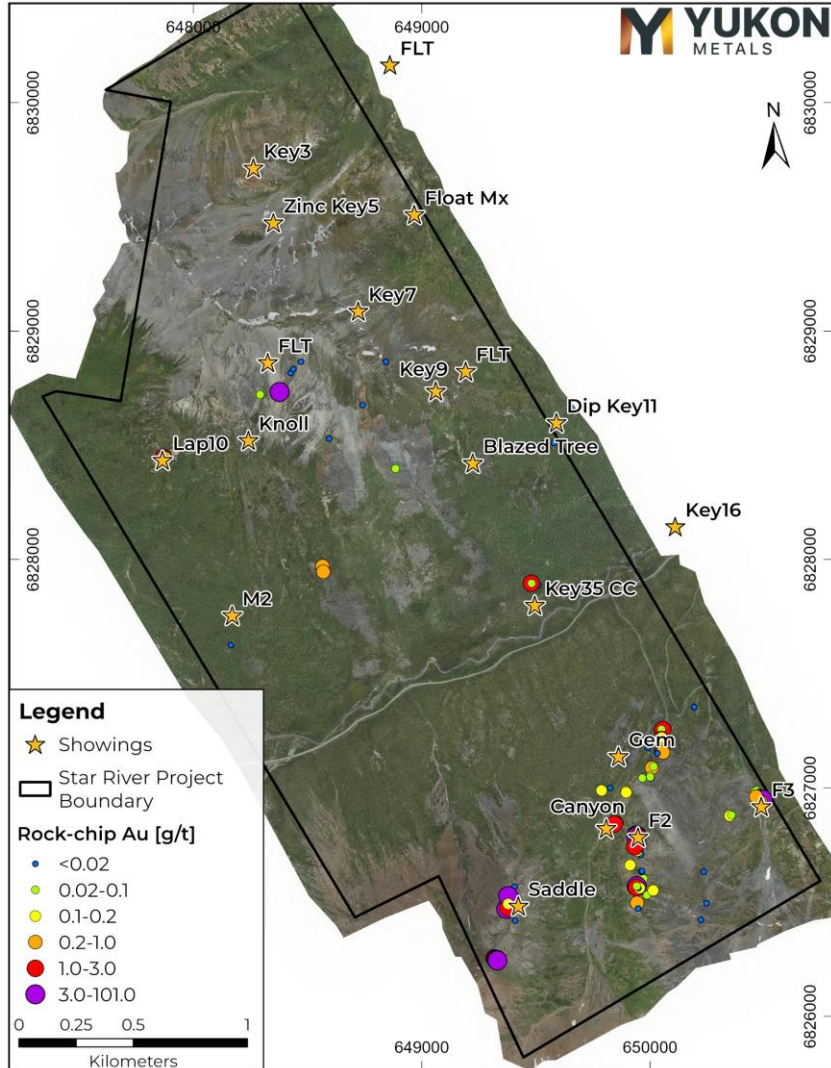
### Zn Highlights

- 10.8% Zn
- 2.59% Zn
- 0.89% Zn
- 0.41% Zn
- 0.40% Zn



10,936 g/t Ag in galena-siderite

# STAR-RIVER



Location of **gold** rock samples in relation to historic showings

## Gold and Copper Highlights

### Au Highlights

- 101 g/t Au
- 9.74 g/t Au
- 9.35 g/t Au
- 6.93 g/t Au
- 6.82 g/t Au

### Cu Highlights

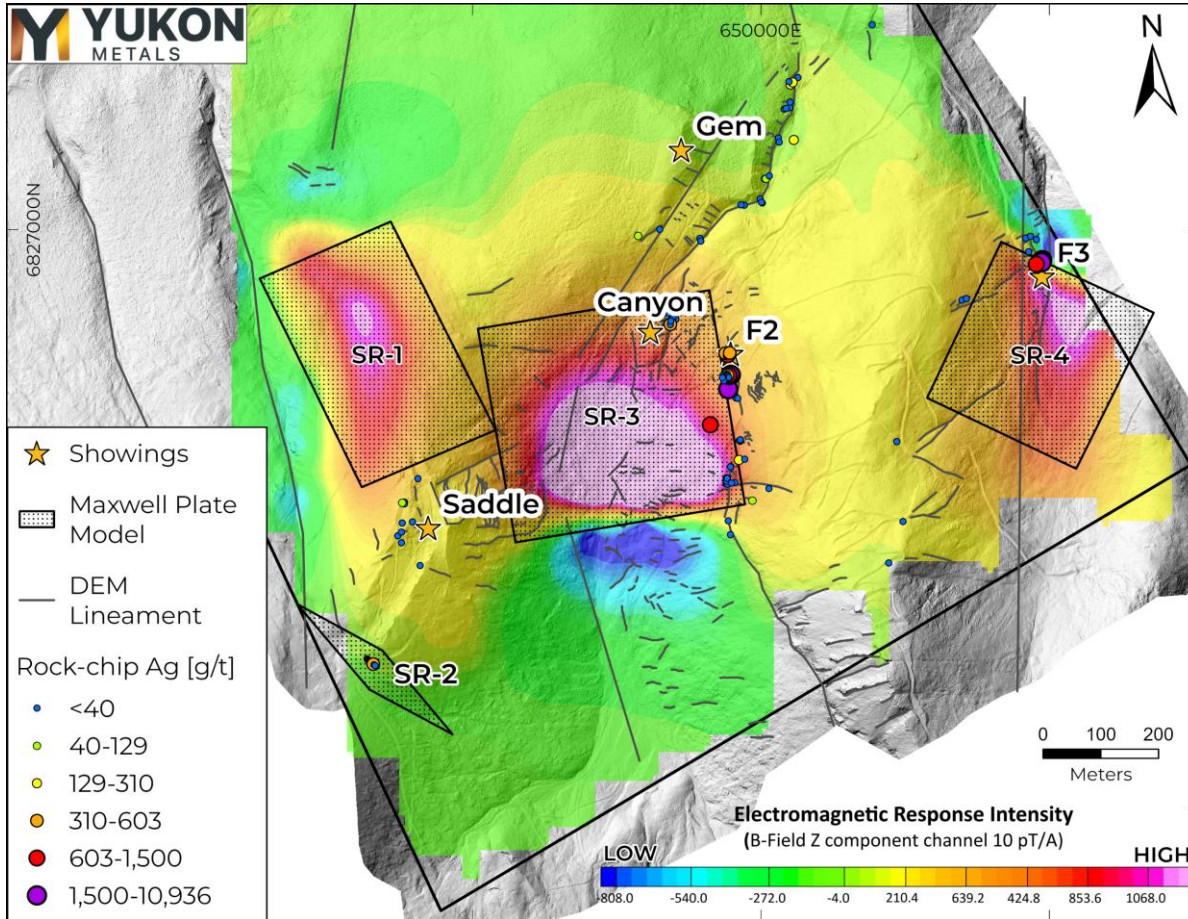
- 0.87% Cu
- 0.73% Cu
- 0.67% Cu
- 0.40% Cu
- 0.35% Cu



101 g/t Au in highly oxidized *arsenopyrite*



# STAR-RIVER



Map of vertical EM response (B-field Z-component) with overlaid target plates, DEM lineaments, and **Ag g/t** in prospecting samples.

## Silver and Zinc Highlights

### Ag Highlights

- 10,936 g/t Ag
- 4,210 g/t Ag
- 1,940 g/t Ag
- 1,935 g/t Ag
- 1,790 g/t Ag

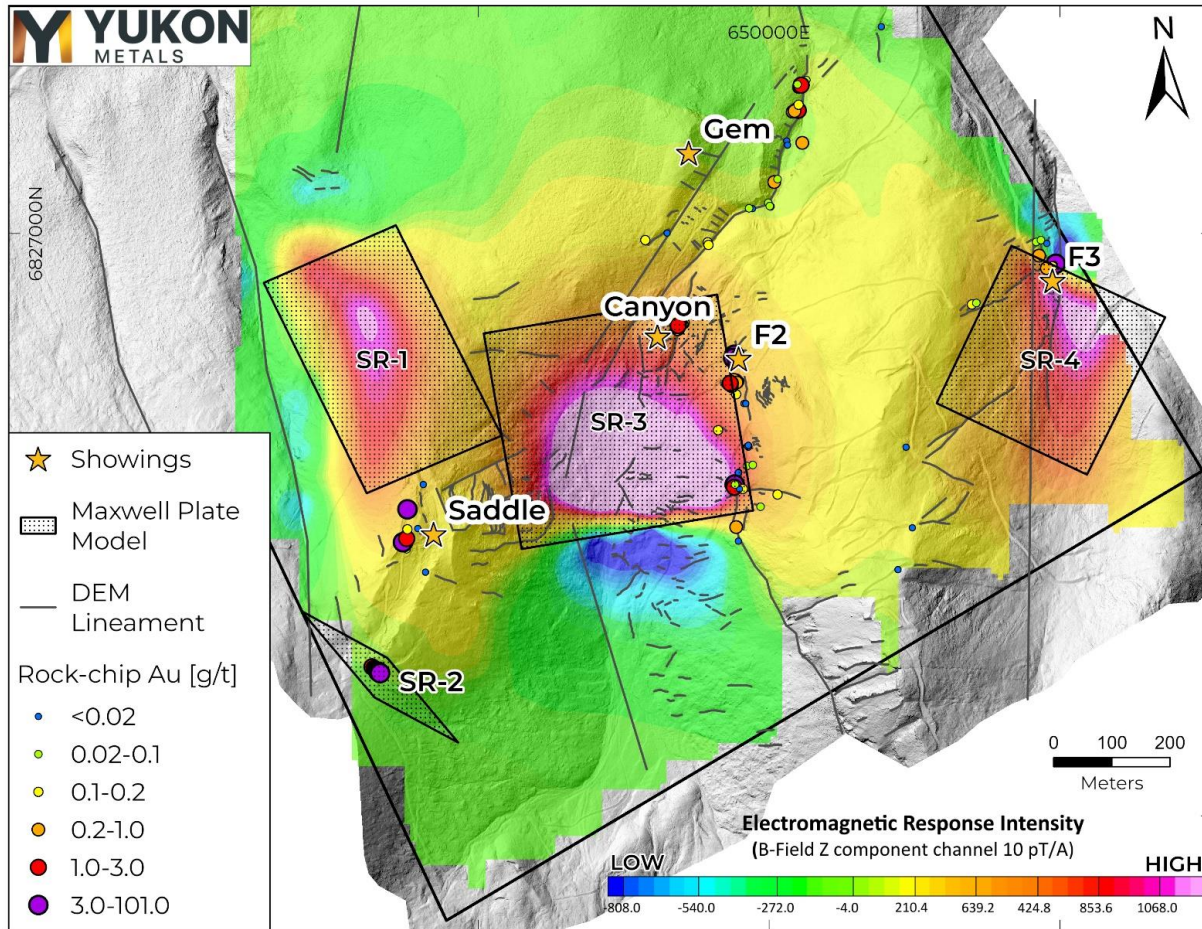
### Zn Highlights

- 10.8% Zn
- 2.59% Zn
- 0.89% Zn
- 0.41% Zn
- 0.40% Zn



10,936 g/t Ag in galena-siderite

# STAR-RIVER



Map of vertical EM response (B-field Z-component) with overlaid target plates, DEM lineaments, and **Au g/t** in prospecting samples.

## Gold and Copper Highlights

### Au Highlights

- 101 g/t Au
- 9.74 g/t Au
- 9.35 g/t Au
- 6.93 g/t Au
- 6.82 g/t Au

### Cu Highlights

- 0.87% Cu
- 0.73% Cu
- 0.67% Cu
- 0.40% Cu
- 0.35% Cu



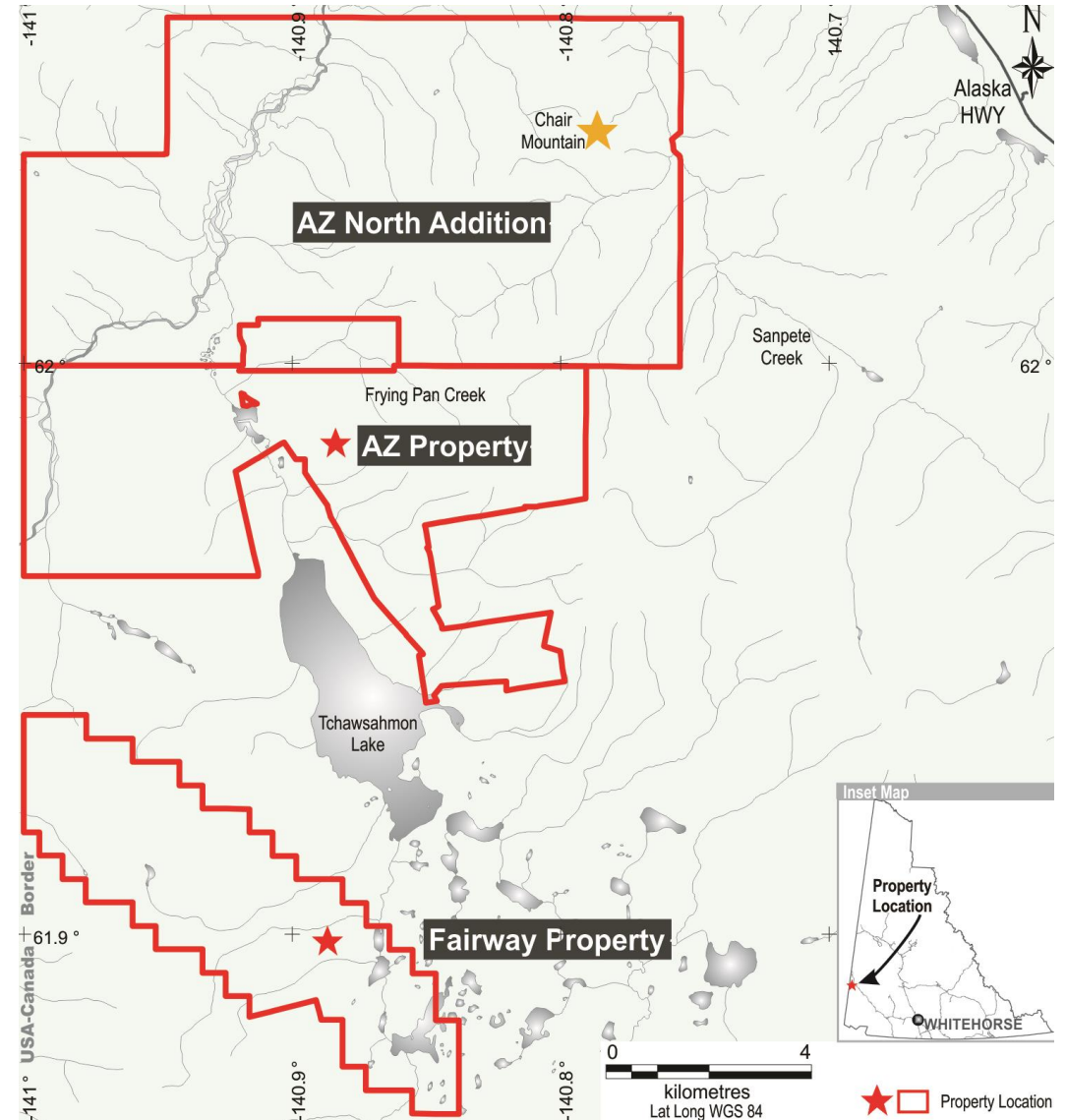
101 g/t Au in highly oxidized *arsenopyrite*

# AZ

Initial exploration efforts discovered copper and gold mineralization in skarned limestone and greenstone on the property. The source of auriferous chalcopyrite-bearing magnetite-epidote garnet skarn occurs in float on the property and has not been fully explored. **Rock float assays returned an average of 10% Cu, 126 g/t Ag, and 7.08 g/t Au from four samples in 1993.** Much of the exploration work requires follow-up compilation and new exploration to confirm older results and expand on the historical soil sampling and ground geophysics that was previously completed on the property in the 1990s.

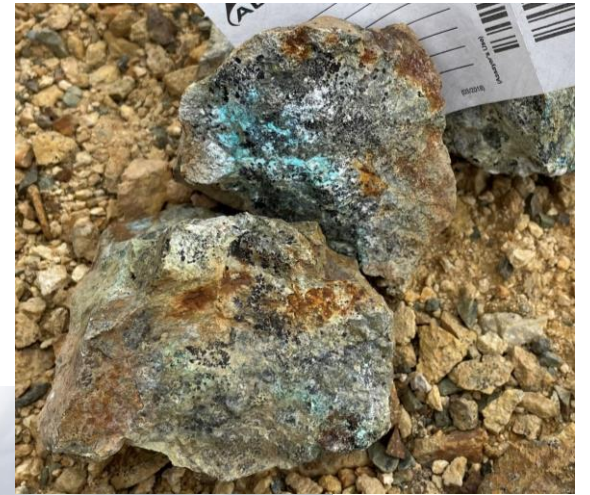
AZ PROPERTY INCLUDING THE NEW AZ NORTH ADDITION.

Source: Assessment report 093101



# AZ

- Multiple mineralization styles observed, skarn and porphyry potential, although minimally explored.
- Historical placer workings on Sanpete, Gold, and Pan creeks.
- Historical trail from Alaska Hwy to Chair Mtn.
- 6km from the Hwy to eastern edge of claim block.
- Airborne geophysics or extensive flying limited to June 1-July 31.
- 2024 Program
  - Prospecting and mapping program over Chair Mtn.
  - Fly camp based and hike out.



AZ PROPERTY INCLUDING THE NEW AZ NORTH ADDITION.

# SHARE CAPITAL

<u>Issued &amp; Outstanding</u>	<u>89.1M shares</u>
Options	4.9M options @ CDN\$0.45
Warrants	8.9M warrants @ CDN\$0.60
Fully Diluted	102.9M shares
Market Cap	\$40M
<u>Volume</u>	<u>180k shares / day</u>

Cash: CDN\$9 million

## Shareholders

Insiders 31%

Keith Neumeyer 9%

Commodity Capital 5%

Crescat 3%

High Net Worth & Retail 52%

## Critical Metals Project Breakdown

PROJECT	METALS
Star River	Zn-Pb-Ag (CRD/VMS) Au (Mantos)
AZ	Cu-Au (Porphyry/Skarn)
Venus	Au-Ag-Zn-Pb-As-Sb (Vein)
Nut	Au-Cu-Ag-Zn-Pb-W-Bi (Skarn/RIRG)
Carter Gulch	Au-Cu (Orogenic)
Pete	Ag-Pb-Zn (Vein)
Expo	Zn-Pb-Ag-Au-Cu-Ba (VMS)
Risby	W-Bi (Skarn)
Clea	W-Bi-Cu-Mo-Sn (Skarn)
Fox	Zn-Pb-Cu-Au-Ag (VMS)
Eva	W (Skarn)
Birch	Cu-Au-Mo (Porphyry/Skarn)
Arm	Au-Cu (Porphyry/Skarn)
Bar	Ba
Gem	Au-Bi (RIRG)
Faro North	Zn-Pb-Ag (SEDEX?)
BP	Zn-Ag (SEDEX?)



**Rory Quinn**  
President & CEO, Director  
roryquinn@yukonmetals.com

**Jim Coates**  
Exec. VP, Director  
jimcoates@yukonmetals.com

1000-1055 W.Hastings St.  
Vancouver BC V6E 2E9

info@yukonmetals.com

yukonmetals.com

