



RELEVANT

GOLD

TSXV:RGC
OTCQB:RGCCF

DEFINING A NEW MEGA-DISTRICT IN WYOMING WITH
ARBITRI SCALE POTENTIAL





CAUTIONARY STATEMENT

This presentation contains certain statements that constitute forward looking information within the meaning of applicable securities laws. These statements relate to future events of Relevant Gold Corp. (“Relevant” or “the Company”). Any statements that express or involve discussions with respect to predictions, expectations, beliefs, plans, projections, objectives, assumptions or future events or performance (often, but not always, using words or phrases such as “seek”, “anticipate”, “plan”, “continue”, “estimate”, “expect”, “forecast”, “may”, “will”, “project”, “predict”, “potential”, “targeting”, “intend”, “could”, “might”, “should”, “believe”, “outlook” and similar expressions) are not statements of historical fact and may be forward looking information. Forward looking information in this presentation includes, but is not limited to, statements with respect to successfully consolidating further land packages, Relevant’s ability to raise sufficient capital to fund exploration programs and its obligations under property agreements, seek a listing on a recognized stock exchange, drilling plans, financing success, discovery and production of minerals, metal prices and currency exchange rates, timing of technical reports and drill results, corporate and technical objectives, permitting success and relationships with stakeholders.

Forward looking information involves known and unknown risks, uncertainties and other factors which may cause the actual results, performance or achievements of the Company to be materially different from any future results, performance or achievements expressed or implied by the forward-looking information. Such risks include, among others, the inherent risk of the mining industry; adverse economic and market developments; the risk that the Company will not be successful in completing additional acquisitions; risks relating to the estimation of mineral resources; the possibility that the Company’s estimated burn rate may be higher than anticipated; risks of unexpected cost increases; risks of labour shortages; risks relating to exploration and development activities; risks relating to future prices of mineral resources; risks related to work site accidents, risks related to geological uncertainties and variations; risks related to government and community support of the company’s projects; risks related to global pandemics and other risks related to the mining industry. The Company believes that the expectations reflected in such forward-looking information are reasonable, but no assurance can be given that these expectations will prove to be correct and such forward-looking information should not be unduly relied upon. These statements speak only as of the date of this presentation. The Company does not intend, and does not assume any obligation, to update any forward-looking information except as required by law.

This document does not constitute an offer to sell, or a solicitation of an offer to buy, securities of the Company in Canada, the United States or any other jurisdiction Any such offer to sell or solicitation of an offer to buy the securities described herein or during the presentation will be made only pursuant to subscription documentation between the Company and prospective purchasers. Any such offering will be made in reliance upon exemptions from the prospectus and registration requirements under applicable securities laws, pursuant to a subscription agreement to be entered into by the Company and prospective investors.

The scientific and technical contents of this presentation have been approved by Mr. Brian C. Lentz, CPG, Chief Exploration Officer of the Company, who is a “Qualified Person” as defined by Canadian National Instrument 43-101 (Standards of Disclosure for Mineral Projects). Mr. Lentz is not independent of the Company.





OPPORTUNITY OF SCALE

The Abitibi Gold Belts; Prolific Orogenic Shear Zone Hosted Gold Deposits, > 200 Moz

Orogenic gold accounts for 1/3 of the world's gold production. The Abitibi is the most productive orogenic gold system on

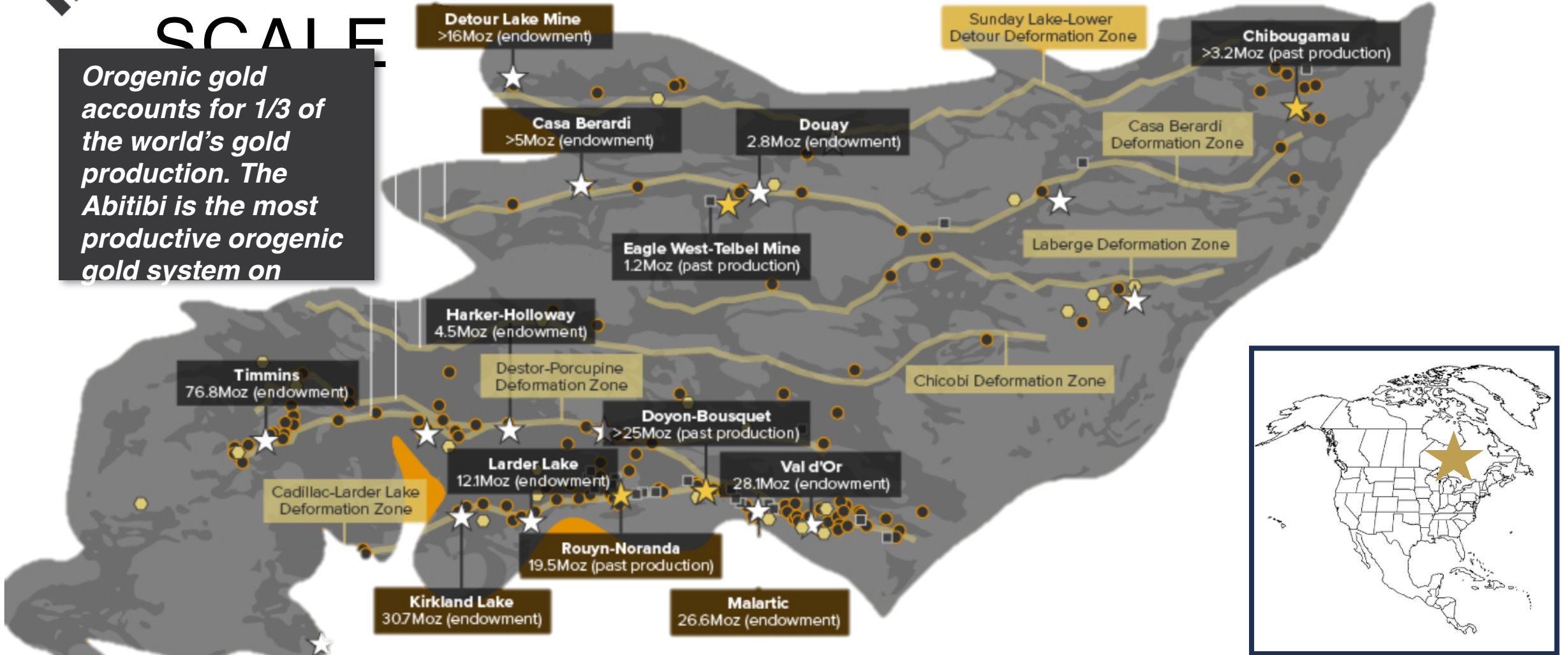


Figure Source: Modified from Visual Capitalist, Canada's Gold Exploration Frontier: The Abitibi Greenstone Belt, May 19, 2021



*“Now imagine if you could buy a ticket on the potential to **discover the next Abitibi** — virtually the entire belt — in the mining-friendly jurisdiction of **Wyoming**. That’s exactly the potential that Relevant Gold is offering investors.”*

GoldNewsletter
Vol. LI April 2024

Public domain photo. Gold mine, Lamaque, Abitibi, Quebec 1920



RELEVANT GOLD
TSXV:RGC | OTCQB:RGCCF



A UNIQUE DISCOVERY OPPORTUNITY IN
THE AMERICAN ABITIBI

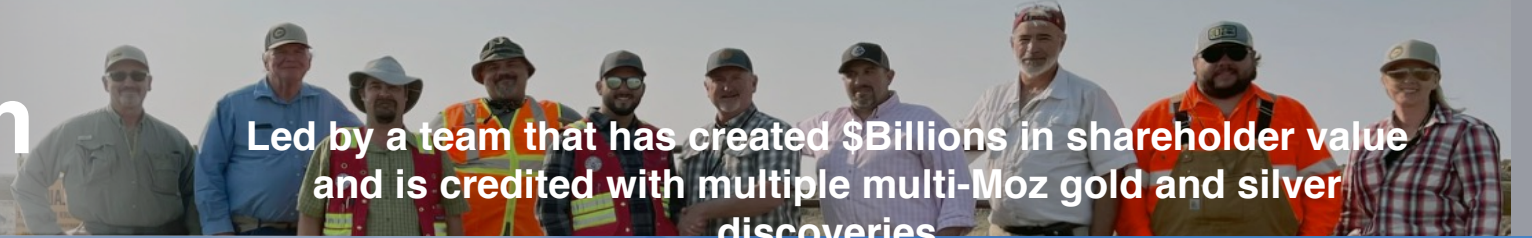




DEVELOPING THE AMERICAN

ABITIBI

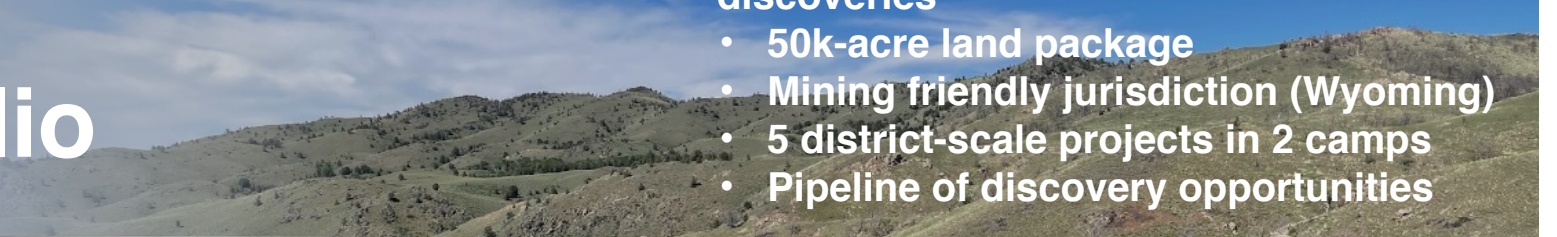
World Class Team



Led by a team that has created \$Billions in shareholder value and is credited with multiple multi-Moz gold and silver discoveries

- 50k-acre land package
- Mining friendly jurisdiction (Wyoming)
- 5 district-scale projects in 2 camps
- Pipeline of discovery opportunities

Belt-Scale Portfolio



STRONG CORPORATE STRUCTURE

~75M shares outstanding. Key shareholders include:



Mr. Rob McEwen

Exploration AT SCALE



- 3 exploration permits
- 14 district-scale targets
- 2 drill-proven orogenic systems
- High-grade gold + silver + copper



MEET THE TEAM

BOARD OF DIRECTORS



**INDEPENDENT
DIRECTOR**

Dr. Peter Megaw, PhD.
40+ Years Experience
PhD., Economic Geology

Cofounder, MAG Silver Corp.



**INDEPENDENT
DIRECTOR**

Sarah Weber
20+ Years Experience
P. Geo / MBA

CEO, C3 Alliance Corp.



**INDEPENDENT
DIRECTOR**

Ronald E. Farrell
40+ Years Experience
M.Sc. Economic Geology

Cofounder, Auex Ventures, Inc.



DIRECTOR, CEO

Rob Bergmann
15+ Years Experience
B.Sc. Geology

Founder, Relevant Gold Corp.



DIRECTOR, CXO

Brian Lentz
15+ Years Experience
B.Sc. Geology / P. Geo

Founder, Relevant Gold Corp.

MANAGEMENT



Mahesh Liyanage
RGC CFO



Sam Siebenaler
VP Corporate Dev.



Kristopher Jensen
Corporate Comms. Mgr.



Dr. Dean Peterson, PhD
Technical Advisor



Dr. Thomas Campbell, PhD
Technical Advisor



Dr. Kevin Chamberlain, PhD
Technical Advisor

FULL BIOS CAN BE FOUND AT RELEVANTGOLDCORP.COM

RELEVANT GOLD
TSX:RGC | OTCQB:RGCCF



CORPORATE STRUCTURE

SHARE BREAKDOWN:

Issued and Outstanding: 74,672,526

Reserved for Issuance: 27,336,890*

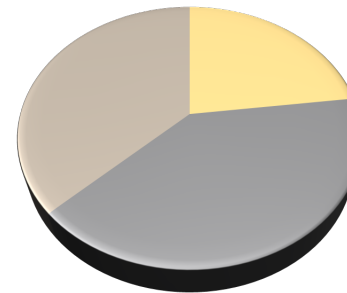
* Includes:

Founder's Warrants:	12,000,000 @ \$0.13	Expire 2025	\$1,560,000
Management/Board Options:	3,750,000 @ \$0.35	Expire 2027	\$1,312,500
General Warrants:	11,586,890 @ \$0.35	Expire 2026	\$4,055,411

Public Float: 53.05%

MAJOR SHAREHOLDERS: (as of 7/9/2024)

- + Management and Insiders (>20%)
- + Kinross Gold
- + New Gold Inc.
- + Mr. Rob McEwen
- + Ultra High Net Worth Individuals
- + Retail Investors



Approximate Ownership Breakdown

- Management and Insiders
- Major Holders
- Retail Investors





TARGET: OROGENIC GOLD

HOW OROGENIC GOLD IS FORMED

Orogenic gold deposits account for about 1/3 of the world's gold production. Here is how they formed:

1 SOURCE: Metal enriched source fluid deep in the earth's subsurface

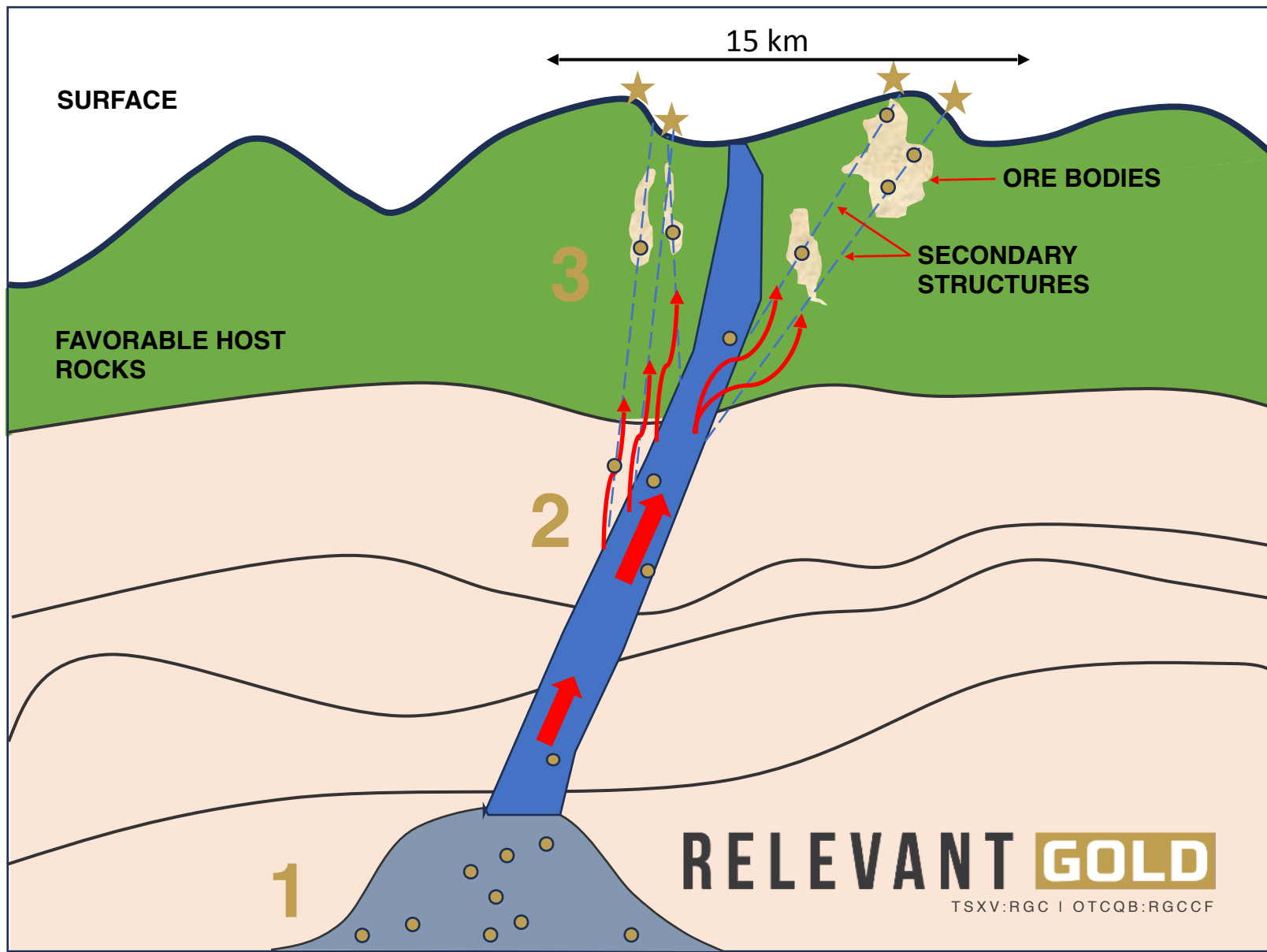
2 PATHWAY: Major, deep rooted fault structures formed, creating pathways that allowed these gold enriched fluids to rise

3 TRAP: Gold-bearing fluids become trapped in secondary structures of favorable host rocks, allowing the gold to precipitate out.

98

%

of all the orogenic gold produced in the Timmins, Kirkland Lake, and Hemlo camps in the Abitibi (106.25 M oz) was found in secondary structures within 7 km of the primary fault structure (i.e. Destor Porcupine Fault).



RELEVANT GOLD

TSXV:RGC | OTCQB:RGCCF

1. Frimmel, H. E. Earth's continental crustal gold endowment. *Earth Planet. Sci. Lett.* 267, 45–55 (2008)

2. Peterson, Dean. Ph.D. Dissertation, 2001



TSXV:RGC
OTCQB:RGCCF

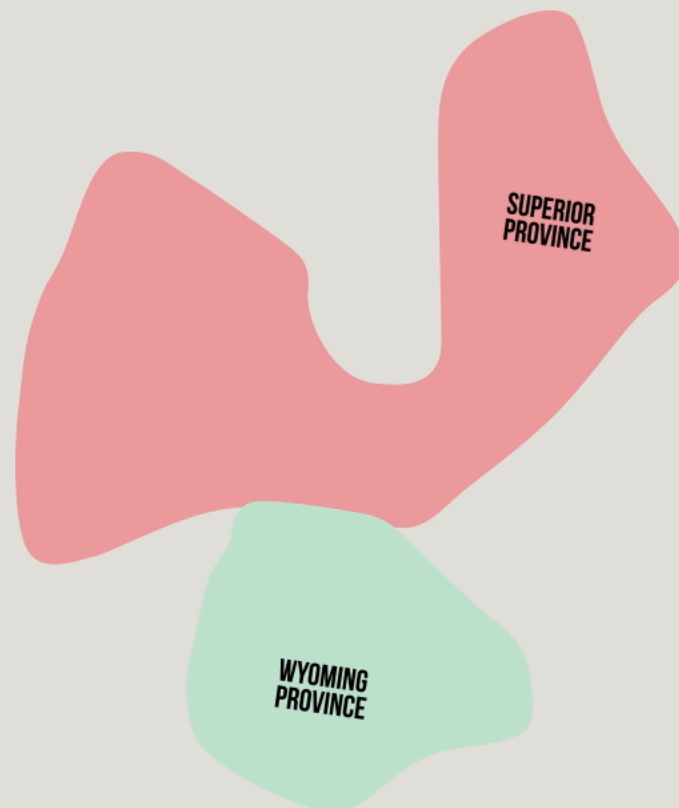


**Wyoming and Abitibi Were Connected When Gold Formed
~2.7 – 2.6 Billion Years Ago**



RELEVANT
GOLD

TSXV:RGC
OTCQB:RGCCF





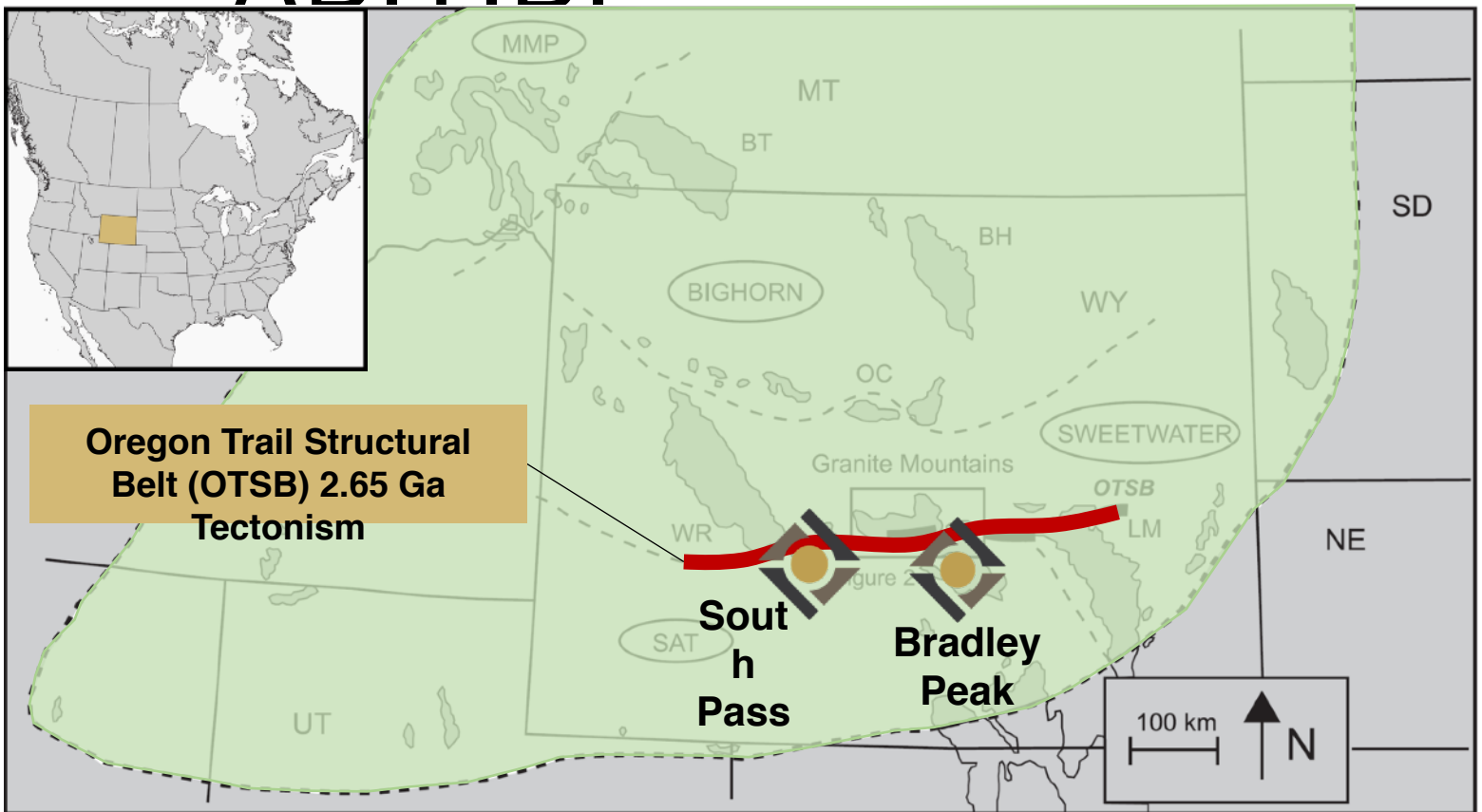
WYOMING

THE AMERICAN ABITIBI



RELEVANT GOLD CAMPS NEW

ABITIBI



*Figure modified from Chamberlain et. al. 2006

TECHNICAL SUMMARY

- ◆ Craton scale structural zone
- ◆ Same age and orientation as belts in Superior Province
 - ◆ Destor Porcupine, Cadillac & Larder Lake
- ◆ Cross-cutting rock types known to host Orogenic and VMS style mineralization
- ◆ Historic gold mines throughout the OTSB across the Wyoming Province

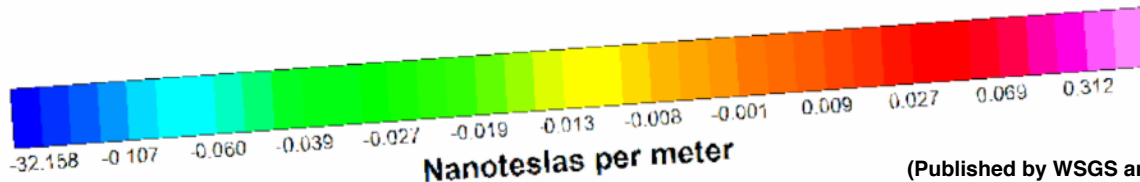
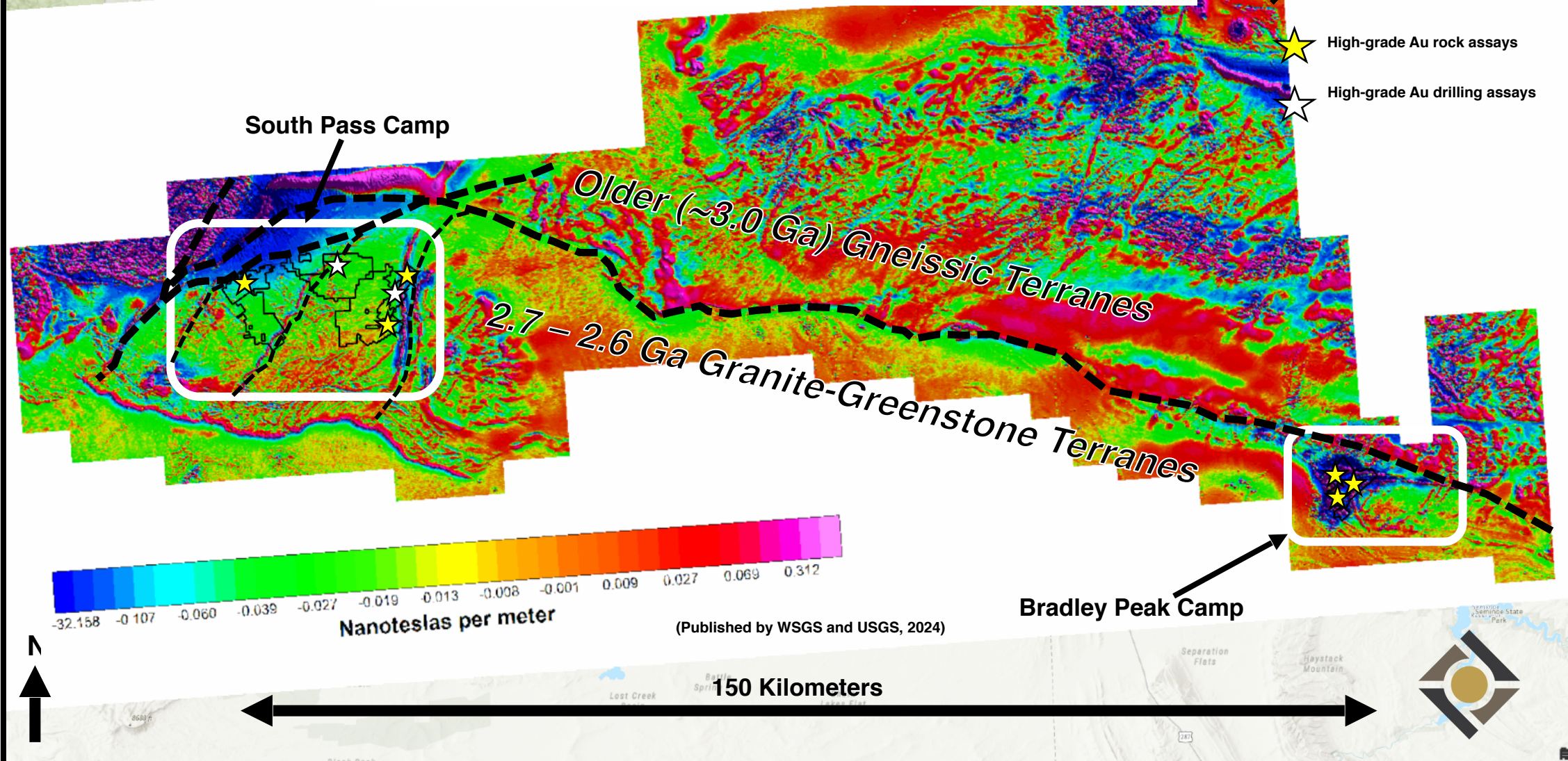


Airborne Magnetics – Vertical Derivative

Relevant Gold Regional Interpretation

Legend

- Major Archean Structure
- High-grade Au rock assays
- High-grade Au drilling assays



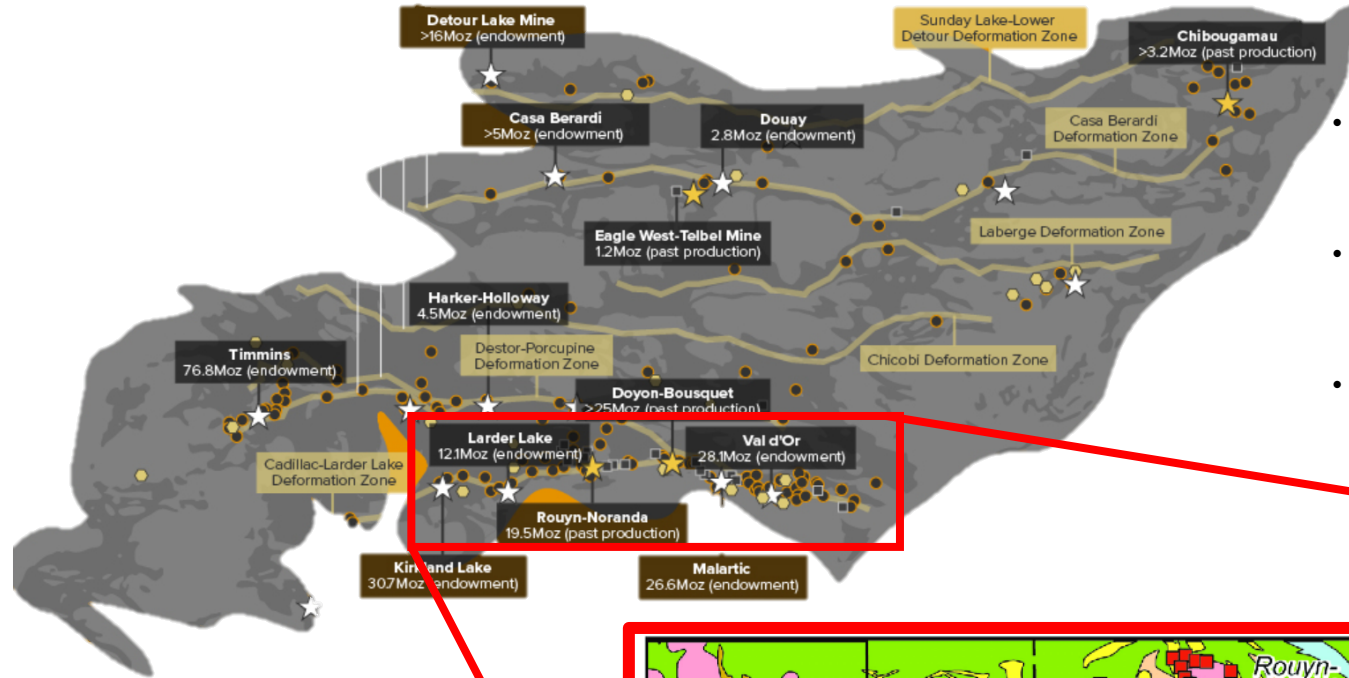
(Published by WSGS and USGS, 2024)

150 Kilometers





BELT SCALE OPPORTUNITY



- New Wyoming magnetics survey confirms Archean structure comparable in size and scale to the Cadillac-Larder Lake Deformation Zone
- Gold mineralization commonly occurs in secondary structures within 7 km of the major structures in the Abitibi and Wyoming.
- ***The magnetic data confirms we have some of the best discovery opportunities on Wyoming's main street!***

Figure Source: Modified from Visual Capitalist, Canada's Gold Exploration Frontier: The Abitibi Greenstone Belt, May 19, 2021

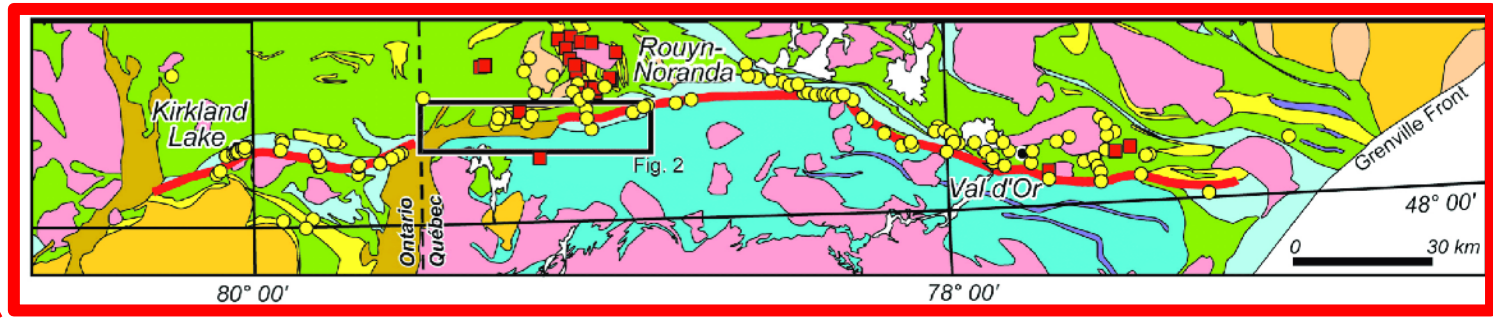


Figure Source: Rabeau et. al., 2011, Modified from Gold Potential of a Hidden Archean Fault Zone: The Case of the Cadillac-Larder Lake Fault, VL - 19, DO - 10.2113/gsemg.19.3-4.99, JO - Exploration and Mining Geology ER





PORTFOLIO AT A GLANCE

2 gold camps, 5 district-scale projects, 12+ high-grade targets

BRADLEY PEAK CAMP



10,800 acres of BLM and state lease claims located in the Seminoe Mountains in central Wyoming

- Highlights:
- **>21 km** of potentially mineralized shear zones
 - Identified **3 distinct target zones** (Kortes, Apex, and Deserted Treasure)
 - **7 high-grade targets** identified
 - **46.8 g/t Au, 2.44% Cu** (RGC 2024 samples)
 - **5.3 g/t Au, 107 g/t Ag, and 6.25% Cu** (RGC 2023 samples)
 - **6.5 g/t Au, 3.7% Cu** (RGC historic sample)
 - **89 g/t Au, 5.8% Cu** (historic samples)

SOUTH PASS CAMP



9,600 acres of BLM claims including ~1,000 acres of patent/private

- Highlights:
- **~3,500m** drill program in 2022
 - **54%** of holes returned anomalous gold
 - Top intercept: **83.8 g/t Au** over 1 m
 - Rock chip assays up to **160 g/t Au** from trench
 - Abundant coarse visible gold
 - GBSZ extended to **~2km strike**
 - **2 high-grade gold targets** identified



14,000 acres of BLM claims including 58 acres of patented claims at Hidden Hand

- Highlights:
- **1,560 m** drill program (2023) cut gold in 10 of 11 holes
 - **1,690 oz/ton Au** (historic sample)
 - **62 g/t Au, 8.1% Cu** (RGC sample)
 - **> 10 km** of potentially mineralized shear zones
 - Strong arsenic correlation
 - **6 district-scale targets** defined



>2,000 acres of BLM claims, including historic **B&H** and **Shields** mines. Adjacent to the historic Carissa Mine

- Highlights:
- **4.6 g/t Au** rock chip sample (RGC)
 - **18.9 g/t Au and 486 g/t Ag** (RGC 2023 samples)
 - **> 3 km** potentially mineralized shear zone
 - Estimated historic gold production at adjacent Carissa Mine: **200,000 oz Au**

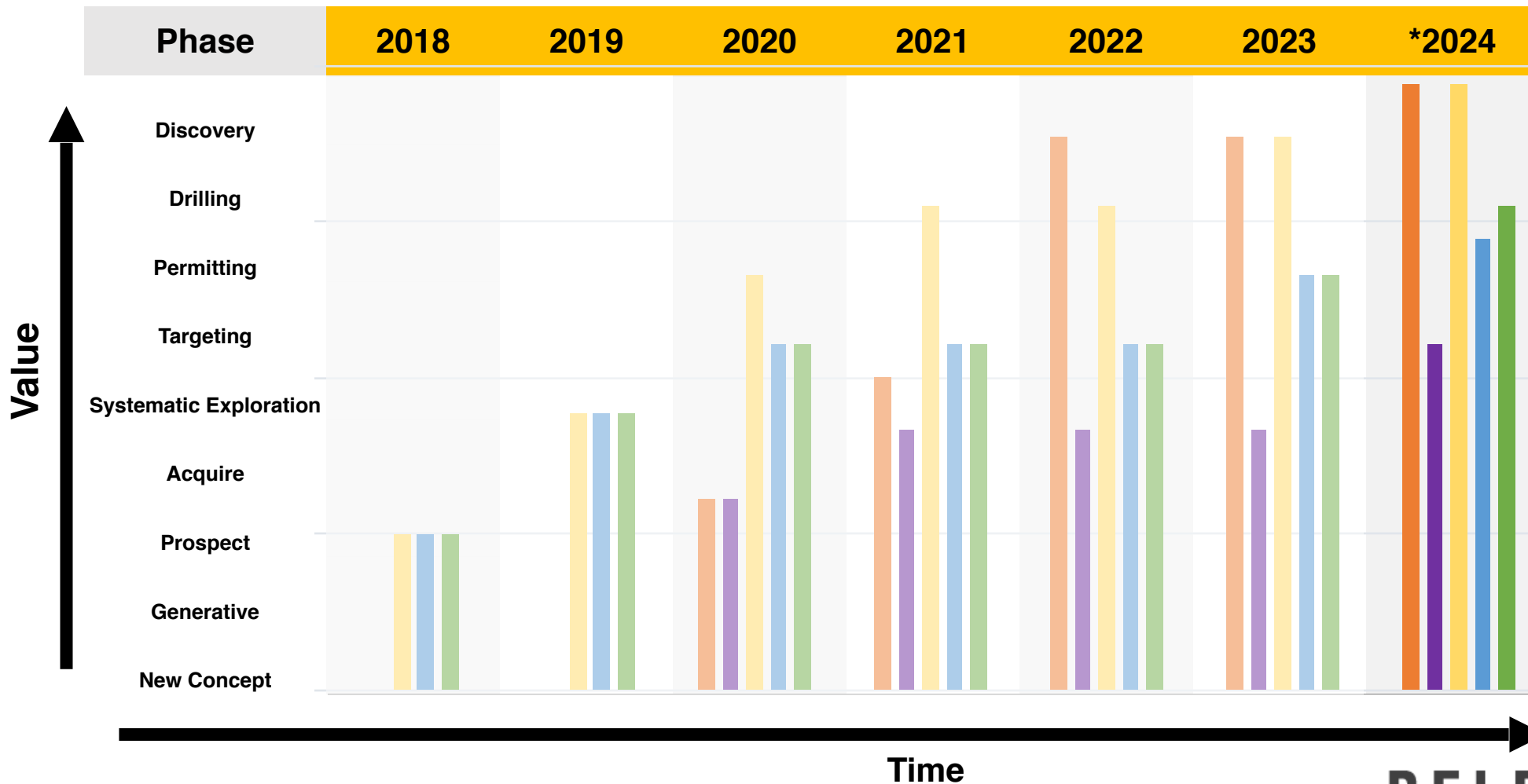


6,200 acres of BLM claims

- Highlights:
- Greenfields project with large unexplored zone of shearing recently exposed because of the wind
 - Reconnaissance mapping identified a massive **multi-km quartz rich shear zone** 2023 airborne geophysics depicts mafic dykes cross-cutting Archean structures under cover
 - 2024 **soil sampling program** underway to assess geochemistry and begin to define targeting potential



APPROACH SYSTEMATIC EXPLORATION

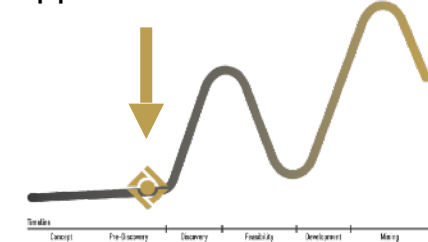


OPPORTUNITY KEY

- Golden Buffalo
- Lewiston
- Shield-Carissa
- Windy Flats
- Bradley Peak

* Anticipated outcomes

Relevant Gold: developing a pipeline of discovery opportunities!



The Lasonde Curve

RELEVANT GOLD

TSXV:RGC | OTCQB:RGCCF





PROOF OF CONCEPT

Orogenic Gold Checklist; RGC district-scale exploration checks all the boxes

	CRITERIA	DESCRIPTION
✓	Structural Setting	<ul style="list-style-type: none"> Major east-west Archean fault structures cutting across WY Mineralized secondary shear zones Brittle-ductile transition Complex re-folded folds Rheologic contrasts
✓	Host Rock	<ul style="list-style-type: none"> Amphibolites & greenstones Greywackes Carbonate facies iron formation
✓	Alteration	<ul style="list-style-type: none"> Chlorite, Carbonate, Sericite, Epidote, Sulfidation, Silica
✓	Geochemistry	<ul style="list-style-type: none"> Au, Ag, As, Bi, Cu, Sb, Pb, Zn
✓	Mineralization	<ul style="list-style-type: none"> Orogenic gold + intrusion style mineralization styles High-grade and visible orogenic gold proven (168 g/t Au) Orogenic sulfide minerals; arsenopyrite, pyrrhotite, & pyrite
✓	Land Position	<ul style="list-style-type: none"> 5 district-scale assets across 150 km Archean belt Big enough to host the largest known orogenic type deposits Well established infrastructure, access, water, and power
✓	Scalable Opportunity	<ul style="list-style-type: none"> Connection to Abitibi during gold mineralization (2.65 ba) Multiple high-grade targets with Abitibi-scale potential
✓	Permitting	<ul style="list-style-type: none"> Streamlined State and Federal permitting pathway Multiple exploration permits in hand Wyoming has deep roots in mining and natural resources



*2020 Trench sample collected by Golden Buffalo Mining Company





NEAR-TERM CATALYSTS

The 2024 exploration season will seek to **define the gold potential** with geophysics and drilling at South Pass and identify, refine and permit **high-grade drilling targets** at Bradley

2024 EXPLORATION



Catalysts Acquisitions &

- ✓ **Permitting**
 - Doubled the size of Bradley Peak through staking/leasing (2,000 hectares to 5,950 acres)
 - Received drill permit at historic high-grade Burr target, Lewiston



advanced geophysics

- ✓ **Advanced reprocessing and 3D inversion of 2023 airborne geophysical data**
- ✓ **Airborne EM survey planning and funding considerations**
 - Exploring the use of State of Wyoming matching grant funds to support this effort.



Drill target refinement

- ✓ **Robust 2024 mapping and sampling program at Bradley Peak designed to define drill targets**



Follow Up DRILL

- ✓ **Drill program at Lewiston (Burr target) anticipated to commence Sep. 2024**
 - 1,000+ m program, 5-8 drill holes planned
 - Testing continuation of major structures to a depth of ~100m below high-grade historic mines

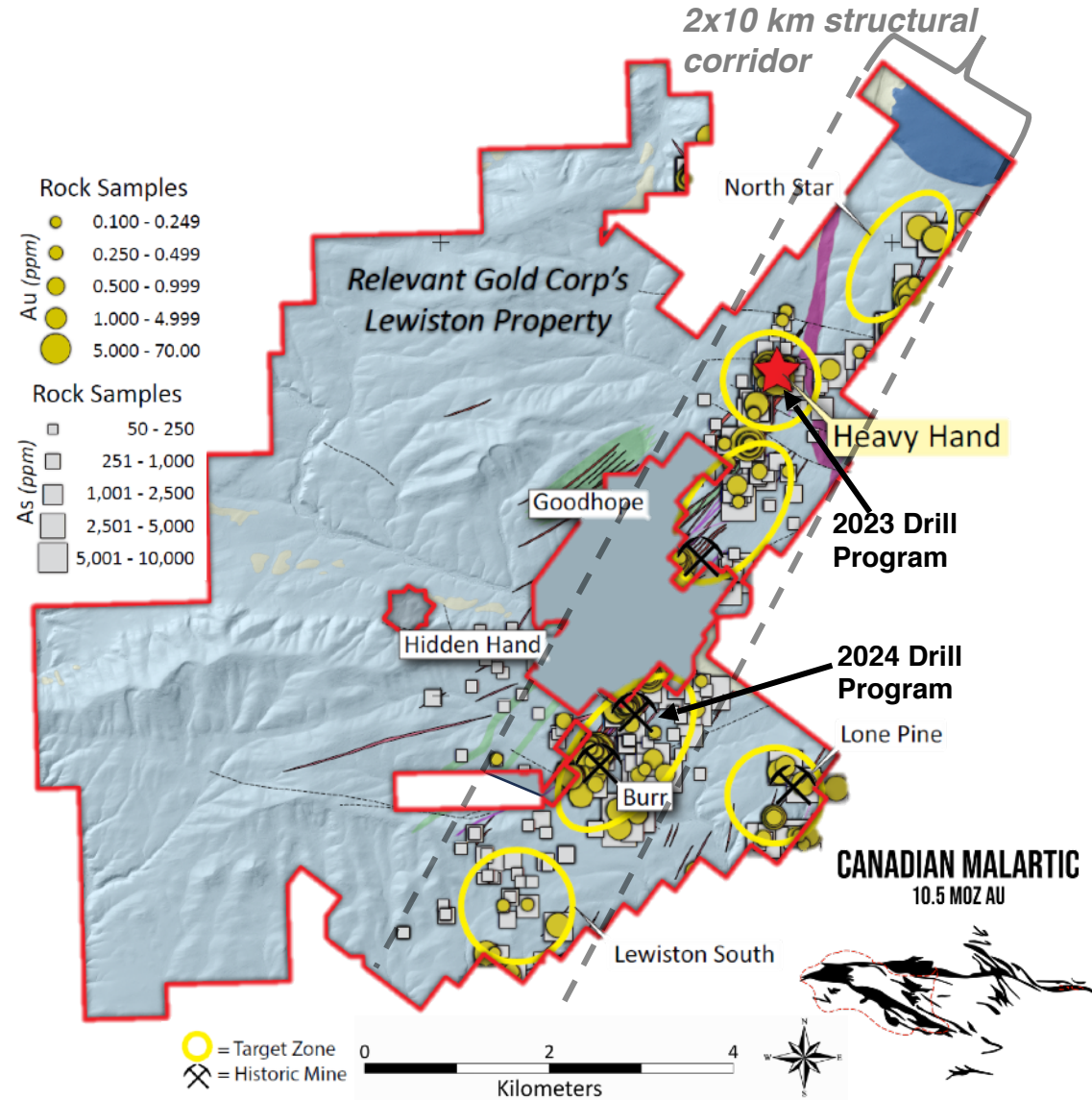




LEWISTON

project OVERVIEWS

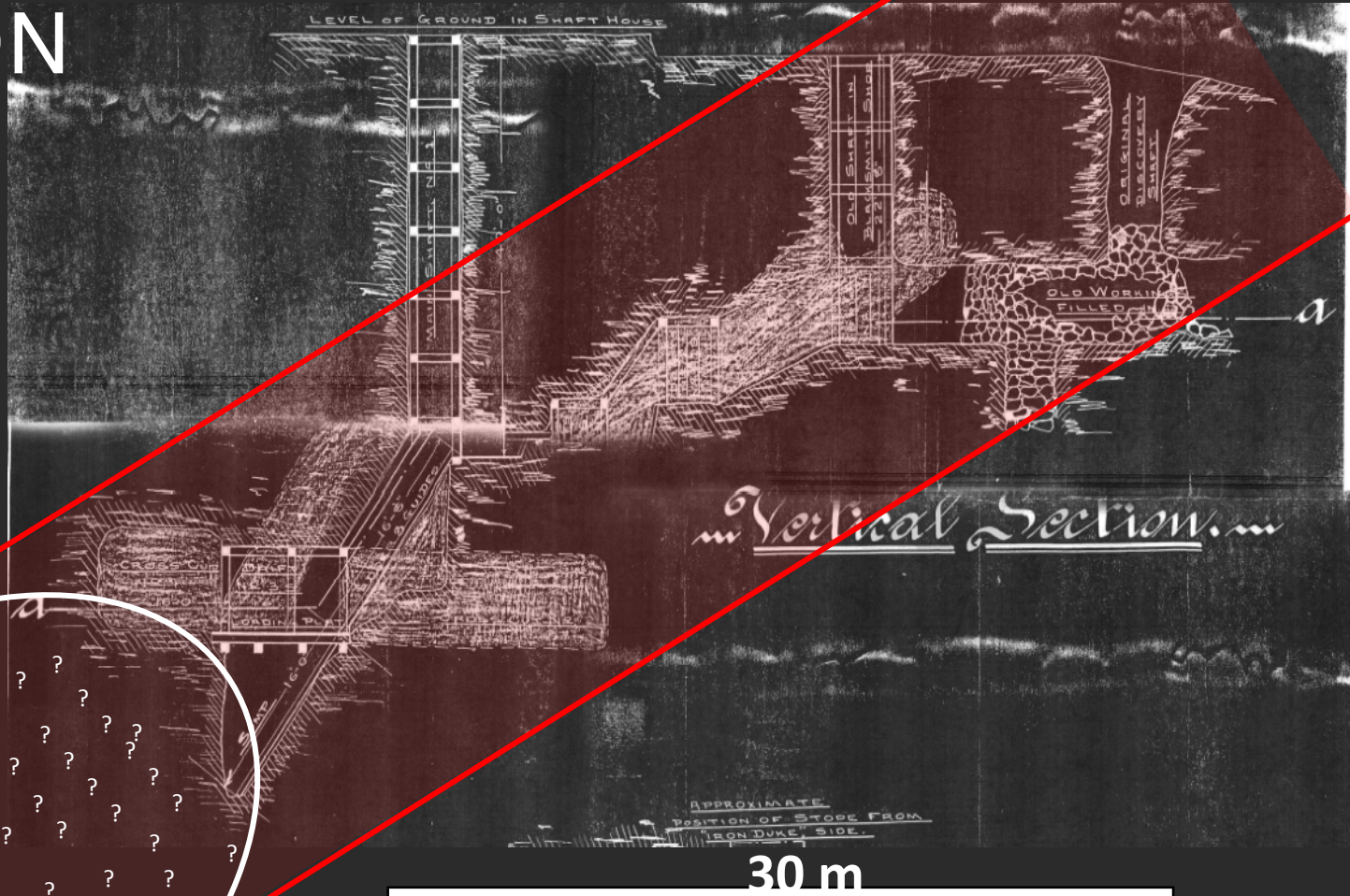
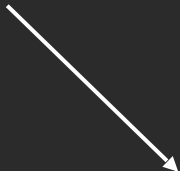
- 14,000 acres (5,665 ha) footprint
- 4 historic gold mines on property
- 6 high-grade targets defined
- 2023 Drill Program:
 - 1,560 m drilled at Heavy Hand target
 - Cut gold in 10 of 11 holes
 - Top interval: 1.9 g/t Au over 0.5 m, 0.34 g/t Au over 10 m
- 2024 Drill Program
 - 1,000+ m program planned at Burr target
- > 10 km of potentially mineralized shear zones
- 1,690 oz/ton Au (historic rock chip sample)
- 62 g/t Au, 8.1% Cu (RGC rock chip sample)
- Strong arsenic correlation





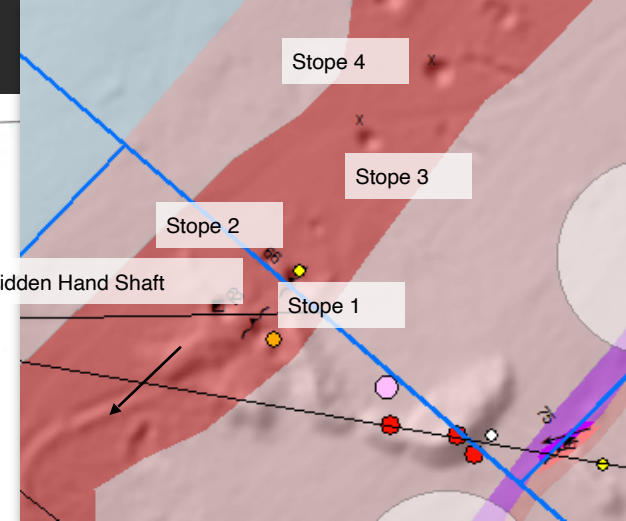
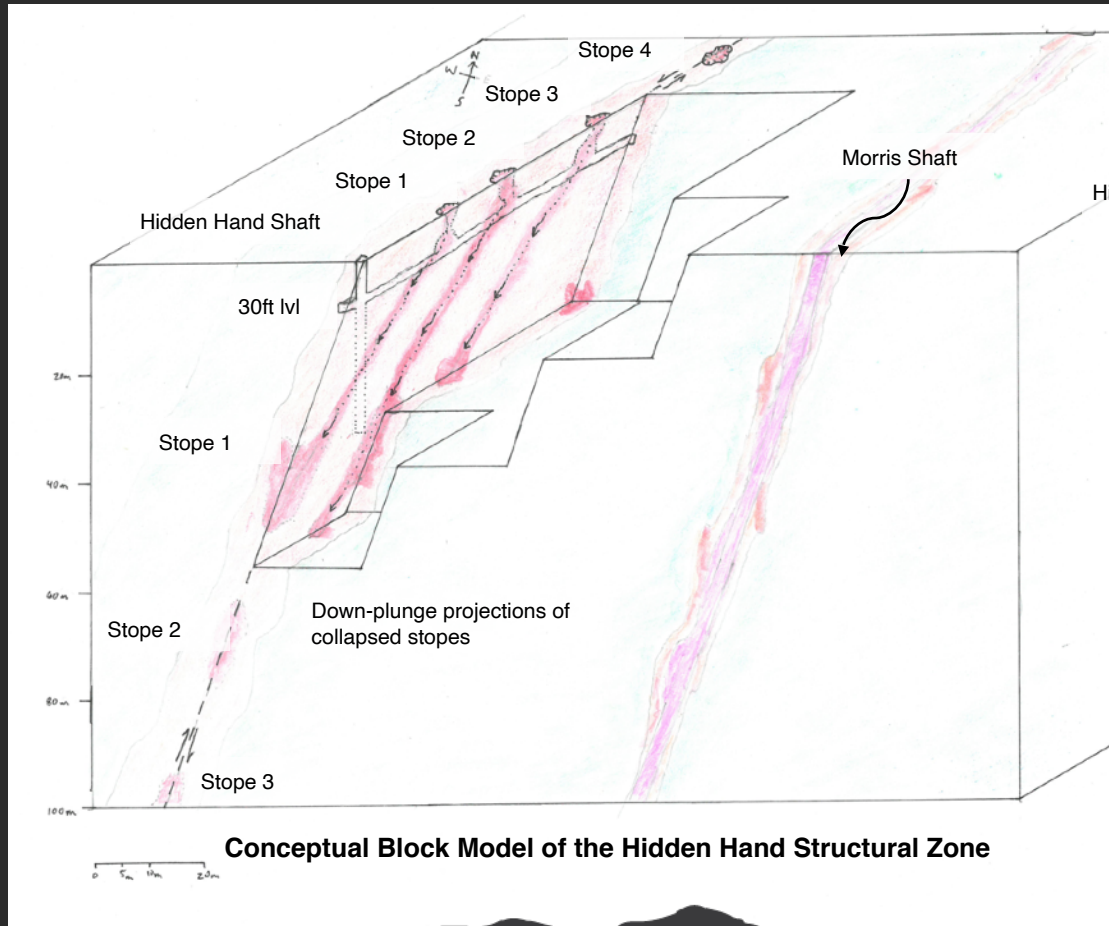
HIDDEN HAND HISTORIC X-SECTION

2024 Drilling Focus





HIDDEN HAND CONCEPTUAL MODEL



- A schematic of an idealized display of the Hidden Hand area was generated by combining historical descriptions of the mining operations, inferred locations of collapsed stopes, and geological mapping data
- Ore-shoot plunges are assumed to be more or less parallel to the trend and plunge of boudin necks and mineral lineations documented in the area

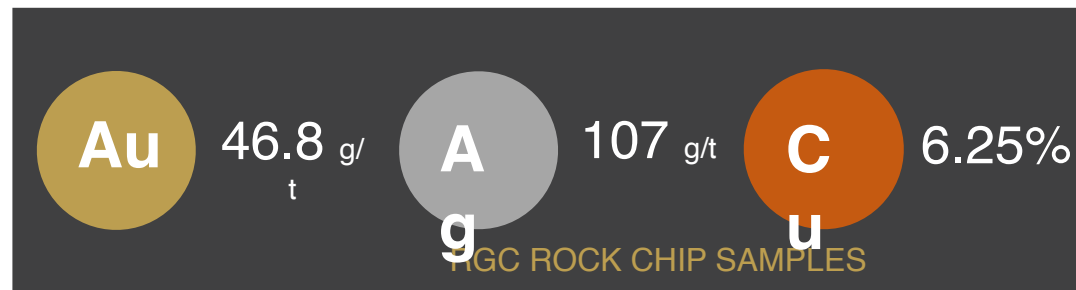
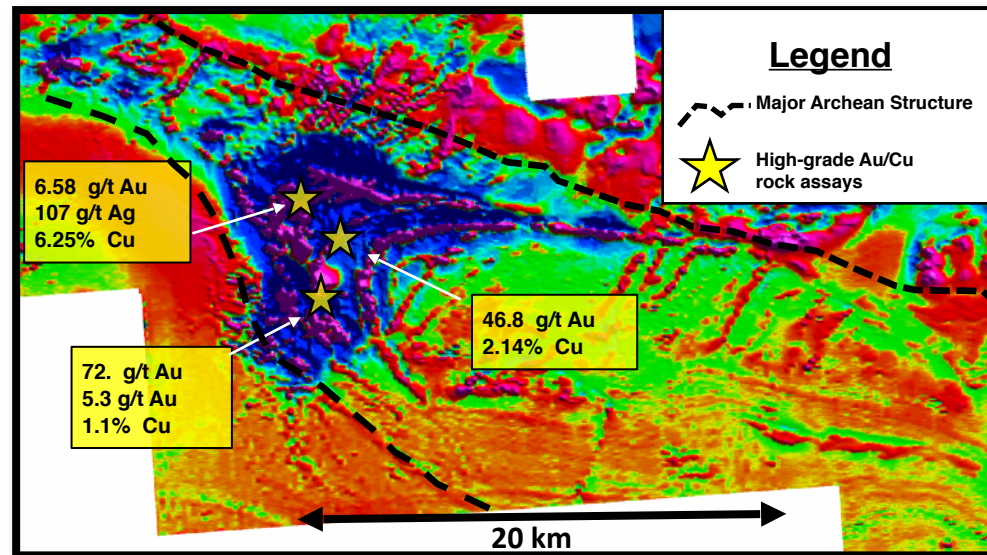




BRADLEY PEAK GOLD CAMP

	Criteria	Description
✓	Structural Setting	<ul style="list-style-type: none"> Major shear zones Brittle-ductile transition Complex re-folded folds Rheologic contrasts
✓	Host Rock	<ul style="list-style-type: none"> Amphibolites & greenstones Carbonate facies Iron Formation Mafic and felsic intrusives Komatiites
✓	Alteration	<ul style="list-style-type: none"> Chlorite, Carbonate, Sericite, Epidote, Sulfidation & Silica
✓	Geochemistry	<ul style="list-style-type: none"> Au, Ag, As, Bi, Cu, Sb, Pb & Zn
✓	Mineralization	<ul style="list-style-type: none"> Orogenic and intrusion-related gold mineralization systems Confirmed sulfide assemblage related to mineralization
✓	Land Position	<ul style="list-style-type: none"> 100% RGC ownership of 281 contiguous unpatented active BLM claims Rural sub-mountainous terrane ~50miles from well established town and infrastructure
✓	Scalable Opportunity	<ul style="list-style-type: none"> Multiple district-scale targets RGC controls 98% of the entire greenstone belt camp
✓	Permitting	<ul style="list-style-type: none"> Streamlined State +/- Federal permitting pathway

Magnetic Survey – Vertical Derivative at Bradley Peak Camp



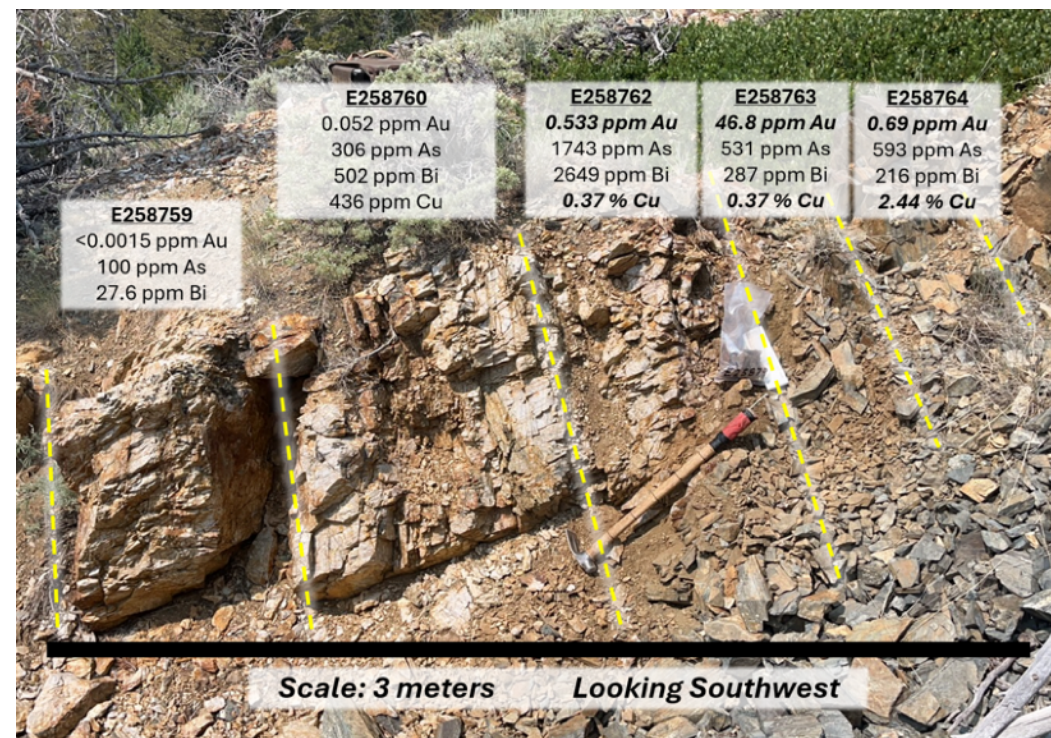


BRADLEY PEAK

HIGHLIGHTS project OVERVIEW



- 10,800 acres (4,391 ha) footprint
- 7 high-grade targets identified in 3 district-scale target zones
 - Kortez, Apex, and Deserted Treasure
- 46.8 g/t Au, 2.44% Cu (RGC rock chip sample)
- 89 g/t Au, 5.8% Cu (historic rock chip sample)
- 2023 airborne geophysics depicts a massive 100+ km² fold hinge anomaly
- >2.5 km trend of mineralized structure at Apex
- 50+ km of new shear zones mapped
- 2024 mapping/sampling program results pending



E258760 0.052 ppm Au 306 ppm As 502 ppm Bi 436 ppm Cu	E258762 0.533 ppm Au 1743 ppm As 2649 ppm Bi 0.37 % Cu	E258763 46.8 ppm Au 531 ppm As 287 ppm Bi 0.37 % Cu	E258764 0.69 ppm Au 593 ppm As 216 ppm Bi 2.44 % Cu
E258759 <0.0015 ppm Au 100 ppm As 27.6 ppm Bi			

“The high-grade gold, silver, and copper targets we have identified at Bradley Peak show significant potential, and the geophysical data indicates this is an opportunity of scale. These new acquisitions secure additional prospective ground and create a buffer around our highest-priority targets as we focus on expediting drill permitting.”

- RGC CEO Rob Bergmann



WHY INVEST?

TIGHTLY HELD STRUCTURE:

~75M shares
outstanding
(Major shareholders:
Kinross Gold, New
Gold, Rob McEwen)

UPSIDE MULTIPLIER:

A belt-scale concept
with a pipeline of
discovery
opportunities

FIRST MOVER ADVANTAGE:

50k-acre land package
with 5 district-scale
projects in mining-
friendly Wyoming

GRADE IS KING:

Proven high-grade
orogenic gold at
surface and at depth

STRONG MARKET POSITION:

A unique discovery
opportunity with many
near-term catalysts
and recent successes

HUMAN CAPITAL INFRASTRUCTURE:

Proven execution team
and a unique toolkit
for turnkey exploration
support with Big Rock





If you could go back and invest in the Abitibi before the gold rush...

How much would you invest?

Public domain photo. Gold mine, Lamaque, Abitibi, Quebec 1920



A promotional image for Relevant Gold featuring two men in the foreground wearing orange hard hats and safety vests. The man on the left is smiling and wearing sunglasses. The man on the right has a mustache and is also wearing sunglasses. In the background, there is a mining site with a drilling rig, a white truck, and a silver pickup truck under a blue sky with scattered clouds. A large, semi-transparent 'X' is overlaid on the background.

JOIN US FOR THE NEXT BIG DISCOVERY

WWW.RELEVANTGOLDCORP.COM

[@RELEVANTGOLDCORP](#)



FOR QUESTIONS & INFORMATION, PLEASE CONTACT:

investorrelations@relevantgoldcorp.com

+1-763-760-4886

RELEVANT GOLD

TSXV:RGC | OTCQB:RGCCF