



# GOLD TERRA

TSX.V: **YGT** | OTCQX: **YGTF** | Frankfurt: **TX0**

**Multi-million Ounce Potential in Yellowknife**

SEPTEMBER 2024 CORPORATE PRESENTATION

[www.goldterracorp.com](http://www.goldterracorp.com)

# Forward Looking Statement

Statements contained in this presentation that are not historical facts are "forward-looking information" or "forward-looking statements" (collectively, "Forward-Looking Information") within the meaning of applicable Canadian securities legislation. Forward Looking Information includes, but is not limited to, disclosure regarding possible events, conditions or financial performance that is based on assumptions about future economic conditions and courses of action; the timing and costs of future activities on the Company's properties; location and timing of potential future exploration activities; success of exploration, development and environmental protection and remediation activities; permitting time lines and requirements; requirements for additional capital; availability of skilled workforce and local service providers; staking and acquisition of additional mineral properties and claims; requirements for potential environmental conditions relating to mineral claims; planned environmental studies; planned exploration and development of properties and the results thereof; planned expenditures and budgets and the execution thereof. In certain cases, Forward-Looking Information can be identified by the use of words and phrases such as "plans", "expects" or "does not expect", "is expected", "budget", "scheduled", "estimates", "forecasts", "intends", "anticipates", "potential", "confirm" or "does not anticipate", "believes", "contemplates", "recommends" or variations of such words and phrases or statements that certain actions, events or results "may", "could", "would", "might" or "will be taken", "occur" or "be achieved". In preparing the Forward-Looking Information in this presentation, the Company has applied several material assumptions, including, but not limited to, that any additional financing needed will be available on reasonable terms; the exchange rates for the U.S. and Canadian currencies will be consistent with the Company's expectations; that the current exploration, development, environmental and other objectives concerning the Company's properties can be achieved and that its other corporate activities will proceed as expected; that the current price and demand for gold will be sustained or will improve; that general business and economic conditions will not change in a materially adverse manner and that all necessary governmental approvals for the planned exploration, development and environmental protection activities on the Company's properties will be obtained in a timely manner and on acceptable terms; the continuity of the price of gold and other metals, economic and political conditions and operations. Forward-Looking Information involves known and unknown risks, uncertainties and other factors which may cause the actual results, performance or achievements of the Company to be materially different from any future results, performance or achievements expressed or implied by the Forward-Looking Information. Such risks and other factors include, among others, the industry-wide risks and project-specific risks identified in the Company's management discussion and analysis available at [www.sedar.com](http://www.sedar.com) and summarized above; risks related to the availability of financing on commercially reasonable terms and the expected use of proceeds; operations and contractual obligations; changes in exploration programs based upon results of exploration; future prices of metals; availability of third party contractors; availability of equipment; failure of equipment to operate as anticipated; accidents, effects of weather and other natural phenomena and other risks associated with the mineral exploration industry; environmental risks, including environmental matters under Canadian federal and Northwest Territories rules and regulations; impact of environmental remediation requirements; certainty of mineral title; community relations; relations and negotiations with local First Nations in respect of the Company's current and planned activities; delays in obtaining governmental approvals or financing; fluctuations in mineral prices; the Company's dependence on one mineral project; the nature of mineral exploration and mining and the uncertain commercial viability of certain mineral deposits; the Company's lack of operating revenues; governmental regulations and the ability to obtain necessary licenses and permits; risks related to mineral properties being subject to prior unregistered agreements, transfers or claims and other defects in title; currency fluctuations; changes in environmental laws and regulations and changes in the application of standards pursuant to existing laws and regulations which may increase costs of doing business and restrict operations; risks related to dependence on key personnel; and estimates used in financial statements proving to be incorrect; as well as those factors discussed in the Company's public disclosure record. Although the Company has attempted to identify important factors that could affect the Company and may cause actual actions, events or results to differ materially from those described in Forward-Looking Information, there may be other factors that cause actions, events or results not to be as anticipated, estimated or intended. There can be no assurance that Forward-Looking Information will prove to be accurate, as actual results and future events could differ materially from those anticipated in such statements. Accordingly, readers should not place undue reliance on Forward-Looking Information. Except as required by law, the Company does not assume any obligation to release publicly any revisions to Forward-Looking Information contained in this presentation to reflect events or circumstances after the date hereof or to reflect the occurrence of unanticipated events.





# Cautionary Statement

This presentation does not constitute an offer, advertisement or solicitation for the purchase of securities. Further, this presentation has been prepared by Gold Terra Resources Corp. ("Gold Terra") management and does not represent a recommendation to buy or sell securities. Investors should always consult their investment advisors prior to making any investment decisions. Any offer, advertisement or solicitation for the purchase of securities may only be conducted in accordance with applicable law.

In addition, investors are cautioned that this presentation may contain information about mineral properties adjacent to or near the Company's properties, or properties which the Company believes may be similar to the Company's properties. The Company has no right or interest in such properties. Mineral deposits on such adjacent, near or similar properties are not indicative of the mineral deposits, if any, which may be found on the Company's properties.

## **Cautionary Statement Regarding Estimates of Mineral Resources**

The mineral resource estimates reported in this news release have been prepared in accordance with the requirements of Canadian securities laws, which differ from the requirements of United States' securities laws. The CIM Definition Standards differ from the definitions in the United States Securities and Exchange Commission (the "SEC") Guide 7 (the "SEC Guide 7"). The terms "mineral resource", "Measured mineral resource", "Indicated mineral resource" and "Inferred mineral resource" are defined in NI 43-101 and recognized by Canadian securities laws but are not defined terms under SEC Guide 7 or recognized under U.S. securities laws. Readers are cautioned not to assume that any part or all of mineral deposits in these categories will ever be upgraded to mineral reserves. "Inferred mineral resources" have a great amount of uncertainty as to their existence, and great uncertainty as to their economic and legal feasibility. It cannot be assumed that all or any part of an "Inferred mineral resource" will ever be upgraded to a higher category. Under Canadian securities laws, estimates of "Inferred mineral resources" may not form the basis of feasibility or pre-feasibility studies, except in rare cases. Readers are cautioned not to assume that all or any part of an inferred mineral resource exists or is economically or legally mineable.

Mineral resources are not mineral reserves, and do not have demonstrated economic viability, but do have reasonable prospects for economic extraction. The estimate of mineral resources may be materially affected by geology, environmental, permitting, legal, title, socio-political, marketing or other relevant issues. Measured and Indicated mineral resources are sufficiently well defined to allow geological and grade continuity to be reasonably assumed and permit the application of technical and economic parameters in assessing the economic viability of the resource. Inferred mineral resources are estimated on limited information not sufficient to verify geological and grade continuity or to allow technical and economic parameters to be applied. Inferred mineral resources are too speculative geologically to have economic considerations applied to them to enable them to be categorized as mineral reserves. Under Canadian rules, estimates of Inferred mineral resources may not form the basis of feasibility or pre-feasibility studies or economic studies except for Preliminary Assessment as defined under NI 43-101. Readers are cautioned not to assume that further work on the stated resources will lead to mineral reserves that can be mined economically.

## **Technical Information**

The technical information in this presentation has been reviewed and approved by Joseph Campbell, Senior Technical Advisor of Gold Terra, a Qualified Person under National Instrument 43-101 ("NI 43-101"). Gold Terra's exploration activities at its properties were carried out under the supervision of Joseph Campbell.

# Company Snapshot

## Proven Exploration & Mine Building Team

### Gerald Panneton, Chairman & CEO

- Geologist with +35 years of Canadian and international experience
- Founder, President & CEO of Detour Gold Corporation (2006-2013)**
- Detour Lake project grew to over **16 Moz** in reserves and within **30 Moz** resources.
- Brought into production in just over six years. IPO 2007- Feb 2013
- Detour Gold was sold in 2018 for \$4.9 Billion**
- Raised \$2.6 B in capital while at Detour Gold.**
- Recipient of the PDAC 2011 Bill Dennis Award.
- Barrick Gold (1994-2006) Corporate Development and 2 Mines (Tulawaka & Buzwagi)

### Mark T. Brown, CFO

- 30 years of financial experience; President of Pacific Opportunity
- Founder of Rare Element Resources Ltd.

### Paul Bonneville | Director

- Mining engineer with over 30 years of experience

### Louis Dionne, Senior Technical Advisor

- Mining engineer with +35 yrs of experience (+20 yrs at Barrick Gold)
- Previous Director of Detour Gold and Aurizon Mines

### Joe Campbell, Senior Technical Advisor

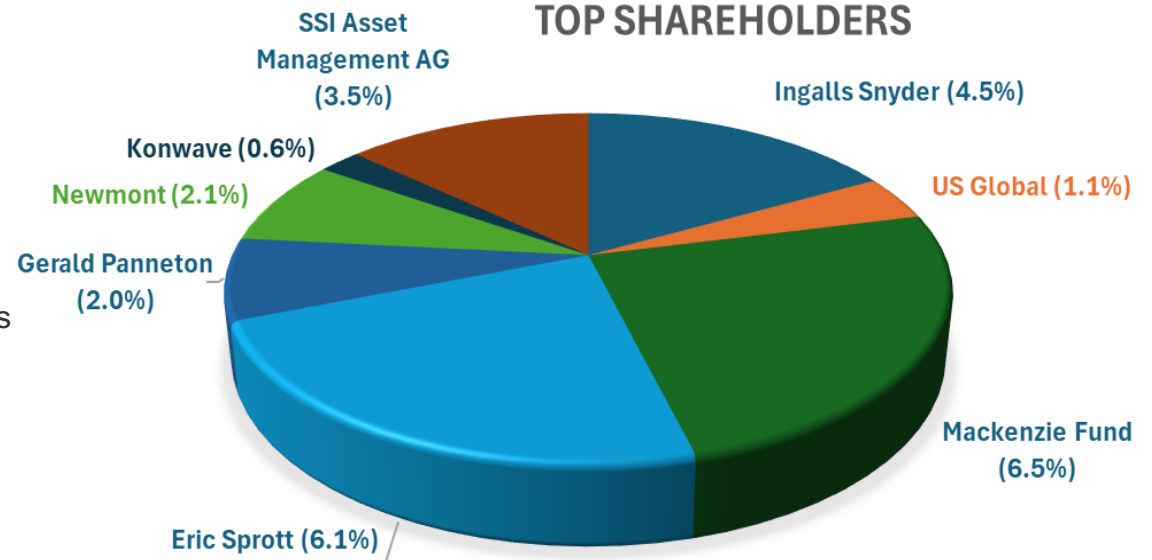
- Founder of Company and professional geologist with +40 years of experience (mainly with Noranda and Western Mining Corp.)

| Gold Terra Capitalization <sup>1</sup> | (in millions) |
|--|---------------|
| Shares Outstanding                     | 331.2         |
| Options                                | 9.5           |
| Fully Diluted Shares                   | 340.7         |



Canada – A safe jurisdiction

### TOP SHAREHOLDERS



# **SIMPLE FOCUSED STRATEGY for SHAREHOLDERS**

## **BUILDING VALUE**

**CAMPBELL SHEAR (CS) = 14 Moz @ 16-22 g/t**

**CANADIAN ASSET with DISTRICT SCALE  
70km of the Campbell Shear**

**INFRASTRUCTURE – Hydro Power, airport  
Yellowknife town of 20,000**

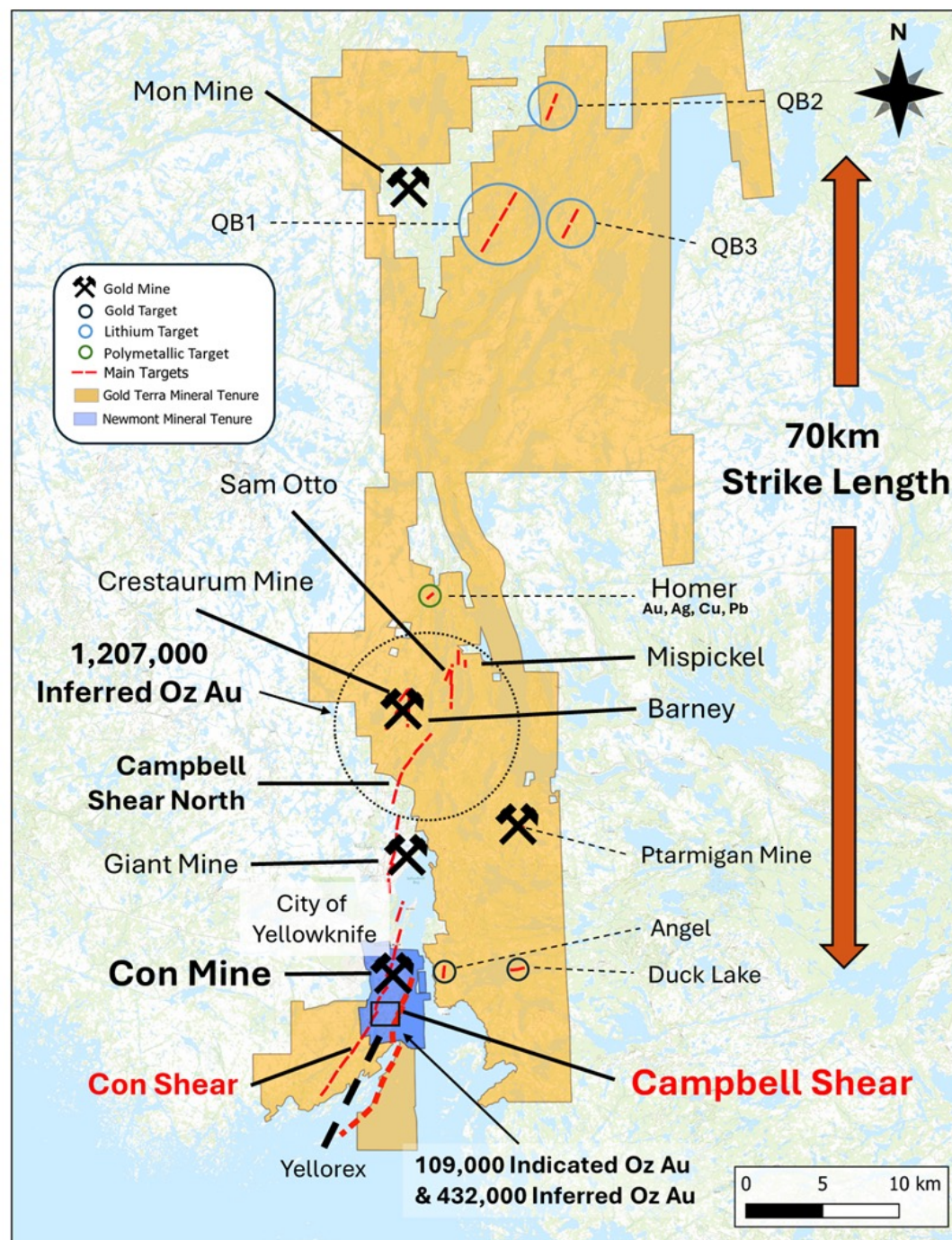
**Con Mine Option = Mining Lease / Brownfield**

**Management = Execution & Track Record**

# Strategic Land Holdings Covering an Extensive Mineralized System in the Yellowknife Gold Belt

Combined 1.8-Million Ounces Discovered on 918 sq. km land package:

- September 2022 (MRE) Mineral Resource Estimate of 109,000 Indicated Ounces and 432,000 Inferred Ounces on the Con Mine Option Property.
- March 2021 mineral resource estimate of 1,207,000 inferred ounces on the Yellowknife Project, 20 km north of town in 4 satellite deposits with Crestaurum open pit @ 6 g/t Au



(see Oct. 21, 2022, Technical Report)



# UPCOMING CATALYSTS / TIMELINE

## 2024 MILESTONES

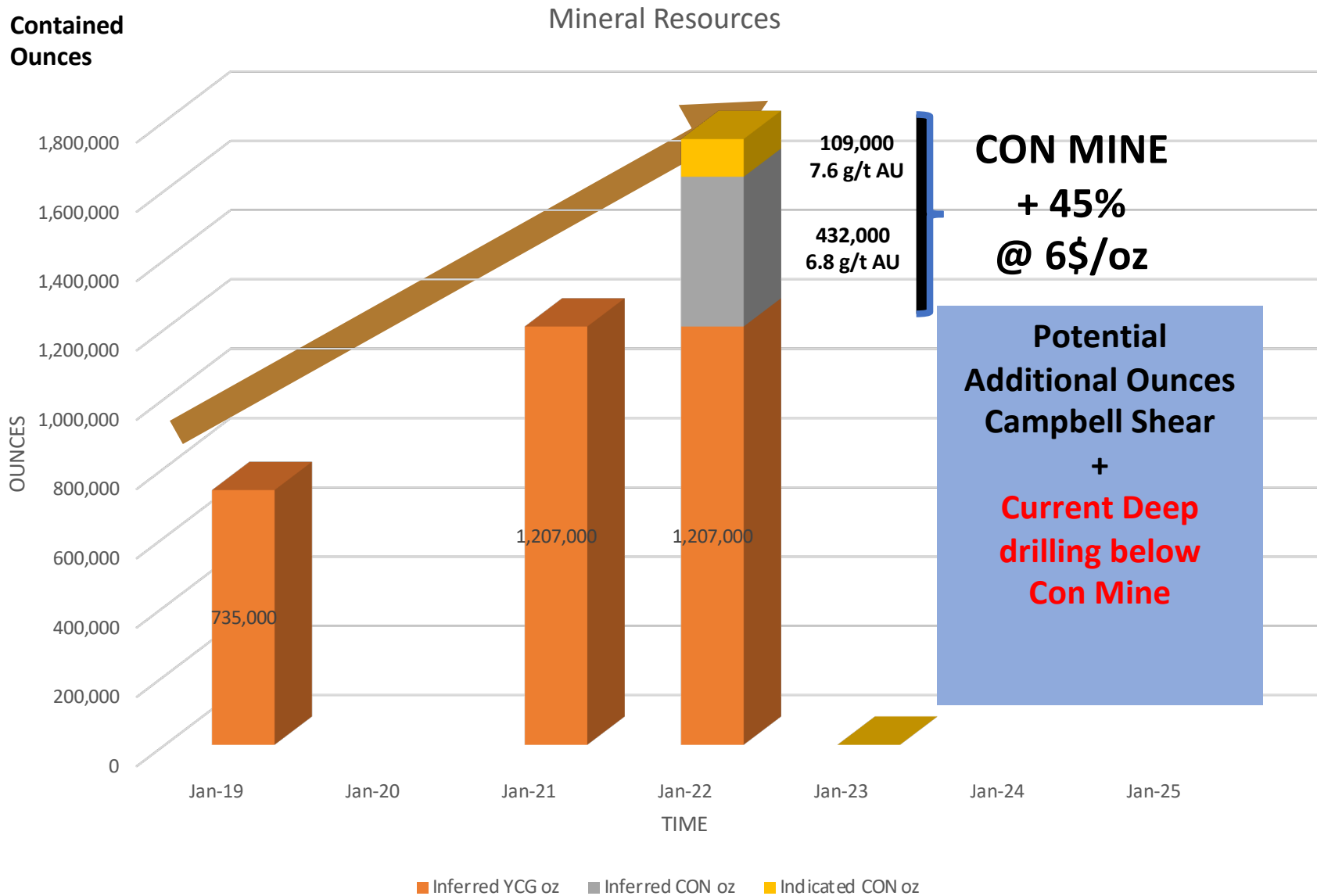
### **Deep Drilling program on Con Mine Option Property:**

- July 2024 – Master hole GTCM24-056 was completed at 3002 metres
- Q4 = Drilling to restart with (wedges/offset) from the master hole to test the 1-2 Moz window (-1900m to -2600m)

## 2025 and Beyond (subject to financing)

- 2025 = 5000m Campbell Shear high grade target below Con Mine
- Winter 2025 = 10,000m Campbell shear near the C1 shaft
- Winter 2025 = 10,000m Campbell shear North of town + Zone 14
- 2025 = Updated Resource / PEA (Target +2 Moz at Con Mine)
- 2026 = PFS / FS completion = Production decision

# Expanding Mineral Resources





# Con Mine (1938-2003) 6 Moz @ 16-20 g/Au

**Workforce**

**Hydro Power**

**Airport- Roads**



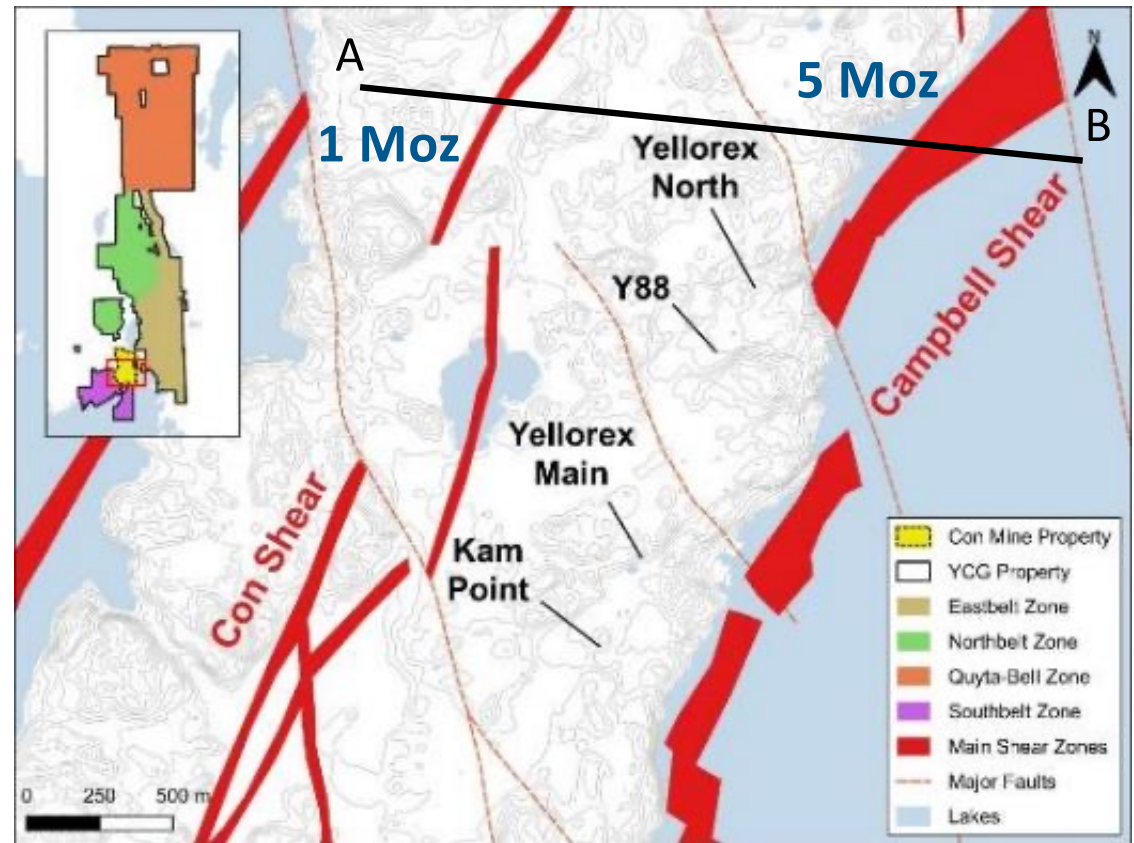
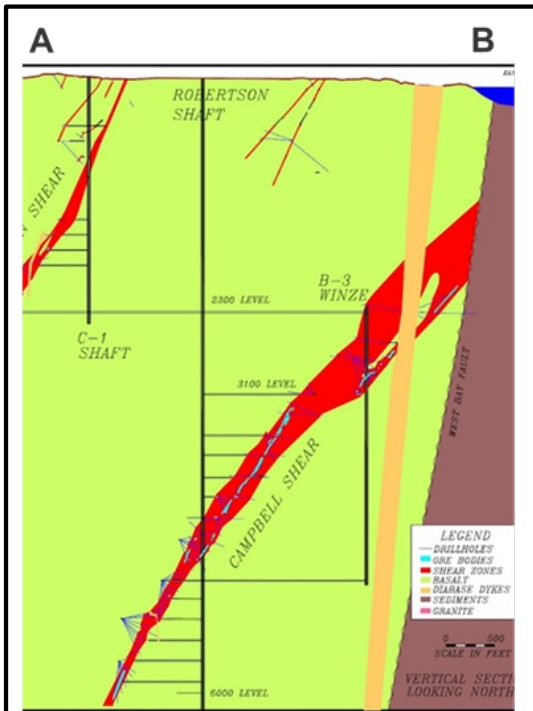


# Focus on the Prolific Campbell Shear

2023 drilling focus was on Con Mine near surface where the last MRE was the focus

Drilling Targets between surface and 500m vertical over 2km strike length:

- Yellorex North
- Yellorex Main



**Con Mine (1938-2003) Historic Production**

**1.0 Moz @ 20 g/t from Con Shear**

**5.1 Moz @ 16 g/t from Campbell Shear**

# Con Mine Option Property - Substantial Benefits To UNLOCK

## Con Mine Option to purchase 100% Interest would have MAJOR BENEFITS

- Mineral leases and overlying surface rights.
- Access to infrastructure, such underground openings and shafts, buildings, storage facilities and roads including original C -1 shaft opening, and deep Robertson shaft (1,950 metres) with a 2,000 ton per day capacity for future work, surface infrastructure including a large 10,000 square foot warehouse and dry; surface vehicles; and a 2015 C\$20 M water treatment plant
- Remaining historic sub-economic reserves based on a US\$370/oz gold price at the Con Mine as of January 1, 2003, of **650,000 ounces @ 11-12 g/t Au** (See [Oct. 21, 2022, Technical Report](#))
- Surface target potential = > 1 Moz
- Below existing UG workings = 1 Moz every 200m (5000 ounces/Vertical meter)
- 1 time back-in right over 5.0 Moz FS Measured + Indicated with CP of 3x Expenditures + US\$ 30/oz x 51%

## COMMITMENTS Before November 21<sup>st</sup>, 2027 (6-year Option with Newmont)

- Minimum spend of C\$ 8.0M (C\$ 10.9 M as of Dec 2023)
- Minimum 1.5 Moz in all categories to be outlined (0.542 to date)
- Liability (C\$ 9 M) / Cash Payment C\$8 M

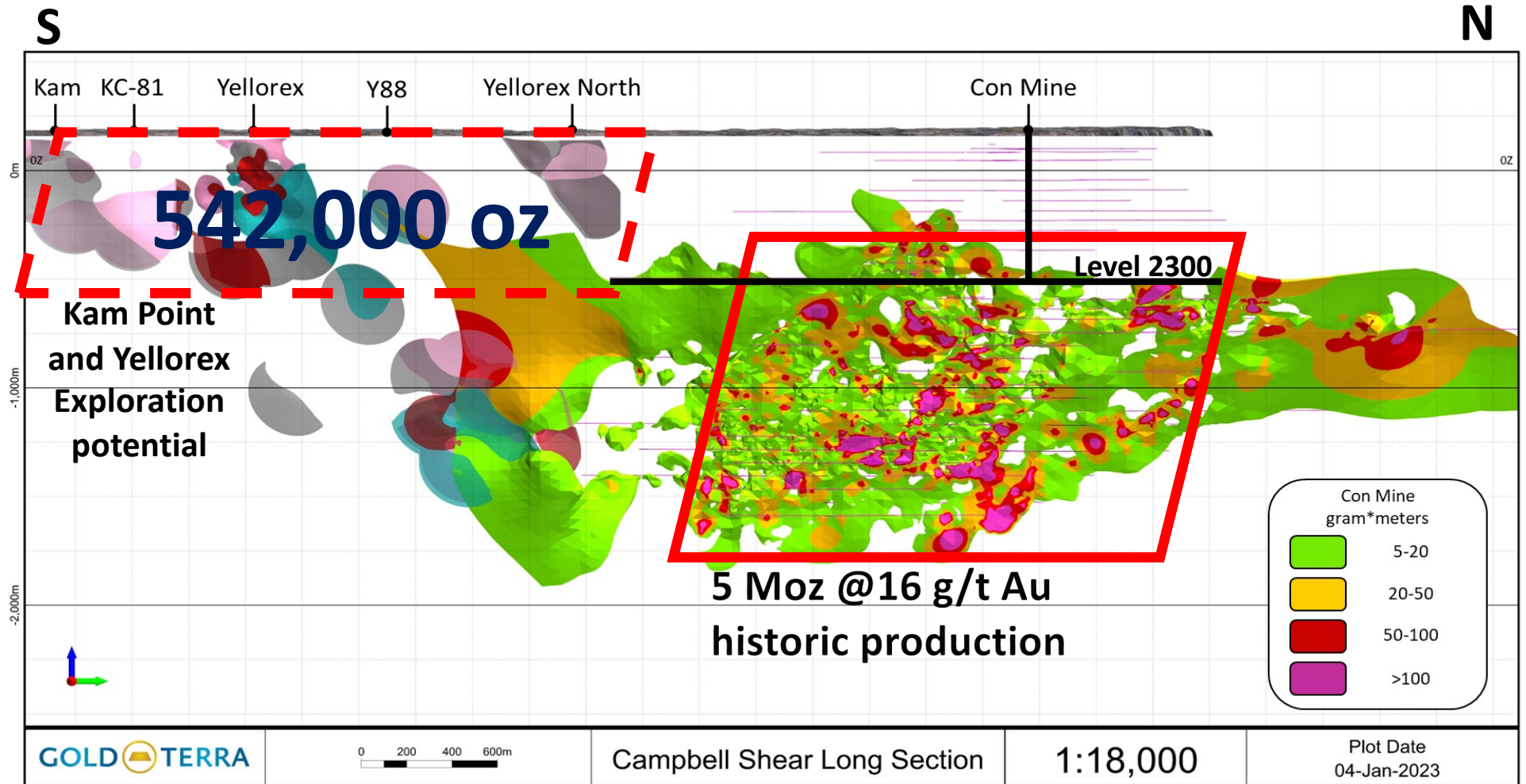


# 2022 Drilling Near Surface = 1<sup>st</sup> MRE @ 6\$ per oz

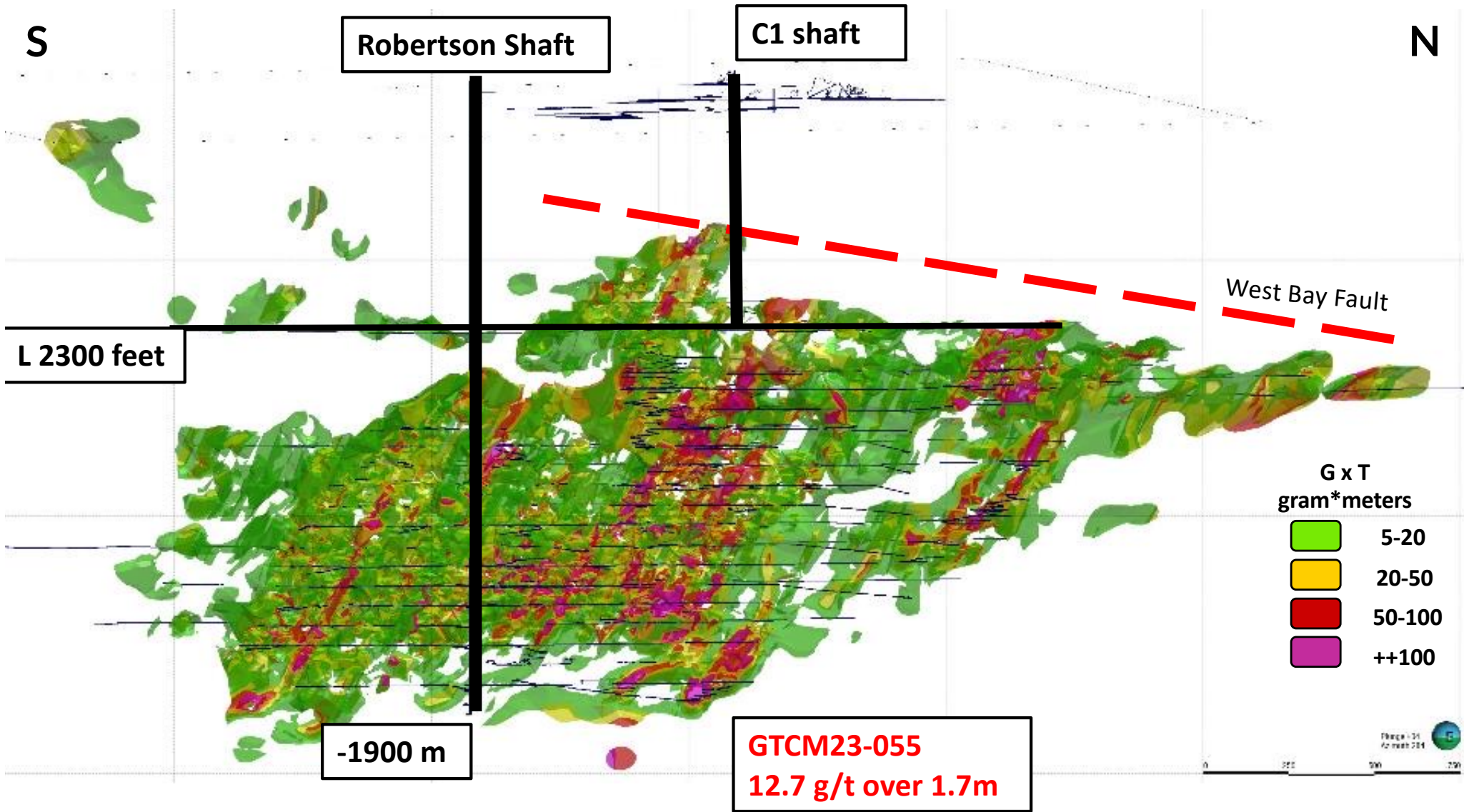
**Con Mine Option Property initial September 2022 MRE:**

UG Indicated 0.45 M tonnes averaging 7.55 g/t Au for 109,000 ounces contained gold

UG Inferred of 2.0 M tonnes averaging 6.74 g/t Au for 432,000 ounces contained gold

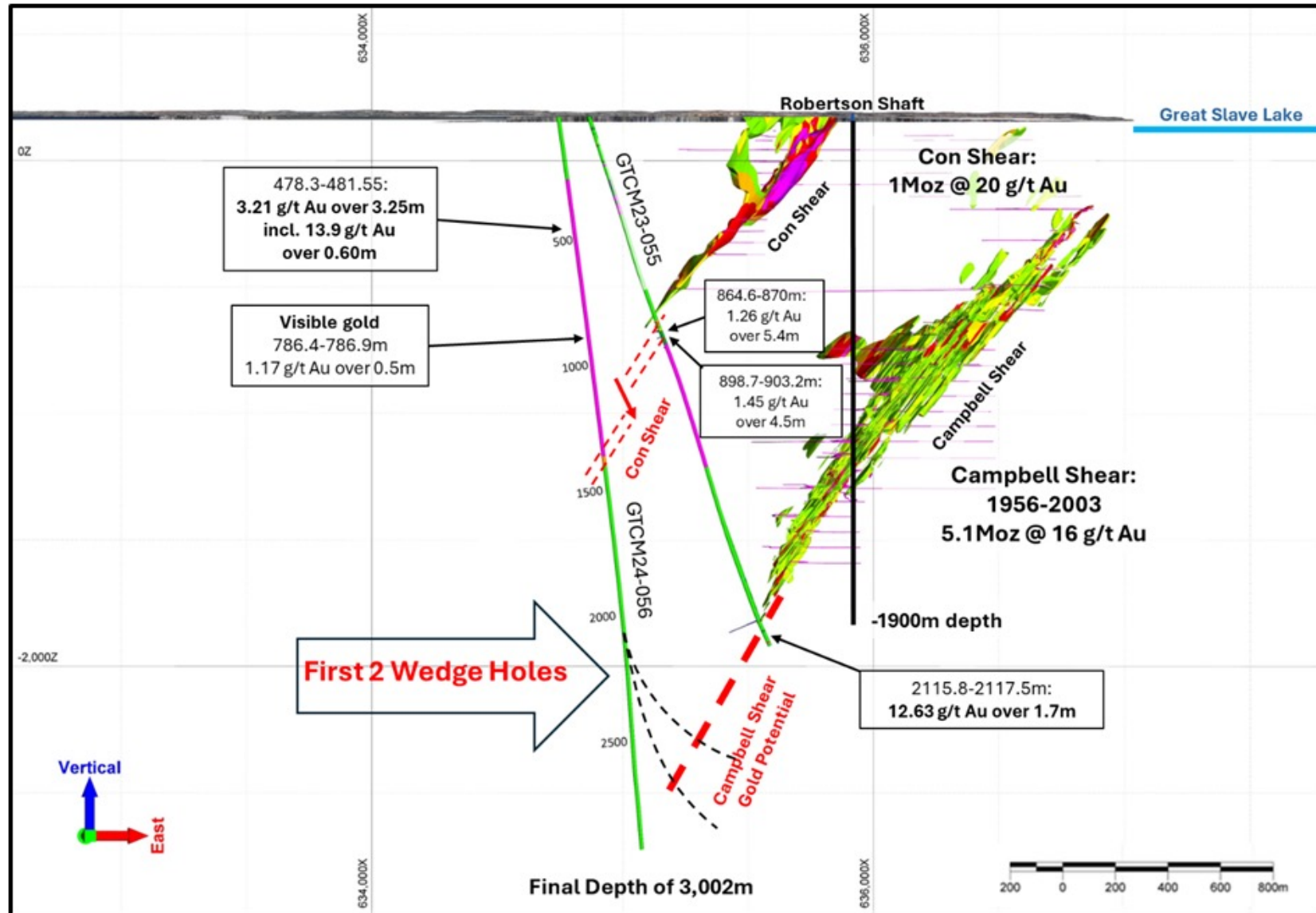


# CS – Close up Long Section looking West



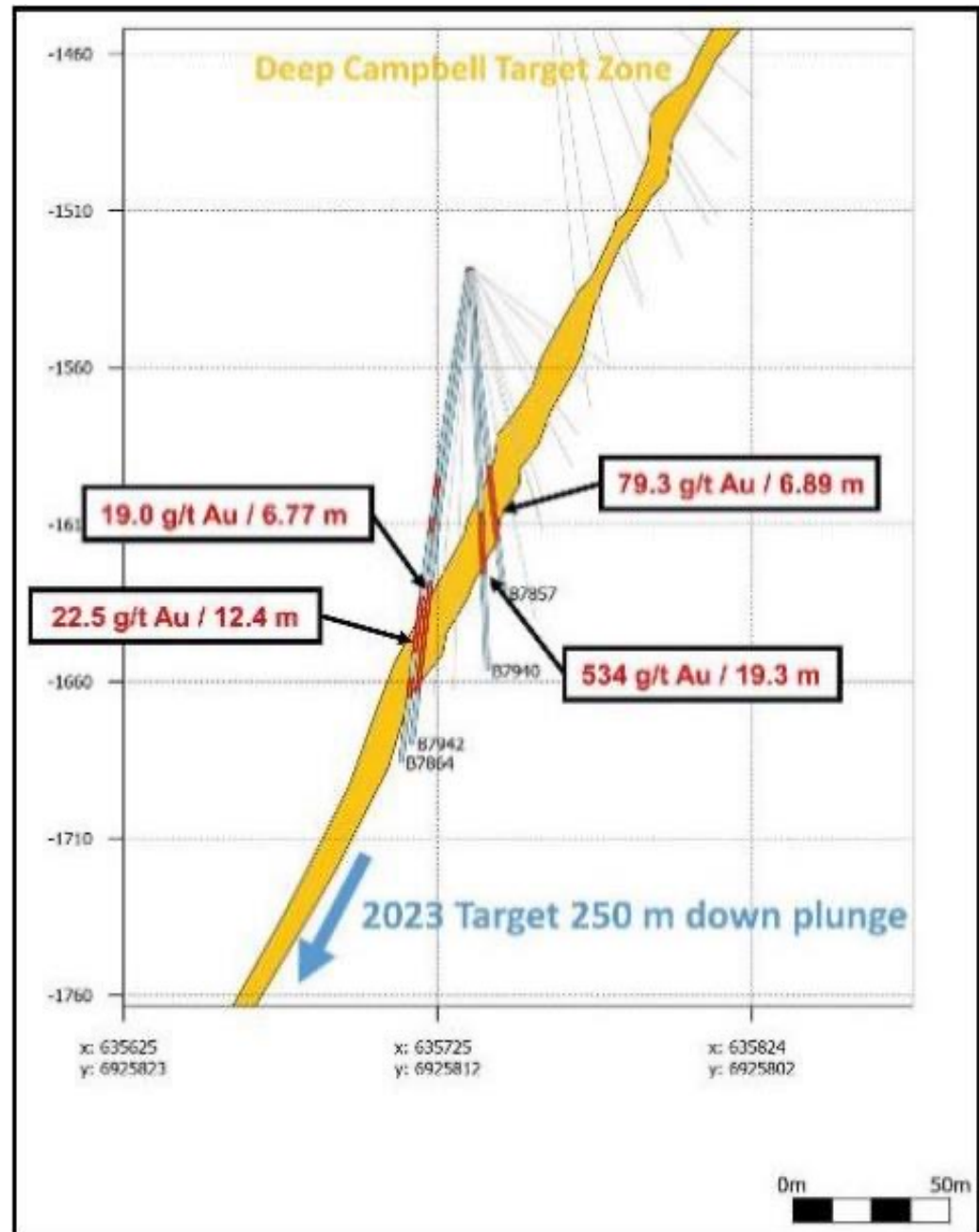
# Next Steps: Wedge Holes Targeting Campbell Shear

Cross section showing master hole GTCM24-056, the hanging granite wall zone, the Con Shear, and the gold potential window of the CS targeted by wedge holes

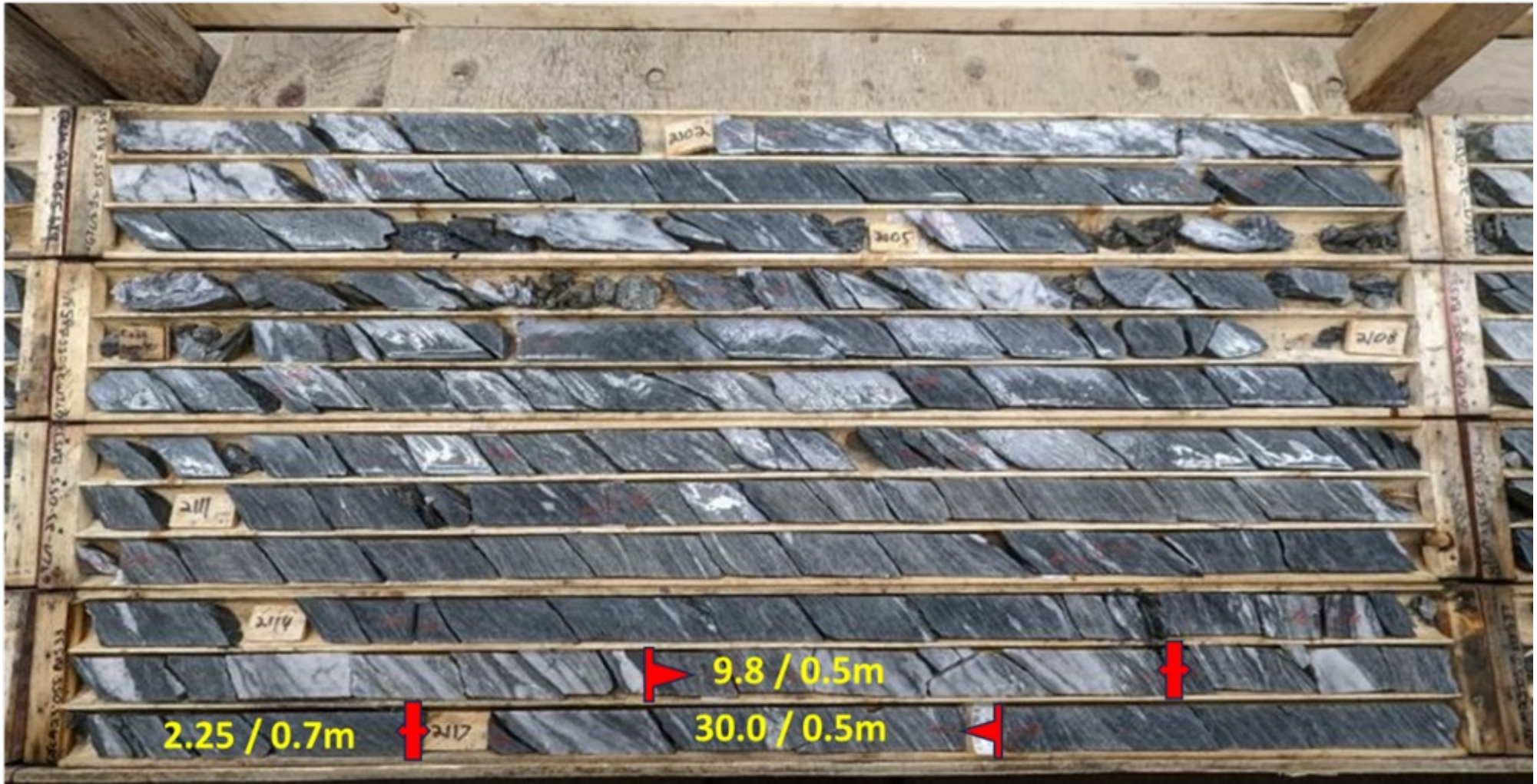




Underground  
Cross  
Section 7900  
looking  
North



Hole GTCM23-055 core showing the Campbell Shear from 2102 to 2118 metres Including 12.63 g/t over 1.7m (quartz veining):



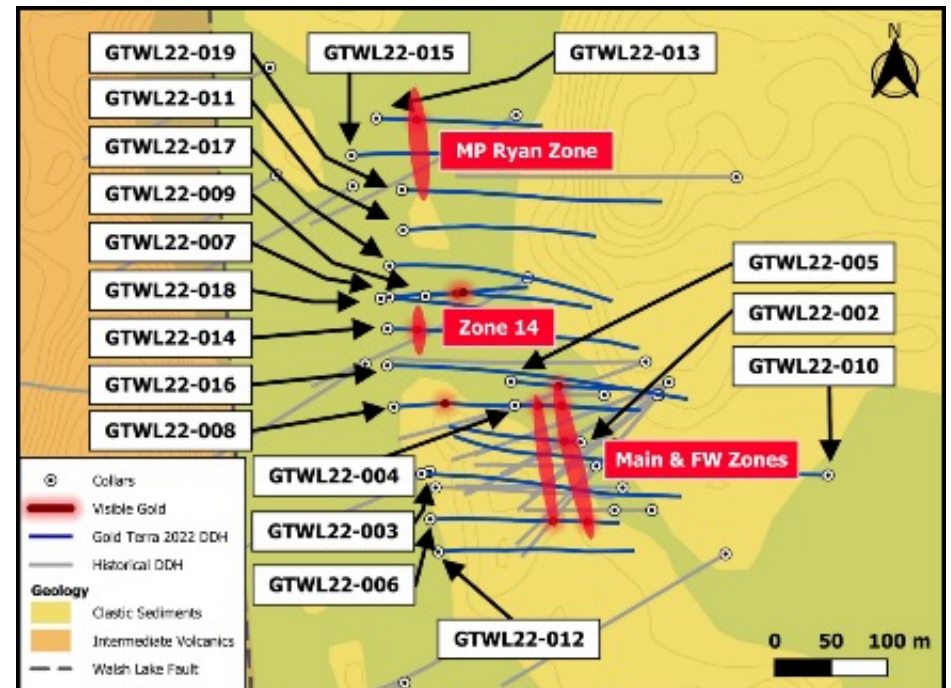
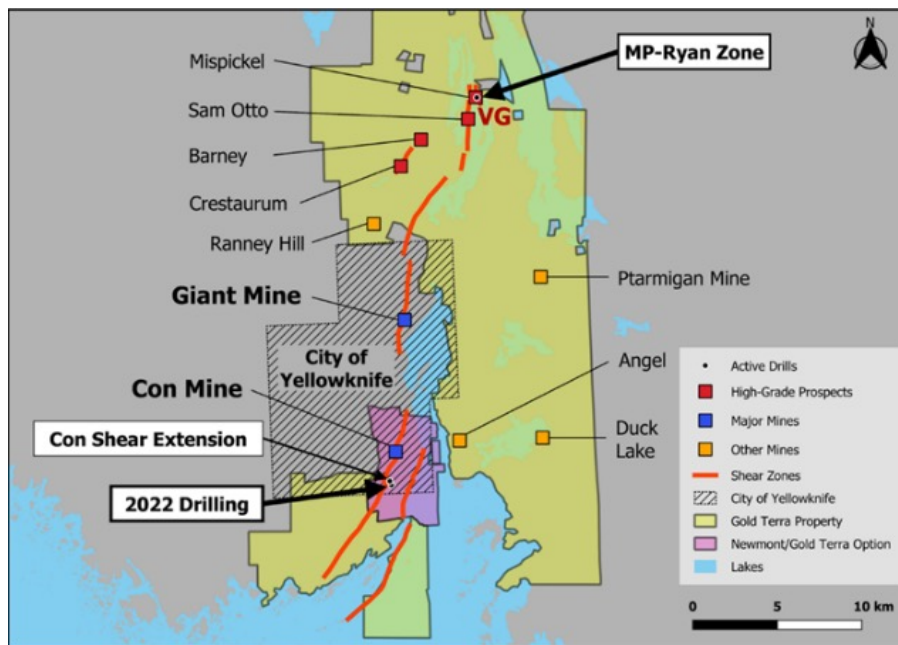


# New High-Grade Zones – Mispickel Area – North Belt

19 holes for 6,011 metres completed in 2022 (Not included in the last 2022 MRE)

Extended gold mineralization in the Mispickel area with the addition of two new gold zones, MP-Ryan and Zone 14 (next slide for section)

- GTWL22-002 = 19.00 g/t gold over 4 metres including 73.9 g/t over 1 metre
- GTWL22-004 = 7.63 g/t gold over 3 metres including 22.5 g/t Au over 1 metre
- GTWL22-0014 = 31.89 g/t gold over 3 metres including 69.4 g/t Au over 1 metre





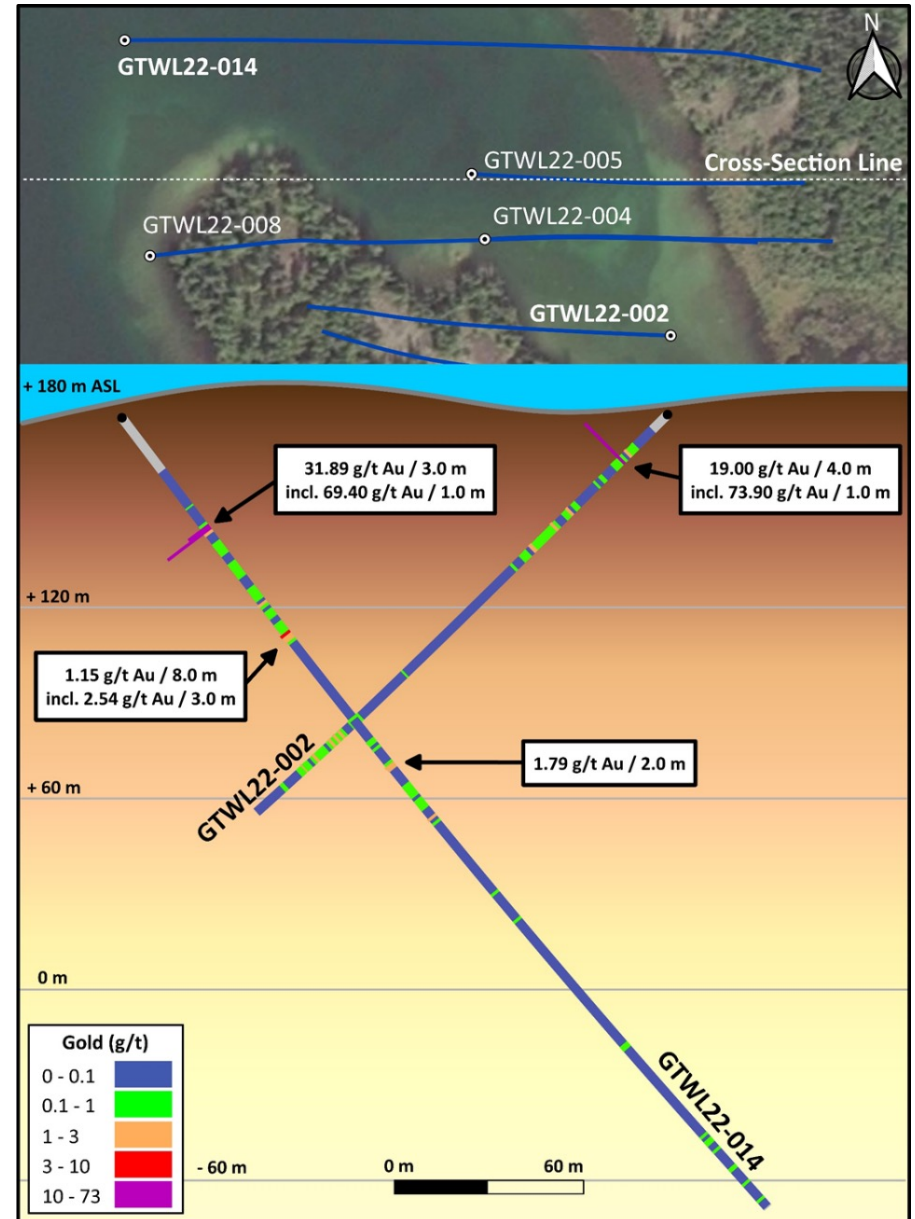
# New MP Ryan Zone – Mispickel Area – Visible Gold



VG in GTWL22-002



VG in GTWL22-014



# Commitment to ESG

Gold Terra is the recipient of the 2023 NWT MAX Environmental and Social Responsibility Award in recognition of exceptional efforts in supporting the 2023 NWT wildfire efforts



## Environmental Responsibility

2023 and 2017

NWT Max Award for Environmental and Social Responsibility



## Forward-Looking Engagement Plan

Support of Indigenous and community businesses



## Community Relations

- The City of Yellowknife
- Yellowknives Dene First Nations Government
- Tłı̨ch̨ Government
- North Slave Metis Alliance



## Social Responsibility

Town Halls, government meetings, stakeholder engagement  
Sponsorship of community and Indigenous events



## Local Workforce

Technical and exploration team from local communities;  
We value employee's strengths, potential and diversity



## Educational Partnerships

Implemented community school education courses including prospecting through Mining Matters





DGC DLM 001



For more information, please contact:

Gerald Panneton  
Chairman & CEO  
[gpanneton@goldterracorp.com](mailto:gpanneton@goldterracorp.com)

Mara Strazdins  
Manager of Investor Relations  
Phone: 1-778-897-1590 | 604-689-1749 ext 102  
[Strazdins@goldterracorp.com](mailto:Strazdins@goldterracorp.com)

**GOLD**  **TERRA**

[www.goldterracorp.com](http://www.goldterracorp.com)

TSX.V: **YGT** | OTCQX: **YGTF** | Frankfurt: **TX0**