



# SURGE

## BATTERY METALS

**Highest Grade Lithium Clay Resource  
in the USA**

VENTURE

**50**

**2024**

TSXV: NILI | OTCQX: NILIF | FRA: DJ5

# DISCLAIMER

**Surge Battery Metals Inc.** (“Surge Battery Metals” or “the Company”), has taken all reasonable care in producing and publishing information contained in this presentation, and will endeavor to do so regularly. Material in this presentation may still contain technical or other inaccuracies, omissions, or typographical errors, for which the Company assumes no responsibility. Surge Battery Metals does not warrant or make any representations regarding the use, validity, accuracy, completeness or reliability of any claims, statements or information in this presentation.

Under no circumstances, including, but not limited to, negligence, shall Surge Battery Metals be liable for any direct, indirect, special, incidental, consequential, or other damages, including but not limited to, loss of programs, loss of data, loss of use of computer or other systems, or loss of profits, whether or not advised of the possibility of damage, arising from your use, or inability to use, the material in this presentation. The information is not a substitute for independent professional advice before making any investment decisions. Furthermore, you may not modify or reproduce in any form, electronic or otherwise, any information, images and maps in this presentation, unless you have obtained written permission from the management of Surge Battery Metals.

No securities commission or other regulatory authority has in any way reviewed the information in this presentation and Surge Battery Metals makes no representation or warranty to that effect.

## Forward-Looking Statements

This presentation contains forward-looking statements, including but not limited to comments regarding predictions and projections. Forward-looking statements address future events and conditions and therefore involve inherent risks and uncertainties. Actual results may differ materially from those currently anticipated in such statements. While Surge Battery Metals has taken reasonable care to ensure that information presented in this presentation is current, the Company expressly disclaims any responsibility to update or revise any forward-looking statements whether as a result of new information, future events or otherwise.

## Third Party Links

Surge Battery Metals has provided links and/or URLs in this presentation to several other websites which are arms-length to the Company. The viewer should be aware that in linking to these outside websites, they are leaving the Surge Battery Metals presentation and that the Company is not responsible for the content of any other website.

## Qualified Persons

Alan Morris, CPG, is the QP who has reviewed the technical contents of this presentation. Qualified Persons are defined in National Instrument 43-101 and based on standards established by the Canadian Institute of Mining, Metallurgy and Petroleum (CIM).

# Investor Highlights

- Highest Grade Lithium Clay Resource in the USA with 4.7Mt LCE grading 2,839 ppm Li at a 1,250ppm cutoff.
- Maiden Resource Estimate (MRE) includes over 4Mt of LCE grading 3,167 Li PPM at a 2,000 ppm Li cutoff.
- Led by seasoned lithium experts who sold Millennial Lithium, for \$490 US million in early 2022
- Laboratory Trials Produce Technical Grade Lithium Carbonate Exceeding 99% Purity
- Preliminary Economic Assessment (PEA) Expected Q4 2024
- Exploration Plan of Operation submitted Q4 2023 expect permit Q4 2024
- Well financed with CDN \$5 million in the treasury
- Geology similar to the \$4 billion USD Lithium Americas Thacker Pass deposit
- Recognized as one of the 2024 Top 50 performers on the TSX Venture Exchange.
- NASDAQ: AMLI | TSX.V:LI American Lithium as a strategic investor
- Flagship project located in Nevada, the epicenter of America's lithium battery industry

# Proven Management Team

Our team has the know-how to grow the Company rapidly and sustainably, from business building to strategy, marketing, capital markets and administration.

## GRAHAM HARRIS

### Chairman & Director

- Founder, Chair and Director of Millennial Lithium Corp. which was recently acquired by Lithium Americas for \$490M.
- More than four decades of experience in the finance industry.
- Co-founded Cap-Ex Iron Ore Ltd. and served as a founding director of M2 Cobalt Corp.

## GREG REIMER

### President & CEO

- 26 years in BC Government including Deputy Minister of Energy, Mines and Petroleum resources
- Former Executive Vice President of Transmission and Distribution for BC Hydro, British Columbia's electric utility
- Chair of the BC Oil and Gas Commission

## TED O'CONNOR

### Director

- Executive VP, with American Lithium Corp.
- Professional geoscientist
- Extensive knowledge of different styles of lithium mineralization

## DR. VIJAY MEHTA

### Director

- BSc in chemistry and a PhD in flotation technology.
- World-renowned expert in lithium mining, extraction, and processing,
- Five decades of experience consulting to the global lithium mining industry.

## IAIN SCARR

### Director

- Founder of IMEX Consultants, an industrial minerals consultancy
- 30 years at Rio Tinto, he served as Commercial Director and VP of Exploration

## ALAN MORRIS, CPG

### Geological Advisor

- Certified Professional Geologist with 37+ years in minerals industry.
- Resident of Elko Nevada
- Owner of Ruby Mountain GIS (property evaluations and acquisitions).

# SURGE BATTERY METALS

Nevada North Lithium Project has all the right characteristics to become a producer of Lithium

## Highest Grade Lithium Clay Resource in the USA

4.7Mt LCE grading 2,839 ppm Li at a 1,250ppm cutoff. MRE includes over 4Mt of LCE grading 3,167 Li PPM at a 2,000 ppm Li cutoff. The MRE only covers a portion of the known footprint of mineralization with substantial potential for growth.

## Proven Lithium Team

Company led by a board and management team of seasoned lithium experts with a strong track record of delivering significant shareholder value.

## Nevada Is Becoming The Epicenter Of America's Lithium Battery Industry

Featuring the \$4 billion Thacker Pass lithium mine-in-the-making, Tesla's massive giga-factory and Biden Administration anointing Nevada as a one of the 31 technology hubs to advance electric vehicle battery production.

# Nevada The Epicenter Of America's Lithium Battery Industry

Nevada currently has the highest lithium production potential of any state in the US. This world-class mining region is home to America's only current lithium production and one of the country's largest lithium deposits while being ideally positioned to supply domestic markets.



Mining-Friendly Regulations



Stable Political Environment



Producing Lithium Since 1966



Technology Hub  
Advancing electric vehicle battery production.



Top-Ranked Mining Jurisdiction  
Ranked #1 mining jurisdiction in the world by The Fraser Institute (2020)



Effective & Successful Reclamation  
Strong ethic towards restoring mined land to a natural or economically usable state



Local Demand Scaling Up  
Tesla's production target is 20M cars by 2030



# Nevada North Lithium Project

Mapping has identified regional rocks as being of similar age & composition as the McDermitt Tuff that hosts Lithium America's US \$4 billion Thacker Pass lithium deposit.

2022 8-hole drill program found high-grade lithium at or near surface –3254ppm lithium average

2023 12- hole drill program achieved the highest grades to date at 8,070 ppm Li and expanded the mineralization footprint by 100%

Exploration Plan of Operation submitted in Q4 2023

Maiden resource estimate [announced February 22, 2024](#)

Laboratory Trials Produce Technical Grade  $\text{Li}_2\text{CO}_3$  Exceeding 99% [announced April 9, 2024](#)

A Preliminary Economic Assessment is being targeted for Q4 of 2024



685 Mineral Claims

Total Area 5,216 hectares (12,890 acres) (20.13 sq miles)



Elko County, Nevada, USA  
Granite Range



Major power line ~13 km (~8 mi) to the east



Property access by ~32 km (~20 mi) of county- maintained gravel roads & ~5 km (~3 mi) of local roads



# 2022 & 2023 Drilling Programs

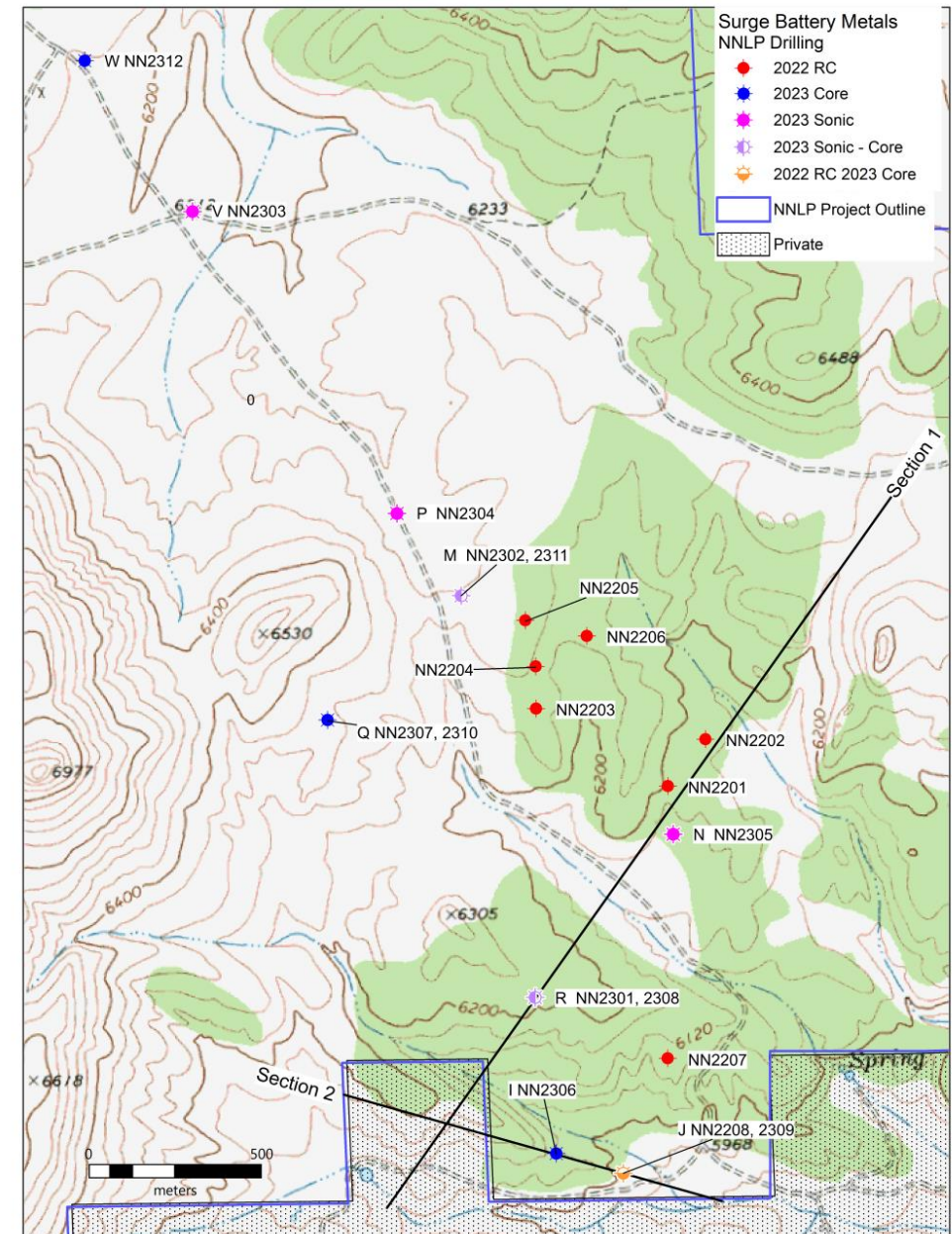
2022 8-hole drill program found high-grade lithium at or near surface –3254ppm lithium average

2023 12- hole drill program achieved the highest grades to date at 8,070 ppm Li and expanded the mineralization footprint by 100%

Average Lithium Grade 3,300 ppm

Highest Lithium Claystone Grade in the United States

Peers Resource Grade Ranges from 800 – 2100 ppm



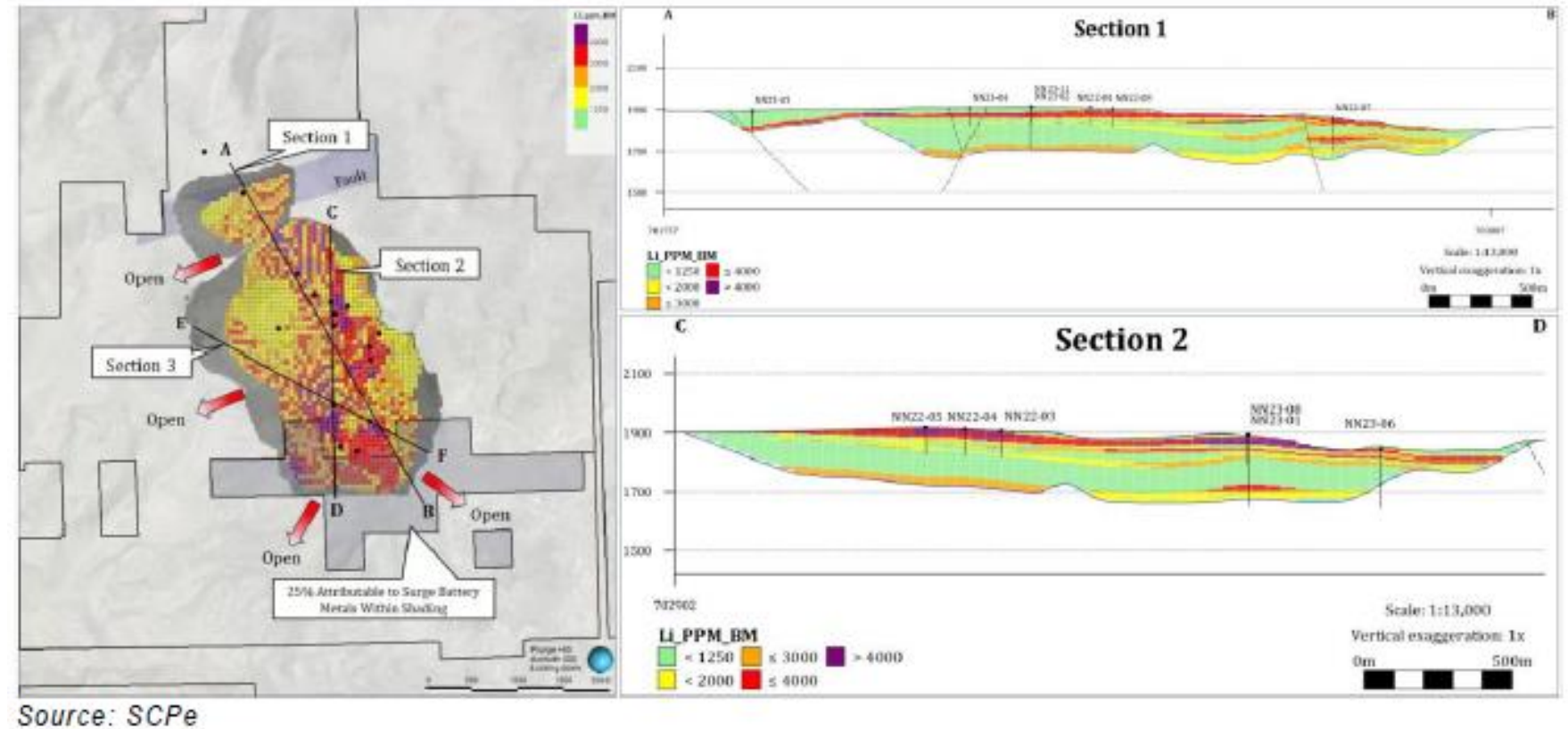


# Mineral Resource Estimate (MRE)

Highest Grade Lithium Clay Resource in the USA with 4.7Mt LCE grading 2,839 ppm Li at a 1,250ppm cutoff.

MRE includes over 4Mt of LCE grading 3,167 Li PPM at a 2,000 ppm Li cutoff.

Significant Expansion Potential: The MRE only covers a portion of the known footprint of mineralization with substantial potential for growth.



# Key Catalysts for 2024

In 2024, Surge plans to complete the following:

## Metallurgical and Flowsheet Test Work – Completed ✓

The first stage of metallurgical testing on clays from the Nevada North Lithium Project (NNLP) has achieved the goal of producing lithium carbonate at a dry-basis purity greater than 99% Li<sub>2</sub>CO<sub>3</sub>.

## Surface Exploration Programs

In 2024, Surge plans to complete a detailed surface mapping program over the property and additional soil sampling. Combined, these will help identify additional areas of outcropping clay units and help to improve our geological understanding.

## Spring / Summer Expansion Drilling

2024 drilling at the NNLP will include the private land within the claim boundary and will test for lithium mineralization 1km to the west and up to 1.2km to the south of the 2024 Mineral Resource Area.

## Preliminary Economic Assessment (PEA)

Surge expects to undertake a PEA study on the NNLP with an anticipated target reporting date in Q4 of 2024.

# IMPORTANT LITHIUM BEARING CLAY DEPOSITS

Company	Ganfeng	Arizona Li	*LAC	Ioneer	American Li	Surge	Century	Spearmint	Noran Li	Jindalee
Project	Sonora	Big Sandy	Thacker	Rhyolite R.	TLC	Nevada N	Clayton V.	McGee	Zeus	McDermitt
Location	Mexico	Arizona	Nevada	Nevada	Nevada	Nevada	Nevada	Nevada	Nevada	Oregon
Study	1Q18 FS	'19 MRE	4Q22 DFS	'20 DFS	'23 PEA	SCPe	'21 PFS	'22 MRE	'21 PEA	'23MRE
Basin	Sierra M.	Big Sandy	McDermitt	Tonopah	Tonopah	Jarbidge	Clayton V.	Clayton V.	Clayton V.	McDermitt
Resource (Mt)	559	33	1,754	360	2,538	309	1,541	477	1,269	3,010
Resource grade (ppm Li)	2,962	1,850	2,036	1,750	791	2,839	882	823	928	1,340
Resource (Mt LCE)	8.8	0.3	19.0	3.4	10.7	4.7	7.2	2.1	6.3	21.5
EV/in-situ (US\$/t LCE resource) (A)	-	160	28	45	14	9	4	2	1	2
Reserve / Inventory (Mt)	244	--	217	60	301	--	213	--	245	--
Reserve / Inventory grade (ppm Li)	3,480	--	3,160	1,800	1,209	--	1,129	--	1,093	--
Reserve / Inventory (Mt LCE)	4.5	--	3.7	0.6	1.9	--	1.3	--	1.4	--
Processing method (s)	Roasting	n.a	Acid leach	Acid leach	Acid leach	Acid leach	Acid leach	Acid leach	Acid leach	Acid leach
Acid Consumption (H2SO4 kg/t)	n.a	n.a	490	n.a	>480	328-574	127	375	250	500
Basic EV (US\$m)	9,990	51	531	150	153	45	32	4	9	34
EV/in-situ (US\$/t LCE reserve / inv.)	-	-	145	262	79	-	25	-	6	-

Source: SCP, Factset, company filings; \*LAC before GM Tranche 2 + ATVM loan. (A) American Li & Arizona Li excl. secondary assets; Ioneer on 100% basis

# Inflation Reduction Act – IRA

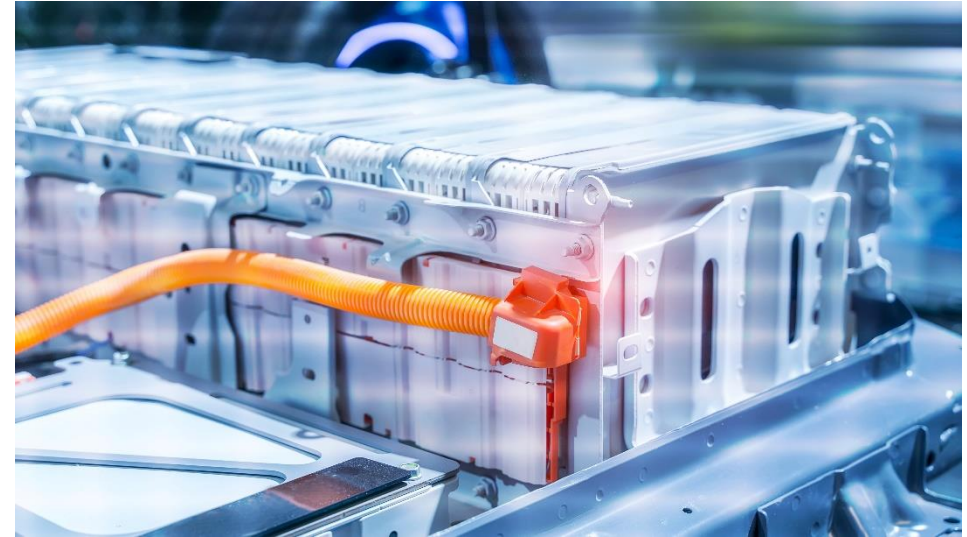
Signed into law, earmarking \$70 billion towards EV and battery supply chains across the United States.

2024, 40% of Critical minerals used in batteries are going to have to be sourced from North America or US trading partners to qualify \$7,500 tax credit.

That percentage rises to 80% by the end of 2026.

Minerals or components sourced in certain countries, including Russia and China, will make vehicles ineligible for subsidies.

Also starting in 2024, 50% of battery components will have to be manufactured or assembled in North America, rising to 100% by the end of 2028.

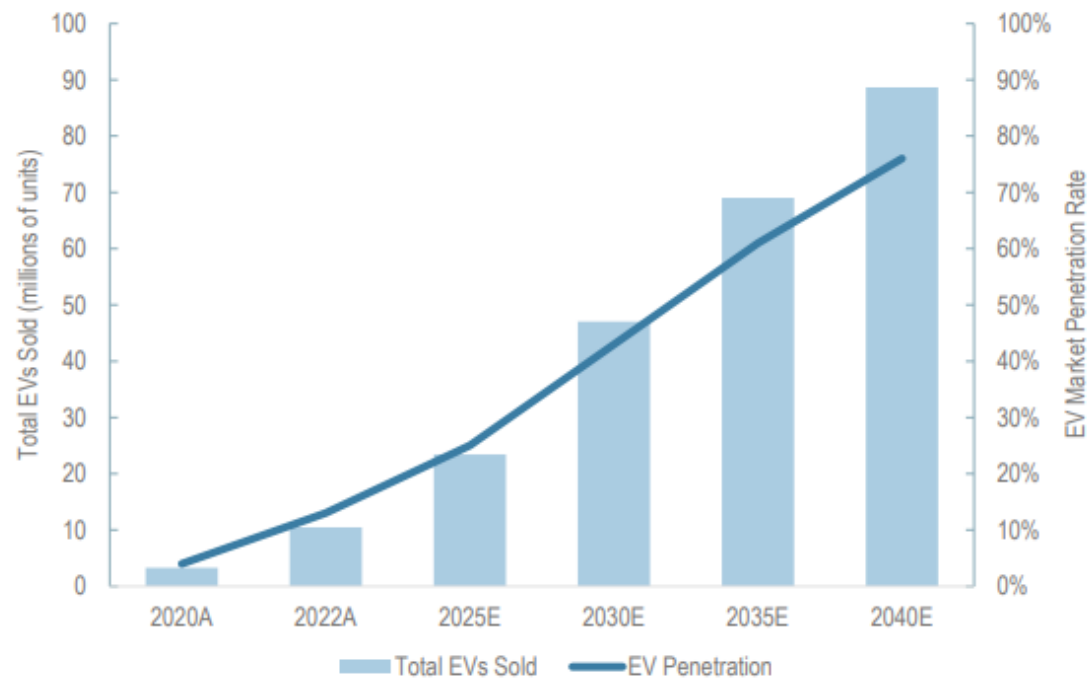


# Investment in New Sources of Supply Required to Meet Demand

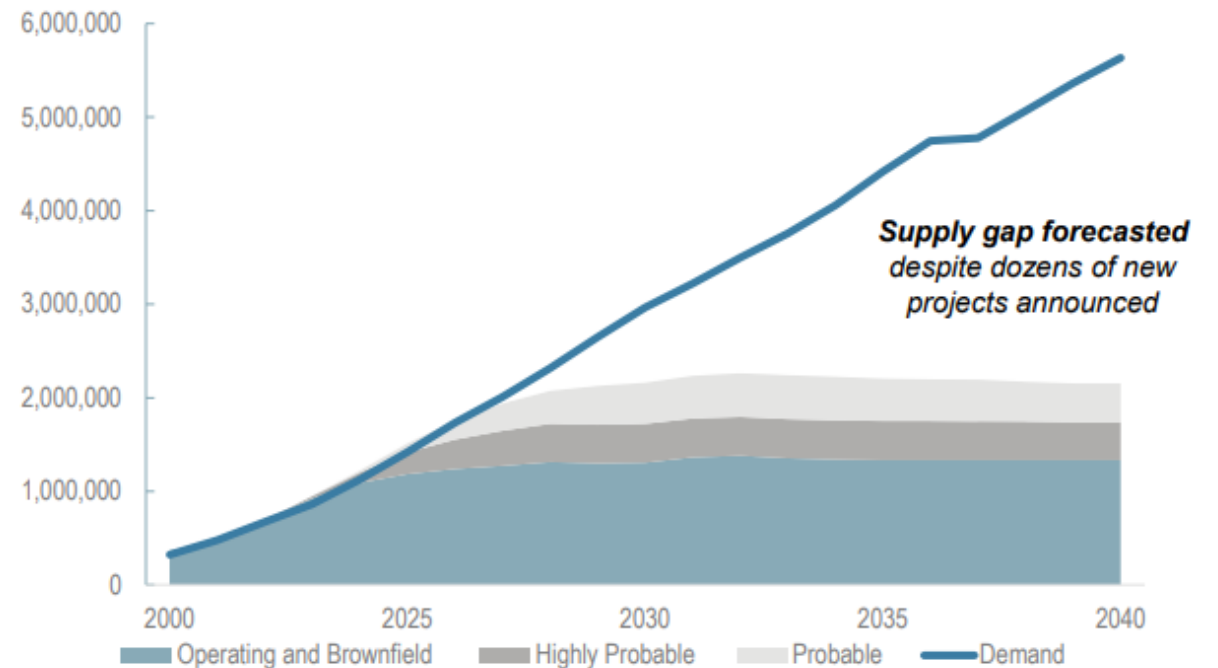
2024 Forecast: batteries are expected to account for 88% of the 1.2 million tonne demand

2026 Forecast: lithium mined by companies with industry leading or good ESG practices is set to meet 45% of demand but drop to 35% by 2030.

**Global EV Adoption to Drive Lithium Demand**  
EV Sales Expected to Increase by ~80% (2022 vs. 2040)<sup>(1)</sup>



**Significant Supply Gap Forecasted**  
Every Known Project Needed to Meet Forecasted Demand<sup>(2)</sup>



1. Rho Motion Q3 2023 forecast.  
2. Benchmark Minerals Q2 2023, weighted.

# COMMITMENT TO ESG

## Environment

Minimizing our environmental impact  
Biological surveys completed at Nevada North Lithium Project  
Environmental Baseline inventory completed  
Water stewardship: hydrological surveys underway  
Going above and beyond requirements

## Social

Committed to the long-term prosperity of nearby communities  
Cultural surveys have been completed  
Support for community enhancement  
Prioritization for sourcing local jobs, goods, & services

## Governance

We are managed fairly and transparently  
Highest ethical and legal standards



# Analyst Coverage



**Joe Reagor**

(949) 720-7106

jreagor@roth.com



**Brandon Gaspar**

(437) 533-3142

bgaspar@scp-rf.com



**Shannon Gill**

(416) 943-6729

sgill@cormark.com



**Sid Rajeev**

(604) 682-7050

sidr@researchfrc.com



**Marcus Giannini**

(604) 697-9344



# Share Structure

## Share Structure

Issued & Outstanding:	<b>161,073,658</b>
Options Outstanding:	<b>8,003,000</b>
Warrants Outstanding:	<b>33,694,688</b>
RSU's Outstanding	<b>6,609,000</b>
PSU's Outstanding	<b>6,609,000</b>
Fully Diluted:	<b>215,989,346</b>



Transfer Agent

**Odyssey Trust Company**

835-409 Granville Street Vancouver BC,  
Canada, V6C 1T2



Auditor

**DMCL Chartered Professional Accountants**

Suite 2700 – 650 West Georgia street,  
Vancouver BC, Canada V6B 4N9



Legal

**Christopher Dewick Farber BA LLB**  
PO Box 91819, West Vancouver Station, West  
Vancouver, BC V7V4S11





# SURGE

## BATTERY METALS

[info@surgebatterymetals.com](mailto:info@surgebatterymetals.com)

[www.surgebatterymetals.com](http://www.surgebatterymetals.com)

(604) 662-8184

300-1455 Bellevue Avenue  
West Vancouver, BC V7V 3P3

TSXV: **NILI** | OTCQX: **NILIF** | FRA: **DJ5**

VENTURE

**50**

**2024**