

KODIAK  COPPER

TSX-V: KDK
OTCQB: KDKCF
FRA: 5DD1

Discovering Tomorrow's Copper Today

AI-Assisted Critical Minerals Exploration in
North America

April 2024

DISCOVERY
GROUP

Forward Looking Statements

This presentation contains "forward-looking statements". These forward-looking statements are made as of the date of this presentation and Kodiak Copper Corp. does not intend, and does not assume any obligation, to update these forward-looking statements. Forward-looking statements include, but are not limited to, statements with respect to the timing and amount of estimated future exploration, success of exploration activities, expenditures, permitting, and requirements for additional capital and access to data. Forward-looking statements involve known and unknown risks, uncertainties and other factors which may cause the actual results, performance or achievements of the Company to be materially different from any future results, performance or achievements expressed or implied by the forward-looking statements. Such factors include, among others, risks related to actual results of current exploration activities; changes in project parameters as plans continue to be refined; the ability to enter into joint ventures or to acquire or dispose of property interests; future prices of mineral resources; accidents, labour disputes and other risks of the mining industry; ability to obtain financing; and delays in obtaining governmental approvals or financing.

This presentation does not constitute an offer to sell or solicitation of an offer to buy any securities Kodiak Copper Corp.

Figures may not sum due to rounding. Decimal figures do not indicate added level of precision. Mt=million tonnes

Historic information reported herein was obtained from publicly available sources and industry reports. Kodiak believes this information to be from reliable sources using acceptable industry practices at the time, but the Company has not independently verified and cannot guarantee the accuracy of the historic information disclosed, therefore readers should use caution in placing reliance on such information. Management also cautions that Kodiak has not performed any exploration on the MPD Project to date. Comparisons to adjacent or similar mineral properties, deposits and mines are provided for information purposes only. Kodiak has no interest in, or rights to explore or mine any such properties and references to other deposits reported herein are not indicative of deposits or results obtained on the Company's properties.

Jeff Ward, P.Geo, is the Qualified Person as defined by NI 43-101 standards responsible for reviewing the technical content of this presentation.

Track Record of Discovery & Shareholder Returns



Christopher Taylor, M.Sc.
Chairman



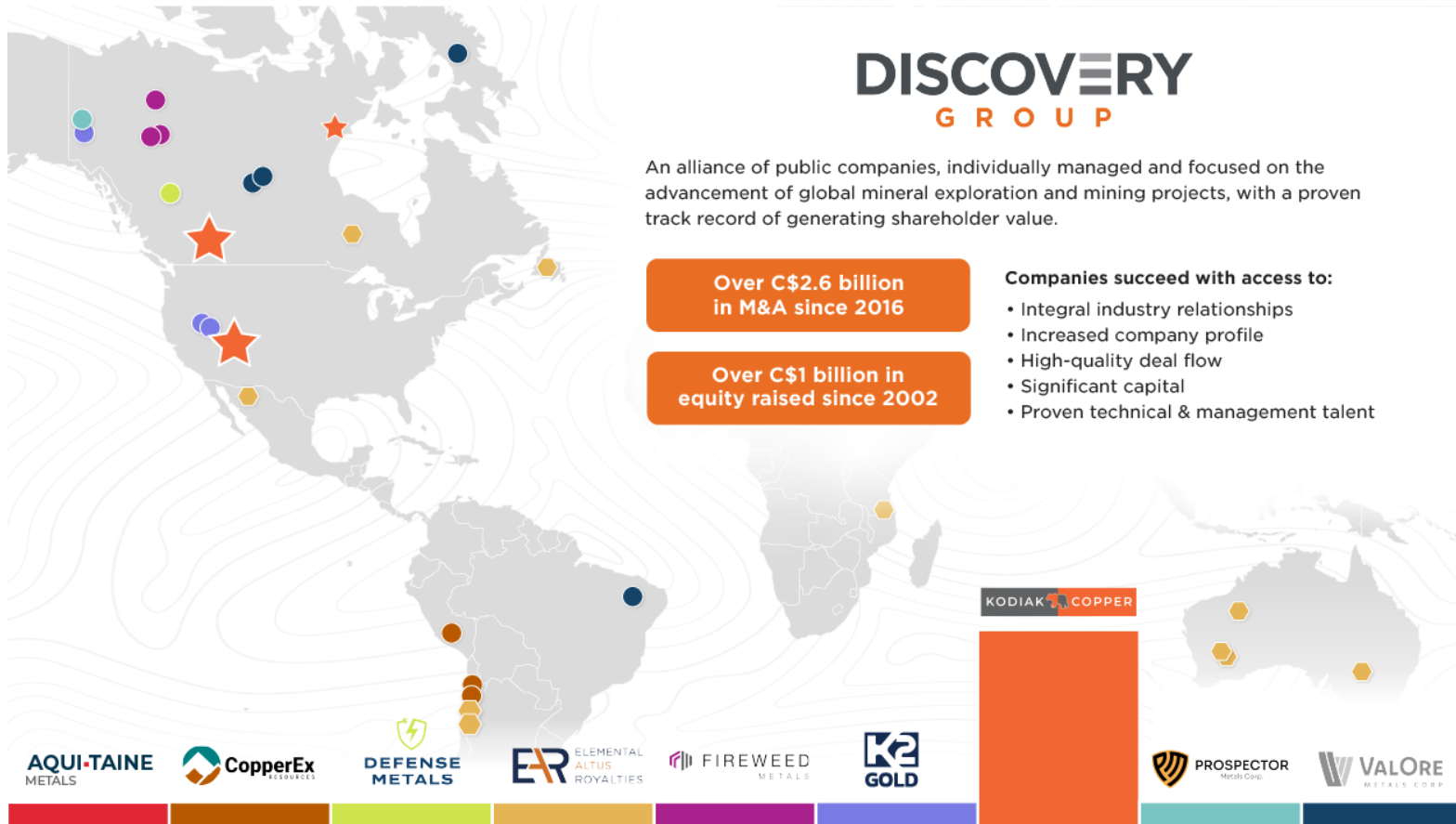
Claudia Tornquist, M.Eng., MBA
President & CEO



John Robins, P.Geo.
Advisor



DISCOVERY GROUP – Access to Expertise, Contacts, Capital

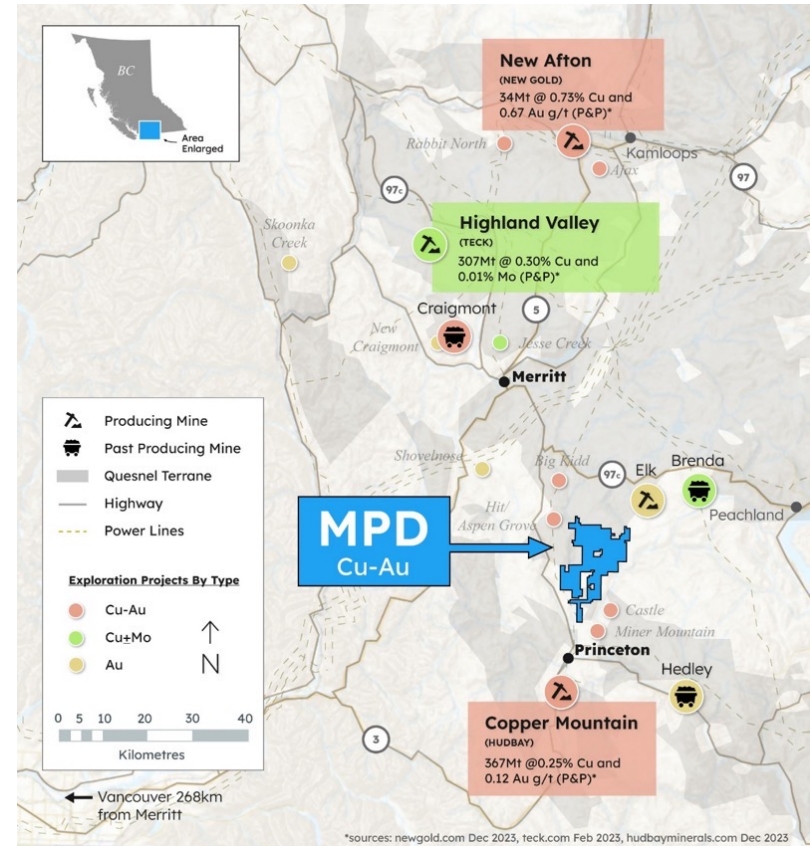


MPD - Large Copper-Gold Porphyry Project Located in World-Class Mining District

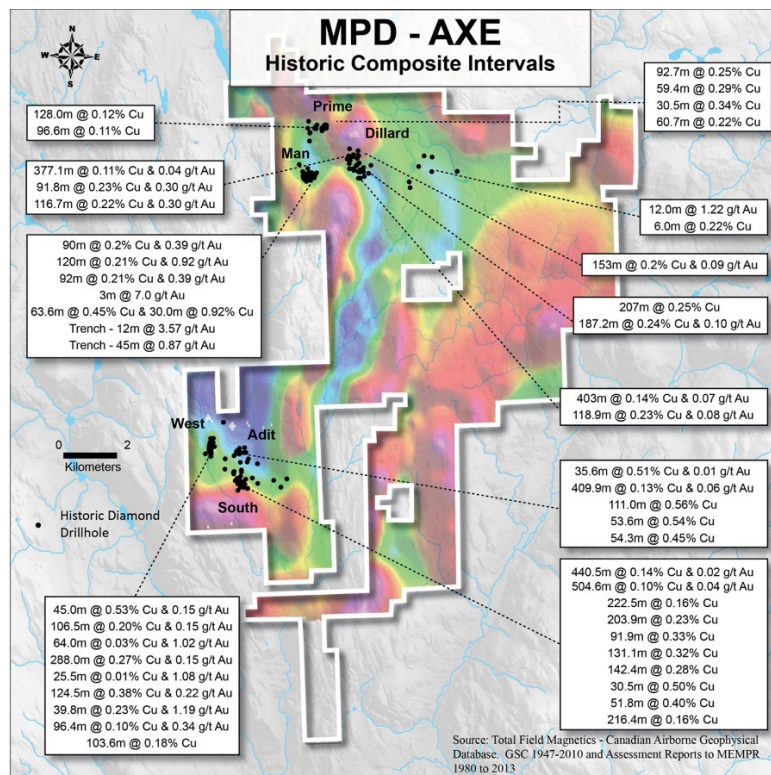
- Large, 226 km² land package in southern British Columbia
- In a known, productive belt; large copper and gold mines nearby
- Accessible year-round, great infrastructure, local workforce
- Low-risk jurisdiction, high standards for environmental / community



Copper Mountain Mine

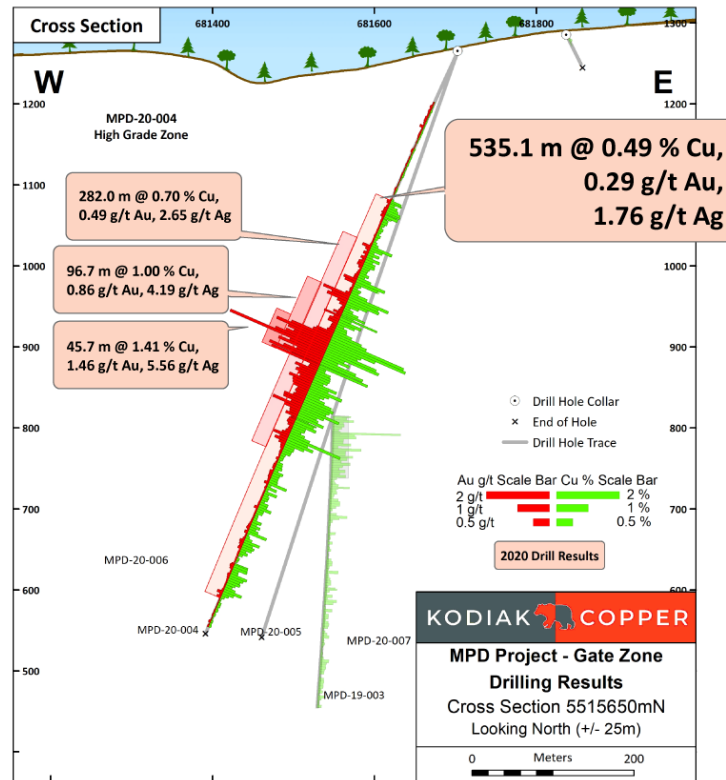


Good Historic Drill Results Over Large Footprint, Never Explored as Single Project with Modern Methods



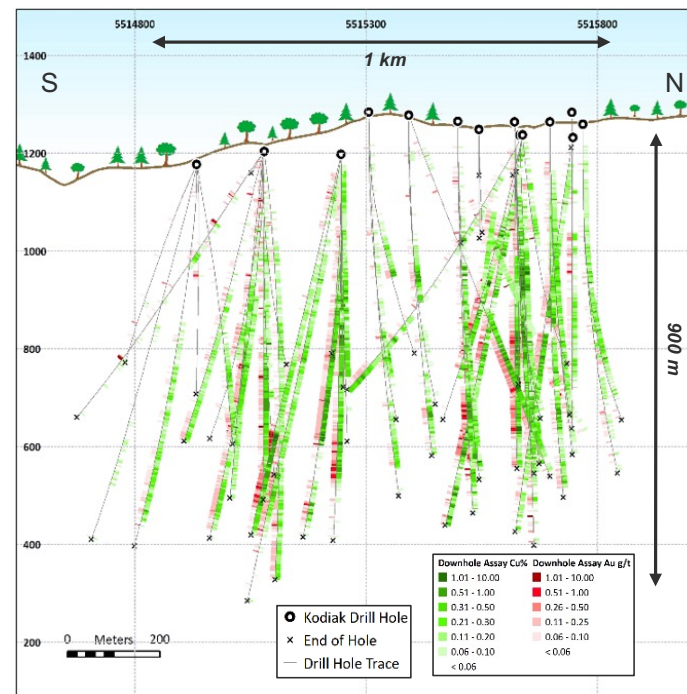
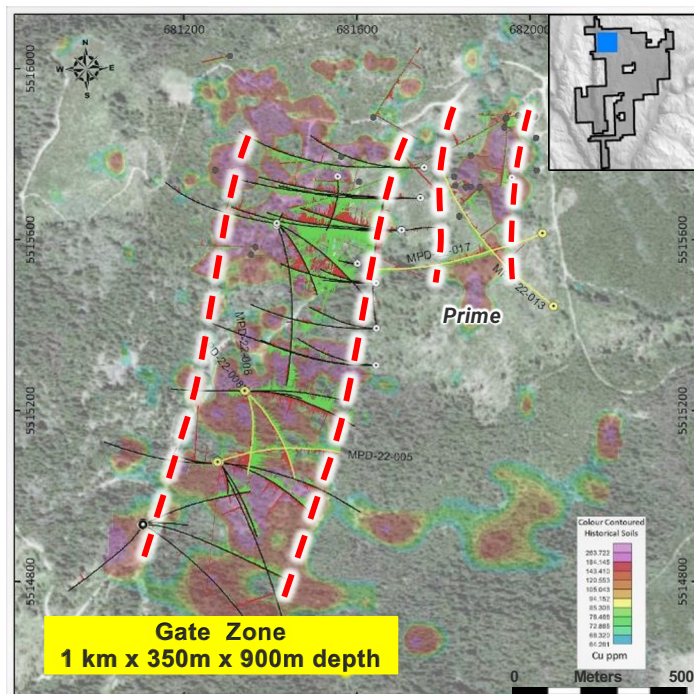
- 393 holes (50,357 m) of historical drilling
- Since the 1960's, many different operators
- Copper/gold drilled over large area (>14km²)
- Historic drill holes mostly very shallow

Transformative Discovery of High-Grade Gate Zone in 2020; Teck Invests \$8 million



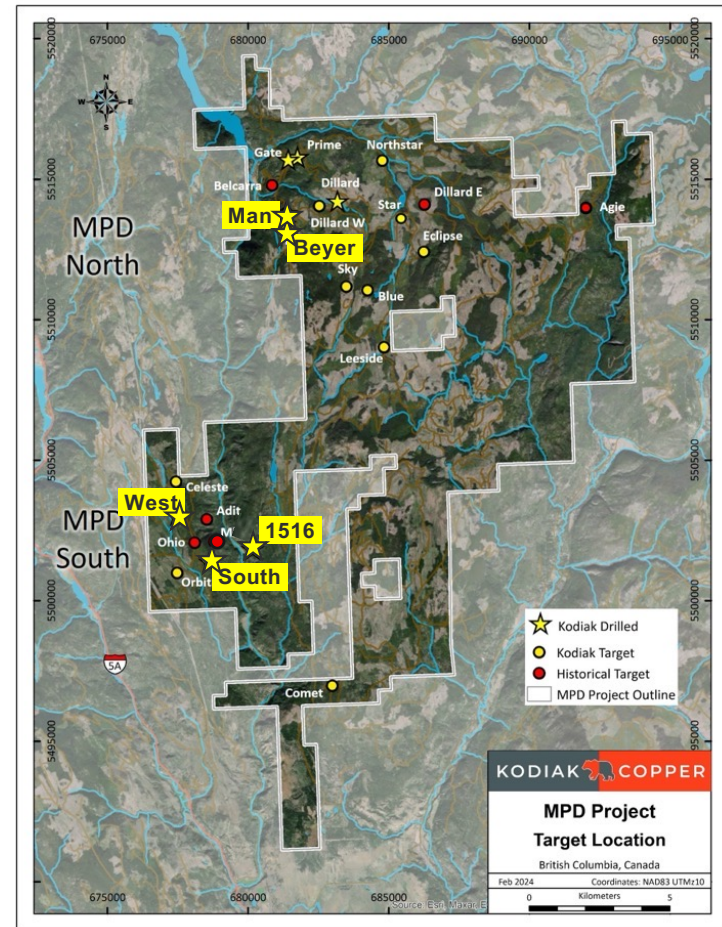
* news releases 22/10/20 and 3/9/20

Large Drill Programs in 2021 & 2022 Totaling 48,000 Metres Successfully Prove Big, High-grade Porphyry Centre at Gate Zone



Large Drill Program in 2023 to Demonstrate District-Scale Potential – 18,562m Drilled

- Tested 5 targets in 2023
- Significantly expanded mineralization - several kilometre-scale mineralized zones
- 24 target areas identified so far – only 8 drilled by Kodiak to date
- 2024 program planned -using innovative AI technology to assist drill targeting



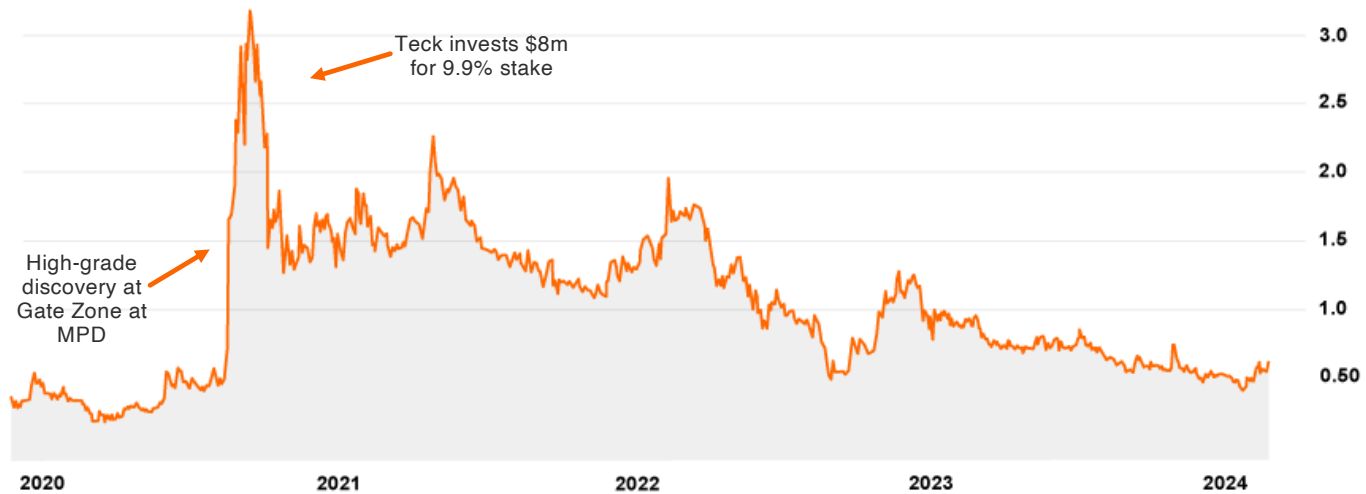
Kodiak Copper Corp. (as of April 1st, 2024, all C\$)

Share Price	\$0.66
Market Cap	\$42 M
Shares Outstanding	64.1 M
Options (avg. exercise price \$0.95)	5.6 M
Warrants (exercise price \$1.10)	4.1M
Fully Diluted Shares	73.8 M
Cash Position	\$3 M

KDK Ownership	
Insiders & Management	7.8%
Teck Resources	9.9%

Analyst Coverage

Cormark Securities - Stefan Ioannou



KODIAK  **COPPER**



Scan for more
information

Contact Information

1020 - 800 West Pender
Street, Vancouver, BC,
V6C 2V6

Phone: +1 604 646 8362

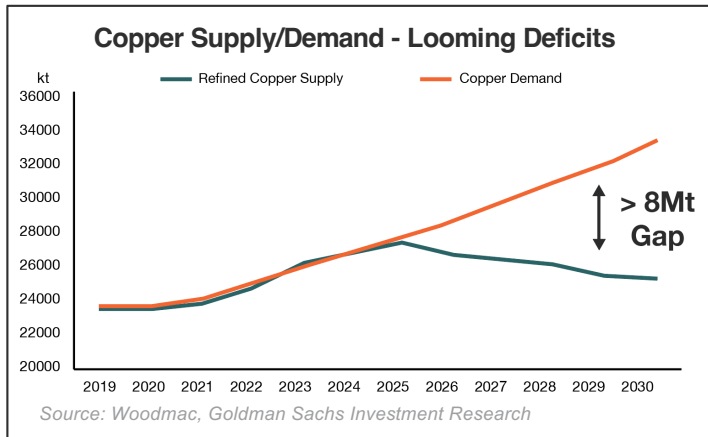
Email: IR@kodiakcoppercorp.com

www.kodiakcoppercorp.com

TSX-V: KDK OTCQB: KDKCF FRA: 5DD1

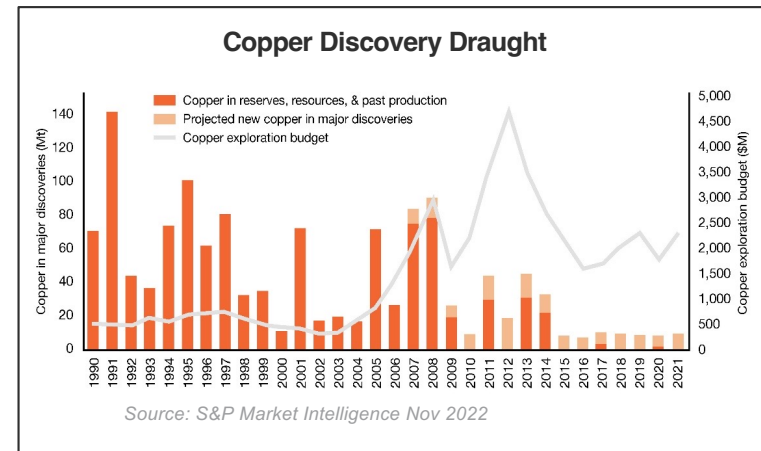
DISCOVERY
GROUP

Copper Deficits Looming

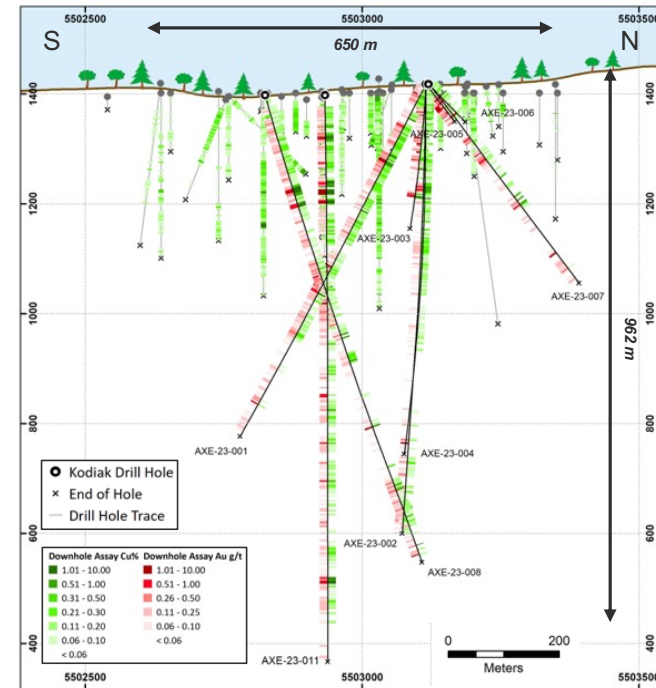
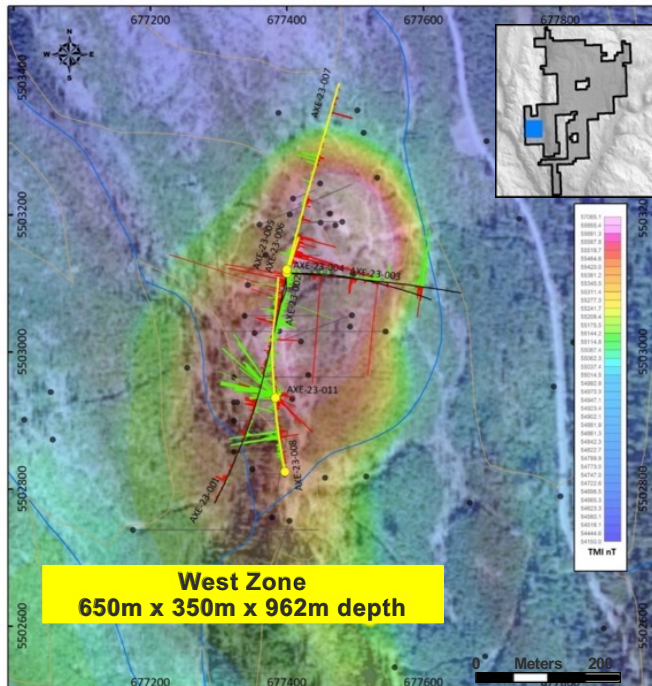


“Copper projects are notoriously large-scale in size, and the pipeline of new projects is the lowest in a century” - Mining.com

“To enable any plausible growth in emission-free energy, more copper will be required in the next 25 years than was consumed in the last 500 years.”
Rio Tinto



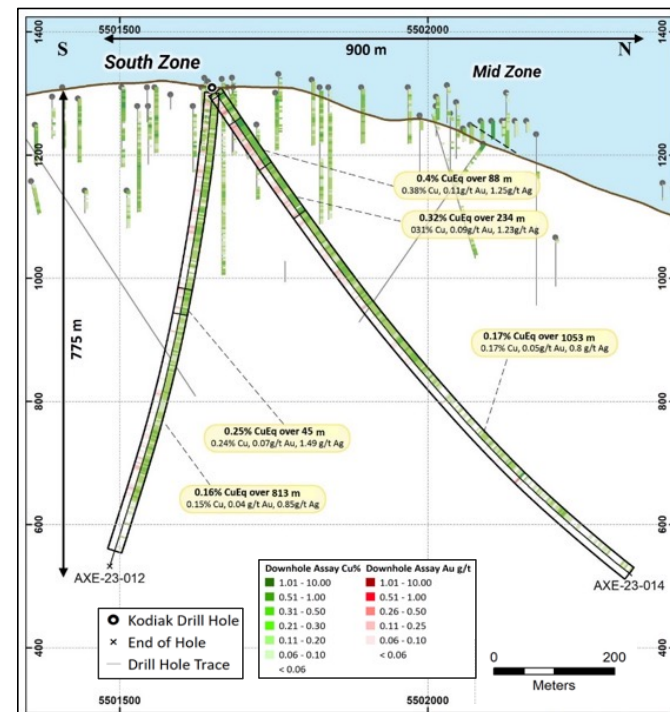
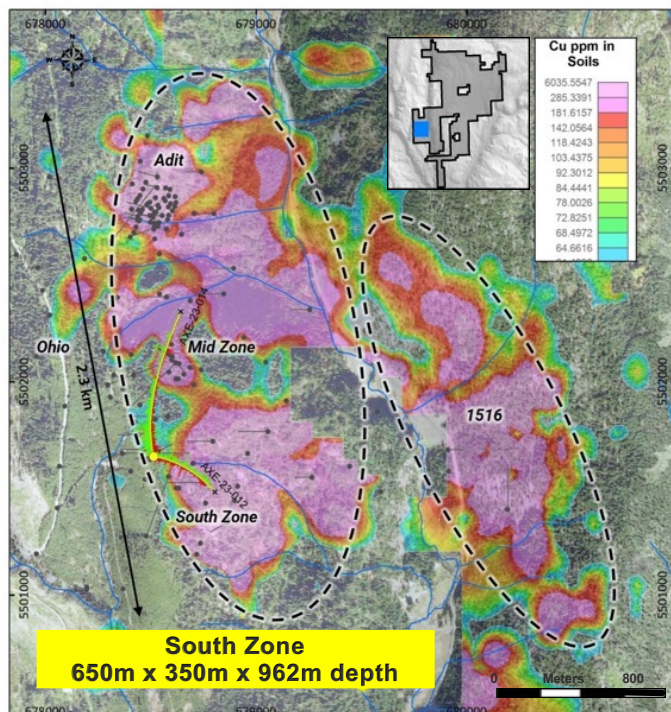
West Zone - Discovery of High-grade Porphyry Mineralization From Surface to Significant Depth, Open to Extension



- Best drill hole: 0.49% Cu (0.58% CuEq*) over 254m, within 0.21% Cu (0.27% CuEq*) over 941m starting at bedrock surface
- Shallow high-grade copper, including 1.26% CuEq* over 39 metres
- Hydrothermal breccias with copper mineralized clasts, suggesting additional mineralization at depth

* news release 17/10/23

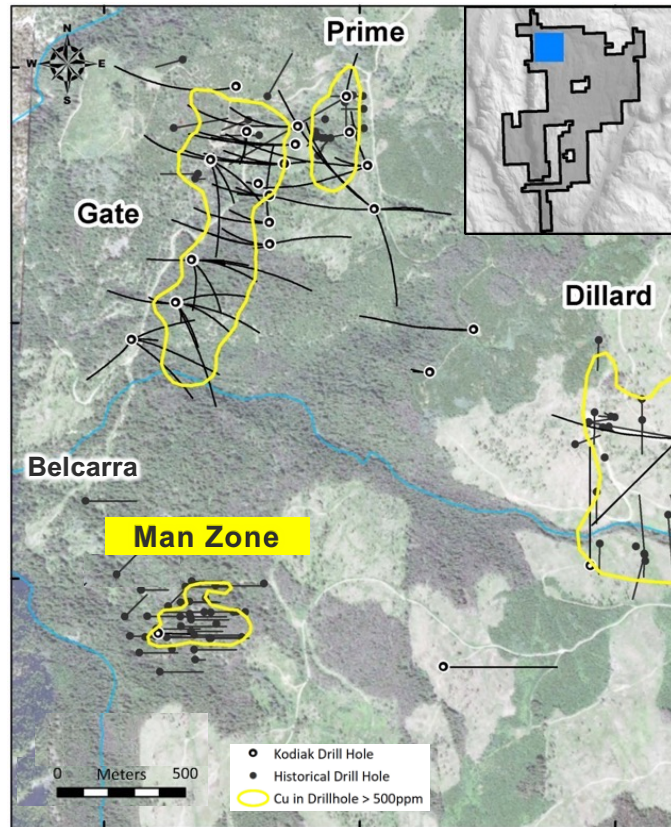
South Zone – Intervals of Over 1 Kilometre of Porphyry Mineralization from Surface; Potential for Much Larger Zone



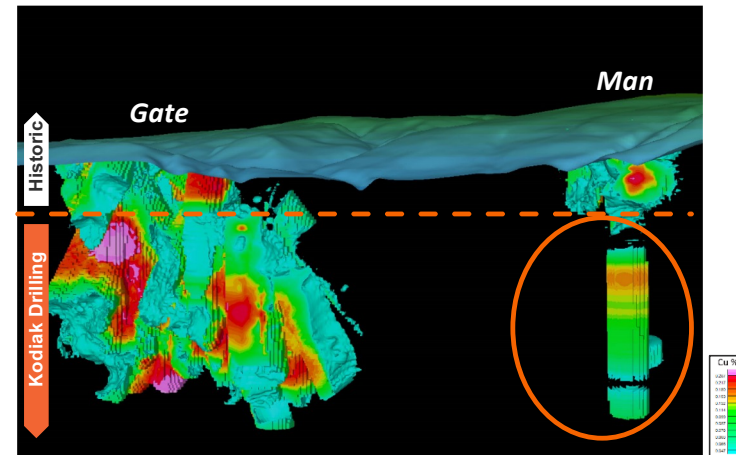
- Data suggests that the **South, Mid and Adit Zones** may be part of much larger system that comprises all three zones
- **Best drill hole:** 0.32% CuEq* over 234m from bedrock surface, within 0.17% CuEq* over 1053m

* news release 7/12/23

Man Zone - First Two Holes in 2023 Significantly Extend Mineralization from Surface to 995m Depth



- Significant, near-surface copper-gold mineralization
- ~1km from southern end of Gate Zone and along strike – exploration potential inbetween
- Drill highlight: 0.34% Cu (0.45% CuEq*) over 116m from bedrock surface, within 0.17% Cu (0.24% CuEq*) over 337m



* news release 8/11/23

2024 Exploration Program Commencing Soon - More Discovery Potential to Be Unlocked at MPD

- 24 target areas identified so far – only 8 drilled by Kodiak to date
- Several targets to be drilled in 2024
- Using innovative AI technology to assist drill targeting

