

Q2 2024

# LEADING THE CHARGE FOR ELECTRIFICATION

EXPLORING NORTH AMERICA'S TOP COPPER DISTRICTS



CSE: **REDC**

[redcanyonresources.com](http://redcanyonresources.com)



# Cautionary Statement

Investors are cautioned that, except for statements of historical fact, certain information contained in this document includes “forward-looking information”, with respect to a performance expectation for Red Canyon Resources. Such forward-looking statements are based on current expectations, estimates and projections formulated using assumptions believed to be reasonable and involving a number of risks and uncertainties which could cause actual results to differ materially from those anticipated. Such factors include, without limitation, fluctuations in foreign exchange markets, the price of commodities in both the cash market and futures market, changes in legislation, taxation, controls and regulations of national and local governments and political and economic developments in Canada, the United States and other countries where the company carries-out or may carry-out business in the future, the availability of future business opportunities and the ability to successfully integrate acquisitions or operational difficulties related to technical activities of mining and reclamation, the speculative nature of exploration and development of mineral deposits located, including risks in obtaining necessary licenses and permits, reducing the quantity or grade of reserves, adverse changes in credit ratings, and the challenge of title. The Company does not undertake an obligation to update publicly or revise any forward-looking statements or information, whether as a result of new information, future events or otherwise, unless so required by applicable securities laws. Some of the results reported are historical and may not have been verified by the Company.

All technical information in this presentation have been reviewed and approved by Wendell Zerby, P. Geol. A qualified person as defined by National Instrument 43-101.

All technical information connected to the Peak and Scraper Springs properties contained in this presentation is derived from the NI 43-101 technical report on the Peak Property dated May 1, 2023 prepared by Derrick Strickland, P.Geol and the NI 43-101 technical report on the Scraper Springs Property dated August 21, 2023 prepared by Scott Close, M.Sc., P.Geol, both of which may be found on SEDAR+ at [www.sedarplus.ca](http://www.sedarplus.ca).

\* The qualified person has not verified the information on the adjacent properties and the information disclosed is not necessarily indicative of mineralization on the Project.

# GLOBAL ALLIANCE OF EXPLORATION COMPANIES

**CONDUIT  
NICKEL**



ConduitNickel.com

**REDCANYON  
RESOURCES**

CSE: REDC



RedCanyonResources.com

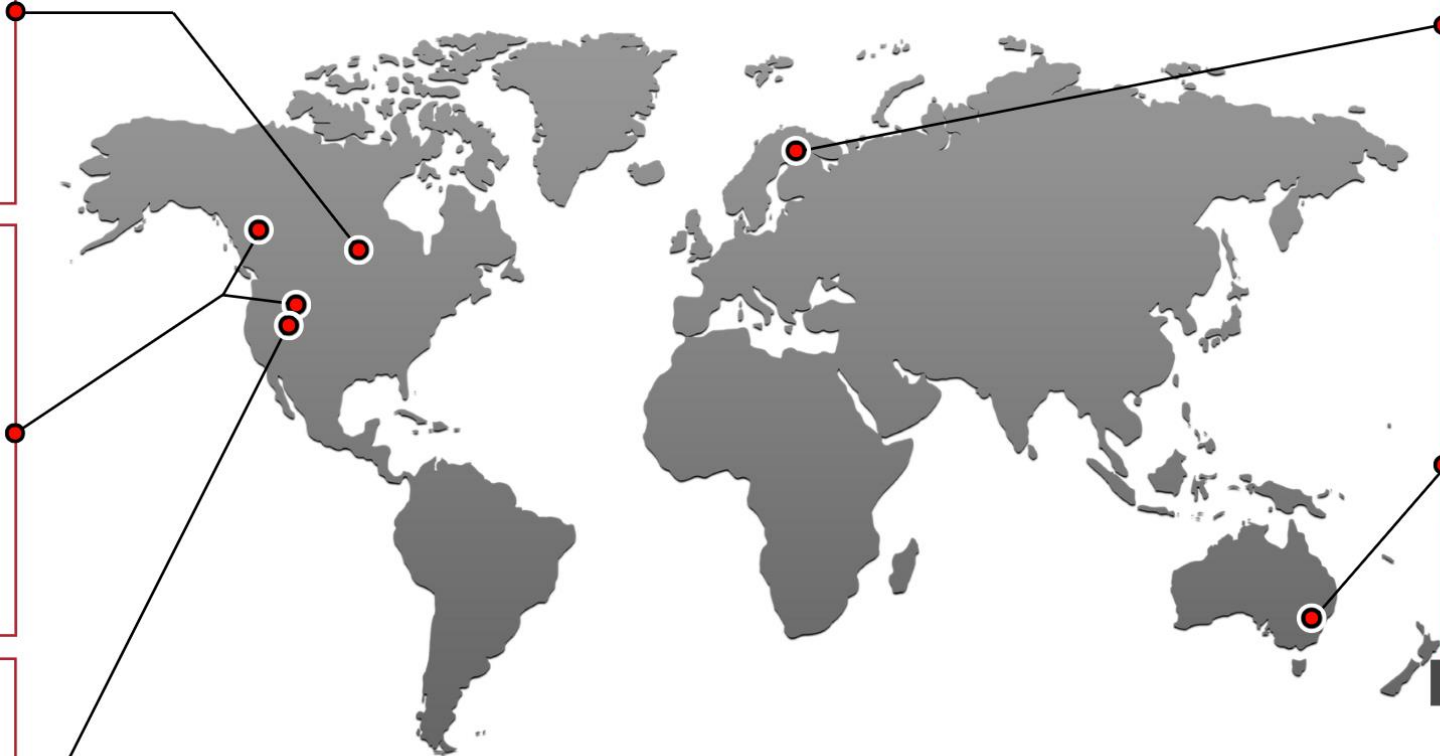
**HEADWATER  
GOLD INC.**

CSE: HWG | OTCQB: HWAUF



HeadwaterGold.com

Earn-in agreements with Newmont



**FINEX  
METALS**



FinExMetals.net

**INFLECTION  
RESOURCES**

CSE: AUCU | OTCQB: AUCUF | FSE: 5VJ



InflectionResources.com

Earn-in agreement with AngloGold Ashanti

**CLEARVIEW  
GOLD**



SUCCESSFULL EXIT:  
May 2023

**NEWQUEST  
CAPITAL**

WWW.NQCAPITALGROUP.COM



# Copper is the Most Critical Metal

## **Large, diverse market - EV, battery, infrastructure**

- not impacted, manipulated like specialty metals

## **It is the next “Oil”**

- Markets will embrace: Producers, developers and explorers of copper

## **There is no viable substitute**

- If there is electrification – the world needs more copper

## **And...it is set to be massively in deficit**

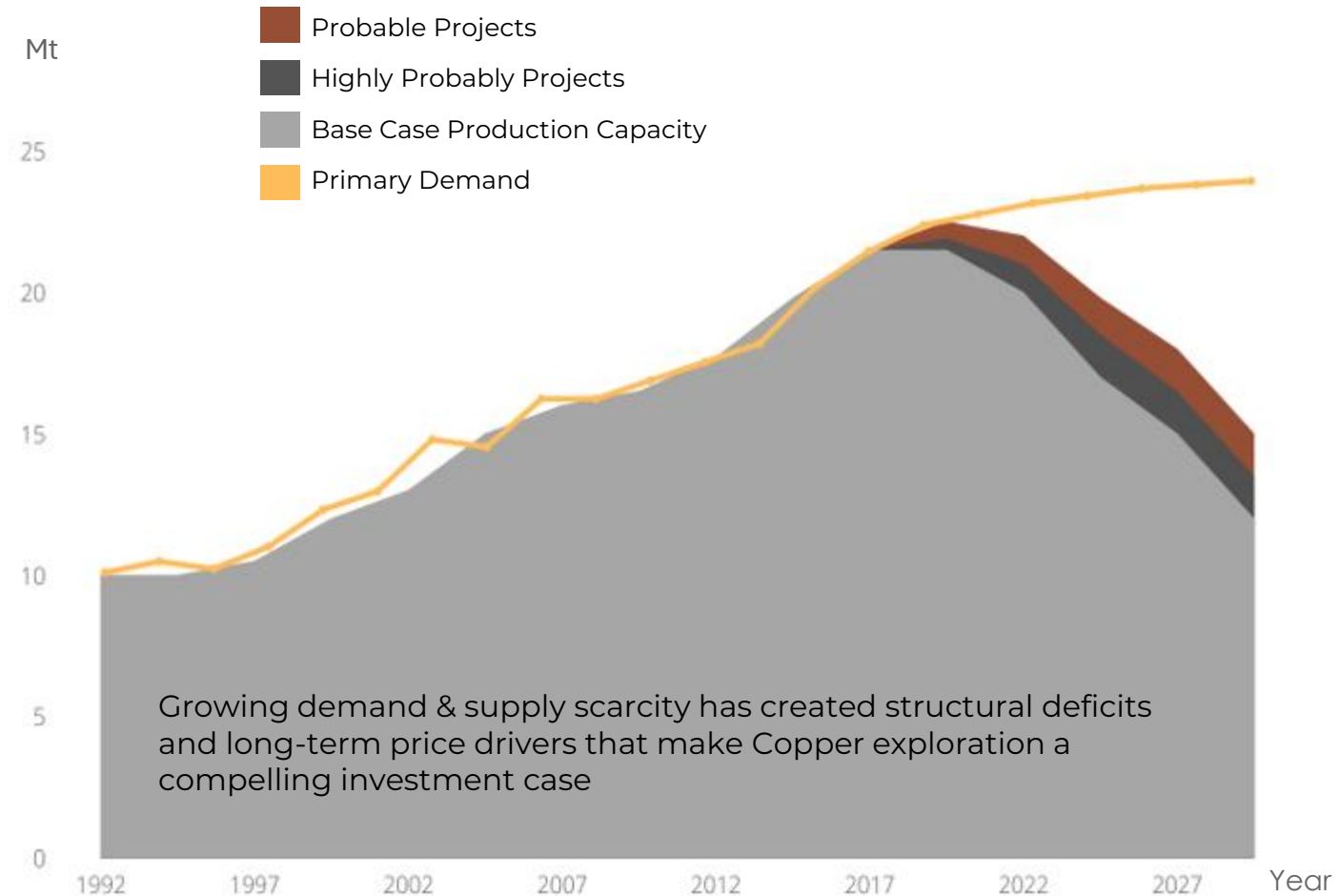




# Why Invest in Copper Exploration?

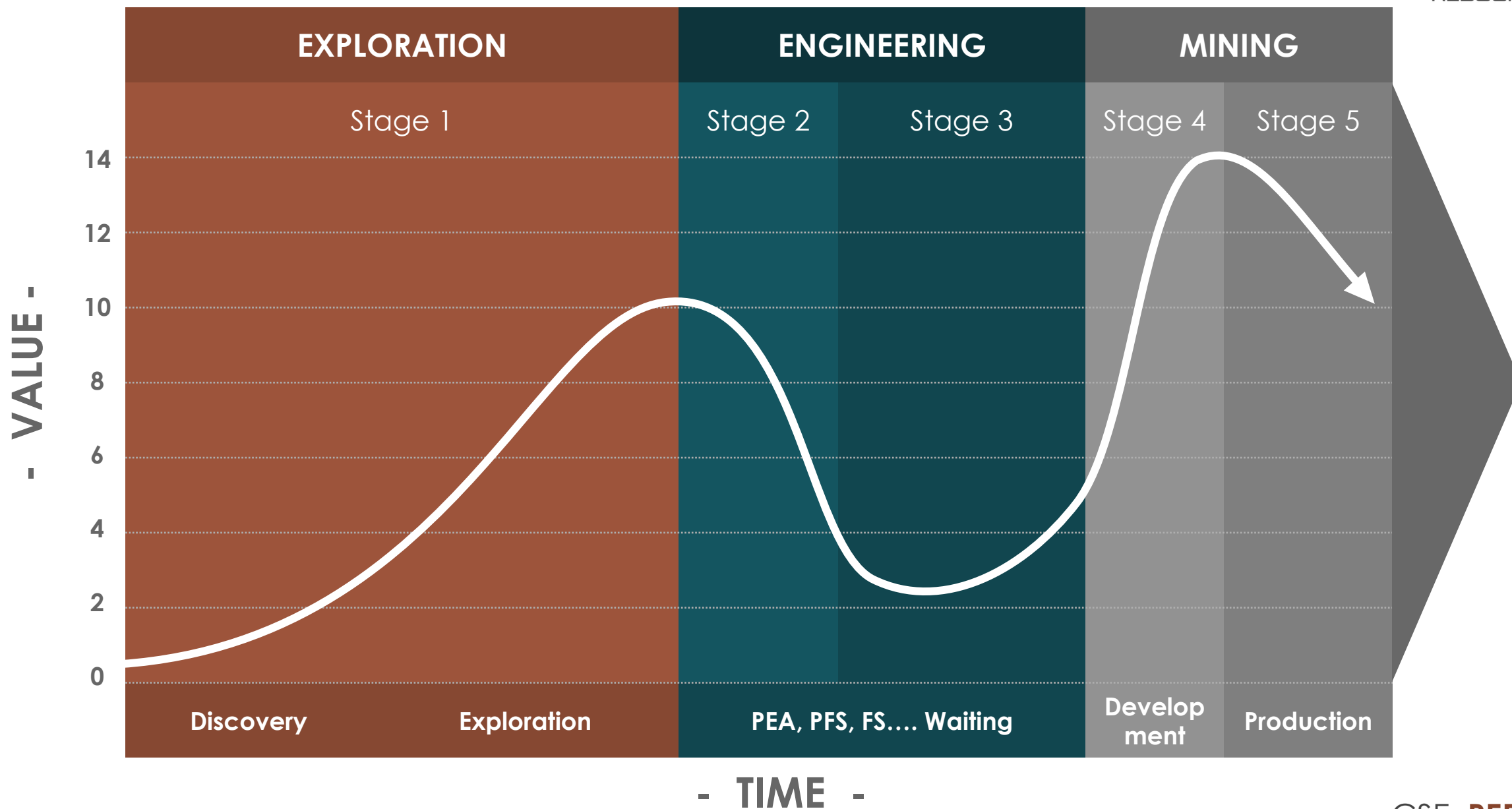
## The Supply Reality

- Copper market will go into deficit
- New sources of copper are not readily available
- A 6 Mt deficit is forecast by 2030\*
- The 10 largest Cu mines produce 4.7Mt of copper annually
  - Therefore 10+ new world class copper mines need to come online before 2030 – this will not happen





# Mineral Exploration to Mining Life Cycle





# Small Cap Cycles – Now is the time



Source: Canaccord Genuity, TSX-V



# Investment Highlights

## Team

Technically driven team of geoscientists & capital market experts

- ✓ history of discovery and development success

## Exposure to Impactful Critical Metal Discovery Potential

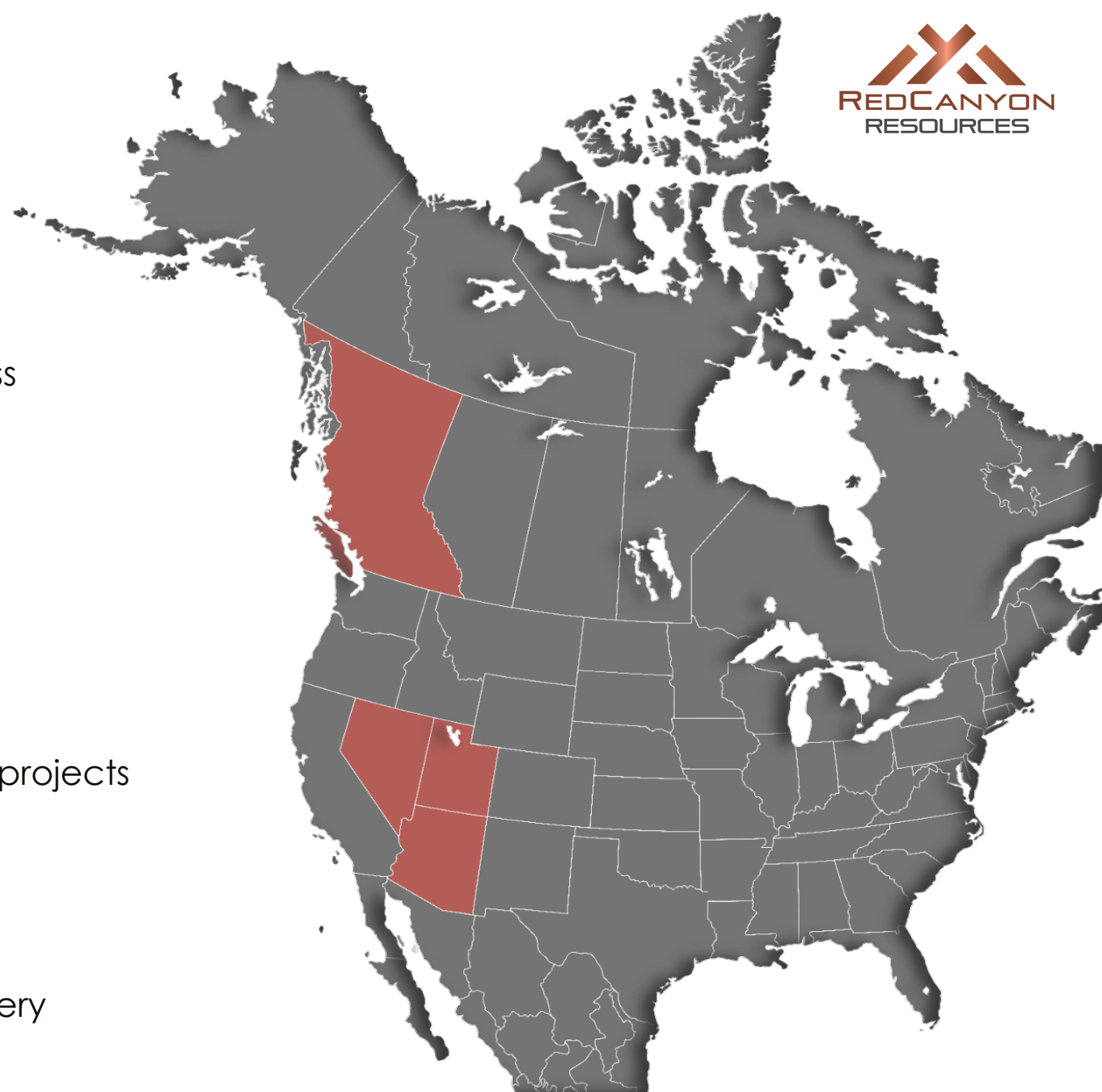
Seven 100% owned Copper projects

- ✓ Four advanced and drill ready
- ✓ Highly leveraged to discovery
- ✓ Innovative geoscience deployed
- ✓ High margin potential projects only
- ✓ Hybrid model - drill test independently and JV projects

## Quality Jurisdictions

Exploring North-America's top Copper districts

- ✓ Infrastructure is a first consideration
  - ✓ Improves potential for high margin discovery



# Capital Structure

**34.9M**

Outstanding Shares

**24.1M**

Management

**4.6M\***

Warrants

**2.8M\***

Options

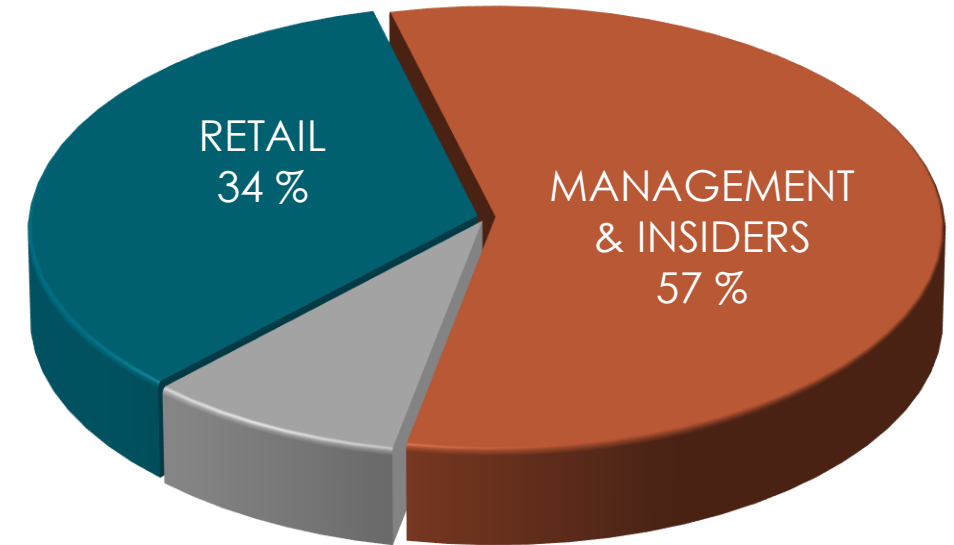
**\$7.2M\***

Market Cap

**\$~1.0M\***

Cash

\* As of April 22, 2024



INSTITUTIONAL  
9%



**NEWQUEST**  
CAPITAL

Red Canyon Resources is a NewQuest Capital Group company  
Visit: [www.nqccapitalgroup.com](http://www.nqccapitalgroup.com) for more information



# Team



## Wendell Zerb BSc, P. Geol | **Chairman & CEO**

- 30+ years of combined experience in capital markets, mining and mineral exploration / development
- Former President and CEO of Exeter Resource Corp, bought by Goldcorp/Barrick in 2017

## Caleb Stroup MSc, AIPG | **US Technical Lead & Director**

- Geologist with over 15 years experience, focused expertise in the Western US
- Former senior Geologist for Kinross Gold; currently CEO of Headwater Gold

## Alistair Waddell BSc (Hons.), MAusIMM | **Director**

- 25+ years of diverse international mineral exploration experience
- Former VP Greenfields Exploration for Kinross Gold Corp
- Currently CEO of Inflection Resources and Chairman of Headwater Gold

## Cecil R. Bond CPA, CA | **Director**

- Chartered Professional Accountant with over 25 years of global experience in the junior resource and mining industry, serving as a director or senior executive of companies listed on the TSX, TSX-V, ASX, AIM and NYSE markets.

## Dr. Craig J.R. Hart PhD, FSEG, FGAC | **Chief Geoscientist**

- Internationally recognized exploration geoscientist; specialized in Cu - Au porphyry and Intrusive hosted Gold systems
- Former Director of MDRU-Mineral Deposit Research Unit at the University of British Columbia (UBC)
- Chairman of Snowline Gold

## Christopher J. Wild P. Eng | **Exploration Manager**

- 35+ years experience in mining and mineral exploration
- Former Project Manager/Chief Geologist for KGHM, Ajax Copper Project; Chief Mine Geologist for Imperial Metals Mount Polley Copper-Gold Mine.

## Lauren M. Roberts PE | **Director**

- Professional Mining Engineer with over 30 years of experience in the global mining industry.
- Previously held senior positions for Kinross Gold, Barrick Gold and Hecla Mining

## Sandra Wong CPA, CGA | **CFO & Corporate Secretary**

- Chartered Professional Accountant with 20+ years of experience with TSXV and CSE listed companies

# Advisors



## **Dr. Alan Wilson** | PhD, CGEOL Technical Advisor and Principal Consultant

- Over 30 years experience, including senior roles with a number of the world's largest mining companies
- Expert in Alkalic Copper Gold porphyry systems

## **Tero Kosonen** | MSc. Economics Advisor

- Co-Founder of NewQuest Capital, a private equity/venture capital group, non-Executive Director for Inflection Resources & Headwater Gold. And Chairman of Finex Metals.
- 25 years of experience in management roles, entrepreneurial ventures & investments in natural resources.

## **Yale Simpson** | B.A.Sc. Corporate Advisor

- 35 years experience as a senior geologist, exploration manager, CEO, and Chairman of companies involved in Australia, Africa, Canada, Eastern Europe and South America
- Co-Chairman of Extorre Gold Mines Ltd and Exeter Resource Corp., both acquired by major mining companies

## **Dr. Dan Core** | PhD Technical Advisor

- Co-founder of Fathom Geophysics, which specializes in geophysical and geoscience processing and targeting services to the mineral sector.
- Dan has extensive experience targeting for an array of mineral deposit types, including copper porphyry systems



# North-American Focus

## British Columbia

Premier Copper-Gold district with active large-scale mining operations



## Western United States

Multiple Copper jurisdictions with world-class operating mines



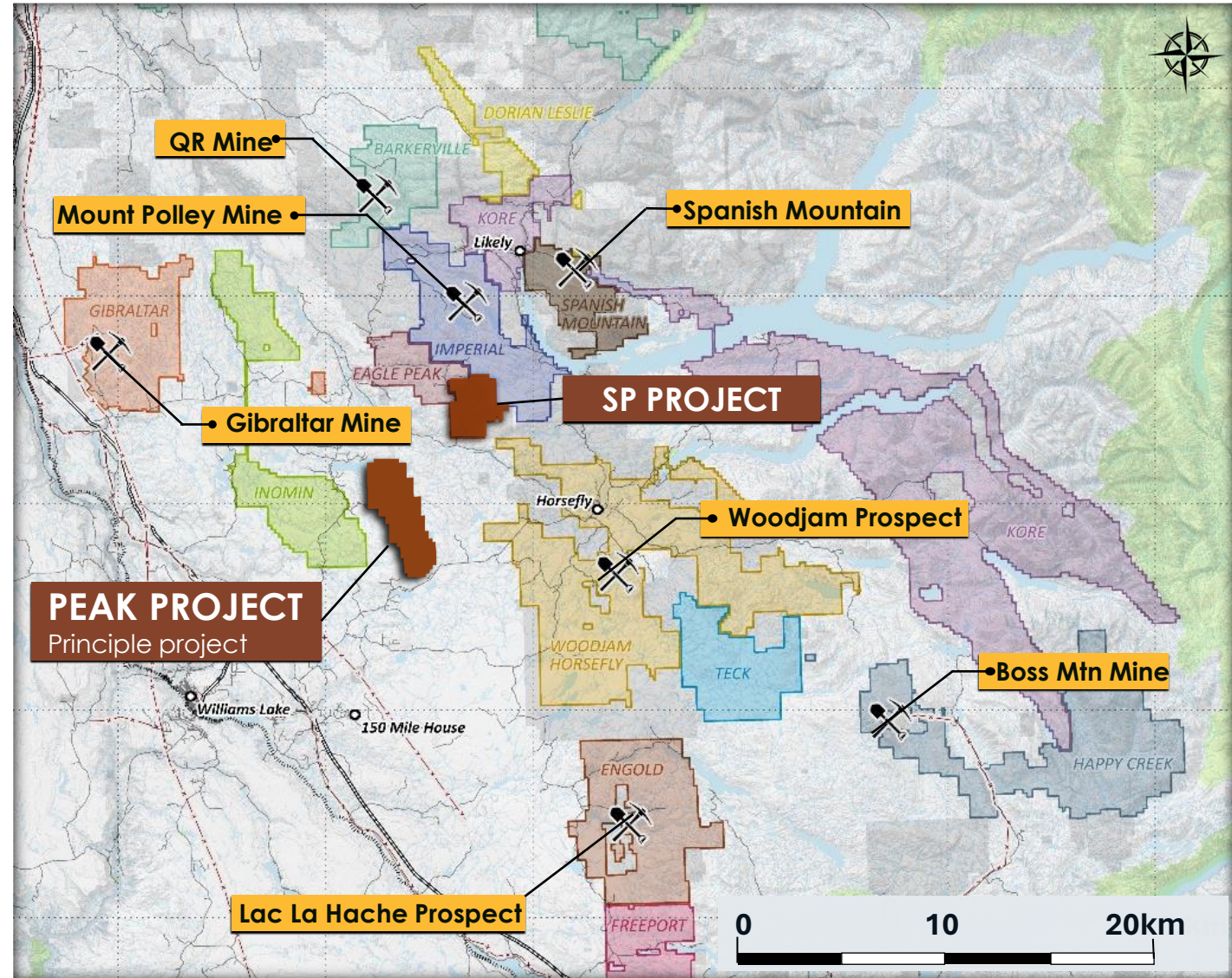


# Peak Project Area

Multiple historic and operating  
Copper-Gold, Gold, and  
Copper – Moly mines

Excellent infrastructure - power,  
roads, labour, cost effective  
exploration

Strong mining and forestry culture





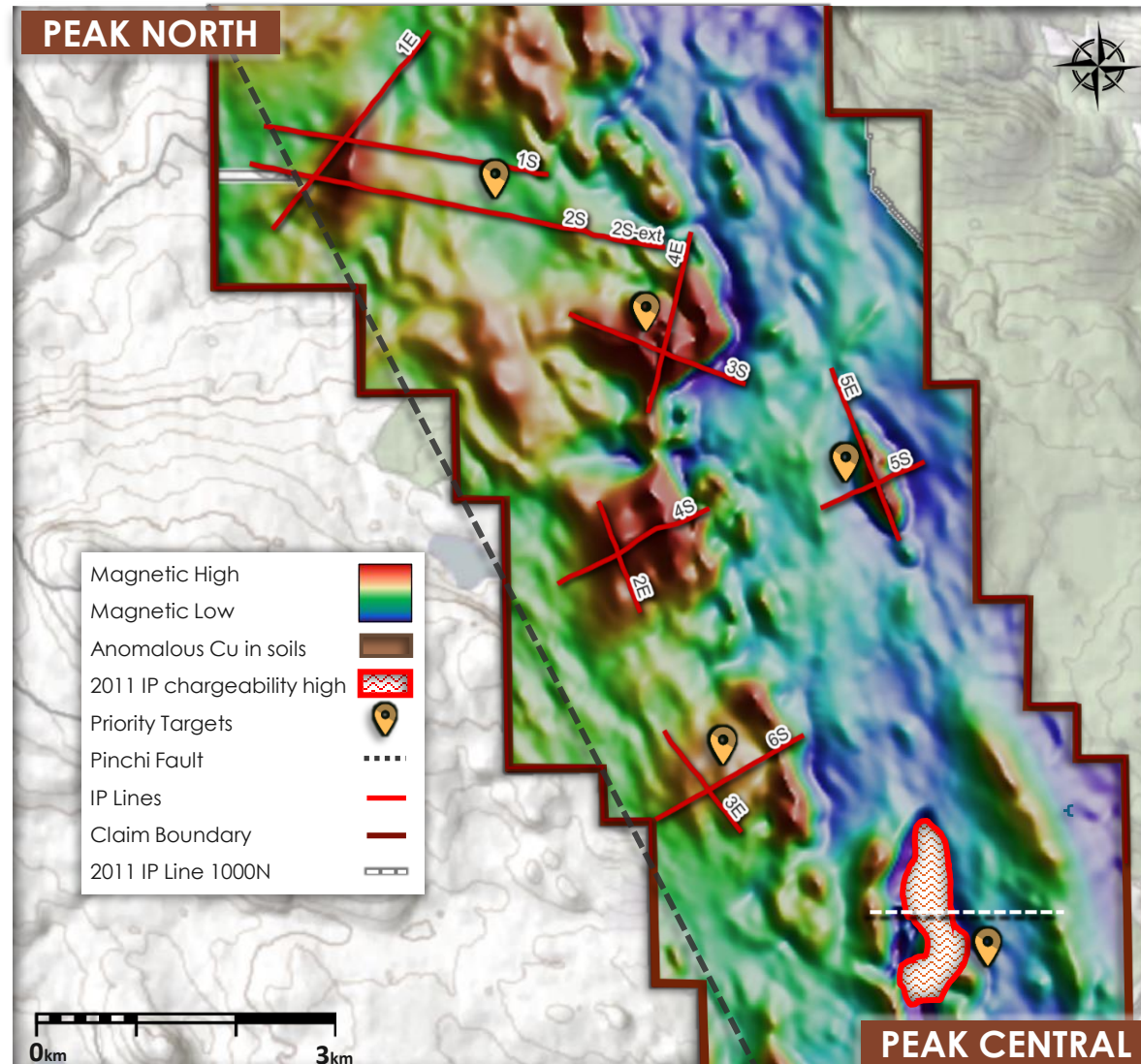
# Peak Project

STRATEGIC LAND POSITION	
6,718 HECTARES	100% OWNED

Drill program starting  
May 2024

Multiple untested  
targets along important  
structural setting for Cu-  
Au porphyry systems

Excellent infrastructure



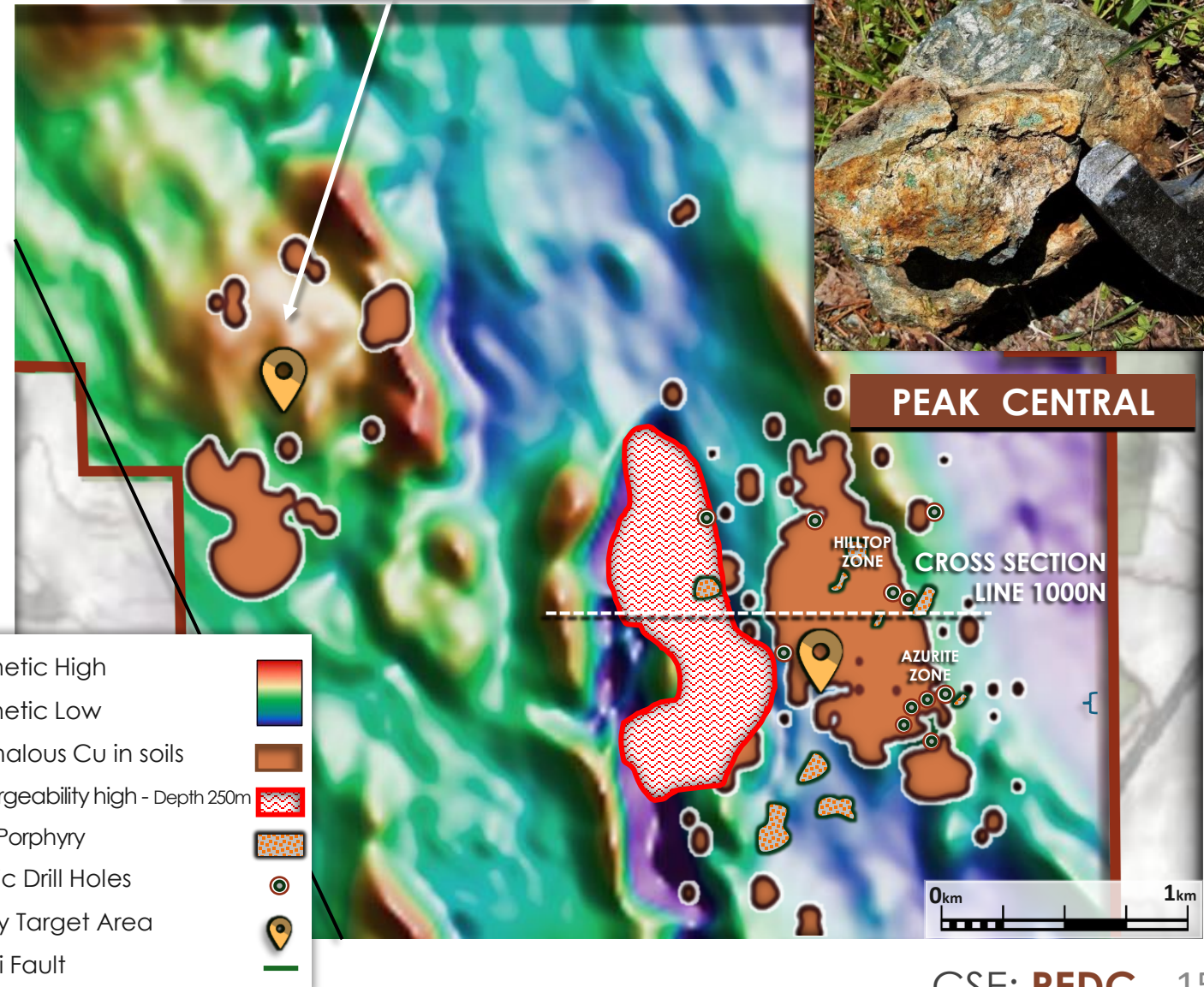
# Peak Central

Peak Central hosts a significant, coincident IP chargeability high and magnetic high/low interface in an area hosting altered and mineralized porphyritic rocks

Surface rock samples returned grades over 2.0% Cu

Rock chip sampling returned 25 metres grading 0.44% Cu

New 6S target area



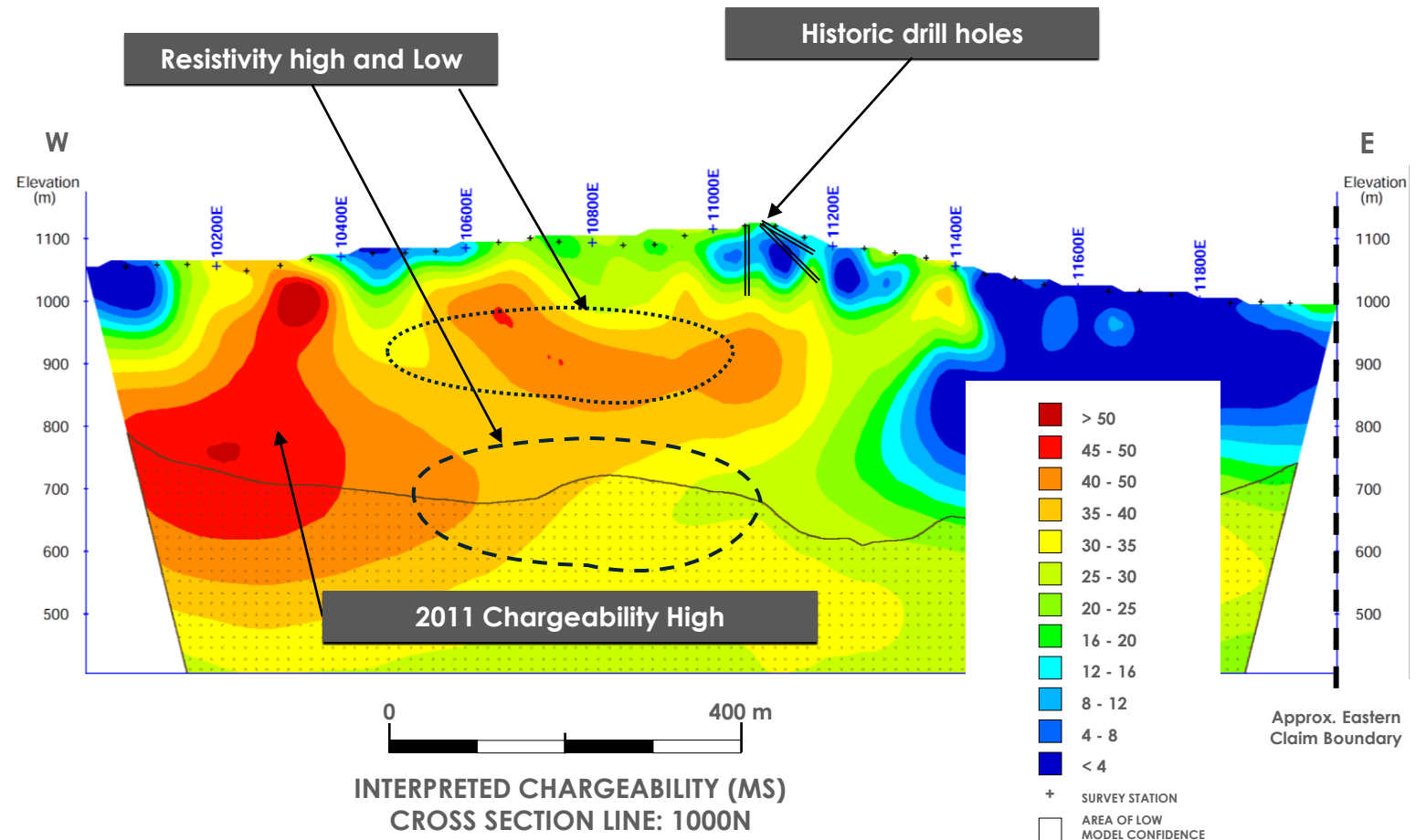


# Peak Central – Untested Geophysics

Testing for large scale Copper-Gold porphyry mineralization

Large geophysical features never drill tested

Surface mineralization interpreted to be higher level and peripheral to the main copper mineralization to the west



# Kendal Project

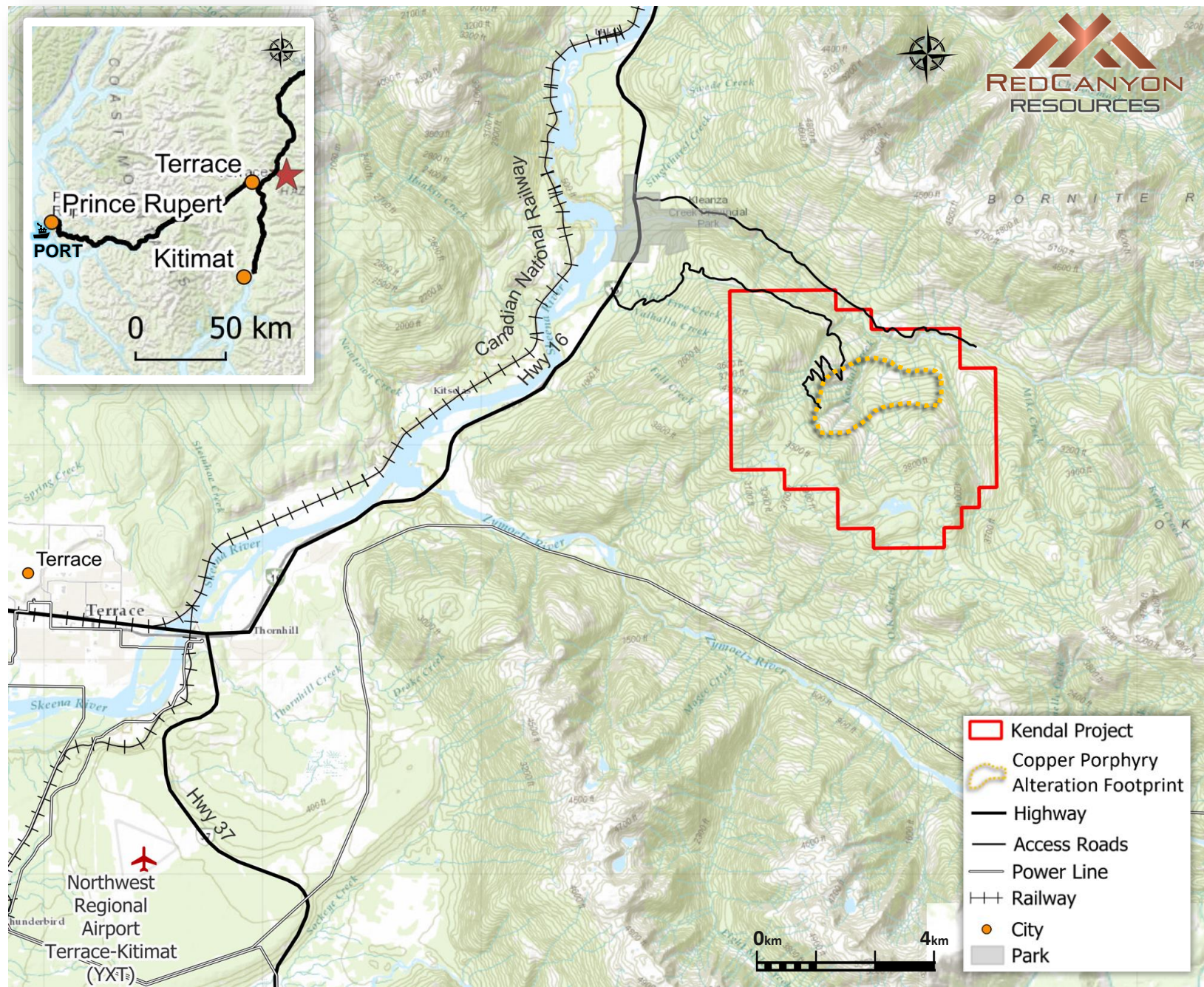
STRATEGIC CLAIM POSITION	
2,738 HECTARES	100% OWNED

Significant zone spanning 2.5km by 1.5km of altered and mineralized volcanic and porphyritic intrusive rocks

Previously unrecognized copper porphyry system

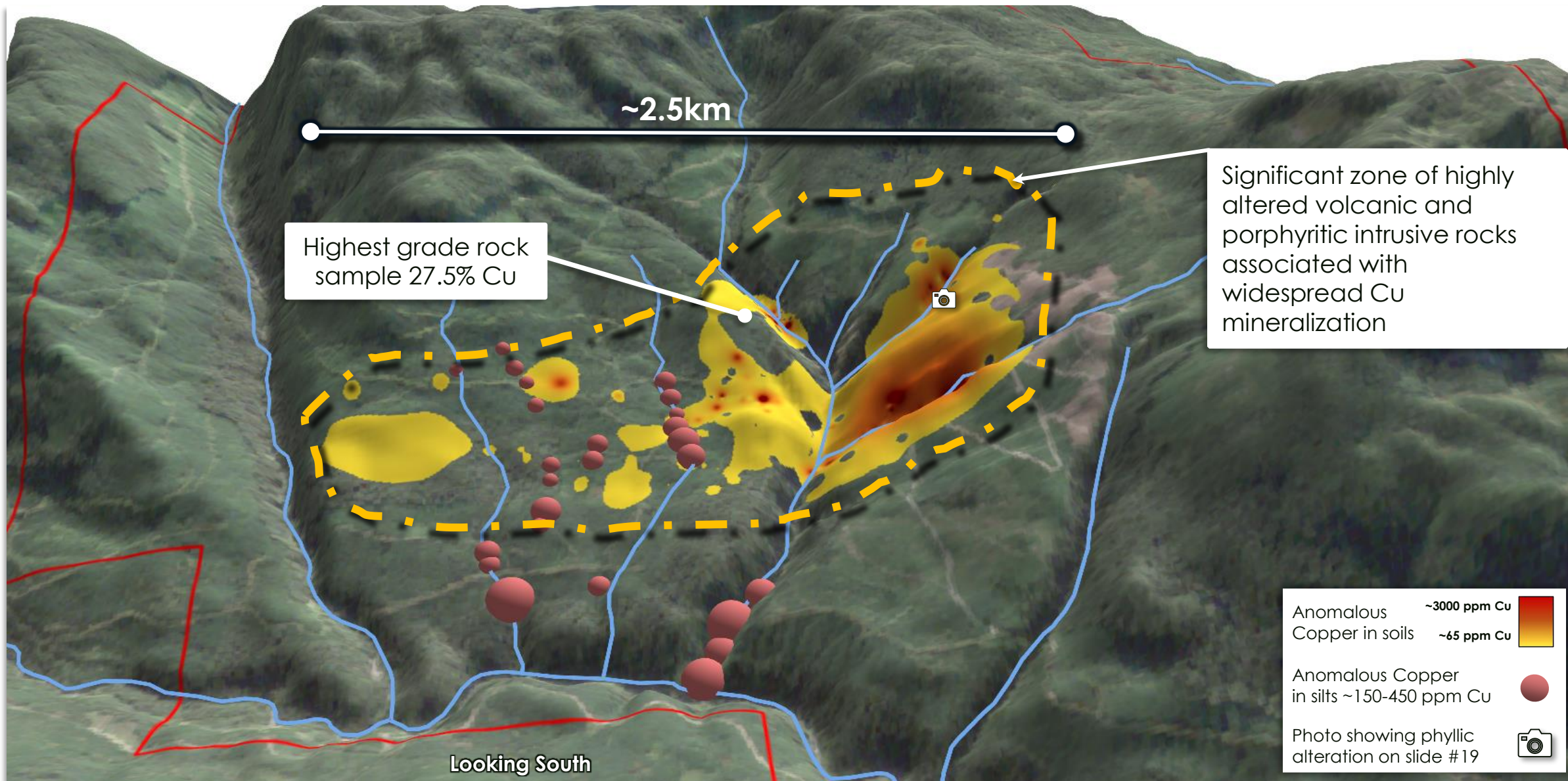
Excellent infrastructure, road accessible, 25 km NE of Terrace BC

Never drill tested





# Kendal Project





# Kendal Surface Alteration



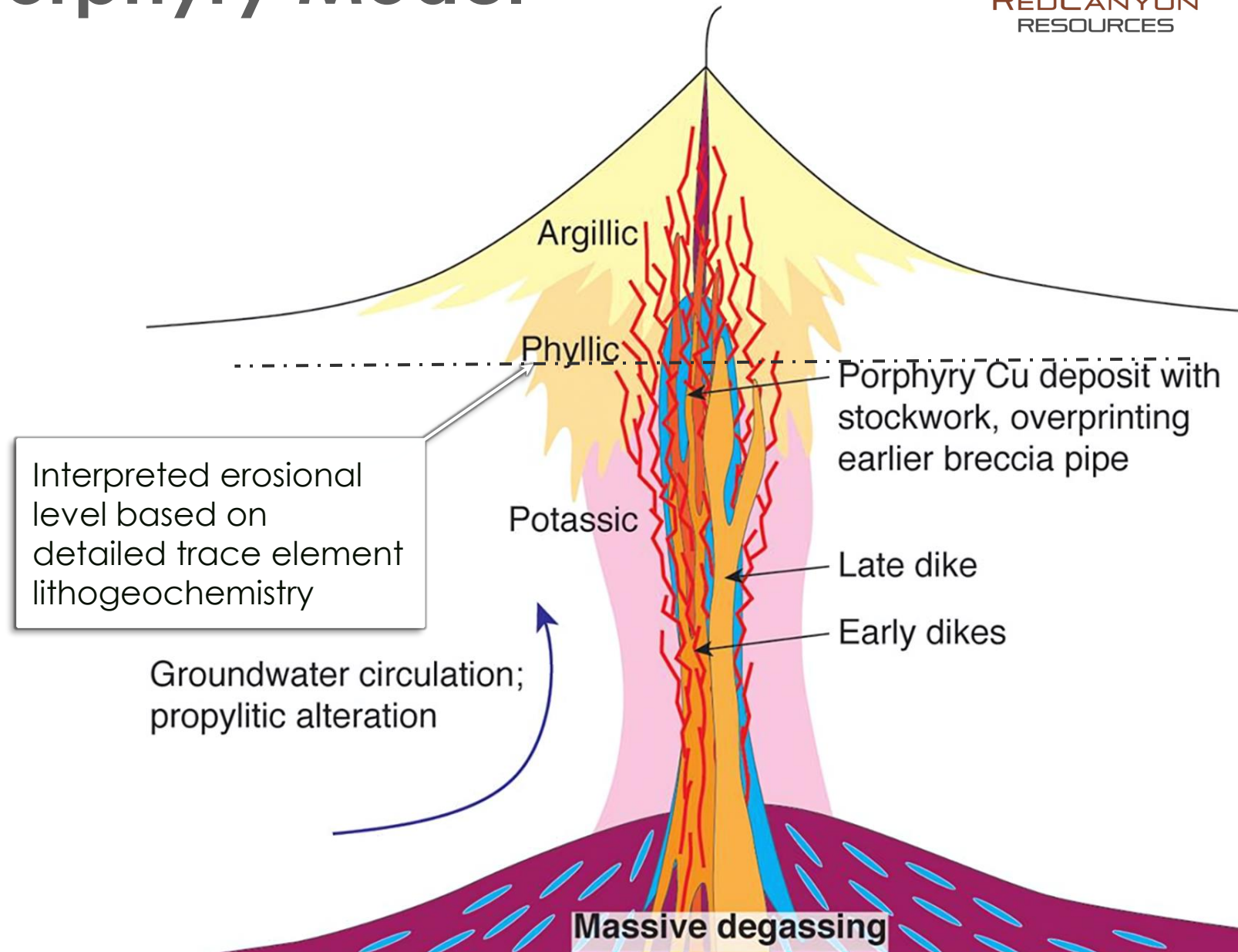


# Kendal Project - Porphyry Model

Target: Copper porphyry  
containing 1Mt – 3Mt Cu

Recent studies suggest the  
target potassic zone, typical host  
to copper mineralization remains  
intact at depth.

Kendal is drill ready – program  
start as early as fall 2024



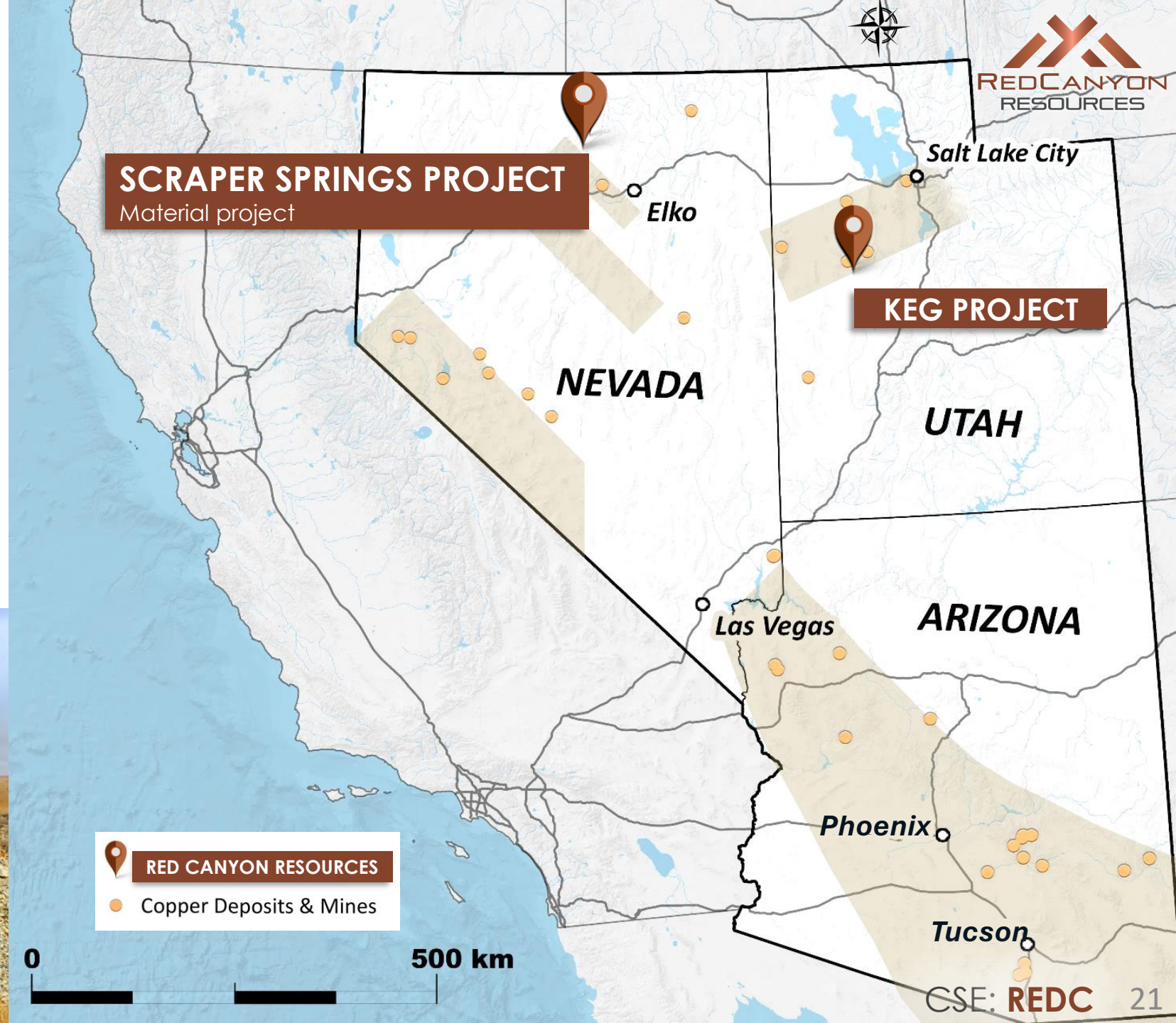


# Western U.S. Projects

Targeting under-explored mineral trends associated with world-class mines

Two projects, both 100% owned

Continuing to generate new projects in the western USA's most exciting Copper belts





# Scraper Springs Project

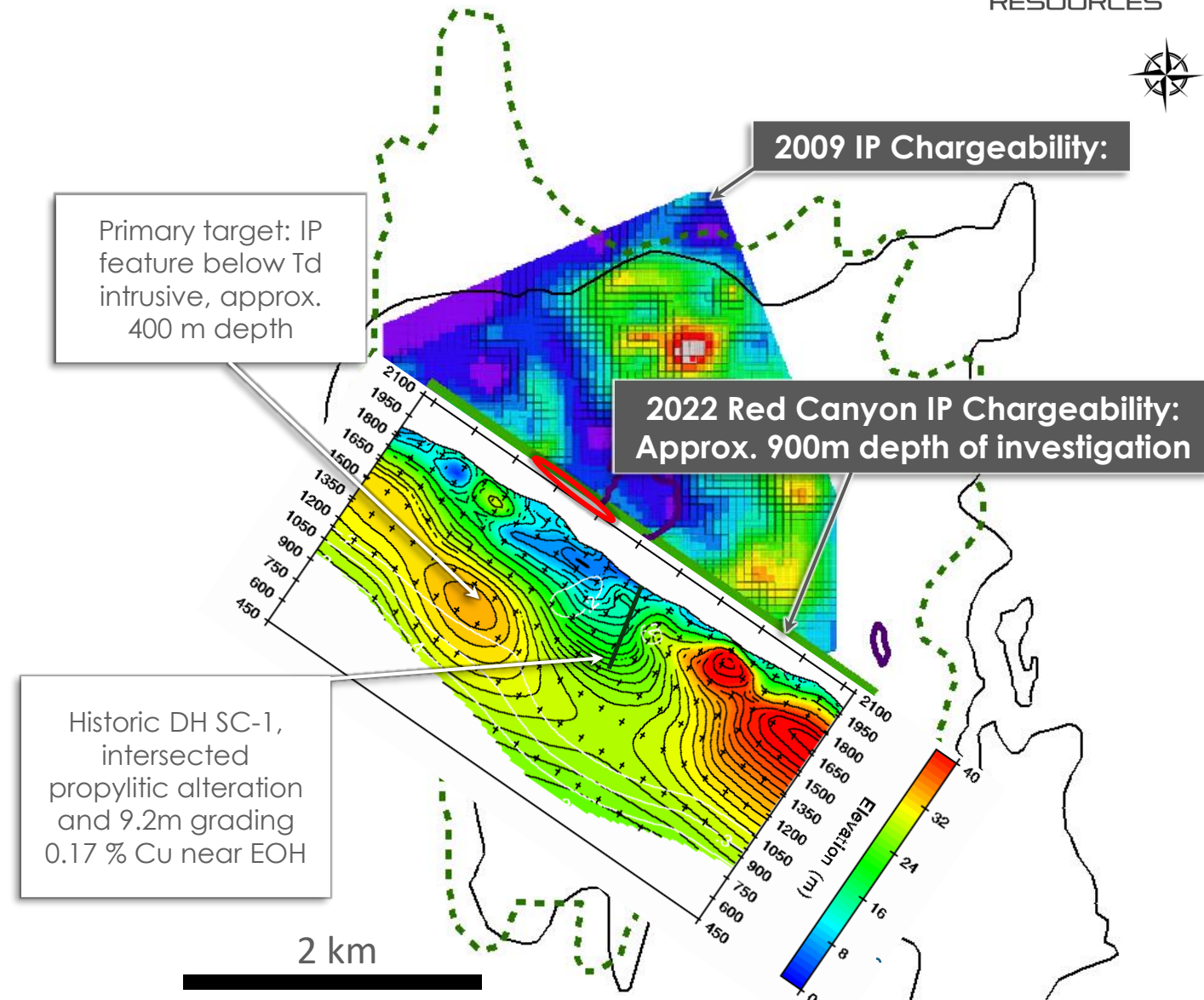


190 UNPATENTED CLAIMS	
1,589 HECTARES	100% OWNED

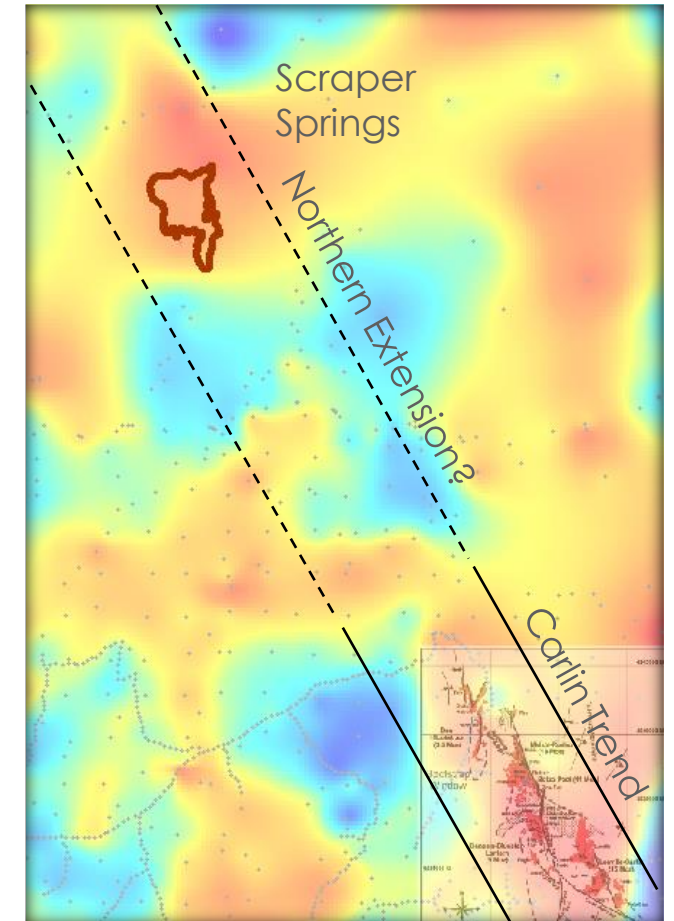
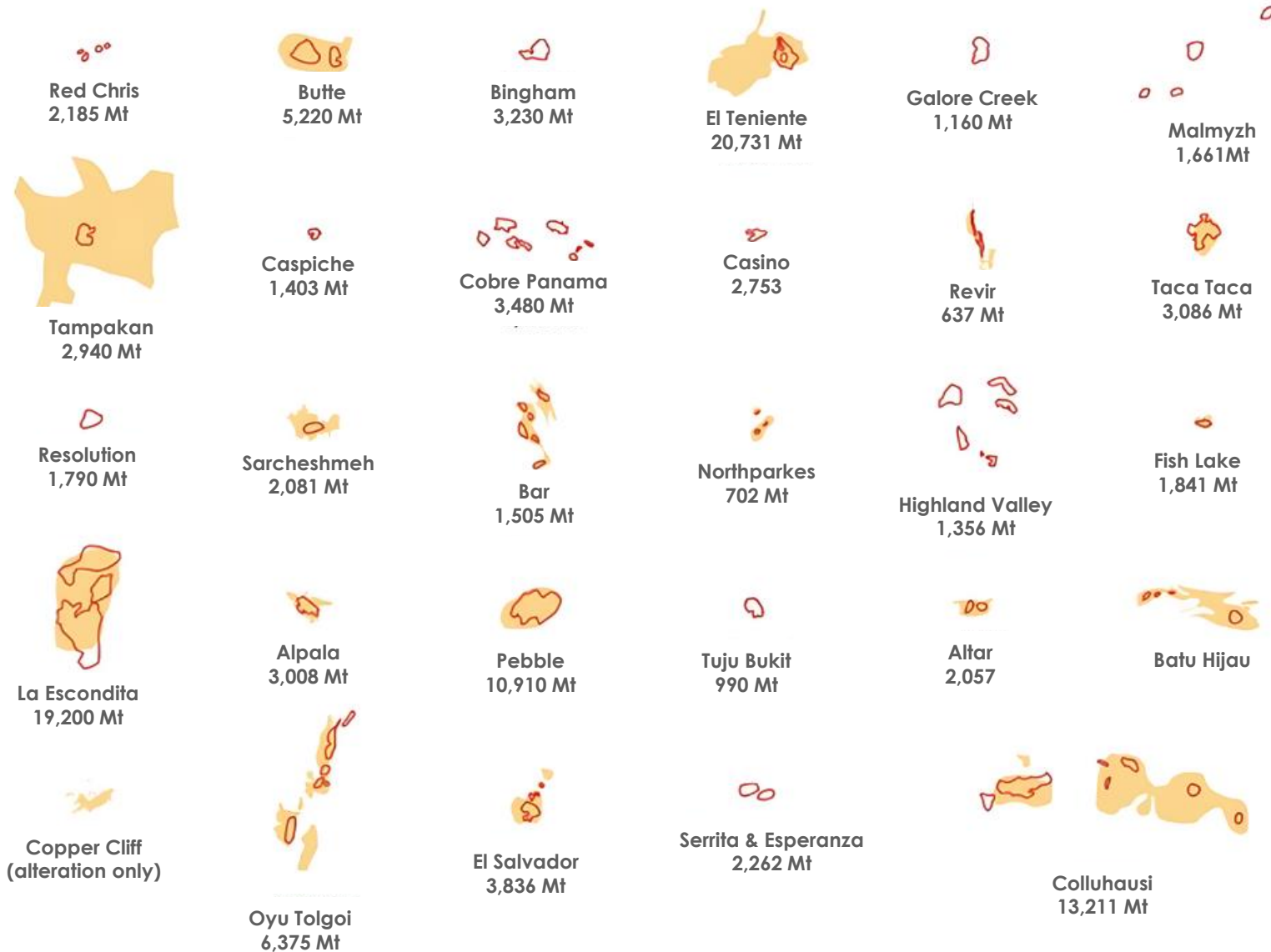
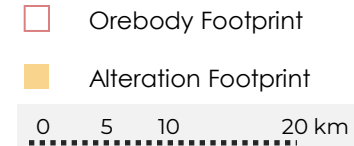
Testing for large scale copper-gold porphyry system

Huge alteration (~16 km<sup>2</sup>) footprint indicating large hydrothermal system centered on Bingham Canyon -age Eocene intrusions

Geological indications of potential buried porphyry system at depth



# Comparable Alteration Footprint





# Investment Thesis

## Market Cycle – Small Caps and Copper

Leading edge of new small cap cycle

- ✓ copper market deficit and need for new mines should drive premium in small cap copper companies

## Red Canyon Team

Technically driven team of geoscientists & capital market experts

- ✓ history of discovery and development success

## Exposure to Impactful Critical Metal Discovery Potential

Seven 100% owned Copper projects

- ✓ Four advanced and drill ready
- ✓ Highly leveraged to discovery
- ✓ Innovative geoscience deployed
- ✓ High margin potential projects only
- ✓ Hybrid model - drill test independently and JV projects
- ✓ High quality jurisdictions with excellent infrastructure

## Contact

Wendell Zerb

Chairman & CEO

Tel: +1-604-831-0924

wzerb@redcanyonresources.com

Brennan Zerb

Investor Relations Manager

Tel: +1-778-867-5016

brennan@redcanyonresources.com