

TSXV: CAM
OTCQB: CAMNF



EXPLORING FOR COPPER & GOLD

IN YUKON AND BC, CANADA

Energy Transition Metals Summit - April 2024

FORWARD-LOOKING STATEMENTS

This presentation contains forward-looking information. Forward looking information contained in this presentation includes, but is not limited to, statements with respect to the success of exploration activities.

These statements are based on information currently available to Cascadia Minerals Ltd. ("Cascadia") and Cascadia provides no assurance that actual results will meet management's expectations. In certain cases, forward-looking information may be identified by such terms as "anticipates", "believes", "could", "estimates", "expects", "may", "shall", "will", or "would". Forward-looking information contained in this presentation is based on certain factors and assumptions regarding, among other things, the estimation of mineral resources, the realization of resource estimate, gold metal prices, the timing and amount of future exploration and development expenditures, the estimation of initial and sustaining capital requirements, the estimation of labour and operating costs, the availability of necessary financing and materials to continue to explore Cascadia's projects, the progress of exploration and development activities, the receipt of necessary regulatory approvals, the completion of environmental assessment processes, and assumptions with respect to currency fluctuations, environmental risks, title disputes or claims, and other similar matters. While Cascadia considers these assumptions to be reasonable based on information currently available to it, they may prove to be incorrect.

Forward-looking information involves known and unknown risks, uncertainties and other factors which may cause the actual results, performance or achievements of Cascadia to be materially different from any future results, performance or achievements expressed or implied by the forward-looking information. Such factors include risks inherent in the exploration and development of mineral deposits, including risks relating to changes in project parameters as plans continue to be refined, risks relating to variations in mineral resources, grade or recovery rates resulting from current exploration and development activities, risks relating to changes in commodity prices and the worldwide demand for and supply of copper and gold, risks related to increased competition in the mining industry generally, risks related to current global financial conditions, uncertainties inherent in the estimation of mineral resources, access and supply risks, reliance on key personnel, operational risks inherent in the conduct of mining activities, including the risk of accidents, labour disputes, increases in capital and operating costs and the risk of delays or increased costs that might be encountered during the development process, regulatory risks, including risks relating to the acquisition of the necessary licenses and permits, financing, capitalization and liquidity risks, including the risk that the financing necessary to fund future exploration and development activities may not be available on satisfactory terms, or at all, risks related to disputes concerning property titles and interest, and environmental risks. This list is not exhaustive of the factors that may affect any of Cascadia's forward-looking information. These and other factors should be considered carefully and readers should not place undue reliance on Cascadia's forward-looking information. Cascadia does not undertake to update any forward-looking information that may be made from time to time by Cascadia or on its behalf, except in accordance with applicable securities laws.

QUALIFIED PERSON

Adam Coulter, M.Sc., P.Geo., Cascadia's Vice President of Exploration, is a qualified person for the purposes of National Instrument 43-101. All technical information contained in this presentation has been approved by Adam Coulter.

TRUE WIDTHS

PIL diamond drill hole intersections are historical and true widths are unknown. Catch diamond and RC drill hole intersections are drilled thicknesses and true widths are unknown.

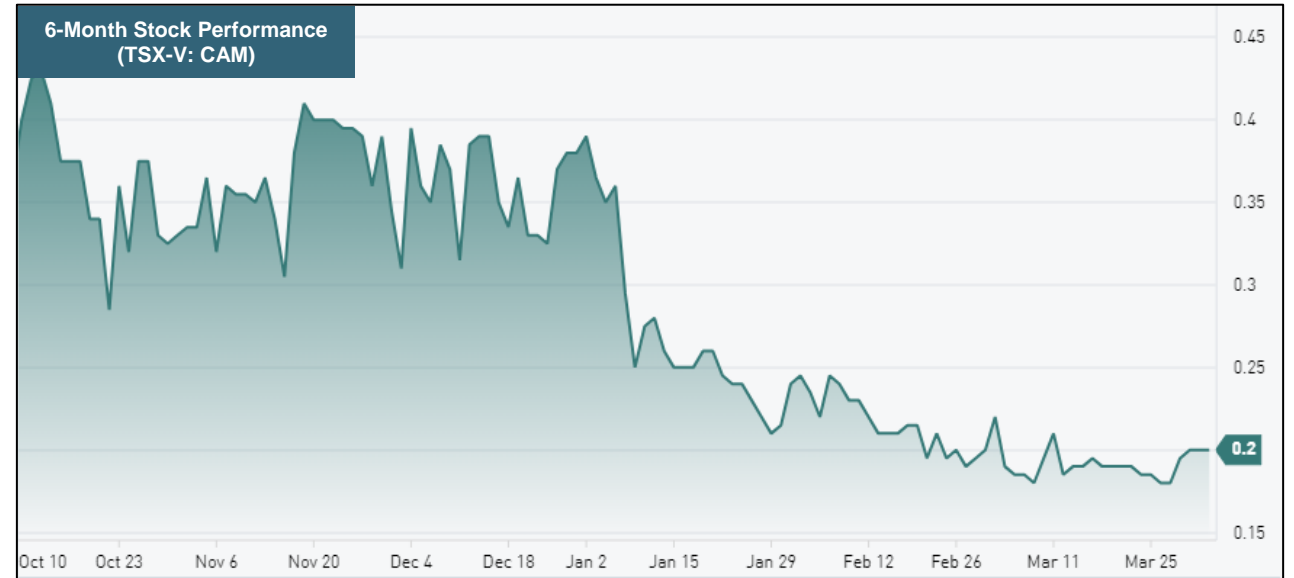
Share Structure (April 15, 2024)

Shares Outstanding	41,862,036
Warrants (\$0.25 - \$0.49)	15,621,055
Options (\$0.23)	1,250,000
Restricted Stock Units	275,000
Fully Diluted	59,008,091
Market Capitalization	~\$8 million
Working Capital	~\$1.5 million

Significant Holders (April 15, 2024)

Hecla Mining Company	17.4%
Barrick Gold Corporation	6.7%
Michael Gentile	6.0%
Management & Directors	4.1%

- 🏠 Focused on **copper & gold** exploration in Yukon and BC
- 🏠 New company, listed on the TSX-V on July 19, 2023
- 🏠 Experienced management team with **strong discovery track record** in Yukon
- 🏠 **Well-structured**, with significant strategic investors
- 🏠 **First-movers in the underexplored Stikine Terrane** extension of BC's Golden Triangle



Management Team

- ▶ **Graham Downs**, President & CEO, Director
- ▶ **Adam Coulter, M.Sc., P.Geo.**, VP Exploration
- ▶ **Andrew Carne, M.Eng., P.Eng.**, VP Corporate Development
- ▶ **Jasmine Lau, BCom., CPA**, Chief Financial Officer
- ▶ **Glenn Yeadon, B.Comm., LLB.**, Corporate Secretary
- ▶ **Christy Smith, B.NS., MBA**, Indigenous Engagement

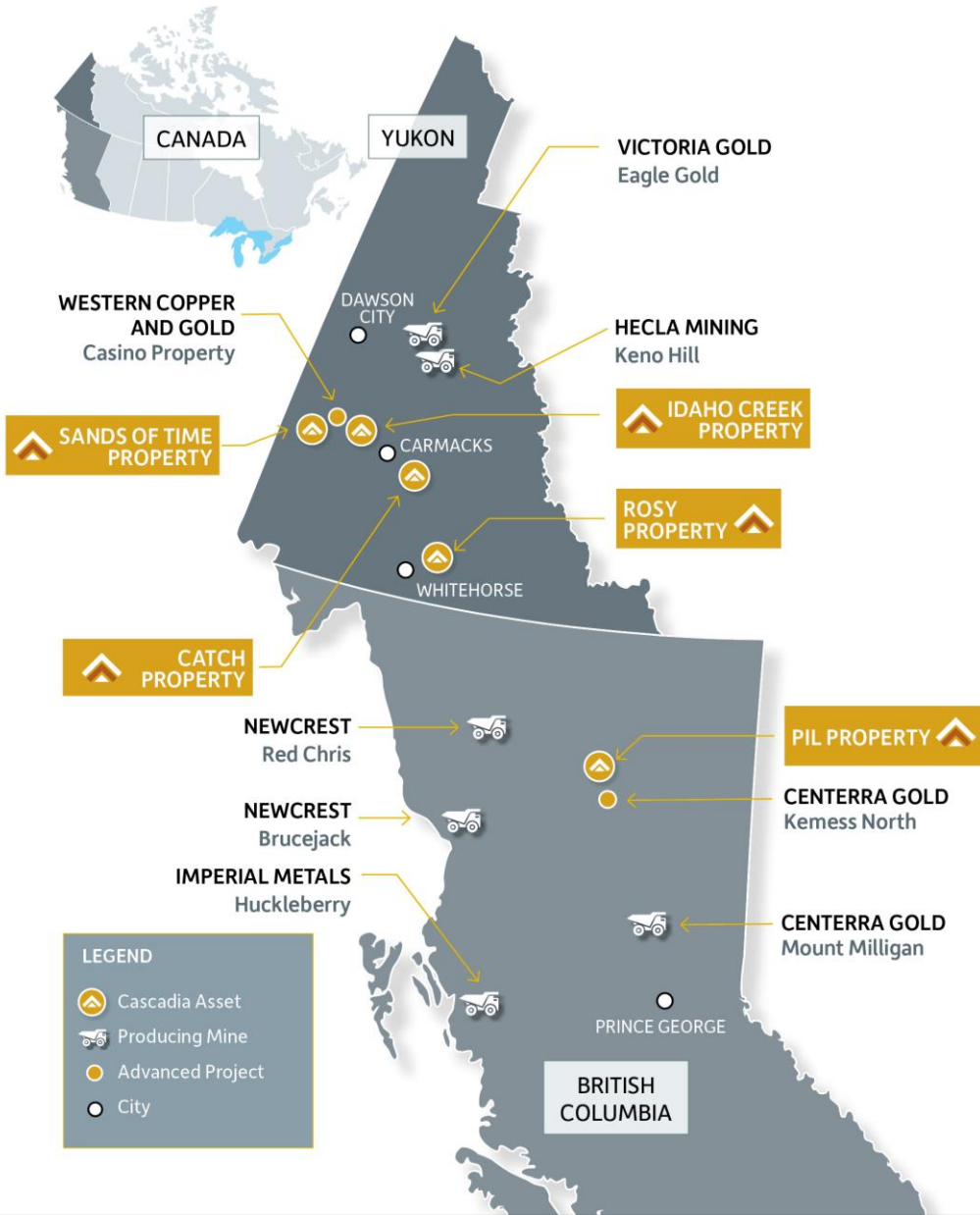
Board of Directors

- ▶ **Rob Carne**, Chair
- ▶ **Kurt Allen**, Director
- ▶ **Graham Downs**, Director
- ▶ **James Gray**, Director
- ▶ **James Sabala**, Director
- ▶ **Maureen Upton**, Director
- ▶ **Bruce Youngman**, Director

Technical Committee

- ▶ **Rob Carne**, Chair, former President of ATAC Resources
- ▶ **Kurt Allen**, VP Exploration for Hecla Mining Company
- ▶ **Ed Cope**, Former VP Exploration, North America, for Barrick Gold Corporation
- ▶ **Bill Wengzynowski**, Long-time Yukon prospector

Exploring for **COPPER & GOLD** in Yukon and BC



CATCH PROPERTY YUKON

Grassroots discovery with **high-grade Cu-Au in outcrop (3.88% Cu with 30.0 g/t Au)** across extensive areas.

Inaugural diamond drilling returned **116.60 m of 0.31% Cu with 0.30 g/t Au** from the 2nd drill hole on the property.

PIL PROPERTY BRITISH COLUMBIA

Multiple untested Cu-Au-Mo porphyry and epithermal Au-Ag targets. Located in the heart of the Toadoggone, one of BC's hottest exploration districts.

ROSY PROPERTY YUKON

Numerous low sulphidation epithermal quartz-carbonate veins with rock samples grading up to **12.55 g/t gold with 93.10 g/t silver**

SANDS OF TIME PROPERTY YUKON

Grassroots **Cu-Au-Mo porphyry targets** located adjacent to Western Copper and Gold's Casino Project, where Rio Tinto is a strategic investor

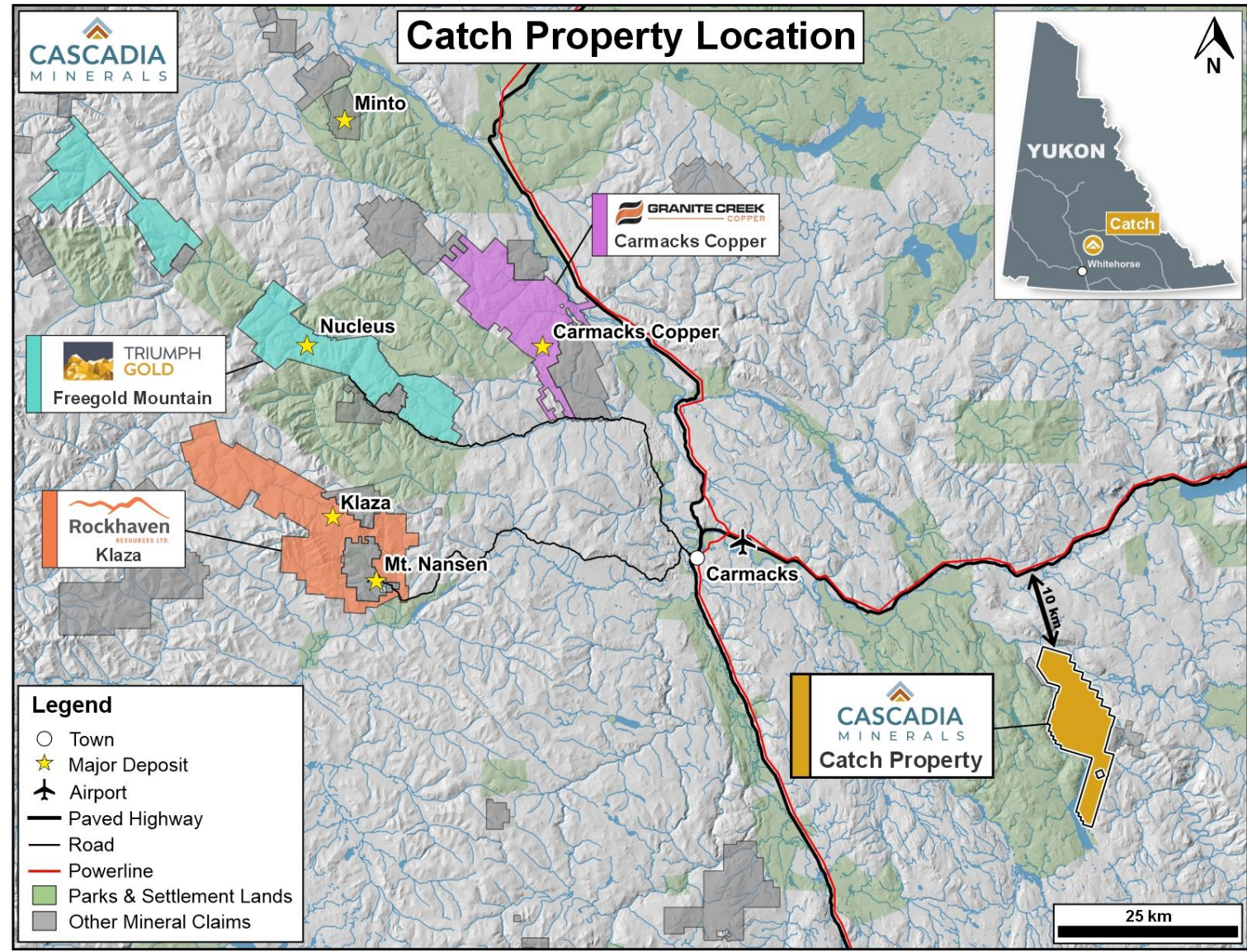
Catch Property, Yukon

- ▶ **New copper-gold discovery** in underexplored extension of the Stikine terrane (golden triangle) from BC
- ▶ Inaugural diamond drill campaign returned **116.60 m of 0.31% Cu with 0.30 g/t Au** in hole CA-23-002
- ▶ District-scale **117 km² property**
- ▶ Only 10 km from a paved highway and powerline

Hole CA-23-002 437.52 – 440.0 m: 0.95% Cu with 0.96 g/t Au

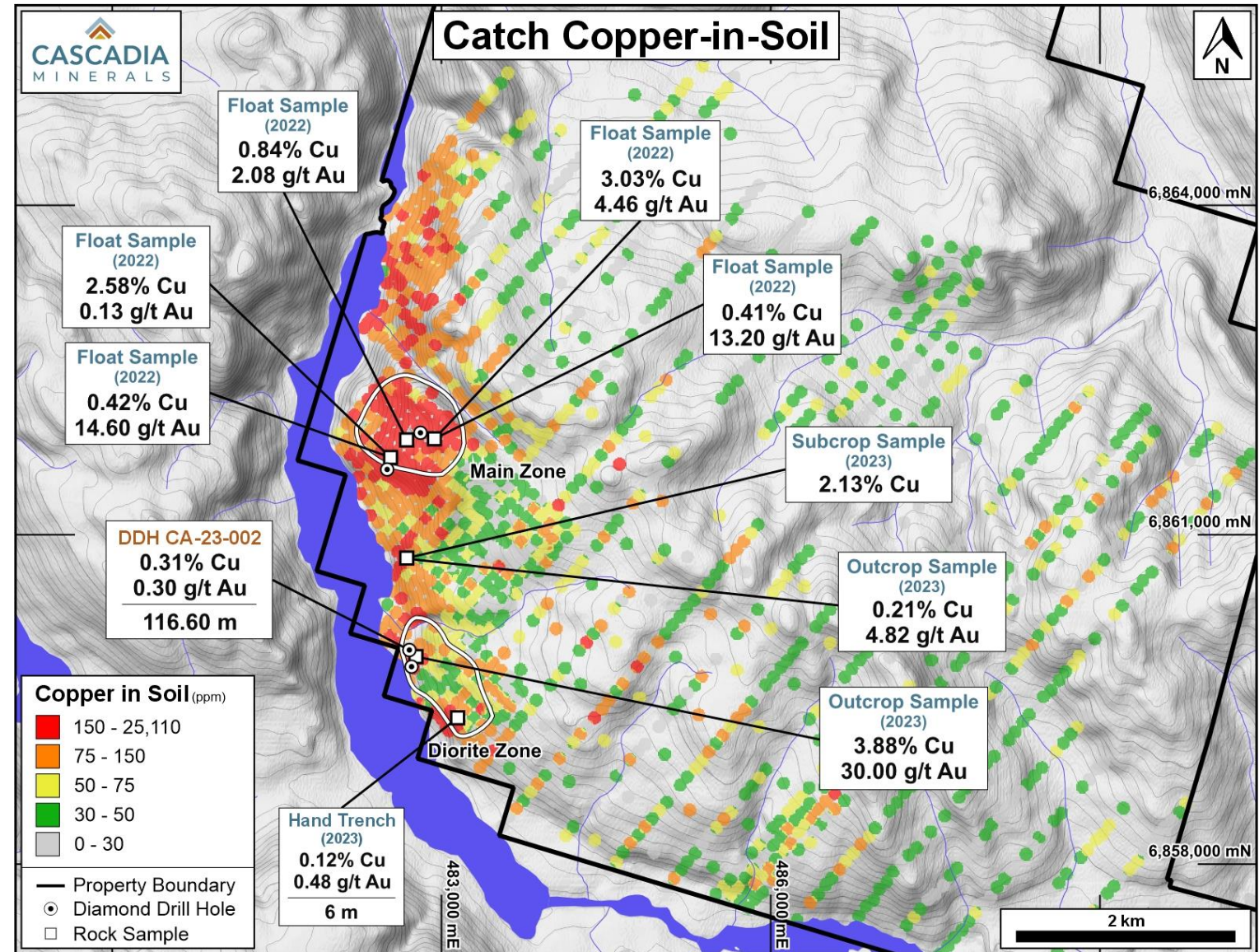


Catch Property – Location & Infrastructure



Catch Property – Copper-in-Soil

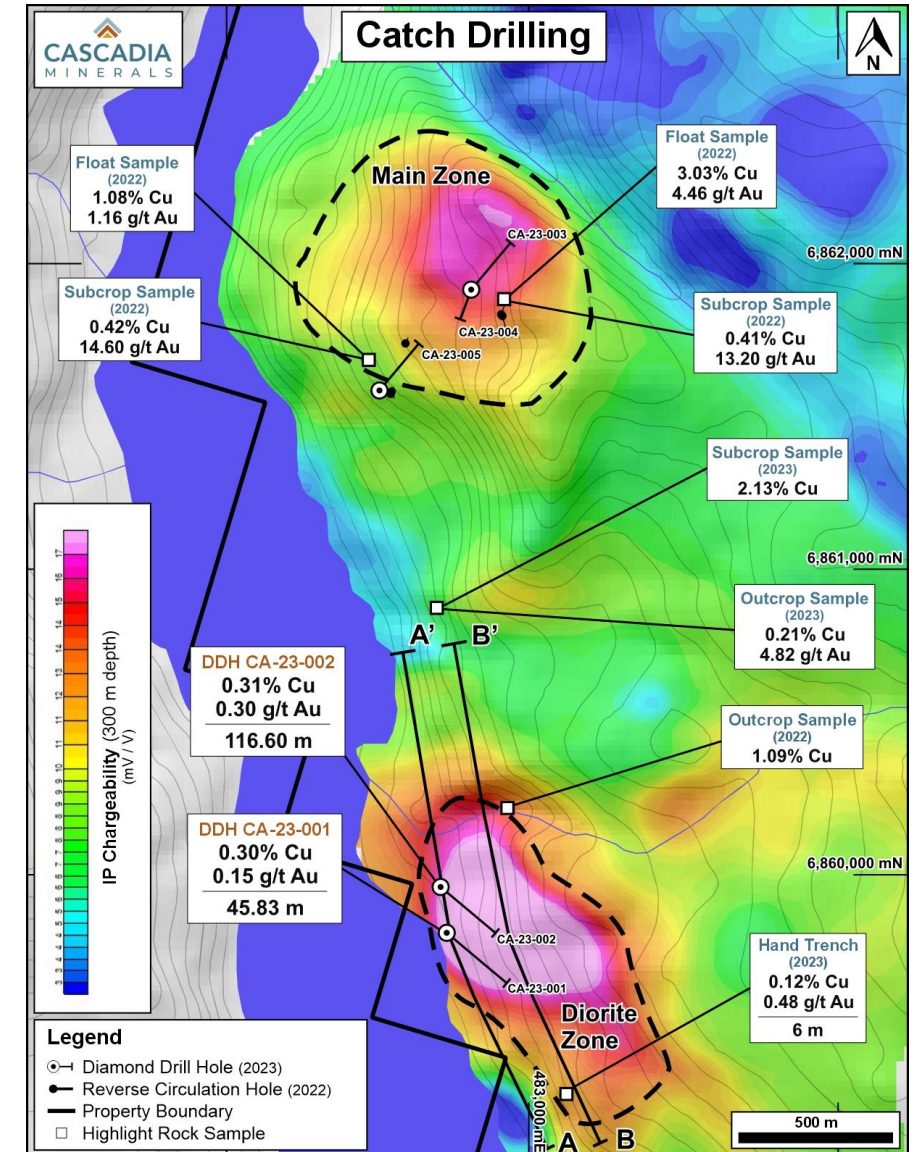
- High-grade copper and gold along a >5 km trend
- Rock samples have peak values of **3.88% copper** and **30.0 g/t gold**
- All zones remain open in all directions



Catch Property – Diamond Drilling

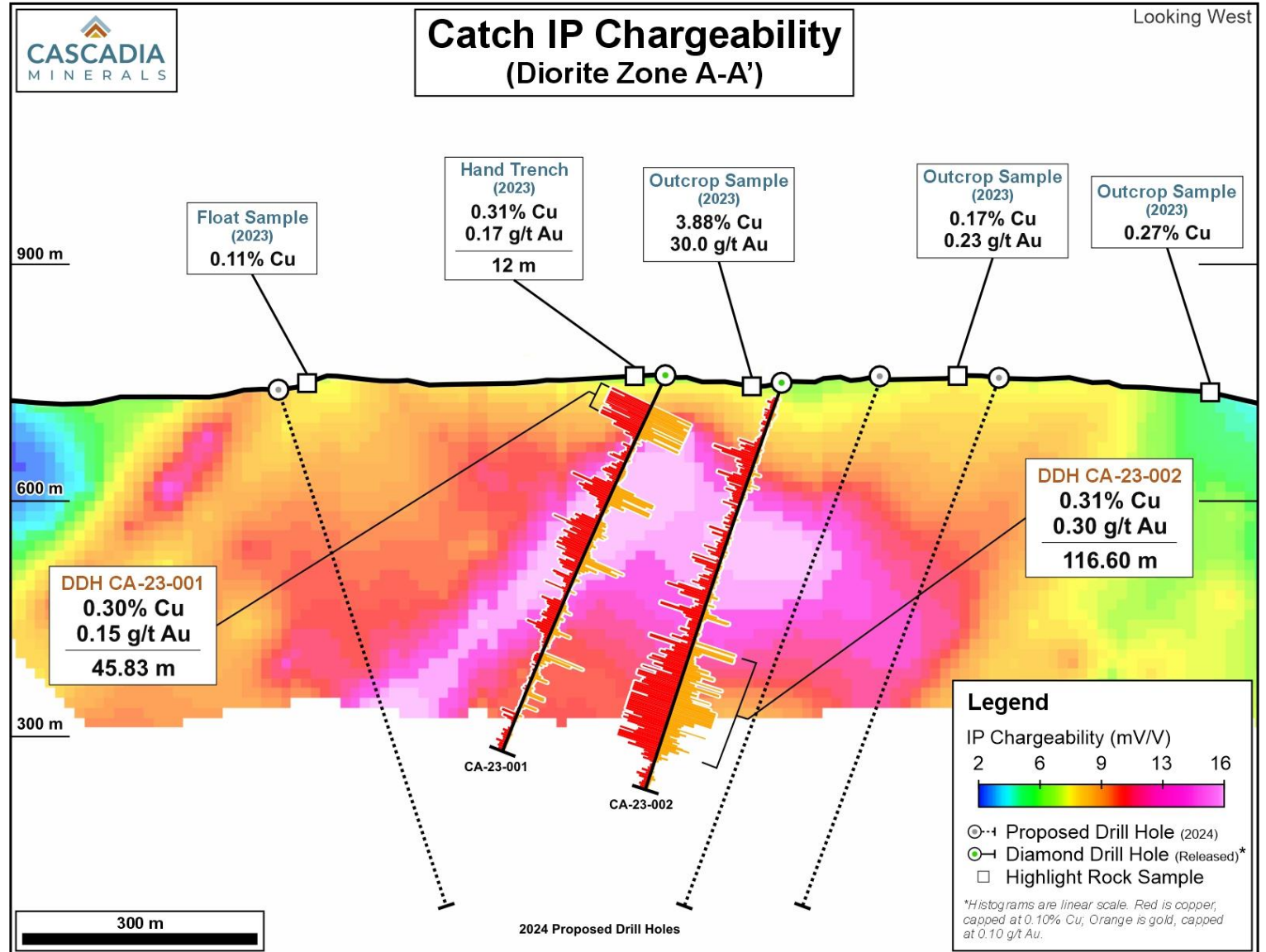
- ▲ Inaugural diamond drill holes completed in 2023
- ▲ Drilling targeted **strong geophysical anomalies** at both the Main and Diorite Zones, which remain **open in multiple directions**
- ▲ Hole CA-23-002 intersected **116.60 m of 0.31% Cu with 0.30 g/t Au** within 435.00 m of 0.16% Cu with 0.09 g/t Au
- ▲ Hole CA-23-001 intersected **45.83 m of 0.30% Cu with 0.15 g/t Au** within 333.87 m of 0.13% Cu
- ▲ Three holes at the Main Zone intersected **high-level alteration** and zones of **anomalous copper and gold**, believed to be leakage from an untested porphyry at depth

Drill Hole	From (m)	To (m)	Interval (m)*	Copper (%)	Gold (g/t)
CA-23-001	14.00	347.87	333.87	0.13	0.04
incl.	14.00	59.83	45.83	0.30	0.15
CA-23-002	80.00	515.00	435.00	0.16	0.09
incl.	356.00	472.60	116.60	0.31	0.30
and incl.	357.93	362.00	4.07	0.51	6.03
and incl.	407.00	472.60	65.60	0.40	0.13



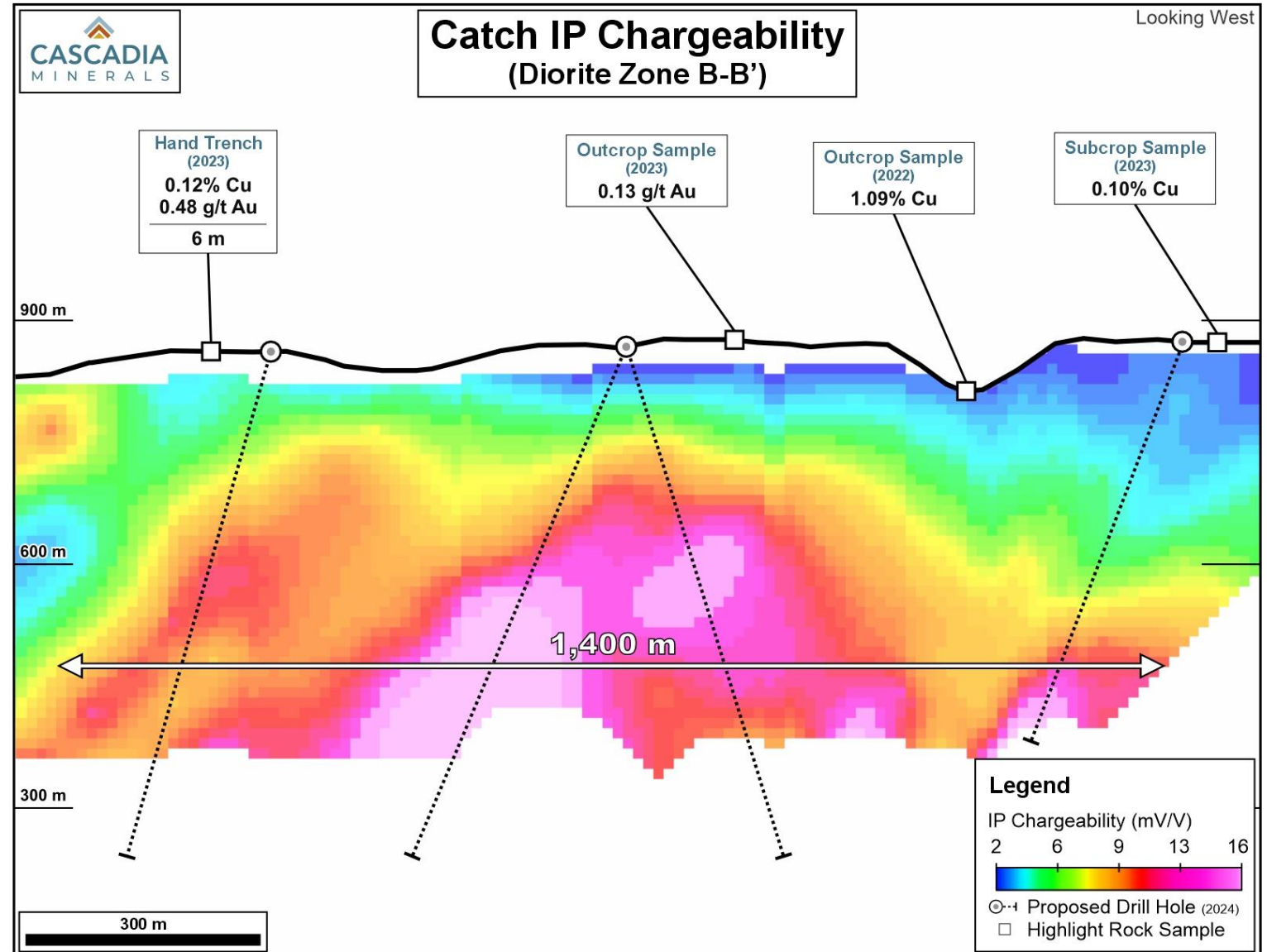
Catch Property – Diorite Zone Cross Section A-A'

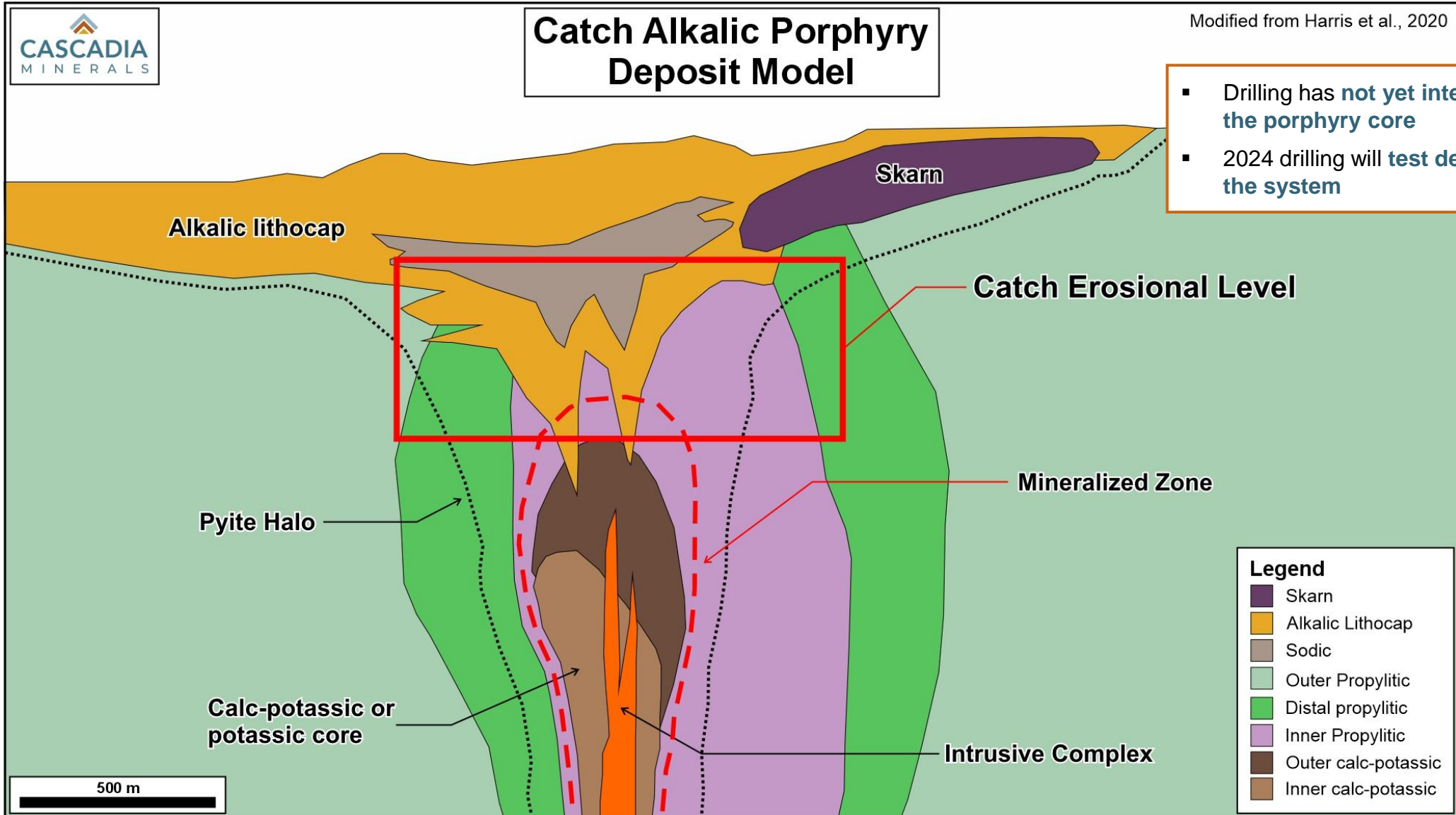
- Both diamond drill holes intersected significant copper and gold
- Sulphide assemblage is pyrite-dominant, **with grade upside expected in core of the system**
- IP high chargeability anomaly** open in multiple directions
- Holes **ended in visible sulphides with anomalous copper grades**



Catch Property – Diorite Zone Cross Section B-B'

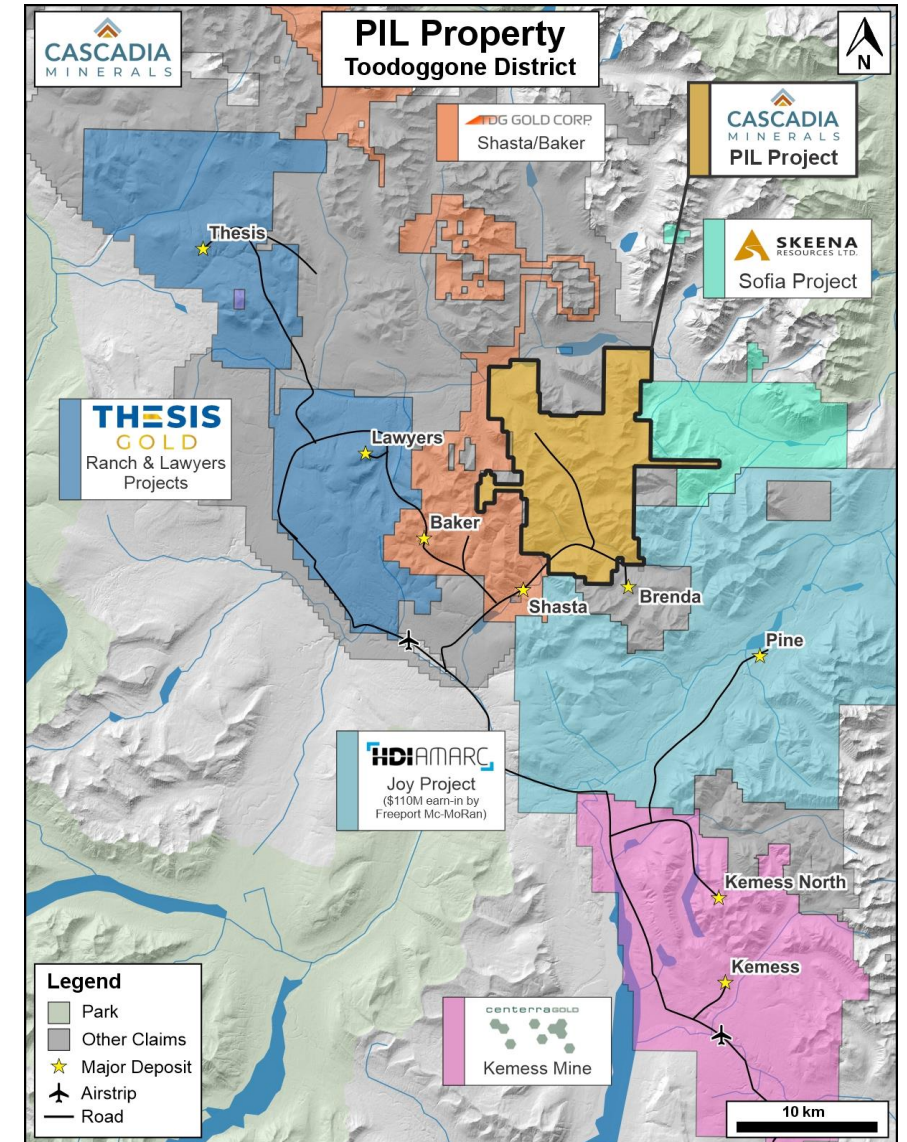
- Located **300 m east** of 2023 Diorite Zone drilling (Section A-A')
- Significantly stronger** IP Chargeability anomaly, over **1,400 m long**
- Outcrop samples** at surface including **1.09% copper**
- Priority step-out diamond drill target for 2024**

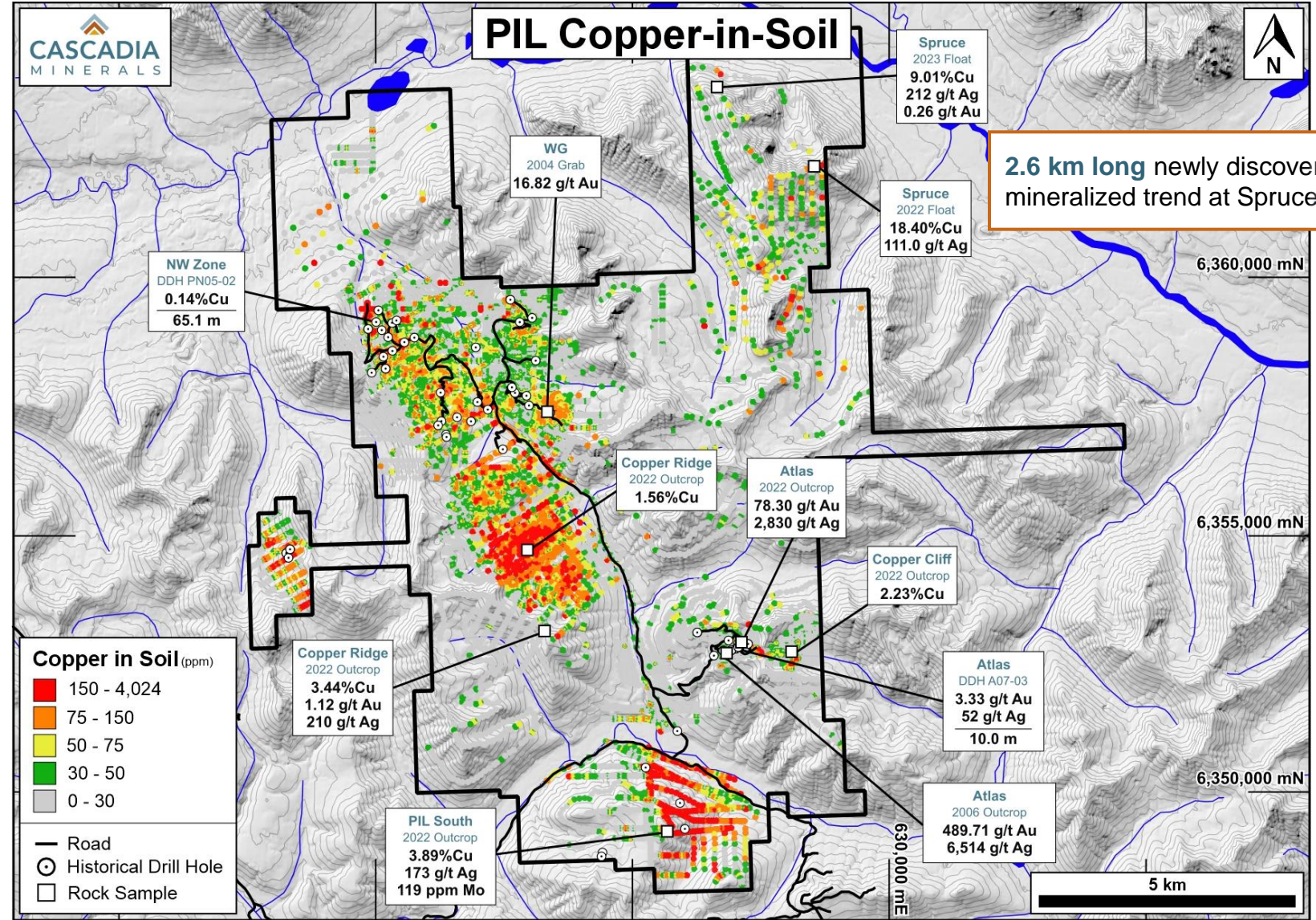


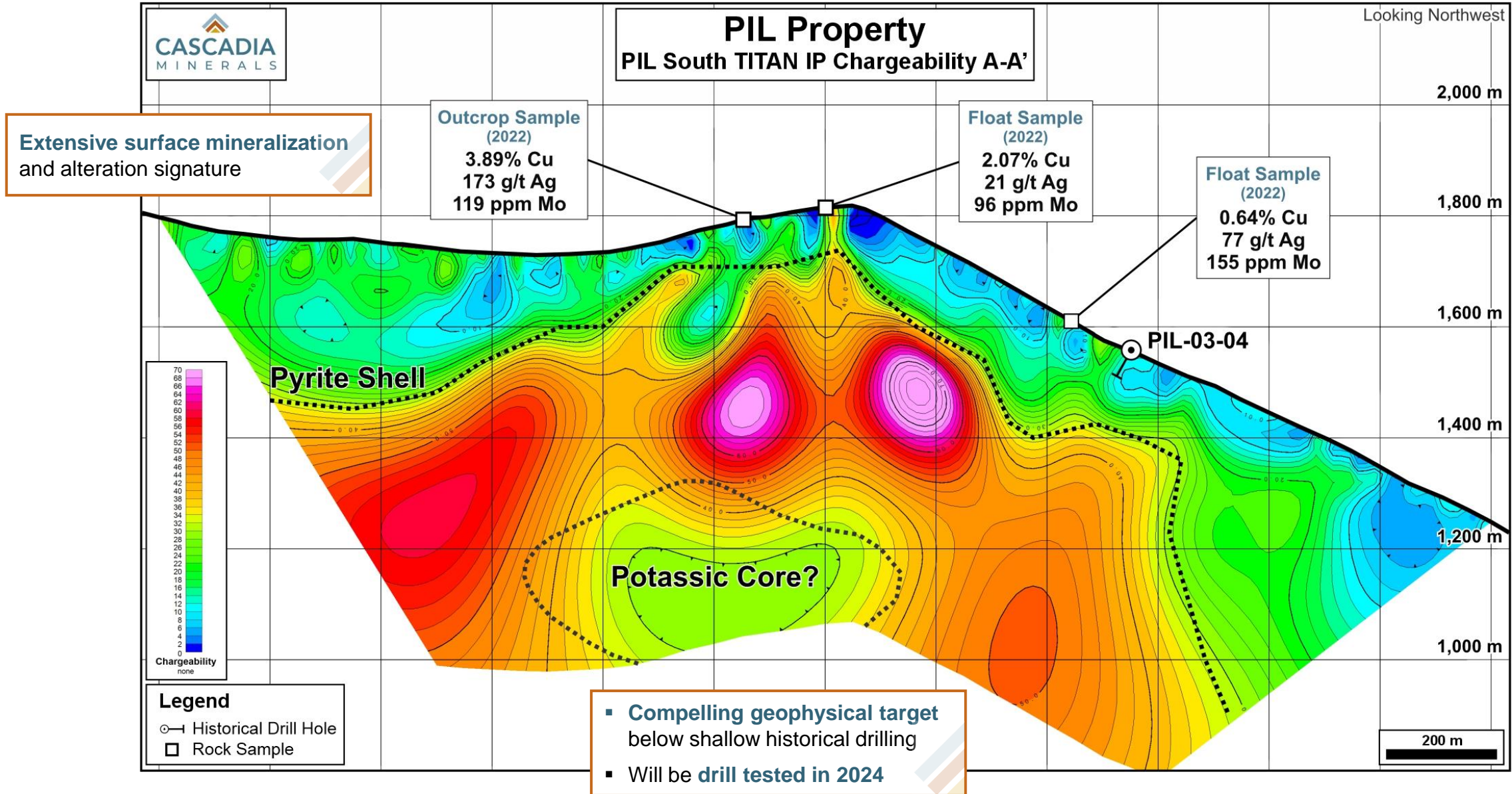


PIL Property, British Columbia

- Large, underexplored land package with numerous highly prospective copper-gold porphyry and epithermal gold-silver targets
- Located in a prolific and highly active part of BC's Golden Horseshoe, amongst multiple past producing mines and advanced exploration projects
- Spruce target returned **18.4% copper** with 111 g/t silver from a **newly discovered 2.6 km long trend of mineralization**
- PIL South returned **3.89% copper** with 173 g/t silver in a large **underexplored 2.3 km x 1.5 km copper-gold soil anomaly**
- 2023 TITAN IP Survey returned compelling geophysical signature at PIL South thought to be an **untested porphyry core beneath historical drilling**
- Atlas target returned **78.30 g/t gold with 2,830 g/t silver in outcrop**, 400 m from a 2006 sample that returned **489.71 g/t gold with 6,514 g/t silver** from a brecciated bedrock source
- Much of the property has not yet received systematic fieldwork
- Planning underway for drilling at PIL South in 2024**







Catch Property

- ▶ Planning underway for a **follow-up diamond drill program at Catch**
- ▶ Step out at Diorite Zone and test deeper holes
- ▶ Geological mapping at Main Zone to refine targeting for follow-up drilling
- ▶ Utilize alteration profiles to **vector towards the porphyry core**
- ▶ Drill overwintered on site on an undrilled Diorite Zone step-out pad, ready for early season start
- ▶ Target late **May** for commencement of follow-up drilling

PIL Property

- ▶ **Diamond drilling at the PIL South target** to test deep IP porphyry target below historical drilling
- ▶ IP geophysics at the Spruce area to refine targets for drill targeting

Other Projects

- ▶ Continue reconnaissance exploration on early-stage pipeline projects (Sands of Time, Idaho Creek, Rosy)



www.cascdiaminerals.com

Thank you

info@cascdiaminerals.com