

ASX

LU7

*After a 10 year hiatus, a new lithium company
emerges from the galaxy*

ASX

LU7



Iggy Tan, Chairman

Lithium Trail Blazer is Back

- Ran Greenbushes Li in 1995, commissioned Li Carb Plant
- First mining executive - lithium-ion battery future
- Built Mt Cattlin Spodumene Mine (137 ktpa)
- Built Jiangsu Lithium Carbonate Plant (17 ktpa)
- GXY Mkt Cap < \$10 m (left 2013) - rose to \$2.5 b at merger
- First large scale integrated mine to refinery project





GALAXY

GALAXY



Successful at Start-Ups

- 1 Mtpa mining
- 137,000 tpa concentrate
- DMS plant only
- On time, on budget
- Price US\$ 260/t, today ~US\$ 3,350/t ¹




**Mt Cattlin Spodumene
Operation**

- 17,000 tpa Li Carbonate
- Largest plant in the world at the time
- Start up issues but today at design rate
- Best quality Li Carbonate today
- Price US\$ 6,000/t, today spot of ~US\$31,425/t ²




TIANQI LITHIUM

**Jiangsu Lithium Carbonate
Plant**

Note:

1. Current Spodumene Concentrate(6%,CIF China) Price, USD/mt sourced from SMM at <https://www.metal.com/Lithium/201906260003> on 18th August 2023

2. Current Lithium Carbonate (99.5% Battery Grade) Price, USD/mt sourced from SMM at <https://www.metal.com/Lithium/20110225005> on 18th August 2023

Greenbushes Lithium Veteran

- Ran Greenbushes Mine for 25 years
- Spodumene concentrating experience
- Oversaw expansion from 200 Ktpa to 1.4 Mtpa
- Largest spodumene mine in the world
- Highest grade deposit



Patrick Scallan OAM
Non Executive Director

Why Canada?

- Australia produced >2.3 mt spodumene in 2022
- Australia pillar of China Li battery value chain
- Fertile ground for spodumene
- Not much production from Canada
- Many exploration companies now in Canada
- Australian expertise moving to Canada



“Canada wants to be the “Australia to North America”

Joe Lowry, Mr Lithium

“Lithium projects are taking too long to be built and there is not enough coming on line to meet future demand”

Iggy Tan
Non Executive Chairman

“There are many lithium explorers, but not many have the experience to build lithium projects”

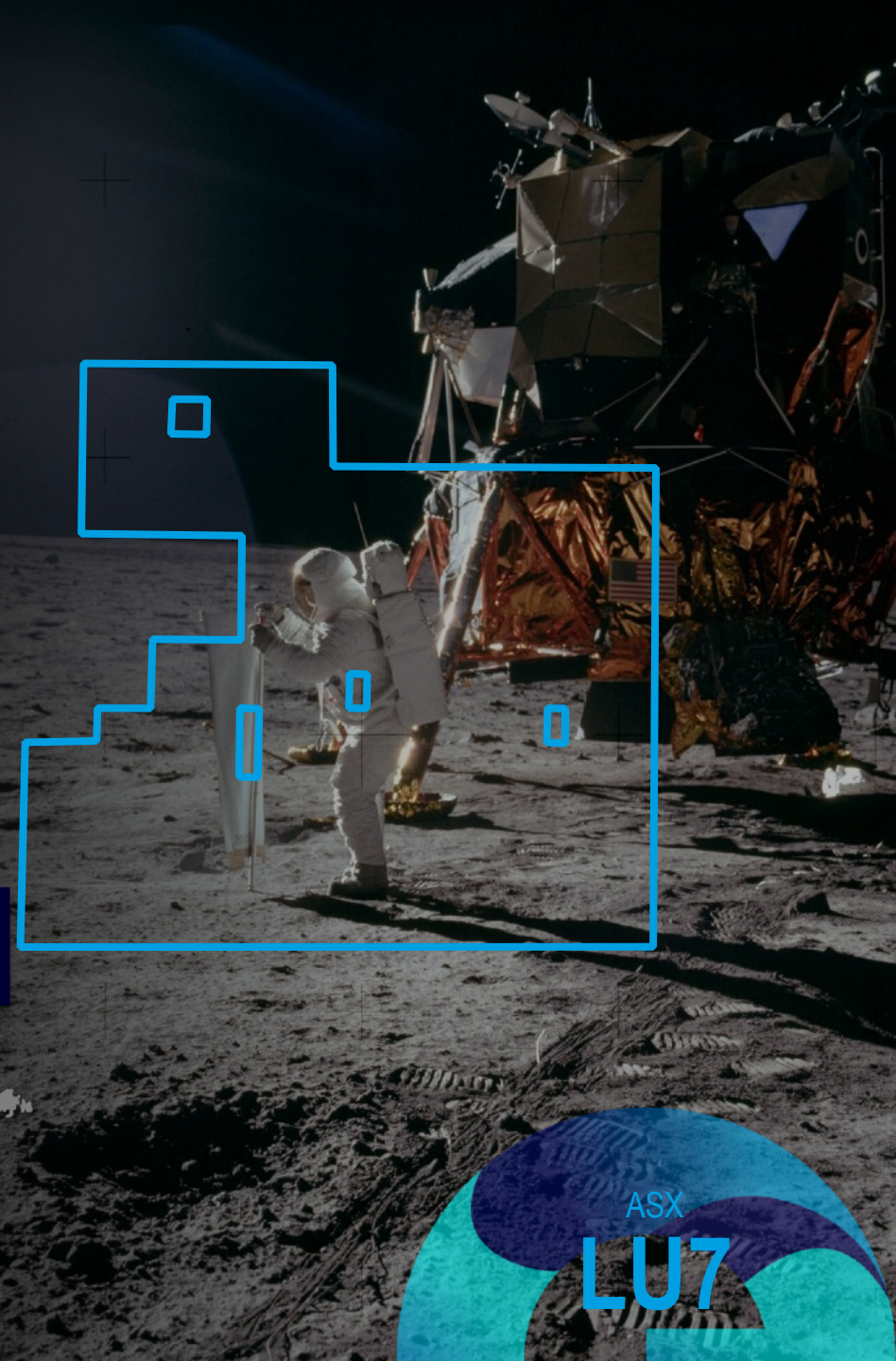
**“We are not here to explore for
exploration's sake”**

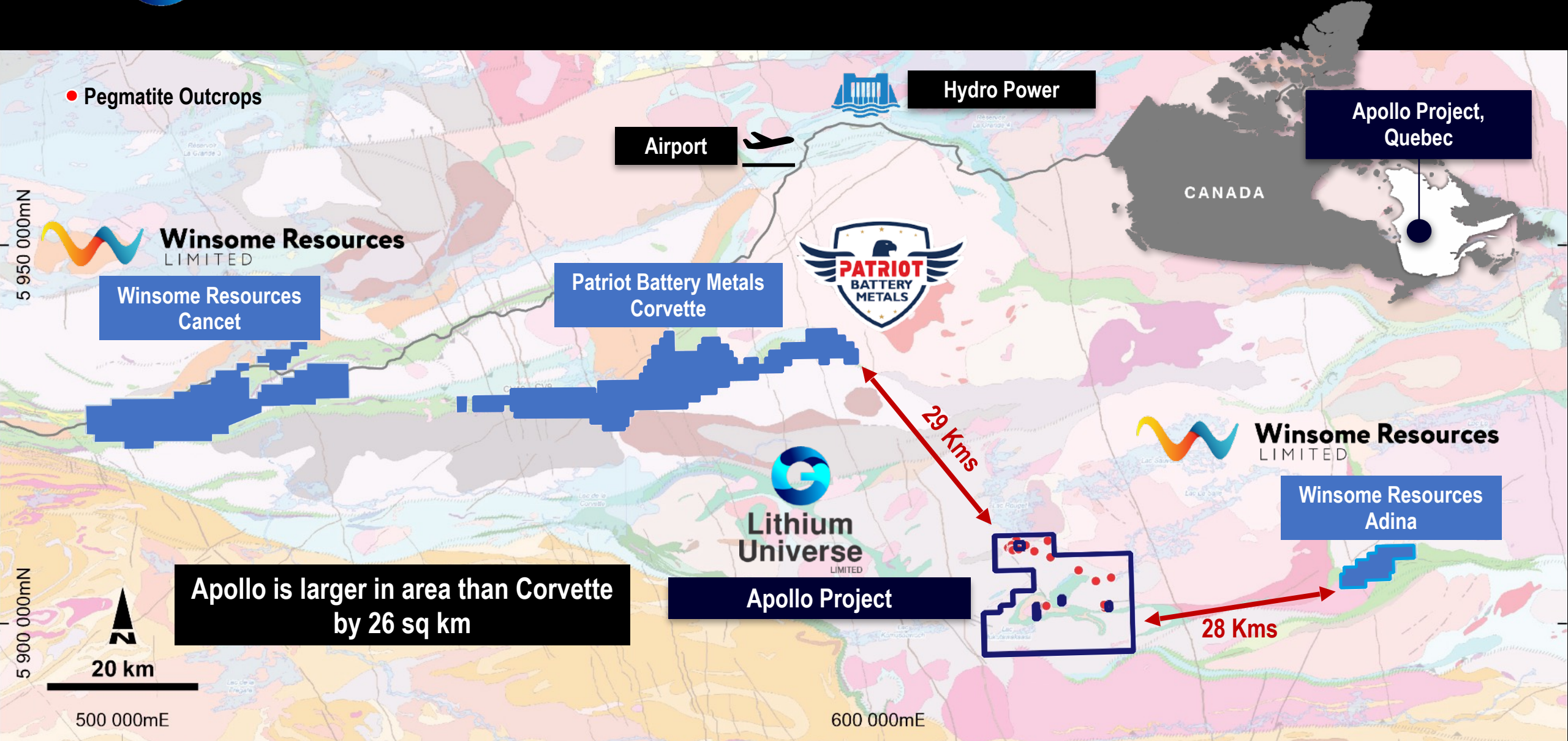
**“We are here to build a Lithium project in
Canada as quick as we can”**



Apollo Vehicle to the Universe

- Situated in James Bay, Quebec
- Apollo (80%) Acquired in June 2023
- Large footprint of 466 claims & 240 km²
- When staked Lithium cycle was at its low point
- Between two unknown exploration companies
- NASA passion for discovery





● Pegmatite Outcrops

Hydro Power

Apollo Project,
Quebec

Airport

CANADA

Winsome Resources
LIMITED

Winsome Resources
Cancet

Patriot Battery Metals
Corvette



Winsome Resources
LIMITED

Winsome Resources
Adina

Lithium Universe
LIMITED

Apollo Project

Apollo is larger in area than Corvette
by 26 sq km

29 Kms

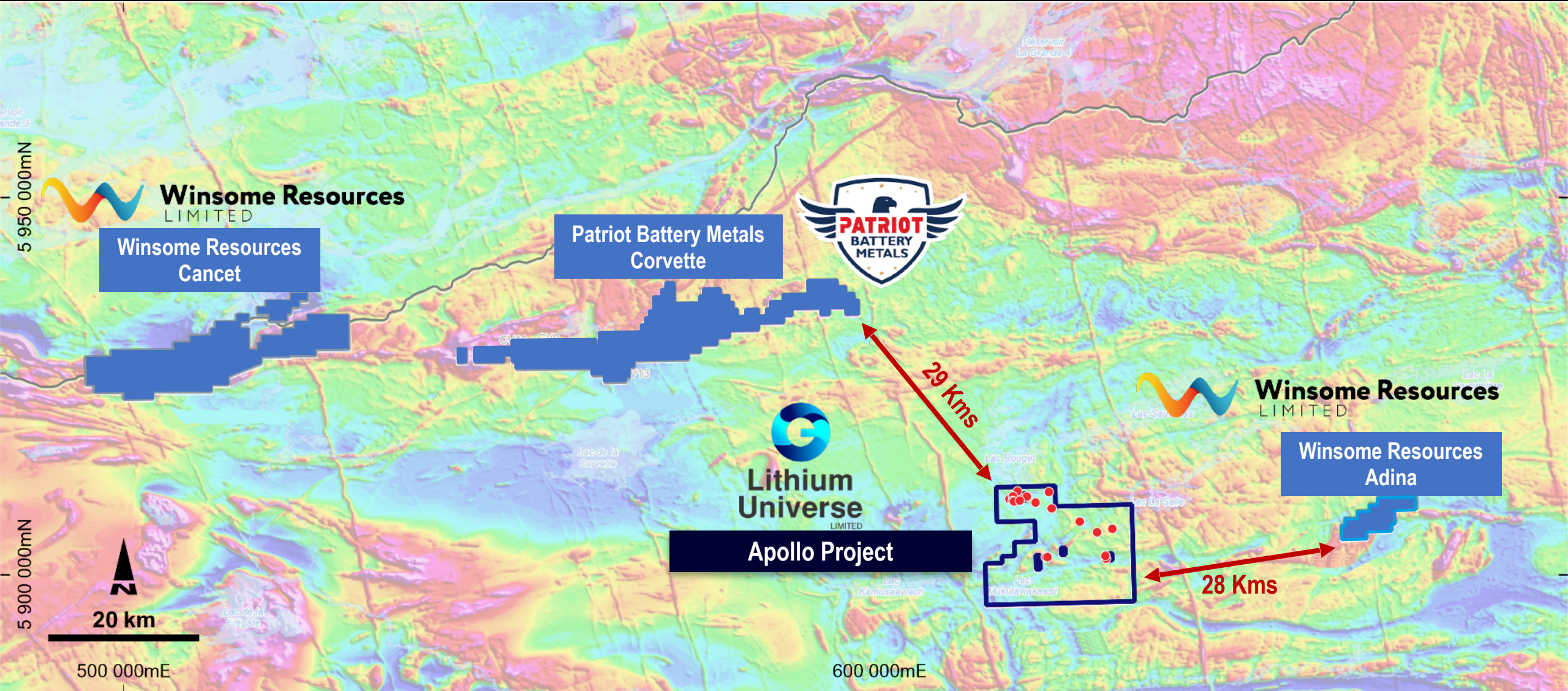
28 Kms

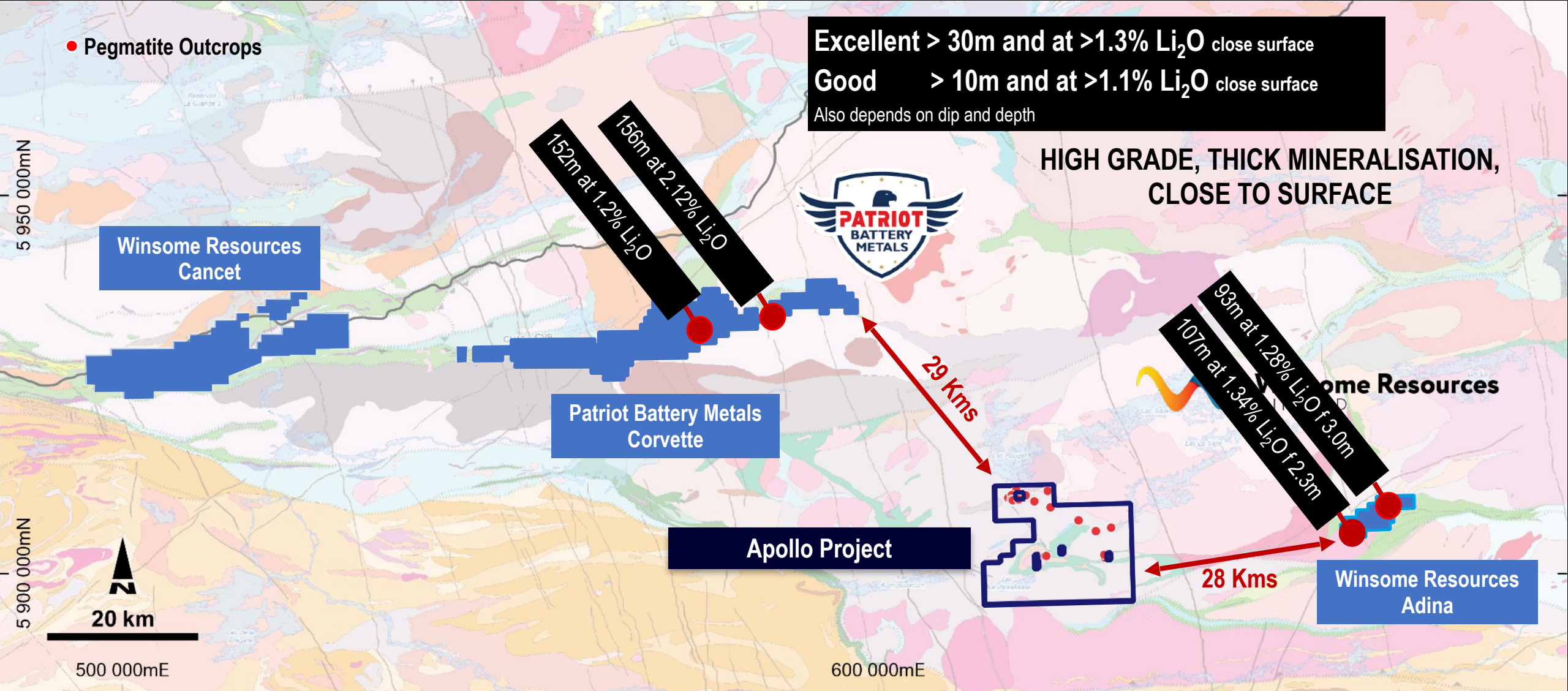
20 km

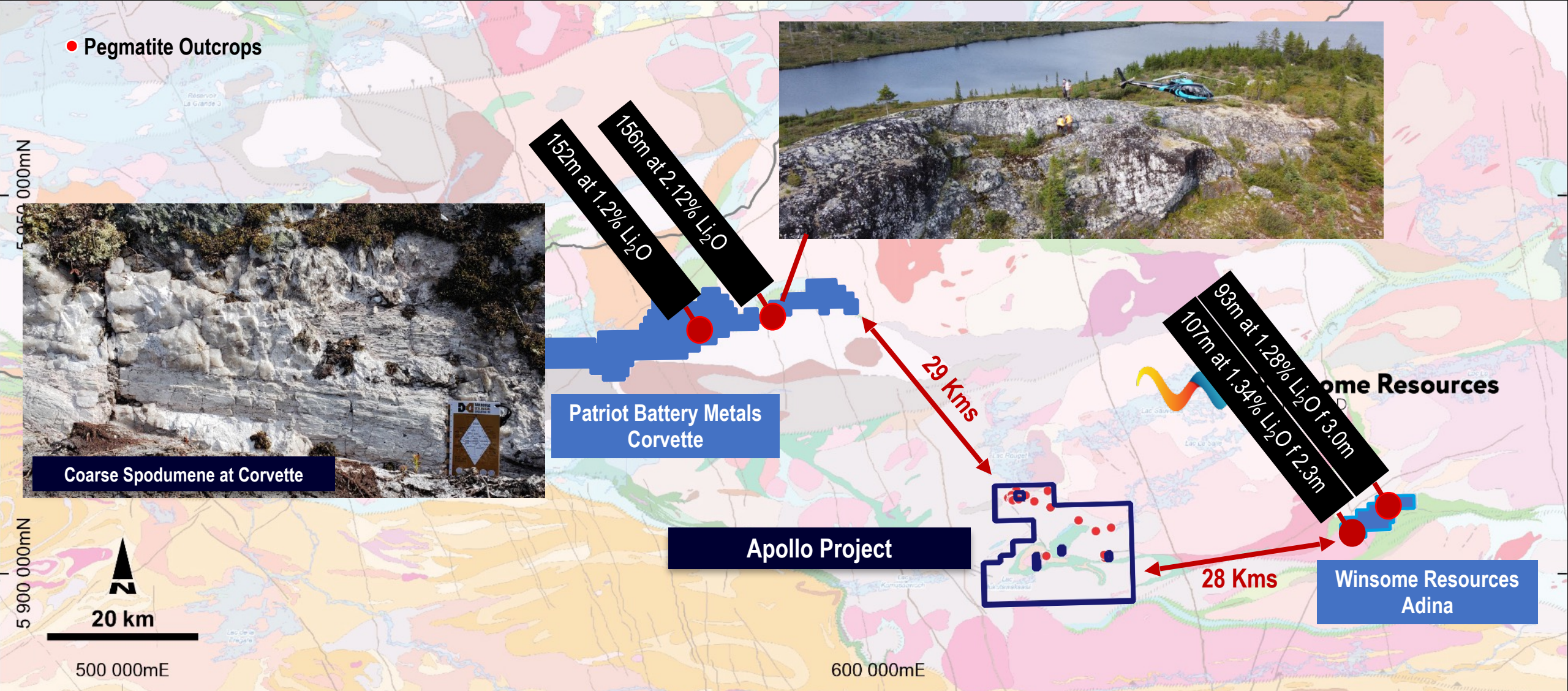
500 000mE

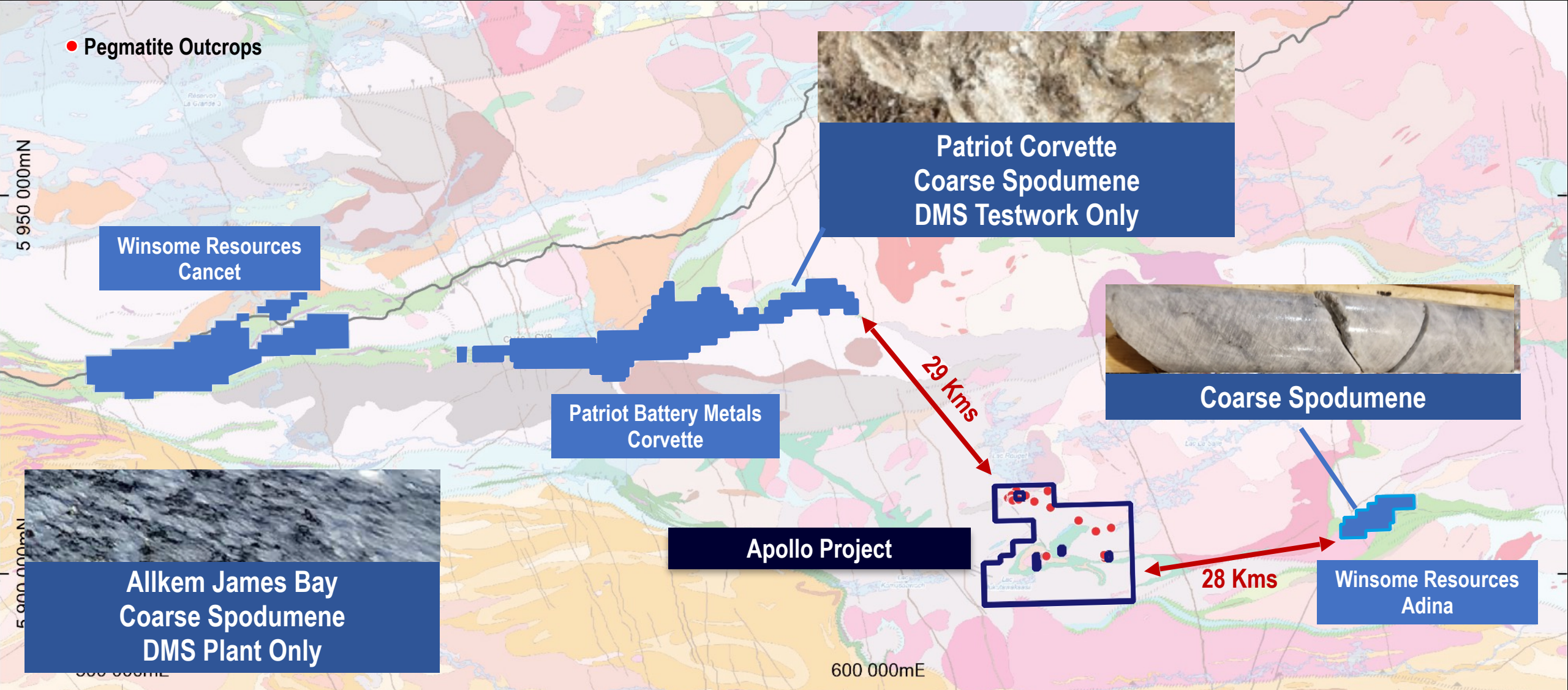
600 000mE

Qualified Person Report – Dr Julie Selway (leading LCT Pegmatite Expert)

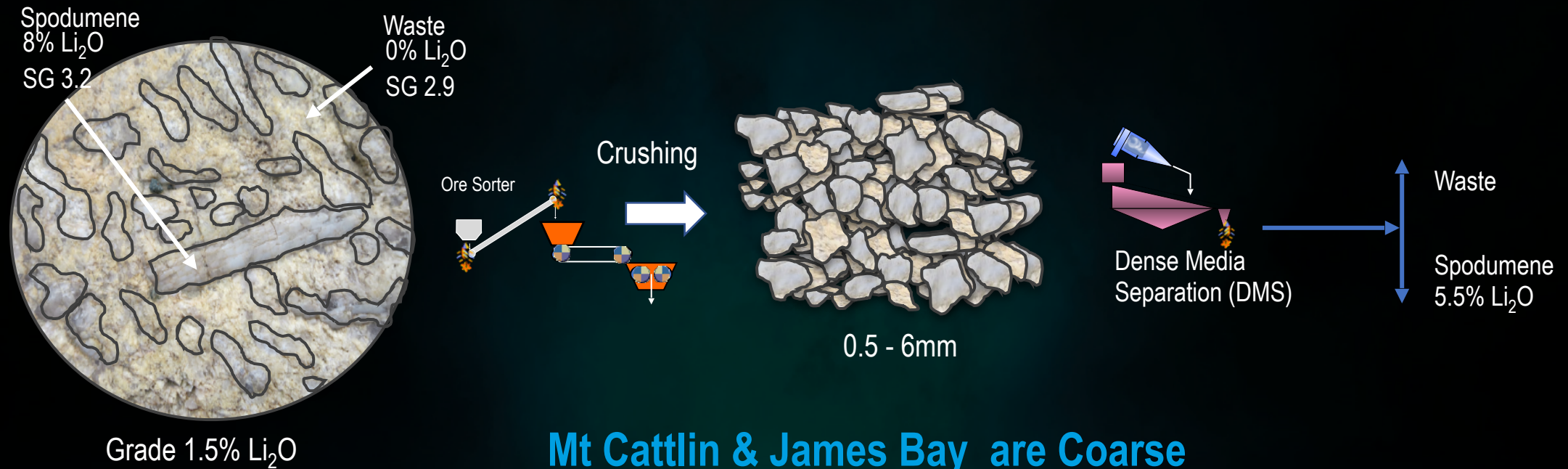








Benefits of Coarse Spodumene



Example of Spodumene crystal – For demonstration and not to represent any results at Apollo deposit

Mt Cattlin & James Bay are Coarse Spodumene Projects

Patriot Battery Metals Announces Largest Lithium Pegmatite Resource in Americas at CV5, Corvette Property, Quebec, Canada

- **109.2 Mt at 1.42% Li₂O and 160 ppm Ta₂O₅ inferred, (0.40% Li₂O cut-off grade).**



Allkem's big resource upgrade is a positive sign for these James Bay hopefuls



increase in resources to 110.2Mt grading at 1.3% Li₂O in the higher confidence

ASX
LU7

Patriot Battery Metals secures \$124m investment from Albemarle to advance Corvette lithium project



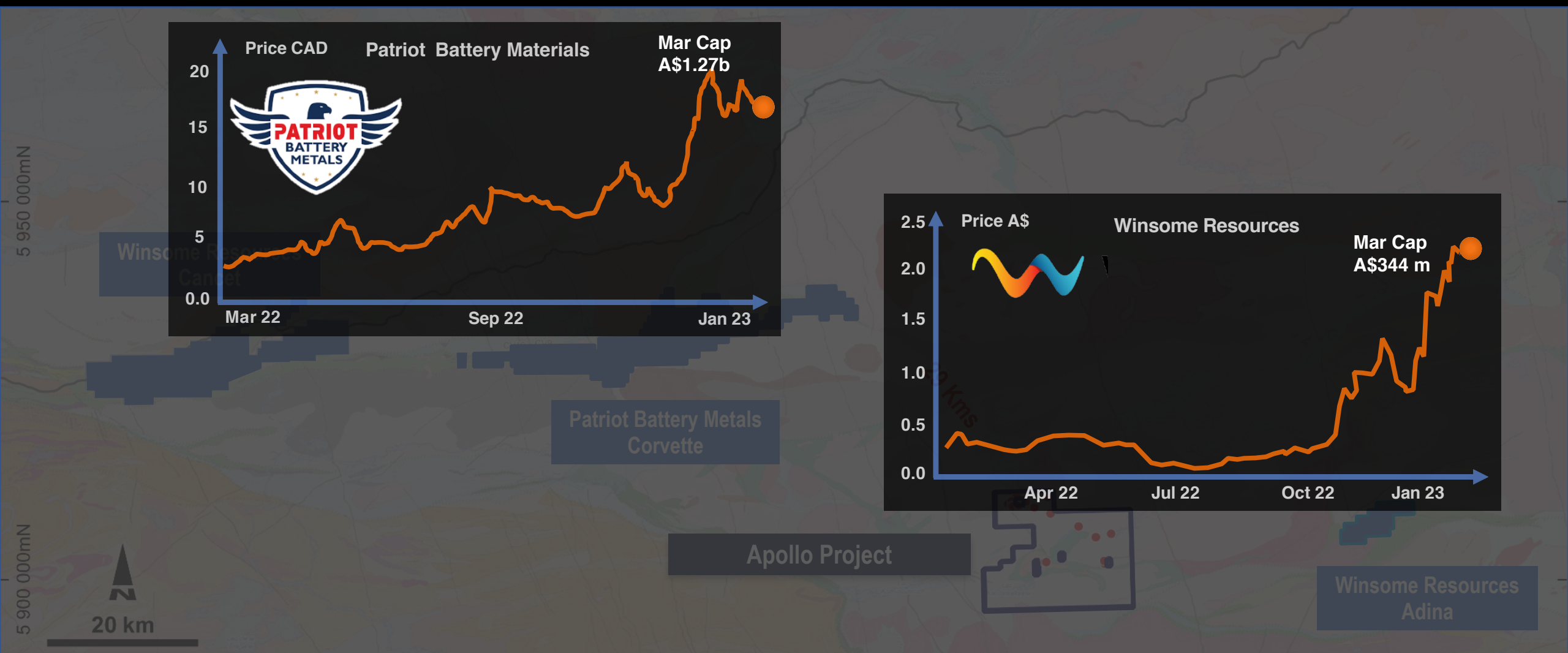
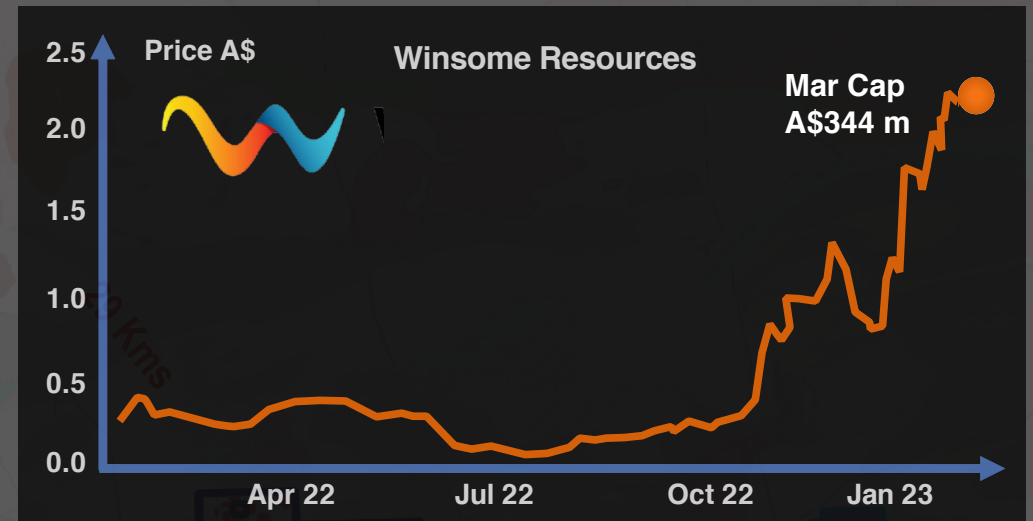
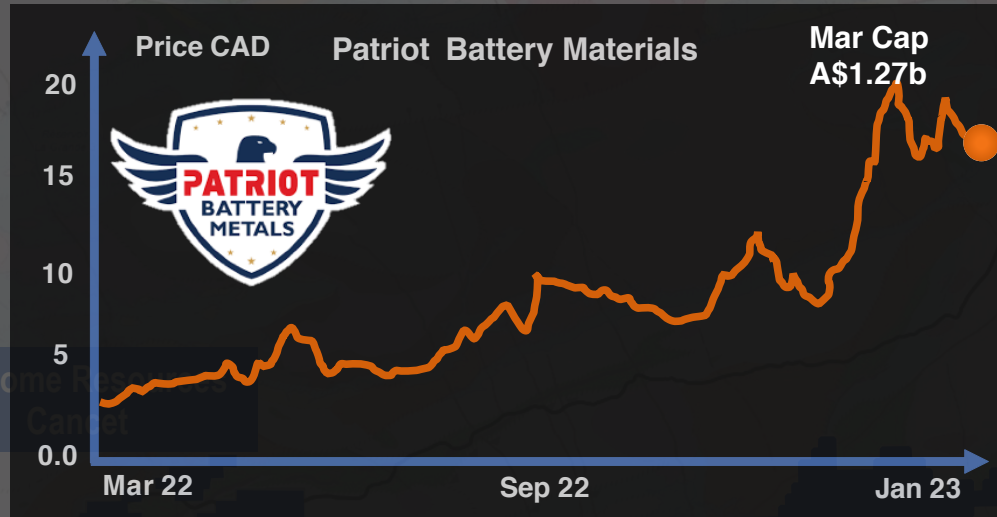
By Colin Hay - August 2, 2023



Midland attracts Rio Tinto as a partner in James Bay lithium district

Rio Tinto signs second Quebec lithium exploration deal

RIO Tinto has signed two option agreements with junior Azimut Exploration on the Corvet and Kaanaayaa lithium properties in Quebec's James Bay district.



Caution: both of the above companies have various projects and their market capitalisation are not necessarily directly referable to that of LU7. The market capitalisations have been provided as a guide to potential value only.



Energetic Team

Lithium Dream Team

Alex Hanly
CEO



Iggy Tan
Chairman
Ex Galaxy MD



Patrick Scallan
NED
Ex GM Talison Lithium



Gernot Abl
Executive Director



Terry Stark
Head of Mining
Ex Galaxy
GM Operations



Dr Jingyuan Liu
NED
Ex Galaxy GM Technology

John Loxton
Head of Li Refinery
Ex Hatch Li Carb Plant



Victoria Vagas
Director Canada



Justin Rivers
Head of Geology



Roger Pover
Head of Processing
Ex Galaxy Plant Manager



Huy Nguyen
Engineering Manager
Ex Mt Cattlin Construction



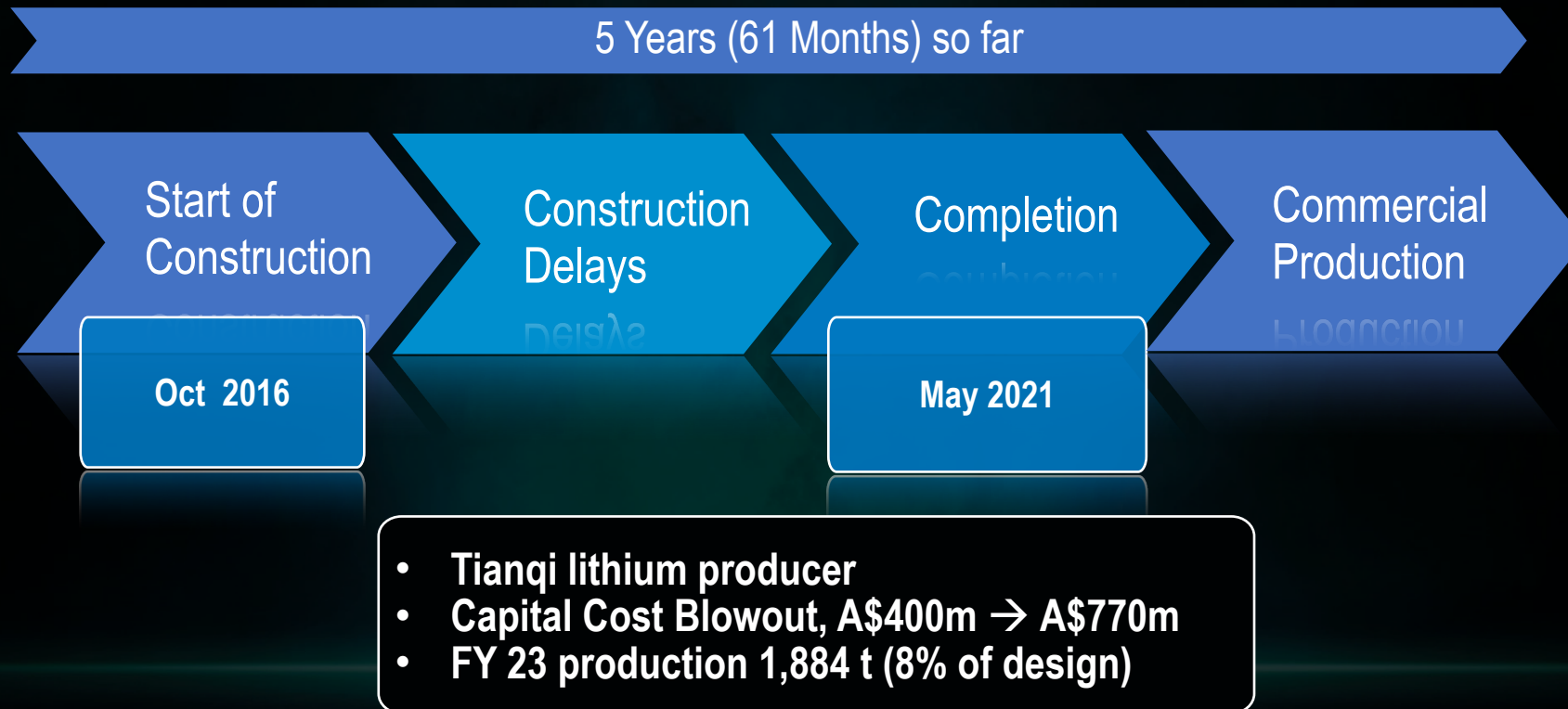
John Sobolewski
Chief Financial Officer
Ex Galaxy CFO & Co Sec



8-10 Years to First Product







Canada Lithium



- DFS completed 2011
- Started 2014
- Spent circa CAD 250m
- Produced 109 t LC
- Bankruptcy 2015

Nemaska Lithium



- DFS completed 2018
- Spent CAD 411 m
- Failed to start up 2019

Dream Team Track Record

Jiangsu Li Carbonate Plant



Why have these projects failed?

- Operating, or maintenance experience at design
- Overall understanding of how the plant should run
- Decision maker and oversight at design
- Proven technology-only philosophy
- Off-the-shelf-only philosophy
- Too much recycling, not enough buffers
- Project silo mentality
- Limited commissioning experience



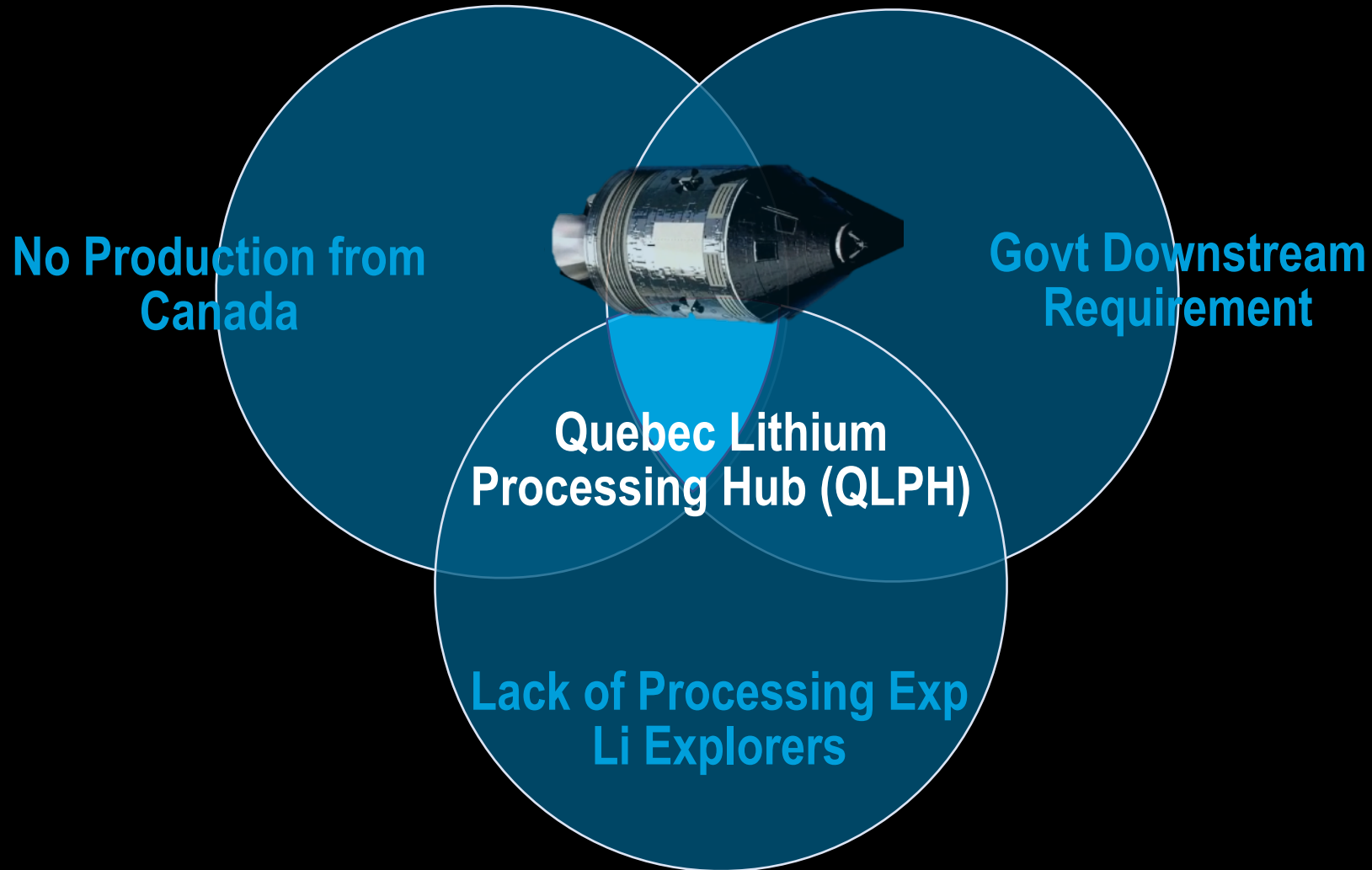
Canada Forcing Critical Minerals Strategy

- Ordered Sinomine to divest from Power Metals Corp
- Relinquish spodumene off-take contract
- Citing “multi-step security review”
- Established automotive industry → EVs
- Canada appears to be forcing a downstream lithium solution

Canada orders China to divest from country's mining companies

Move comes after 'multi-step' review by Canada's national security and intelligence agencies





Quebec Lithium Processing Hub (QLPH) Concept

Mine to Battery Grade Lithium Carbonate Strategy

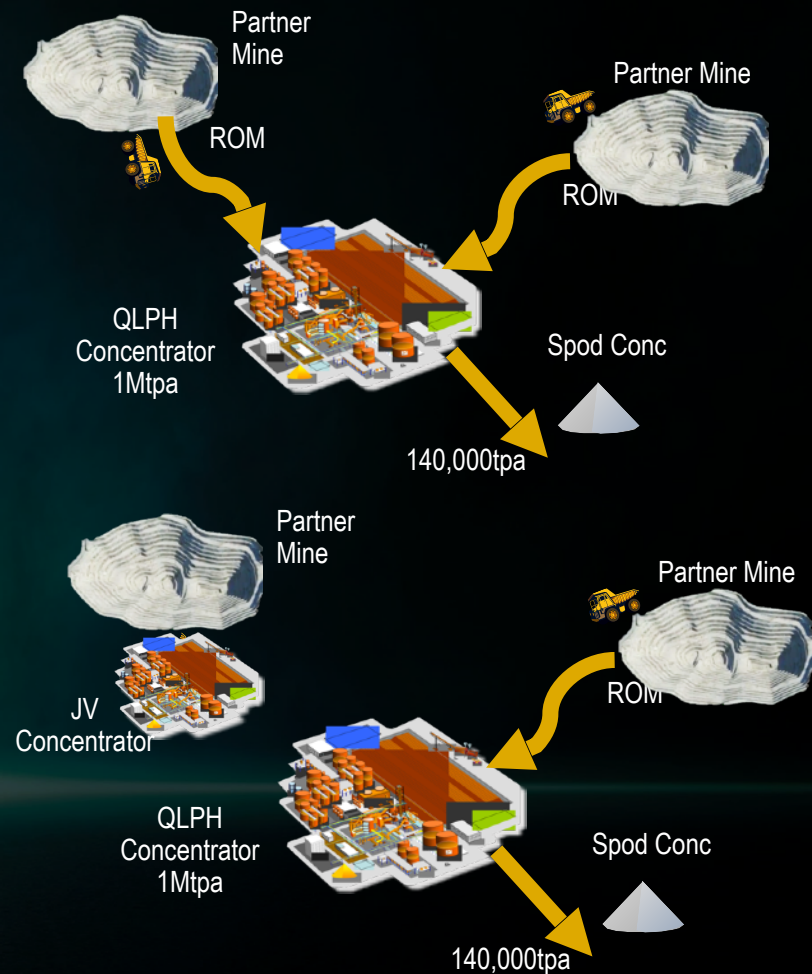


QLPH Concentrator

- Based on proven Mt Cattlin design
- 5 Year ROM off-take JV deal – local juniors
- Not a toll company – purchase ROM
- Brings early cash flow for juniors to develop mines

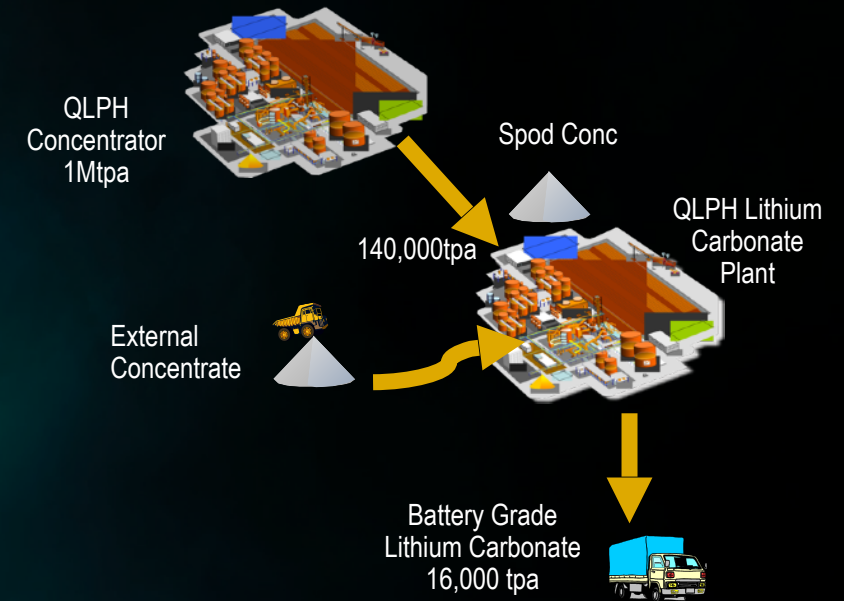
Concentrator JV

- After 5 years JV builds a concentrator on their project
- Replicate QLPH concentrator
- Helps juniors become a concentrate producer



Battery Grade Lithium Refinery

- 16,000 tpa battery grade lithium carbonate plant
- No a toll Company – Purchaser of Concentrate
- Based on proven Jiangsu design
- Battery grade LC sold to Canada, USA, Europe
- Meets Canadian Government critical minerals strategy
- Provides downstream solution for Canadian Li miners



Exploration Commences at Apollo

- Partnered with Laurentia Exploration Inc
- High-resolution Airborne Magnetic Survey completed
- Micro-Gravity and soil sampling program
- Priority drilling targets identified



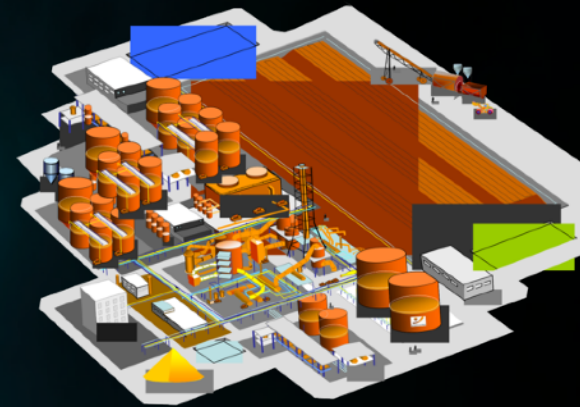
QLPH Concentrator Engineering Study

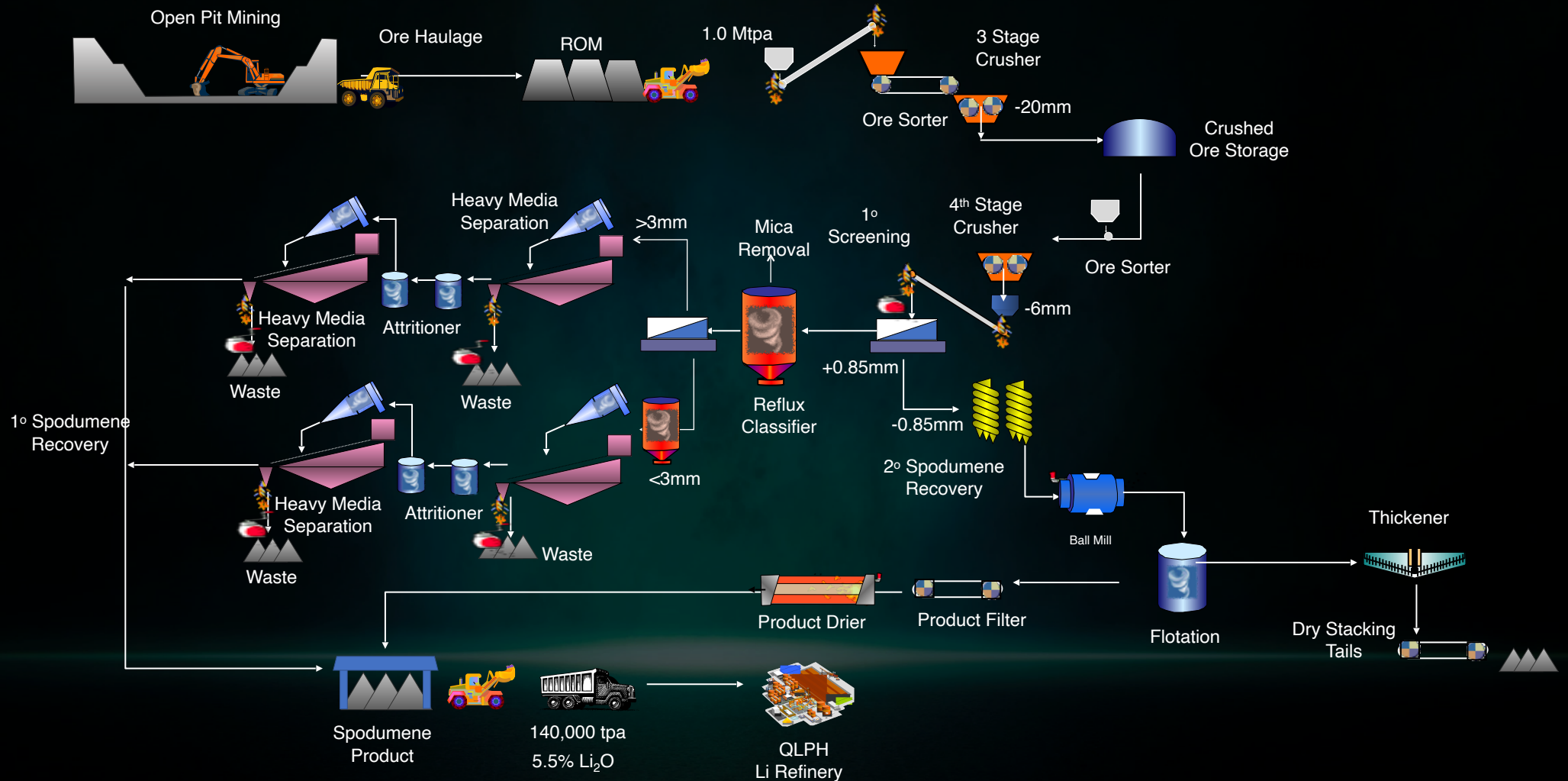
- Primero Engineering Co appointed
- Lithium experience – Bald Hill, Covalent, Core, James Bay
- International Co, Aust based, Toronto Office
- Today's price to build a Mt Cattlin style concentrator in Canada
- DFS level of study



PRIMERO

2

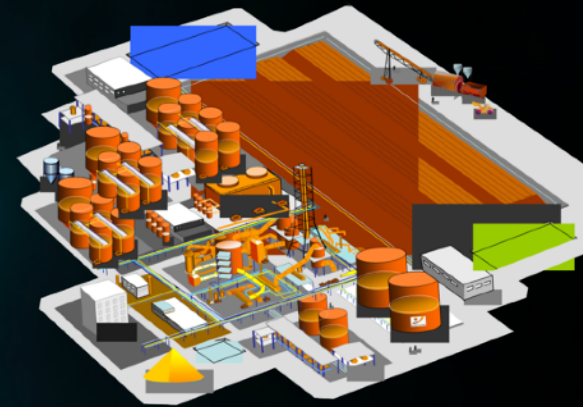




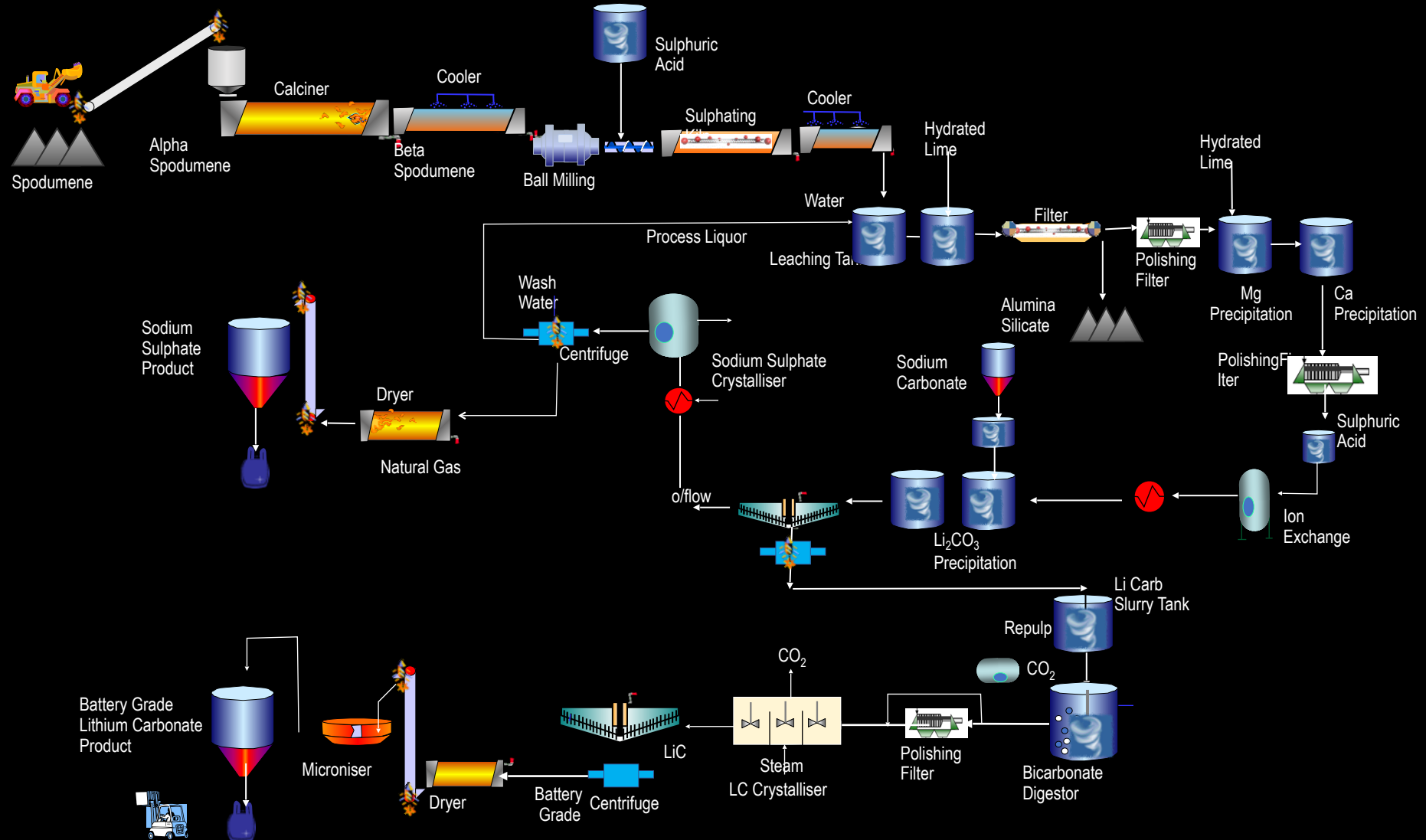
QLPH Lithium Carbonate Engineering Study

3

- Hatch Engineering Company appointed
- Canadian Co, Aust based, Canadian Offices
- Quebec experience (Raglan, Jansen, Gahcho Kué)
- Built Jiangsu Li Carbonate Plant
- Today's price to build a Jiangsu style refinery in Canada
- DFS level of study



HATCH



Filling the Downstream Gap

- Little Merchant Lithium Refineries in Nth America
- Big gap that needs to be plugged
- Our focus is to start at downstream and work upstream
- Strong investment interest - Investment Quebec
- Discussions with many juniors – target establish resource
- Location study for Li Refinery completed



Li Carb Refinery Location Study



- Hatch conducted study
- NG, HV electricity, water, rail, road, and port facilities
- Labor availability, costs, waste management
- Bécancour Industrial Park most favoured
- Bécancour port, St Lawrence River, 80km Québec City
- Commenced discussions with the industrial park

Lot 22 (~27 ha)

Draft Purchase Agreement

- Becancour Industrial Park (Quebec and Montreal)
 - Nemaska Lithium
 - POSCO /GM Battery Plant
 - Alcoa/Rio Tinto Alcan
- Utilities:
 - Hydro-electricity, Natural gas
 - Industrial waste facility
- Strategic position
 - Nearby highway access
 - Serviced by Canadian National Railway
 - Access to deepwater port





Why Li Carbonate not Li Hydroxide?

- We have a proven track record in Li Carbonate
- 47% Li Carbonate used around the world
- Li Carbonate feed for LFP lithium batteries
- LFP battery growth due to safety and costs
- Tesla moving to LFP batteries



Apollo Lithium Project

Between two major discoveries, large potential

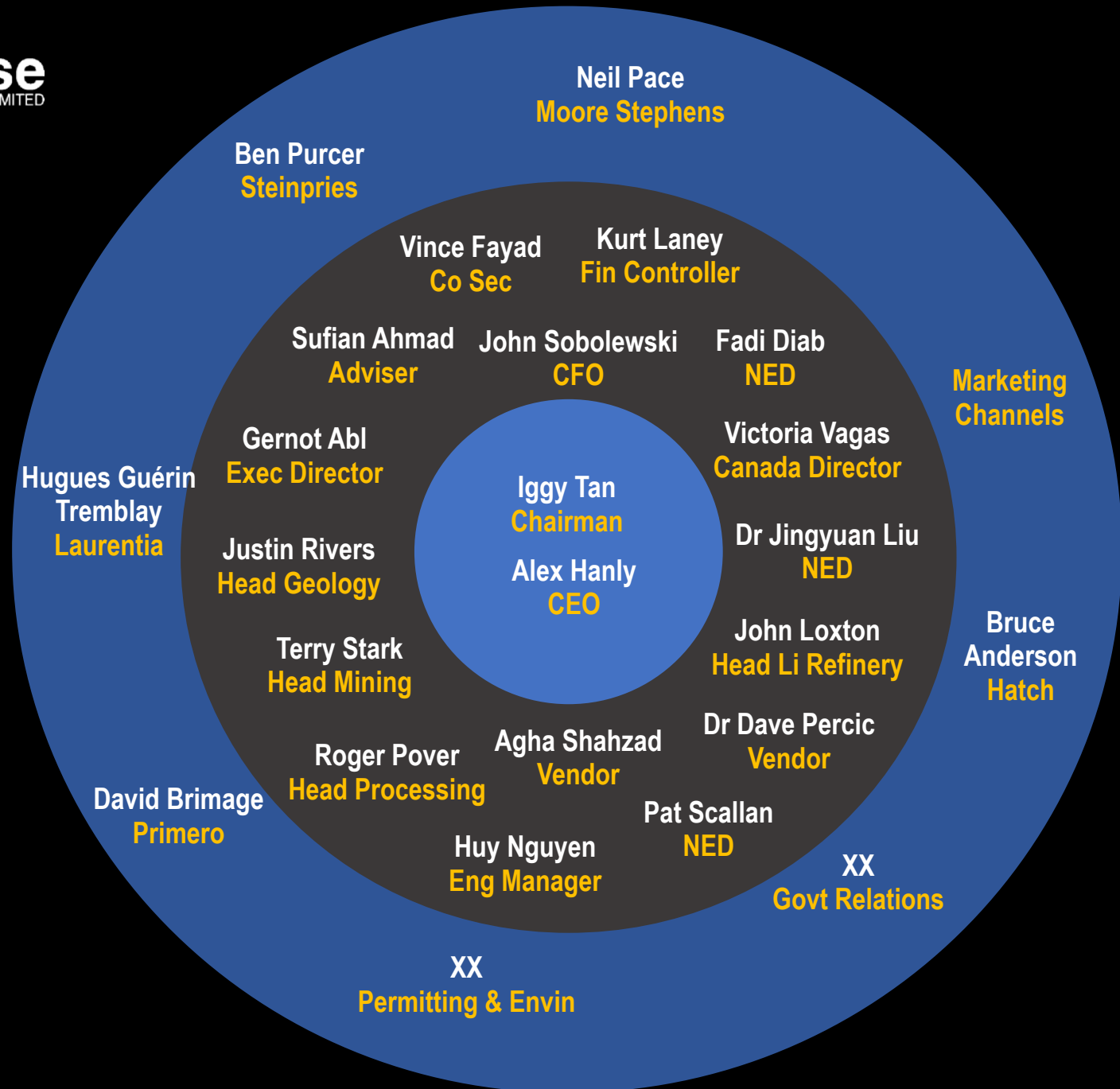
Lithium Dream Team

Proven Lithium Track Record

Quebec Lithium Processing Hub Concept

Vertically integrated mine to battery grade lithium strategy

Organisation Structure



**Join us on our Mission to
the Universe**

Building a Lithium Future

