



**AN EMERGING COPPER DEVELOPER  
ADVANCING WITH THE GLOBAL SHIFT  
TOWARD ELECTRIFICATION AND  
DECARBONIZATION**

TSX: ATCU | OTCQX: ATCUF | BVL: ATCU  
[www.altacopper.com](http://www.altacopper.com)  
November 2023

# CAUTIONARY LANGUAGE – FORWARD LOOKING STATEMENTS

---

The material contained in this presentation is provided solely for your general knowledge and is not intended to be a comprehensive review of all matters and developments concerning Alta Copper Corp. (“Alta”) or its affiliates. Alta has taken all reasonable care in producing the information contained in this presentation. This information may still contain technical or other inaccuracies, omissions, or typographical errors, for which Alta assumes no responsibility. Alta makes no representation or warranty regarding, and assumes no responsibility for, the use, validity, accuracy, completeness, reliability or currency of any claims, statements or information in this presentation.

By attending or reviewing this presentation, you agree that Alta will not be liable for any injuries, losses, expenses or damages arising from the use of or reliance on information contained in this presentation, or any inaccuracy or omission in such information or failure to keep the information current. The information in this presentation is not a substitute for obtaining independent professional advice before making any investment decisions.

The information contained in this presentation does not constitute an offer or the solicitation of an offer for the purchase of any securities of Alta. This information is not intended in any way to qualify, modify or supplement any information disclosed under the corporate and securities laws of any jurisdiction applicable to Alta. No securities commission or similar authority in Canada or any other country or jurisdiction has in any way passed on any of the information contained in this presentation and no representation or warranty is made by Alta to that effect.

## Cautionary Note to U.S. Investors

We advise U.S. investors that this presentation uses terms which are not recognized by the United States Securities and Exchange Commission (“SEC”), including “mineral resources”, “measured resources”, “indicated resources” and “inferred resources”. The estimation of measured & indicated resources involves greater uncertainty as to their existence and economic feasibility than the estimation of proven and probable reserves. U.S. investors are cautioned not to assume that mineral resources in these categories will be converted to reserves.

The estimation of inferred resources involves far greater uncertainty as to their existence and economic viability than the estimation of other categories of resources. U.S. investors are cautioned not to assume that estimates of inferred mineral resources exist, are economically mineable, or will be upgraded into measured or indicated mineral resources. U.S. investors are cautioned not to assume that mineral resources in any of these categories will be converted into reserves.

This presentation also contains information about adjacent properties on which we have no right to explore or mine. We advise U.S. investors that SEC mining guidelines strictly prohibit information of this type in documents filed with the SEC. U.S. investors are cautioned that mineral deposits on adjacent properties are not indicative of mineral deposits on our properties.

*Joanne C. Freeze, P.Geol is the Qualified Person for all Information included herein.*

# ALTA COPPER - WHY INVEST?

## Advanced Development Stage Project

- One of the world's largest undeveloped copper projects not held by a major
  - Cañariaco Norte Resource (See Note 1): 9.3B lbs Cu, 2.14M oz Au, 59.4M oz Ag Measured & Indicated, 2.7B lbs Cu, 0.54M oz Au, 18.1M oz Ag Inferred
  - Cañariaco Sur Resource (See Note 1): 2.2B lbs Cu, 1.2M oz Au, 15.0M oz Ag, 18.9M lbs Mo Inferred
- 2022 Preliminary Economic Assessment ("PEA"): NPV<sub>(8%)</sub> = \$1.01B NPV at \$3.50/lb Cu, IRR=17%, Low CapEx of \$1.04B
- US\$150M of Cumulative Expenditures to date - drilling, metallurgical test-work, various engineering studies (previously advanced to Pre-Feasibility)
- Project significantly de-risked and positioned to take advantage of the current copper cycle → limited work is required to rapidly advance project
- 3<sup>rd</sup> party validation: Fortescue Metals Group (ASX:FMG, Market Cap = A\$60B) owns 25.4% of shares outstanding
- Top 10 Project with potential to be acquired by third party - RFC Ambrian

## New Strategy

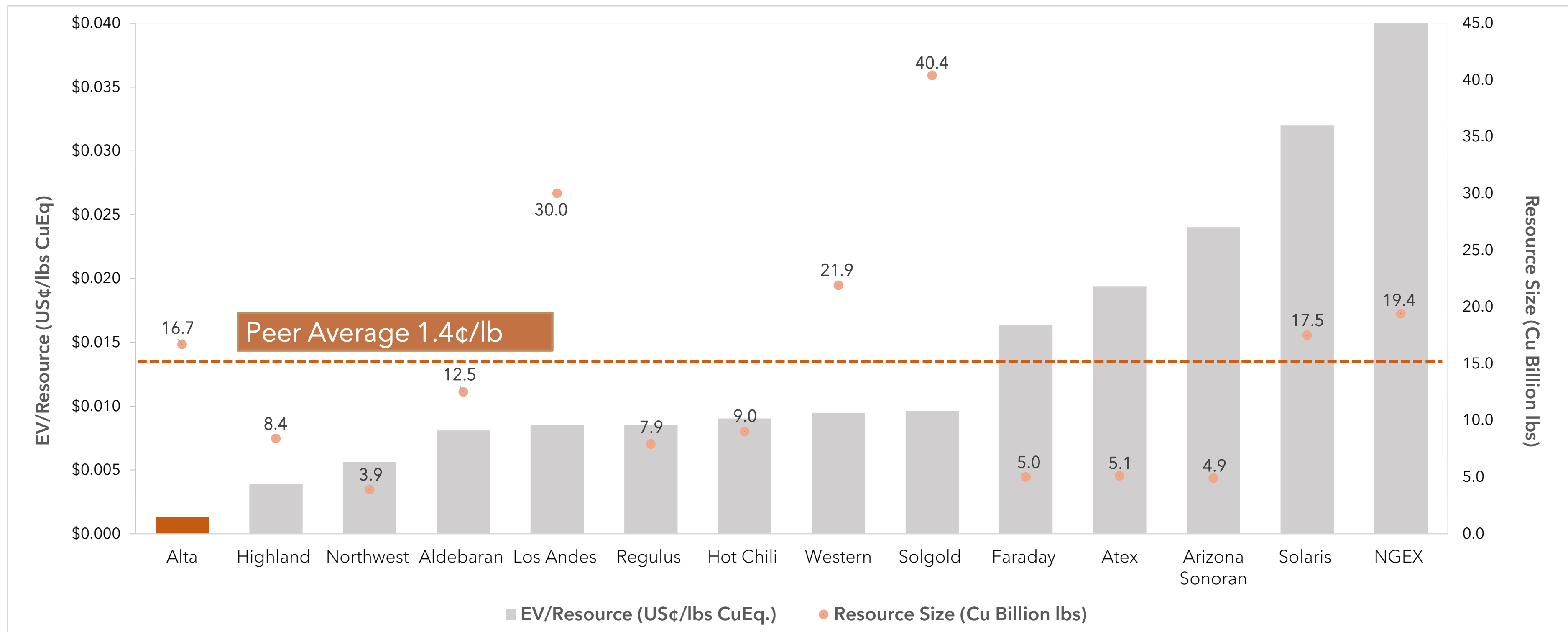
- Drilling - Significant upside remains based on recent 3D Geological Modelling - Last Drilled in 2013 - Success Driven drilling to date of only 85,000 meters
- Daylight value through market awareness, corporate strategy and project execution
- Focus on Capital Markets / Project Value Add / Advance Community Relations

## Upcoming Value Catalysts → Leverage to Copper

- Immediate value re-rate potential → Alta trades at less than 1/9th of peers on US¢/lb CuEq Resource
- Focus on updating the Preliminary Economic Assessment with Whittle Consulting ("Whittle") and Ausenco Engineering ("Ausenco") - Whittle recently optimized the Los Azules Project, Argentina for McEwen Mining (project has ~\$500M value today)
- Commence drilling by Q2-2024 | Drill Permit Application In Progress & Advancing | Several High priority drill targets identified to date
- Continue to advance community relations after an extended inactive period on the project

# COMPANY BENCHMARKING - EV/RESOURCES (US¢/lb CuEq)

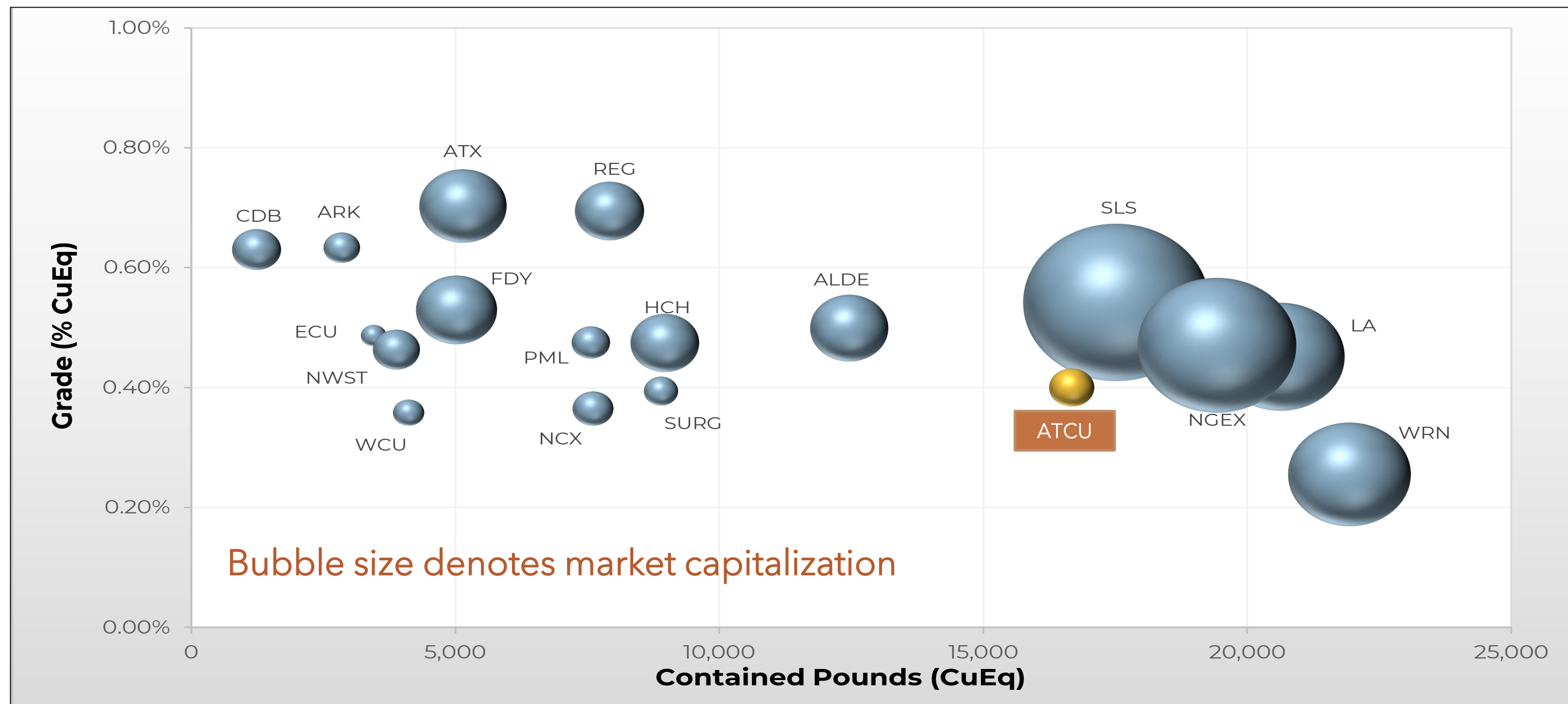
- Cañariaco is trading at less than 1/9<sup>th</sup> of the Peer Average
- Immediate value re-rate potential as the company is re-positioned and executes on current strategy



Note 1: Amounts Shown in Bar Chart Reflect Total Resources (Stated in Billions of lbs.) based on copper equivalent. Enterprise Value reflected is as November 3, 2023 | Note 2: Copper Equivalent grades including contributions from gold and silver, were estimated using metal prices (Copper US\$3.50/lb; Gold US\$1,650/oz.; Silver US\$21.50/oz.; metallurgical recoveries of Copper 88%; Gold 65%; Silver 57%.

# COMPANY BENCHMARKING - MARKET POSITION

- Cañariaco is well positioned as one of the largest copper resources with above average grades
- Currently trading at a significant discount to peers



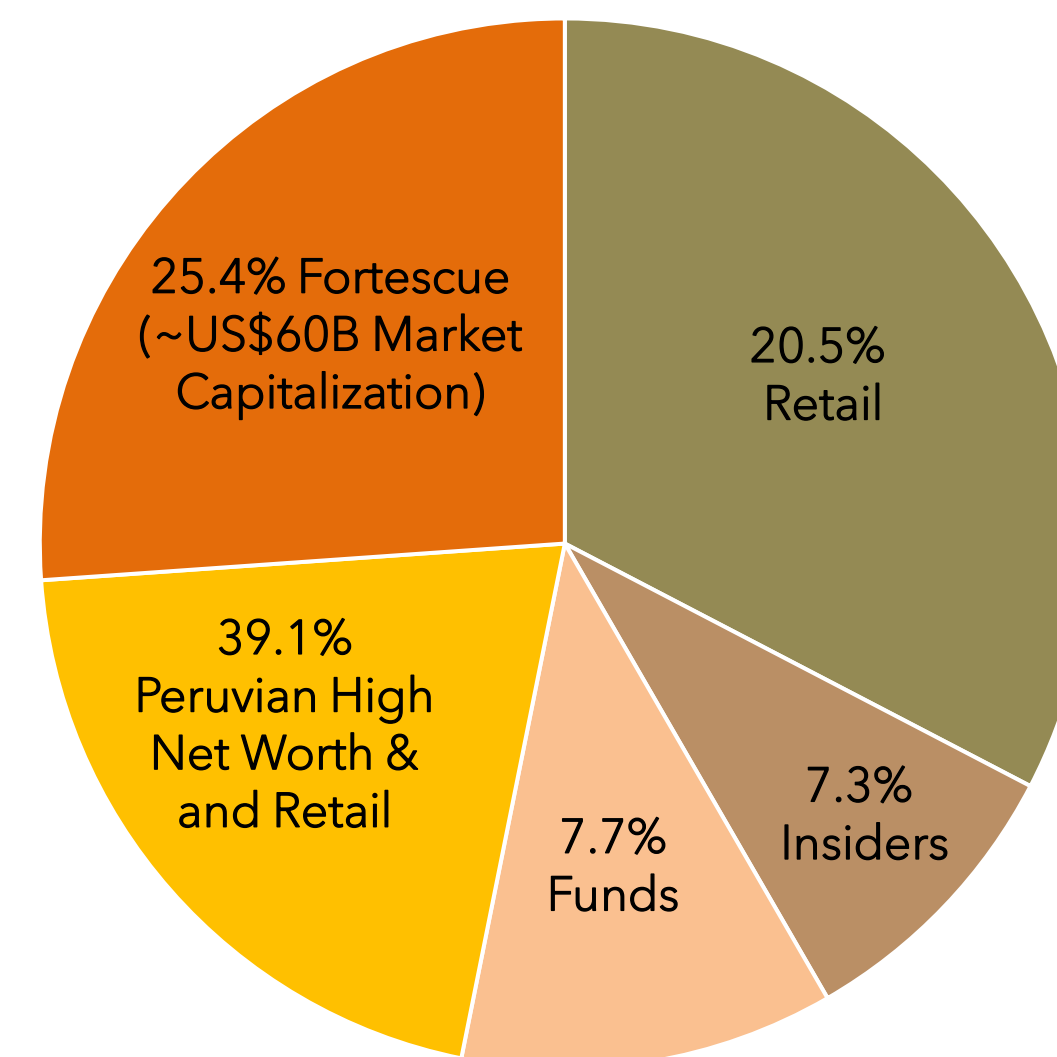
# CORPORATE STRUCTURE

## Capital Structure (Stated in Millions)

Shares Issued and Outstanding	77.9
Options	5.4
RSU and DSU	1.1
<b>Total Shares - Fully Diluted</b>	<b>84.4</b>
Market Capitalization (Basic)	C\$30.0
Enterprise Value	C\$31.0
US cent/lbs. CuEq.	.0016¢

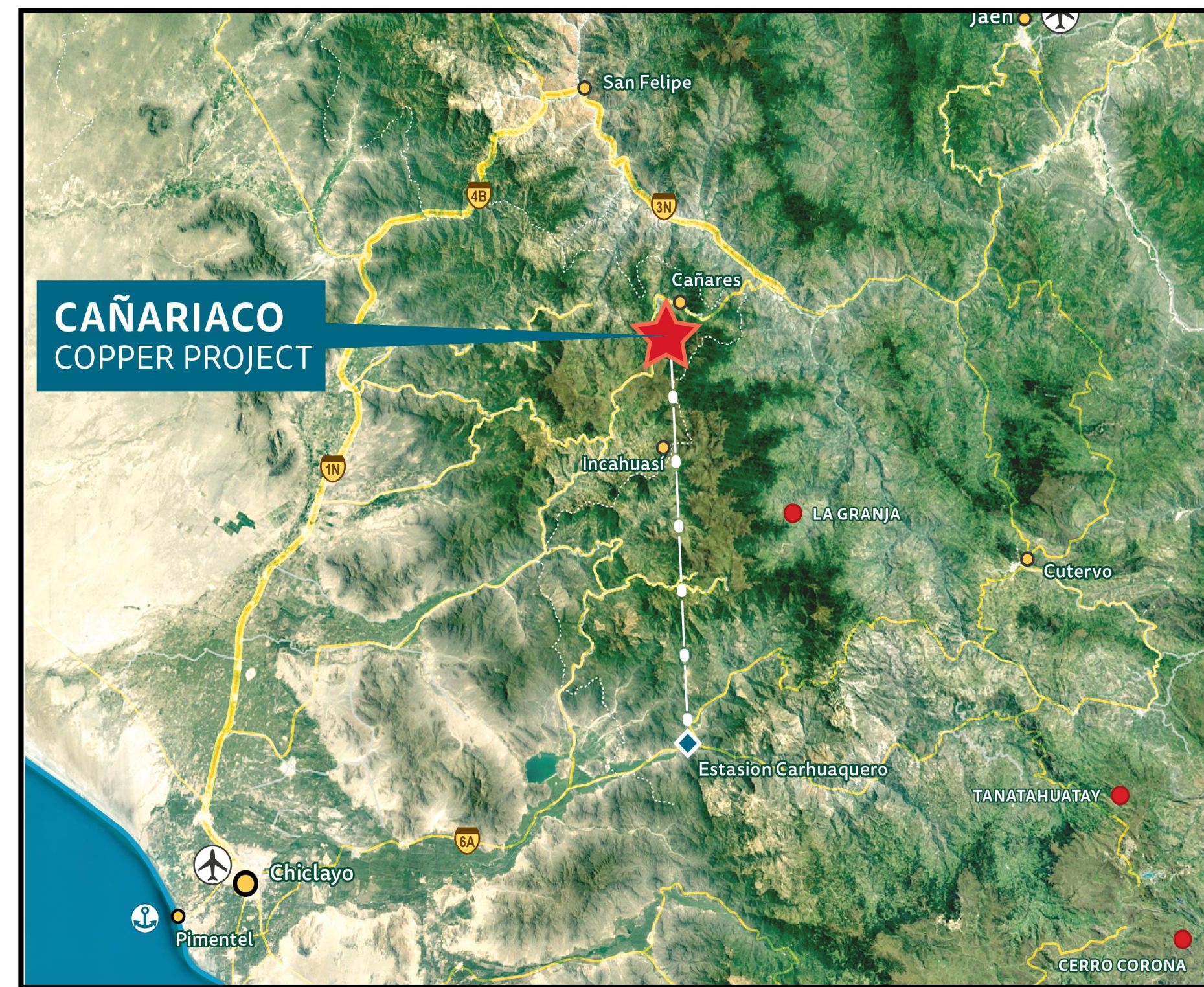
*2023 Financings at Plus 30% Premium to Market:  
(\$4.9 Million @ \$0.72 and \$1M @ \$0.50 per share)*

## Shareholder Registry



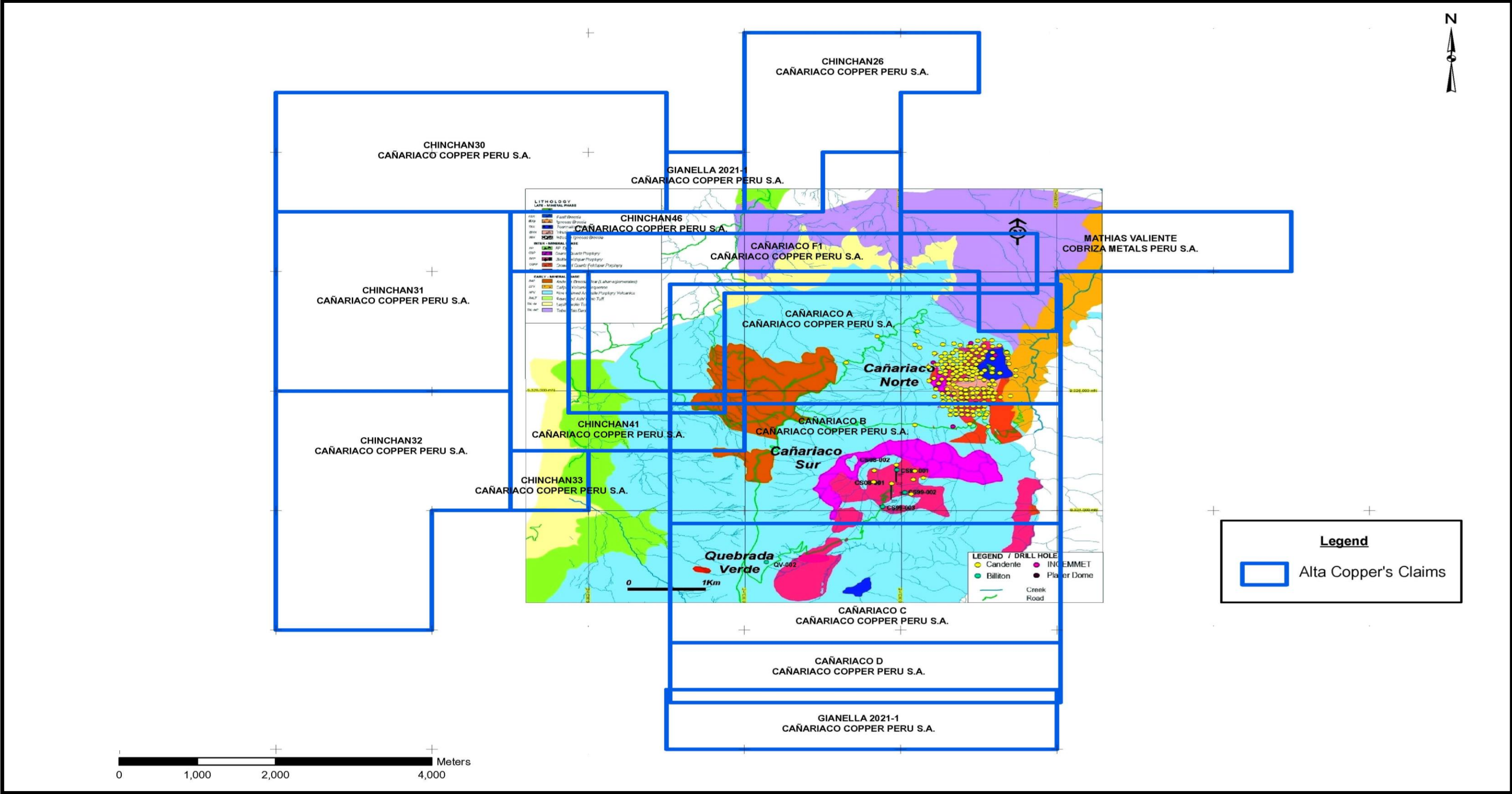
# CAÑARIACO PROJECT - LOCATION

- Cañariaco is surrounded by major multibillion dollar mining projects
- Situated closer to the coastline than many Andes projects; strong infrastructure and access



Route from Chiclayo to Cañariaco is approximately 150 kilometers, approximately six-hour trip by road

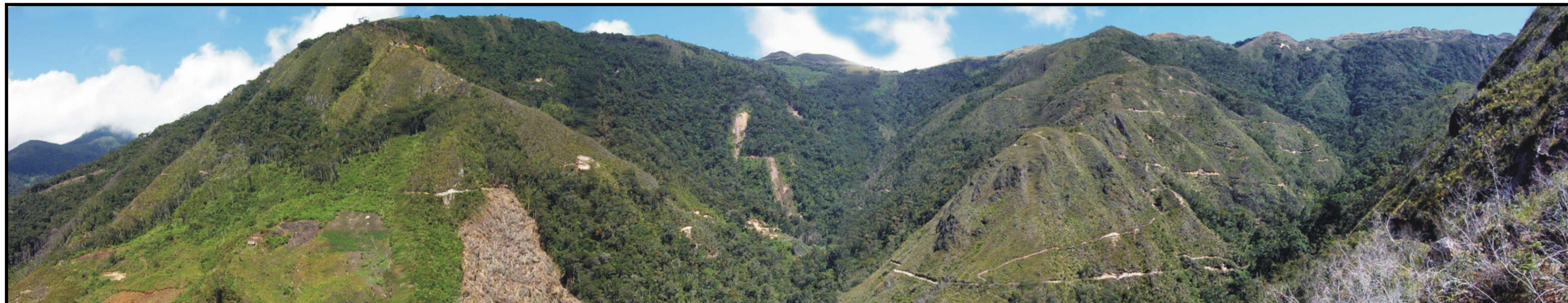
# MAP OF PROPERTY - 100% OWNED - 97 SQUARE KILOMETERS





# CAÑARIACO PROJECT - LOCATION

View of Cañariaco Norte Mineral Resource Looking West



# CAÑARIACO - TWO RESOURCES, HOW MANY DEPOSITS?

## Cañariaco Norte *(Note 1)*

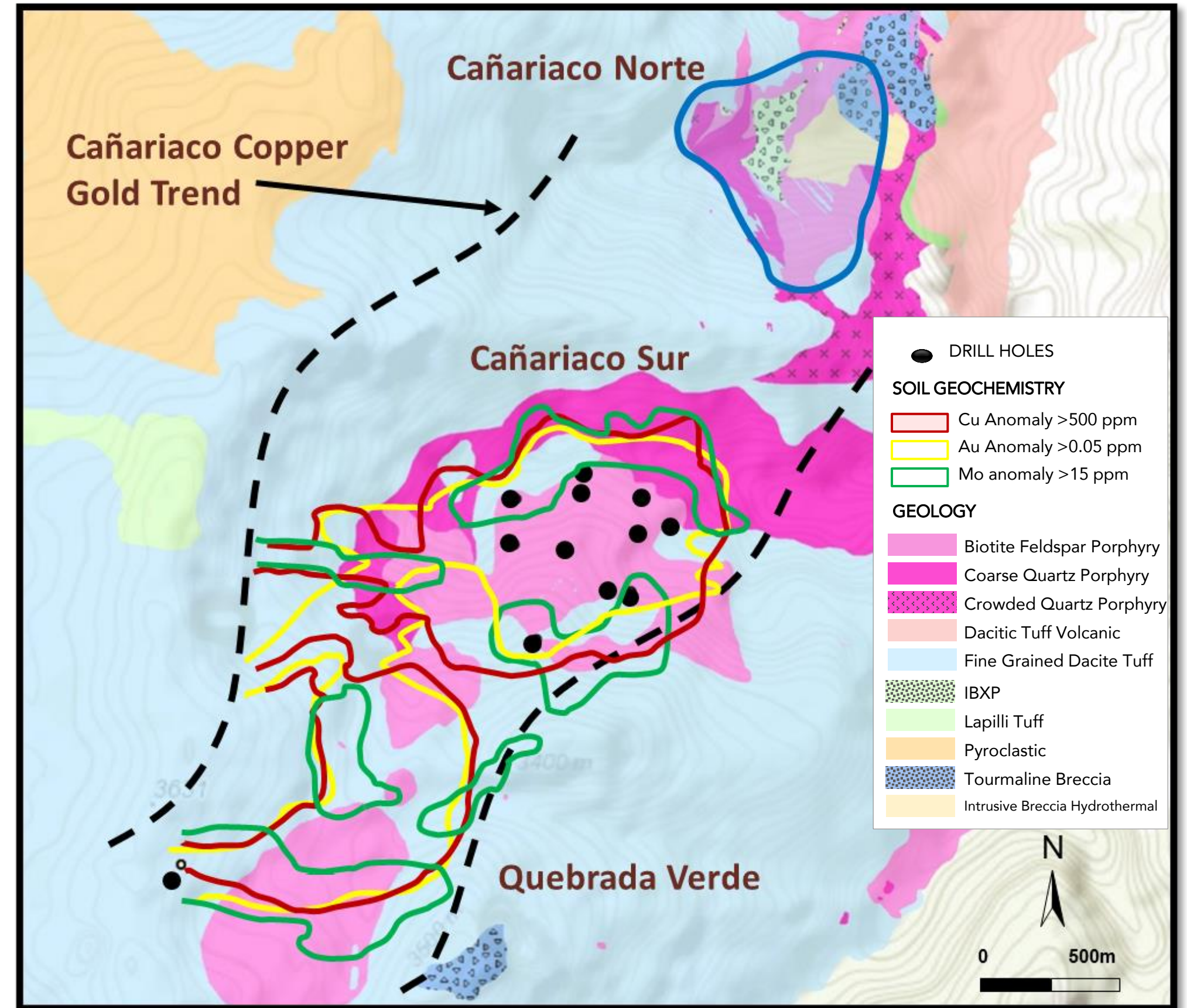
- Measured & Indicated - 9.3B lb. Cu | 2.1M oz. Au | 59.4M oz. Ag
- Inferred - 2.7B lb. Cu | 0.54M oz. Au | 18.1M oz. Ag
- Less than 0.66:1x strip ratio

## Cañariaco Sur *(Note 1)*

- Initial resource with upside on only 15 Drill Holes
- Inferred - 2.2B lb. Cu | 1.2M oz. Au | 15M oz Ag | 18.9M lbs. Mo
- Very shallow mineralization

## Quebrada Verde

- High potential copper gold porphyry target with strongly anomalous levels of copper and gold in soil samples



Note 1 - See Slide 11 For Detailed Mineral Resource Estimate

# CAÑARIACO PROJECT - RESOURCE ESTIMATES

- Cañariaco Norte and Sur are two deposits within a much larger district-scale project → both resources are open in all directions
  - Cañariaco Norte mineralization starts at surface, and has an extremely low strip ratio (0.66:1x); grade and strip ratio drive project economics
  - Cañariaco Sur mineralization starts at surface with excellent upside and prospective targets

## Cañariaco Norte - Mineral Resource

Measured and Indicated Resource Summary									
Cu Cut-Off	Tonnes (Mt)	CuEq <sup>1</sup> (%)	Cu (%)	Au (g/t)	Ag (g/t)	Contained Metal			
						Cu (B lbs)	Au (M Ozs)	Ag (M Ozs)	CuEq (B lbs)
0.30%	752.4	0.49%	0.45%	0.070	1.9	7.53	1.67	45.24	8.60
0.20%	1,003.0	0.44%	0.40%	0.060	1.7	8.94	2.07	56.10	10.26
0.15%	1,094.2	0.42%	0.39%	0.060	1.7	9.29	2.14	59.43	10.66
Inferred Resource Summary									
0.30%	157.7	0.44%	0.41%	0.06	1.8	1.43	0.30	8.93	1.63
0.20%	293.3	0.36%	0.33%	0.05	1.5	2.17	0.47	14.22	2.48
0.15%	410.6	0.32%	0.29%	0.04	1.4	2.66	0.54	18.09	3.03

## Cañariaco Sur - Mineral Resource

Cañariaco Sur Inferred Resource											
Cu Cut-Off	Tonnes (Mt)	CuEq <sup>1</sup> (%)	Cu (%)	Au (g/t)	Ag (g/t)	Mo (ppm)	Contained Metal				
							Cu (B lbs)	Au (M Ozs)	Ag (M Ozs)	Mo (M lbs)	CuEq (B lbs)
0.20%	290.0	0.35%	0.29%	0.11	1.3	22	1.85	0.98	11.88	14.25	2.43
0.15%	384.5	0.32%	0.26%	0.10	1.2	22	2.22	1.18	15.02	18.91	2.93
0.10%	433.2	0.30%	0.25%	0.09	1.2	22	2.36	1.26	16.39	20.80	3.12

Note 1 - See Slide 21 (Note 1 for Cañariaco Norte & Note 2 for Cañariaco Sur)

# CAÑARIACO NORTE - 2022 PEA RESULTS

- Attractive Economics: NPV<sub>(8%)</sub> → \$1.01B @ \$3.50 lb Cu, IRR = 16.3%, NPV/CAPEX Ratio → 1.0x
- Very Low Capital Intensity - Capex Reduced to \$1.04B with staged build to increase financing options
- Ability to Phase Construction - expansion to 80,000 tpd with additional capital of only \$305M funded from operations
- Robust, Large Production Profile with Scale Over Long Mine Life (28 years):
- Life of Mine: 173 Mlb (78.5kt) Cu, 31kcozs Au, 704kcozs Ag
  - First 6 years: 120 Mlb (55kt) Cu; 24 kcozs Au; 549 kcozs Ag
  - Subsequent 22 years: 193 Mlb (88kt) Cu; 34kcozs Au; 756kcozs Ag
- Low Strip Ratio: 0.66:1
- High Recoveries over LOM: 88.1% Cu; 64.7% Au; 57.2 Ag
- Lowest Decile Operating Cost Profile: US\$1.25/lb Cu average over LOM
- Stronger ESG Profile: marketable concentrate with no need for arsenic treatment, decreased environmental footprint with single waste management facility
- Untapped Upside Growth Potential: 28-year initial mine life, with several opportunities to extend the mine life, including mining additional resources below the proposed pit, inclusive of further resource expansion

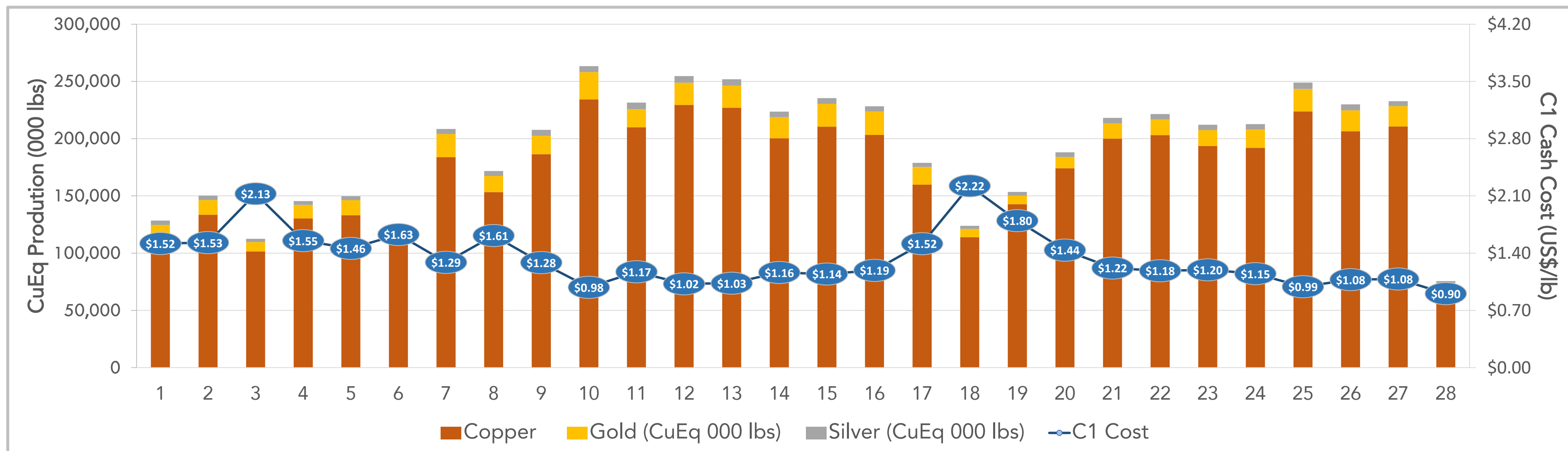
# CAÑARIACO NORTE - 2022 PEA RESULTS AND SENSITIVITIES

	Unit	PEA			
Copper Price	\$/lb	\$3.50	\$4.00	\$4.50	\$5.00
Pre-Tax NPV <sub>(8%)</sub>	\$M	2,023	2,754	3,485	4,216
Post-Tax NPV <sub>(8%)</sub>	\$M	1,010	1,423	1,833	2,241
Post-Tax IRR	%	16.3%	19.2%	21.9%	24.4%
Post-Tax Payback Period	Years	7.1	6.3	4.5	3.8
Avg Annual Cash Flow	\$M	229	278	326	375

Highly Economical Today at \$3.50/lb Cu  
 + Significant Leverage to the Price of Copper

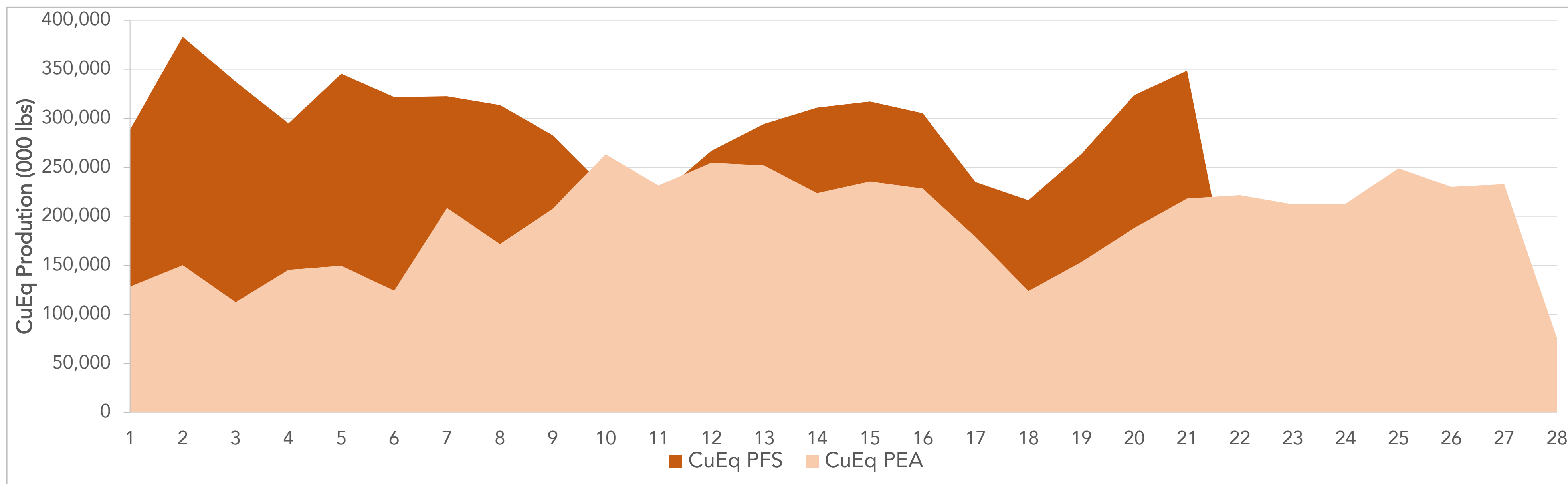
# CAÑARIACO NORTE - PEA PRODUCTION & COSTS

- Cañariaco will produce +195Mlbs of CuEq/year over 28 year life of mine → long life mine, robust production profile
- C1 cash cost average over life of mine = \$1.25/lb → lowest quartile of cost curve, high margins
- Copper generates plus 90.1% of revenues (Gold 7.7%, Silver 2.2%)



# NORTE - PEA (40ktpd to 80ktpd) vs. PFS (95ktpd) PRODUCTION PROFILE

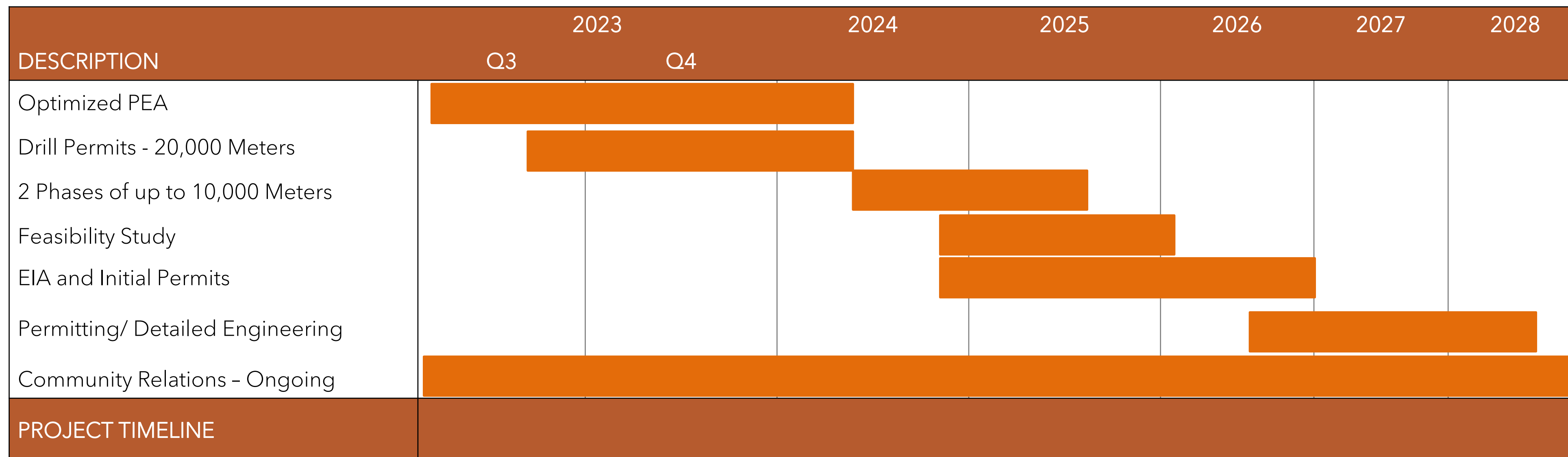
- Economies of scale when increasing daily tonnage to 95ktpd. The updated Optimized PEA to be published by Q3-2023 will increase daily tonnage rates of up to 110ktpd
- 95ktpd Scenario - Historical 2011 Prefeasibility Study has large upfront production profile → 1st 10 Year average = 311Mlbs CuEq/year
- Average production over life of mine in 95ktpd Scenario = 296Mlbs CuEq/year



See Slide 22 Note 5 "Cautionary Note"

# CAÑARIACO PROJECT TIMELINE

- Focused on re-starting community engagement while advancing Drill Permits (expected approval in Q1-2024)
- In parallel, Optimized PEA will be advanced by Ausenco and Whittle
  - Whittle recent project optimization of Los Azules Project, Argentina (McEwen Copper, ~ US\$500M valuation)
  - Whittle has identified key value drivers expected to significantly increase already robust project economics at Cañariaco
  - Increased daily tonnage rates up to 110ktpd significantly increasing annual production
  - Refine the tax calculation to more appropriately reflect the after-tax impact





# CAÑARIACO PROJECT - MINING IN PERU

## Peru Mining Investment

- Mining Investment in Peru reached US\$5.2B in 2021 (21% higher than 2020) with Peru's Mining exports reaching a record high of US\$40 Billion in 2021
- Second Largest Copper Producer After Chile
- Excerpt - October 19, 2023 Financial Times

*"Mining is the backbone of Peru's economy, accounting for 60 per cent of exports and about 10 per cent of gross domestic product. In recent months, the government of Boluarte, who last year criticized big miners, has vowed to increase mining investment, reduce red tape, and get 46 projects under way – all with a potential investment of US\$53 billion. "One of the objectives of this government is to unblock all mining projects" commented Peru's mining minister, Oscar Vera.*

*The Boluarte administration now hopes some big companies will start greenfield projects, such as the US\$1.2bn Zafranal mine of Canada's Teck Resources, which was approved in May. In total, Boluarte's government has approved projects worth US\$5 billion this year.*



## EXPERIENCED LEADERSHIP TEAM

---

### Giulio T. Bonifacio - Executive Chair & Director

- 30 plus years in senior executive roles in global mining industry. Chartered Professional Accountant with considerable experience and knowledge of operations, capital markets and project finance while raising significant amounts of capital for projects of merit by way of project debt, offtake, and equity.
- Founder, past President and Director of Nevada Copper from 2005 until his retirement in February 2018. During his 12 years at Nevada Copper Mr. Bonifacio successfully permitted both the underground and open pit operations at Pumpkin Hollow, which is the only permitted copper project of scale in the United States in the past 25 years.
- Non-Executive Chair of NevGold Corp.
- Former President, CEO and Non-Executive Chair of Faraday Copper Corp. (formerly "CopperBank Resources Corp.").

### Dale Found, CPA, CA, FCA (UK) - Vice President, Chief Financial Officer

- 30 years of international accounting & finance experience.
- Significant experience in mine site operational finance and senior leadership Nevada Copper Corp. positioned the mine for construction.
- On team that led New Afton Mine through construction into production delivering on time and on budget, managed all financial matters for New Gold Inc. in Mexico.

### Joanne Freeze, B.A., B.Sc., P. Geo. - Founder, President, CEO & Director

- 25 plus years in senior executive roles in the global mining industry and Professional Geologist with considerable experience and knowledge of exploration, valuations, resource definition and economic studies, capital markets and finance while part of raising over \$120M to date for advanced projects.
- 40 plus years in exploration predominantly in gold and copper in Canada, Peru and Mexico but also diamonds, coal and other commodities for both junior and major companies.
- Lived and worked in Peru in mid 1990's - QP for various Canadian and Peruvian Companies and founded Alta Copper with Fredy Huanqui in 1997.
- Spun-out various assets to form two other companies, also listed on the TSX/TSXV and currently CEO of Xali Gold Corp.

### Sean Waller, M.Sc., P. Eng. - Key Advisor & Director

- Former VP Global Business Development & Senior Project Manager with AMEC Americas' Mining and Metals Division.
- 30 plus years of global experience in copper and gold mine design, operations and evaluations.
- Past President of the Canadian Institute of Mining, Metallurgy and Petroleum ("CIM").

## EXPERIENCED LEADERSHIP TEAM

---

### Luis Miguel Inchaustegui Zevallos, B.A., LLB, MBA - Director

- Extensive mining company experience as VP Corporate Affairs and Sustainable Development for Gold Fields Ltd., including Institutional Communication and Relations.
- Lawyer with 27 years' experience working with mining companies, Peru Government and Inter-American Development Bank on strategic issues, corporate affairs and sustainable development.
- Vice-Minister and Minister of Energy and Mines of Peru from 2018 to 2020.

### Andrew Hamilton, BEng. (Mech) - Director

- Technical Director, Corporate Strategy Team, Fortescue Metals Group Ltd.
- Current role includes managing and reviewing critical metal opportunities. Over his career, Mr. Hamilton has held senior management and directorship roles, providing expertise in engineering, constructing, commissioning and business delivery services to mining, infrastructure and fleet management.
- Joined Fortescue Metals in early 2008 to complete, commission and ramp up Fortescue's first operational Cloudbreak mine with later delivery of the site's wet beneficiation and power station upgrades.
- Led design, construction, commissioning on the Iron Bridge project leading to the delivery of the full-scale Stage 1 developmental plant within a 15-month period. Upon successful operation of Stage 1, Mr. Hamilton managed and delivered the Investment Decision report to the Fortescue Board in 2019, culminating in approval of the 22mtpa Iron Bridge Magnetite JV ("IBJV") Project. Mr. Hamilton held various roles on the US\$3.9bn IBJV project including Project Director and Technical Director.

### Steven Latimer, MBA, HBA, CFA - Director

- Current Managing Director and Head of the Americas for Bacchus Capital Advisers, an independent investment banking boutique.
- Over 30 years' experience as a leading global M&A adviser and has led numerous financings with a focus on both operating and development copper companies operating in the Americas.

### Christine Nicolau - Director

- Metals General Manager, Latin America, Fortescue Metals Group Ltd.
- Responsible for Fortescue's South American minerals business including exploration, project development and other growth activities.
- Has held a range of Management positions across Australia and South America over the last 10 years.

# Appendix

## NOTE DISCLOSURE - MINERAL RESOURCE ESTIMATE

### Notes Mineral Resource Estimate - Cañariaco Norte & Sur:

1. Cañariaco Norte -Copper equivalent grades including contributions from gold and silver, were estimated using metal prices (Copper US\$3.50/lb., Gold US\$1,650/oz., and Silver US\$21.50/oz., metal recoveries (Copper 88%, Gold 65%; Silver 57%) and smelter payables (Copper 96.5%; Gold 93%; Silver 90%). Copper grade equivalent calculation:  $Cu\ Eq\% = \frac{Cu\% + (Au\ grade \times Au\ price \times Au\ recovery \times Au\ smelter\ payable\%) + (Ag\ grade \times Ag\ price \times Ag\ recovery \times Ag\ smelter\ payable\%)}{22.0462 \times Cu\ price \times 31.1035\ g/t \times Cu\ recovery \times Cu\ smelter\ payable\%}$ .
2. Cañariaco Sur - Copper equivalent grades including contributions from gold, silver and molybdenum, were estimated using metal prices (Copper US\$3.50/lb., Gold US\$1,650/oz., US\$21.5/oz and US\$11.00/lb. Mo), metal recoveries (Copper 88%, Gold 65%; Silver 57% and molybdenum 60%) and smelter payables (Copper 96.5%; Gold 93%; Silver 90% and Molybdenum 100%). Copper grade equivalent calculation:  $Cu\ Eq\% = \frac{Cu\ \% + (Au\ grade \times Au\ price \times Au\ recovery \times Au\ smelter\ payable\%) + (Ag\ grade \times Ag\ price \times Ag\ recovery \times Ag\ smelter\ payable\%) + (Mo\ grade \times Mo\ price \times Mo\ recovery \times Mo\ smelter\ payable\%)}{22.0462 \times Cu\ price \times 31.1035\ g/t \times Cu\ recovery \times Cu\ smelter\ payable\%}$ .
3. The Qualified Person for the estimate is David Thomas of DKT Geosolutions Inc.

## NOTE DISCLOSURE - PEA & PFS

---

### Notes PEA & Prefeasibility Study:

1. Cañariaco Norte Project - NI 43-101 Technical Report on Preliminary Economic Assessment, Prepared by Ausenco Engineering Canada Inc. with an Effective date of February 8, 2022.
2. Gold and silver prices used did not vary and are US\$1,650/oz Au and US\$21.50/oz Ag.
3. The financial model is based on open pit mining by the owner with financed mobile mining equipment including scheduled additions and replacements. All other project costs are the responsibility of the Owner, including process and infrastructure pre-production capital, LOM sustaining capital, and closure costs.
4. Tax has been estimated by a third-party tax consultant and include a Peruvian corporate income tax rate of 29.5% (plus 2% during the term of an assumed Stability Agreement), employee profit sharing of 8% of taxable income and mining taxes for the exploitation of mineral resources which are based on the operating profit (mining royalties on a sliding scale of 1% to 12% with a minimum of 1% of sales and special mining tax on a sliding scale of 2% to 8.4%).
5. **Cautionary Note:** Annual Production levels are based on a Historical National Instrument 43-101 Technical Report January 18, 2011 Preliminary Feasibility Study for Cañariaco Project, Lambayeque, Peru and are subject to number of uncertainties and risks, and actual results may differ materially from those contained in such projections and **should not be relied upon by the Reader.**

# CAÑARIACO NORTE - PEA CAPITAL COSTS

- Open pit mine with conventional crush/grind and flotation technology
- Minimal expansion capital from 40ktpd to 80ktpd (+US\$305M)
- Potential for moderate capital cost profile:
  - No concentrate pipeline
  - Use port facilities developed by others
  - Plenty of water at site
  - Relatively soft rock needs less power for crushing and grinding
  - Low waste to ore Strip Ratio of 0.66:1
  - Power supply from national power grid to the mine site by a 220 kv overhead transmission line from the local utility substation at Carhuaquero, 55 km from the mine site

Project Capital Cost Summary		
Cost Area	PHASE I (40,000 tpd) Cost (US\$M)	PHASE II (80,000 tpd) Cost (US\$M)
Pre-stripping	119	-
Mining Infrastructure & Equipment	49	-
Process Plant	360	204
Site Related Infrastructure (Incls. Ext. Power)	85	2
Tailings and Waste Rock Management	116	-
Sitewide Water Services	7	1
Sitewide Power and Lighting	7	-
<b>Subtotal - Directs</b>	<b>743</b>	<b>207</b>
Indirects	137	42
Owner's Cost	14	5
Contingency	149	51
<b>Subtotal - Indirects</b>	<b>300</b>	<b>98</b>
<b>Total Preproduction Capital</b>	<b>1,043</b>	<b>305</b>
Sustaining Capital (Life-of-Mine)	45	74
Closure Costs	-	104
<b>Total Project Capital Cost <sup>(Note 1)</sup></b>	<b>1,088</b>	<b>483</b>

Note 1: See Slide 23 Notes 1 to 4 | Note 2: Capital Cost for mobile mining equipment, drills, haul trucks and shovels (LOM total of US\$71M) is assumed to be financed at 20% down, 4.25% for 60 months.

# CAÑARIACO NORTE - PEA OPERATING COSTS

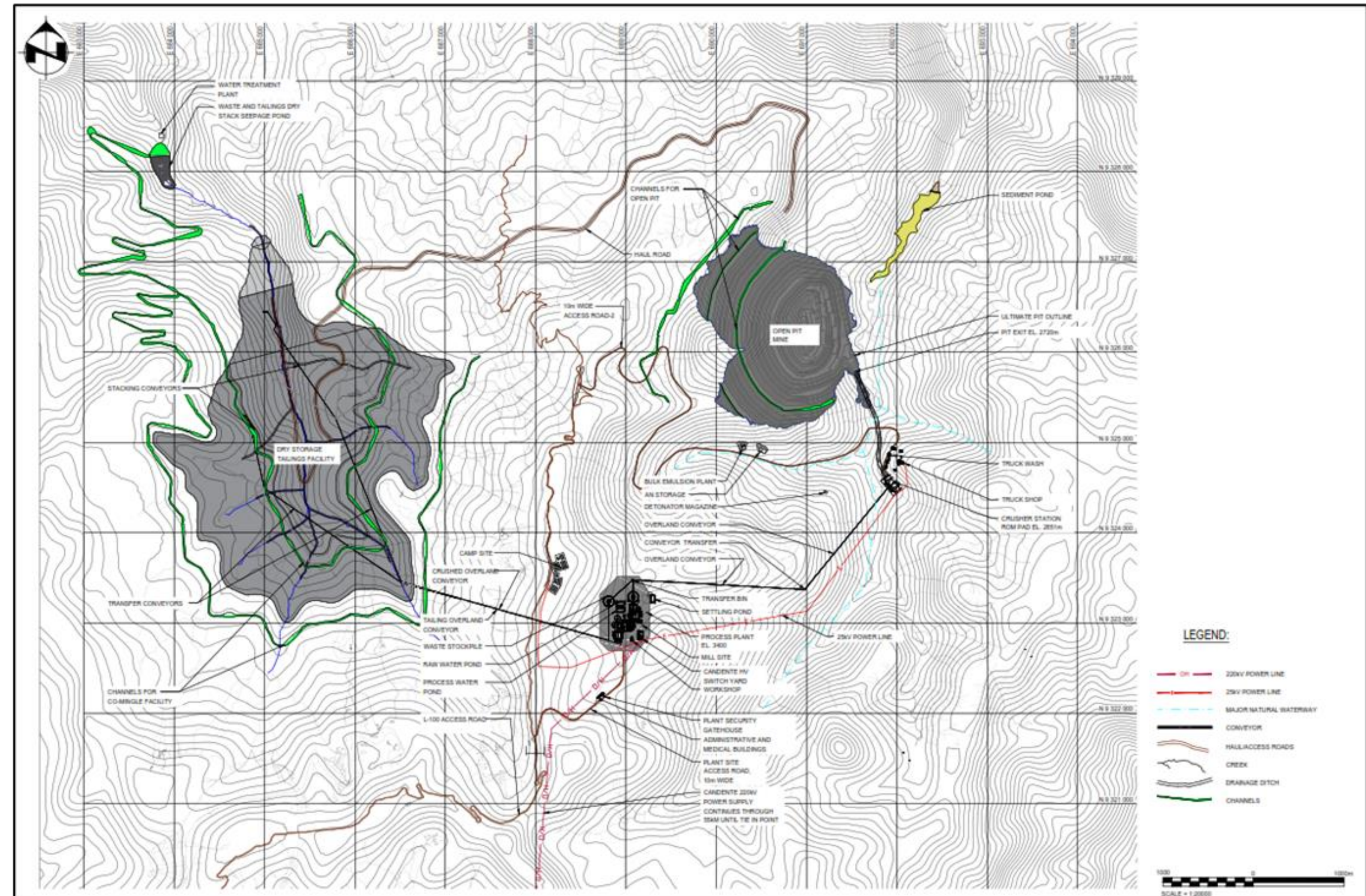
- Open pit mine with conventional crush, grind and flotation technology
- Lowest quartile C1 costs at US\$1.25/lb over life of mine
- Extremely low strip ratio of 0.66:1

Life of Mine Operating Costs Summary				
Area	Unit	US\$	Unit	US\$/lb Cu
<b>On-site Costs</b>				
Mining	\$/t processed	2.62	\$/lb Cu	0.38
Processing	\$/t processed	4.76	\$/lb Cu	0.69
Co-mingle Tailings	\$/t processed	0.12	\$/lb Cu	0.02
General & Administration	\$/t processed	0.70	\$/lb Cu	0.09
<b>Sub-total</b>	\$/t processed	<b>8.20</b>	\$/lb Cu	<b>1.18</b>
<b>Off-site Costs</b>				
Concentrate Transport	\$/t concentrate	127.47	\$/lb Cu	0.24
Smelting & Refining	\$/t concentrate	119.10	\$/lb Cu	0.22
<b>Sub-total</b>	\$/t concentrate	<b>246.57</b>	\$/lb Cu	<b>0.46</b>
<b>Total Cost</b>			\$/lb Cu	<b>1.64</b>
<b>Credits (Gold, Silver)</b>			\$/lb Cu	<b>(0.39)</b>
<b>Total Operating Cost</b>			\$/lb Cu	<b>1.25</b>



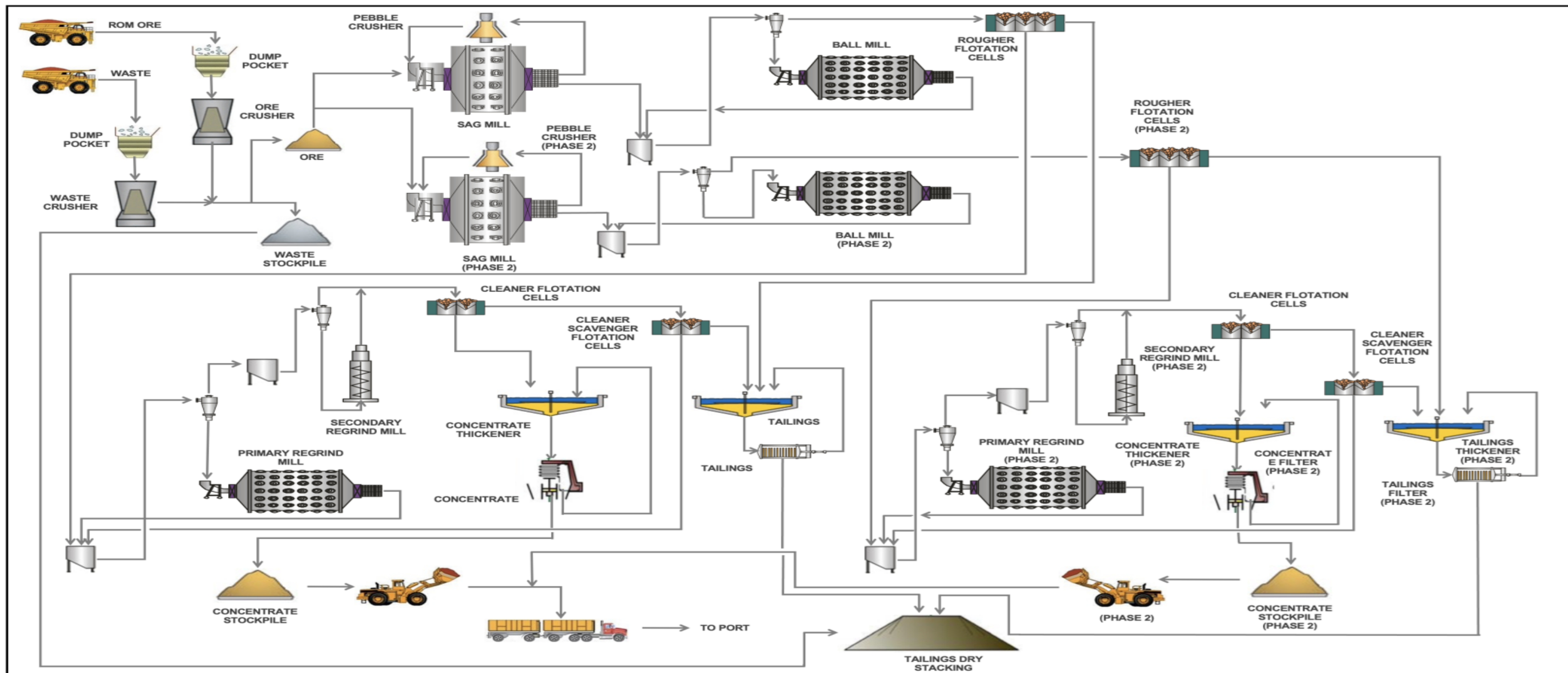
# SITE PLAN

- Mine Infrastructure Area (“MIA”) & Crusher /ROM pad are located near the pit to minimize hauling distance
- Electrical power will be supplied to the Project Site by a 220 kV overhead transmission line from the local utility substation at Carhuaquero, 55 km from the mine site
- Plant and camp sites selected on a natural elevated area close to existing roads and away from watersheds



# PROCESS FLOWSHEET

Phase 2 Expansion from 40,000 tpd to 80,000 tpd with added Parallel Line





## CONTACT INFO

For Further Information please contact:

Joanne C. Freeze, President, CEO  
[jfreeze@altacopper.com](mailto:jfreeze@altacopper.com)

or

Giulio T. Bonifacio, Executive Chair  
[gtbonifacio@altacopper.com](mailto:gtbonifacio@altacopper.com)  
604-318-6760

### Vancouver

Suite 801 - 1112 West Pender St  
Vancouver, BC Canada V6E 2S1

Telephone: 604-689-1957 / 1-877-689-1964

Email: [info@altacopper.com](mailto:info@altacopper.com)

TSX: ATCU | OTCQX: ATCUF | BVL: ATCU  
[www.altacopper.com](http://www.altacopper.com)