



MAKING THE GRADE HIGH GRADE GOLD DISCOVERIES IN QUEBEC

www.amexexploration.com

October 2023

TSXV: AMX
OTCQX: AMXEF
FRA: MX0

FORWARD-LOOKING STATEMENT

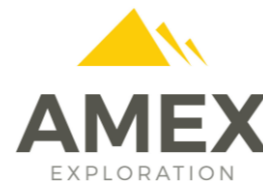
The purpose of this presentation is to provide general corporate information about Amex's activities current as of February 18, 2023. The information is given in summary form and does not intend to be complete; readers are urged to review the Company's full disclosure record available at www.sedar.com. Information provided in this presentation, is strictly for informational purposes and should not be considered as advice or a recommendation to investors or potential investors in relation to purchasing, holding or selling of Amex's securities.

FORWARD-LOOKING STATEMENT

This presentation contains "forward looking information" within the meaning of applicable Canadian securities laws, including statements regarding the future financial or operating performance of the Company, the planned exploration programs, continued positive drill results, the defining of new targets and mineralized zones, the prospective mineralization of the property, the preparation of a 43-101 compliant resources estimate on the property, the Company having the available funds and the general metals/gold market. Forward-looking information can also be identified by the words "may", "would", "could", "should", "will", "intend", "plan", "anticipate", "believe", "estimate", "expect" or similar expressions.

Investors are cautioned that forward-looking information is not based on historical facts but instead reflect Amex's management expectations concerning future results or events based on the opinions and assumptions of management considered reasonable at the date the statements are made. Although Amex believes that the expectations are reasonable, such information involves risks and uncertainties and undue reliance should not be placed on such information, as unknown and unpredictable factors could have material adverse effects on future results, performance, or achievements. Among the key factors that could cause actual results to differ materially from those projected in the forward-looking information are the following: general business, economic, competitive, geopolitical and social uncertainties; the actual results of current exploration activities; unforeseen expenses, the reinstatement of confinement and related government measures and guidelines in dealing with the Covid-19 pandemic, labour shortages, equipment shortages and interruptions in the supply chains, changes in general economic, business and political conditions, including changes in the financial markets; changes in applicable laws, environmental matters; and compliance with extensive government regulation; and other risks of the mining industry. Although the Company has attempted to identify important factors that could cause actual results to differ materially from those contained in forward-looking information, there may be other factors that cause results not to be as anticipated, estimated or intended. The Company does not undertake to update any forward-looking information, except in accordance with applicable securities laws.

In addition, readers are cautioned that exploration results that include drill results on wide spacings may not be indicative of the occurrence of a mineral deposit, such results do not provide assurance that further work will establish sufficient grade, continuity, metallurgical characteristics and economic potential to be classed as a category of mineral resource; and, the potential quantities and grades of drilling targets are conceptual in nature and, there has been insufficient exploration to define a mineral resource, and it is uncertain if further exploration will result in the targets being delineated as mineral resources.



QUALIFIED PERSON AND THIRD-PARTY DATA

QUALIFIED PERSON

Jérôme Augustin P.Geo. Ph.D., (OGQ 2134), Independent Qualified Person as defined by Canadian NI 43-101 standards, has reviewed and approved the geological information reported. The drilling campaign and the quality control program have been planned and supervised by Jérôme Augustin.

QUALITY ASSURANCE & QUALITY CONTROL

The quality assurance and quality control protocols include insertion of blank or standard samples every 10 samples on average, in addition to the regular insertion of blank, duplicate, and standard samples accredited by Laboratoire Expert or ALS Canada Ltd. during the analytical process.

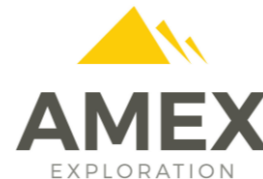
- For all analyses targeting gold mineralization, gold values are estimated by fire assay with finish by atomic absorption. Values over 3 ppm Au are reanalyzed by fire assay with finish by gravimetry by Laboratoire Expert Inc, Rouyn-Noranda. Samples containing visible gold mineralization are analyzed by metallic sieve. For additional quality assurance and quality control, all samples were crushed to 90% less than 2 mm prior to pulverization, in order to homogenize samples which may contain coarse gold.
- For analyses targeting VMS mineralization, zinc, copper and silver values are estimated by four acid digestion multi-elements Inductively Coupled Plasma - Atomic Emission Spectroscopy (ICP-AES), ME-ICP61 at ALS Canada Ltd. Zinc values over 1%, copper values over 1%, and silver values over 100 g/t are estimated by four acid digestion ICP-AES, OG62. Gold values are estimated by fire assay with atomic absorption finish.

THIRD-PARTY DATA

Certain information in this presentation regarding the presence of mineral deposits, the grades and the size of such deposits is based on information that has been obtained from publicly available information and industry reports. Such reports generally state that the information contained therein has been obtained from sources believed to be reliable, but the accuracy or completeness of such information is not guaranteed. We have not independently verified or cannot guarantee the accuracy or completeness of that information and investors should use caution in placing reliance on such information. Results from other projects are provided for information purposes only and are not indicative of the results that may be obtained from the Company's properties.

NON IFRS MEASUREMENTS

This presentation refers to "All in drilling Cost" and "Cash on hand". These financial performance measures have no standardized meaning under International Financial Reporting Standards ("IFRS") and are therefore unlikely to be comparable to similar measures presented by other issuers. Management uses these measures internally to evaluate the operating performance of Amex and assess performance trends. Management understands that certain investors, and others who follow Amex's performance, also assess performance in this way. This data is intended to provide additional information and should not be considered in isolation or as a substitute for measures of performance prepared in accordance with IFRS. For further detail, refer to Amex's financial statements and Management's Discussion and Analysis for the year ended September 30st, 2021 and three-month period ended.





Shares issued	103,243,001
Options	4,625,000
Fully diluted	107,868,001
Market capitalization	~\$113 Million

Analyst Coverage



Jeremy Hoy, Canaccord Genuity



Pierre Vaillancourt, Haywood Securities



Philip Ker, Laurentian Bank



Rabi Nizami, National Bank



Ryan Hanley, PI Financials



ECOLOGO

MINERAL EXPLORATION
 PROCESSES CERTIFIED FOR
 RESPONSIBLE ENVIRONMENTAL
 AND SOCIAL BEST PRACTICES.
 UL.COM/EL
 UL 2723



Victor Cantore

President and CEO, Director



Jacques Trottier

Executive Chairman of the Board



Pierre Carrier

Chief Operating Officer, Director



Patrick Musampa

Chief Financial Officer



Kelly Malcolm

Vice President Exploration



Luisa Moreno

Vice President Exploration



André Shareck

Director



Anik Gendron

Director



Yvon Gélinas

Director

NEWLY FORMED TECHNICAL ADVISORY TEAM



Stephen Coates

Mr. Coates is an established Mining Engineer with experience in mining operations, technical study delivery, due diligence, mine financing, business development, and strategic development. He is a professional engineer with a bachelor's degree in Mining Engineering from McGill University. He has previously worked for different operations including the Canadian Malartic Mine and the Renard Mine and consulting groups including G Mining Services. He has recently founded his independent consulting firm, Evomine Consulting, which offers mining engineering and management consulting services with in-depth insights on the Quebec mining industry



Jonathan Gagne

16 years in the mining industry. Mr. Gagne is a mining engineer with a background both in operation and project development. Since the beginning of his career, he participated in two projects construction: the Meadowbank mine and most recently the Greenstone mine. He was also responsible for the mining engineering department for the consulting company SGS Geostat, was the engineer in charge of supporting the open-pit operations for Glencore Zinc around the world and acted as General Manager of Sayona Quebec.



Pierre Luc Richard

President of PLR Resources Inc. With over 20 years in the mining industry, Mr. Richard has an excellent grasp of all aspects of exploration and mining operations, including project evaluation, development, and management. He has solid expertise in gold and a strong background in silver, base metals, lithium, iron ore and rare earth deposits. Specializing in mineral resource estimates and project evaluation for potential acquisitions and corporate guidance, Mr. Richard has contributed to more than 250 mandates for over 75 different companies during his consulting career. He has authored/coordinated more than 100 technical reports under National Instrument 43-101 and JORC. Before founding PLR Resources Inc., Mr. Richard has held positions such as Director Geology at InnovExplo and Subject Matter Expert for Mineral Resource Estimates at BBA.



Jacqueline Leroux

20+ years of experience in the mining industry, mostly in Northern Quebec. Mme. Leroux has held senior positions with various organizations including Environmental Manager for Goldcorp's Eleonore Project, Director of Sustainable Development for Mason Graphite, VP Environment for BlackRock Metals and VP Environment and Permitting for Troilus Gold. For those Projects, she oversaw permitting activities related to Exploration, Environment Evaluation Processes and Construction.

➤ The 100% owned Perron Project consists of 117 contiguous claims covering 4,518 hectares

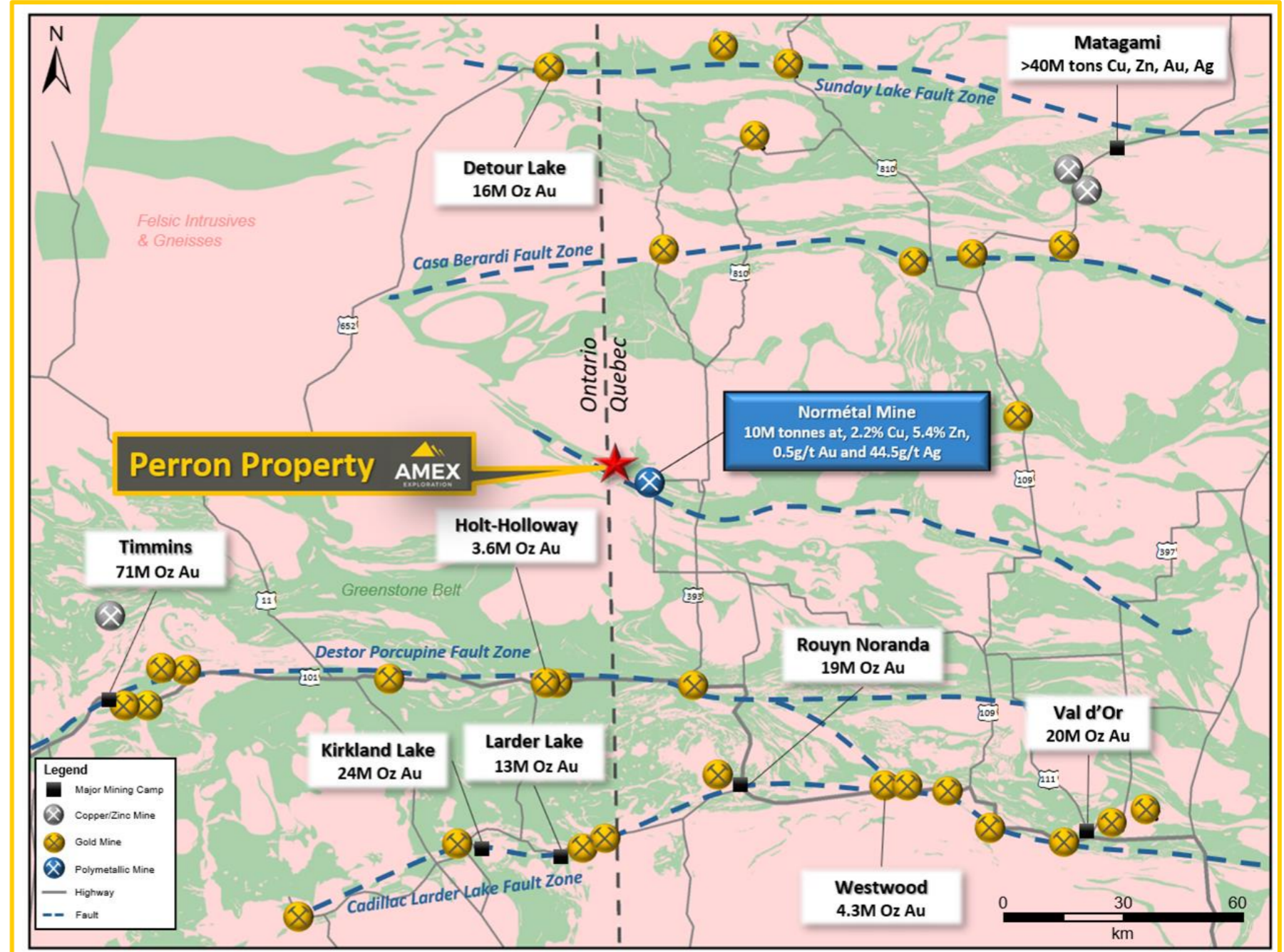
➤ The project is well-serviced by existing infrastructure, on a year-round road, 10 minutes from an airport and just outside the town of Normétal (~8 km).

➤ ~110 kilometres north of Rouyn-Noranda, Quebec



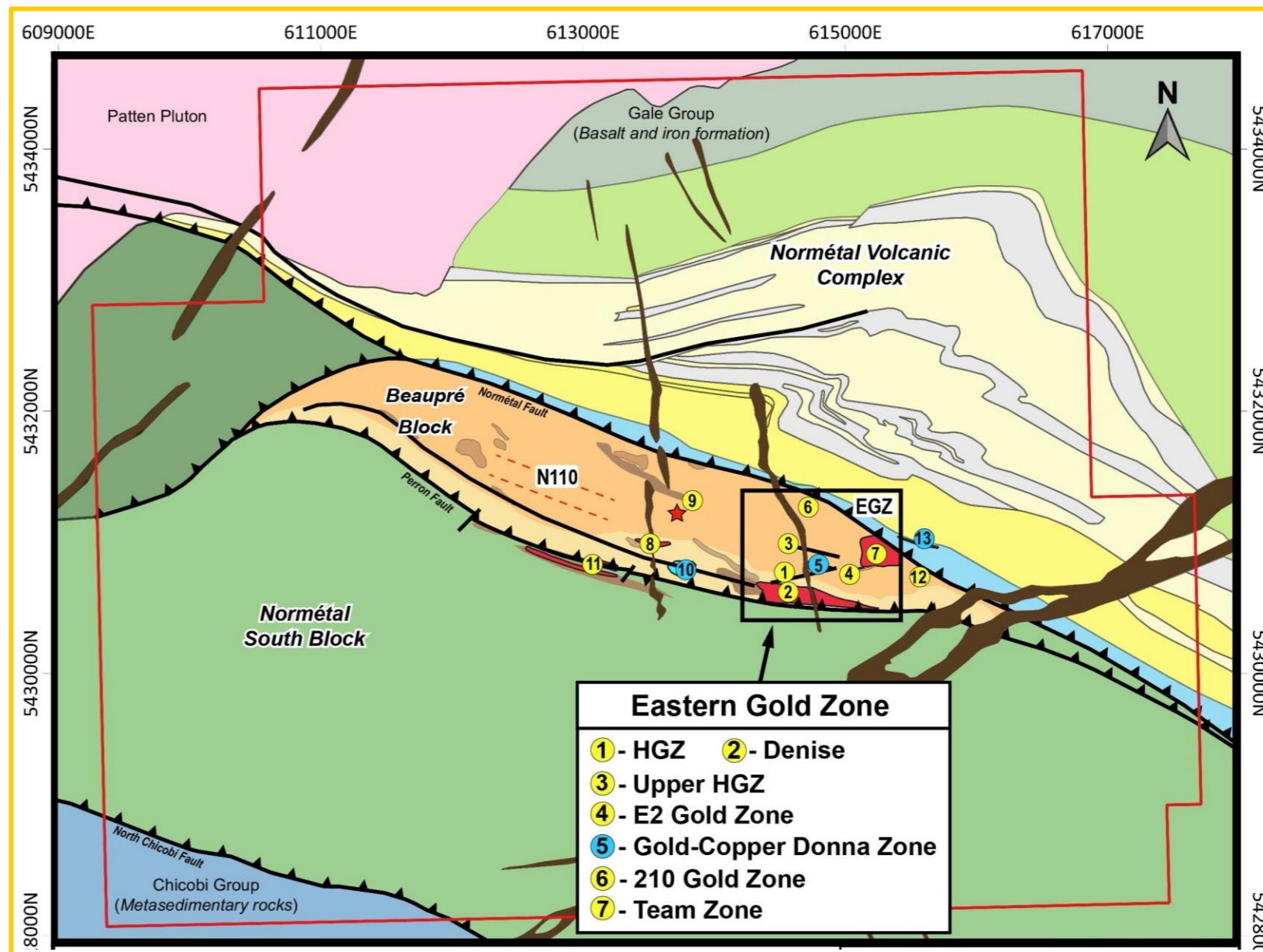
➤ During its operation, the Normétal mine produced 10 Mt at 2.25% copper, 5.4% zinc, 0.5 g/t Au and 44.5 g/t Ag

➤ The project is in close proximity to a number of major gold producers' milling operations.

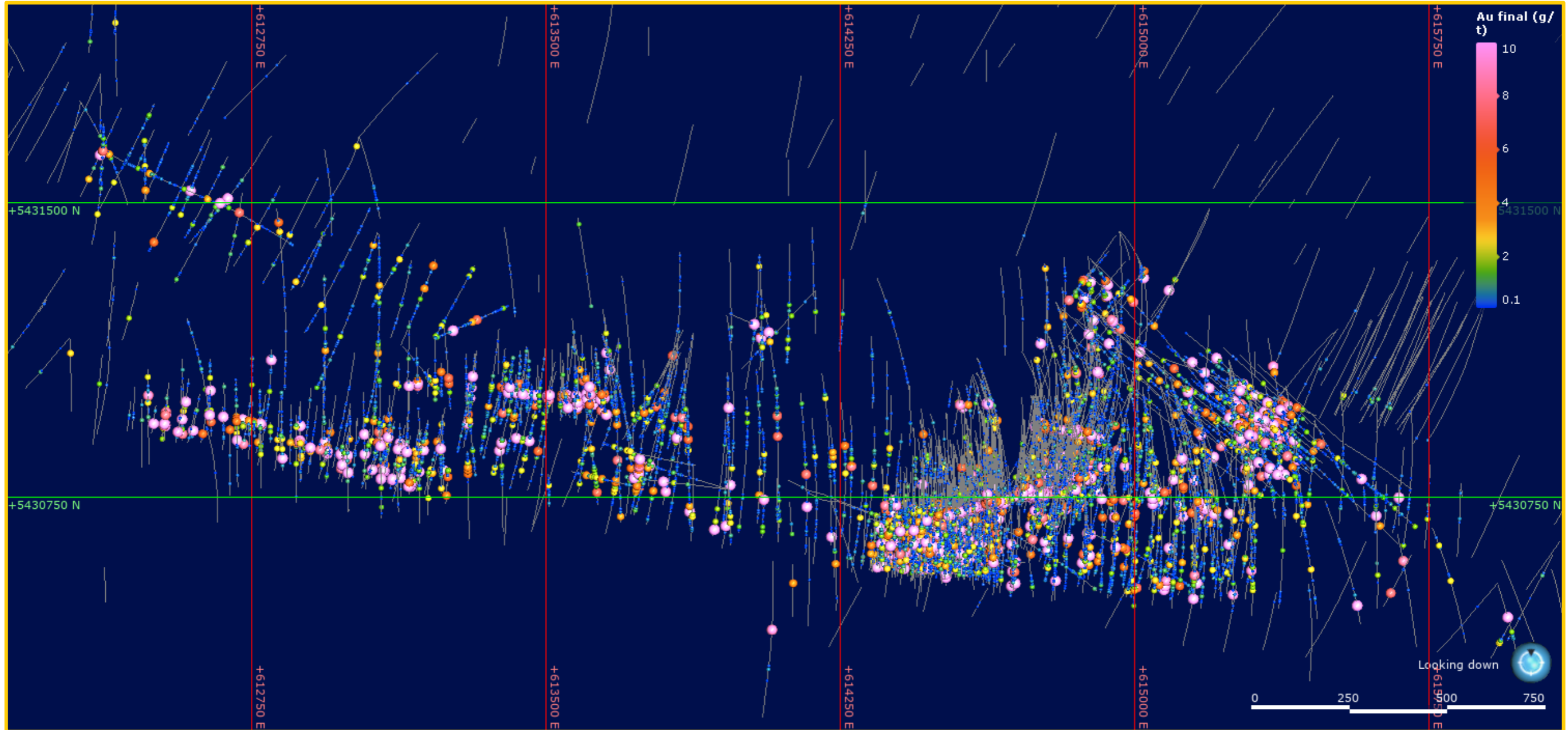


➤ A number of significant gold zones and VMS discoveries have been made at Perron that stretch over a 4 km strike

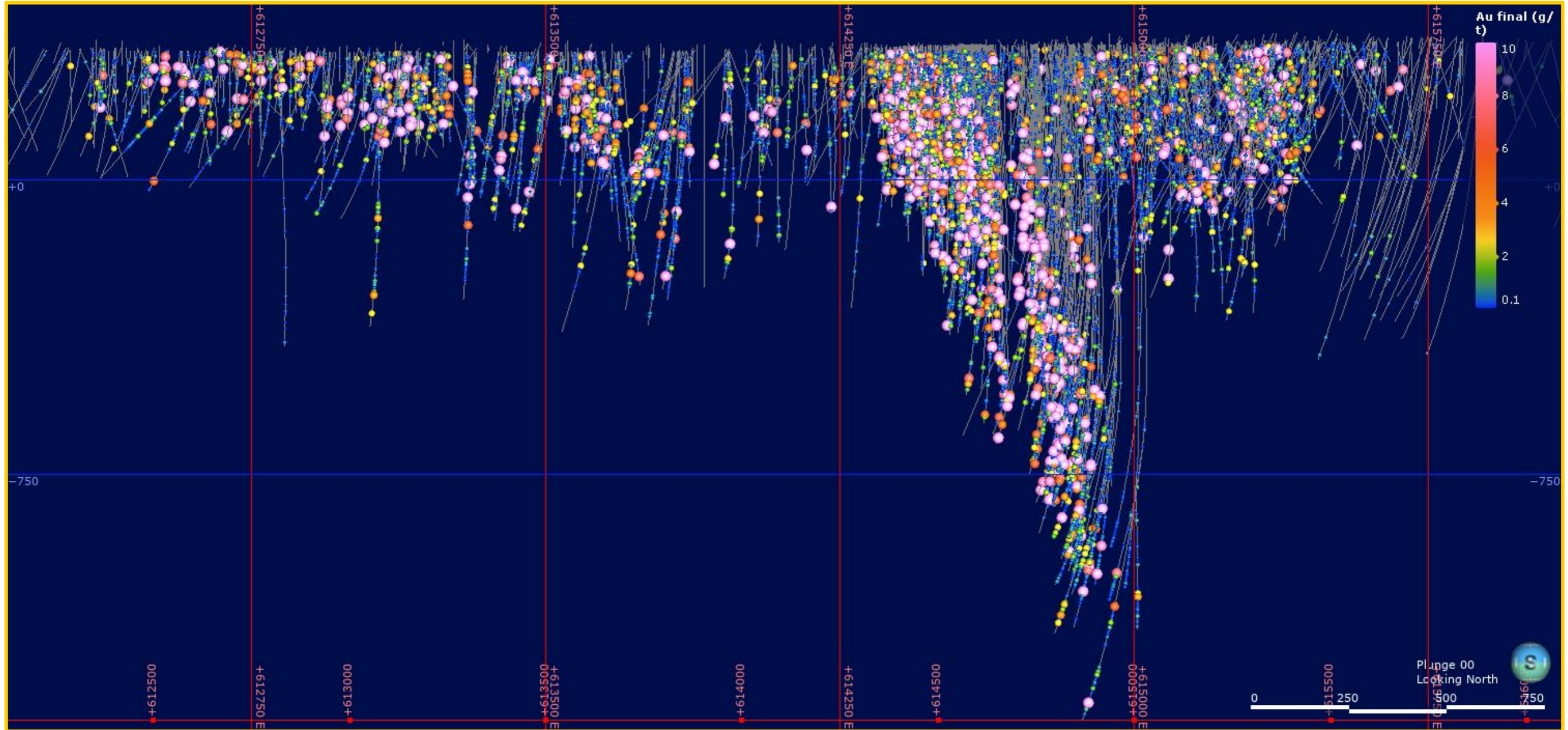
➤ The project hosts the potential for bulk-tonnage open pit and high-grade gold underground mining.



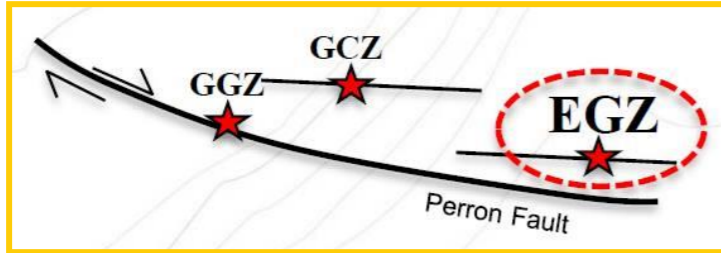
PERRON PROJECT – MINERALIZED SYSTEM – PLAN VIEW



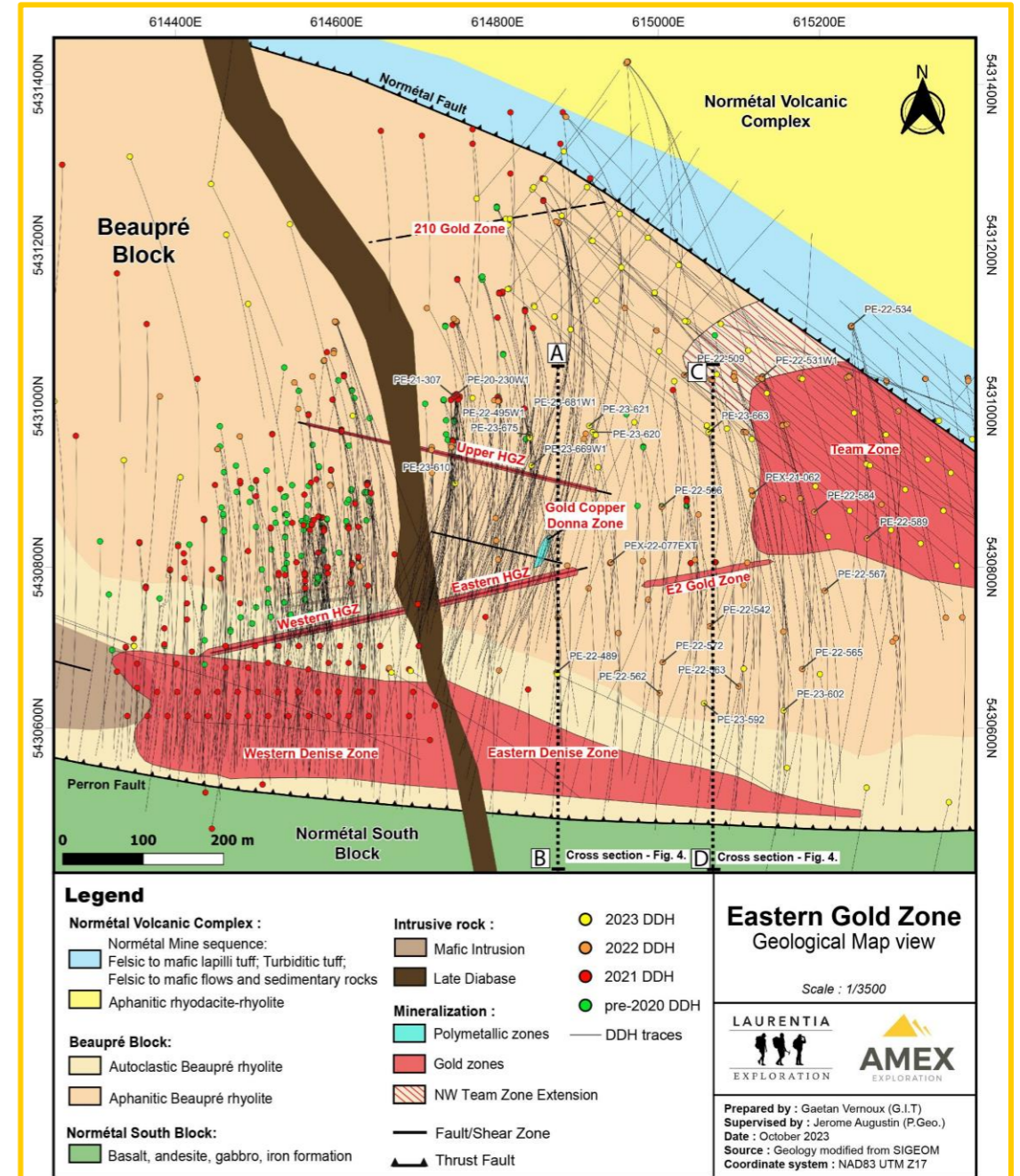
PERRON PROJECT – MINERALIZED SYSTEM - LONGITUDINAL



EASTERN GOLD ZONE (EGZ)

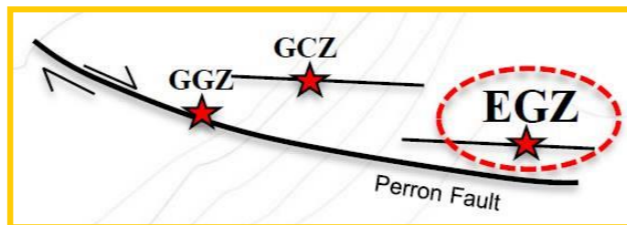


- Several parallel mineralized zones
- Denise Zone + High Grade Zone
- Open in all directions **ALONG STRIKE AND AT DEPTH**



EASTERN GOLD ZONE

High Grade Zone

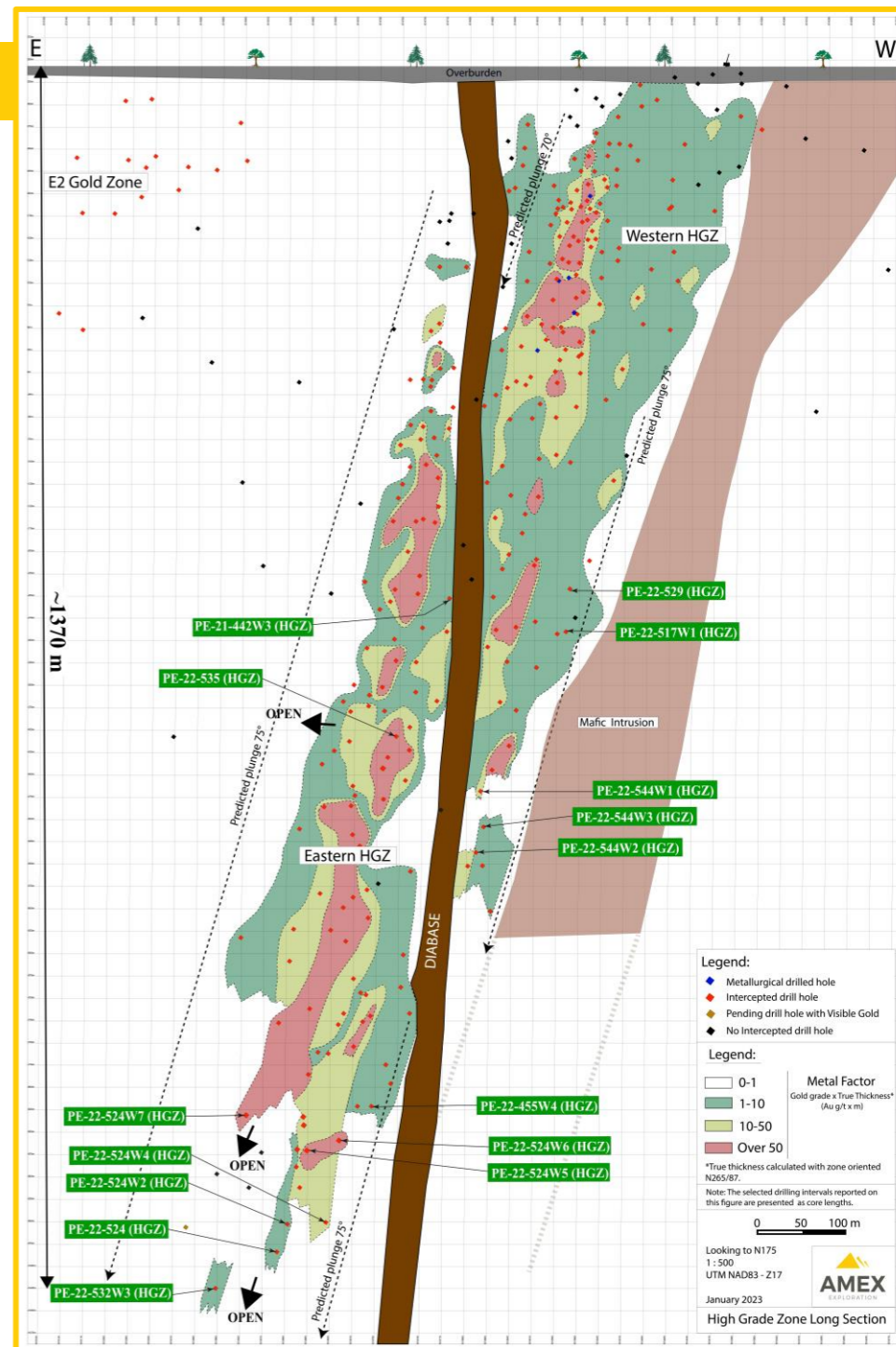


Highlights from the deeper (eastern) High Grade Zone include:

- 35.89 g/t Au over 6.75 m in hole PE-21-404W2
- 102.07 g/t Au over 6.10 m in hole PE-21-386W1
- 29.62 g/t Au over 8.40 m in hole PE-21-318
- 37.59 g/t Au over 6.20 m in hole PE-21-287
- 17.01 g/t Au over 7.40 m in hole PE-21-360
- 10.21 g/t Au over 7.40 m in hole PE-21-360W1
- 4.46 g/t Au over 15.60 m in hole PE-20-165W2
- 10.25 g/t Au over 6.10 m in hole PE-21-301W1

Highlights from the shallower (western) High Grade Zone include:

- 78.62 g/t Au over 5.90 m in hole PE-21-366W1
- 43.74 g/t Au over 6.80 m in hole PE-21-405
- 84.02 g/t Au over 5.60 m in hole PE-21-391
- 43.74 g/t Au over 6.90 m, in hole PE-21-409
- 76.61 g/t Au over 3.50 m in hole PE-21-383W1
- 36.02 g/t Au over 6.55 m in hole PE-21-392
- 21.75 g/t Au over 14.90 m in hole PE-21-367



Note: the HGZ drill results presented above represent core length. True width is estimated to be 55-80% of the reported core length. "Metal Factor" calculations in the figure, utilize estimated true width.

Denise Zone

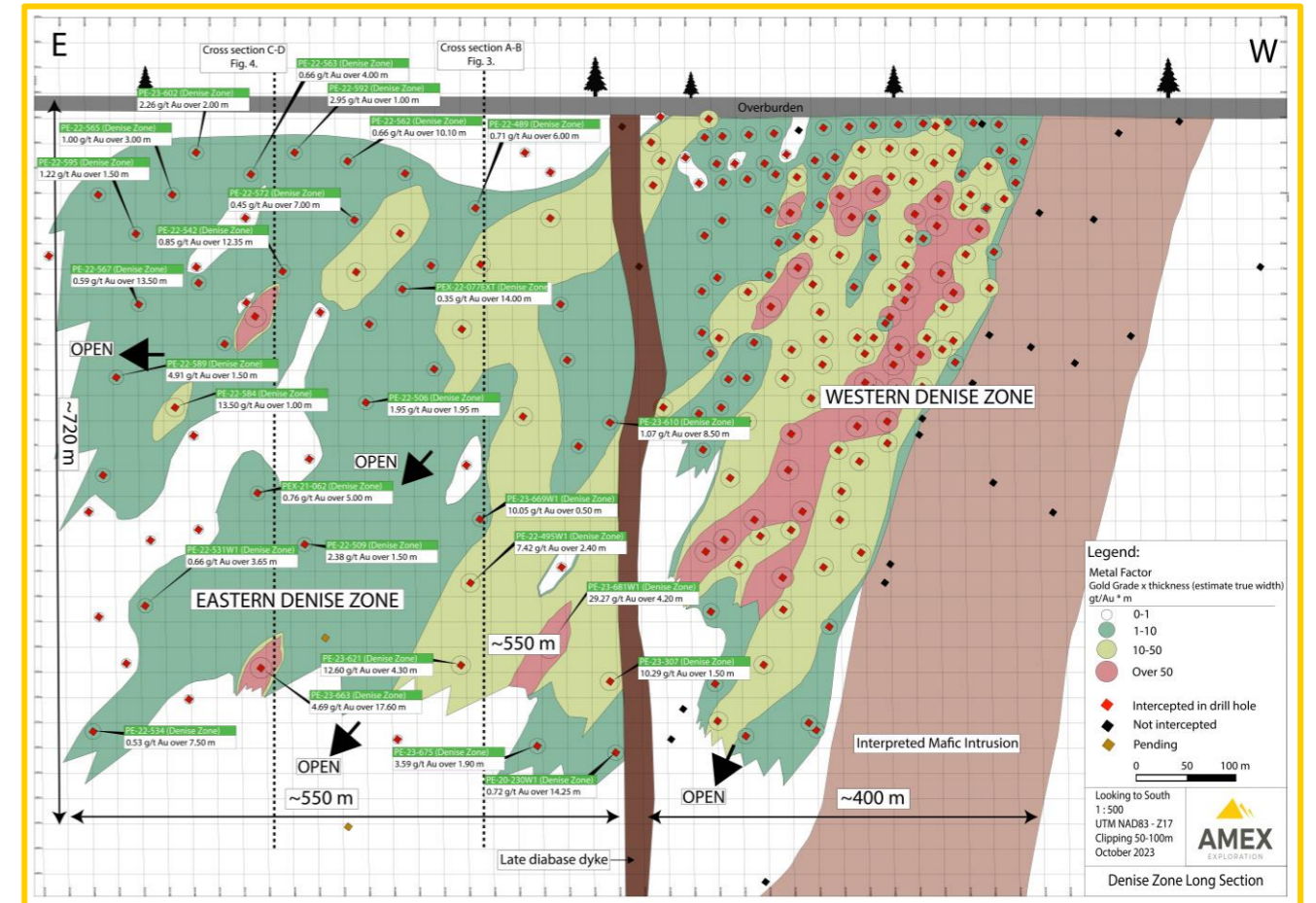
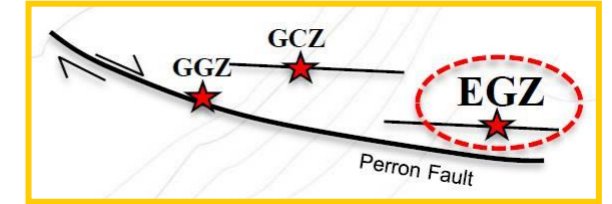
Intersected at least 750 vertical metres of gold mineralization starting from surface across a strike of more than 1 km.

Western Denise

- Hole PE-21-422 intersected 65.00 m of 1.89 g/t Au, including 0.50 m of 197.35 g/t Au
- Hole PE-21-392 intersected 58.50 m of 1.82 g/t Au, including 0.50 m of 177.65 g/t Au
- Hole PE-20-188 intersected 189.40 m of 1.07 g/t Au
- Hole PE-20-54EXT intersected 50.0 m of 2.12 g/t Au
- Hole PE-20-181 intersected 115.60 m of 1.39 g/t Au

Eastern Denise

- Hole PE-22-468 intersected 41.30 m of 0.88 g/t Au, including 14.90 m of 1.50 g/t Au
- Hole PE-22-510 intersected 30.90 m of 11.57 g/t Au, including 0.50 m of 55.08 g/t Au and 0.50 m of 601.47 g/t Au
- Located 50 m to 100 m south and parallel to HGZ



Note: the Denise drill results presented herein represent core length. True width is estimated to be 60-90% of the reported core length. "Metal Factor" calculations in the figure utilize estimated true width.

HIGH GRADE ZONE METALLURGY PROGRAM +99% RECOVERY OF GOLD AND SILVER

Multiple coarse grains of gold in PEM-20-001 to PEM-20-003

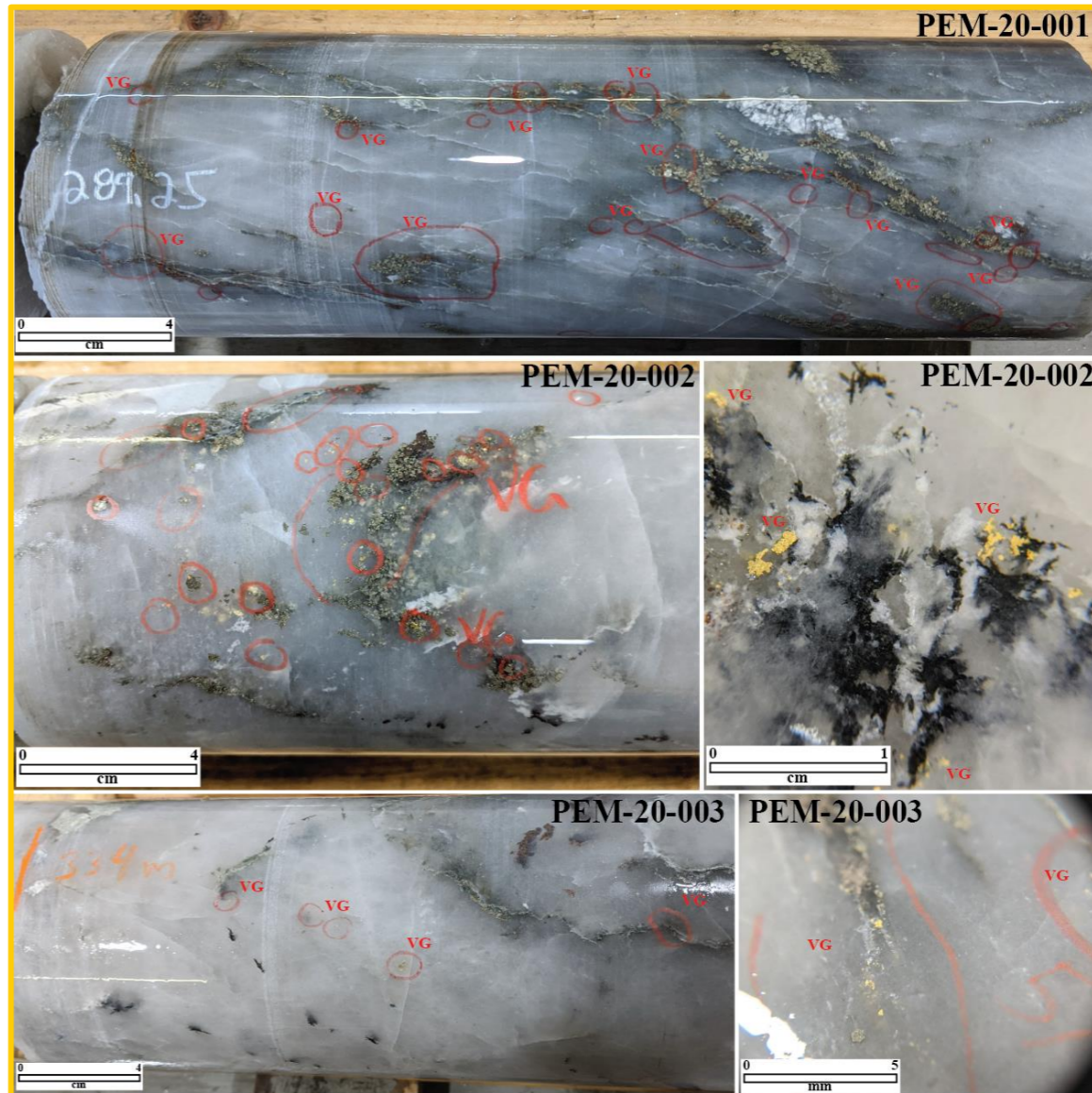
- Metallurgical holes head grade returned
 - 27.70 g/t Au over 11.80 m in PEM-20-001
 - 12.70 g/t Au over 16.60 m in PEM-20-002
 - 5.65 g/t Au over 10.60 m in PEM-20-003

➤ All three composite samples found to be amenable to gravity and cyanidation circuits, with overall gold recoveries greater than 99%.

➤ Of the three composites, gravity circuit returned over 75% of the recovered gold

➤ Metallurgical work was completed by SGS Canada Inc., a leader in metallurgical and analytical studies

➤ Currently conducting/planning additional metallurgical tests for Denise, Gratien, Grey Cat, and Team Zone ahead of planned economic studies



GRATIEN GOLD ZONE

➤ Reinterpretation of historical Perron Property drilling using the Eastern Gold Zone (EGZ) geological model

➤ High grade corridor identified in the Gratién Gold Zone (GGZ)

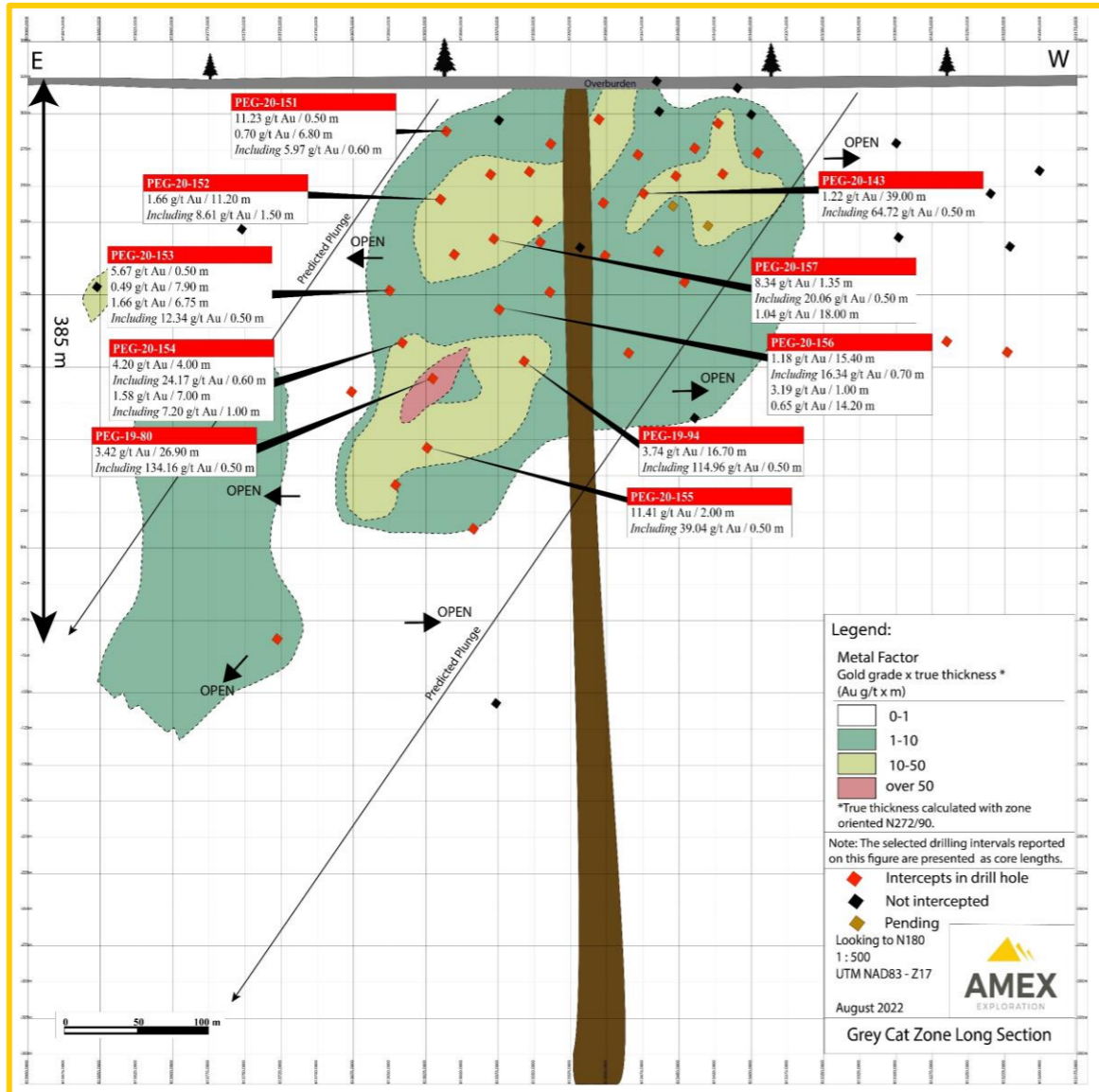
➤ 18,500 m of drilling Gratién and Gray Cat (GCZ) completed since July 2019



Drill Hole	From (m)	To (m)	Length (m)	Au (g/t)
PEG-19-65	109.40	110.85	1.45	67.52
incl.	109.40	110.20	0.80	4.13
incl.	110.20	110.85	0.65	145.53
PEG-19-66	221.80	226.05	4.25	16.77
incl.	221.80	222.90	1.10	10.94
incl.	222.90	224.00	1.10	11.45
incl.	225	225.50	0.50	12.04
incl.	225.50	226.05	0.55	73.05
PEG-19-68	189.60	194.50	4.9	27.46
incl.	189.60	190.40	0.80	17.52
incl.	191.00	191.60	0.60	33.19
incl.	191.60	192.30	0.70	17.75
incl.	192.30	193.00	0.70	79.44
incl.	193.00	193.80	0.80	17.86
incl.	193.80	194.50	0.70	25.62
PEG-19-88	57.5	58.0	0.50	62.81
PEG-19-89	193.20	207.80	14.60	16.48
Including	202.85	207.80	4.95	47.69
Including	205.10	206.30	1.20	191.48

Note: The Gratién drill results presented above represent core length. True width is estimated to be 65-90% of the reported core length.

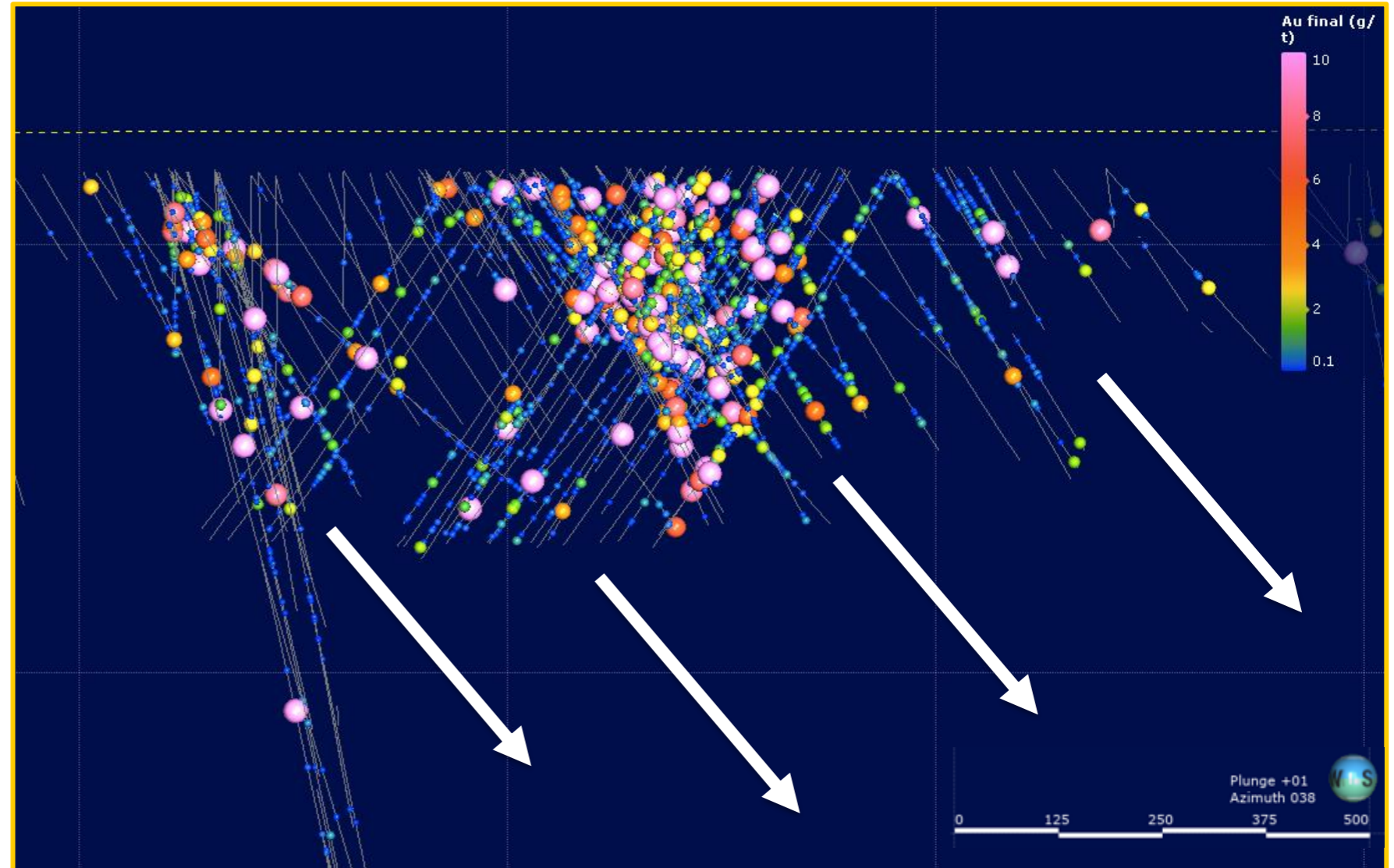
GREY CAT GOLD ZONE 2019 DRILLING



Hole ID	From (m)	To (m)	Length (m)	Au (g/t)
PEG-19-78	94.00	128.00	34.00	1.89
Including	94.00	101.50	7.50	5.07
Including	117.10	128.00	10.90	2.25
PEG-19-80	243.10	270.00	26.90	3.42
Including	243.10	246.75	3.65	4.70
Including	268.00	270.00	2.00	35.98
PEG-19-82	20.00	48.00	28.00	1.26
Including	22.10	23.20	1.10	17.91
Including	45.20	45.70	0.50	8.27
PEG-19-94	238.00	244.50	6.50	9.39
Including	240.70	241.20	0.50	114.96
PEG-19-103	86.90	89.60	2.70	23.95
Including	87.60	88.30	0.70	91.06

Note: the Grey Cat drill results presented herein represent core length. True width is estimated to be 50-70% of the reported core length.

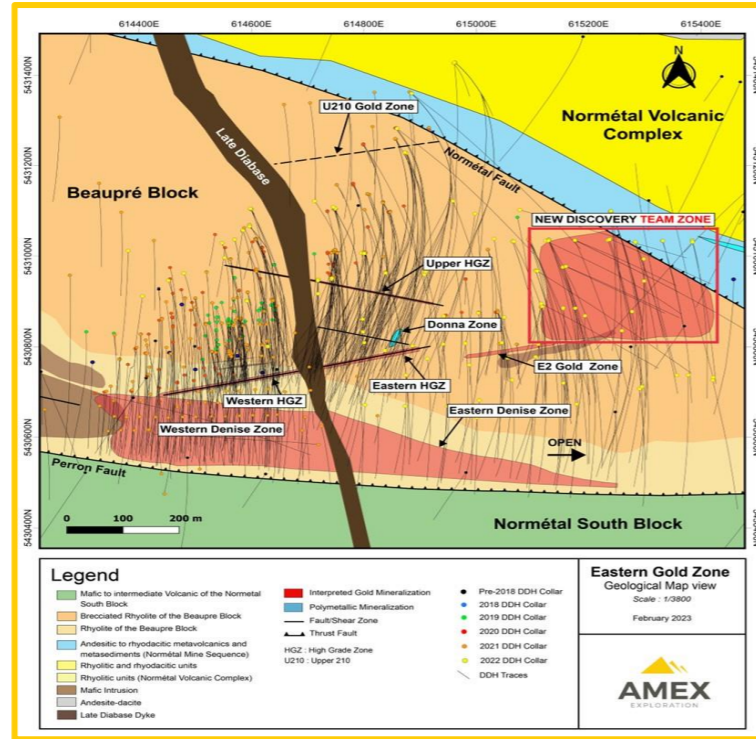
Hole ID	From (m)	To (m)	Core Length (m)	Au g/t	Vertical depth (m)
PE-22-554*	149.5	313	163.5	1.08	~110 to 230
Including	298.5	307	8.5	7.9	
PE-22-548*	214	228.5	14.5	6.75	~180 to 250
Including	221	222.5	1.5	26.34	
Including	224	225.5	1.5	32.6	
And	276	293	17	1.74	
PE-22-556*	26.25	28.5	2.25	19.04	~20
PE-22-561*	116	140	24	1.78	~100-125
Including	129.5	140	10.5	3.31	
PE-22-545*	177.5	184.5	7	2.09	~150 to 295
And	213.5	225.3	11.8	1.07	
And	249	249.5	0.5	22.1	
And	365.6	367	1.4	68.66	
PE-22-580	281.1	285	3.9	9.21	~210 to 305
And	322.7	337.1	14.4	0.84	
Including	326.7	330.6	3.9	2.03	
And	411.4	412.4	1	72.06	
Including	411.4	411.9	0.5	141.82	
PE-22-570	144.5	155	10.5	2.71	~100 to 140
Including	153.5	154	0.5	38.97	
PE-22-568	152.7	160.9	8.2	4.73	~115 to 220
Including	156.5	157.5	1	27.07	



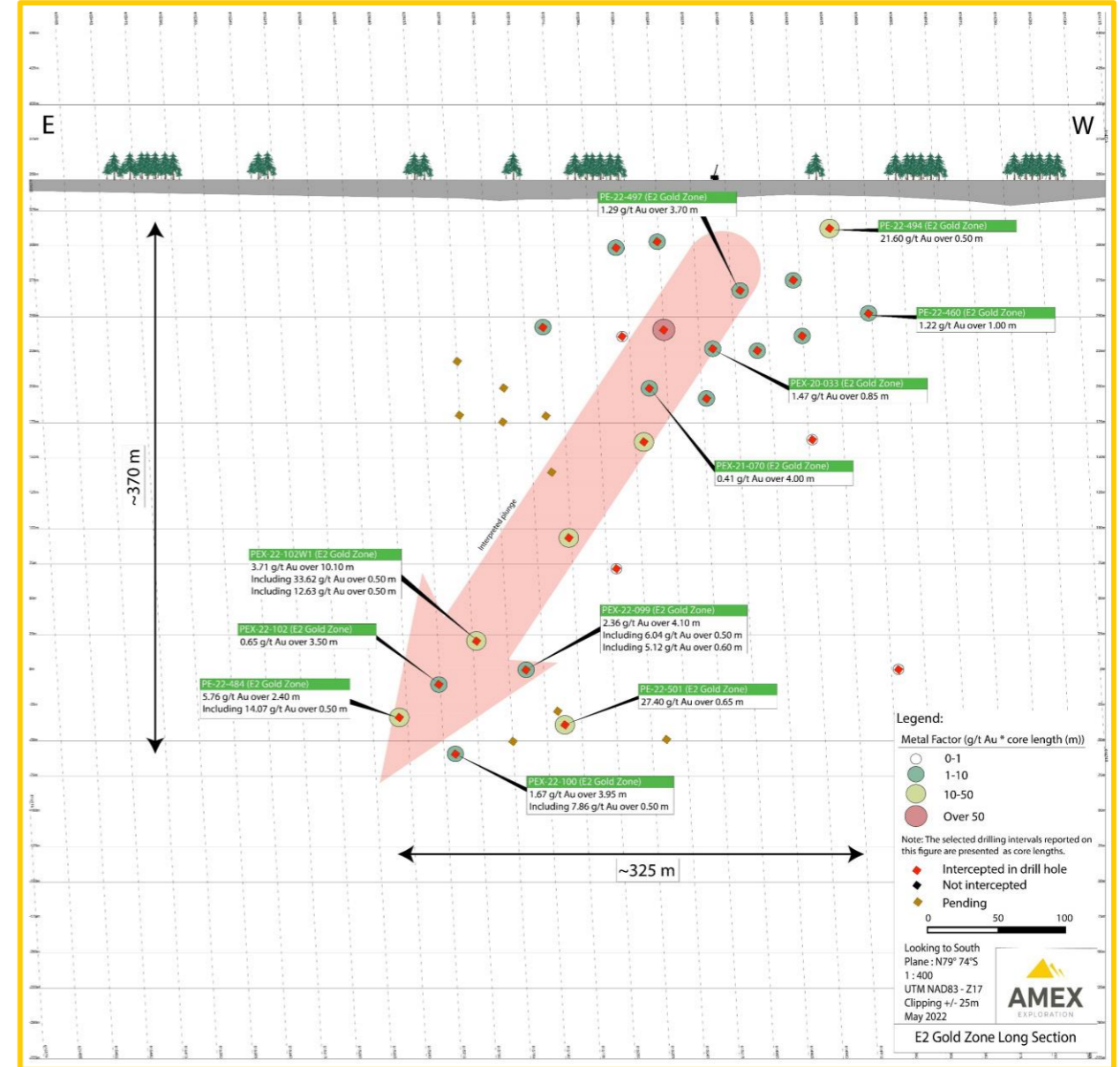
➤ Team Zone consists of a large-scale mineralized system containing sub-parallel higher-grade shoots dipping to the East. Mineralization occurs as stockwork veins/veinlets.

Note: The drill intervals above are presented in core lengths, as the estimated true width is currently unknown.

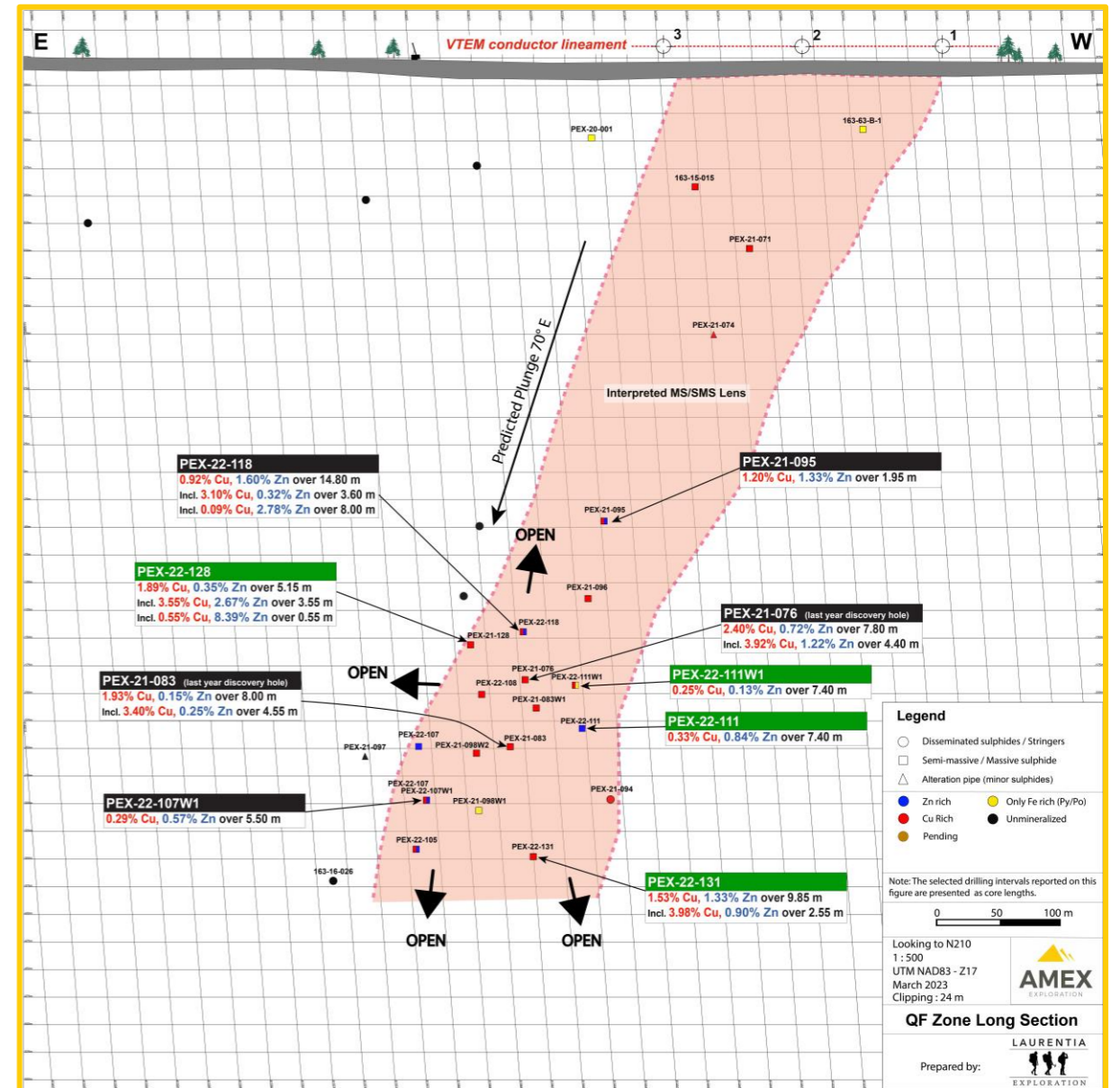
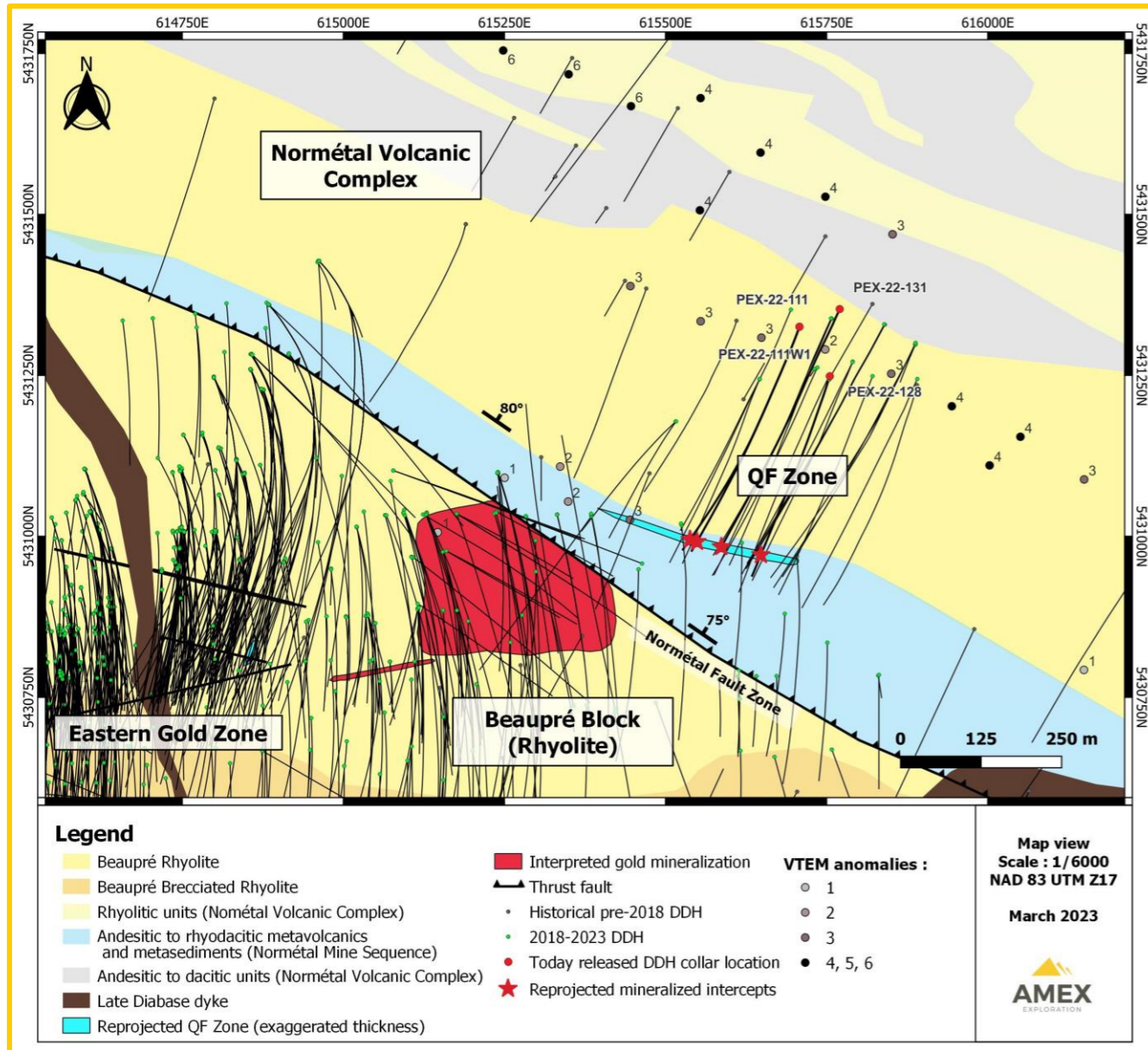
E2 Gold Zone



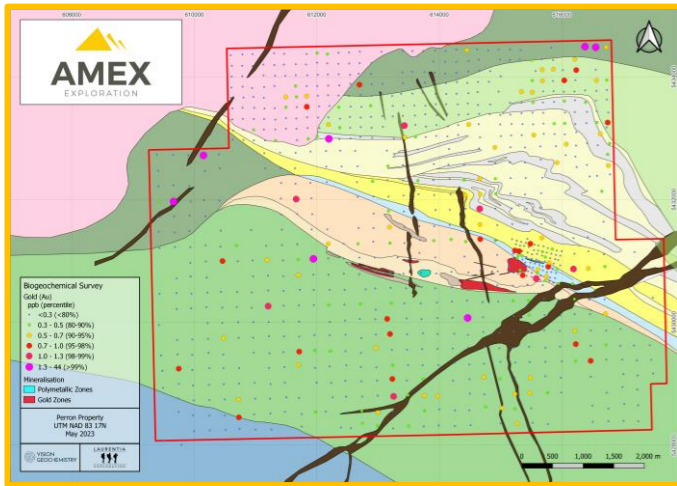
Hole ID	From (m)	To (m)	Length (m)	Au (g/t)	Cu (%)	Zone	Vertical depth
PE-20-210	108.80	112.70	3.90	58.25		210 Zone	110m
Including	111.20	111.70	0.50	412.30			
PE-21-041	288.60	293.70	5.10	31.87		Alizee	200m
PEX-20-034	150.00	163.85	13.85	5.58		E2	135m
PEX-21-066	226.25	234.70	8.45	4.54			200m
PE-21-318W1	1123.00	1179.00	56.00	1.37	0.25	Donna	950m
Including	1141.50	1156.20	14.70	3.59	0.72		
PEX-20-003	76.00	109.80	33.80	0.75		E3	75m
PE-20-190	625.00	642.20	17.20	1.01		UHGZ	580m



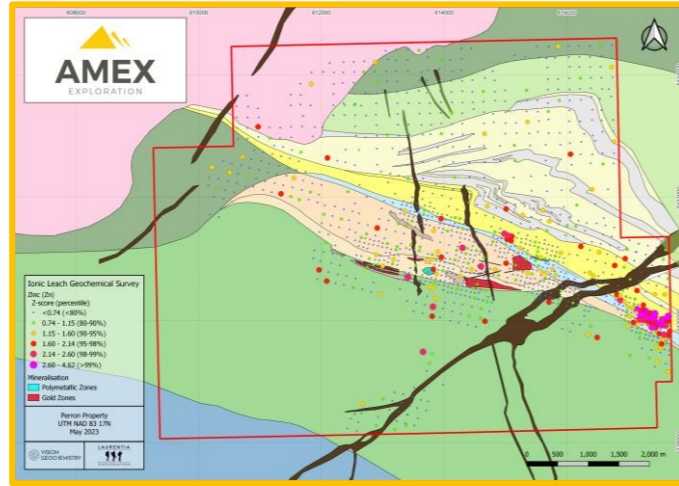
Note: The drill intervals above are presented in core lengths, as the estimated true width is currently unknown.



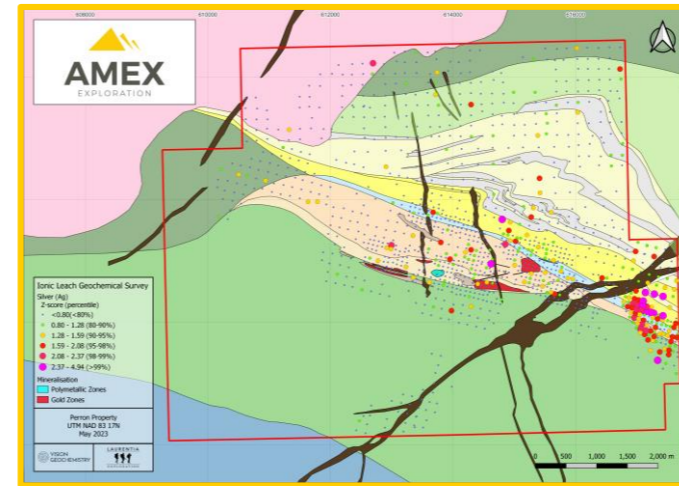
Note: The drill intervals for the QF zone are presented in core lengths.



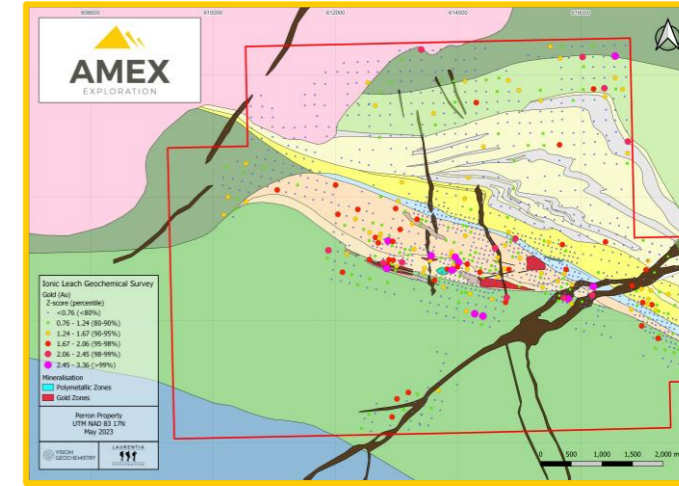
Au - Bark



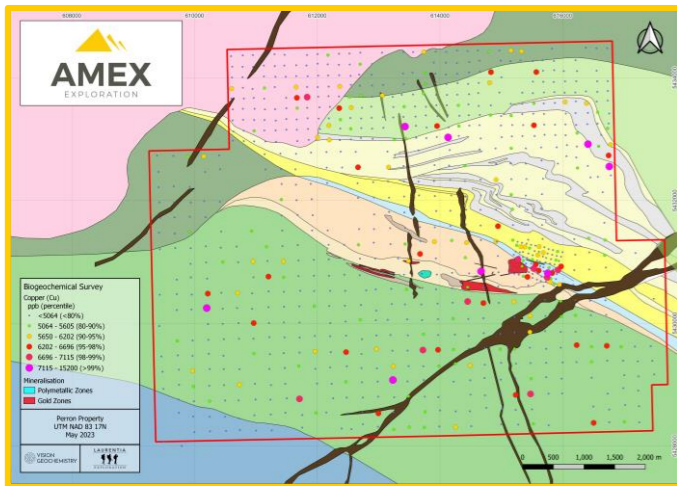
Zn - Soil



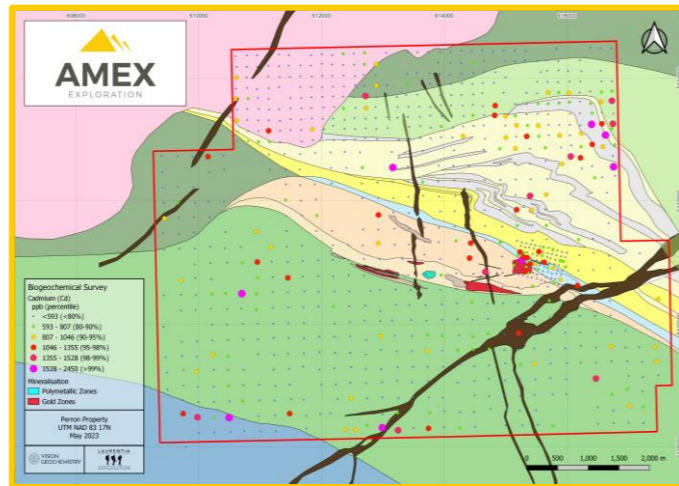
Ag - Soil



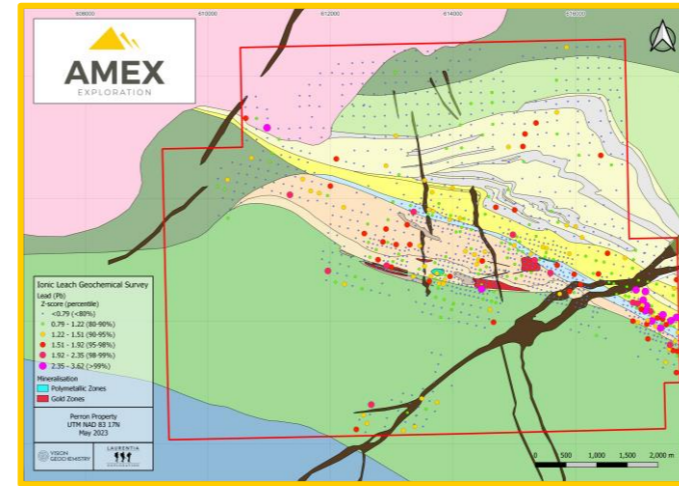
Au - Soil



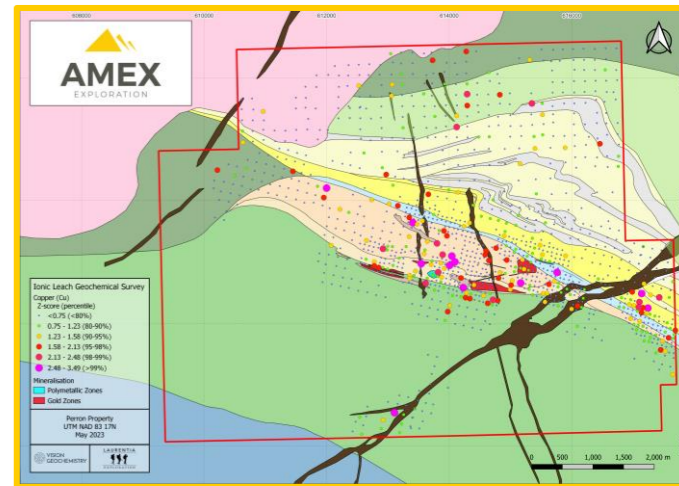
Cu - Bark



Cd - Bark



Pb - Soil



Cu - Soil₂₁



The Perron gold property is fully road accessible year-round by government-maintained highway and forestry roads and is proximal to power and water services



CORPORATE OBJECTIVES

-
8-MONTH
OUTLOOK

-
ALL FULLY
FUNDED

TSXV: AMX

- Define Team Zone from surface to ~450 m at 50 m centres
- Expand Gratiem Gold Zone to West and Depth
- VMS Drilling on new eastern target and QF Zone
- Continue drilling NI 10 gold corridor for HGZ-type shoots
- Expand on Denise Zone & Infill as required
- Infill HGZ as required
- Continued surface geochemistry program
- Resource Estimate – Targeting Q1 2024
- Engineering, Economic, & Environmental Studies
- Expand Executive Team With Development/Mining Focus