



WHITE GOLD CORP

Corporate Overview – PMSBC

TSX-V: WGO | OTCQX: WHGOF | FRA: 29W

Leading Yukon's Modern Gold Rush

PROPERTY PORTFOLIO



Largest Landholder in the District

Claims: >17,500
 Properties: 30
 Area: >350,000 Hectares
 (>865,000 Acres)

40% Of The District

Extensive Exploration Pipeline

Early-Stage Properties

Bonanza
 Nolan
 IND
 Dime
 Hunker
 Hayes

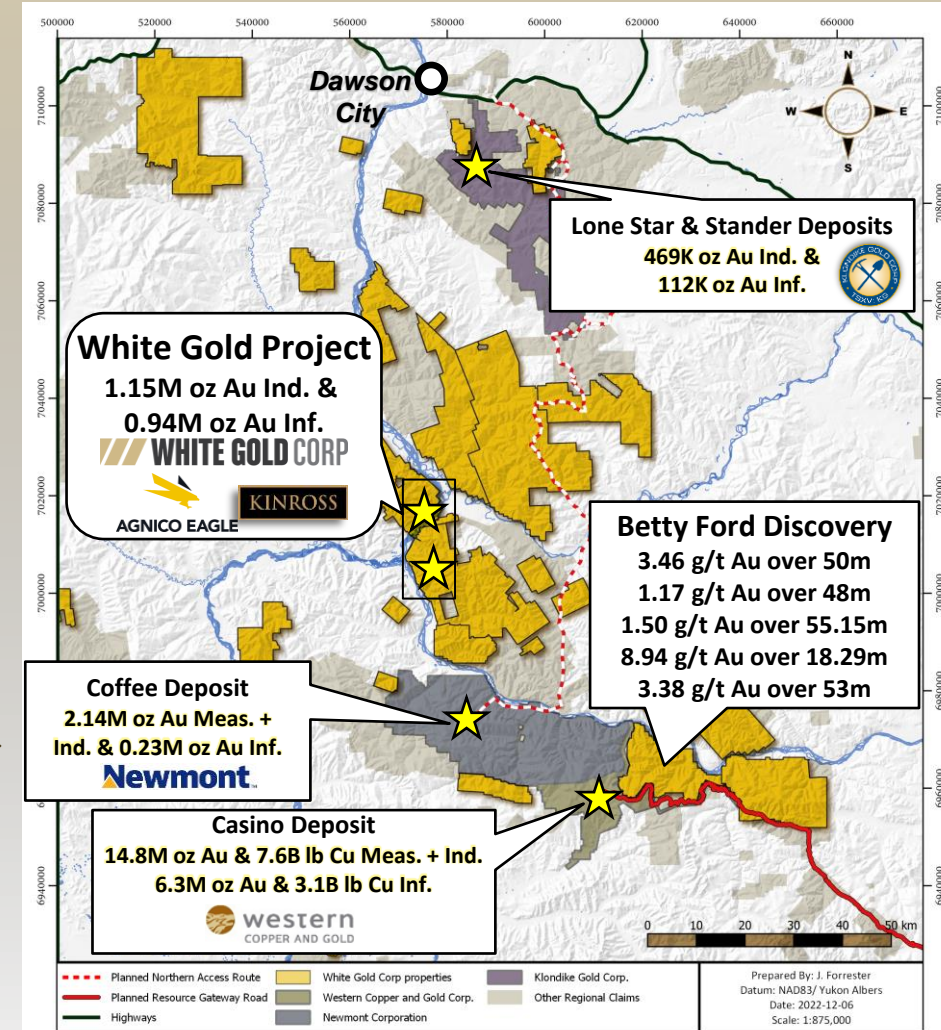
20+ Additional Properties

Discovery-Stage Projects

Betty
 Ulli's Ridge
 Vertigo
 JPR Property
 (Multiple)

Advanced-Stage Projects

Golden Saddle
 Arc
 VG Zone
 Ryan's Surprise

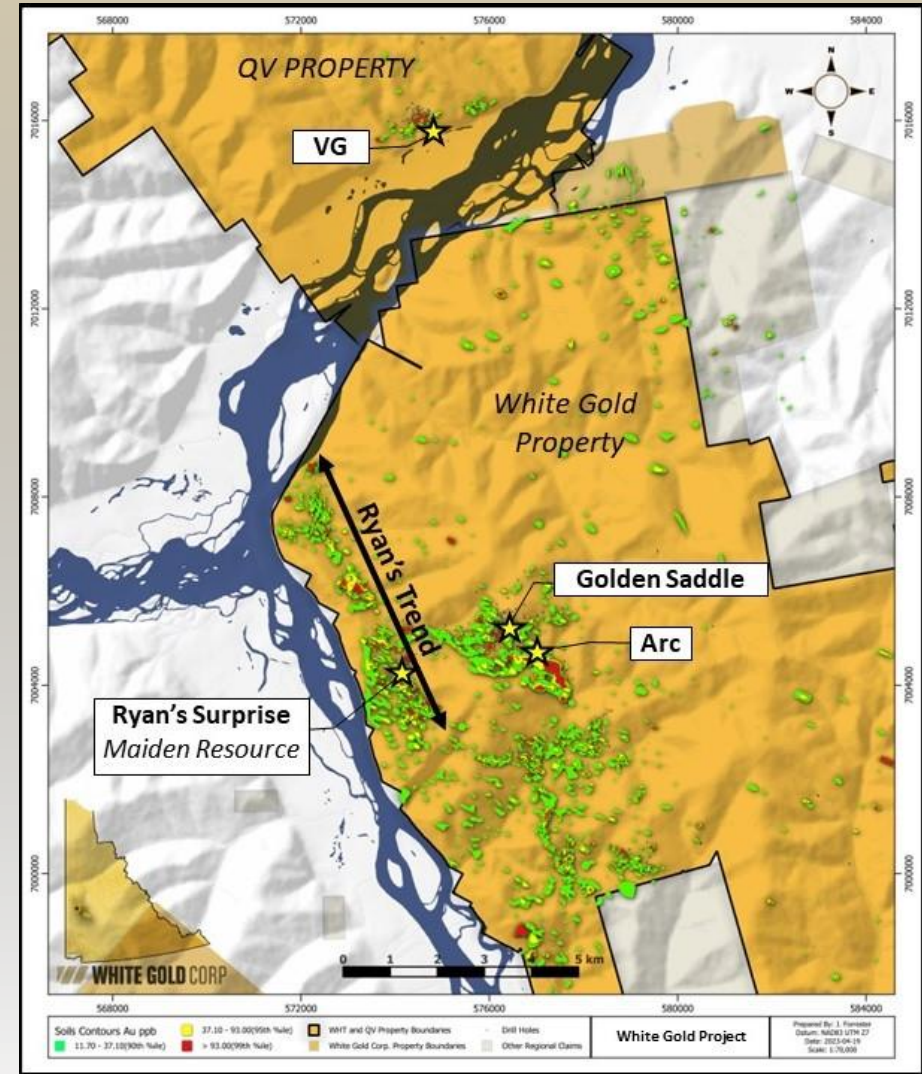


MINERAL RESOURCES

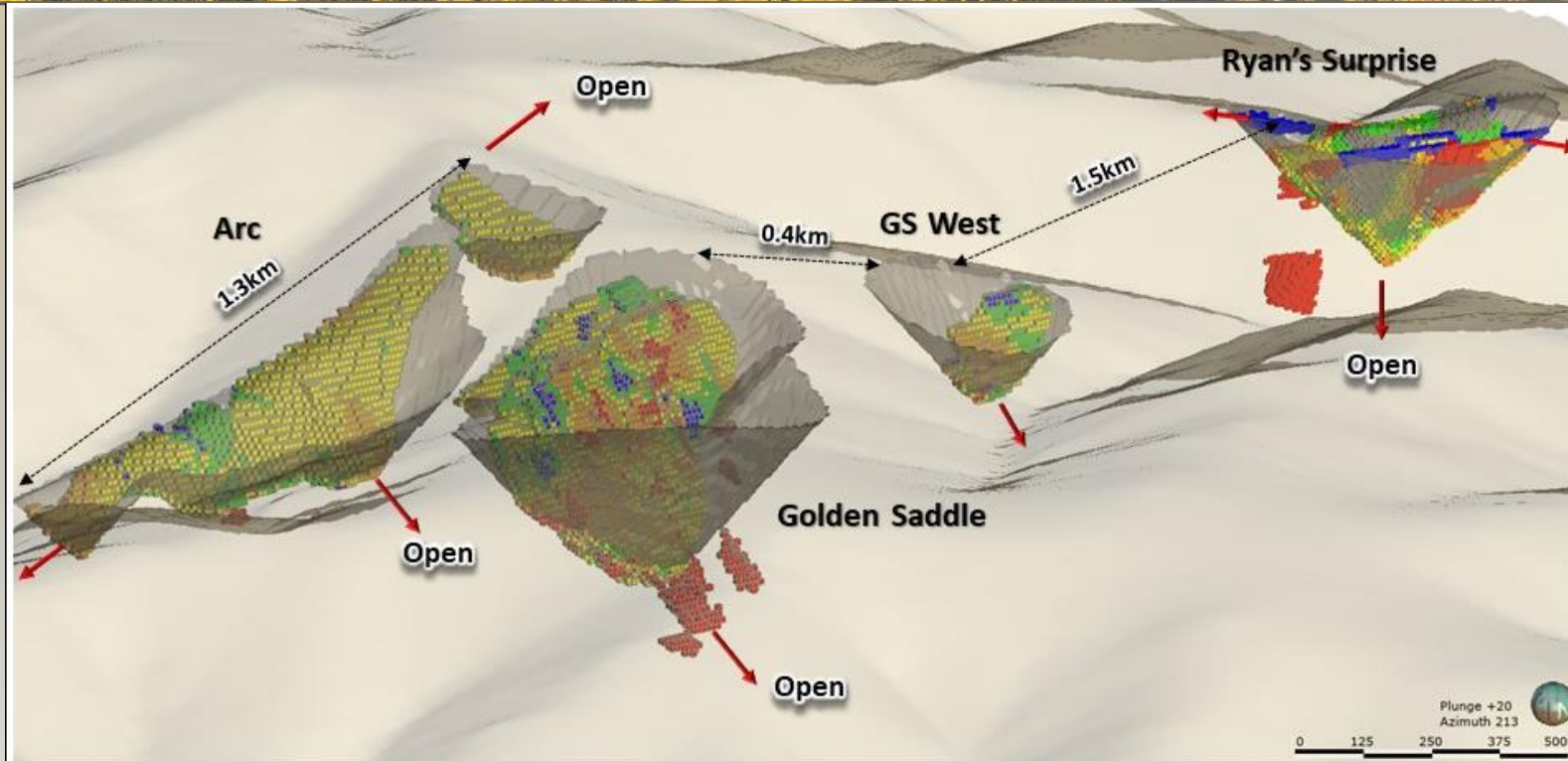


White Gold Project 2023 MRE

Deposit	Indicated Resource			Inferred Resource		
	Tonnage (000's)	Grade (g/t)	Contained Gold (ounces)	Tonnage (000's)	Grade (g/t)	Contained Gold (ounces)
GS - Open Pit	15,241	2.25	1,103,900	3,569	1.39	159,700
GS - Underground	224	3.86	27,800	535	3.68	63,200
Arc - Near Surface	642	1.03	21,200	5,426	1.15	201,000
Arc - Underground	--	--	--	36	3.23	3,700
RS - Near Surface	--	--	--	3,373	1.89	205,300
RS - Underground	--	--	--	214	3.25	22,400
VG - Near Surface	--	--	--	5,836	1.53	287,100
TOTAL	16,107	2.23	1,152,900	18,989	1.54	942,400

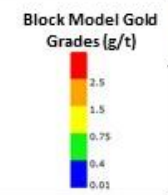


WHITE GOLD PROJECT – DEPOSITS



Legend

- 2023 Pit shell
- Topography
- Gold Estimated and Resource Constrained Blocks



WHITE GOLD CORP

Figure 2: White Gold Property
Arc, Golden Saddle, Ryan's Surprise Deposits
(looking SSW)

2023 EXPLORATION PROGRAM



BETTY PROPERTY

Diamond Drilling – Betty Ford (1165m)

Extension drilling following up on 3.46 g/t Au over 50m in 2021
& 8.96 g/t Au over 18.29m in 2022

JP ROSS PROPERTY

Diamond Drilling – Vertigo Target (1022m)

New structural interpretation includes multiple untested mineralized vein sets

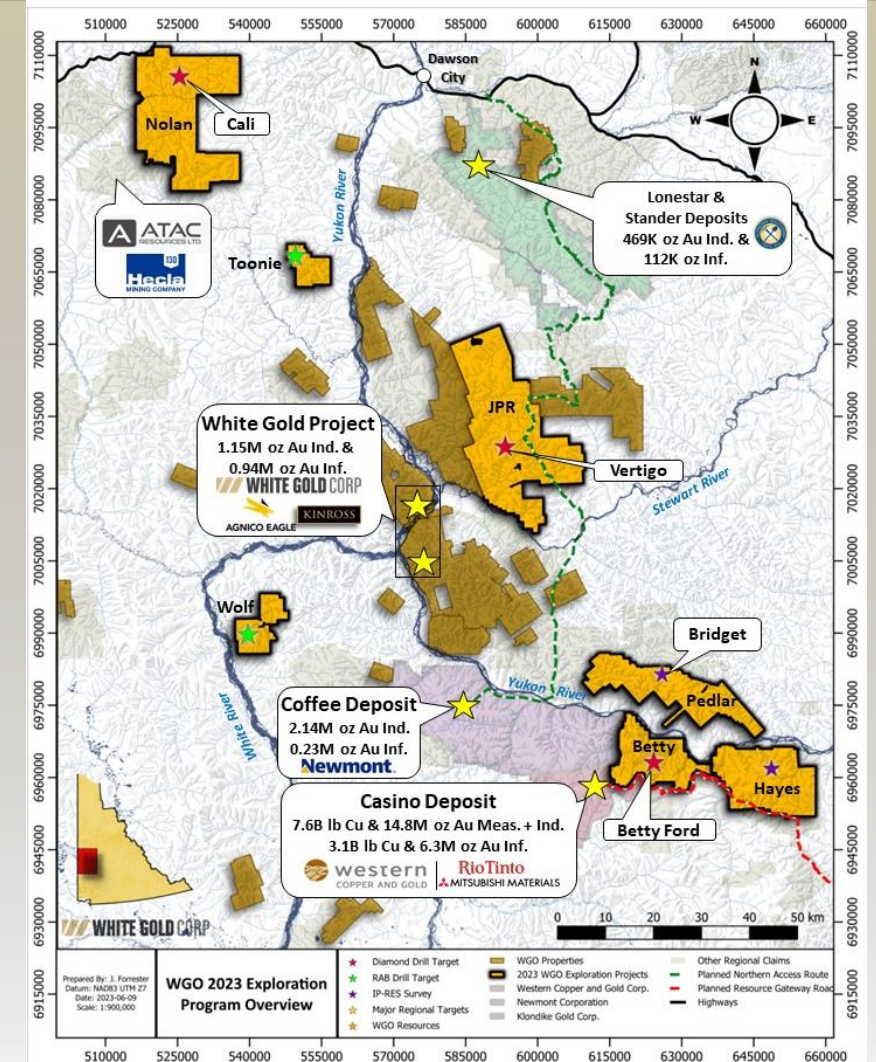
Nolan Property

Maiden Diamond Drilling – Cali Target (972m)

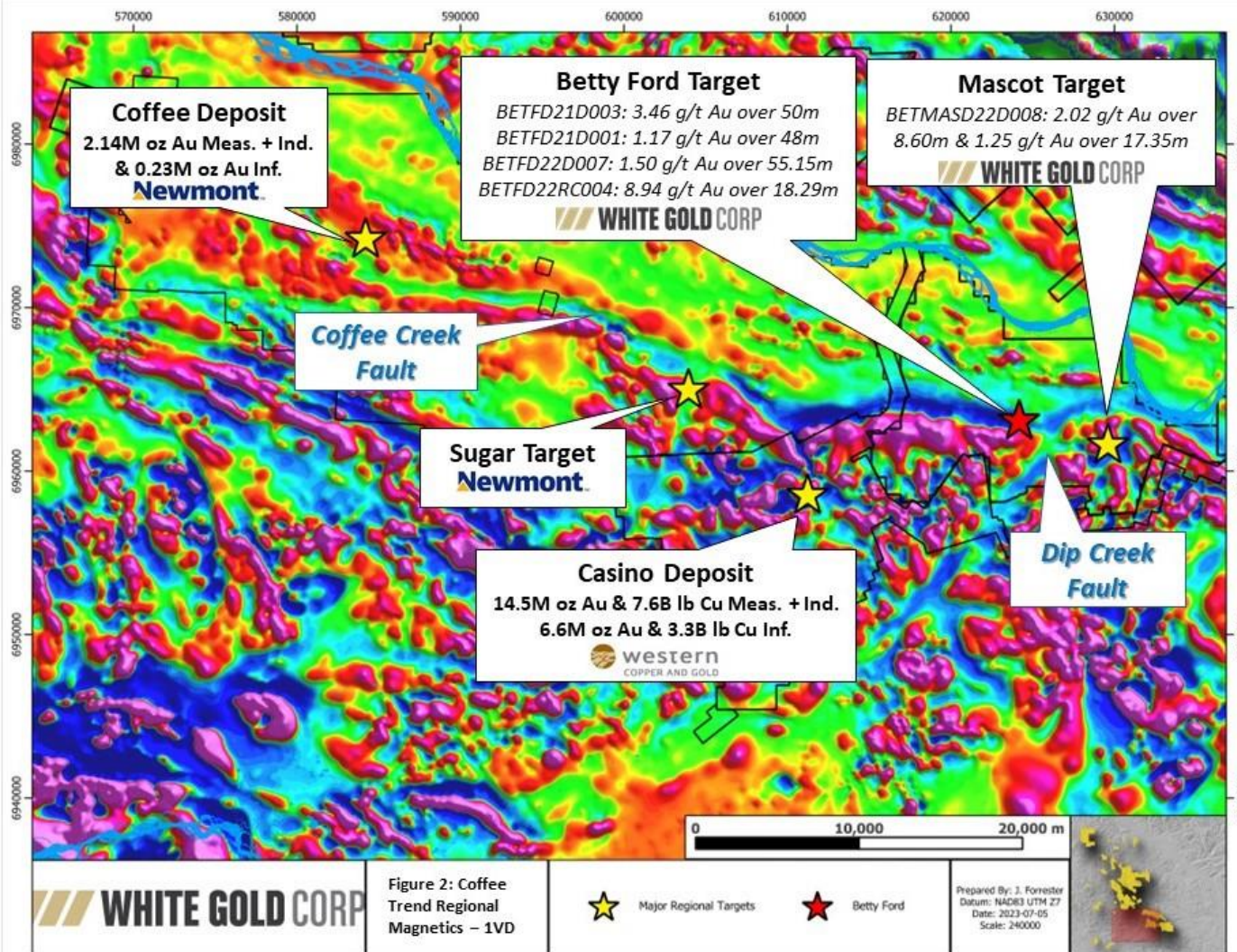
2km geochemical anomaly along Sixty Mile Pika Fault in rich historic placer camp

REGIONAL PROGRAM

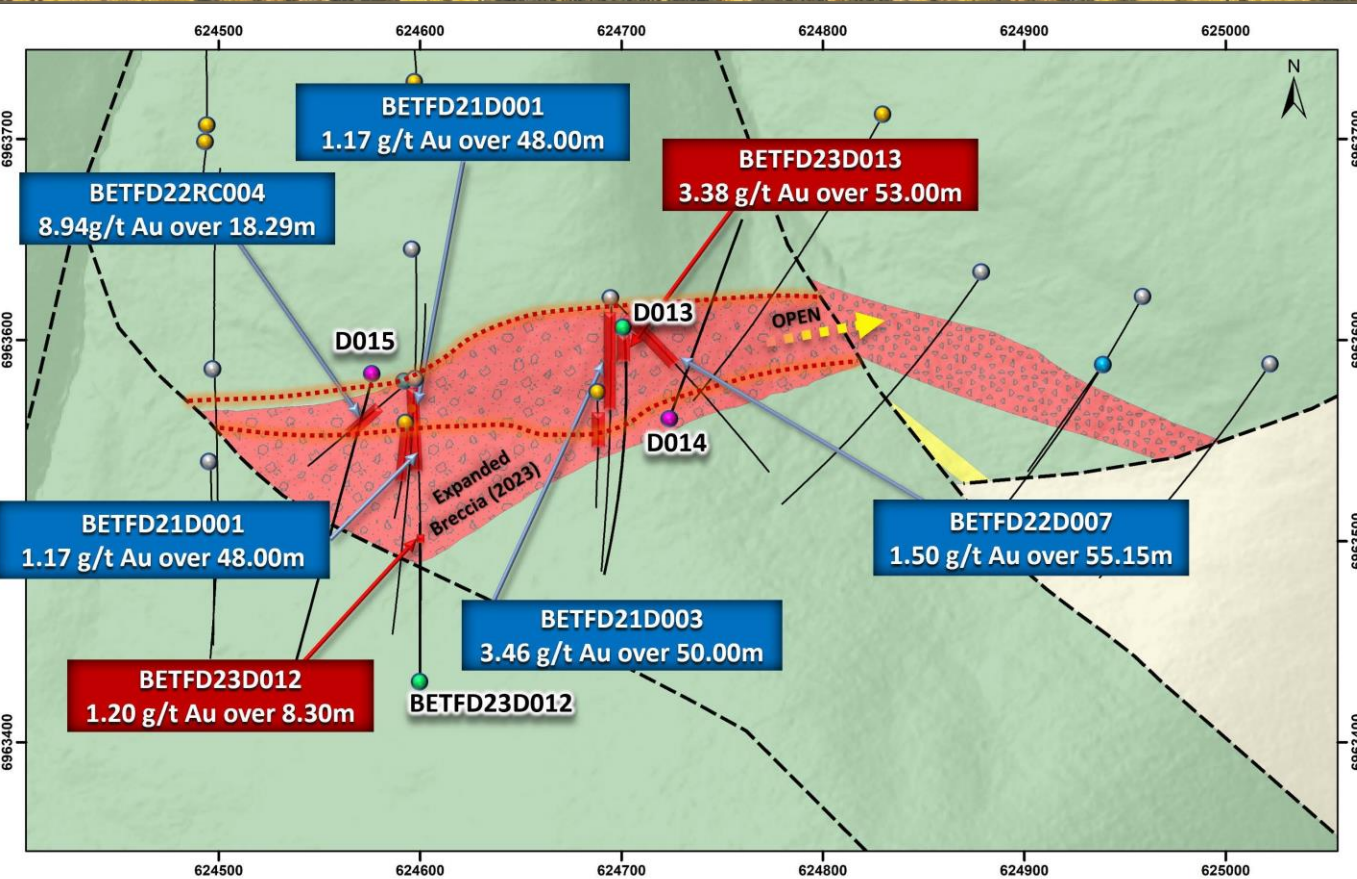
RAB Drilling at Toonie & Wolf (800m), Geological/structural mapping, Soil Sampling, IP-Resistivity Surveys, Ground magnetics, VLF-EM surveys



BETTY PROPERTY



BETTY FORD TARGET



Hole ID	From (m)	To (m)	Length (m)	Gold (g/t)
BETFD21D001	19.00	67.00	48.00	1.17
Inc.	23.00	50.00	27.00	1.54
BETFD21D003	33.00	83.00	50.00	3.46
Inc.	44.00	74.00	30.00	4.47
Inc.	44.00	63.00	19.00	5.25
BETFD22D007	22.85	78.00	55.15	1.50
Inc.	44.00	49.00	5.00	4.29
Inc.	61.00	67.00	6.00	2.67
BETFD22RC004	35.05	53.34	18.29	8.94
Inc.	45.72	51.82	6.10	21.73
BETFD23D012	166.70	175.00	8.30	1.20
BETFD23D013**	7.30	60.30	53.00	3.38
Inc.	18.00	24.30	6.30	7.19
Inc.	38.80	43.15	4.35	8.00

*All drill hole intercepts reported are core lengths. Currently there is insufficient data to estimate true thicknesses
 **Assays outstanding for BETFD23D013 364 m to 503 m
 ***Assays outstanding for BETFD23D014 & BETFD23D015

Legend

- 2023 Diamond Drill Hole Assay Results Received
- 2023 Diamond Drill Hole Assay Results Pending
- Pre-2023 Diamond Drill Hole
- RC Drill Hole
- RAB Hole
- Gold Intersections >0.5 g/t Au

Lithology Legend

- Felsic Porphyry Dyke
- Matrix Supported Polyolithic Breccia
- Clast Supported Polyolithic Breccia
- Mixed Biotite Quartz Feldspar Gneiss and Banded Quartzite
- Augen Gneiss

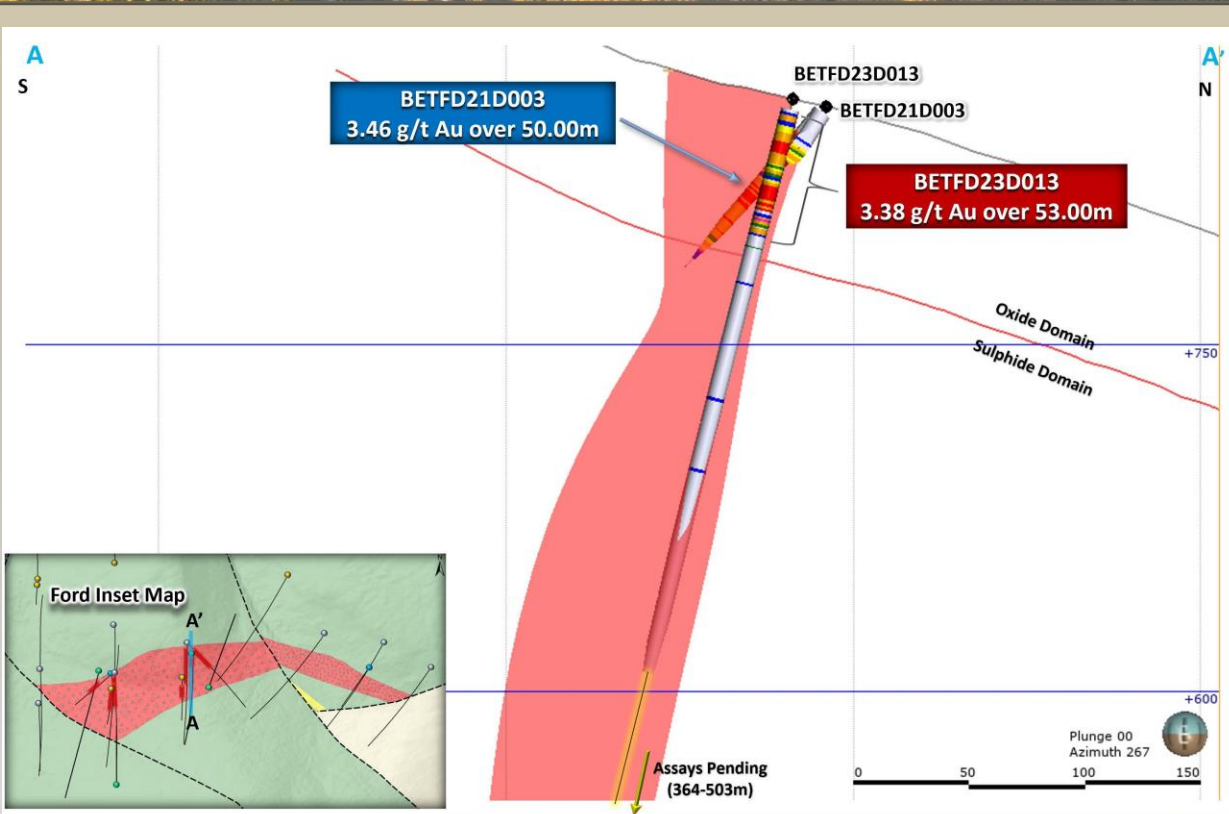
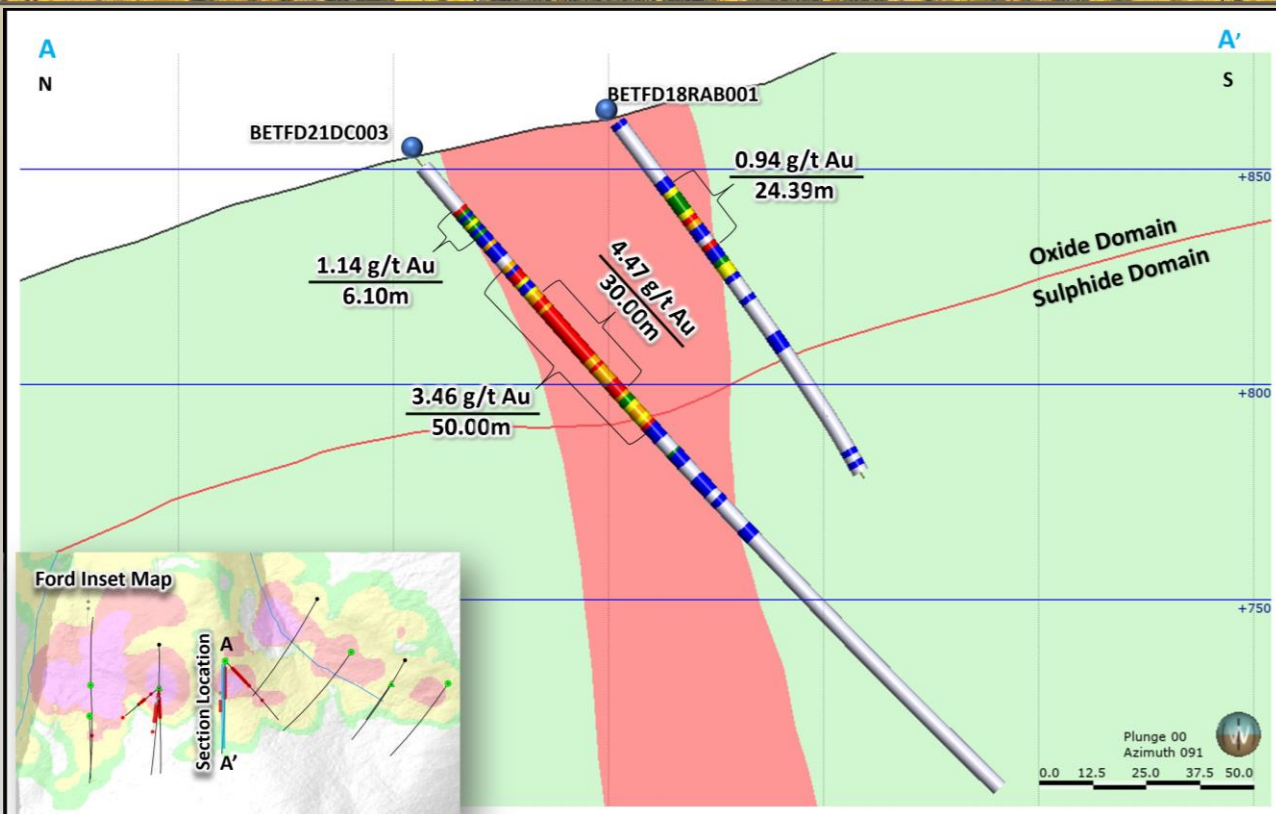
- Fault (Inferred)
- Previous Interpreted Breccia Outline

Betty Ford
2023 Drilling Highlights

Scale: 0 50 100 Meters
 Projection: NAD 83 Zone 7N
 Date: 04/06/2023

Figure 2

BETTY FORD TARGET CROSS SECTIONS



Legend

- Drill Hole
- Polyolithic Breccia
- Banded Quartzite +/- Schist

Au (g/t)

- >= 3.00
- 1.00-3.00
- 0.50-0.99
- 0.29-0.49
- 0.10-0.29
- <0.1

WHITE GOLD CORP

Betty Ford
Geological Cross Section: BETFD21D003

Scale: 0 50 Metres
Date: December 2022

Legend

- Drill Hole
- Polyolithic Breccia

Au (ppm)

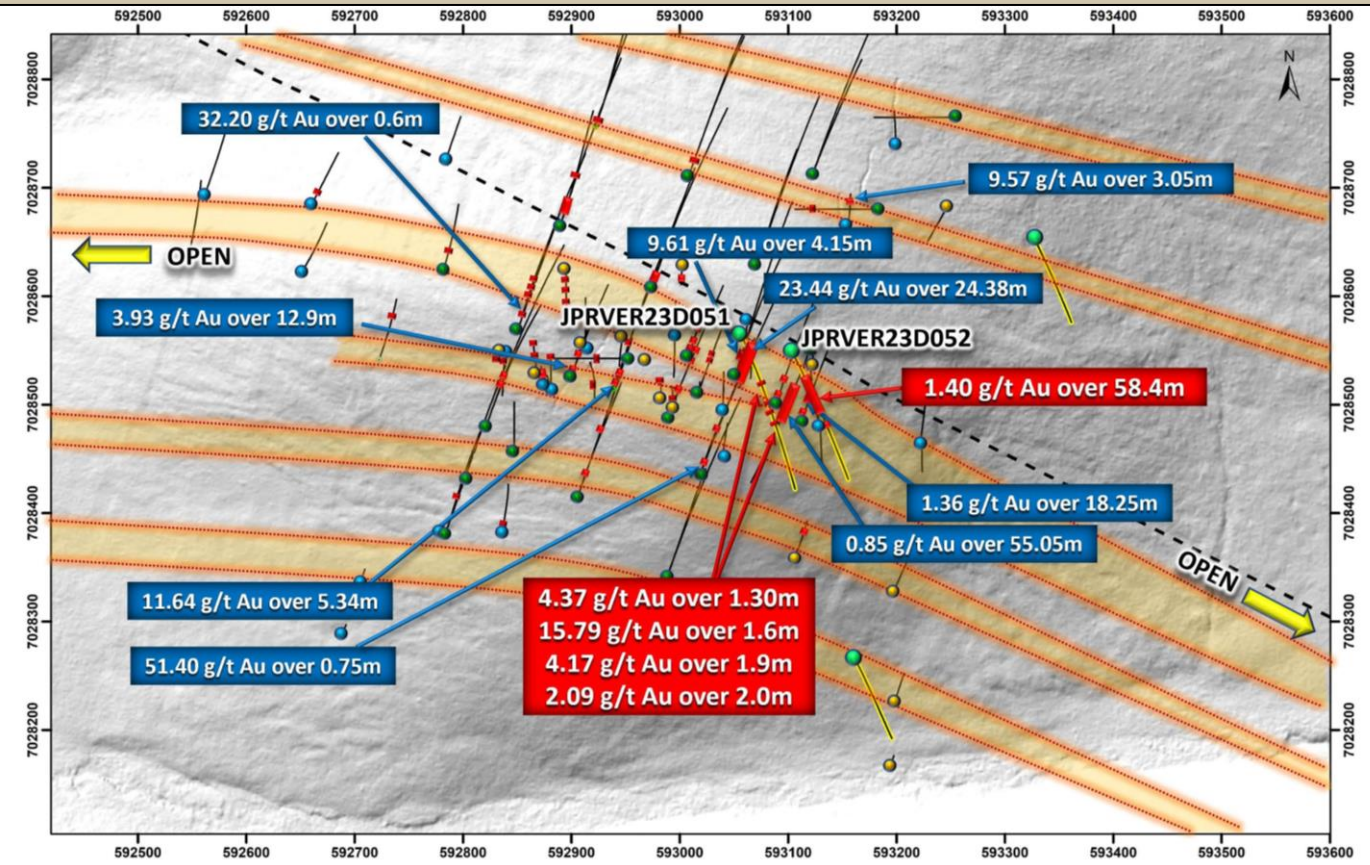
- 10
- 5
- 1
- 0.5
- 0.3
- 0.1

WHITE GOLD CORP

Betty Ford
Geological Cross Section: BETFD23D013

Scale: 0 50 Metres
Date: 04/09/2023
Figure 3

JP ROSS PROPERTY – VERTIGO



WHITE GOLD CORP

Vertigo
Surface Drill Plan Map

Scale: 0 50 100 200 Metres

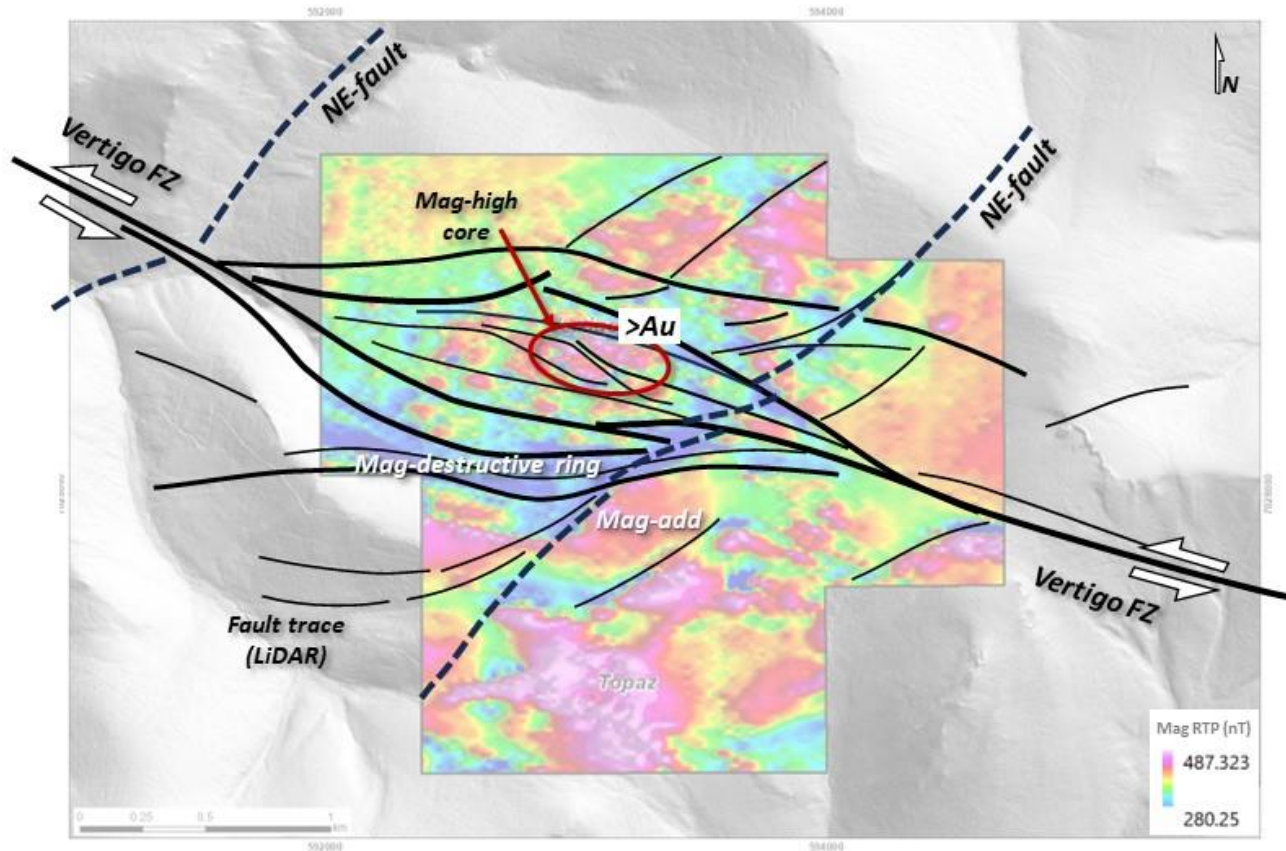
Projection: NAD 83 Zone 7N
Date: 04/09/2023

Figure 4

Table 1. Highlights of 2018-2019 Vertigo Drilling Assay Results, White Gold Corp.

Highlights of 2018-2019 Vertigo Drilling Assay Results						
Hole ID	Type	From (m)	To (m)	Length (m)*	Au (g/t)**	Ag (g/t)**
JPRVERRAB18-001	RAB	1.52	16.76	15.24	12.25	10.25
<i>incl.</i>	RAB	3.05	6.10	3.05	56.25	38.80
JPRVERRAB18-011	RAB	0.00	18.29	18.29	8.11	7.13
<i>incl.</i>	RAB	1.52	4.57	3.05	45.00	33.35
JPRVERRAB18-014	RAB	0.00	24.38	24.38	23.44	144.75
	RAB	65.53	73.15	7.62	3.98	14.80
JPRVERRC18-006	RC	0.00	22.86	22.86	9.46	36.68
<i>incl.</i>	RC	0.00	4.57	4.57	40.58	157.23
JPRVERRC18-009	RC	0.00	6.10	6.10	14.23	26.58
JPRVERRC18-013	RC	24.38	30.48	6.10	18.59	188.75
JPRVERRC18-016	RC	54.86	64.01	9.14	9.20	14.68
<i>incl.</i>	RC	54.86	59.44	4.57	17.20	27.33
JPRVER19D0005	DDH - Core	20.00	24.15	4.15	9.61	32.67
	DDH - Core	104.50	106.25	1.75	20.15	30.27
JPRVER19D0007	DDH - Core	14.85	15.60	0.75	51.40	148.00
JPRVER19D0015	DDH - Core	3.00	8.34	5.34	11.64	31.68
<i>incl.</i>	DDH - Core	6.20	6.62	0.42	141.00	354.00
	DDH - Core	92.00	94.48	2.48	18.46	23.90
<i>incl.</i>	DDH - Core	92.00	93.07	1.07	39.70	46.70
JPRVER19D0016	DDH - Core	4.00	9.60	5.60	6.26	21.70
<i>incl.</i>	DDH - Core	8.60	9.60	1.00	32.50	106.00
JPRVER19D0049	DDH - Core	29.70	42.60	12.90	3.93	23.40
JPRVER19D0050	DDH - Core	49.20	104.25	55.05	0.85	4.89

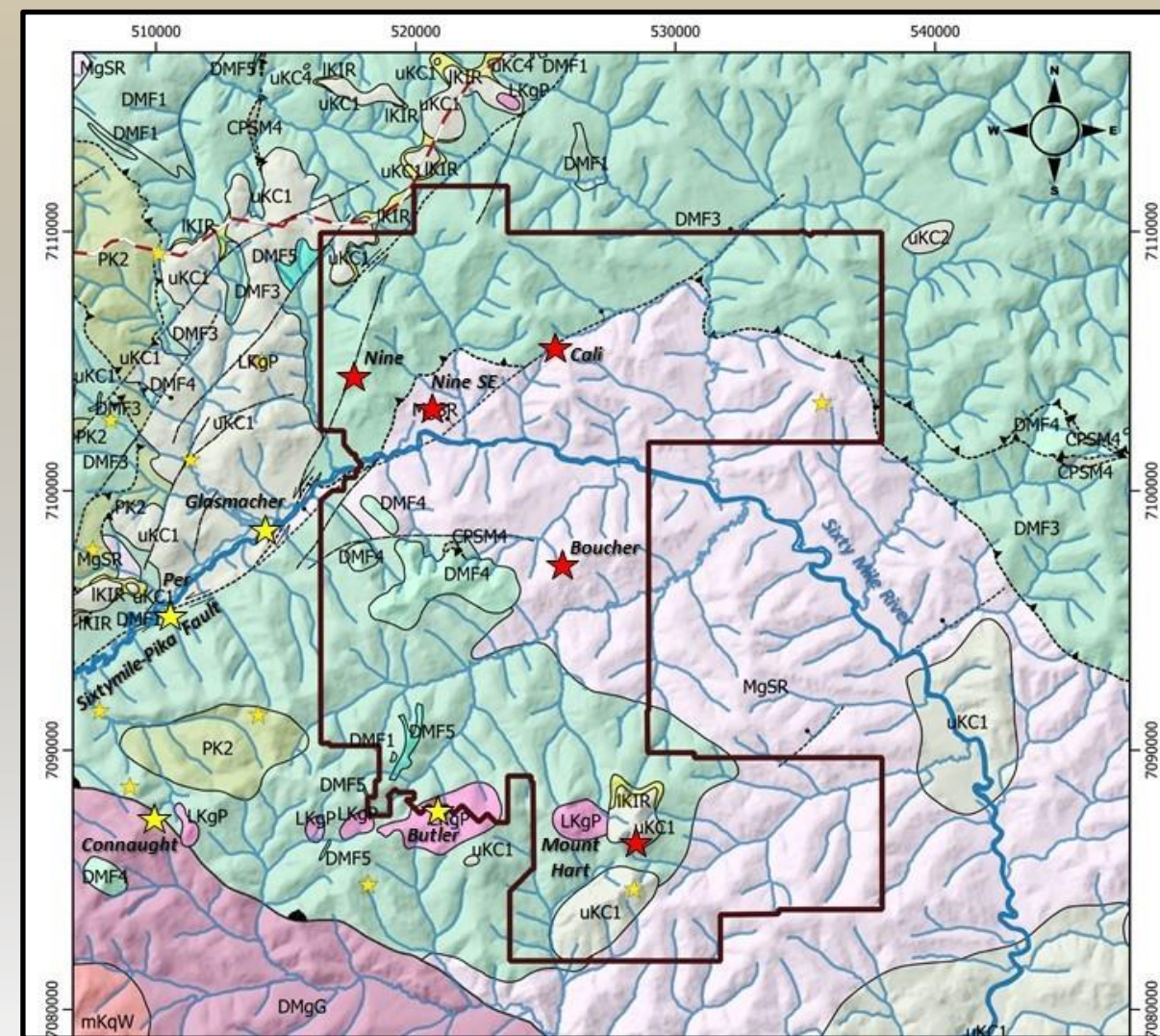
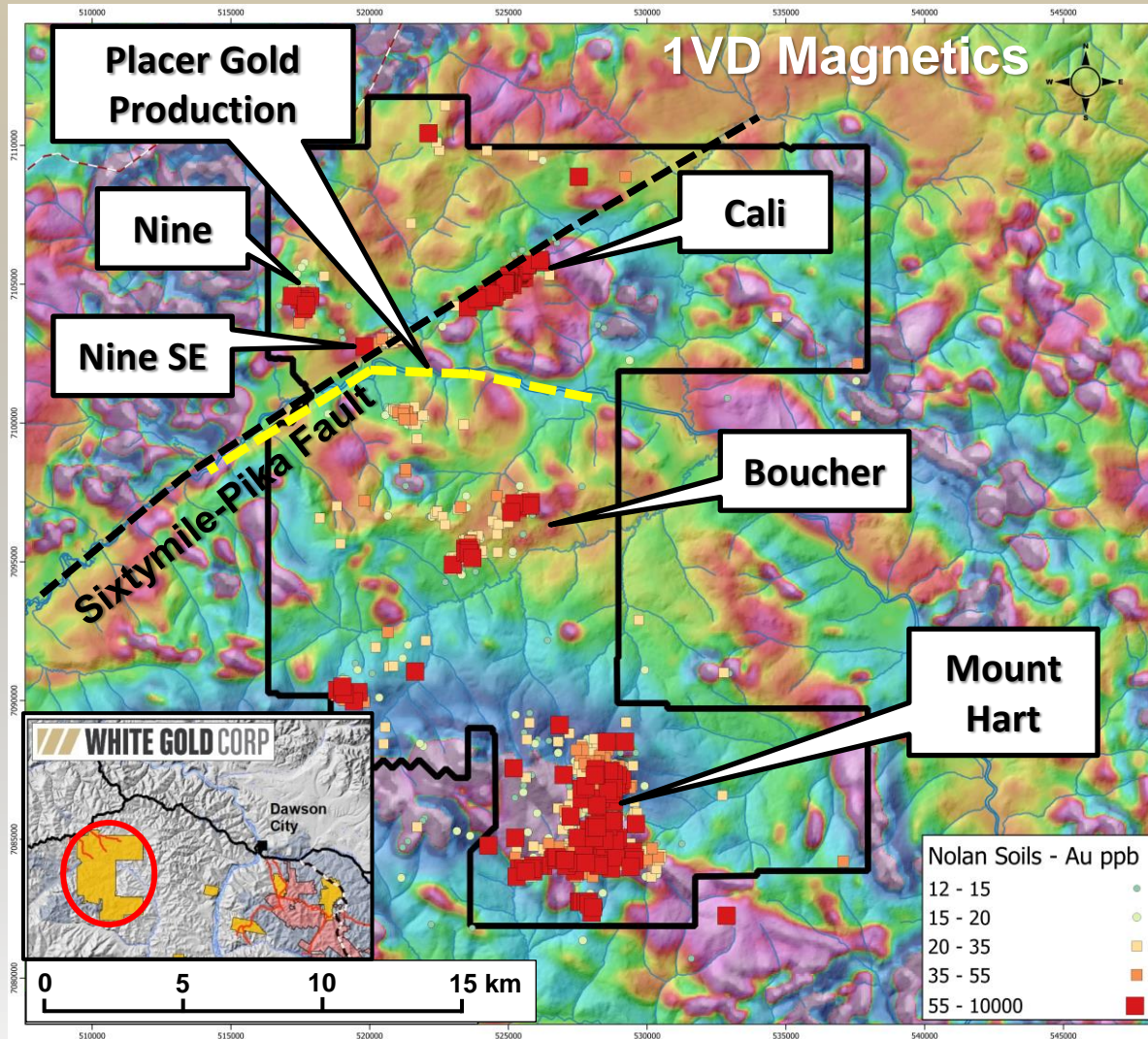
New Structural Interpretation – M. Sanchez (Fault Rocks)



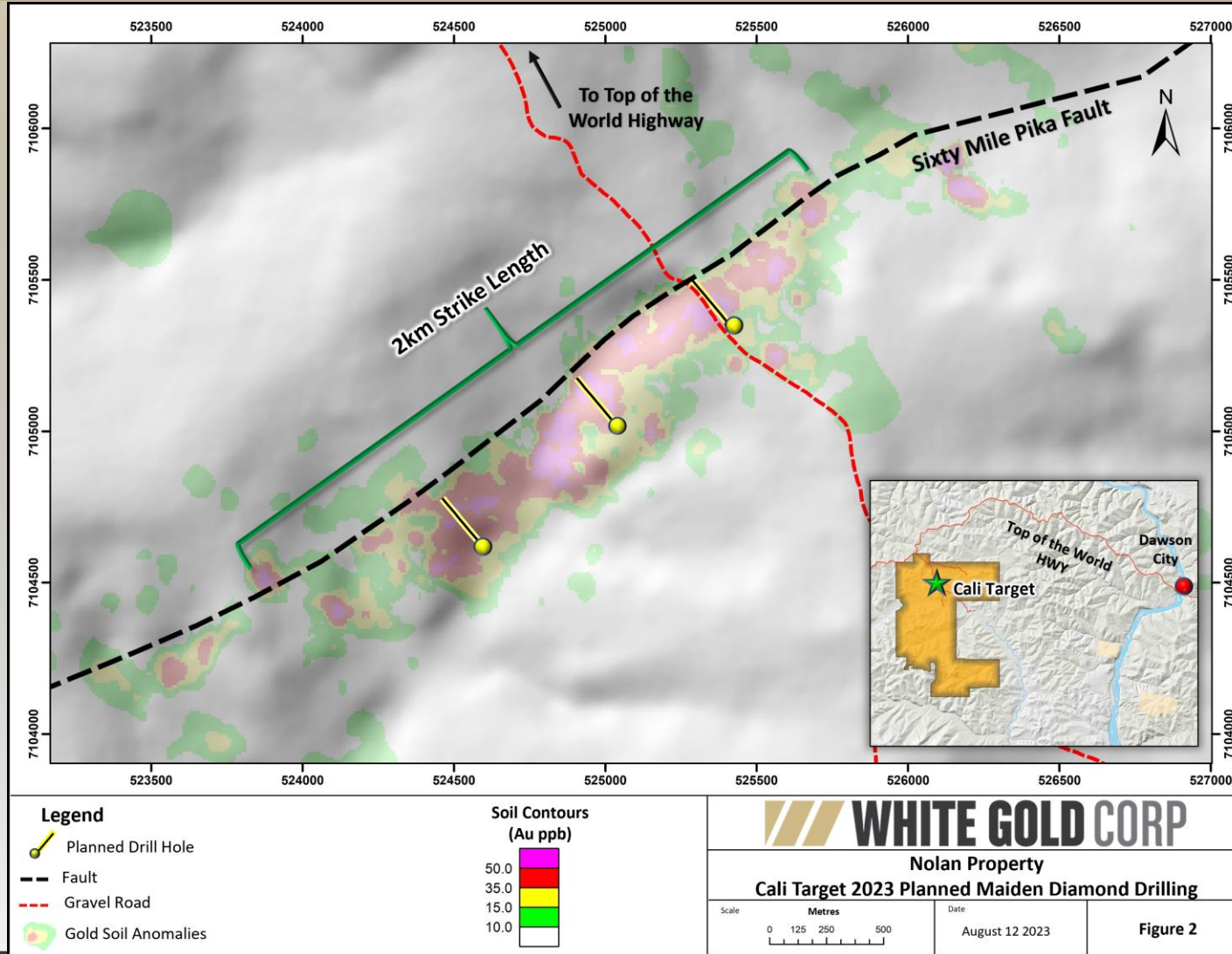
WNW-oriented sinistral pull-apart at orthogonal fault intersection

- Gold mineralization occurs within a ~2 by 0.8 km mag-destructive sinistral pull-apart between two NE-trending magnetic and topographic (LiDAR) lineaments.
- Principal gold anomaly is located at a mag-addition zone with steep-dipping quartz veins following WNW- and NE-trends.

NOLAN PROPERTY



NOLAN PROPERTY – CALI TARGET



HAYES PROPERTY SOILS

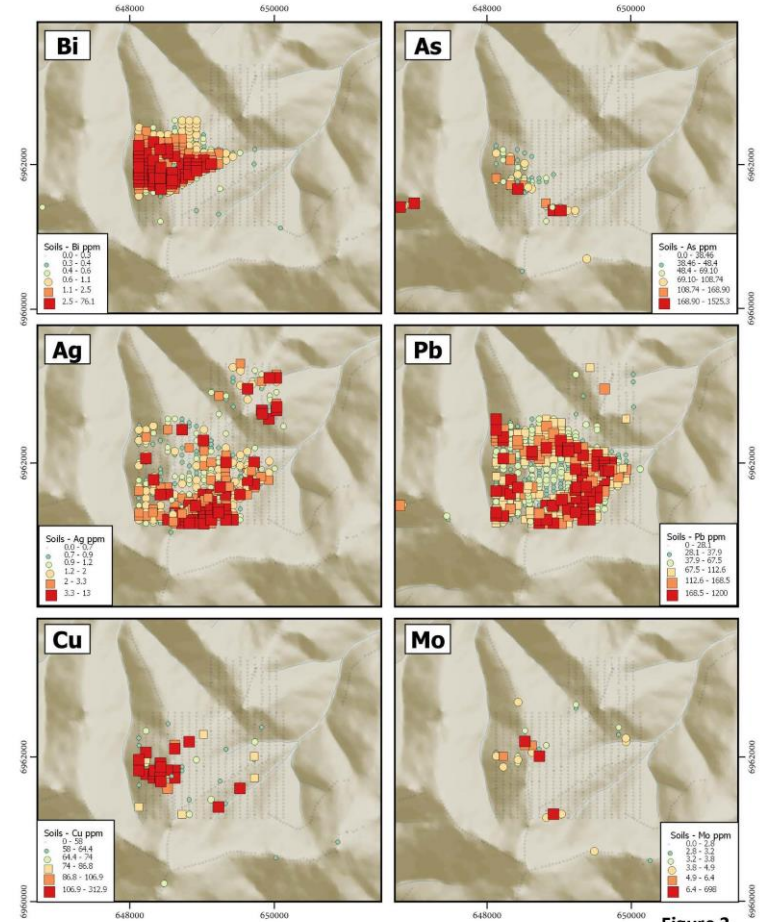
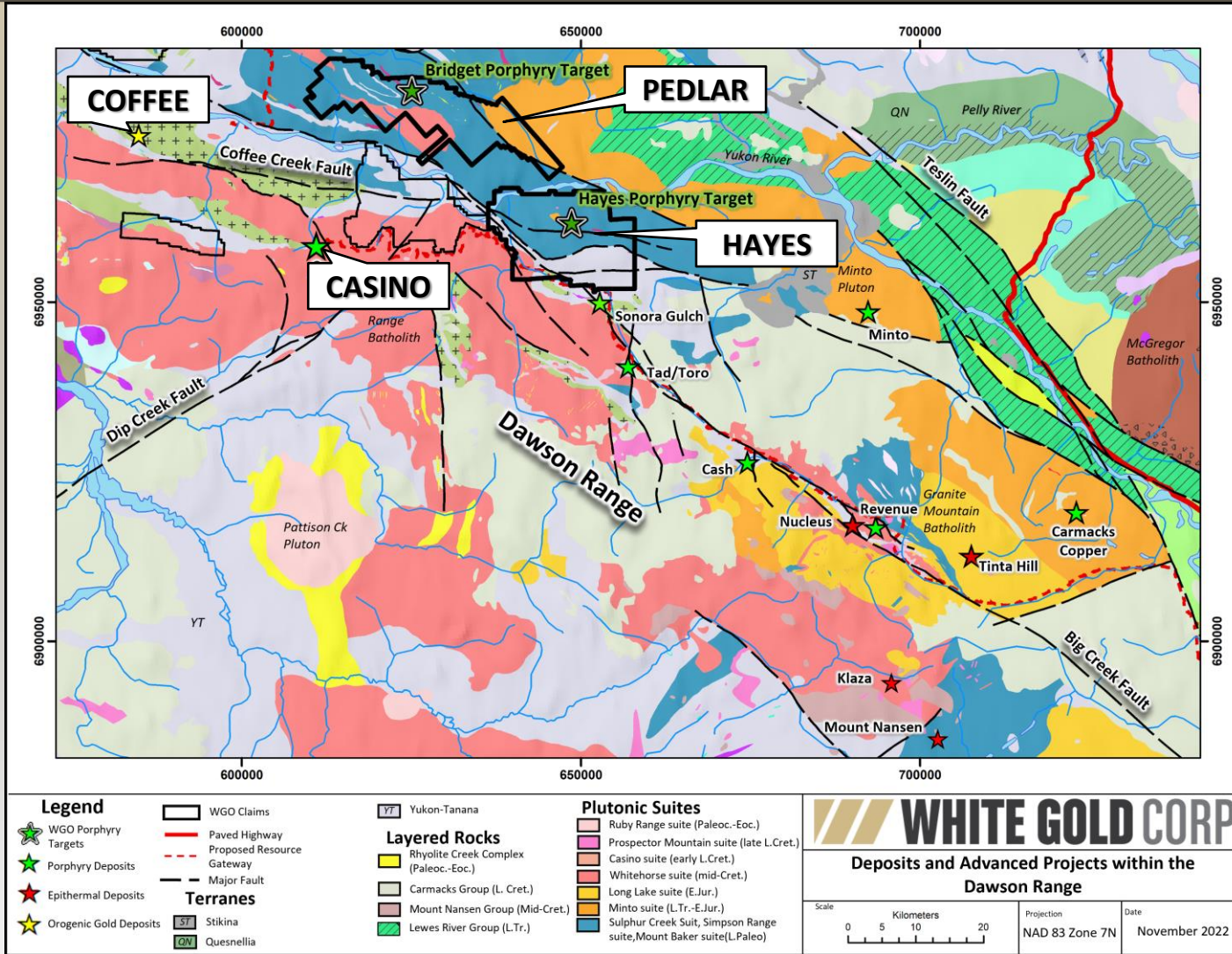
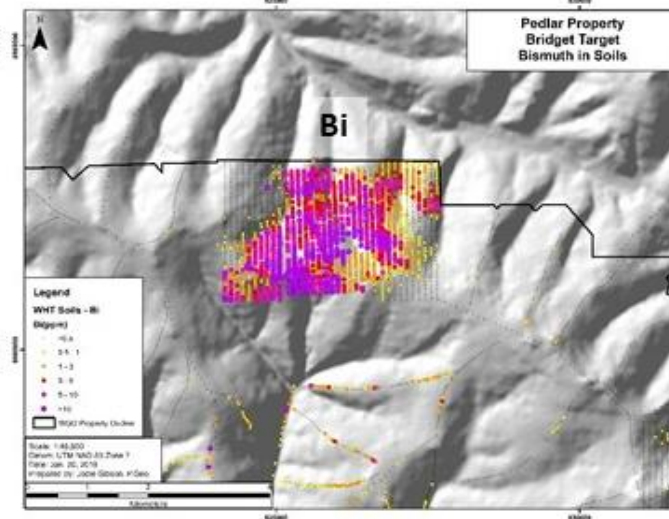
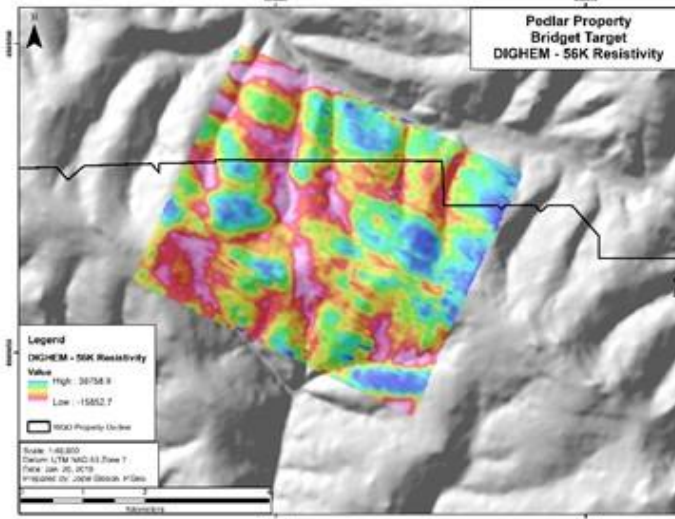
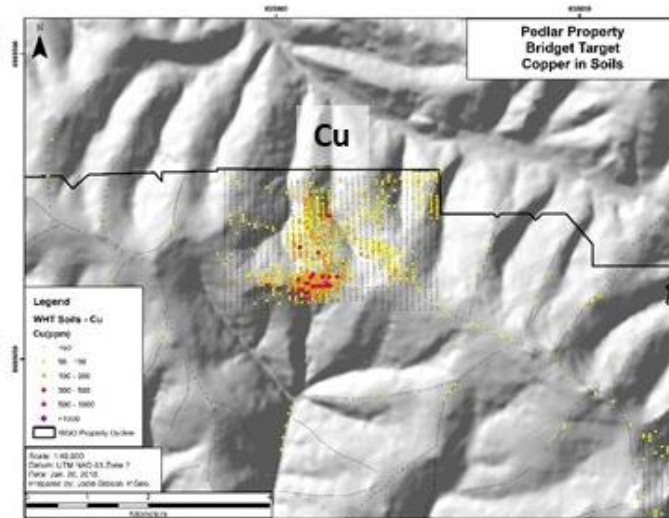
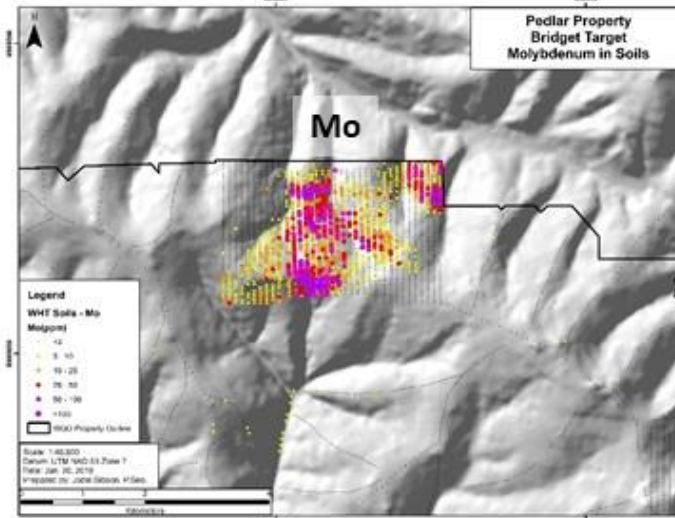


Figure 3
Hayes - 2021 Soils Results
 Prepared By: J. Forester
 Datum: NAD83 UTM
 Date: 2022-03-28
 Scale: 1:50,000

PEDLAR PROPERTY SOILS





TSX-V: WGO | OTC: WHGOF | FRA: 29W

82 Richmond St E, Toronto, Ontario M5C 1P1
ir@whitegoldcorp.ca
(647) 930-1880