



CORPORATE PRESENTATION

NOVEMBER 2022

TSXV:DEF

OTCQX:DNCVF

WKN: A1JQW5



DISCLAIMER

FORWARD-LOOKING INFORMATION AND STATEMENTS

This presentation contains “forward-looking information” and “forward-looking statements” within the meaning of applicable securities laws. This information and statements address future activities, events, plans, developments and projections. All statements, other than statements of historical fact, constitute forward looking statements or forward-looking information. Such forward-looking information and statements are frequently identified by words such as “may”, “will”, “should”, “anticipate”, “plan”, “expect”, “believe”, “estimate”, “intend” and similar terminology and reflect assumptions, estimates, opinions and analysis made by management of Defiance in light of its experience, current conditions, expectations of future development and other factors which it believes to be reasonable and relevant.

Forward-looking information and statements involve known and unknown risks and uncertainties that may cause Defiance’s actual results, performance and achievements to differ materially from those expressed or implied by the forward-looking information and statements and accordingly, undue reliance should not be placed thereon. Risks and uncertainties that may cause actual results to vary include but are not limited to the speculative nature of mineral exploration and development, including the uncertainty of reserve and resource estimates; operational and technical difficulties; the availability of suitable financing alternatives; fluctuations in gold and other commodity prices; changes to and compliance with applicable laws and regulations, including environmental laws and obtaining requisite permits; political, economic and other risks arising from Defiance’s Mexican activities; fluctuations in foreign exchange rates; as well as other risks and uncertainties which are more fully described in our annual and quarterly Management’s Discussion and Analysis and in other filings made by us with Canadian securities regulatory authorities and available at www.sedar.com. Defiance disclaims any obligation to update or revise any forward-looking information or statements except as may be required by law.

NI43-101 DISCLOSURE:

George Cavey, P. Geo., a Qualified Person under the meaning of Canadian National Instrument 43-101 is responsible for the technical information in this presentation.

SOLID PROJECT BASE | WITH A FOCUS ON PRECIOUS METALS

	Zacatecas Projects (San Acacio)	Tepal Project
LOCATION	Zacatecas	Michoacán
PRIMARY COMMODITY	Silver	Gold-Copper
DEPOSIT TYPE	Epithermal Vein	Porphyry-Epithermal
STAGE	Resource	Pre-Feasibility
NI 43-101 RESOURCE	16.9mm ozs Ag *	1.8mm ozs Au + 813mm lbs Cu
INFRASTRUCTURE	Excellent; road, power grid, water, and experienced Mexican labor	Excellent; road, seaport, access with low topographical relief
OWNERSHIP	Under Option	



*-Source: NI-43-101 Technical Report and Resource Estimate, San Acacio Silver Deposit, Zacatecas Sate, Mexico, by Giroux and Cuttle; September 2014 (further details in the Appendix of this presentation)

+ -Source: NI-43-101 Technical Report Preliminary Economic Assessment on the Tepal Project, Michoacan, Mexico, JDS Energy & Mining Inc; January 2017 (further details in the Appendix of this presentation)

WHY INVEST IN DEFIANCE?

**Robust Resource Base
(1,2) and Significant
Exploration Potential**

**Proven Mine Finders:
Experienced** Management
team with decades of
exploration success leading
to M&A and Mine
Development

**Leverage to Precious
Metal Prices:**
Tepal Au Price Sensitivity
Zacatecas Resource
Upside

**Highly Aligned with
Shareholders:**
Management and Key
Shareholders aligned

**Drill-ready exploration
targets:** Systematic exploration
and reinterpretation
of historical work has generated
highly prospective targets to add
ounces and increase grade.



(1) Please see Defiance news release dated January 15, 2015 and Appendix for 43-101 Inferred Mineral Resource Estimate

(2) Please see ValOro news release dated January 19, 2017 and Appendix for PEA Assumptions

TIGHT SHARE STRUCTURE

Share Structure

TRADING	Trading Symbols	TSXV:DEF OTC:DNCVF
	52 Week Hi-Low	\$0.75-\$0.14
	Average Daily Trading Volume	~337,784
<hr/>		
CASH POSITION October 2022	Cash (CAD \$M)	~\$11.0
<hr/>		
SHARE STRUCTURE November 10 th ,2022	Share Price	\$0.185
	Market Cap (CAD \$M)	~\$42.1M
	Common Shares	227,702,437
	Options	9.5
	Warrants	20.61
	DSU/PSU/RSU	0.31
	Fully Diluted	260,723,202
<hr/>		
OWNERSHIP	Institutional Ownership	~35%

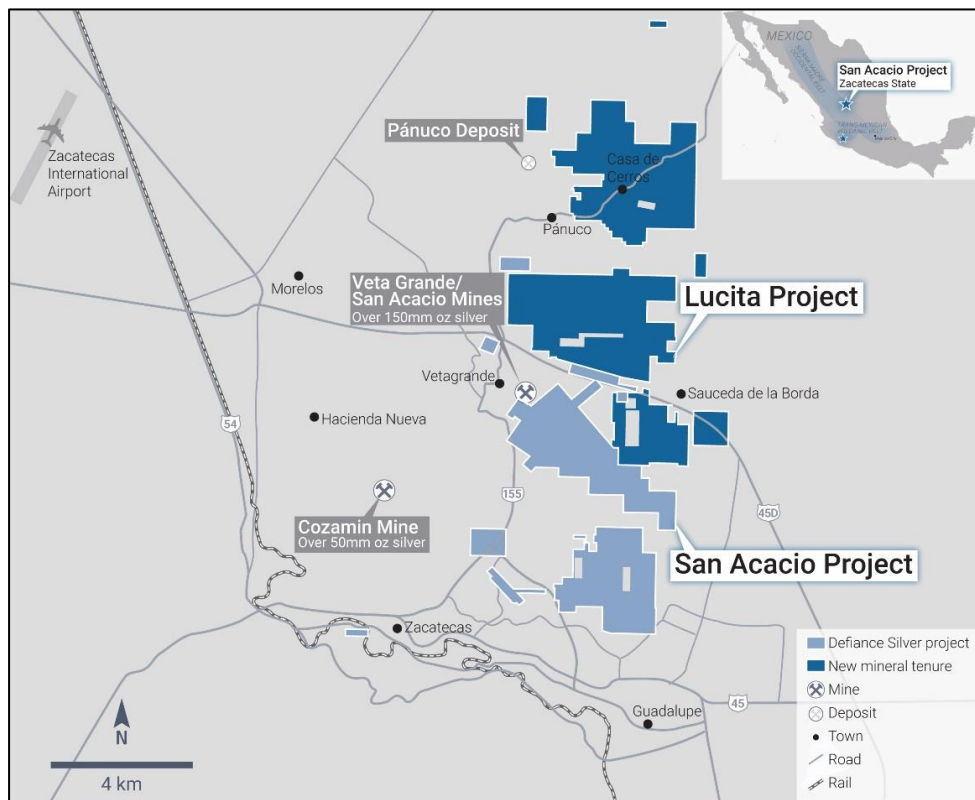
Share Price History



Source: Sedar, TMX, LBMA, Yahoo Finance

ZACATECAS DISTRICT PROJECTS

WITHIN THE BILLION OUNCE ZACATECAS MINING DISTRICT



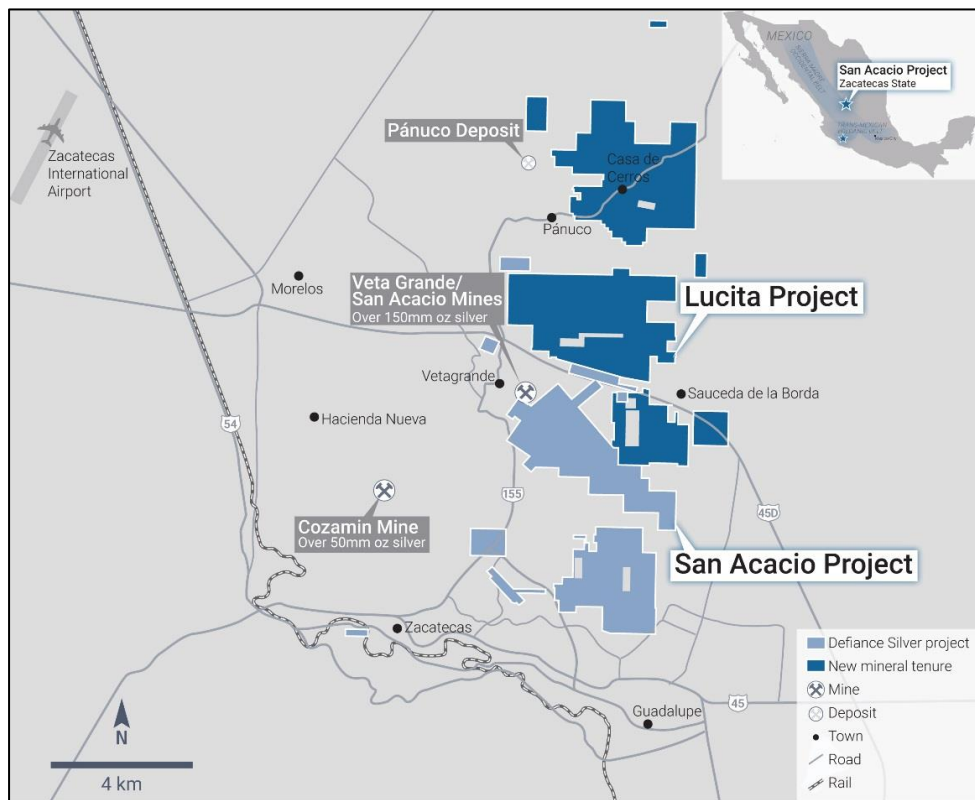
- Located in Zacatecas, Mexico.
- Option to acquire 100% ownership.
- Current Initial Resource: 16.9 mm Oz. Ag based on 44 holes totalling 10,200m of drilling.
- San Acacio and Lagartos projects located on the prolific Veta Grande and Mala Noche Vein Systems.
- Significant Intersections outside of current resource; Base Metals never tabled into previous resource estimates.
- Excellent infrastructure, topography, and labour.
- The Zacatecas Silver district has produced >1B ozs Ag and is still a prolific mining region for silver and base metal deposits.
- “Fresnillo from the 1960’s”. Similar crustal position/crustal blocks
 - Fresnillo out of ore by the mid 1960’s; now the world’s largest primary silver mine
 - In 1975, as a result of geochemical, geophysical and geological programs, Fresnillo discovered the Santo Nino vein at a depth of approximately 300m; 3m of 1087 g/t Ag, 1.62 g/t Au, 0.4% Pb, 0.7% Zn.*

Discovery-Focused Geoscience Works

** (Ruvalcaba-Ruiz & Thompson, 1988; Gemmel, *et al.*, 1988, Querol & Palacios, 1990

LUCITA EXPLORATION PROJECT

DISCOVERY READY PARTNERSHIP WITH PAN AMERICAN SILVER

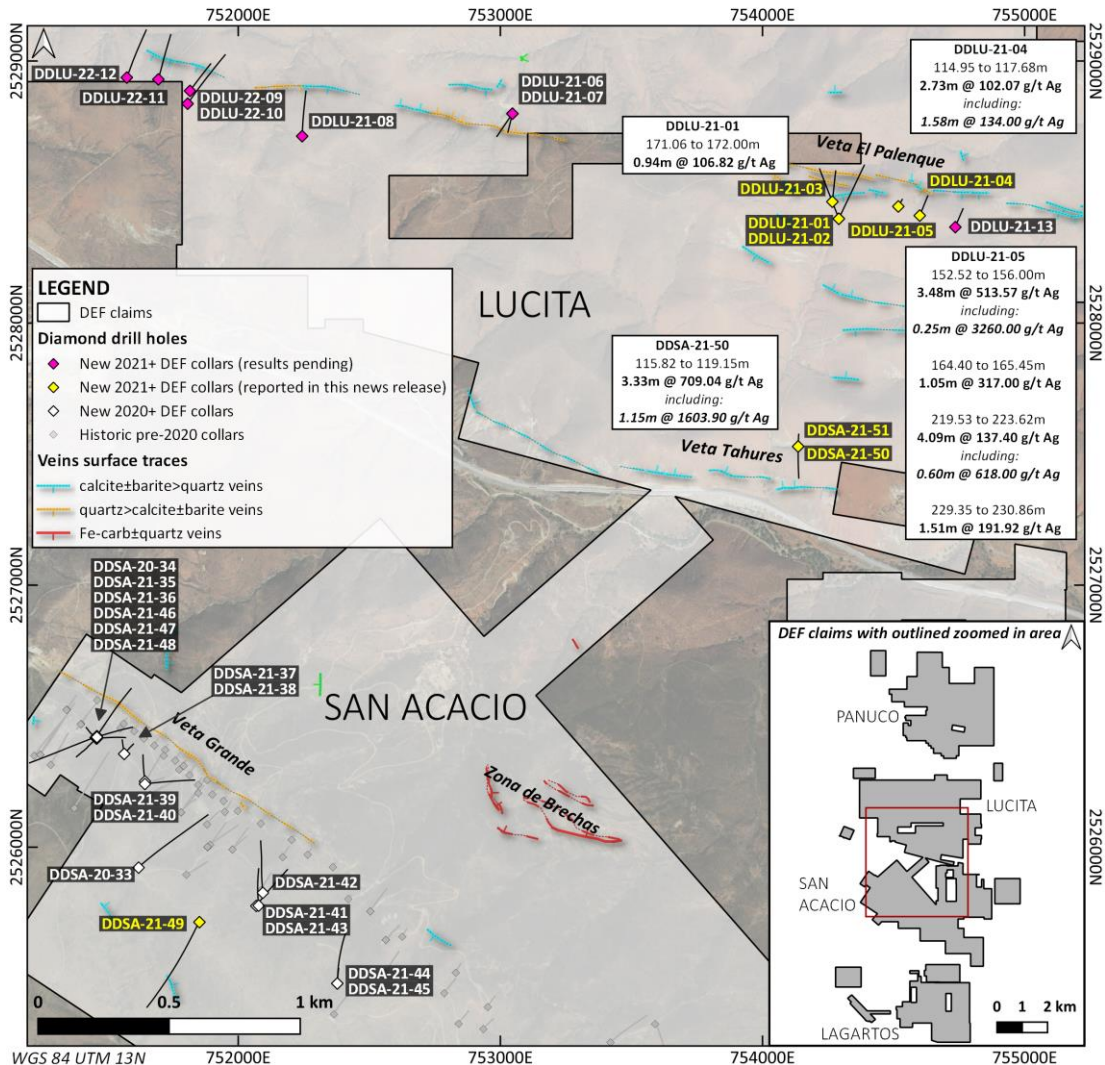


- Nearly tripled Defiance's land position in historic Zacatecas silver district.
- Option to acquire 100% ownership from Pan American Silver
- High-grade historical drilling on Northern, Panuco licenses.
- Significant, well-mineralized, multi-kilometer target at Lucita Central (Palenque Vein System). Individual drill results* up to **3260 g/t Ag & 1603 g/t Ag**

Hole	From	To	Interval	Au g/t	Ag g/t
DDSA-21-50	115.82	119.15	3.33	0.06	709.04
including	116.25	117.4	1.15	0.11	1603.90
DDLU-21-01	171.06	172	0.94	0.11	106.82
DDLU-21-04	114.95	117.68	2.73	0.16	102.07
including	114.95	116.53	1.58	0.11	134.00
DDLU-21-05	152.52	156	3.48	0.02	513.57
including	154.1	156	1.9	0.03	940.18
including	154.1	154.35	0.25	0.07	3260.00
DDLU-21-05	164.4	165.45	1.05	0.19	317.00
DDLU-21-05	219.53	223.62	4.09	0.10	137.40
including	219.53	220.13	0.6	0.28	618.00
DDLU-21-05	229.35	230.86	1.51	0.76	191.92

*True thickness unknown

LUCITA CENTRAL



- Multi-Kilometre vein system. Surface mapping has identified over 20km strike length of prospective structures.
- 4,750 metres drilled to date; 13 holes complete, 8 holes pending results from lab.
- Shallow vein system, multiple vein, vein-breccia and stockwork style zones have been encountered.
- Results to date include*:
 - 3.48m @ 513.57 g/t Ag (DDL-21-05)
 - 3.33m @ 709.04 g/t Ag (DDSA-21-50)

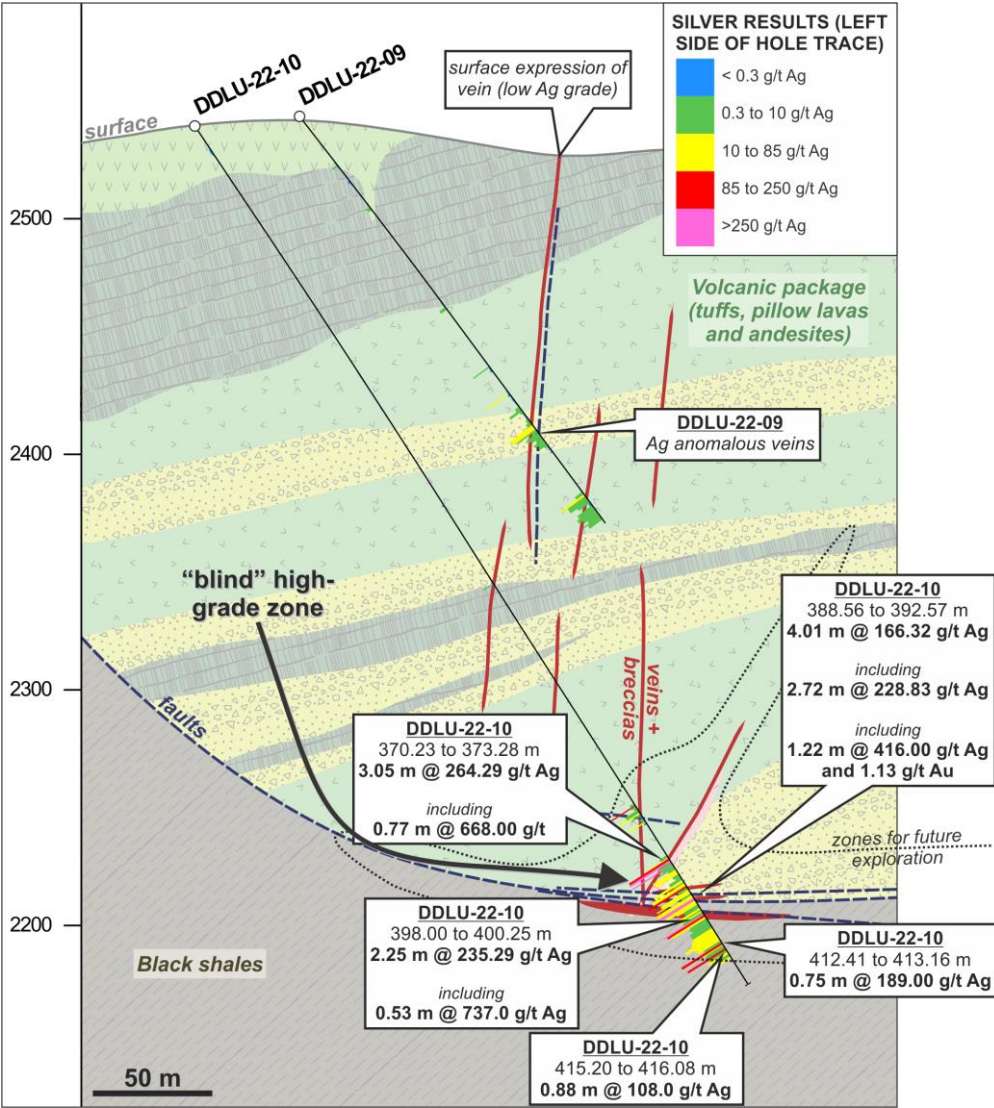


- Pyrrargyrite-proustite, acanthite and argentite hosted in polyphase quartz and quartz calcite veins

*True thickness unknown

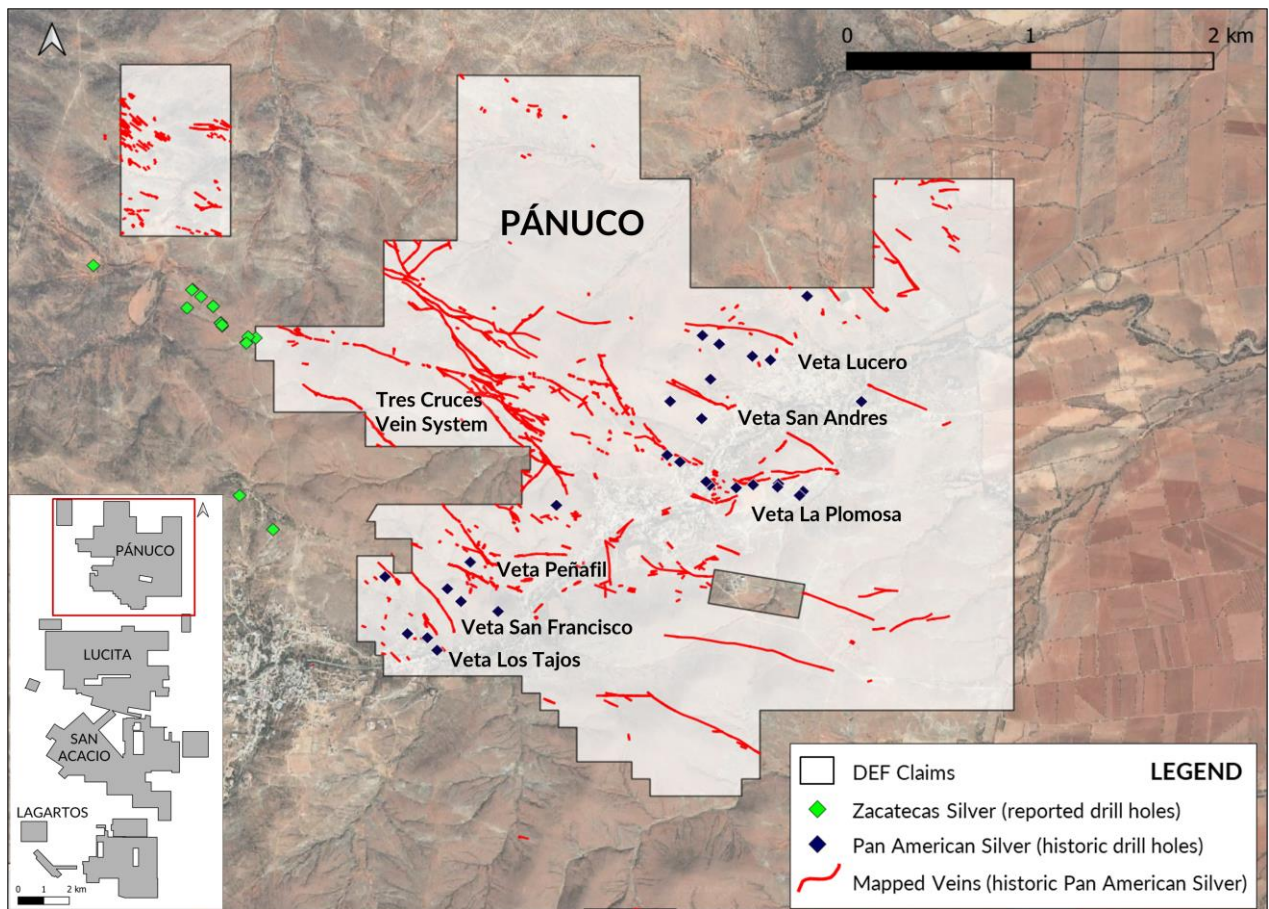
LUCITA WEST

- Part of the Multi-Kilometre Palenque vein system.
- Blind mineralization found at depth on a regional structure. Follow up drilling is planned on this newly encountered mineralized system
- Shallow vein system, multiple vein, vein-breccia and stockwork style zones have been encountered.



*True thickness unknown

LUCITA NORTH - PANUCO



- Multi-Kilometre vein system.
- Northern Zacatecas District
- 3 phases of historical drilling completed, returning high grade silver in a number of different veins.
- Neighbouring operators currently reporting high grade results on veins that continue onto the project.
- Results to date include*:
 - 1.25m @779 g/t Ag (LU-11-19)
 - 3.35m @325 g/t Ag (LU-11-16)
- Expanded follow up exploration planned for 2022.
 - Detailed surface mapping and sampling
 - Geophysics and Drilling

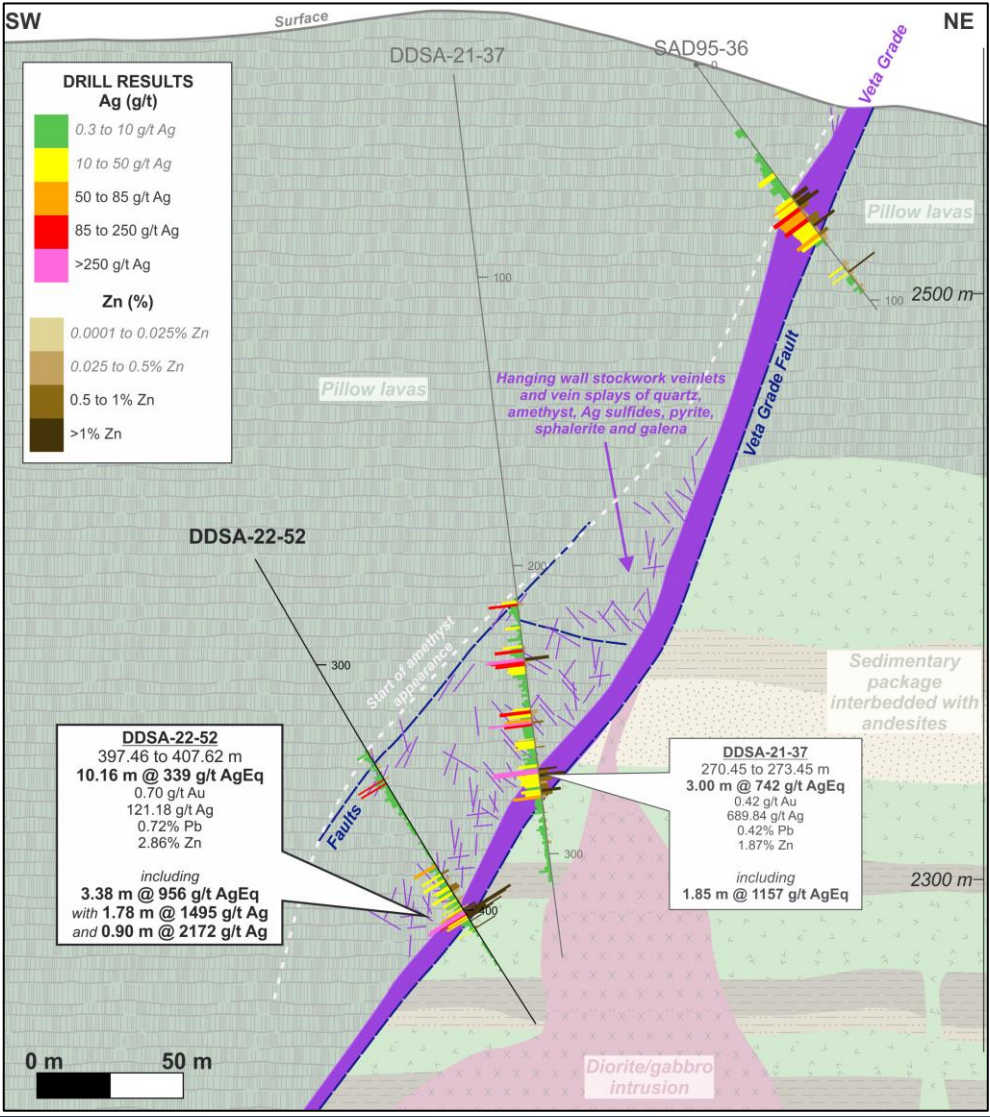
*True thickness unknown

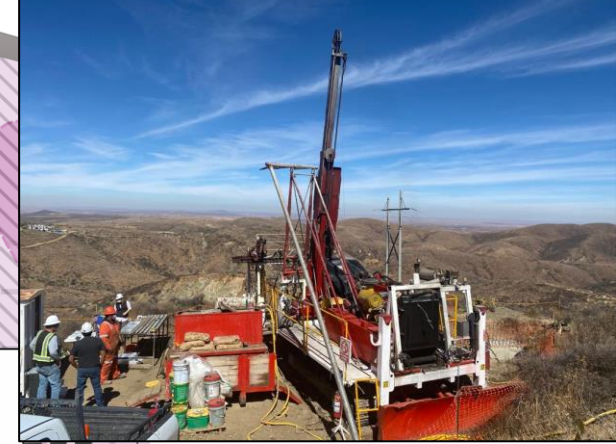
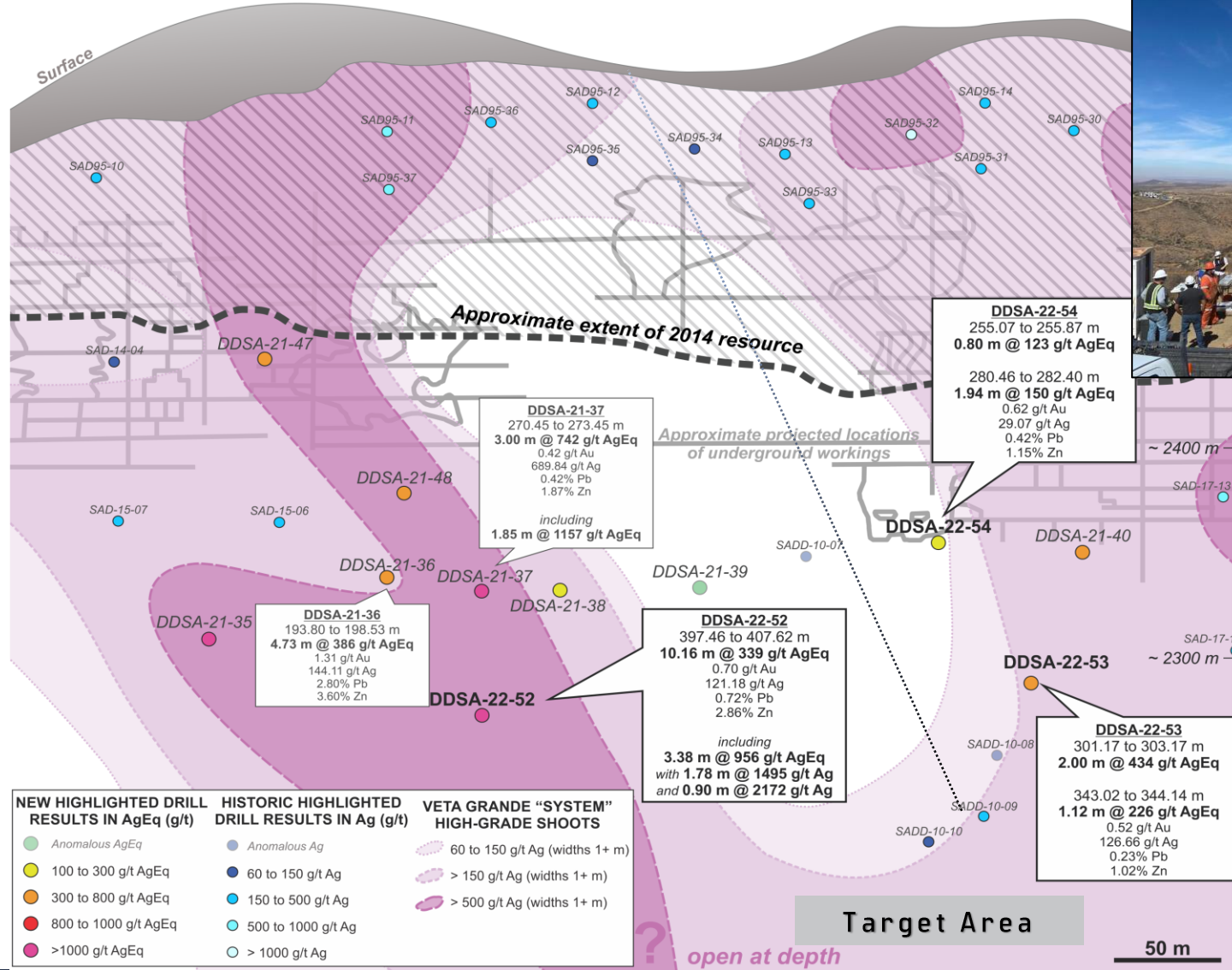
VETA GRANDE

SAN ACACIO RESOURCE PROJECT



- Located in Zacatecas, Mexico. One of Mexico's most well-known mining districts
- Excellent infrastructure, topography, and skilled local workforce. 10-minute drive from city centre on paved roads, power on site.
- Option to acquire 100% ownership. Lagartos property owned outright
- Current Initial Resource: 16.9 mm Oz. Ag based on 44 holes totalling 10,200m of drilling. Over 20,000m drilling completed since last resource update. ~7800m drilling completed last year.
- San Acacio and Lagartos projects located on the prolific Veta Grande and Mala Noche Vein Systems. Next door neighbour is the 3800 TPD Cozamin mine (Capstone mining)
- Veta Grande vein system has historically produced >150m oz of Ag.
- Significant Intersections outside of current resource; Base Metals never tabled into previous resource estimates.
- The Zacatecas mining district has produced >1B ozs Ag and is still a prolific mining region for silver and base metal deposits.





Polyphase Vein Breccias

DDSA-22-54
 255.07 to 255.87 m
0.80 m @ 123 g/t AgEq
 280.46 to 282.40 m
1.94 m @ 150 g/t AgEq
 0.62 g/t Au
 29.07 g/t Ag
 0.42% Pb
 1.15% Zn

DDSA-21-37
 270.45 to 273.45 m
3.00 m @ 742 g/t AgEq
 0.42 g/t Au
 689.84 g/t Ag
 0.42% Pb
 1.87% Zn
 including
1.85 m @ 1157 g/t AgEq

DDSA-22-52
 397.46 to 407.62 m
10.16 m @ 339 g/t AgEq
 0.70 g/t Au
 121.18 g/t Ag
 0.72% Pb
 2.86% Zn
 including
3.38 m @ 956 g/t AgEq
 with **1.78 m @ 1495 g/t Ag**
 and **0.90 m @ 2172 g/t Ag**

DDSA-22-53
 301.17 to 303.17 m
2.00 m @ 434 g/t AgEq
 343.02 to 344.14 m
1.12 m @ 226 g/t AgEq
 0.52 g/t Au
 126.66 g/t Ag
 0.23% Pb
 1.02% Zn

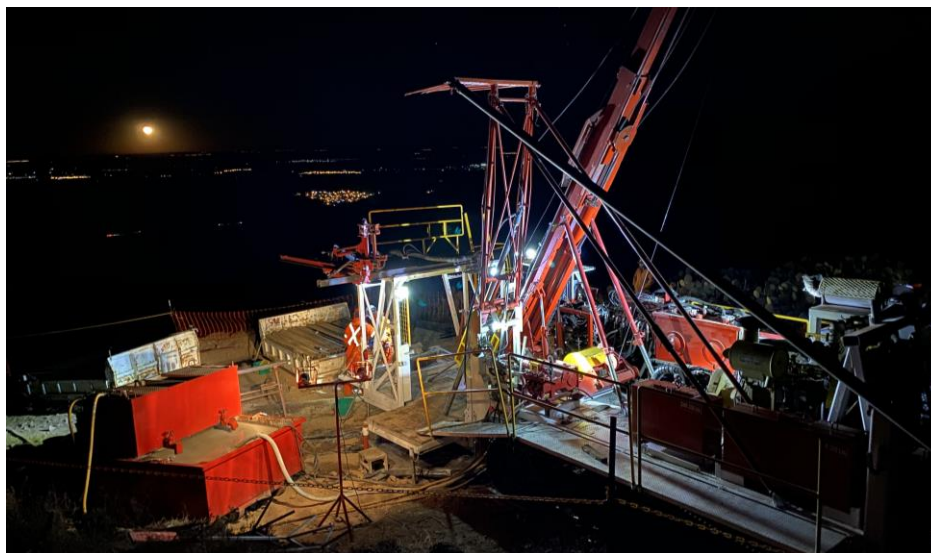
DDSA-21-36
 193.80 to 198.53 m
4.73 m @ 386 g/t AgEq
 1.31 g/t Au
 144.11 g/t Ag
 2.80% Pb
 3.60% Zn

STRATEGY TO ADD VALUE AT ZACATECAS DISTRICT PROJECTS

DISCOVERY-FOCUSED MINERAL
SYSTEMS GEOSCIENCE

FULLY-FINANCED EXPLORATION AND
RESOURCE DRILLING PROGRAM

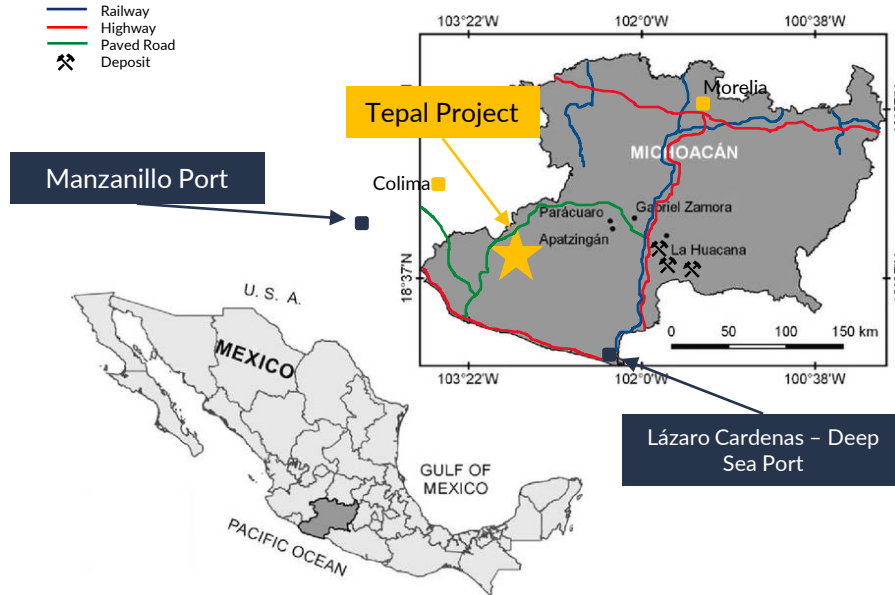
ADDING OUNCES TO AN
ADVANCED ASSET



- PHASE 1 REGIONAL DRILLING COMPLETED . 4750 METRES DRILLED (15 Holes) at LUCITA (13) and TAHURES (2).
- HIGH GRADE INITIAL RESULTS FROM MAIDEN DRILLING AT PALENQUE
- ONGOING DRILLING TO BE CONTINUED AT VETA GRANDE.

TEPAL GOLD-COPPER PROJECT

TECHNICALLY & FINANCIALLY DE-RISKED



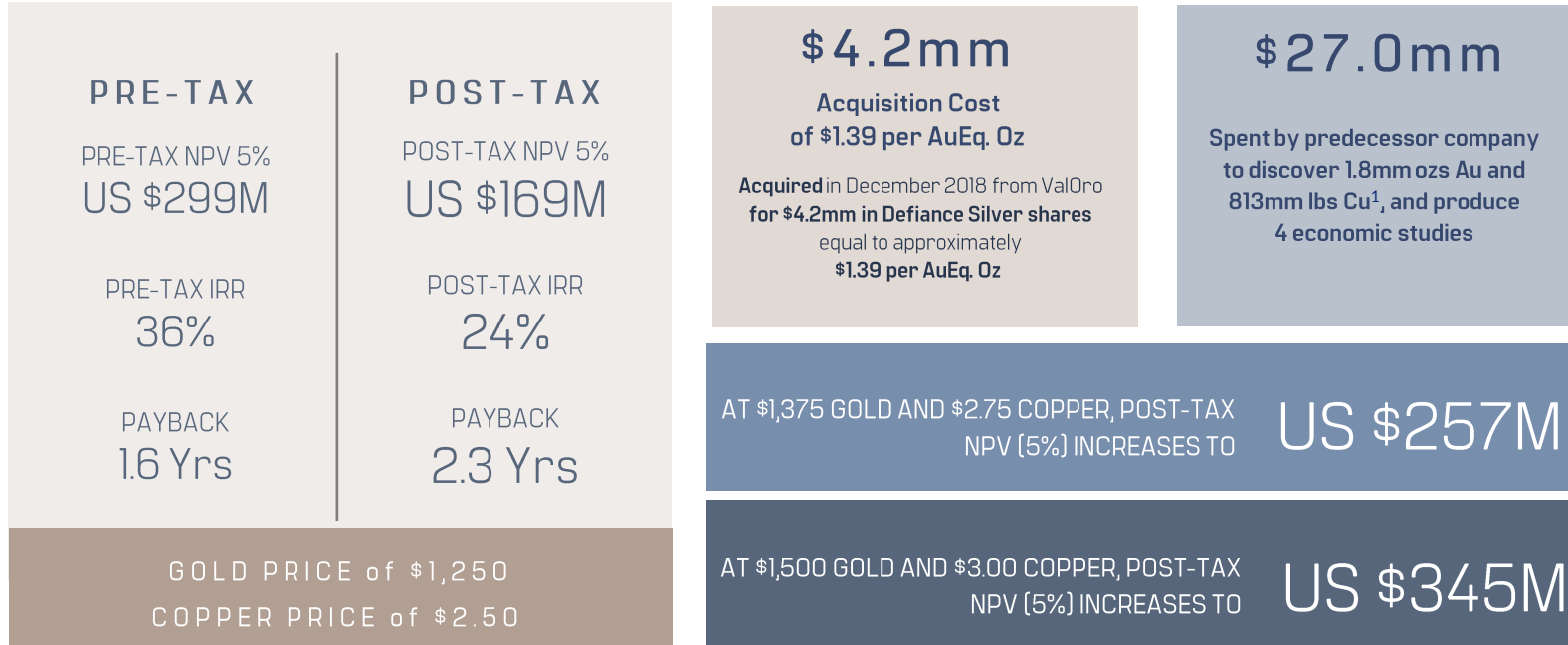
- Located in Michoacán near the border of Jalisco State.
- 100% ownership. Option to Acquire 2.5% NSR
- Current M&I resource: 1.8 mm Oz. Au & 813 mm lbs Cu⁺.
- C\$27M spent to-date. PEA completed in 2017
- Excellent infrastructure: road accessible with power, water, and port facilities.
- Surface rights currently held by private landowners.
- 50 megawatts available today (28 MW required for mine).

Significant Exploration Target: Un-tested, recently discovered High Grade Gold Feeder System

+Source: NI-43-101 Technical Report Preliminary Economic Assessment on the Tepal Project, Michoacan, Mexico, JDS Energy & Mining Inc; January 2017 (further details in the Appendix of this presentation)

TEPAL GOLD-COPPER PROJECT

ACCRETIVE ACQUISITION IN A DOWN MARKET



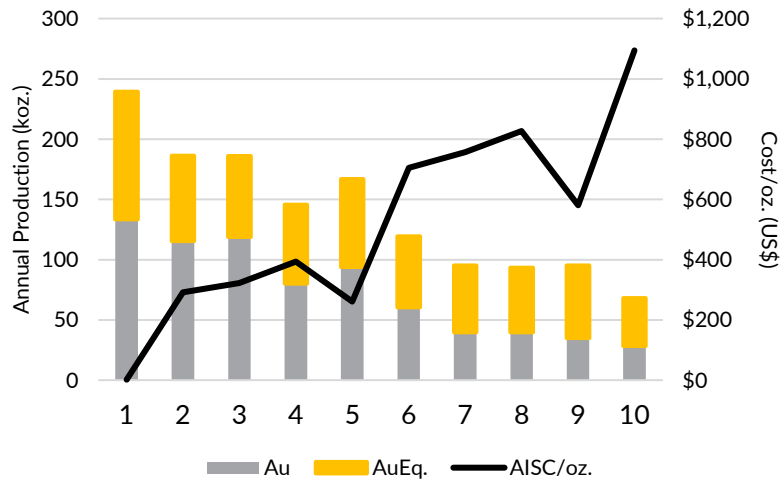
Using base case price assumptions of \$1,250/oz. gold, \$2.50/lb copper and \$18.00/oz. silver, Tepal has an estimated \$169 million after-tax NPV at a 5% discount rate, an attractive 24% after-tax IRR, and an after-tax payback period of 2.3 years. Base case LOM revenue split is 54% gold/43% copper/3% silver. The base case economic evaluation used metals prices that are close to current spot prices and near the median of current medium to long term analyst forecasts. After-tax economics were prepared using the following assumptions: a 2.5% Net Smelter Return (NSR) royalty, 0.5% Mexican royalty based on precious metals revenue, 7.5% Mexican royalty based on EBITDA, 12% annual depreciation rate, accumulated tax loss carry forward of US\$22.4 million, and a 30% Mexican income tax rate. Please see Valoro News Release dated January 29, 2017

1- Source: NI-43-101 Technical Report Preliminary Economic Assessment on the Tepal Project, Michoacan, Mexico, JDS Energy & Mining Inc; January 2017

TEPAL GOLD-COPPER PROJECT

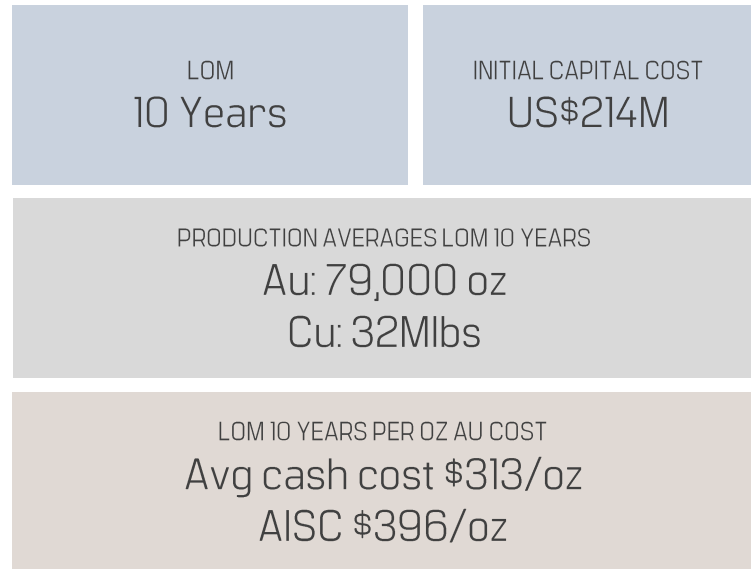
2017 PEA HIGHLIGHTS (USD)

LOM Production & Cash Costs



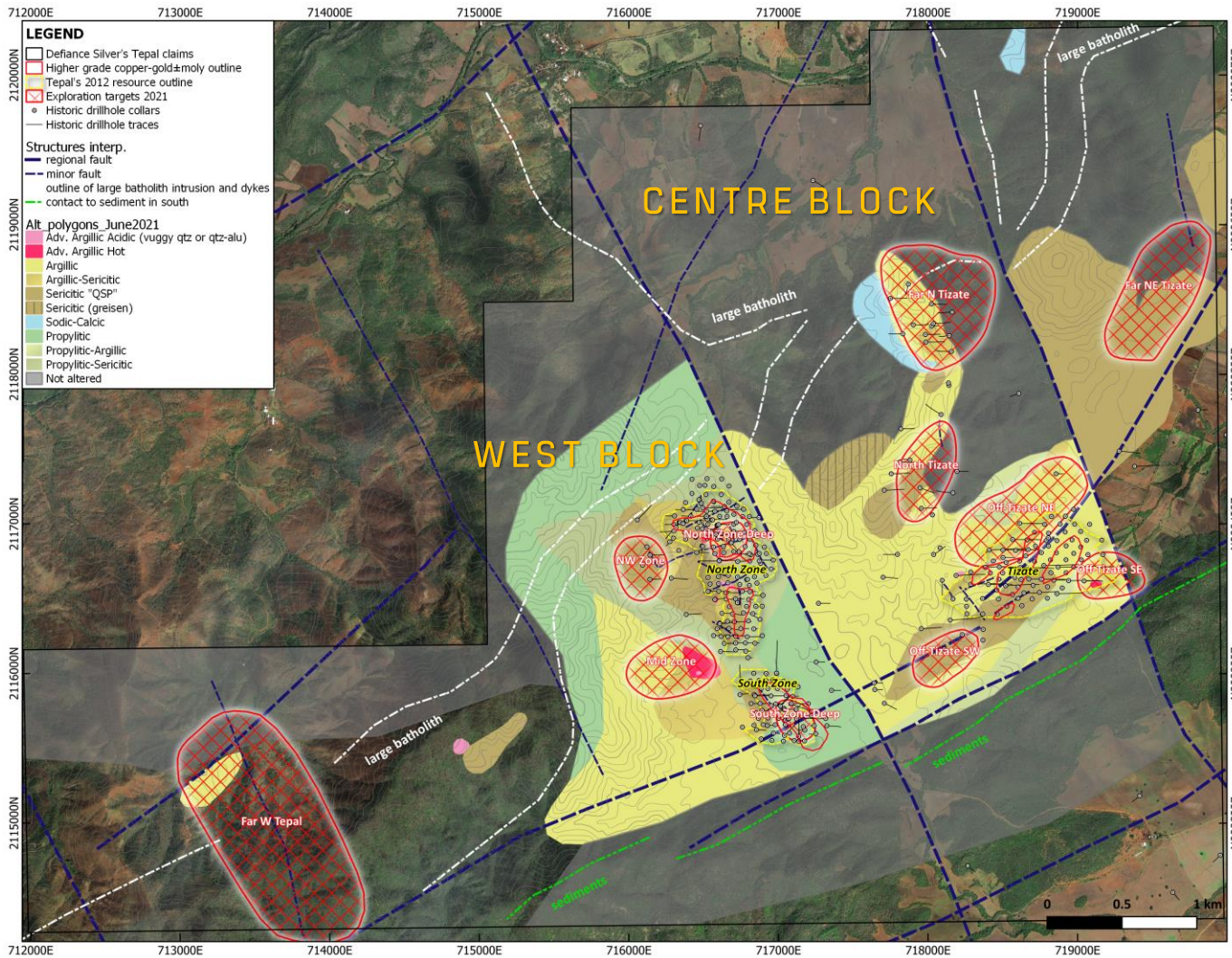
- (1) Using US\$1,250/oz. Au price, US\$2.50/lb. Cu price and US\$18.00/oz. Ag price
 (2) Cash cost includes all mining, milling & refining, transport, mine-level G&A, and royalty costs; net of byproduct credits

Production Summary



Using base case price assumptions of \$1,250/oz. gold, \$2.50/lb copper and \$18.00/oz. silver, Tepal has an estimated \$169 million after-tax NPV at a 5% discount rate, an attractive 24% after-tax IRR, and an after-tax payback period of 2.3 years. Base case LOM revenue split is 54% gold/43% copper/3% silver. The base case economic evaluation used metals prices that are close to current spot prices and near the median of current medium to long term analyst forecasts. After-tax economics were prepared using the following assumptions: a 2.5% Net Smelter Return (NSR) royalty, 0.5% Mexican royalty based on precious metals revenue, 7.5% Mexican royalty based on EBITDA, 12% annual depreciation rate, accumulated tax loss carry forward of US\$22.4 million, and a 30% Mexican income tax rate. Please see Valoro News Release dated January 29, 2017

Source: NI-43-101 Technical Report Preliminary Economic Assessment on the Tepal Project, Michoacan, Mexico, JDS Energy & Mining Inc; January 2017



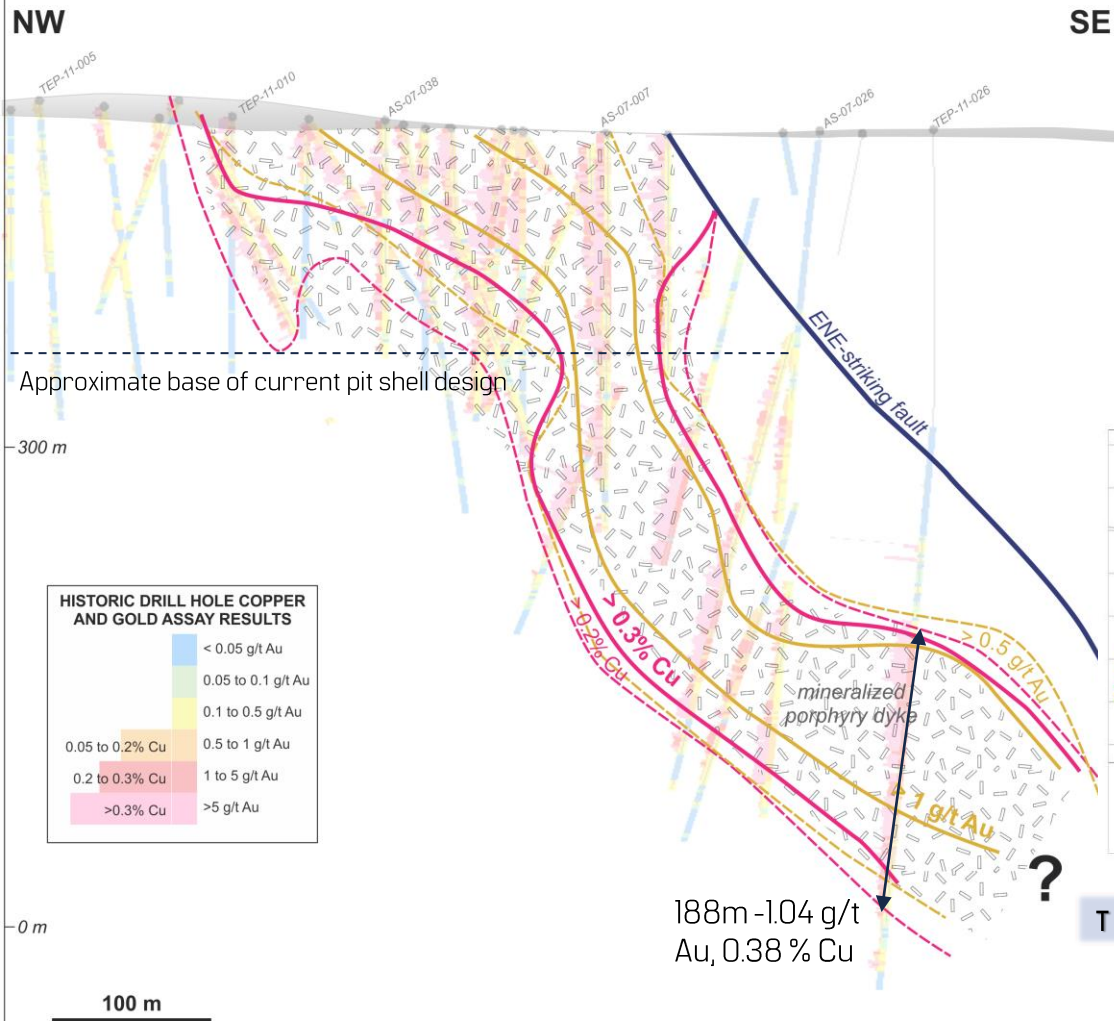
EXPLORATION UPSIDE AT TEPAL

- South Zone - Strong potential to increase Au and Cu resource through targeted exploration and systematic drilling.
- “Central Block” Recent work indicates the presence of high grade Au-Ag epithermal zones that remain largely untested.
- Drill targets exist both within and nearby current pit shell in the “North”, “South” and “Tizate” proposed pits.

South Zone – Strong grades and open at depth.

North Tizate /Off Tizate follow-up drilling planned.

SOUTH ZONE – TARGET: INCREASING RESOURCE BASE

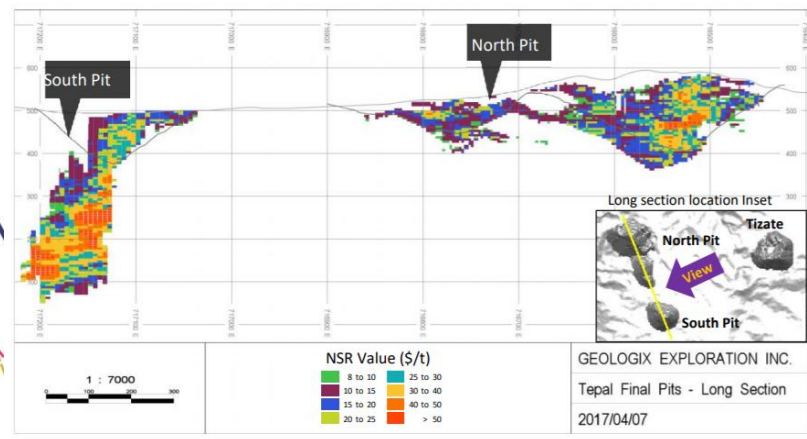


HISTORIC DRILL HOLE COPPER AND GOLD ASSAY RESULTS

< 0.05 g/t Au	< 0.05 g/t Au
0.05 to 0.1 g/t Au	0.05 to 0.1 g/t Au
0.1 to 0.5 g/t Au	0.1 to 0.5 g/t Au
0.05 to 0.2% Cu	0.5 to 1 g/t Au
0.2 to 0.3% Cu	1 to 5 g/t Au
>0.3% Cu	>5 g/t Au

188m -1.04 g/t Au, 0.38 % Cu

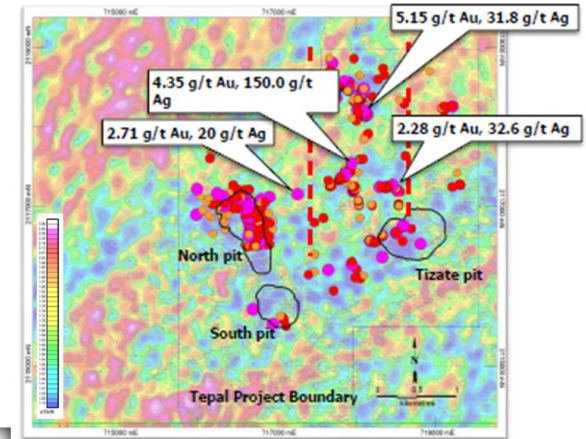
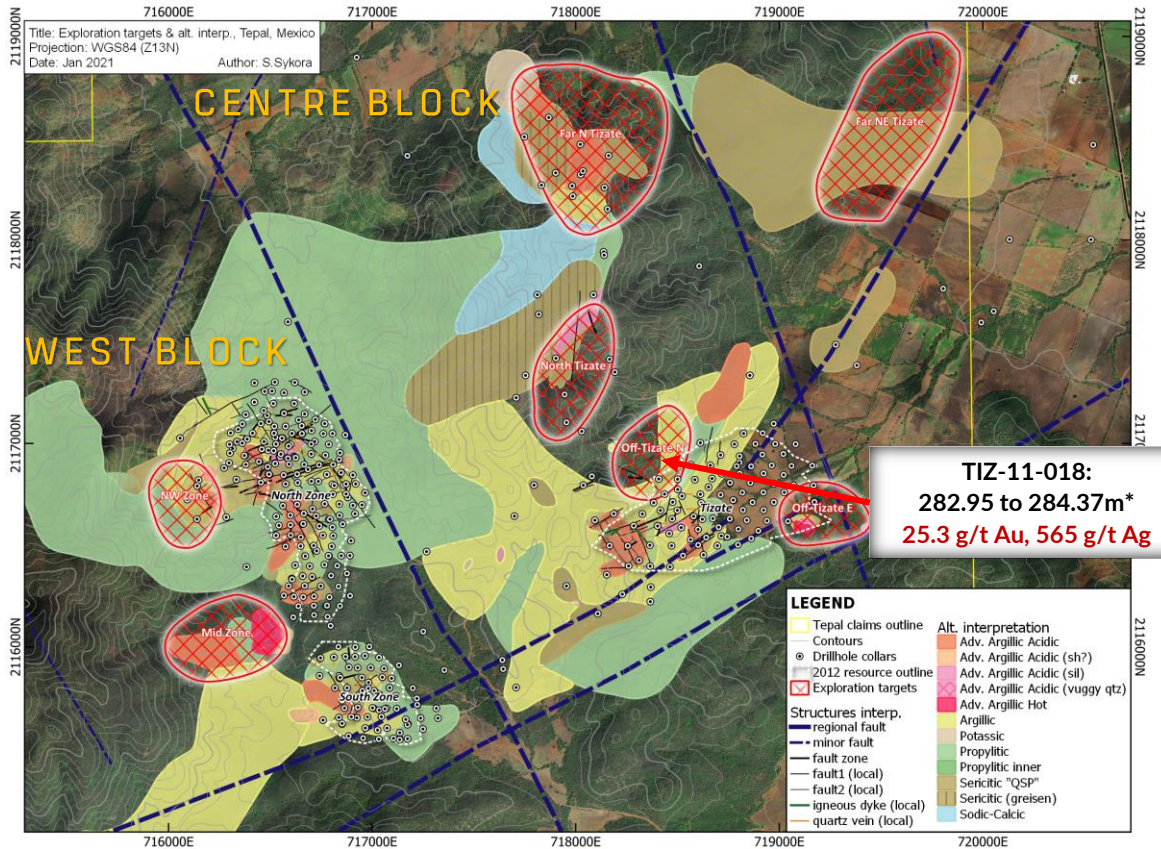
- Re-interpreted Geologic Model indicates porphyry system in south zone open at depth.
- Current exploration focused on high-grade Au/Cu mineralization found
 - At depth in South Pit
 - TEP-11-026: 309m-496m - 188m - 1.04 g/t Au, 0.38% Cu, 1.2 g/t Ag.
 - Along Strike of and at depth in North Pit testing Cu-Au bearing porphyry stocks.



Target Area

Source: NI-43-101 Technical Report Preliminary Economic Assessment on the Tepal Project, Michoacan, Mexico, JDS Energy & Mining Inc; January 2017

EXPLORATION UPSIDE IN CENTRE BLOCK/TIZATE



- 7 Zones identified. 12 holes planned in 5 Zones in addition to more surface exploration work.
- Recent work indicates the presence of Au-Ag epithermal zones that remain largely untested.

*True width not known

WHY INVEST IN DEFIANCE?

**Robust Resource Base
(1,2) and Significant
Exploration Potential**

**Proven Mine Finders:
Experienced** Management
team with decades of
exploration success leading
to M&A and Mine
Development

**Leverage to Precious
Metal Prices:**
Tepal Au Price Sensitivity
Zacatecas Resource
Upside

**Highly Aligned with
Shareholders:**
Management and Key
Shareholders aligned

**Drill-ready exploration
targets:** Systematic exploration
and reinterpretation
of historical work has generated
highly prospective targets to add
ounces and increase grade.



(1) Please see Defiance news release dated January 15, 2015 and Appendix for 43-101 Inferred Mineral Resource Estimate

(2) Please see ValOro news release dated January 19, 2017 and Appendix for PEA Assumptions



DEFIANCE
SILVER CORP

Defiance Silver Corp
Suite 2900 – 550 Burrard Street
Vancouver, BC, V6C 0A3 Canada

www.defiancesilver.com
info@defiancesilver.com
+1 (604) 343-4677



TSXV:DEF OTC:DNCVF WKN:A1JQW5

APPENDIX



INDUSTRY VETERANS WITH PROVEN SUCCESS

Chris Wright, BA
Chairman of the Board & CEO

Founder and Director of Windermere Capital, an investment firm and manager of two private investment funds: the Navigator and Breakaway Strategic Resource Funds, both of which are significant shareholders of Defiance.



Sherry Roberge, CPA, CA
CFO & Corporate Secretary

Member of the Institute of Chartered Professional Accountants of British Columbia and holds a Bachelor of Commerce degree from Royal Roads University as well as a Master of Professional Accounting from the University of Saskatchewan.



George Cavey, P.Geo
Vice-President, Exploration & Qualified Person

Former VP Exploration of Orko Silver, part of the team who discovered 264mm oz La Preciosa deposit sold to Coeur Mining in 2013 for \$380mm. 2004 recipient of the APEGBC C.J. Westermann Award. Canadian Professional Geoscientist Award, Canada's highest honor for Professional Geoscientist.



Douglas Cavey
Vice-President, Corporate Development; Sr. Technical Advisor

Over a decade of experience working on exploration, development, and mining projects for private, junior, and mid-tier mining companies.



Jennifer Roskowski, MSc
Principal Geologist

Global exploration geologist with a decade of experience working with one of the world's largest copper mining companies on global generative exploration and target definition.



Dunham L. Craig, P.Geo
Director

Past Director of Silvercrest Mines Inc., Past President and CEO and Director of Valoro/Geologix Exploration Inc., Vice President of Exploration and Corporate Development for Wheaton River Minerals.



Paul Smith, MSc
Director

Founding shareholder and past Finance Director of Ocean Partners Holdings Limited, one of the world's large traders of copper, zinc and lead concentrates.



James Bergin, BBA
Director

President and CIO of Hillhead Capital Inc. with 29 years of experience in capital markets with Credit Suisse, Barclays capital and Toronto Dominion Bank.



Ron Sowerby
Director

Director of Glentel Inc., which was purchased by Bell Inc. for \$594 million. Comptroller and CFO of TCG International Inc. (Trans Canada Glass Ltd.)



UNEXPECTED DEVELOPMENTS

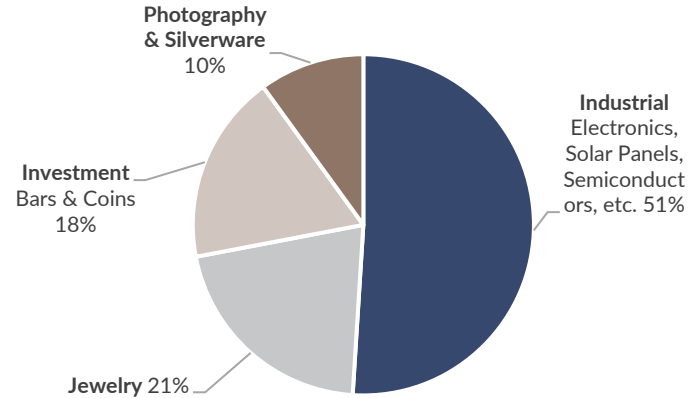
A CATALYST FOR SILVER

Global Silver Production by Country in 2018

Rank	Country	MMozs	
1	Mexico	196.6	Mandatory Mine Closures
2	Peru	144.9	
3	China	114.9	Disruption or Voluntary Closures
4	Russia	43.4	
5	Chile	42.1	
6	Bolivia	39.9	
7	Poland	39.6	
8	Australia	35.4	
9	United States	28.0	
10	Argentina	26.5	
11	Canada	24.8	
12	India	23.2	
13	Kazakhstan	19.5	
14	Sweden	14.6	
15	Indonesia	11.9	
16	Morocco	11.2	
17	Turkey	5.5	
18	Armenia	5.0	
19	Iran	3.6	
20	Dominican Republic	3.4	
21	Rest of World	21.7	
	World Total	855.7	
	Percent of Production Offline	>47.7	

- COVID-19 has significantly shifted the supply/demand picture for silver.
- As manufacturing activity ceased, industrial demand has weakened and will recover as the global economy resumes and recovers.
- While industrial demand has softened, the more severe economic contraction has been in the service sector rather than manufacturing.

Silver Demand by Industry



- Mine suspensions are offsetting weak industrial demand for silver, with production halted in countries that represent 47.7% of global silver production.
- Silver already had an 861.7mm oz deficit and mine supply has been declining since 2015.
- Over 70% of silver is mined as a by-product in polymetallic mines; a slowing economy will lower demand for base metals, putting pressure on prices and mines.
- Mine resumptions and ramp-up will be gradual and are uncertain, while global scrap supply has dropped 50% since 2011.

Source: Bloomberg, Sprott, The Silver Institute GFMS World Silver Survey

SAN ACACIO PROJECT

43-101 COMPLIANT INFERRED MINERAL RESOURCE ESTIMATE

43-101 Inferred Mineral Resource Estimate

		Ag (g/t)	Au (g/t)	AgEq (g/t)	Ag (ozs)	Au (ozs)	AgEq (ozs)
VETA G	2,150,000	192.43	0.19	204.66	13,302,000	10,000	14,147,000
VETA C	739,000	153.28	0.08	158.66	3,642,000	1,900	3,770,000
TOTAL	2,889,000	182.42	0.16	192.89	16,944,000	11,900	17,917,000

Source: NI-43-101 Technical Report and Resource Estimate, San Acacio Silver Deposit, Zacatecas Sate, Mexico, by Giroux and Cuttler; September 2014

The San Acacio Deposit has a 43-101 Inferred Mineral Resource Estimate available on www.sedar.com or www.defiancesilver.com. Using a silver equivalent ("AgEq")* cut-off grade of 100 grams tonne ("g/t"). Using a gold price of \$1270/ oz Au and silver price of \$19.60 the silver equivalent value would be silver content plus 65 times the gold content. (Note: total contained AgEq values may not add exactly because of rounding). Metallurgical recoveries are not taken into account.

Base Metals not included in initial inferred resource.

SAN ACACIO PROJECT

"POST-RESOURCE" DRILL RESULTS SUMMARY

Hole #	From (m)	To (m)	Length (m)*	Ag (g/t)	Au (g/t)	Cu %	Pb %	Zn %	AgEq (g/t)**
SAD14-01	134.00	142.10	8.10	222.12	0.22	0.01	0.20	0.53	268.13
SAD14-02	168.50	171.70	3.20	419.09	0.82	0.02	0.14	0.30	499.43
SAD14-03	05.00	213.30	8.30	42.89	0.92	0.04	1.87	2.44	278.33
SAD14-04	147.00	153.10	6.10	138.35	0.80	0.19	1.27	1.90	340.4
SAD15-07	136.40	140.00	3.60	211.49	0.14	0.01	0.11	0.20	234.17
SAD15-08	106.05	113.30	7.25	631.46	0.43	0.01	0.09	0.22	675.58
SAD15-10	331.5	333.6	2.1	283.31	0.17	0.01	0.38	0.70	337.8
SAD15-12	226.2	253.65	27.03	148.21	0.29	0.02	0.13	0.67	202.99
SAD15-13	261.00	271.00	10.00	171.22	0.08	0.01	0.27	0.42	204.65
SAD15-13	261.00	271.00	10.00	171.22	0.08	0.01	0.27	0.42	204.65
SAD15-15	209.82	213.00	3.18	285.04	0.02	0.01	0.05	0.17	296.30

*Please see Defiance [press release](#) of 25 Oct 2017 for further details and 2017 intercepts.

*True Widths are approximately 70% to 80% of each intersection **Reported for comparison only, with no assumptions regarding metal recovery or smelter payments. Prices used are Au: \$1210.50/ounce, Ag: \$16.33/ounce, Cu; \$2.80/pound, Pb; \$0.83/pound and Zn \$0.95/pound in US\$. 1 Gram = 0.03215074657 Troy ounce

TEPAL GOLD-COPPER PROJECT

43-101 COMPLIANT MINERAL RESOURCE ESTIMATE

Tepal Total Project Resource Estimate¹ – March 2012

Resource Classification	Tonnes	Au Grade (g/t)	Cu Grade (%)	Ag Grade (g/t)	Contained Au (oz)	Contained Cu (lbs)
Measured	34,100,000	0.48	0.25	0.95	528,000	185,000,000
Indicated	153,700,000	0.26	0.19	1.67	1,276,000	628,000,000
Measured & Indicated	187,800,000	0.30	0.20	1.54	1,804,000	813,000,000
Inferred	35,700,000	0.16	0.15	1.68	182,000	120,000,000

Mineral Resource (Mine Diluted) Included in PEA Mine Plan¹²

Resource Classification	Tonnes	Au Grade (g/t)	Cu Grade (%)	Ag Grade (g/t)	Contained Au (oz)	Contained Cu (lbs)
Measured	26,800,000	0.51	0.25	0.95	438,000	150,000,000
Indicated	61,700,000	0.28	0.20	1.58	550,000	269,000,000
Measured & Indicated	88,500,000	0.35	0.21	1.39	988,000	419,000,000
Inferred	2,000,000	0.19	0.18	2.73	12,000	8,000,000

1. The resource states in the table conforms to CIM guidelines for reasonable potential for economic extraction and is not to be confused as reserves. Resource numbers above are rounded to the nearest 100,000 tonnes, 1,000 oz Au and 1,000,000 lbs Cu.
2. The mineral resource stated in the table conforms to CIM guidelines for reasonable potential for economic extraction and is not to be considered mineral reserves.
3. NSR cut-off for sulphide material is \$8.19/tonne milled and for oxide material is \$10.13/tonne milled.

Source: NI-43-101 Technical Report Preliminary Economic Assessment on the Tepal Project, Michoacan, Mexico, JDS Energy & Mining Inc; January 2017

TEPAL GOLD-COPPER PROJECT

PROJECT PROFILE

Flotation Concentrate & Tails Cyanidation Recovery Estimates

	Flotation	Tails Cyanidation	Combined Recovery
Tepal Recovery			
Copper	88.2%		88.2%
Gold	62.4%	16.5%	78.9%
Silver	27.4%	15.5%	40.2%
Tizate Recovery			
Copper	85.9%		85.9%
Gold	55.0%	16.0%	74.0%
Silver	59.6%	18.5%	78.1%

Oxide Leach Recovery Estimates

Tepal Recovery	
Gold	83.2%
Silver	63.3%
Tizate Recovery	
Gold	75.3%
Silver	55.9%

1. Au = gold, Cu = copper, Ag = silver, Mo = molybdenum, g/t = grams per tonne, % = percent, oz. = ounces, lbs. = pounds. Resource numbers above are rounded to nearest 100,000 tonnes, 1,000 oz Au, 1,000,000 lbs Cu and 1,000 oz. AuEq ²AuEq = gold equivalent and is calculated using gold and copper only using \$1000 Au, \$2.75 Cu metal prices (AuEq = (lbs. Cu*\$2.75/\$1000) + Au oz.). All dollar values stated are \$USD
2. The mineral resource stated in the table conforms to CIM guidelines for reasonable potential for economic extraction and is not to be considered mineral reserves.

Source: NI-43-101 Technical Report Preliminary Economic Assessment on the Tepal Project, Michoacan, Mexico, JDS Energy & Mining Inc; January 2017

TEPAL GOLD-COPPER PROJECT

PROJECT PROFILE

2017 PEA Assumptions

Sustaining Capital Costs	\$86.7
Mine Life	9.8 years
Total Material Mined	142.9 Mt
Strip Ratio	0.6 : 1
Average Plant Throughput (Sulphide + Oxide)	9.6 Mtpa
Average Au Sulphide Head Grade	0.33 g/t
Average Cu Sulphide Head Grade	0.21%
Average Au Oxide Head Grade	0.45 g/t
LOM Average Au Sulphide Recovery (combined Flotation & CIL)	77%
LOM Average Cu Sulphide Recovery	87%
LOM Average Au Oxide Recovery	81%

(1) Cash cost includes all mining, milling & refining, transport, mine-level G&A, and royalty costs

2017 PEA Highlights

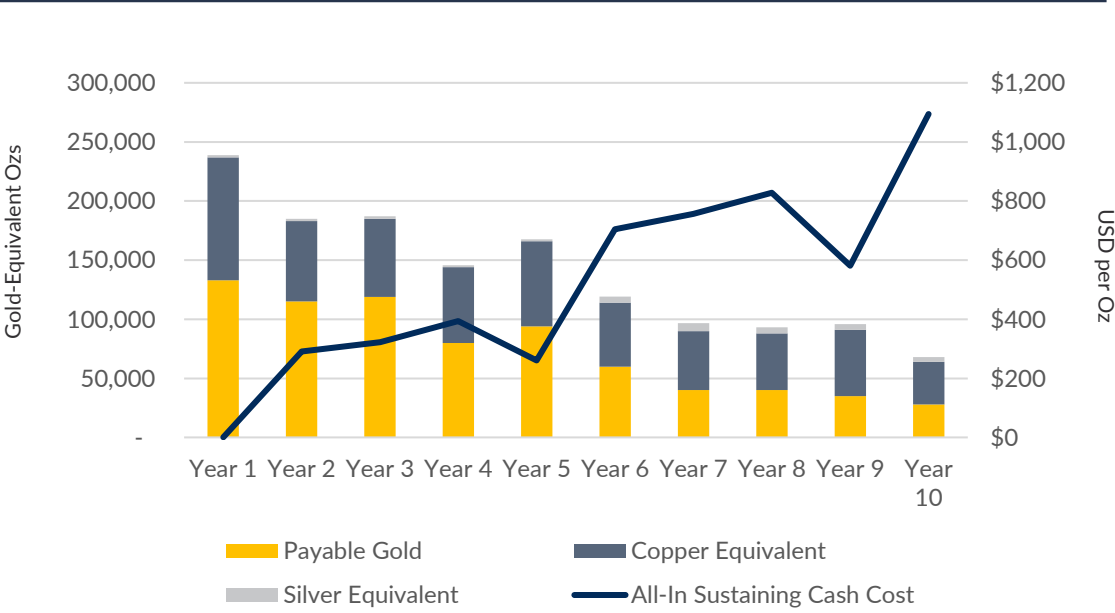
% Δ in Base Case Metals Prices	-10%	0%	10%
Gold Price (US\$/oz)	\$1,125	\$1,250	\$1,375
Copper Price (US\$/lb)	\$2.25	\$2.50	\$2.75
Silver Price (US\$/oz)	\$16.20	\$18.00	\$19.80
All-In Sustaining Costs (net of byproducts)			
Gold (US\$/oz)	\$497	\$396	\$296
Copper (US\$/oz)	\$0.69	\$0.38	\$0.07
Pre-Tax			
NPV(5%) (US\$ millions)	\$165.6	\$299.4	\$433.3
IRR (%)	25%	36%	46%
Payback Period (years)	2.2	1.6	1.3
After-Tax:			
NPV(5%) (US\$ millions)	\$77.5	\$169.4	\$257.2
IRR (%)	15%	24%	31%
Payback Period (years)	3.0	2.3	1.9

Source: NI-43-101 Technical Report Preliminary Economic Assessment on the Tepal Project, Michoacan, Mexico, JDS Energy & Mining Inc; January 2017

TEPAL GOLD-COPPER PROJECT

PROJECT PROFILE

2017 PEA Production by Year & Cost Profile



(1) Using US\$1,250/oz. Au price, US\$2.50/lb. Cu price and US\$18.00/oz. Ag price
 (2) Cash cost includes all mining, milling & refining, transport, mine-level G&A, and royalty costs; net of byproduct credits

Source: NI-43-101 Technical Report Preliminary Economic Assessment on the Tepal Project, Michoacan, Mexico, JDS Energy & Mining Inc; January 2017