



# NORTHERN SUPERIOR RESOURCES

## Consolidating the Chibougamau Camp in Quebec

November 2022

TSXV: SUP / OTCQB: NSUPF



## Safe Harbour Statement

Cautionary Note Regarding Forward-Looking Statements: This Presentation contains forward-looking statements that involve risks and uncertainties, which may cause actual results to differ materially from the statements made. When used in this document, the words “may”, “would”, “could”, “will”, “intend”, “plan”, “anticipate”, “believe”, “estimate”, “expect” and similar expressions are intended to identify forward-looking statements. Such statements reflect our current views with respect to future events and are subject to such risks and uncertainties. Many factors could cause our actual results to differ materially from the statements made, including those factors discussed in filings made by us with the Canadian securities regulatory authorities. Should one or more of these risks and uncertainties, occur or should assumptions underlying the forward looking statements prove incorrect, actual results may vary materially from those described herein as intended, planned, anticipated, or expected. We do not intend and do not assume any obligation to update these forward-looking statements, except as required by law. Shareholders are cautioned not to put undue reliance on such forward-looking statements.



# Directors and Management



## SIMON MARCOTTE

President, CEO and Director

- **Founder, President & CEO of Royal Fox Gold until its acquisition by Northern Superior**
- Nearly 25 years of experience, including with CIBC World Markets, Sprott & Cormark Securities, and Officer or Director of Arena Minerals, Belo Sun Mining, and Alderon Iron Ore, and Mason Graphite



## VICTOR CANTORE

Executive Chairman

- President and CEO of **AMEX Exploration Inc.**
- Over 25 years of advisory and leadership experience and serves on the boards of various companies both private and public



## RODNEY BARBER

Senior Vice President Exploration

- Professional Geologist P.Geo with over 35 years experience in exploration and mining
- Previously employed as the Geology Superintendent at Barrick-Hemlo, Ontario and successfully added 4.5 M oz of gold reserves



## ADREE DELAZZER

Vice President Exploration

- Professional Geologist P.Geo with over 15 years experience in exploration and mining
- Formerly Superintendent of Geology for Kirkland Lake, Detour Lake Gold Mine and Exploration Manager responsible for near mine and greenfield exploration programs



## GORDON MORRISON

Director and Technical Committee

- Nearly 50 years of experience in mining and exploration including Inco Limited, KGHM International and most recently with TMAC Resources
- Responsible for the discovery of 13 major deposits, 6 of which are producing mines, and 4 are in the feasibility stage



## CATHARINE FARROW

Technical Committee Member

- Dr. Farrow is a Professional Geoscientist (APGO) with over 25 years of mining industry experience.
- CEO, Director and Co-Founder of TMAC Resources and serves as a Director of Franco-Nevada, Centamin PLC, Eldorado Gold and is Chair of the Board of Exiro Minerals Corp



# Directors and Management



## MICHAEL GENTILE

### Director

- Over 15 years as a money manager at Formula Growth Limited focused on mining with growth over \$650 million
- Active mining investors and advisor to Radisson Mining Resources and a member of the board of Roscan Gold Corporation



## Tom Morris

### Chair of Technical Committee

- Dr. Morris is a Professional Geologist with over 30 years experience and previously was the President and CEO of Northern Superior
- In 2012 was awarded the Quebec Prospector of the Year Award by the Association de L'Exploration Minière du Québec.



## DAVID BEILHARTZ

### Technical Committee Member

- Professional Geologist P.Geo with over 35 years experience in exploration and mining
- Formerly Vice-President Exploration of Trelawney Mining and Exploration, Vice-President, Exploration of Lakeshore Gold and Chief Geologist for Holmer Gold Mines



## FRANK GUILLEMETTE

### Director

- Entrepreneur with over 20 years experience in finance and venture capital
- Advanced the Philibert Project until its sale to Royal Fox and completed other transactions including the Black Dog project to Osisko Mining and the Monster Lake Project to IAMGold



## FRANÇOIS PERRON

### Director

- Currently President and CEO of Lucky Minerals
- 30 years experience in various roles including portfolio manager NBC Alternative Investments and various resource funds, VP Corporate Development President, CEO and director for various TSX Venture Exchange listed companies

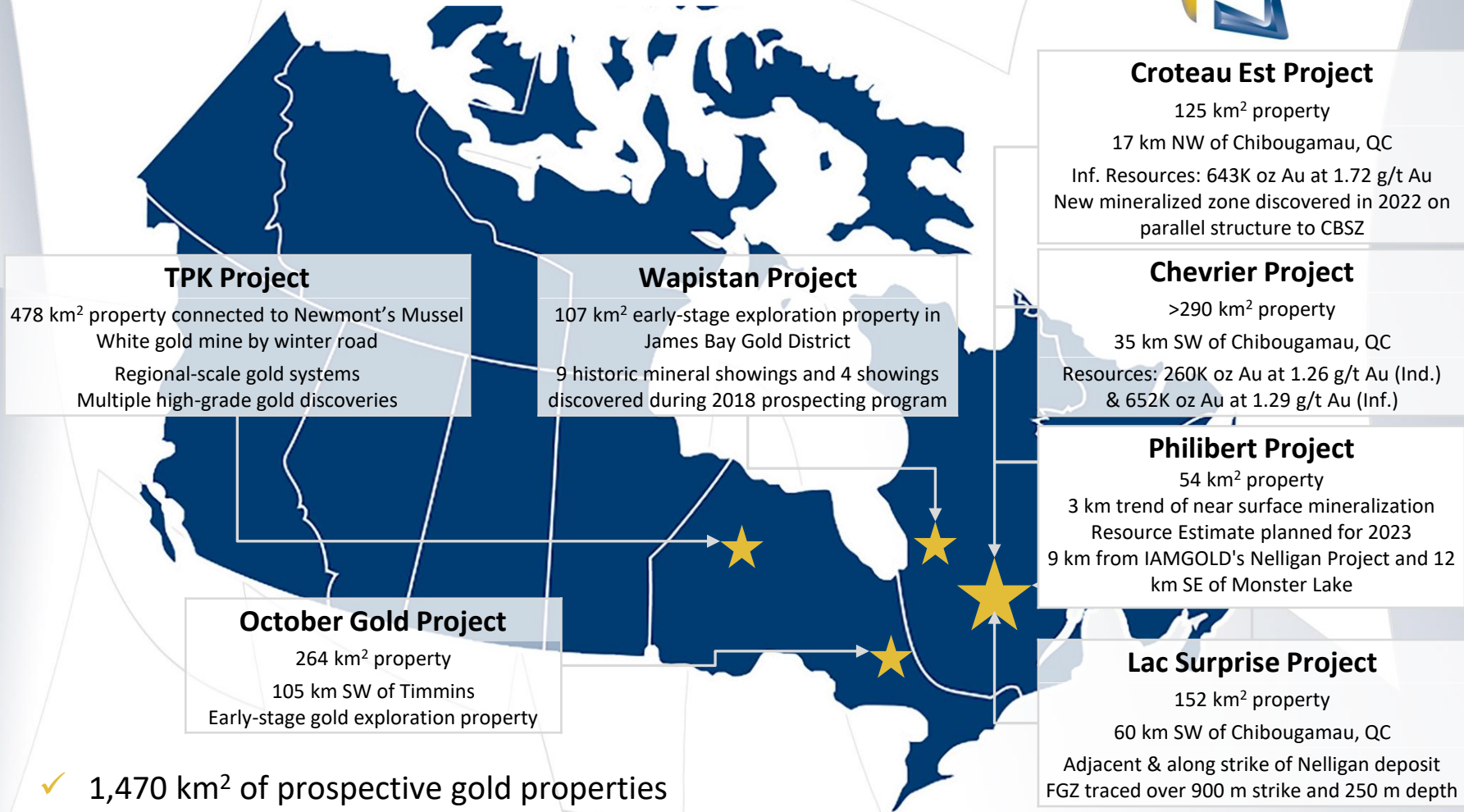


## ANDREW FARNCOMB

### Director

- Founder of Cairn Merchant Partners LP and founder and director of Contact Gold Corp and Cairn Memory Care Fund GP
- Formerly a Partner and Investment Banking professional at Paradigm Capital Inc. and board member of several other TSX and TSX Venture Exchange listed companies

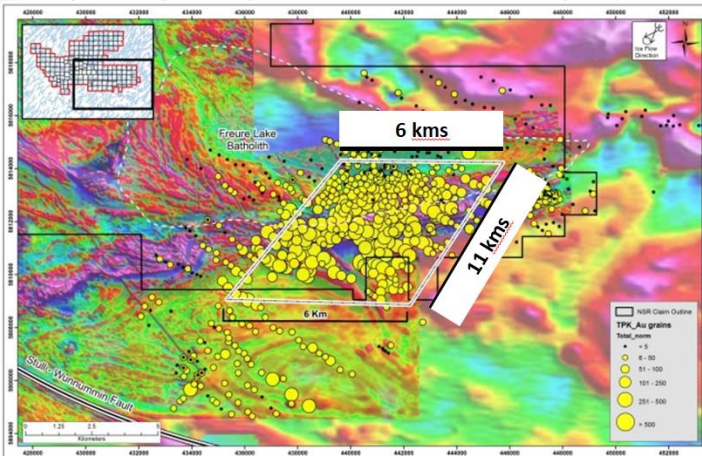
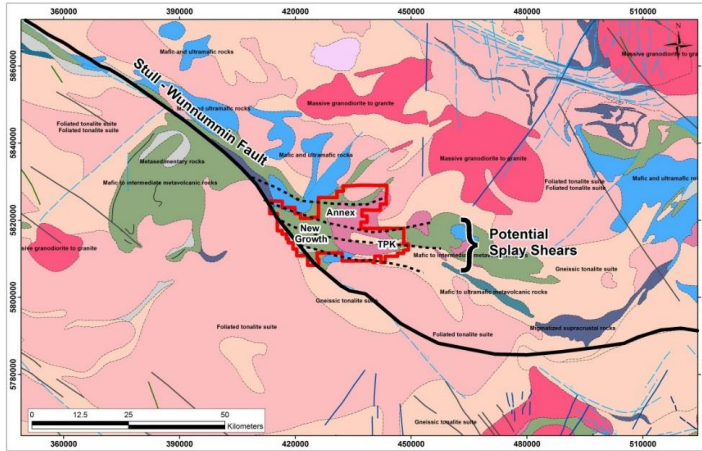
# Larger & More Diversified Canadian Gold Explorer



- ✓ 1,470 km<sup>2</sup> of prospective gold properties
- ✓ Low-risk, tier 1 mining jurisdictions (Quebec & Ontario)
- ✓ Within major gold camps (Chapais-Chibougamau, Timmins, Musselwhite and James Bay)
- ✓ Early-to-advanced stage gold exploration projects

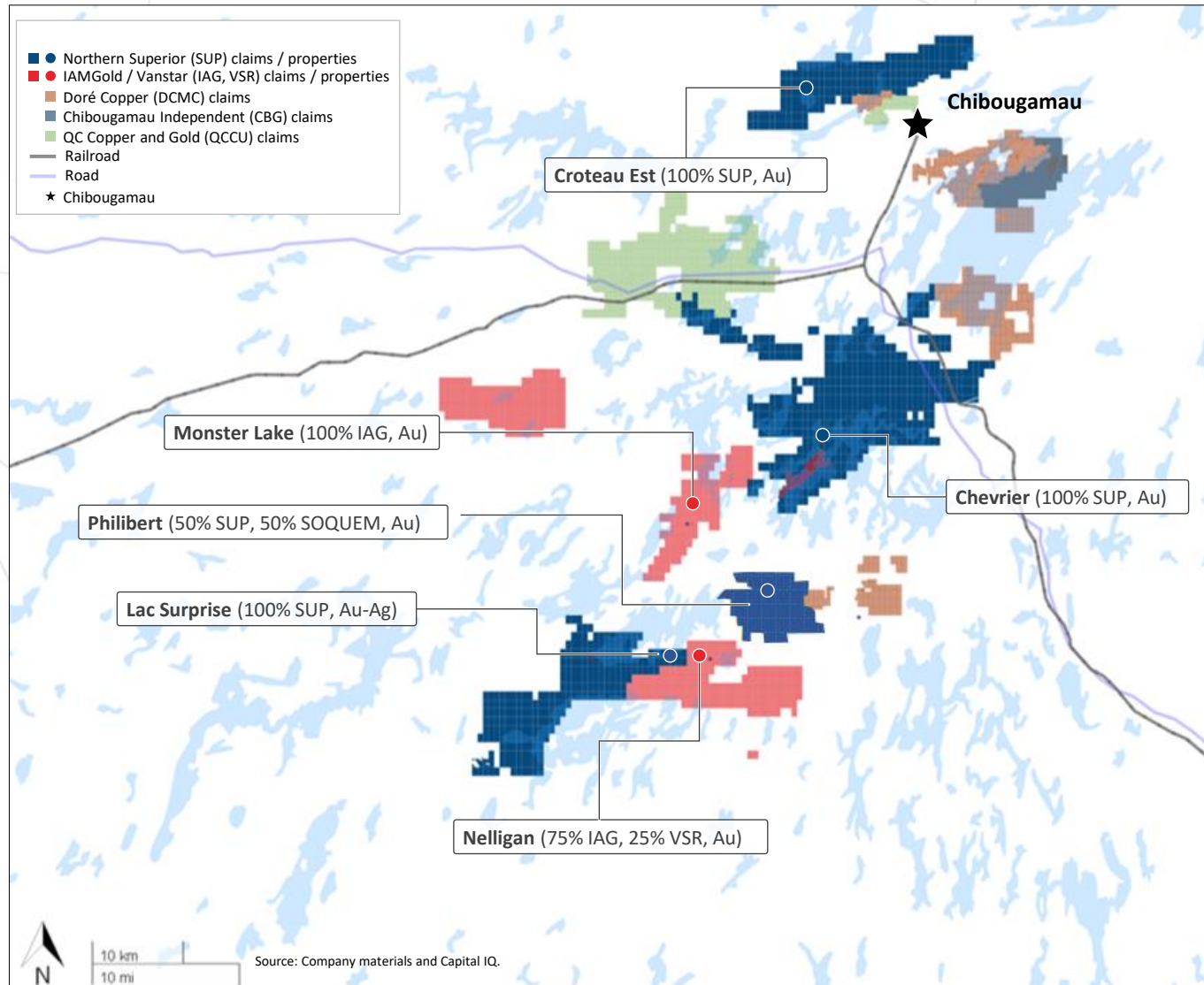


# TPK GOLD – District Scale Opportunities....



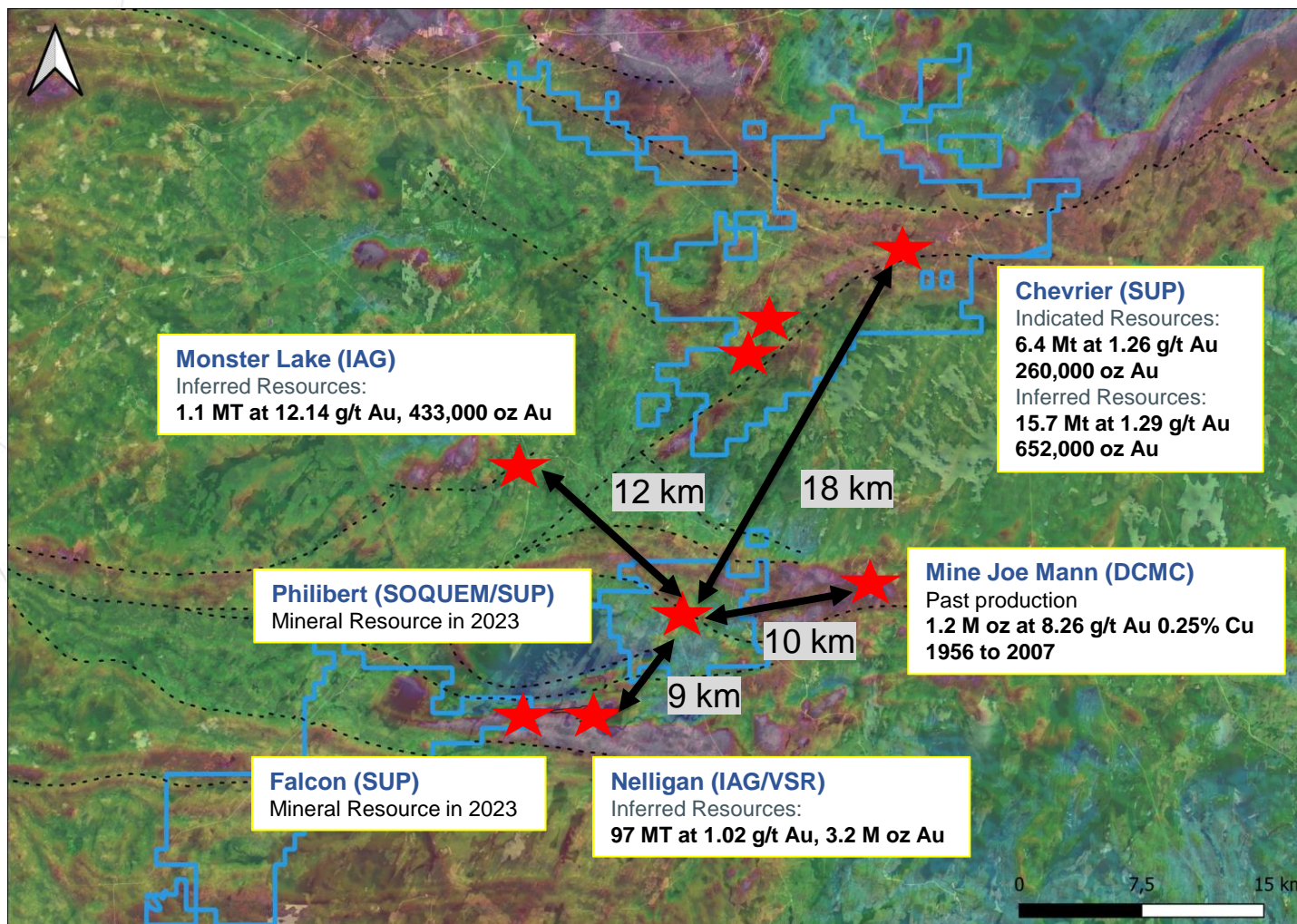
- ✓ Comparable Structural Setting to Malarctic- Val d'Or gold district on splays off major bend, Larder Lake-Cadillac Fault.
- ✓ One of the largest gold in till dispersal anomalies in the world - normally indicates a large gold system or district
- ✓ Most gold dispersal trains 200m x 3kms – property host two distinct anomalies the largest being 6km\*11Km
- ✓ Mineralized, large, tabular boulders returning assay values as high as **727 g/t gold, 111 g/t silver, and 4.05 % copper**
- ✓ Multiple, significant gold discoveries already made, including: **25.87 g/t gold 13.45 m (TPK-10-004)**

# Establishing the Preeminent Gold Explorer / Developer in the Chapais-Chibougamau Gold Camp





# Chapais-Chibougamau Gold Camp Guerchenville Fault Zone



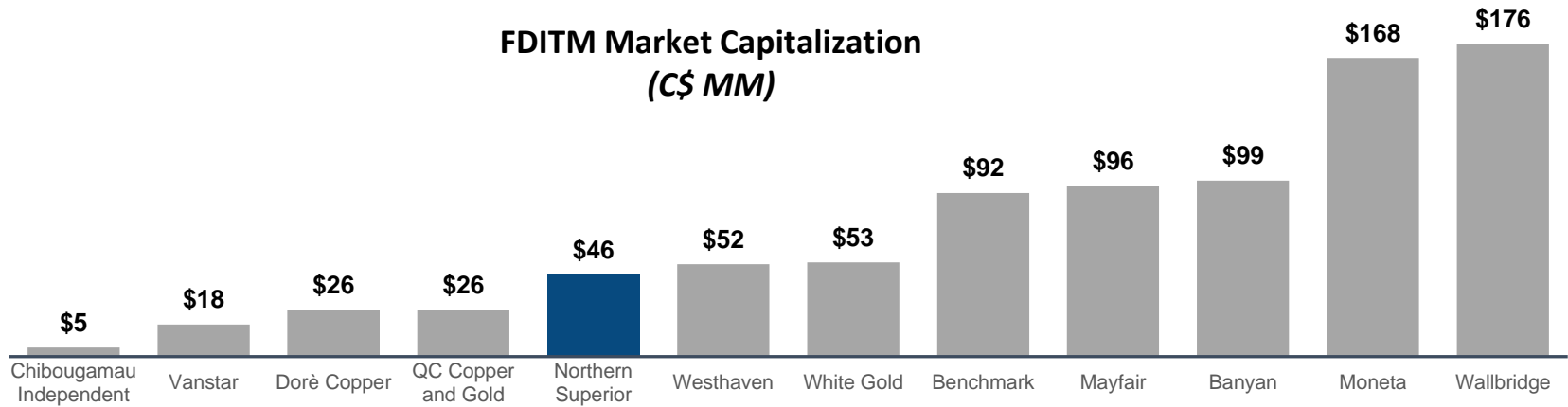
Monster Lake – NI 43-101, May 2018; Nelligan NI 43-101, October 2019; Chevrier NI 43-101, February 2019; Joe Mann Cumulative Production in 2001, SIGEOM



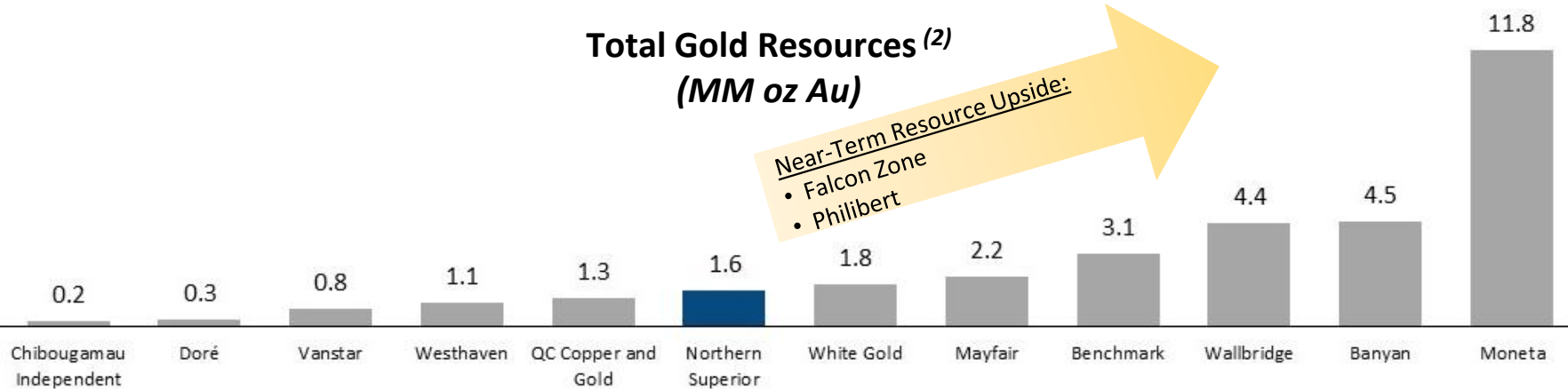
# Pro Forma: Relative Valuation and Positioning



**FDITM Market Capitalization  
(C\$ MM)**



**Total Gold Resources (2)  
(MM oz Au)**



Source: Company materials.

(1) Based on Base Purchase Price only.

(2) Attributable gold resources based on equity ownership.



# Premier Location for Exploration Investment

- ✓ Quebec Plan Nord Rebates with 43.65% total rebate
- ✓ Refunded by the Government of Quebec for each HARD DOLLAR (NON-FLOW THROUGH) SPENT IN EXPLORATION
- ✓ 38.75% Refund to non-producing companies + 4.90% Refund from the “Refundable Duties Credit for loss”<sup>1</sup>



Note 1: Tax credit of 16% is 50% eligible -> 8% minus the 38.75% of this 8% = 4.90%

# Key Transaction Rationale



## The Dominant Independent Gold Explorer in the Chapais-Chibougamau Gold Camp

- Largest consolidated land package (> 62,000 ha)
- Largest gold resource inventory (>1.5 MMoz Au)
- Synergies from consolidated exploration assets and activities



## Significant Near-Term Exploration Upside Potential

- **Philibert:** 9 km from IAMGOLD's Nelligan Project, possibly trending towards Philibert, 3 km near surface strike length to mineralization, Mineral Resource expected in 2023
- **Lac Surprise** (Falcon Gold Zone) which has defined 900m of strike length and 340m of vertical continuity with all 28 holes drilled so far intersecting gold mineralization



## Ontario Asset Spin Off Strategy – INCLUDING TPK

- Instant Value Creation, with potential Dividend to Shareholders
- Entity Focused on Asset with World Class Potential



## Strong Capital Markets Capability and Unique Technical Expertise

- Strong Shareholders and Strong Capital market Reach
- Depth of Technical Committee Unparalleled for a Junior Company



NORTHERN  
SUPERIOR  
RESOURCES

# PHILIBERT

## Project Overview



TSX:SUP/ OTCQB:NSUPF

# Philibert Project Overview

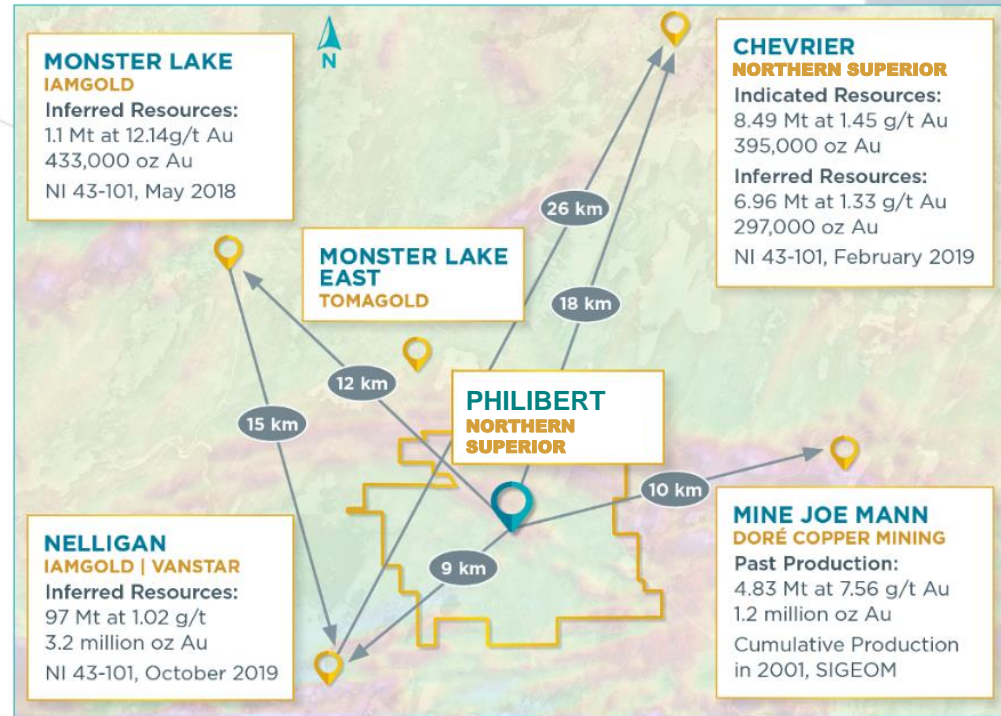


**\$13,000,000** Spent on Exploration to Date  
 Building on **60,000 METRES** of Historical Drilling (prior to 2015)  
 More than **15,000 METRES** over **120 HOLES** completed in 2022  
**RESULTS FROM 59 OUT OF 120 HOLES REMAIN PENDING**

~ 9 km from the **NELLIGAN** project of **IAMGOLD**  
 ~ 12 km from the **LAC SURPRISE** of **NORTHERN SUPERIOR**

**60 KM** southwest of **CHIBOUGAMAU**;  
 project accessible year-round by road

**110 MINING TITLES** covering ~5,392.57 ha optioned from **SOQUEM** <sup>(1)</sup>



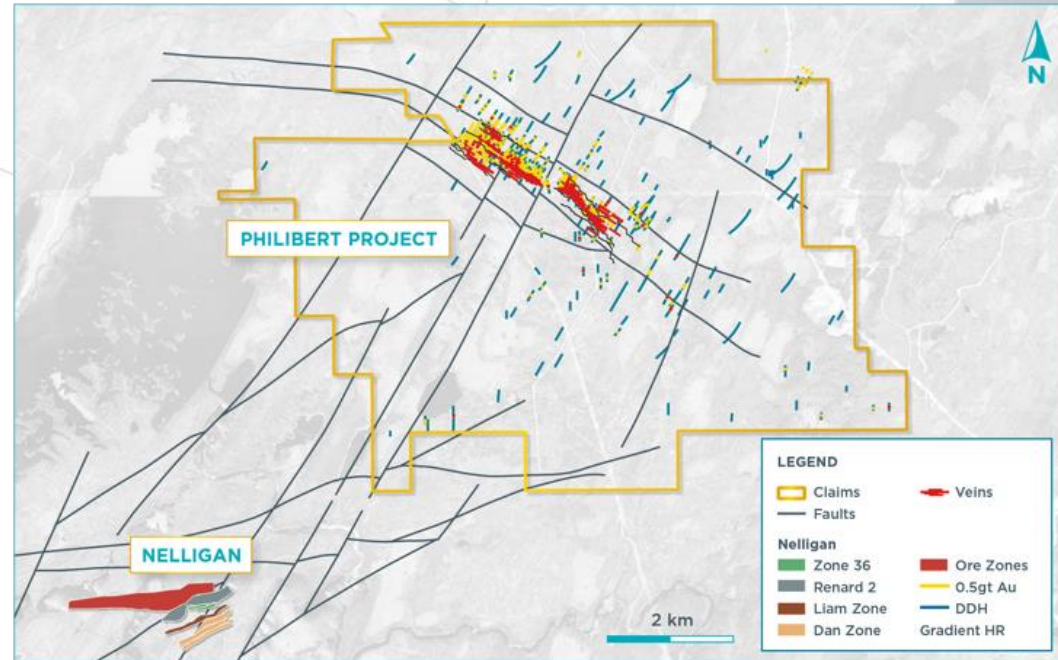
(1) Pursuant to Philibert option agreement, Royal Fox can earn an initial 50% interest in the property by spending C\$3.5 MM on eligible expenditures (completed but to be approved by Soquem), an additional 25% interest (for a cumulative total of 75%) by spending a further C\$2 MM (~C\$0.5 MM completed but to be approved by Soquem) and an additional 25% interest (for a cumulative total of 100%) through the payment of C\$3.5 MM.

# Philibert Project Overview



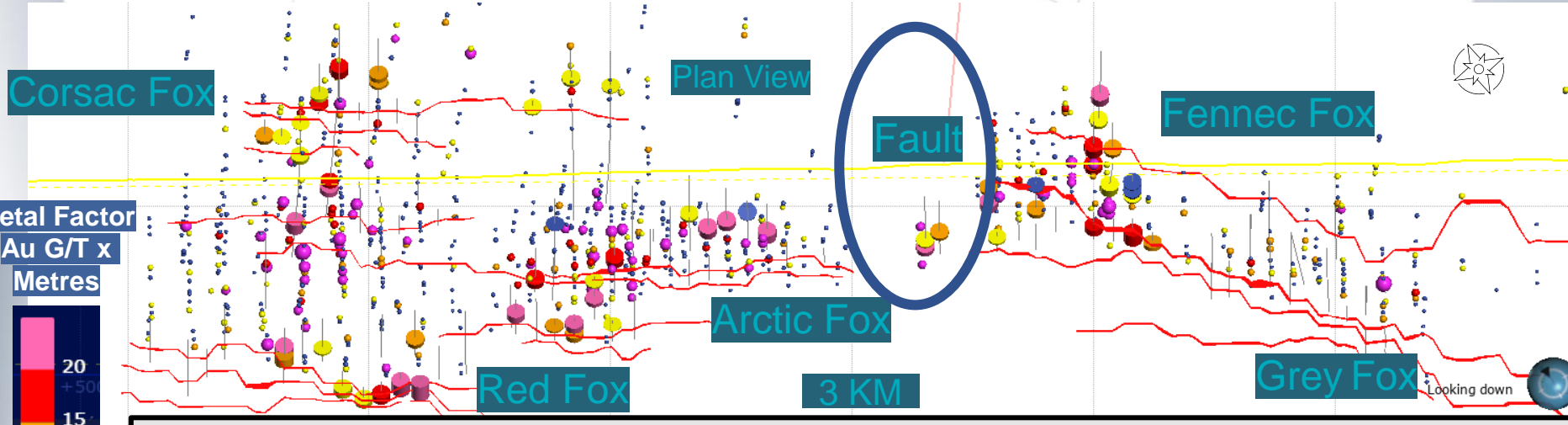
## PHILIBERT PROJECT

- **Highlight Historical Holes:**
  - 17.9m @ 9.14 g/t Au from 282m
  - 56.5m @ 2.43 g/t Au from 32m
  - 26.55m @ 3.94 g/t Au from 340.3m
- **Highlight Holes from 2022:**
  - 21.5m @ 2.29 g/t Au from 78.5m
  - 35.6m @ 1.69 g/t Au from 26.5
  - 15.0m @ 3.86 g/t Au from 198.0m

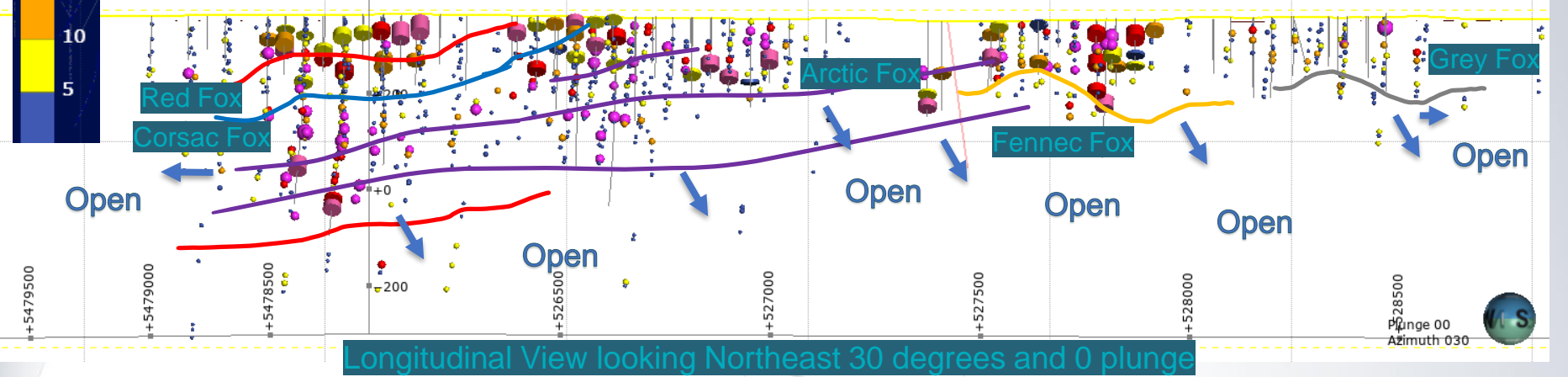
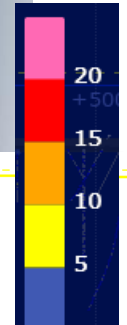


**Recent results in the FAULT AREA indicate possibility of linking the mineralization of the northwest and southeast zones**

# Initial Mineralization of 3 km

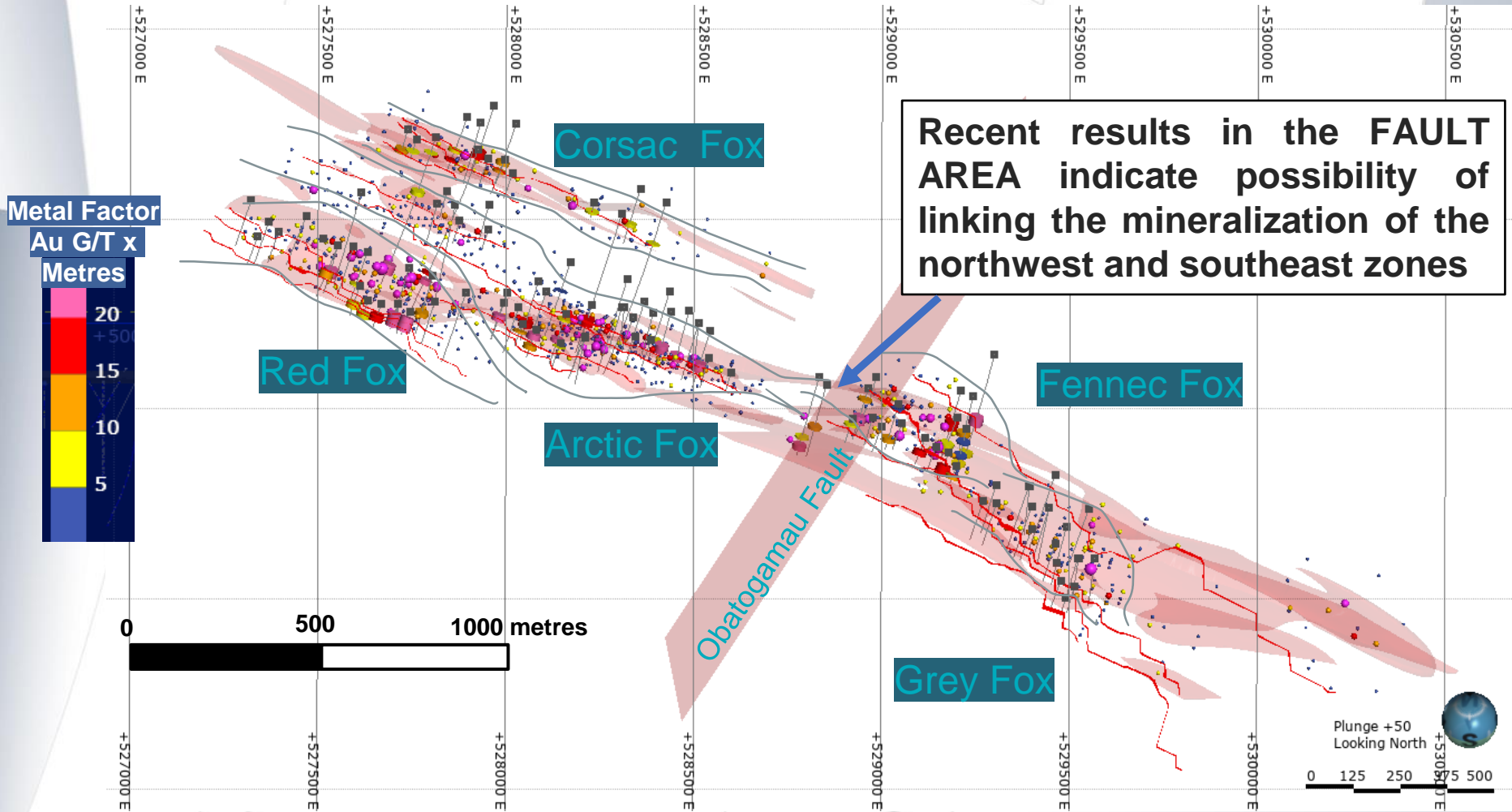


Metal Factor  
Au G/T x  
Metres



Grey Fox Zone 2022 Drill Results – not represented on slide (not reported) at time of presentation

# Initial Mineralization of 3 km



Grey Fox Zone 2022 Drill Results – not represented on slide (not reported) at time of presentation



# LAC SURPRISE

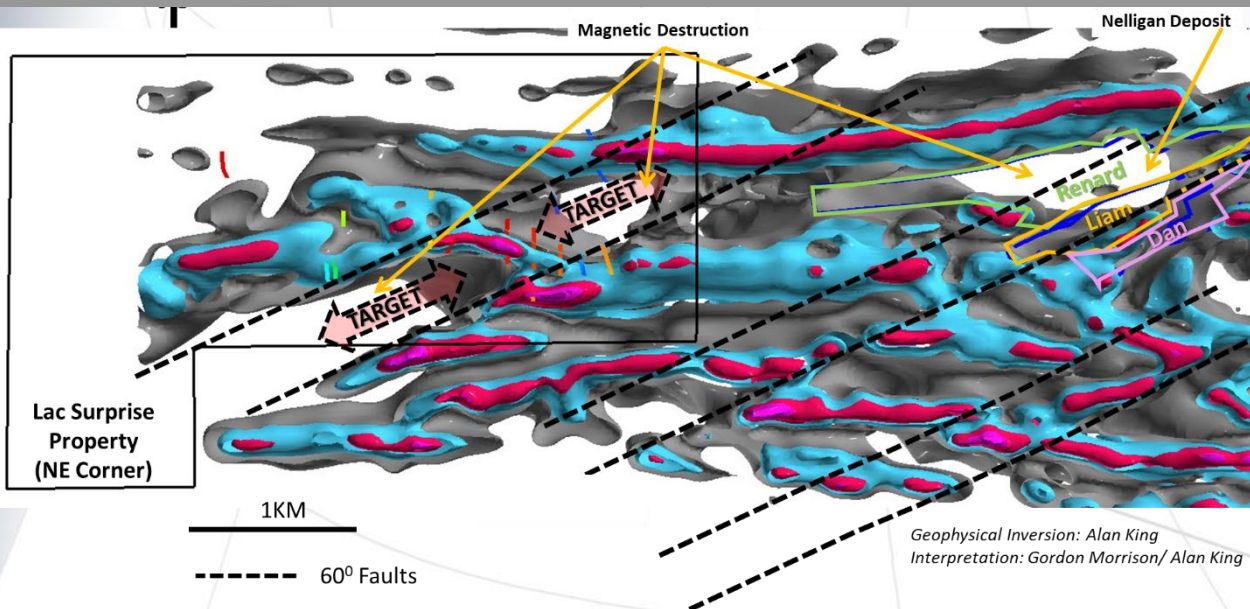
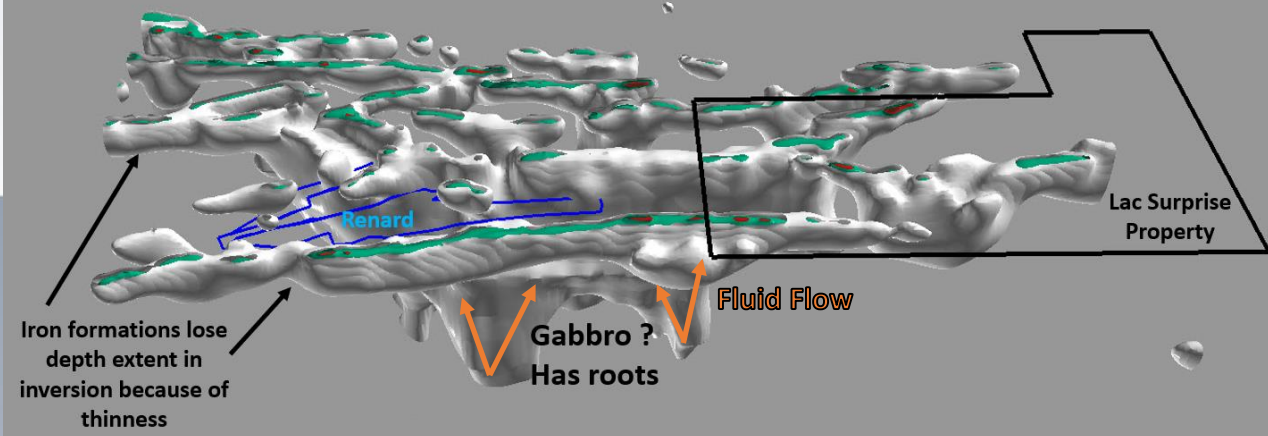
Remarkable **Gold** Opportunities in  
the Highly Prospective Chapais-  
Chibougamau Camp



# LAC SURPRISE: Targeting...Fingerprinting Nelligan



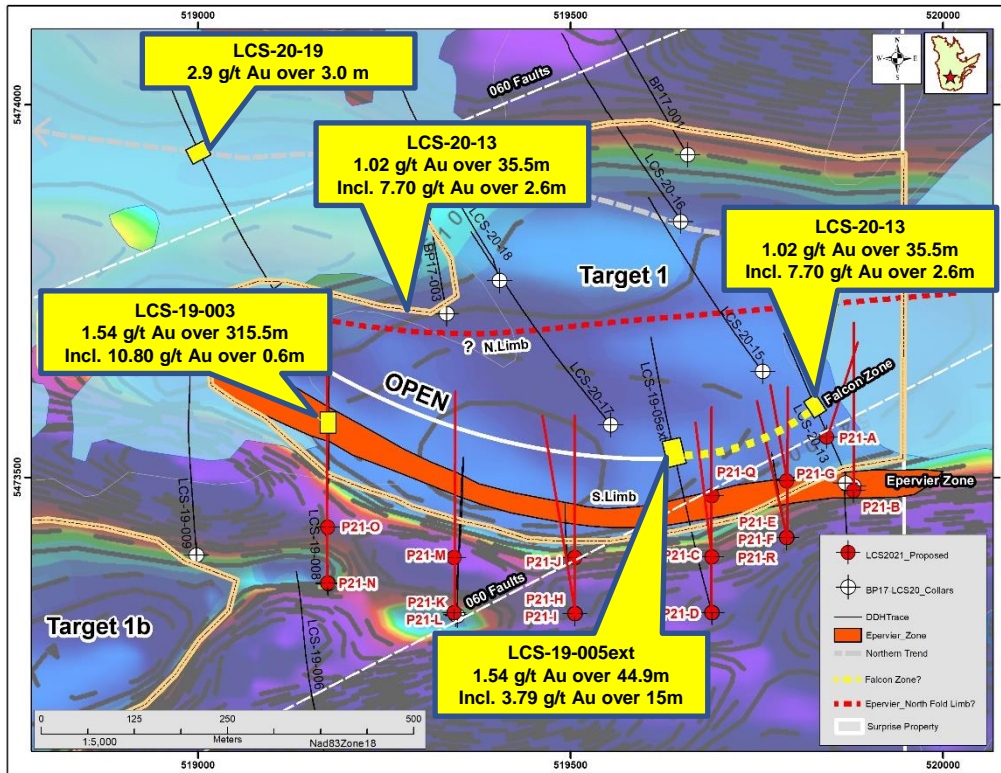
OBLIQUE VIEW LOOKING SOUTH



- Geophysical inversion work on Nelligan.
- Gold zones at Nelligan associated with:
  - ✓ Strong destruction of magnetic signature;
  - ✓ Mineralization clearly associated with 60° faults.
- Fault orientation and magnetic destruction also observed on Lac Surprise.
- Fingerprinting Nelligan critical in discovery at Target 1, identifying additional targets (Target 3).



# LAC SURPRISE: Target 1- Phase II Drill Program/ Stage I – Need to Edit grades and image



## Key Intersections:

### Summary LCS20-13:

- Discovery, new gold zone (Falcon): **1.02 g/t Au over 35.5m with a high-grade interval of 7.70 g/t Au over 2.6m;**
- Discovery, two additional, gold-bearing zones, lowermost zone assayed **1.54 g/t Au and 1.81 g/t silver over 3.9m;**

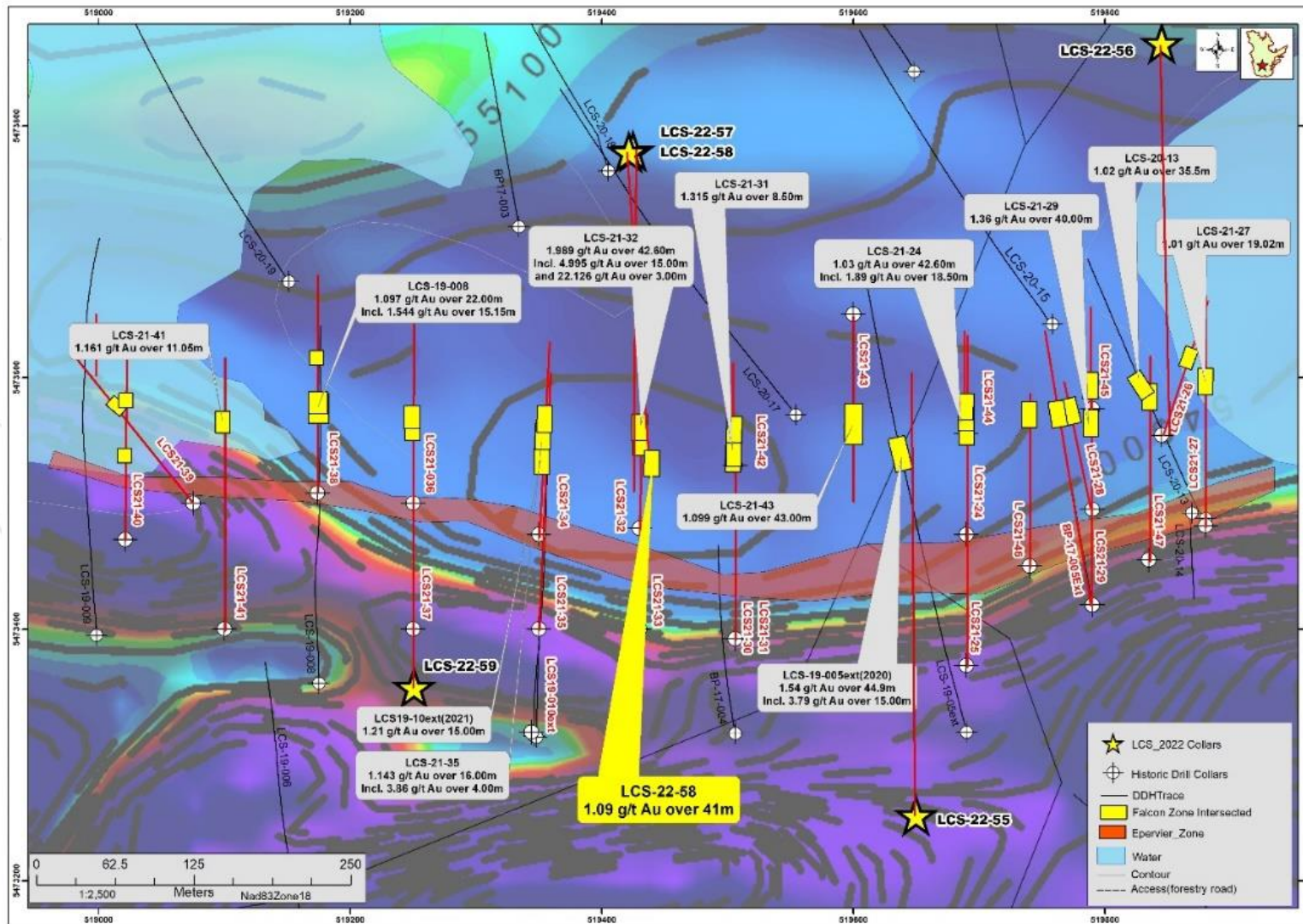
### Summary LCS19-005ext:

- Extension Falcon gold zone: **1.54g/t Au over 44.9m including 3.79 g/ t Au over 15.0m.**

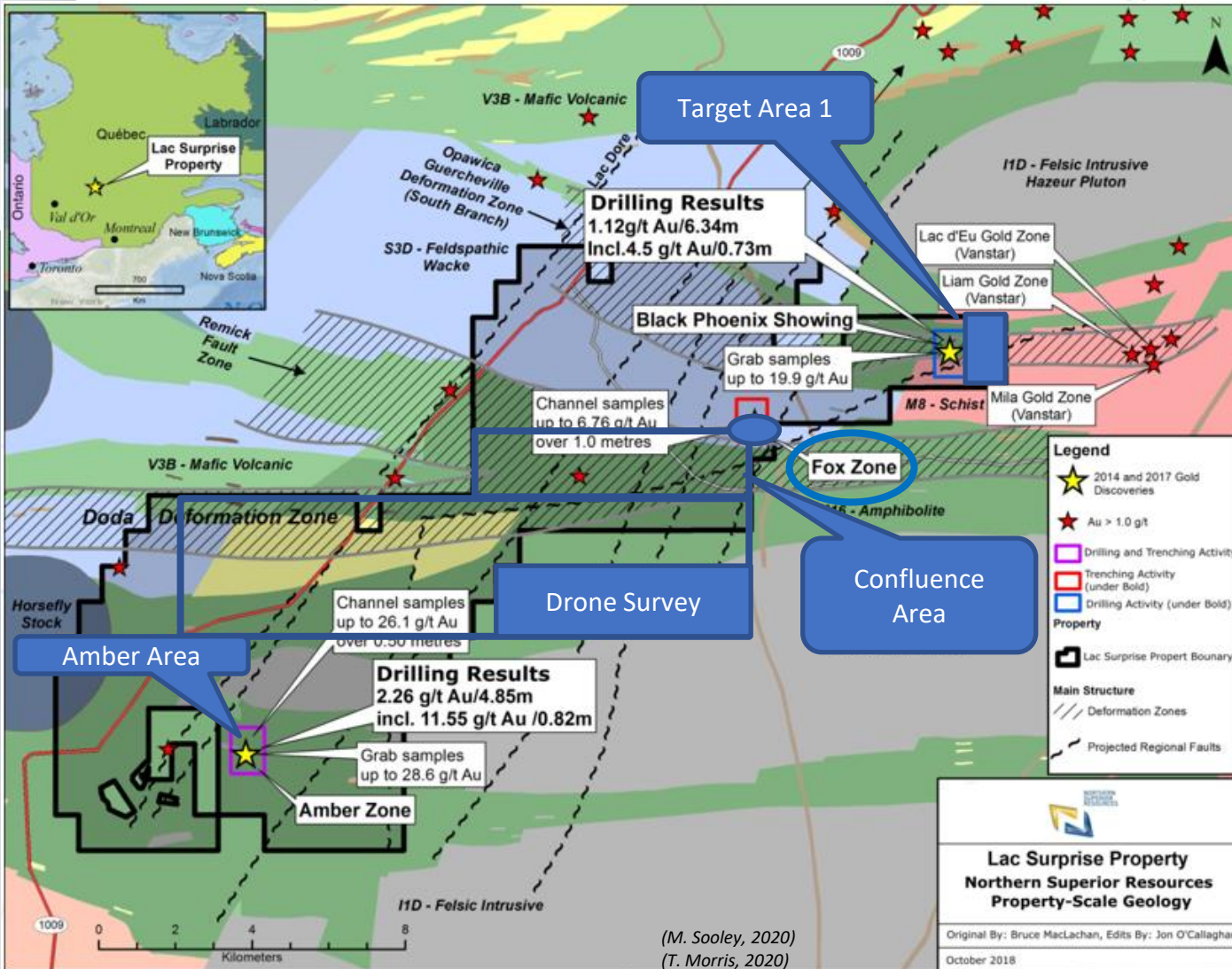
*(see Northern Superior Press Release, November 5<sup>th</sup>, 2020; December 22<sup>nd</sup>, 2020).*

## Host material very similar to Nelligan material:

- Coarser clastic materials (LCS20-13- wacke);
- Best mineralization occurs at or near the contact between the clastic sediments and the volcanoclastics;
- Primary mineral, pyrite (1 to 5%);
- Silicified material (LCS20-13, weak to moderate);
- Presence of potentially stratigraphic controlled gold-bearing units.



LAC SURPRISE, 2021  
Areas of Exploration Focus...



**Target Area 1**  
✓ Falcon Gold System

**Target Area 1b**  
✓ Parallel System to Falcon?

**Confluence Area**  
✓ 2021 Drone Survey  
954 line kms.

**Amber Area**  
✓ 2022 IP and magnetometer survey, 58 line kms.

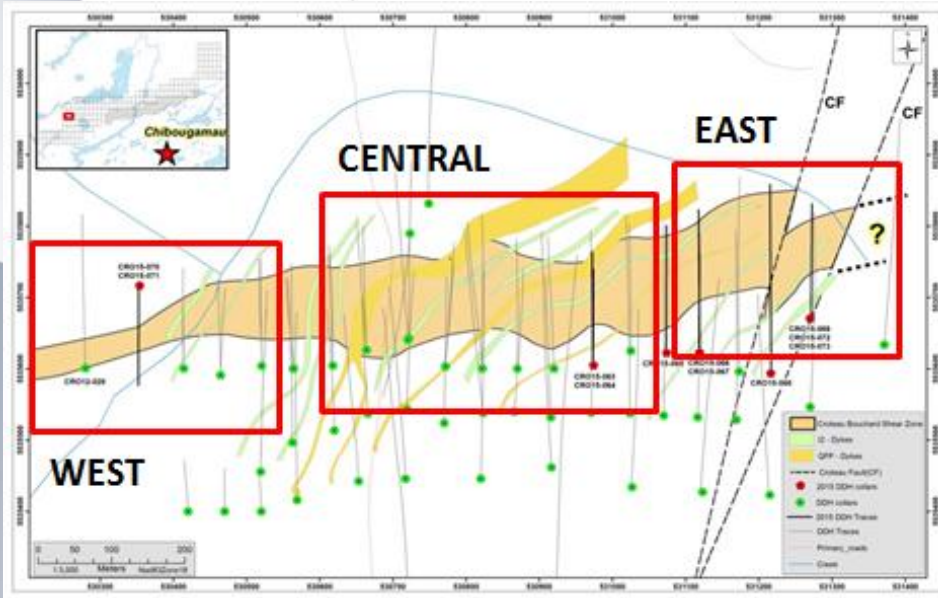
# CROTEAU EST

A **Gold** Resource Already Defined,  
Remarkable “Blue Sky” Potential...  
in the Highly Prospective Chapais-  
Chibougamau Camp



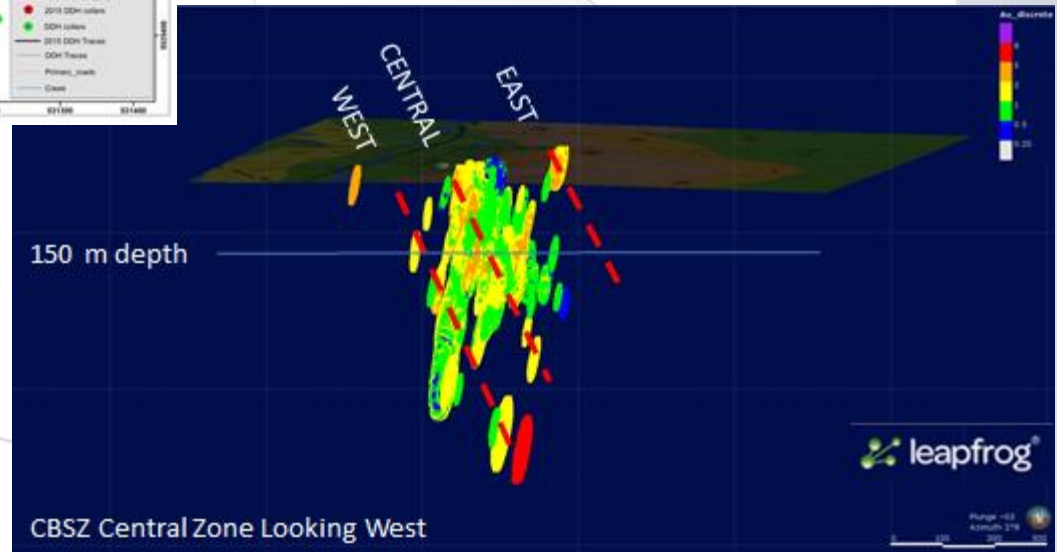
# CROTEAU EST: Existing Discovery and Resource

## 43-101 Compliant, Inferred Mineral Resource...



- Central (~ 550m strike by 150m width)
  - ✓ Gold cut-off of 1.0 g/t Au, 11.6 million tonnes, grade 1.7ppm Au; yielding 640,000 ounces of gold;
  - ✓ Additional unclassified component of 270,000 ounces of gold."

- Resource based on 64 holes (20,643m), 50m spacing:
  - ✓ CBSZ ~1.1 km long, open along strike, both directions;
  - ✓ Only one hole to 575m (all others < 350m), open at depth; and
  - ✓ Additional CBSZ's?



# CROTEAU EST: Cracking the High Grade Code



## HIGH GRADE BOULDERS

<b>15.0g/t Au</b>	<b>52.8g/t Au</b>	<b>68.7g/t Au</b>	<b>58.8g/t Au</b>
-------------------	-------------------	-------------------	-------------------

*(see Northern Superior press releases, July 20th, 2011/ Nov. 12, 2013)*



## HIGH GRADE TRENCH SAMPLES

**92.57g/t Au, 1m; including 12.8g/t Au, 7.8m**

**14.37g/t Au, 7.5m**

**8.49g/t Au, 5.7m**

*(see Northern Superior press releases, Oct. 12, 2011/ July 5, 2017)*



## HIGHLIGHTS, 2017 CORE DRILL PROGRAM: 96% SUCCESS RATE

### HIGH GRADE INTERSECTIONS

**11.06g/t Au, 9.1m; including 43.75g/t Au, 2.00m**

**61.24g/t Au, 5.95m; including 705g/t Au, 0.5m**

**7.50g/t Au, 7.95m; including 56.40g/t Au, 1.00m**

**1.99g/t Au, 34.65m; including 9.46g/t Au. 2.35m**

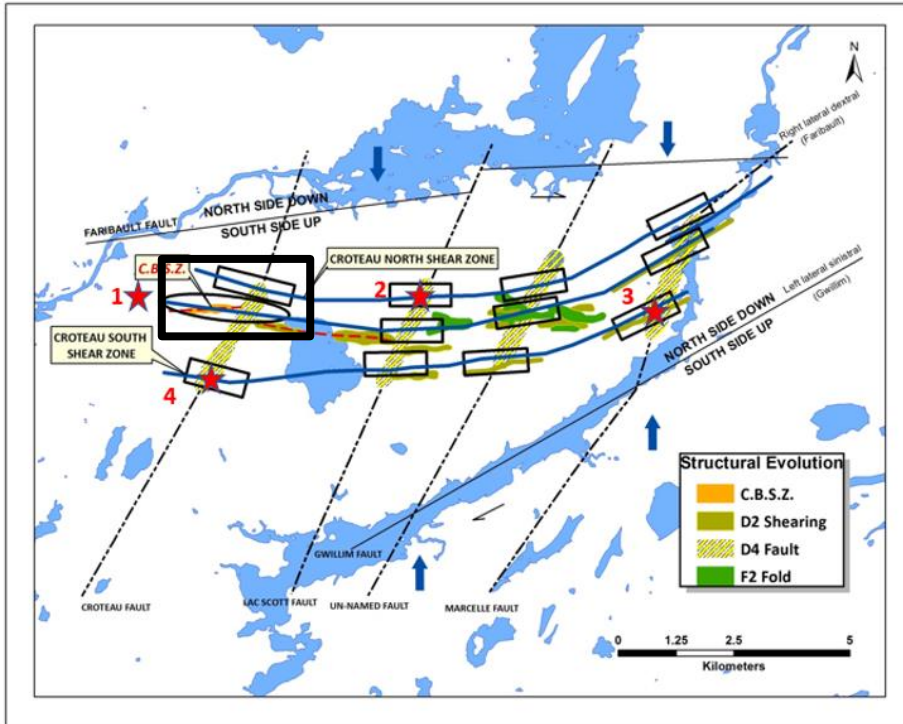
*(see Northern Superior press releases Nov. 13, 2017/ Jan. 10, 2018)*



Visible Gold @ 167.4m  
CRO17-111  
705 g/t Au // 0.5m



# CROTEAU EST: Blue Sky Regional Potential...



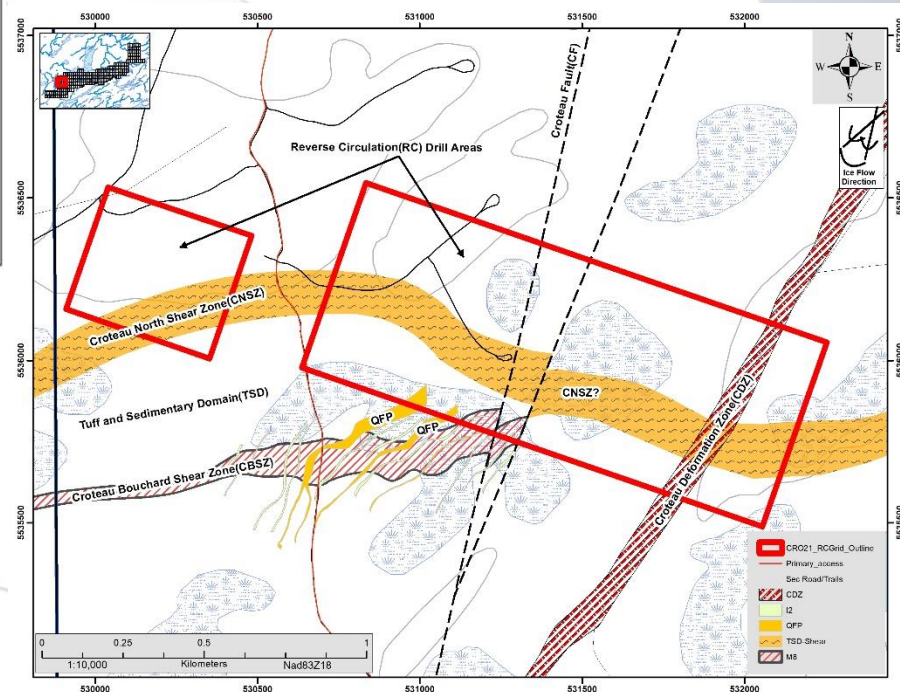
The CBSZ at the intersection of a NE-SW fault and E-W deformation zone;

- 11 other such opportunities
- Gold showings discovered at several of these intersections.

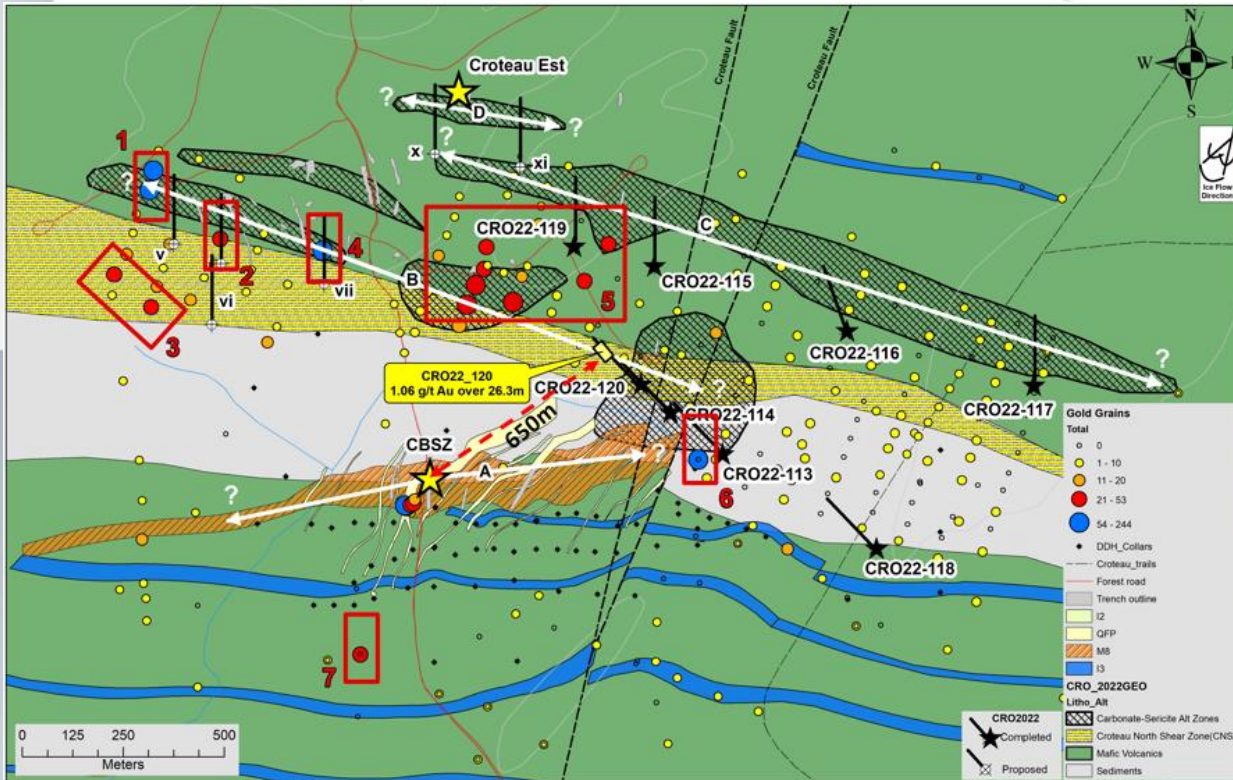
Inferred Resource: Multiple Opportunities to repeat the CBSZ:

- Specific, Identified Opportunities:
- ★ 1: Western extension, CBSZ
  - ★ 2: Trench 101
  - ★ 3: Area # 5
  - ★ 4: Croteau South

However... there is a larger “gold” footprint to consider at the CBSZ... based on....



# CROTEAU EST: Larger CBSZ Gold Footprint...



- Location of 2022 core drill collars and traces, gold grain data, CBSZ area
- Note new gold discovery associated with CRO22-120, broad low-grade interval of 1.06g/t Au over 26.3m, including higher grade intervals of 1.928g/t Au over 11.0m and 4.98g/t Au over 3.00m

- Lithologies and geochemistry observed from both the core and RC drilling programs in addition to the distribution of anomalous values of gold grains expands our understanding of the robust potential size of the large gold-bearing system associated with the CBSZ.
- Distance of CRO22-120 from the CBSZ is 650m (red dashed arrow).

# Chevrier

An New Opportunity in the Chapais-  
Chibougamau Gold- Copper Camp...

# CHEVRIER: The Property...



## Location & Property

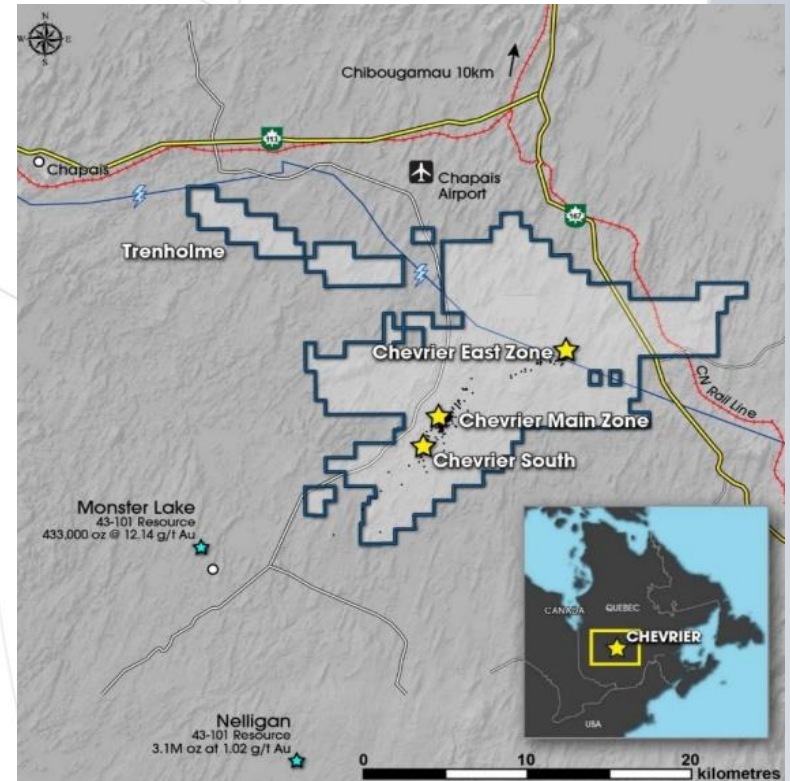
- ~35 km to southwest of the mining-friendly town of Chibougamau, Quebec
- 574 mineral claims totaling 290 km<sup>2</sup> within the Abitibi Greenstone Belt

## Key Deposits

- 15 km of the Fancamp Deformation Zone
- **Main Zone:** steeply-dipping high-grade quartz-ankerite + tourmaline veins (0.7 – 2 m thick) over ~1.4 km x 200 m
- **South Zone:** disseminated gold zones (up to 30 m thick) extends 1,200 m down dip
- **East Zone:** 6 shear zones over 750 m down-dip

## Project Timeline

- 2016: sampling of historical drill core
- 2017: 10,195 m of drilling and prospecting
- 2018: relogged 20 historical drill holes. Surface program and geophysics
- 2019: 43-101 resource estimate, till survey
- 2020: 8,710 m of drilling
- 2021: 4,866 m of drilling & 2,602-line km borne magnetic survey
- Jan 2022: updated NI 43-101 resource
- Total of 479 holes & 117,532 m drilled to date



### Near/adjacent to:

- |                               |                    |
|-------------------------------|--------------------|
| ✓ Highway 113                 | ✓ Skilled labour   |
| ✓ Forestry roads              | ✓ CN rail line     |
| ✓ Low-cost grid power (hydro) | ✓ Regional airport |

# CHEVRIER: 2022 Resource Update...



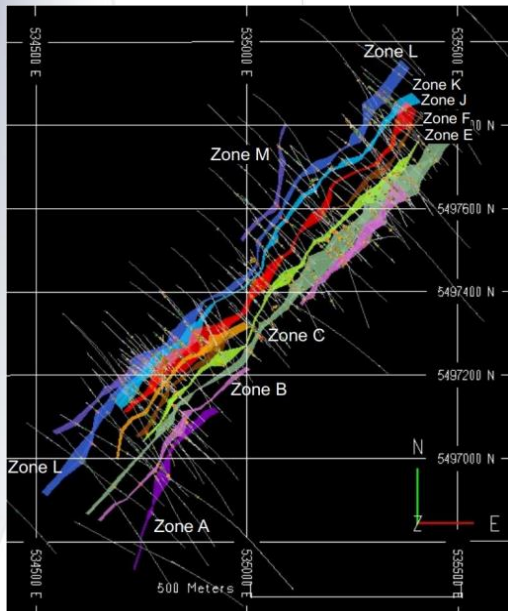
- In January 2022, announced a 77% increase in open pit resources and a 39% increase in total gold resources<sup>1</sup>
- Based on 220 holes and 63,640 m of drilling across the Main Zone
  - Completed 39 holes, 10,178 m following 2019 estimate
- Main Zone comprised of 10 steeply dipping zones over 1,400 m by 200 m area
  - Azimuth~42° for most zones, but ~25° for Zones A & M
- Pit wall expanded, incorporating new & deeper zones

## NI 43-101 Resource Estimate for the Main Zone

Category		Cut-off (g/t Au)	Tonnes (000s)	Grade (g/t Au)	Contained (oz Au)
Open-Pit	Indicated	0.3	6,400	1.26	260
	Inferred	0.3	11,200	1.18	420
Underground	Inferred	1.0	4,460	1.62	232

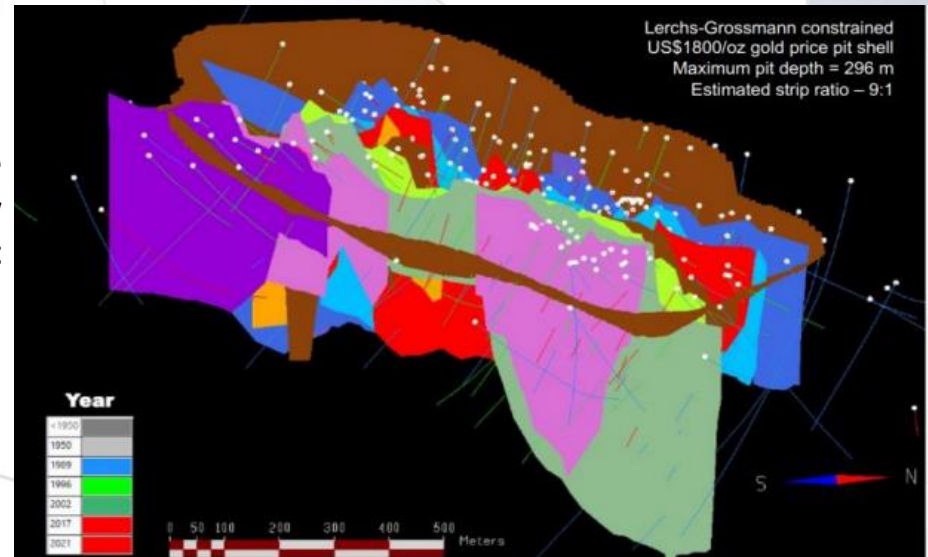
See Genesis' press release dated January 24, 2022 and NI 43-101 Technical Report: "Mineral Resource Estimation for the Chevrier Main Deposit, Chevrier Project" with an effective date of October 20, 2021. Resource estimate based on the following open pit and underground resource assumptions:

- Gold price of US\$1,800/oz
- Exchange rate of C\$1.30:US\$1.00
- Open pit mining cost of C\$2.60/tonne
- Underground mining cost of C\$50.00/tonne
- Processing and G&A cost of C\$20.00/tonne
- Mill recovery of 95%
- Pit slope of 45°



Left: plan view of the Main Zone

Right: Main Zone perspective view looking west



1. Comparison of January 2022 resource estimate to the February 2019 resource estimate for the Main Zone at a cut-off of 0.30 g/t OP and 1.0 g/t UG

# CHEVRIER: Near Term Resource Growth...



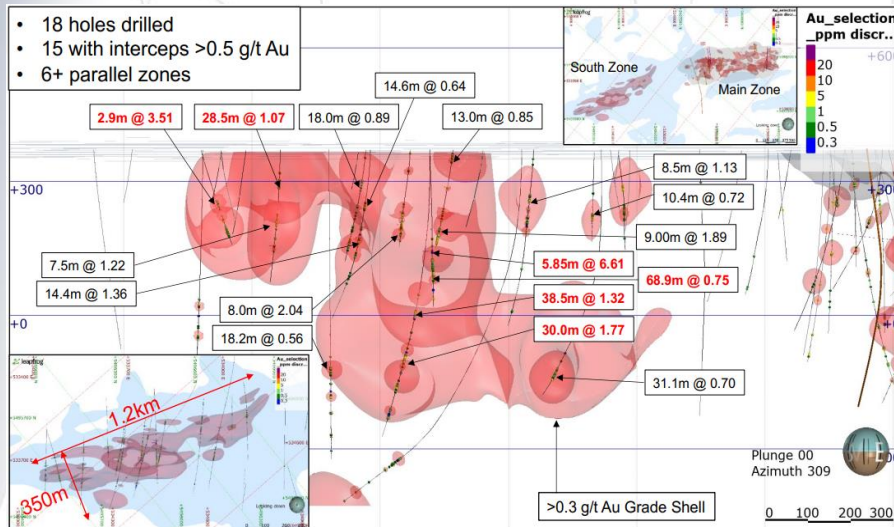
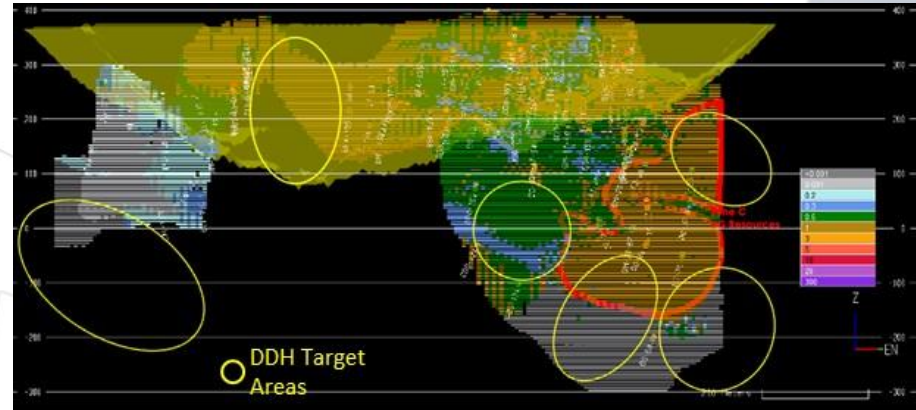
## Chevrier East Zone

- 34 drill holes (8,520 m) and 133 surface channel samples (201.5 m of sampling)
- Defined six shear zones over a 750 m strike
- Further drilling required to confirm continuity of gold mineralization

## Chevrier South Zone

- Immediately SW and along strike of the Main Zone
- 15 of 18 drillholes returned intercepts over 0.5 g/t Au
- Identified 6 parallel zones over 1,200 m strike

## Chevrier Main Zone: 16 large, drill-ready targets within and beyond the OP and UG resources areas



## Mineral Inventory for the South & East Zones

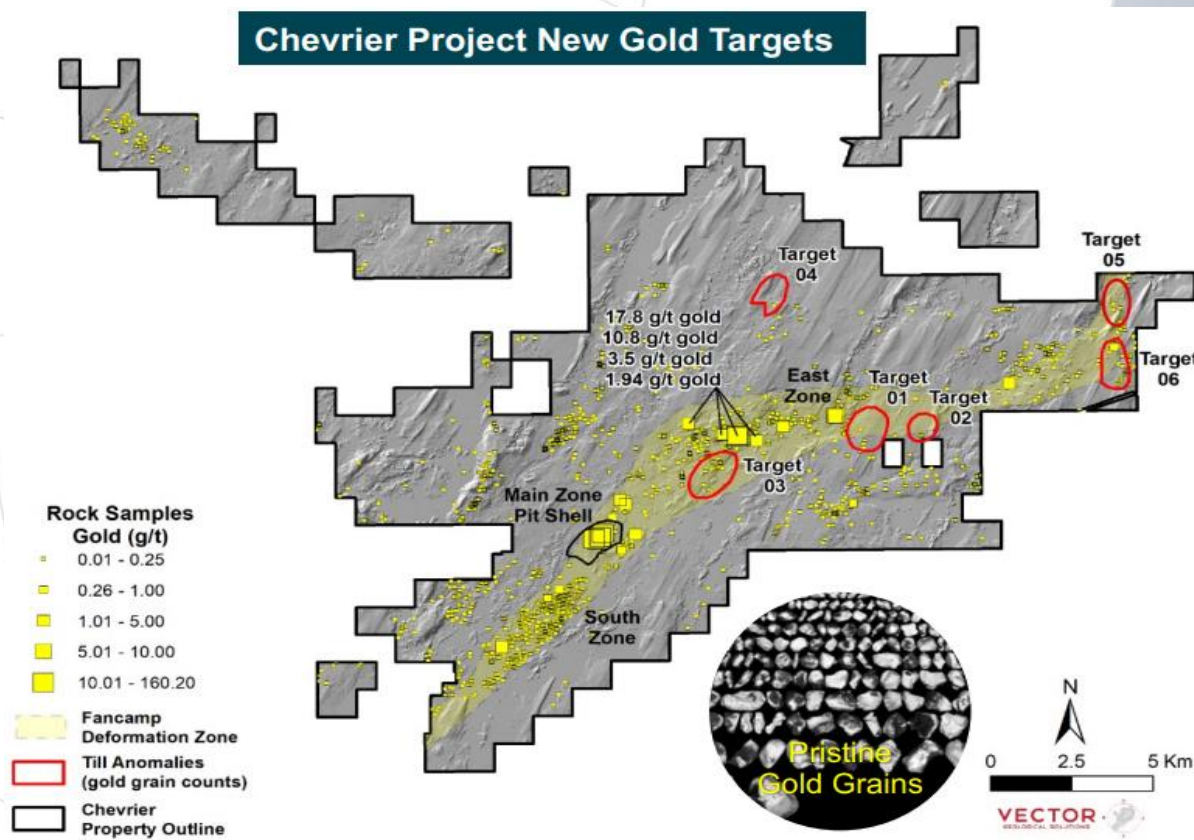
Zone	Estimate	Tonnes (Mt)	Grade (g/t Au)	Potential (000 oz Au)
South Zone OP <sup>1</sup>	Low	13.0	0.70	293
	High	30.0	0.60	579
East Zone OP	Low	0.3	1.26	12
	High	0.4	1.23	16
East Zone UG	Low	0.2	1.25	8
	High	0.7	1.20	27
<b>Total</b>	<b>Low</b>	<b>13.5</b>		<b>313</b>
	<b>High</b>	<b>31.1</b>		<b>622</b>

1. Calculated within pit shells using gold prices of US\$1,700 and US\$1,870/oz and cut-off grades of 0.30 g/t

# CHEVRIER: Regional Targets Across This District Scale (290km<sup>2</sup>) Property



- Property is host to parallel breaks with over 20 km of largely untested potential
- Identified 23 gold targets, including 6 high priority targets
  - Targets identified through systematic programs carried out since 2019
- Genesis has completed regional programs including mapping, property-scale gold-in-till surveying, soil sampling and IP surveying
- Genesis completed an initial ~3,400 m drill program in 2021 testing priority 1 target areas, where anomalous gold mineralization was identified





NORTHERN  
SUPERIOR  
RESOURCES

**TPK**

**Simply...**

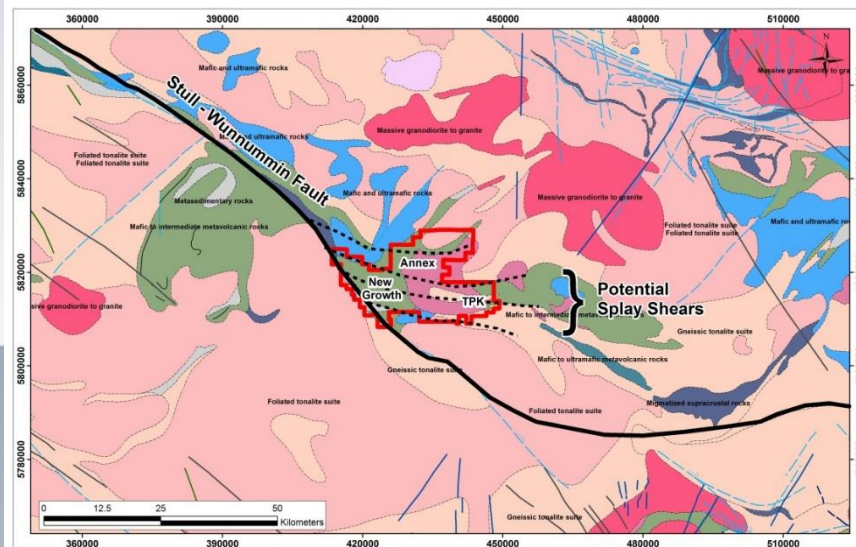
**A Truly Unique, Rare And Remarkable  
Opportunity...**



**TSXV: SUP / OTCQB: NSUPF**

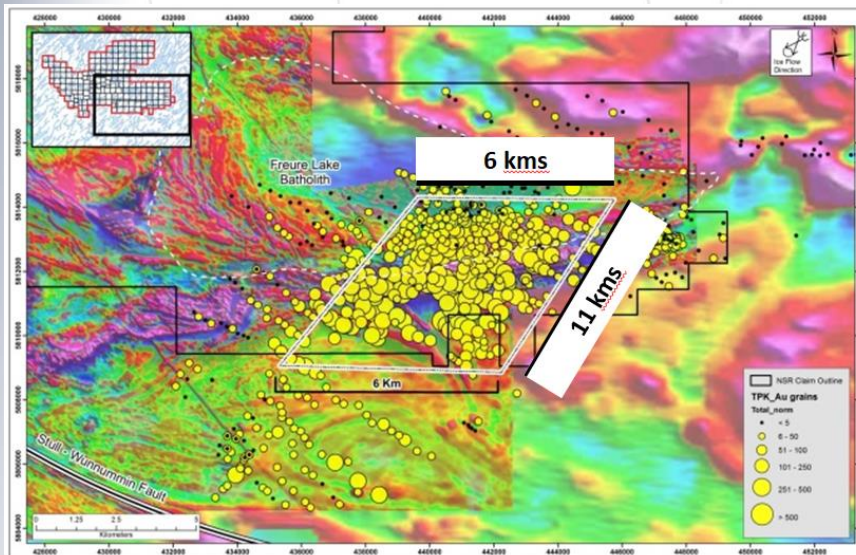


# TPK: GOLD?



## Structural Setting

- ✓ **Primary Structural Control:**
  - Gold- receptive splay shears off a major inflection, Stull- Wunnummin Fault.
- ✓ **Comparable**
  - Malarctic- Val d’Or gold district on splays off major bend, Larder Lake- Cadillac Fault.



## Gold Grain-In-Till Dispersal Aprons/ Corridors:

- ✓ **Unique geological feature, largest N. America**
- ✓ **Can only get this if there is significant gold exposed at the bedrock surface**
- ✓ **Most gold dispersal trains 200m x 3kms**

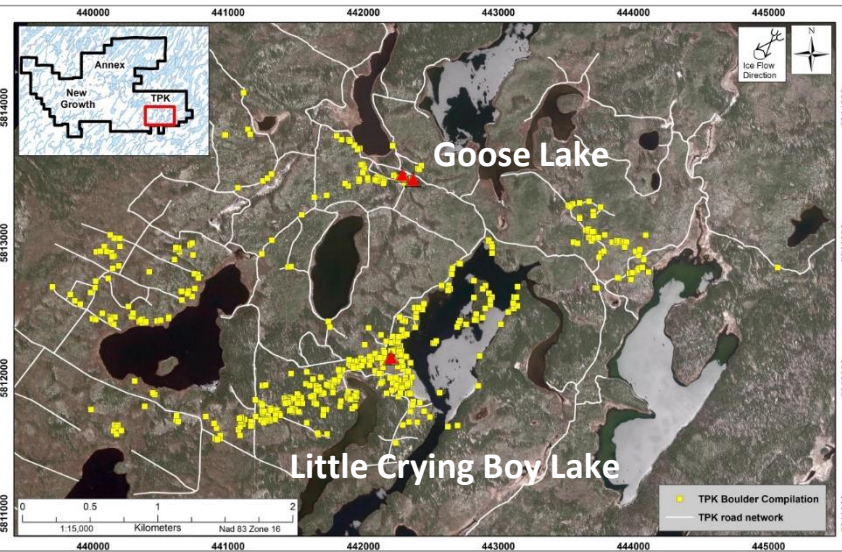
*“Gold grain anomalies of this scale are amalgamated responses from a cluster of gold zones. They normally indicate a large gold system or district rather than a single gold zone...”*

**Think District, Scale: Atlantic Gold/ Meadowbank/ Hope Bay/ Casa Berardi/ Aurion Resources/ Meliadine**

# TPK: GOLD?

## Gold-Mineralized Boulder Trains:

- Embedded within gold grain-in-till dispersal apron;
- Several high grade gold-bearing, boulder dispersal trains;
- Boulder lithology and geochemistry reveals much regarding host rocks for the gold.



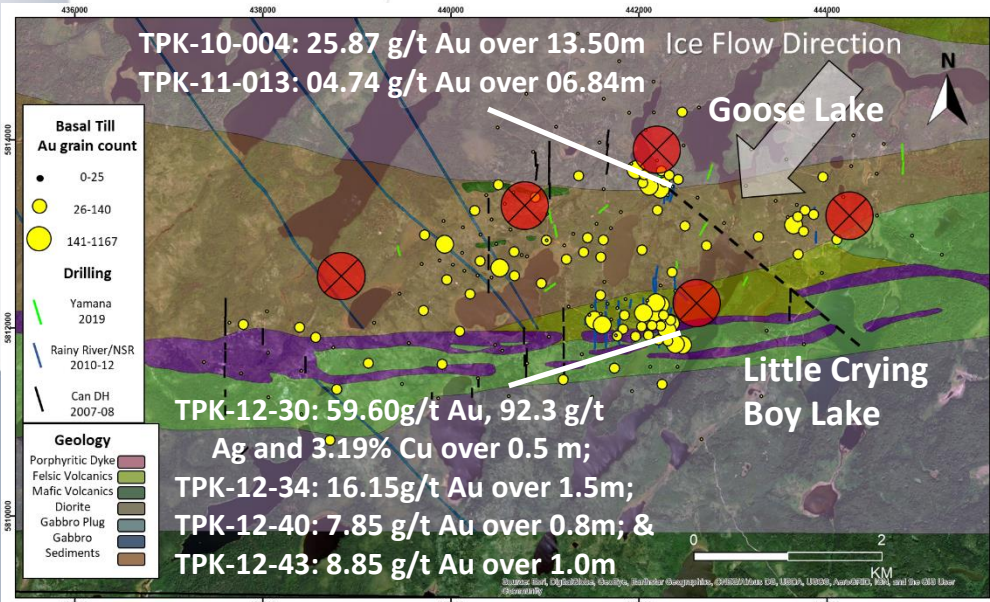
## High-Grade Gold Core:



- Multiple, significant gold discoveries already made, including:
  - ✓ Highlighted intersection: 25.87 g/t gold 13.45 m (TPK-10-004).

(see Northern Superior press releases: December 13, 2010; November 17, 2017)

# TPK: Targeting- Big Dam Area

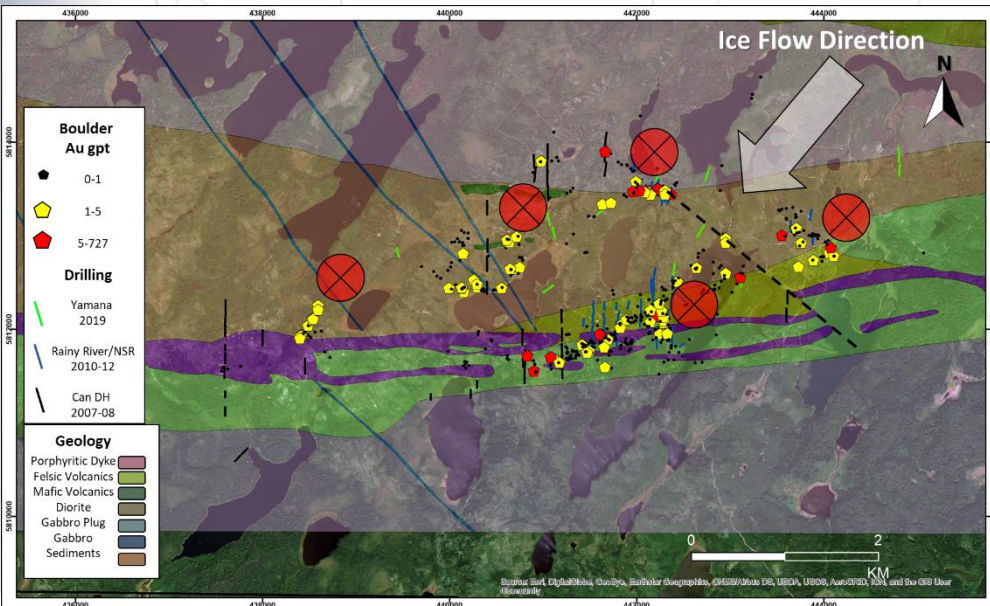


## Basal Till

- Gold Grain Data
- Pathfinder elements (Arsenic)

## Boulder Gold Geochemistry

- High Grade Gold
- Pathfinder elements (Arsenic)

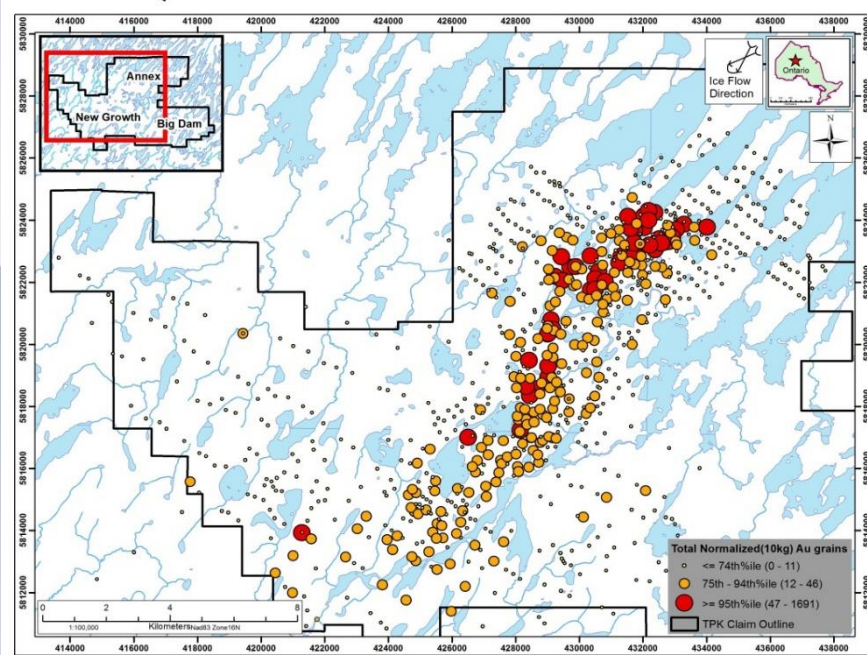


Highlighted Big Dam Gold Assays		
Year Collected	Boulders Collected	Gold g/t
2010	484	94.2
2011	103	14.0
2017	255	24.7

Highlighted Meliadine Gold Assays		
Year Collected	Boulders Collected	Gold g/t
2010	209	27.9
2011	87	6.81
2013	675	65.6
2014	248	14.4

# TPK: “Blue Sky” District Scale Opportunity-

## Annex- “Another District Scale System”...



- Keely Lake gold grain-in-till dispersal corridor (3.5 km wide, 13.5 km in length).
- Mineralized, large, tabular boulders returning assay values as high as **727 g/t gold, 111 g/t silver, and 4.05 % copper.**
- Several high quality targets defined from geophysics, gold grains and mineralized boulders.
- Gold-silver-copper mineralization.

Highlighted Annex Boulder with high Silver and Copper Assays

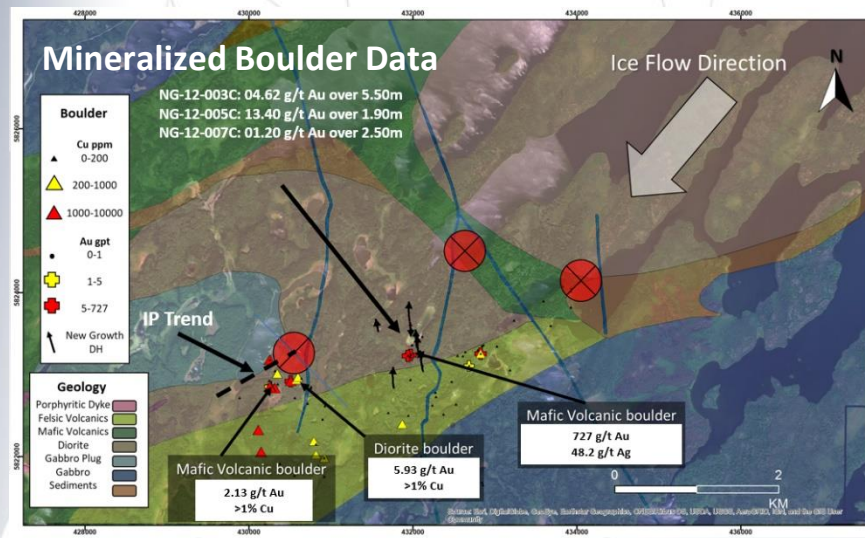
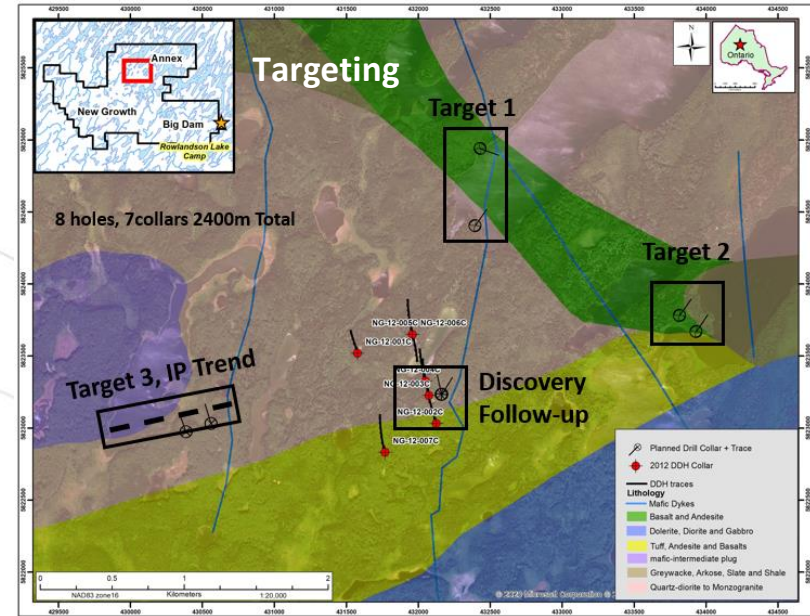
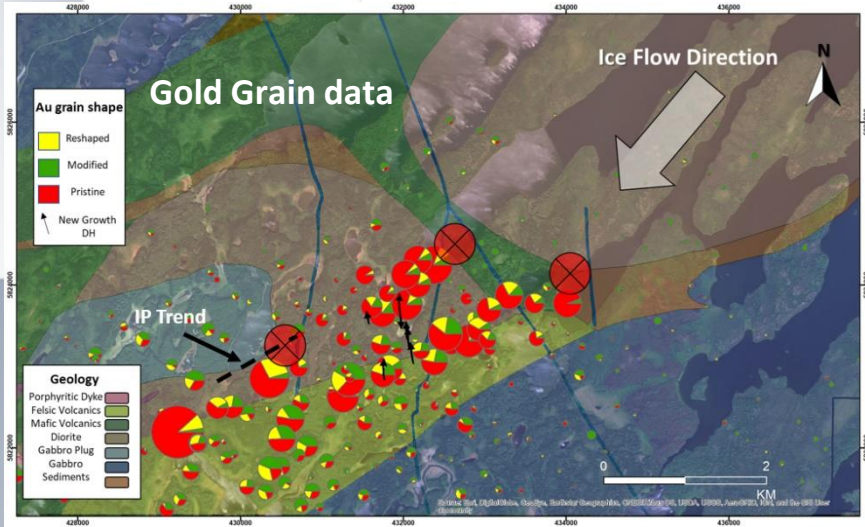
Year Collected	Boulders Collected	Silver ppm	Copper %	Au ppm
2011	101	53.7	1.92	5.93
		48.2	<0.01	<b>727.0</b>
		46.0	2.35	3.37
		37.7	1.46	2.13
2017	186	48.0	3.42	3.79
		34.5	1.99	4.28

Plus...

Highlighted Annex Gold Assays

Year Collected	Boulders Collected	Gold g/t
2011	101	727
		280
		133
2017	186	46.9

# TPK: Targeting- Annex Area



One discovery follow-up area + three target areas defined:

- ✓ Au- Ag targets associated with a basalt-andesite/ quartz diorite-monzogranite contact
- ✓ Au- Cu target associated with a dolerite- diorite- gabbro/ quartz-diorite monzogranite contact.
- ✓ Discovery follow-up drilling proposed to understand orientation of local structure associated with hole NG-12-003C, 4.63g/t Au over 5.50m.

