



CANADA
SILVER
COBALT

HIGHEST SILVER
GRADES IN THE WORLD

Critical Battery Metals
Nickel, Copper, Cobalt

CORPORATE PRESENTATION
November 2022



DISCLAIMER

Neither the TSX Venture Exchange nor its Regulation Service Provider (as that term is defined in the policies of the TSX Venture Exchange) accepts responsibility for the adequacy or accuracy of this material. This presentation may contain forward-looking statements including but not limited to comments regarding the timing and content of upcoming work programs, geological interpretations, receipt of property titles, potential mineral recovery processes, etc. Forward-looking statements address future events and conditions and therefore, involve inherent risks and uncertainties. Actual results may differ materially from those currently anticipated in such statements. The Company does not undertake to update any forward-looking information in this presentation or other communications unless required by law.

QUALIFIED PERSON

The technical information in this corporate presentation was prepared under the supervision of Canada Silver Cobalt Works Inc.'s President and Chief Operating Officer Matt Halliday, P. Geo., who is a Qualified Person in accordance with National Instrument 43-101.

PRECIOUS METALS WITH COBALT BY-PRODUCT



- Exceptional deposit at Castle East in Northern Ontario – highest silver grade in the world with 60,000m of drilling completed
- Planned ramp to access high-grade silver veins and conduct underground drilling
- Exploration underway at Eby-Otto gold project near Kirkland Lake
- 100% owned TTL high-grade mill – ready for processing Castle East high-grade material into silver dore bars

BATTERY METALS COMPANY



- New discovery at **Graal** in Northern Québec
- Drilled into massive sulphides formation containing high-grade nickel and copper, with cobalt, platinum and palladium by-products
- **Coniagas Battery Metals Inc.** subsidiary in preparation for potential monetization of Graal property



Ag

Silver for solar panels/electronics



Ni

Co

Nickel and Cobalt for EV batteries



Cu

Copper for EV wiring

KEY TECHNICAL Team Members

MATT HALLIDAY P.GEO | President and COO

15+ years of exploration/development worldwide including narrow-vein deposits (SGS, Kirkland Lake Gold, First Cobalt)

FRANK BASA P.ENG | CEO and Chief Metallurgist

40+ years of exploration/milling/metallurgy worldwide including Agnico Eagle in Cobalt Camp

GERHARD KIESSLING P.GEO | VP Exploration

Experienced Geologist (First Cobalt, Kirkland Lake Gold, McEwen)

DOUG ROBINSON P.ENG | Geological Consultant

Highly regarded geologist (Cobalt Camp, Kirkland Lake area)

DIANNE TOOKENAY | Director (First Nations Consultant)

Leads critical consultations with First Nations

CLAUDE DUPLESSIS P.ENG | GoldMinds GeoServices

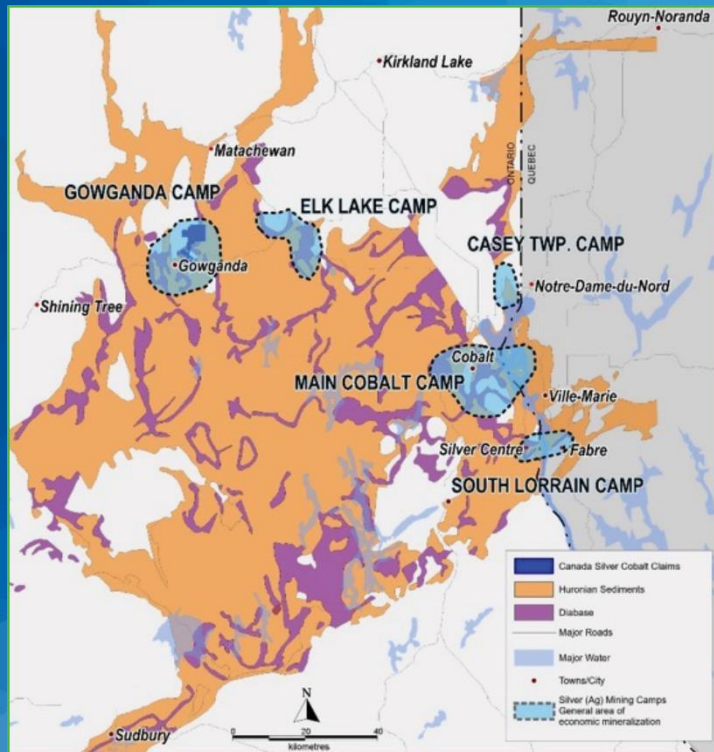
Leads Québec battery metals exploration



Matt Halliday, President and COO (left) and Frank Basa, Chairman and CEO (Right)

SILVER – COBALT PROPERTIES: Location - Location - Location!

CANADA'S SILVER-COBALT HEARTLAND

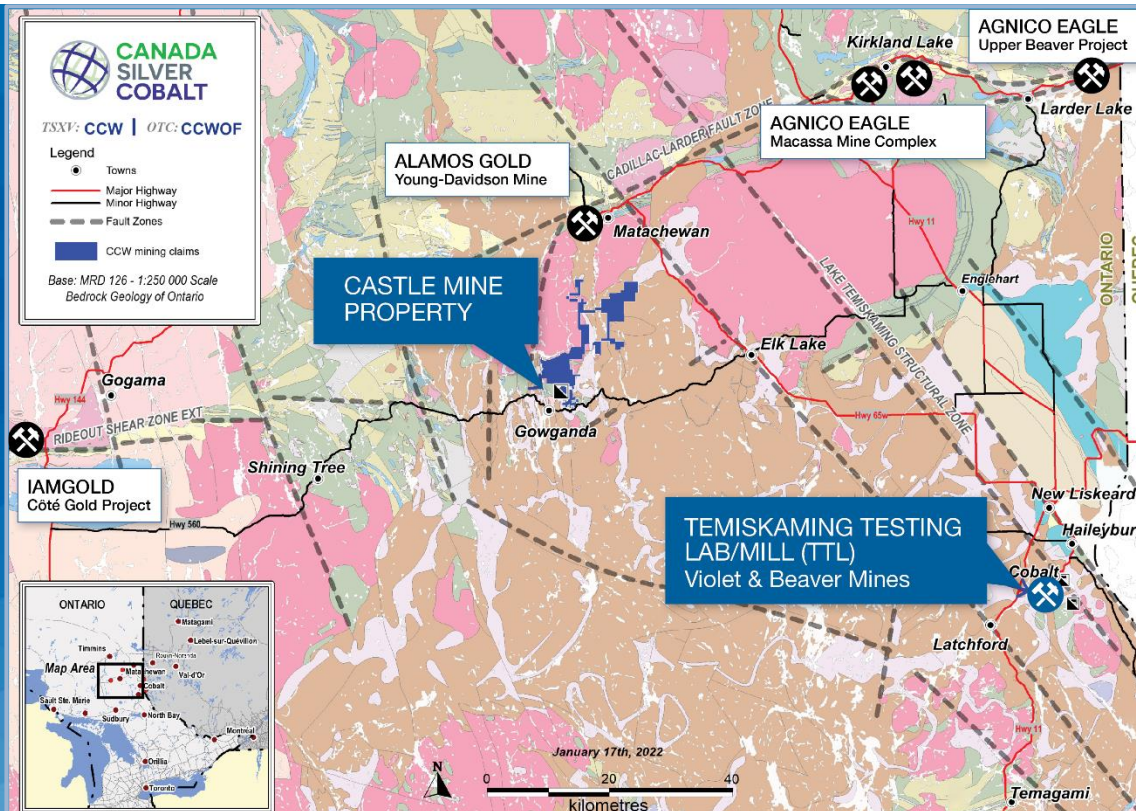


Birthplace of Canadian
HARD ROCK MINING

Global Top-Tier Grades
SILVER AND COBALT

Historical Production
>500 MILLION OZ SILVER
>30 MILLION LBS COBALT

SILVER - COBALT PROPERTIES Regional Geological Power!

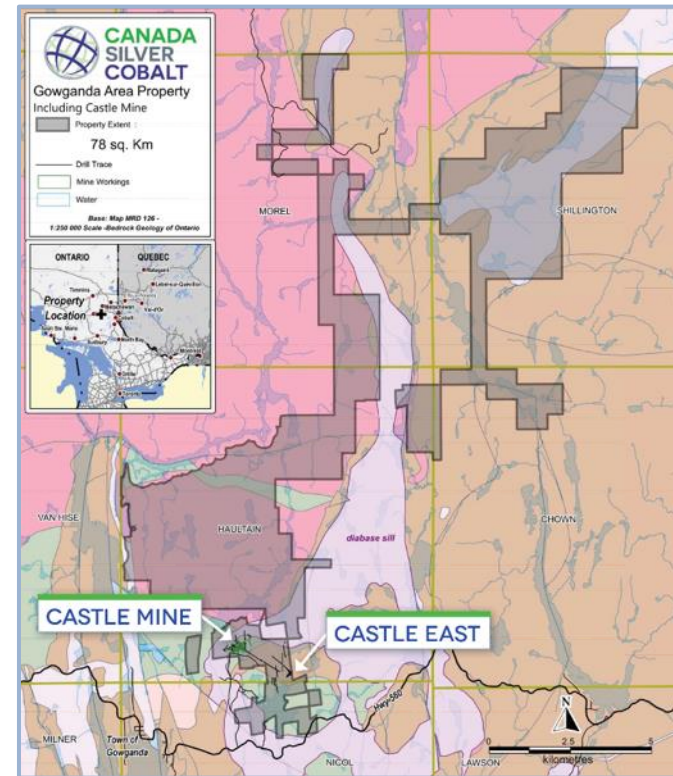


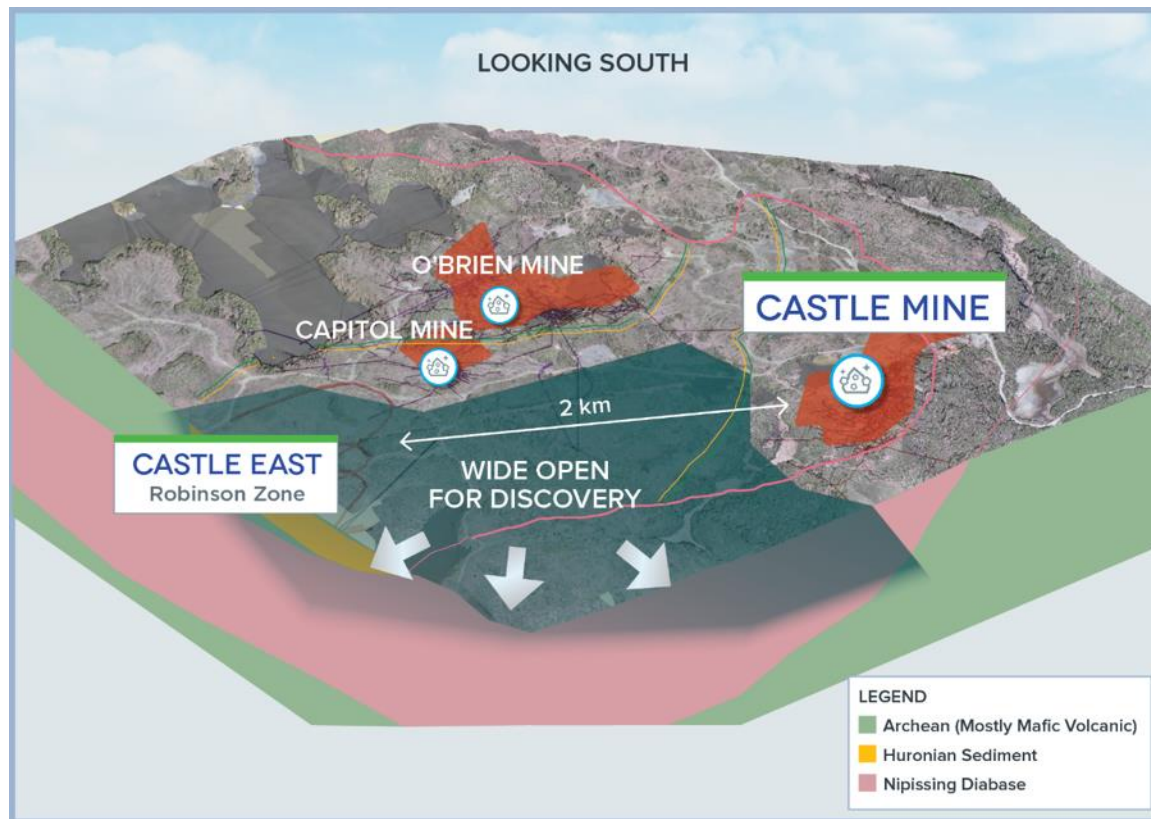
CASTLE SILVER Mine and Property



Castle Mine produced 9.5 million oz silver with 300,000 lbs cobalt as by-product in the 1900s and is the only permitted underground asset in the Northern Ontario Silver-Cobalt Camp

<p>78 KM² Total Claim Zone</p>	<p>PREVIOUSLY-PRODUCING MINE Located NE of Town of Gowganda in the middle of Gowganda silver-cobalt camp</p>
<p>EXCELLENT INFRASTRUCTURE</p>	<p>Includes all 3 former EXISTING MINE SHAFTS Castle Mine Shafts #1, #2 and #3 and the adit (near #2 and #3)</p>
<p>FIRST NATIONS agreements in place</p>	<p>Strong EXPLORATION POTENTIAL extends 17 km northeast</p>





CASTLE EAST HIGH-GRADE SILVER DISCOVERY, GOWGANDA CAMP, MILLER LAKE BASIN

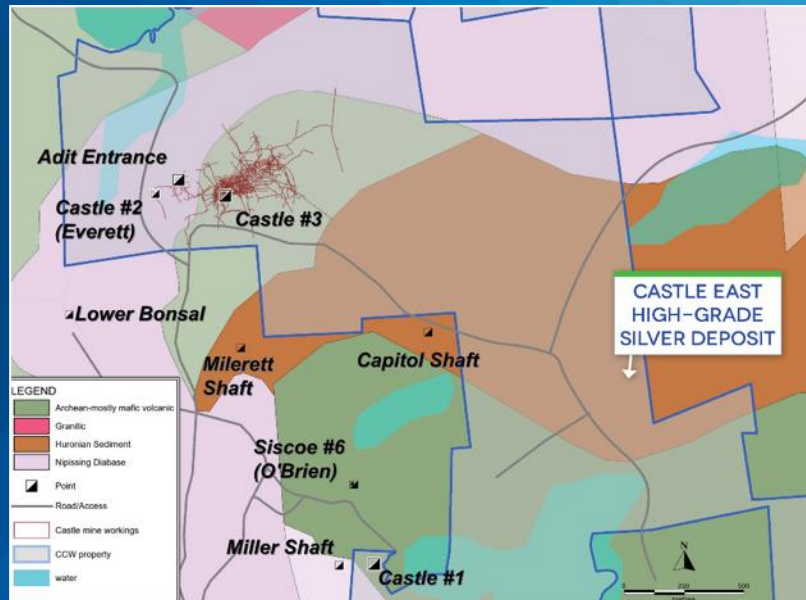
- Just a **small fraction of Castle East** has been drilled to date
- One of the **most significant new grassroots high-grade Silver discoveries** in Northern Ontario in several decades!
- **Top tier silver grades**
- Potential scale
 - This area, east of 3 past producers received **little historical attention**
- **Maiden resource** (May 2020)

ROBINSON SILVER DISCOVERY

250 Ag oz/tonne over 7.5 m oz Inferred Resource

CASTLE EAST SILVER DEPOSIT

Past mining in the Gowganda area produced 60 million ounces silver during the 1900s.



INTERSECTION HIGHLIGHTS



CS-19-08-W01 (50,583 gpt Ag over 0.6 m) Massive native silver in CS-19-08-W01 @ ~427 m vertical depth



CS-19-08-W02 (70,380 gpt Ag over 0.3 m) Massive native silver in hairline silver-filled fractures in CS-19-08-W02 @ ~418 m vertical depth

FIRST EVER 43-101 Silver Resource in Cobalt Camp



ZONE 1A AND 1B

- Average silver grade 8,582 g/t (250.2 oz/tonne)
- Total 7,560,200 inferred oz of silver in a combined 27,000 tonnes of material

MINERAL RESOURCE ESTIMATE AT CASTLE EAST AS OF MAY 2020¹

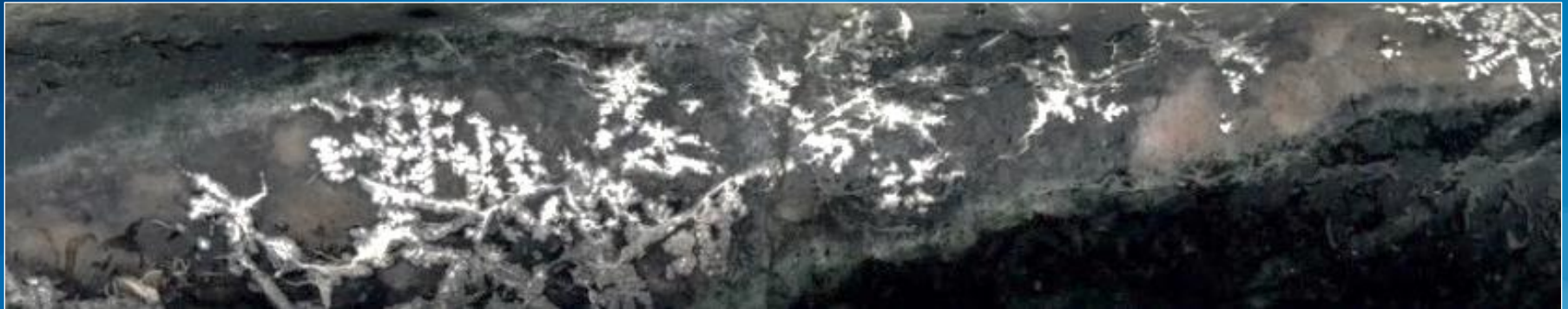
Inferred Mineral Resources	Tonnes	Grade								
		Ag g/t	Co g/t	Cu g/t	Ni g/t			AgEq g/t	Ag oz	AgEq oz
ZONE 1A	8,100	7,960	946	349	790			8,042	2,073,000	2,094,200
ZONE 1B	19,300	8,843	2,308	325	336			8,998	5,487,200	5,583,200
ZONE 2A	5,500	38	5,673	2,101	453			426	6,800	75,300
TOTAL INFERRED MINERAL RESOURCES	32,900	7,149	2,537	628	467			7,325	7,567,000	7,752,700

(1) Independently prepared by GoldMinds Geoservices Inc. in accordance with National Instrument 43-101 using a cut-off grade of 258 AgEq g/t. See company news release May 28, 2020.

Note: Update planned in Q1 2022 based on 50,000+ metres drilled and new high-grade veins discovered since May 2020.

NEW SILVER DISCOVERIES Including “Big Silver” Vein 2 within 60 metres of Robinson Zone Discovery Hole Ca-11-08

- **High-grade silver mineralization**
over 5-7 cm true width
- Silver Grade: **89,853 g/t Ag (2,621 oz/tonne)**
over a core length of 0.30 m
- Gold Equivalent Grade¹: **38.98 oz/tonne AuEq**
- Comparable to the average thickness of veins that **produced close to 60 million ounces of silver** from the **past-producers within a few kilometers of the Robinson Zone**



CS-20-39 (89,853 g/t silver over a core length of 0.3 meters)

(1) AuEq calculated based on US\$27.625/oz Ag and US\$1,857.80/oz Au

“BIG SILVER” VEIN 2 IS BEING EXPANDED Using Wedge Drilling with 2 Additional Intercepts above 50,000 g/t Ag or more than 20 oz/tonne Gold Eq.



Wedges **CS-20-39W2 @ 51,612 g/t Ag** over **0.41 m** and **CS-20-39W4 @ 53,739 g/t Ag** over **0.48 m**¹



High-grade silver mineralization over 4-6 cm true width in hole CS-20-39W2 of 51,612 g/t (1,506 oz/tonne) Ag over a core length of 0.41 m at 561.7 m depth – included in a wider interval of 30,931 g/t (902 oz/tonne) over 0.71 m.



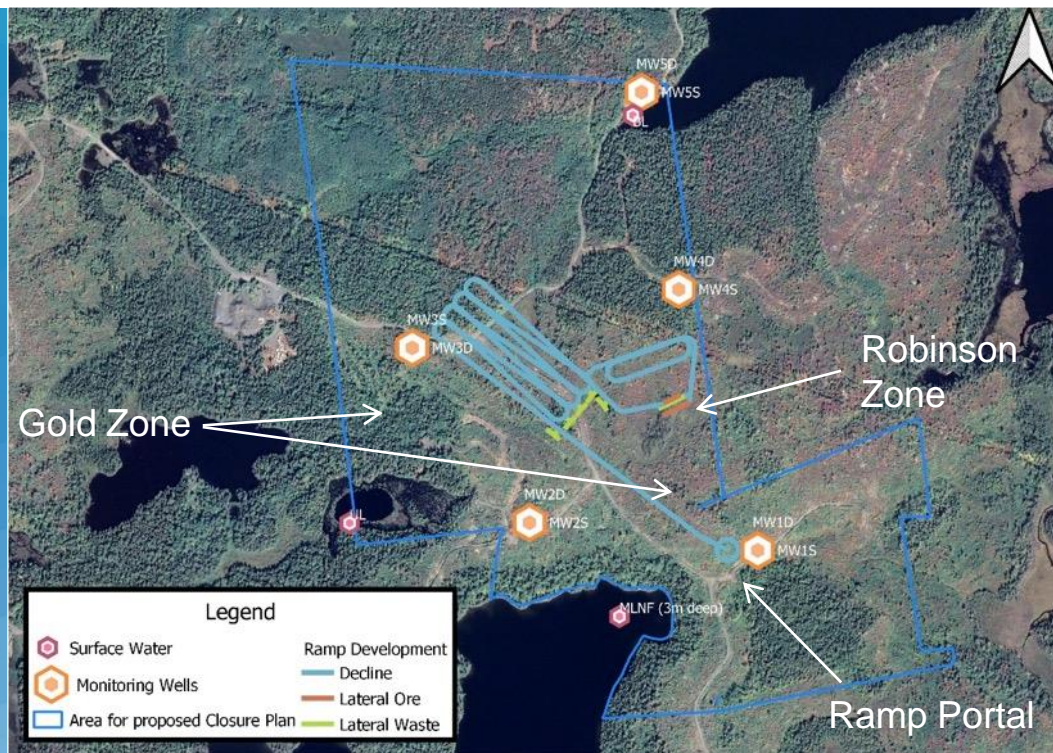
Bonanza-grade silver mineralization at 53,739 g/t Ag (1,568 oz/tonne Ag or 23.31 oz/tonne AuEq) and 2.22% cobalt over 0.48 m in hole CS-20-39W4 at 551.1 m depth – included in a larger interval of 19,308 g/t Ag (563.24 oz/tonne Ag and 8.38 oz/tonne AuEq) over 1.3 m.

(1) See CCW News Releases April 26 and June 16, 2021.

AuEq calculated based on US\$27.625/oz Ag and US\$1857.80/oz.

Conceptual schematic diagram of proposed ramp to access the newly discovered high-grade veins 400-500 meters below the surface

Location of monitoring wells for baseline studies required for permitting



(1) Timeline is estimated by the company and may be subject to delays.

NEARBY TTL High-Grade Mill Ready for Producing Silver Dore Bars



TEMISKAMING TESTING LAB / METALS PROCESSING FACILITY¹

Well-established facility in town of Cobalt **SPECIALIZES IN HIGH-GRADE MINERALIZATION**

Historically functioned as a **REGIONAL ASSAY LABORATORY**

High-grade mill for **BULK SAMPLING AND PROCESSING**

High capacity bullion furnace **PRODUCES SILVER AND GOLD DORE BARS**

Ball mill, cone crusher, concentrator **READY FOR MILLING AND TOLL PROCESSING**



PROOF OF CONCEPT TEST

**3 SILVER DORE BARS
POURED IN Q4 2019**

from Castle Mine
Waste Material

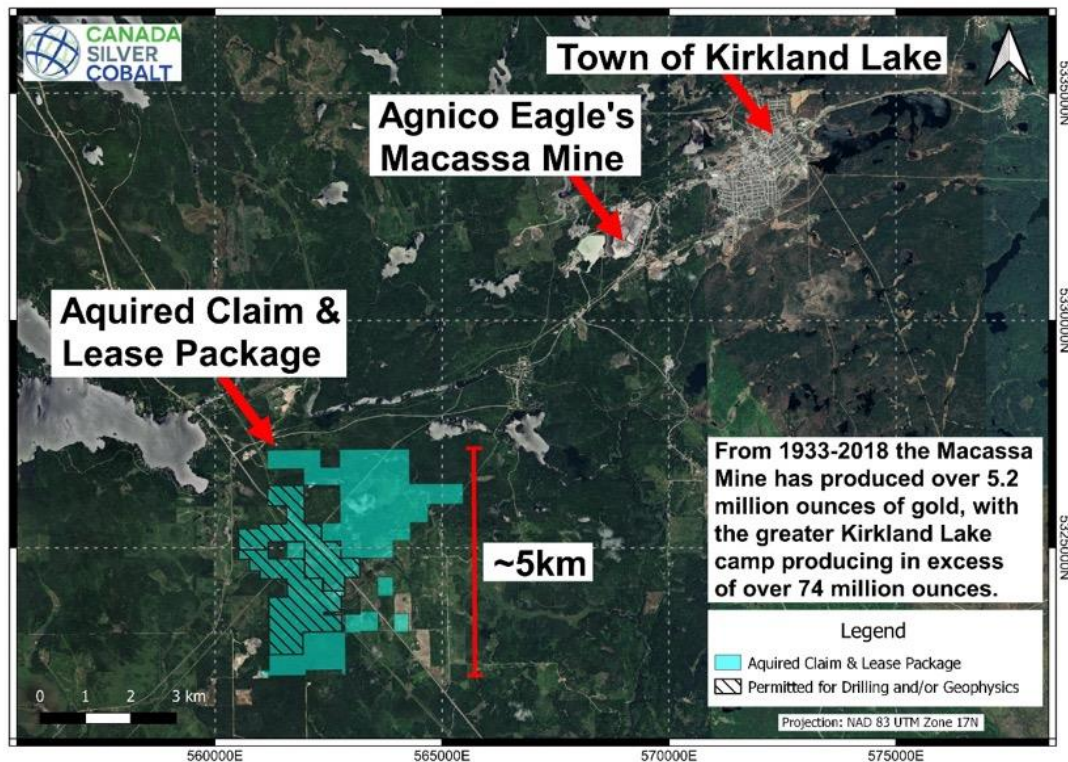


(1) See company news releases Oct. 10 and 24 and Dec. 4, 2019, Jan. 10 and July 31, 2020 and Jan. 15, 2021

EBY-OTTO Highly Prospective Gold Property

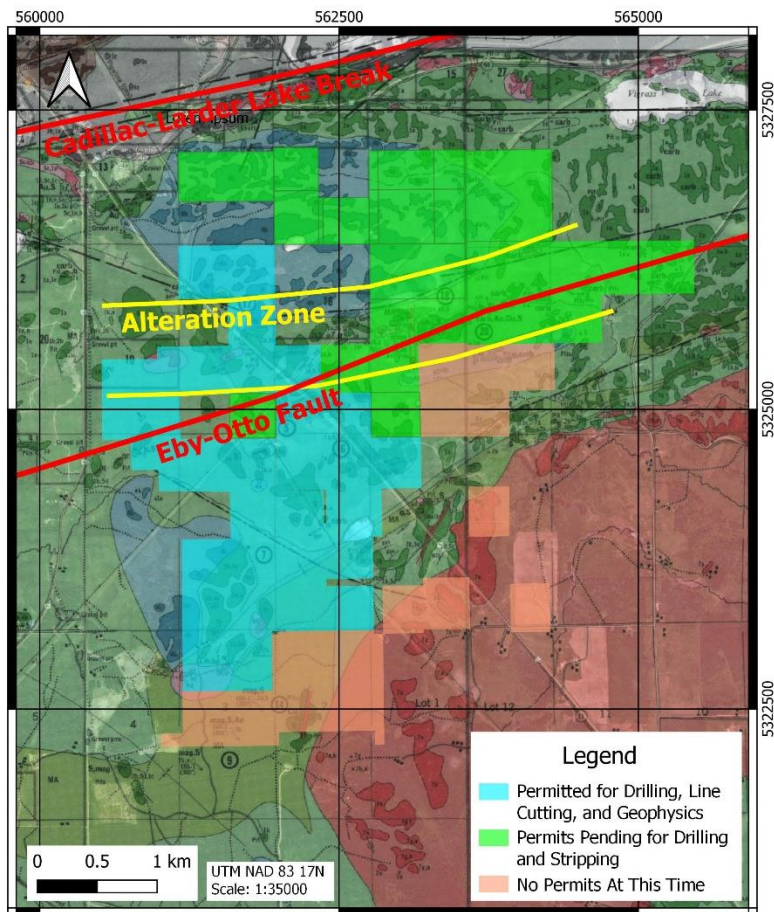
5 KM FROM AGNICO EAGLE'S HIGH-GRADE MACASSA MINE¹

- Acquisition of 1,000 hectares of gold exploration properties places CCW in the middle of **the most prolific high-grade gold-bearing areas in Northern Ontario that have produced 24 million oz gold in the past 100 years**
- 2 km strike length has **numerous strongly altered and mineralized quartz veins** outcropping at the surface
- **Mineralization and alteration highly favourable** in addition to being typical of other gold-bearing veins in the district



(1) For details, see CCW news releases August 3 and 30, 2021 and May 10 and August 22, 2022..

EBY-OTTO Located in Prime Geological Area



PHASE II EXPLORATION UNDERWAY¹

- **Diamond drill program underway, planned 2,000 – 2,500 meters targeting regional fault structures** such as Cadillac-Larder Lake Break and Eby-Otto Fault
- **Geological field work completed** in 2022 including outcrop stripping, exploration trenching, and channel samples
- **3D IP and resistivity geophysical survey being conducted** on the property by Dias Geophysical to complement the existing drone mag survey and further exploration on the property

(1) For details, see CCW news releases August 3 and 30, 2021 and May 10, August 22 and October 24 and 16, 2022..

BATTERY METALS for Electric Vehicles and a Cleaner World



- **Nickel, copper and cobalt exploration properties** in Northern Ontario and Québec (1 in Ontario and 14 in Québec)
 - Exploration underway at **Graal magmatic sulphide deposit with massive sulphides**
- Green **Re-2Ox** processing technology for producing **cobalt and nickel sulphates needed in EV batteries**
 - **Testing and design work for Pilot Plant underway** at SGS Lakefield
- **Coniagas Battery Metals Inc. formed as CCW subsidiary** to hold Graal exploration property for spin-out



PROPRIETARY RE-20X TECHNOLOGY

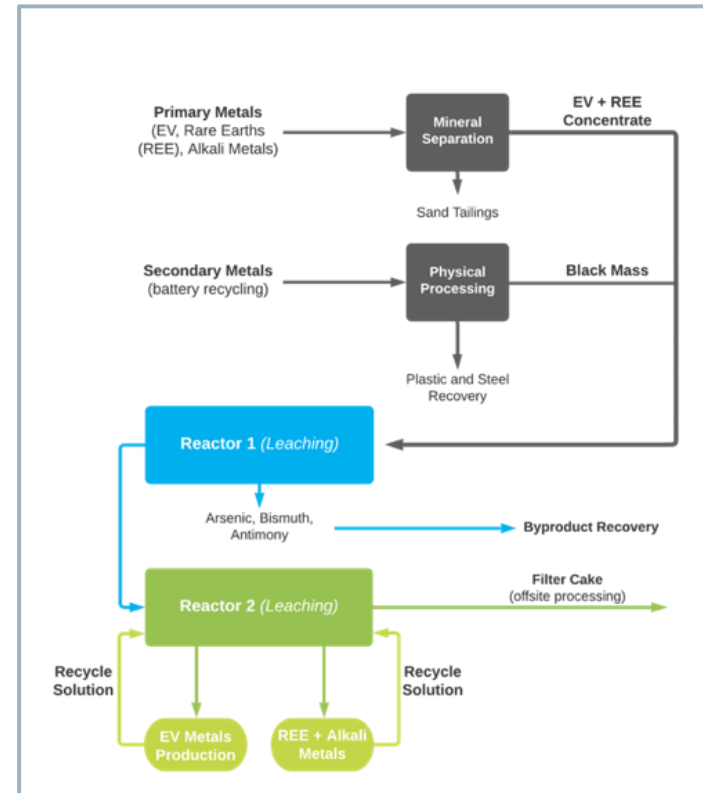
Clean, Environmentally Compliant



- **Re-20x** is a closed-loop hydrometallurgical process that extracts metals without any discharge or smelting
- Conforms with EV manufacturer's need for ethically sourced battery metals and strict environmental compliance
- Demonstrated in SGS lab tests to be effective in recovering 99% of cobalt from Castle gravity concentrates, removing 99% of arsenic, and producing an industry grade 22.6% cobalt sulphate for electric vehicle batteries
- SGS Canada has been engaged to test and design a Re-20x Pilot Plant at Lakefield, Ontario
- Feed material for test work will come from the Castle underground mine, Castle East Robinson Zone, Castle and Beaver tailings, recycled batteries, newly acquired nickel properties and Granada Gold Mine's rubidium deposit

More info at <https://re-2ox.com/> and in company news releases.

Re-20x PROCESS FLOWSHEET



RE-2OX Development Timeline

Re-2Ox

- **2017** Re-2Ox process developed and concentrate from Castle Mine produced for testing of Re-2Ox at SGS Lakefield
- **2018** Cobalt sulphate successfully produced from Castle concentrate at SGS Lakefield, including 200 grams meeting specifications outlined by Sumitomo Metals in Japan
- **2019 - 2020** Additional testing of Re-2Ox process
- **2021** SGS Canada engaged to design and build pilot plant and bench scale testing conducted on Beaver Mine tailings and alkali metal rubidium from drill core Granada Gold Mine
- **2022** Rubidium extracted successfully with 99% recovery using Re-2Ox process

**COBALT SULPHATE PRODUCED
FROM CASTLE MINE CONCENTRATE
USING THE RE-2OX PROCESS**



More info at <https://re-2ox.com/> and in company news releases.

BATTERY METALS EXPLORATION

Underway at Graal Property in Québec



- CCW acquired **14 properties covering 31,201 hectares across Quebec** in 2020 prospective for large deposits of EV metals including nickel, copper, and cobalt
- Airborne surveys conducted on **five properties for Bouguer (gravity) anomalies** in early 2021
- **Graal property identified as the highest potential target area**
- **15,000 meters drilled at Graal** in Fall/Winter 2021–2022 and Summer of 2022



For details, see CCW news releases February 16, April 20, July 22 and November 15, 22, 24 and 29, 2021, and January 10 and 31, March 3, April 4, June 13 and 27 and August 15, 2022, .

MASSIVE SULPHIDES DISCOVERED AT THE GRAAL PROPERTY



Massive sulphides in the drill core at Graal

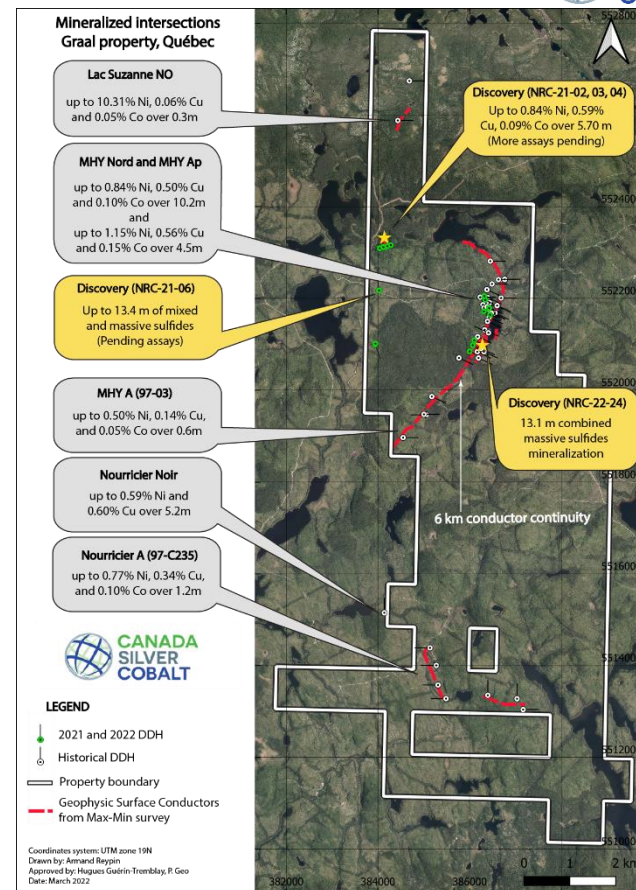
Claude Duplessis, Eng., GoldMinds GeoServices, at a drill rig at Graal

GRAAL PROPERTY Potential World-class Deposit

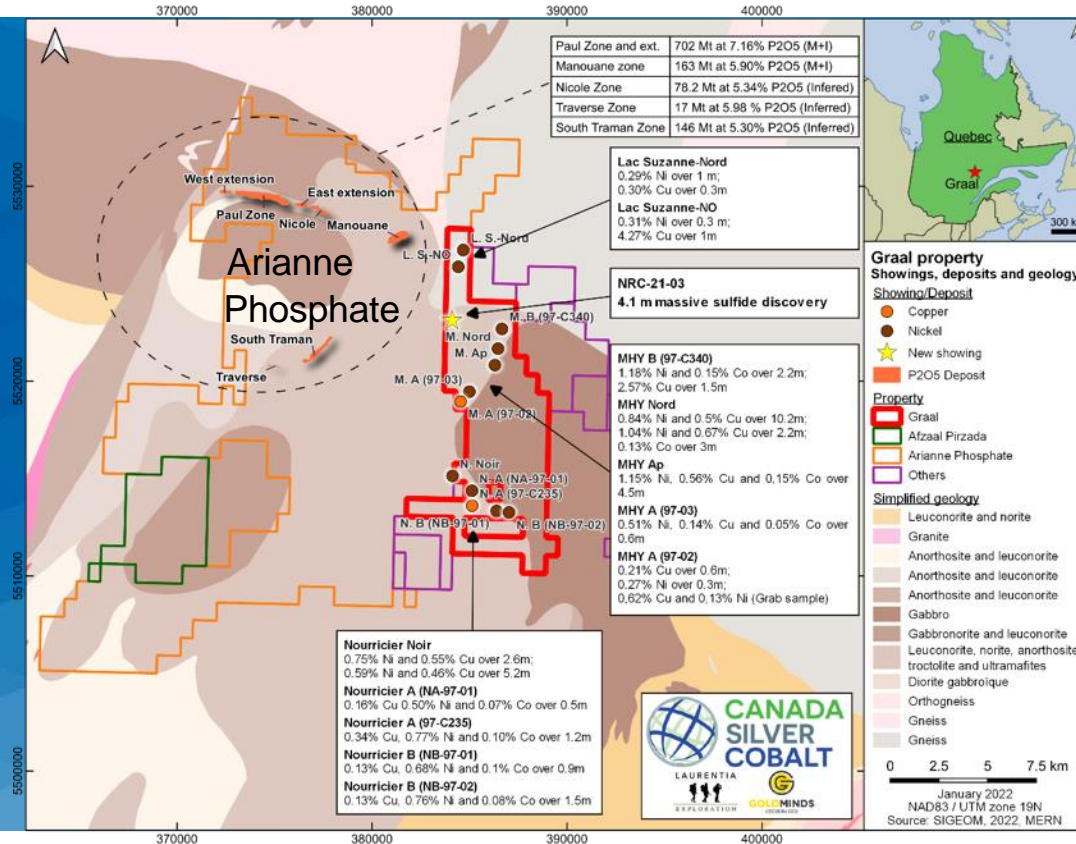
- Evidence points to a **large deposit on the 6,113 hectares** and the **potential for a world-class battery metals camp**
- **6 km electromagnetic strike length with mineralization. Near-surface copper, nickel, and cobalt from drilling** (see map)
- Recent drilling intersected **massive and semi-massive sulphides** – up to **2.08% nickel** over 0.5m and **3.75% copper** over 0.6m, plus minor amounts of **cobalt, platinum and palladium**.
- Historical drilling had **previously indicated a potential target of near-surface tonnage of 30 to 60 million tonnes¹** with a grade range of 0.60-0.80% nickel, 0.30-0.50% copper and 0.10-0.15% cobalt in the MHY section along the 6 km EM corridor. The **tonnage excludes newly discovered mineralization and does not take into account any potential at depth**

(1) Conceptual in nature. There has been insufficient exploration to define resource.

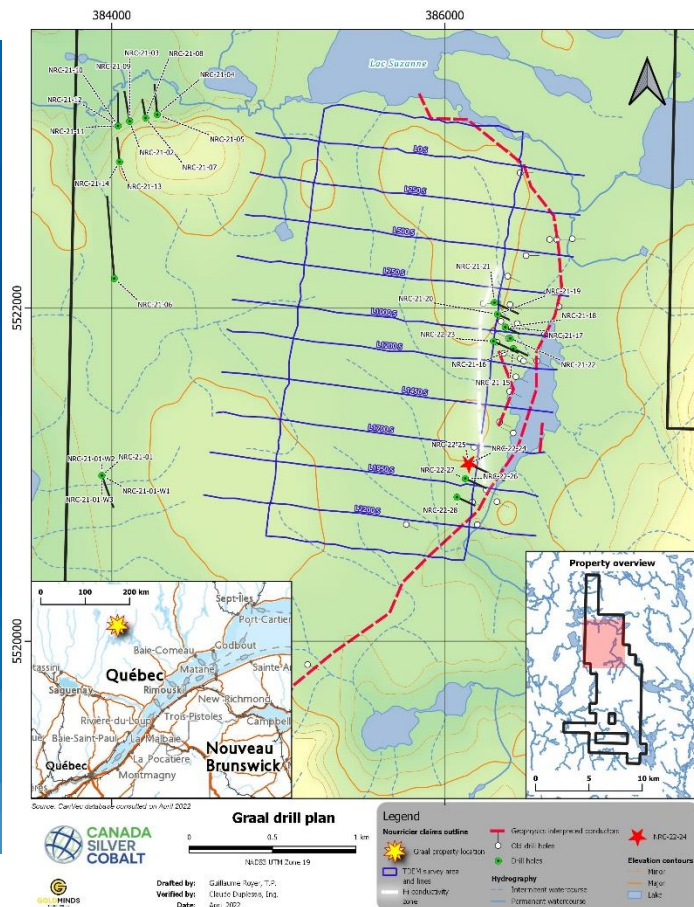
For details, see news releases November 24 and 29, 2021 and Jan. 10, Mar. 3, April 4, June 13 and 27 and Aug. 15, 2022.



GRAAL Area Map – Located Close to Arianne Phosphate Property



GRAAL Map of 2021-2022 Drill Holes and Geophysical Survey Area



FL-TDEM Survey identified a geophysical anomaly 1,700m long by 850m wide characterized by high conductance

Conducted bore hole electromagnetic surveys on selected targets

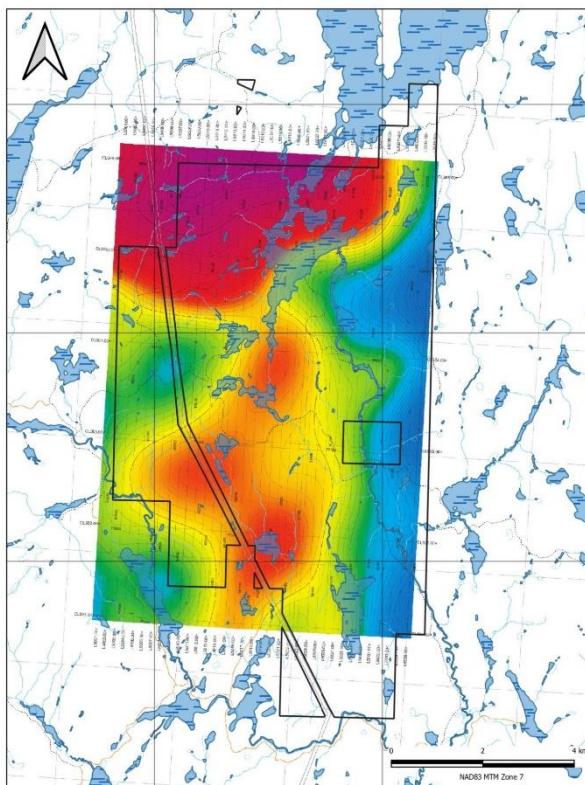
FL-TDEM Grid (blue lines)

High Conductivity Zone (white line)

FL-TDEM = Fixed Loop Time Domain
Electromagnetic Survey

Lowney-Lac Edouard Property Large Bouguer Gravity Anomaly

- Past geophysical survey indicated a **large Bouguer gravity anomaly**.
- New VTEM Survey conducted with Rio Tinto and Brunswick Exploration which have adjacent properties (see map)
- To identify near surface conductors to guide field work and possibly lead to drill program.



Source: Geophysical survey property of Canada Silver Cobalt Inc. SIGDEM database consulted in March 2022.



TERRAIN CORRECTED BOUGUER GRAVITY

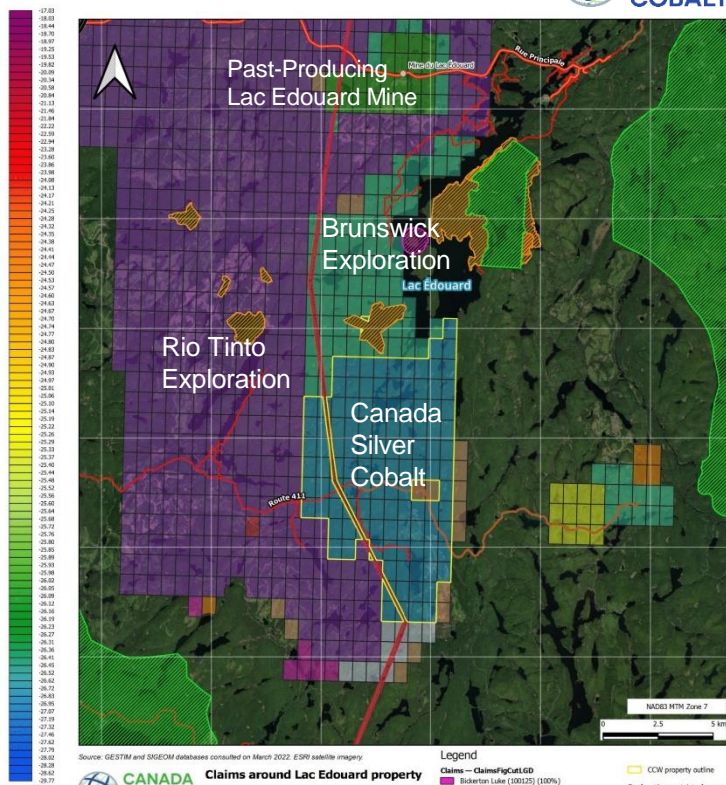
Client: Canada Silver Cobalt Works Inc.

Drafted by: Guillaume Royer, T.P.

Date: March 2022

Legend

Lac Edouard property outline



Source: GESTM and SIGDEM databases consulted on March 2022. ©SRI satellite imagery.



Claims around Lac Edouard property

Client: Canada Silver Cobalt Works Inc.

Drafted by: Guillaume Royer, T.P.

Date: March 2022



Legend

- Claims — Claims/Cut-Off**
 - Bickerton Lake (100125) (100%)
 - Bouchard Denis (100091) (100%)
 - Brunswick Exploration inc. (100062) (100%)
 - Canada Silver Cobalt Works Inc. (100084) (100%)
 - Resources Technic inc. (s.e) (100037) (100%)
 - Exploration Médiane inc. (02741) (100%)
 - Fortis Denis (13581) (100%)
 - Fortin Normand (1009) (100%)
 - Favard Pierre (04620) (100%)
 - Rio Tinto Exploration Canada inc. (04806) (100%)
- CCW property outline**
- Exploration restricted areas**
 - Power lines
 - Ecological reserve
 - Temporary ecological reserve
 - Conditional
- Roads**
 - Collector
 - Local Street
 - Logging road

Canada Silver Cobalt Works Inc.

TSX-V **CCW** | OTCQB **CCWOF** | FRANKFURT **4T9B**

Shares Outstanding ¹	219,680,135
Market Cap (@\$0.09/share) ²	\$20 million
Warrants ¹ (\$0.11 - \$0.65)	98,877,495
Options ¹ (\$0.21 - \$0.70)	11,428,335
Fully Diluted ¹	329,985,965



(1) Share numbers approximate, as of November 1, 2022

(2) Share price as November 2, 2022.

TWO POTENTIAL SILVER-COBALT MINES WITH PERMITTED MILLING FACILITY

- **Castle East** – Highest silver grades in the world with ramp planned to extract the rich veins and also drill underground to expand the deposit
- **Castle Mine:** – Former silver-cobalt mine with underground access and potential to resume mining
- **Eby-Otto Gold Project:** – Exploration underway
- **TTL High-Grade Mill:** – Fully permitted to process high-grade material into silver dore bars

BATTERY METALS WITH PROCESSING TECHNOLOGY

- **Graal** – Massive sulphides discovery in Northern Quebec with nickel, copper, cobalt, platinum and palladium
- **Re-2Ox** – ESG-compliant, low-carbon hydrometallurgical process to produce cobalt and nickel sulphates for EV battery producers and extract other critical metals
- **Coniagas Battery Metals Inc.** – Subsidiary to hold Graal battery metals property in preparation for potential monetization



Ag

Silver for solar panels/electronics



Ni

Co

Nickel and Cobalt for EV batteries



Cu

Copper for EV wiring



CANADA
SILVER
COBALT

HIGHEST SILVER GRADES IN THE WORLD

MATT HALLIDAY P.Geo
President and COO

matt@canadasilvercobaltworks.com
+1 514-708-7390

WAYNE CHEVELDAYOFF
Corporate Communications

waynechevelayoff@gmail.com
+1 416-710-2410

www.canadasilvercobaltworks.com

Critical Battery Metals
Green Re-20x Processing Technology

Mining Office

2875 Ave. Granada
Rouyn-Noranda,
QC J9Y 1J1

T +1 819-797-4144
F +1 819-762-2306

