



# RELEVANT GOLD

CSE: RGC





# CAUTIONARY STATEMENT

CSE: RGC

This presentation contains certain statements that constitute forward looking information within the meaning of applicable securities laws. These statements relate to future events of Relevant Gold Corp. (“Relevant” or “the Company”). Any statements that express or involve discussions with respect to predictions, expectations, beliefs, plans, projections, objectives, assumptions or future events or performance (often, but not always, using words or phrases such as “seek”, “anticipate”, “plan”, “continue”, “estimate”, “expect”, “forecast”, “may”, “will”, “project”, “predict”, “potential”, “targeting”, “intend”, “could”, “might”, “should”, “believe”, “outlook” and similar expressions) are not statements of historical fact and may be forward looking information. Forward looking information in this presentation includes, but is not limited to, statements with respect to successfully consolidating further land packages, Relevant’s ability to raise sufficient capital to fund exploration programs and its obligations under property agreements, seek a listing on a recognized stock exchange, drilling plans, financing success, discovery and production of minerals, metal prices and currency exchange rates, timing of technical reports and drill results, corporate and technical objectives, permitting success and relationships with stakeholders.

Forward looking information involves known and unknown risks, uncertainties and other factors which may cause the actual results, performance or achievements of the Company to be materially different from any future results, performance or achievements expressed or implied by the forward-looking information. Such risks include, among others, the inherent risk of the mining industry; adverse economic and market developments; the risk that the Company will not be successful in completing additional acquisitions; risks relating to the estimation of mineral resources; the possibility that the Company’s estimated burn rate may be higher than anticipated; risks of unexpected cost increases; risks of labour shortages; risks relating to exploration and development activities; risks relating to future prices of mineral resources; risks related to work site accidents, risks related to geological uncertainties and variations; risks related to government and community support of the company’s projects; risks related to global pandemics and other risks related to the mining industry. The Company believes that the expectations reflected in such forward-looking information are reasonable, but no assurance can be given that these expectations will prove to be correct and such forward-looking information should not be unduly relied upon. These statements speak only as of the date of this presentation. The Company does not intend, and does not assume any obligation, to update any forward-looking information except as required by law.

This document does not constitute an offer to sell, or a solicitation of an offer to buy, securities of the Company in Canada, the United States or any other jurisdiction. Any such offer to sell or solicitation of an offer to buy the securities described herein or during the presentation will be made only pursuant to subscription documentation between the Company and prospective purchasers. Any such offering will be made in reliance upon exemptions from the prospectus and registration requirements under applicable securities laws, pursuant to a subscription agreement to be entered into by the Company and prospective investors.

The scientific and technical contents of this presentation have been approved by Mr. Brian C. Lentz, CPG, Chief Exploration Officer of the Company, who is a “Qualified Person” as defined by Canadian National Instrument 43-101 (Standards of Disclosure for Mineral Projects). Mr. Lentz is not independent of the Company.







# STRONG VALUE PROPOSITION

CSE: RGC

- ✓ EXCELLENT TEAM WITH PROVEN RECORD OF VALUE CREATION
- ✓ UNLOCKING A POTENTIAL MEGA-DISTRICT; ABITIBI-LIKE POTENTIAL
- ✓ VERY LARGE LAND POSITION MULTIPLE PERMITTED DRILL TARGETS
- ✓ TIGHTLY HELD BY MANAGEMENT AND INSIDERS
- ✓ ABUNDANT VISIBLE GOLD AT SURFACE; ASSAYS RETURNED UP TO 5.4 OZ/TON AU
- ✓ 2ND MOST FAVORABLE MINING POLICIES GLOBALLY

\*FRASER INSTITUTE 2020 POLICY PERCEPTION INDEX SCORE

RELEVANT **GOLD**





# Capital Structure

CSE: RGC

## Overview

- Oversubscribed \$5M Private Placement in Q1 2022
- Raised \$5.671M @ \$0.35 CAD
- August 11, 2022 public listing on the CSE:RGC
- Non-offering direct listing
- Market Cap range \$17-22M

## Capitalization

Issued & Outstanding:	50,098,746
Reserved for Issuance:	15,750,000

RELEVANT **GOLD**





# BOARD OF DIRECTORS

CSE: RGC



**DR. PETER MEGAW, PHD**

CURRENT ROLE  
CEO, Index Inc.

EDUCATION  
Ph.D., Economic Geology

INDUSTRY TENURE  
40+ years

#### MILESTONES

2017 Thayer Lindsley  
Award Winner  
Co-founder, MAG Silver Corp.



**RONALD L. PARRATT**

CURRENT ROLE  
Director, Relevant Gold

EDUCATION  
M.Sc., Economic Geology

INDUSTRY TENURE  
40+ years

#### MILESTONES

Co-founder, Auex Ventures Inc.  
Fellow, Society of Economic  
Geologists



**SARAH WEBER, P.GEO**

CURRENT ROLE  
CEO, C3 Alliance Corp.

EDUCATION  
P.Geo, MBA

INDUSTRY TENURE  
20+ years

#### MILESTONES

Former Comms. Director, AME BC  
ESG Specialist  
NA exploration expertise



**ROB BERGMANN**

CURRENT ROLE  
CEO, Relevant Gold

EDUCATION  
B.Sc., Geology

INDUSTRY TENURE  
13+ years

#### MILESTONES

Co-founder, BRI Group  
40+ NA exploration projects  
Major international clientele



**BRIAN LENTZ, CPG**

CURRENT ROLE  
CXO, Relevant Gold

EDUCATION  
B.Sc., Geology, P.Geo

INDUSTRY TENURE  
13+ years

#### MILESTONES

Co-founder, BRI Group  
Certified Professional Geologist  
Qualified Person - 43-101 Standard





# LEADERSHIP TEAM

CSE: RGC



**ROB BERGMANN**★

CEO  
B.Sc. Geology



**BRIAN LENTZ, CPG**★

CXO  
B.Sc. Geology



**MAHESH LIYANAGE**

CFO  
CPA, CA



**SAM SIEBENALER**

VP CORP. DEVELOPMENT  
B.Sc., M.Sc. Economic Geology  
\*Military Veteran



**KRIS JENSEN**

VP CORP. COMMUNICATIONS  
B.Sc., Journalism  
\*Military Veteran

## QUALIFICATIONS & TRACK RECORD



## PAST EXPERIENCE

**RioTinto**



**GLENCORE**





# TECHNICAL PROWESS

CSE: RGC

## Multidisciplinary Scientific Advisory Team:

► Pioneering research & applied theory in N.A. gold exploration



**DR. DEAN PETERSON, PhD**

Chief Geologist, Big Rock Exploration

### EXPERIENCE

**30+**  
YEARS

### EXPERTISE

**ABITIBI GOLD  
EXPERT**



**DR. KEVIN CHAMBERLAIN, PhD**

Research Professor, Univ. of Wyoming

**30+**  
YEARS

**TECTONIC  
RECONSTRUCTION  
& AGE DATING**



**DR. STEVEN ALLARD, PhD**

Professor of Geoscience, Winona State Univ.

**30+**  
YEARS

**STRUCTURAL GEOLOGY  
& PETROLOGY**



**DR. THOMAS CAMPBELL, PhD**

Principal Consultant at Scientific Endeavors

**30+**  
YEARS

**OROGENIC GOLD  
SYSTEMS & ORE  
MINEROLOGY**







CSE: RGC

# WYOMING

THE UNEXPLORED ABITIBI GOLD BELT

RELEVANT **GOLD**







# UNLOCKING A POTENTIAL MEGA-DISTRICT



## ABITIBI IS A PROVEN WORLD-CLASS GOLD BELT

- The Abitibi Gold Belt is one of the richest in the world: >230M oz. of gold produced over last 100+ years



## NEW MODEL INDICATES CONNECTION TO ABITIBI

- Recent exploration shows strong indicators of Abitibi gold and shear belts once connected to present day Wyoming (2.65 Billion years ago)



## EXTENSIVE RECONNAISSANCE PROVES THE MODEL

- Relevant Gold has confirmed this new model through widespread regional reconnaissance work



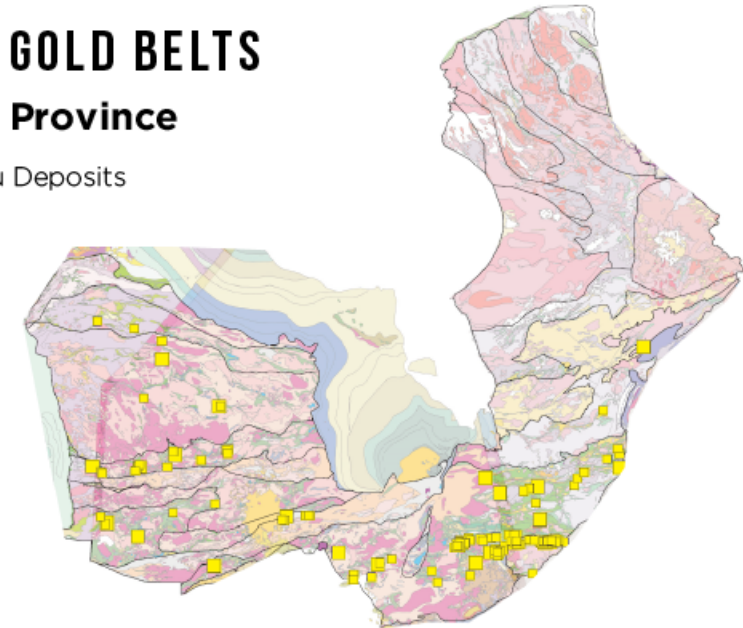


# NEW THINKING = NEW OPPORTUNITIES

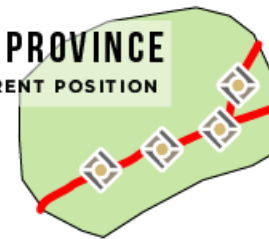
EXPLORATION CRITERIA	WYOMING	ABITIBI
Mineralization coincides with supercontinent cycle	✓	✓
Open and permittable land	✓	✓
Correct age of rocks	✓	✓
Large scale structures	✓	✓
Orogenic, VMS, Cu-Ni-PGE	✓	✓
High grade gold and base metals	✓	✓
Historic exploration	✓	✓
Recent modern exploration	?	✓
Historical Mining	✓	✓
World Class Deposits	?	✓

## ABITIBI GOLD BELTS Superior Province

■ Major Au Deposits



WY PROVINCE  
CURRENT POSITION



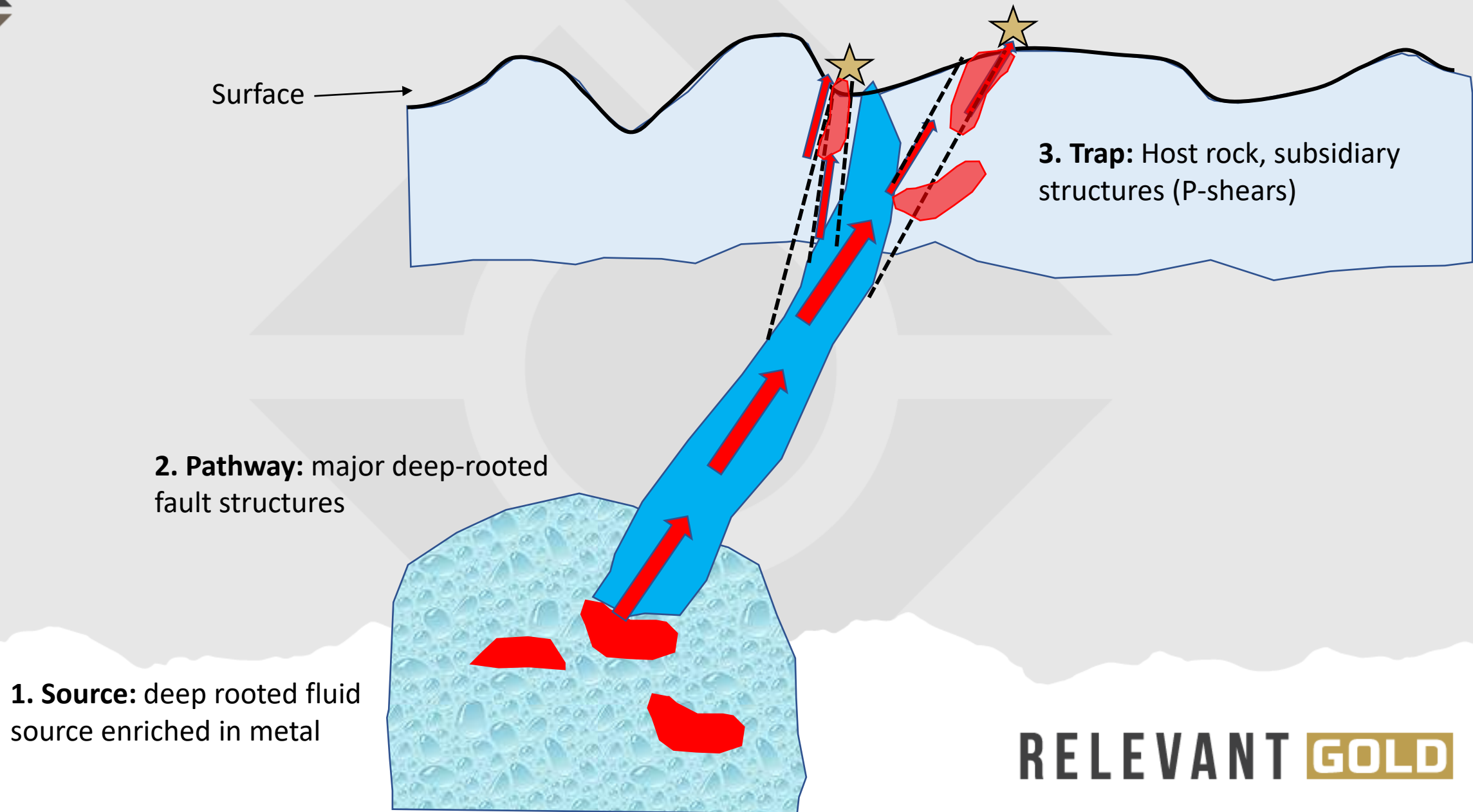
### 2100 Ma Rifting

Moved WY Province to present day position.





# OROGENIC LODE GOLD DEPOSIT FORMATION





# APPLES TO APPLES

How We Define **District-Scale** By Comparing Land Package Size of Similar Known Orogenic Shear-Hosted Gold Deposits

## HOMESTAKE

X,XXX ACRES/KM2



## HEMLO

XXX ACRES/KM2



## ROBERTO/ELEONORE

XX ACRES/KM2



\* APPROXIMATE VALUES



The Relevant Gold portfolio includes **5 district-scale land packages**, each with a footprint larger than the Homestake mine\*

**x5**

## RELEVANT GOLD

POTENTIAL MEGA-DISTRICT  
CAMP-SCALE LAND PACKAGE

**42,500+**

ACRES OF ACTIVE BLM  
MINING CLAIMS

ABITIBI-LIKE

**Au** POTENTIAL

AVERAGE COMPETITOR  
LAND PACKAGE

RELEVANT **GOLD**





# GRADE IS KING

Limiting Risk With Massive Potential Reward



## ARCHIE'S RULE

To be economic, a deposit must have a recovered value of **2X** the all-in operating costs

### WHY THIS MATTERS

Exploration in the U.S. requires discipline around Archie's Rule as high-grades are needed to overcome the higher costs of exploring in the U.S.

## OUR FOCUS

*High-grade district-scale precious metal opportunities*



TARGET

Orogenic, shear-hosted deposits have the second most identified gold deposits in excess of 10 million ounces

Orogenic, shear-hosted deposits can host very high grades, allowing profitable operations in a variety of market conditions

► HIGH GRADE = HIGH MARGIN





# EXPLORATION STRATEGY

1

Generate district-scale opportunities with a ***New Eyes On Old Rocks®*** approach

2

Technical reconnaissance for target validation and acquisition

3

Conduct systematic exploration for drilling and discovery



**MAKE NEW  
DISCOVERIES!**

**RELEVANT GOLD**







# WHY WYOMING?

CSE: RGC

## ✓ Abitibi Connection

- ✦ Shear-hosted gold mineralization throughout WY was connected to the Abitibi shear zone belts of the Superior Province during gold endowment, approximately 2.65 billion years ago. This connection opens WY up to great potential for Abitibi-scale deposits yet to be discovered

## ✓ Archean belts with age relationships to Abitibi

- ✦ Historically mined but under-explored districts
- ✦ Orogenic, shear-hosted lode gold
- ✦ VMS gold + copper + base metals

## ✓ Very high-grade gold proven

- ✦ 2021 RG rock chip samples graded at >5 oz./ton gold, abundant coarse visible gold at surface

## ✓ Streamlined permitting

- ✦ Experience with Federal, State and Local jurisdictions; 2nd best mining jurisdiction globally

## ✓ Mining-friendly region with historic mining culture

- ✦ WY is least populated state in U.S., founded on resource development.; low social and envr. risks

## Portfolio of Assets

Camp-scale land package *with* 5 district-scale projects

L

LEWISTON

GB

GOLDEN  
BUFFALO

SC

SHIELD-  
CARRISA

WF

WINDY  
FLATS

BP

BRADLEY  
PEAK

## Land Holdings

- ✦ 5 district-scale land packages
- ✦ > 42,500+ acres of active BLM mining claims
- ✦ 58 acres of patented historic mining claims
- ✦ 12+ drilling targets defined
- ✦ Pipeline of discovery opportunities

## Technical Advancements

- ✦ Drill and trenching permits-in-hand - June 2021
- ✦ Surface rockchip samples exceed 5 oz/ton gold
- ✦ Ground mag survey completed at Lewiston - 2021
- ✦ Drill targeting completed at Golden Buffalo project
- ✦ Confirmed coarse visible gold at surface
- ✦ Mapped multiple mineralized shear zones with 2-10 km strike length





# OREGON TRAIL STRUCTURAL BELT

CSE: RGC



\*Figure from Chamberlain et. al. 2006

## TECHNICAL SUMMARY

Craton scale structural zone

Same age and orientation as belts in Superior

- Great Lakes Tectonic Zone
- Abitibi-Wawa fault zones

Crosscutting rock types known to host Orogenic and VMS deposits

Historic gold mines and prospects present throughout this structural zone

Oregon Trail Structural Belt (OTSB) 2650 Ma Tectonism





# SOUTH PASS GOLD CAMP OVERVIEW

CSE: RGC

## PROJECT SUMMARY

4 District-scale projects



LEWISTON



GOLDEN  
BUFFALO



SHIELD-  
CARRISA



WINDY  
FLATS

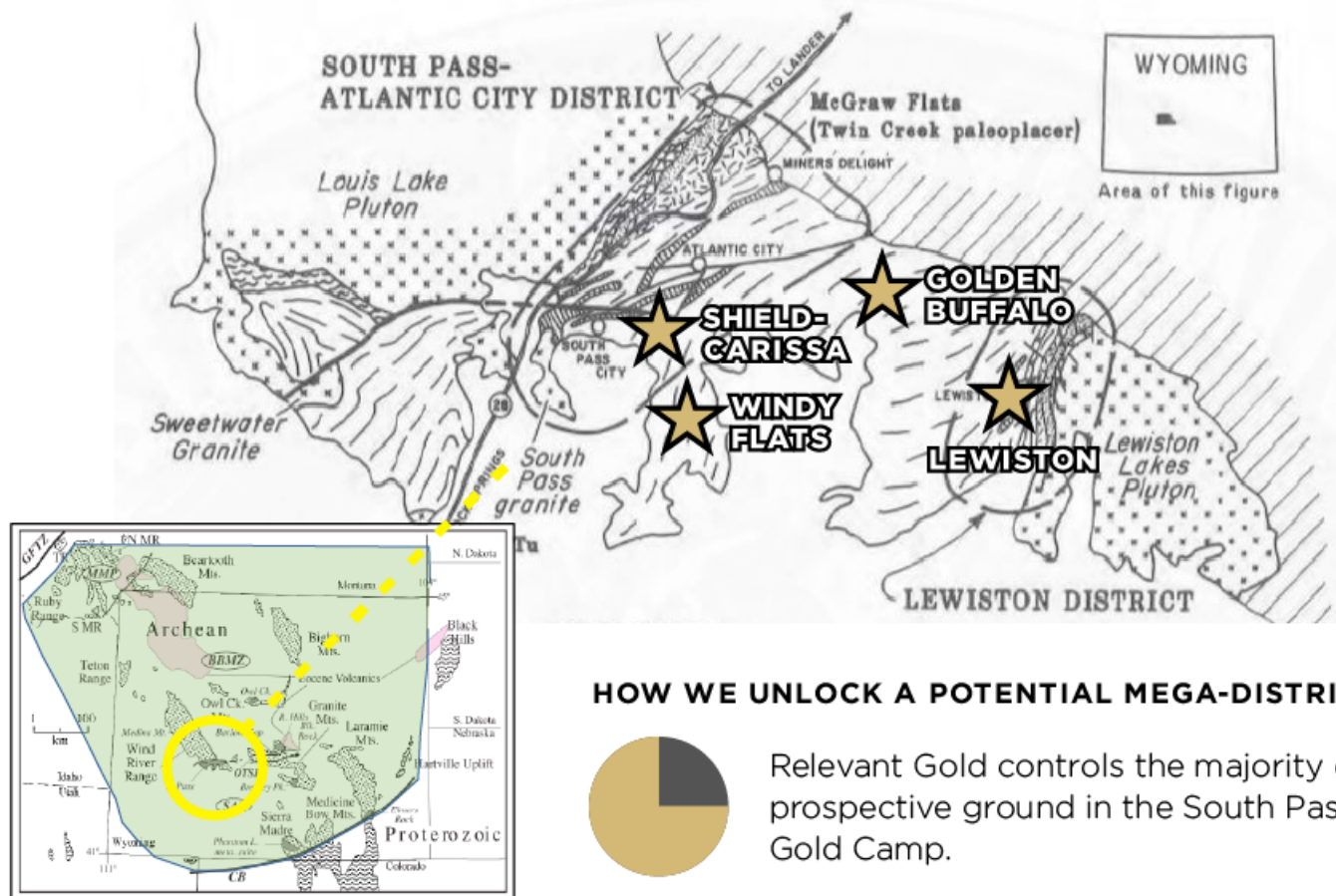
2021 Relevant Gold sample at 5 oz./ton gold  
2019 Relevant Gold sample at 2 oz./ton gold  
Historic assays reported up to 1,690 oz./ton

Abundant course gold visible at surface

Multiple initial drill targets established, permits in hand  
for Lewiston and Golden Buffalo

Advanced exploration in-progress

Drilling at Lewiston and Golden Buffalo upon IPO listing





# CONTROLLING THE CAMP

Understanding the Abitibi to Guide  
Exploration and Acquisitions

## WHAT LESSONS CAN THE ABITIBI TEACH US?

99%

NEARLY ALL OF ABITIBI GOLD FOUND  
NEAR **PRIMARY STRUCTURES**

Almost all of the gold produced in the Abitibi camps  
was **found within 0-6 km of major structures**.  
e.g. Porcupine-Destor Fault in Abitibi Belt

98%

NEARLY ALL OF ABITIBI GOLD HOSTED  
IN **REIDEL P-SHEAR STRUCTURES**

Nearly all of the gold produced in the Abitibi camps  
(106.25 million oz.) was found in P-shear structures,  
**NOT** R-shear structures.

## THE ABITIBI BELT

TIMMINS CAMP  
KIRKLAND LAKE CAMP  
HEMLO GOLD CAMP

110M+

TOTAL OUNCES OF GOLD PRODUCED

Source: Peterson, Dean. Ph.D. Dissertation, 2001.





# CONTROLLING THE CAMP

Understanding the Abitibi to Guide Exploration and Acquisitions in South Pass Gold Camp

## HOW WE APPLIED THESE ABITIBI INSIGHTS:



### SECURE OPPORTUNITY AT SCALE

Relevant Gold's South Pass Gold Camp fits all of the size comparison criteria for an Abitibi-style deposit of multi-million ounce potential.



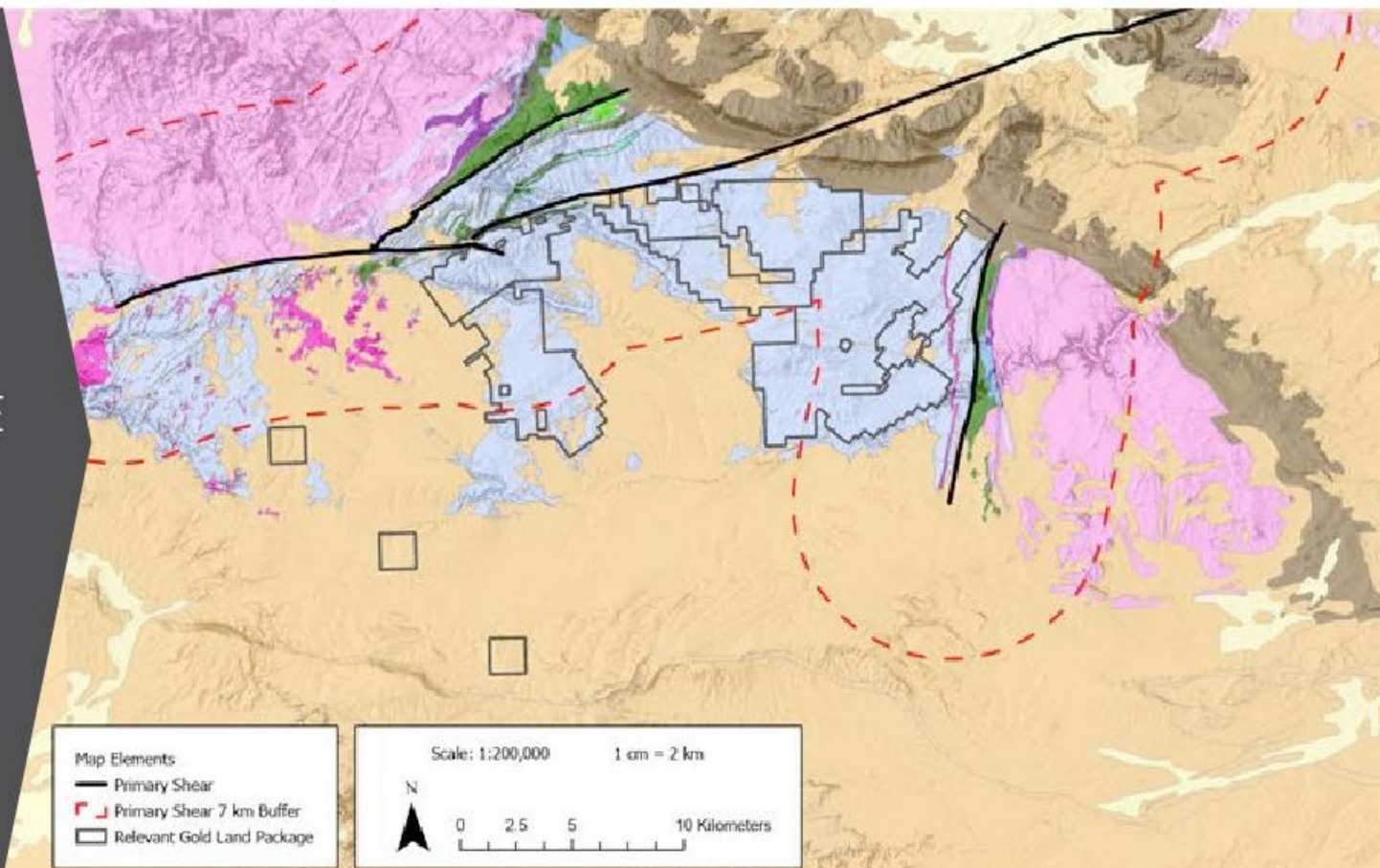
### SECURE BUFFER AROUND PRIMARY SHEAR ZONE

Relevant Gold's South Pass Gold Camp consists of 4 district-scale projects that all fall within a 6 km buffer zone of primary structures, consistent with Abitibi Belt.



### SECURE TARGETS WITH P-SHEAR STRUCTURES

Relevant Gold's South Pass Gold Camp consists of Reidel P-shear structures in favorable host rocks, and abundant mineralized structures within the favorable Miner's Delight formation, congruent with the Abitibi Belt gold camps.







# GOLDEN BUFFALO

HIGH-GRADE SHEAR-ZONE HOSTED GOLD

RELEVANT **GOLD**





# GOLDEN BUFFALO HIGHLIGHTS



## HIGH-GRADE+

ABUNDANT COURSE  
GOLD AT SURFACE



## DISTRICT-SCALE

OPEN FOR EXPANSION  
IN ALL DIRECTIONS



## SHEAR-HOSTED

500+ OZ. GOLD  
HISTORICALLY PRODUCED  
FROM 20M TRENCH



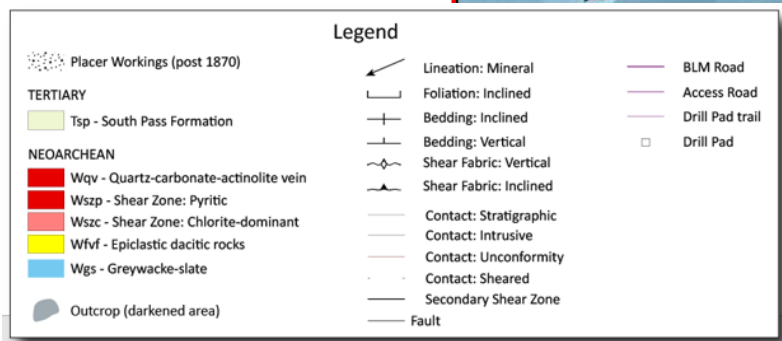
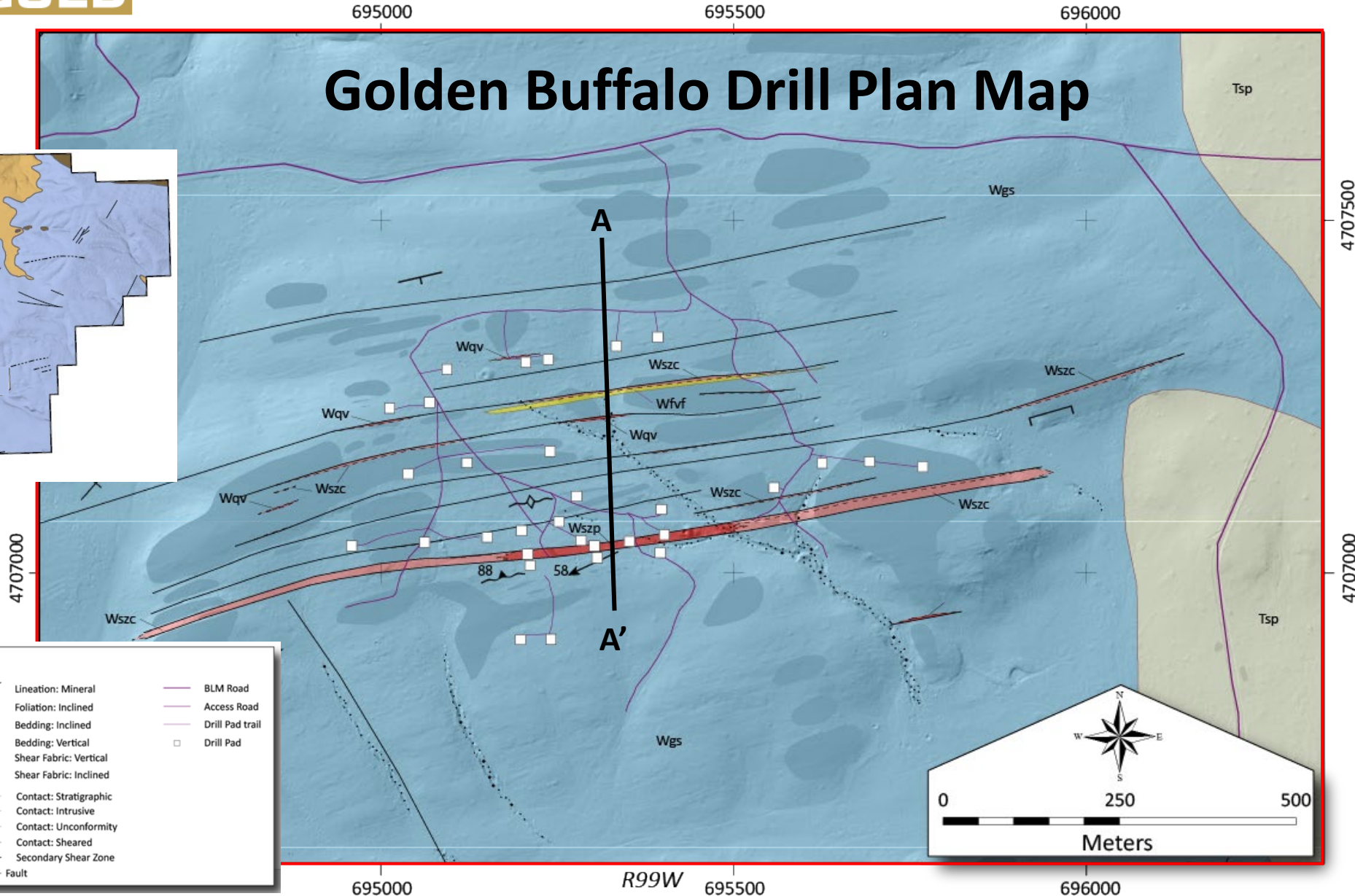
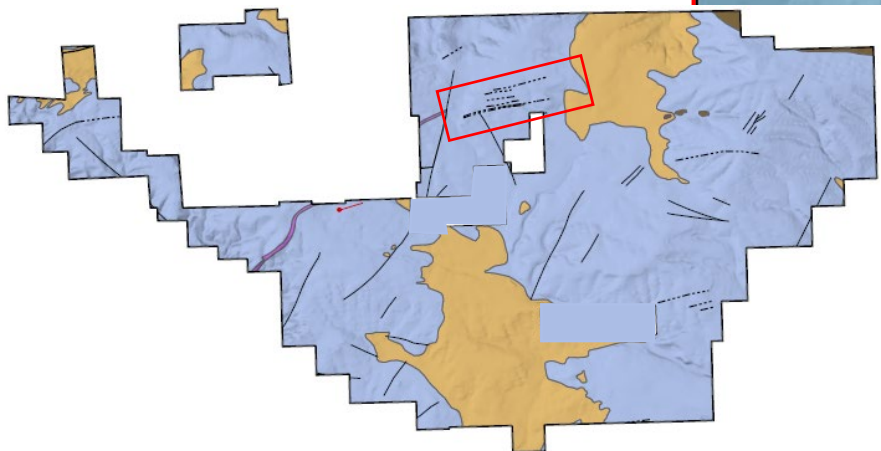
## DRILL-READY

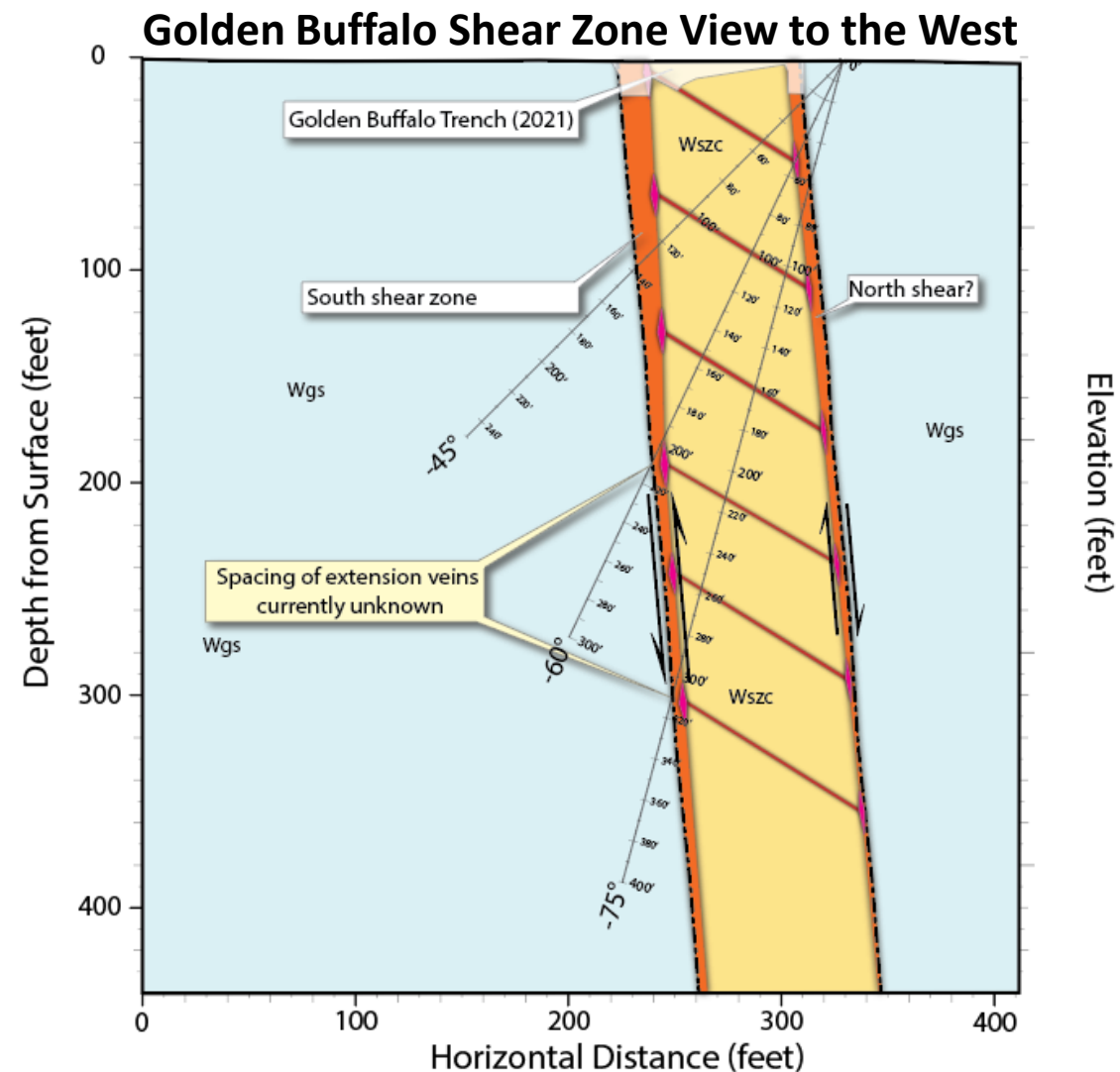
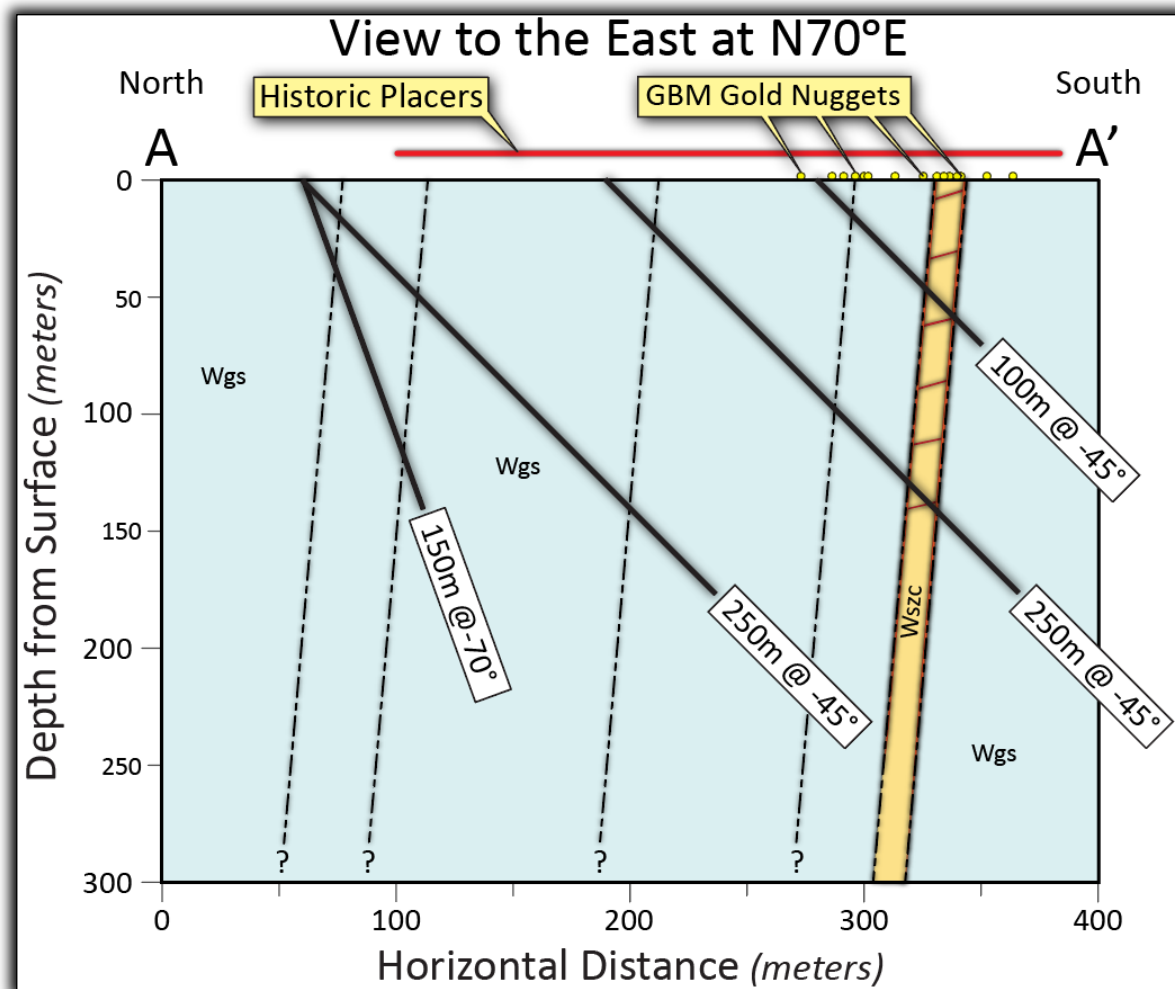
ACTIVE MINE SITE;  
ALREADY PERMITTED





# Golden Buffalo Drill Plan Map







# MINERALS ARE THE FUTURE®

*Our Vision For The Next Generation*



OUR VISION

*Unlocking A Potential Mega-District*

## HOW WE'RE EQUIPPED FOR SUCCESS

Innovative exploration team focused on multi-million ounce orogenic shear-hosted Gold and Silver discoveries in the USA

Backed by science, proven ability to execute, exploration and discovery specialists, deep market knowledge

**5** district-scale (158 km<sup>2</sup>) near-surface, high-grade properties in the second most favorable mining jurisdiction globally\* Fraser Inst. Report on PPI score for global exploration/mining investment

## HOW OUR APPROACH SETS US APART

### **NEW EYES ON OLD ROCKS®**

Scientific foundation opening up a new Abitibi-like district in WY

Access to proprietary and proven prospect generation AI

Advanced modern exploration group leads technical development

Ability to rapidly advance early stage prospects to drill testing

Extensive background in U.S. exploration, permitting, environmental and mining compliance



**RELEVANT GOLD**



CSE: RGC

# JOIN US FOR THE NEXT BIG DISCOVERY

[WWW.RELEVANTGOLDCORP.COM](http://WWW.RELEVANTGOLDCORP.COM)

 @RELEVANTGOLDCORP

FOR QUESTIONS & INFORMATION, PLEASE CONTACT:

**KRIS JENSEN**  
Investor Relations

kris@bri.group  
(651) 253-2659

**RELEVANT GOLD**