



New Mines for a New World

CORPORATE PRESENTATION



ROYAL ROAD
MINERALS

TSXV : RYR
FRANKFURT : RLU

Cautionary statement

This presentation contains projections and forward-looking information about Royal Road Minerals Ltd ("Royal Road" or the "Company") that involve various risks and uncertainties regarding future events. Such forward-looking information can include, without limitation, statements based on current expectations involving a number of risks and uncertainties and are not guarantees of future performance of the Company. These risks and uncertainties could cause actual results and the Company's plans and objectives to differ materially from those expressed in the forward-looking information. Actual results and future events could differ materially from those anticipated in such information. These and all subsequent written and oral forward-looking information are based on estimates and opinions of management on the dates they are made and expressly qualified in their entirety by this notice.

The Company assume no obligation to update forward-looking information should circumstances or management's estimates or opinions change. This presentation does not constitute an offer to sell or a solicitation of an offer to buy any securities of the Company within the United States or otherwise.

What **we** do

Royal Road is a mineral exploration company with a focus on discovering tier-one gold and copper deposits in Colombia and Nicaragua

Royal Road is committed to a new model of exploration and mining for a new world, one which reduces environmental impact and benefits communities. We seek to push the boundaries of sustainability performance – identifying new approaches and trialing innovative initiatives to change the mining paradigm



Where we work

Nicaragua

Operating under a 50-50 Strategic Alliance with HEMCO-Mineros Nicaragua, we are the largest exploration title holder in-country, currently drilling the Caribe, Nueva America and Murcielago projects

Colombia

Claimed a large application package in southern Colombia, acquired AngloGold-Ashanti's exploration assets in 2019. One of the largest title and application holders in-country, currently drilling Güintar copper-gold porphyry



We are explorers



...and recognized social & environmental performers

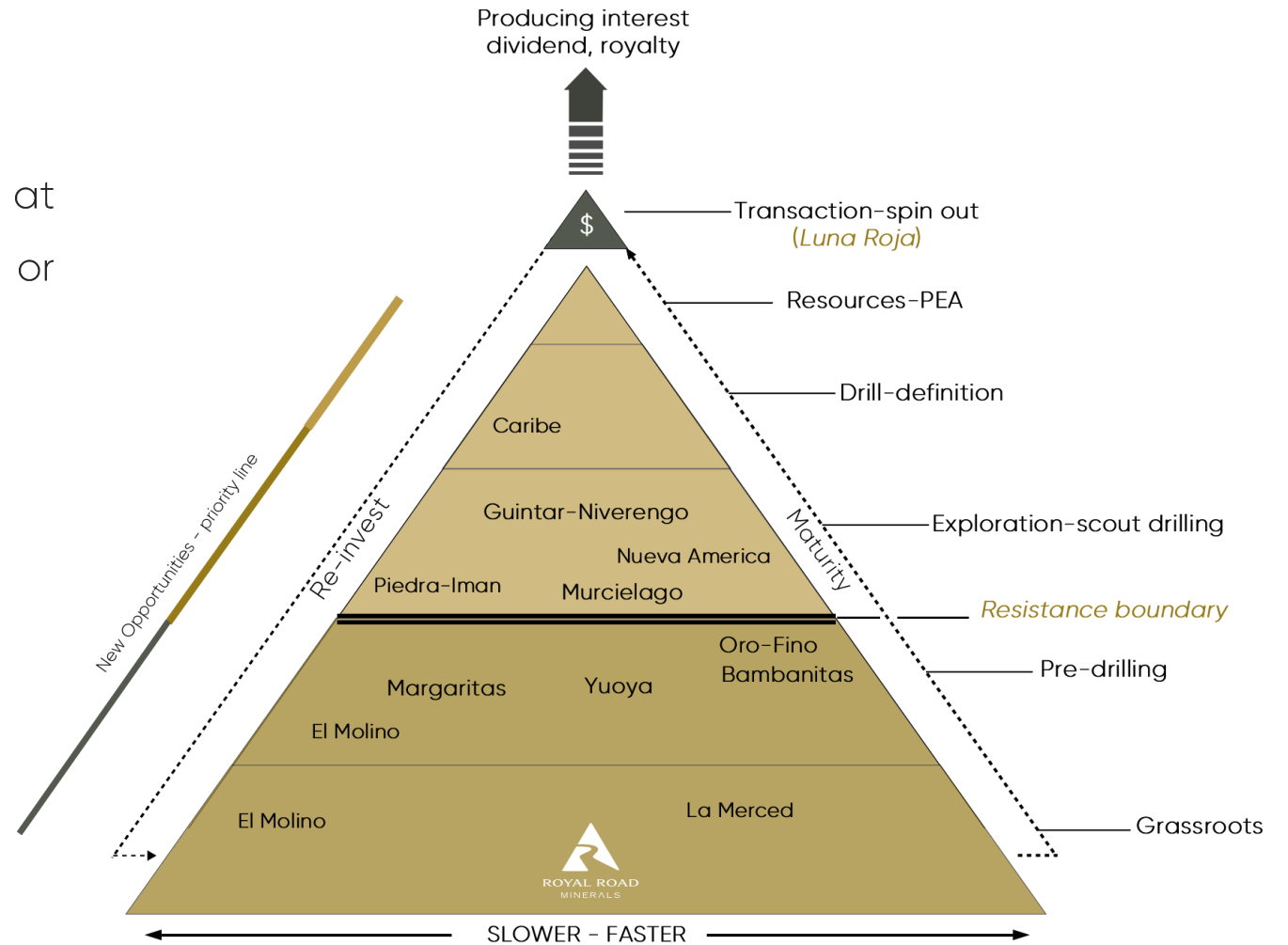


Value proposition

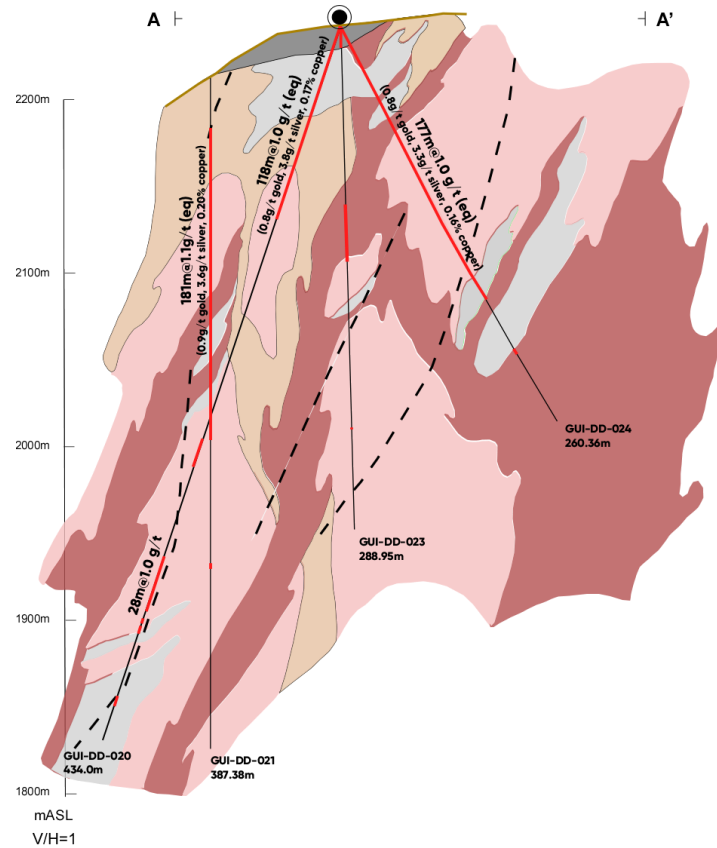
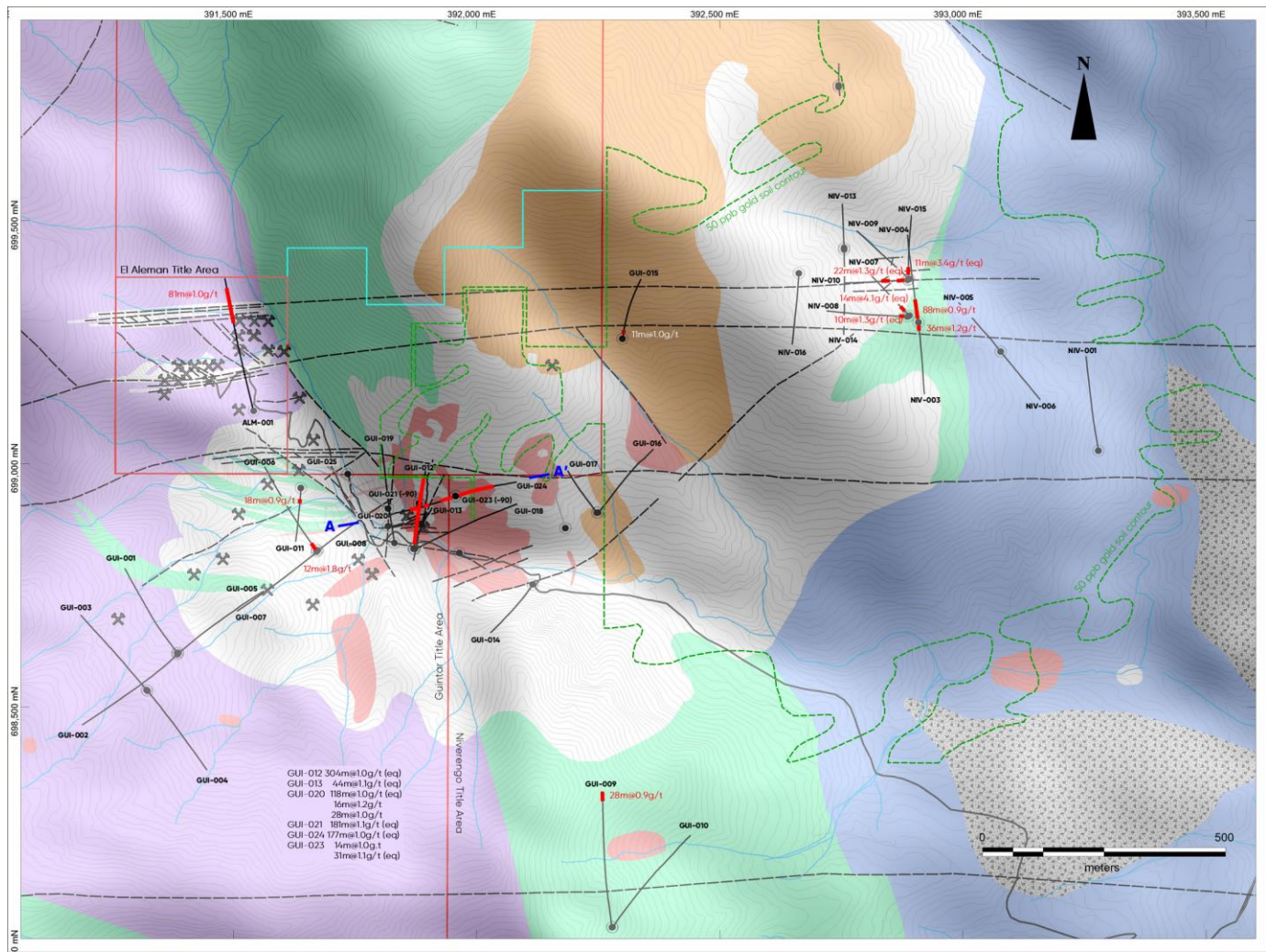
Multiple high-quality gold and copper projects at different development stages with various exit or value-adding opportunities

Recent Transaction Example: Sale of 50% of Luna Roja

Gold-Skarn project in Nicaragua sold for
USD \$22.5M and 1.25% NSR



Güintar-Niverengo

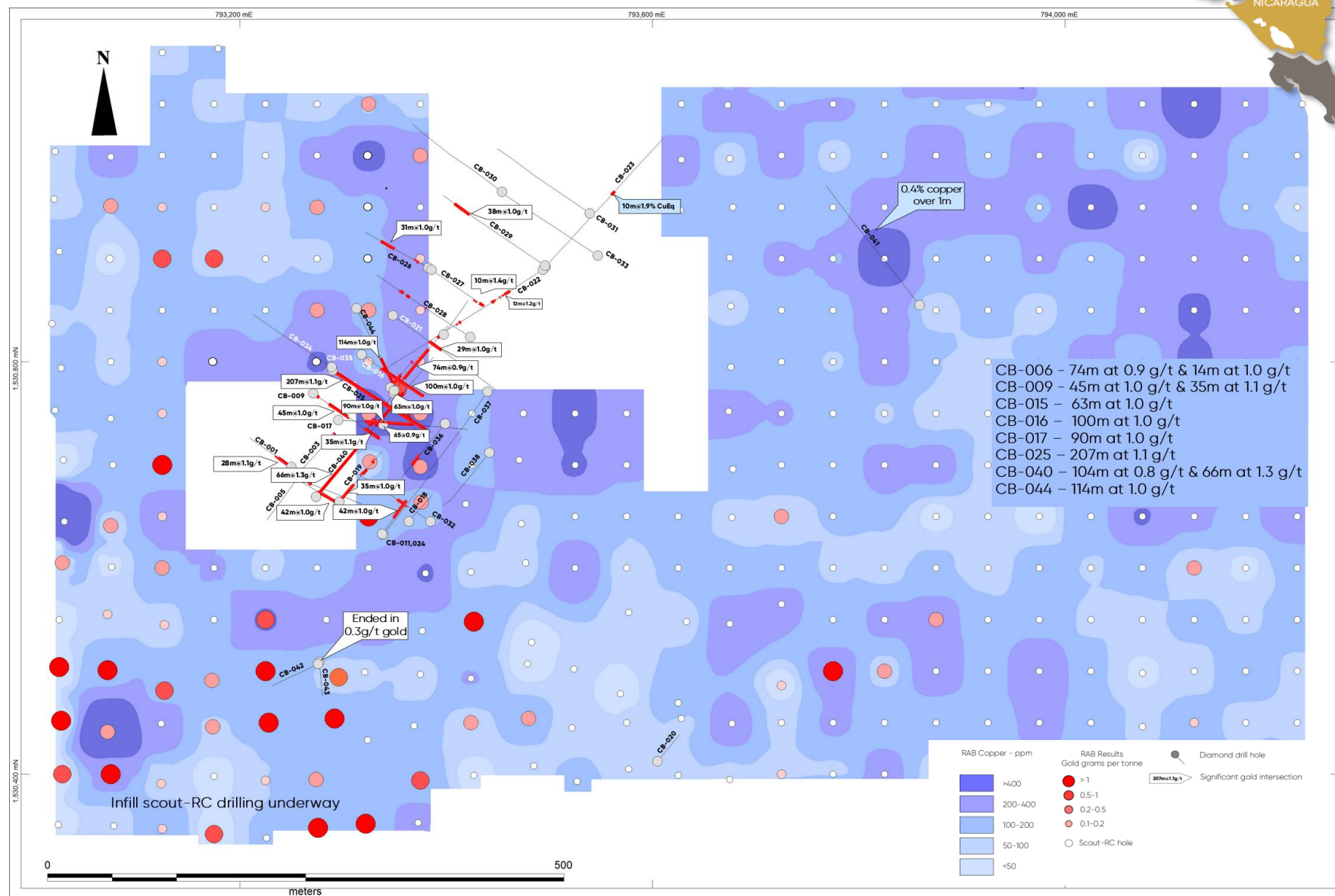


- Part of AGA acquisition 2019. Mineros S.A. funding 50%
- Over 10 square kilometers of hornfels and skarn-style mineralization
- Recent drilling identified intrusion-hosted sheeted and stockwork copper-gold-silver veins



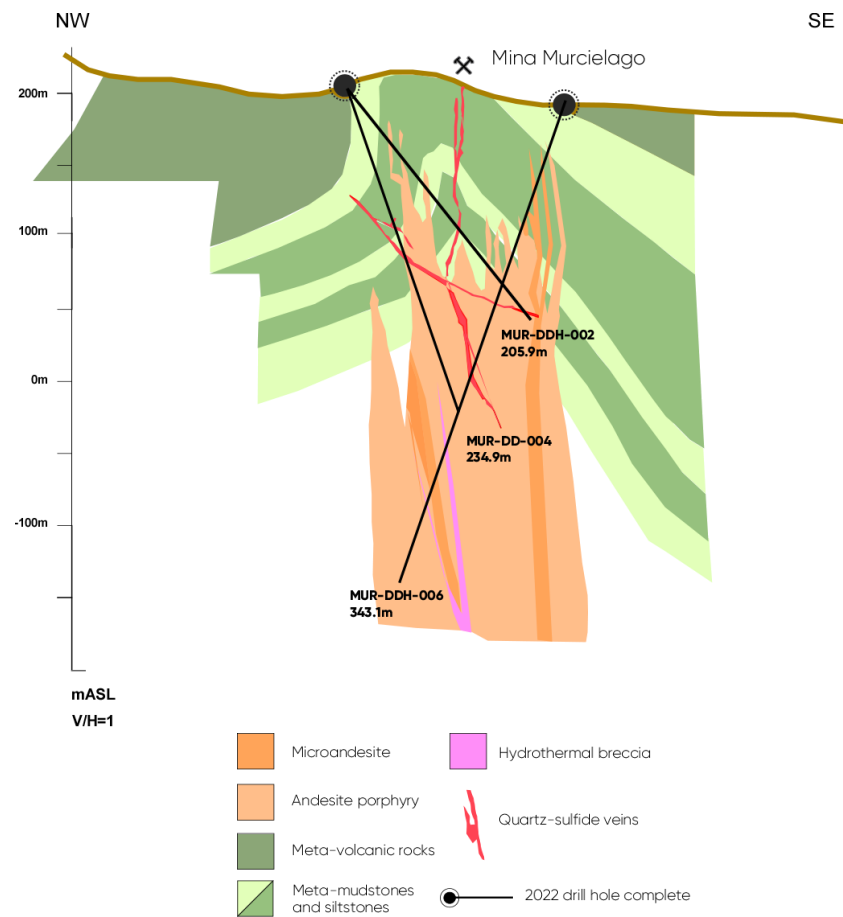
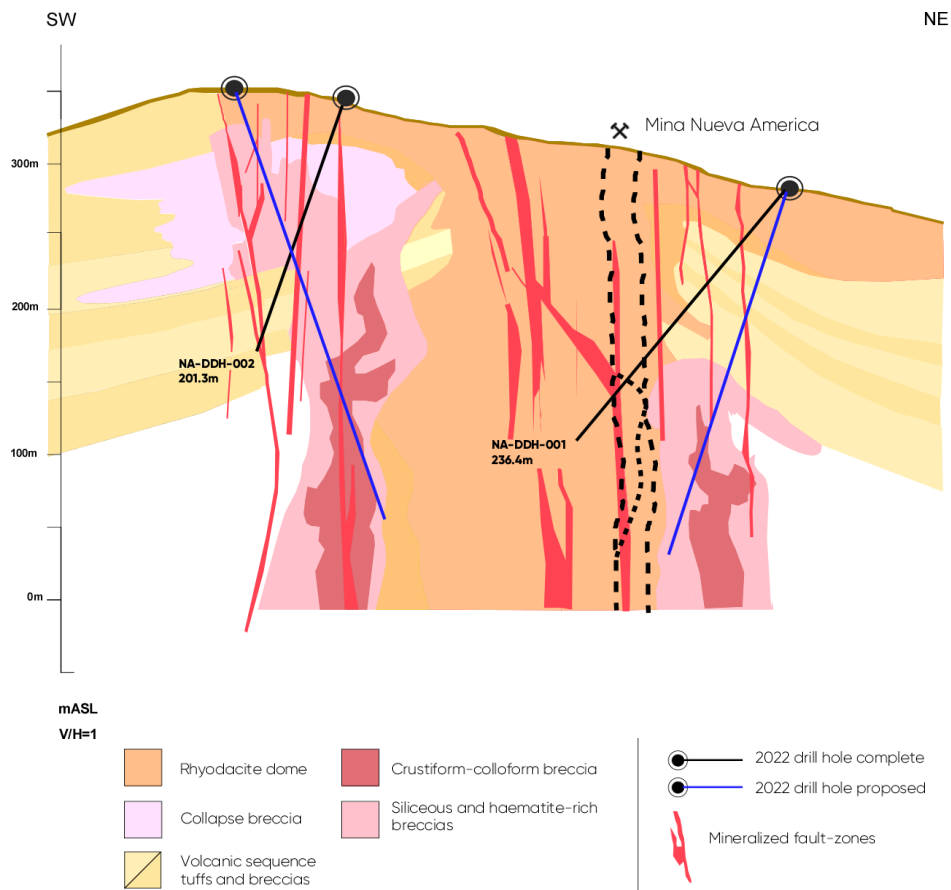


- ▲ New saprolite-concealed gold-copper discovery at exploratory-drilling stage
- ▲ Gold mineralized volcanic breccia and gold-copper molybdenum sulfide feeder zones. Potential for concealed copper-gold porphyry
- ▲ Diamond drilling and reverse circulation RAB-drilling currently underway



Nueva America & Murcielago

Drilling underway, results awaited





Oro Fino

Siuna, Nicaragua

Scout Drilling Q4 - 2022

Stratabound and discordant dome-related breccia bodies. High grade gold and silver channel samples – 2m at 188 g/t gold and 78 ppm silver, 1.3m at 100 g/t gold and 44 ppm silver

Scout-RC drilling planned Q2, 2022



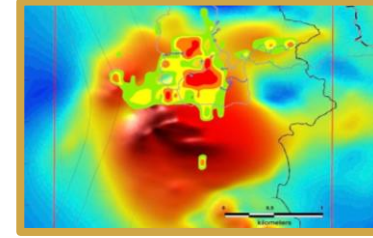
Bambanita

Rosita, Nicaragua

Scout Drilling Q4 - 2022

Gold copper skarn with immediately underlying porphyry-style mineralization. Gold grab results up to 68 g/t

Scout-Diamond drilling to test porphyry potential at depth planned Q4, 2022



Margaritas

Anzá, Colombia

Scout Drilling Q1 - 2023

Breccia bodies hosted in dioritic intrusion. Rock-chip results up to 35 g/t gold, soil geochemistry defines an approximately 2km by 1km anomaly

Deep magnetic high located beneath the diorite body is interpreted to represent a possible underlying source and drilling objective



SUPPORTER OF THE

TERRA CARTA

For Nature, People & Planet



Royal Road Accelerator projects

The Royal Road Accelerator aims to benefit rural communities in Nicaragua and Colombia through the commercialization of social enterprises engaged in the cultivation and fabrication of goods for international markets



CLORIS

Growth, extraction and downstream production of psychoactive and non-psychoactive cannabis products



QUASSIA

Natural biopesticides to eradicate mites and ticks from domestic animals and honeybees



AMARAL

Line of commercial non-alcoholic and alcoholic beverages using natural plants

Social Change Through Business

Camila Gutierrez
Managing Director, Royal Road Accelerator



The Royal Road Board



Tim Coughlin
PRESIDENT & CEO



Hugh Devlin
EXECUTIVE DIRECTOR SUSTAINABILITY



Jon Hill
NON-EXECUTIVE CHAIRMAN



Ana Juarez
NON-EXECUTIVE DIRECTOR



Roderick Corrie
NON-EXECUTIVE DIRECTOR



Guy Wallis
NON-EXECUTIVE DIRECTOR



Marcus Stone
NON-EXECUTIVE DIRECTOR

Share Structure

As of September 9th 2022

265M

Outstanding Shares

18.2M

Employee Options
(\$0.25, \$0.30, \$0.40)

CAD \$23M

Cash



AGNICO EAGLE



MACKENZIE
Investments



U.S. Global Investors

18%

7.9%

2.6%

Analyst Coverage

Sprott



Please contact us with any questions

N E W M I N E S F O R A N E W W O R L D

Address: Ground Floor, Portman House, 32 Hue Street, St Helier, Jersey, JE2 3RE

Email: Info@royalroadminerals.com

Website: www.royalroadminerals.com

Investor Relations: Aurelie-Anne Chivers

Telephone: +44 (0) 1534 887166