



AMERICAS
GOLD AND SILVER

A High-Growth, Low-Cost
PRECIOUS METALS

Company in North America



CORPORATE PRESENTATION

September 2022

FORWARD-LOOKING STATEMENTS

Safe Harbour and Other Disclosures



This presentation contains “forward-looking information” within the meaning of applicable securities laws. Forward-looking information includes, but is not limited to, Americas Gold and Silver’s expectations, intentions, plans, assumptions and beliefs with respect to, among other things, the expected prices of gold, silver and other metals; estimated production rates and results for gold, silver and other metals, as well as the related costs, expenses and capital expenditures; the continuing progress of the recapitalization plan at the Galena Complex, including the expected production levels and potential additional mineral resources thereat; the continuation of mining and processing operations at the Cosalá Operations following the resolution of the illegal blockade, including expected production levels and the continuity of legal access for employees and contractors; the expectations regarding the level of support from the Mexican government with respect to the long-term stability of Cosalá Operations, and its ability to maintain such support in the near- and long-term; the Company’s efforts to resolve metallurgical challenges at Relief Canyon, and its ability to finance, develop and operate Relief Canyon, including any expected improvement of operations and overall project economics in connection therewith, the timing and conclusions of the data compilation and analysis occurring at Relief Canyon and the length of time of the temporary suspension in mining operations at Relief Canyon. Guidance and outlook contained in this press release was prepared based on current mine plan assumptions with respect to production, costs and capital expenditures, the metal price assumptions disclosed herein, and assumes no adverse impacts to operations from the COVID 19 pandemic and no further adverse impacts to the Cosalá Operations from blockades and is subject to the risks and uncertainties outlined below. Often, but not always, forward-looking information can be identified by forward-looking words such as “anticipate”, “believe”, “expect”, “goal”, “plan”, “intend”, “potential”, “estimate”, “may”, “assume” and “will” or similar words suggesting future outcomes, or other expectations, beliefs, plans, objectives, assumptions, intentions, or statements about future events or performance. Forward-looking information is based on the opinions and estimates of Americas Gold and Silver as of the date such information is provided and is subject to known and unknown risks, uncertainties, and other factors that may cause the actual results, level of activity, performance, or achievements of Americas Gold and Silver to be materially different from those expressed or implied by such forward-looking information. With respect to the business of Americas Gold and Silver, these risks and uncertainties include risks relating to widespread epidemics or pandemic outbreak including the COVID-19 pandemic; the impact of COVID-19 on our workforce, suppliers and other essential resources and what effect those impacts, if they occur or reoccur, would have on our business, including our operations, cash flow and results of the Company relating to the unknown duration and impact of the COVID-19 pandemic; interpretations or reinterpretations of geologic information; unfavorable exploration results; inability to obtain permits required for future exploration, development or production; general economic conditions and conditions affecting the industries in which the Company operates; the uncertainty of regulatory requirements and approvals; fluctuating mineral and commodity prices; the ability to obtain necessary future financing on acceptable terms or at all; and risks associated with the mining industry such as economic factors (including future commodity prices, currency fluctuations and energy prices), ground conditions and other factors limiting mine access, failure of plant, equipment, processes and transportation services to operate as anticipated, environmental risks, government regulation, actual results of current exploration and production activities, possible variations in ore grade or recovery rates, permitting timelines, capital and construction expenditures, reclamation activities, labor relations or disruptions, social and political developments and other risks of the mining industry. The continuing impact of COVID-19 on the Company is dependent on a number of factors outside of its control and knowledge, including the effectiveness or resumption of the measures taken by public health and governmental authorities to combat the spread of the disease, global economic uncertainties and outlook due to the disease, and the evolving restrictions relating to mining activities and to travel in certain jurisdictions in which it operate. Although the Company has attempted to identify important factors that could cause actual results to differ materially from those contained in forward-looking information, there may be other factors that cause results not to be as anticipated, estimated, or intended. Readers are cautioned not to place undue reliance on such information. Additional information regarding the factors that may cause actual results to differ materially from this forward-looking information is available in Americas Gold and Silver’s filings with the Canadian Securities Administrators on SEDAR and with the SEC. Americas Gold and Silver does not undertake any obligation to update publicly or otherwise revise any forward-looking information whether as a result of new information, future events or other such factors which affect this information, except as required by law. Americas Gold and Silver does not give any assurance (1) that Americas Gold and Silver will achieve its expectations, or (2) concerning the result or timing thereof. All subsequent written and oral forward-looking information concerning Americas Gold and Silver are expressly qualified in their entirety by the cautionary statements above.

A HIGH-GROWTH, SILVER FOCUSED COMPANY SEVERAL OPERATIONS IN NORTH AMERICA

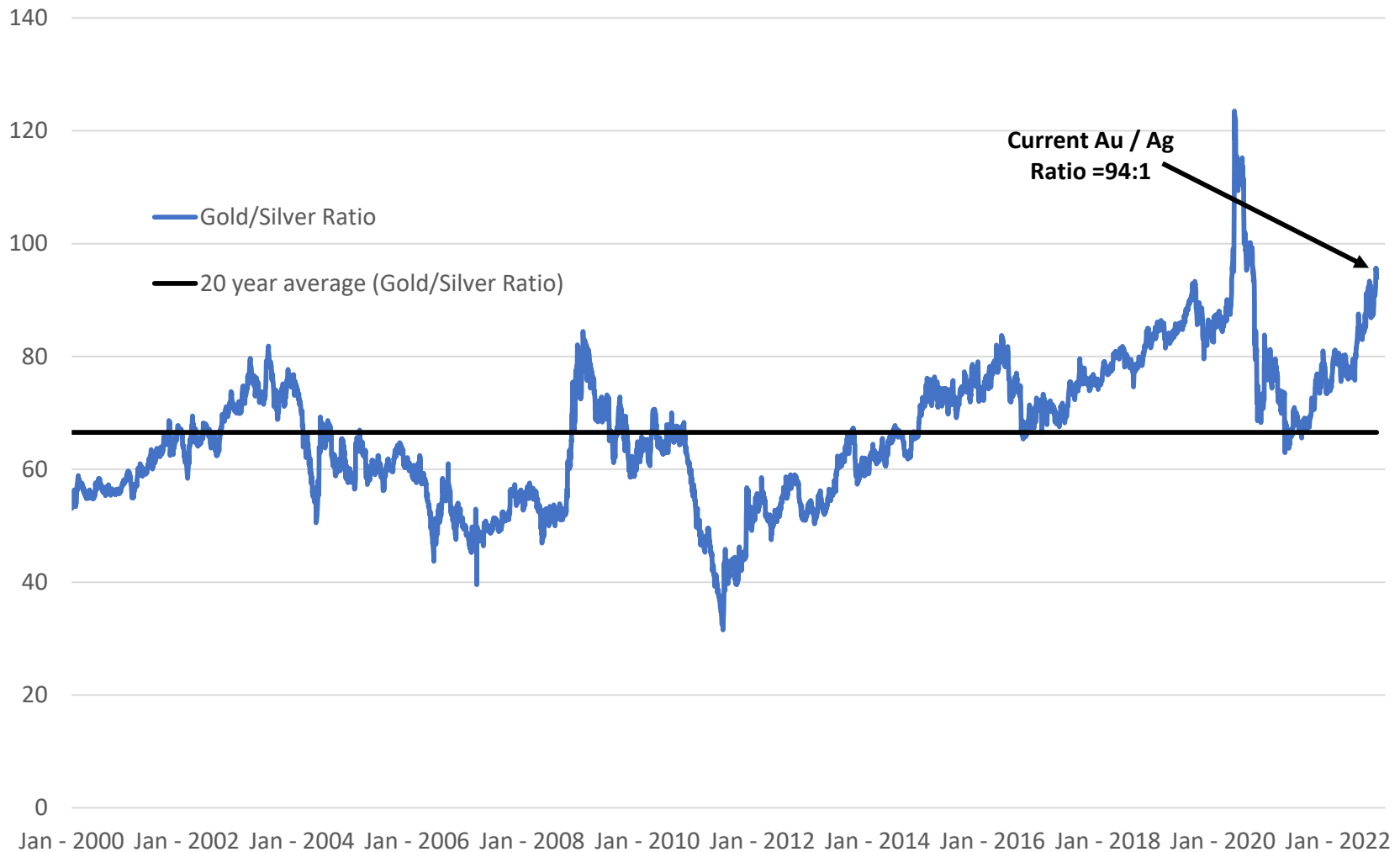
Significant Exposure to Precious Metals

- Multiple North American precious metal assets
- Projecting significant 3-year increase in silver and silver equivalent production
- Silver optionality through Cosalá and Galena
 - Cosalá mine providing significant free cash flow at current metal prices
 - Increase in silver production and continued resource growth at Galena Complex
- Relief Canyon temporarily suspended
 - Gold leaching continues
 - Metallurgical testwork underway to increase recovery
- Dual-listed on the NYSE American and TSX



OPTIONALITY TO SILVER

- Silver has underperformed gold



OPTIONALITY TO SILVER

- Significant production growth in both silver and silver equivalent expected over next couple of years

| | 2021 Actual ⁽¹⁾ | 2022 Guidance ⁽¹⁾ | 2023 Outlook ⁽¹⁾ | 2024 Outlook ⁽¹⁾ |
|---|-------------------------------|---|--------------------------------|--------------------------------|
| Silver Production (ounces) | 670,000 oz | 1.4 – 1.8 Moz | 2.4 – 2.8 Moz | 3.4 – 3.8 Moz |
| Zinc Production (million pounds) | 4.2 Mlbs | 36.0 – 40.0 Mlbs | 31.0 – 35.0 Mlbs | 33.0 – 37.0 Mlbs |
| Lead Production (million pounds) | 12.9 Mlbs | 22.0 – 26.0 Mlbs | 21.0 – 25.0 Mlbs | 22.0 – 26.0 Mlbs |
| Silver Equivalent Production (ounces) | 1.5 Moz | 4.8 – 5.2 Moz | 5.6 – 6.0 Moz | 7.0 – 7.4 Moz |
| Cash costs ⁽²⁾ (\$ per silver ounce) | | \$4.00 – 5.00/oz | | |
| Capital Expenditures (\$) – Sustaining – Growth Exploration Drilling (\$) | | \$12.0 – 14.0 M \$6.0 – 7.0 M \$2.5 – 3.0 M | | |

(1) Guidance for 2022 and outlook for 2023 and 2024 include only the Cosalá Operations and the Galena Complex (60%). Silver equivalent ounces for 2022 guidance and 2023 & 2024 outlook were calculated based on \$22.00/oz silver, \$0.95/lbs lead and \$1.30/lbs zinc. Silver equivalent ounces for 2021 was calculated based on silver, zinc and lead realized prices during the respective period. Please see the Forward-looking Information of this Presentation.

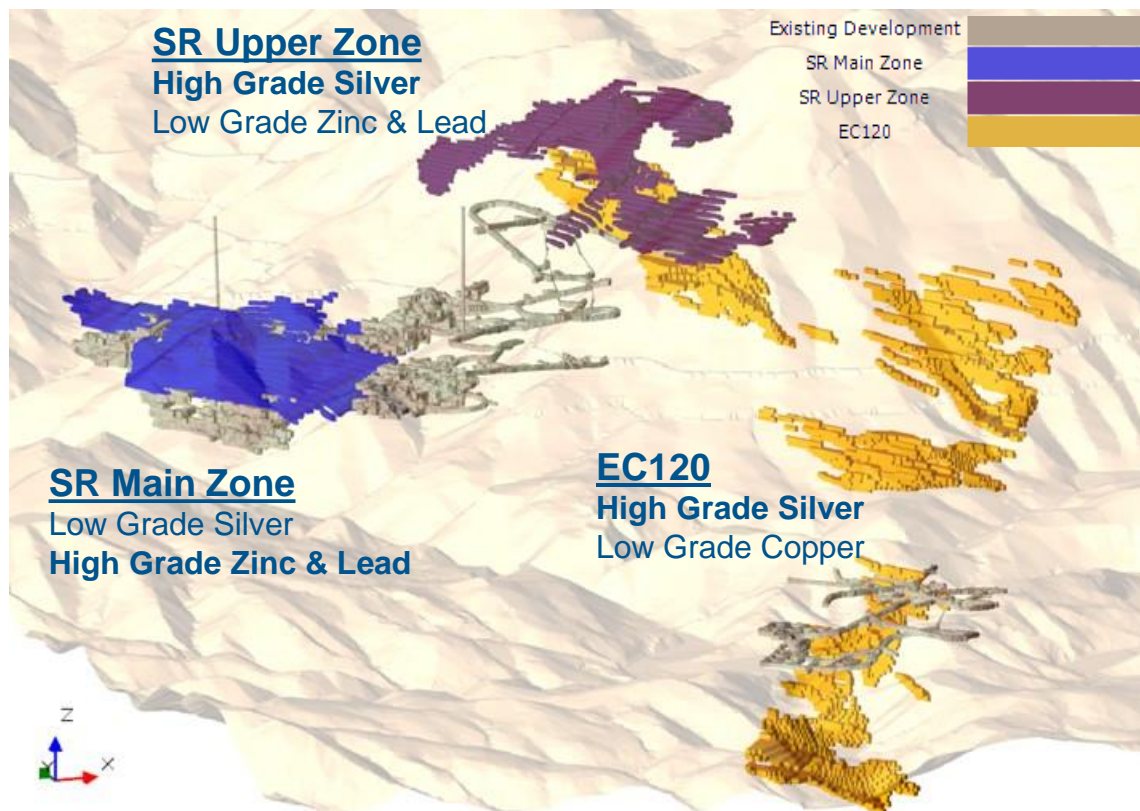
(2) This metric is a non-GAAP financial measure or ratio. The Company uses the financial measures “Cash Costs” and “Cash Costs/Ag Oz Produced” in accordance with measures widely reported in the silver mining industry as a benchmark for performance measurement and because it understands that, in addition to conventional measures prepared in accordance with IFRS, certain investors and analysts use this information to evaluate the Company’s underlying cash costs and total costs of operations. Cash costs are determined on a mine-by-mine basis and include mine site operating costs such as mining, processing, administration, production taxes and royalties which are not based on sales or taxable income calculations,

NEAR TERM CATALYSTS

- Attractive current valuation compared to silver producing peers; financing overhang
 - Americas Gold and Silver currently trading¹
 - \$0.46 per silver resource ounce
 - 0.22x NAV² based on consensus estimates
 - Senior Silver Producers average 0.94x NAV²
 - Emerging Producers average of 0.45x NAV²
- Multiple near term catalysts
 - Cosalá ramp up to 1,800 tpd (achieved)
 - Galena Phase II drilling results (ongoing)
 - Cosalá free cash flow generation (achieved Q1-2022)
 - Increased mineral reserves and M&I resources at Galena Complex: overall mineral resource continues to increase (achieved Q3-2022)
 - Cosalá Upper Zone contribution – increased silver production (H2- 2022)
 - Galena Hoist – increase annual production to over 2.0 Moz Ag (anticipated Q4-2022)
 - Relief Canyon market update (anticipated H2 - 2022)

COSALÁ OPERATIONS

- Cosalá Operation operating at full production rate of ~1,800 tpd
- At current silver and zinc prices, significant monthly free cash flow
- Potential to increase annual production to 2.5 - 3.0 million
 - SR Upper Zone in production
 - Marginal incremental capital for development of EC120
 - Q4-2022 drilling to extend SR mine life
- 2022 silver production guidance of 0.7 – 0.9 Moz
- Negative cash costs and AISC at current prices net of by-product credits

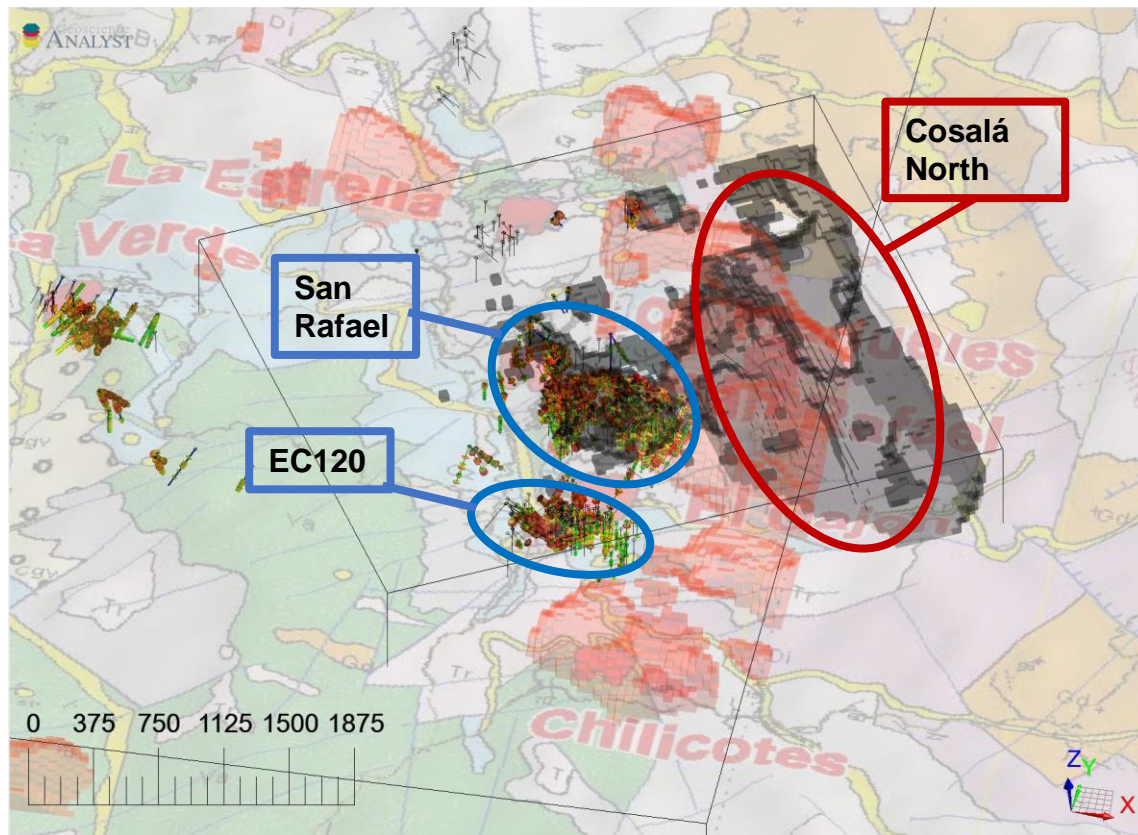


ABILITY TO ADJUST METAL PRODUCTION QUICKLY TO CHANGING COMMODITY MARKETS

LARGE LAND PACKAGE WITH EXPLORATION UPSIDE

COSALÁ OPERATIONS EXPLORATION

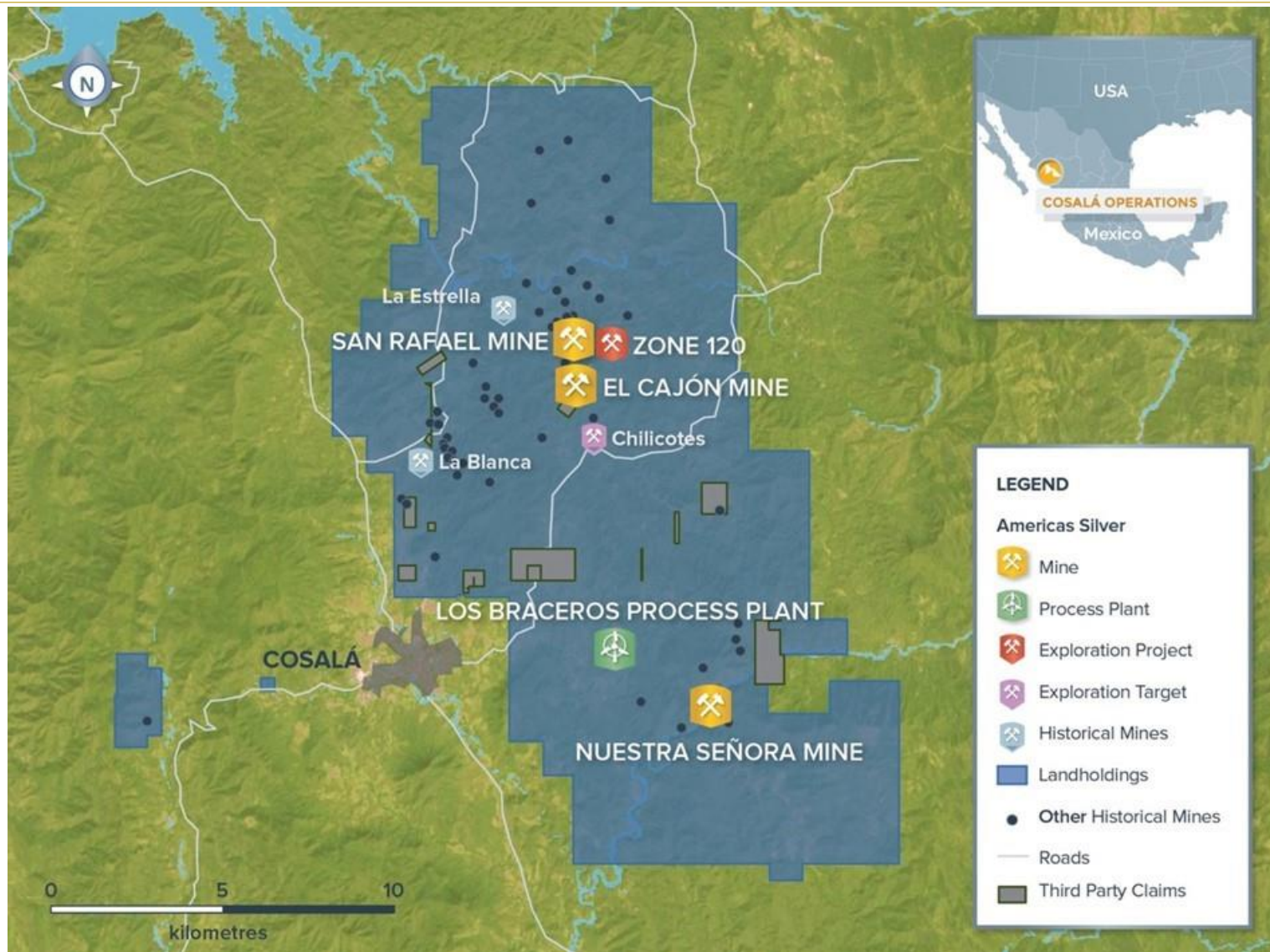
- Cosalá Operations property underexplored since acquisition of Scorpio Mining
- Recently reinterpreted historic geophysical information
- Identified several geomagnetic targets on property near San Rafael and EC120
- The initial study identified seven major IP/Mag anomaly trends on Cosalá North
- A 17-hole drill program is planned to test this area



**COSALA OPERATIONS PROPERTY UNDEREXPLORED WITH SIGNIFICANT TARGETS
IDENTIFIED BASED ON NEW STUDY – DRILL CAMPAIGN PLANNED**

COSALÁ OPERATIONS

District Land Holdings



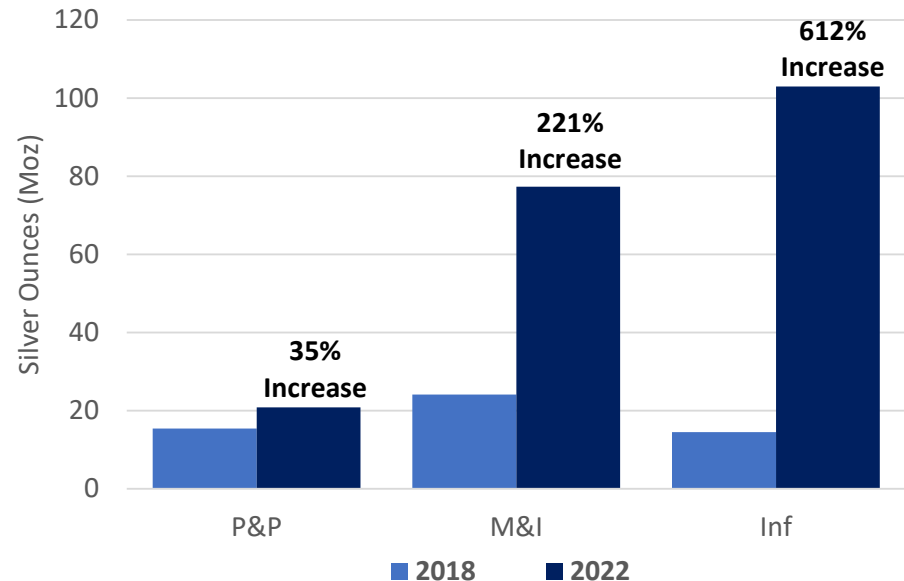
GALENA COMPLEX 60/40 JOINT VENTURE

Idaho, USA



- Significant increase to mineral resources¹ based on initial drilling (100% of asset) year over year
 - P&P – 20.9 Moz Ag (**up 35% since 2018**)
 - M&I – 77.3 Moz Ag (**up 221% since 2018**)
 - Inferred – 103.0 Moz Ag (**up 612% since 2018**)
- Increased production outlooks to over 2.0 million ounces of silver in 2023 (100% basis)
- Phase 1 drilling of the Recapitalization Plan complete; surpassed targeted mineral resource additions of least 50 million ounces of silver, on a 100% basis for the property
- Updated resource increased mineral reserves and M&I resource; in continuing to add ounces and increase the overall mineral resource

Resource Growth Since Start of Recapitalization Plan

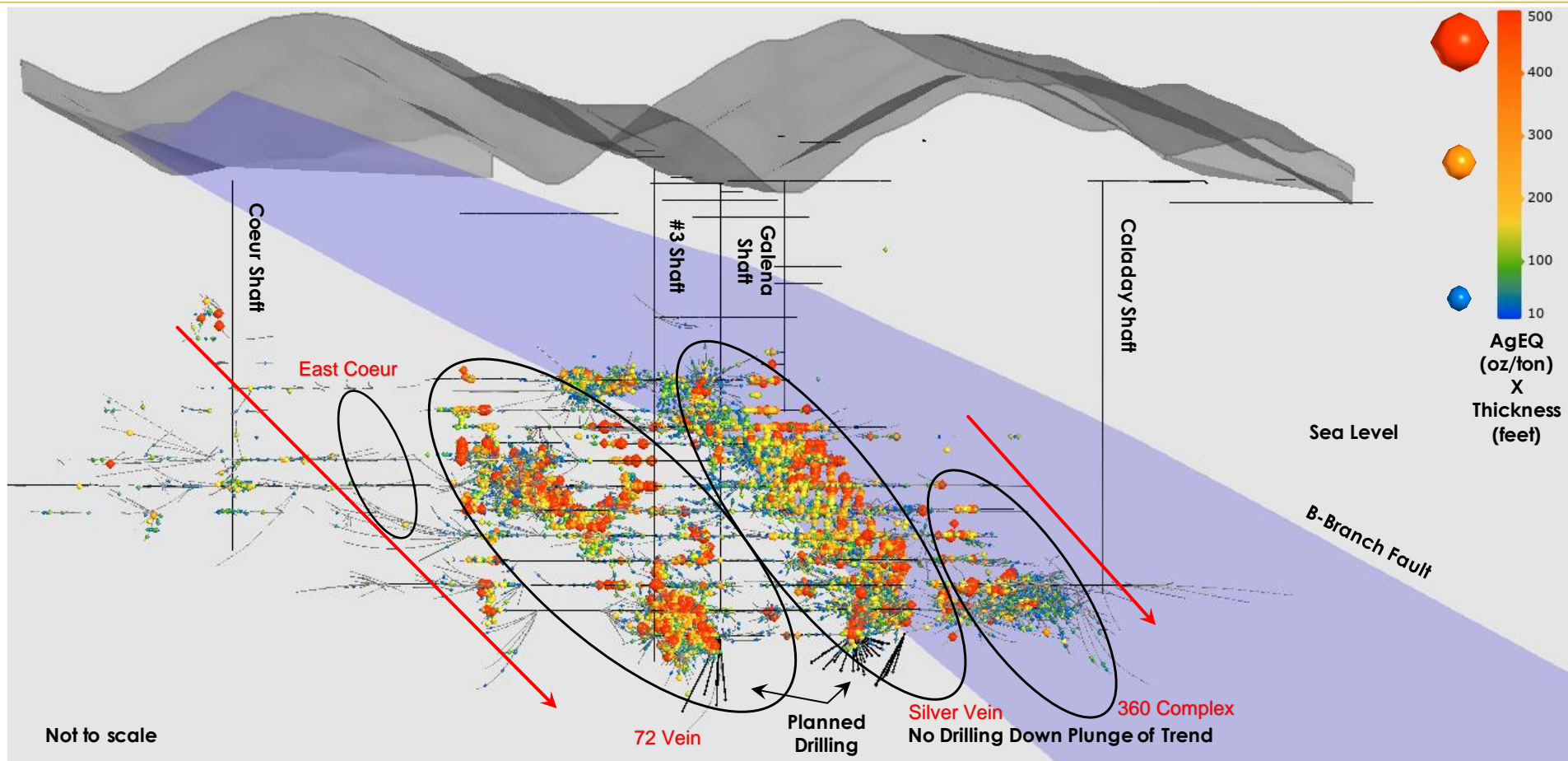


- The Phase 2 drill program has commenced with several targets identified and expected conversion of mineral resources to mineral reserves
- Have outlined 5-prospective brownfield target areas based on large gap areas containing no drill data
- Continued exploration success could propel operation to historical peak production



GALENA COMPLEX

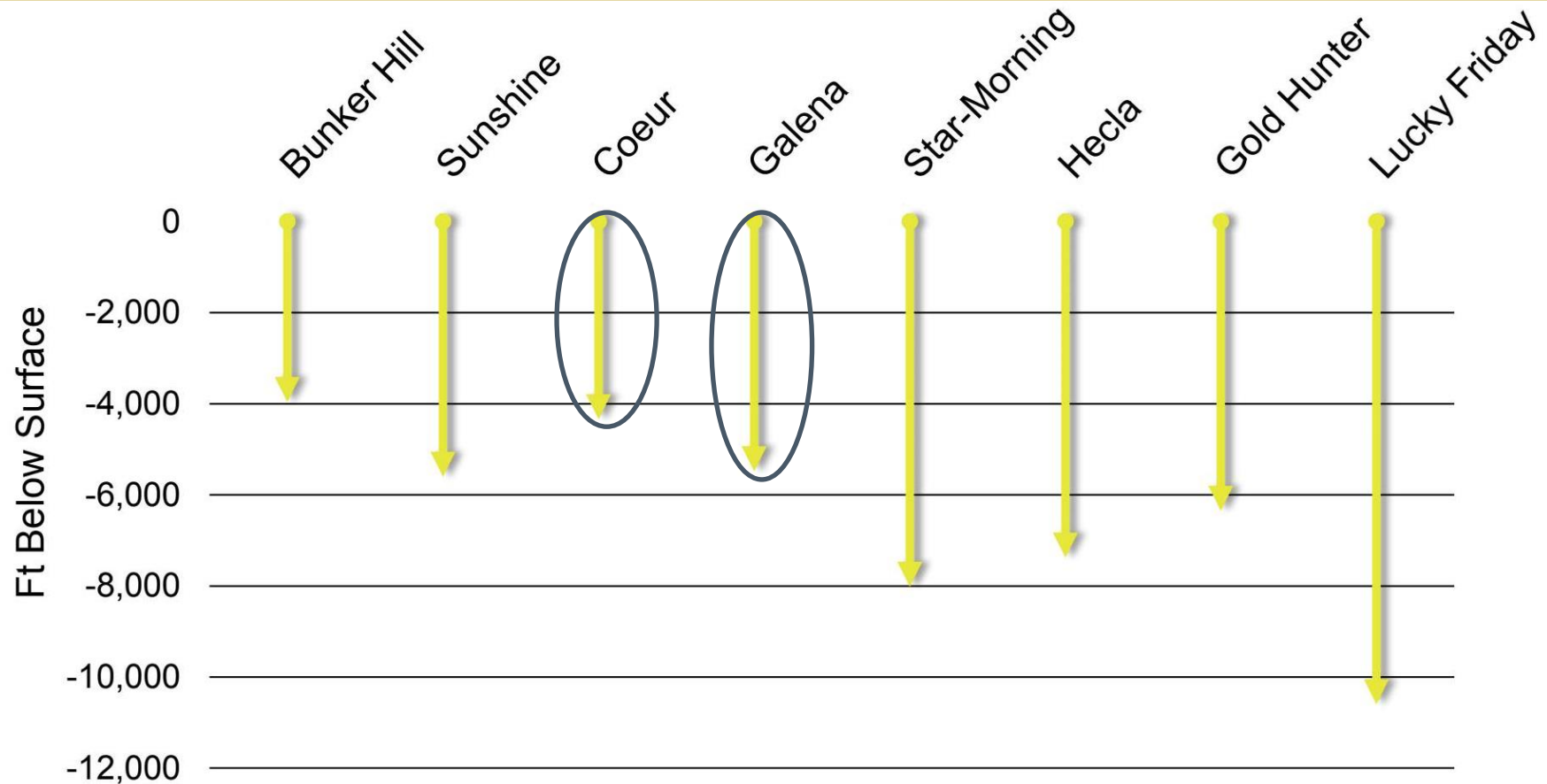
Idaho, USA



- Significant exploration potential at depth; planned drilling includes:
 - Early drilling success from 5500 Level drill stations targeting extension of prolific Silver Vein
 - 360 Complex and Caladaya – Planned drilling as 5500 Level advances further east
 - Silver Vein Extension and 185 Vein now extended over 800 feet below current workings

SILVER VALLEY POTENTIAL AT DEPTH

Idaho, USA



GALENA COMPLEX ONE OF THE SHALLOWEST OPERATIONS IN THE SILVER VALLEY

- Depth of development not impacted by faulting or other geologic structures; development and drilling stopped due to lack of capital amid silver price bear market

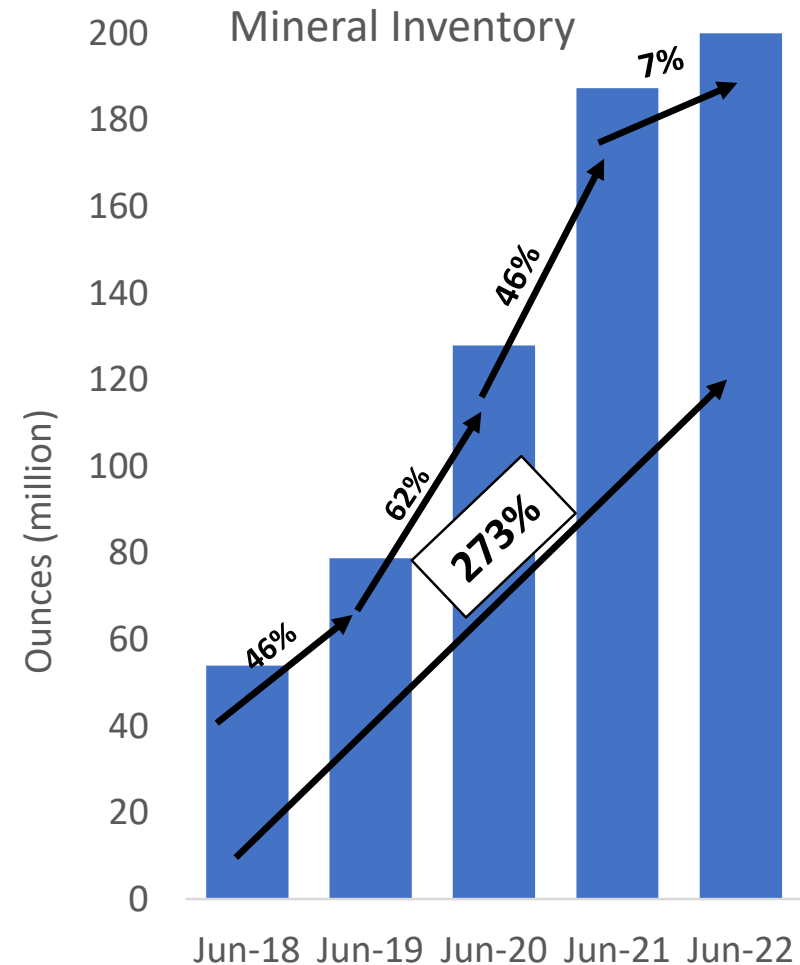
SUCCESS AT GALENA; MORE EXPECTED

Significant Resource Growth from the Recapitalization Plan:

- Updated resource estimate expected in Q3-2022 targeting increased mineral reserves and a global resource of over 200 Moz
- Silver at a discovery cost of <\$0.10 per ounce

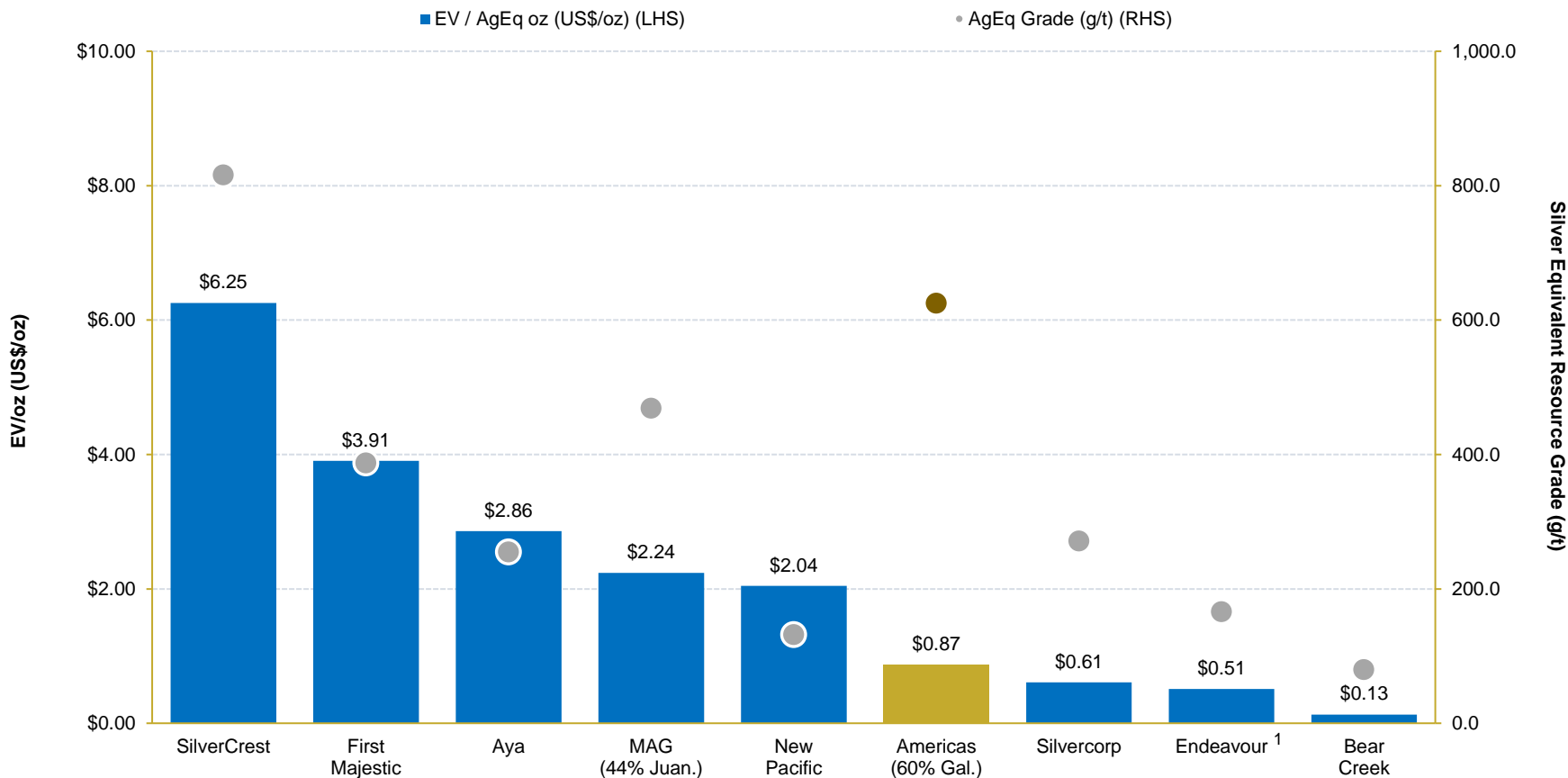
Recent Drill Results:

- Encouraging drilling from 5500 Level targeting the Silver Vein Extension
 - Hole 55-175A: **7,370 g/t Ag** and 6.3% Cu (8,020 g/t silver equivalent ^[1]) over 2.7 m^[2] including: **30,200 g/t silver** and 26.1% copper (32,900 g/t silver equivalent) over 0.3 m including: **23,000 g/t silver** and 17.0% copper (24,800 g/t silver equivalent) over 0.2 m including: **11,500 g/t silver** and 10.0% copper (12,500 g/t silver equivalent) over 0.2 m
- Near mine exploration – an additional area of growth
 - Hole 37-329: **7,501 g/t silver** and 2.6% copper (7,781 g/t silver equivalent) over 1.7 m including: **21,500 g/t silver** and 7.6% copper (22,300 g/t silver equivalent) over 0.6 m



GALENA VALUATION POTENTIAL

GALENA SIGNIFICANTLY UNDERVALUED COMPARED TO BOTH DEVELOPERS AND PRODUCERS



- Management believes USA is undervalued despite the fact that the mine has over \$100 million in infrastructure in place with continued exploration potential
- Average EV / AgEq oz (not including Americas Gold and Silver) = \$2.32 / AgEq oz

GALENA COMPLEX OPERATIONS

District Land Holdings



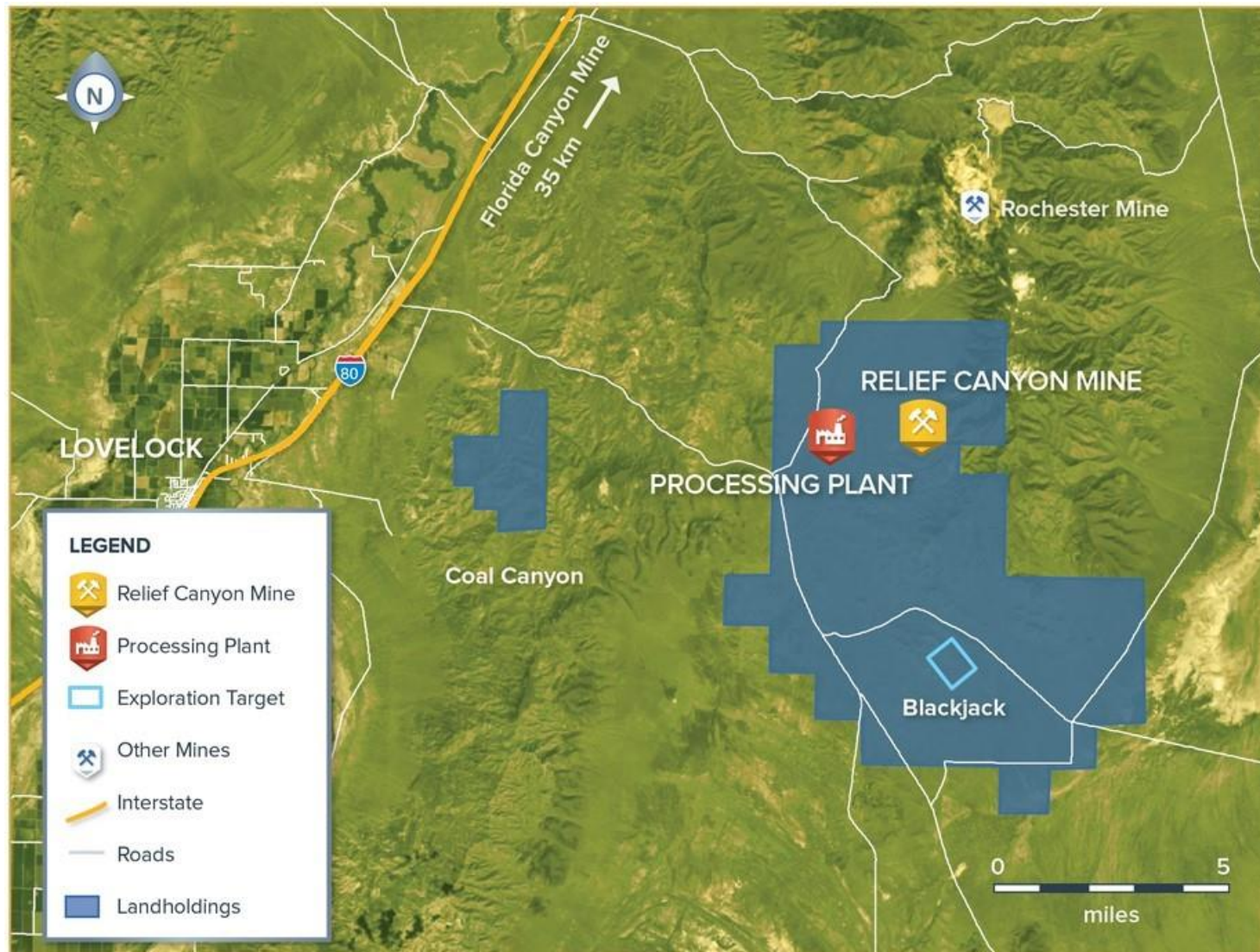
RELIEF CANYON UPDATE

Nevada, USA

- On August 13, 2021, the Company temporarily suspended mining operations at Relief Canyon in order to prioritize capital for the Cosalá Operations re-start
- Gold continues to be produced through re-leaching activities

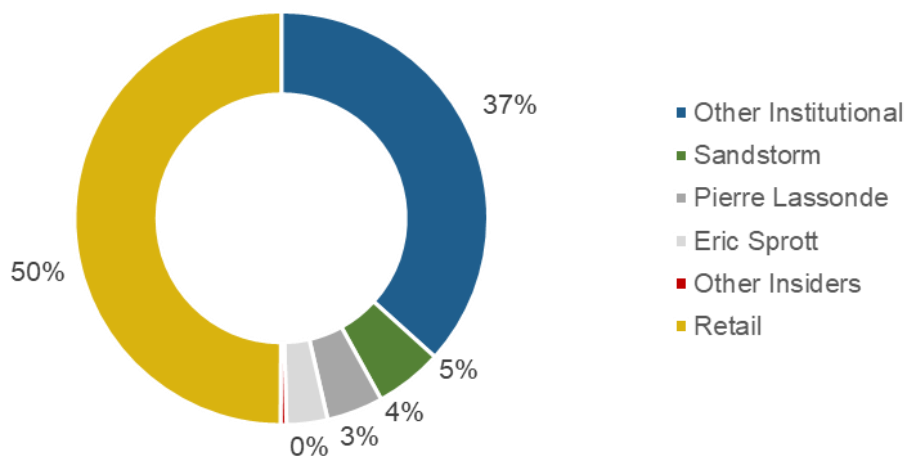


RELIEF CANYON LAND POSITION



CAPITAL STRUCTURE

Share Ownership



Top Shareholders

| | |
|--------------------------|----------------------------|
| Pierre Lassonde | Eric Sprott |
| Sandstorm Gold Royalties | Trinity Capital Partners |
| Van Eck | IXIOS Asset Management |
| Merk Investments | Lynwood Capital Management |

Capital Structure

| | |
|----------------------------------|-----------|
| Recent Price ¹ | USD\$0.50 |
| Market Capitalization | USD\$92M |
| Basic Common Shares ² | 184.3M |
| Options | 12.1M |
| Warrants | 2.6M |
| Full Diluted Shares | 199.0M |

Reserves and Resources³

| | P&P | M&I | Inferred |
|---------------|----------|----------|----------|
| Silver | 35M oz | 79M oz | 75M oz |
| Gold | - | 572k oz | 25k oz |
| Zinc | 107M lbs | 815M lbs | 246M lbs |
| Lead | 136M lbs | 796M lbs | 620M lbs |
| Copper | 33M lbs | 33M lbs | 31M lbs |

WHY INVEST?

Creating a High-Growth, Low-Cost, Silver Focused North American Company

 Re-Valuation **Potential**

 Large North American
Resource Base

 Low-Cost **Operations**

 Proven
Management Team

 Increasing
**Precious Metals
Exposure**

 Significant **Precious
Metals Growth**



Appendix

EXECUTIVE MANAGEMENT AND BOARD OF DIRECTORS



Management

• Darren Blasutti

President and Chief Executive Officer

Former Barrick Gold Executive, 20+ years M&A experience including Homestake Mining and Placer Dome acquisitions and Cortez consolidation, CPA

• Warren Varga

Chief Financial Officer

Former Barrick Gold Senior Management, Former US Silver & Gold CFO, 20+ years financial leadership, CPA, CFA

• Stefan Axell

Vice President, Corporate Development & Communications

Former Franco-Nevada Senior Management, +15 years finance and mining experience, former equity research analyst, CFA charterholder

• Daren Dell

Chief Operating Officer

Former Barrick Gold Senior Management, 20+ years operations, project and mine evaluation experience, metallurgist, professional engineer

• Peter McRae

CLO and Senior Vice President, Corporate Affairs

15+ years corporate and commercial legal experience, former attorney for NY firm Weil, Gotshal & Manges LLP, NY/Ontario bar member

Board of Directors

• Alex Davidson

Chairman of the Board

Former Barrick Gold Executive, 25+ years metal exploration & acquisitions experience

• Bradley R. Kipp

Director

Operations, corporate finance & public company reporting, 20+ yrs experience

• Manuel Rivera

Director

President & CEO, Grupo Expansion, media, digital and consumer goods (Mexico), 20+ years experience

• Christine Carson

Director

Founder & CEO, Carson Proxy Advisors Ltd., 20+ years experience

• Alan Edwards

Director

President and Director of AE Resources, mine engineer

• Gordon Pridham

Director

Principal, Edgewater Capital, investment & corporate banking, capital markets 25+ years experience

• Lorie Waisberg

Director

Former Executive Vice President, Co-Steel Inc., lawyer & independent director

• Darren Blasutti

Director

ANALYSTS

| FIRM | ANALYST | CONTACT |
|---------------------------|----------------|--------------|
| Alliance Global Partners | Jake Sekelsky | 646-983-4000 |
| Clarus Securities Inc. | Varun Arora | 416-365-8093 |
| Cormark Securities | Richard Gray | 416-943-6407 |
| Desjardin Securities Inc. | Jonathan Egilo | 647-207-3961 |
| H.C. Wainwright & Co. | Heiko Ihle | 212-356-0510 |
| Laurentian Bank | Barry Allan | 416-865-5798 |
| ROTH Capital Partners | Joe Reagor | 949-720-7106 |
| Stifel GMP | Stephen Soock | 416-941-0186 |



MINERAL RESERVES AND RESOURCES

Proven and Probable Mineral Reserves

| Silver Mineral Reserves | | | | | | | | | |
|-------------------------|----------------|----------------|-----------------|----------------|----------------|-----------------|---------------------|----------------|-----------------|
| | Proven | | | Probable | | | Proven and Probable | | |
| | Tonnes (kt) | Grade (g/t) | Ounces (koz) | Tonnes (kt) | Grade (g/t) | Ounces (koz) | Tonnes (kt) | Grade (g/t) | Ounces (koz) |
| Total Silver | 954 | 214 | 6,550 | 4,532 | 193 | 28,162 | 5,486 | 197 | 34,712 |

| Zinc, Lead and Copper Mineral Reserves | | | | | | | | | |
|--|----------------|--------------|------------------|----------------|--------------|------------------|---------------------|--------------|------------------|
| | Proven | | | Probable | | | Proven and Probable | | |
| | Tonnes (kt) | Grade (%) | Pounds (Mlbs) | Tonnes (kt) | Grade (%) | Pounds (Mlbs) | Tonnes (kt) | Grade (%) | Pounds (Mlbs) |
| Total Zinc | 708 | 2.76 | 43.1 | 957 | 3.03 | 64.0 | 1,665 | 2.92 | 107.0 |
| Total Lead | 871 | 2.29 | 44.0 | 1,422 | 2.93 | 91.8 | 2,293 | 2.69 | 135.7 |
| Total Copper | 83 | 0.61 | 1.1 | 3,109 | 0.46 | 31.5 | 3,192 | 0.46 | 32.6 |

Measured & Indicated Mineral Resources

| Silver and Gold Mineral Resources – Exclusive of Mineral Reserves | | | | | | | | | |
|---|----------------|----------------|-----------------|----------------|----------------|-----------------|------------------------|----------------|-----------------|
| | Measured | | | Indicated | | | Measured and Indicated | | |
| | Tonnes (kt) | Grade (g/t) | Ounces (koz) | Tonnes (kt) | Grade (g/t) | Ounces (koz) | Tonnes (kt) | Grade (g/t) | Ounces (koz) |
| Total Silver | 14,632 | 34 | 15,984 | 23,837 | 82 | 62,849 | 38,469 | 64 | 78,834 |
| Total Gold | 12,177 | 0.90 | 352 | 10,431 | 0.66 | 220 | 22,608 | 0.79 | 572 |

| Zinc, Lead and Copper Mineral Resources – Exclusive of Mineral Reserves | | | | | | | | | |
|---|----------------|--------------|------------------|----------------|--------------|------------------|------------------------|--------------|------------------|
| | Measured | | | Indicated | | | Measured and Indicated | | |
| | Tonnes (kt) | Grade (%) | Pounds (Mlbs) | Tonnes (kt) | Grade (%) | Pounds (Mlbs) | Tonnes (kt) | Grade (%) | Pounds (Mlbs) |
| Total Zinc | 1,764 | 2.14 | 83.3 | 8,834 | 3.76 | 731.8 | 10,598 | 3.49 | 815.0 |
| Total Lead | 2,205 | 2.33 | 113.0 | 10,876 | 2.85 | 683.0 | 13,081 | 2.76 | 796.0 |
| Total Copper | 507 | 0.37 | 4.1 | 4,409 | 0.29 | 28.6 | 4,916 | 0.30 | 32.7 |

Inferred Mineral Resources

| Silver and Gold Mineral Resources | | | |
|-----------------------------------|----------------|----------------|-----------------|
| | Inferred | | |
| | Tonnes (kt) | Grade (g/t) | Ounces (koz) |
| Total Silver | 11,808 | 198 | 75,097 |
| Total Gold | 2,732 | 0.29 | 25 |

| Zinc, Lead and Copper Mineral Resources | | | |
|---|----------------|--------------|------------------|
| | Inferred | | |
| | Tonnes (kt) | Grade (%) | Pounds (Mlbs) |
| Total Zinc | 4,447 | 2.51 | 246.0 |
| Total Lead | 7,276 | 3.86 | 619.9 |
| Total Copper | 3,809 | 0.37 | 30.9 |

NOTES FOR MINERAL RESERVES AND RESOURCES ESTIMATES



Mineral Reserve estimates were prepared by Company personnel under the supervision of Daren Dell, P.Eng., the Company's Chief Operating Officer. Mineral Resource estimates and technical or scientific information in this news release were prepared internally by, or under the supervision of, Niel de Bruin, P.Geo., the Company's Director of Geology. Messrs. Dell and De Bruin are each considered a "qualified person" for the purpose of National Instrument 43-101 - Standards of Disclosure for Mineral Projects ("NI 43-101"). These estimates reflect the Company's 60% interest in the Galena Complex. See "Notes for Mineral Reserve and Mineral Resource Estimates" below regarding matters relating to review and verification of sampling, analytical and test data underlying the information contained in the written disclosure.

CIM (2014) Definition and Standards were followed for Mineral Reserve and Mineral Resource Estimates. Mineral Reserves are estimated at a net smelter return ("NSR") cut-off value of US\$60/tonne (US\$50/tonne in 2021) at San Rafael, US\$45/tonne (unchanged) at El Cajón, US\$45/tonne (unchanged) at Zone 120 and US\$225/tonne (US\$198/tonne in 2021) at Galena. The NSR cut-off is calculated using recent operating results for recoveries, off-site concentrate costs, and on-site operating costs. Mineral Reserves are estimated using metal prices of US\$20.00 (US\$18.00 in 2021) per ounce of silver, US\$2.75 (US\$2.75 in 2021) per pound of copper, US\$0.90 (US\$0.90 in 2021) per pound of lead and US\$1.15 (US\$1.10 in 2021) per pound of zinc. Numbers may not add or multiply accurately due to rounding.

Mineral Resources are estimated at a NSR cut-off value of US\$34/tonne (unchanged) at San Rafael, US\$45/tonne (unchanged) at El Cajón, US\$45/tonne (unchanged) at Zone 120 and US\$198/tonne (unchanged) at Galena. Mineral Resources are estimated at a 90 g/tonne silver equivalent cut-off grade at Nuestra Señora. Mineral Resources are estimated at a 2.3% zinc equivalent cut-off grade at San Felipe. Mineral Resources are estimated at a 0.17g/tonne gold cut-off grade at Relief Canyon and are constrained by a \$1,500 gold pseudoflow pit shell. Inferred Mineral Resources at Relief Canyon include existing low-grade stockpiles. Mineral Resources are estimated using metal prices of US\$1,500 (US\$1,500 in 2021) per ounce of gold, US\$22.00 (US\$22.00 in 2021) per ounce of silver, \$3.50 (US\$3.50 in 2021) per pound of copper, US\$1.10 (US\$1.05 in 2021) per pound of lead and US\$1.30 (US\$1.25 in 2020) per pound of zinc. Mineral Resources are reported exclusive of Mineral Reserves and as such the Mineral Resources do not have demonstrated economic viability. Numbers may not add or multiply accurately due to rounding.

Inferred Mineral Resources are considered too speculative geologically to have the economic considerations applied to them that would enable them to be categorized as mineral reserves, and there is therefore no certainty that the conclusions of the initial exploration drilling results will be realized. Additionally, where the Company discusses exploration/expansion potential, any potential quantity and grade is conceptual in nature and there has been insufficient exploration to define a Mineral Resource and it is uncertain if further exploration will result in the target being delineated as a Mineral Resource.

Varying cut-off grades have been used depending on the mine, methods of extraction and type of ore contained in the reserves. Mineral resource metal grades and material densities have been estimated using industry-standard methods appropriate for each mineral project with support of various commercially available mining software packages. The Company's normal data verification procedures have been employed in connection with the calculations. Verification procedures include industry standard quality control practices. Sampling, analytical and test data underlying the stated mineral resources and reserves have been verified by employees of the Company under the supervision of Qualified Persons, for purposes of 43-101 and/or independent Qualified Persons. The Company is not aware of any environmental, permitting, legal, title, taxation, socio-economic, marketing, political, or other relevant issues that would materially affect the Mineral Reserve and Mineral Resource Estimates. Additional details regarding Mineral Reserve and Mineral Resource estimation, classification, reporting parameters, key assumptions and associated risks for each of the Company's mineral properties are provided in the respective NI 43-101 Technical Reports which are available at www.sedar.com and the Company's website at www.americas-gold.com.



AMERICAS
GOLD AND SILVER

416-848-9503

www.americas-gold.com

Stefan Axell

VP, Corporate Development & Communication

saxell@americas-gold.com