



**HARFANG**  
— **EXPLORATION INC.** —

Corporate Presentation | June 2022

**TSXV:HAR**



**HARFANG**  
EXPLORATION INC.

## **FORWARD-LOOKING STATEMENTS**

### **FORWARD-LOOKING STATEMENT**

This presentation contains forward-looking information within the meaning of applicable securities legislation, which reflects the Corporation's current expectations regarding future events. Such statements can be recognized by the terms "forecast", "anticipate", "consider", "foresee" and other terms and similar expressions. In this presentation there is forward-looking information based on a number of assumptions and subject to a number of risks and uncertainties, many of which are beyond the Corporation's control that could cause actual results and events to differ materially from those that are disclosed in or implied by such forward-looking information. Such risks and uncertainties include, but are not limited to, the factors discussed under "Risk Factors" in Section 16 of the Company's Management Discussion and Analysis filed on SEDAR at [www.sedar.com](http://www.sedar.com). Any forward-looking information included in this presentation is based only on information currently available to the Corporation and speaks only as of the date on which it is made. Except as required by applicable securities laws, the Corporation assumes no obligation to update or revise any forward-looking information to reflect new circumstances or events.

### **TECHNICAL CONTENT**

Technical content within this presentation concerning the Serpent-Radisson Project is derived from the technical report prepared for Harfang Exploration Inc. and LaSalle Exploration Corp. dated January 31, 2022 by GeoVector Management Inc. and from work completed by Harfang and LaSalle since the effective date of the technical report.

Technical content within this presentation concerning the Blakelock Project is derived from the technical report prepared for LaSalle Exploration Corp. dated September 30, 2019 by Geologica Groupe-Conseil Inc. and from work completed by LaSalle since the effective date of the technical report.

The technical reports are available at [www.sedar.com](http://www.sedar.com) under the profile of LaSalle Exploration Corp.

The technical information in this presentation has been prepared and approved by François Huot, P.Geo, Vice President, Exploration at Harfang, and Ian Campbell, P.Geo, President and CEO at Harfang, both a non-independent "qualified person" as defined by National Instrument 43-101 (NI 43-101) Standards of Disclosure for Mineral Exploration Projects.



# HARFANG: A Discovery Driven Exploration Company

1

## Experienced Management and Board

Team of industry professionals with a track record of success in exploration and business development

2

## Portfolio of Highly Prospective Projects

Value anchored in diverse portfolio of 100%-owned quality projects consisting of gold, copper, nickel and PGE exploration assets

3

## Tier 1 Jurisdiction

Centered in the Eeyou Istchee James Bay and Abitibi districts of Québec and Ontario

4

## Technically Driven Business Approach

Systematic science driven, boots on the ground approach targeting prospective metallogenic terranes

5

## Strong Financial Position

Solid cash position and strong, supportive institutional shareholder base

6

## Commitment to Best Practices

Care and governance with our engagement, social licence and the environment

## MANAGEMENT TEAM



### **Ian Campbell**

President and Chief Executive Officer



### **François Huot**

Vice President, Exploration



### **Yvon Robert**

Chief Financial Officer



### **Marc Pothier**

Corporate Secretary and Legal Advisor

## BOARD OF DIRECTORS



### **Jean-Pierre Janson**

Director, Chair

- Chairman of Midland Exploration
- Former Managing Director at Richardson GMP Limited



### **André Gaumond**

Director

- Former Director of Osisko Gold Royalties
- Former President of Virginia Mines



### **Daniel G Innes**

Director

- Geologist and Former CEO of Lake Shore Gold Corp.
- 35+ years experience in the mineral exploration industry



### **Vincent Dubé-Bourgeois**

Director, Chair of Audit Committee

- Founder, Director and CEO of Goldspot Discoveries Corp.



### **Ian Campbell**

Director

- Former President and CEO of Temex Resources
- 35+ years experience in the mineral exploration industry



### **Karen Rees**

Director

- Former VP Exploration/Secretary at Temex Resources Corp.
- 30+ years experience in the mineral exploration industry



### **Sylvie Prud'homme**

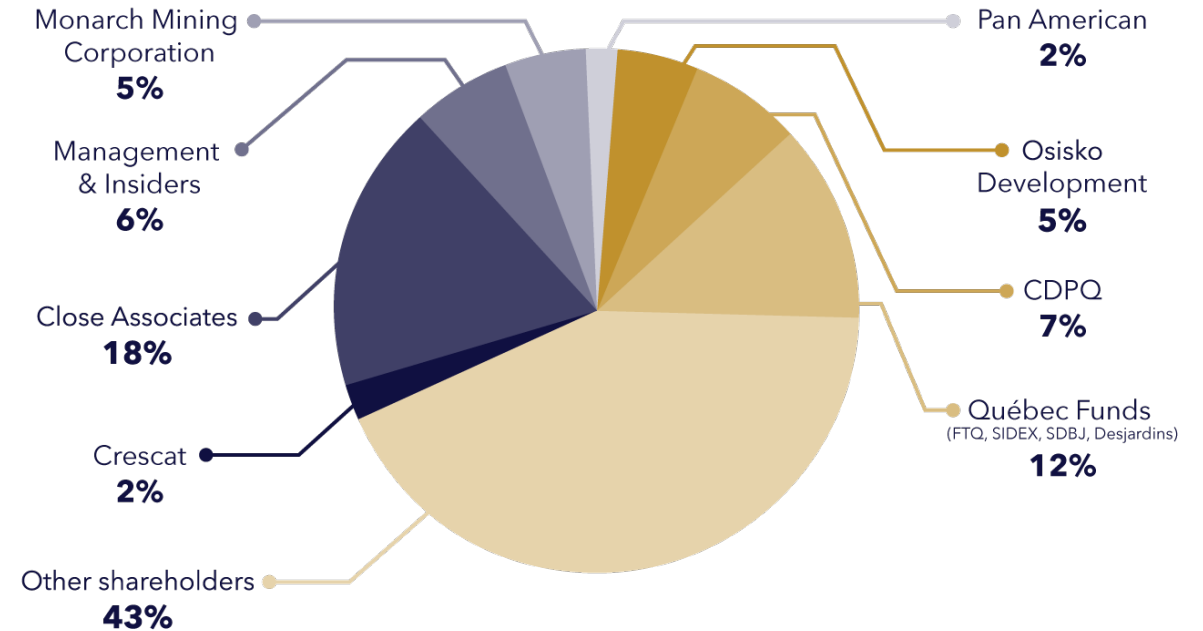
Director

- Geologist and former Manager, Investor Relations for Osisko Mining Corporation
- 35+ years experience in the mineral exploration industry

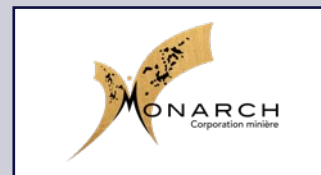
# Share Capital and Financial Partners

## CAPITALIZATION

Shares outstanding	<b>57.73 million</b>
Warrants	<b>6.78 million</b>
Options	<b>2.01 million</b>
Fully diluted shares outstanding	<b>66.52 million</b>
Treasury (as of April 30, 2022)	<b>\$10.0 million</b>
Financing (April 2022)	<b>\$4.25 million</b>



## FINANCIAL PARTNERS



**STRONG SUPPORT FROM LONG-TERM VALUE FOCUSED SHAREHOLDERS**



# Prospective Portfolio in Québec and Ontario

## Serpent-Radisson (Au)

- District scale gold discovery
- Over 50 gold showings discovered
- Multiple gold bearing structures

## Egan (Au)

- High-grade gold discovery
- Central to Timmins-Kirkland Lake-Matachewan mining camps

## Lake Aulneau (Cu, Ni, PGE)

- 7 Cu-Ni-PGE prospects in the Labrador Trough

## Pontax (Li-Au)

Grassroots

## Douay North (Au)

Grassroots

## Blakelock (Au)

- Strategically located along the Casa Berardi trend

## Lake Ménarik (Au)

- Monzonite hosted, high-grade gold
- Grab samples to 1,918 g/t Au
- Shallow drilling

## Ménarik East (Cr, Ni, PGE, Au)

- Non-compliant Cr-PGE resource
- Multiple Ni, PGE and Au showings

## Lake Tapiatic (Au)

Grassroots

## Bonfait (Au)

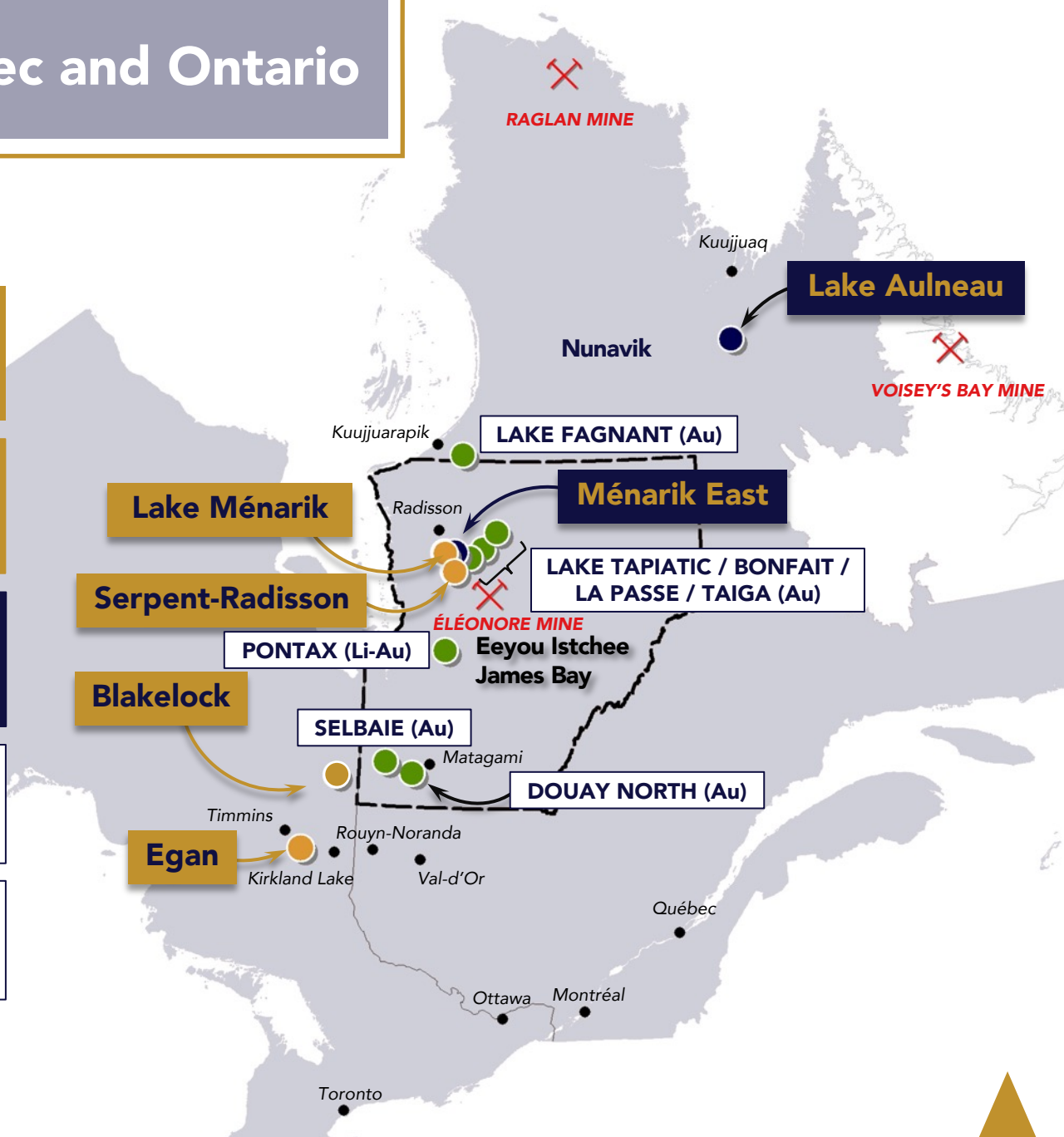
Grassroots

## Lake Fagnant (Au)

Grassroots

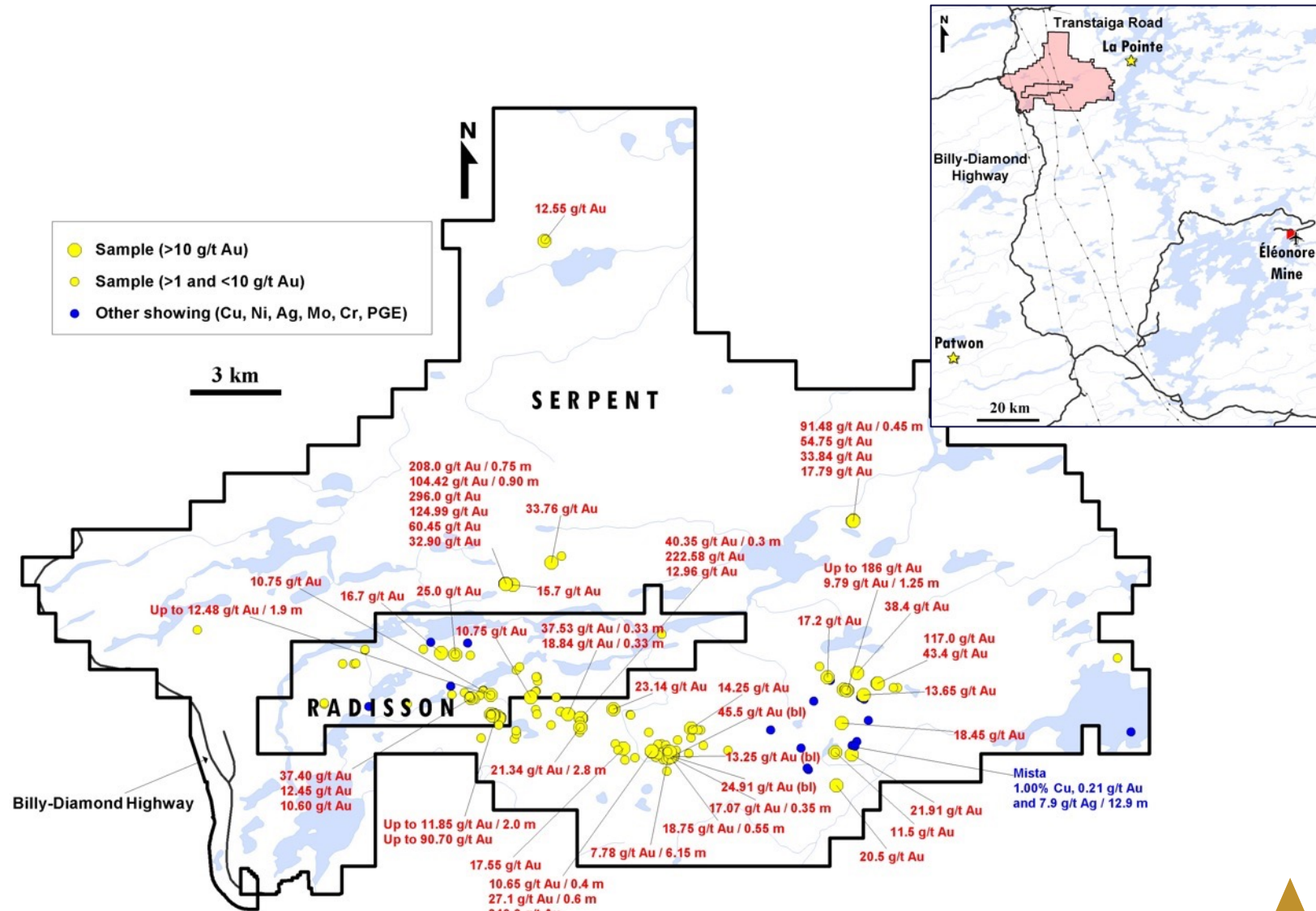
## Selbaie (Au)

Grassroots



# Serpent-Radisson: Developing a District-Scale Gold Play

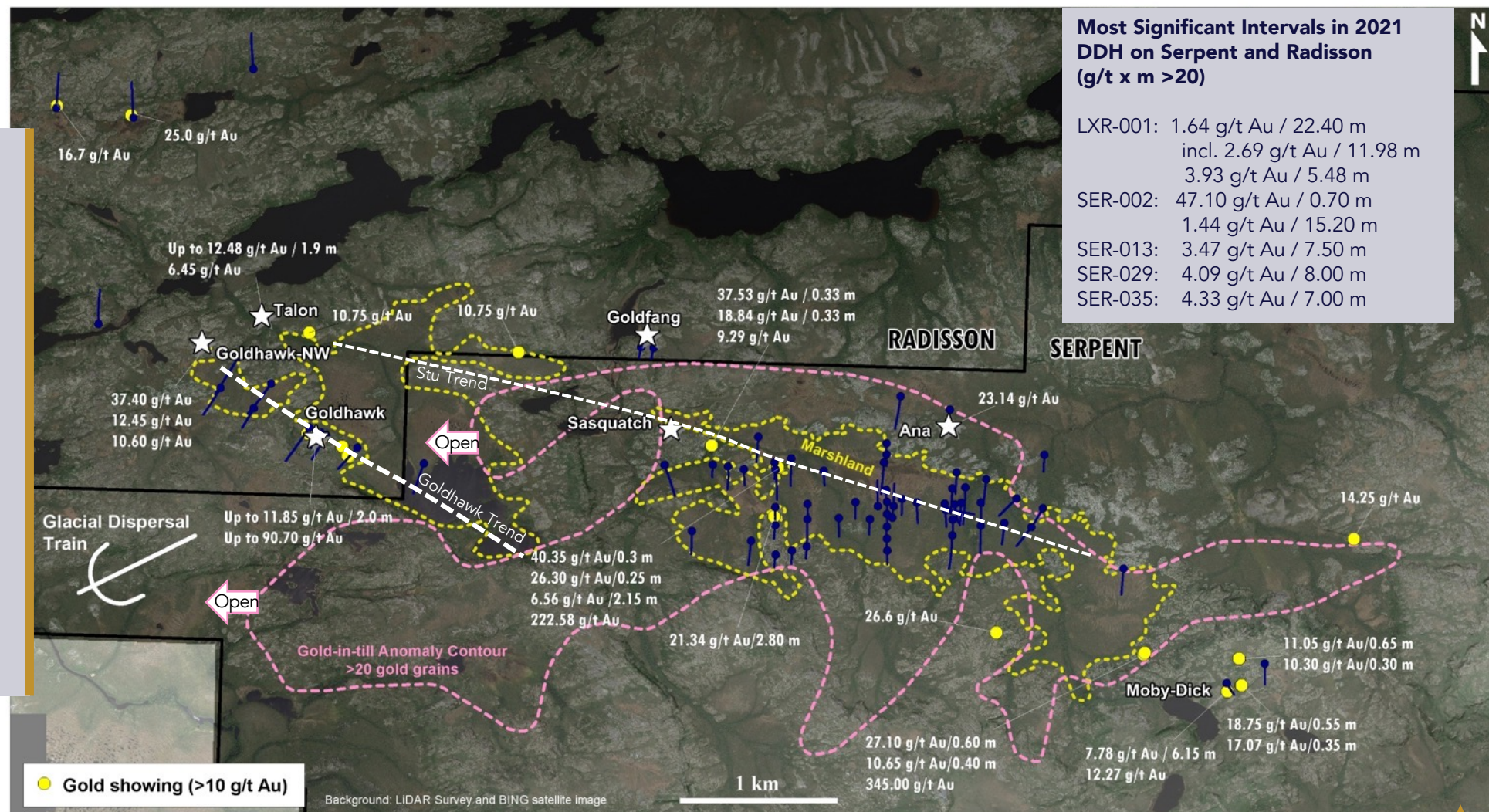
- Discovery of >50 gold showings on Serpent and Radisson properties since 2017
  - ✓ Up to 340 g/t Au (grab), 7.78 g/t Au over 6.15 m (channel), and 1.64 g/t Au over 22.40 m and 4.09 g/t Au over 8.00 m (DDH)
- Numerous newly-discovered high-grade gold occurrences distributed along **structural corridors stretching over 20 km**
- An area encompassing nearly half of the Val-d'Or mining camp**
- Serpent and Radisson properties total 988 claims (50,843 ha), 100% Harfang
- Easy access and nearby infrastructure
- Large part of the combined property remains unexplored**





# Serpent-Radisson: Drilling Confirms Gold Zones Inside the Gold-in-till Anomaly

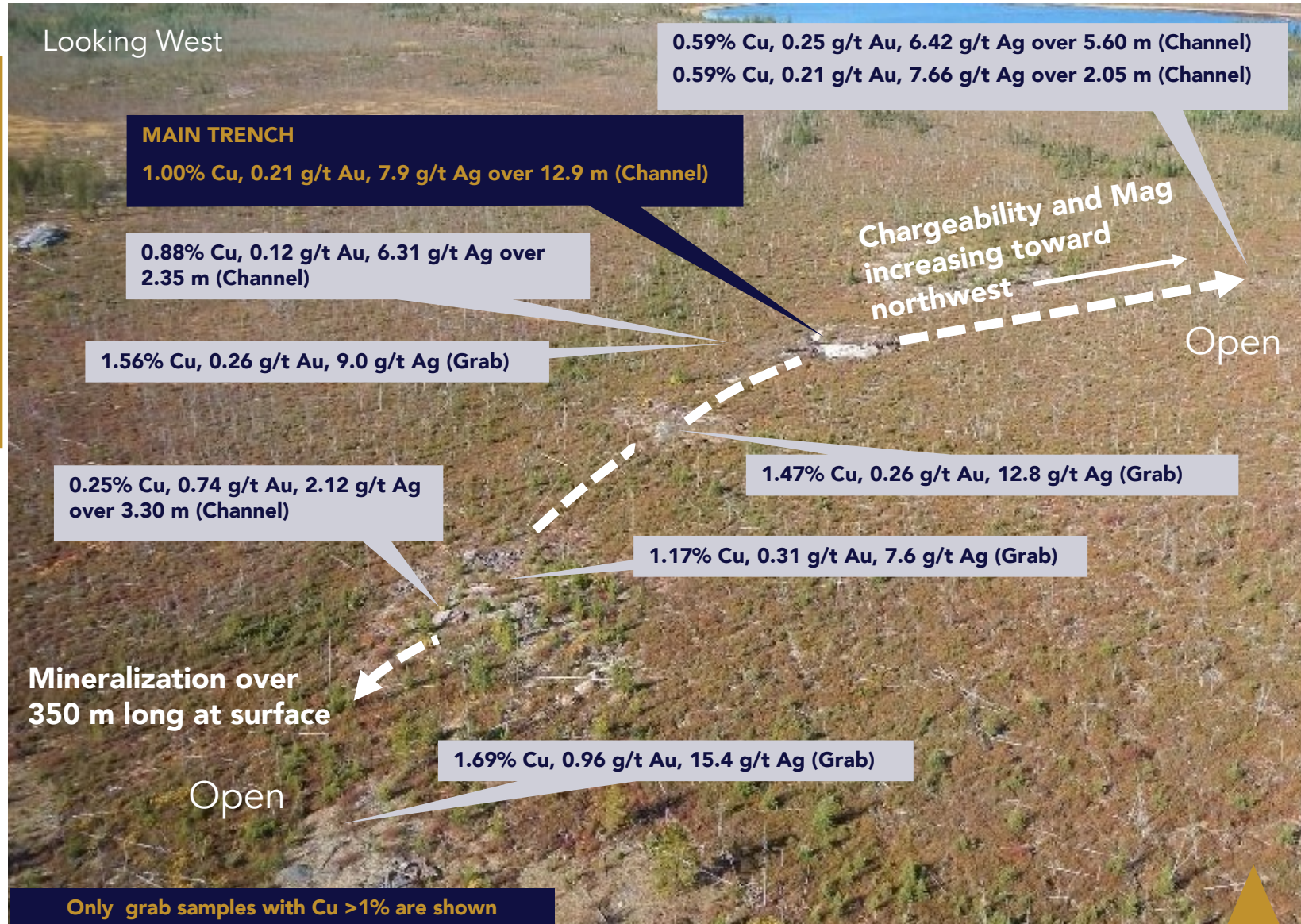
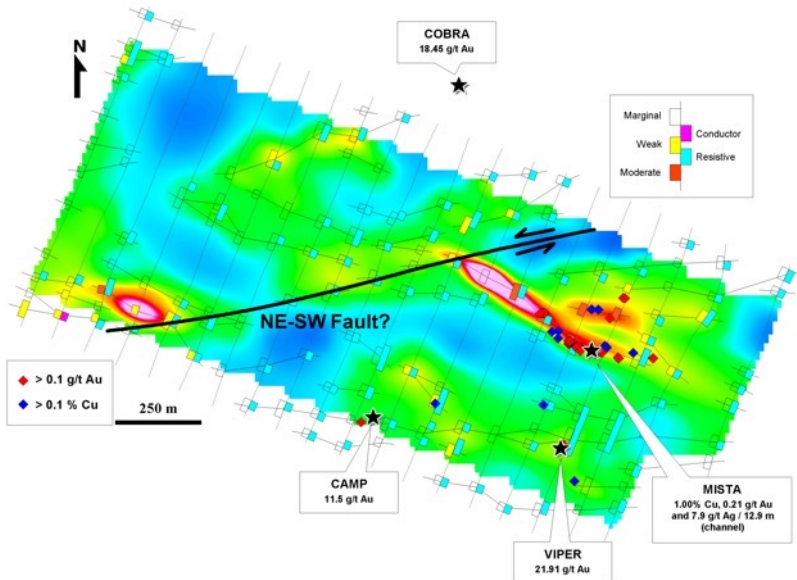
- Significant gold intervals were hit by drillholes up-ice from the gold-in-till anomaly
- The till anomaly may have different bedrock sources for gold, namely the Stu and Goldhawk trends and NE-SW shear zones
- The anomaly remains open toward the southwest and the Radisson property





# Serpent-Radisson: Polymetallic Mineralization at Mista (Cu-Au-Ag)

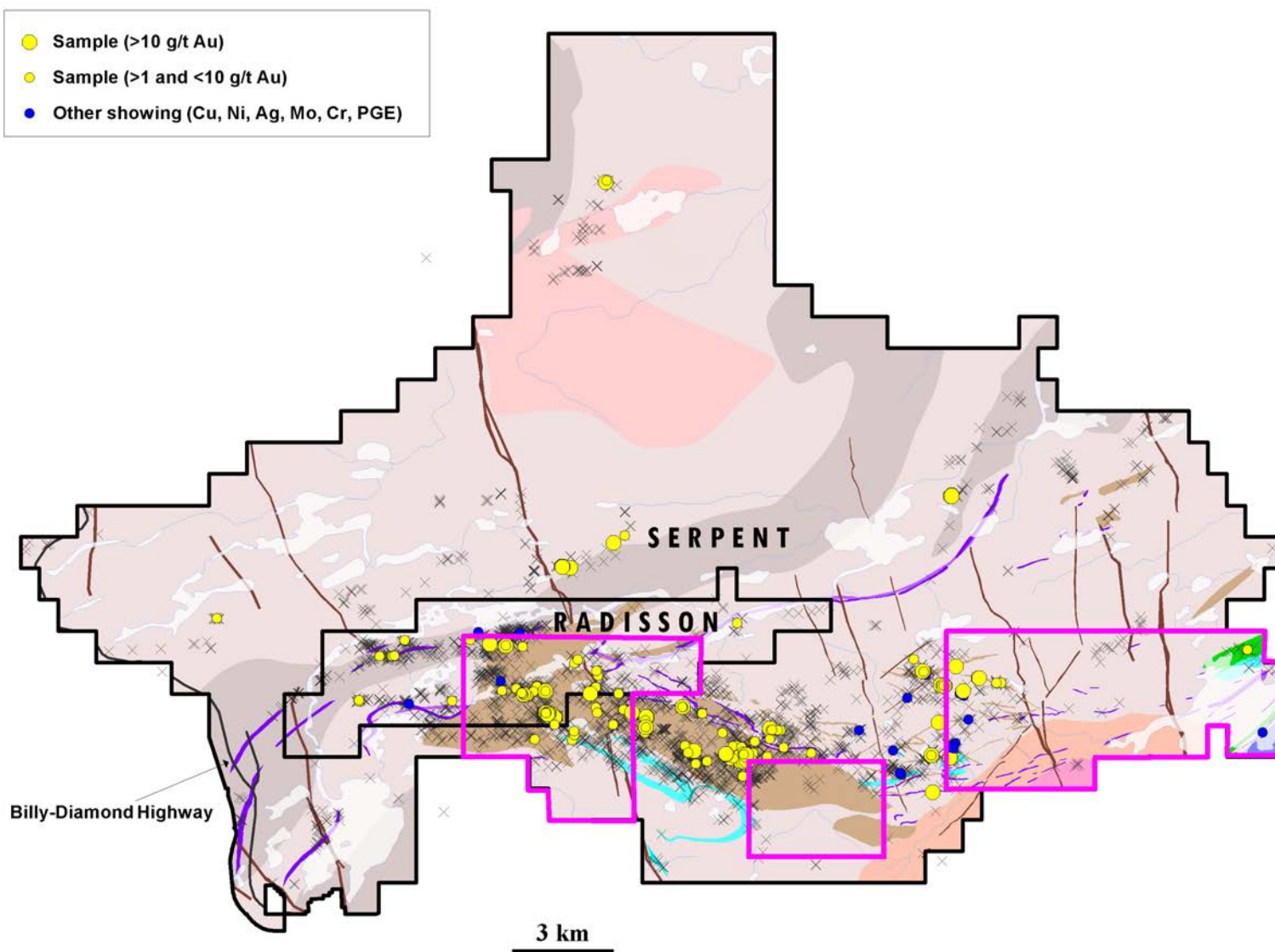
- Cu-Au-Ag at surface identified over 350 m
- IP chargeability axis at least 650 m long
- **Best channel: 1.00% Cu, 0.21 g/t Au and 7.9 g/t Ag over 12.9 m**
- Mineralization associated with a quartz stockwork hosted by fine-grained quartz arenite and wacke at the contact with tonalitic gneiss of the Langelier Complex
- **Drill ready**





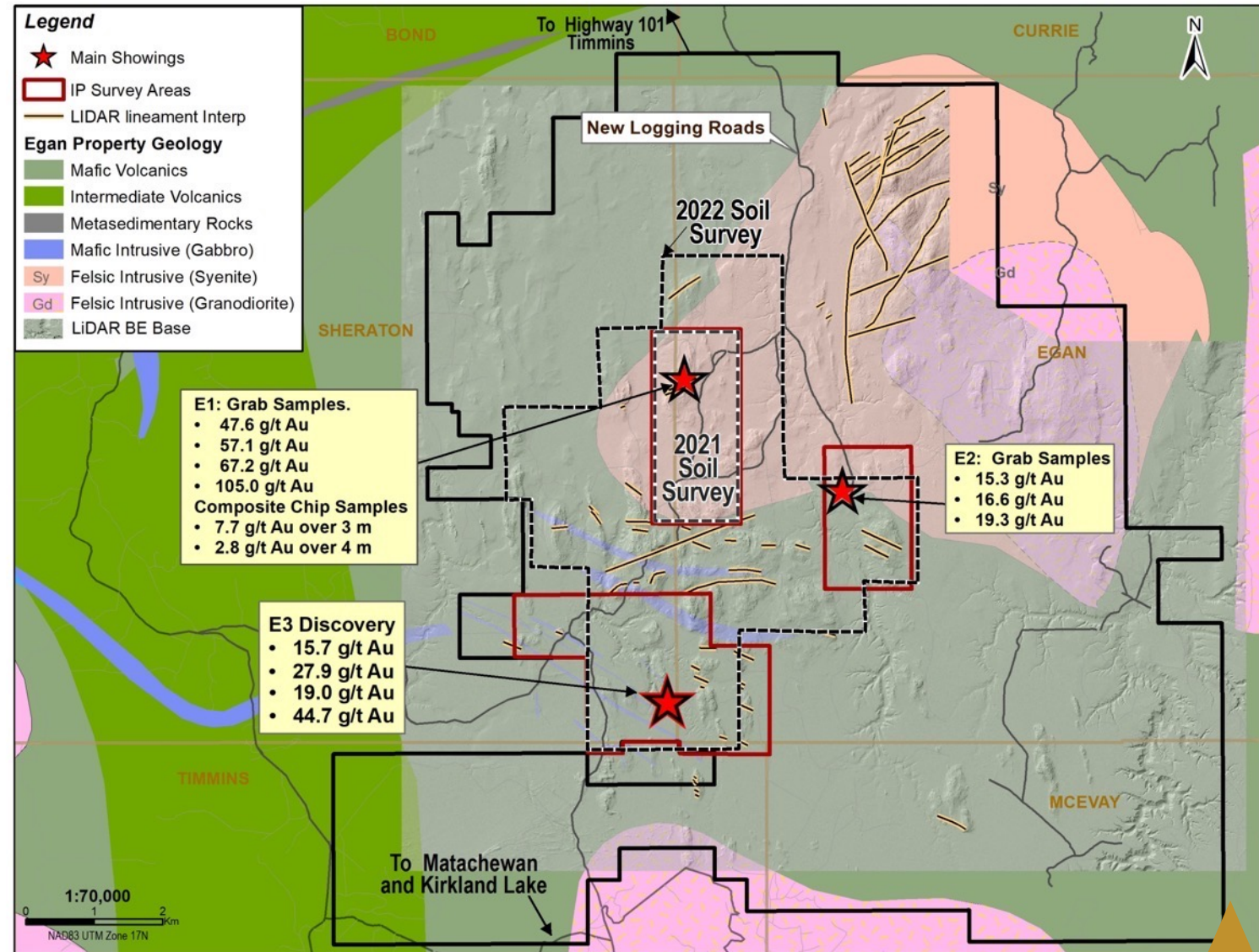
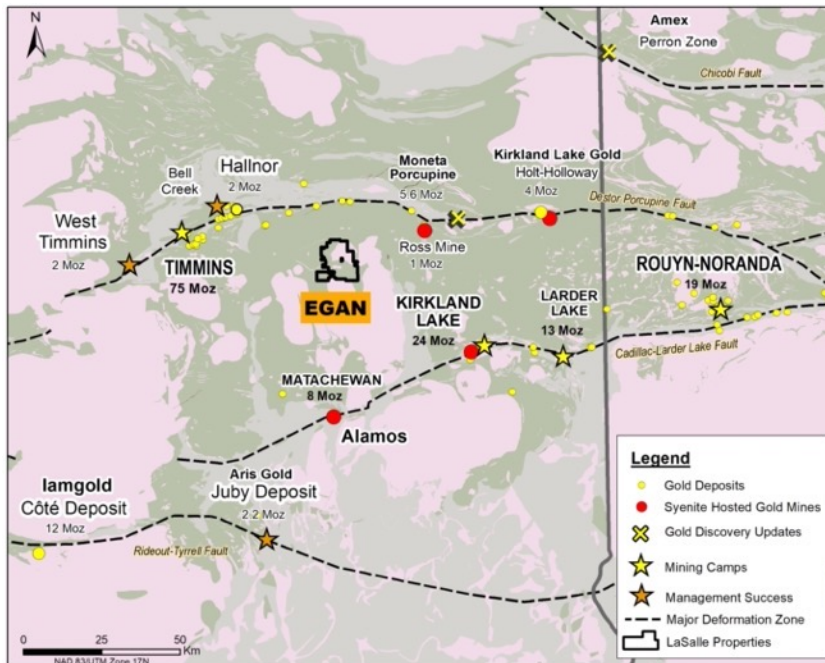
# Serpent-Radisson: Advancing to the Next Phase

- Compilation and interpretation of structural and geologic framework of the main gold corridor
- Analysis of the provenance of the gold-in-till anomaly
- Follow-up of the Mista Cu-Au-Ag occurrence
- Reconnaissance exploration where little or no work has been completed (mainly inside the pink polygons on the figure)
- Follow-up and target drill testing



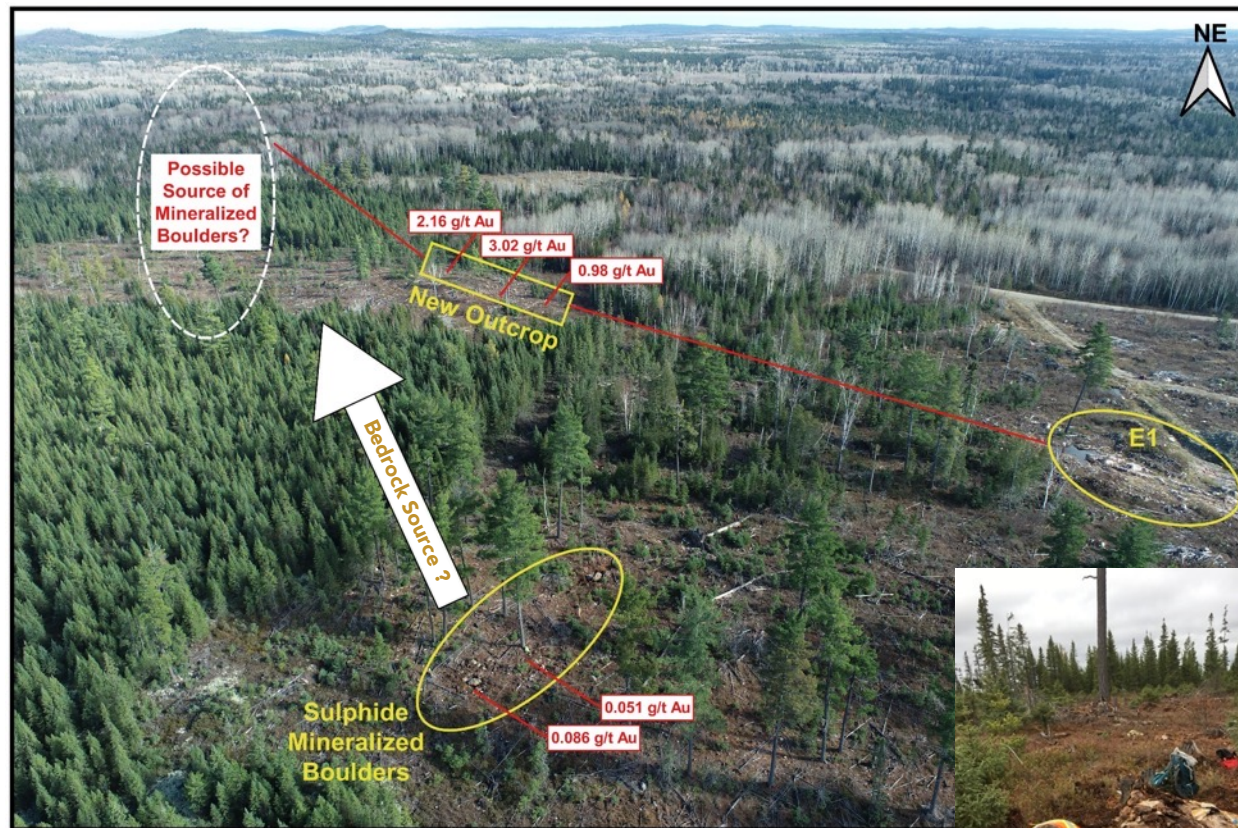
# Egan: Syenite-associated Discovery Gold Between Timmins and Kirkland Lake

- Central to Timmins, Kirkland Lake and Matachewan gold camps
- Multiple high-grade gold occurrences at surface (up to 105 g/t Au; 7.7 g/t Au over 3 m)
- 454 claims (11,720 ha), 100% Harfang
- Good access along new logging roads
- Highly prospective and under-explored geology



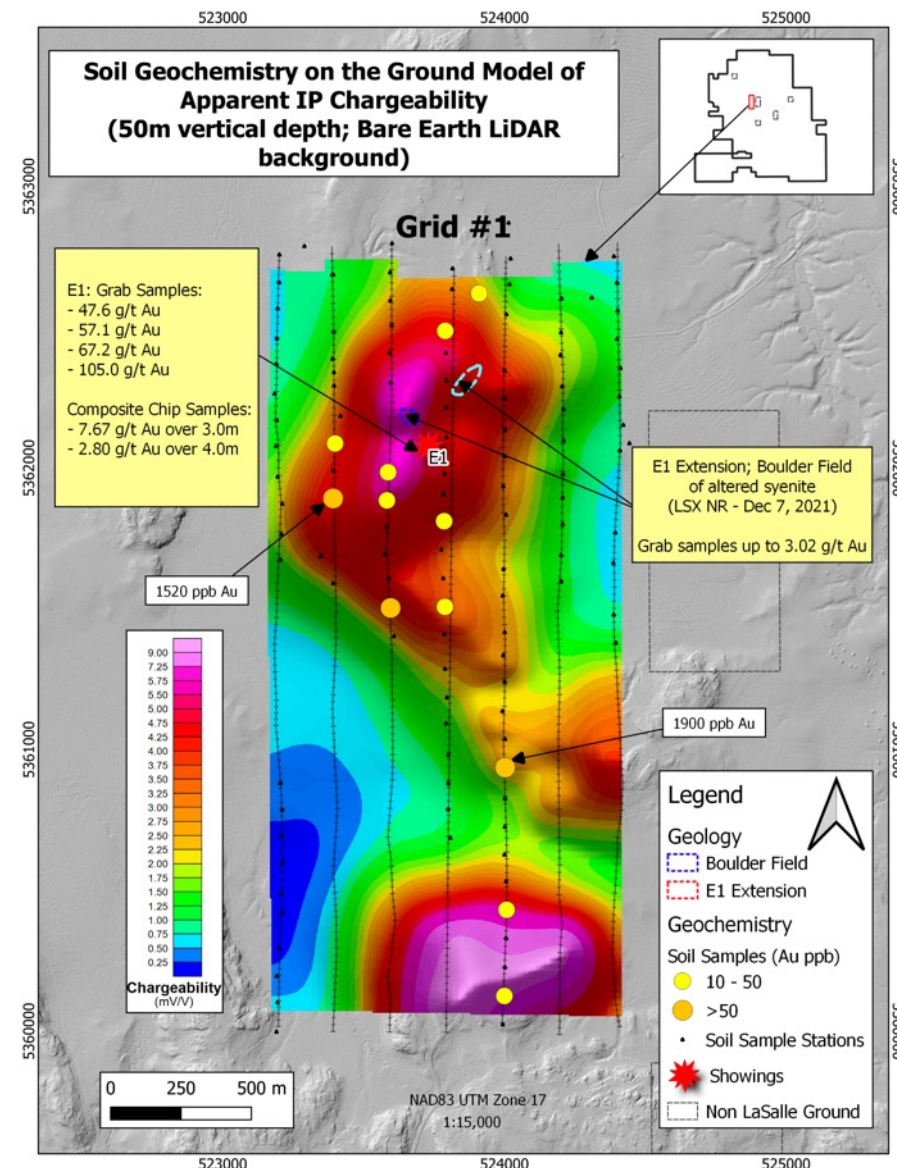


# Egan: Current and Next Steps for 2022



## Current and Future Work

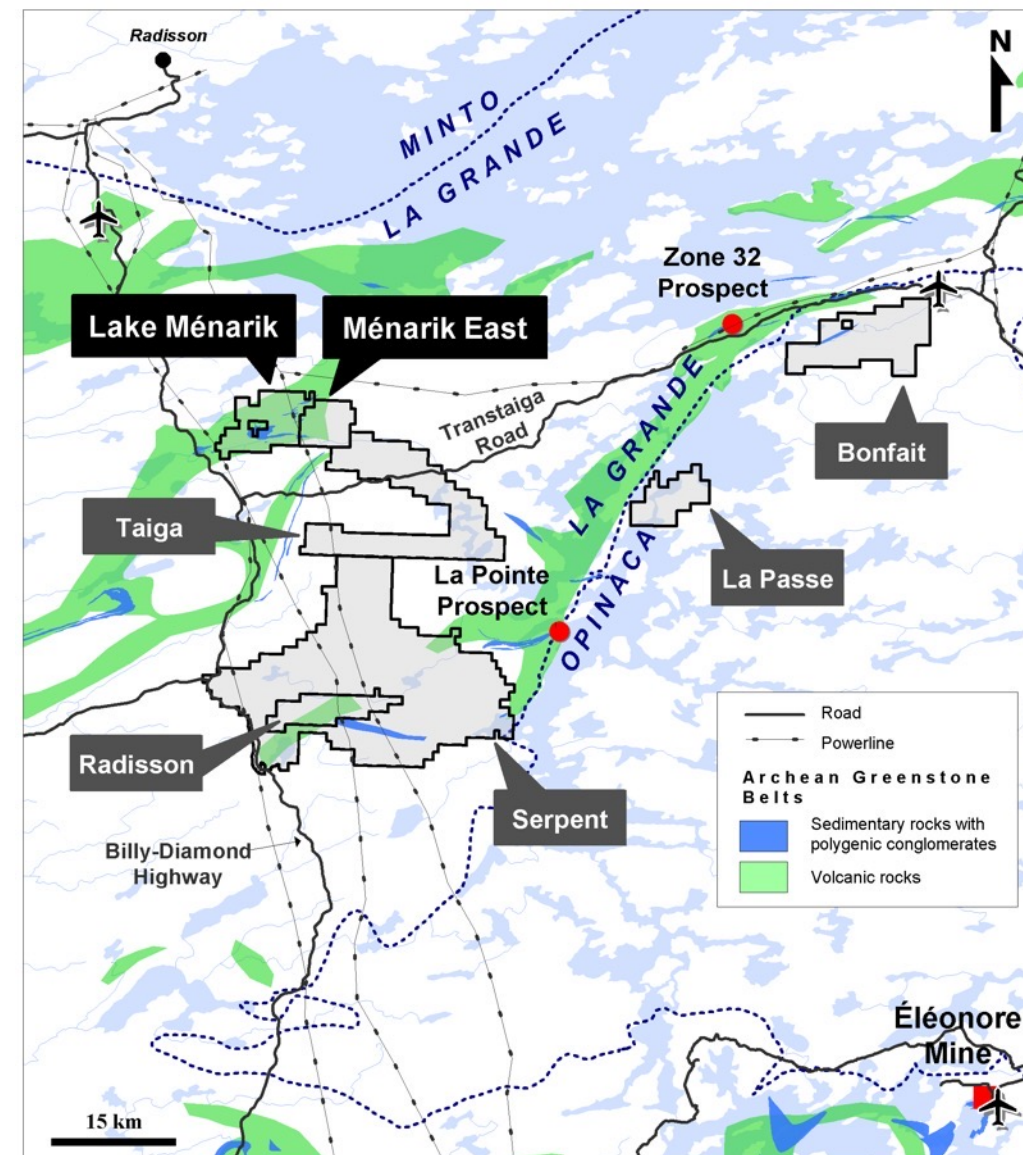
- Geochemical sampling
- Trenching and / or maiden drill program





# The Ménarik Projects: High-grade Gold and Polymetallic Opportunity

- Two Contiguous Projects: Lake Ménarik: 110 claims (5,653 ha), Ménarik East: 64 claims (3,289 ha), both projects are 100% Harfang
- Located 5km from the Billy Diamond Highway, with good access via trails and lakes
- Lake Ménarik Au associated with monzonite and surrounding volcano-sedimentary rocks
- Ménarik East Cr and Ni-Cu with PGE in the Menarik ultramafic-mafic Complex and Au-Ag in shear zones-hosted tonalite and gabbro
- Complete geological compilation underway for both projects
- Summer 2022 exploration will include prospecting, geological mapping and drill targeting



# Lake Ménarik: Monzonite-associated and Mesothermal Lode Gold

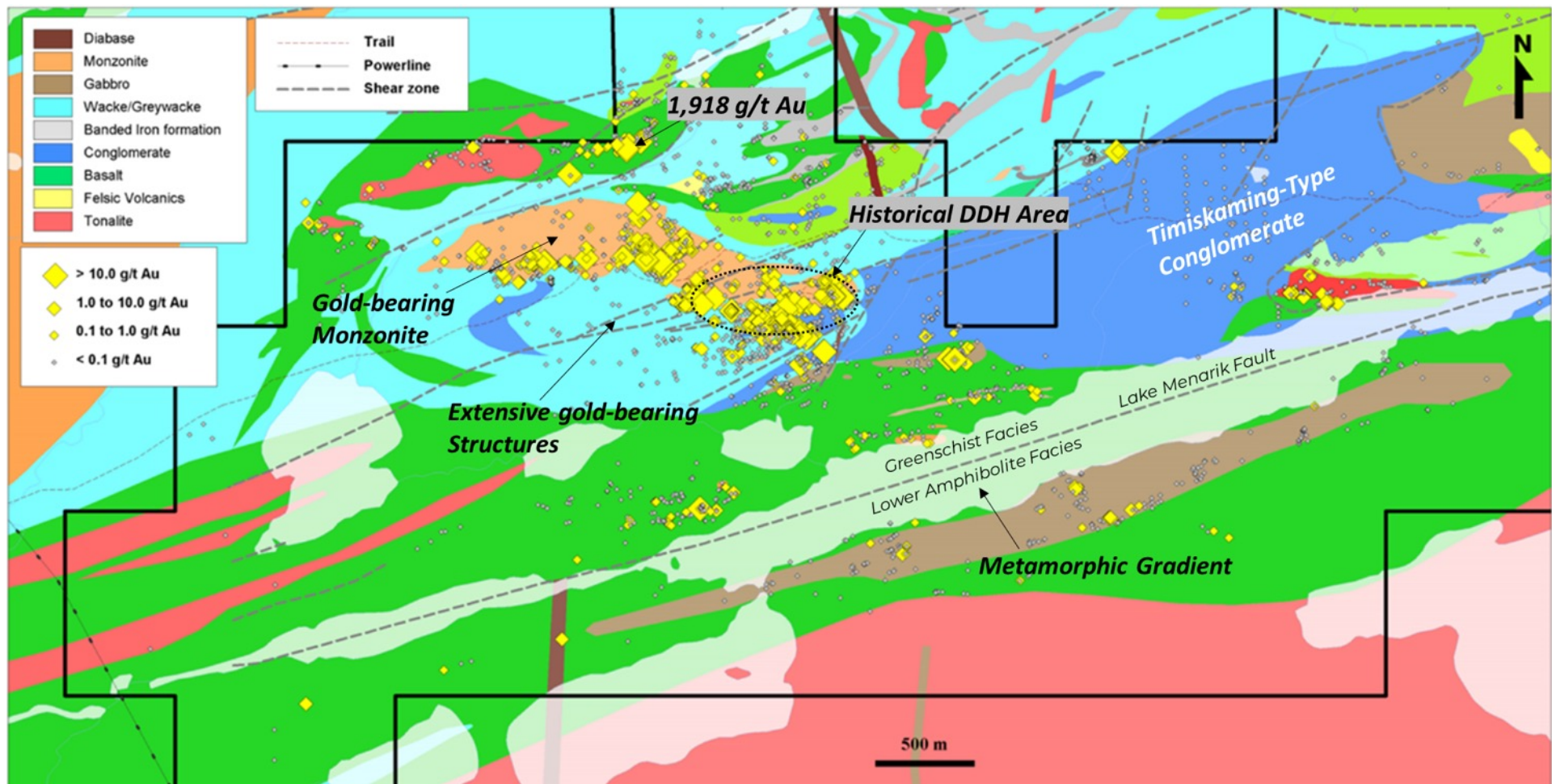
## ■ Highly prospective geology

- ✓ Reminiscent of that of Timmins, Kirkland Lake and Matachewan gold camps; strong similarities with the Egan project

- ✓ Only 17 shallow historical drillholes

## ■ Multiple high-grade gold occurrences

- ✓ Grabs up to 1,918 g/t Au
- ✓ Channels up to 12.46 g/t Au and 25.5 g/t Ag over 3.60 m
- ✓ DDH intersection at 0.89 g/t Au over 69 m (>60 g/t x m)
- ✓ Gold associated with Ag, Te and Bi





# Lake Ménarik: Striking Similarities with Monzonite (Syenite)-associated Gold Deposits

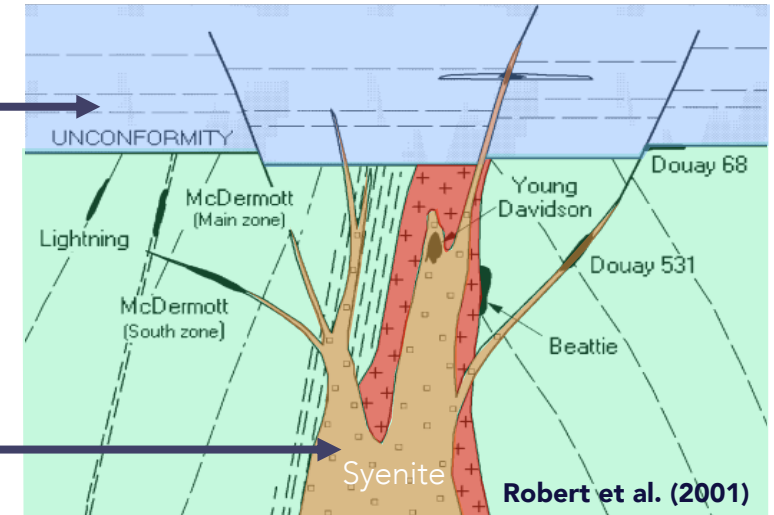
**Timiskaming-Type Conglomerate**









**Strong alteration in hematite, chlorite, silica, sericite and carbonate in the monzonite**



**Brecciated monzonite with sericite, chlorite and quartz (5.83 g/t Au)**



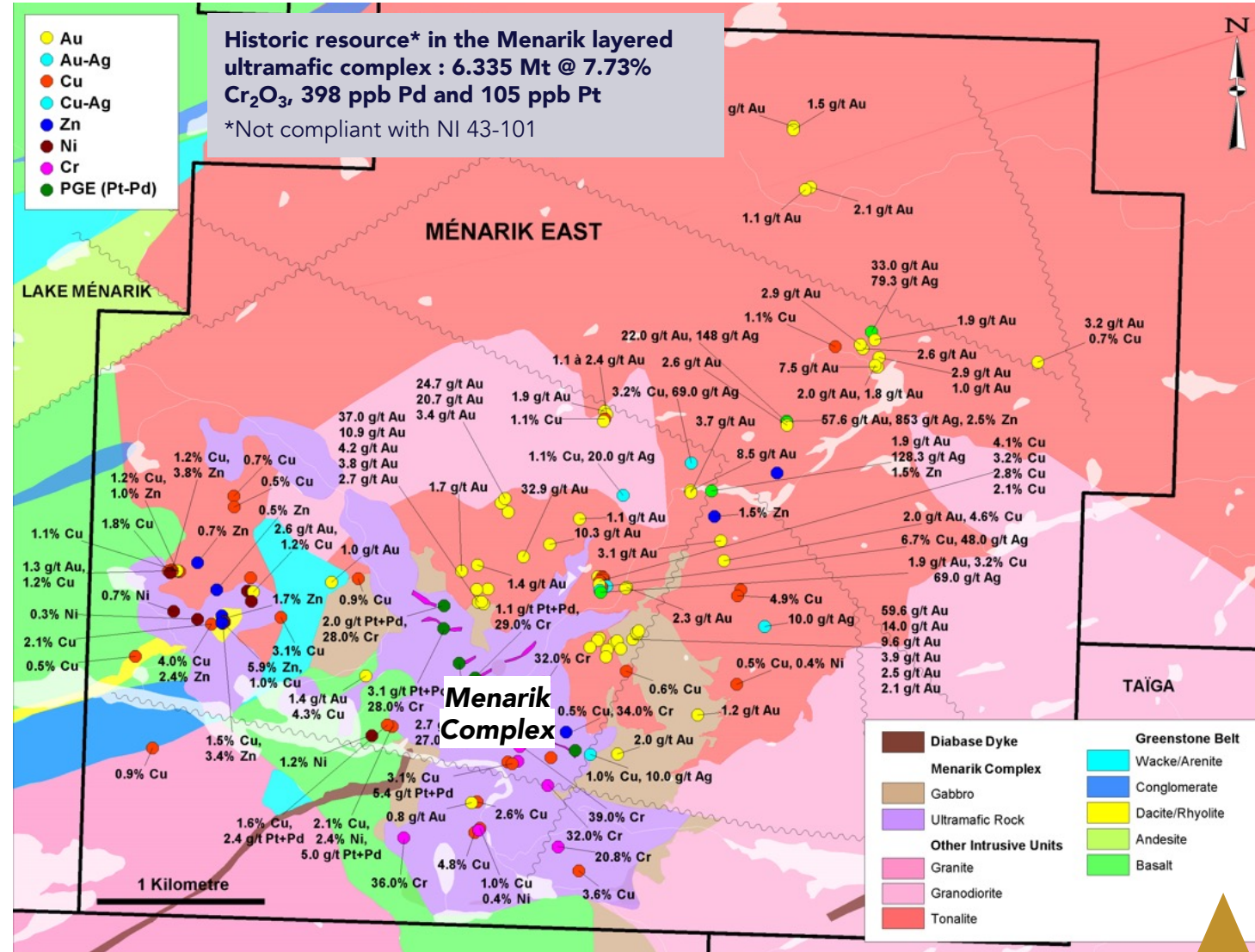
- |  |   |
|--|---|
|  DISSEMINATED OREBODY |  TIMISKAMING-TYPE SEDIMENTARY ROCK |
|  FAULT                |  SYENITE PORPHYRY                  |
|  SHEAR ZONE           |  VOLCANIC ROCK                     |



## Menarik East: Mafic/Ultramafic Polymetallic Play

- **Menarik mafic/ultramafic complex**
  - ✓ Largest historic chromium resource in northern Québec (NI43-101 non-compliant)
  - ✓ PGE in chromites and in nickel sulphides
  - ✓ Up to 1.88% Ni and 0.35% Cu over 4.5 m
- **Structurally-controlled orogenic Au-Ag-As** hosted in intrusive rocks
  - ✓ up to 58 g/t Au and 853 g/t Ag

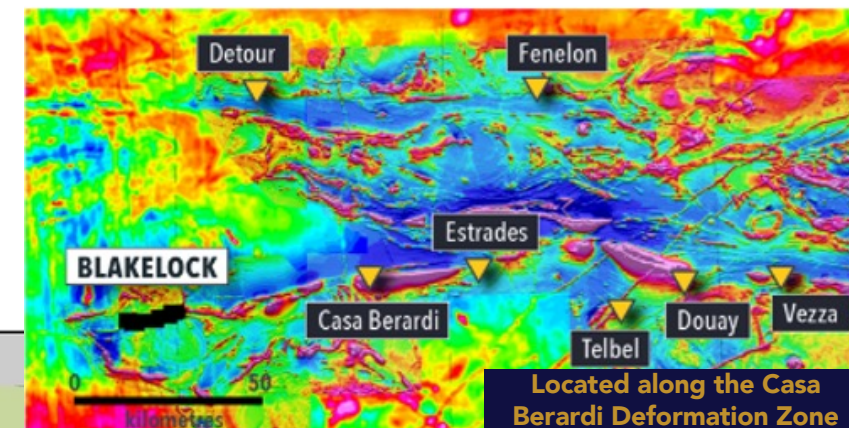
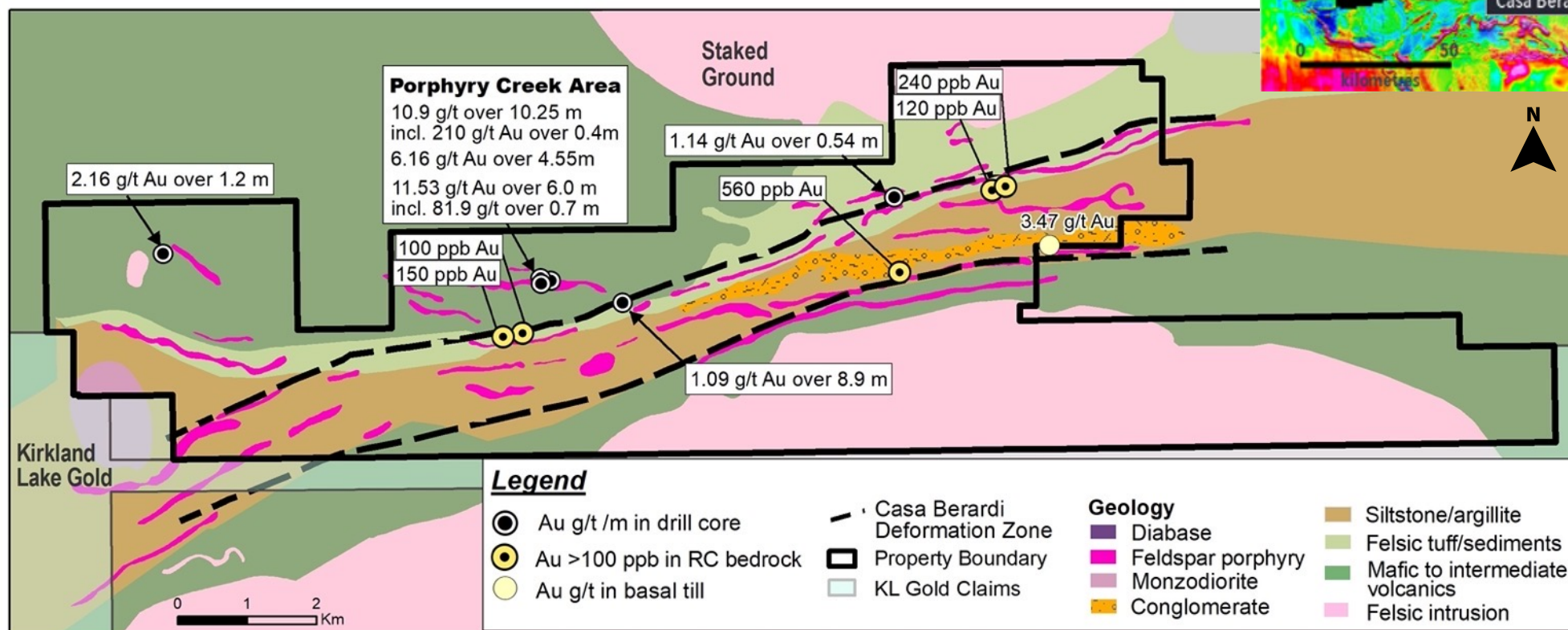
**Typical arsenopyrite- and gold-rich sample from shear zones around the Menarik Complex (up to 58 g/t Au and 853 g/t Ag)**





# Blakelock: Multiple High-grade Gold Targets

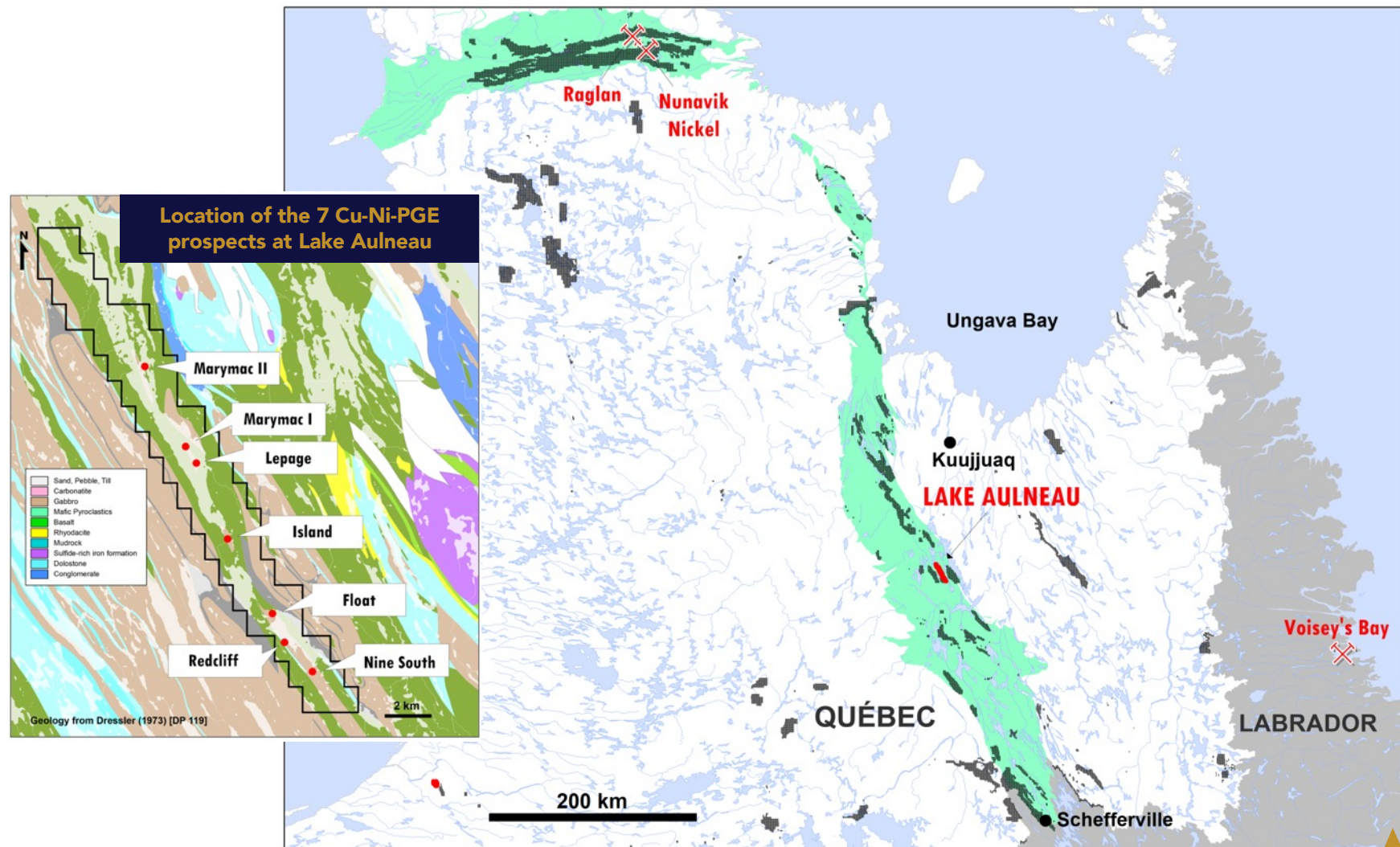
- **340 claims (6,977 ha)** strategically covering 15 km along the Casa-Berardi Deformation Zone (CBDZ)
- **Historical drill intersections include 10.90 g/t Au and 97.5 g/t Ag over 10.25 m and 6.16 g/t Au and 17.7 g/t Ag over 4.55 m**
- Recently completed airborne magnetics and LiDAR surveys (2021)
- **New interpretation demonstrates highly prospective property scale target zone**





# Lake Aulneau: Among the Largest Cu-Ni-PGE Prospects in the Labrador Trough

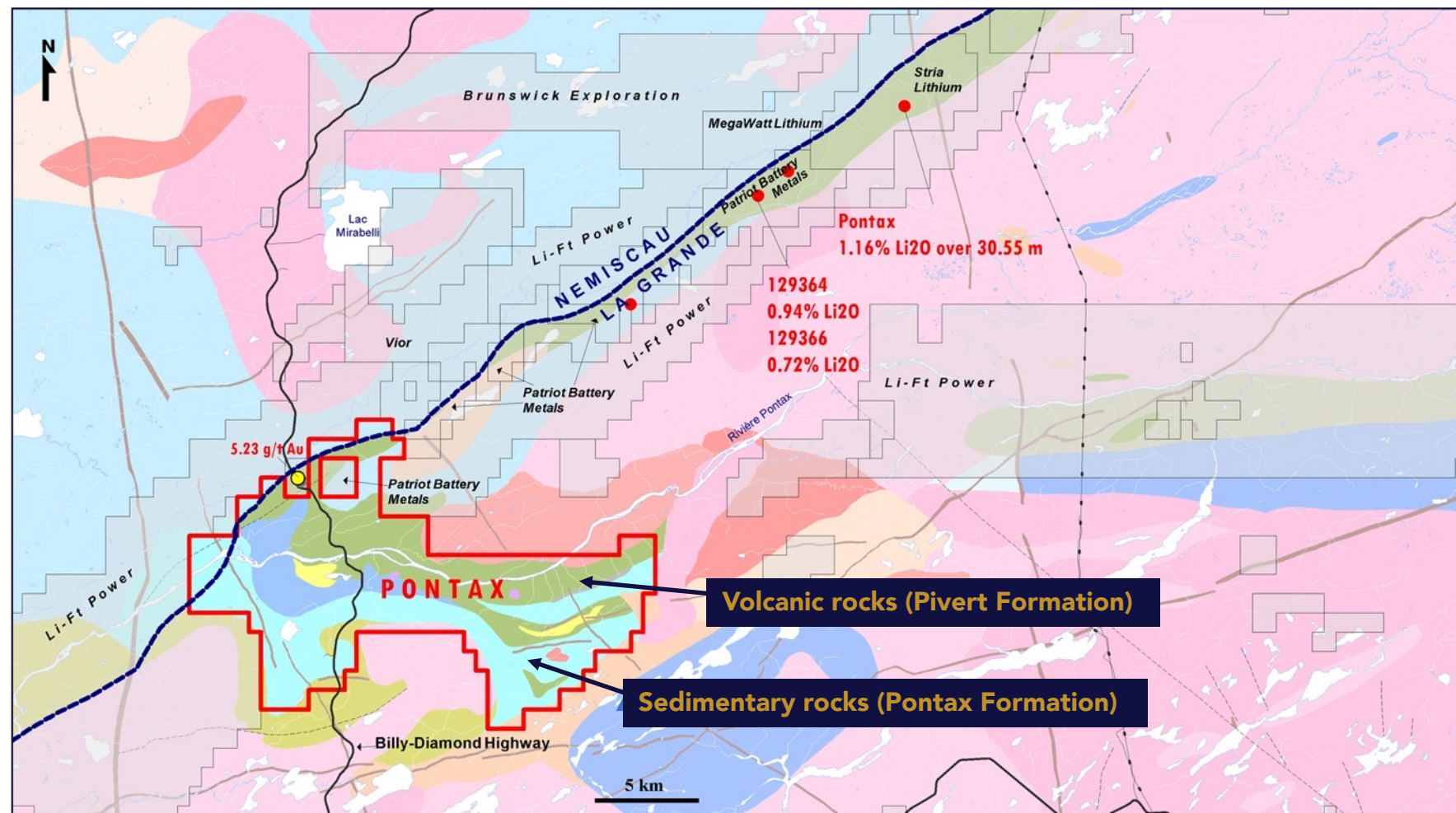
- **7 Cu-Ni-PGE prospects in the Labrador Trough over a strike length of 13 km**
- **Historic non-compliant resources of approximately 2 Mt @ 2% Cu and 0.50% Ni**
- 85 claims (3,995 ha), 100% HAR
- 125 km south of Kuujuaq, access by air transportation
- Disseminated to massive sulphides in Paleoproterozoic gabbro sills
- Historical work from 1950's to late 1980's, approximately 160 DDH
- Maiden field operations by Harfang planned for Summer 2022 (prospecting, site evaluation, drill targeting)



## Pontax:

# Lithium and Gold Potential near the Contact between two Subprovinces

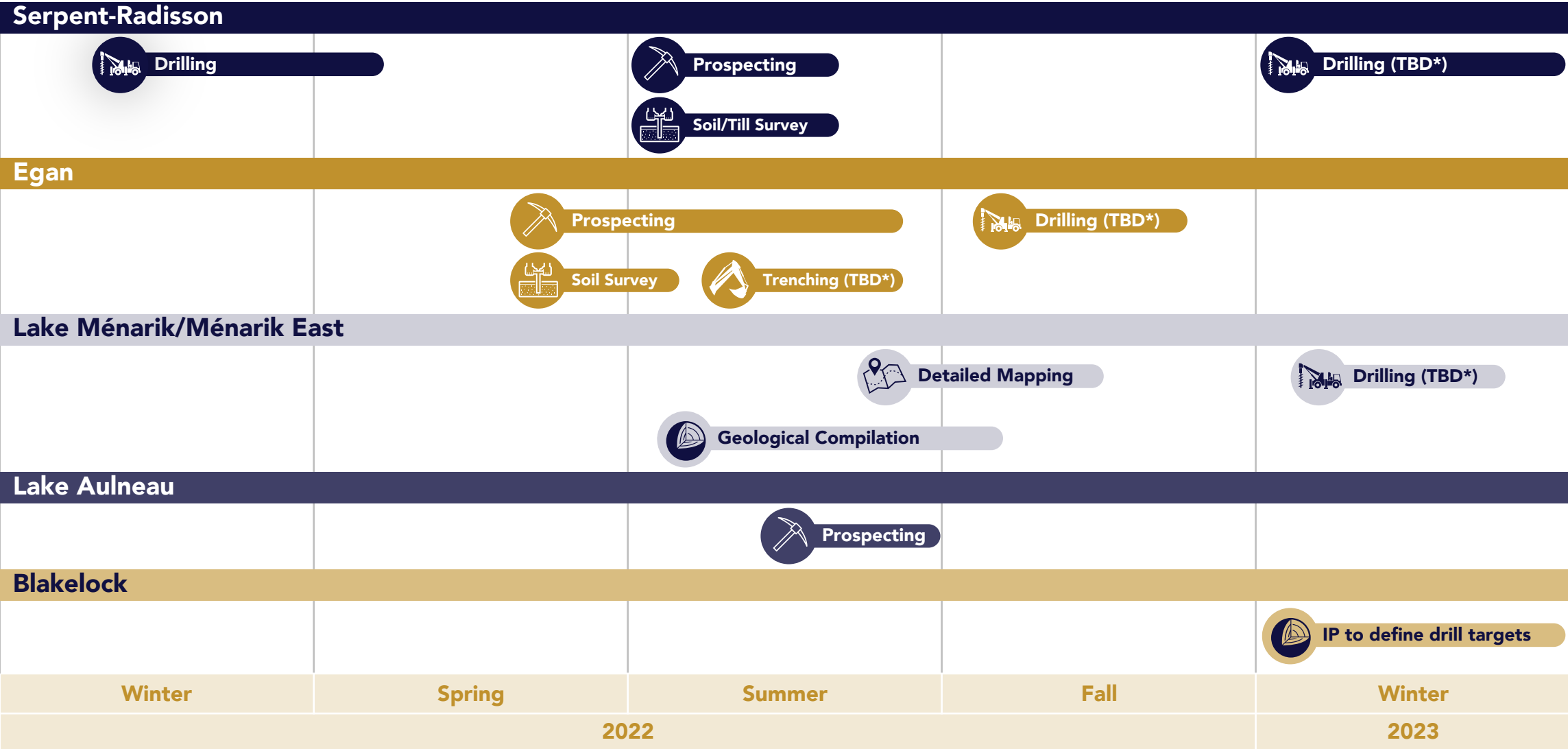
- **Geological context highly favorable for lithium and gold**
- 287 claims (15,323 ha), 100% HAR
- Easy access along the Billy-Diamond Highway
- Dominated by regionally folded volcano-sedimentary rocks near the structural contact between the Nemiscau and La Grande subprovinces
- **Region targeted by several companies for its lithium potential**






 Merger Completed between  
 Harfang and LaSalle

\*TBD: To Be Determined







**HARFANG**  
— **EXPLORATION INC.** —

For further information please contact:

**IAN CAMPBELL**

**President and CEO**

+1-647-680-3820

[icampbell@harfangexploration.com](mailto:icampbell@harfangexploration.com)

**FRANÇOIS HUOT**

**Vice-President, Exploration**

+1-581-996-2135

[fhuot@harfangexploration.com](mailto:fhuot@harfangexploration.com)

**CORPORATE ADDRESS**

1100, av. des Canadiens-de-Montréal, suite 300,  
Montréal (Québec) H3B 2S2

**TSXV:HAR**