



SNOWLINE GOLD CORP

Exploring district-scale gold
systems in the Selwyn Basin

A new light on the Yukon

Precious Metals Summit

November 2021

CSE: SGD | OTCQB: SNWGF

FORWARD LOOKING STATEMENT **CAUTIONARY DISCLAIMER**

The information in this presentation is in a summary form and does not purport to be complete. It is not intended to be relied upon as advice to investors or potential investors and does not take into account the investment objectives, financial situation or needs of any particular investor.

This presentation includes certain statements that may be deemed "forward looking statements". All statements in this presentation, other than statements of historical facts, that address events or developments that Snowline expects to occur, are forward looking statements, including statements relating to the use of proceeds from the financing and property exploration plans. Forward looking statements are statements that are not historical facts and are generally, but not always, identified by the words "expects", "plans", "anticipates", "believes", "intends", "estimates", "projects", "potential" and similar expressions, or that events or conditions "will", "would", "may", "could" or "should" occur. Such statements reflect Snowline's current views and intentions with respect to future events, and current information available to Snowline, and are subject to certain risks, uncertainties and assumptions. Many factors could cause the actual results, performance or achievements that may be expressed or implied by such forward-looking information to vary from those described herein should one or more of these risks or uncertainties materialize.

Certain of the "risk factors" that could cause actual results to differ materially from the Company's forward-looking statements include, without limitation risks relating to the following: risks to operations in the Yukon; political instability; nationalization of the mining industry; opposition from local residents and non-governmental organizations; changes to governmental regulations or regulatory requirements in the Yukon; environmental risks; licensing and permitting risks; substantial capital requirements; no mineral resources or reserves on Snowline's properties; development and operating risks; reliance on management and dependence on key personnel; health and safety risks; fluctuating mineral prices; currency fluctuations; supply chain interruptions; and other factors beyond the control of the Snowline. Should any factor affect Snowline in an unexpected manner, or should assumptions underlying the forward-looking information prove incorrect, the actual results or events may differ materially from the results or events predicted. Any such forward-looking information is expressly qualified in its entirety by this cautionary statement. Moreover, Snowline does not assume responsibility for the accuracy or completeness of such forward-looking information. The forward-looking information included in this presentation is made as of the date of this presentation and Snowline undertakes no obligation to publicly update or revise any forward- looking information, other than as required by applicable law.

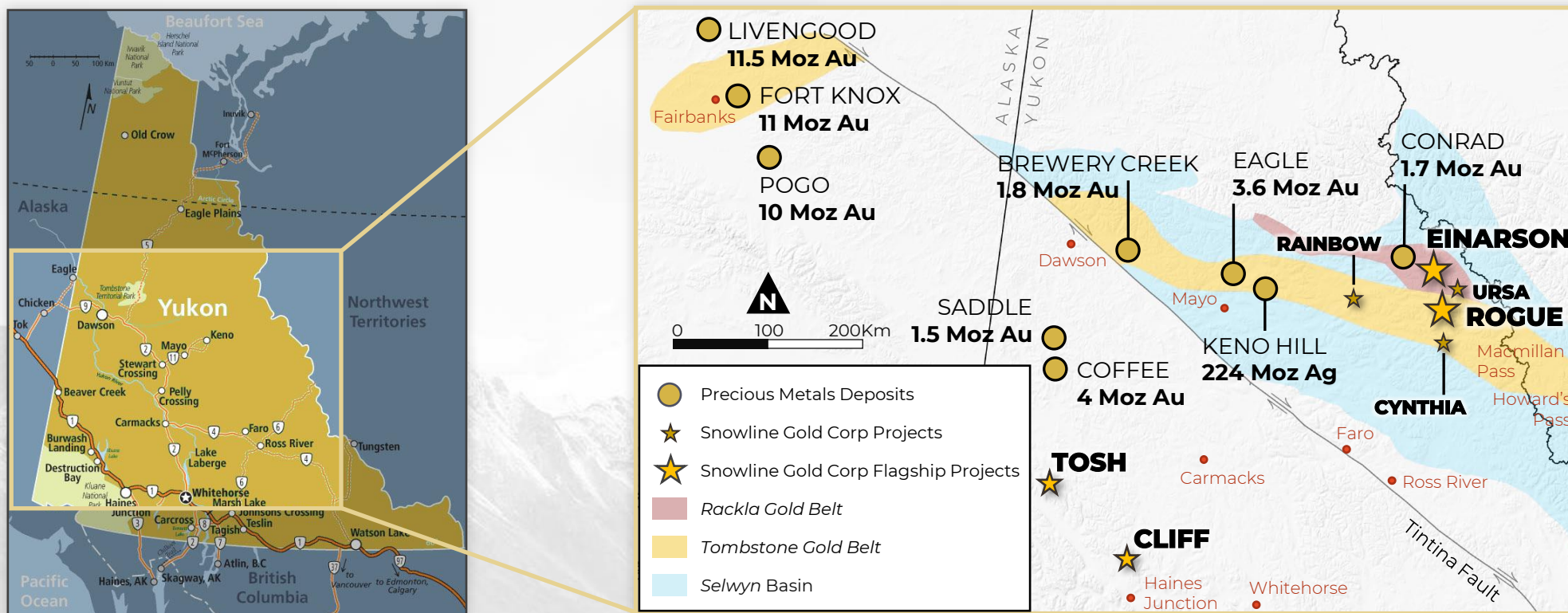
This presentation has been prepared by Snowline using its best efforts to realistically and factually present the information contained herein. However, subjective opinion, dependence upon factors outside Snowline's control and outside information sources unavoidably dictate that Snowline cannot warrant the information contained to be exhaustive, complete or sufficient. In addition, many factors can affect the Presentation which could significantly alter the results intended by Snowline, rendering the Presentation unattainable or substantially altered. Therefore, readers should conduct their own assessment and consult with their own professional advisors prior to making any investment decisions.

This presentation does not constitute a prospectus or public offering for financing, and no guarantees are made or implied with regard to Snowline's proposed ventures. There is no guarantee that valuable minerals can be produced profitably from our projects, or at all. The presentation is being disclosed to the reader for the reader's discussion, review, and/or evaluation only. The reader agrees to hold the presentation, and all related information and discussions, in strict confidence, except that the reader may disclose the presentation to a limited number of advisors and employees of the reader to the extent necessary for the reader to adequately evaluate the presentation. The reader warrants that any such persons shall be advised of the confidential nature of the presentation before gaining access to the same and that no such advisor or employee shall use or disclose the presentation except as permitted by this presentation. Historical Geological Information: Any geological information and results presented which were not conducted by Snowline are believed to be accurate but have not been verified.

Qualified Person: J. Scott Berdahl, P.Geo., Snowline's Chief Executive Officer and a director, is the qualified person under NI 43-101 for the Company. He has reviewed, approved and verified the technical content of this presentation.

This presentation does not constitute an offer to sell or the solicitation of an offer to buy, nor shall there be any sale of the securities of Snowline in any jurisdiction in which such offer, solicitation or sale would be unlawful prior to registration or qualification under the securities laws of such jurisdiction. The securities of Snowline have not been and will not be registered under the United States Securities Act of 1933, as amended (the "U.S. Securities Act"), or any state securities laws and may not be offered or sold within the United States, unless an exemption from such registration is available, information concerning the assets and operations of Snowline included in this presentation has been prepared in accordance with Canadian standards and is not comparable in all respects to similar information for United States companies.

A NEW LIGHT ON THE YUKON



- Snowline's flagship, **district-scale gold projects** occupy the intersection of two mineral belts
- **Established targets**, with high grades and potential for world-class scale
- **\$20M+ spent** by previous operator on regional exploration affords rapid, low cost entry
- "Elephant country" in the **Selwyn Basin**, an under-explored geological analogue to Nevada's Great Basin

A NEXT-GENERATION EXPLORER



Snowline Gold is driven by **four guiding principles**:

1) Environmental respect

Recognition that the Yukon's wilderness is an invaluable asset with a commitment to responsible exploration

2) Building community

Working to benefit local communities and the Yukon Territory with skills training, economic opportunities and local partnerships

3) Going big

Exploring blue-sky concepts in fertile rocks to make game-changing discoveries

4) Doing it right

A commitment to integrity and exceeding best practices, to safety, scientific rigour and stewardship of shareholder's funds

BUILT ON DECADES OF DISCOVERY



- Snowline's portfolio spun out from private, Yukon-based, **family-owned prospecting company**
- Over **30 years' exploration** in the Yukon, pursuing new ideas in prospective geology
- **>1% of the Yukon's surface area** previously staked and optioned, generating large datasets, discoveries and fresh ideas

THE TEAM



Scott Berdahl, MSc, MBA, PGeo
CEO & Director, Co-Founder



Matthew Roma, CPA
CFO



Craig Hart, PhD, FSEG, FGAC
Independent Chair



Sarah Weber, BSc, MBA, PGeo
Independent Director



Gunther Roehlig
Independent Director



Ron Berdahl, BSc
Technical Advisor
Co-Founder



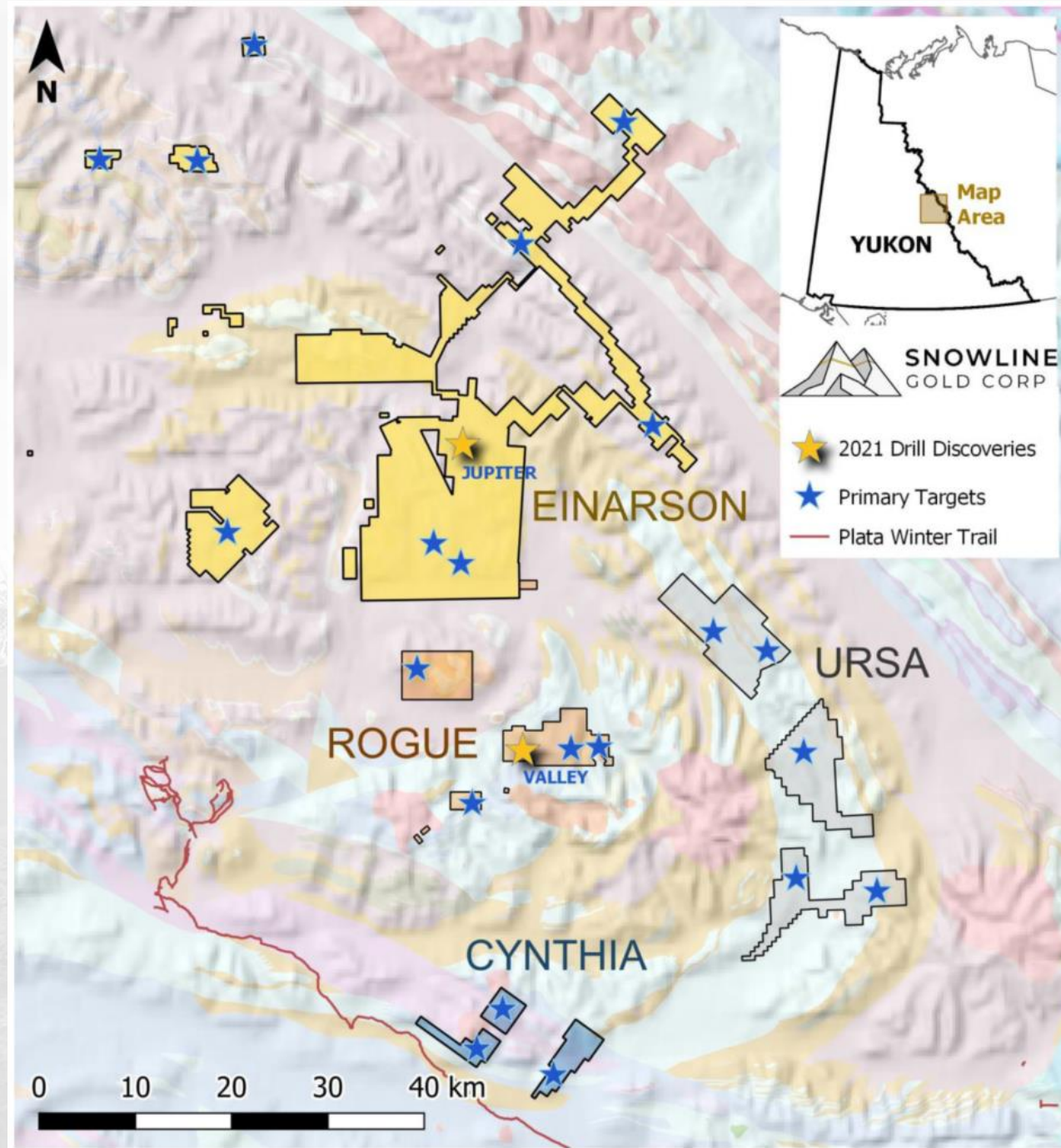
Paul Matysek, MSc
Technical Advisor



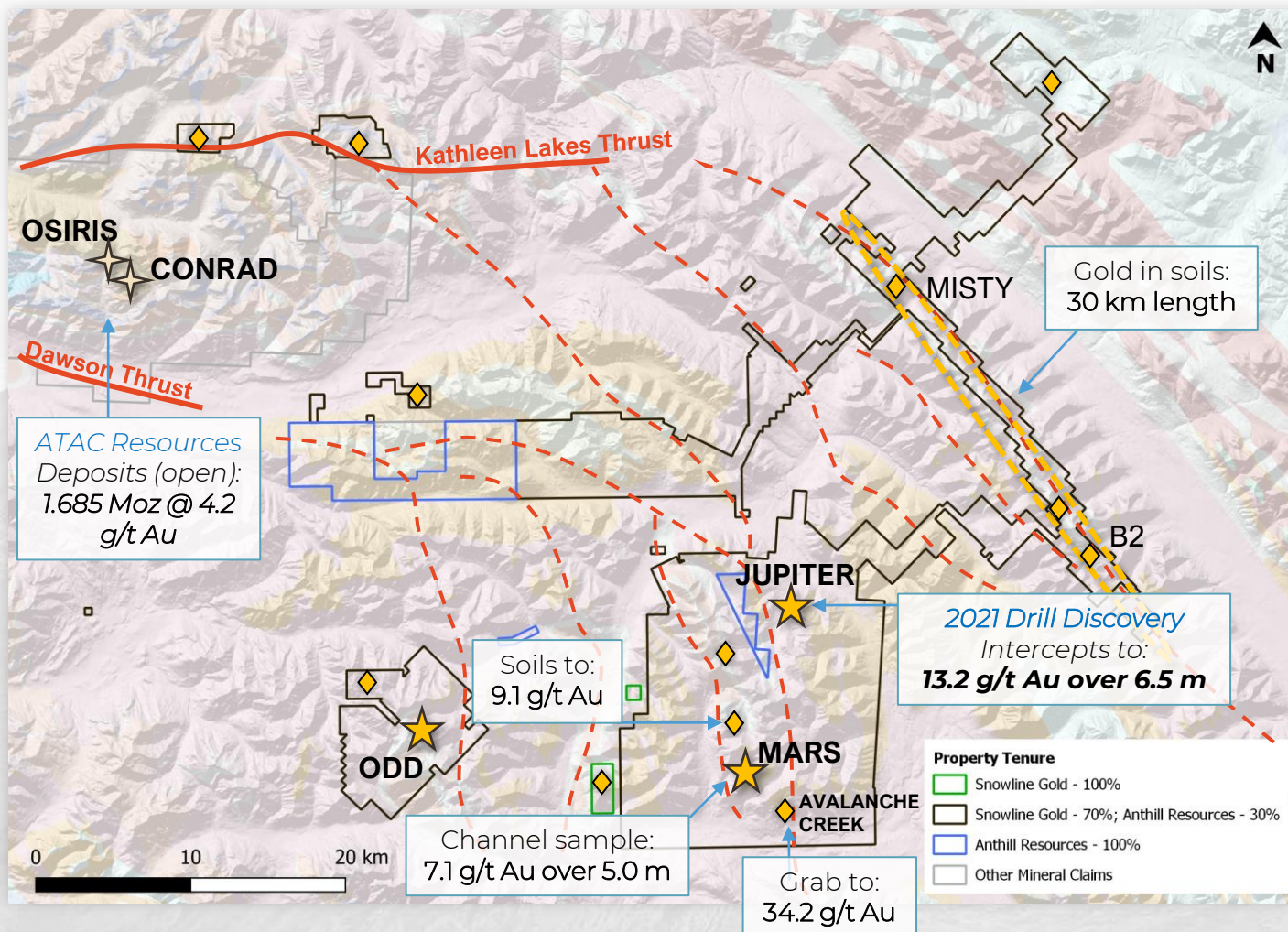
Quinton Hennigh, PhD
Technical Advisor to
Crescat Capital

UNEXPLORED ELEPHANT COUNTRY

- **100,000 ha land package** staked and acquired following detailed regional assessment
- Geological analogue to Nevada's prolific **Great Basin**, intruded by **Fort Knox** style plutons
- **Two drill discoveries in Snowline's first year**, with high grades and visible gold
- Extensive geochemical database comprising **>30,000 soil** & **>6,500 silt samples**
- Remote, but accessible: Targets near 1970s winter access road to Plata Mine



EINARSON GOLD DISTRICT

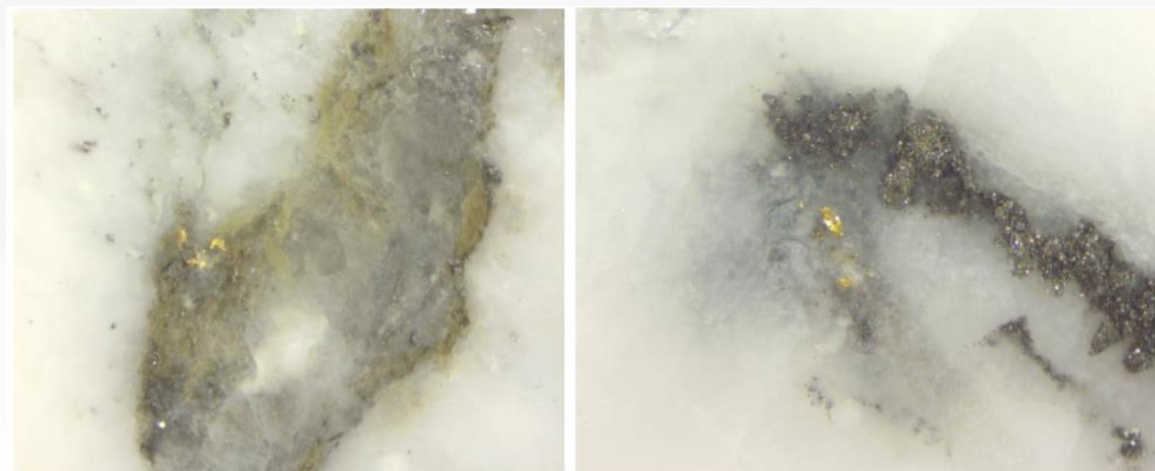
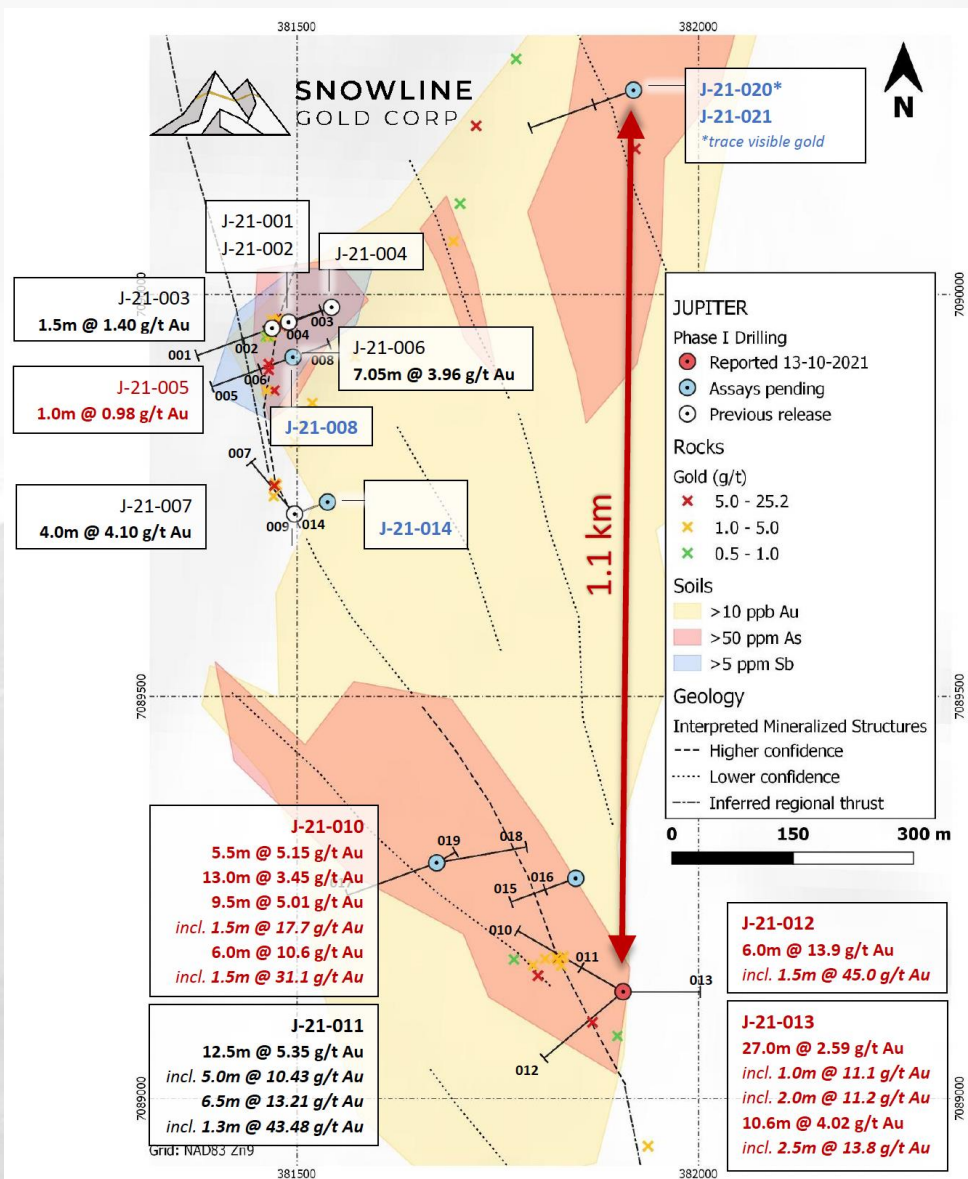


3 km mineralized float train, Jupiter zone

- Total greenfield: **Zero gold-focused exploration prior to 2010** in Luxembourg-sized area
- Favourable stratigraphy and structures with potential to host **multiple gold trends**
- **Epizonal orogenic gold** discoveries, with prospective **Carlin-style gold** targets
- Controlling **70% interest**, pursuing 100% reconsolidation

★ = Drilled prospects ◆ = Target zones ☆ = Gold deposits

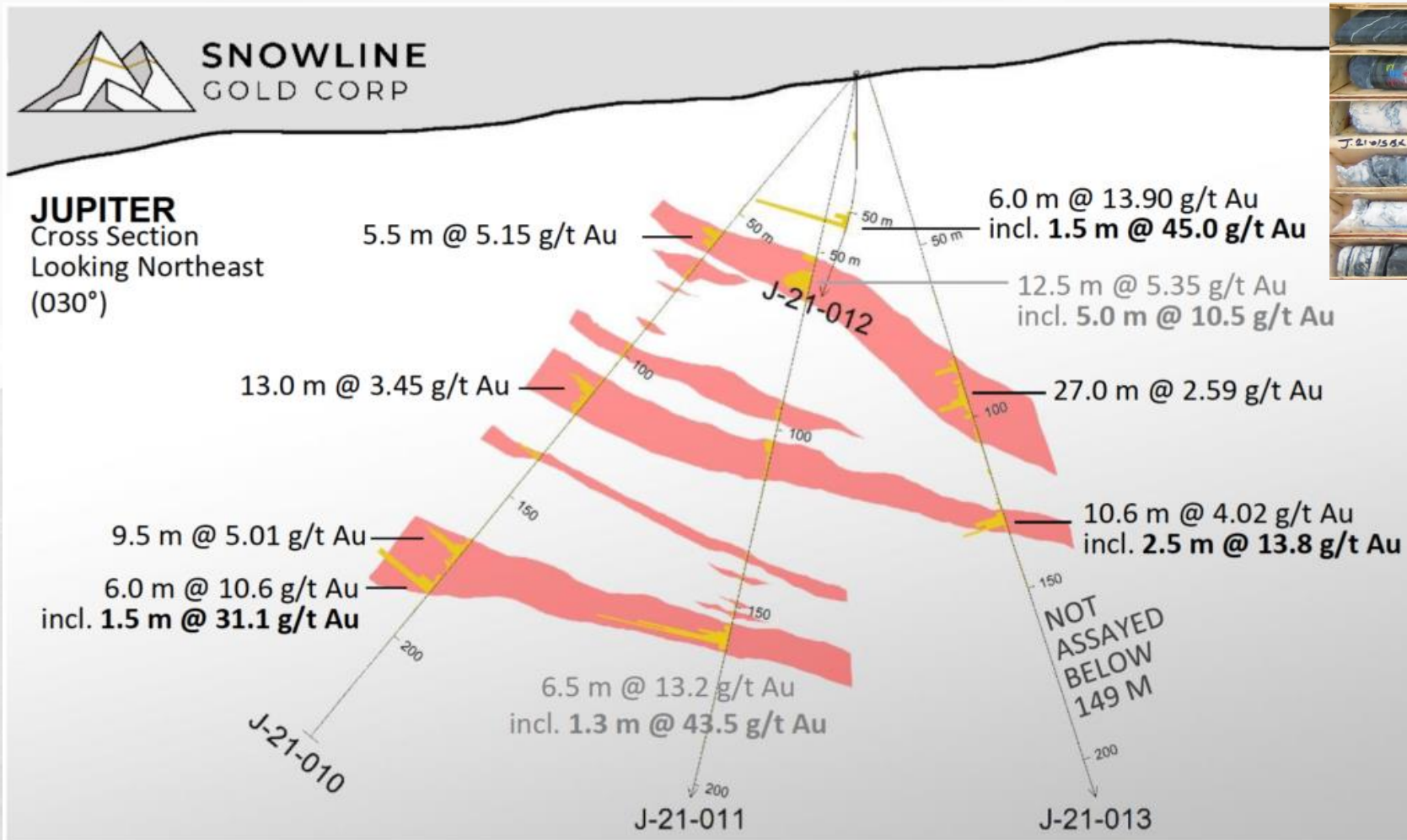
EINARSON – JUPITER DISCOVERY



Visible gold in hole J-21-020 (assays pending)

- **Widespread gold mineralization** to **63.9 g/t Au** (over 0.3 m) encountered in first-ever drilling at Jupiter in 2021
- **Open, 3 km zone** of elevated to anomalous gold in soils – only 1.1 km drill-tested to date
- Potential analogues include Agnico's **Fosterville Gold Mine** and New Found Gold's **Queensway discoveries**
- **Assays pending** for 9 holes, including J-21-020 which intersected trace **visible gold**

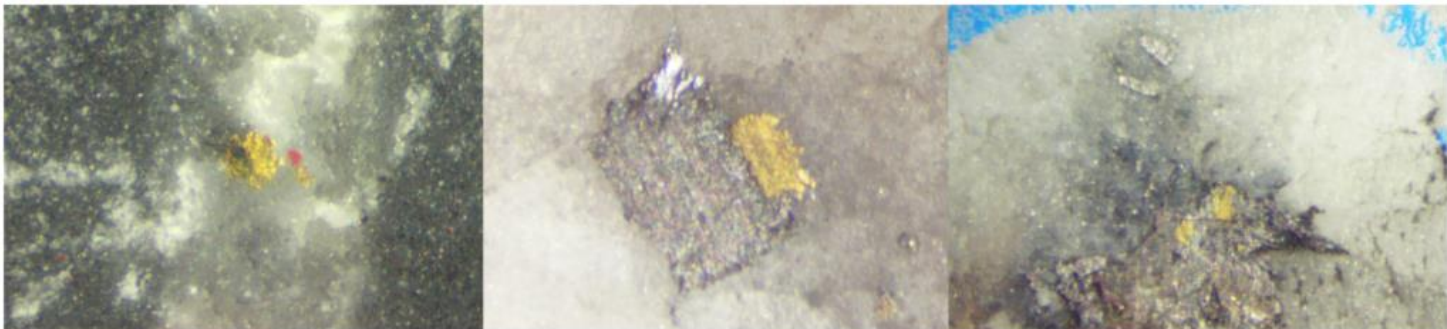
EINARSON – JUPITER DISCOVERY



Quartz vein in J-21-015 (assays pending)

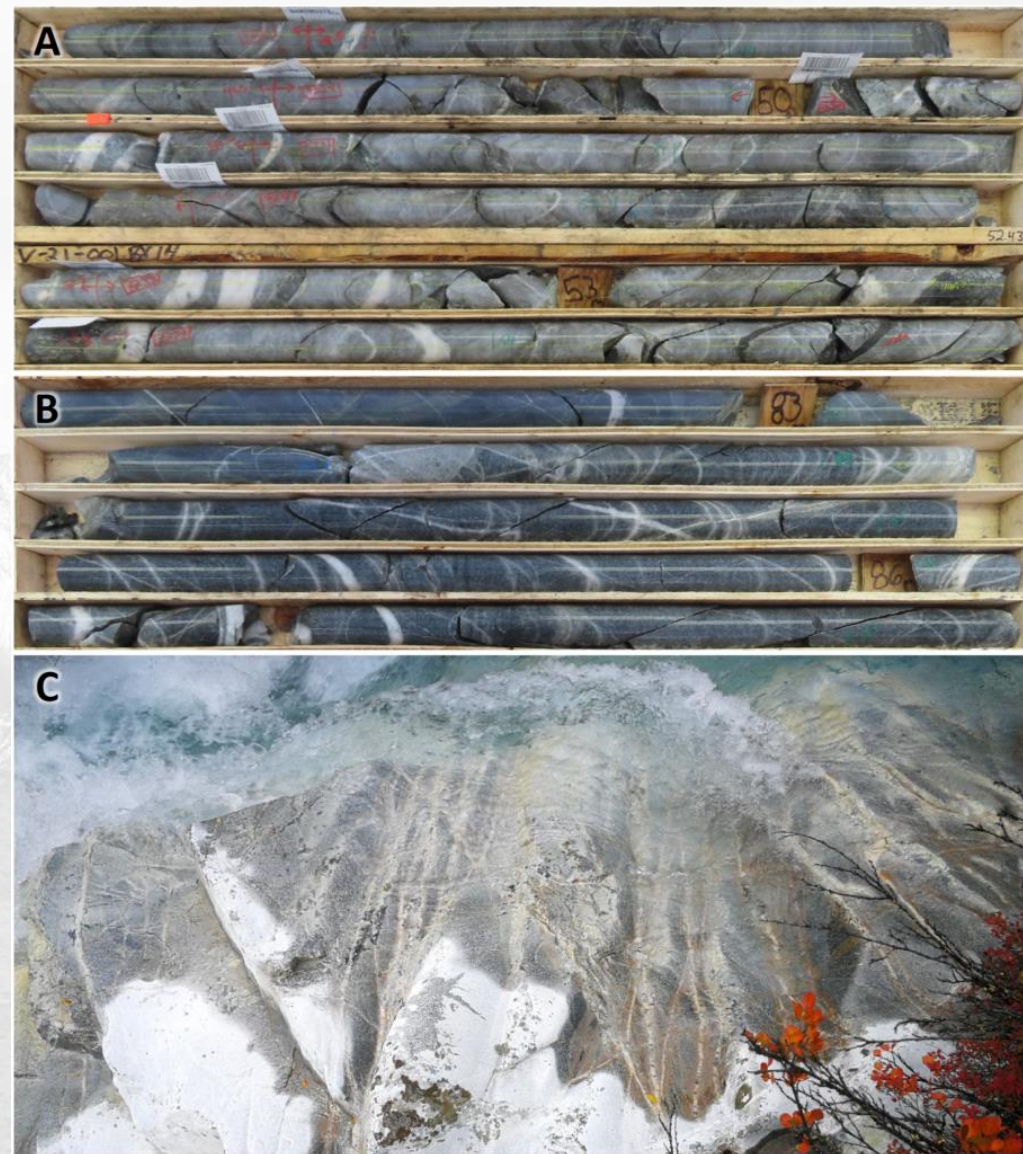
- **Multiple mineralized zones** along individual drill holes
- Gold found in **quartz veins** and disseminated through large zones of **altered wall rock**
- **Blind target:** all holes somewhat random tests of system

ROGUE - VALLEY DISCOVERY

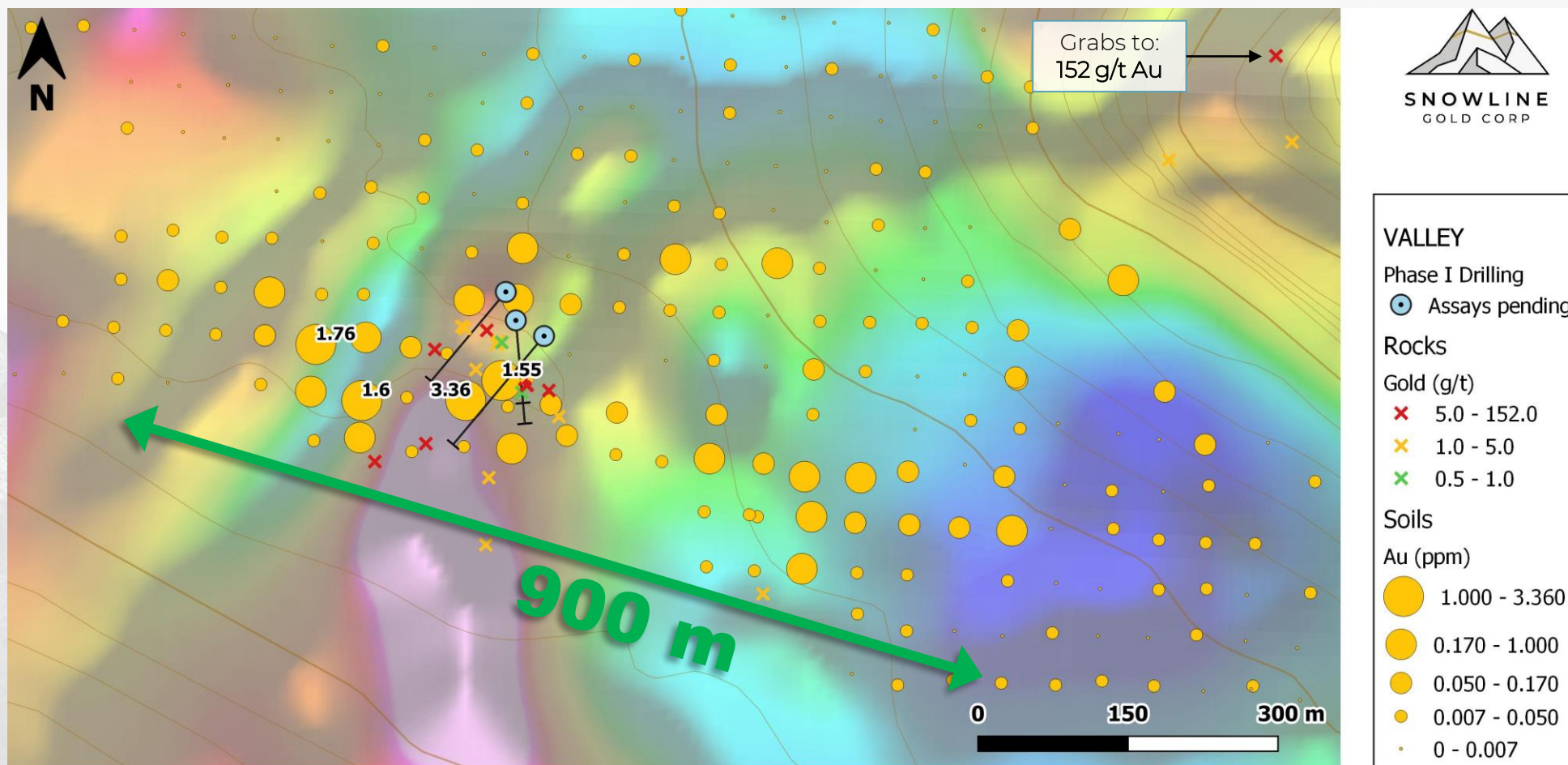


Instances of visible gold from V-21-001

- **Visible gold** mineralization in **4 of 4 holes**
- Hole V-21-001: **31 instances of visible gold** spread across length of hole (from 7 m to 159 m downhole in 161 m hole)
- Bulk tonnage target with extensive **sheeted veins**
- Setting and style comparable to multi-million ounce deposits, including **Ft Knox (Kinross)** and **Eagle (Victoria Gold)**
- **Assays pending** on all 4 holes



ROGUE - VALLEY DISCOVERY

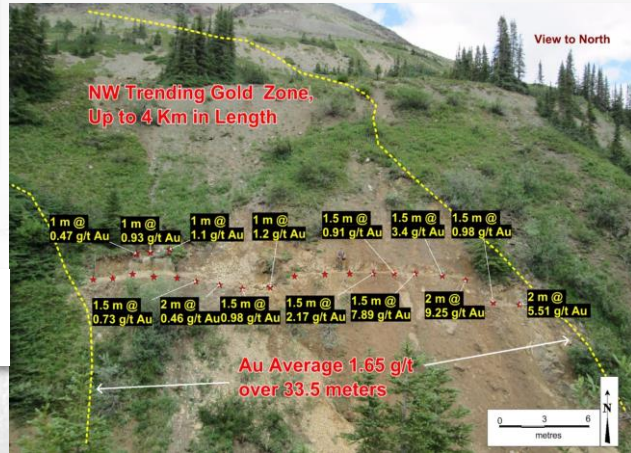


- Sheeted veins cross boundary of Mayo-suite intrusion (dark blue in background magnetics)

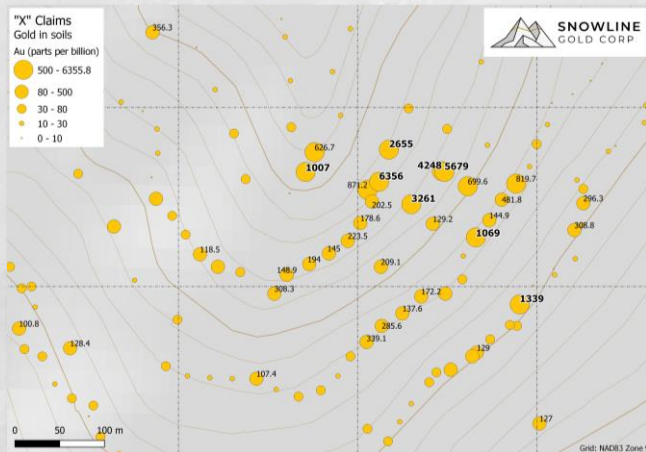
OTHER TARGETS



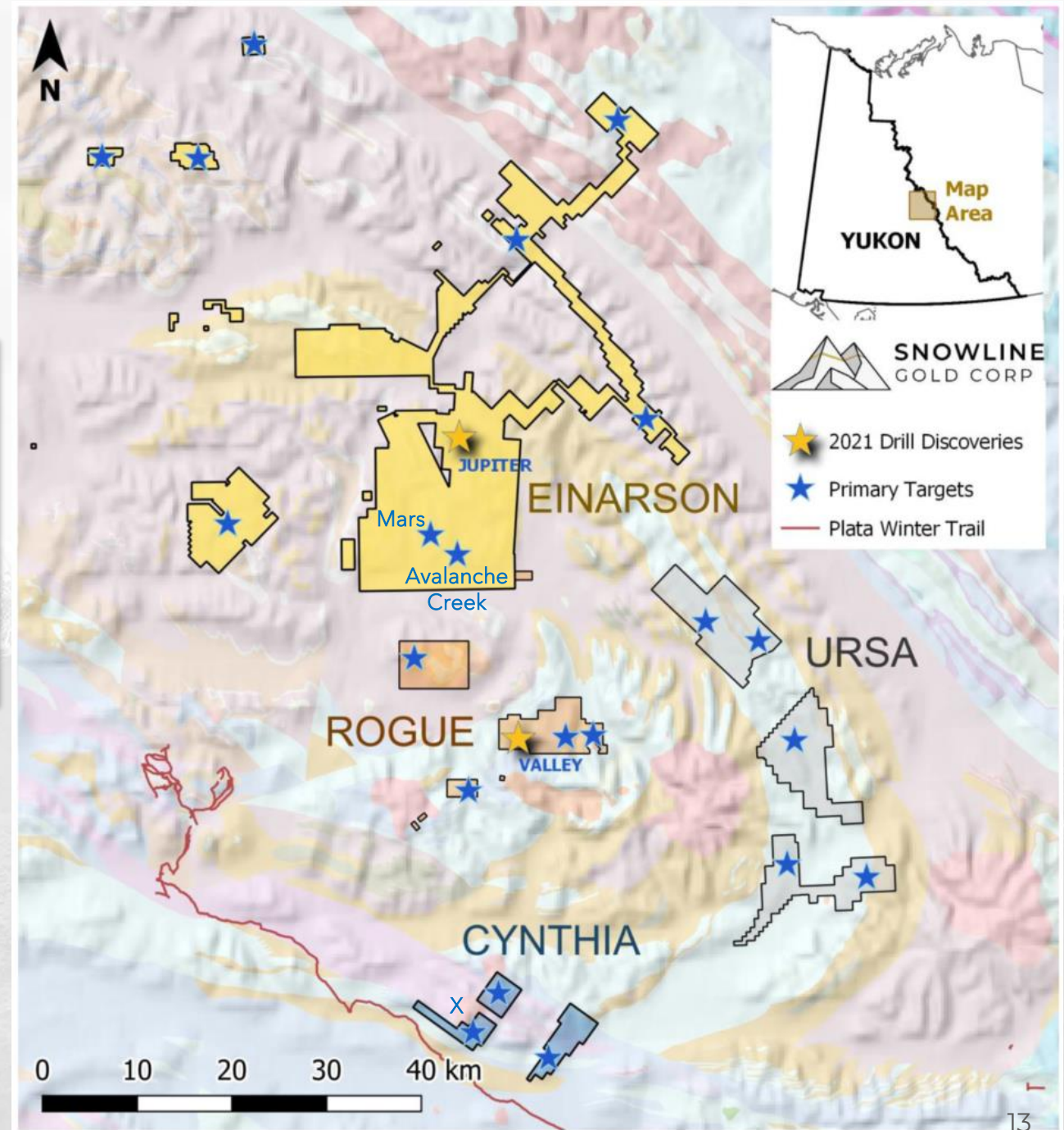
Avalanche Creek: 1 km float train
to **34.2 g/t Au**



Mars: 4 km anomaly, historical
trench **7.1 g/t Au over 5.0 m**

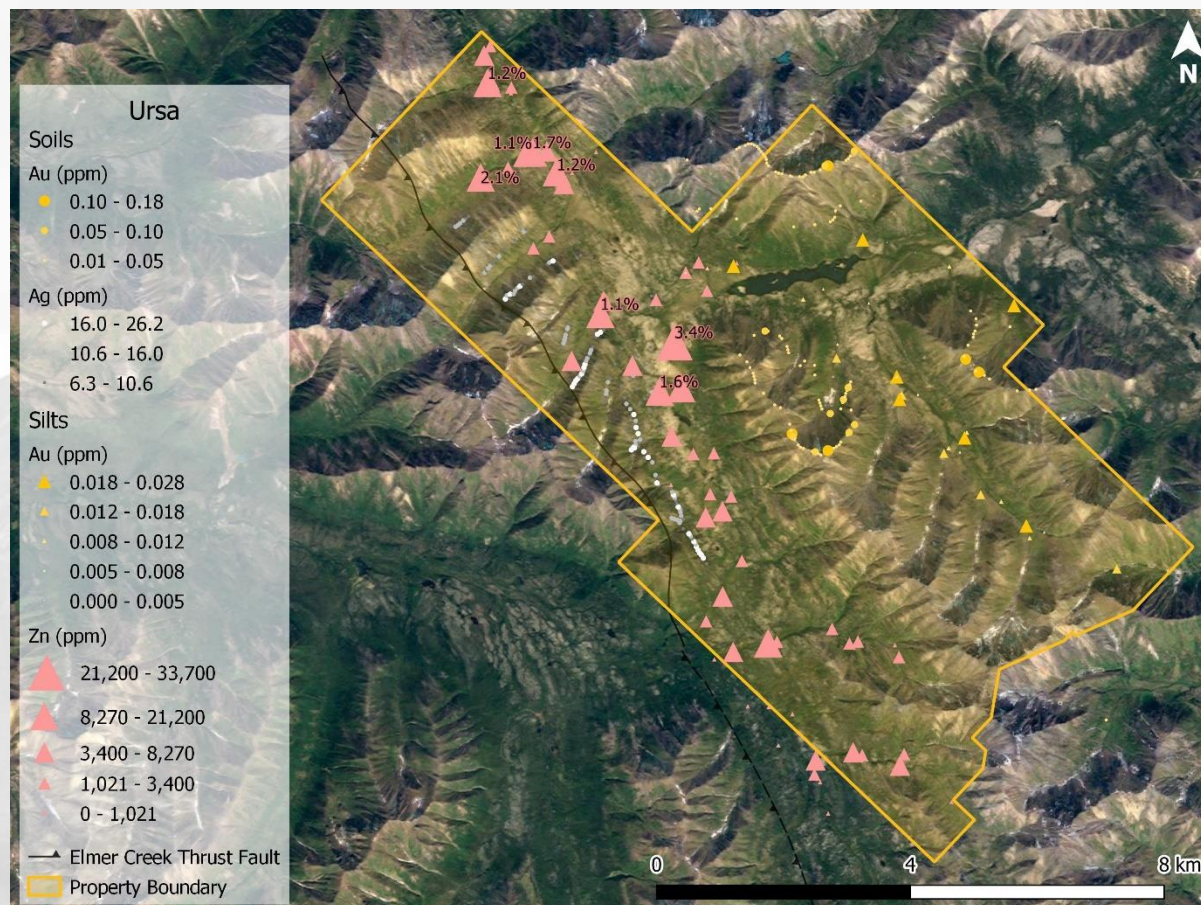


X: 350 by 250 m anomaly
core with **soils to 6.4 g/t Au**



OTHER GOLD ASSETS

URSA



Dr. Craig Hart, Snowline Chair

Gold Target

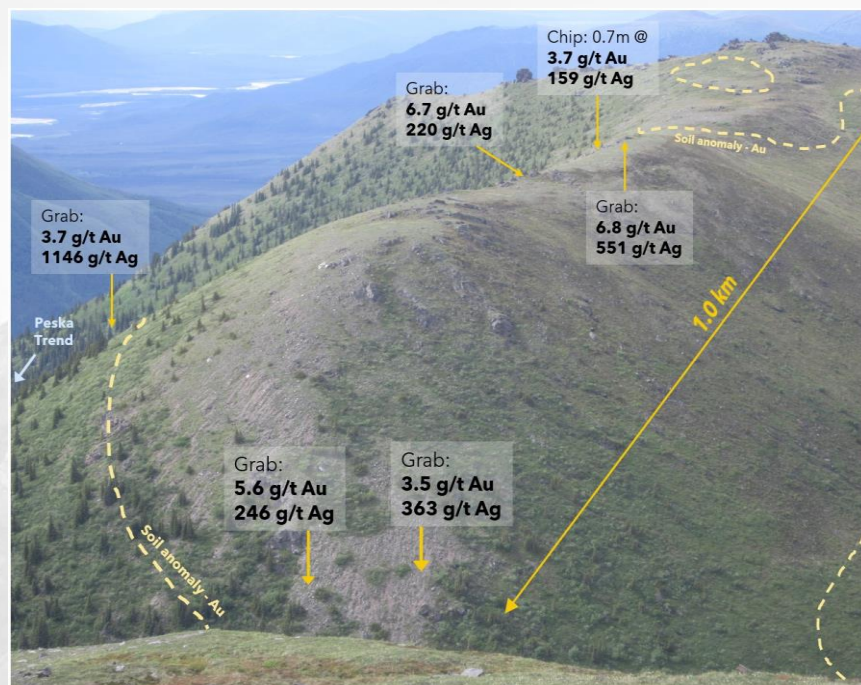
- **9-kilometer trend** of elevated gold in heavily folded carbonaceous black shales and cherts.
- Geological setting is similar to Russia's **Sukhoi Log** deposit (67 Moz Au at 1.9 g/t*)

Silver and Base Metals Target

- **14-kilometer trend** of highly anomalous **zinc, silver, copper, molybdenum, nickel and vanadium**
- **2.7-kilometer** subsection has a median soil concentration of **14.8 g/t (0.43 oz/ton) silver**.

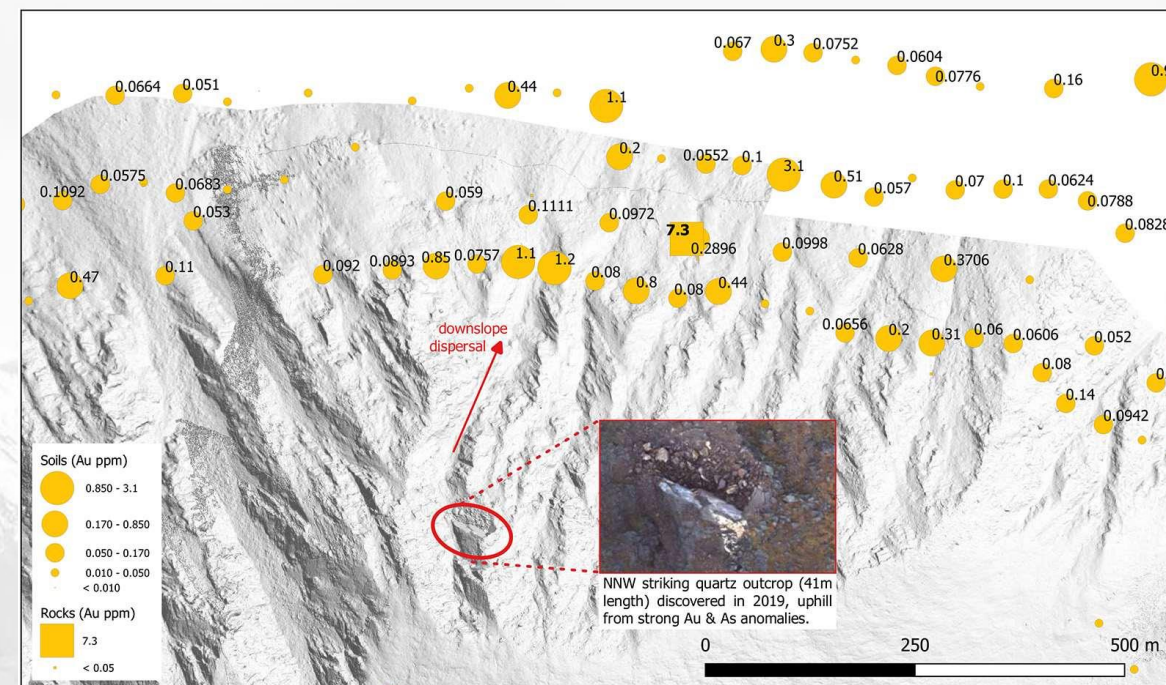
OTHER GOLD ASSETS

TOSH



- Hosted in **same stratigraphy, similar structural setting & spatial relationship** to evolved intrusive units as **Coffee deposit** (Newmont Goldcorp, 4 Moz Au*) 115 km north
- Mineralized rock samples up to **6.8 g/t gold** and up to **1,146 g/t silver** over a **15 kilometre** area

CLIFF



- Property geology analogous to the **Juneau Gold belt** which hosts 7,000,000 oz Au of historical production
- Geochemical sampling identified **1.6 kilometre by 300 metre** soil and talus fine anomaly grading to **3.1 g/t Au**

OWNERSHIP

Shares Outstanding	93.0 M
Held by the Berdahl Family	27.5 M
Options <i>Strike Price: \$0.30</i>	4.7 M
Options <i>Strike Price: \$0.35</i>	0.7 M
Warrants <i>Strike Price: \$0.50</i>	10.3 M
Warrants <i>Strike Price: \$0.53</i>	1.4 M
Market Capitalization <i>As of November 4, 2021</i>	\$55.3 M
Fully Diluted	110.1 M

- Significant shareholders:

Keith Neumeyer

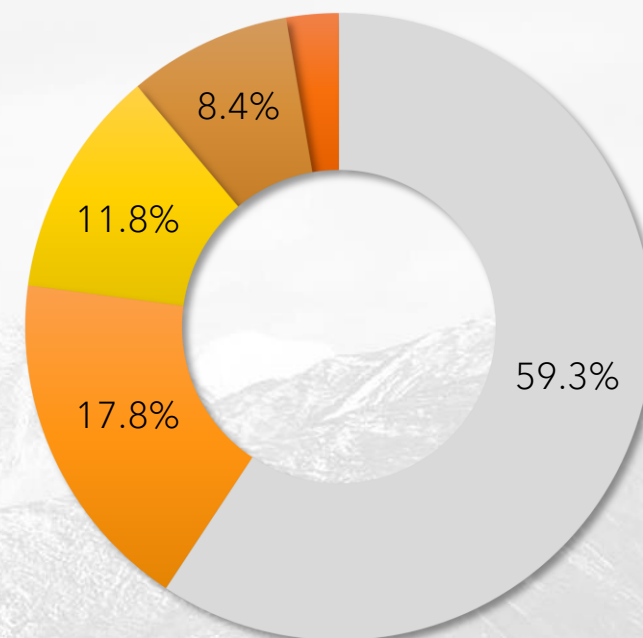
Palisades

Eric Sprott

Quinton Hennigh

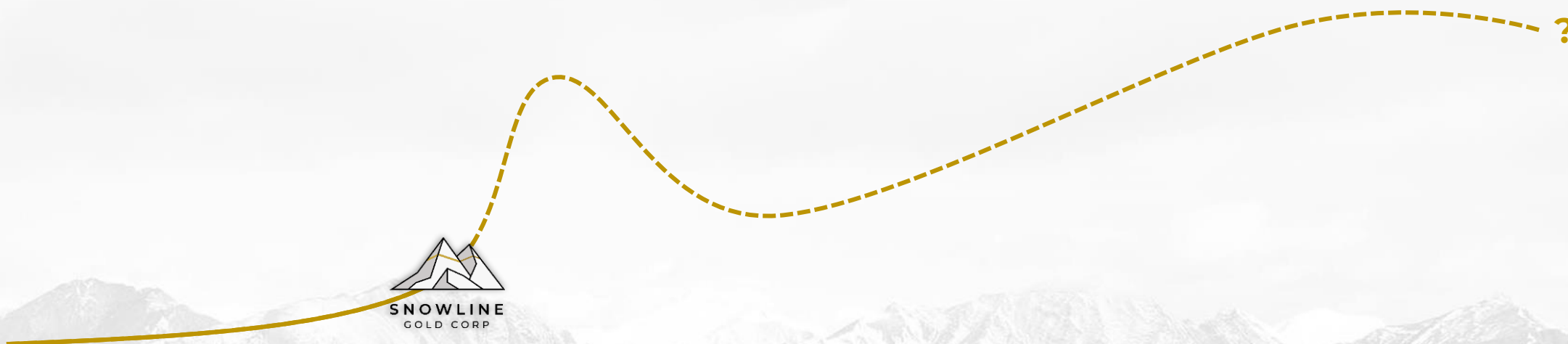


Snowline Gold Corp.



- Management
- Crescat Capital
- Institution & Retail
- Other insiders
- Eric Sprott

THE ROAD AHEAD



- Snowline poised at the **steepest value-add** phase (discovery) of the “Lassonde curve”
- **Near-term catalysts** include:
 - Forthcoming assays (**13 of 25 holes pending**, including **all 5 holes with visible gold**)
 - Ongoing district consolidation
 - Growing recognition of Snowline and our discoveries
- Plans underway for **follow-up drilling** at Jupiter, Valley and other key targets

THANK YOU



SNOWLINE GOLD CORP.

200-550 Denman Street
Vancouver BC, V6G 3H1

Contact Us

info@snowlinegold.com
www.snowlinegold.com

Follow Us:



Investor Presentation

CSE: SGD | OTCQB: SNWGF