



**AZTEC
MINERALS**
corp.

ELEPHANT HUNTING IN NORTH AMERICA

**Porphyry Gold-Copper Discovery in Sonora, Mexico
CRD Silver-Lead-Zinc-Gold Potential in Arizona, USA**

AZT: TSXV, AZZTF: OTCQB

OCTOBER 2021

Cautionary Statement

This presentation may contain forward-looking statements, including statements regarding future corporate plans and objectives, including exploration activities, results and interpretation and financial objectives, plans and activities of Aztec Minerals Corp. (“Aztec” or the “Company”). These statements are forward-looking statements that involve various risks and uncertainties. Any statements that express or involve discussions with respect to predictions, expectations, beliefs, plans, projections, objectives, assumptions or future events or performance (often, but not always, using words or phrases such as “expects” or does not expect”, “is expected”, “anticipates” or “does not anticipate”, “plans”, “estimates” or “intends” or stating that certain actions, events or results “ may”, “could”, “would”, “might” or “will” be taken, occur or be achieved) are not statements of historical fact and may be “forward-looking statements”. Forward-looking statements are subject to a variety of risks and uncertainties which could cause actual events or results to materially differ from those reflected in the forward-looking statements. Important factors that could differ materially from the Company’s expectations include, among others, risks related to exploration permitting, activities and results, metals prices, currency prices, international operations, community and government relations, land access, economic evaluations, project assumptions, funding for mineral exploration and development, unanticipated changes in key management personnel and general economic and market conditions. When relying on forward-looking statements to make decisions, investors and others should carefully consider the foregoing factors and other uncertainties and should not place undue reliance on such forward-looking statements. The Company does not undertake to update any forward-looking statements, oral or written, made by itself or on its behalf, except as required by applicable law. Accordingly, readers should not place undue reliance on forward-looking statements. This presentation includes disclosure of scientific and technical information with respect to Aztec’s exploration projects. Aztec’s disclosure of technical information is governed by National Instrument 43-101 – *Standards of Disclosure for Mineral Projects* (“NI 43-101”). The scientific and technical information contained in this presentation has been reviewed and approved by Allen David Heyl, CPG, a Qualified Person as defined by NI 43-101. Certain information in this presentation is derived from a technical report titled “Geology and Exploration of the Cervantes Project, Municipality of Soyopa, Sonora State, Mexico”, dated January 11, 2017. A copy of the report is available on the SEDAR website under Aztec’s profile at www.sedar.com.

Corporate Overview

Focused on Discovery

- Aztec Minerals Corp. (AZT: TSXV) (AZZTF: OTCQB) is a mineral exploration company focused on the discovery of large gold and silver poly-metallic mineral deposits in North America

Experienced Management and Board

- Experienced management and board have a proven track record of creating value through discovery, development and production

Elephant Hunting in Mining Friendly Jurisdictions

- Cervantes Porphyry gold-copper property in Sonora, Mexico (*Operator of 65:35 JV with Kootenay Silver*)
- Tombstone Epithermal gold-silver & CRD silver-lead-zinc-copper-gold project in Arizona, USA (*Operator of 75:25 JV with Tombstone Partners*)

Drilling Shallow Broad Epithermal Gold-Silver Zones at Tombstone, Arizona

- 2021 RC drill program testing shallow, bulk tonnage and high grade epithermal gold-silver mineralization along 830 m length of the Contention pit
- Recently drill highlights include 5.71 gpt gold and 40.5 gpt silver (6.282 gpt AuEq) over 32.0 m and 2.44 gpt gold and 66.56 gpt silver (3.39 gpt AuEq) over 65.5 m

Recent Gold Discovery at Cervantes, Sonora

- Virgin gold-copper porphyry discovery at Cervantes, 14 holes in 2018 Phase 1 drill program intersected oxide porphyry-type mineralization up to 0.77 gpt gold over 160 m width
- Recently completed 2021 Phase 1 exploration program, planning substantial Phase 2 RC drill program

Investor Highlights

Why Elephant Hunting?

- Major mining companies need large ore deposits to sustain their business, but they rely more and more on M&A rather than exploration to replace reserves
- Junior companies now dominate the exploration sector and have expertise in making new discoveries
- Major companies pay premiums to acquire successful junior exploration companies, creating maximum shareholder value

Why North America?

- Best mining jurisdiction in the world for its combination of low political risk, rule of law, reasonable tax regime, well developed infrastructure, strong discovery potential

Why Aztec Minerals?

- Management and Board have proven track record in creating shareholder value
- Attractive valuation: CAD\$17.9 million market cap, 34% closely held
- Two highly prospective projects with elephant potential in Sonora and Arizona
- Currently drilling open pit heap leach oxide epithermal gold-silver mineralization at Tombstone
- Tombstone also has underground sulfide CRD silver-lead-zinc-copper-gold potential
- Recent porphyry gold-copper discovery at Cervantes, wide-open for expansion

Why Now?

- Precious metal and base metals cycles now underway, majors are hungry for deals

Project Locations

Tombstone JV - SE Arizona

100 km southeast of Tucson

Heart of world class porphyry copper district

65 km northeast of massive Taylor zinc-lead-copper-silver-
'CRD' discovery

Cervantes JV – Sonora Mexico

160 km east of Hermosillo

60 km west of Alamos Gold's
Mulatos Gold Mine

50 km west of Agnico Eagle's La
India Gold Mine



Tombstone - Highlights

- **Aztec is operator** of 75:25 Tombstone JV with Tombstone Partners
- **Well located property**, patented land, road access, great infrastructure, historic mining town, full services including water and power
- **Historic silver district** that produced 32 million oz from 1878-1939 from CRD deposits and high grade, oxidized, silver-gold-lead-zinc-copper veins
- **2020 and 2021 RC drill programs** intersected extensive gold-silver mineralization along 900m length of the North-trending Contention Pit
- **Contention underground workings** mined high grade gold-silver veins in the late 1800's-early 1900's
- **Contention open pit** mined epithermal gold-silver mineralization in a heap leach operation in the late 1980s
- **Multiple prospective** targets in Cretaceous and Paleozoic rocks related to major NW and NNE trending structures hosting porphyritic dikes crosscutting a caldera ring structure

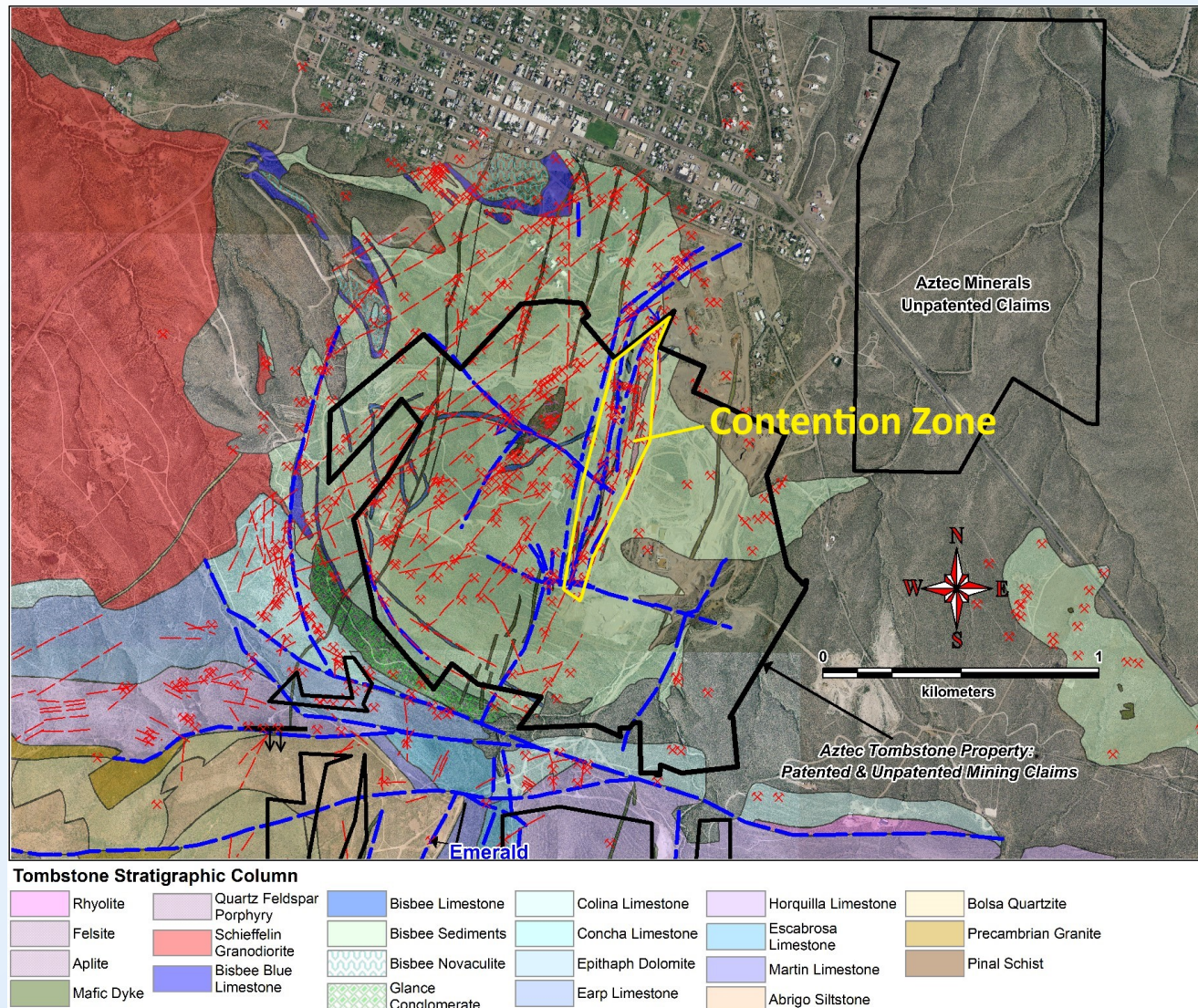


View of Contention pit, north half, looking NNE, epithermal mineralization remains in both walls and floor of pit



Tombstone - Property, Geology, Mines

- Properties (black lines) cover many small historic silver mines (red symbols) along minor structures (red lines) and largest historic mine (Contention) on major structure (blue lines)
- Epithermal open pit heap leach oxide gold-silver potential lies within Bisbee Group sediments (light-green) around and below the Contention pit
- Taylor-type CRD underground sulfide silver-polymetallic potential lies beneath the Contention pit and Bisbee Sediments within Paleozoic limestones (blue, green, purple)



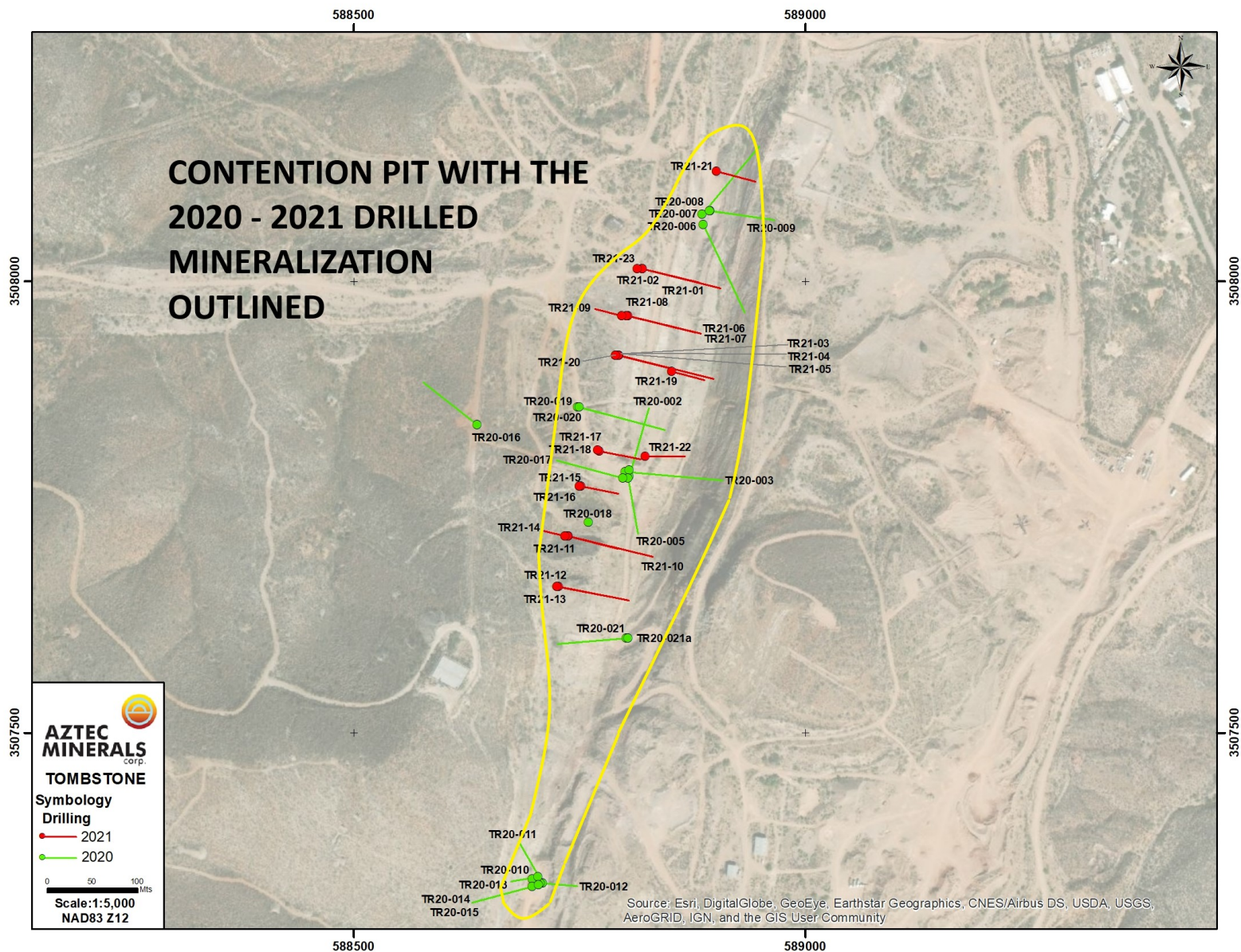
Tombstone - Open Pit Oxide Epithermal Potential

Drilling Confirms Extensive Shallow Oxidized Gold-Silver Mineralization Below Contention Pit

- **Typical Open Pit Heap Leach Mines** in Western USA run grades of 0.4-0.6 gpt gold, Tombstone 2020-2021 RC drill results are much higher grade in comparison
- **Contention Open Pit Heap Leach Mine** operated in the late 1980's at much lower precious metals prices, old reports indicate approximately 75% gold and 60% silver recovery with minor crushing
- **High Grade Grab Samples** indicate gold and silver mineralization remain in pit walls, grab samples grade up to **23.5 gpt Au** and **3,178 gpt Ag**
- **Aztec 2020 RC drilling** outlined bulk tonnage gold-silver mineralization along an **900 m length with widths up to 50 m down to 120 m deep** along the Contention pit, still open for expansion at depth.
- **Aztec 2021 RC drilling** is infilling the 2020 drilling and stepping out at depth to expand the shallow, broad, bulk tonnage gold-silver mineralization discovered around and below the Contention pit.



Tombstone - 2020-2021 RC Drill Plan Map



Tombstone - 2020 RC Drill Highlights

- **19 of 21 holes** drilled in three areas, the North, Central and South drill patterns, intersected widespread gold and silver mineralization, extending the mineralized zone along 830 meters of strike down to 100 meters depth below the Contention open pit.
- **Most drill holes** intersected old mine workings, dating back to the late 1800's, although the high-grade bonanza mineralization was previously mined, substantial lower grade mineralization was left behind

High Grade Gold-Silver Highlights

- TR20-09: **15.14meters of 6.18 gpt gold and 77.2 gpt silver (7.15 gpt AuEq)** from 32.0m
- TR20-02: **13.72 meters of 3.18 gpt gold and 136 gpt silver (4.88 gpt AuEq)** over 13.7m

Bulk Tonnage Gold-Silver Highlights

- TR20-02: **77.72 meters of 0.94 gpt gold and 42.1 gpt silver (1.60 gpt AuEq)** from 19.8m
- TR20-03: **97.53 meters of 0.77 gpt gold and 25.2gpt silver (1.07 gpt AuEq)** from 6.1m



Tombstone - 2021 RC Drill Results

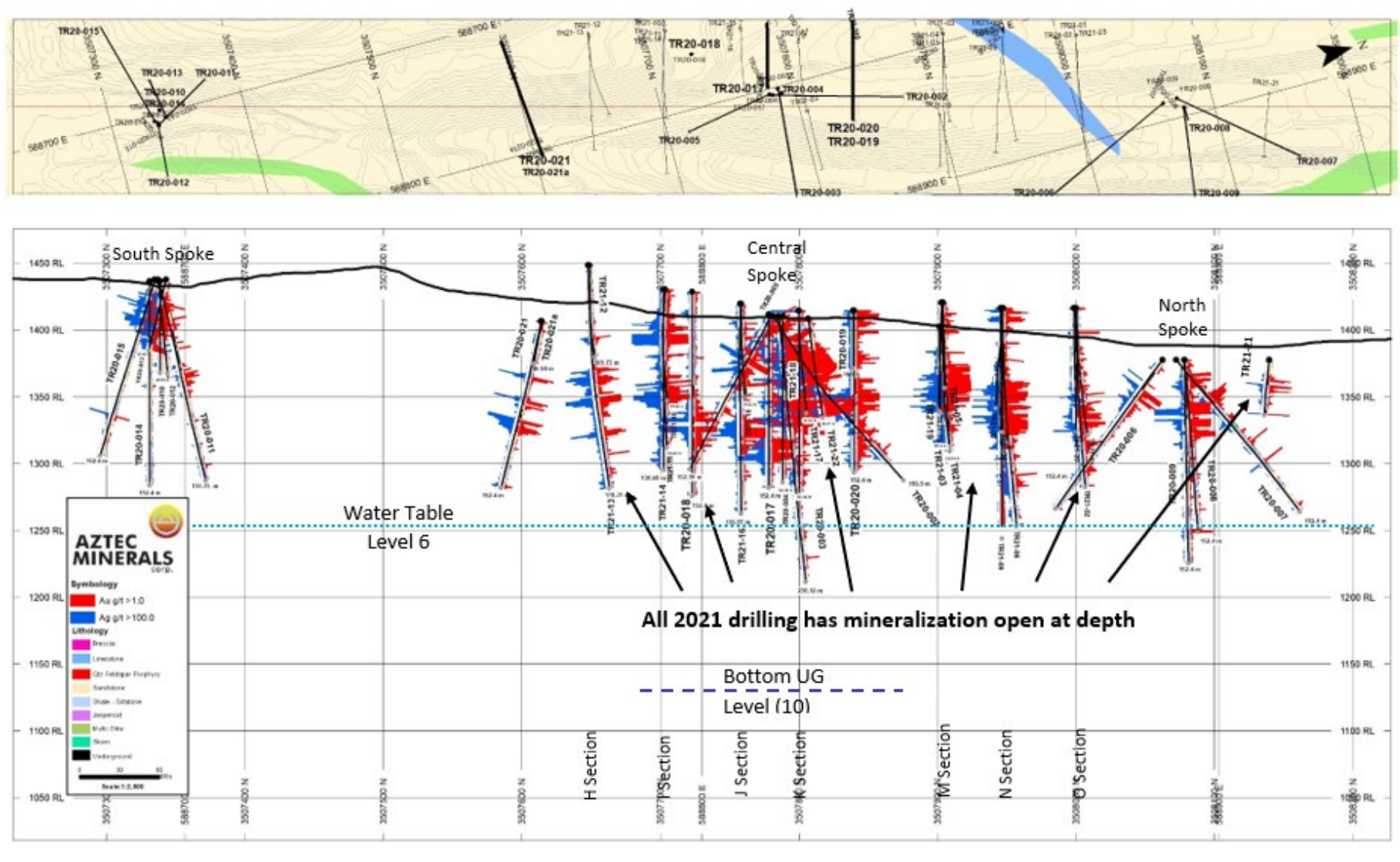
Steadily Expanding Bulk Tonnage and High-Grade Gold-Silver Mineralized Zones

- **Every hole** intersected near surface, oxidized gold-silver mineralization in steep and shallow, west dipping zones
- **All holes** bottomed in mineralization, still open for expansion

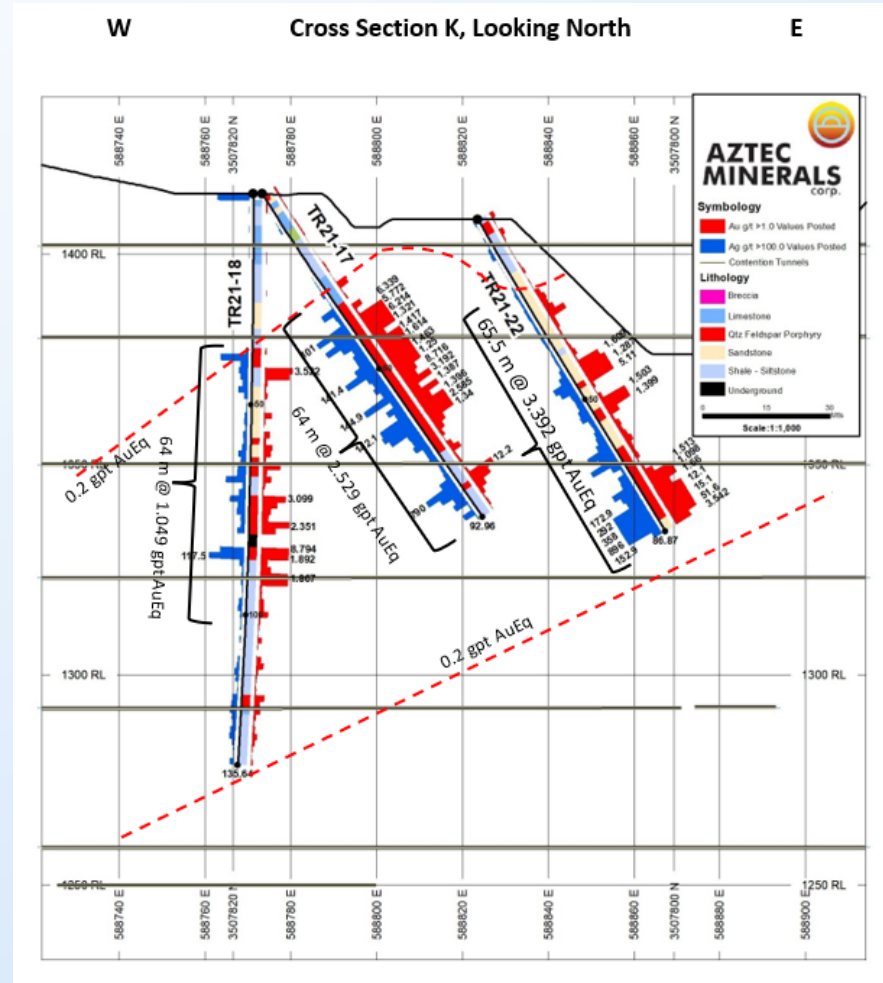
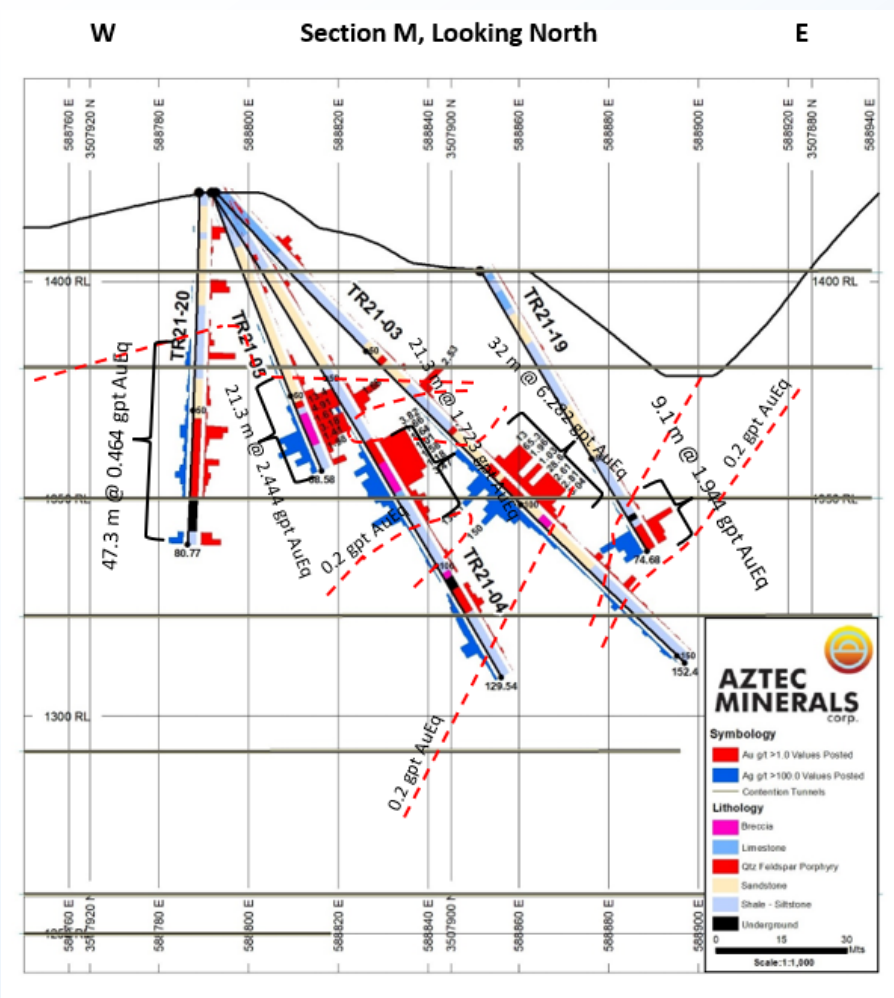
2021 Drilling Highlights:

- Hole TR21-22: 2.44 gpt Au and 66.56 gpt Ag **(3.39 gpt AuEq) over 65.5m**
 - Incl 16.80 gpt Au and 374.36 gpt Ag (22.15 gpt AuEq) over 7.6m
- Hole TR21-10: 1.39 gpt Au and 56.40 gpt Ag **(2.20 gpt AuEq) over 96.0m**
 - Incl 2.47 gpt Au and 28.9 gpt Ag (2.97gpt AuEq) over 39.6m
- Hole TR21-03: 5.71 gpt Au and 40.54 gpt Ag **(6.28 gpt AuEq) over 32.0m**
 - Incl 11.89 gpt Au and 62.9 gpt Ag (12.79 gpt AuEq) over 11.9m
- Hole TR21-13: 1.80 gpt Au and 36.90 gpt Ag **(2.33 gpt AuEq) over 70.1m**
- Hole TR21-17: 1.73 gpt Au and 56.20 gpt Ag **(2.53 gpt AuEq) over 64.0m**
- Hole TR21-08: 2.09 gpt Au and 47.1 gpt Ag **(2.76 gpt AuEq) over 39.6m**
 - bottomed in mineralization grading 1.21 gpt AuEq when ground caving forced early termination of the hole
- Hole TR21-18: 0.76 gpd Au and 20.61 gpt Ag **(1.05 gpt AuEq) over 64.0m**

Tombstone - Drill Long Section

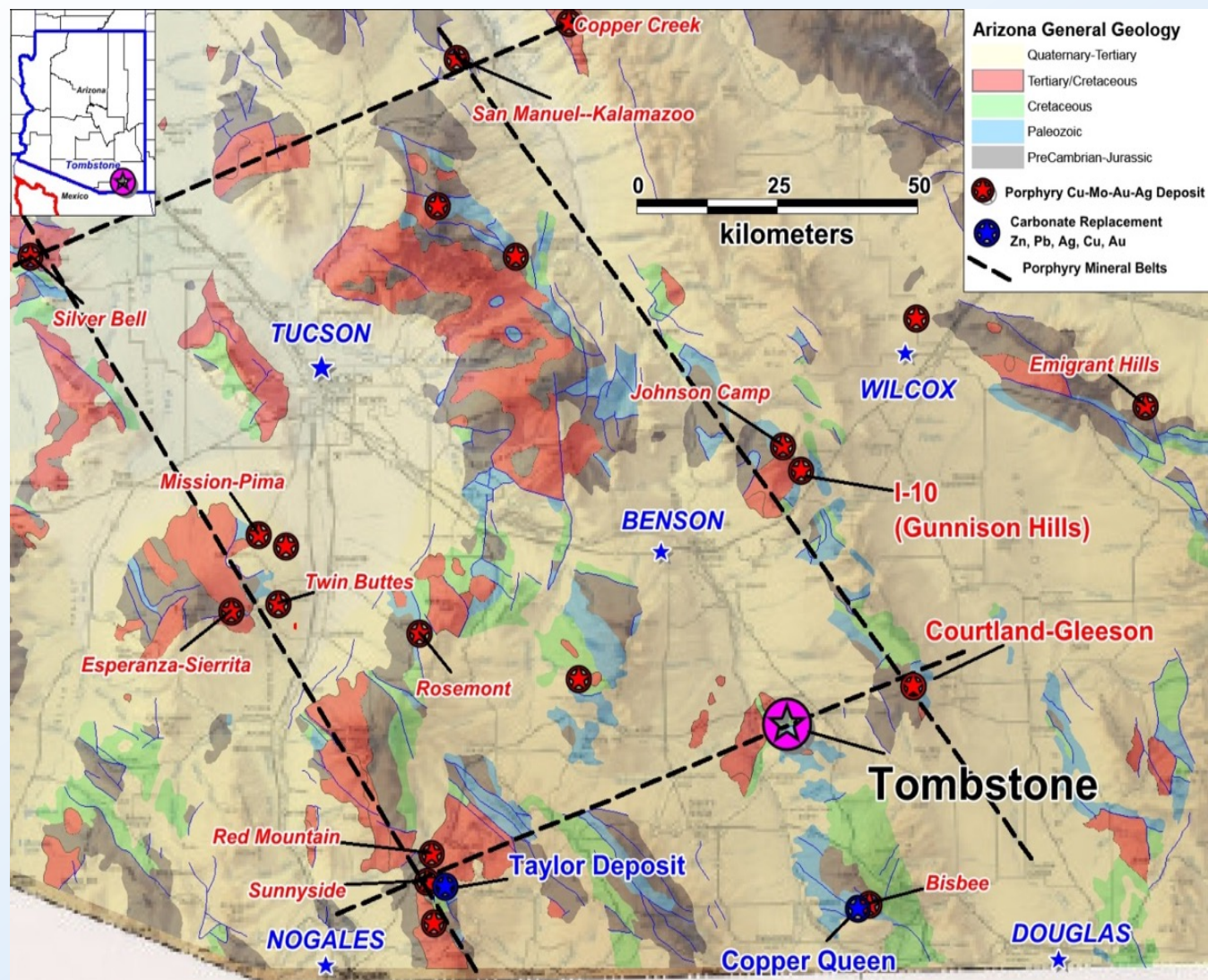


Tombstone - 2021 RC Drill Sections



Tombstone - Underground Sulfide CRD Potential

- Arizona Mining acquired the small, historic Hermosa Silver district, discovered the massive Taylor CRD deposit (100 million tonnes @ 10% ZnEq) below and beyond the shallow lead-zinc-silver veins, and attracted a \$1.8 billion take-over by South 32. Tombstone is the nearest historic silver district with similar potential to Hermosa and Taylor



Tombstone - CRD Discovery Model – Arizona Mining

Arizona Mining - News Timeline

- 1 **February 2015:** Insiders lend \$1.6 million to Company, Don Taylor appointed COO, resumes drilling
- 2 **May 2015:** Discovers new Hermosa NW sulfide mineralization
- 3 **February 2016:** Expands land position, acquires 100% interest in property, estimates large, new resource of 39.4 million tons @ 11% ZnEq
- 4 **October 2016:** Expands resource to 114 million ton @ 11% ZnEq
- 5 **April 2017:** First economic study, PEA estimates \$1.3 billion NAV, 42% IRR
- 6 **May 2017:** Raises \$110 million financing from South32
- 7 **January 2018:** Second economic study, PEA estimates 2.0 billion NAV, 48% IRR
- 8 **June 2018:** Accepts C\$1.8 all cash takeover offer (\$6.20 per share) from South32 Mining

Arizona Mining (TSX:AZ) shares went from \$0.25 per share pre-discovery (2015) to \$6.25 per share post-acquisition (2018)



Tombstone - Historic CRD Drill Intercepts

- Santa Fe drilled 7 core holes (4,803 m) in 1989, looking for porphyry, skarn, and CRD mineralization, mostly along the western property boundary
- 5 holes intersected deep, narrow, high grade silver-polymetallic CRD manto mineralization
- Hole T-8 tested the deep Contention structure and returned the best result, 32 gpt silver, 9.1% lead-zinc, 0.61% copper over 7.16 m
- Tombstone clearly has deep Taylor CRD potential!

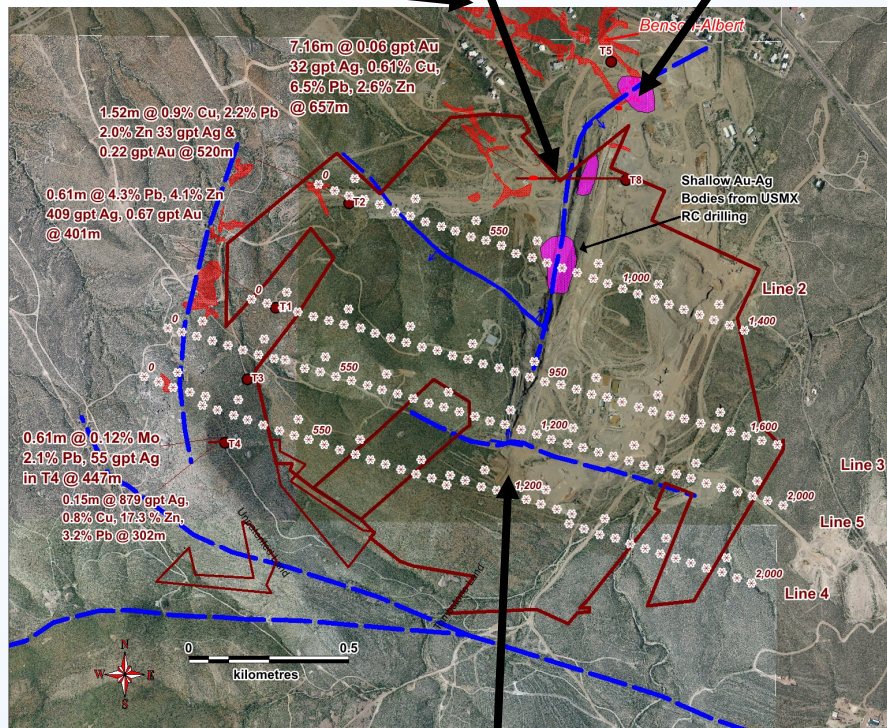
DDH	From_m	To_m	Int_m	Au_gpt	Ag_gpt	Cu_%	Pb_%	Zn_%	Comments	Formation
?	?	?	0.03	ND	53	2.12	10.4	5.4	"mini" manto, sulphide	Colina
T-1	398.7	399.3	0.61	0.67	409	0.05	4.3	4.1	Semi-massive manto	Epitaph
T-1	401.7	402.0	0.30	0.32	2407	0.03	0.8	1.1	Argentite possible	Epitaph
T-2	?	?	?	ND	380	0.38	ND	ND		
T-2	?	?	?	ND	37	1.04	5.0	4.0	Manto, semi-massive	Epitaph
T-2	520.3	521.8	1.52	0.22	33	0.89	2.2	2.0		Epitaph
T-4	402.3	403.3	0.91	0.14	917	0.09	1.3	1.6		
T-6	302.2	302.4	0.15	0.06	879	0.81	3.2	17.3	Sulphide manto, high Zn & Ag	
T-6	361.3	361.8	0.46	ND	93	ND	0.7	1.6	Sulphides and oxides	
T-6	529.7	530.4	0.61	ND	2.8	0.06	2.4	0.4	Oxides, near Lucky Cuss Fault	
T-8	502.5	503.4	0.91	ND	18	0.62	2.2	2.4	Sulphides, weak skarn, recrystallized LST	Horquilla
T-8	656.5	663.7	7.16	0.06	32	0.61	6.5	2.6	Skarn, oxidized	Escabrosa

Tombstone - NSAMT Lines and Plan, 600 m Deep

Deep polymetallic CRD mineralization drilled by Santa Fe

Shallow gold-silver mineralization drilled by USMX

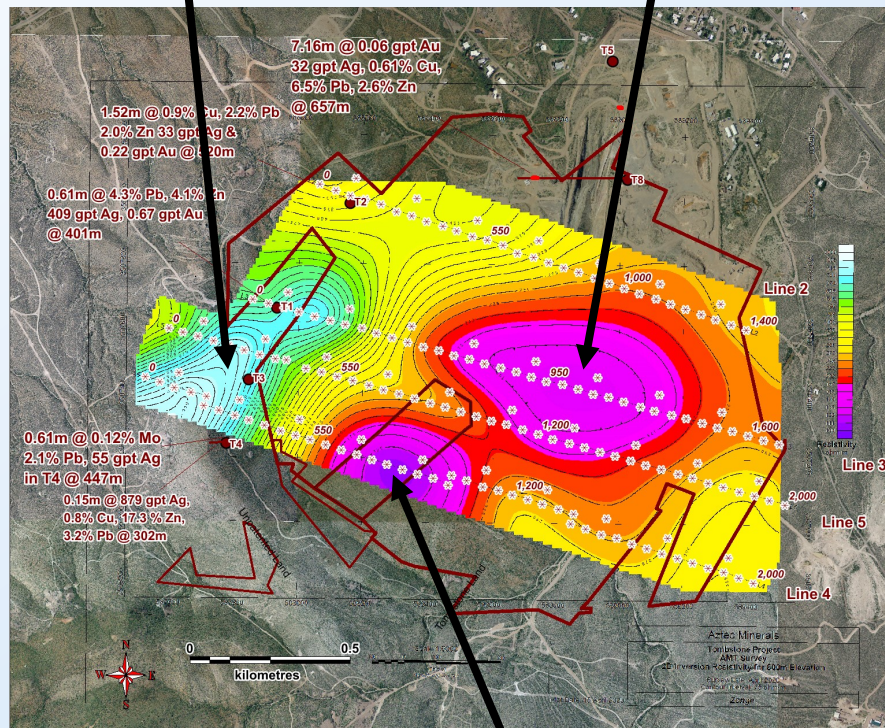
Old mine workings



Large scale structures

Strong Resistor
Interpreted to
Represent Granodiorite
Intrusive

Large Conductor below
Contention pit and Bisbee
Sediments in Paleozoic
Limestones

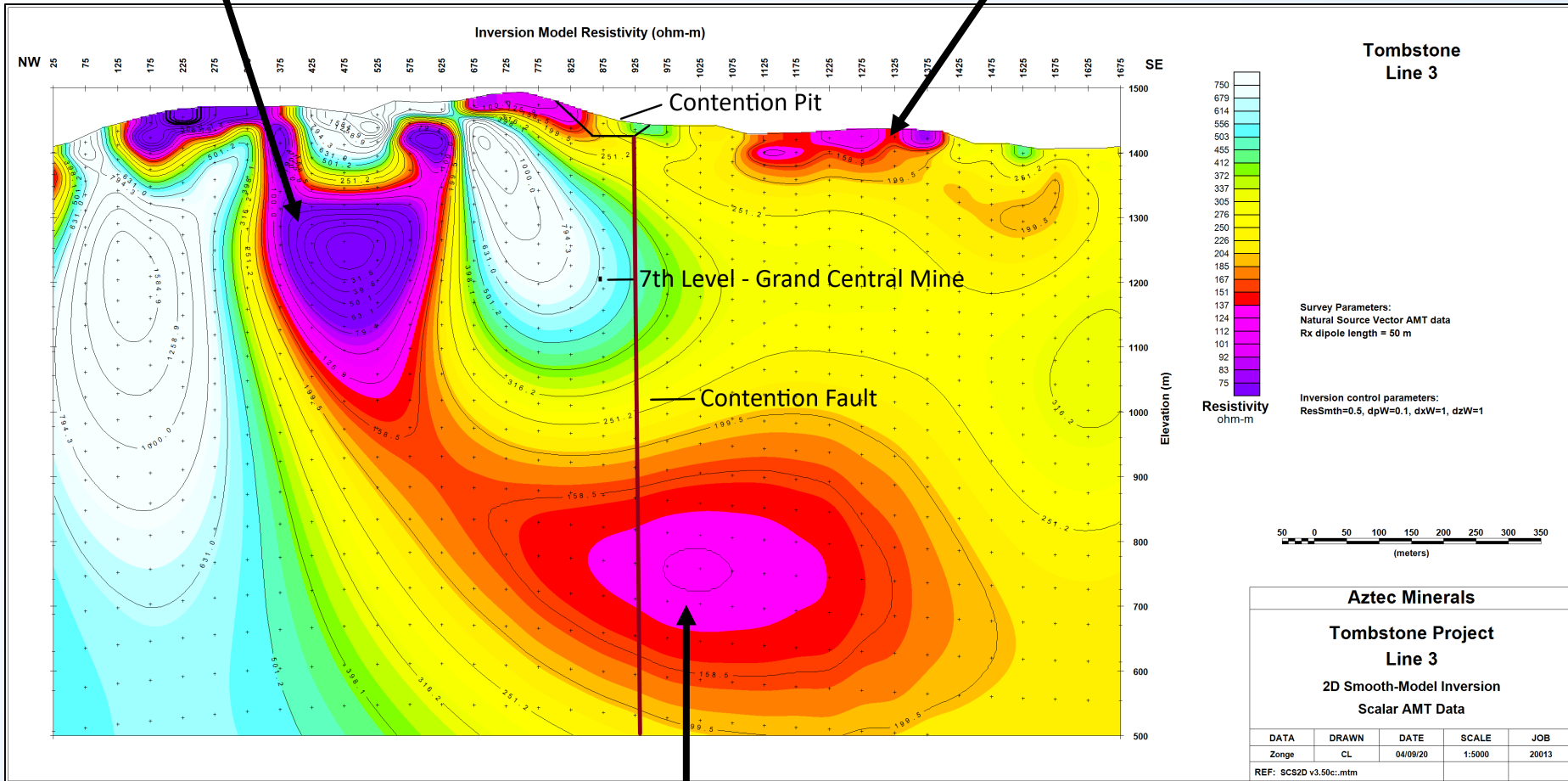


Smaller stronger
conductor west of
Contention Pit

Tombstone - NSAMT Line 3 Pseudo-Section

Strong conductor 200m below surface,
possibly buried, mineralized intrusion, skarn

Shallow Conductor, possible
cultural influence (eg. pipeline)



Moderate conductor 600m below surface,
possible CRD massive sulfides

Tombstone - Next Steps

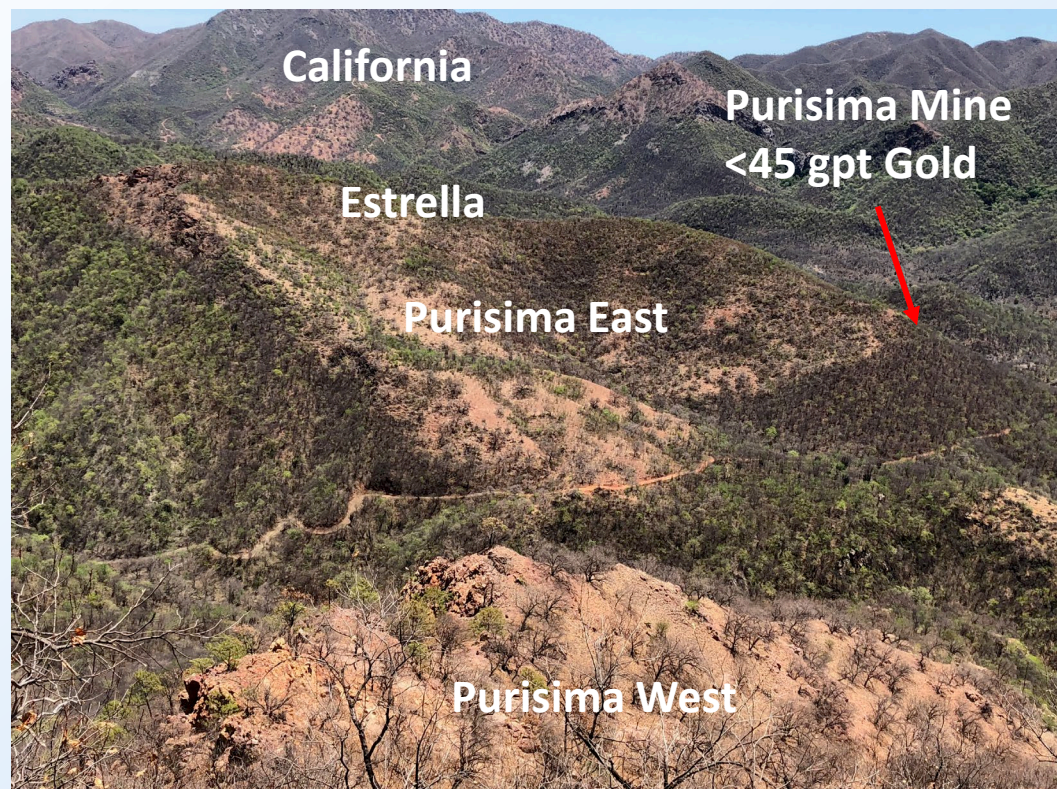
- **Phase 2 RC drill program underway**
targeting shallow epithermal oxide gold and silver mineralization below and around the Contention Pit
- **Phase 3 core drill program planned**
targeting deeper CRD sulfide silver-polymetallic mineralization below the Contention pit and Bisbee Sediments
- **NSAMT conductors 250 m to 1,000 m**
deep could represent Taylor-style massive sulphide replacement mantos in Paleozoic Limestones



View from west of Contention pit looking north towards town of Tombstone, old mine workings extend under much of the town

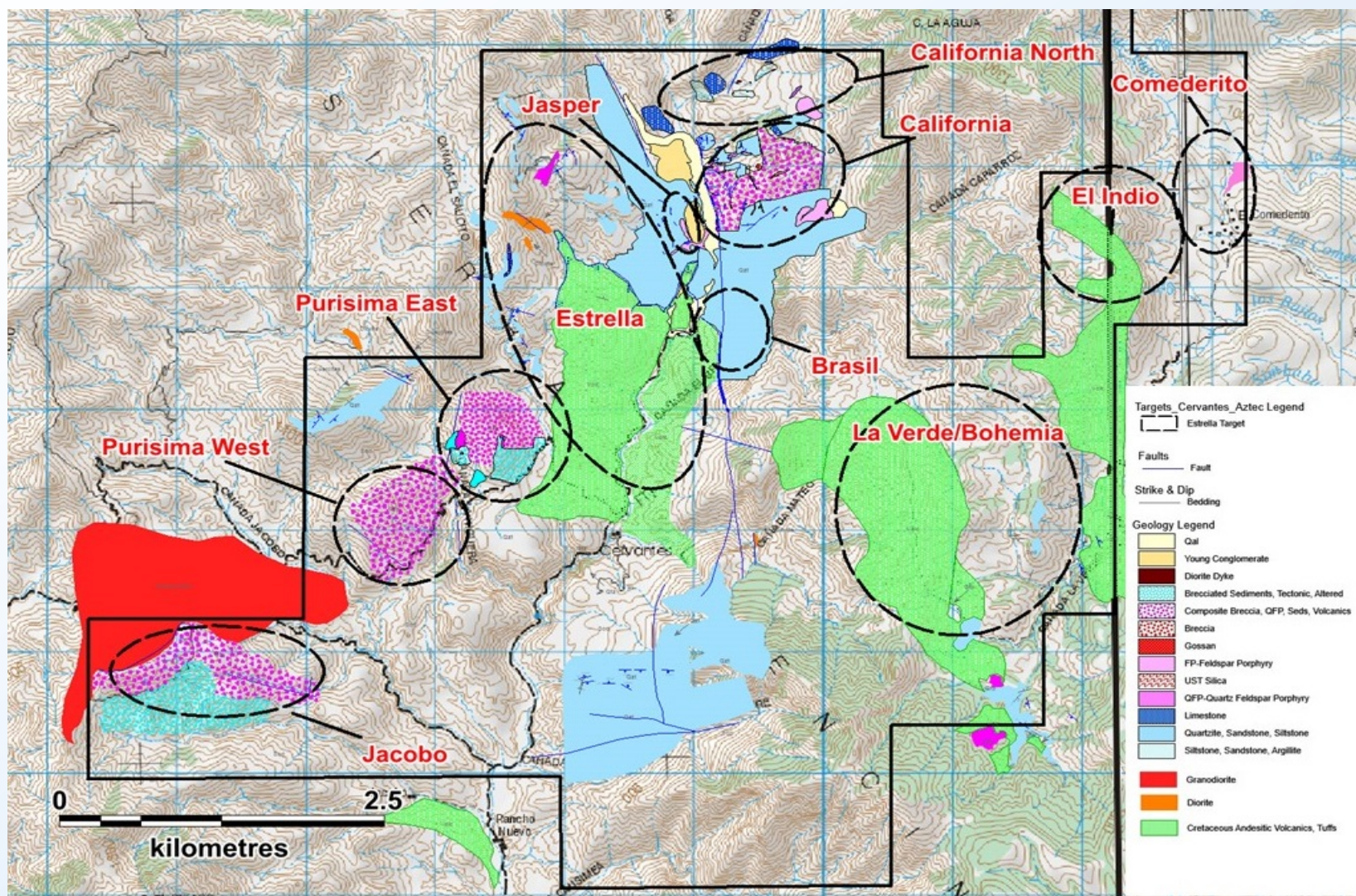
Cervantes - Highlights

- **Aztec Minerals is operator** of 65/35 Cervantes Joint Venture with Kootenay Silver (TSXV: KTN)
- **Large well-located property**, (3,649 hectares) good road access, private surface, water wells
- **Multiple prospective mineralized zones**, related to high level porphyries and breccias along 6.0 km corridor
- **Strong geochemical soil anomalies**, California target averages 0.44 gpt gold over 900m by 600m
- **Distinct geophysical anomalies**, California target has magnetic, radiometric, IP chargeability anomalies
- **Extensive gold mineralization** in outcrop at California target, channel samples <0.47 gpt gold over 222m
- **Compelling drill results**, 0.77 gpt gold over 160m hole length, 0.71 gpt gold over 139m, mineralization still open
- **Excellent gold leach recoveries** from metallurgical tests on California drill core, range from 75% to 87%
- **California target wide open** laterally and to depth, IP anomaly strengthens and broadens to 500m depth
- **Main gold-copper sulfide target** yet to be drilled, other prospects ready to drill

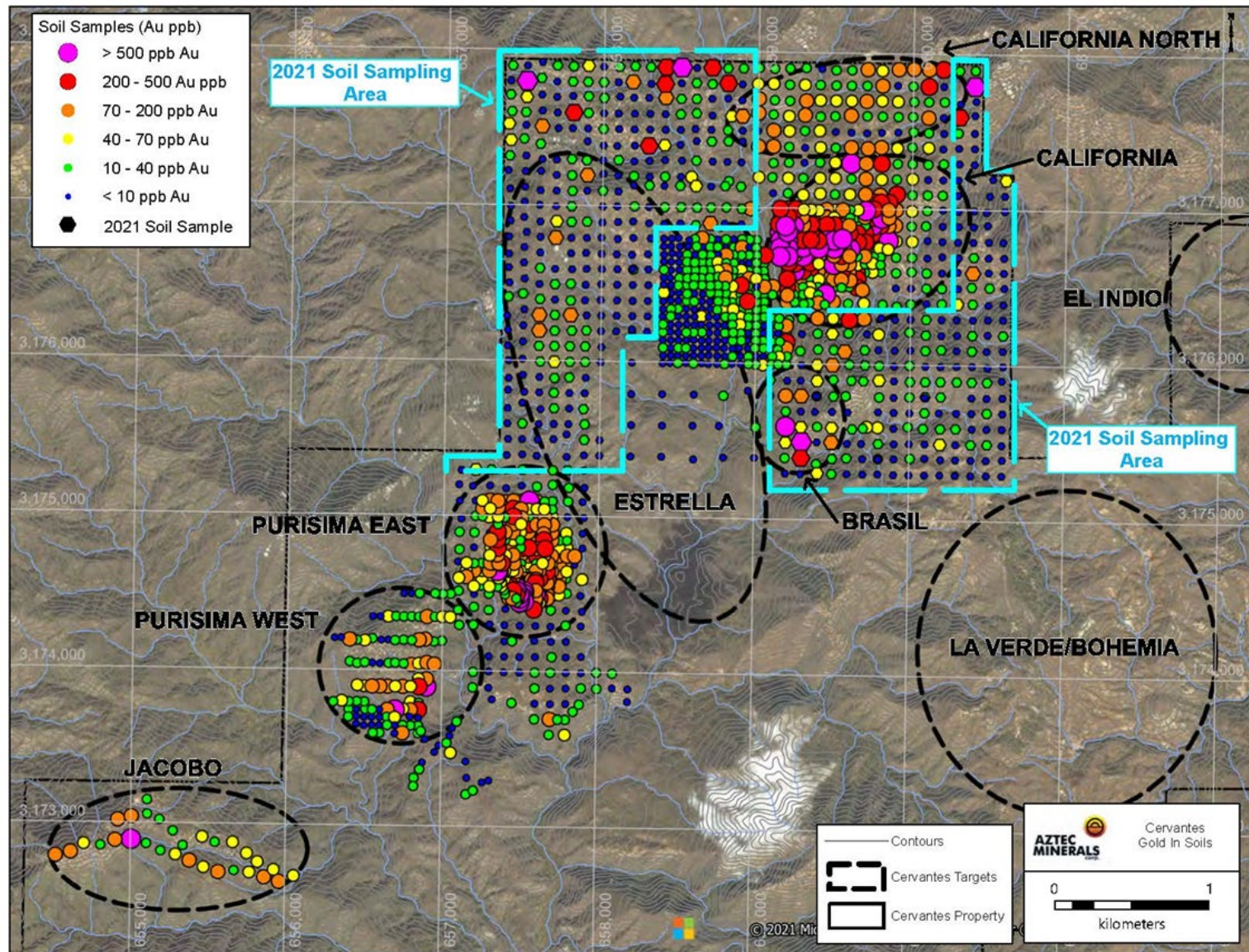


Looking NE over 4 key targets along a 5 km long mineralized trend, every bare hilltop is due to extensive porphyry alteration and mineralization

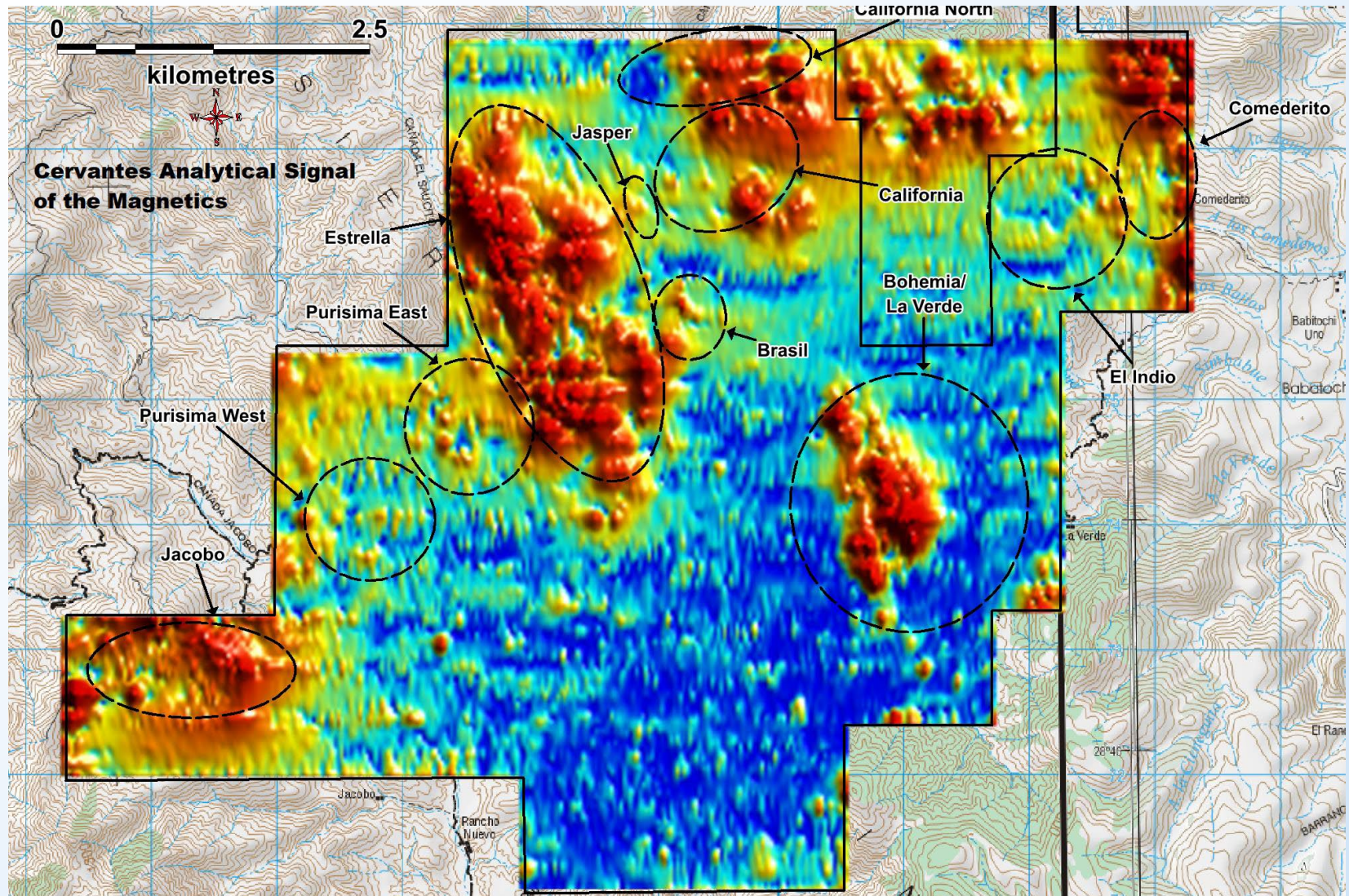
Cervantes - Property, Geology, Targets



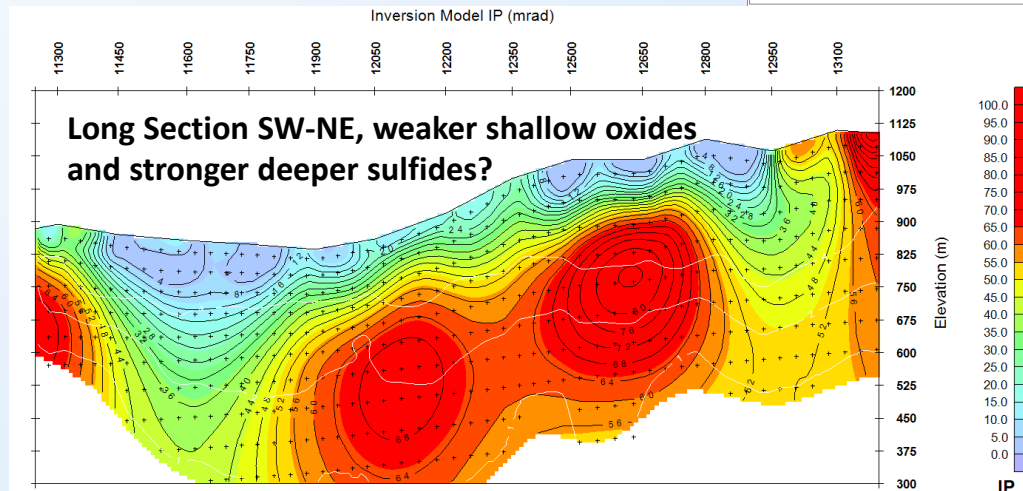
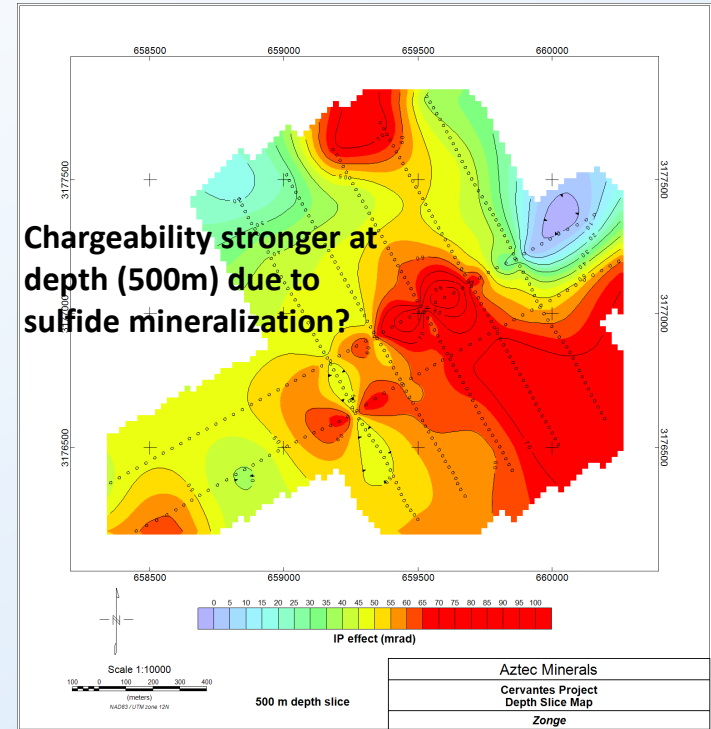
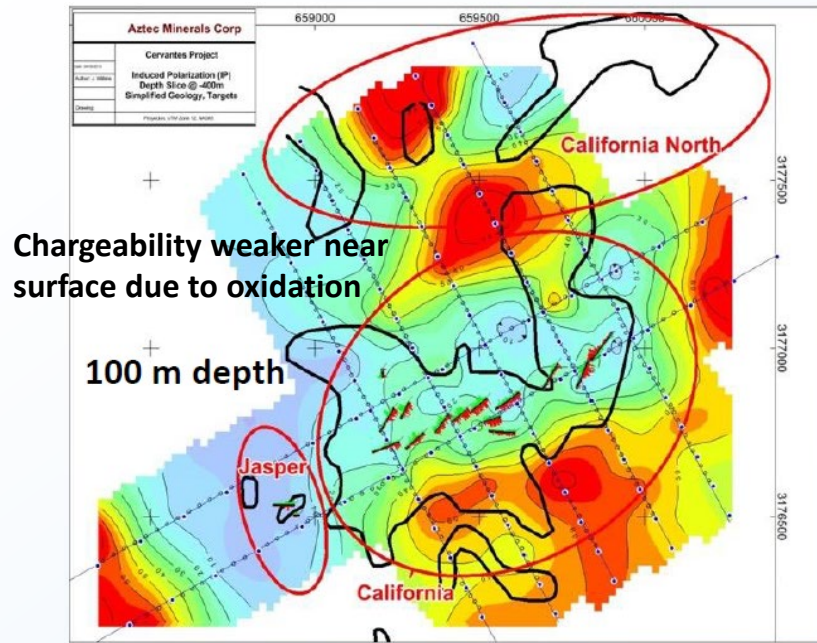
Cervantes - Gold Soil Geochemical Anomalies



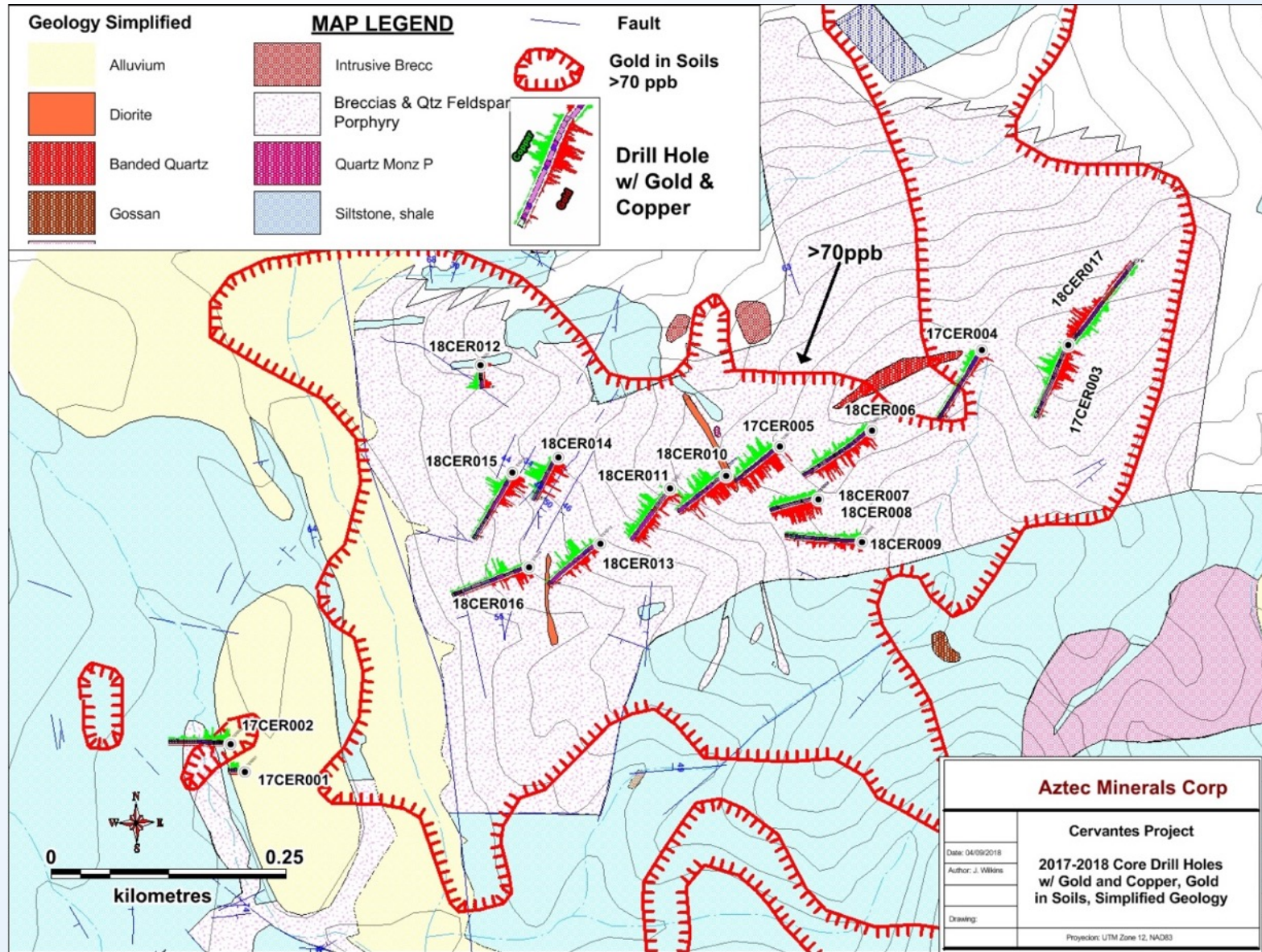
Cervantes – Aeromagnetic Geophysical Anomalies



Cervantes - California Zone IP Chargeability Anomalies



Cervantes - California Zone Geology and Drilling



Cervantes - California Zone Drill Results, Metallurgy

- Phase 1 drill program completed 2,674 metres in 17 core holes mainly at California target, tested surface oxide zone to 150m depth, still wide open laterally and at depth
- Long and consistent gold-bearing intervals from 14 drill holes, highlights as follows:
 - **160m @ 0.77 gpt gold incl 80m @ 1.04 gpt gold, 0.11% copper in 18CER010**
 - **139m @0.71 gpt gold incl 20m @ 2.1 gpt gold, 0.16% copper in 17CER005**
 - **118m @ 0.63 gpt gold incl 43m @ 1.18 gpt gold, 0.16% copper in 17CER003**
 - **122m @ 0.60 gpt gold incl 62m @ 0.88 gpt gold, 0.06% copper in 18CER007**
 - **170m @ 0.42 gpt gold incl 32m @ 0.87 gpt gold, 0.06% copper in 18CER006**
- Excellent bottle roll leach test gold recoveries from 7 drill holes
 - **Oxide Group 1 results: 85.1% gold and 48.3% silver**
 - **Oxide Group 2 results: 87.7% gold and 47.3% silver**
 - **Mixed Oxide/Sulfide Group 3 results: 77.9% gold and 46.7% silver**
 - **Sulfide Group 4 Results: 51.2% gold and 40.1% silver**

Cervantes Project - Next Steps

- **Recently completed 2021 surface work,** geological, structural, and alteration mapping and geochemical rock and soil sampling at the Estrella, Estrella Norte, California Norte and other targets
- **Phase 2 drill program planned to** expand California zone laterally and to depth and test California Norte, Jasper and Purisima East targets
- **Multiple additional high priority targets** yet to be drilled!



Upcoming Catalysts

Q4 2021 – Q2 2022:

- **Tombstone** – Results and interpretation of Phase 2 RC drilling program testing shallow epithermal gold-silver mineralization
- **Cervantes** – Plan and permit a substantial phase 1 RC drilling program on the California and Purisima targets
- **Tombstone** – Phase 3 Core Drill program to target deeper epithermal gold-silver mineralization below the Contention pit and deep CRD silver-lead-zinc-copper-gold mineralization in Paleozoic limestones underlying the Bisbee Sediments
- **Cervantes** – Phase 2 RC drilling program on the California, California Norte, Jasper and Purisima East targets

Capital Structure

Exchange Listings:	TSXV:AZT, OTCQB:AZZTF
Shares Issued:	59.7 million
Options:	5.7 million
Warrants:	7.9 million
Fully Diluted:	73.3 million
Insider Holdings:	7.6 million (14%)
Closely Held:	12.0 million (20%)
Working Capital:	C\$1.6 million
Market Cap:	C\$17.9 million



Comparable TSX-V Listed Exploration Companies

Company Name	Ticker	Exploration Stage	Working Capital (CAD)	Market Cap (CAD)	Enterprise Value (CAD)
Minera Alamos	MAI.V	Development	\$ 15.0	\$ 230.6	\$ 215.7
Blackrock Silver	BRC.V	Discovery	\$ 9.1	\$ 103.5	\$ 94.4
Japan Gold	JG.V	Discovery	\$ 6.1	\$ 64.1	\$ 58.0
Talisker Resources	TSK.V	Discovery	\$ 22.4	\$ 62.8	\$ 40.4
Aztec Minerals	AZT.V	Discovery	\$ 1.6	\$ 17.9	\$ 16.3

Source: Company Documents, Market Values as of Oct 4, 2021

Management and Directors

Bradford Cooke, M.Sc., P. Geo., Chairman and QP

Founder of Aztec Minerals, Endeavour Silver and Canagold Resources, participated in several mineral Discoveries and mine developments, 43 years experience in the mining industry

Simon Dyakowski, CFA, MBA, President & CEO

Capital markets professional, 13 years of corporate development and capital markets experience, with an expertise in strategic planning and execution, financing and marketing of exploration companies

Allen David V. Heyl, B.Sc., CPG, VP Exploration

Professional geologist, 38 years experience played key roles in the discovery and evaluation of more than 30 million oz gold and 25 million tonnes copper in reserves and resources in the Americas

Philip Yee, MBA, C.G.A., CFO

Certified General Accountant, 30 years experience in accounting, management, regulatory affairs

Mark Rebagliati, B.Sc., P. Eng., Director

Renowned geologist, managed several major porphyry discoveries for Hunter-Dickinson Group, Member of Canadian Mining Hall of Fame

Patricio Varas, B.Sc., P. Geo., Director

Founder and Chairman of Western Potash and Boreal Metals, more than 30 years experience

Jim Schilling, Director

30 years of experience in Canadian and U.S. Financial markets, founder of West Coast Consulting in Portland

Stewart Lockwood, LLB, MBA, Director and Corporate Secretary

Partner with McCullough O'Connor Irwin LLP, with 30 years experience in corporate, mining and securities law

Why Aztec Minerals?

- **Experienced Management and Directors**, successful track records for discovering orebodies, operating mines and selling companies
- **Attractive Valuation**, CAD\$17.9 Million with 59.7 million shares issued, Insiders own 14%, Closely-held 20%
- **Two Prospective Project Joint Ventures**, Cervantes in Sonora and Tombstone in Arizona
- **Currently Drilling to follow up Bulk Tonnage Gold-Silver Discovery** on the Tombstone Property around Contention Pit, wide open for expansion
- **Recent Porphyry Bulk Tonnage Gold-Copper Discovery** on the Cervantes property at the California target, wide open for expansion
- **Prospective CRD polymetallic mineralization** at Tombstone property similar to Taylor discovery (100 million tonnes of 10% ZnEq) located 60 km SW of Tombstone, purchased for \$1.8 billion by South32

Contact Information



Contact:

Simon Dyakowski, President & CEO
Vancouver, B.C.

Cell: (604) 619-7469

Email: simon@aztecminerals.com

Bradford Cooke, Chairman & QP
Vancouver, B.C.

Tel: (604) 685-9770



Time to catch the Aztec stage coach!

www.aztecminerals.com