



*Corporate Presentation*  
*Precious Metals Summit, Zurich*  
*November 2019*



# Disclaimer

---

The material in this presentation contains certain forecasts and forward-looking information, including regarding possible or assumed future performance or potential growth of Silver Mines Limited (“SVL”). Such information is not a guarantee of future performance and involves unknown risks and uncertainties, as well as other factors, many of which are beyond the control of SVL. Actual results and developments may differ materially from those expressed or implied by these forward-looking statements depending on a variety of factors.

No representation or warranty, expressed or implied, is made or given by or on behalf of SVL, any of SVL’s directors, or any other person as to the accuracy or completeness or fairness of the information or opinions contained in this presentation and no responsibility or liability is accepted by any of them for such information or opinions or for any errors, omissions, misstatements, negligent or otherwise, or for any communication written or otherwise, contained or referred to in this presentation.

Accordingly, neither SVL nor any of the SVL directors, officers, employees, advisers, associated persons or subsidiary undertakings shall be liable for any direct, indirect or consequential loss or damage suffered by any person as a result of relying upon the statement or as a result of any admission in, or any document supplied with, this presentation or by any future communications in connection with such documents and any such liabilities are expressly disclaimed.

# Silver Mines Limited Introduction

---

## **BOWDENS SILVER A MAJOR ASSET FOR DEVELOPMENT**

Feasibility complete for 2.0 Mtpa development.

One of the largest undeveloped silver deposits globally.

New South Wales, Australia is a safe quality jurisdiction.

## **UNLOCKING A MAJOR MINERALISED SYSTEM THROUGH EXPLORATION SUCCESS**

Major Exploration Targets at Bowdens Silver and Barabolar:

Confirmed significant extensions to mineralisation close to mine.

Discovered new base-metal massive sulphide including gold.

Discovered porphyritic felsic intrusion under the current resource.

Discovered extensive mineralised skarn with copper/gold targets.

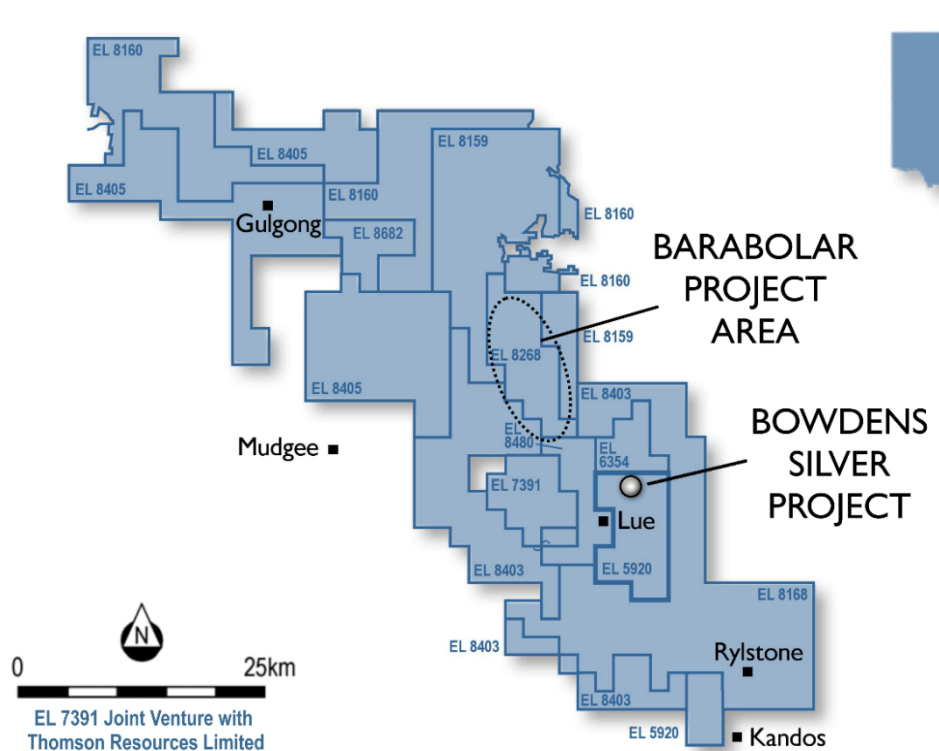
## **8000 METRES DRILLING PROGRAM COMMENCING**

# Silver Mines Limited Snapshot

<b><u>Capital Structure</u></b> <b>ASX:SVL</b>			
Shares on Issue	867.5m	<b>Options</b>	
Current Share Price	A\$0.10	Sept 2021 @ \$0.06	118.1m
Undiluted Market Capitalisation	A\$86.7m	Aug 2021 @ \$0.10	8.5m
Cash (end September 2019)	A\$10.6m	3 year milestone @ \$0.20	5.0m
<b><u>Directors</u></b>		<b><u>Institutional Shareholders</u></b>	
Keith Perrett, Chairman		Sprott	Konwave
Anthony McClure, Managing Director		Regal	Brick Lane
Peter Langworthy, Non Executive Director			
Jonathan Battershill, Non Executive Director			
<b><u>Assets</u></b>			
Bowdens Silver	Mineral Resources	163 Moz Silver	275 Moz Silver Equivalent
	Ore Reserve	66 Moz Silver	97 Moz Silver Equivalent
Major Exploration Package Central New South Wales, Australia, Bowdens Silver Extensions and the Barabolar Project, the		High order targets include precious metals epithermal, base metal VMS, Orogenic Gold, Intrusion Related Porphyry.	



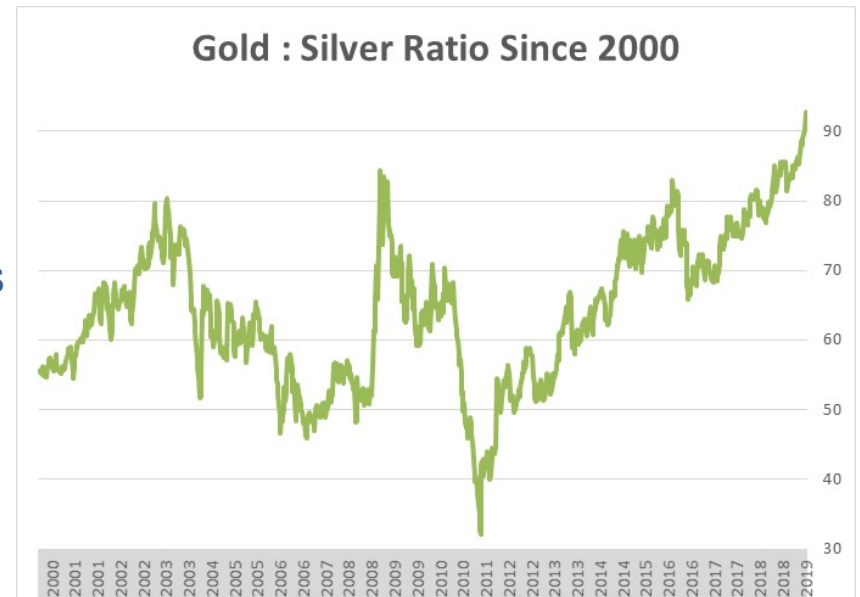
## **Quality Jurisdiction - New South Wales, Australia**



- **New South Wales, Australia a quality jurisdiction.**
- **Major minerals projects in the state include;**
  - **Cadia/Ridgeway, Newcrest (650,000oz Au, 65,000t Cu pa).**
  - **Cowal, Evolution (260,000oz Au pa).**
  - **Northparkes, CMOC (60,000t Cu, 50,000oz Au pa).**
  - **Plus coal mining exports (170 million tonnes pa).**
- **Bowdens Silver Project Classified as a State Significant Development.**

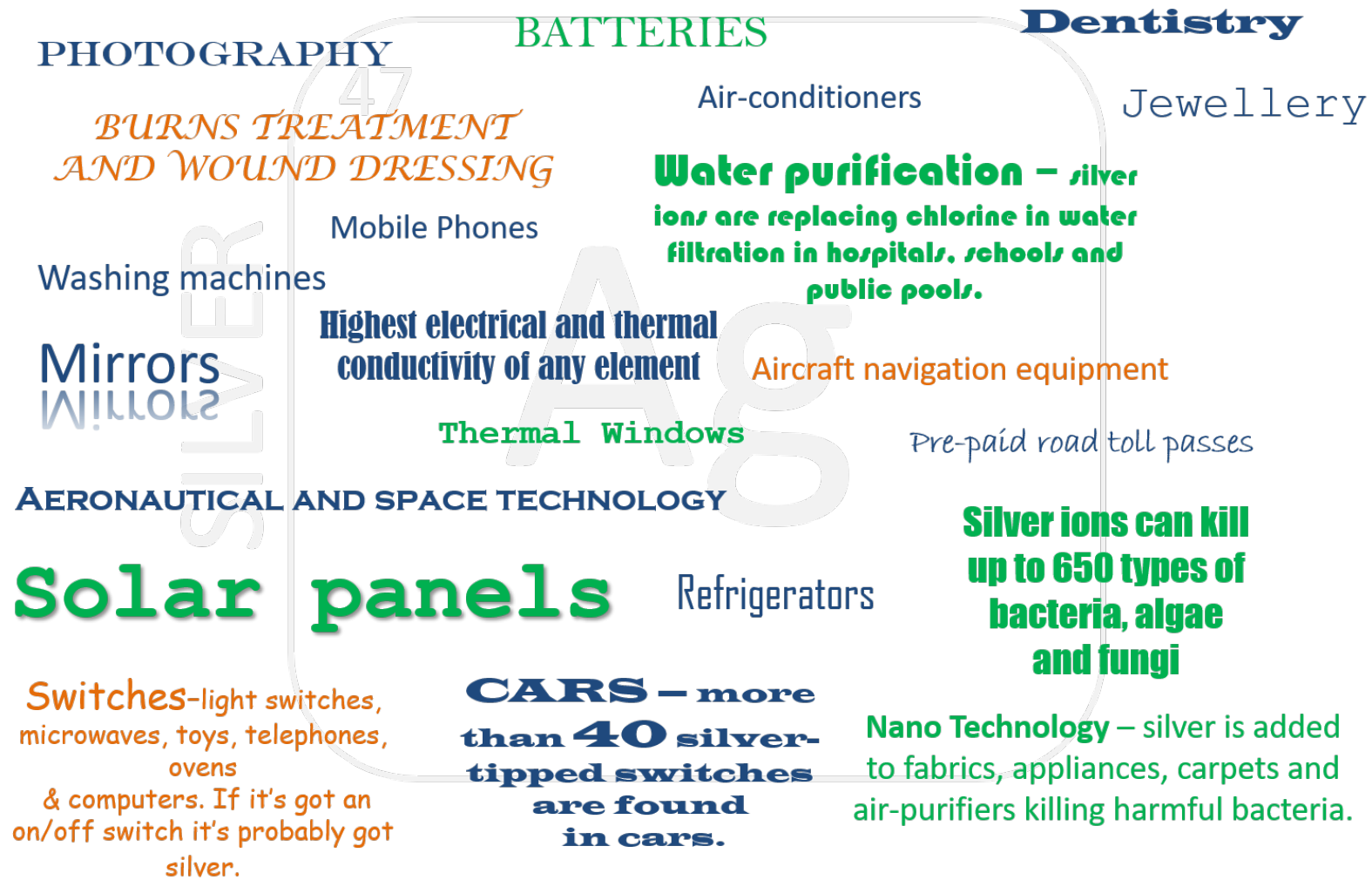
# Bowdens Silver – A Major Asset

- 100% owned.
- Mineral Resource 275 Moz Ag Eq
- One of the largest undeveloped silver deposits in the world.
- Feasibility complete.
- EIS to be submitted shortly along with application for development approvals.
- Primary aspects of EIS now complete with positive outcomes across the board.



- A high Gold : Silver ratio (now at 84:1) precedes a very positive silver market.

# Silver Uses



# Bowdens Silver Feasibility Study

**September 2017**

*Mineral Resource Complete  
(275 Moz Ag Eq)*



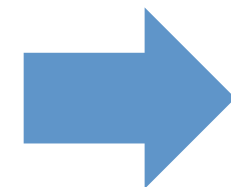
**May 2018**

*Ore Reserve Complete  
(97 Moz Ag Eq)*



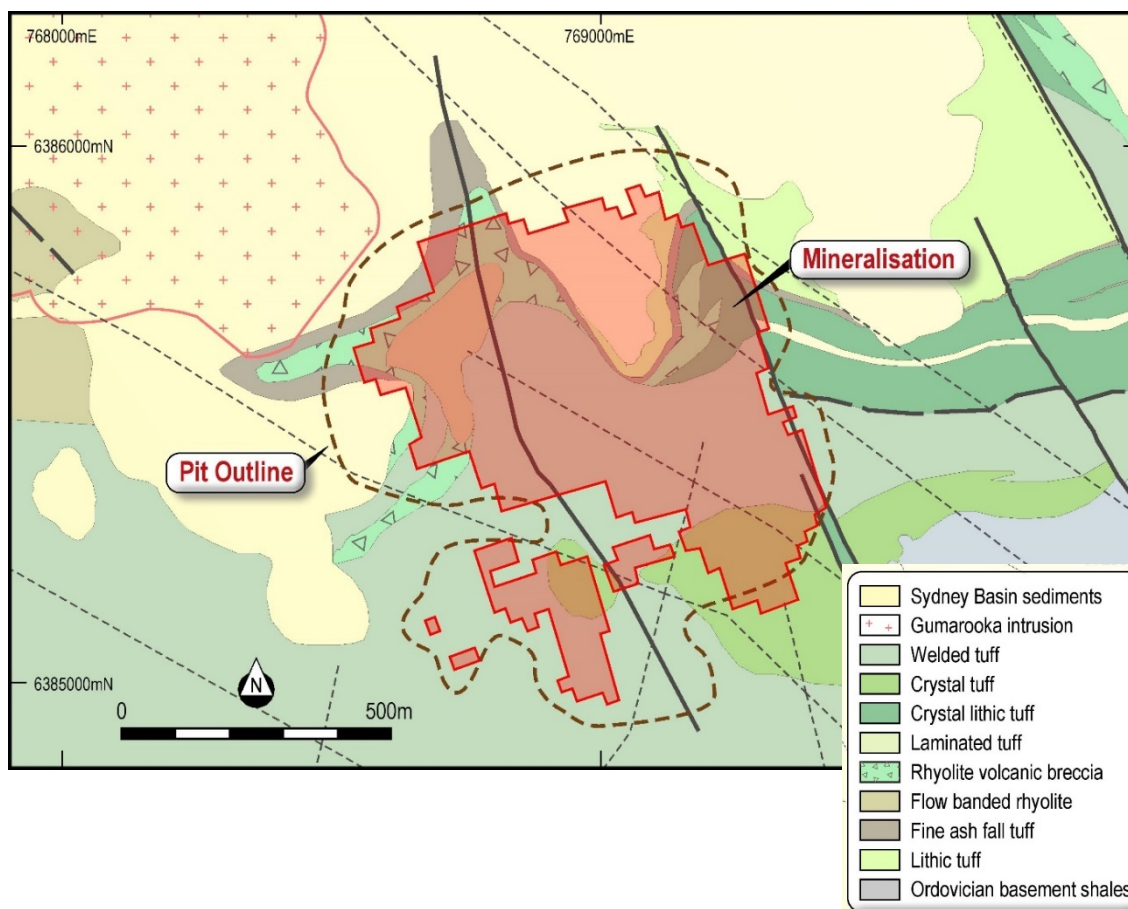
**June 2018**

*Feasibility Study Complete*



**2019/2020**

*EIS and Approvals*





# Bowdens Silver Feasibility Study

Physical Metrics	Unit	Value
Production Life	Years	15.5
Ore Mined	Mt	29.9
Waste Mined	Mt	48.2
W:O Strip Ratio	x	1.6
Ag Recovered in Concentrate	Moz	52.91
Zn Recovered in Concentrate	kt	108.0
Pb Recovered in Concentrate	kt	79.3
Financial Metrics	AUD M	USD M
Revenue	1,899.5	1,424.7
Operating Expenses	1,340.8	1,005.6
Operating Margin	558.7	419.0
Capital Costs	AUD M	USD M
Initial	246.0	184.5
LOM Sustaining	53.9	40.4
Unit Costs (Silver Basis)	AUD/ounce	USD/ounce
C1 Costs	15.47	11.60
All in Sustaining Cost (AISC)	17.25	12.94

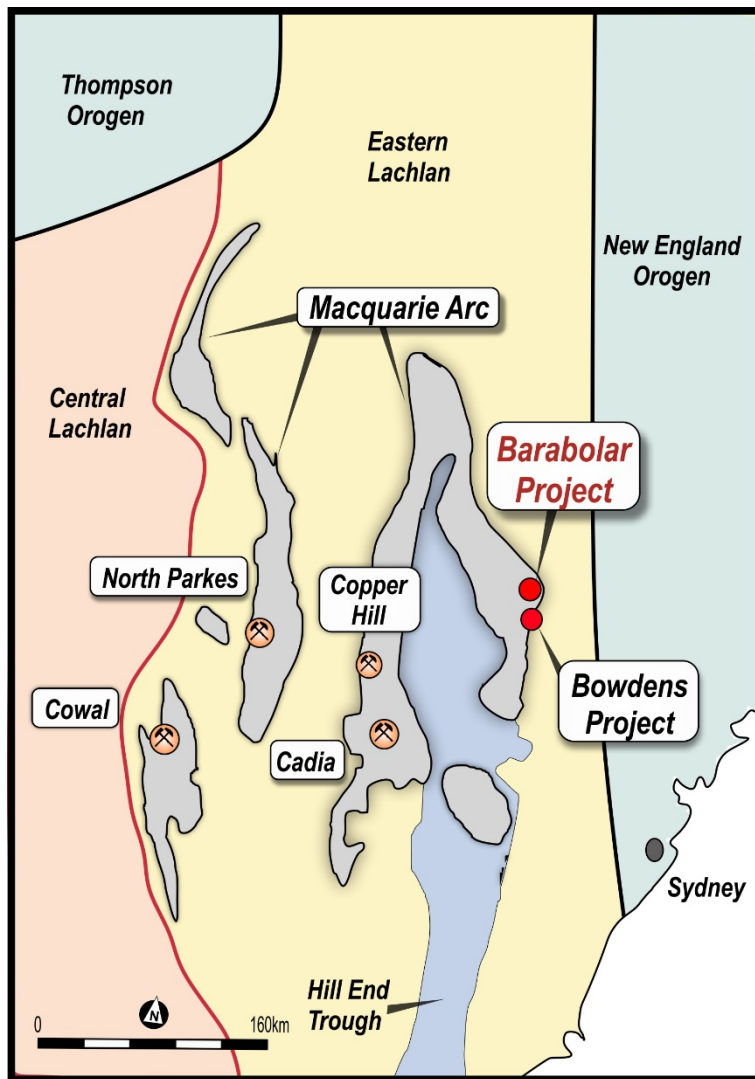
# Bowdens Silver Exploration

---

## *A Major Silver System*



# Regional Geology



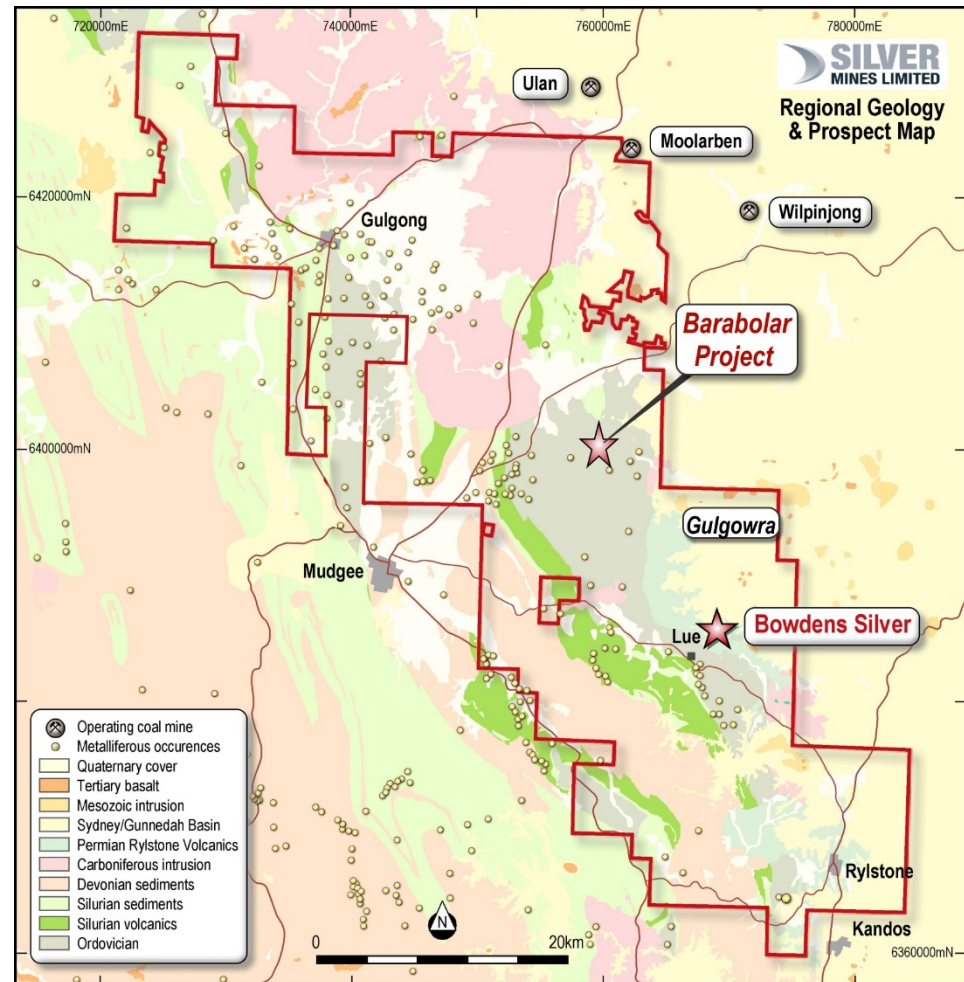
Basement Paleozoic geology, Central NSW

- The Ordovician Macquarie Arc/Lachlan Fold Belt of Eastern Australia contains preserved porphyry volcanic arc environments.
- Macquarie Arc of NSW contains world-class;
  - Cadia/Ridgeway,
  - Cobar,
  - Northparkes and others.
- The Bowdens portfolio demonstrates that the eastern limb of the Macquarie Arc has the potential for significant mineral systems.
- Substantial work by UNSW.



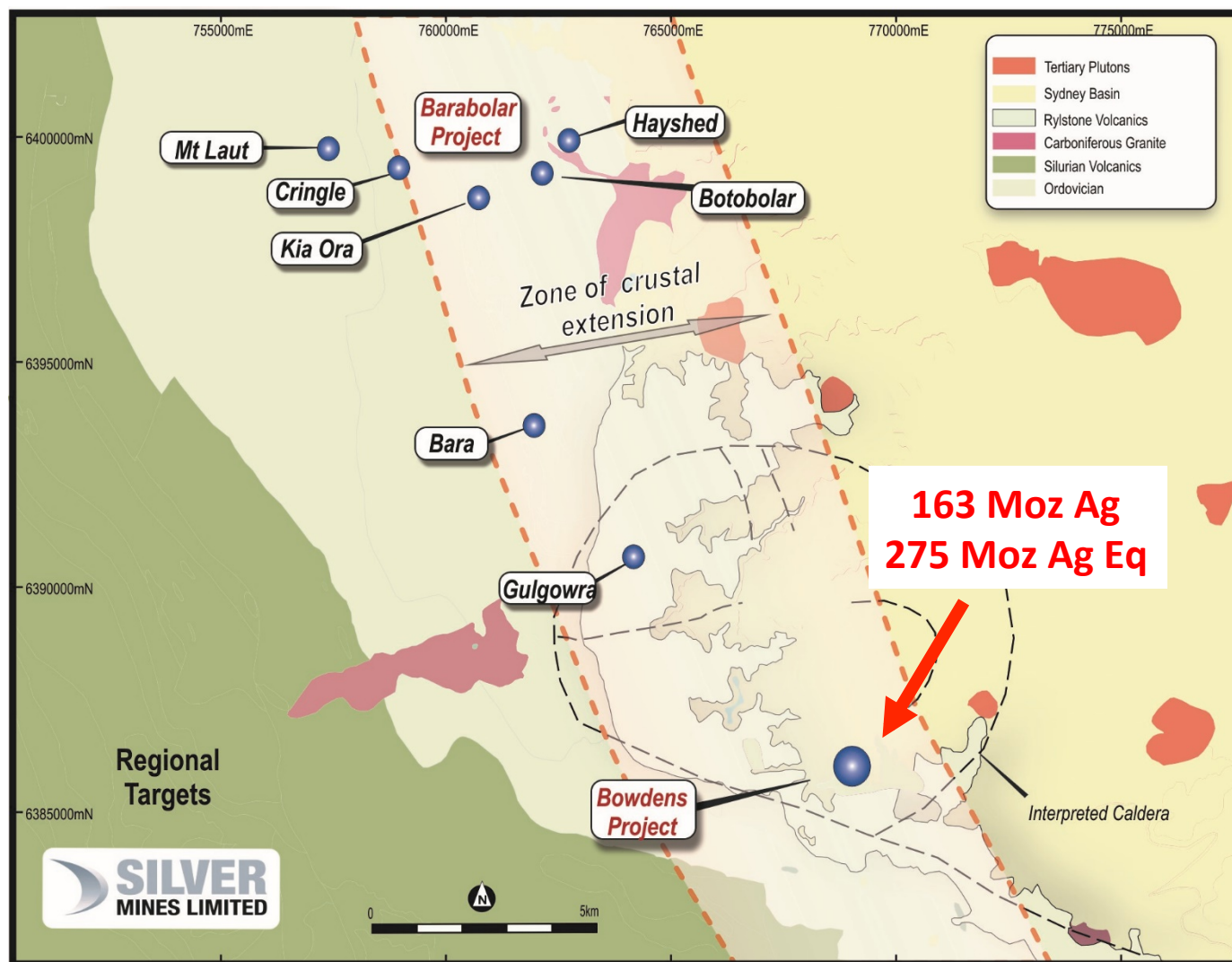
# Regional Geology

- Extensive tenement holding (2007 km<sup>2</sup> = 496,000 acres) controlled by Silver Mines.
- Northeast corner of Lachlan Fold Belt & Macquarie Arc.
- Wide range of prospective deposit types over different time periods (Ordovician, Siluro-Devonian, Carboniferous and Permian).
- Mineral deposit styles/potential include:
  - Cadia/Ridgeway style Porphyry (Cu-Au-Mo).
  - Epithermal (Au-Ag).
  - McPhillamy's style Shear hosted gold with base-metal association.
  - Woodlawn style Volcanogenic Massive Sulphide (VMS).
  - Bowdens Style epithermal (Ag-Zn-Pb).



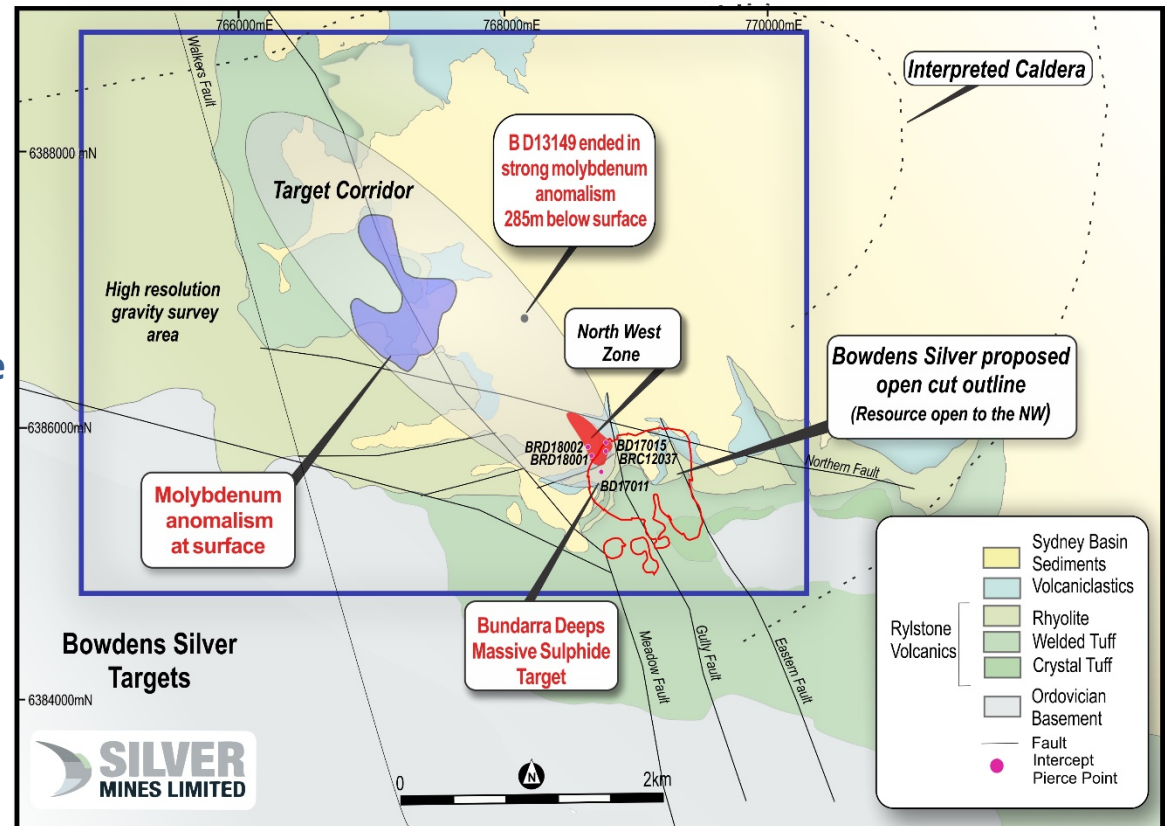


# Site Geology



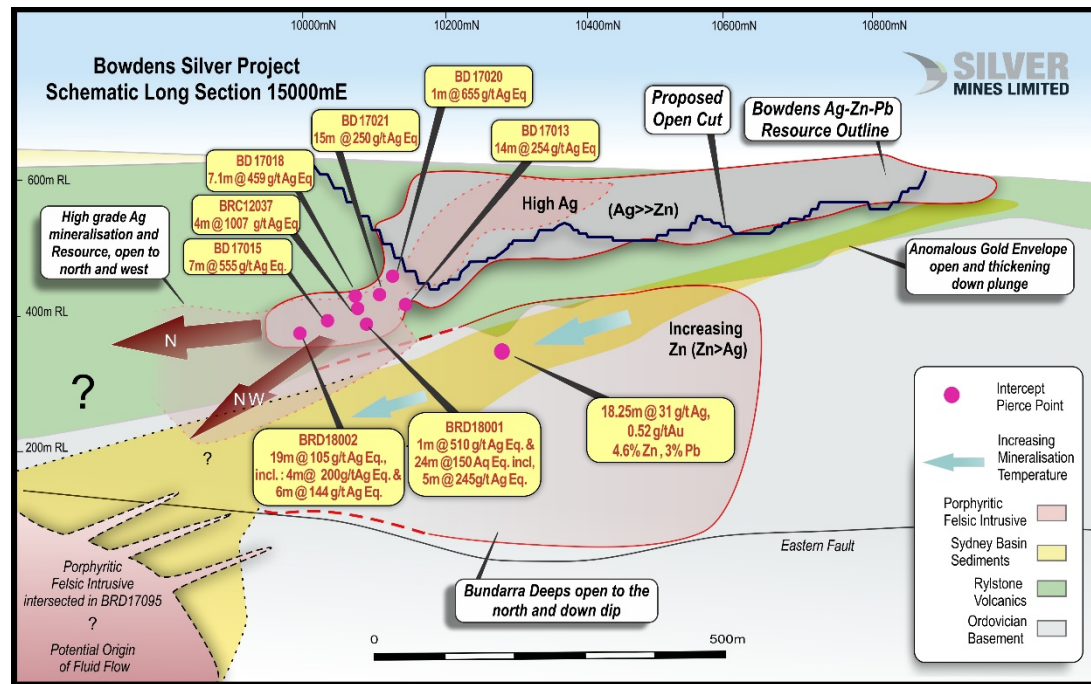
# Bowdens Silver Extensions

- Expanded exploration program commenced in September 2019 to assess along strike and depth extensions to the Bowdens Silver Deposit.
- Assess Bundarra Deeps where massive to semi-massive sulphide including gold has been discovered over +30m widths.
- Assess the discovery of porphyritic felsic intrusion associated with strong metal zonation consistent with porphyry associated gold-copper mineralisation.
- Assess the NW target corridor targeted with molybdenum anomalism, multivariate geochemistry, sulphur isotope work and geological modelling that indicates an intrusive source to the northwest of Bowdens.



# Bowdens Silver Extensions

- Assess the Northwest Zone that contains high-grade silver and base metal mineralisation between 10 and 30 metres thick currently defined over a strike length of 150 metres and open in several directions.
- Conducted high resolution geophysical gravity program covering 30km<sup>2</sup> – complete with interpretation being finalised.
- To target buried porphyry source and structural control in the NW target corridor.
- Drilling of up to 4000 metres commencing shortly (subject to approvals).





# Barabolar Project

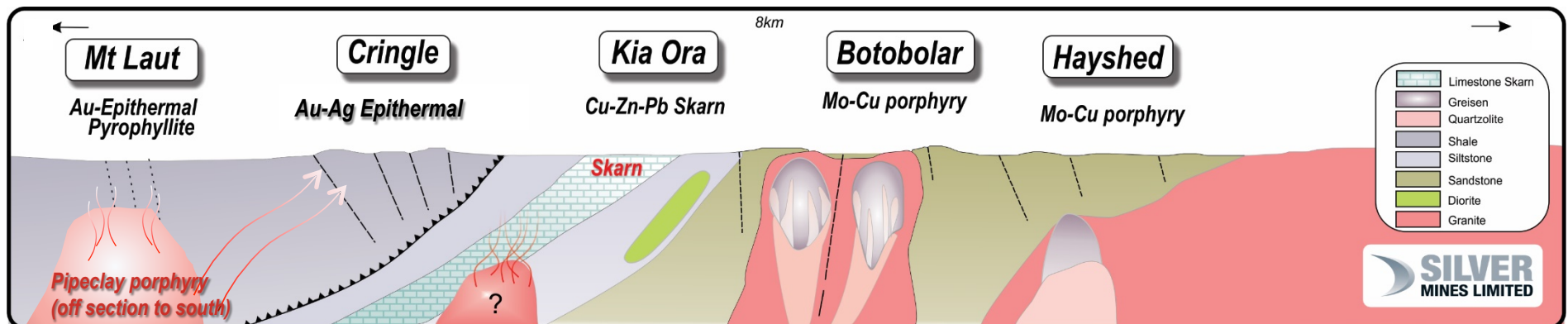
## *Unlocking a Major Mineralised System*



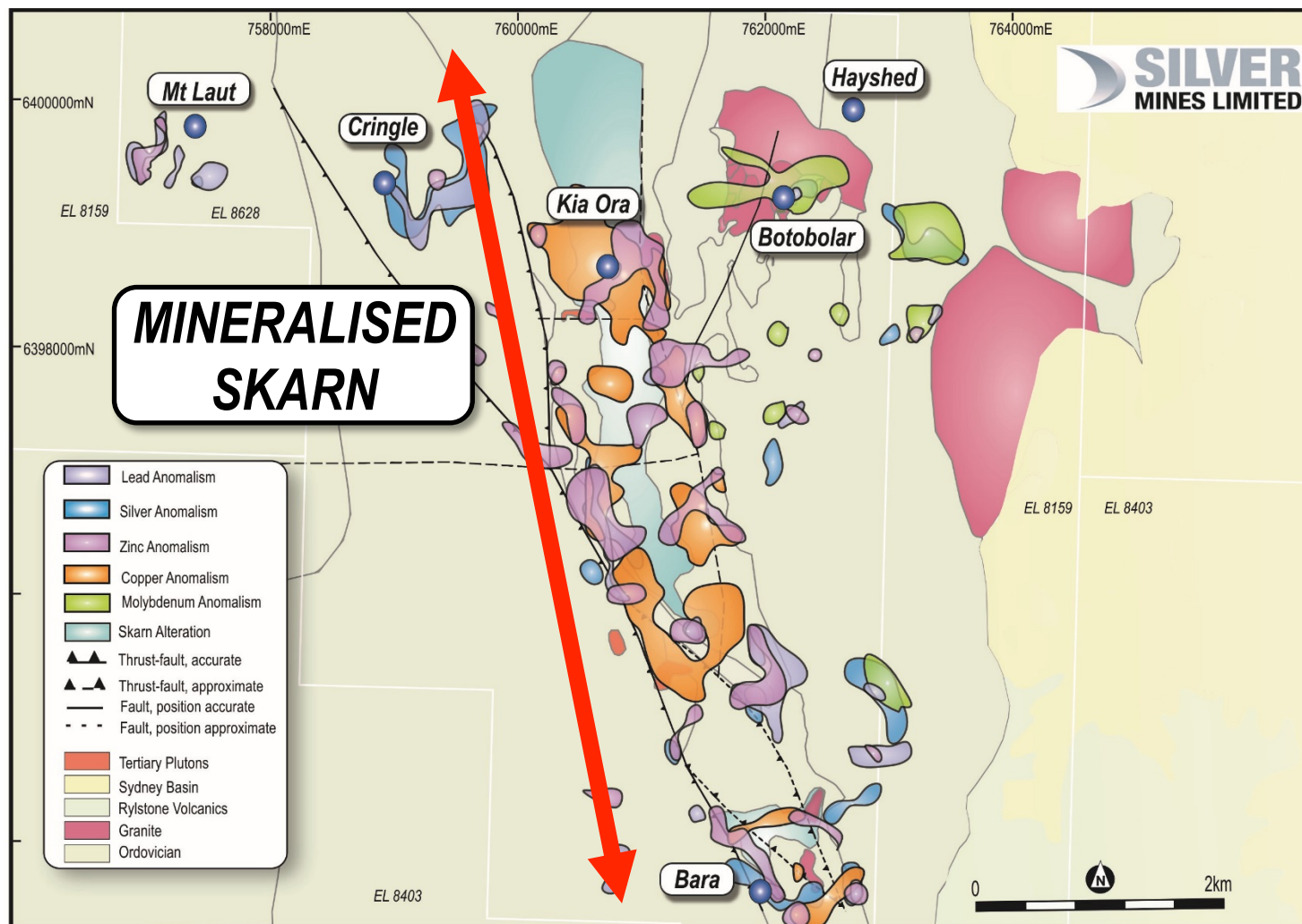


# Unlocking a Major Mineralised System

- Barabolar Project area located 10 kilometres northwest of Bowdens.
- 9000 x 2000 metre corridor of base-metal and precious metal soil anomalies.
- Mineralised skarn mapped over 5000 by 800 metres.
- Porphyry system type alteration assemblages.
- Several high order prospects:
  - Cringle Au-Ag epithermal.
  - Kia Ora Skarn (and proximal porphyry): Cu-Ag-Zn-Au.
  - Botobolar / Hayshed: abundant coarse molybdenite in associated felsic porphyry.

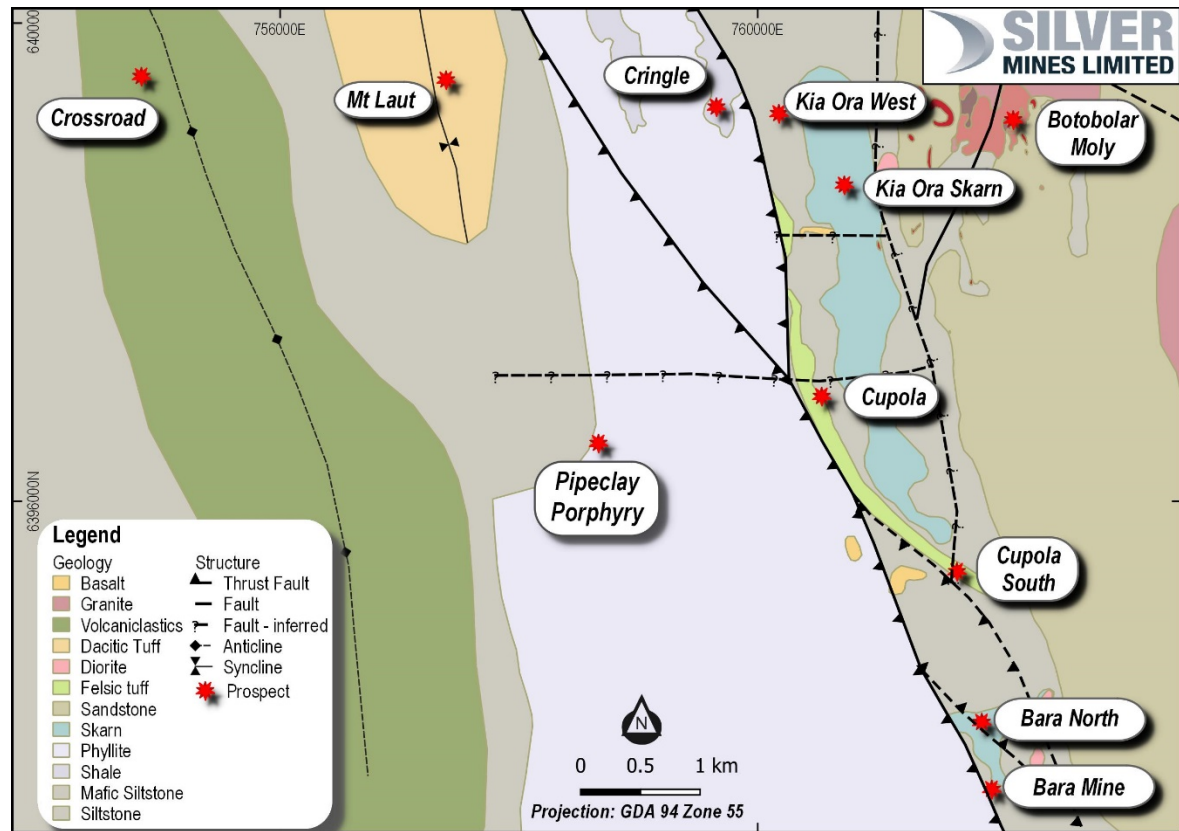


# Unlocking a Major Mineralised System



# Geophysics and Drilling

- Induced Polarisation (IP) program (~30 line kms) completed.
- Substantial gravity survey completed with interpretation being finalised.
- Deep drilling program (up to 4000 metres) commencing early 2020 (subject to approvals).





# Tuena

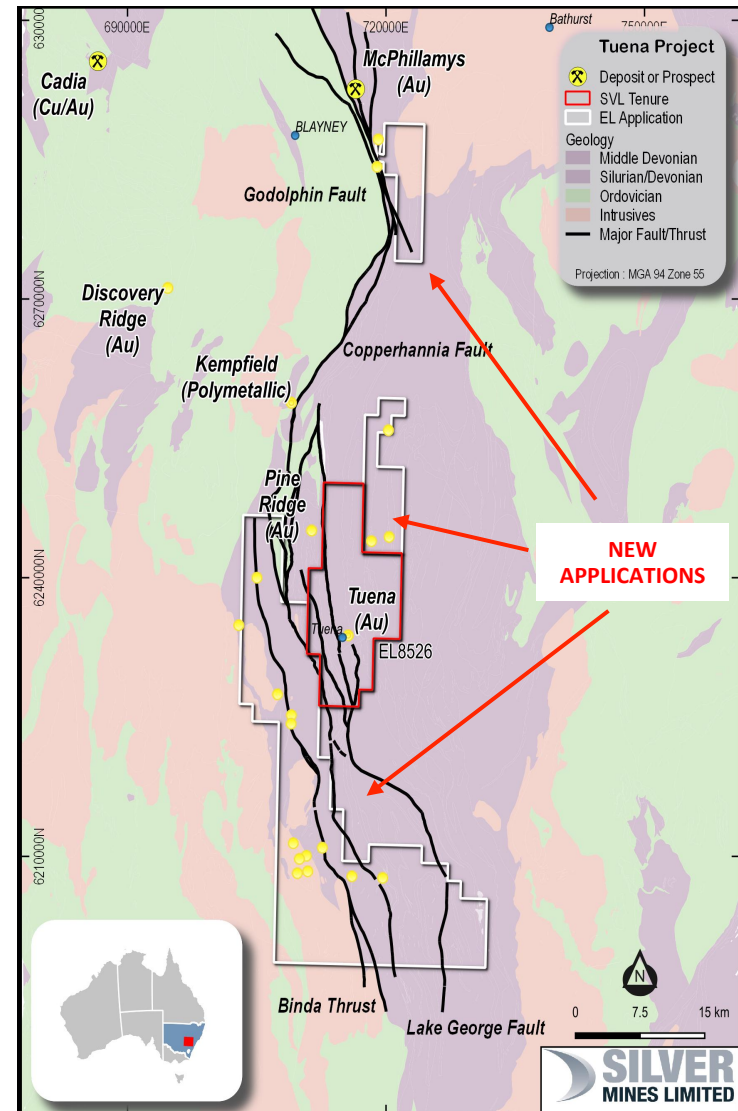
## *Unlocking a New Mineralised System*



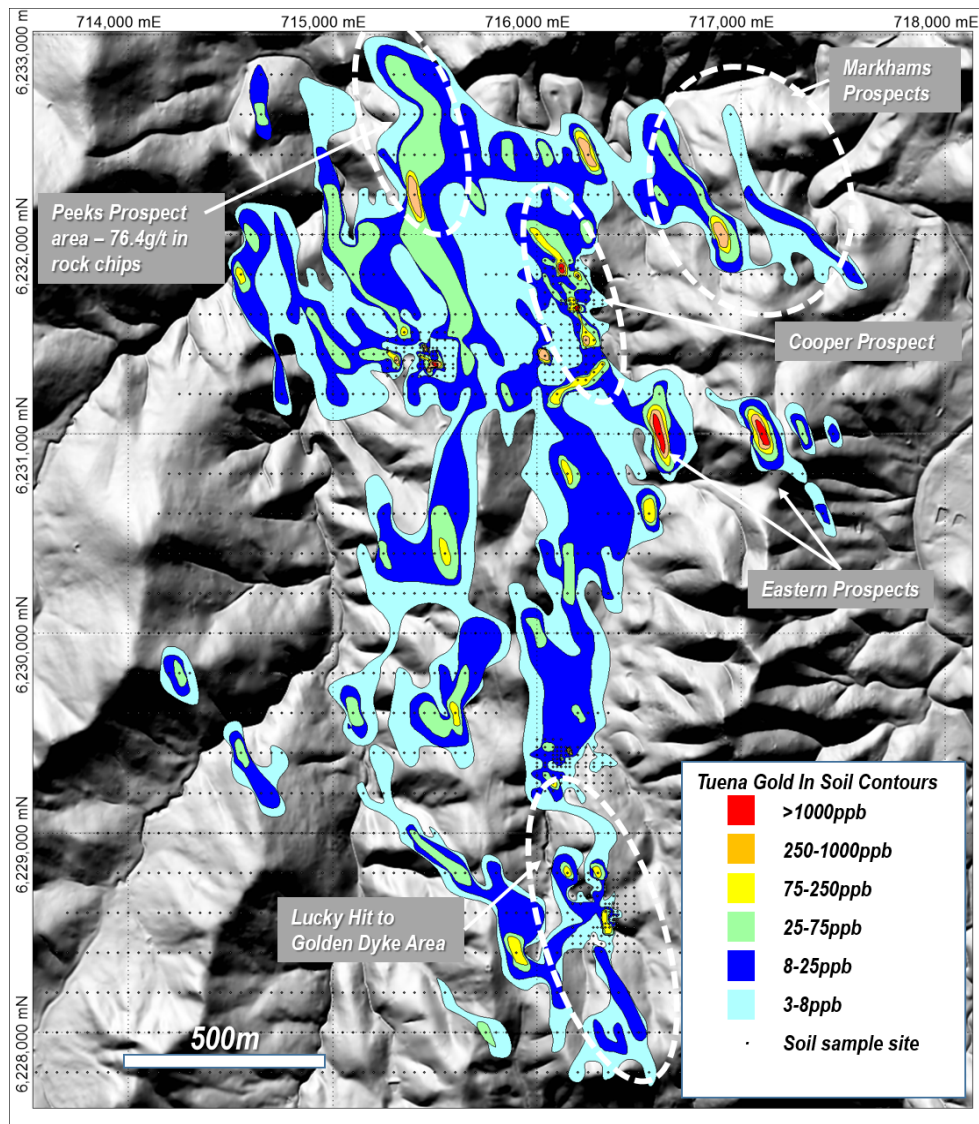


# Tuena

- Located south of Blayney in New South Wales.
- Historic goldfield with minimal exploration work in the modern era.
- Clear geological analogies to the McPhillamys Gold Project (2.0 Moz gold)
- Extensive regional soil sampling program complete and being expanded.
- Mineral system and old workings extend over at least 6 kilometres of strike.
- Reconnaissance mapping is identifying previously unrecorded historic workings and shear zones with substantial width.
- Airborne magnetics and radiometrics survey commencing November 2019.
- Tenement position expanded with 634 km<sup>2</sup> of new exploration licence applications

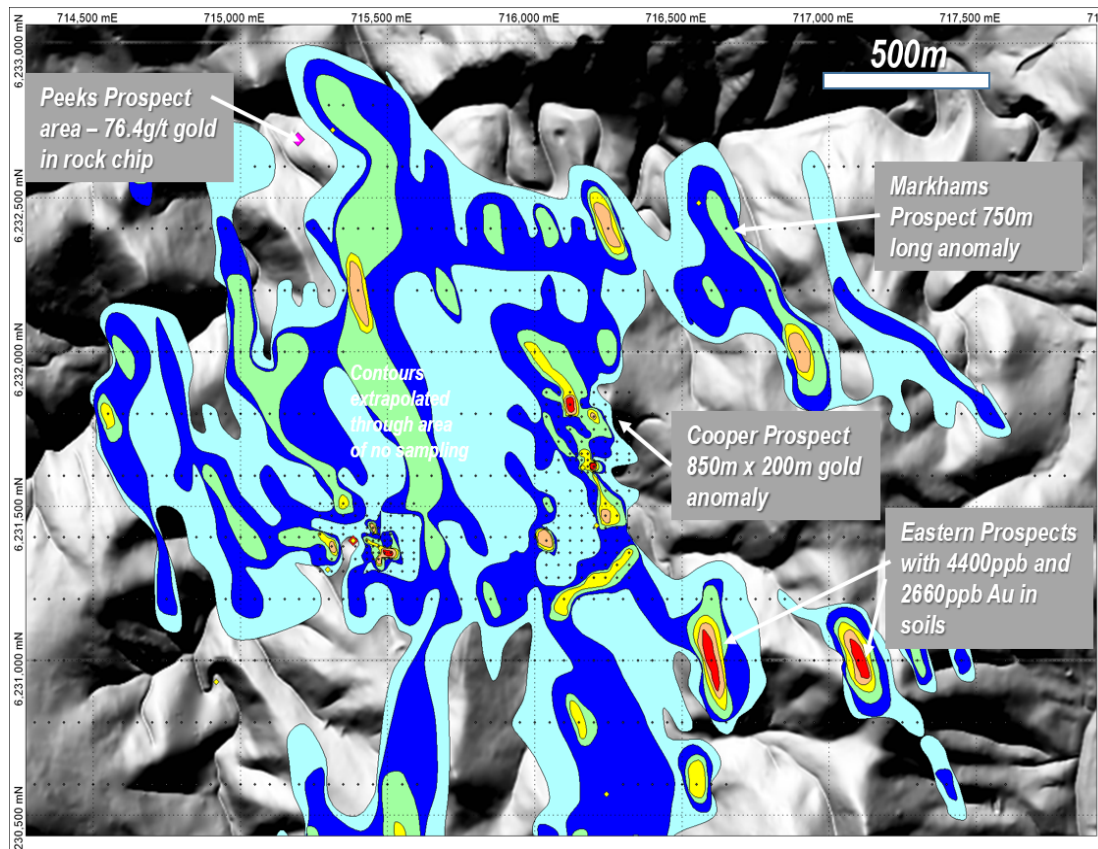


# Tuena



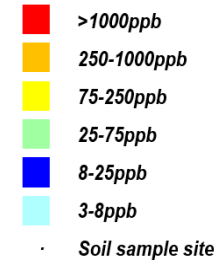
- Substantial gold in soil anomalism over a 5.4km by 1.5km corridor.
- Peeks Reef Prospect 900m x 200m soil anomaly >25ppb gold with individual soil assays up to 268ppb gold and rock chip assays up to 76.4g/t gold.
- Cooper & McKenzie Prospect with 850m x 200m soil anomaly > 25ppb with soil assays up to 1550ppb (1.55g/t) gold.

# Tuena



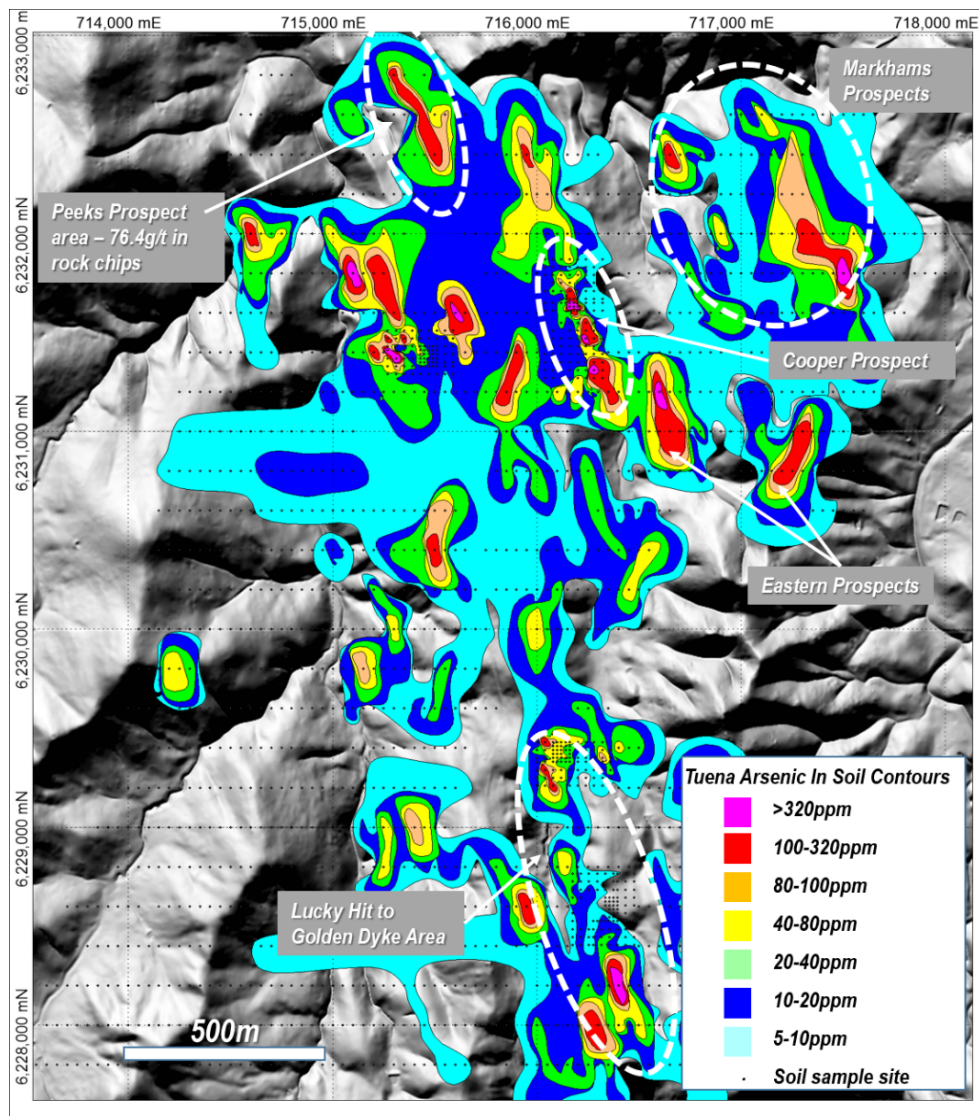
- Gold anomalism northern area.

## Tuena Gold In Soil Contours





# Tuena



- Substantial arsenic (a pathfinder element for gold) in soil anomalism.





# Looking Forward

---

- **Completion of Bowdens Silver Environmental Impact Statement 4<sup>th</sup> quarter 2019.**
- **Submission for Development Consent.**
- **Stronger Market for Precious Metals.**
- **Bowdens Silver new expanded exploration program**
  - 275 Moz silver Eq system open to north and at depth.
  - High grade silver zones and massive sulphide zones exploration program commenced Sept. 2019.
  - Gravity survey complete, up to 4000m deep drilling program commencing shortly (subject to approvals).
- **Barabolar is an outstanding exploration play**
  - 9000 X 2000 metres corridor of base metals and precious metals anomalism.
  - Porphyry system with extensive Cu-Mo-Zn-Ag-Au anomalism to be expanded to the west.
  - Program expanded with a gravity survey complete.
  - Up to 4000m deeper drilling program commencing early 2020 (subject to approvals).
- **Tuena Gold Project is an exciting new gold exploration play.**

A wide-angle photograph of a landscape featuring rolling green hills under a blue sky with scattered white clouds. The foreground is filled with tall, dry grass and some small trees. In the middle ground, there are more hills with patches of green grass and some small structures. The overall scene is a natural, rural landscape.

***Anthony McClure***  
***Managing Director***  
***Silver Mines Limited***  
***+61 2 8316 3997***

