

# Explorer and Miner



ASX: AZS



@AzureMinerals

[www.azureminerals.com.au](http://www.azureminerals.com.au)

**Precious Metals Summit**  
Beaver Creek  
13 September 2019

**Tony Rovira**  
Managing Director  
Azure Minerals Ltd

# Disclaimer – Forward Looking Statements

*This presentation has been prepared by Azure Minerals Limited. It contains background information about Azure Minerals Limited current at the date of this presentation. The presentation is in summary form and does not purport be all inclusive or complete. Recipients should conduct their own investigations and perform their own analysis in order to satisfy themselves as to the accuracy and completeness of the information, statements and opinions contained in this presentation.*

*This presentation is for information purposes only. Neither this presentation nor the information contained in it constitutes an offer, invitation, solicitation or recommendation in relation to the purchase or sale of shares in any jurisdiction.*

*This presentation may not be distributed in any jurisdiction except in accordance with the legal requirements applicable in such jurisdiction. Recipients should inform themselves of the restrictions that apply in their own jurisdiction. A failure to do so may result in a violation of securities laws in such jurisdiction.*

*This presentation does not constitute investment advice and has been prepared without taking into account the recipient's investment objectives, financial circumstances or particular needs and the opinions and recommendations in this presentation are not intended to represent recommendations of particular investments to particular persons. Recipients should seek professional advice when deciding if an investment is appropriate. All securities transactions involve risks, which include (among others) the risk of adverse or unanticipated market, financial or political developments.*

*To the fullest extent permitted by law, Azure Minerals Limited, its officers, employees, agents and advisers do not make any representation or warranty, express or implied, as to the currency, accuracy, reliability or completeness of any information, statements, opinions, estimates, forecasts or other representations contained in this presentation. No responsibility for any errors or omissions from this presentation arising out of negligence or otherwise is accepted.*

*This presentation may include forward-looking statements. Forward-looking statements are only predictions and are subject to risks, uncertainties and assumptions which are outside the control of Azure Minerals Limited. Actual values, results or events may be materially different to those expressed or implied in this presentation. Given these uncertainties, recipients are cautioned not to place reliance on forward looking statements. Any forward looking statements in this presentation speak only at the date of issue of this presentation. Subject to any continuing obligations under applicable law and the ASX Listing Rules, Azure Minerals Limited does not undertake any obligation to update or revise any information or any of the forward looking statements in this presentation or any changes in events, conditions or circumstances on which any such forward looking statement is based.*



# Corporate snapshot

| ASX code                | AZS  |
|-------------------------|--|
| Share Price             | A\$0.15  |
| Shares on issue         | 138.5 million                                    |
| Market Cap              | A\$21 million                                    |
| Cash (at 31/7/2019)     | A\$1.5 million                                   |
| Debt (Convertible Note) | A\$2.0 million                                   |
| Share Spread            | Australia 55%<br>North America 30%<br>Europe 15% |
| Top 20                  | 57%  |

# Experienced Board, Management & Technical Team

## **CHAIRMAN: Peter Ingram**

Geologist with +50 years experience

+20 years CEO of mid-tier gold mining company

## **MANAGING DIRECTOR: Tony Rovira**

Geologist with +30 years experience

Founding CEO of Azure Minerals in 2003

Discovered 3 gold & 2 nickel mines

Australian Prospector of the Year in 2000

## **DIRECTOR (Non- Exec): Dr Wolf Martinick**

Environmental scientist with +40 years experience in environment, water & social aspects of mining

## **CFO: Brett Dickson**

+30 years experience in financial management of public companies in the resources sector

## **COO: Glenn Jardine**

Mining engineer with +30 years experience

Feasibility, development & operation of 6 gold & nickel mines in Australia & Africa

4 years with Azure in Mexico developing Alacrán & Oposura projects

## **VP - EXPLORATION: Brent Hendrickson**

Geologist with +30 years experience in Latin America & fluent in Spanish

Led Azure's team to discover / define 5 precious & base metal deposits

## **MINING MANAGER: Gary Torres**

Mining engineer with +40 years experience

+20 years experience in Mexico & fluent in Spanish

Hands-on and senior management roles in open pit and underground mining operations

## **CHIEF PROJECT GEOLOGIST: Cruz Paez**

Locally-based geologist with +20 years experience

Exploration & underground / open pit mining geology

Hands-on and senior project management roles

Community relations specialist

## **METALLURGIST: Dr Juan Carlos Soto**

Metallurgist with +20 years experience

Locally-based sulphide flotation expert

# Investment highlights

## Alacrán – silver & gold

**JORC resources = 32Moz Ag & 150,000oz Au<sup>1</sup>**

Includes High Grade resource at surface of:

**15.5 million ounces Silver @ 275g/t Ag<sup>1</sup>**

## Oposura – zinc, lead & silver

**JORC resources = 3.1Mt @ 5.0% Zn, 2.7% Pb & 18g/t Ag<sup>2</sup>**

Small-scale mining underway of **15%-20% ZnEq**

DFS for large-scale operation in Q3 2020



1. Refer ASX 1 December 2016, 21 December 2016 & Appendix 4 for details  
2. Refer ASX 8 May 2019 & Appendices 2 & 3 for details



**Alacrán  
Ag-Au-Cu**

Panchita

SONORA

**ALACRÁN**

Oso Negro

El Tecolote

**OPOSURA**

Hermosillo

CHIHUAHUA

**Oposura  
Zn-Pb-Ag**

Port of  
Guaymas

Promontorio

Chihuahua City

Sara Alicia

**Azure office**

DURANGO

Torreón

San Agustín

MEXICO

Mexico City

Port of Manzanillo

Telix

OAXACA

## NORTHERN MEXICO FOCUS

Safe, stable, supportive jurisdiction

Tier 1 mining province

>500 years of mining history

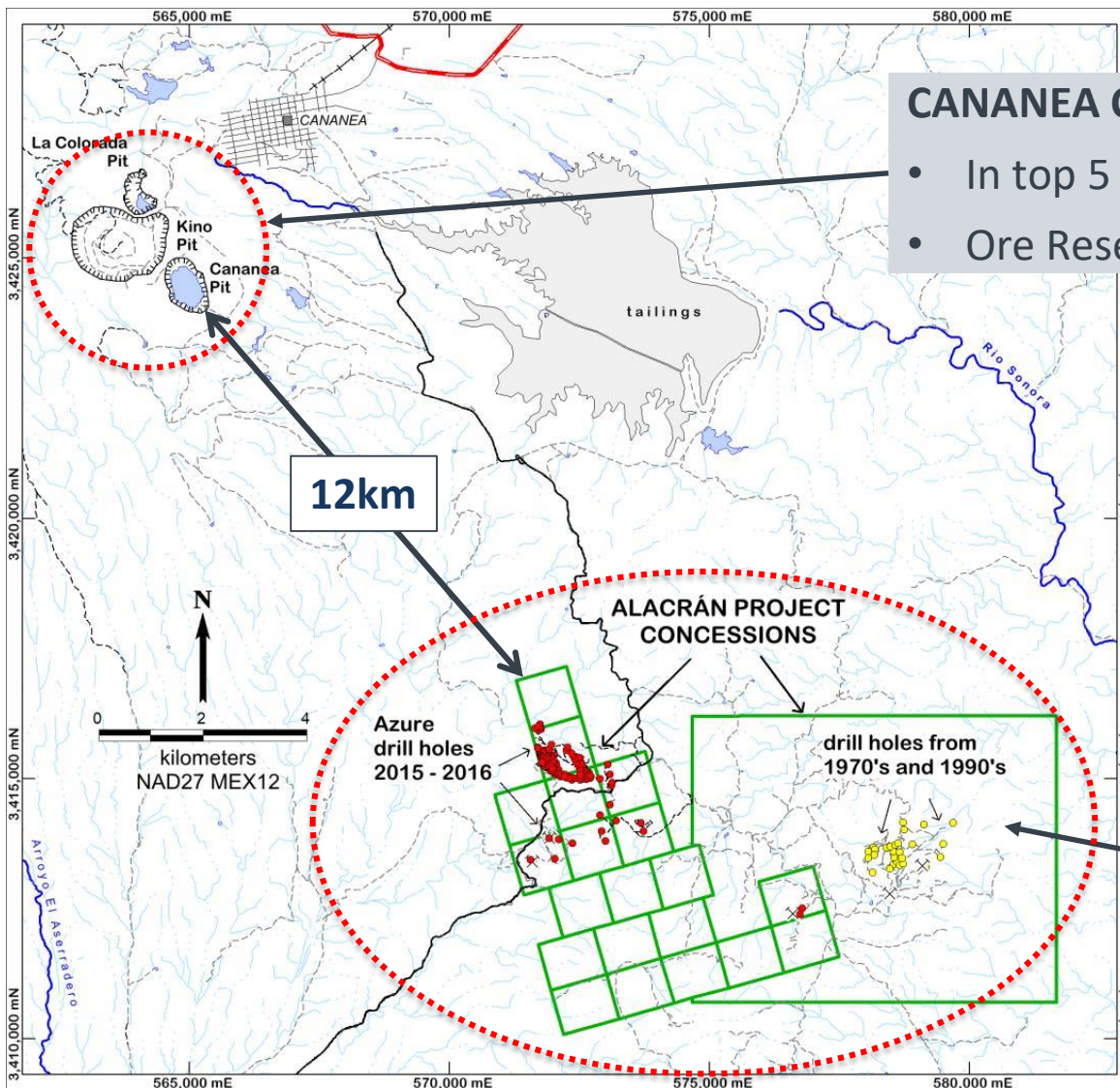
Strong mining culture

Experienced workforce available

Competitive tax rates



# Alacrán: adjacent to Tier 1 copper mine



## CANANEA COPPER MINE

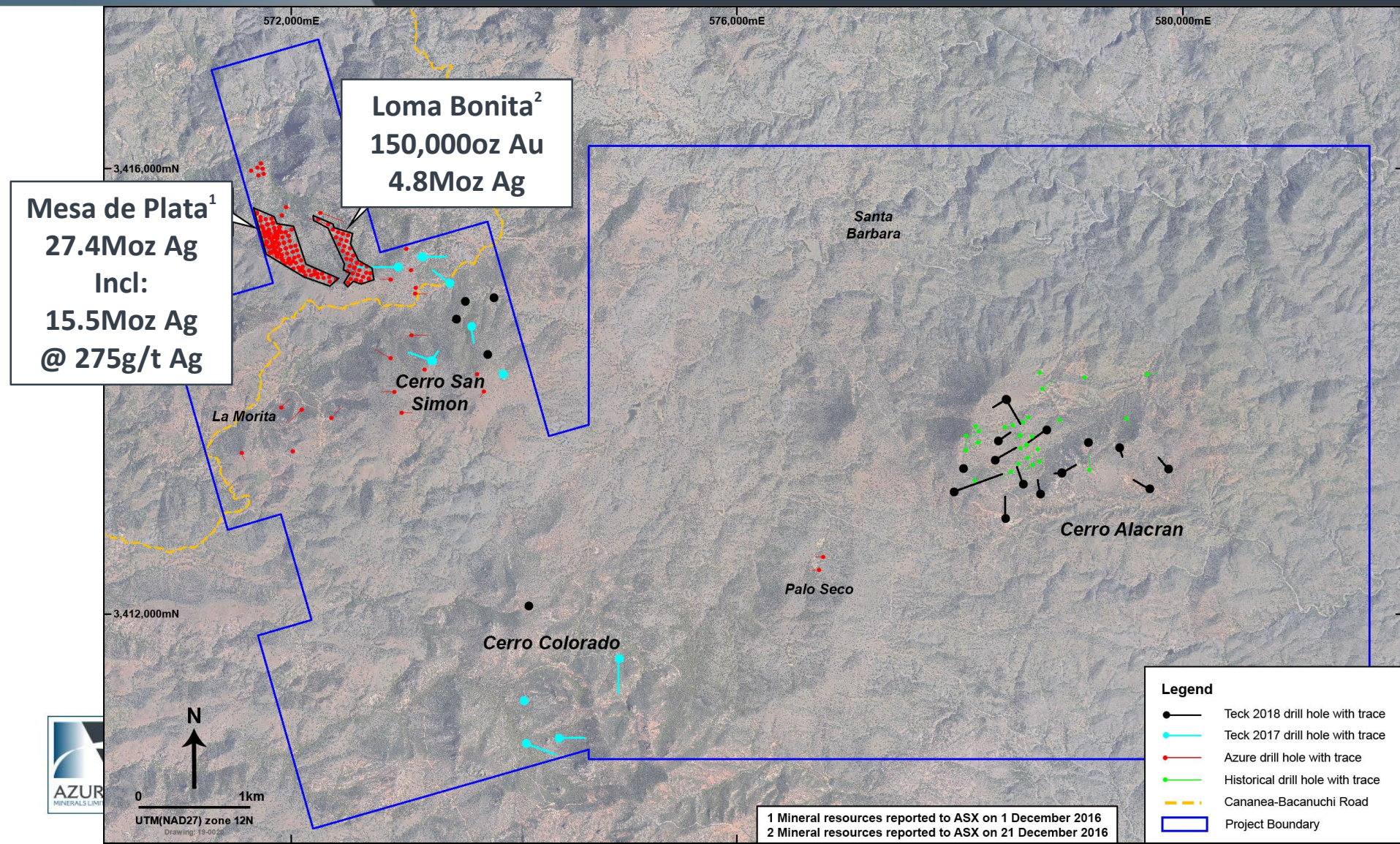
- In top 5 largest copper mines in the world
- Ore Reserves = 8 Billion tonnes @ 0.33% Cu

## ALACRÁN PROJECT - 54km<sup>2</sup>

- Mineral Resources<sup>#</sup> of:
  - 32Moz Ag & 150,000oz Au
- Potential for more silver & gold deposits



# Azure's major silver discoveries





# Alacrán: Mesa de Plata Silver Deposit

## MEASURED & INDICATED MINERAL RESOURCES<sup>1</sup>

**27.4 million ounces of Silver @ 82g/t Ag**

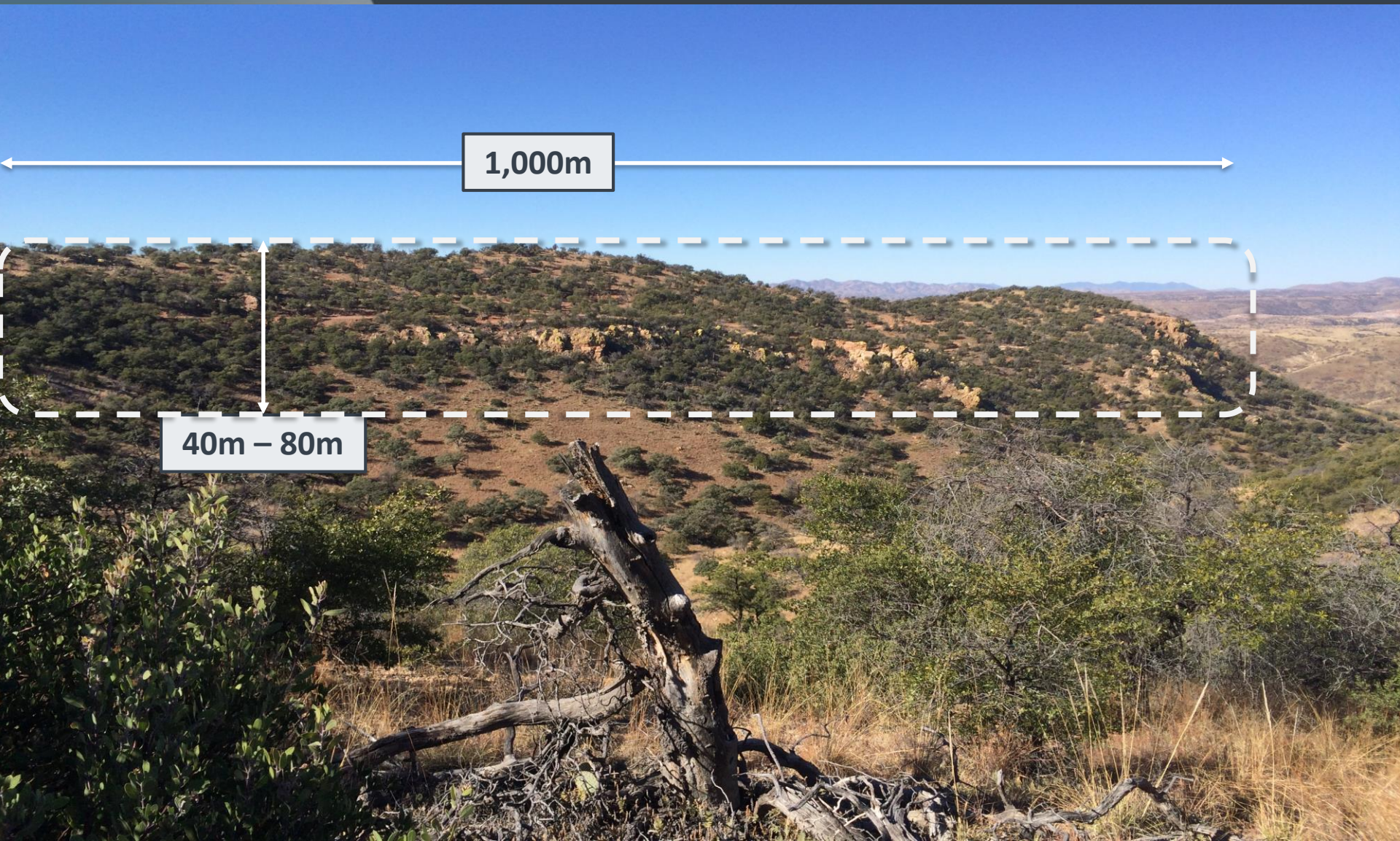
*including a High Grade Zone of:*

**15.5 million ounces Silver @ 275g/t Ag**



1. Refer ASX 1 December 2016 & Appendix 4 for details

# Mesa de Plata: a hilltop deposit



# Mesa de Plata: High-Grade Zone

**15.5 million ounces Silver @ 275g/t Ag**

Better drill intersections<sup>1</sup>:

**9.0m @ 1,235g/t Ag** from 1.5m in LM-09

**10.5m @ 1,044g/t Ag** from 2.0m in MDPD-001

**13.5m @ 738g/t Ag** from surface in MDPC-034

**18.7m @ 530g/t Ag** from 28.8m in MDPD-002





High-grade silver at surface: +1,000g/t Ag



# Alacrán: Loma Bonita Gold-Silver Deposit

## INDICATED & INFERRED MINERAL RESOURCES<sup>1</sup>

150,000 ounces Gold @ 0.9g/t Au

&

4.8 million ounces of Silver @ 28g/t Ag



1. Refer ASX 21 December 2016 & Appendix 4 for details



# Loma Bonita: open for expansion

## DEPOSIT IS OPEN FOR EXPANSION<sup>1</sup>

To the east:

**MDPC-131: 47m @ 2.8g/t Au & 33g/t Ag**

**MDPC-096: 67m @ 1.6g/t Au & 21g/t Ag**

To the south:

**MDPC-098: 24m @ 0.7g/t Au & 13g/t Ag**

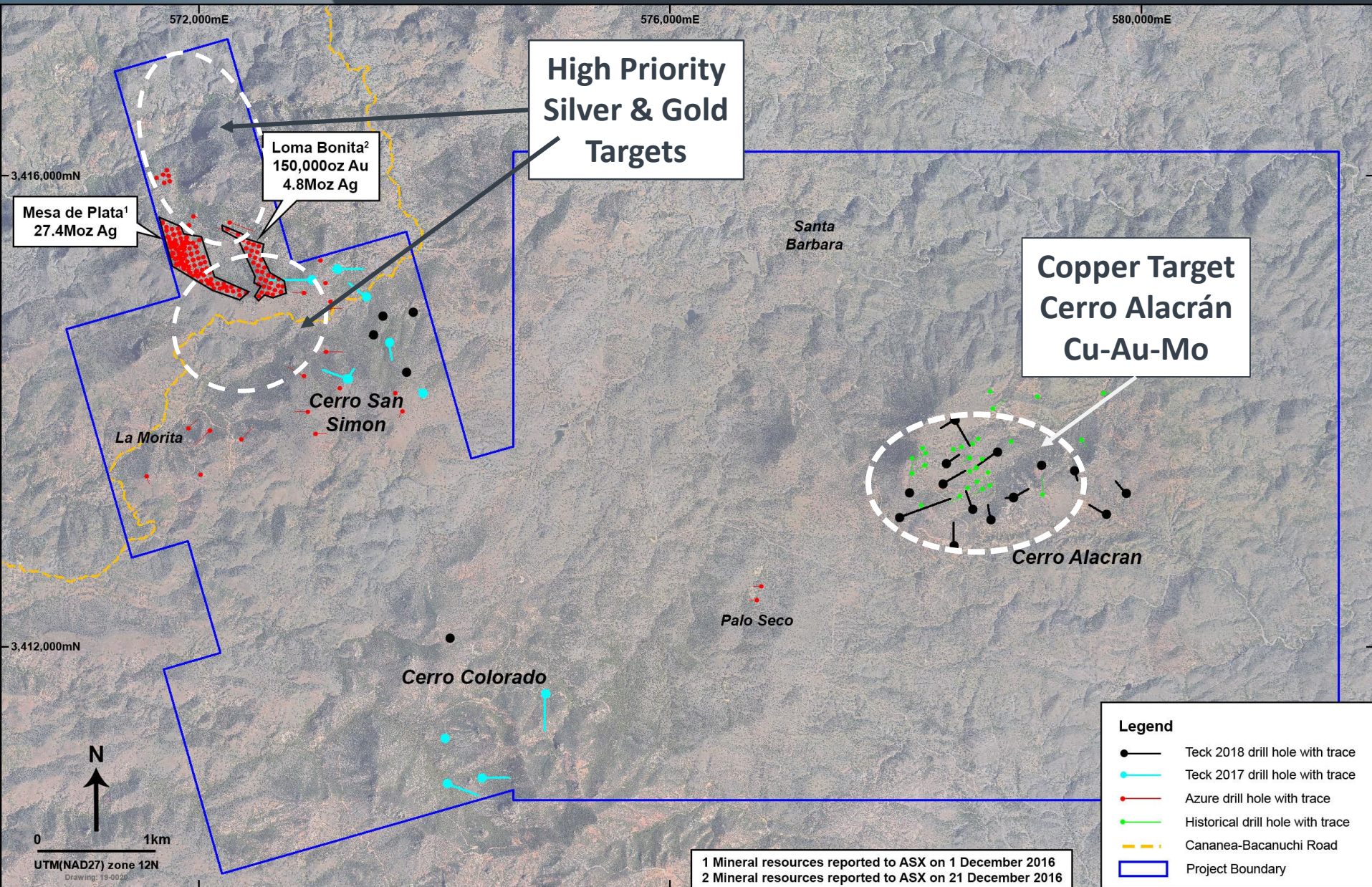
To the north:

**MDPC-135: 17m @ 1.2g/t Au & 86g/t Ag**





# Alacrán targets





# Alacrán: near-term upside catalysts

## **Mesa de Plata & Loma Bonita deposits**

- On top of hill, no overburden = simple open pit mining
- Potential low cost & highly profitable mining operation

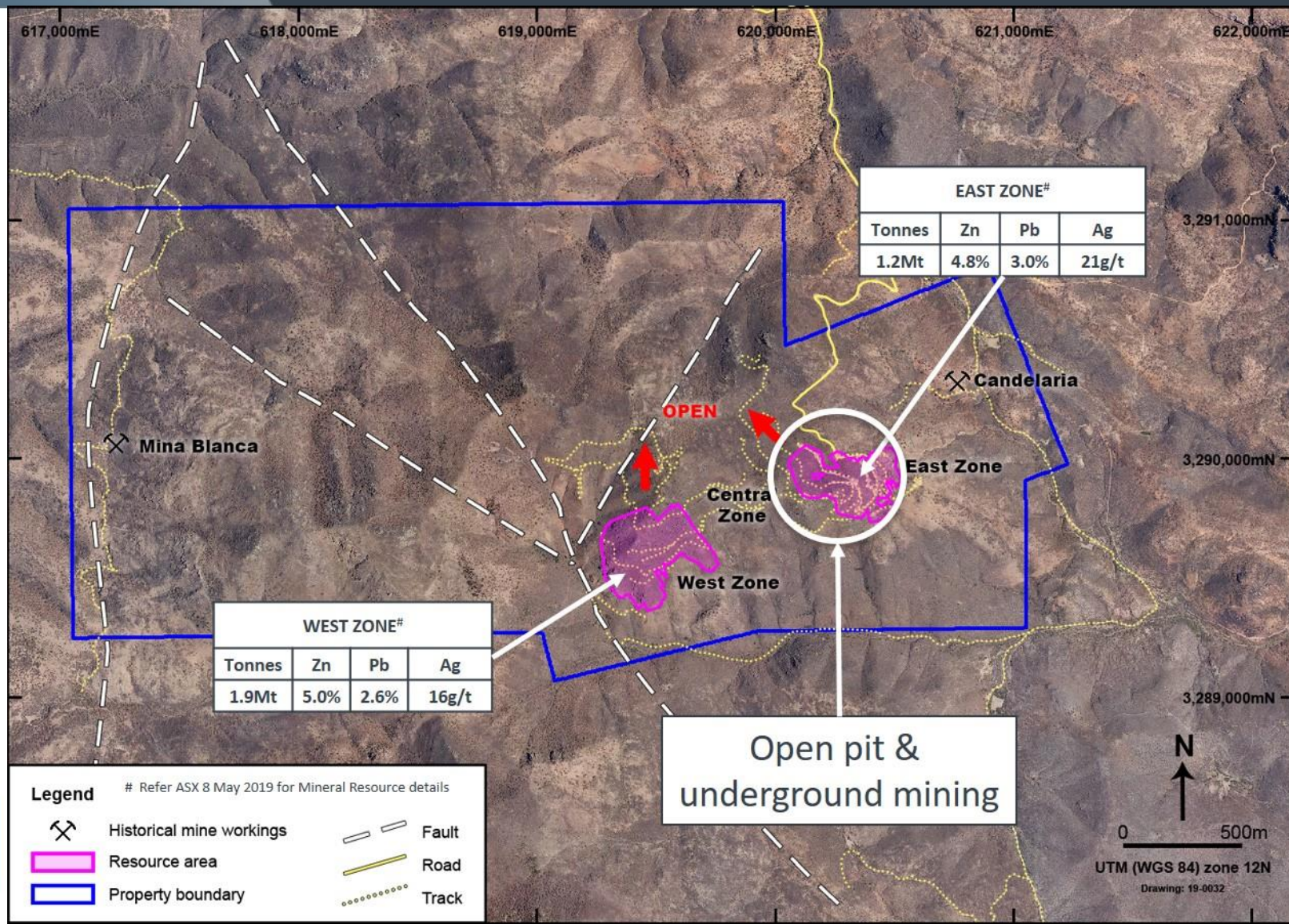
**Increase mineral resources at Loma Bonita & Mesa de Plata**

**Drill new greenfields silver & gold targets**

**Update Cerro Alacrán Cu-Au-Mo mineral resource to JORC**



# Oposura zinc-lead-silver deposit





# Key Oposura highlights

JORC resource = **3.1Mt @ 5.0% Zn 2.7% Pb 18g/t Ag<sup>#</sup>**

Good upside for significant resource increases

Near-surface, flat-lying massive sulphide deposit

Simple geology, simple mining & simple metallurgy

Standard sulphide flotation with high recoveries

Produces clean, high-grade zinc & lead-silver concentrates



# Oposura development time-line

- Acquired: ✓ August 2017
- Mineral Resource: ✓ July 2018
- PEA / Scoping Study: ✓ October 2018
- Resource update: ✓ May 2019
- Small-scale mining: ✓ ongoing
- Feasibility Study: Q3 2020
- Large-scale production: Q3-Q4 2021

# Cash flow in Q4 2019

Fully funded & permitted small-scale operation

Production: ~3,000tpm @ 15%-20% Zn+Pb

Open pit & underground contract mining

Toll processing & concentrate sales

Will fund Feasibility Study into large-scale mining



# Oposura open pit mine







Mining of massive sulphides: +40% ZnEq

# Positive & exciting future for Azure

- Grow Alacrán silver & gold resources
- Follow-up Alacrán silver and gold early-stage targets
- Develop cash flow from small-scale mining at Oposura
- Oposura DFS to be completed in Q3 2020
- Full-scale mining & processing at Oposura by mid-2021





# Thank you



For enquiries, please contact:  
Tony Rovira, Managing Director  
[admin@azureminerals.com.au](mailto:admin@azureminerals.com.au)