

MINAURUM GOLD INC



Discovery Generator.

TSXV: MGG OTCQX Best Market: MMRGF

VENTURE
50
2019

Forward Looking Statement

Some of the statements contained in this presentation are forward-looking statements. Forward-looking statements are not historical facts and are subject to a number of risks and uncertainties beyond the Company's control, including, but not exclusively, statements regarding potential mineralization, exploration results, completion of work program and studies, and future plans and objectives of the Company. Resource exploration, development and operations are highly speculative, characterized by a number of significant risks, which even a combination of careful evaluation, experience and knowledge may not eliminate, including, among other things, unprofitable efforts resulting not only from the failure to discover mineral resources but from finding mineral deposits which, though present, are insufficient in quantity and quality to return a profit from production.

Qualified Person: Mr Stephen R Maynard, M.S., C.P.G., has acted as the qualified person as defined in National Instrument 43-101 for this disclosure and supervised the preparation of the technical information in this release.

Guerrero Gold Belt Global Resources taken from Goldcorp Website and Torex Gold Website. Guerrero Ventures and Biricu Project information taken from Guerrero Ventures website.

A Mexican Discovery Generator

Minaurum is a **Mexico-focused explorer** creating **shareholder wealth** through the **discovery** and **development** of **new district-scale silver and gold discoveries**.

- **Proven Mine Finders**
 - Discovered deposits in Mexico containing over 300 million ounces Silver and 10 million ounces Gold
- **Discovery Generator Model**
 - Incubator for Mineral Discoveries
 - 1) **Acquire** district-scale projects
 - 2) **Advance** through drilling
 - 3) **Monetize** – Sell or spin out into “Spinco” pure-plays
- **Strong Capital Structure**
 - High net worth shareholders, precious metal funds and family offices comprise over 70% of the shareholder base, management own 7%
 - \$6 million Cash



Our Track Record



Dr. Peter Megaw, Co-founder, Senior Geologist Director

- Discovered MAG Silver's 250 Moz Juanicipio Silver Deposit,
- Discovered MAG Silver's Cinco de Mayo Ag-Pb-Zn-Cu-Au CRD
- Discovered the Platosa Silver Mine



David M. Jones, Director, Senior Geologist

- Discovered Goldcorp's 16 Moz Gold Los Filos Deposit
- Member of team that discovered Kinross' 2 Moz Buckhorn Gold Deposit
- Discovered Gold Resource Corp's Switchback vein system at El Aguila



Gerald Rayner, Senior Consulting Geologist, Technical Committee

- Discovered the 2.9 Mt copper – 7 Moz Gold OK Tedi Mine



Michael Williams, Director

- Cofounder, \$145 M acquisition by Kinross Gold

Management & Directors

Darrell Rader, BBA, President & CEO, Director

Mining Financier and operator, has raised over \$100 million for mineral exploration and development.

Stephen Maynard, M.S., V.P. Exploration

Part of team that discovered 3 Moz gold Cerro de San Pedro deposit in Mexico.

Cale Moodie, CA, Chief Financial Officer

Previously CFO of Underworld Resources (acquired by Kinross Gold) and Sierra Geothermal (acquired by Ram Power).

David M. Jones, M.S., Senior Geologist & Director

Los Filos and Independencia gold deposits in the Guerrero Gold Belt.

Dr. Peter Megaw, Ph.D, C.P.G., Director

MAG Silver's Juanicipio and Cinco de Mayo Deposits, and Excellon Resources' Platosa Mine.

David Medilek, P.Eng., CFA, Director

VP Business Development K92 Mining. Previously mining engineer at Barrick Gold, Investment banking and research at Cormark, Macquarie.

Michael Williams, Director

Co-founder Underworld Resources, acquired by Kinross for \$142M.

Lawrence Talbot, LLB, Director

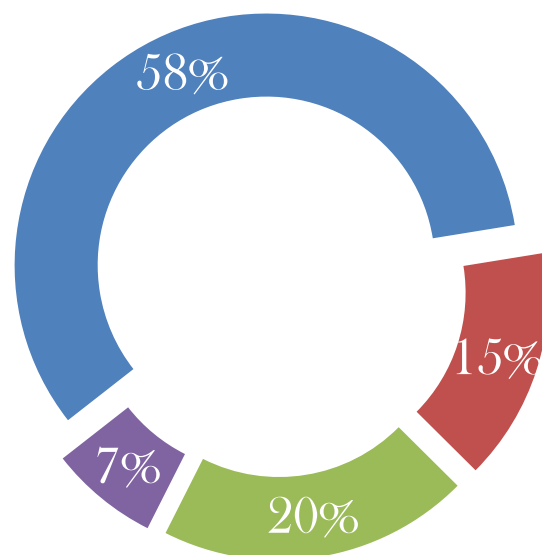
Balmoral Resources Ltd., International Tower Hill Mines.

Gerald Rayner, P.Eng, Technical Committee

Kennecott 7 Moz Gold OK Tedi Mine.

Capital Structure

- High Net Worth Investors
- Precious Metals Funds
- Retail
- Management



All Funds in CDN \$

Symbol	MGG TSX.V MMRGF OTCQX 78M FRANKFURT
Cash	~\$6M
Market Cap	~\$156M
Share Price	\$0.50
Shares	313,664,046
Options (Price: \$0.10 - \$0.45)	7,920,000
Warrants (Price: \$0.65)	8,027,792

District-Scale Project Portfolio





Flagship Project

Alamos Silver Project

SOUTHERN SONORA STATE



Alamos

- 37,317-ha land package
- Wide, high-grade epithermal vein system
- Historical production of approximately 200 M oz Ag
- First time the project has ever been consolidated and explored using modern methods
- Borders Piedras Verdes, a 50,000 tpd open pit and 4,500 tpd underground Copper-Silver Mine

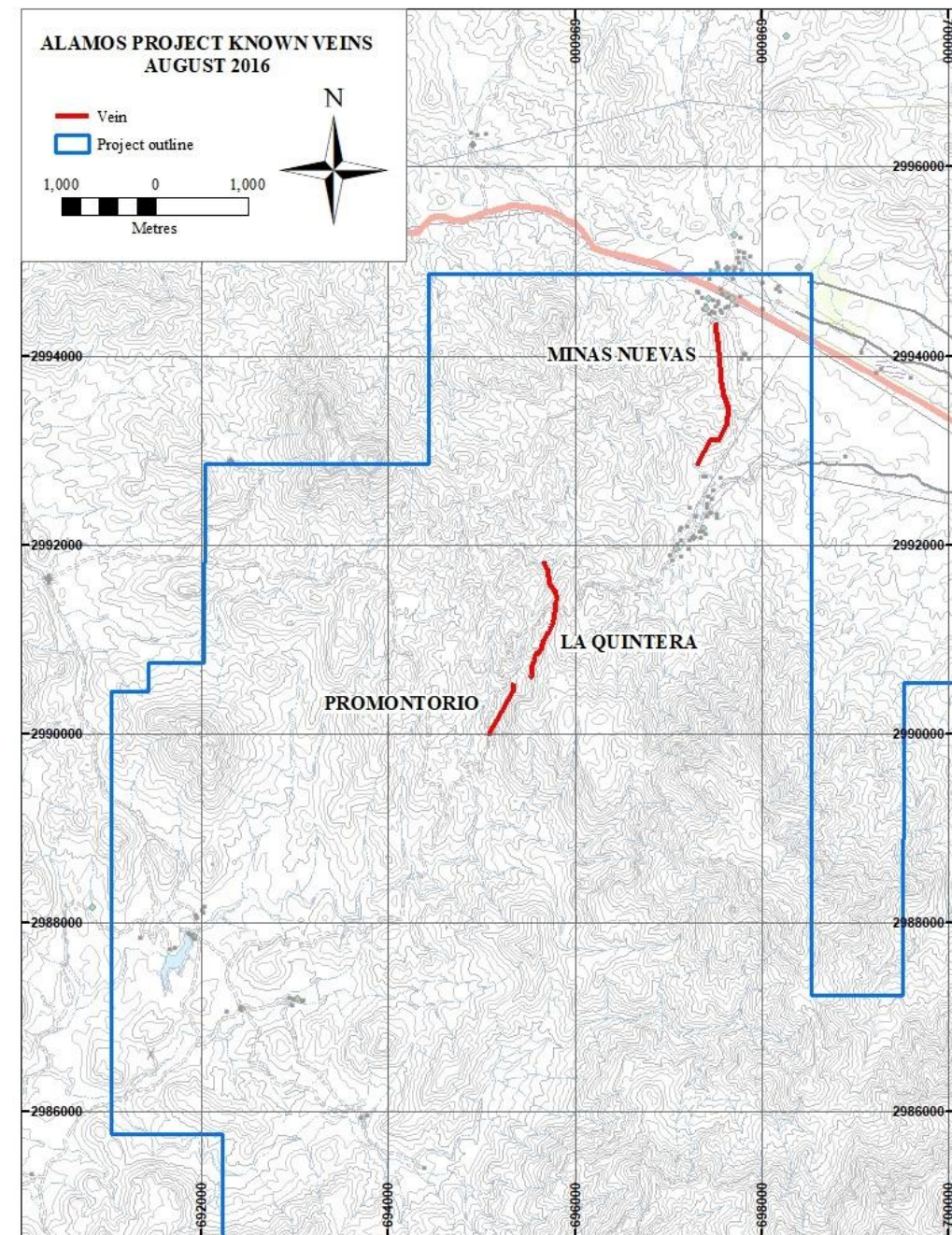


Dr. Peter Megaw, stated “The Quintera vein swarm produced the majority of the silver mined in the historic Alamos Silver Camp and has somehow eluded systematic exploration for over 100 years. We look forward to having the first crack at applying modern epithermal vein exploration concepts to this system.”

Alamos

AUGUST 2016

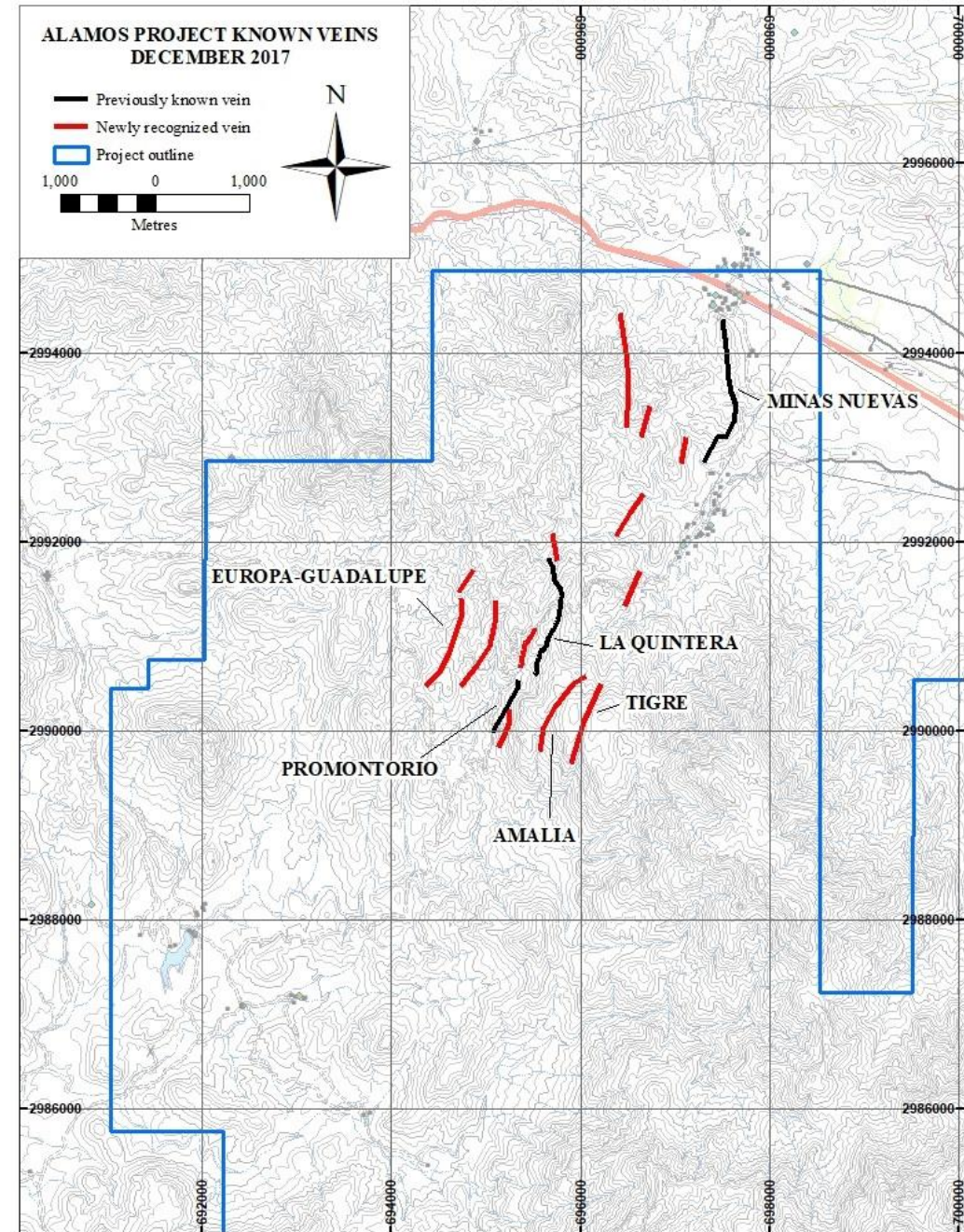
- Known Vein Extent Upon Acquisition
- ALAMOS MINING DISTRICT produced over 200 M oz from three mines located on Minas Nuevas, Quintera and Promontorio vein systems between 1680-1930
- **A MAJOR HISTORICAL SILVER PRODUCER**



Alamos

DECEMBER 2017

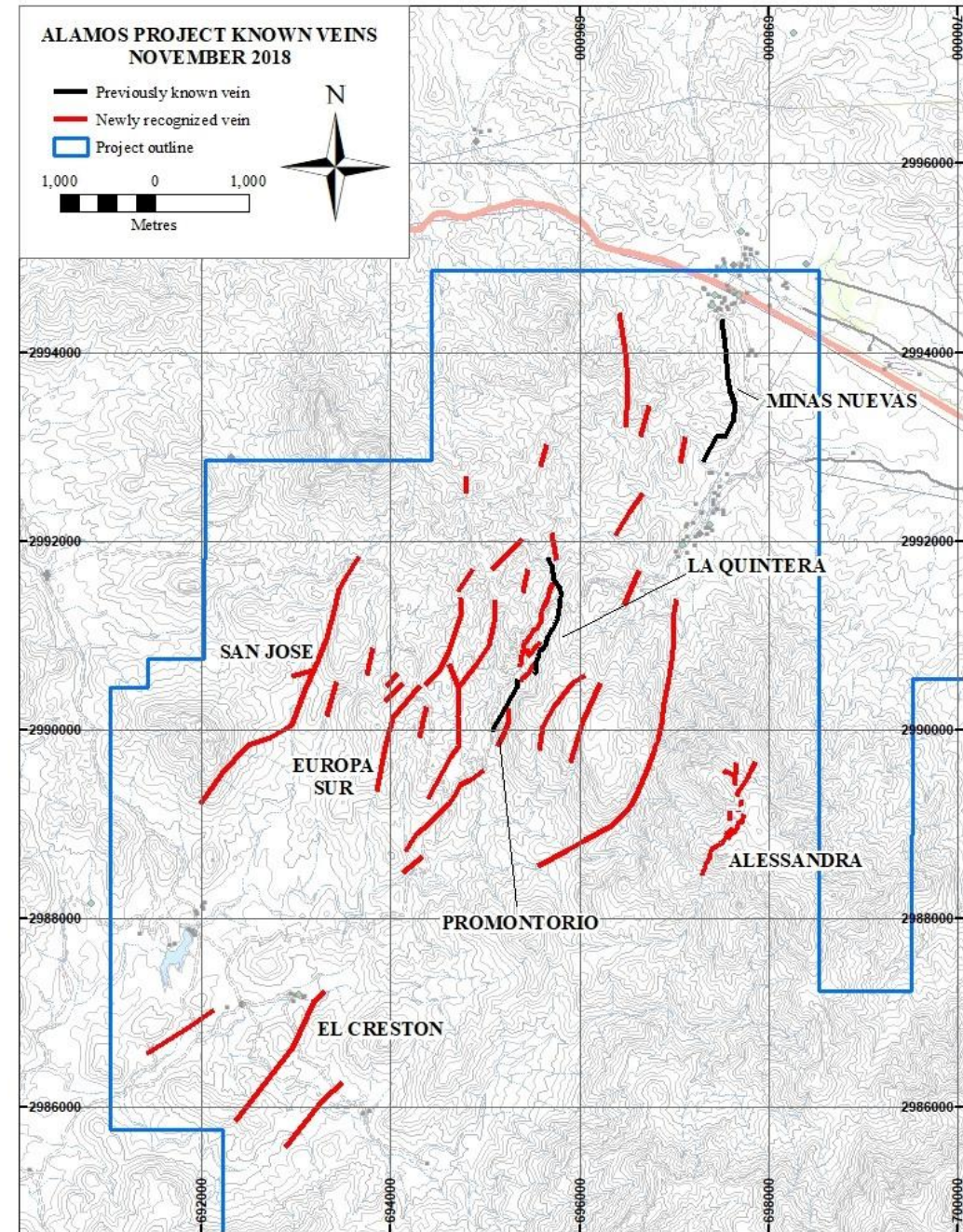
- Focus is on discovering new silver vein systems in the district that were not historically mined
- Geological mapping and sampling reveal additional vein systems



Alamos

JANUARY 2019

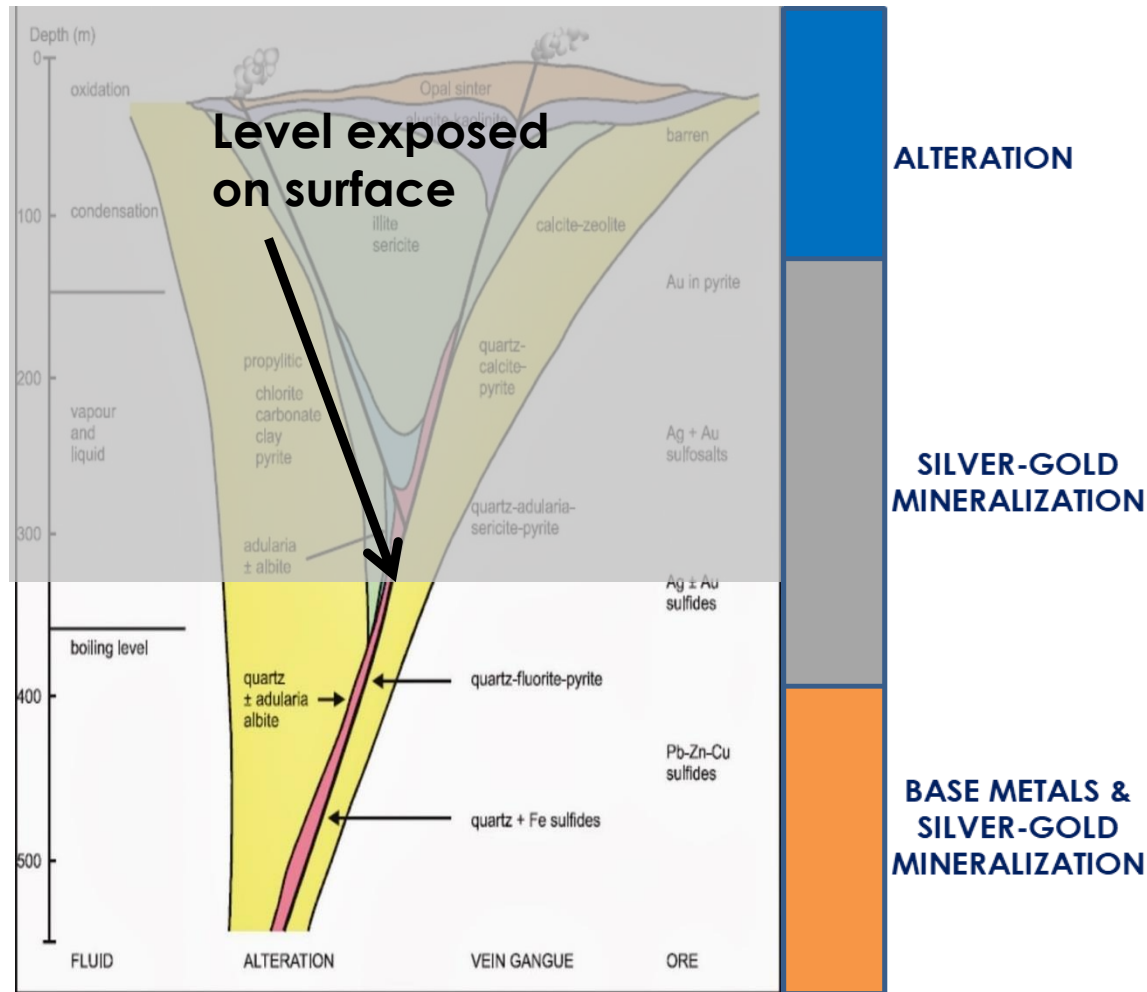
- Mapping and Sampling Continue to yield new vein systems
- Footprint is now 10km x 5.5km



24 Vein Systems Identified (length)

1. Europa Guadalupe -**2.5 km**
2. Promontorio – **1 km**
3. Nueva Europa – **2.1 km**
4. Minas Nuevas – **1.5 km**
5. Amalia – **980 m**
6. Tigre – **1 km**
7. Pulpito - **1 km**
8. Coteria - **800 m**
9. Ana – **3.4 km**
10. Travesia – **880 m**
11. San Manuel - **1.1 km**
12. El Creston - **1.9 km**
13. Carrera - **950 m**
14. San Jose – **2.5 km**
15. Santa Rosa – **500 m**
16. La Quintera – **1.4 km**
17. Promontorio Sur– **1.3 km**
18. Alessandra – **1.1 km**
19. Europa Sur – **1 km**
20. Rosario - **500 m NEW**
21. La Dura Oeste – **550 m NEW**
22. La Dura – **700 m NEW**
23. Tijera – **750 m NEW**
24. Salvial – **1.8 km NEW**

Alamos District and Buchanan Model (1981)

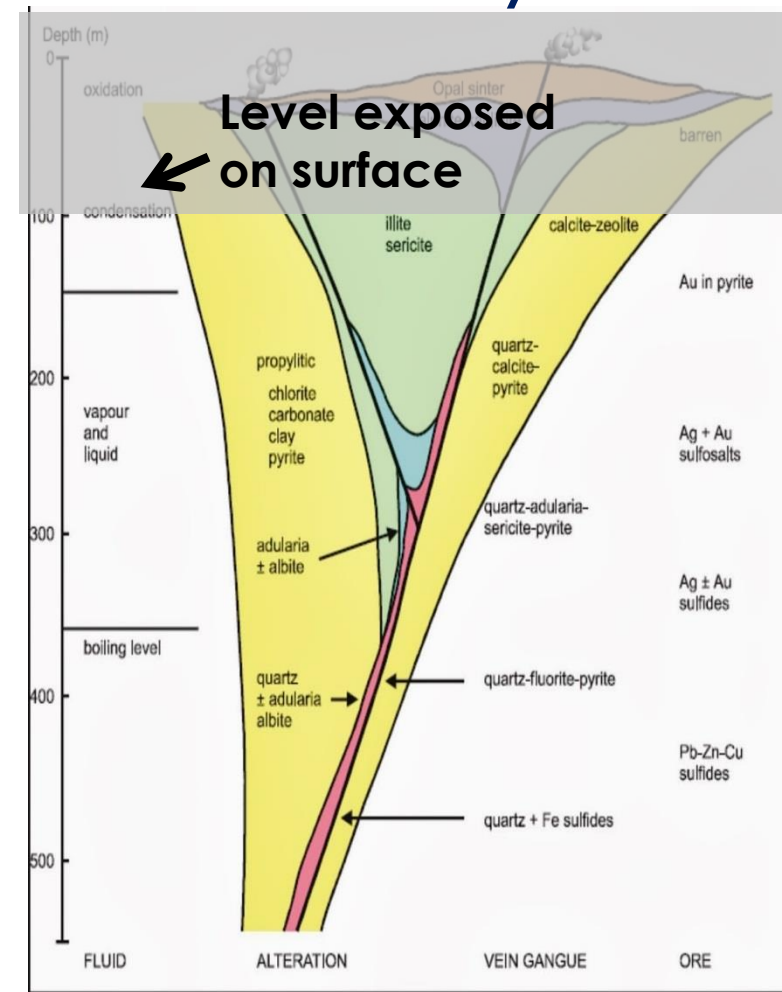


Up Key

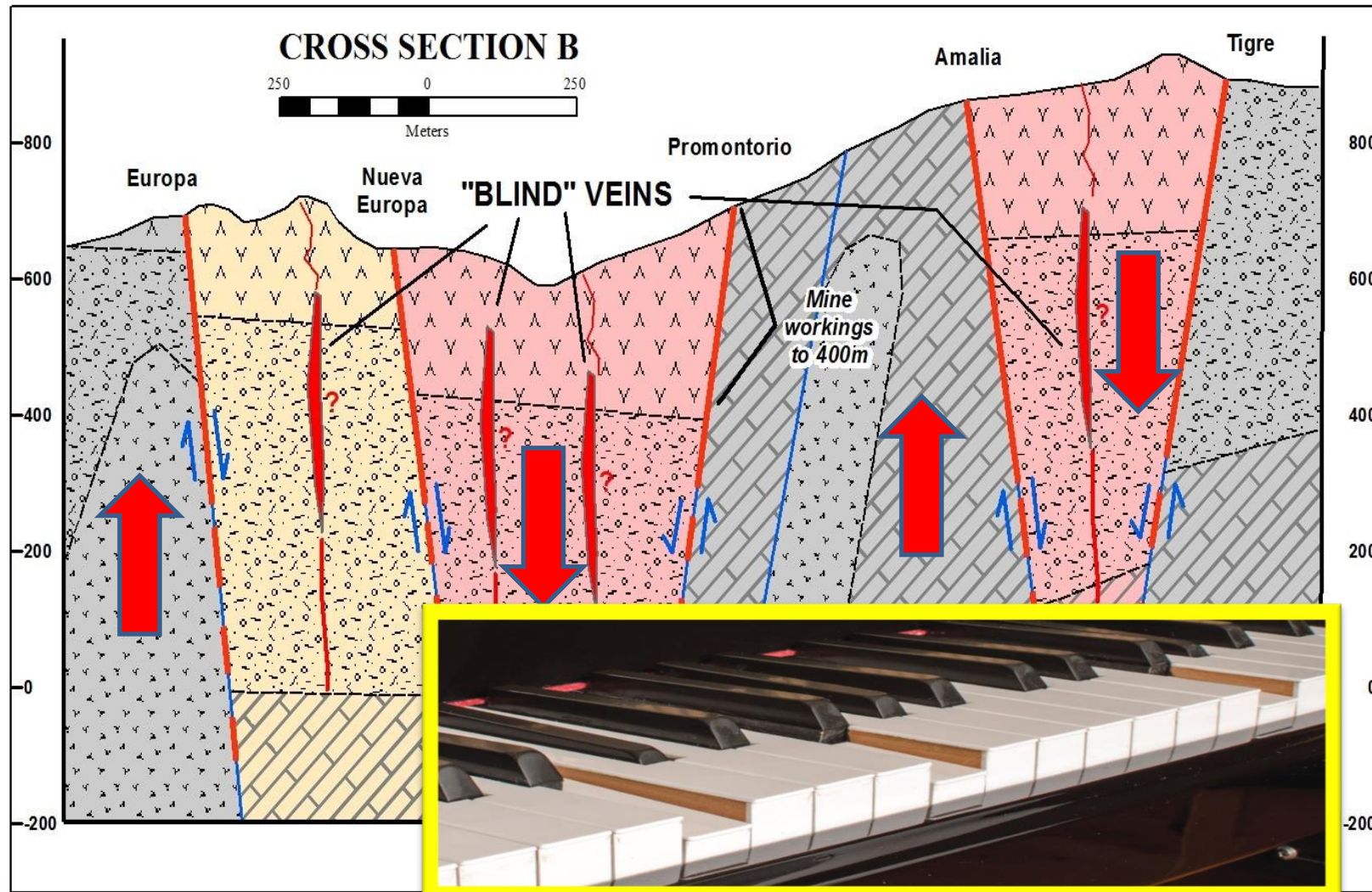
La Quintera, Promontorio
and The Gap Targets

Europa-Guadalupe, Nueva Europa,
Amalia and San Jose Targets

Down Key

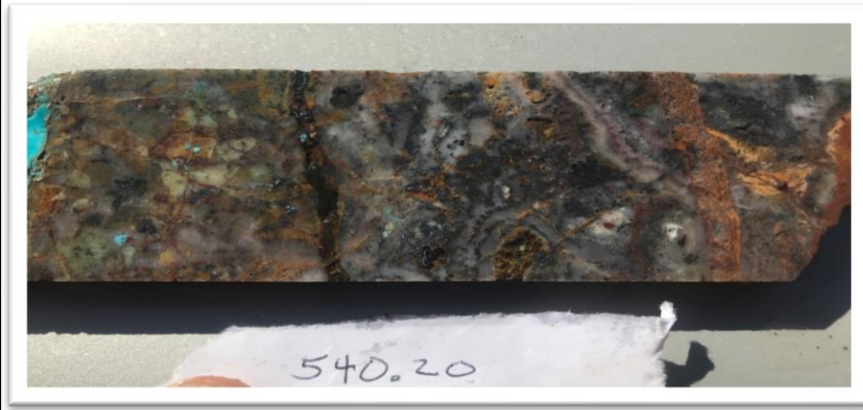
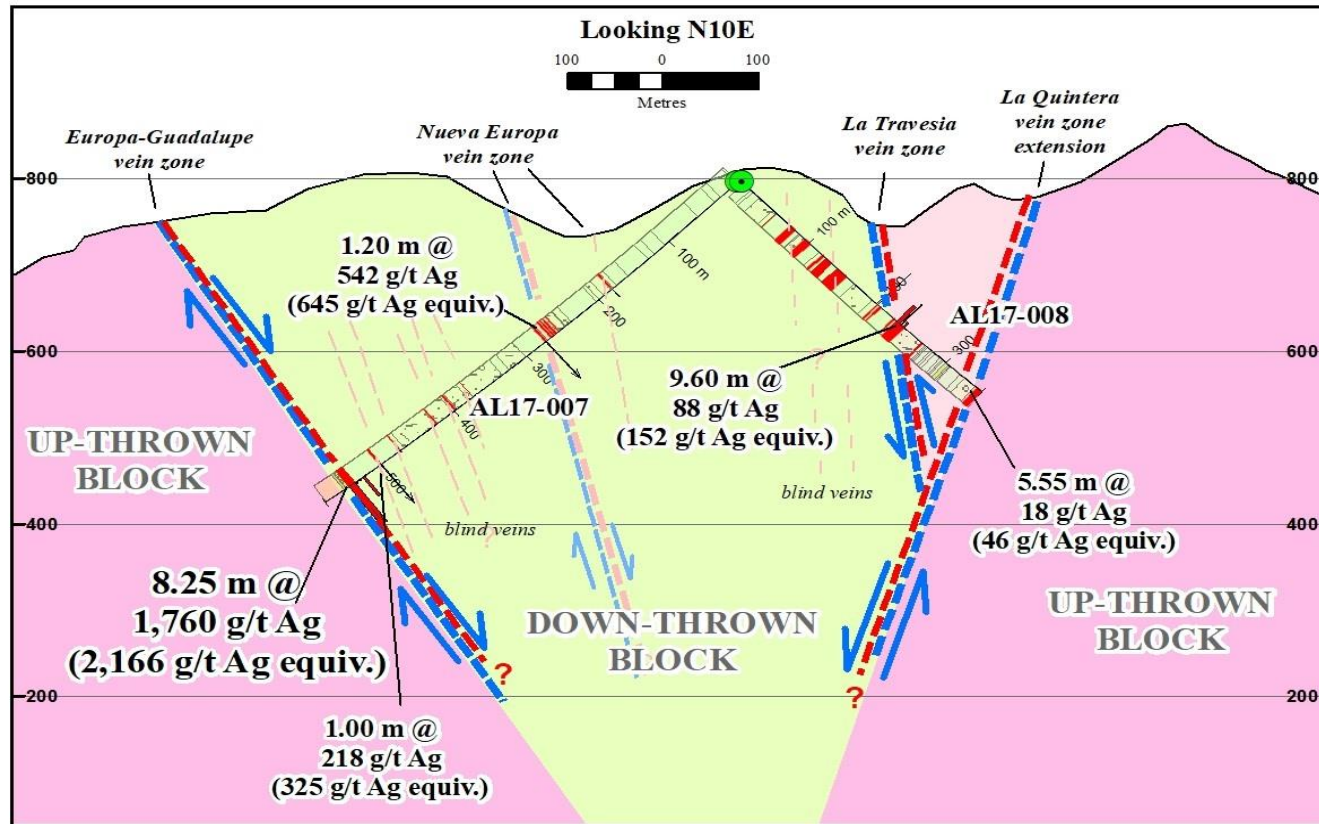


Alamos Geological Model – Piano Key Model



'Proof of Concept'

The Europa-Guadalupe Discovery



- Europa-Guadalupe intersected 325m below surface
- Hole cut 8.25 metres of 1,760 g/t (57 oz/t) silver, 1.6% copper, 1.5% lead, and 2.6% zinc.
- True width estimated at 90%.

*Ag Equivalent is reported for comparison only, with no assumptions regarding metal recovery or smelter payments. Prices used are: Au: \$1,321.00/troy ounce; Ag: \$16.92/troy ounce; Cu: \$3.20/pound; Pb: \$1.17/pound; and Zn \$1.54/pound (all amounts in U.S. dollars).

Alamos – Vein Inventory Drilled

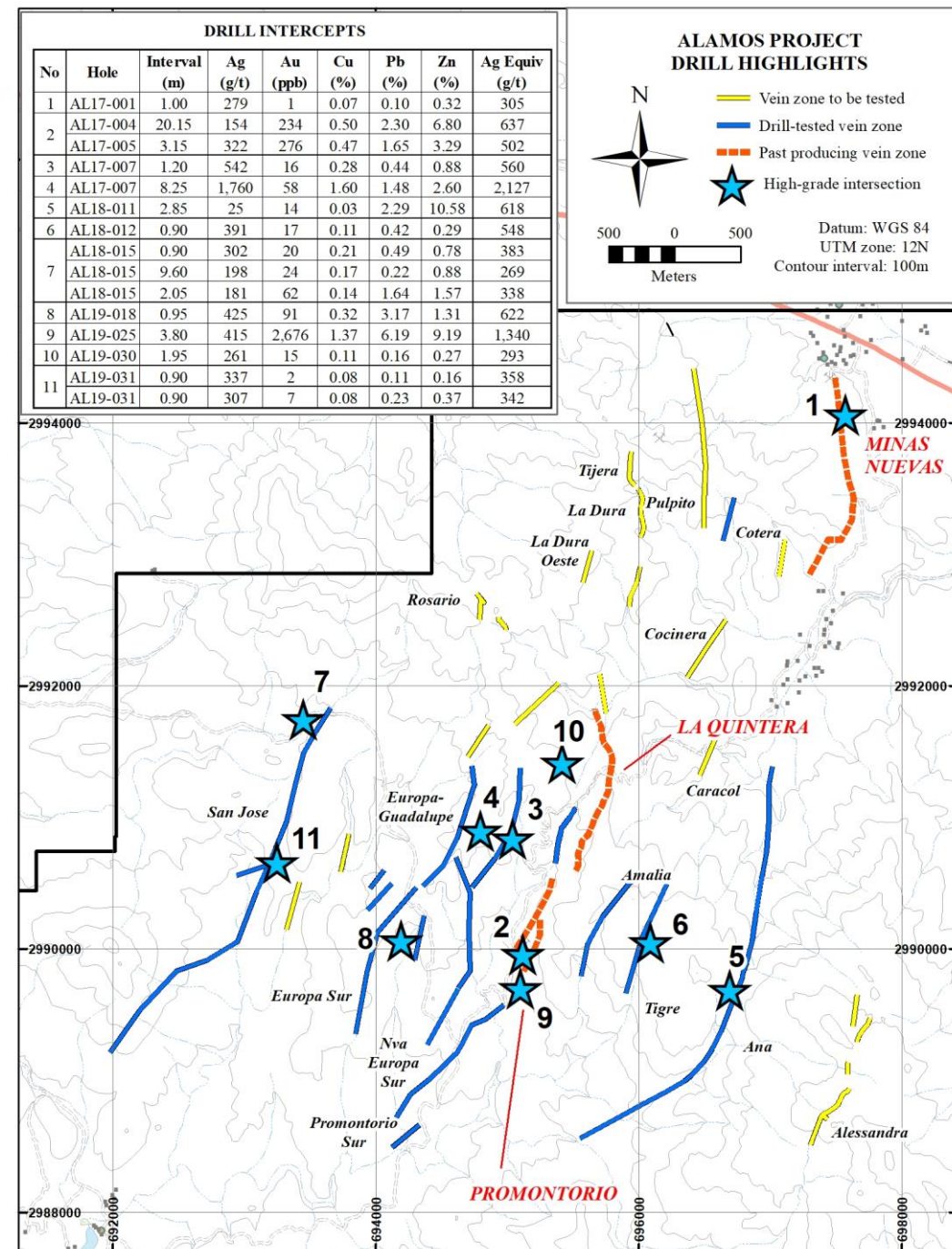
#	Vein System	Known Strike Length (m)	Tested	# of holes	Best Drill Intercept	Comment
1	Minas Nuevas	1500	yes	3	17.95 m @ 96 g/t Ag (AL17-001)	Historical high-grade producer
2	Promontorio	1000	yes	5	20.15 m @ 154 g/t Ag, Au, 0.5% Cu, 2.3% Pb, 6.8% Zn (AL17-004)	Historical high-grade producer
3	San Jose	2500	yes	5	9.60 m @ 198 g/t Ag , 0.22% Pb, 0.88 % Zn (AL18-015)	High-grade silver on Surface
4	Europa-Guadalupe	2500	yes	1	8.25 m @ 1,760 g/t Ag, 1.60 % Cu, 1.48% Pb, 2.6 % Zn (AL17-007)	True thickness
5	Nueva Europa	2100	yes	1	1.20 m @ 542 g/t Ag , 0.28% Cu, 0.44% Pb, 0.88% Zn (AL17-007)	Occurs in down-thrown block
6	Amalia	980	yes	1	1.30 m @ 1.73% Pb, 1.99% Zn (AL18-012)	Occurs in down-thrown block
7	Tigre	1000	yes	1	0.90 m @ 391 g/t Ag , 0.42% Pb, 0.29% Zn (AL18-012)	High-grade silver on surface
8	Ana	3400	yes	1	2.85 m @ 25 g/t Ag, 2.29% Pb, 10.58% Zn (AL18-011)	High-grade lead/zinc on surface
9	Travesia	880	yes	1	9.60 m @ 88 g/t Ag, 0.37% Pb, 0.33% Zn (AL17-008)	Silver wide-width on surface
10	El Creston	1900	yes	1	0.20 m @ 20 g/t Ag, 0.85% Cu (AL18-014)	Zone of veinlets is > 100m wide
11	Europa Sur	1000	yes	2	0.95 m @ 425 g/t Ag, 3.17% Pb 1.31% Zn	
12	Promontorio Sur	1300	yes	2	0.20 m @ 304 g/t Ag	Faulted-off extension of Promontorio
13	La Quintera	1400	yes	1	0.50 m @ 124 g/t Ag	Historical high-grade producer

Alamos – Vein Inventory To Be Drilled

#	Vein System	Known Strike Length (m)	Tested	# of holes	Best Drill Intercept	Comment
14	Cotera	800	no			High-grade silver on surface
15	Alessandra	1100	no			Grades in excess of 3 oz Gold per tonne on surface
16	Pulpito	1000	no			High-grade Silver Vein
17	San Manuel	1100	no			Large Surface Exposure
18	Santa Rosa	500	no			Visible Copper Mineralization on Surface
19	Salvial	1800	no			High-Grade Gold on Surface
20	Carrera	950	no			Copper on Surface
21	Rosario	500	no			2-m chip sample assayed 675 g/t Ag, 1.0% Cu
22	La Dura Oeste	550	no			Grab sample assayed 3.4% Cu
23	La Dura	700	no			0.5-m chip sample assayed 123 g/t Ag and 2.1% Cu
24	Tijera	750	no			Silver-Copper on Surface

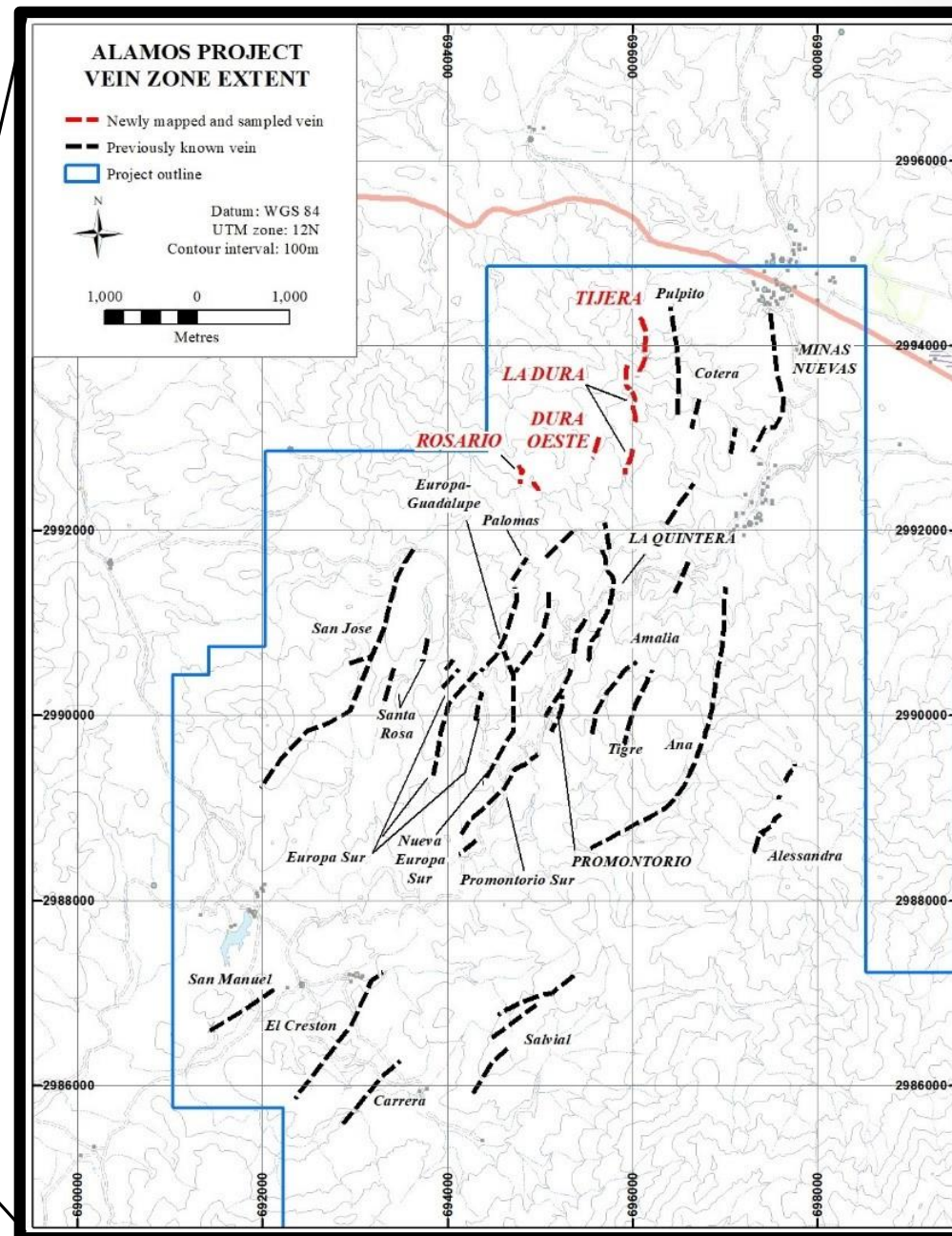
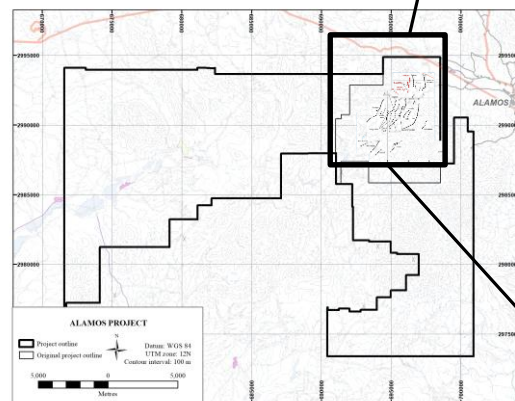
2019 Drill Program Testing New Targets

- Two Drill Rigs at Alamos, drill program to continue through end of year
- Focused on testing new targets to determine size of District
- Significant exploration success; Drilling has hit productive veins in 10 out of the 13 vein systems drilled to date



New Vein Discoveries Continue...

- Rosario, Dura Oeste, La Dura & Tijera vein systems discovered recently
- Silver-copper mineralization at Rosario demonstrates potential for high-grade mineralization along a new structural direction
- Selected samples include: 2m of **675 g/t Ag, 1% Cu** and **0.9% Pb**
- **ONLY A SMALL PORTION OF THE PROJECT HAS BEEN TESTED YET**



District-Scale Project Portfolio

Project	Adelita	Santa Marta	Aurena	Taviche	Guerrero Gold Belt (Vuelcos del Destino & Biricu)
Commodity	Silver -Copper; CRD-Porphyry	Gold -Copper; VMS	Gold ; Skarn, VMS	Silver -Gold; Epithermal Vein	Gold ; Skarn-Porphyry
Nearest Mining Operation	<ul style="list-style-type: none"> Borders Pan American's past-producing Alamo Dorado silver mine Cobre Del Mayo's Piedras Verdes copper mine 	<ul style="list-style-type: none"> Fortuna Silver's San Jose Mine Gold Resource's El Aguila Mine 	<ul style="list-style-type: none"> Fortuna Silver's San Jose Mine Gold Resource's El Aguila Mine 	<ul style="list-style-type: none"> Borders Fortuna Silver's San Jose Mine 	<ul style="list-style-type: none"> Completely surrounded by; Leagold Mining's Los Filos & Bermejil deposits, Torex Gold's El Limon/Guajes mine and Media Luna deposit, Agnico Eagle's Morelos Sur and Osisko Gold Royalties
Development Stage	4,900 m drill program completed	Drill Ready	7,062 m drill program completed	7,987 drill program completed	Vuelcos: Drill Ready Biricu: 4000m drilled
Exploration	<ul style="list-style-type: none"> 16.15m of 1.97% Cu, 78g/t Ag 47.64m of 1.05% Cu, 46g/t Ag 105m of 1.03% Cu, 36g/t Ag 69m of 1.29% Cu, 33 g/t Ag 21m of 1.41% Cu, 72g/ tAg 	<ul style="list-style-type: none"> 70,000 tonnes historically produced grading 4% Cu and 3 g/t Au. Sampling: 1.1% copper over 25 meters 	<ul style="list-style-type: none"> 43.50 m of 1.01 g/t gold 20.50 m of 1.44 g/t gold 24 m of 1.0 g/t gold 29m of 2.0 g/t gold 	<ul style="list-style-type: none"> 34m of 262 g/t silver 36.6m of 292 g/t silver 19m of 233 g/t silver 8.35m of 2.05 g/t gold 	<p>Vuelcos: Largest un-drilled intrusive complex in GGB measuring 12 square km</p> <p>Biricu:</p> <ul style="list-style-type: none"> 27m of 1.07 g/t gold

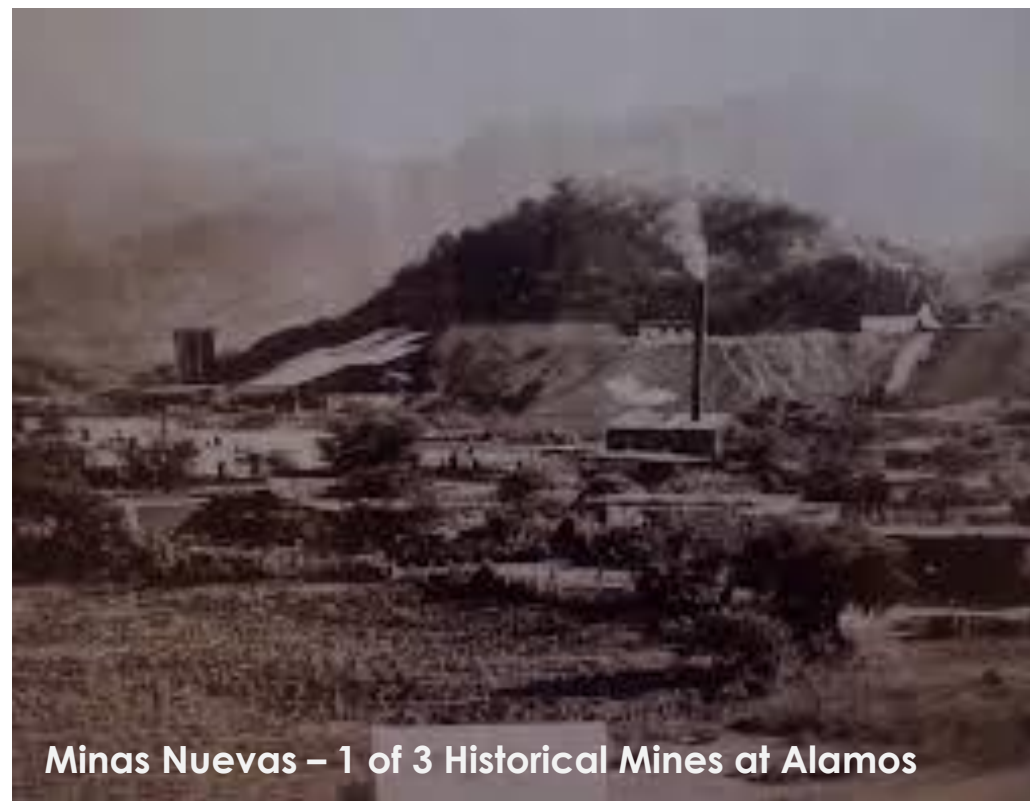
Catalysts

- **Alamos Silver Project**

- ✓ Drill program to continue
- ✓ Ongoing surface generative work focused on discovering, mapping and sampling new vein systems
- ✓ Commence reconnaissance of newly expanded project. Recently doubled the size of Alamos

- **Portfolio Developments**

- ✓ Project Acquisitions – Actively pursuing low-cost high-impact acquisitions
- ✓ Advancing Santa Marta through drill permitting



Minas Nuevas – 1 of 3 Historical Mines at Alamos



MINAURUM GOLD INC



2300-1177 West Hastings Street Vancouver BC V6E 2K3
www.minaurum.com [Minaurum YouTube Channel](#)

Investor Relations Manager, Sunny Pannu

778.330.0994 pannu@minaurum.com