

CORPORATE PRESENTATION  
September 2019



# Newrange Gold Corp.

*Where **Exploration** Intersects **Discovery***

---

[www.newrangegold.com](http://www.newrangegold.com)

TSXV: **NRG**

OTCQB: **NRGOF**

FSX: **X6C**



# Forward Looking Statement

---

*Except for historical information contained herein, this presentation contains forward looking statements including but not limited to comments regarding predictions and projections. Forward-looking statements address future events and conditions and therefore involve inherent risks and uncertainties. Although Newrange Gold believes that such expectations are reasonable, there can be no assurance that such expectations will prove to be correct, and therefore actual results may differ materially from those currently anticipated in such statements. You are cautioned not to place undue reliance on any such forward looking statements, whether made in this presentation or in any question and answer period related to this presentation.*

# Newrange Gold – Overview

- High Grade Gold District
- Top-Tier Management
- World Class Address
- Excellent Infrastructure
- Exceptional Metallurgy





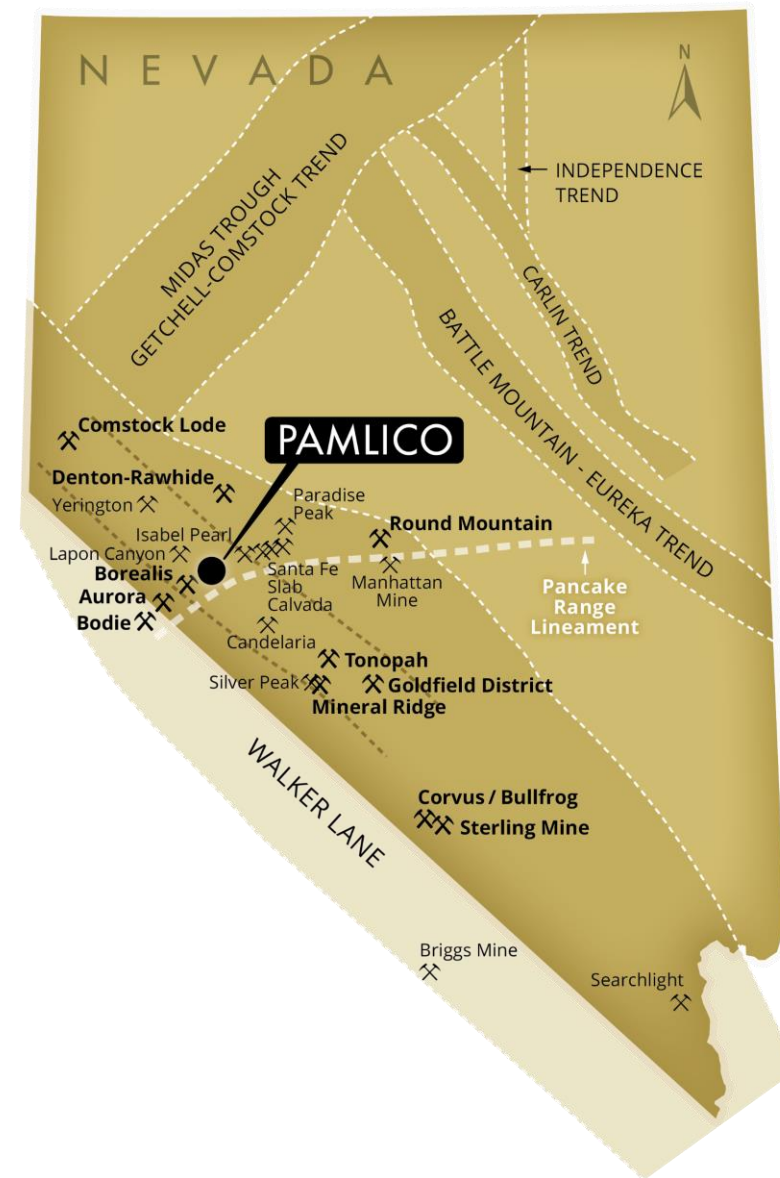
# Nevada – ‘Elephant Country’

## Nevada

- 5th largest gold producer & most desirable mining jurisdiction in the world
- 5.6Moz of gold produced in 2018
- 169.1Moz of gold produced from 1835-2018

## Walker Lane

- NW-SE oriented structural trend hosting many historic and current gold and silver districts and mines
  - Intersection with E-W trending Pancake Range Lineament may be important
- Over 53Moz gold, 519Moz silver produced



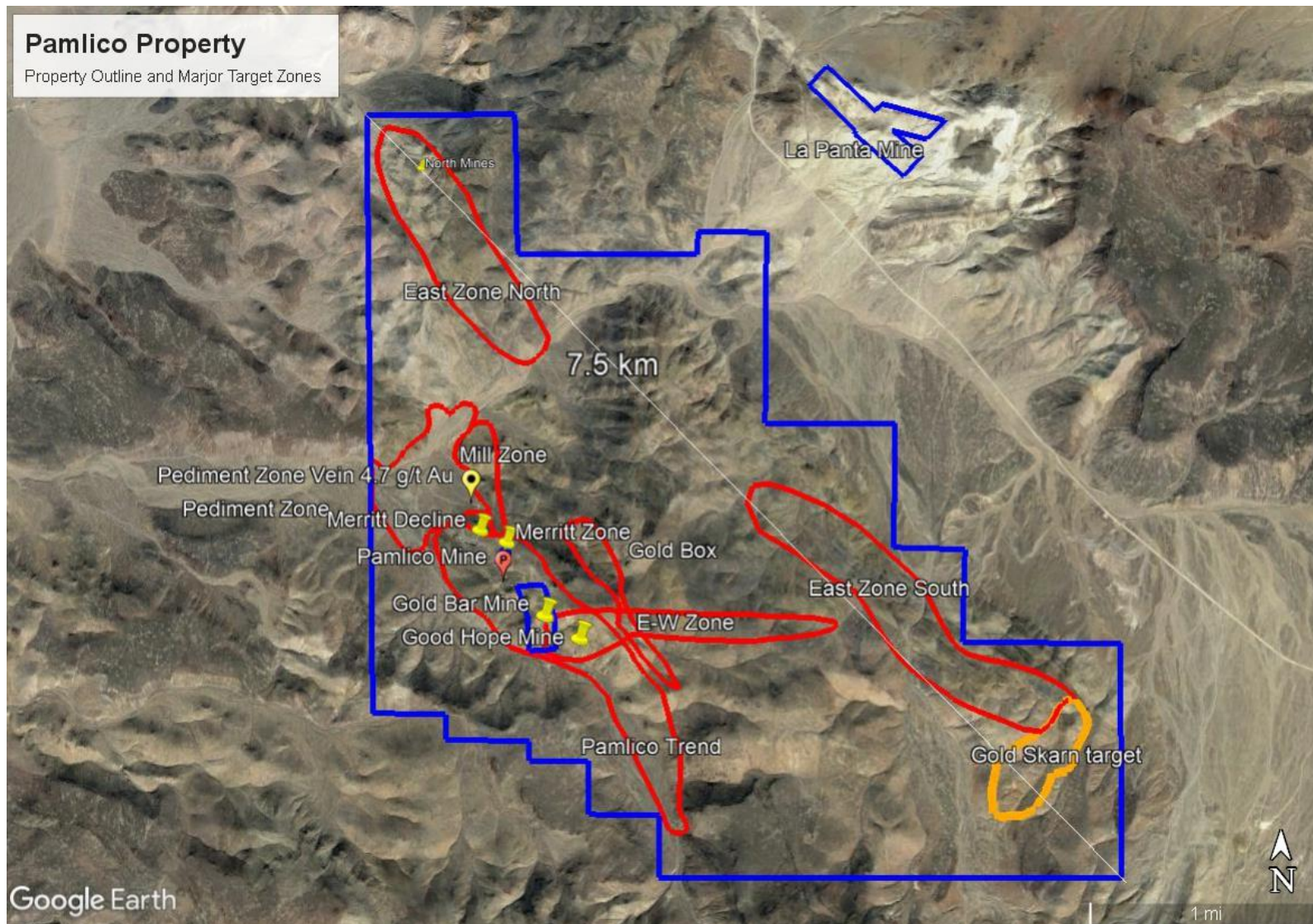
# Pamlico Project – A New Discovery in an Old District



- New high-grade, volcanic hosted, near surface, oxide gold discovery in legendary district (1880's-1920's)
- Unique, almost unexplored opportunity - in private hands since 1896
- Newrange has option to earn 100%
- Exceptional infrastructure
- District scale property (1670 hectares)
- Multiple targets yet to be tested



# District Scale Potential – Target Map



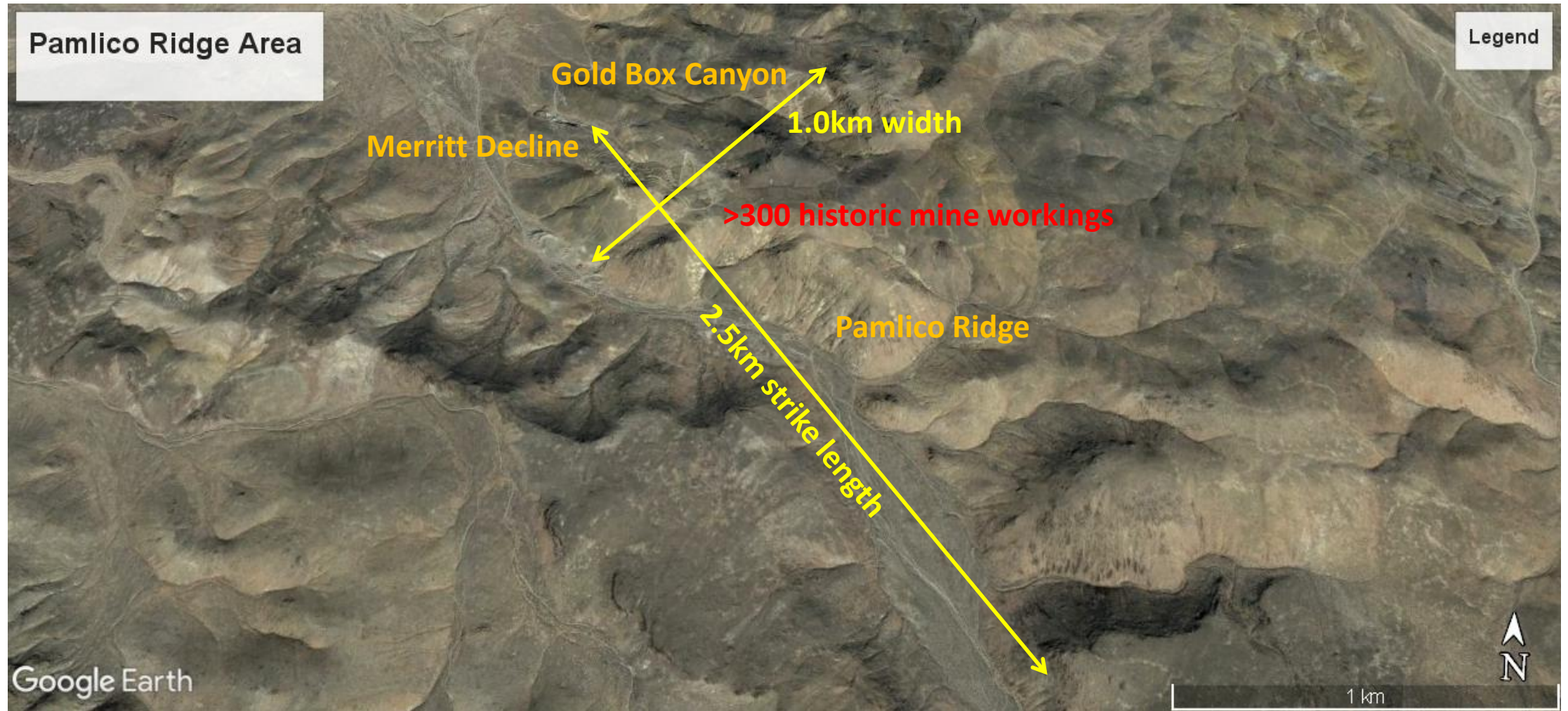
- Merritt Area (39 of 47 holes to date)
  - Multiple Zones
- Pamlico Ridge (8 of 47 holes)
  - 2.5 km strike length / 300+ old mine workings

## Other prime targets being readied:

- Pediment Area
  - 1.3 km x 0.7 km zone / 4.7 g/t Au saw cut sample from only outcrop
- Gold Box Canyon
  - 1.5 km strike / Up to 98 g/t Au in outcrop
- East Zone North
- East Zone South
  - Up to 5.0 g/t Au in outcrop
- Gold Skarn Zone

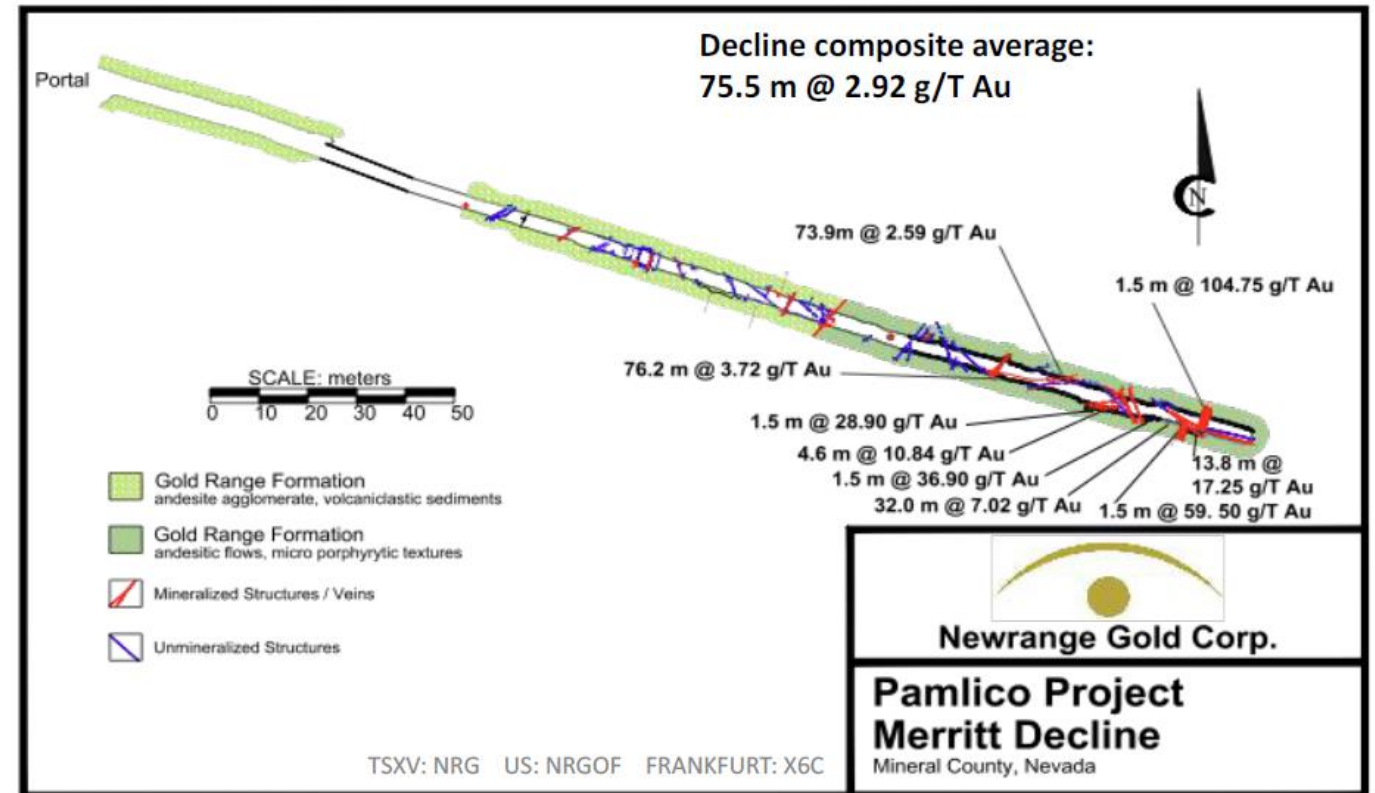


# Pamlico Ridge Area



- Known mineralization covers an area of 2.5 X 1.0 kilometres & is open in all directions

# Merritt Decline Sampling



- 100 metres, continuous saw cut channel sample interval
  - Composite avg.: **75.5 metres @ 2.92 g/t Au**
  - High-grade interval: **13.8 metres @ 17.25 g/t Au**
- **Permits in place to take 1,000 ton bulk sample for geotechnical assessment & large scale metallurgical testing**



# Pamlico Drilling

Discovered multiple, new high-grade gold zones in Merritt Area

## **Near surface, oxide intercepts – Highlights:**

- DH P17-08: **9.1m of 28 g/T Au** (incl. 1.5m of 85 g/T)
- DH P17-10: **6.1m of 98 g/T Au** (incl. 1.5m of 341 g/T)
- DH P17-17: **4.6m of 44 g/T Au** (incl. 0.8m of 244 g/T)

Discovered “halo” disseminated/stockwork bulk tonnage potential in Merritt Area & Pamlico Ridge

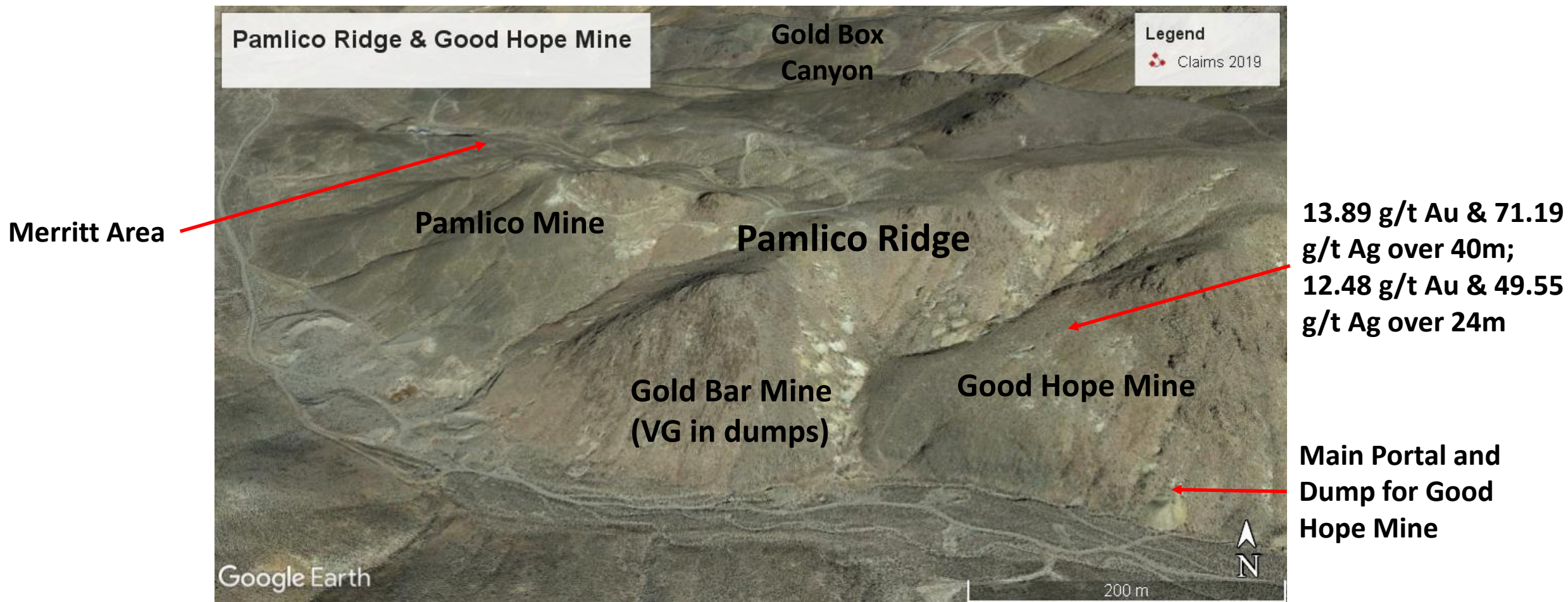
## **Near surface, oxide “stockwork” intercepts – Highlights:**

- DH P17-26: **28.2m @ 4.54 g/T Au** (from 19.8m)
- DH P17-33: **53.4m @ 2.36 g/T Au** (from surface)
- DH P17-26: **39.6m @ 1.48 g/T Au** (from 85.4m)
- Decline – Continuous saw cut channel sampling: **75.5m @ 2.92 g/T Au** (from face)

Discovered previously unknown stockwork/disseminated gold mineralization at depth beneath lower rhyolite of Middle Unit in deeper lithic tuff.

**Results indicate potential for low grade deposit with high grade ‘sweeteners’**

# Good Hope Mine Underground Sampling



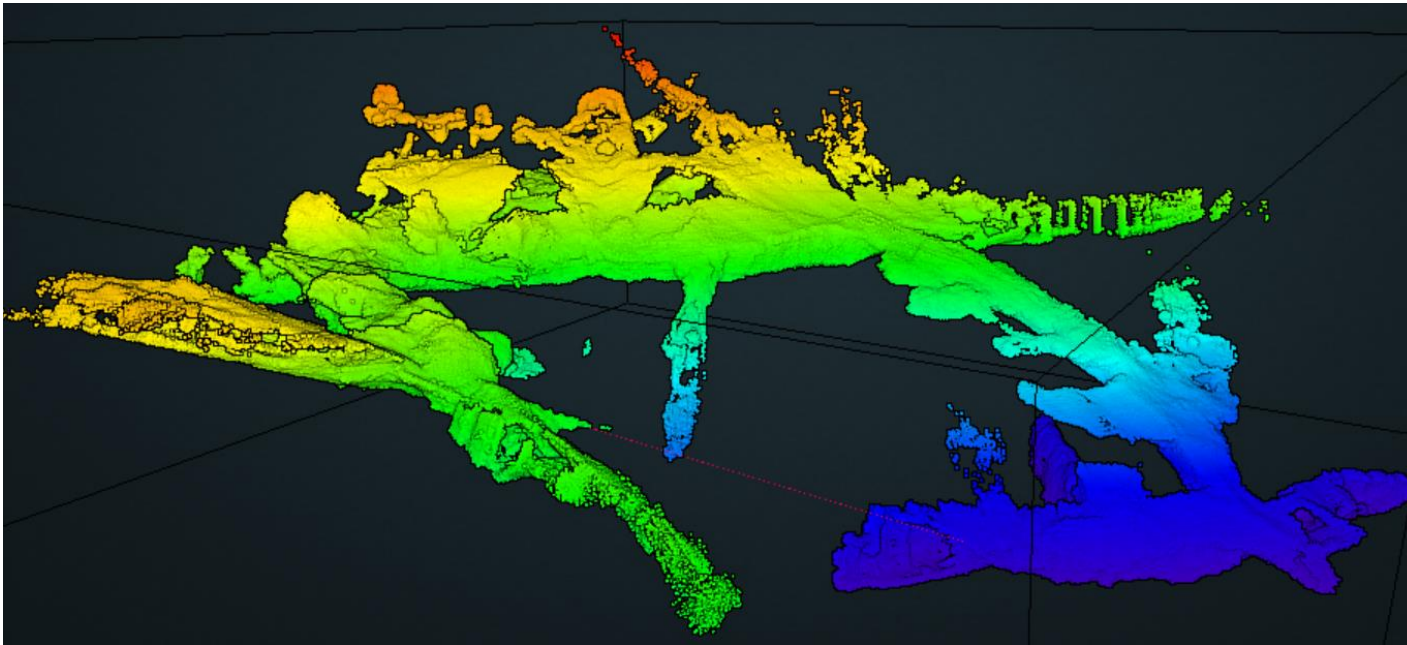
- Underground sampling re-discovered high grade gold-silver mineralization in upper levels of Good Hope Mine



# Recent and Ongoing Exploration Programs

## Underground Surveying

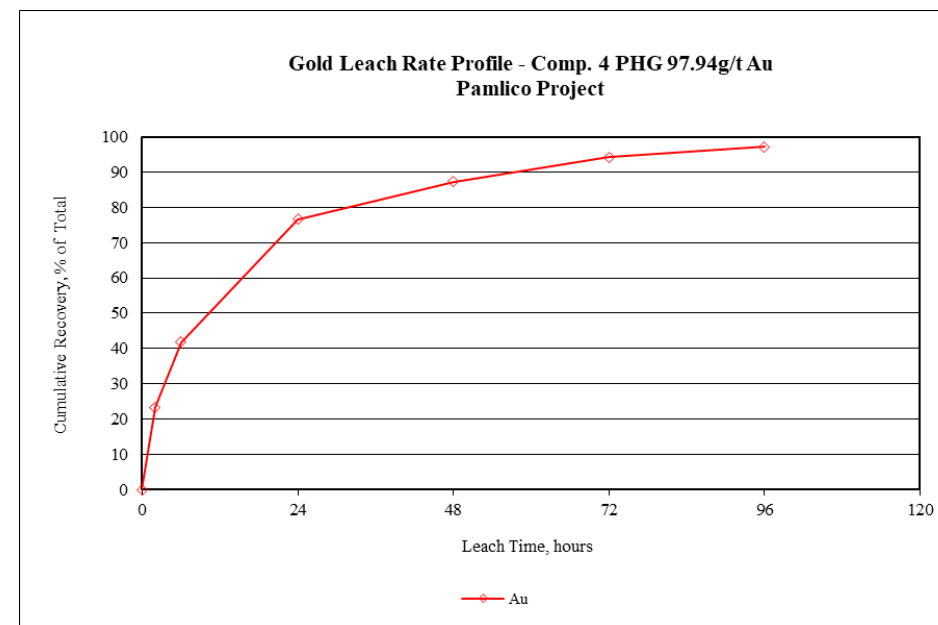
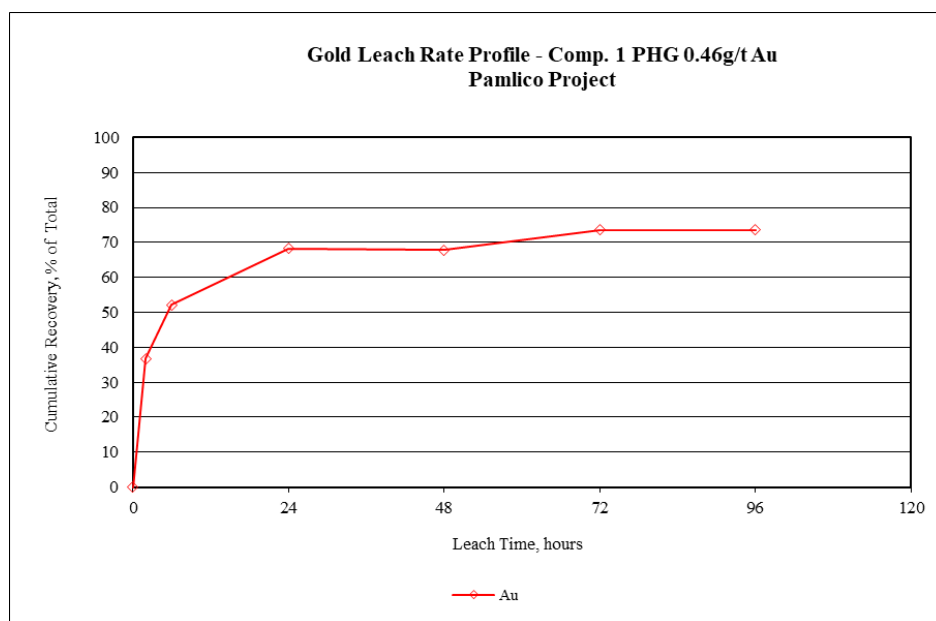
- State-of-the-art LIDAR surveying of ~8,000 metres of underground workings is providing sub-cm accuracy for mapping & sampling
- Collects 300,000 datapoints per second
- Result is a spatially accurate 3D model of the underground workings
- Assays from underground channel sampling can be used in a resource estimate
- Better targeting for surface drilling



# Recent and Ongoing Exploration Programs

## Preliminary Metallurgy

- Cyanide shake assays conducted on RC drilling samples indicated amenability for heap leaching
  - Recoveries for samples assaying 0.13-4.0g/t averaged 93.8%
- More advanced 96-hour bottle roll tests
  - Four composite samples with Predicted Head Grades of 0.07, 0.46, 1.27 and 97.94 g/t Au
  - Gold recoveries were very high, ranging from 73.6% to 97.1%
  - Rapid leach time and low cyanide consumption
- Dry screening of 'raw' material yielded 79.28% of the gold in 12.82% of the original sample weight
  - Potential to reduce capital and operating costs





# Pamlico Targeting – What does it take to make a mine?

## Open Pit Mines/Deposits in Nevada

- Of the 27 producing gold mines in Nevada, 14 have average grades below 1.0 g/t Au; if we add 5 other advanced-stage projects, the total is 18 out of 32.
- Of those 18, ten have average grades below 0.5 g/t Au and cut-off grades as low as 0.06 g/t Au
  - Coeur's Rochester Mine – 0.10 g/t Au
  - Alio Gold's Florida Canyon Mine – 0.37 g/t Au
  - Allied Nevada's Hycroft Mine – 0.38 g/t Au
  - Newmont's Lone Tree Mine – 0.24 g/t Au
  - SSR Mining's Marigold Mine – 0.45 g/t Au
  - Fiore Gold's Pan Mine – 0.48 g/t Au
  - Waterton's Ruby Hill Mine – 0.48 g/t Au
  - Paramount Gold's Sleeper Mine – 0.33 g/t Au
  - Corvus Gold's North Bullfrog/Mother Lode Project – 0.26 g/t Au (M&I heap leach)
  - Coeur's Lincoln Hill – 0.38 g/t Au

# Potential at Pamlico

## Weighted average grades of RC drilling samples from 47 holes

Cutoff Grade (g/t Au)	# Samples	Meters	Average Grade (g/t Au)
No cut	All – 4,093	5,402	0.581
0.01	2,476	3,171	0.986
0.05	1,218	1,498	2.063

Note: The reader is cautioned that the above numbers do not represent a resource estimate and are only presented as an indication of the grade distribution within the 47 RC holes drilled to date. The Company will be working towards a NI 43-101 compliant resource in 2020.

- All mineralization is oxide and within 100 m of surface, most within 50 m
- Area of drilling is approximately 500 m NW-SE by 100 m SW-NE, mostly in Merritt Area
- Area of old mine workings is 1,500 x 1,000 m and open in all directions



# 2019 Work Program – Catalysts & News Flow

---

- Underground surveying, mapping & sampling
- Structural interpretation; 3D modeling of mineralized zones
- Trenching & IP at Pediment Zone
- Surface mapping & sampling of various zones
- RC Drilling at various target zones

# Share Structure

	No. Shares
<b>Shares Issued</b>	<b>96,759,435</b>
<b>Warrants</b>	14,887,382
<b>Warrants (RMM)*</b>	1,700,000
<b>Options</b>	4,137,597
<b>Shares Fully Diluted</b>	<b>117,484,414</b>

\* Vendors of Rocky Mountain Project

As of September 5 2019

- Tightly held share structure
  - Insiders own 9%
- No share consolidation in company history





# Newrange Gold – The Value Proposition

## **“The Best Place to Find a New Mine is in the Shadow of a Headframe”**

- Past Producing High Grade Gold District
- World Class Address
- Excellent Infrastructure
- Exceptional Metallurgy
- Open Pit and/or Underground Potential
- Top-Tier Management



**Round Mountain mine**

Contact Us



# Newrange Gold Corp.

Phone: +1 (604) 669-0868

Email: [info@newrangegold.com](mailto:info@newrangegold.com)

[www.newrangegold.com](http://www.newrangegold.com)

