

A large, jagged iceberg floats in the center of a deep blue ocean. The sky is a vibrant blue with scattered white clouds. In the distance, a range of green, forested mountains is visible on the horizon. The water's surface is textured with small waves.

*~ 98 square kilometers of the  
Cortez gold-trend of Nevada ~*

Investor Presentation  
SEPTEMBER 2018



# The golden opportunity...

***...to invest in the largest 100% ‘independently’ owned land package in the famed Cortez gold-trend of Nevada***



## **98 sq. km in Cortez trend**

- On strike with Barrick's three best gold deposits<sup>1</sup>



## **World Class Shareholders**

- OceanaGold
- Barrick Gold
- Tocqueville



## **District Scale Discoveries**

- Several Carlin-style gold deposits
- Epithermal gold prospects



## **Successful Governance & Geo Team**

- 3 former Barrick executives on BOD
- Successful mine finders & financiers
- C\$6.5 million treasury



## **Accelerating Exploration**

- Discovered Serena and VIO zones in 2017
- Drilling to restart Sept 2018

**Nevada is the 4<sup>th</sup> largest gold producing “nation” in the world**



# Capital structure

## Ownership distribution

Capital structure	Shares Outstanding	306.8 million
	52 Week Range	C\$ 0.15 - 0.29/share
	Market Capitalization	~ C\$ 56.0 million
	Current Cash	~ C\$ 6.5 million
	Proceeds On Exercise of Options & Warrants	~ C\$ 10.5 million
	Warrants / Options	12.8 / 32.0 million
	Fully Diluted	351.6 million

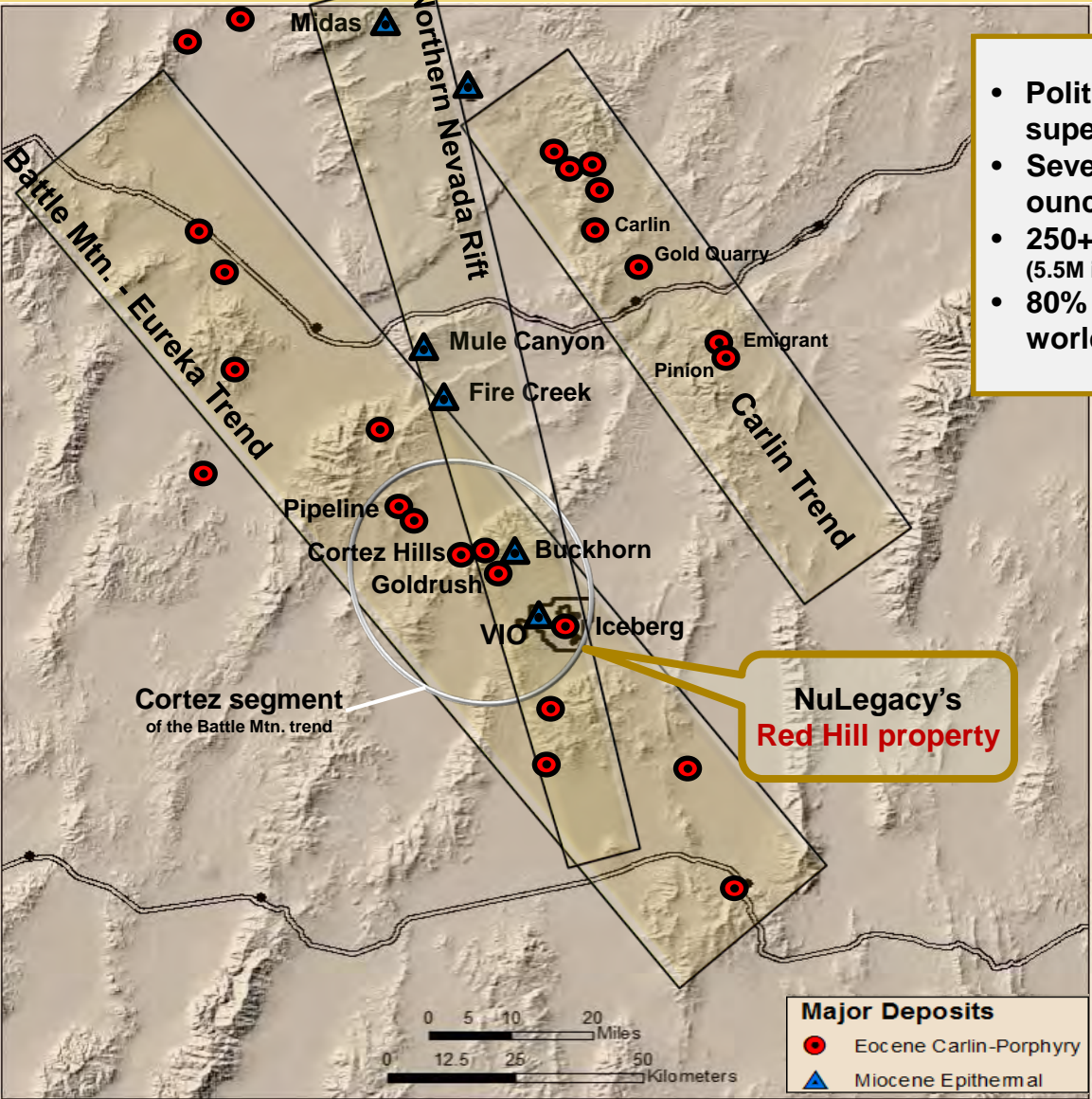
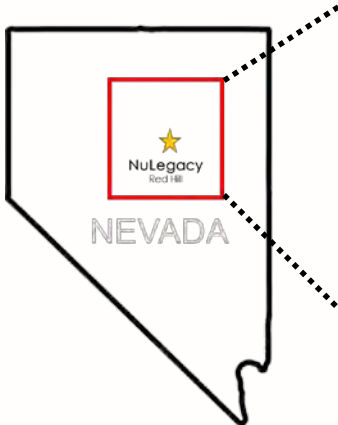
Ownership distribution 	Miners	Shares (millions)	%
	✓ OceanaGold	49.8	16.2
	✓ Barrick Gold	32.0	10.4
	Institutions		
	✓ Tocqueville	28.6	9.3
	Davenport LLC	14.5	4.7
	Ingalls & Snyder	6.0	2.0
	Public	~ 123	~ 40.1
	Principals	53	17.3

Analyst coverage	Scarsdale Equities LLC	scarsdale-equ.com	Mike Niehuser	miken@scarsdale-equities.com
	VSA Capital	vsacapital.com	Oliver O'Donnell	oodonnell@vsacapital.com





# Nevada's target rich gold-trends



- Politically stable with superior logistics
- Several greater than 20M ounce gold deposits
- 250+ M ounces mined (5.5M in 2016)
- 80% of US and 10% of world production

NuLegacy's  
**Red Hill property**

**Major Deposits**

- Eocene Carlin-Porphyry
- ▲ Miocene Epithermal

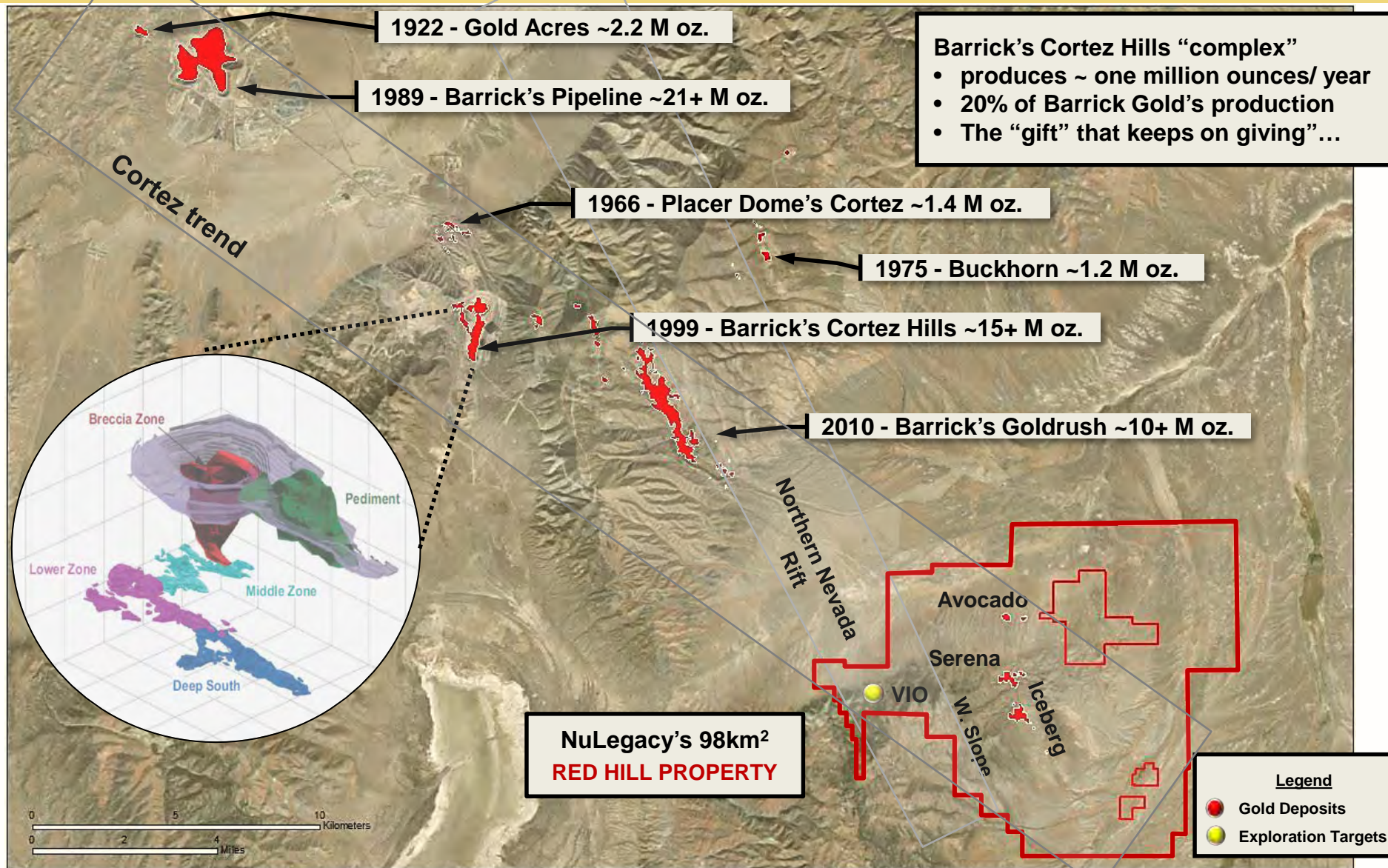




# Cortez trend

## Clusters of Carlin-Type and Epithermal gold deposits

*NuLegacy Gold*  
CORPORATION



NUG:V | NULGF:QX

Discovering gold in the Cortez Trend, Nevada

# The making of a Carlin-Type Elephant

*NuLegacy Gold*  
CORPORATION

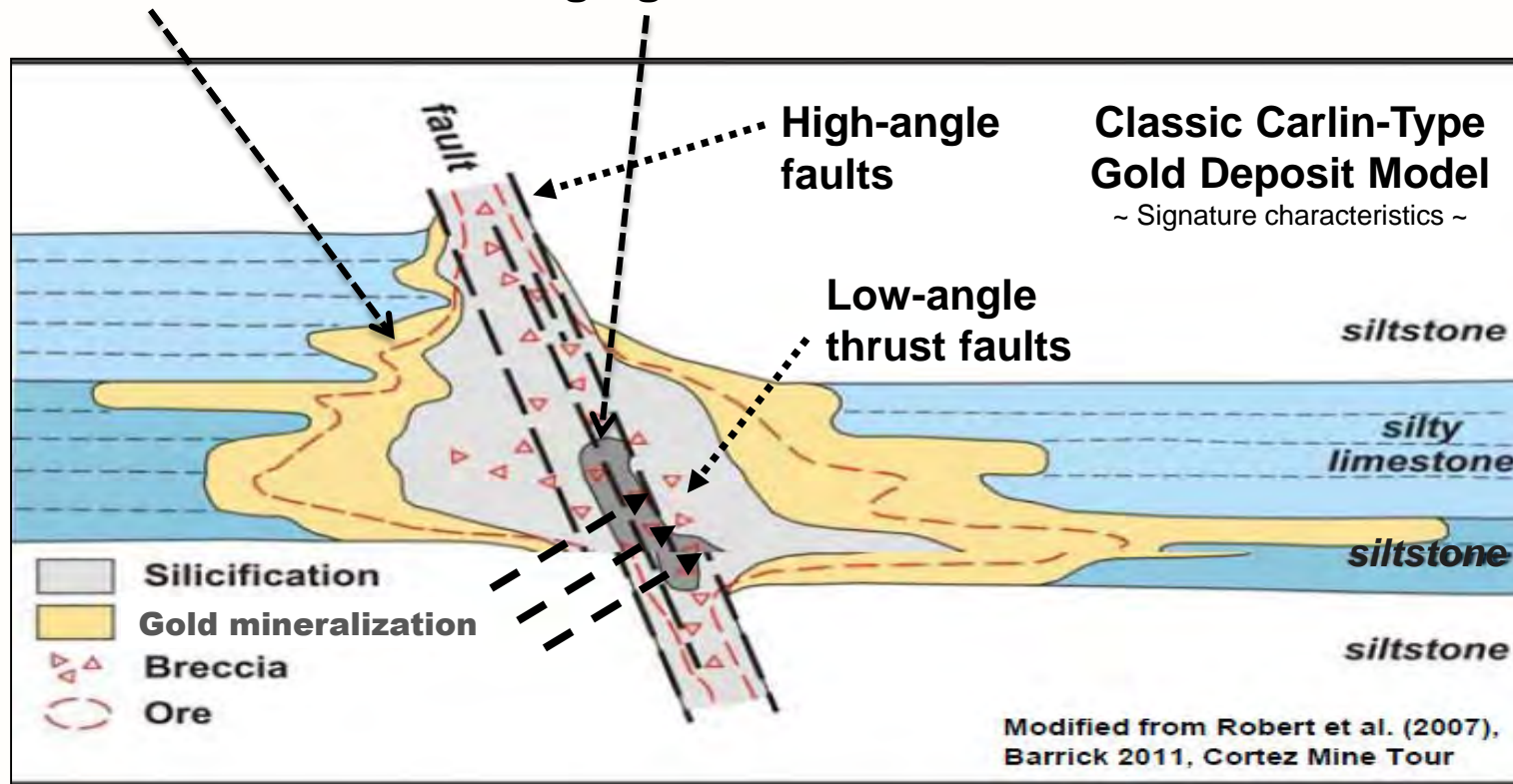
Take **100**  
million tons of  
0.5 g/t oxide  
gold deposit



**20** million tons of  
higher grade 'feeder  
zone' material at 10  
to 20+ g/t gold



**Classic Cortez high  
grade gold deposit  
at 2 to 4+ g/t gold**

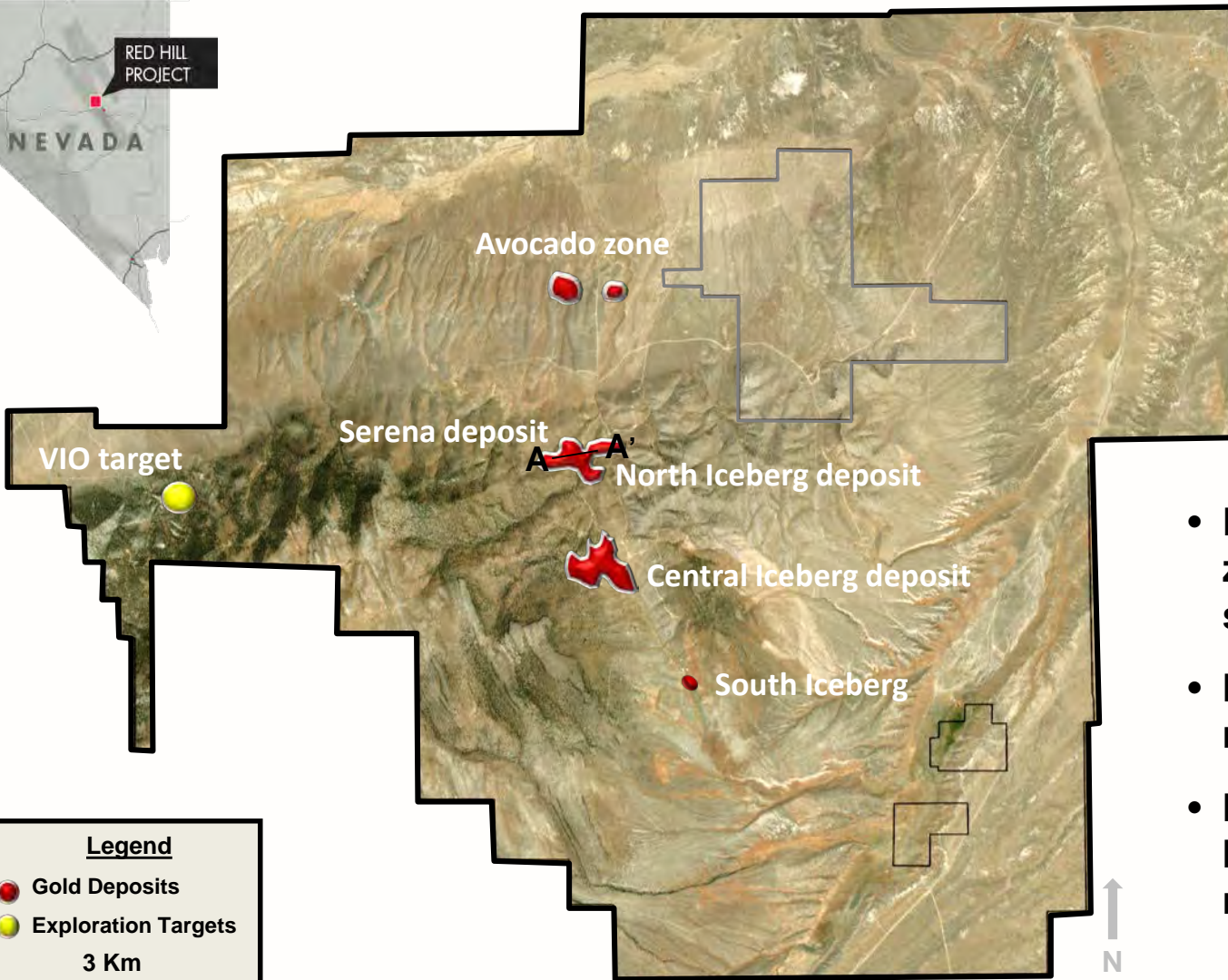




# Red Hill zones



RED HILL  
PROJECT



**RED HILL  
PROPERTY**  
(98 sq. km/38 sq. miles)



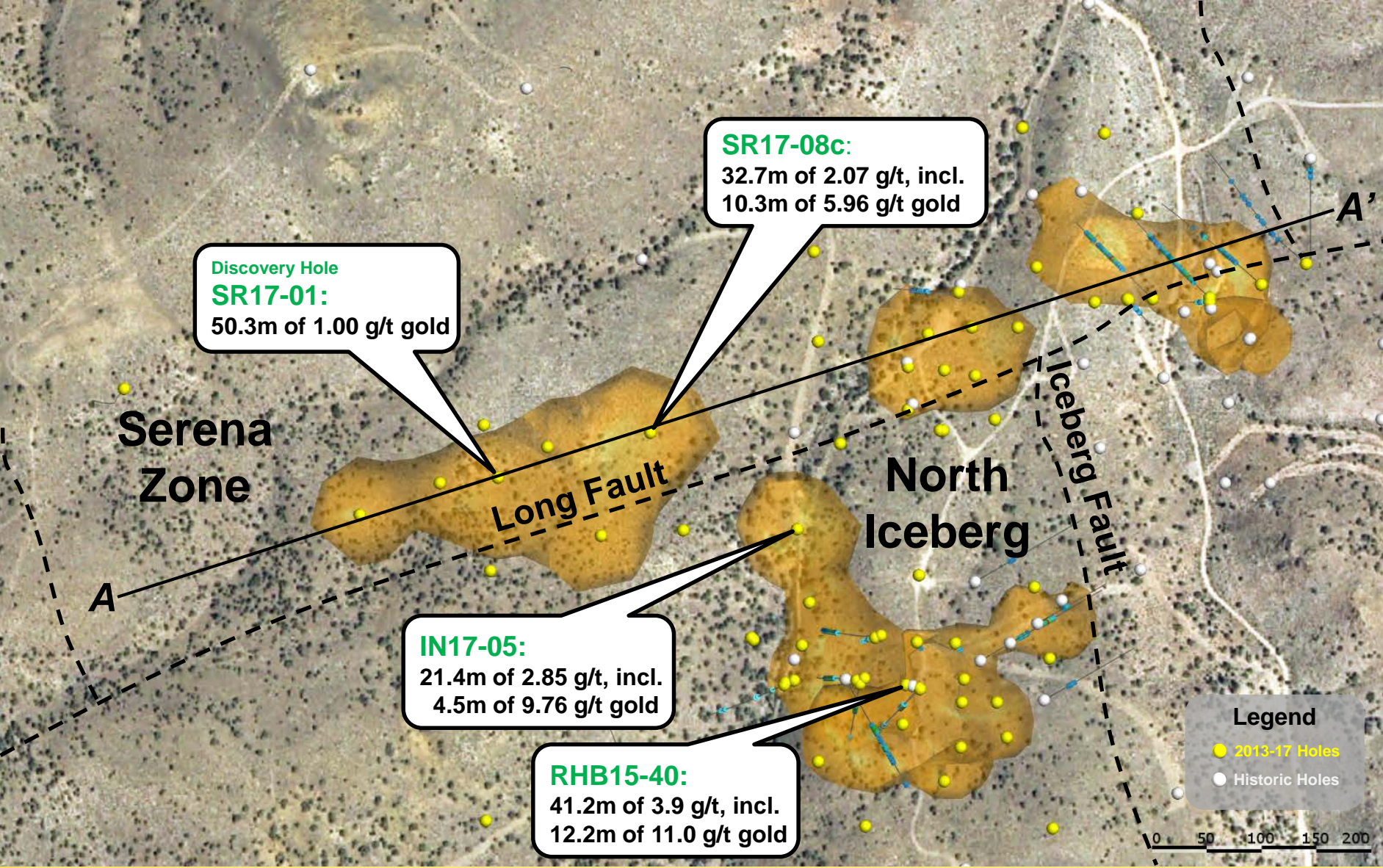
- Five mineralized zones over six km strike length
- Metallurgical test recoveries of 74.5+<sup>3</sup>%
- Multiple gold bearing horizons/open in multiple directions





# Serena Zone & North Zone

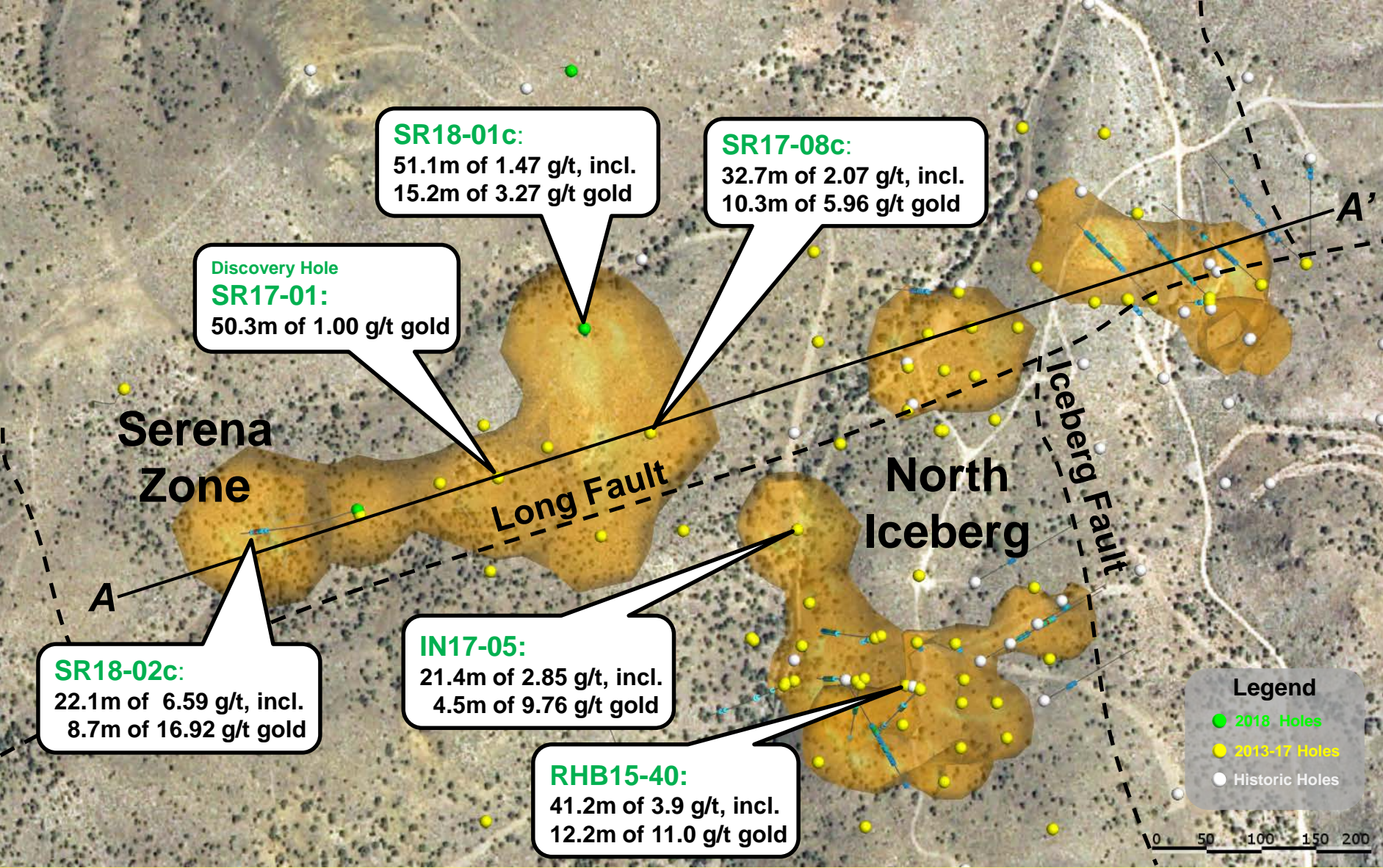
## Connecting The Dots - 2017 Drilling





# Serena Zone & North Zone

## Connecting The Dots - 2018 Drilling



# Serena & North zone

## Drilling highlights

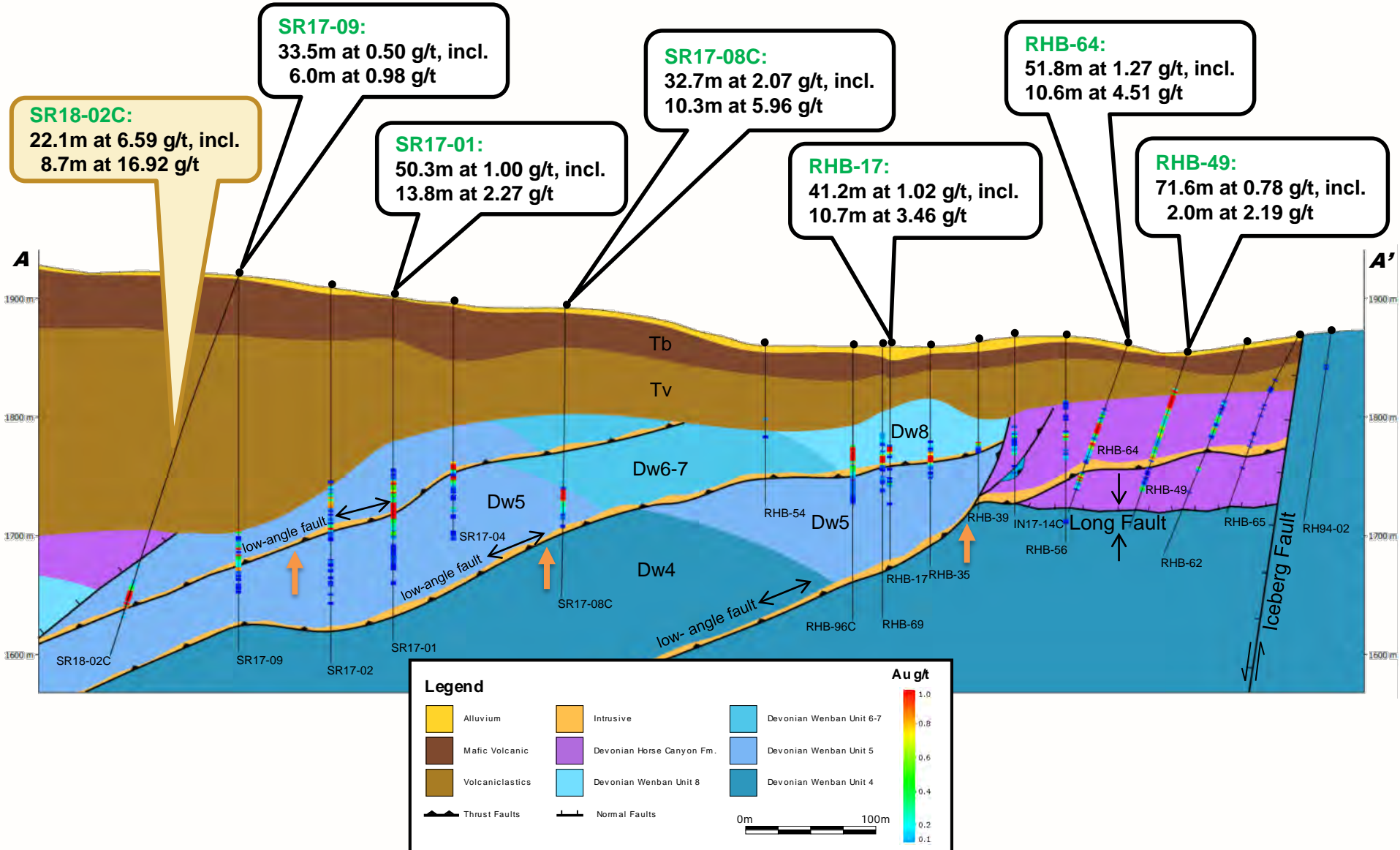
Serena zone mineralization <sup>4</sup>					
Hole Number	Intercept		Thickness	Grade	Grade*thickness
	From (m)	To (m)	(m)	(g/t)	Gram-meters
IN17-05	123.4	144.8	21.4	2.85	<b>61.0</b>
including	131.1	135.6	4.5	9.76	<b>43.9</b>
SR17-01	150.9	201.2	50.3	1.00	<b>50.3</b>
SR17-04	135.6	157.0	21.4	0.85	<b>18.2</b>
SR17-06	123.4	164.6	41.2	0.77	<b>31.7</b>
SR17-08c	153.2	185.9	32.7	2.07	<b>67.7</b>
including	153.2	163.5	10.3	5.96	<b>61.4</b>
SR17-08c	153.2	185.9	32.7	2.07	<b>67.7</b>
SR18-01c	132.9	184.0	51.1	1.47	<b>75.1</b>
including	132.9	148.0	15.2	3.27	<b>49.7</b>
SR18-02	283.7	292.4	8.7	16.92	<b>147.2</b>

North zone mineralization <sup>4</sup>					
Hole Number	Intercept		Thickness	Grade	Grade*thickness
	From (m)	To (m)	(m)	(g/t)	Gram-meters
RHB-17	71.6	112.8	41.2	1.02	<b>42.0</b>
RHB-40	97.5	138.7	41.2	3.92	<b>161.5</b>
including	121.9	126.5	4.6	25.21	<b>116.0</b>
RHB-49	38.1	109.7	71.6	0.78	<b>55.8</b>
RHB-58	131.1	166.1	35.0	3.41	<b>119.4</b>
including	141.7	149.4	7.7	7.30	<b>56.2</b>
RHB-64	68.6	120.4	51.8	1.27	<b>65.8</b>
RHB-68	128.0	161.5	33.5	2.46	<b>82.4</b>
RHB-82	54.9	76.2	21.3	2.16	<b>46.0</b>
including	61.0	65.5	4.5	6.09	<b>27.4</b>





# Spring 2018: Reinterpreted North zone cross-section A-A'<sup>4</sup>

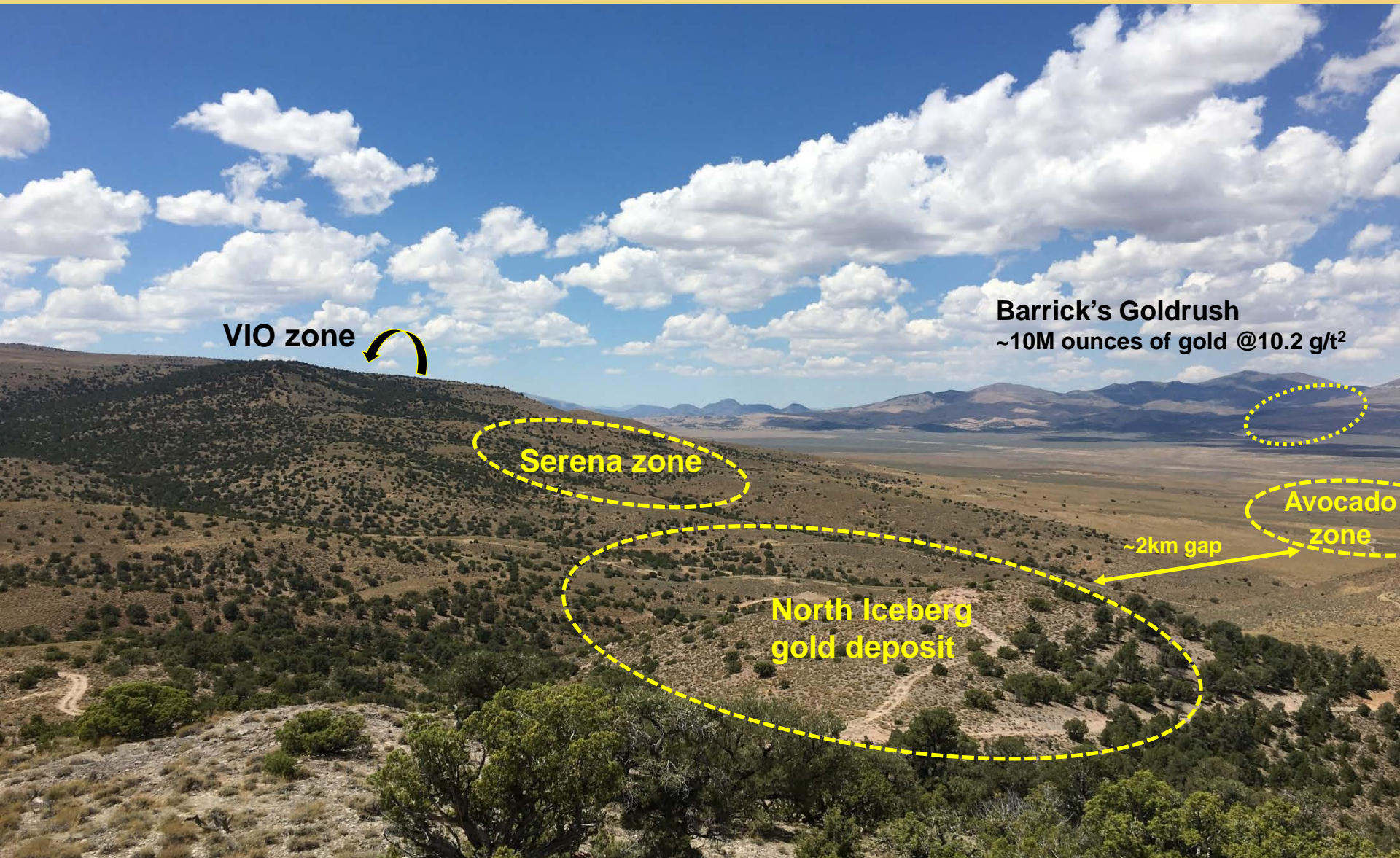




# Multiple zones

Open in multiple directions

*NuLegacy Gold*  
CORPORATION



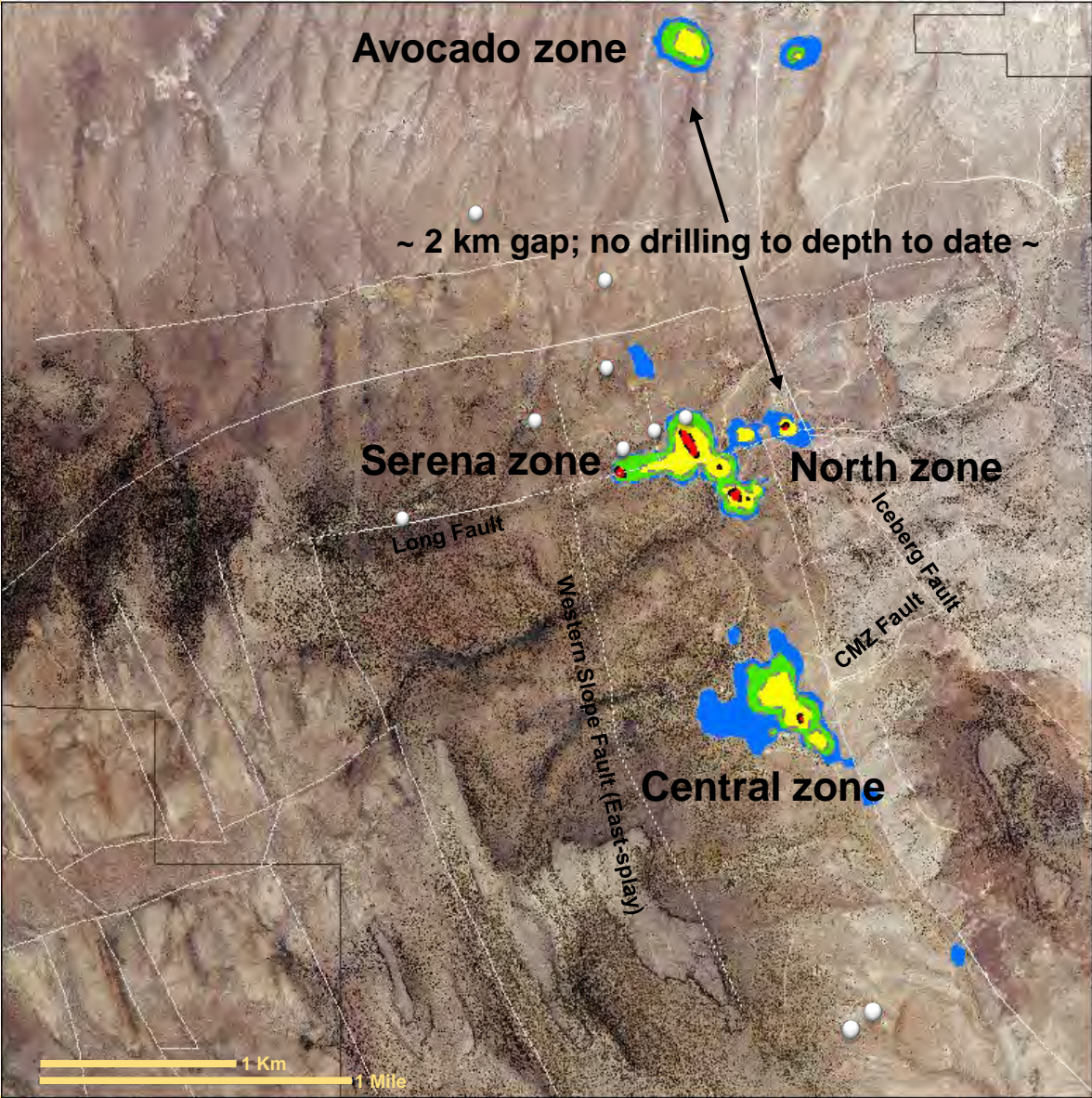
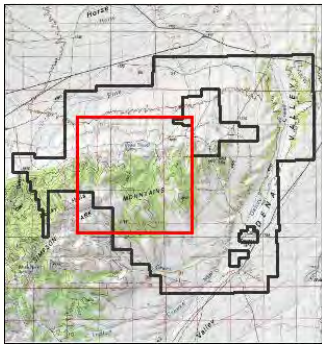
NUG:V | NULGF:QX

Discovering gold in the Cortez Trend, Nevada

12



# Red Hill grade thickness map

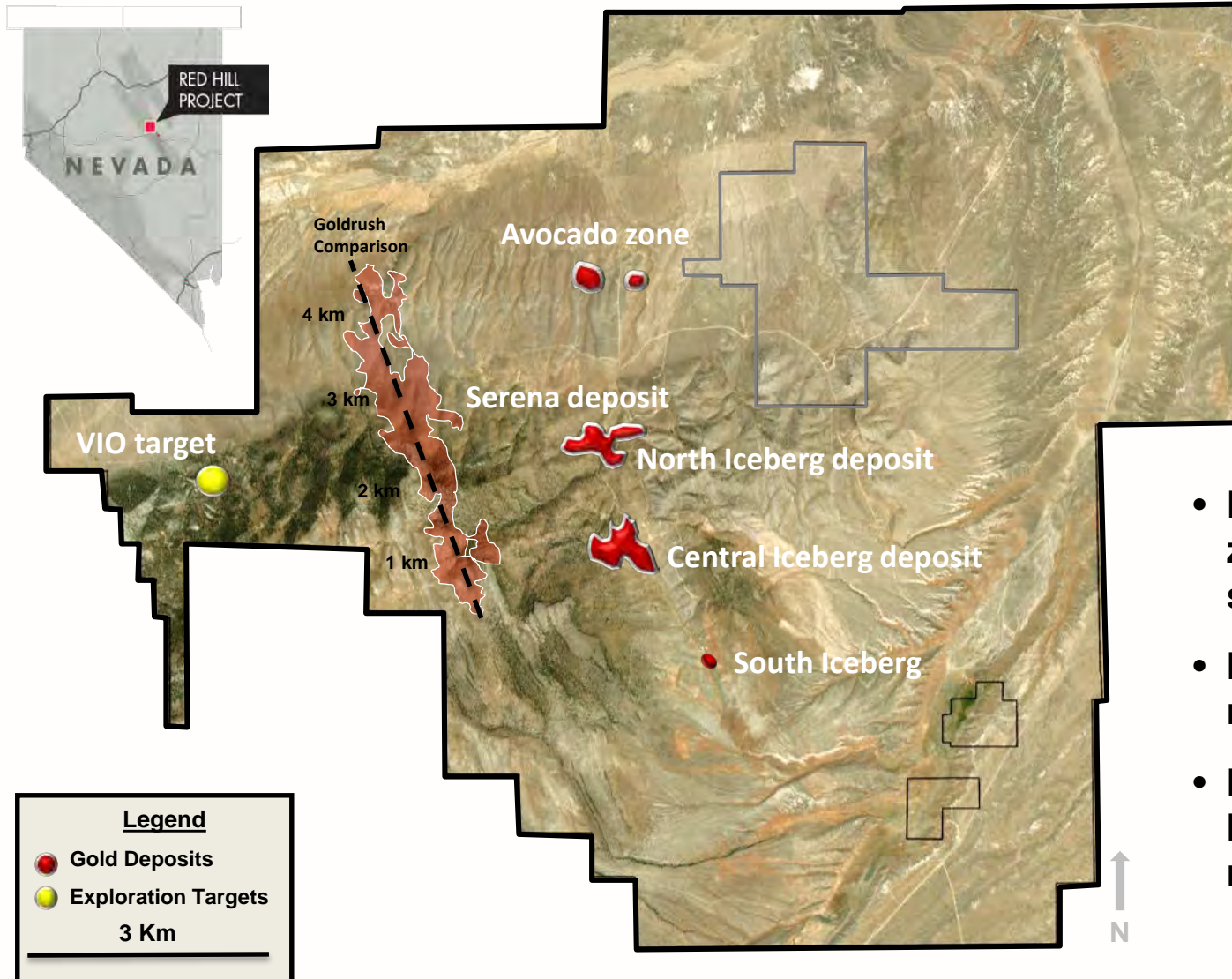


**Legend**

- Fall 2018 Proposed Drill Holes
- > 50 gpt\*m
- > 10 gpt\*m
- > 10 gpt\*m
- 5 - 10 gpt\*m







**RED HILL  
PROPERTY**  
(98 sq. km/38 sq. miles)



- Five mineralized zones over six km strike length
- Metallurgical test recoveries of 74.5+<sup>0</sup>%<sup>3</sup>
- Multiple gold bearing horizons/open in multiple directions





# Exploration team

## Old school & new school

### EXPLORATION MANAGEMENT:

**Derick Unger, MSc Geo.**

**Chief Geologist**

Contributed to discoveries of sediment-hosted (Cove, Gordonsville) and volcanic-hosted (Midas) deposits

**Charles Weakly\*, BSc**

**District Geologist**

Contributed to multi-million ounce expansions of Barrick's Goldstrike & Goldrush discoveries

### EXPLORATION DIRECTION:

**Alex Davidson\*, MSc Ec Geo.**

**Independent Director**

Co-discovered the 8.5+ million ounces Barrick's Lagunas Norte mine

**Edward Cope\*, MSc Ec Geo.**

**Independent Director**

Led team that added ~ 50 million ounces to Barrick's Nevada gold endowment

**Roger Steininger\*, PhD**

**Director**

Discovered Barrick's 21+ million ounces Pipeline mine, NuLegacy's Iceberg and Avocado gold deposits

### EXPLORATION OPERATIONS:

**Bryan Kellie, BSc**

Project Geologist

**Denise Dowell, BSc**

Geo-tech Administrator

**Garrett Frey, BSc**

Senior Geologist

**John Katseanes, BSc**

Geo-technical database architecture

**Robert Springs, BSc**

Geologist

**William Mounts, DICAT**

Drilling Supervisor



*\*... 4 of NuLegacy's geo-team were instrumental in the discovery/expansion of four of Barrick Gold's best gold deposits ...*



## CORPORATE MANAGEMENT:

<b>Albert Matter</b> Co-founder Alamos Gold Inc, NuLegacy Gold	<b>Chairman, Director</b>
<b>James Anderson</b> Co-founder Alamos Gold Inc., NuLegacy Gold	<b>Chief Executive Officer, Director</b>
<b>Danny Lee</b> Administrated Eagle Hill & Oban merger to form Osisko Mining	<b>VP Administration &amp; Chief Financial Officer</b>
<b>Michelle Savella</b>	<b>Executive Assistant</b>
<b>JoAnn Newbury</b>	<b>Community Liaison Officer, Nevada</b>



## INDEPENDENT DIRECTORS:

<b>Alex Davidson</b>	Director, Yamana Gold Inc.- former EVP Barrick Gold
<b>Alan Hill</b>	Chair, Teranga Gold Corporation – former EVP Barrick
<b>Edward Cope</b>	Former VP Exploration, North America, Barrick Gold
<b>John Budreski</b>	President & CEO of Morien Resources Corp. and Chairman of EnWave Corp.

## ADVISORY COUNCIL:

<b>Glen Darou</b>	Retired CFO, Shell Canada
<b>Stuart “Tookie” Angus</b>	Chair & Director, K92 Mining Inc.

*... track records of successfully securing and advancing high-quality assets to production ...*





- ✓ Nevada: the 4<sup>th</sup> largest gold producing “nation” in the world  
The best place on planet Earth to find a gold deposit

- ✓ Excellent team; professional planning and execution  
Continuing to add to our talented team

- ✓ Strong treasury, supportive shareholders  
Our shareholders make us strong

- ✓ Additional discoveries being expanded  
New zones identified every drill season

- ✓ Several en echelon gold deposits  
Getting bigger with every drill hole



1

Drilling Program to  
continue Sept 2018

+

2

Combining old school  
“know-how” and new  
school technology

+

3

Continuing emphasis  
on discovery of high  
impact gold zones

=

**Finding the  
elephant!**



1. The presence of gold resources on properties in close proximity (or adjacent) to the Red Hill property is not necessarily indicative of the gold mineralization on the Red Hill property. To date, there are no known NI 43-101 mineral resources or reserves on the Red Hill property.
2. As reported by Barrick Gold Corporation, the revised and updated Goldrush resource with an underground production scenario is significantly higher grade than the previously reported open pit resource. It contains 8,557,000 indicated ounces of gold within 25.78 million tonnes grading ~10.57 g/t and 1,650,000 inferred ounces within 5.6 million tonnes grading ~9.0 g/t.
3. Preliminary one hour "tumble leach in cyanide" tests conducted by American Assay Labs using previously assayed 30 gram sample pulps from recent core drilling demonstrated high average recoveries of 74.5% (within a range of 64.4% to 89.2%) from oxidized Horse Canyon-Wenban contact horizon material wherein most of the Iceberg deposit's gold is contained.
4. The reported gold intervals may or may not represent true thicknesses and/or widths as there is insufficient data at this time with respect to the shape of mineralization to calculate its true orientation. All drilling was conducted by NuLegacy's drilling contractors under the supervision of the Company's project geologist and the chain of custody from project to sample preparation facility was continuously monitored. The samples were analyzed by American Assay Labs of Sparks, NV and sufficient commercially prepared standards, blanks, and duplicates were inserted to assure quality analytical results. Data verification of the analytical results included a statistical analysis of the duplicates, standards and blanks to ensure accurate and verifiable results.

## Forward Looking Statements

This presentation contains forward-looking statements. Forward-looking statements are statements that relate to future, not past events. In this context, forward-looking statements often address NuLegacy's expected future business and financial performance, and often contain words such as "anticipate", "believe", "plan", "estimate", "expect", "ensure" and "intend", statements that an action or event "may", "might", "could", "should", or "will" be taken or occur, or other similar expressions. By their nature, forward-looking statements involve known and unknown risks, uncertainties and other factors which may cause our actual results, performance or achievements, or other future events, to be materially different from any future results, performance or achievements expressed or implied by such forward-looking statements. Such factors include, among others, risks associated with project development; the need for additional financing; operational risks associated with mining and mineral exploration; actual results of current and future exploration activities, fluctuations in gold and other commodity prices; title matters; environmental liability claims and insurance; reliance on key personnel; the absence of dividends; competition; dilution; the volatility of our common share price and volume; and tax consequences to U.S. Shareholders, as well as those factors discussed in NuLegacy's continuous disclosure documents filed on SEDAR at [www.sedar.com](http://www.sedar.com). Forward-looking statements are made based on management's beliefs, estimates and opinions on the date that statements are made and the Company undertakes no obligation to update forward-looking statements if these beliefs, estimates and opinions or other circumstances should change, save as required by applicable law. Investors are cautioned against attributing undue certainty or reliance upon forward-looking statements.

Mr. Derick Unger, CPG 11927, NuLegacy Gold's Chief Geologist and a Qualified Person under NI 43-101, has reviewed and approved the scientific and technical disclosure contained herein.

September 1, 2018





June, 2018

***“Once you’ve seen one Carlin-system, you’ve seen one Carlin-system, as they are all slightly different”***

Dr. Roger Steininger, Director, NuLegacy Gold Corporation

***“... after reviewing all the material this past six months, I’m convinced the Red Hill property has exactly the same stratigraphic column, the controls of mineralisation, geo-chemistry and low-angle structures that are the important conduits for the high grade gold-bearing fluids at Goldrush...just across the valley where I worked the last four years before joining NuLegacy<sup>1</sup> ...”***

Charles Weakly, BSc, District Geologist, NuLegacy Gold Corporation, starting Jan 1, 2018;  
previously Chief Geologist, Goldrush Exploration, wholly owned subsidiary, Barrick Gold Corporation

***“Charles was instrumental in the discovery/addition of more than 5 million ounces reserves averaging ~ 17 g/t ounces at the giant Goldstrike and Meikle Carlin-style deposits before transferring to Cortez where he played a key role in the recognition of the Fourmile extension at the massive Goldrush deposit just across the valley from NuLegacy’s Red Hill property<sup>2</sup>...”***

Ed Cope, Director, NuLegacy Gold Corporation since January 2017; previously Vice-President, North American Exploration, Barrick Gold Corporation



# Spring in the Cortez trend

*NuLegacy Gold*  
CORPORATION



  
*NuLegacy Gold*  
CORPORATION



NUG:V | NULGF:QX

Discovering gold in the Cortez Trend, Nevada

20