

# **BGM** BARKERVILLE GOLD MINES

TSX:V - BGM  
OTC: - BGMZF

Building A New Mining House Focused On Western Canada



EXPLORATION



DEVELOPMENT



PRODUCTION

# FORWARD LOOKING STATEMENT

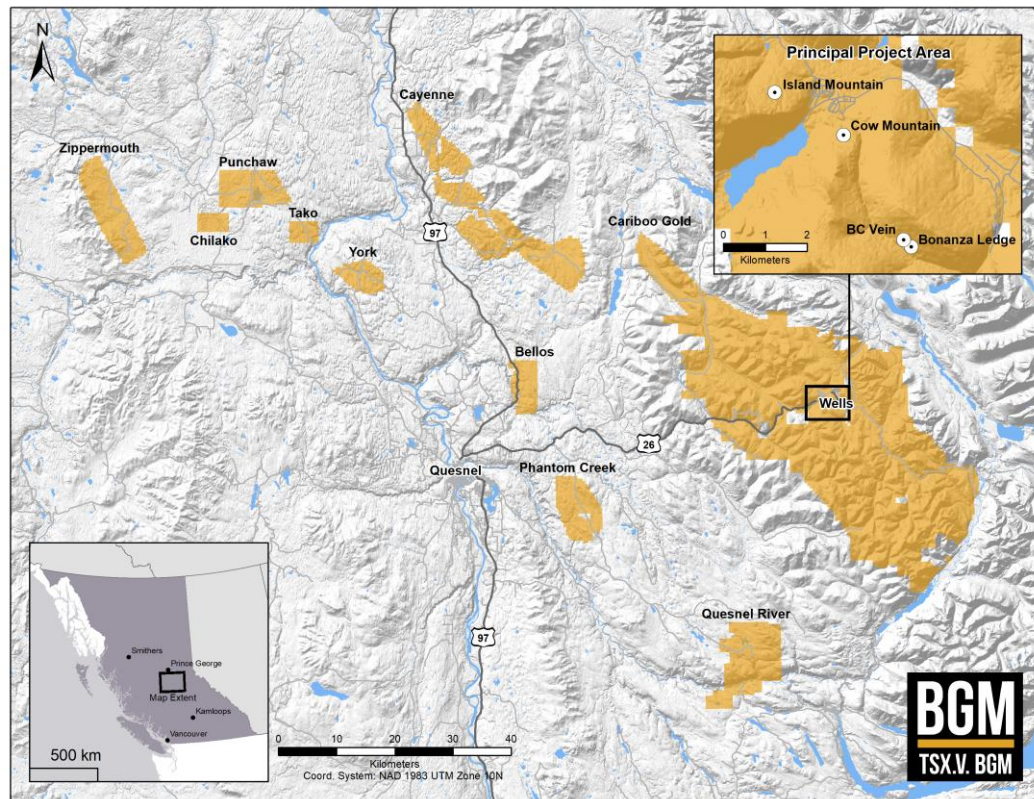
This presentation and the material contained herein are confidential and are for information purposes only and may not be reproduced or distributed to any other person or published, in whole or in part, for any purpose whatsoever. This presentation and the material contained herein do not constitute a general advertisement or general solicitation or an offer to sell or a solicitation to buy any securities in any jurisdiction. Such an offer can only be made by prospectus or other authorized offering document. This presentation and materials or fact of their distribution or communication shall not form the basis of, or be relied on in connection with, any contract, commitment or investment decision whatsoever in relation thereto. Barkerville Gold Mines Ltd.'s (the "Company") securities have not been registered under the United States Securities Act of 1933, as amended, and may not be offered or sold within the United States or to or for the account or benefit of U.S. Persons absent U.S. Registration or an applicable exemption from U.S. registration requirements. Any public offering in the United States must be made by means of a prospectus containing detailed information about the Company and management, as well as financial statements. The information in this presentation is not intended in any way to qualify, modify or supplement any prospectus or other information disclosed under the corporate and securities legislation of any jurisdiction relating to the Company. No securities commission or similar authority in Canada has in any way passed upon the adequacy or accuracy of the information contained in this presentation.

Some of the statements contained in the following material are "forward-looking statements". All statements in this presentation, other than statements of historical facts, that address estimated mineral resource and reserve quantities, grades and contained metal, and possible future mining, exploration and development activities, are forward-looking statements. Although the Company believes the expectations expressed in such forward-looking statements are based on reasonable assumptions, such statements should not be in any way construed as guarantees of future performance and actual results or developments may differ materially from those in the forward-looking statements. Accordingly, readers should not place undue reliance on forward-looking statement or information. Factors that could cause actual results to differ materially from those in forward-looking statements include market prices for metals, the conclusions of detailed feasibility and technical analyses, lower than expected grades and quantities of resources, mining rates and recovery rates and the lack of availability of necessary capital, which may not be available to the Company on terms acceptable to it or at all. All phases of the Company's operations are subject to environmental regulation and government approval and permits and there can be no assurance that the Company will obtain all the requisite permits for future development. The Company is subject to the specific risks inherent in the mining business as well as general economic and business conditions. The Company does not intend, and does not assume any obligation, to update these forward-looking statements, except as required under applicable securities legislation. For more information on the Company, readers should refer to [www.sedar.com](http://www.sedar.com) for the Company's filings with the Canadian securities regulatory authorities.



# CARIBOO GOLD PROJECT

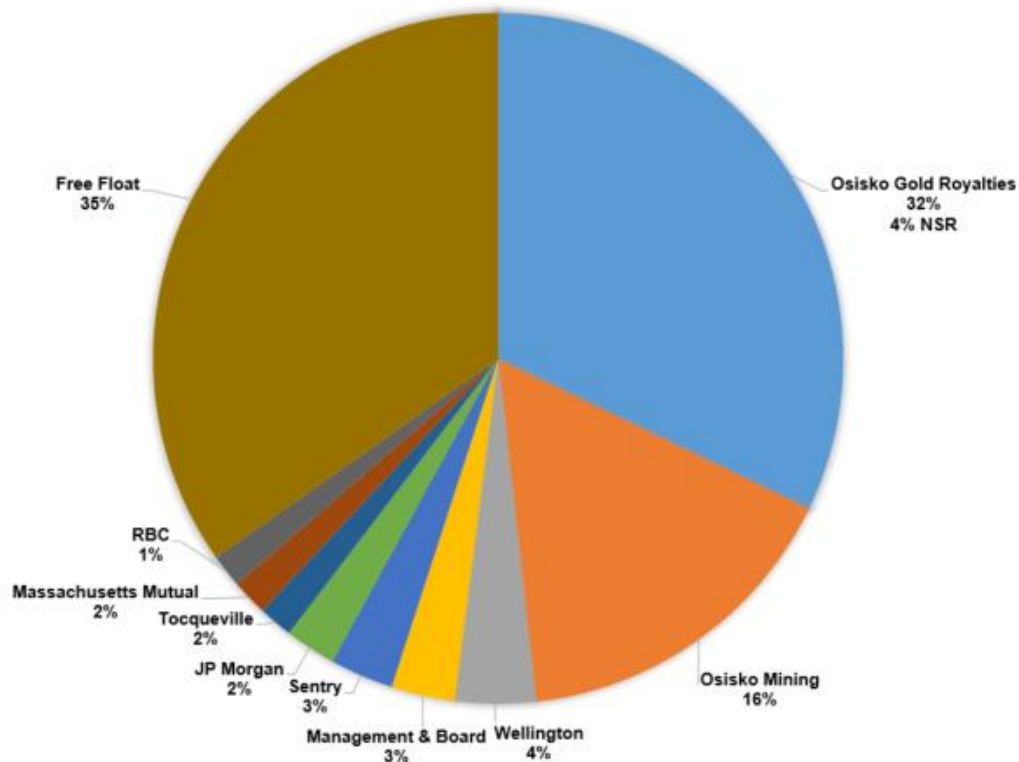
- **World Class Gold District**
- 2071 km<sup>2</sup> Of Mineral Rights
- Located 440 Km NE Of Vancouver, BC
- 4.5 M oz. Historic Gold Production (1858 to 1874 and 1933 to 1967)
- Extensive Areas Of Gold Rich Veins And Replacement Mineralization
- 148 km Of Underground Development
- > 6000 Historic Drill Holes
- Year Round Access And Services
- Operating Base Is Town of Wells, BC
- Permitted 875 Tonnes Per Day Mill
- Production from Bonanza Ledge and BC Vein



# EQUITY OVERVIEW

|                          |                 |
|--------------------------|-----------------|
| Basic Shares Outstanding | 439,803,997     |
| Warrants                 | 23,662,738      |
| Options                  | 27,765,000      |
| Fully Diluted            | 491,231,735     |
| 52 Week Range            | \$0.35 – \$0.91 |
| Cash                     | \$27 M          |
| Market Capitalization    | \$189 M         |

MAJOR SHAREHOLDERS



# CARIBOO GOLD PROJECT – TOPICS TO ADDRESS

1. Resource Summary
2. Objectives and catalysts for 2018
  - Greenfield and Brownfield Drilling
  - Underground Permit
  - Bonanza Ledge Production Phase 1
  - PFS Internal
3. Objectives and catalysts for 2019
  - FS Study Q2 2019
  - Resource Update Q1 2019, & 2020
  - Bonanza Ledge Production Phase 2

# RESOURCE SUMMARY – MAY 8<sup>th</sup>, 2018

| Cariboo Property Mineral Resources  |                   |            |                  |
|-------------------------------------|-------------------|------------|------------------|
| Deposit                             | Tonnes            | Au (g/t)   | Au Oz            |
| Measured                            |                   |            |                  |
| Bonanza Ledge                       | 264,000           | 7.3        | 61,900           |
| Indicated                           |                   |            |                  |
| Bonanza Ledge                       | 63,400            | 4.8        | 9,700            |
| BC Vein                             | 444,900           | 6.4        | 91,600           |
| Mosquito                            | 247,000           | 9.5        | 75,700           |
| Shaft                               | 4,373,200         | 5.9        | 835,600          |
| Valley                              | 769,600           | 5.8        | 142,700          |
| Cow                                 | 1,947,800         | 6.1        | 381,800          |
| Total Indicated                     | 7,845,900         | 6.1        | 1,537,100        |
| <b>Total Measured and Indicated</b> | <b>8,109,900</b>  | <b>6.1</b> | <b>1,599,000</b> |
| Inferred                            |                   |            |                  |
| BC Vein Inferred                    | 173,400           | 4.6        | 25,400           |
| Mosquito                            | 699,200           | 6.0        | 135,600          |
| Shaft                               | 7,357,000         | 5.1        | 1,213,000        |
| Valley                              | 2,454,300         | 5.4        | 423,400          |
| Cow                                 | 2,047,300         | 5.4        | 358,300          |
| <b>Total Inferred</b>               | <b>12,731,200</b> | <b>5.2</b> | <b>2,155,700</b> |

- 220,000 Meters of Drilling (Historical 50,000m and 170,000m Current)
- 957 Drillholes (Used in Estimation)
- 3.0 g/t Cutoff
- 183 Vein Corridors
- Open Down Dip and Along Strike
- Resource Calculated to a Max Depth of 450m and Average Depth of 300m
- Next Resource Published Q1 2019 – With Additional 105,000 m

# GEOLOGICAL MODEL

## Island Mountain Style

- Vertical Axial Planar Extensional Veins
- Massive Replacement

## Cow Mountain Style

- Vertical Axial Planar And Extensional Veins

## BC Vein

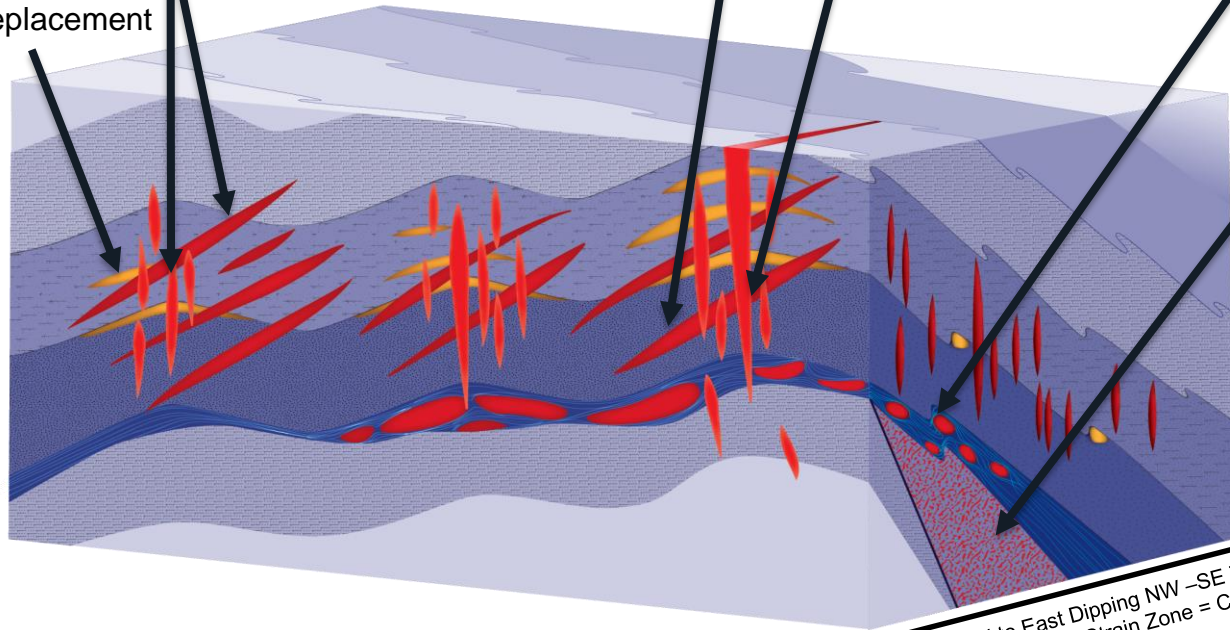
- Fault/Shear Hosted Vein

## Bonanza Ledge Style

- Semi Massive Replacement

## Legend

- Calcareous Sandstone
- Calcareous Siltstone
- Carbonaceous Mudstone
- Sandstone

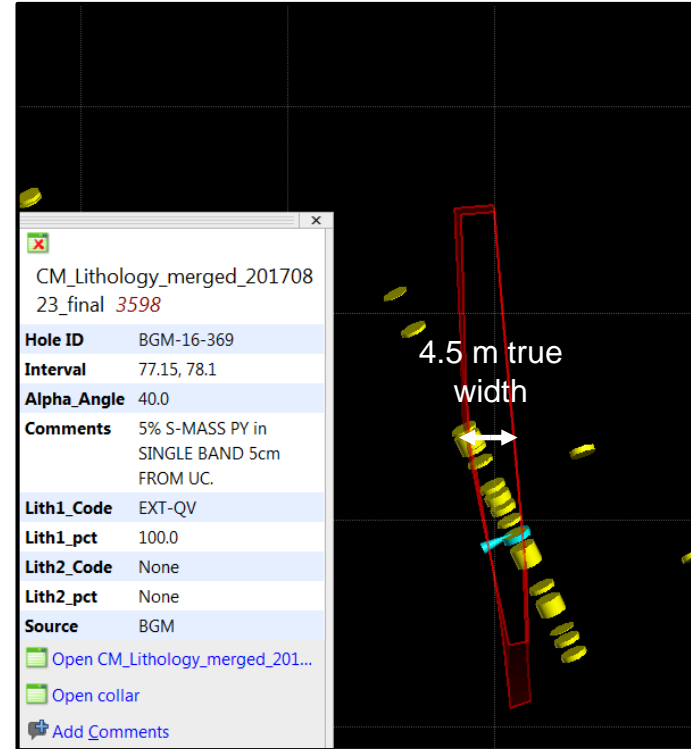


Vertical to East Dipping NW-SE Trending  
1 KM Wide High Strain Zone = Cariboo Break



# VEIN CORRIDORS

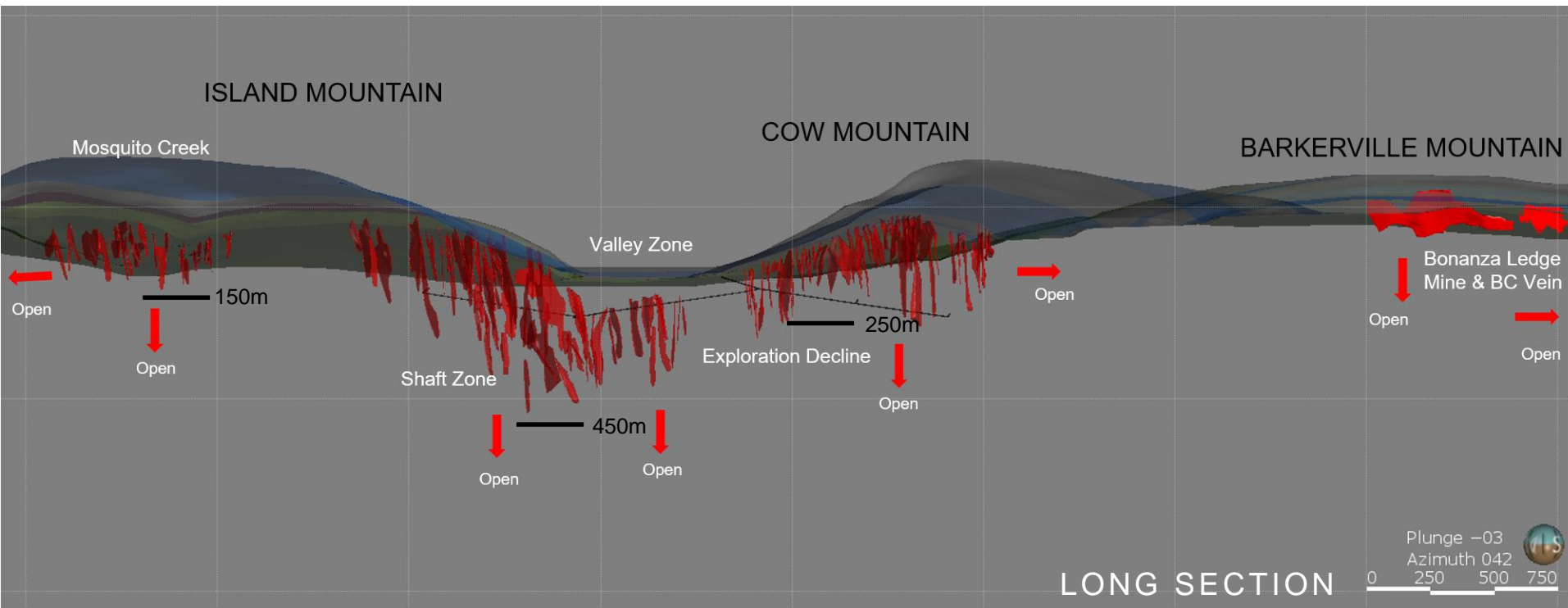
- Vein Corridors Are Modelled, Not Individual Veins.
- Minimum Thickness 2 Meters
- Average 4.5m With 250M Strike, And All Open At Depth





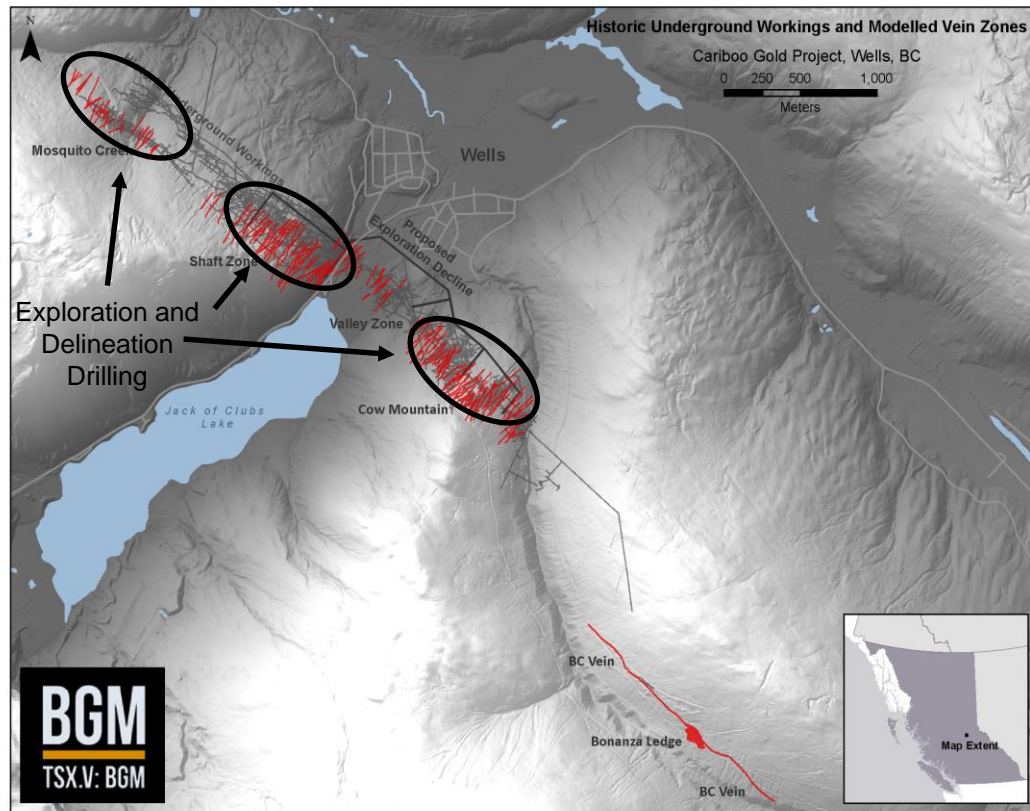
# RESOURCE AND DEVELOPMENT 2018-2019

LOOKING NORTHEAST - 6 KILOMETRES OF 67 KILOMETRES MINERALIZED TREND



# 2018 – OBJECTIVES & CATALYSTS

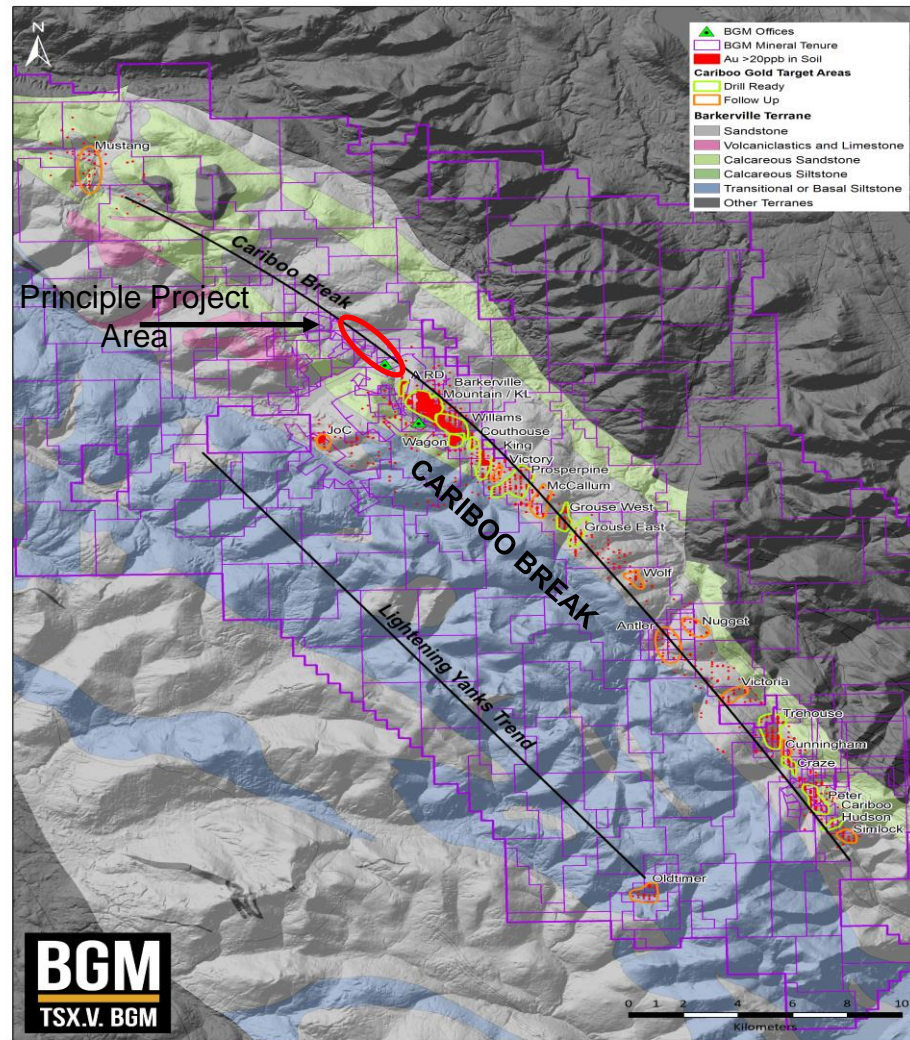
- Continue Systematic Exploration And Resource Delineation Drilling (120,000m / Year) – Completed 97,000 m As Of September 1<sup>st</sup>
- Advance Greenfields Pipeline
- 43-101 Resource Estimate – Completed May 8<sup>th</sup>
- Complete Internal PFS
- Mine Minimum 150,000 Tonnes From Bonanza Ledge – 80,000 Tonnes Mined As of September 1<sup>st</sup>



# GREENFIELD EXPLORATION

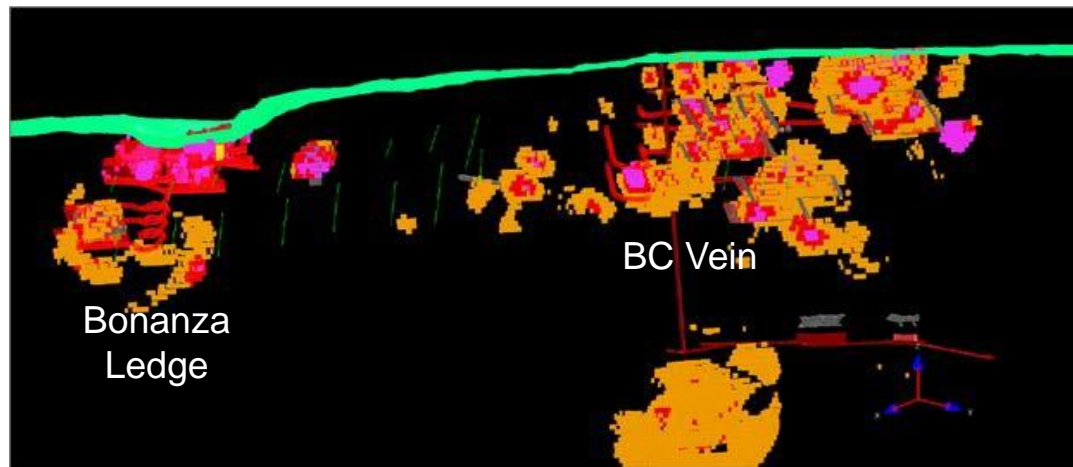
## EXCEPTIONAL UPSIDE

- 67 km Gold Rich Cariboo Break
- Parallel Breaks And Splays
- Limited Historic Exploration Due To Fragmented Land Position And Poor Understanding Of Metallogensis
- 160 Occurrences
- 13 Phase One Targets
- 11 Phase Two Targets “Drill to Kill”
- Drilled 4,800m In 2018 At Grouse Creek
- Recently Acquired Lightning Creek Claims – Hosted The Richest Placer Creeks In the Cariboo
- **Years of Greenfields Exploration**



# 2018 -2021 BONANZA LEDGE + BC VEIN MINE

- Wholly Underground Operation
- Initial Contract Mining
- Ore Trucked To 100% Owned QR Mill 110 Km
- Long Hole And Cemented Rock Fill
- Potential Life Of Mine ~3.5 Years
- 150,000 T At 6.5g/T Diluted / Year
- Target ~ 30,000 Oz Per Annum
- Average \$15M In Operating Cash Flow / Year
- **80,000 Tonnes Mined As Of September 1<sup>st</sup>, Average Grade of 7.05, and Recoveries at 91.7%**

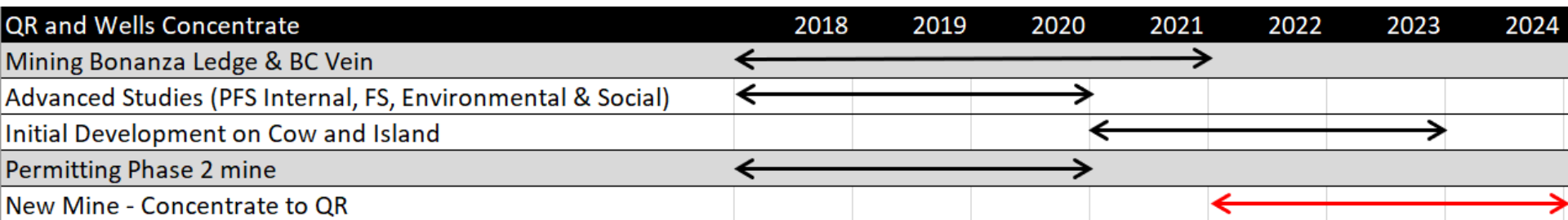


| CATEGORY  | TONNES (T) | AU (G/T) | CONTAINED AU (OZ) |
|-----------|------------|----------|-------------------|
| MEASURED  | 264,000    | 7.3      | 61,900            |
| INDICATED | 508,300    | 6.2      | 101,300           |
| TOTAL M+I | 772,300    | 6.57     | 163,200           |
| INFERRED  | 173,400    | 4.6      | 25,400            |



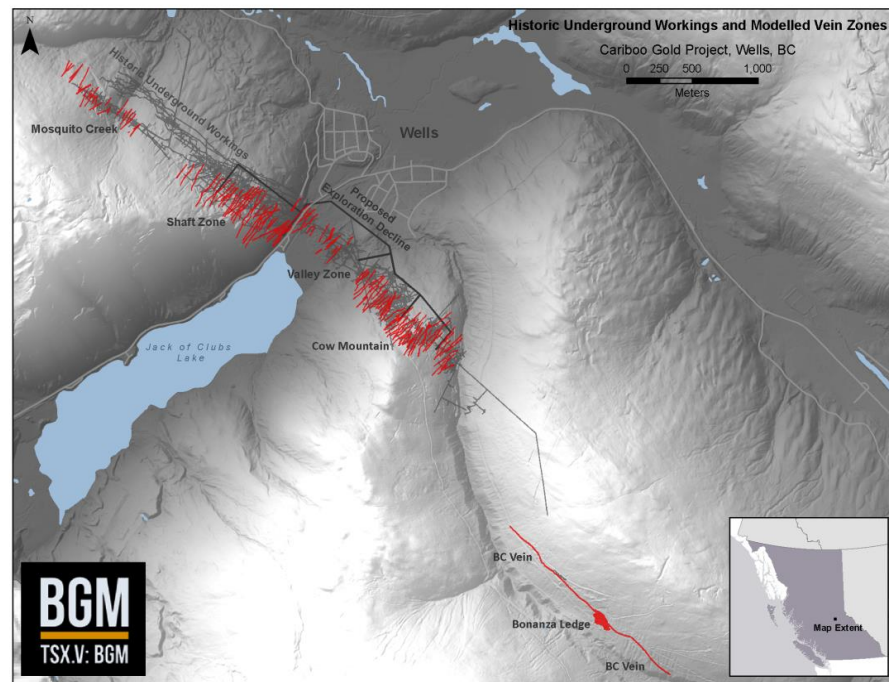
# FEASIBILITY UPDATE

- Use And Improve Existing Infrastructure At QR And Wells
- Concentration At The Wells Site
- Low Capital
- Shortened Permitting Timeline
- Metallurgical and Hydrogeological Test Work Ongoing



# 2019 – OBJECTIVES & CATALYSTS

- Advance Greenfields Pipeline
- 43-101 Resource Updates Q1 2019
- Complete Feasibility Study For Cow and Island Mountain Mine
- Continue Production From Bonanza Ledge And BC Vein



# STRONG LEADERSHIP: BOARD OF DIRECTORS

## SEAN ROOSEN, CHAIRMAN

- Chairman and CEO Osisko Gold Royalties Inc.
- Led the transition of Old Osisko from a junior exploration company to a leading intermediate gold producer
- Instrumental in \$1 billion financing and development of Malarctic Mine
- Member of the compensation committee

## ANTHONY MAKUCH DIRECTOR

- Professional engineer (Ontario)
- President and CEO of Kirkland Lake Gold
- Former President and CEO of Lake Shore Gold
- Former Senior VP + COO of FNX Mining Company
- Member of Technical Committee

## JOHN BURZYNSKI, DIRECTOR

- President and CEO of Osisko Mining
- Founder of Original Osisko Mining
- Professional Geologist

## CHRIS LODDER, DIRECTOR

- 25+ years of Greenfield and Brownfield Exploration
- President of Talisker Exploration Services, Former Exploration Manager for the Americas for AngloGold Ashanti
- The Group Discovered 28 M oz. in Greenfield and Brownfield Discoveries

## THOMAS OBRADOVICH, DIRECTOR

- 30+ years mining exploration, development
- President and CEO of Young Davidson Mines
- Co-Founder and Lead Director of Aurelian Resources, acquired by Kinross Gold Mines for \$1.2 billion
- Lead Director, Dalradian Resources
- Member of the Compensation, Health, Safety and Environment Committees

## ANDREE ST-GERMAIN, DIRECTOR

- Experienced mining finance executive
- Extensive background in banking, mining finance and operating mine-site financial management
- CFO for Integra Mining, Former CFO for Golden Queen Mining

## MORRIS PRYCHIDNY, DIRECTOR

- CACPA Life Member
- Serves as Chair of BGM's Audit Committee
- Audit Committee Chair for Northfield Capital
- Director at Nighthawk Gold Corp
- Member of the Audit Committee

## JOHN KUTKEVICIUS DIRECTOR

- Partner at Wildeboer Dellelce LLP
- Corporate and Tax Law Specialist
- Member of the Compensation, Health, Safety and Environment Committees

## JOHN SABINE, DIRECTOR

- Counsel, Bennett Jones LLP from 2013 to present;
- Partner and subsequently Counsel, Fraser Milner Casgrain LLP from 2001 to 2013.
- Non-Executive Chair of North American Nickel Inc. and a director of Seabridge Gold Inc.

# STRONG LEADERSHIP: EXECUTIVE MANAGEMENT

## **CHRIS LODDER, PRESIDENT & CEO**

- 25+ Years Of Greenfield And Brownfield Exploration
- President Of Talisker Exploration Services, Former Exploration Manager For The Americas For AngloGold Ashanti
- The Group Discovered 28 M Oz. In Greenfield And Brownfield Discoveries

## **MAGGIE LAYMAN, VP EXPLORATION, P.GEO, QP**

- 12 Years Experience Greenfield And Brownfield Exploration
- Various Geology Roles - Previously Barkerville's Exploration Manager
- Previously With Independence Gold And Vale

## **DAVE ROULEAU, VP OPERATIONS, P.ENG**

- 30 Years Mine Operations Management And Engineering
- BC, Alberta, Australia Mine Management
- Former VP Operations At Gibraltar Mine

## **JASON KOSEC, VP CORPORATE DEVELOPMENT**

- 9 Years Experience Greenfield, Brownfield Exploration And Mine Operations
- Former Sr. Geologist And Chief Mine Geologist At Barkerville
- Previously Project Geologist With IAMGOLD

## **FRANÇOIS VÉZINA, COO, P.ENG.**

- Mining Engineer And MBA
- 16 Years Of Experience In Underground And Open Pit Mines
- Various Roles In Engineering, Supervision And Management For The Design And Construction Of Mine Project In Canada, Mexico And Finland

## **ANDRES TINAJERO, CFO, CPA, MBA, ICD.D**

- 20+ Years Of Financial And Risk Management Of Public Companies Across North America. He Has Supported A Range Of Industries Including: Natural Resources, Manufacturing & Technology

## **CHRIS PHARNESS, VP ENVIRONMENT & SUSTAINABILITY**

- 20+ Years In Environmental Management In Mitigation With British Columbia
- Responsible For Permitting, Government, Community And First Nations Relations





# **BARKERVILLE GOLD MINES**

**CHRIS LODDER PRESIDENT & CEO**

**CLODDER@BARKERVILLEGOLD.COM**

---

**EXPERIENCED LEADERSHIP**

**FINANCIALLY AND TECHNICALLY SUPPORTIVE  
MAJOR SHAREHOLDERS BASE**

**SUSTAINABLE - LOW IMPACT – HIGH-MARGIN  
MINING**

**STRONG SOCIO-ECONOMIC BENEFITS**

**FOCUSED & DISCIPLINED EXPLORATION ON  
HIGH QUALITY TARGETS**

# APPENDICIES

---

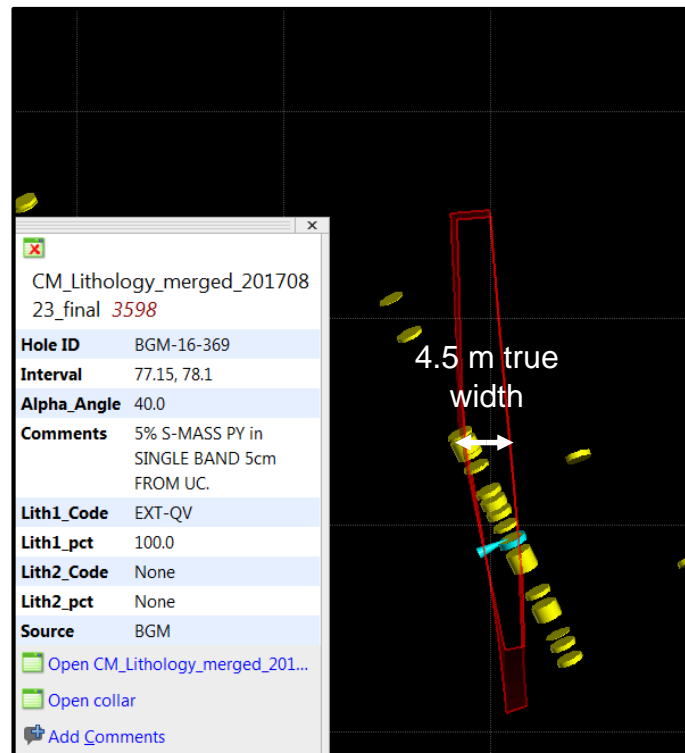
# ANALYST & COVERAGE

## Analyst Coverage

- Mick Carew – Haywood
- George Toppings – I.A.
- Kevin Mackenzie - Canaccord
- Tyron Breytenbach - Cormark

# VEIN CORRIDORS

- Vein corridors are modelled, not individual veins.
- Minimum thickness 2 meters

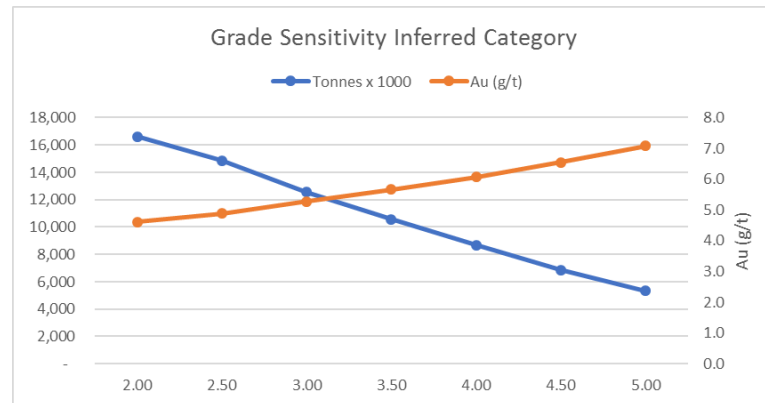
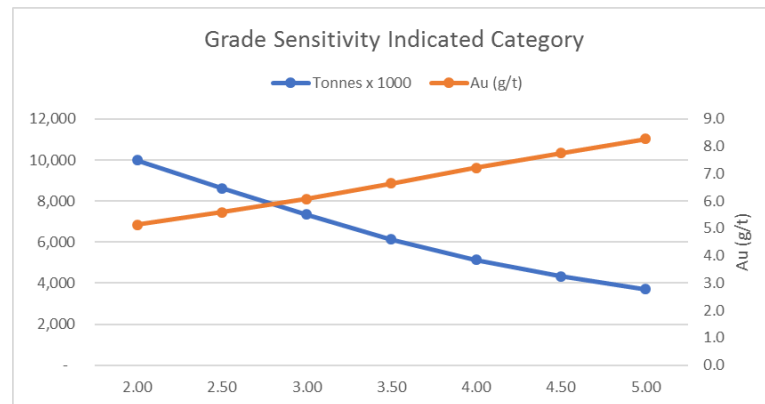




# GRADE TONNAGE SENSITIVITY: COW AND ISLAND

| INDICATED CATEGORY |                  |            |                  |
|--------------------|------------------|------------|------------------|
| Cut-Off            | Tonnes           | Au g/t     | Au Oz            |
| 2.00               | 10,002,854       | 5.1        | 1,649,358        |
| 2.50               | 8,635,373        | 5.6        | 1,550,851        |
| <b>3.00</b>        | <b>7,337,559</b> | <b>6.1</b> | <b>1,435,891</b> |
| 3.50               | 6,134,508        | 6.6        | 1,310,397        |
| 4.00               | 5,127,800        | 7.2        | 1,189,431        |
| 4.50               | 4,336,196        | 7.8        | 1,081,425        |
| 5.00               | 3,697,610        | 8.3        | 984,153          |

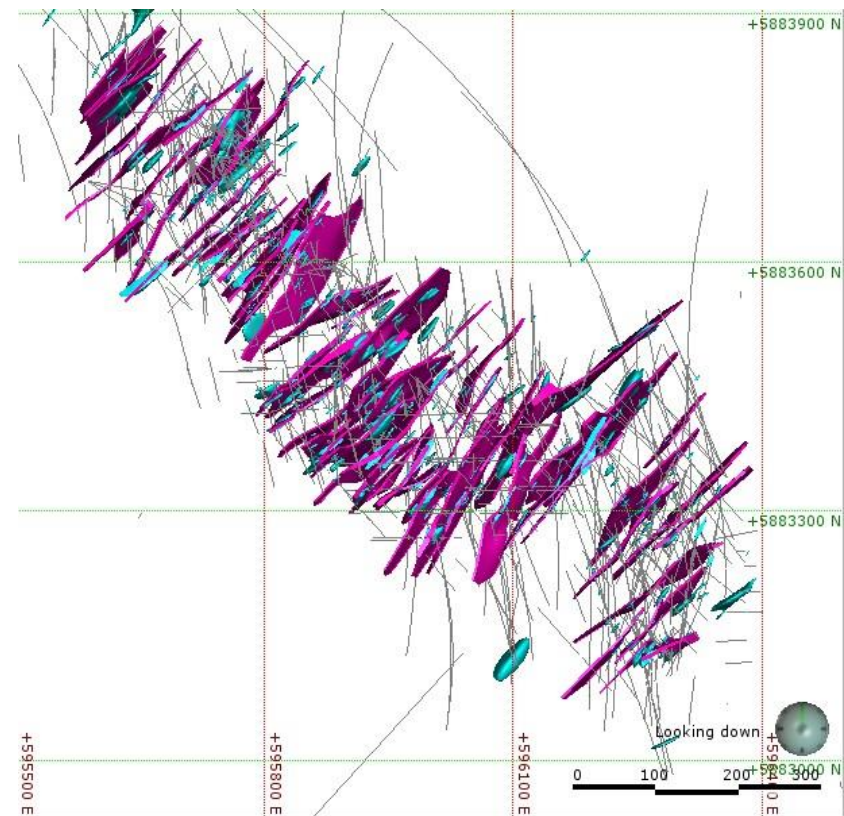
| INFERRED CATEGORY |                   |            |                  |
|-------------------|-------------------|------------|------------------|
| Cut-Off           | Tonnes            | Au g/t     | Au Oz            |
| 2.00              | 16,603,454        | 4.6        | 2,459,929        |
| 2.50              | 14,874,794        | 4.9        | 2,335,571        |
| <b>3.00</b>       | <b>12,557,871</b> | <b>5.3</b> | <b>2,130,422</b> |
| 3.50              | 10,557,032        | 5.7        | 1,921,391        |
| 4.00              | 8,688,051         | 6.1        | 1,696,009        |
| 4.50              | 6,873,449         | 6.5        | 1,447,453        |
| 5.00              | 5,326,351         | 7.1        | 1,212,054        |



# VEIN MODELLING PROCESS

**Cow Mountain** drill holes and current vein models

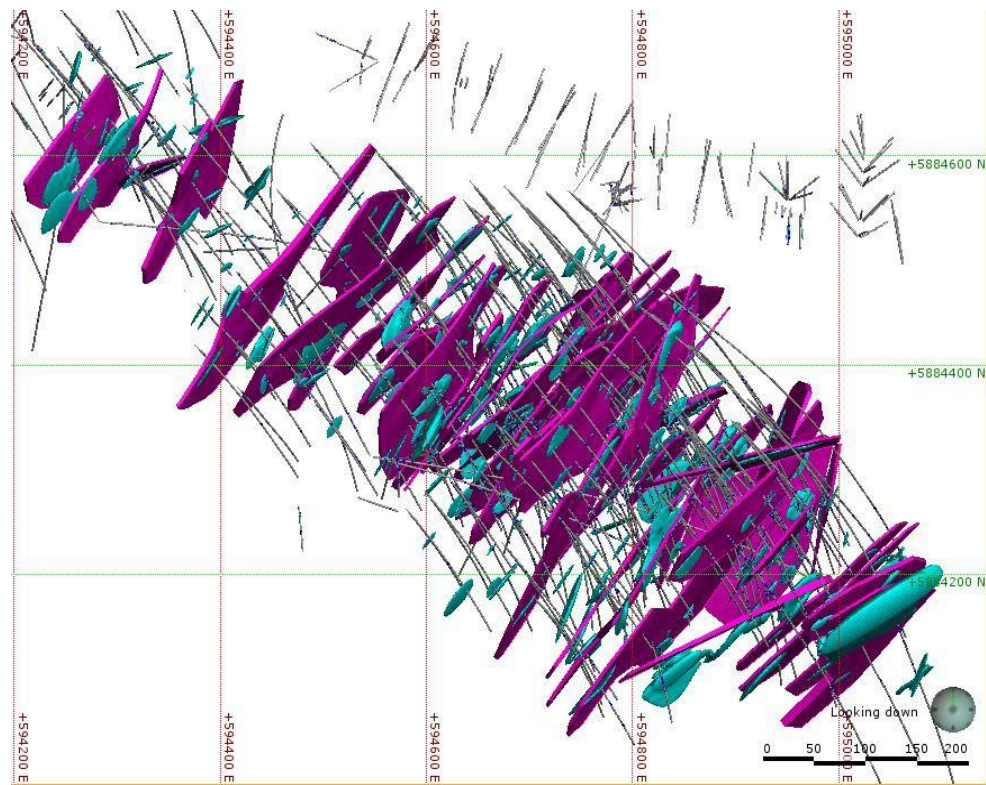
- Modeled Vein Zones (Purple)
- 3 g/t Indicator Interpolant (Turquoise)



# VEIN MODELLING PROCESS

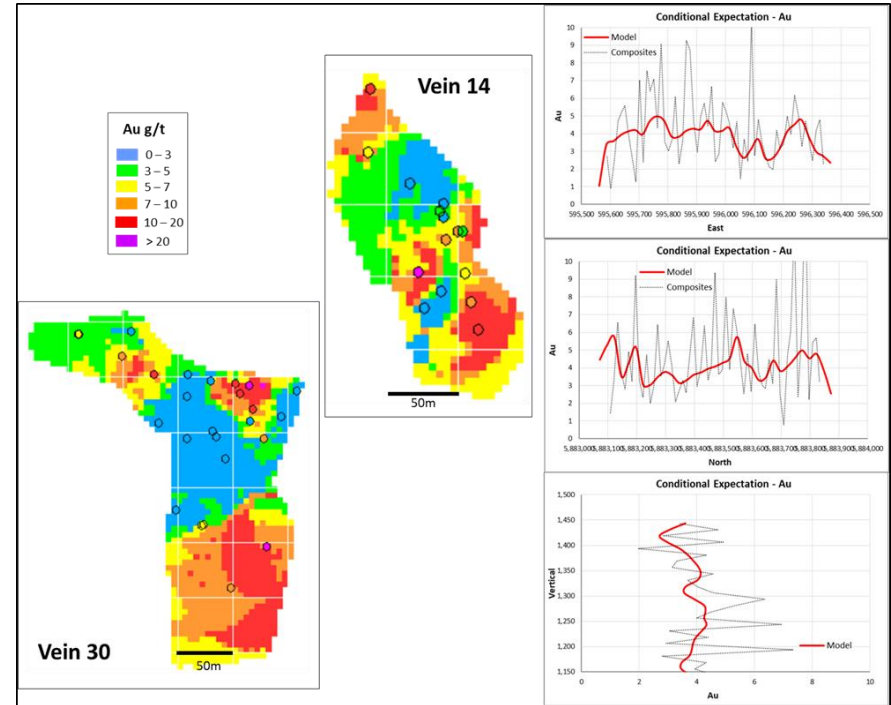
## Island Mountain (Shaft Zone) drill holes and current vein models

- Modeled Vein Zones (Purple)
- 3 g/t Indicator Interpolant (Turquoise)



# RESOURCE ESTIMATION

- Block models for each zone, Mosquito, Shaft, Valley, Cow
- Anisotropic search to allow for the search ellipses to closely follow the vein models
- Parent block size, 5 x 5 x 5





# RESOURCE ESTIMATION

- The inferred and indicated resource categories were constructed manually for each vein corridor.
- Indicated: two drill holes with a minimum distance of approximately 25 m to the nearest drill hole
- Inferred: blocks must be informed by two drill holes with a minimum distance of approximately 50 m to the nearest drill hole.

