

An aerial photograph of a mining camp situated in a lush, green forested area. The camp features several small, dark-colored buildings and a large number of long, white modular units arranged in rows. The camp is surrounded by dense evergreen trees and is adjacent to a large, calm lake. A yellow triangular graphic element is positioned on the left side of the image, pointing towards the text.

# LEADING EXPLORATION IN JAMES BAY, QUEBEC

EASTMAIN RESOURCES INC. TSX:ER; OTCQX:EANRF

CORPORATE PRESENTATION – NOVEMBER 2017





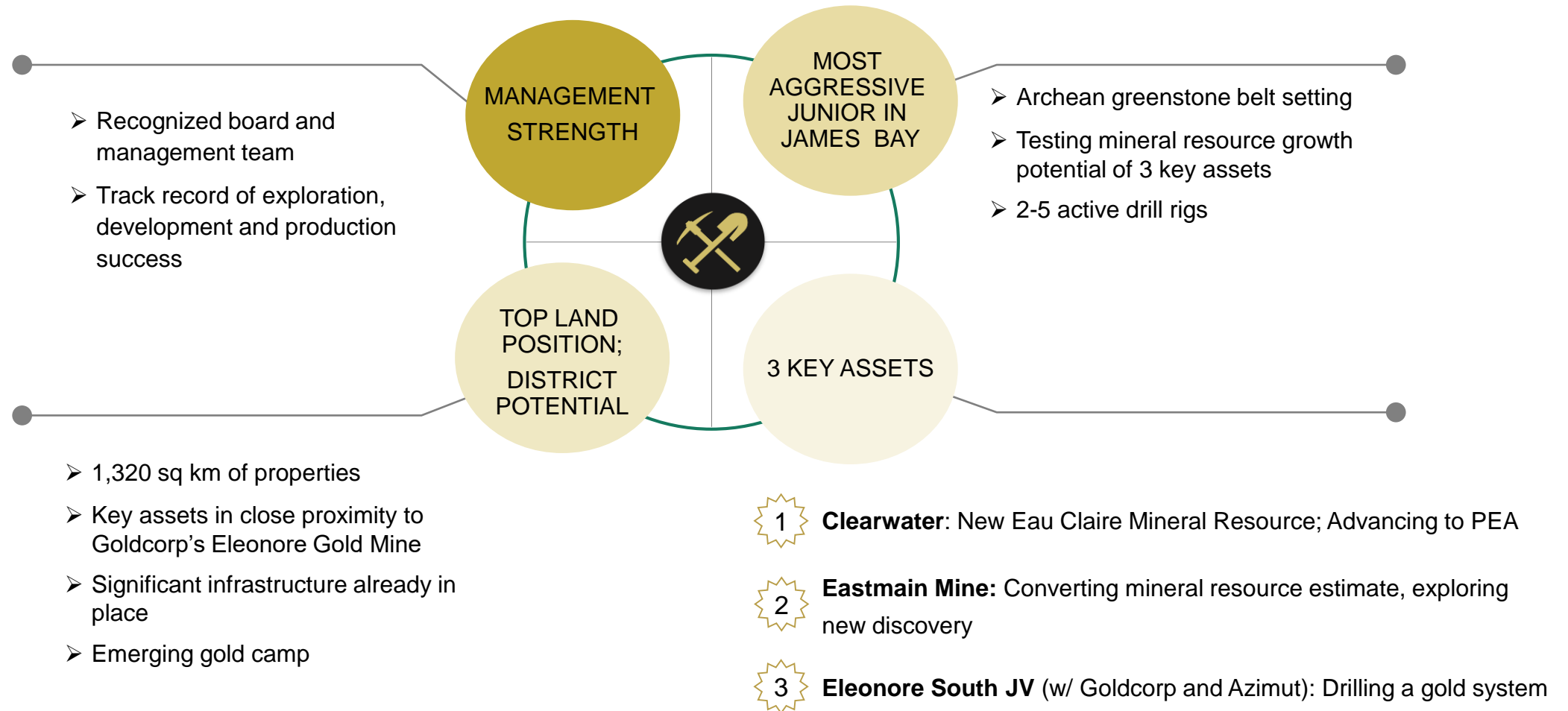
# FORWARD-LOOKING STATEMENTS

Certain information set forth in this presentation may contain forward-looking statements that involve substantial known and unknown risks and uncertainties. Forward-looking statements consist of statements that are not purely historical, including statements regarding beliefs, plans, expectations or timing of future plans, and include, but not limited to, statements with respect to any potential director nominations, actions taken in respect of director nominations received by Eastmain, actual results of current and future exploration activities at the Company's properties, and the potential success of the Company's future exploration and development strategies. These forward-looking statements are subject to numerous risks and uncertainties, certain of which are beyond the control of Eastmain, including, but not limited to the results of matters to be considered at the upcoming annual and special meeting of shareholders of Eastmain, the impact of general economic conditions, industry conditions, dependence upon regulatory approvals, the availability of financing, timely completion of proposed studies and technical reports, and risks associated with the exploration, development and mining industry generally such as economic factors as they affect exploration, future commodity prices, changes in interest rates, safety and security, political, social or economic developments, environmental risks, insurance risks, capital expenditures, operating or technical difficulties in connection with development activities, personnel relations, the speculative nature of gold exploration and development, including the risks of diminishing quantities of grades of Mineral Resources, contests over property title, and changes in project parameters as plans continue to be refined. Readers are cautioned that the assumptions used in the preparation of such information, although considered reasonable at the time of preparation, may prove to be imprecise and, as such, undue reliance should not be placed on forward-looking statements. The Company assumes no obligation to update such information, except as may be required by law.



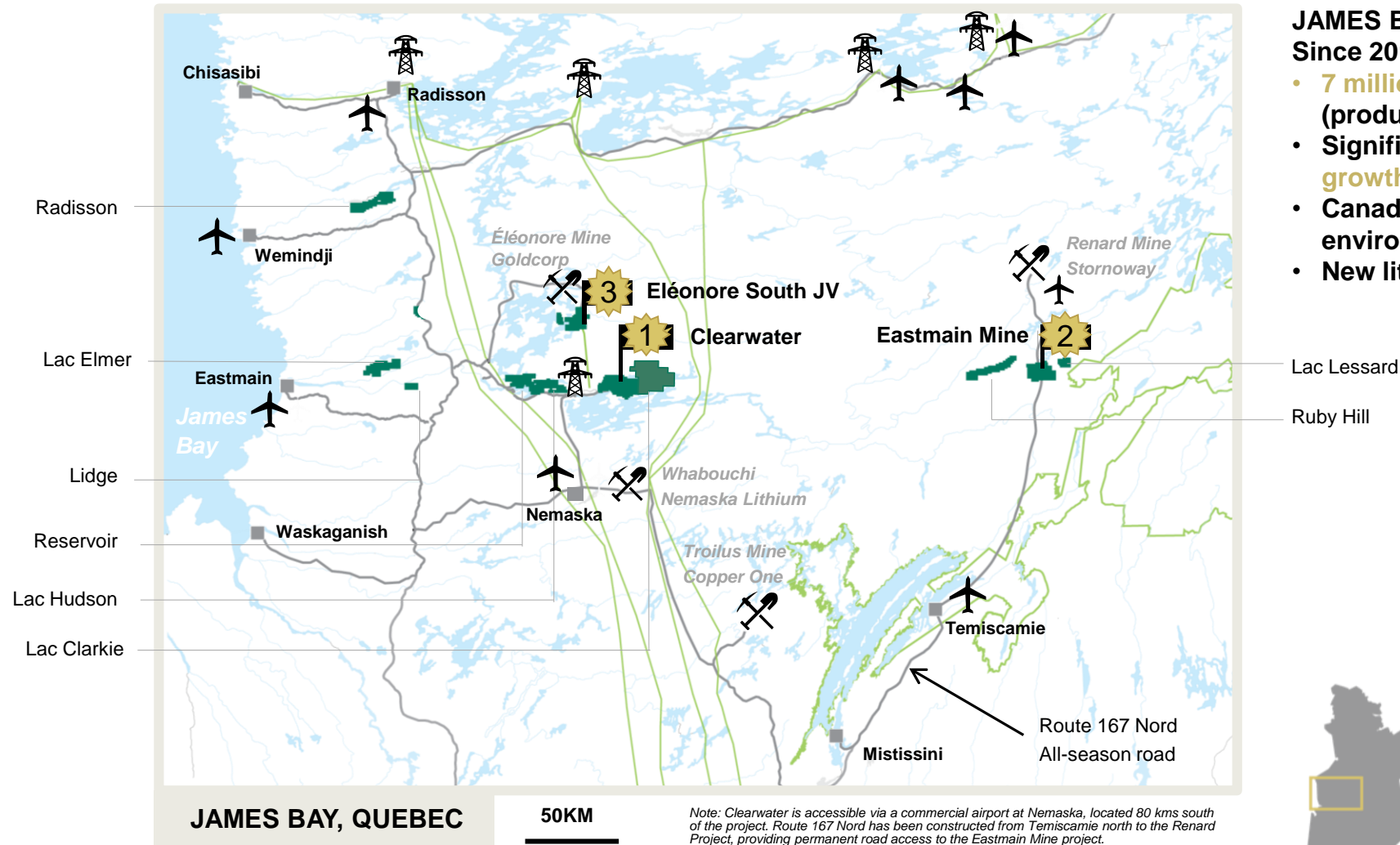
# EASTMAIN RESOURCES

## AGGRESSIVE EXPLORATION IN JAMES BAY, QUEBEC



# AN EMERGING GOLD CAMP

## SUPERIOR INFRASTRUCTURE – HIGH QUALITY ASSETS



### JAMES BAY GOLD CAMP

Since 2014:

- **7 million oz of gold** defined from ONE Mine (production and total reserves)
- Significant potential for **mineral resource growth**
- **Canadian shield and greenstone belt** environment
- New lithium mine to the south of ER assets

Lac Lessard  
Ruby Hill

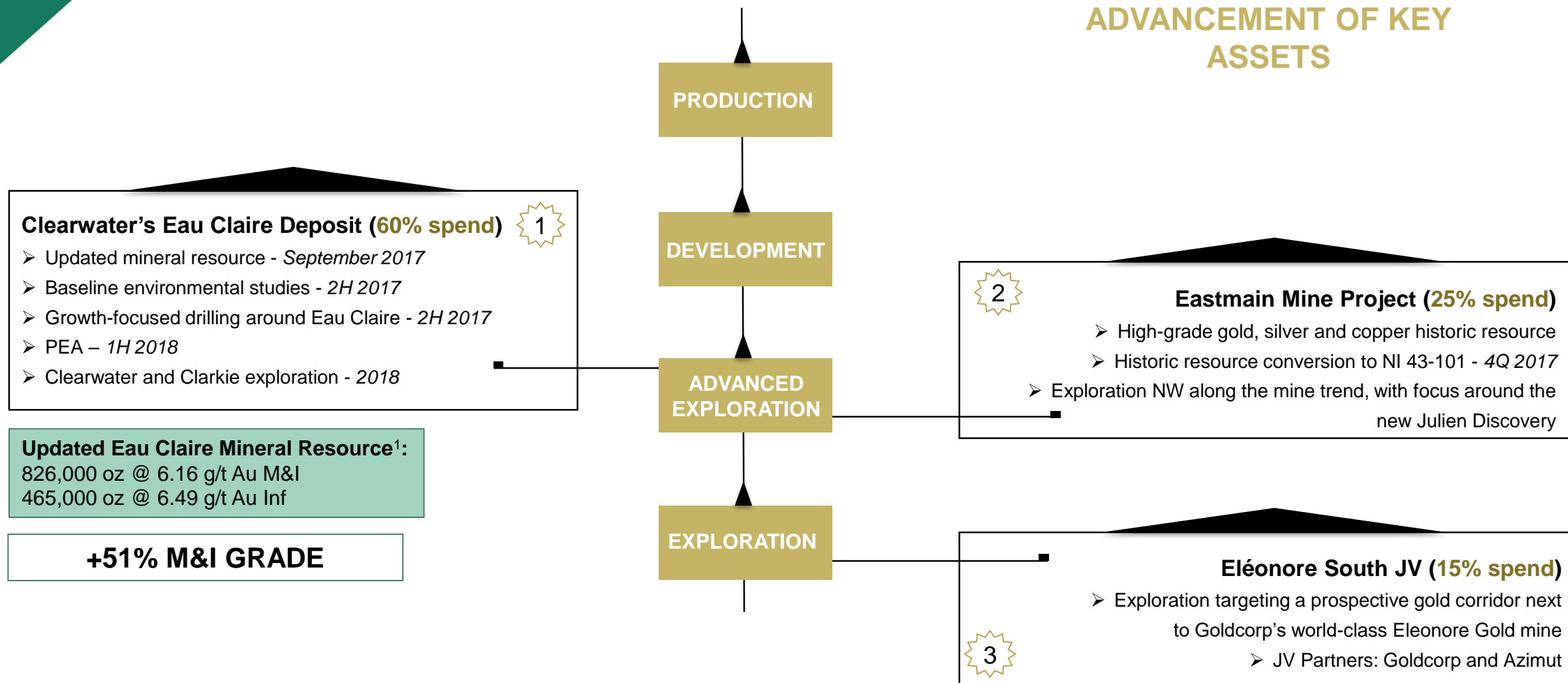


**Total ER property portfolio**  
**127,721 hectares**

# 3 KEY ASSETS

ACCELERATING THE MOMENTUM

## SYSTEMATIC ADVANCEMENT OF KEY ASSETS



Note 1: Updated Eau Claire mineral resource estimate, Clearwater Project by SGS Geostat. Effective date August 25, 2017, press released September 11, 2017.

# EASTMAIN CAPITAL STRUCTURE

TSX:ER; OTCQX:EANRF

CAPITAL STRUCTURE	November 1, 2017
Shares outstanding	193,125,146
Options (W Avg Life – 5.4 yrs, \$0.69)	10,760,001
Warrants (expiry 11/10/18 , \$0.50)	6,899,998
Fully-Diluted	211,011,813
Market Capitalization (20-day VWAP)	\$60 million
Share Price (20-day VWAP)	\$0.31
52 Week High/Low	\$0.70 - \$0.28
Daily Avg Vol (20-day avg)	1.08 million

## ANALYST SUPPORT



## CASH & MARKETABLE SECURITIES (as of November 1, 2017)

**C\$7.3 M**

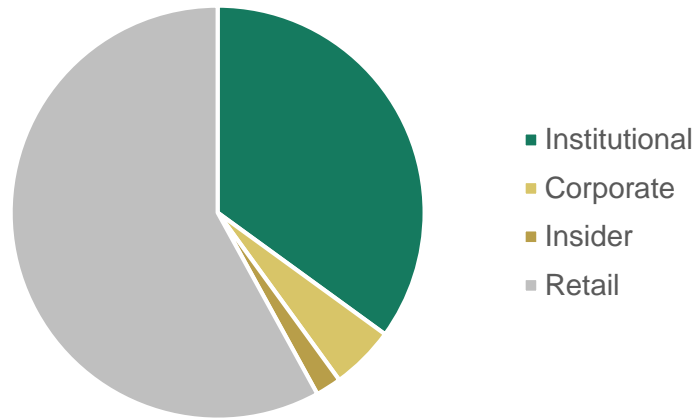
Jan 01, 2017 - Nov 02, 2017 • ER:-0.23|-44.12%

ANALYST PT (CONS) : \$1.01

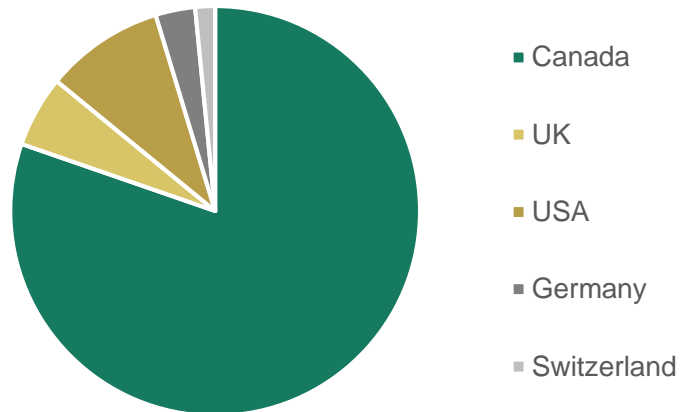


# SHAREHOLDER SUPPORT

Shareholder



Geographic Location



## INSTITUTIONAL SHAREHOLDERS - 35%

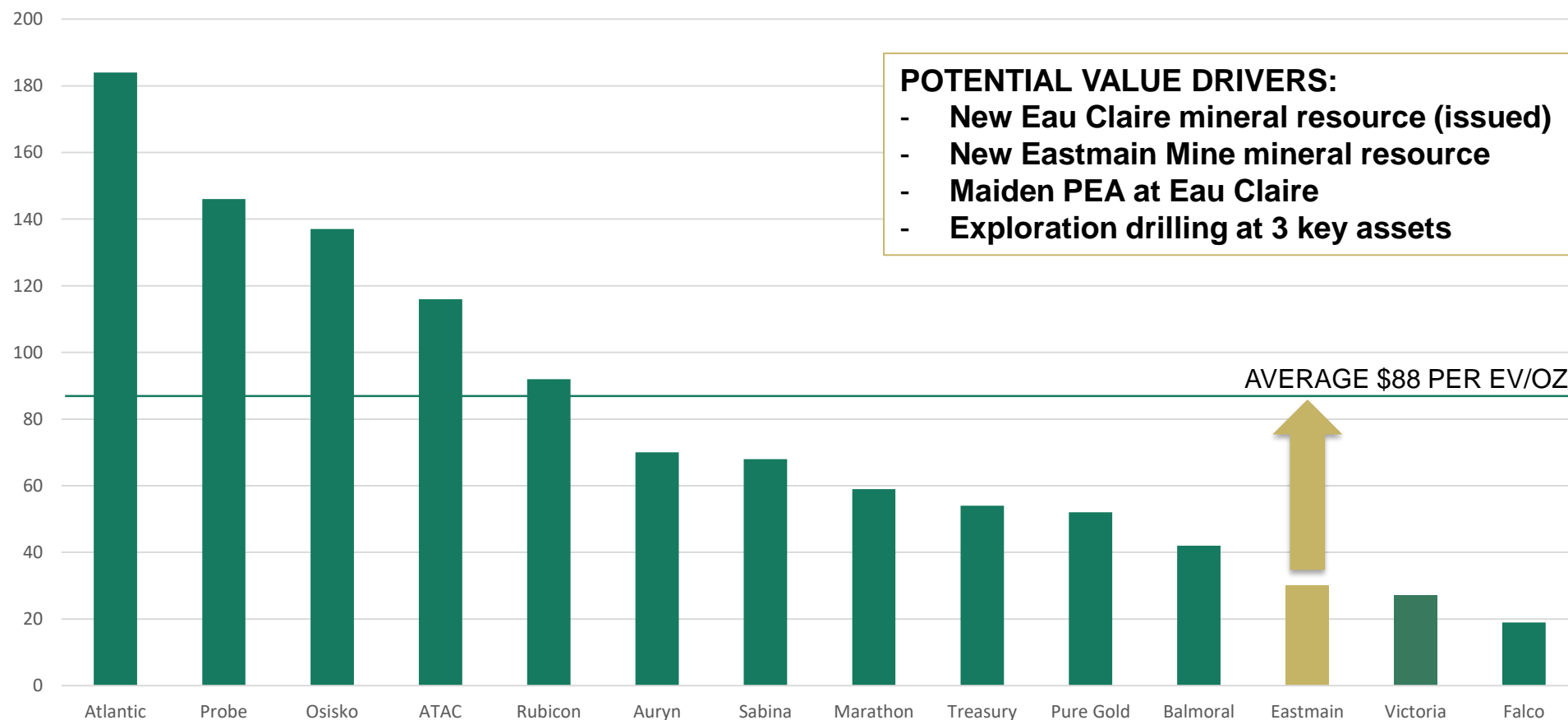
Eldorado Gold	8.9 million	4.6%
Van Eck	8.1 million	4.2%
Earth Resources Investment Fund	6.4 million	3.3%
Konwave Gold 2000	2.8 million	1.5%
Caisse du Depot (Sodémex)	2.6 million	1.3%
Mackenzie Investments	2.0 million	1.0%
AGF	1.6 million	0.8%
US Global	1.5 million	0.8%
Commodity Discovery Fund	1.5 million	0.8%
Evanachan	1.0 million	0.5%
SIDEX	0.9 million	0.5%
BMO Asset Management	0.6 million	0.3%
Curvature Funds	0.5 million	0.3%

## INSIDERS - 2%

Claude Lemasson	1.6 million	0.8%
Blair Schultz	1.5 million	0.8%
Mike Hoffman	0.3 million	0.2%
Joe Fazzini	0.3 million	0.2%
Laurie Curtis	0.2 million	0.1%
Bill McGuinty	0.1 million	0.1%

# SIGNIFICANT GROWTH OPPORTUNITY – EV/OZ

UPCOMING CATALYSTS SHOULD INCREASE VALUE IN LINE WITH PEERS



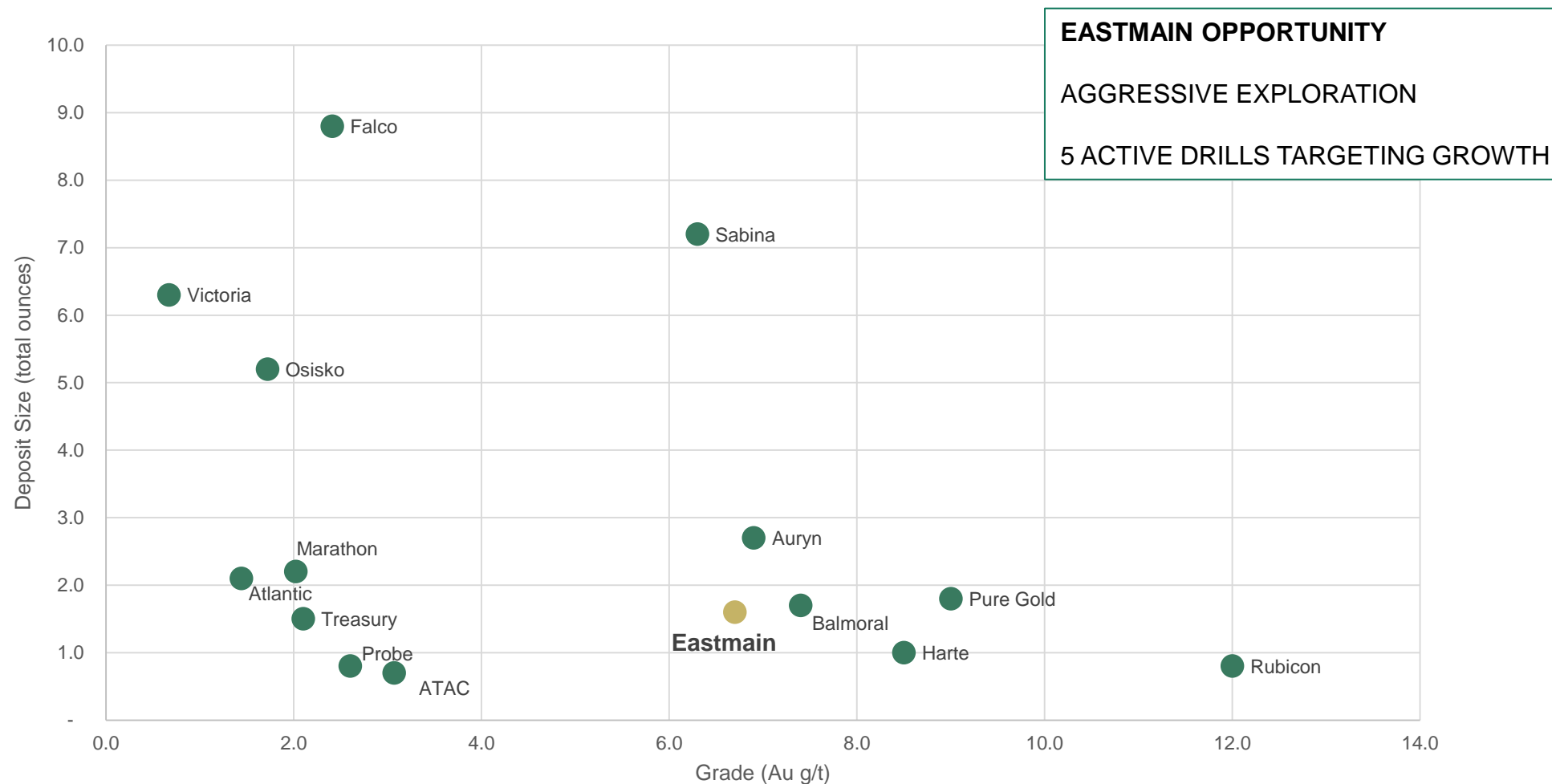
Data compiled by Laurentian Securities based on most recent company financial reports, Capital IQ and LBS compilation September 11, 2017.

\*Eastmain data Includes Clearwater MI&I mineral resources (October 2017) and Eastmain Mine historic resources (255,000 oz @ 10 g/t Au).



# UNDervalued OPPORTUNITY AMONGST PEERS

## GRADE & DEPOSIT SIZE



Data compiled by Laurentian Securities based on most recent company financial reports, Capital IQ and LBS compilation October 2017.

\*Eastmain data Includes Eau Claire MI&I mineral resources (see Slide11) and Eastmain Mine historic resources (255,000 oz @ 10 g/t Au).

# CLEARWATER PROJECT

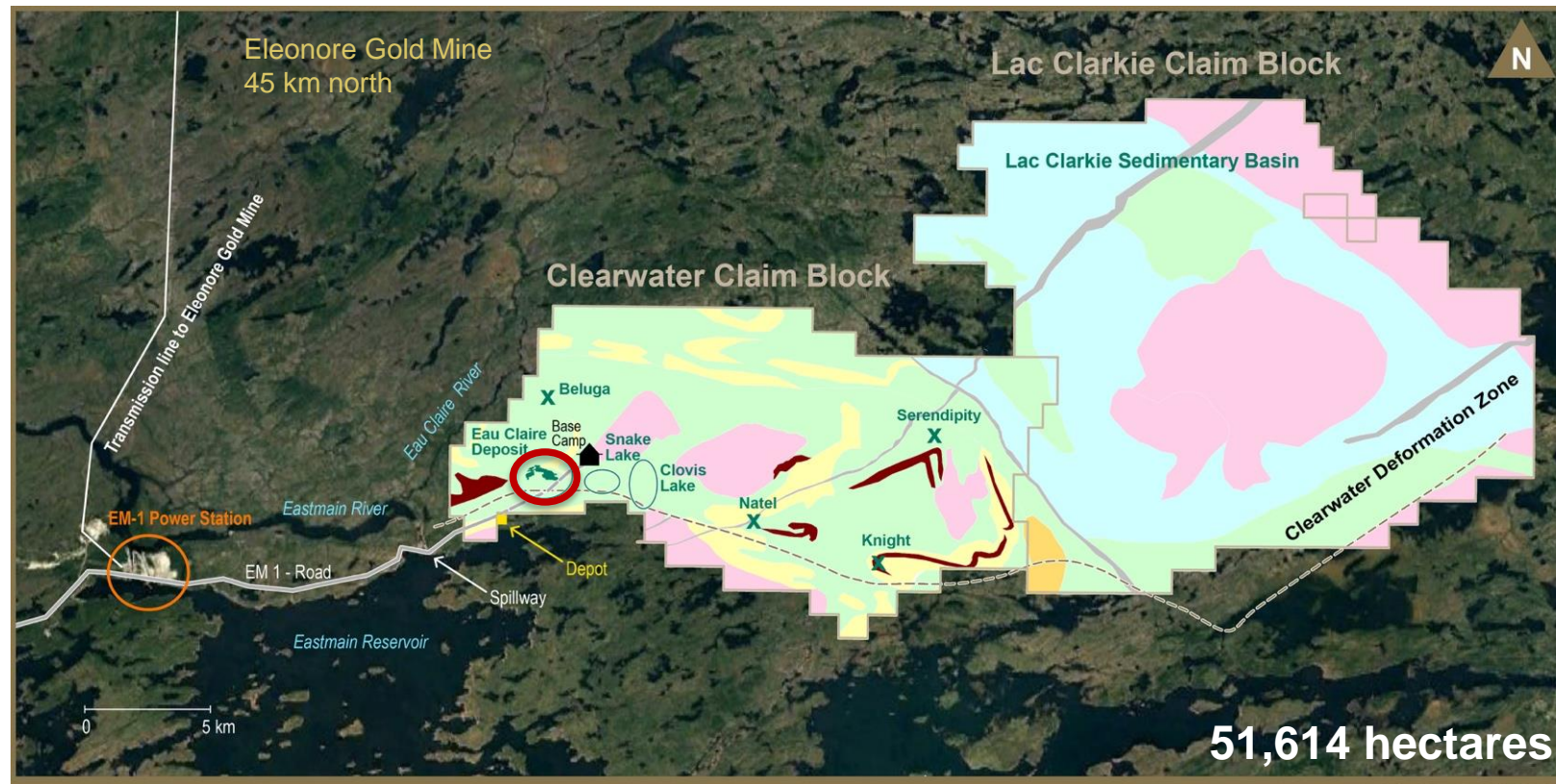
## STRATEGICALLY POSITIONED AND INFRASTRUCTURE-RICH

### DISTRICT-SIZED POTENTIAL IN SAFE JURISDICTION

- Advancing the Eau Claire deposit & testing the nearby targets at Clearwater and Clarkie
- 40 km major structure (deformation zone) along southern border of the properties

### READY-INFRASTRUCTURE:

- 30-person camp incl. full-kitchen, core-shack and cabins
- Hydro-power (20 kms away), all-season roads and nearby airports



# INCREASED GRADE AND CONFIDENCE

## REALISTIC AND CONSERVATIVE APPROACH

- Tighter wire frames
- Tighter search ellipses with composites
- Minimum mining width to 2.0 m
- Increased open pit mining cost

Total Mineral Resource Estimate<sup>(1)</sup>

Category	Tonnes	Grade (g/t Au)	Contained Au (oz)
Measured	932,000	6.67	200,000
Indicated	3,238,000	6.01	626,000
<b>Measured &amp; Indicated</b>	<b>4,170,000</b>	<b>6.16</b>	<b>826,000</b>
Inferred	2,227,000	6.49	465,000

Mineral Resources for a potential Open Pit and Underground scenario

Category	Open Pit <sup>(2)(3)(4)</sup> (surface to 150 m)			Underground <sup>(2)(3)(4)</sup> (150 m – 860 m)		
	Tonnes	Grade (g/t Au)	Contained Au (oz)	Tonnes	Grade (g/t Au)	Contained Au (oz)
Measured	618,000	6.69	133,000	314,000	6.64	67,000
Indicated	610,000	5.10	100,000	2,628,000	6.22	526,000
<b>Measured &amp; Indicated</b>	<b>1,228,000</b>	<b>5.90</b>	<b>233,000</b>	<b>2,942,000</b>	<b>6.26</b>	<b>593,000</b>
Inferred	39,000	4.78	6,000	2,188,000	6.52	459,000
	<b>20% of total mineral resource</b>			<b>80% of total mineral resource</b>		

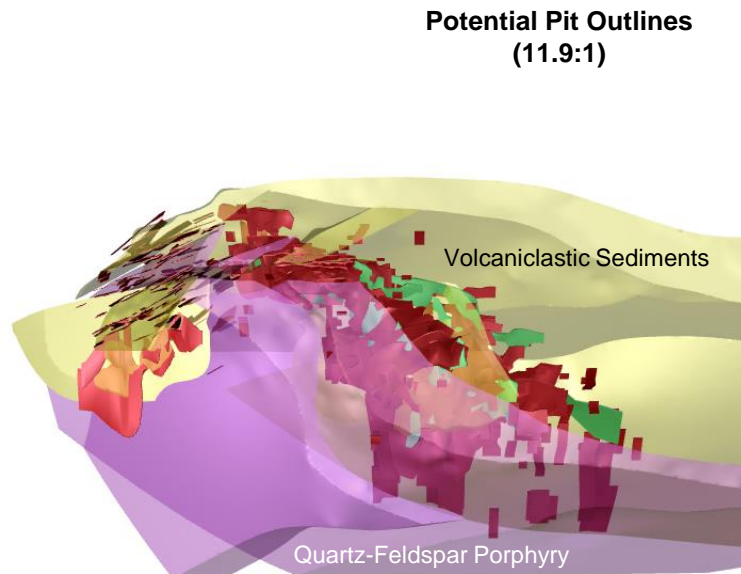
RESOURCE PARAMETERS	
Exchange rate	\$0.80 USD = CAD \$1.00
Gold price (per ounce)	\$1,250 USD / \$1,563 CAD
Estimation method	ID <sup>3</sup> interpolation
Drill spacing:	
450W outcrop (0 m – 100 m depth)	12.5 m – 25 m
Deposit core (100 m – 400 m)	25 m
Balance of the deposit	>25 m
Block model	5 m x 5 m x 5 m
Composites required:	
Measured	6 composites, 2 drill holes, w/in 20 m x 20 m x 5 m
Indicated	6 composites, 2 drill holes, w/in 45 m x 45 m x 15 m
Inferred	3 composites, 1 drill hole, w/in 100 m x 100 m x 20 m
Open pit cut-off grade	0.5 g/t Au
Underground cut-off grade	2.5 g/t Au
Process recovery	95%
Assumed operating costs	
Open pit mining cost (per tonne mined)	\$2.80 USD / \$3.50 CAD
Underground mining cost (per tonne mined)	\$56.00 USD / \$70.00 CAD
General & administrative (per tonne processed)	\$4.00 USD / \$5.00 CAD
Processing cost (per tonne processed)	\$16.00 USD / \$20.00 CAD
Mining loss / dilution (open pit)	5% / 5%
Assumed overall pit slope angle	50 degrees
Capped grades:	
450W Zone	120 g/t Au (QT); 45 g/t Au (HGS, NW, WNW, Extra)
850W Zone	40 g/t Au (QT); 10 g/t Au (others)

- 1) Mineral resources which are not mineral reserves do not have demonstrated economic viability. All figures are rounded to reflect the relative accuracy of the estimate. Composites have been capped where appropriate.
- 2) Open pit mineral resources are reported at a cut-off grade of 0.5 g/t gold within a conceptual pit shell and underground mineral resources are reported at a cut-off grade of 2.5 g/t gold outside the conceptual pit shell. Cut-off grades are based on a gold price of US\$1,250 per ounce, a foreign exchange rate of US\$0.80, and a gold recovery of 95%.
- 3) The results from the pit optimization are used solely for the purpose of testing the "reasonable prospects for economic extraction" by an open pit and do not represent an attempt to estimate mineral reserves. There are no mineral reserves on the Clearwater Property. The results are used as a guide to assist in the preparation of a mineral resource statement and to select an appropriate resource reporting cut-off grade.
- 4) Pit optimization parameters and cut-off grades are outlined in the Resource Parameter table.

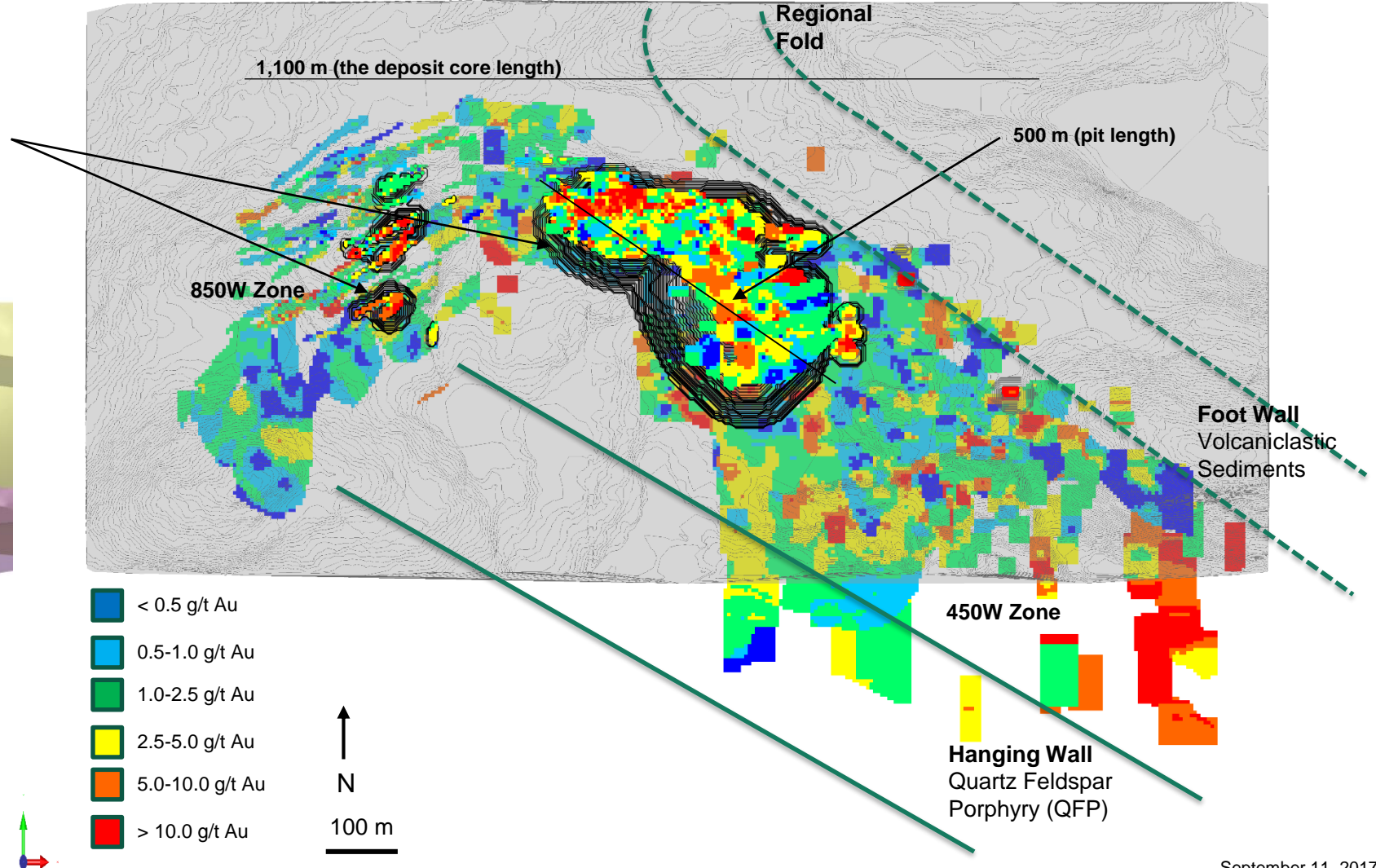


# INCREASED GRADE AND CONTINUITY OF AU MINERALIZATION

## STRICTER PARAMETERS WITHIN MAJOR CONTROLLING FEATURES



Eau Claire Deposit:  
Plan view showing controlling structures



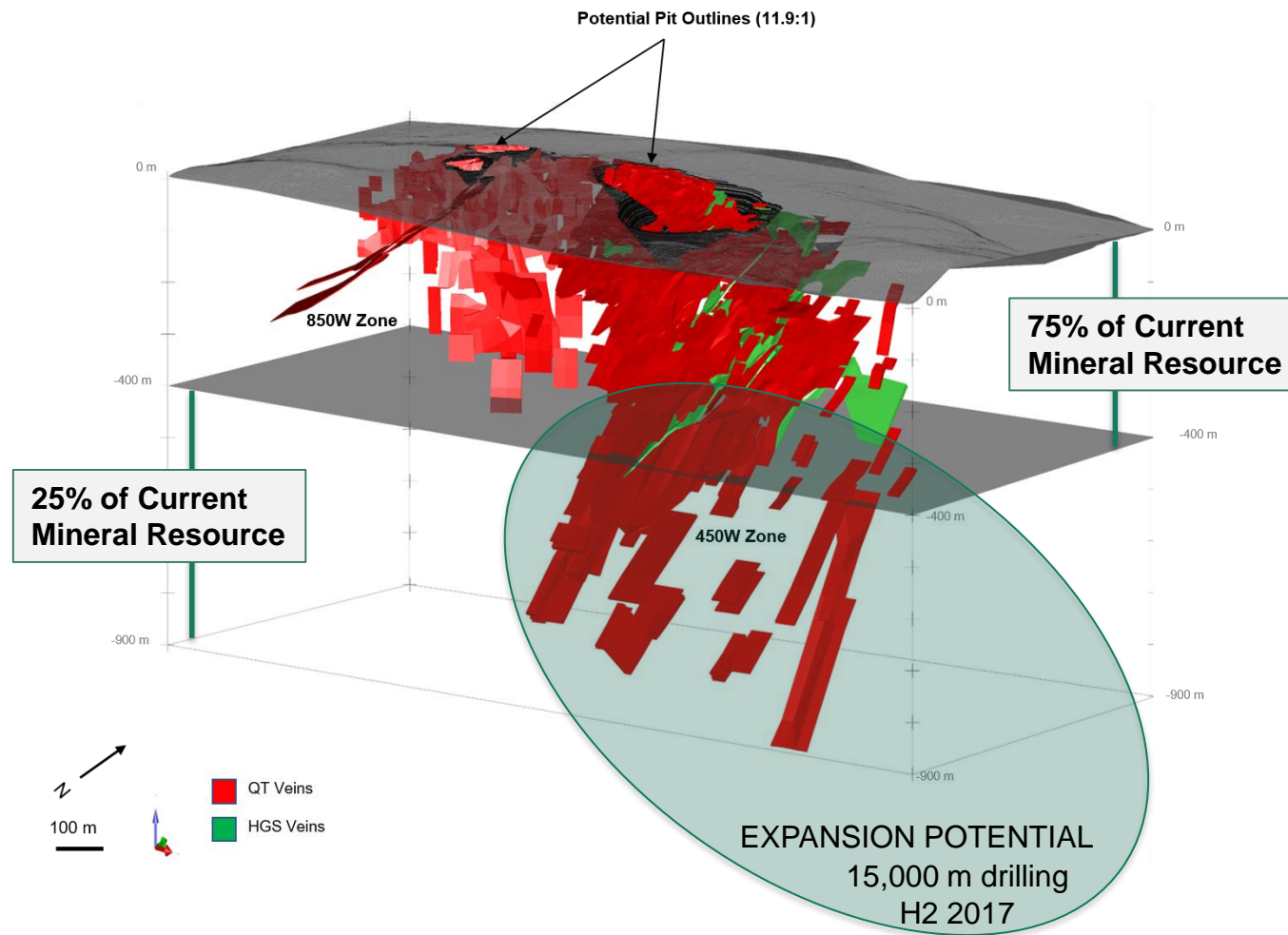
Plan view of the Eau Claire Deposit Block Model, Mineral Resources Projected to Surface

September 11, 2017

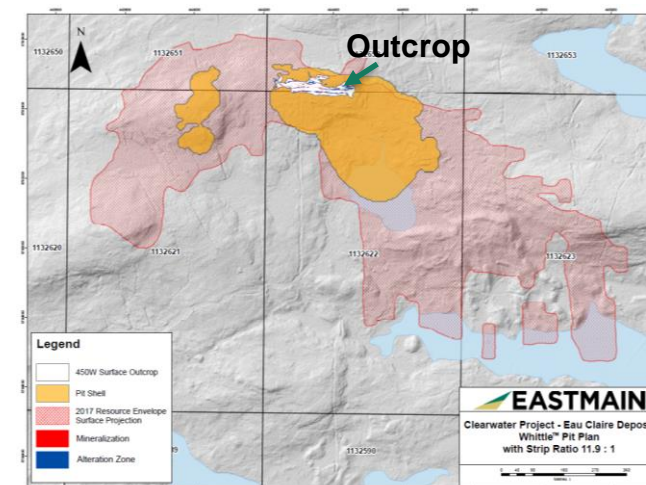
# NEW UNDERSTANDING OF HGS VEINS

## UPDATED POTENTIAL OPEN PIT SCENARIO ~150 m DEPTH

### Rotated Long Section of the Eau Claire Deposit's Vein Wire Frames



**2,500 AU OZ  
PER VERTICAL METRE  
IN TOP 400 METRES**





# NEW INTERPRETATION OF MAIN VEINS

## HGS VEINS & QT VEINS

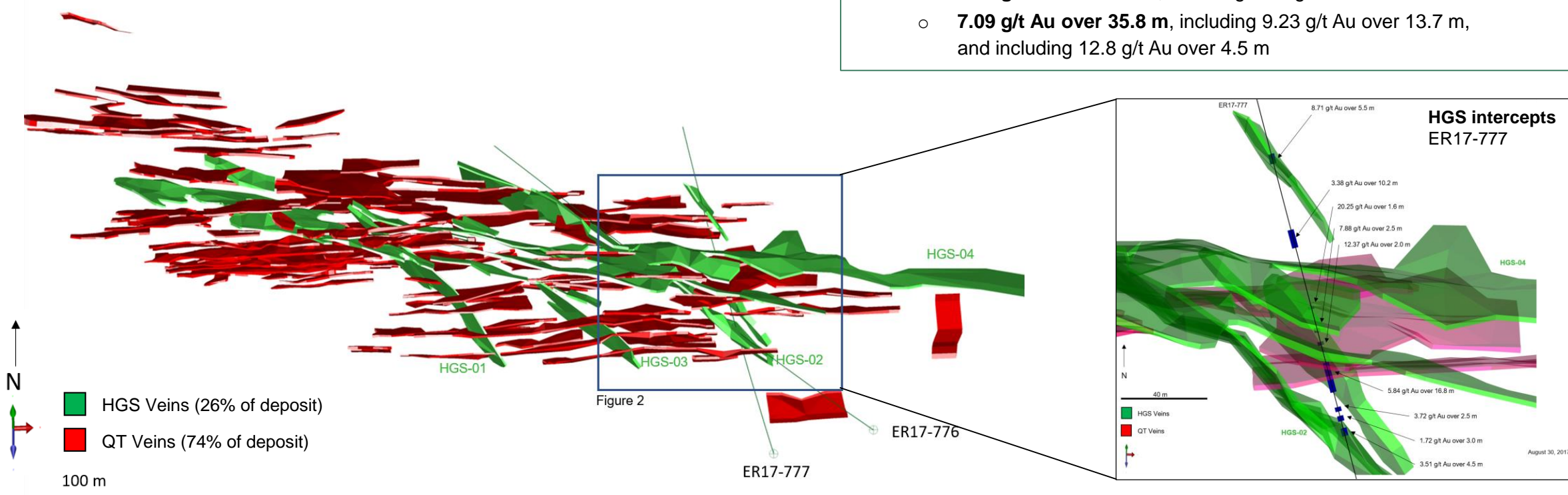
### High Grade Schist (HGS) Veins:

Wider (average 3-4 m), high grade, more continuous

### Quartz-Tourmaline (QT) Veins:

Width (average 1.5 m), high grade

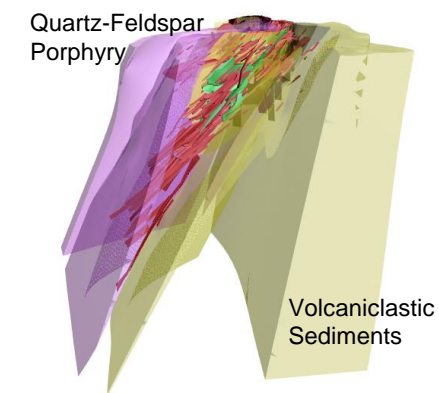
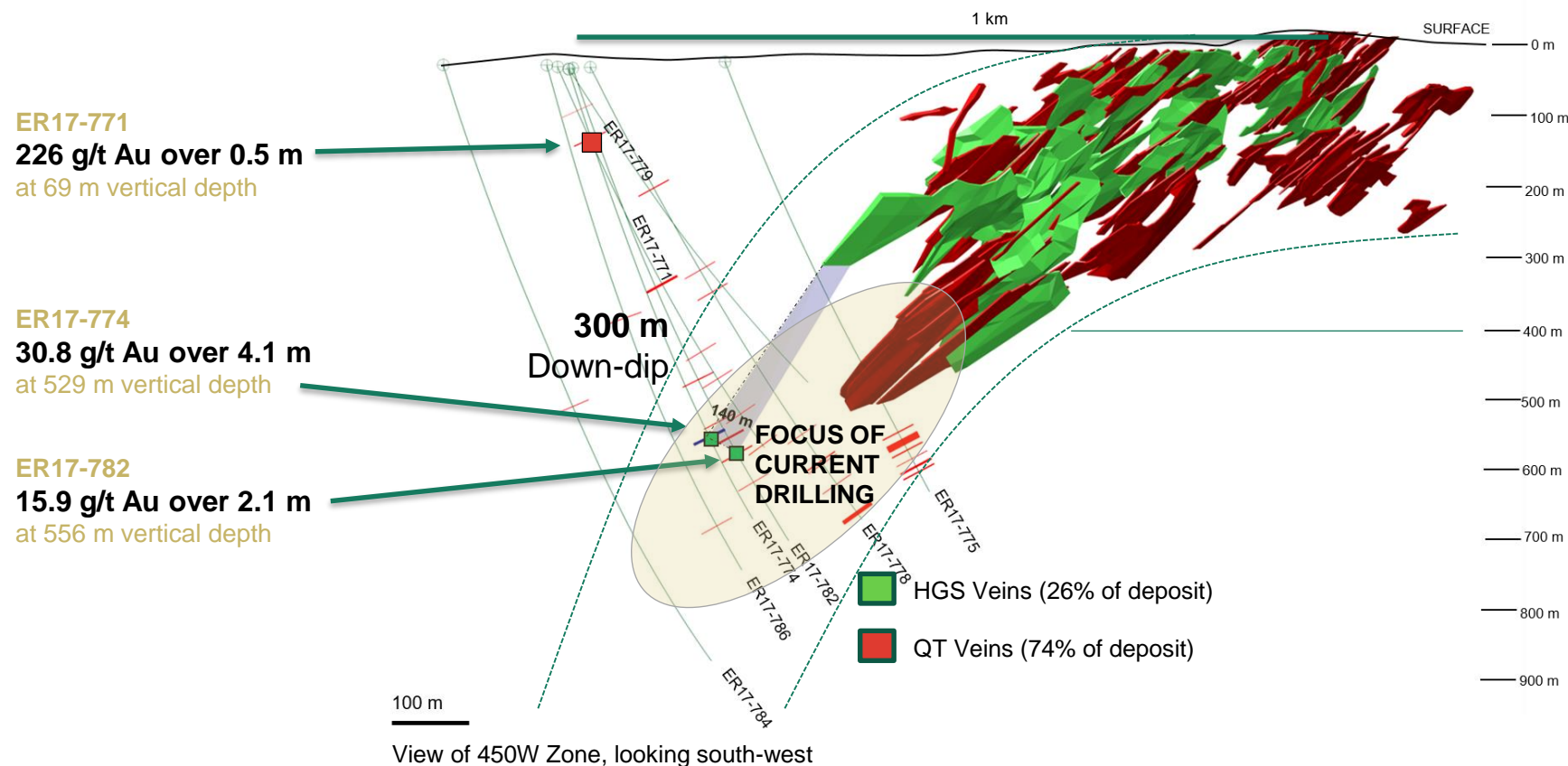
- **At least 4 HGS veins;** Widths ranges up to 13 m
- Recent drilling demonstrates **high grades** and **broad intervals**
- **ER17-776** – Drilled along HGS-02 vein over 143 m and includes multiple major intercepts:
  - **6.25 g/t Au over 4.5 m**, including 9.36 g/t Au over 1.5 m
  - **15.3 g/t Au over 6.0 m**, including 41.6 g/t Au over 2.0 m
  - **3.98 g/t Au over 8.3 m**, including 8.70 g/t Au over 2.5 m
  - **7.09 g/t Au over 35.8 m**, including 9.23 g/t Au over 13.7 m, and including 12.8 g/t Au over 4.5 m



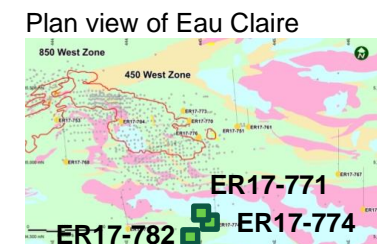
# EAU CLAIRE: EXPLORATION OPPORTUNITY – 15,000 m DRILLING PROGRAM

## MINERALIZATION CONTINUES AT DEPTH

- Deposit plunges steeply SE, between volcanics and metasediments
- New HGS mineralization 300 m down-dip and 140 m apart
- New shallow mineralization 1 km from 450W Zone outcrop
- Deep Domain drilling successful



View of 450W Zone looking west,  
including controlling structures



# HIGHLIGHTS AND CATALYSTS

## EXPLORING THE CLEARWATER PROPERTY

### EXPLORATION OBJECTIVES

**GROWTH** of mineral resources

**EXPANSION** of vein limits

**NEW SCHIST VEINS** potentially analogous to Integra's Sigma deposit

### ACHIEVED MILESTONES

Mineral resource update (Issued Sept 11, 2017)

### UPCOMING CATALYSTS

Growth-focused drilling program (2H 2017)

Maiden Preliminary Economic Assessment (1H 2018)

**HIGH-GRADE SCHIST (HGS) VEIN**



**Clearwater's 30-man camp**



**Eau Claire Outcrop (500 m x 200 m)**



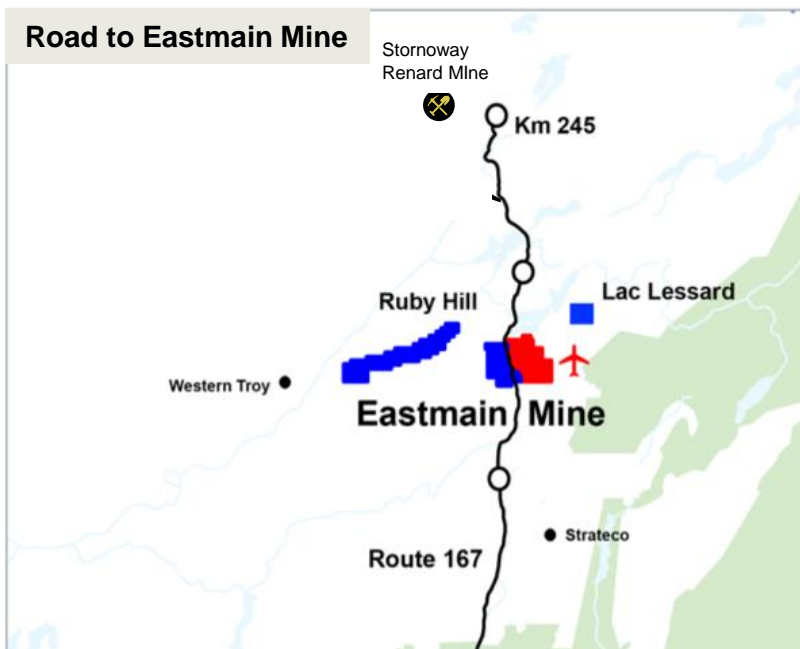
**Quartz-tourmaline main vein**





# EASTMAIN MINE PROJECT REVITALIZATION

## INFRASTRUCTURE AND EXPLORATION UPSIDE



### PROPERTY - 8,014 hectares

Permanent all-weather road, onsite airstrip, generator-power

50 person-camp incl. full-kitchen, core shack and cabins

James Bay gold district greenstone belt (volcanics)

100% ownership

### 50-Man Camp



### HISTORIC MINING & RESOURCE

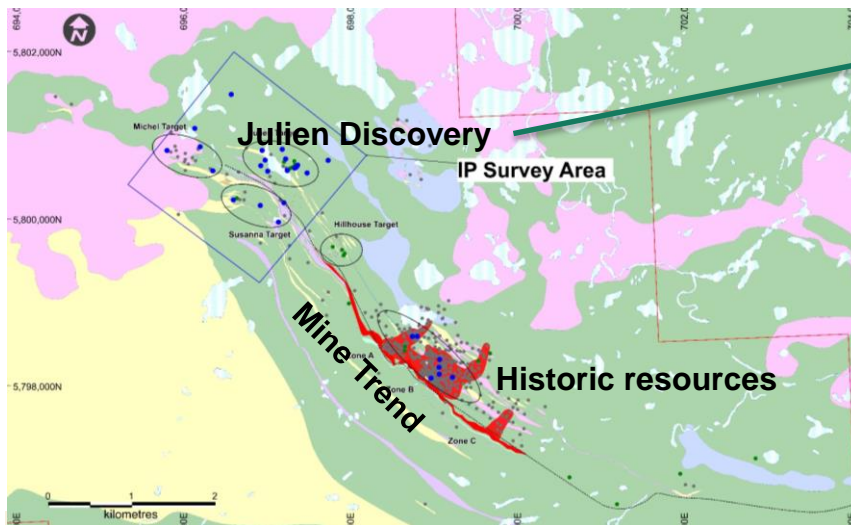
- **MINED:** 40,000 ozs at 10.58 g/t Au (1995)
- **RESOURCE<sup>1</sup>:** 255,750 oz of 10 g/t Au in 878,000 tonnes (A&B and C Zones) (1999 & 2004)
- \$40M invested by previous owners on exploration & development



*Note 1. The Eastmain Mine (past-producing) Historical Resources is not NI 43-101 compliant. A Qualified Person has not done sufficient work to classify them as mineral resources. The issuer is not treating these historical resources as current mineral resources and these resources should not be relied on.*

# EASTMAIN MINE – UNTAPPED POTENTIAL – 8,500 m DRILLING PROGRAM

## FOLLOW UP ON NEW DISCOVERY (2017)



### HIGHLIGHTS

NEW MINERAL RESOURCE

EXPAND JULIEN DISCOVERY

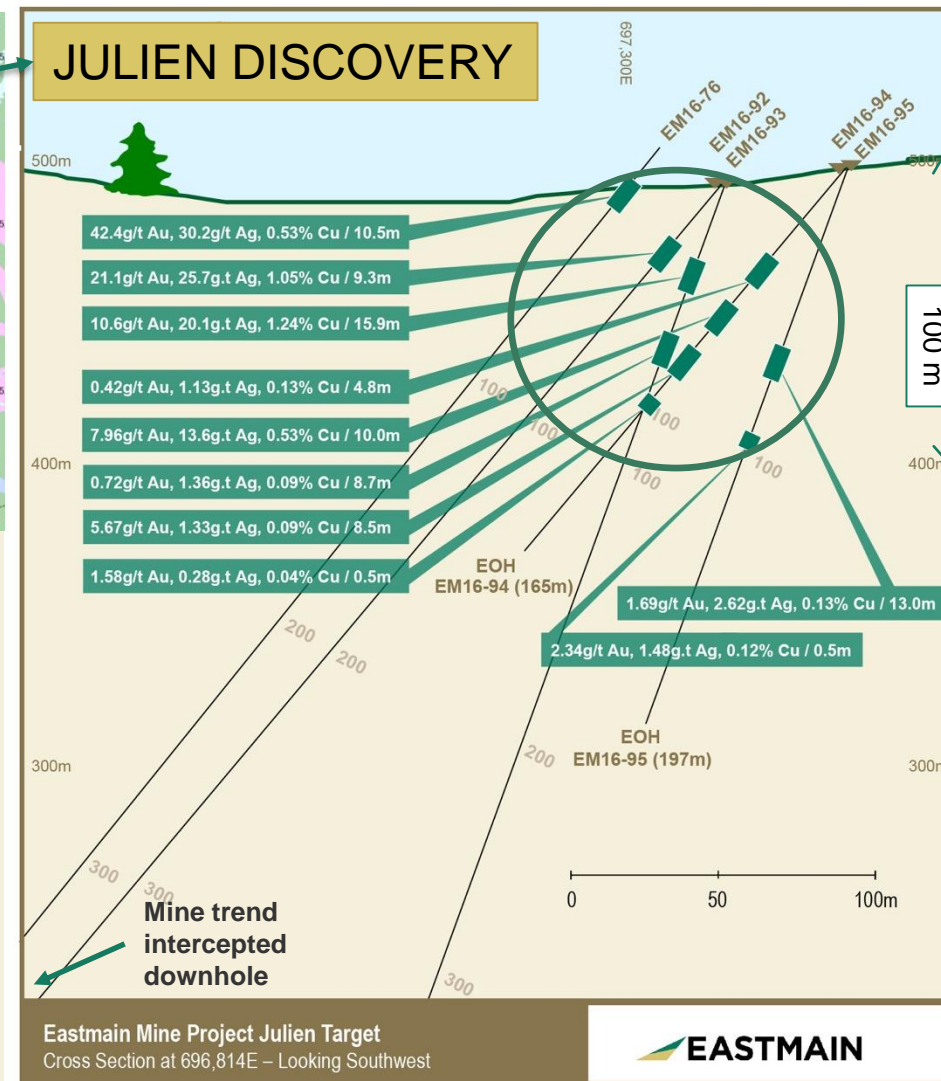
EXPLORE OTHER SIGNIFICANT TARGETS

### UPCOMING CATALYSTS

8,500 m Exploration program (2H 2017)

- New targets, resource area, & follow-up as required

Historic resource NI43-1010 conversion (4Q 2017)





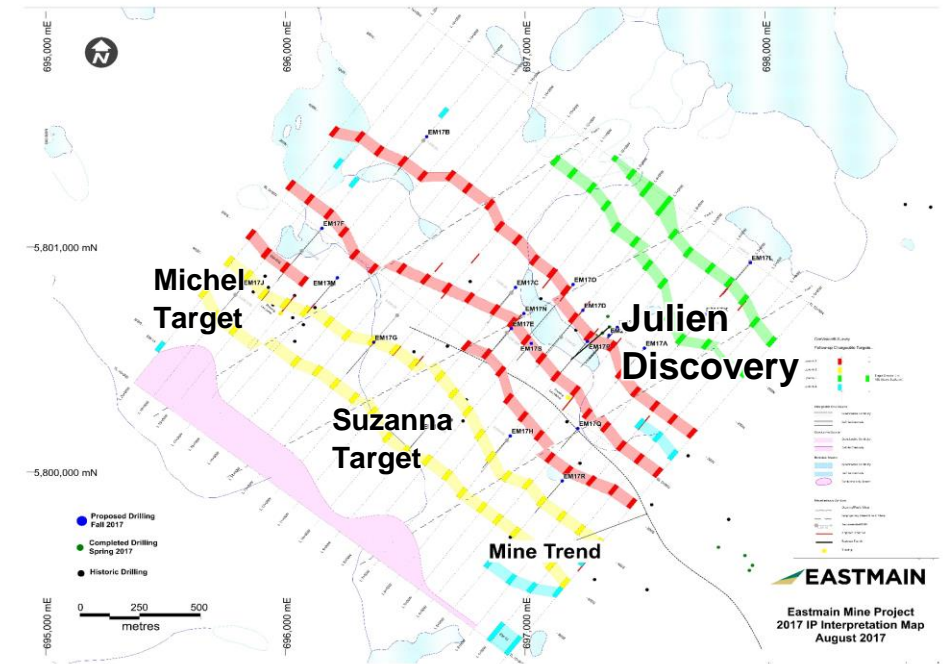
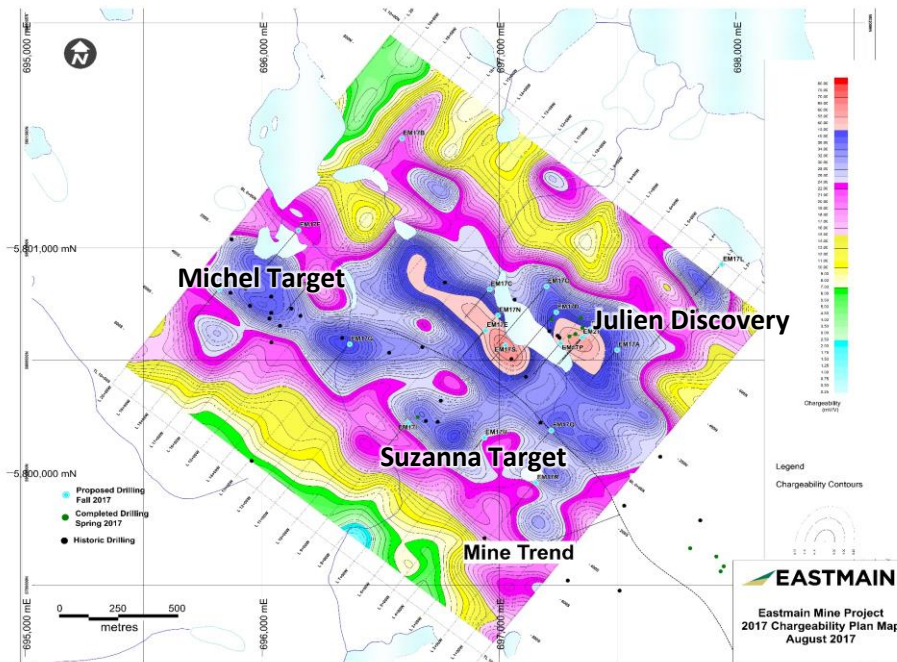
# EASTMAIN MINE PROJECT – IP SURVEY

## SEVERAL HIGH-PRIORITY DRILL TARGETS\*

**17 drill holes (up to 5,500 m) planned as part of the 8,500 m program**

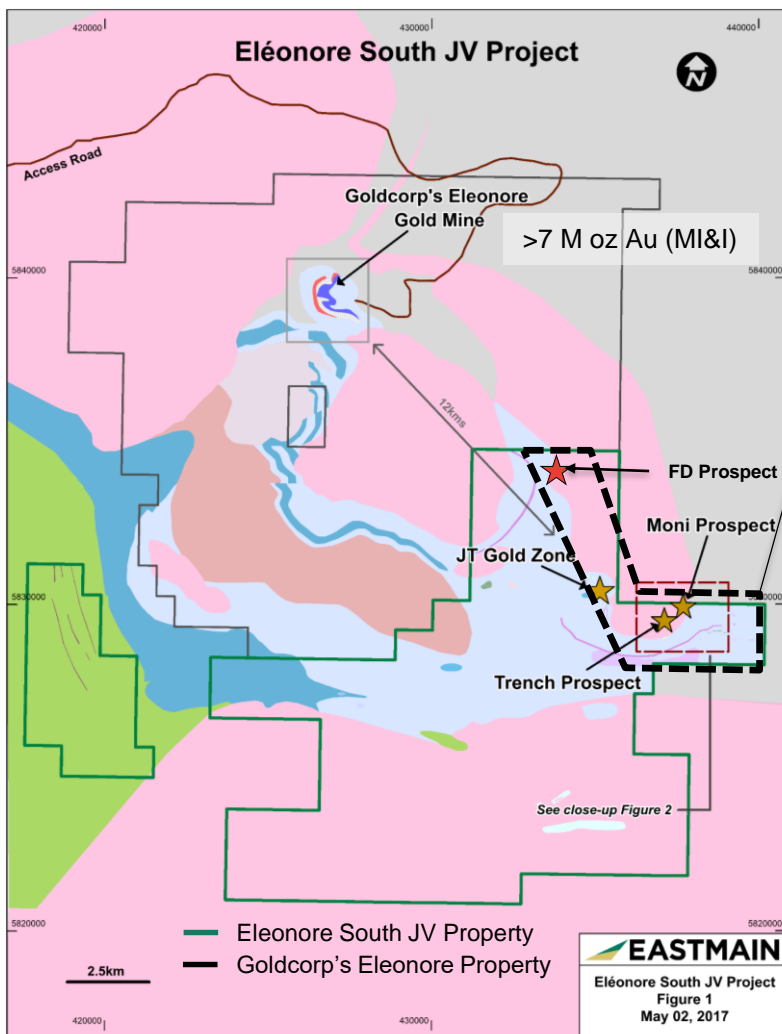
- Julien, Suzanna and Michel Target areas
- Including 1,000 m at 2017's Julien Discovery

- 2-km x 2-km area with 100-m line spacings, with depth penetration of +/- 200-m
- Several of the strong conductive trends are **open at depth and along strike**
- **Seven parallel chargeability** trends following the Mine Trend, and on either side
  - Potential **extension of the Mine Trend NW** (beyond the survey)
  - Potential for **parallel mineralized horizons**



# EXPLORATION NEXT TO WORLD-CLASS GOLD MINE

## ÉLÉONORE SOUTH JV PROPERTY



### EXPLORATION PROGRAM FOCUS

Exploration Budget Increased 90% in 2017/2018

Property size: 147 sq km

#### PROPERTY IS UNDEREXPLORED

#### MAIN PROSPECTIVE CORRIDOR

- 4 km long x 0.5 km wide
- Moni Prospect to JT Prospect along structural contact
- Hydrothermally altered tonalite intrusion near the metasediments contact

#### GOLDCORP'S ELEONORE MINE

- Goldcorp's top mines
- 2017 gold production forecast: 315,000 oz (\$985/oz AISC)
- Sedimentary-hosted gold deposit

#### JOINT VENTURE PARTNERS

- Eastmain (36.7%)
- Goldcorp (36.7%)
- Azimut (26.6% - Operator: 2016 – 1H2018)

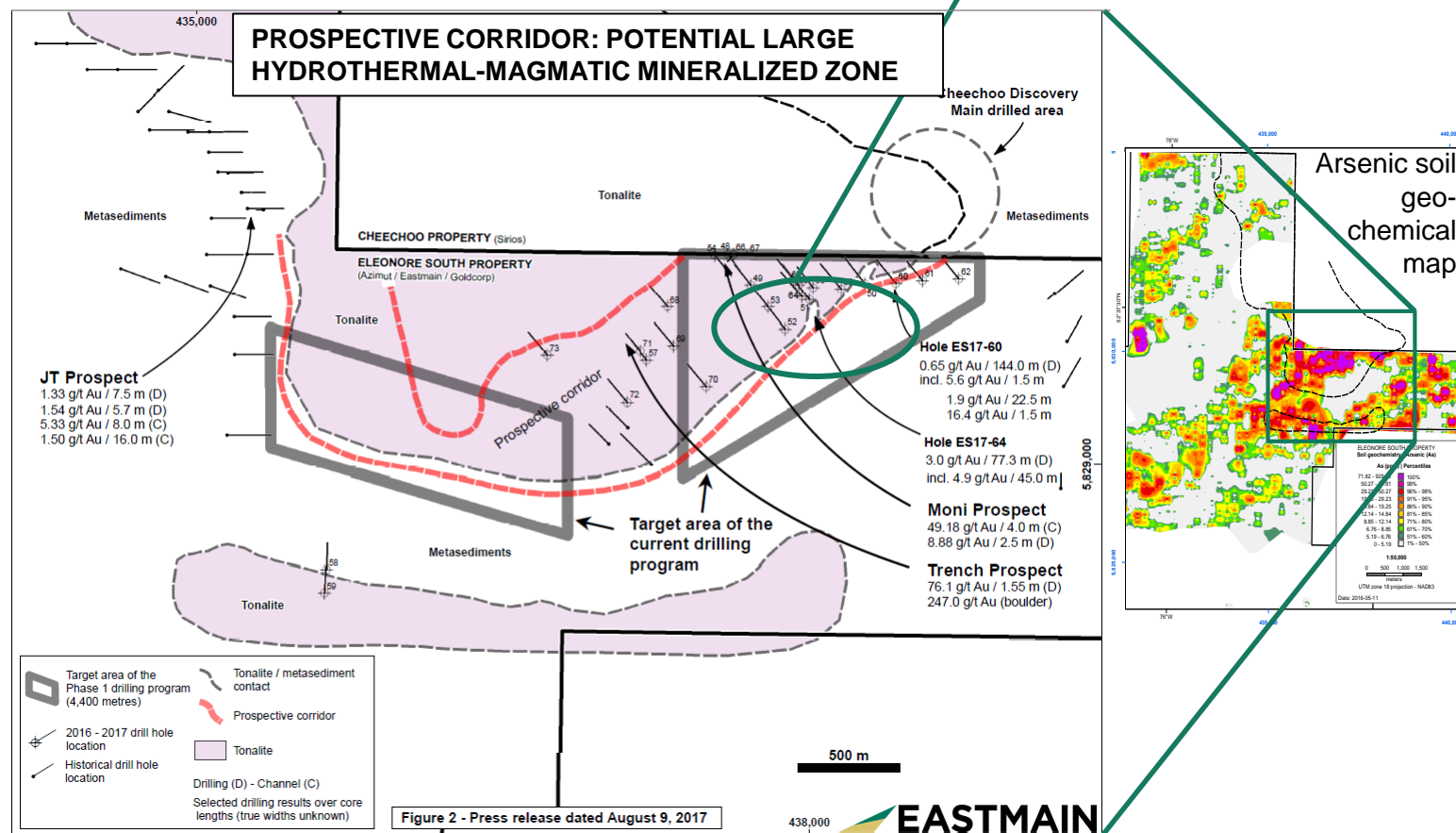
# EXPLORATION WITHIN PROSPECTIVE CORRIDOR

## STRIPPING & 8,000 M DRILLING (TOTAL JV BUDGET \$3.9 M)

### 2017–2018 PROGRAM

- Drilling - 8,000 metres:** Phase 1: 4,400 m (*assays pending*), Phase 2: 3,600 m (*Jan – Mar*)
- High-definition heliborne magnetic survey:** 980 line-km at 25-m line spacing (*complete, results pending*)
- Stripping** - Moni Prospect (*complete – discovery made*)
- Geochemical survey** - property-wide lake-bottom sediments (*complete, reviewing results*)
- Prospecting** - property-wide (*underway*)

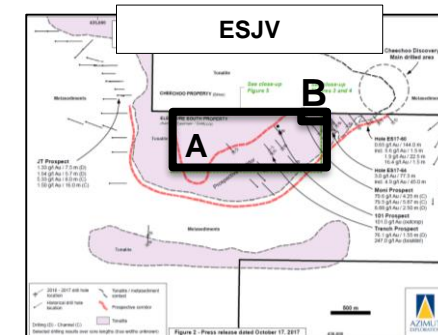
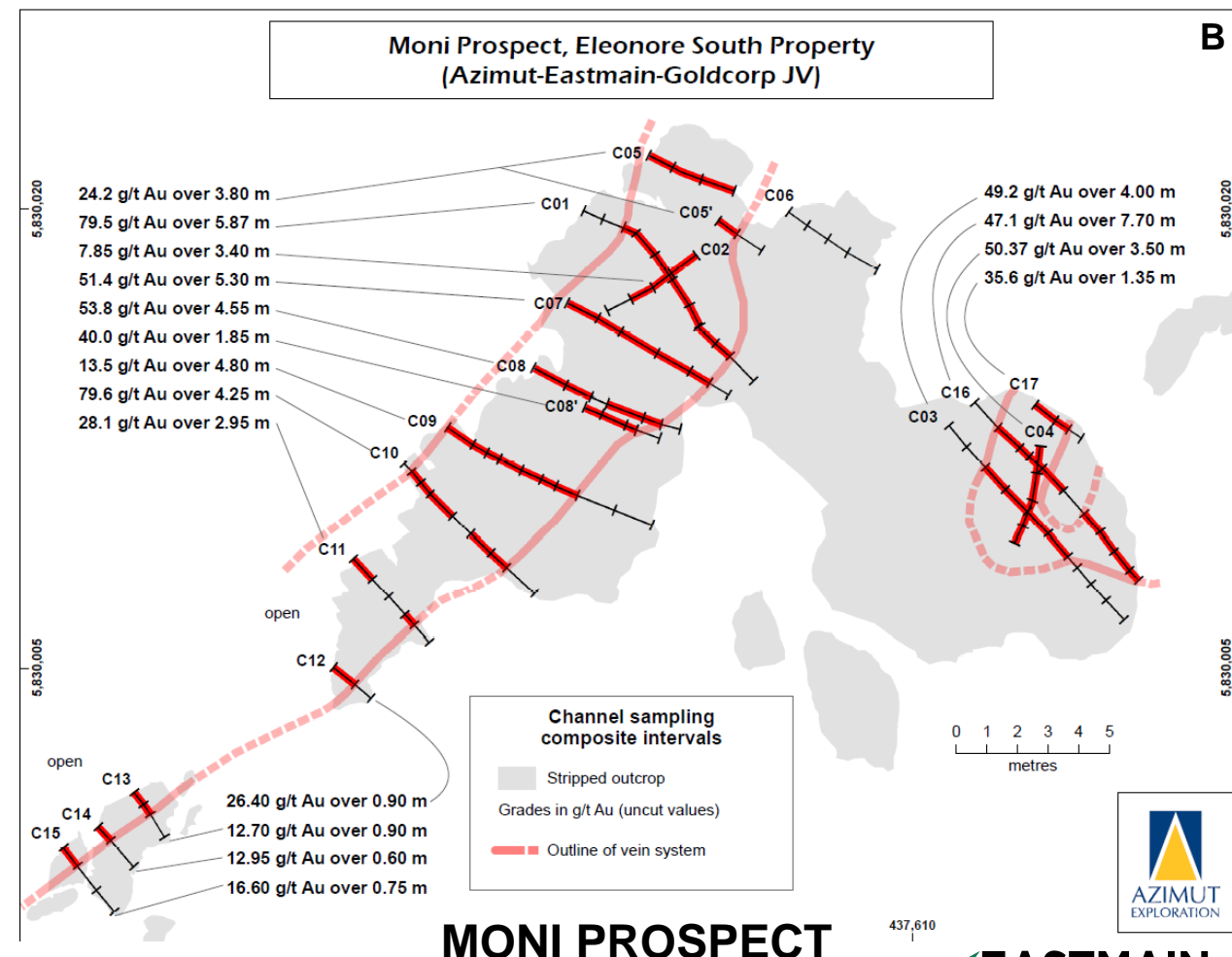
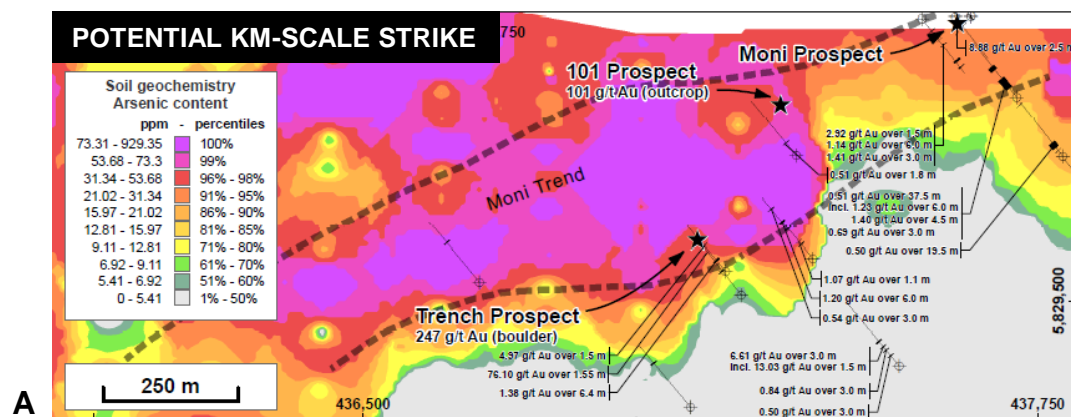
Best results to date, including 4.9 g/t over 45 m



# DISCOVERY: MONI PROSPECT

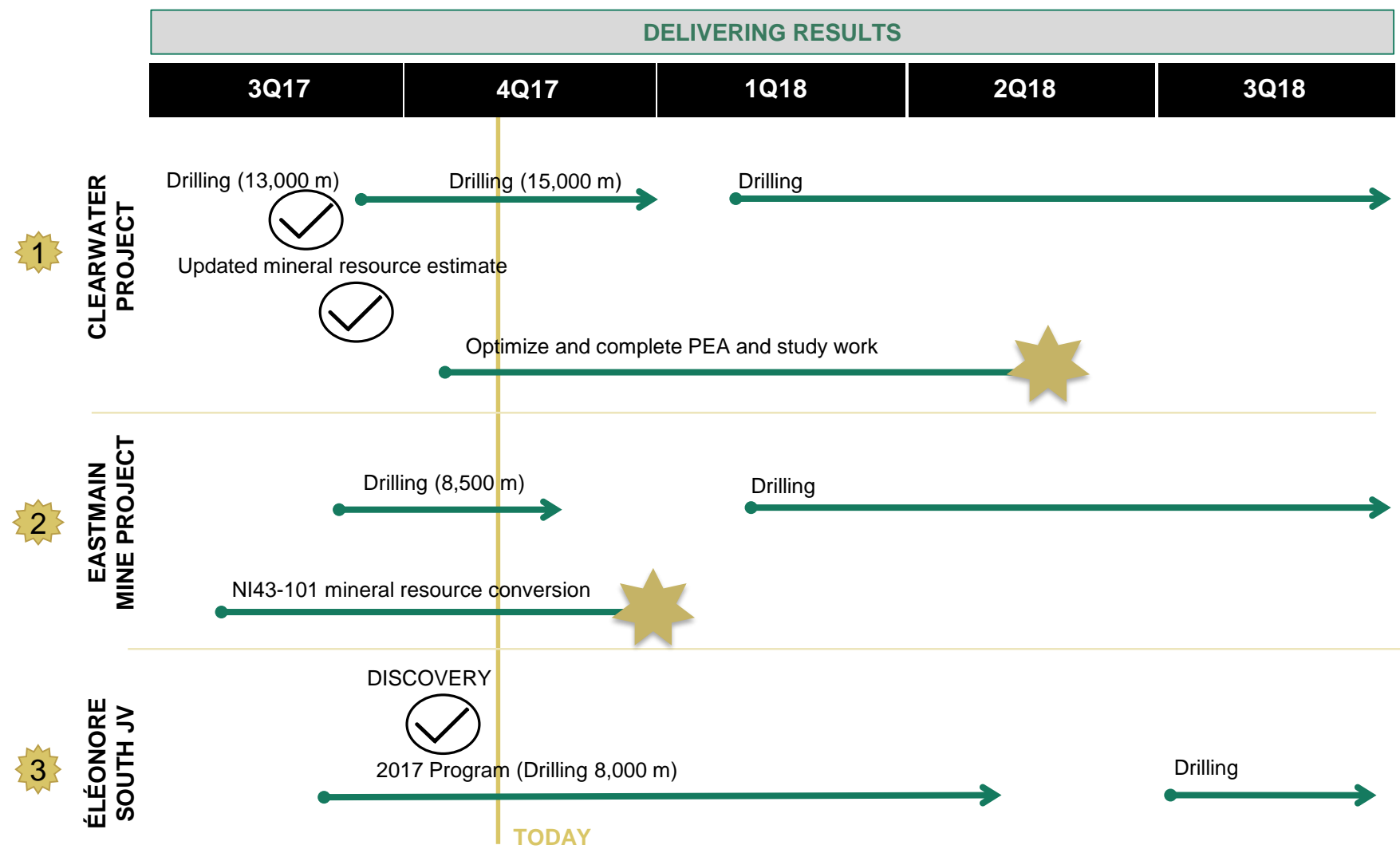
## HIGH-GRADE VEIN SYSTEM EXPOSED BY CHANNEL SAMPLING

- A 6 m wide vein system was exposed along a 36 m NE-SW strike length; quartz-feldspar, intrusion-hosted high-grade gold-bearing vein system
- A second vein is located about 15 m SE
- A potential kilometre-scale strike extension to the SW of this high-grade vein system, supported by:
  - Newly discovered 101 Prospect returned up to 101.0 g/t Au from grab samples 400 m SW of the Moni Prospect;
  - A 1,100 m long SW trending gold-arsenic soil anomaly on strike with the Moni and the 101 prospects (A, below)
  - An interpreted correlation to a NE-SW trending magnetic low



# GROWTH FOCUSED

## UPCOMING CATALYSTS AND PROGRAMS (calendar year)







## FOR MORE INFORMATION

**Claude Lemasson** P.Eng., MBA

President & CEO

lemasson@eastmain.com

**Joe Fazzini** CPA, CA, CFA

CFO & VP Corporate Development

fazzini@eastmain.com

Office: 647-347-3735

[www.eastmain.com](http://www.eastmain.com)

TSX:ER

OTCQX:EANRF



# APPENDIX



# BOARD AND MANAGEMENT

## STRENGTH IN ENGINEERING, GEOLOGY & CAPITAL MARKETS

---

### WELL-ESTABLISHED BOARD OF DIRECTORS

**Laurence (Laurie) Curtis**  
*Chairman*

**Blair Schultz**  
*Capital markets experience*

**Michael Hoffman**  
*Mine Engineer & Executive*

**Hervé Thiboutot, Geological Engineer**  
*Integra Senior VP (Quebec)*

**Claude Lemasson**  
*President & CEO and Director*

---

### MANAGEMENT TEAM

**Claude Lemasson, P.Eng, MBA**  
*President & CEO*

- Highly-skilled mining professional
- 30 yrs of mine dev't & operational experience
- Direct experience with Goldcorp's Éléonore project in northern Québec

**Bill McGuinty, P.Geo**  
*VP Exploration*

- 30 yrs experience in Canada and Latin America, from exploration to environmental and feasibility studies

**Joe Fazzini, CPA, CFA, CA**  
*CFO & VP Corporate Development*

- 10+ yrs advising and auditing global gold and base metal producers through PwC & Dundee Capital Markets.

**Manuel Ng-Lai, P.Eng**  
*Project Engineer*

- 10+ yrs in the technical services sector

**Alison Dwoskin, CPIR**  
*Manager, Investor Relations*

- 10+ yrs in mining Investor Relations

**Carl Corriveau, P.Geo**  
*Exploration Manager*

- 15+ yrs industry experience, including project management and evaluation, advancing projects from exploration through economic studies

# CENTRAL JAMES BAY GOLD CAMP

## CANADA'S EMERGING GOLD DISTRICT



### Production

The Canadian Shield has produced over 200 million ounces of gold



### Exploration

Potential for many more discoveries as exploration advances



### Development

Improved infrastructure to speed up pace of exploration



### Life Cycle

James Bay is one of the youngest camps in the Canadian shield

District	First Gold Pour (Year)	Production & Reserves (Millions of Ounces)
Central James Bay	2014	7
Rice Lake	2005	2
Casa Berardi	1988	3
Detour	1983	23
Hemlo	1981	21
Chibougamau	1952	7
Red Lake	1930	28
Rouyn-Noranda	1927	20
Val D'or	1923	30
Kirkland Lake	1915	45
Timmins	1909	74



1. The production and reserve figure for James Bay Central Camp includes Eastmain's resources as there are currently no reserves. 2. The Eastmain mine extracted 40,000 ounces in 1995. 3. Casa Berardi and Chibougamau are located in Southern James Bay Source: Company reports, government studies, and academic journals. Compiled in 2016.



# CLEARWATER - EAU CLAIRE GEOLOGY

## SUMMARY

Two distinct gold bearing vein systems: Quartz-Tourmaline (QT) and High-Grade Schist (HGS) veins, hosted in basalts.

The Company's recently completed infill program (+52,000 m) provided an improved understanding regarding the structurally-controlled QT and HGS veins. The veins exist within the quartz-feldspar porphyry hanging-wall and volcanoclastic foot-wall, and represent key controls for gold enrichment zones. The controlling hanging-wall and foot-wall continue to depth, and will guide future expansion drilling programs.

At the 450W Zone, improved definition of QT veins in certain parts of the deposit form an en-echelon grouping overall, with locally denser vein clusters. Both the overall QT vein array and the clusters appear to 'climb downward' steeply to the east, creating an interpreted steep SE plunge to the vein system. This orientation will be used to guide deep drilling of the deposit while the spacing of the interpreted QT vein clusters will also be tested. HGS vein dimensions were also better defined by the infill program. Potential exists to intersect these structures down-plunge to the east below the deposit, as expansion of the resource envelope.

Drilling confirmed the current geologic understanding of the **QT Veins**. Infill drilling has identified new vein clusters in certain areas of the deposit. Similar to the multiple vein cluster seen in surface exposure at the 450W outcrop, a second cluster set was discovered approximately 400 m southeast, at a 380 m vertical depth at the lower extent of infill drilling. A similar cluster is also seen at a depth of approximately 175 m to 200 m depth roughly midway between these two clusters. Within the clusters, which can extend up to 100 m in strike, the QT veins can thicken to 2-3 m in width. Additional analysis will be conducted on how these clusters of denser and higher-grade veins are distributed within the deposit and how they would relate to future development.

Infill drilling improved definition of the **HGS veins**, which can report high gold grades and are interpreted to cross cut the 450W suite of QT Veins. Currently, four veins in the 450W area are classified as HGS veins, with two, HGS-02 and HGS-04, being traced over substantial distances across the deposit. HGS veins are of variable width, ranging up to 13 m, and averaging 3 m in width. In addition to the quartz-tourmaline mineralization common to all gold bearing zones in the Eau Claire deposit, the HGS veins are strongly sheared/foliated and are composed of variable amounts of typical host rock alteration minerals including actinolite, biotite, carbonate and silica. Despite being limited in number, HGS Veins are observed to be, on average, thicker than the QT veins while hosting similar grade gold mineralization.

The HGS-02 vein has an identified strike extent of approximately 350 m and 330 m of dip extent. The HGS-04 vein has a strike extent of 650 m and dip extent of 300 m. Both HGS-02 and HGS-04 remain open along strike and down-dip. Additional work is currently underway to test and extend the known limits of the HGS Veins.



# EASTMAIN MINE PROJECT GEOLOGY

## SUMMARY

The gold, silver, copper project is underlain by the Upper Eastmain River Greenstone Belt, which extends for 100 km in a north-northeast direction in vicinity of the property. The belt consists of one or more cycles of mafic to felsic metavolcanic and metasedimentary rocks surrounded by granite and granite gneiss, with ultramafic volcanic rocks (komatiite flows) being traced across the belt. The project uses a VMS model, and is hosted in basalts.

Gold mineralization is mainly contained in siliceous stratabound units containing 10 to 30% pyrrhotite, pyrite and minor amounts of chalcopyrite.

The Eastmain Mine historic resource (A,B & C) is spatially associated within a major structural deformation corridor, coinciding with strongly altered ultramafic volcanic rocks (komatiitic flows) intercalated with narrow lenses of felsic volcanic rocks within a thicker sequence of mafic volcanic flows

4 high-grade target zones northwest of the Eastmain Gold deposit were identified by rock samples, geophysics and drilling, in search of additional resources along the Mine Trend.

- Hillhouse Target occurs 850 m northwest of the A and B Zones and consists of a 400 m long by 150 m wide area, containing anomalous rock samples with gold ranging from 0.5 to 39.5 g/t Au; silver ranging from 0.5 to 25.8 g/t Ag; and copper ranging from 0.1 to 2.4% Cu.
- Julien Target is situated 1.7 km northwest of the A and B Zones. This target coincides with a magnetic high in Mine Trend rocks extending for a length of 500 m. The Julien target has been defined by anomalous rock samples containing from trace to 27.2 g/t Au; trace to 28.8 g/t Ag; and from trace to 2.3% Cu.
- Suzanna Target is situated 600 m west of and parallel to the Julien anomaly. This target extends for a length of 375 m with anomalous rock assays ranging from 0.5 to 38.7 g/t Au, 0.5 to 26.6 g/t Ag and 0.1 to 3.06% Cu.
- Michel Target is located 400 m north of the Suzanna anomaly and is defined by two clusters of anomalous rock samples ranging from 0.5 to 125.1 g/t Au; 0.5 to 12.5 g/t Ag; and 0.1 to 1.08% Cu.



# ÉLÉONORE SOUTH JV GEOLOGY

## SUMMARY

The Eléonore South's prospective corridor (from Moni to JT Prospects) is interpreted as a late-stage hydrothermal-magmatic mineralized system emplaced along the margins of the tonalite intrusion, close to, or at the contact with surrounding metasediments.

These indicators of the hydro-thermal magmatic system include the presence of hydrothermal breccia, sheeted veins, extensive pervasive alteration, no specific deformation zone related to alteration/mineralization, etc.

Further west, at the JT Prospect, this corridor may extend another 4 km north along the tonalite/metasediment contact to the FD Prospect, potentially doubling its length on the Property. Gold mineralization hosted in metasediments have been located, but remain under-explored and will be subject to systematic field assessment, which may lead to new drilling targets.

Main target types on the Property include:

- Shallow-depth/sub-cropping kilometre-scale large stockwork zones, or disseminated mineralization, hosted in a tonalite intrusion; and
- Gold-bearing high-grade pegmatite dykes, or pegmatite dyke swarms, hosted in the tonalite intrusion.



# CLARKIE PROPERTY GEOLOGY

## SUMMARY

Clarkie abuts the Clearwater Project to the east. Together, Clearwater and Clarkie cover 51,614 ha of prospective greenstone belt in the Eastmain/Opinaca district of James Bay, Quebec. The project shows 3 distinct geological domains which may host analogues to the Eleonore Gold Mine (Northern Sedimentary Basin), the Eléonore South JV (Central Intrusive Complex) and the Clearwater Deformation Zone.

The Northern Sedimentary Basin comprises two-thirds of the northern Clarkie claims. The basin is underlain by Clarkie Formation epiclastic rocks; greywacke, siltstone, polymictic conglomerate and iron formation. The Eleonore Gold Mine is hosted in greywacke within a similar basin approximately 60 km to the northwest. Conglomerates analogous to the Kirkland Lake gold camp conglomerates are also present and are indicative of regional structural/stratigraphic breaks which are prospective for gold mineralization.

The Clearwater Deformation Zone is the interpreted eastern extension from the Eau Claire deposit, trending for 40 km across the southern portion of both the Clarkie Property and the Clearwater Project. The presence of a mafic volcanic sequence within the deformation zone offers a potential analogue to the structurally controlled Eau Claire gold deposit.

The Central Intrusive Complex is composed of a tonalite intrusive with additional diorite-granodiorite phases centrally located within the Northern Sedimentary Basin. Gold mineralization within and on the margins of a tonalite intrusive have been the focus of 2016-2017 exploration at the Eleonore South Joint Venture property located 35 km to the northwest. Both the core of the circular-shaped intrusion at Clarkie and its contacts with sediments are considered highly prospective.