

The Future is Under Cover

 Nevada Exploration Inc

TSX.V: NGE OTCQX: NVDEF



presentation contains certain "forward-looking statements" including, without limitation, expectations, beliefs, plans and objectives regarding the timing and nature of estimated future exploration, success of exploration activities, and potential transactions discussed. Among the important factors that could cause actual results to differ materially from those indicated by forward-looking statements are the risks inherent in mineral exploration, the need to obtain additional financing, environmental permits, the availability of needed personnel and equipment for exploration and development, fluctuations in the price of minerals, and general economic conditions.

A. Hodges, CEO of Nevada Exploration Inc., is the Qualified Person, as defined in National Instrument 43-101, and has prepared the technical and scientific information contained in this Presentation.

o we are



ven technical team

olved in discovery of +37Moz Au in Nevada

used on under cover exploration in Nevada

w technology to open up search space

ressively advancing district-scale projects

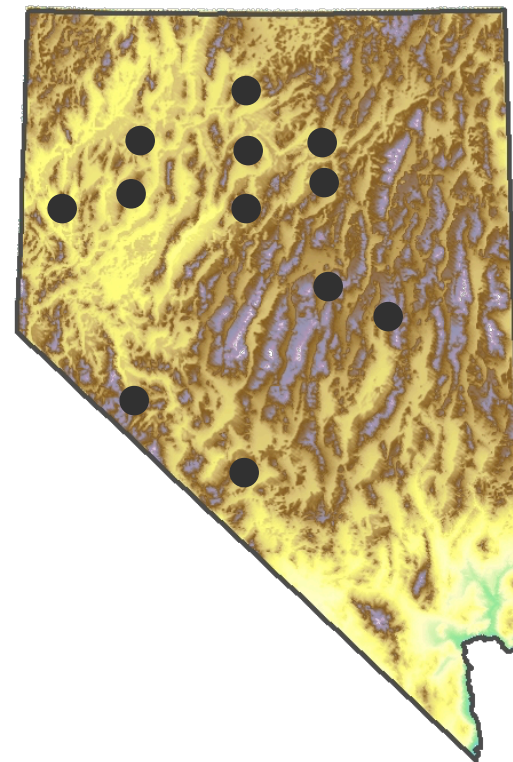
junior for new claims in Nevada in 2016

4 after Kinross, Newmont, and Barrick)

re capitalization

arket Cap: \$21M

ider Ownership: 18M (34%)



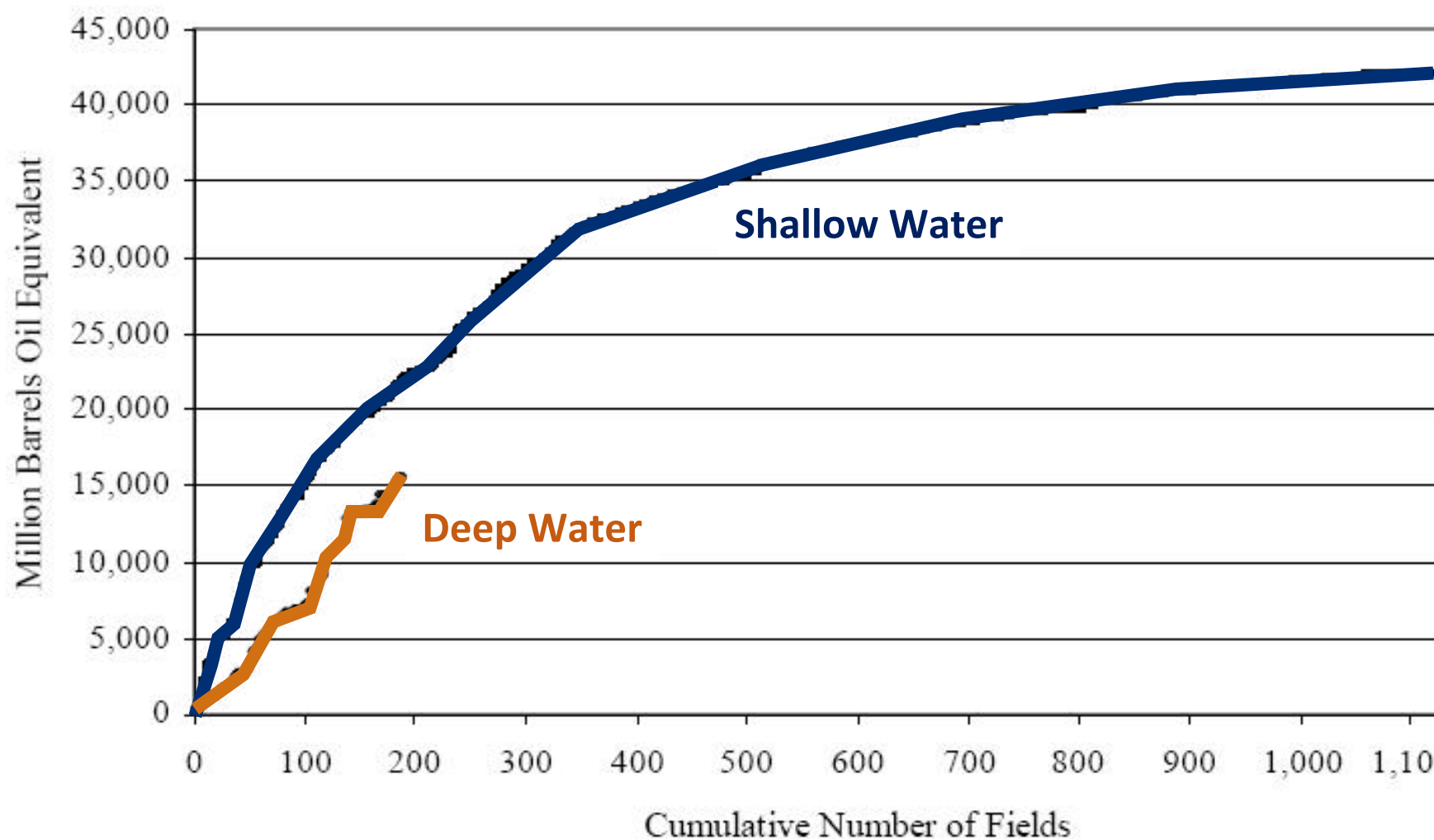
Rosebud
Twin Creeks
Mule Canyon
Elder Creek
Lone Tree
Goldbar
Easy Junior
Cove McCoy
Wildcat
Mtn. View
Goldfield
New Aurora

+37 Moz of Gold in Nevada

Exploration Creaming Curve

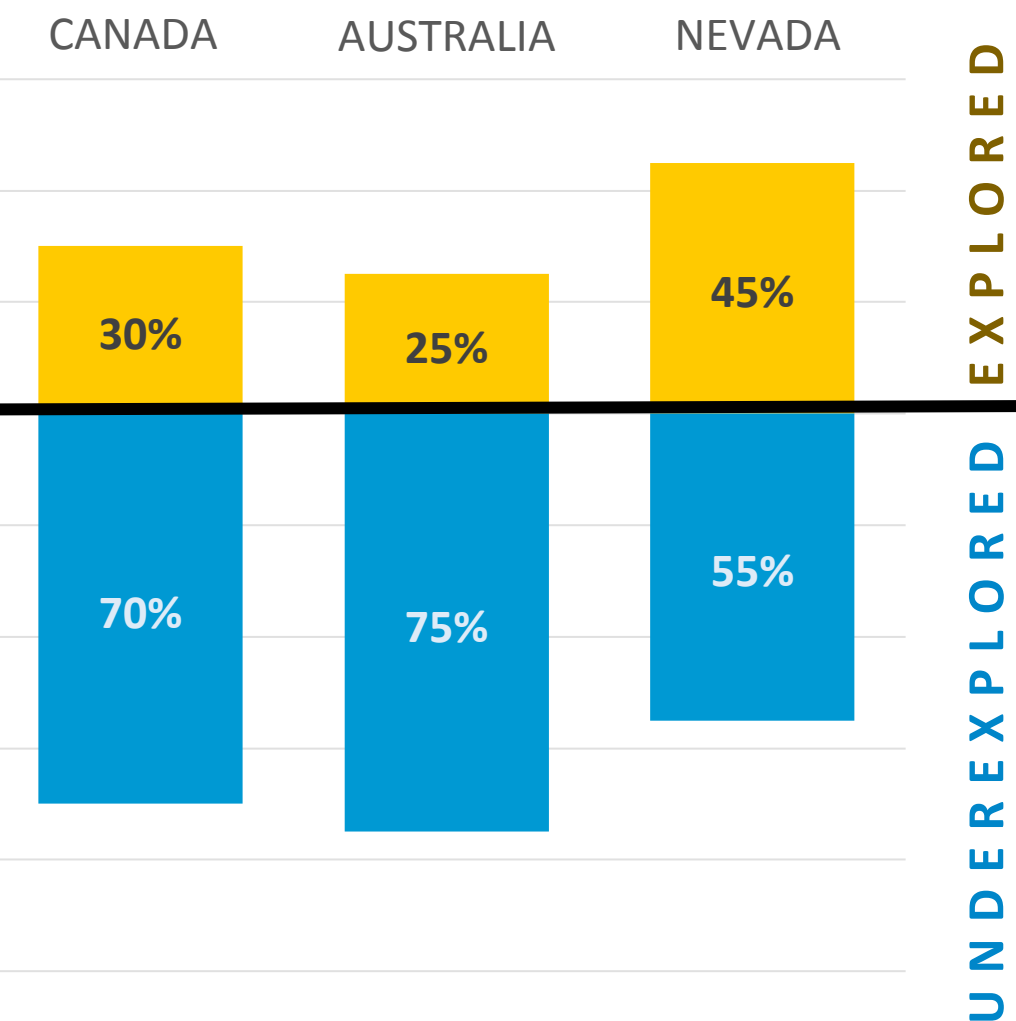


EXAMPLE:
Hydrocarbons in
offshore of Mexico



SOURCE: U.S. Department of the Interior, Minerals Management Service

Uncovered areas present new search spaces



Opportunity in Nevada: 200Moz Au



World's #1 Au producer by area

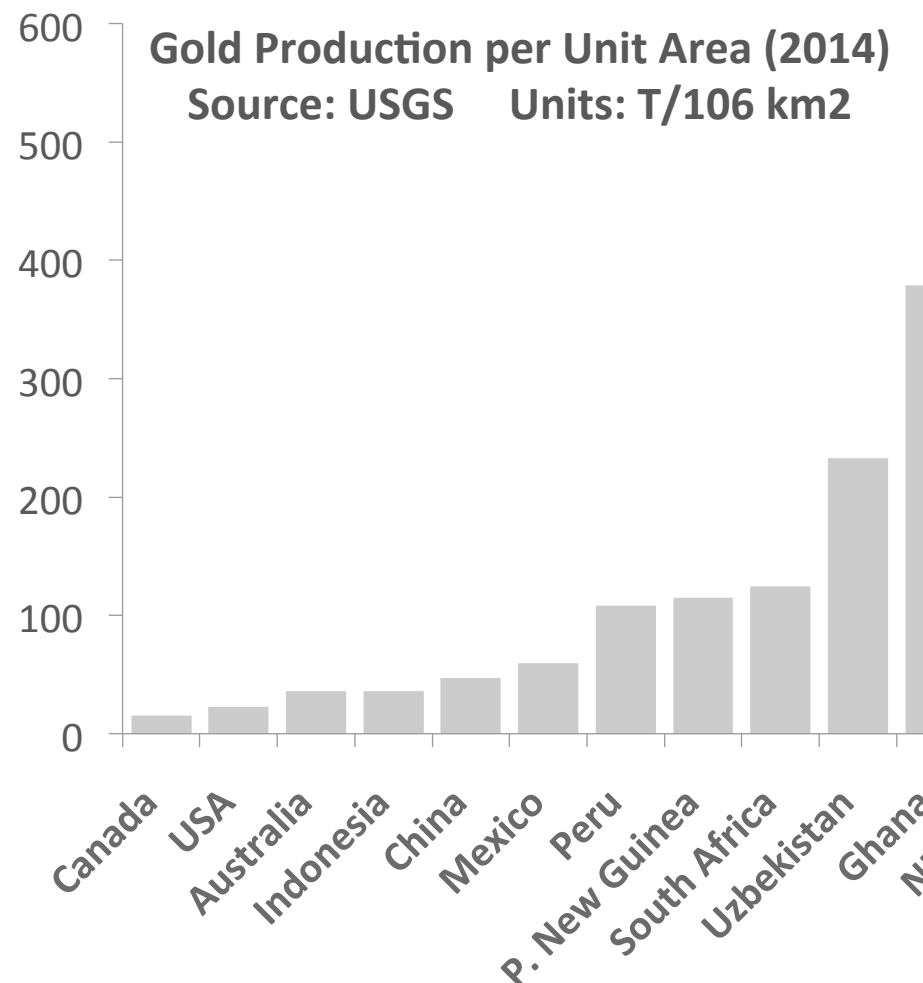
1/3 of Nevada's bedrock is covered

100Moz produced near exposed ranges

potentially another 200Moz under cover

"There is no reason not to assume as much gold still exists as has been mined in the past, and that prospectors, explorationists, and geologists have not found the easy gold."

Richard Goldfarb, Ph.D. USGS



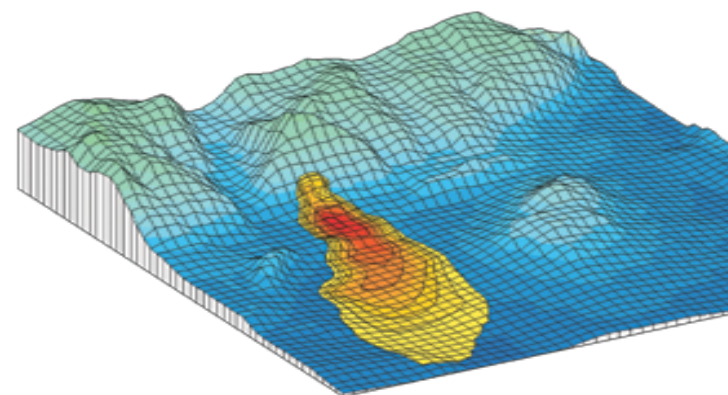
Unlocking covered areas



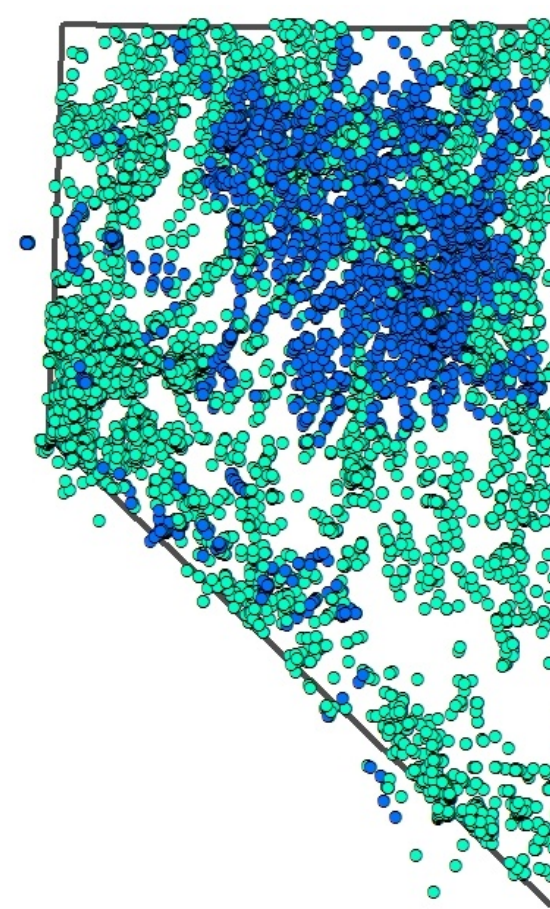
Underwater chemistry sees through cover
Deposits create measurable footprints
Confirms presence of minerals
Larges targets requiring fewer samples to find

Significant industry buy-in

Australian (CSIRO) and Nevada (USGS) researchers
are used to delineate major covered deposits
Barrick, Newmont, AngloGold Ashanti, BHP-Billiton,
and Tinto collaborating in Australia
and Quantum in Africa and Chile



Changing groundwater chemistry to NV



has completed world's largest groundwater program for gold
100 new groundwater samples and 50,000 historic analyses

is opening up Nevada's basins to systematic exploration
The changing, unprecedented costs of US\$1,000/km²

has built unrivaled portfolio of new exploration targets
Active projects totaling 110 km²

Tract-scale acquisition targets ready for staking

Advancing covered targets



Industry is embracing low-cost drilling

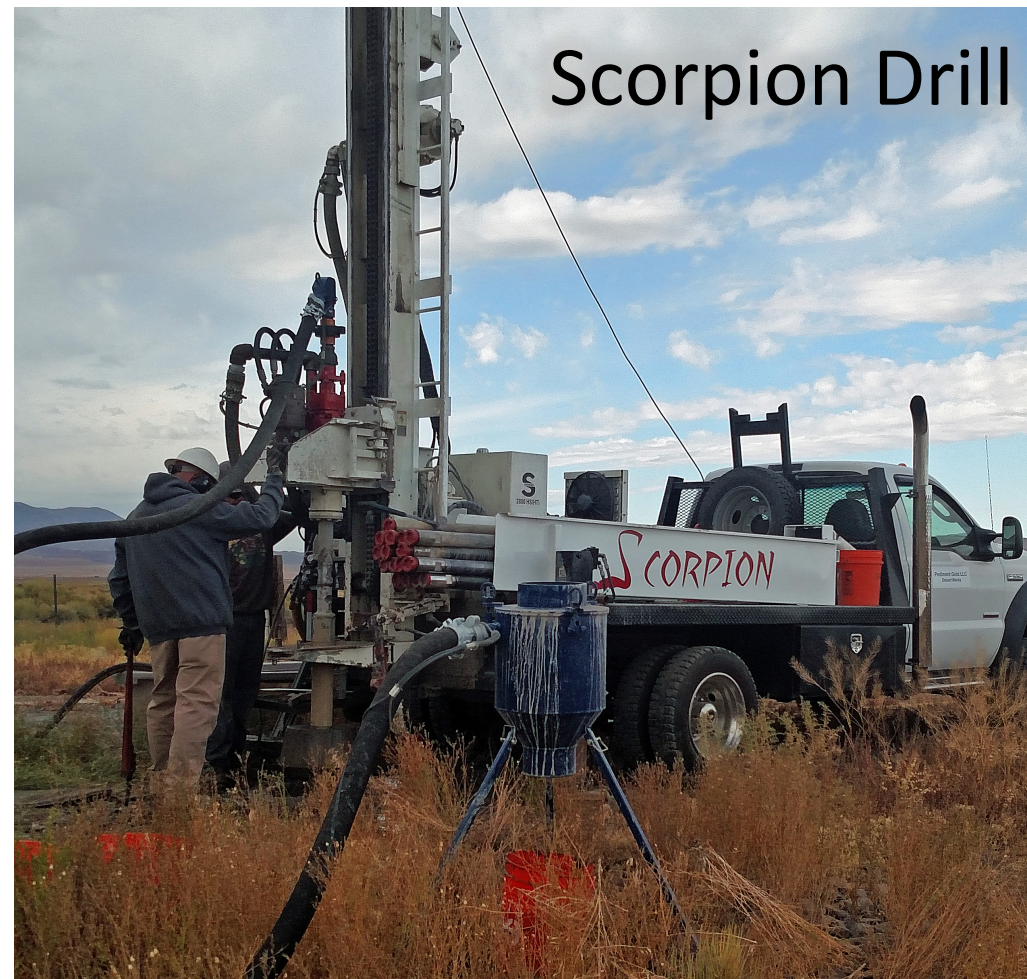
As conventional drilling costs have increased, we have included its use as an early-stage prospecting tool.

New low-cost drilling platforms are unlocking the power of drilling (e.g. RAB drilling)

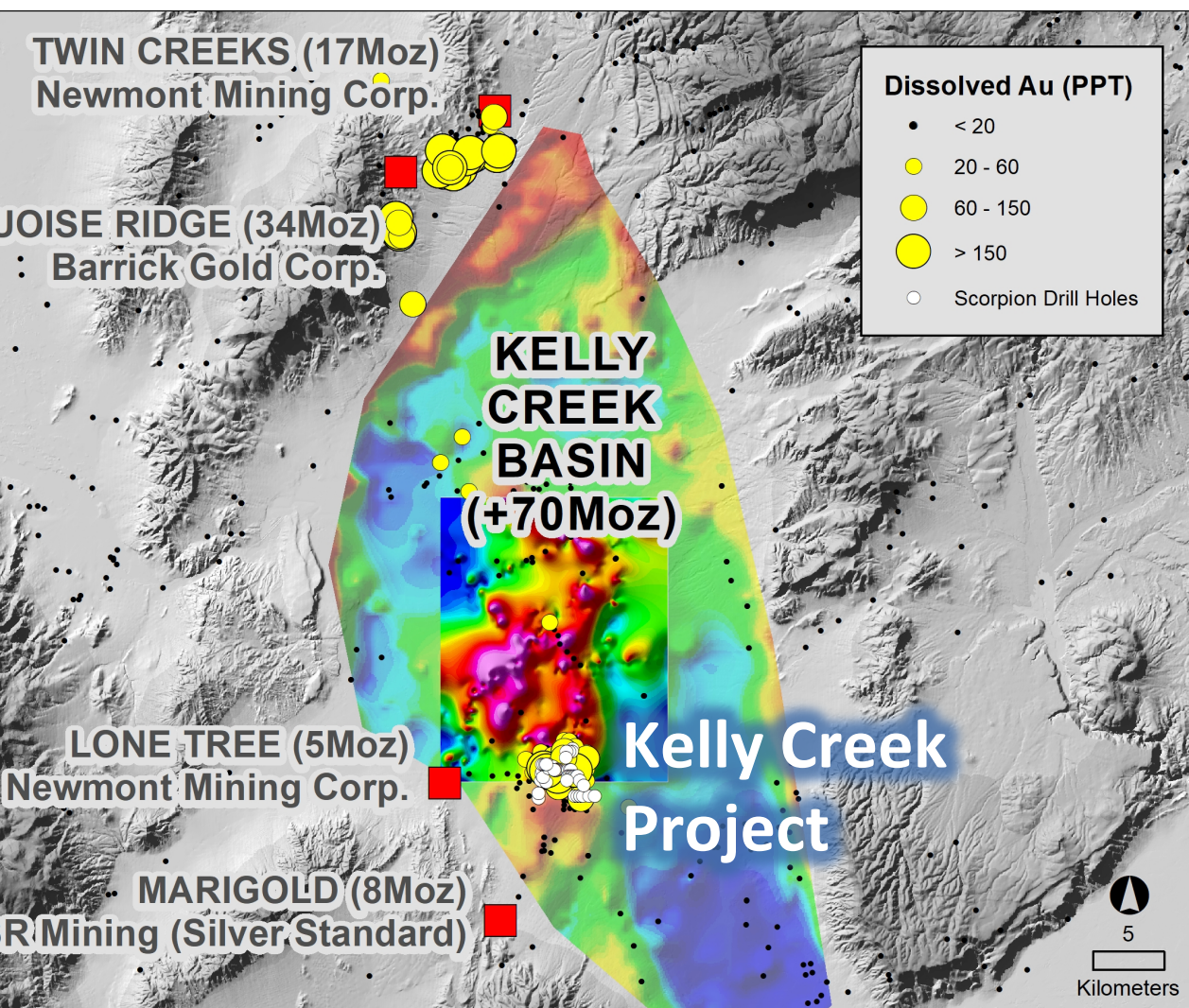
Our Scorpion drill rig is made for Nevada. It can sample water, bedrock, and cover.

We worked with industry experts to build custom equipment for Nevada conditions.

It handles deeper cover to sample to 150m for \$100/m vs. \$300/m for conventional RC.



Opening up a new search space



Kelly Creek Basin

Total Contained Au: ~70Moz

>1,000km² covered search space

NGE's Kelly Creek program

Regional Geology

Geophysics (gravity, seismic, C

Groundwater chemistry

NGE land holdings

42 km²

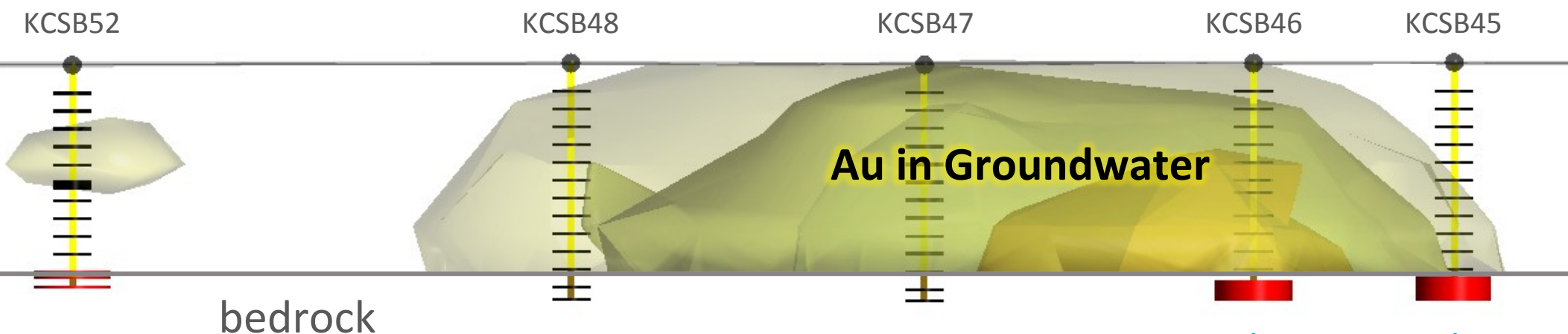
Scorpion Drill Program

53 holes, 4,560 m

Ly Creek Scorpion drill results



Section across central portion of property
Whole groundwater sample interval ~10 metres

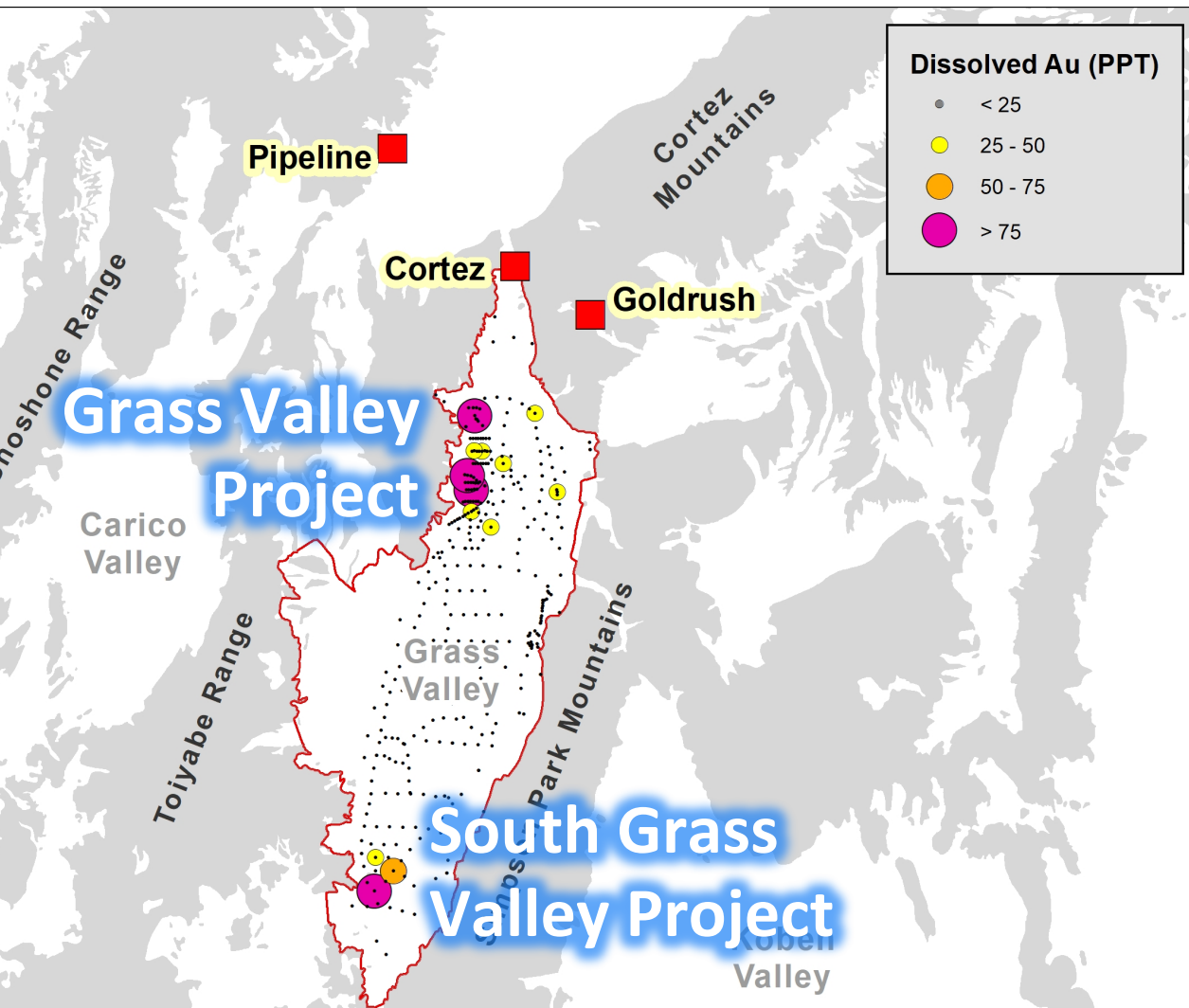


RESULTS:
Drilling into mineralized units
consistent with the nearest deposit
analogues at Lone Tree and Marigold

Terminated at 0.1g/t Au in bedrock

KCBS46
KCBS45
11m avg. 0.1g/t Au in bedrock

e search for the next Cortez



Cortez/Pipeline/Goldrush Complex
Annual Au Production: >1Moz
Total Contained Au: ~40Moz

NGE's Exploration Program

Regional Geology

Geophysics (gravity, seismic, C

Grass Valley

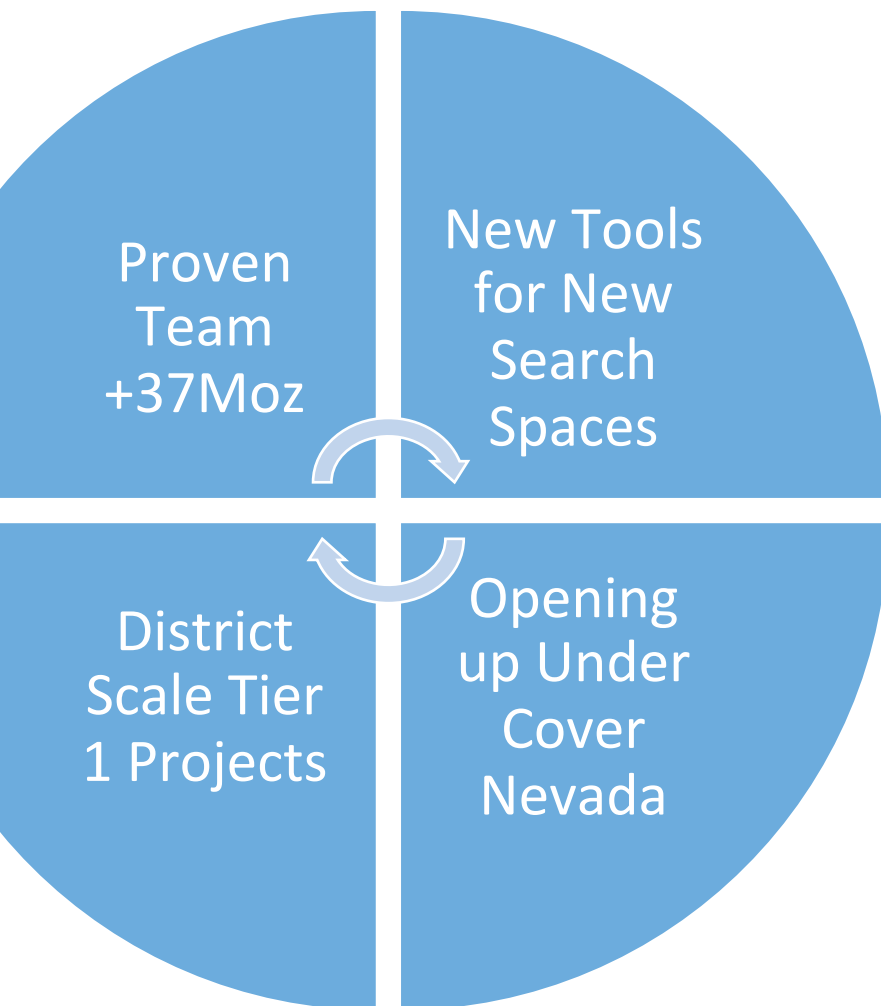
>500km² covered search space

Groundwater chemistry program

NGE land holdings

57 km²

covery matrix



Coming Months

Receive final Scorpion results from Kelly Creek

Prepare for conventional drilling at Kelly Creek

Drilling at South Grass Valley (Fall 2017)

Drilling at Grass Valley (Spring 2018)

Management

Wade Hodges, MSc, P.Geo
CEO & Director

James Buskard, MBA
President

Kenneth Tullar, P.Geo
COO

Cyrus Driver, CA
CFO

Directors

Dennis Higgs, B.Comm
Chairman & Director

John Larson, PhD
Director

Ben Leboe, CA, CPA
Director

Wade Hodges, MSc, P.Geo
Director