



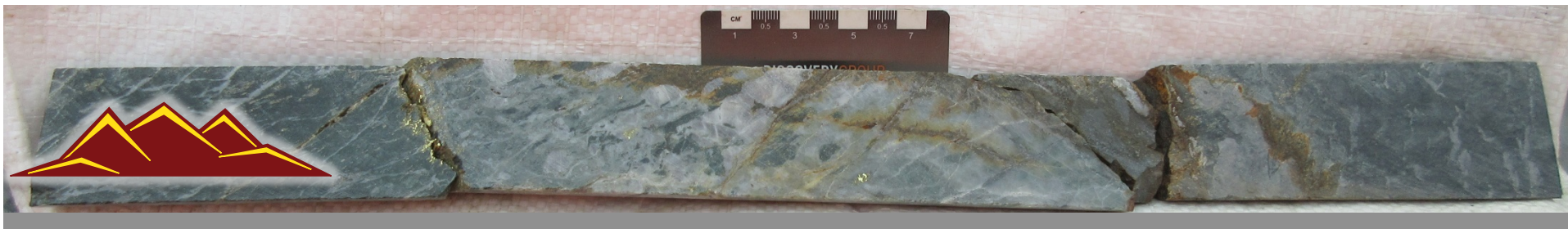
COLORADO RESOURCES LTD.

TSX-V: CXO



2017 Progress

Beaver Creek Presentation



CAUTIONARY STATEMENT

Readers should not rely on information in this summary for any purpose other than for gaining general knowledge of Colorado Resources Ltd. ("Colorado"). This summary may include forward-looking statements as well as historical information. Forward-looking statements include, but are not limited to, the advancement of mineral exploration, development and operating programs. The words "potential," "anticipate," "forecast," "believe," "estimate," "expect," "may," "project," "plan" and similar expressions are intended to be among the statements that identify forward-looking statements. Although Colorado believes that its expectations as reflected in any forward-looking statements, are reasonable, such statements involve risks and uncertainties and no assurance can be given that actual results will be consistent with these forward-looking statements. For further information on the nature of such risks and uncertainties, refer to Colorado's Management Discussion and Analysis, a copy of which may be obtained from Colorado's website at www.coloradoresources.com or on the SEDAR website at www.sedar.com. The information contained in this summary was current at the date of publication. Colorado does not warrant or make any representations as to the ongoing accuracy of this information, the validity or completeness of any facts or information contained in this summary. Colorado may revise this information in subsequent publications but does not assume the obligation to update any information. Colorado shall not be liable or responsible for any claim or damage, direct or indirect, special or consequential, incurred by the reader arising out of the interpretation, reliance upon or other use of the information contained in this summary. This information is not intended to be and should not be construed in any way as part of an offering or solicitation of securities. No securities commission or other regulatory authority in Canada, the United States or any other country or jurisdiction has in any way passed upon the information contained in this summary.

***Adjacent Properties**

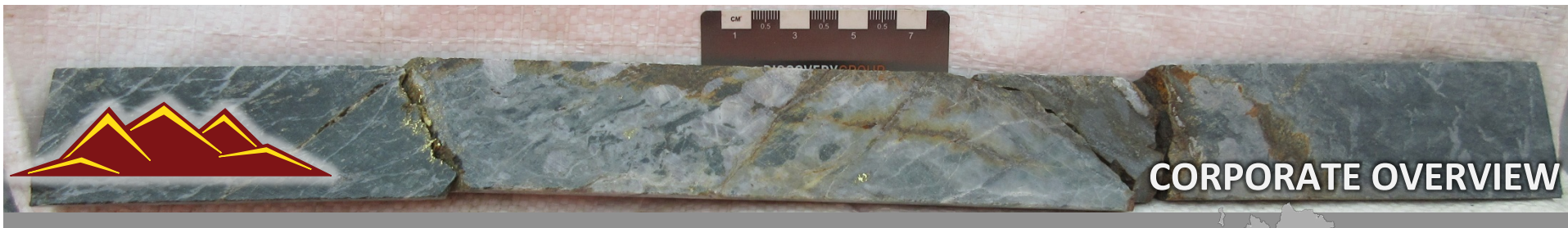
This presentation contains information about adjacent properties on which Colorado has no right to explore or mine. Investors are cautioned that mineral deposits on adjacent properties are not indicative of mineral deposits on the Company's properties.

Qualified Persons

Dr. Jim Oliver Ph.D, P.Geo., Company Chief Geoscientist is the Qualified Person as defined by National Instrument 43-101 who supervised/reviewed the work program and preparation of the technical data in this presentation.

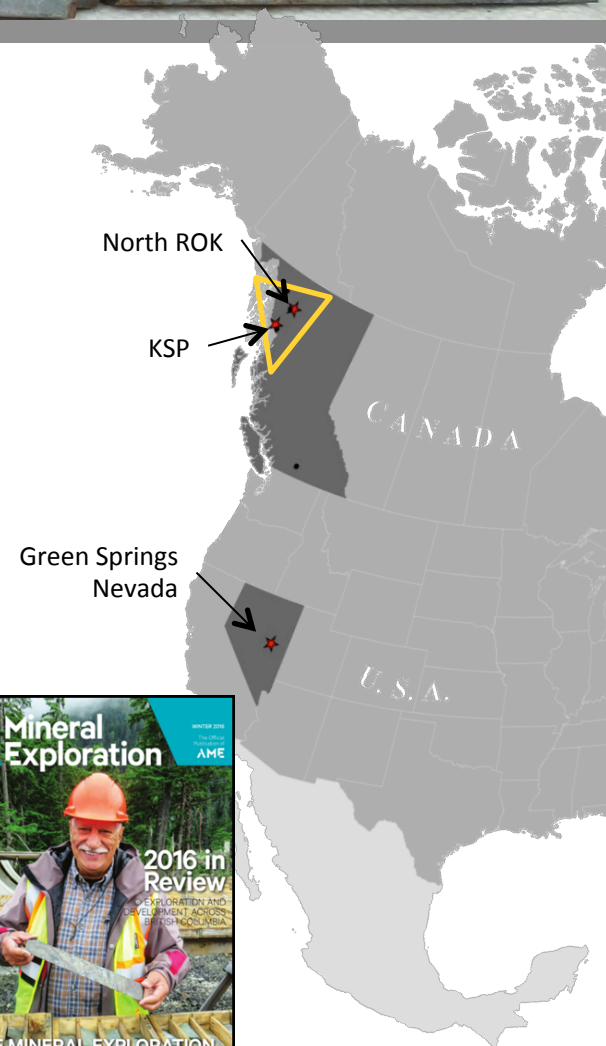
***** Readers are cautioned that the exploration targets at the Company's British Columbia properties are early-stage exploration prospects, conceptual in nature. There has been insufficient exploration to define a mineral resource and it is uncertain if further exploration will result in the target being delineated as a mineral resource.***

******Historical information contained in this presentation, maps or figures regarding the Company's project or adjacent properties cannot be relied upon as the Company's QP, as defined under NI-43-101 has not prepared nor verified the historical information.***



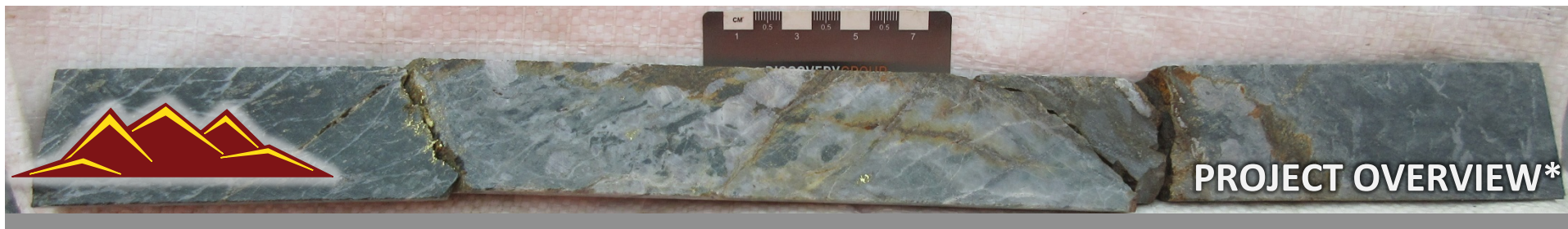
Company Highlights

- Geologically focused and technically skilled management and board with excellent track record of success
- All active projects are in safe, stable, pro development regions with good infrastructure
- Largest landholding of any junior explorer in the Golden Triangle
- Colorado acquires **100% ownership in the KSP Property** from SnipGold Corp. a wholly owned subsidiary of Seabridge Gold Inc.
- **Strategic Investment by GoldCorp Inc.** in the Summer 2017
- Green Springs, Nevada. Top Gold Mining Jurisdiction in the World

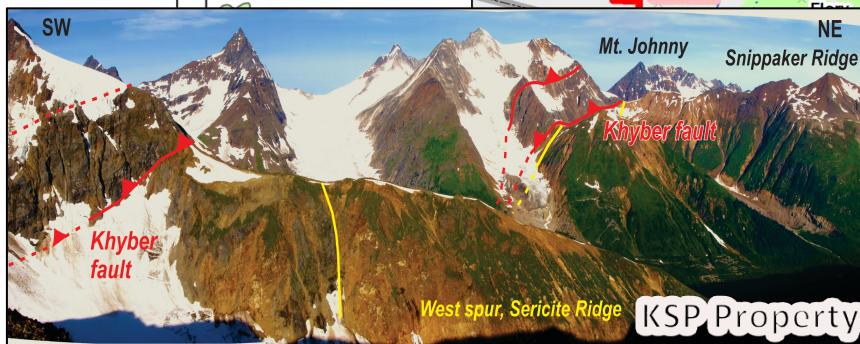
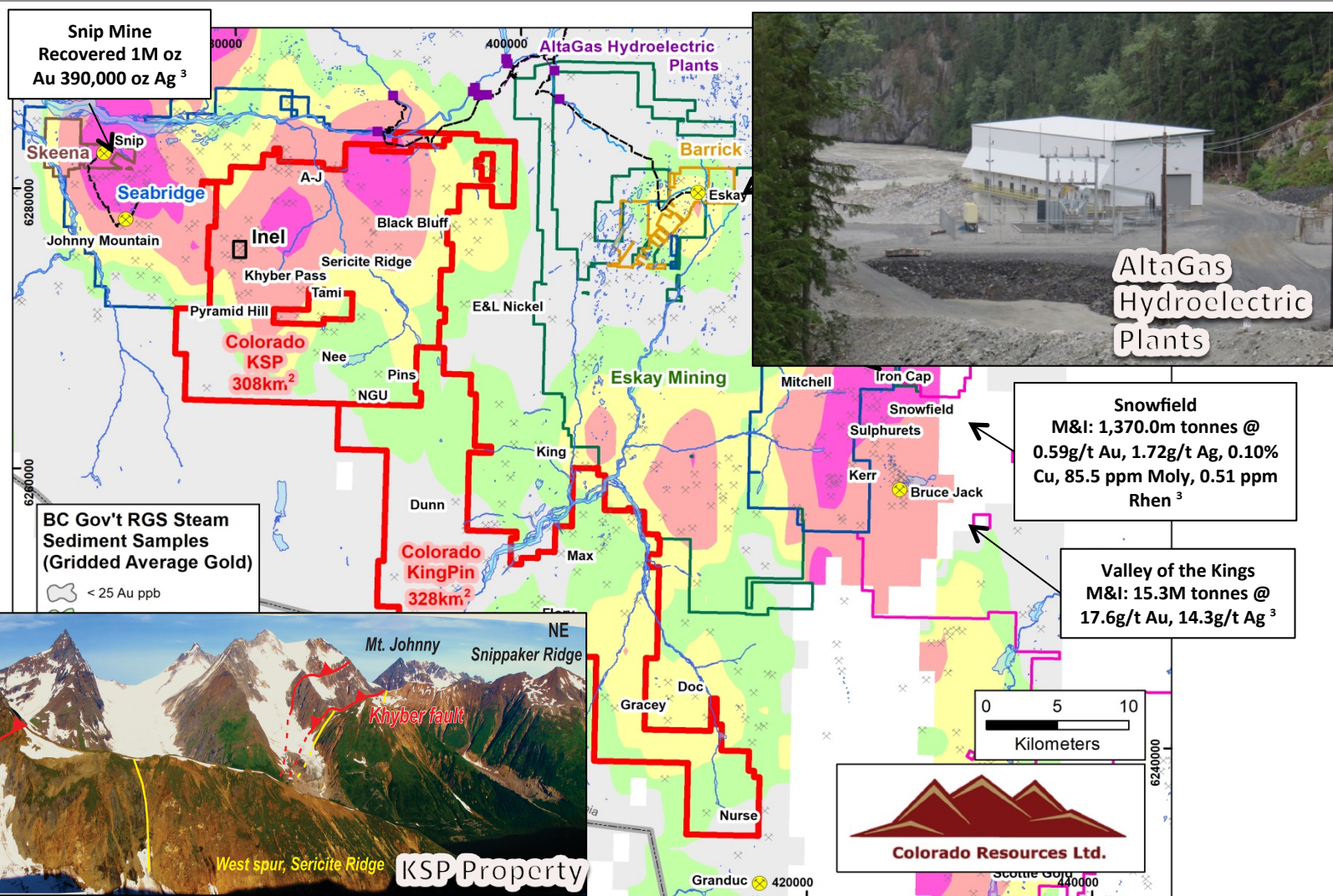
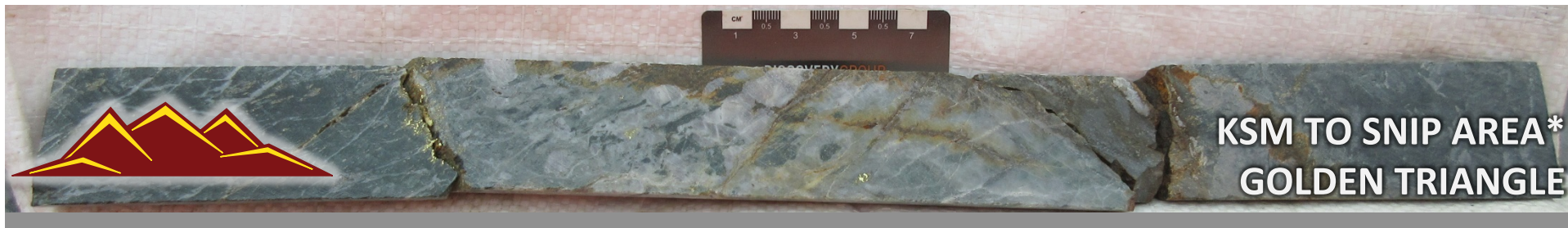


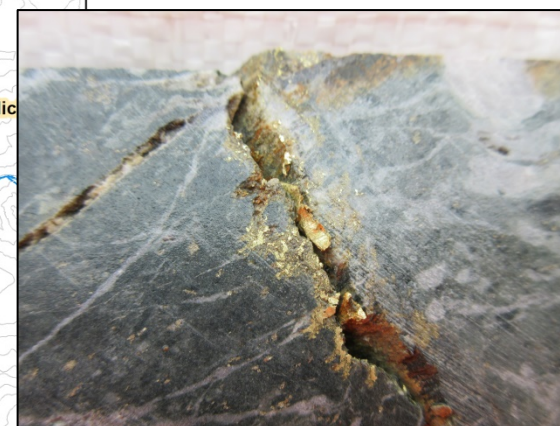
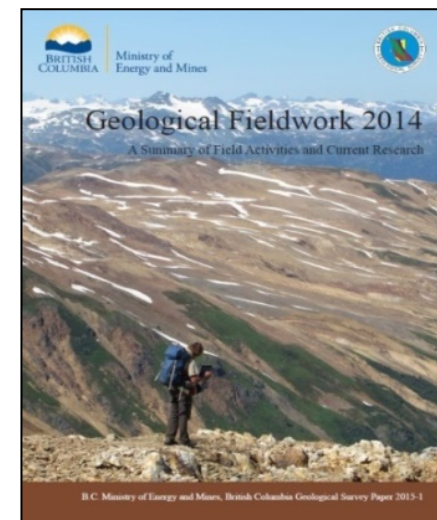
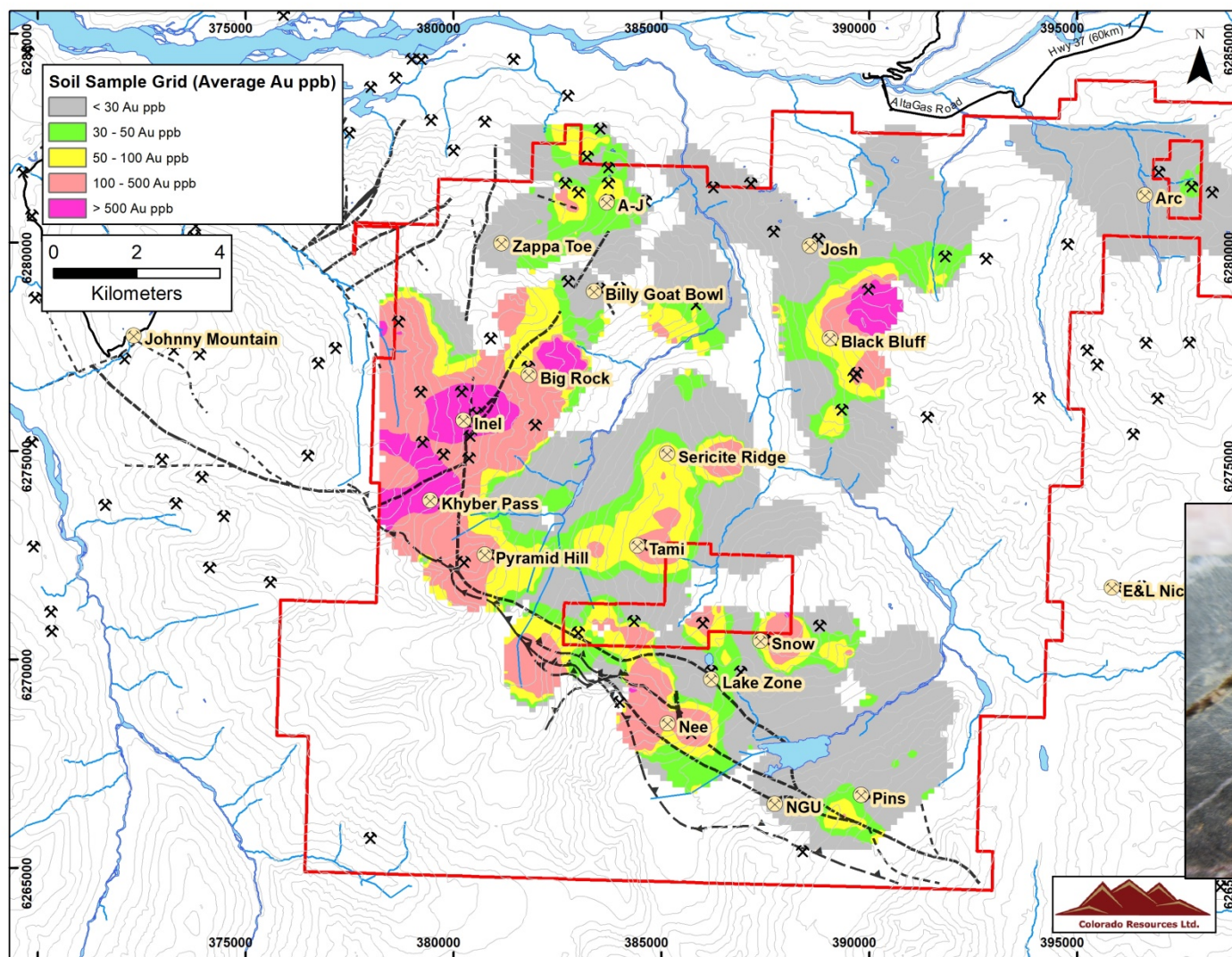
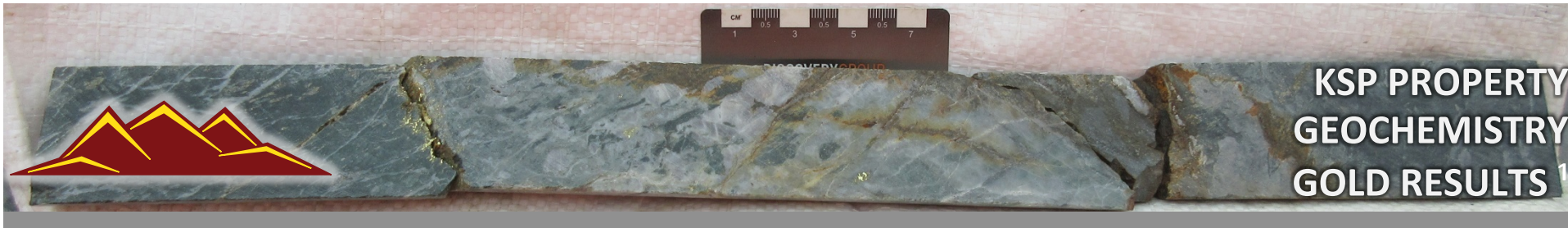
Corporate Structure	
IPO	November 2010
Stock Exchange and Symbol	TSX.V: CXO
Shares Outstanding	121,240,386
Share Price	\$0.335 (September 18, 2017)
Market Capital	\$40.6M (September 18, 2017)
Working Capital	\$5.56M (June 30, 2017)





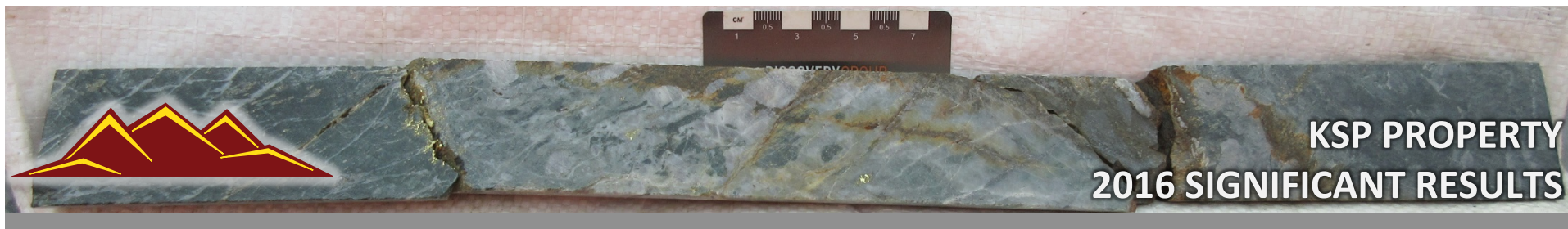
Colorado Projects	Description
KSP, B.C	100% owned, 308 sq km Property with High grade Au and large Porphyry Cu- Au potential, located 40km NW of Pretivm's BruceJack Property and Seabridge's KSM Property.
North ROK, B.C	100% Colorado Resources Porphyry Cu – Au Discovery (2013) near Imperial Metals' Red Chris Mine, Inferred Resource ¹ completed in January 2014.
Kinaskan-Castle, B.C	100% owned, next to the Skeena Resources' GJ and Spectrum and GT Gold's Tatogga Property and 25km NW from Red Chris Mine.
KingPin, B.C	100% owned, 328 sq km Property with 35 minfile occurrences on strike between past producing Granduc mine and CXO KSP Property.
Heart Peaks, B.C	100% owned, Epithermal Au, good potential to find high grade gold mineralization at shallow to moderate depths
Hit, B.C	100% owned, Large land holding in the Aspen Grove porphyry Cu-Au trend between Copper Mountain and New Afton.
Green Springs, Nevada	Green Springs is a past operating heap leach gold mine which produced 1.1 million metric tons of ore averaging 2.1 g/t gold and is prospective for Carlin-style gold and silver mineralization ² . Successful in encountering drill intercepts in 3 target zones during 2017 drilling.





Visible Gold in core photos. Part of the 33.5m to 38.0m in INDDH17-081, as announced in NR17-18

Footnotes: 4,5,6,7

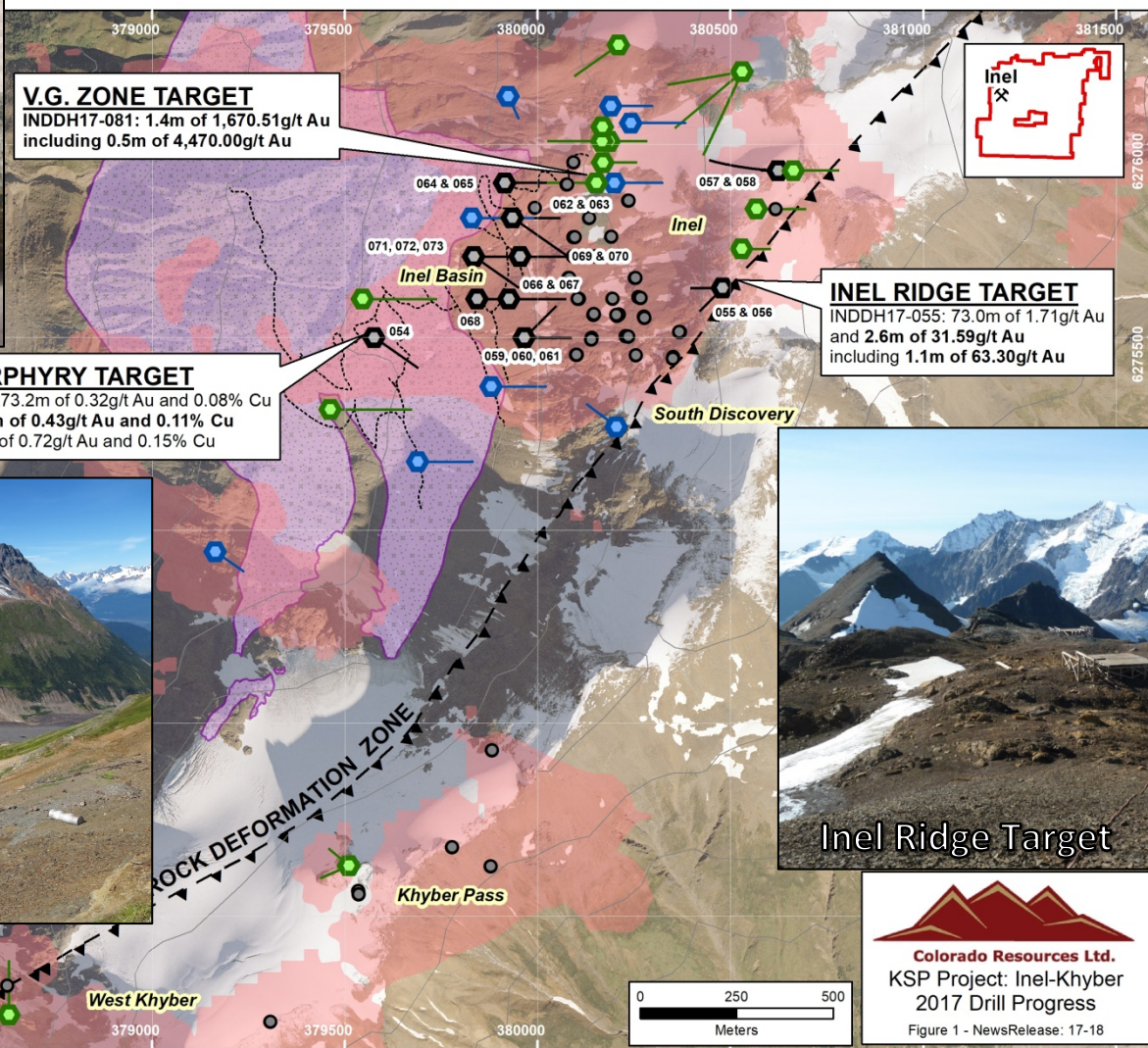
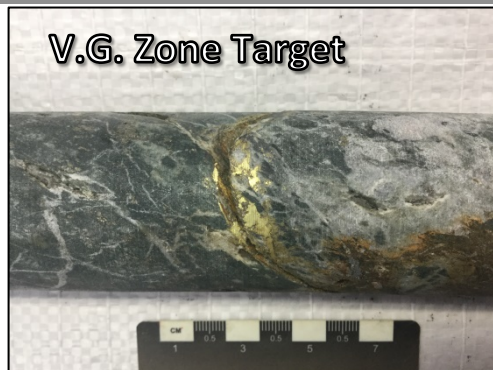
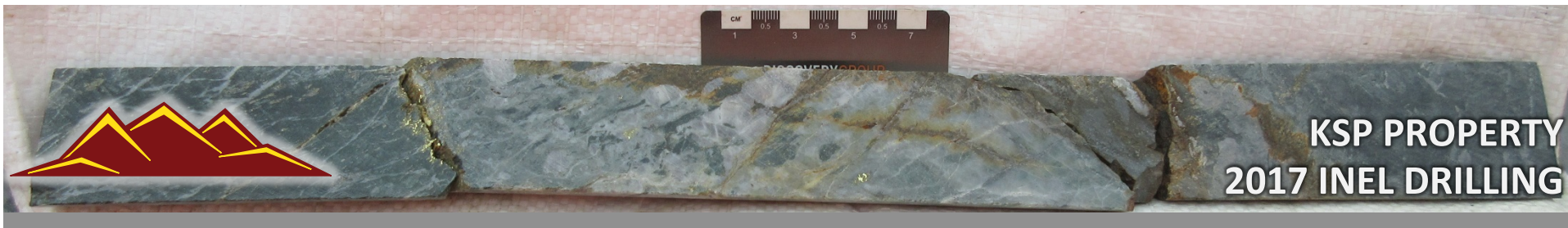


Hole ID	Hole Length (m)	From (m)	To (m)	Interval (m) ²	Au (g/t)
INDDH16-001	105.0	64.0	105.0	41.0	2.02
including		72.0	86.0	14.0	5.33
including		73.0	82.0	9.0	7.20
including		79.0	82.0	3.0	8.60
INDDH16-002	162.0	124.0	128.0	4.0	8.56
INDDH16-003	129.0	6.0	41.1	35.1	1.59
including		31.0	33.0	2.0	18.70
and		93.0	116.2	23.2	4.12
including		101.0	115.0	14.0	6.42
including		103.0	111.0	8.0	9.99
INDDH16-004	165.0	58.0	149.0	91.0	1.02
including		89.0	118.0	29.0	1.49
including		130.0	149.0	19.0	1.59
INDDH16-006		12.5	65.9	53.4	1.36
including		25.6	31.0	5.4	5.70
and		85.0	118.0	33.0	1.14
INDDH16-007		19.0	35.0	16.0	1.40
INDDH16-008		30.0	54.0	24.0	1.30
and		85.0	101.8	16.8	1.60
and		118.0	130.0	12.0	1.91
INDDH16-009	111.0	19.9	111.0	91.1	1.18
including		51.0	65.1	14.1	3.25
including		51.0	54.7	3.7	8.58
INDDH16-010		51.0	66.0	15.0	1.61
and		74.0	91.0	17.0	1.39
INDDH16-012	117.0	85.3	117.0	31.7	1.36
INDDH16-016	159.0	34.0	62.0	28.0	1.64

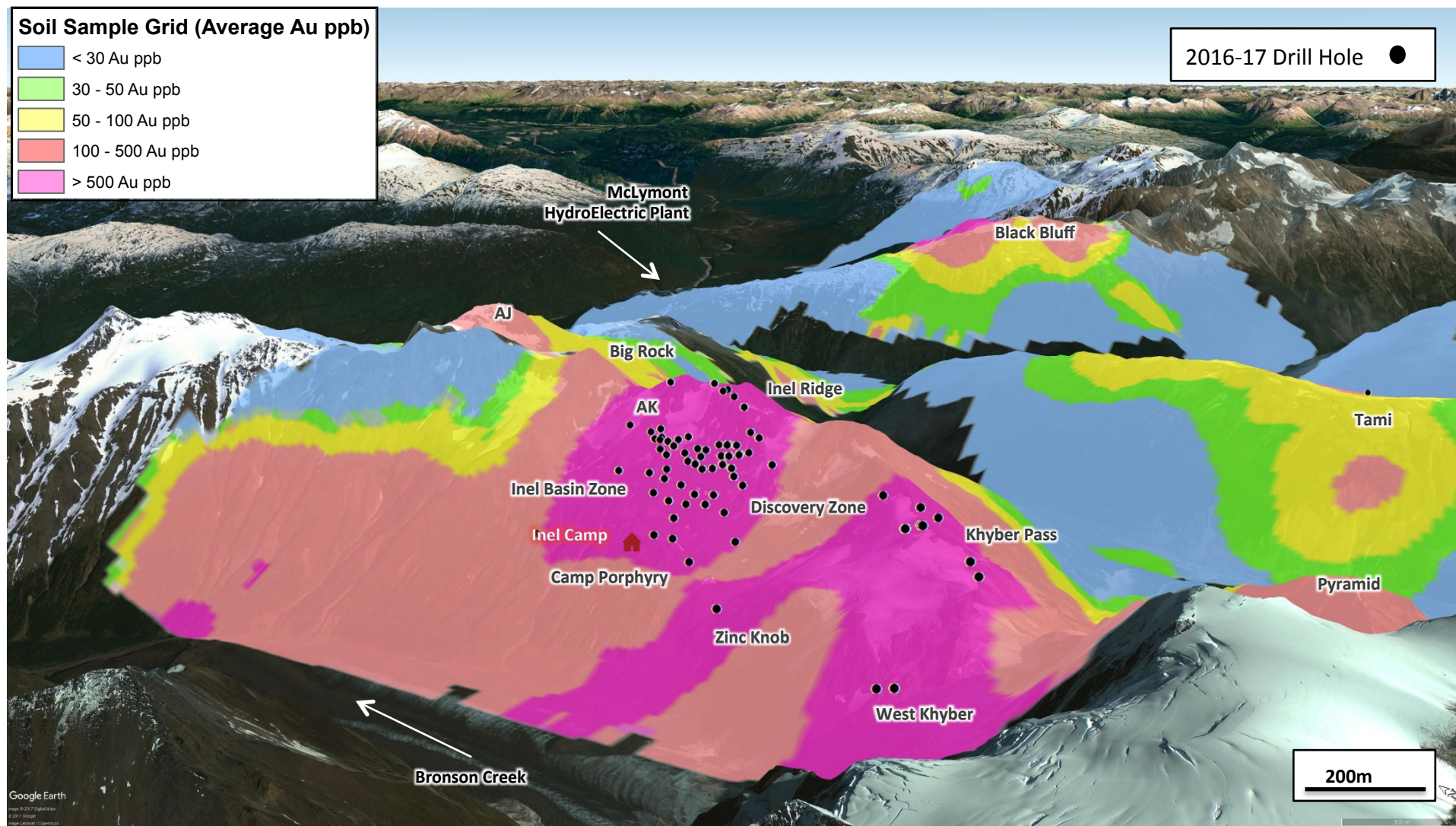
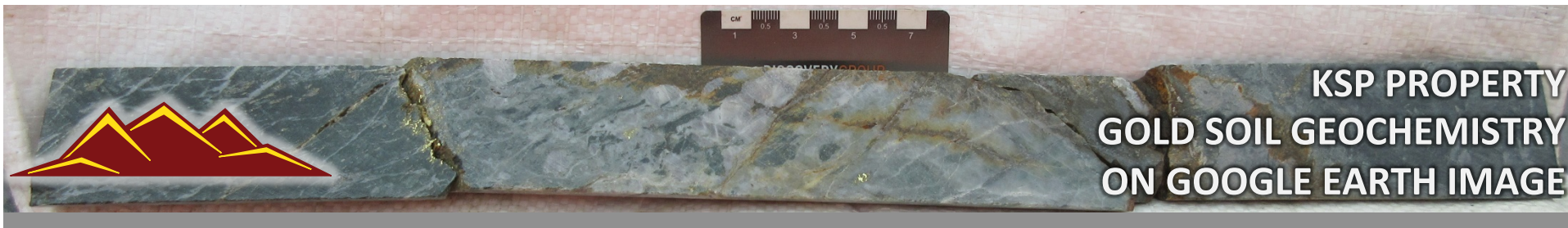
Hole ID	Hole Length (m)	From (m)	To (m)	Interval (m) ²	Au (g/t)
INDDH16-017	130.5	8.0	35.0	27.0	1.48
including		9.0	12.9	3.9	5.30
and		108.0	119.0	11.0	3.59
including		113.0	115.0	2.0	14.27
INDDH16-018	150.0	8.0	83.2	75.2	1.23
and		50.0	55.5	5.5	8.94
including		52.0	55.0	3.0	13.91
INDDH16-022	96.0	32.8	74.0	41.3	0.92
including		70.0	74.0	4.0	6.74
INDDH16-023	111.0	26.0	72.3	4.3	1.03
and		62.0	72.3	10.3	2.06
INDDH16-025	141.0	23.0	141.0	118.0	1.82
including		45.0	46.0	1.0	138.50
and		102.0	125.0	23.0	1.10
INDDH16-026	126.0	40.0	98.0	58.0	0.88
including		81.4	94.0	12.6	2.70
INDDH16-028	126.0	28.0	80.0	52.0	1.12
including		29.0	40.0	11.0	2.85
INDDH16-029	144.0	44.0	96.0	52.0	4.93
including		44.0	88.0	44.0	6.07
including		45.0	54.0	9.0	21.62
including		48.0	54.0	6.0	32.22
including		50.0	52.0	2.0	89.13
and		54.0	73.0	19.0	2.29
INDDH16-034	159.0	97.0	138.0	41.0	1.00
including		97.0	103.0	6.0	3.57
INDDH16-041	219.0	25.0	45.0	20.0	1.09

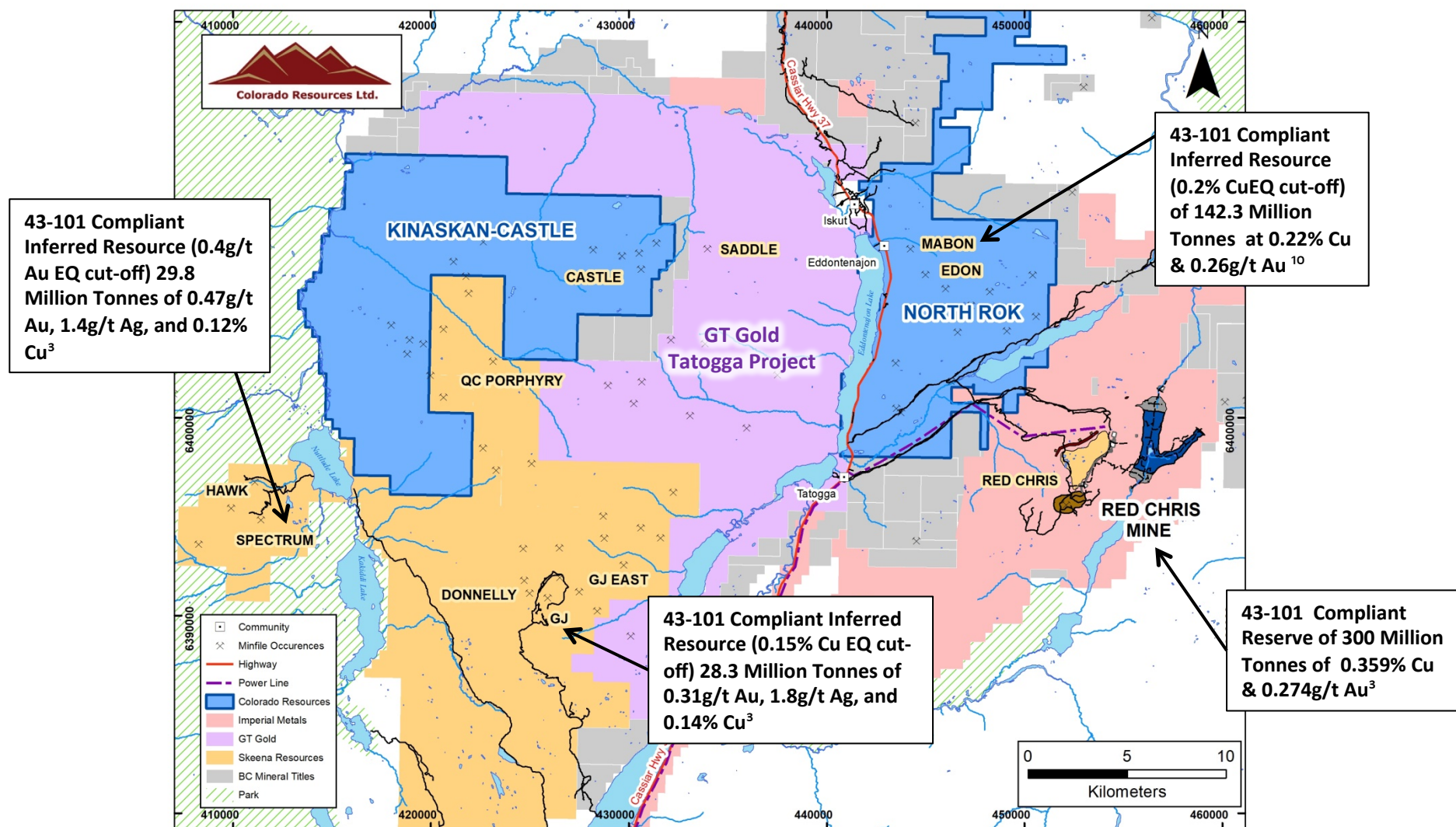
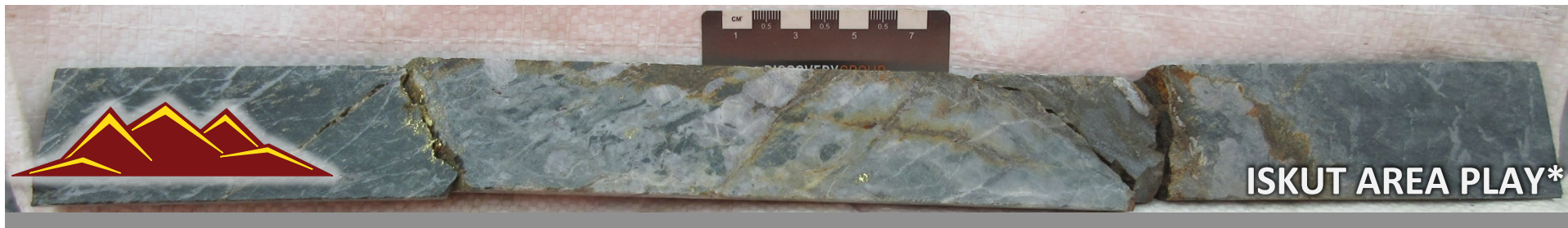
Hole ID	Hole Length (m)	From (m)	To (m)	Interval (m) ²	Au (g/t)
INDDH16-042	222.0	35.0	52.0	17.0	4.23
including		35.0	39.0	4.0	16.02
including		35.0	36.0	1.0	53.10
and		146.0	220.0	74.0	1.02
including		171.0	187.0	16.0	2.69
INDDH16-044		145.5	177.0	31.5	1.46
INDDH16-046	141.0	39.0	141.0	102.0	1.36
including		39.0	65.0	26.0	2.13
including		60.0	62.0	2.0	16.49
and		113.3	129.0	15.7	3.89
including		113.3	117.0	3.7	14.59
INDDH16-047		97.9	125.0	27.1	1.03
INDDH16-049	156.0	42.4	156.0	113.6	1.67
including		92.0	156.0	64.0	2.73
including		97.0	128.0	31.0	4.00
including		92.0	98.0	6.0	9.00
including		97.0	98.0	1.0	47.60
and		118.0	129.0	11.0	4.69
including		123.0	128.0	5.0	7.89
including		126.0	128.0	2.0	10.17
and		139.0	140.7	1.7	11.92
INDDH16-050		120.0	128.0	8.0	2.85
INDDH16-051		159.0	177.0	18.0	1.56

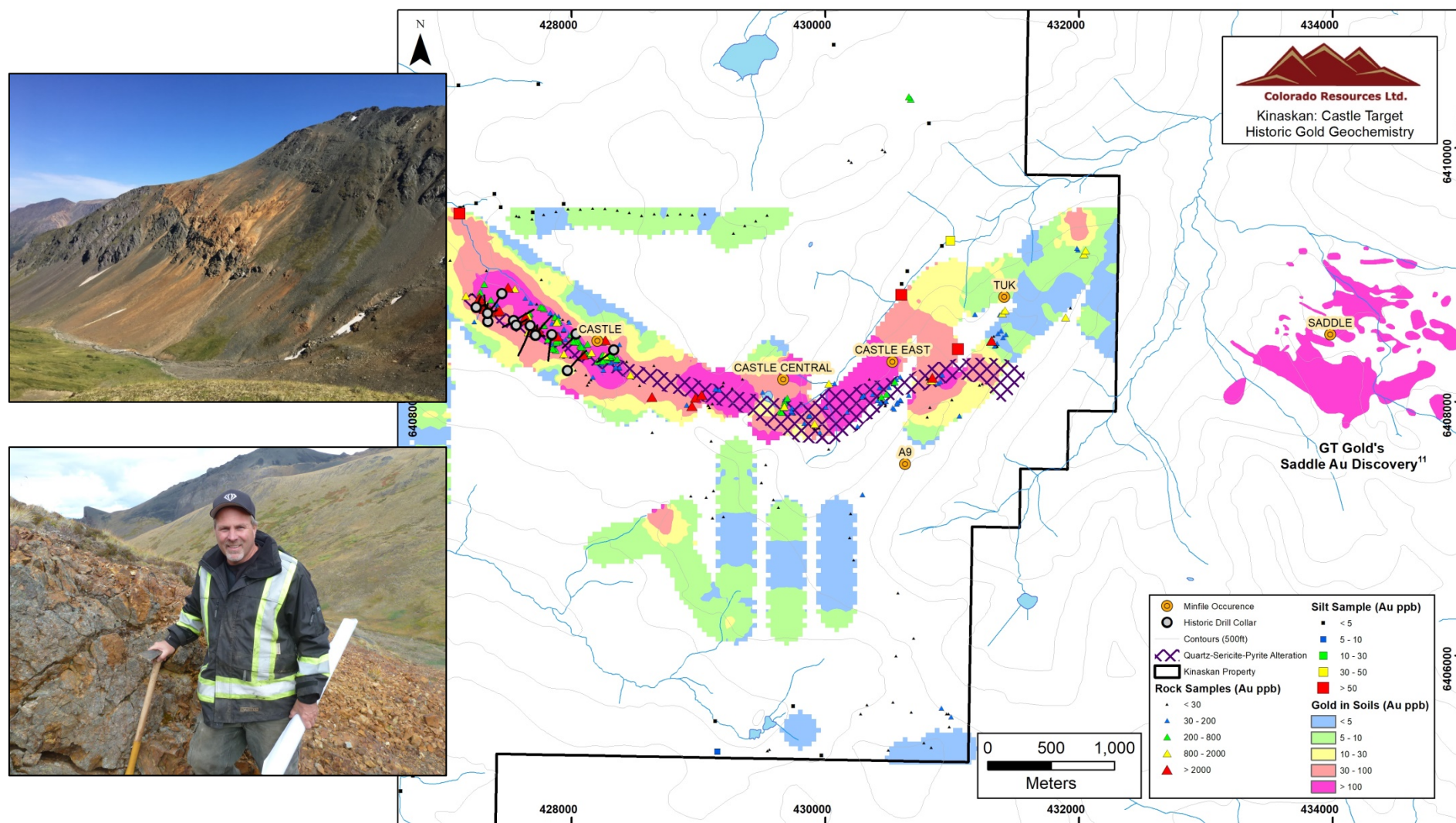
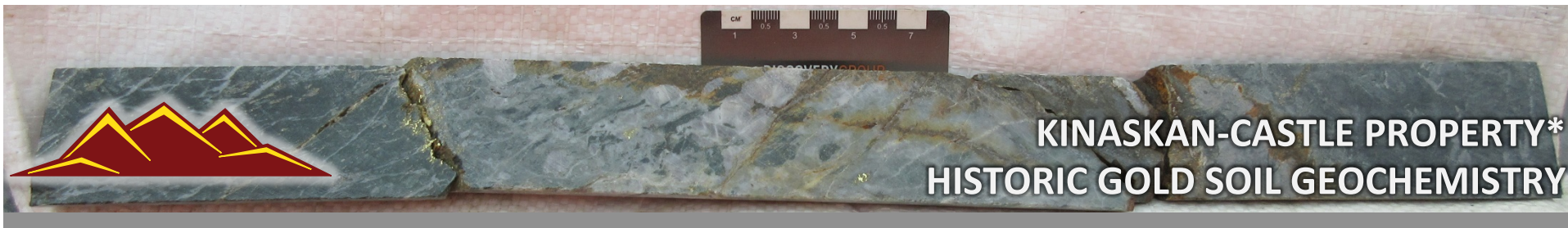
1- Significant Defined as the product of metres x grade > 20 with grade >1.00g Au, **BOLD** >50 gram/meters
2 - The intervals reported in the above table represent drill intercepts and insufficient data is available at this time to state the true thickness of the mineralized intervals and all values are uncut



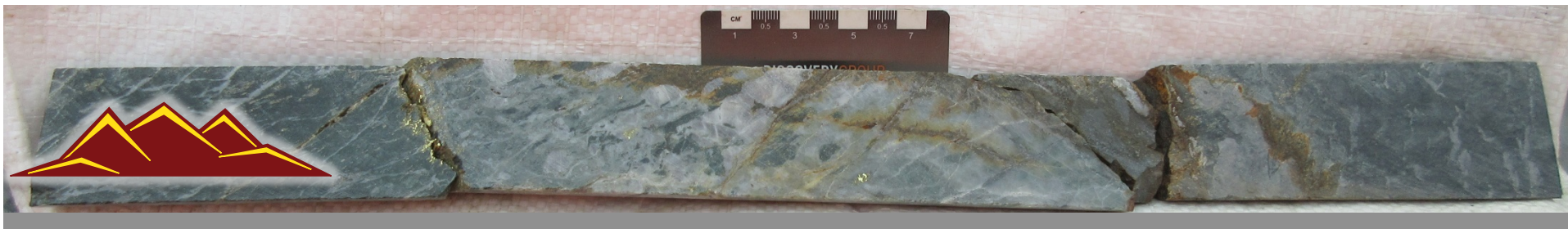
Footnotes:
4,5







Footnotes: 3, 12



Colorado Resources LTD

#105-3500 Carrington Road
West Kelowna, British Columbia
Canada V4T 3C1

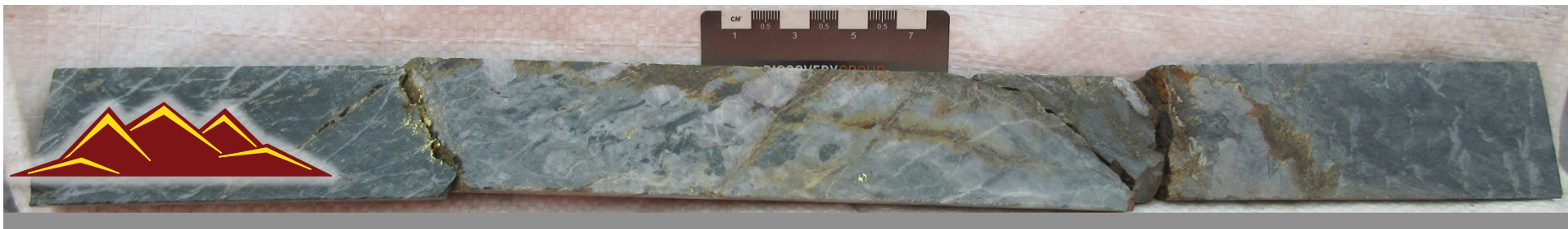
Phone: (250) 768-1511

Fax: (250) 768-0849

Toll Free: (855) 768-1511

info@coloradoresources.com

www.coloradoresources.com



Footnotes

¹ Mineral Resources are not Mineral Reserves and do not have demonstrated economic viability. There is no certainty that all or any part of the Mineral Resources estimated will be converted into Mineral Reserves estimate.

² Sourced from: Wilson, et al, 1991. *Geology and Geochemistry of the Green Springs Gold Mine, White Pine County, Nevada* in Raines, GL, Lisle, RE, Schafer, RW and Wilkinson, WH, eds. *Geology and ore deposits of the Great Basin – Symposium proceedings: Reno, Geological Society of Nevada*, p. 687-700.

³ The QP has been unable to verify the information and that the information is not necessarily indicative of the mineralization on Colorado's properties that is the subject of this presentation.

⁴ Previous exploration over a 8.5 km² area at Inel includes over 190 historic drillholes, 6,500m of drillcore assays, 723 soil samples and 1100 rock chip, channel and grab samples. These samples were collected prior to the Company's involvement and have not been independently verified. The Company has collected 135m of drillcore assays on the un-sampled historical drillcore, 492 soil samples and 400 rock chip, channel and grab samples in the area which generally confirm these previous exploration results. The historical drill intercepts quoted represent core lengths and there has been insufficient exploration to date to indicate whether or not they may represent the true thicknesses of the mineralized intervals.

⁵ Please visit the Company website at: www.coloradoresources.com for QA/QC Procedures

⁶ Nelson, J., & Kyba, J. (2014, January). Structural and stratigraphic control of porphyry and related mineralization in the Treaty Glacier-KSM-Brucejack-Stewart trend of western stikinia. *Geological Fieldwork 2013, British Columbia Ministry of Energy and Mines, British Columbia Geological Survey Paper*, pp. 111-140.

⁷ Kyba, J., & Nelson, J. (2015, January). Stratigraphic and tectonic framework of the Khyber-Sericite-Pins mineralized trend, lower Iskut River, northwest British Columbia. *Geological Fieldwork 2014, British Columbia Ministry of Energy and Mines, British Columbia Geological Survey Paper*, pp. 41-58.

⁸ <http://www.empr.gov.bc.ca/mining/geoscience/aris/Pages/default.aspx>

⁹ Google earth images: www.googleearth.com image copied on April 5, 2016

¹⁰ Cu EQ (copper equivalent) has been used to express the combined value of copper and gold as a percentage of copper and is provided for illustrative purposes only. No allowances have been made for recovery losses that may occur should mining eventually result. Copper equivalent calculations herein use metal prices of US \$3.25/lb of copper and US \$1,318 per troy ounce of gold using the formula $CuEQ = (Cu\% + 71.65) + (Au \text{ g/t} * 42.37) / (71.65)$.

¹¹ GT Gold Corp Saddle Gold Discovery. Corporate Presentation: Digitized from map on page 8. http://www.gtgoldcorp.ca/_resources/corporate-presentation.pdf September 11, 2017

¹² Historical soil sample results from Kinaskan-Castle Property: BC Assessment Report: 03291, 09117, 09878, 14739, 16897, 18420, 20521, 20687, 20867, 21858 A&B, 22658, 25432A, 27737, 33422, 34551