



*~ One  
of the best gold  
prospects in  
Nevada ~*

This presentation contains forward-looking statements. Forward-looking statements are statements that relate to future, not past events. In this context, forward-looking statements often address NuLegacy's expected future business and financial performance, and often contain words such as "anticipate", "believe", "plan", "estimate", "expect", and "intend", statements that an action or event "may", "might", "could", "should", or "will" be taken or occur, or other similar expressions. By their nature, forward-looking statements involve known and unknown risks, uncertainties and other factors which may cause our actual results, performance or achievements, or other future events, to be materially different from any future results, performance or achievements expressed or implied by such forward-looking statements. Such factors include, among others, risks associated with project development; the need for additional financing; operational risks associated with mining and mineral exploration; actual results of current and future exploration activities, fluctuations in gold and other commodity prices; title matters; environmental liability claims and insurance; reliance on key personnel; the absence of dividends; competition; dilution; the volatility of our common share price and volume; and tax consequences to U.S. Shareholders, as well as those factors discussed in NuLegacy's continuous disclosure documents filed on SEDAR at [www.sedar.com](http://www.sedar.com). Forward-looking statements are made based on management's beliefs, estimates and opinions on the date that statements are made and the Company undertakes no obligation to update forward-looking statements if these beliefs, estimates and opinions or other circumstances should change, save as required by applicable law. Investors are cautioned against attributing undue certainty or reliance upon forward-looking statements.

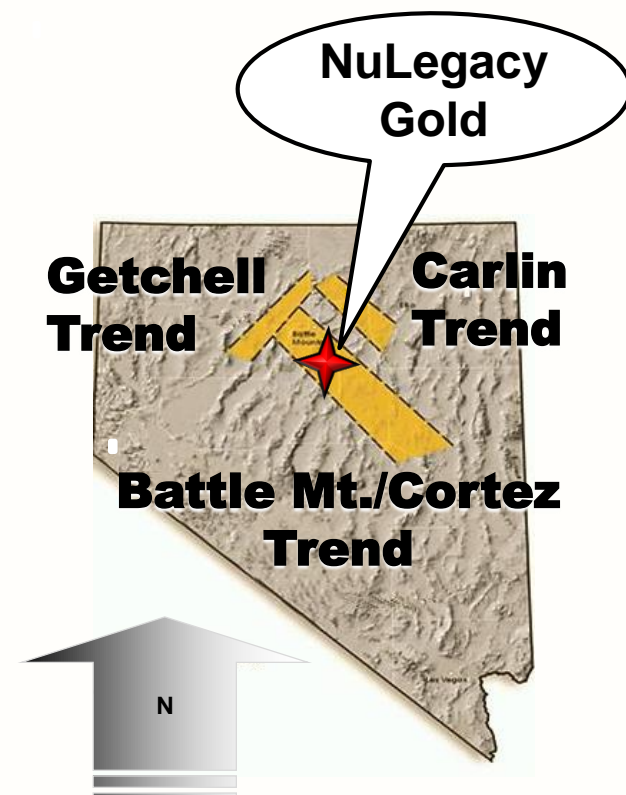
Dr. Roger Steininger CPG 7417, NuLegacy Gold's Chief Geoscience Officer and a Qualified Person under NI 43-101, has reviewed and approved the scientific and technical disclosure contained herein.

September 15, 2017



## NEVADA

- Politically stable.
- Huge gold endowments.
- Benign geography.
- Superior logistics.
- *No malaria, black flies, desert adders or crocodiles, just elephant-sized gold deposits!*

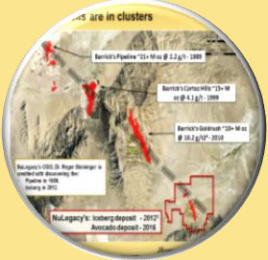


***“Nevada - the fifth largest gold producing ‘nation’ in the world”***





***“...opportunity to invest in the largest ‘independently’ owned land package in the prolific Cortez gold-trend of Nevada...”***



**98 sq. km of the Cortez trend – on strike with three of Barrick Gold's best gold deposits.**



**BOD includes three former (and foundational) senior Barrick Gold executives.**



**World class shareholders including OceanaGold, Barrick Gold, Tocqueville; C\$10.5 million in treasury.**



**Discovering Carlin-style and Epithermal gold deposits.**



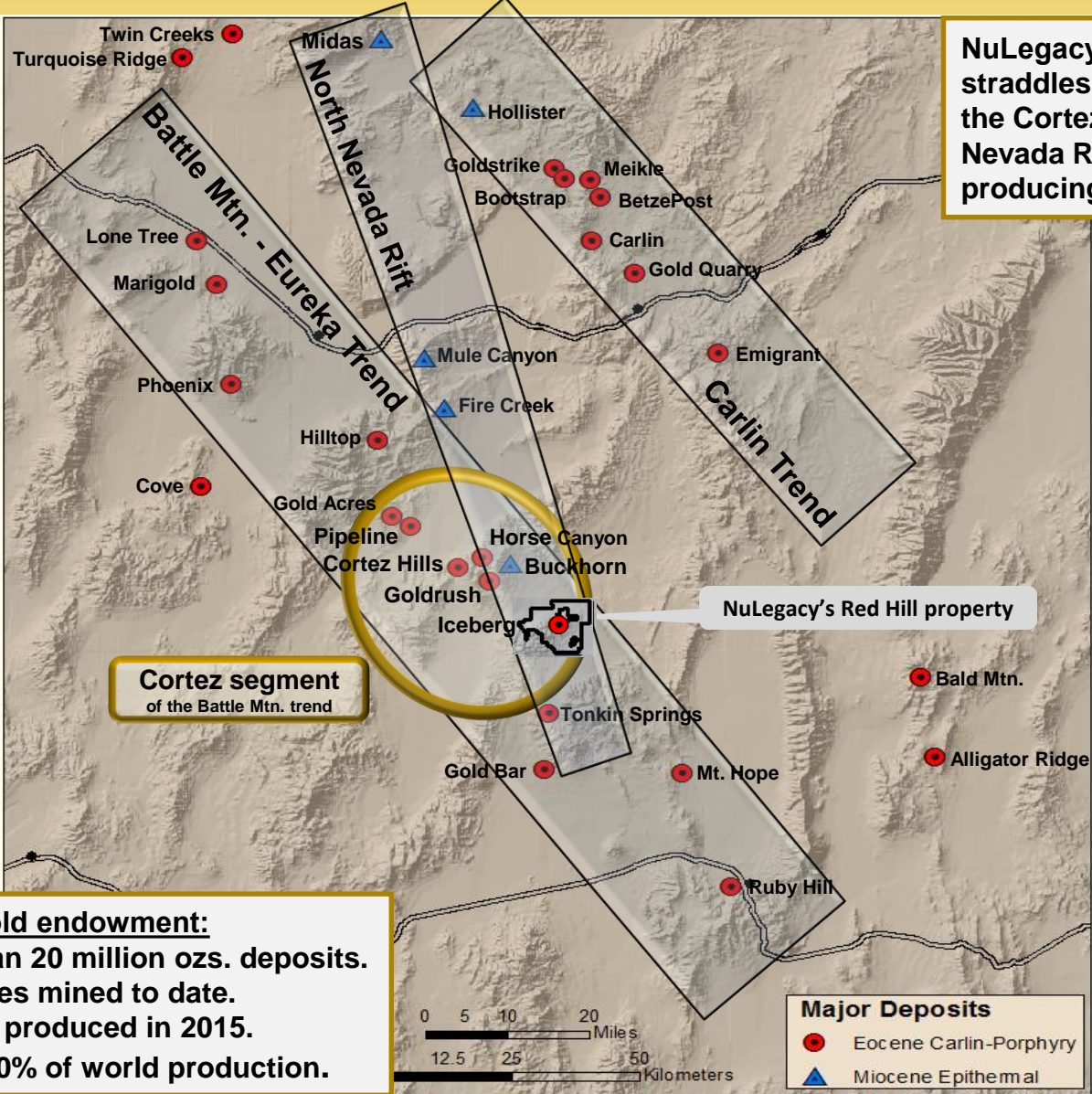
**Drilling 33,500 feet (~40 holes). Geo-surveying to identify additional targets.**

# Capital structure/ownership distribution

Shares outstanding	294.7 million
Warrants	31.4 million
Options	<u>25.7 million</u>
Fully diluted	351.2 million
52 week range	C\$0.16 to 0.54/sh.
Market capitalization	~ C\$ 66 million
Cash	~ C\$ 10.5 million
Proceeds on exercise of options & wts.	~ C\$ 21.0 million

Miners	Shares (millions)	%
OceanaGold	47.6	16.2
Barrick Gold	32.0	10.9
Institutions		
Tocqueville	28.6	9.7
Davenport LLC	14.5	4.9
Ingalls & Snyder	4.0	1.4
Public	~ 119	~ 40
Principals	49	16.9

# Nevada's target rich gold trends



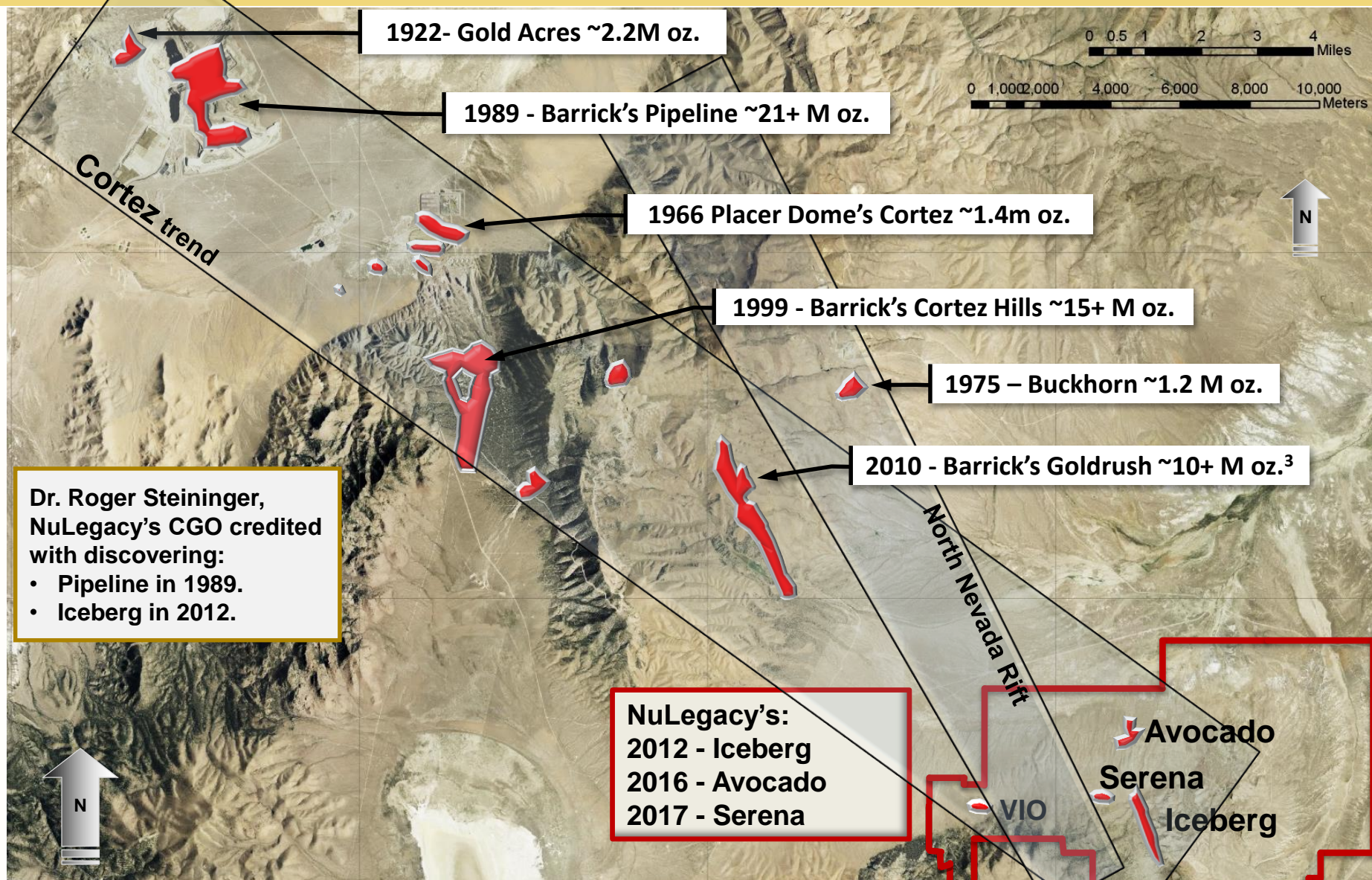
NuLegacy's Red Hill property straddles the convergence of the Cortez trend and the North Nevada Rift – two proven gold producing structures.

- Some of Nevada's gold endowment:**
- Several greater than 20 million ozs. deposits.
  - ~ 220 million ounces mined to date.
  - 5.3 million ounces produced in 2015.
  - ~ 80% of US and 10% of world production.

NB. Bootstrap, BetzePost, Meikle, West Leeville and Genesis are now refereed to as Goldstirke, just as the Pediment, Horse Canyon, ET Blue and Goldrush are referred to as Goldrush.

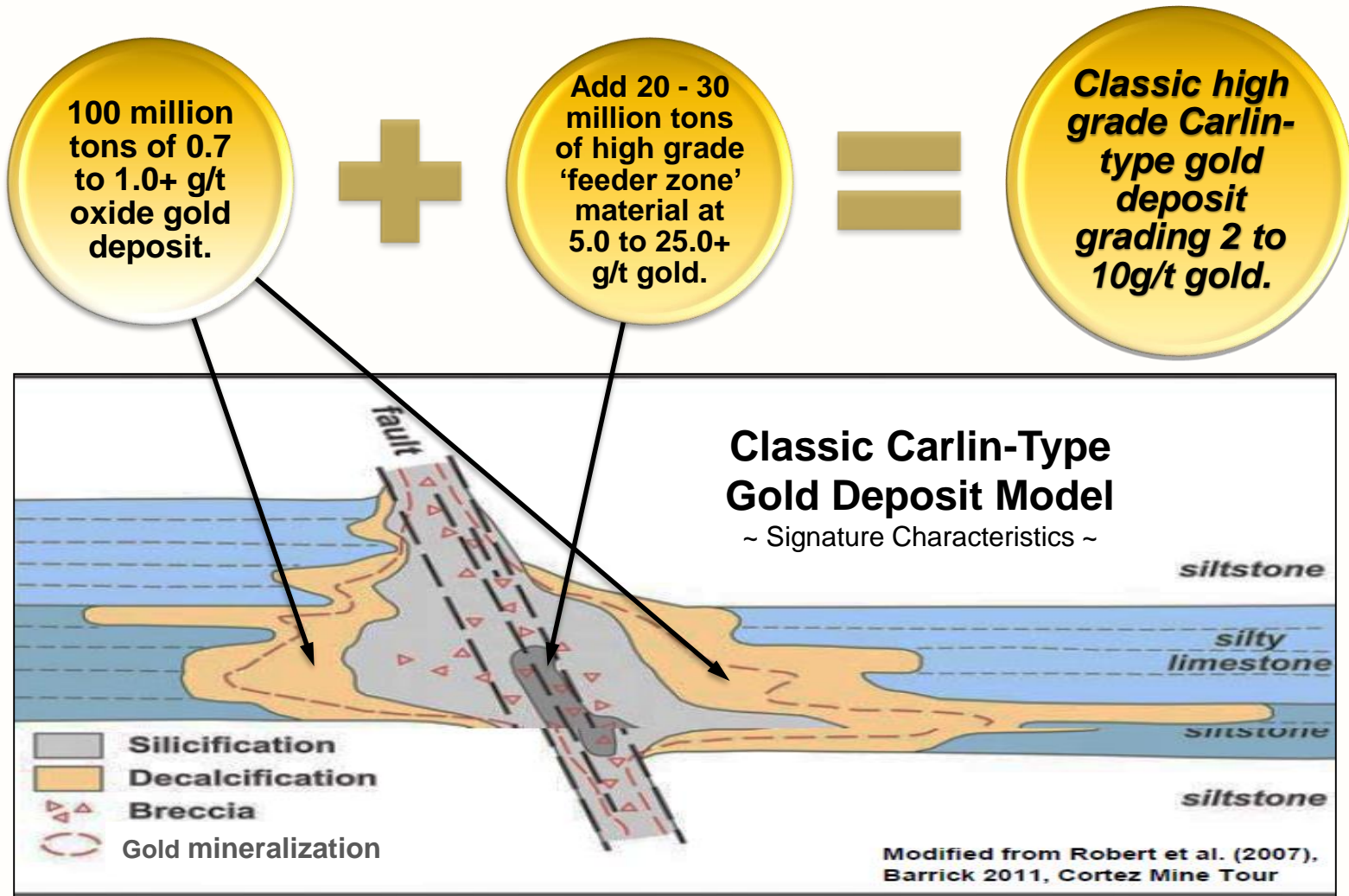


# Cortez trend: clusters of Carlin-style gold deposits





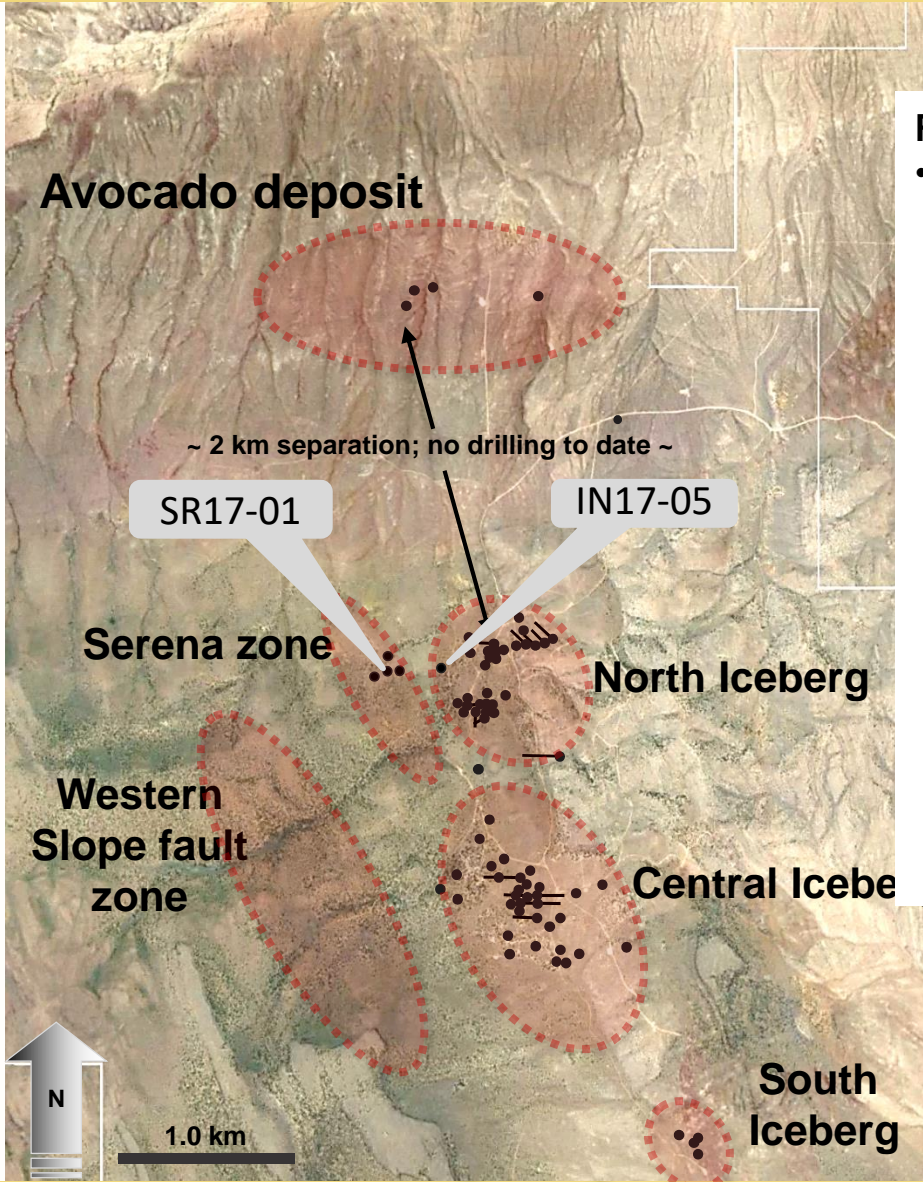
# The making of Nevada's elephants.



"...numerous successful Nevada heap-leach operations are based on large volumes of ~ 0.5 to 1.0 gram/tonne of near surface oxide gold resources..."



# NuLegacy's ~10 sq km of gold mineralization

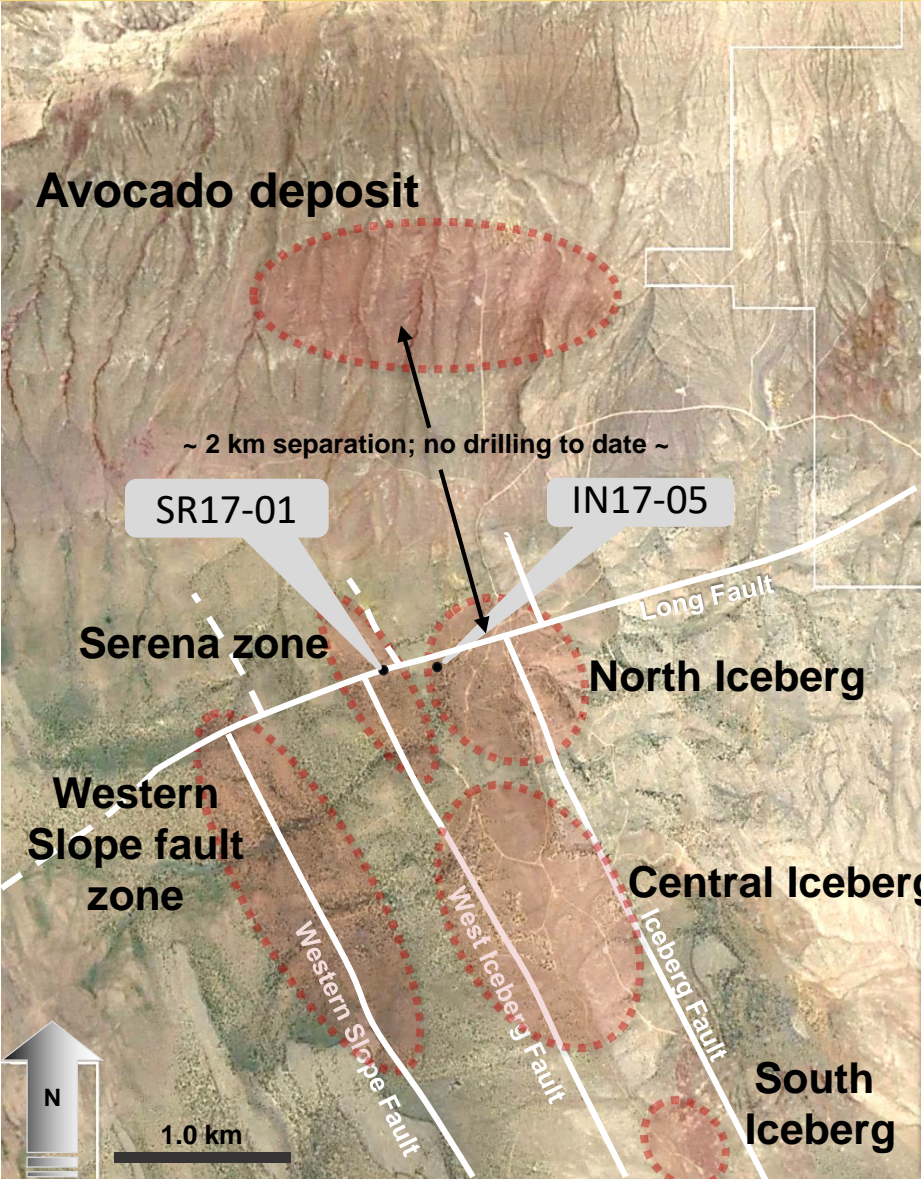


**Red Hill deposits:**

- The Icebergs: near-surface ~ 90-110 million tonnes exploration target grading 0.7 to 1.0+ grams of gold/t: (figures are conceptual – see endnote #1 page #27)
- Five known mineralized zones over 6+ km strike length.
- Multiple gold bearing horizons/open in multiple directions.
- VIO to the west and Western Slope untested
- Test leaching recoveries of 74.5+%.<sup>3</sup>

VIO (4 km further west)

VIO (4 km further west)

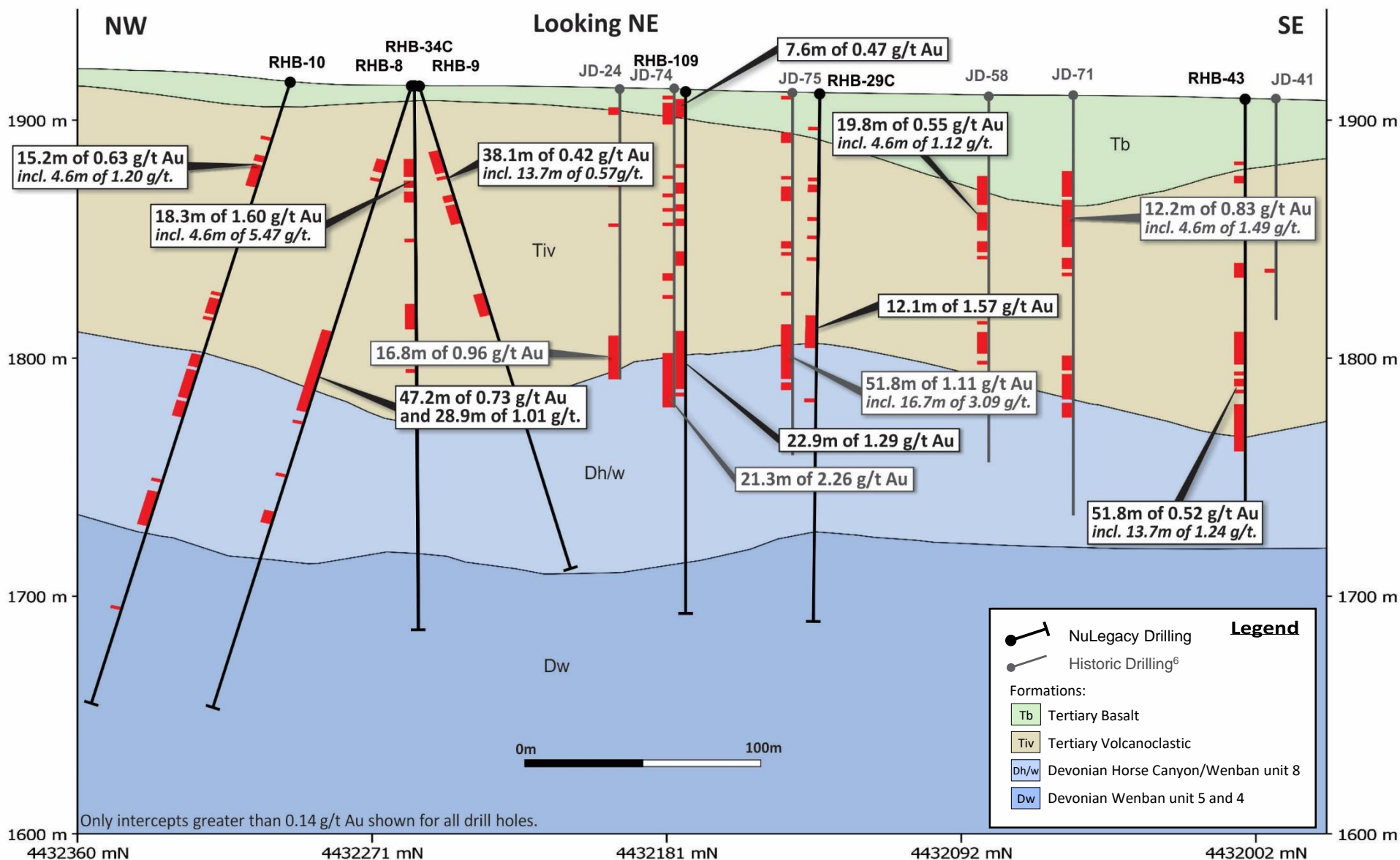


**Faults**

- Identified
- - Inferred



# Iceberg central zone – long-section

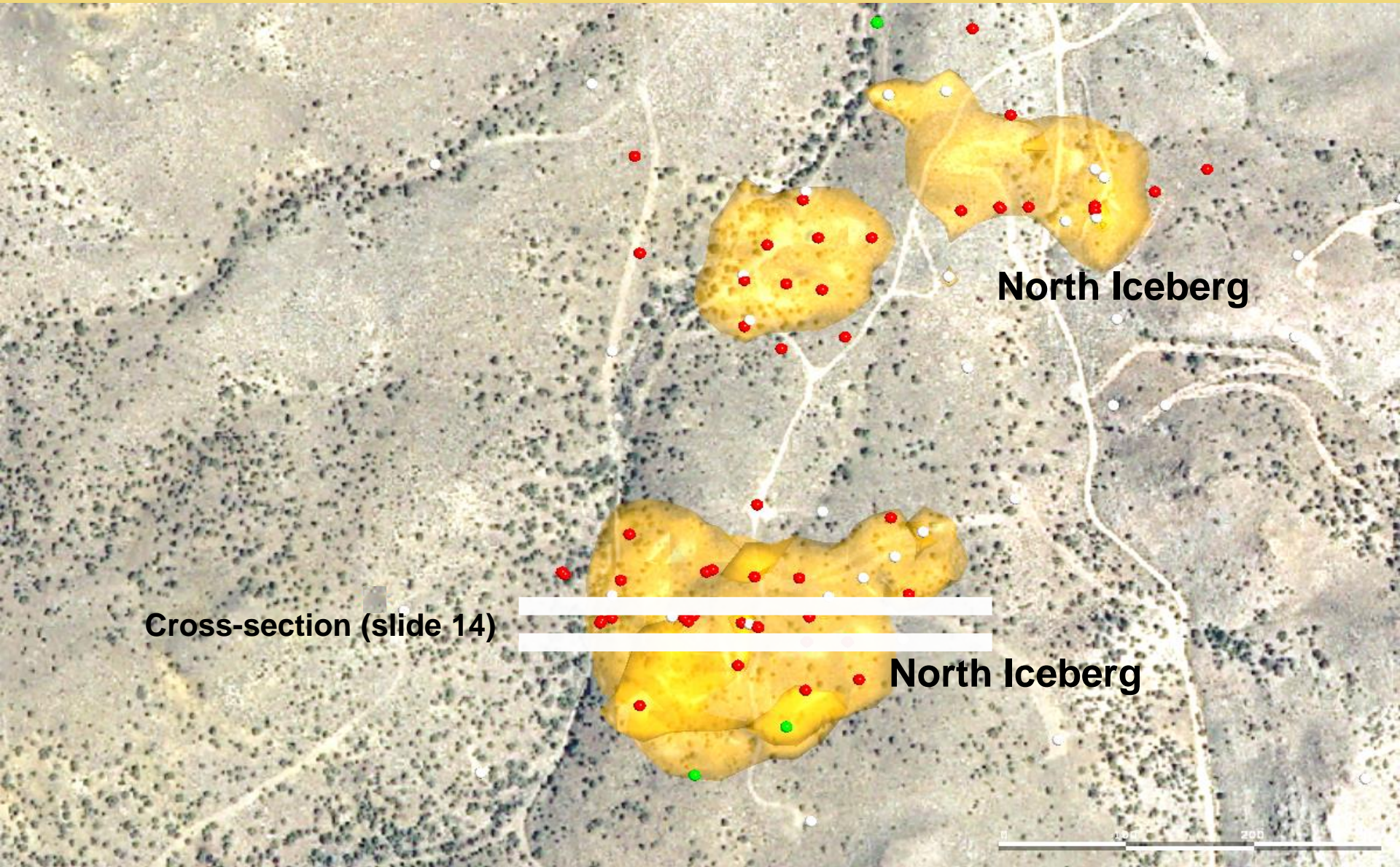


## Central Zone – oxidized mineralization

Selected multi-meter multi-gram intercepts greater than 1.0 gram<sup>5</sup>

Hole	Intercept (m)		Thickness	Grade
Number	From	To	(m)	(g/t)
RHB-06	120.4	147.8	27.4	1.40
<i>including</i>	128.0	138.7	10.7	2.60
RHB-08	120.5	167.6	47.1	0.73
<i>including</i>	131.1	160.0	26.9	1.01
RHB-30	127.3	139.4	12.1	3.16
RHB-34	30.5	48.8	18.3	1.60
<i>including</i>	44.2	48.8	4.6	5.47
RHB-60	120.4	155.5	35.1	1.04
<i>including</i>	141.8	149.4	7.6	3.64
JD-32 <sup>6</sup>	35.1	91.4	56.3	1.02
<i>including</i>	67.1	77.7	10.7	4.08
JD-74 <sup>6</sup>	112.8	134.1	21.3	2.26
JD-75 <sup>6</sup>	97.5	120.4	22.9	2.40





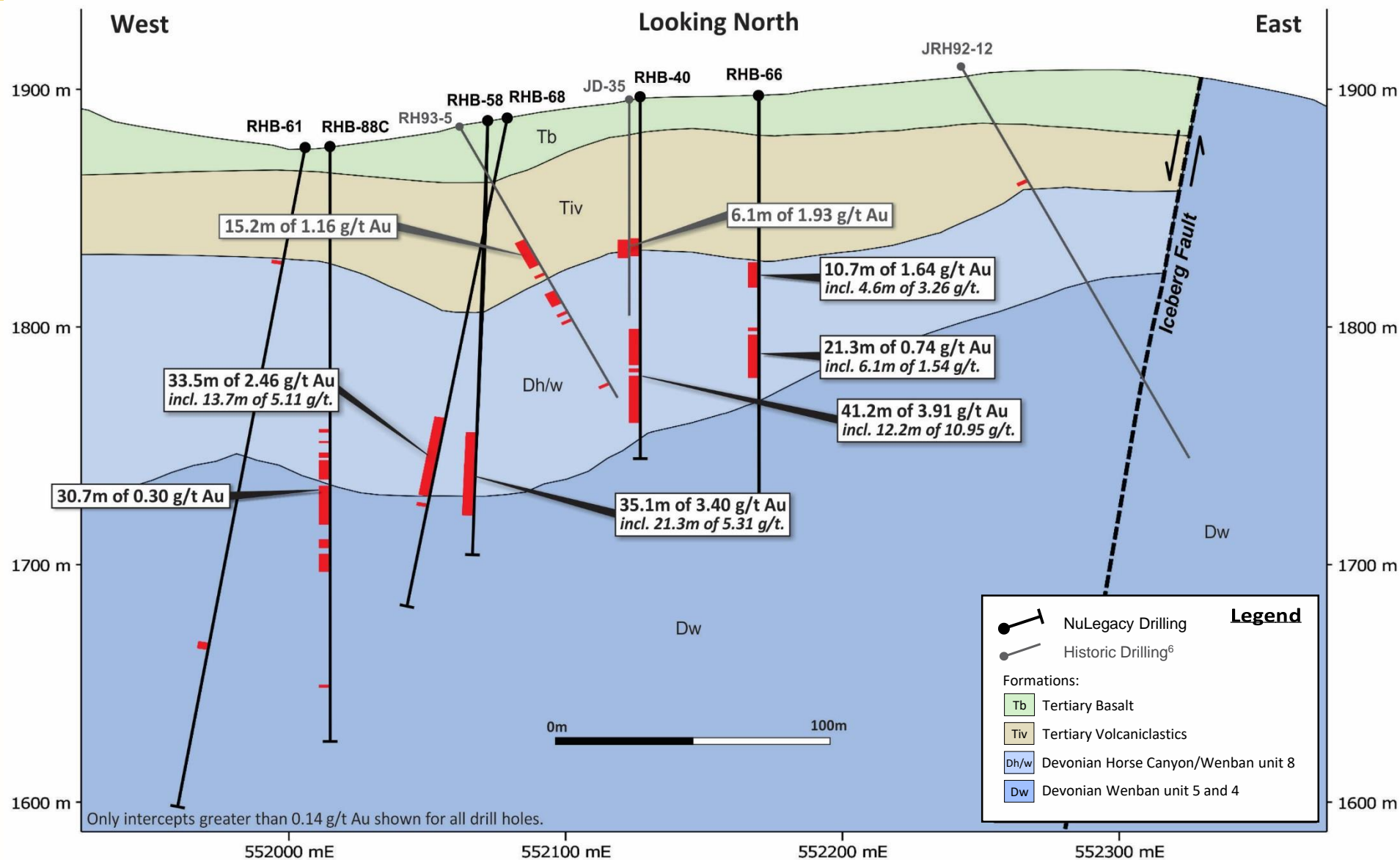
Cross-section (slide 14)

North Iceberg

North Iceberg



# Iceberg north zone - cross-section



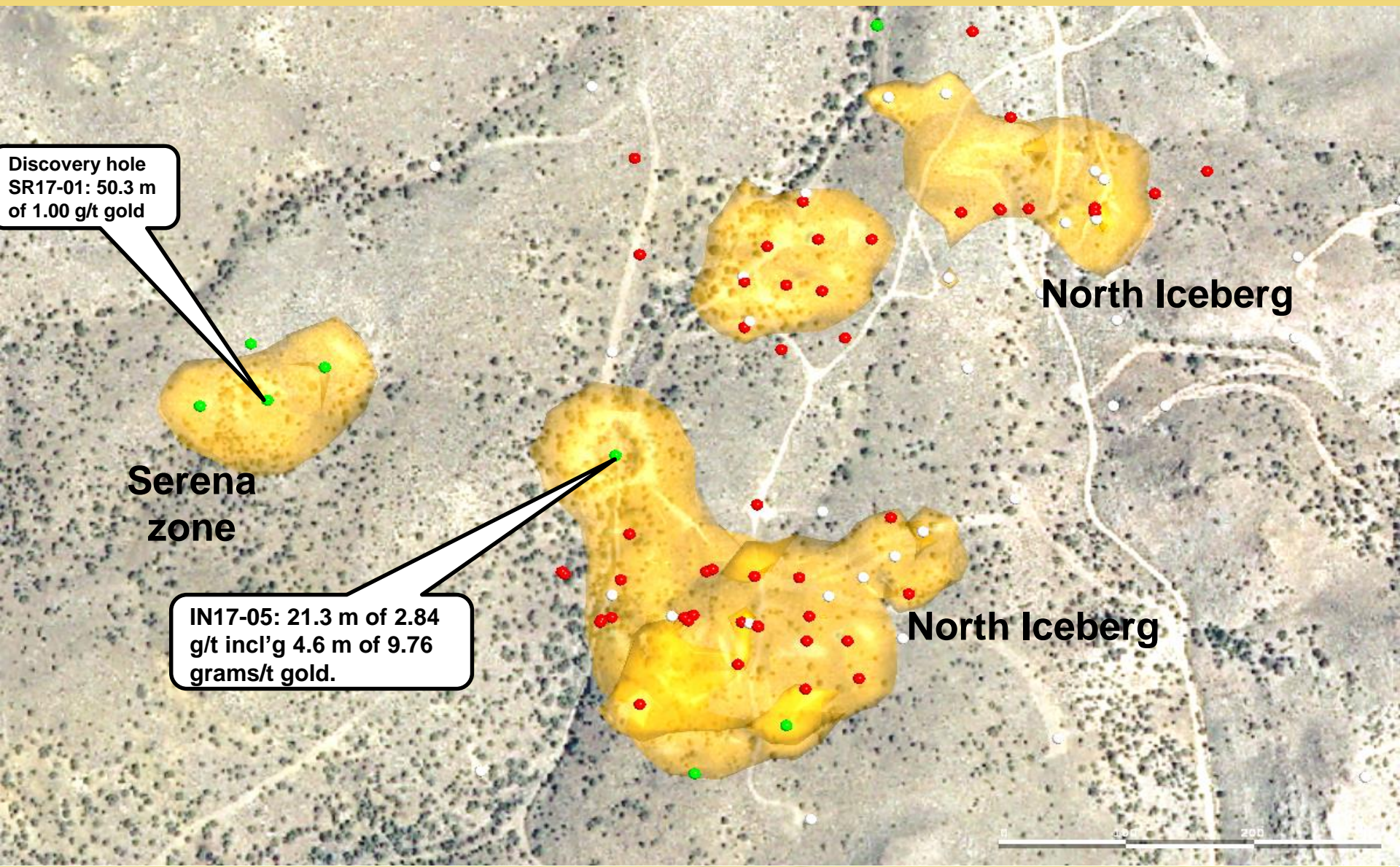


## North Zone – oxidized mineralization

Selected multi-meter multi-gram intercepts greater than 1.0 gram<sup>5</sup>

Hole	Intercept (m)		Thickness	Grade
number	From	To	(m)	(g/t)
RHB-17	71.6	112.8	41.2	1.02
<i>including</i>	88.4	99.1	10.7	3.46
RHB-35	77.7	109.7	32.0	1.23
<i>including</i>	86.9	97.6	10.7	3.23
RHB-40	97.6	138.8	41.2	3.91
<i>including</i>	121.8	126.4	4.6	25.21
RHB-49	38.1	109.7	71.6	0.78
<i>including</i>	45.8	54.9	9.1	2.19
RHB-58	131.1	166.2	35.1	3.41
<i>including</i>	141.7	149.4	7.6	7.30
RHB-64	68.6	120.4	51.8	1.26
<i>including</i>	80.8	91.5	10.7	4.46
RHB-68	128.1	161.6	33.5	2.46
<i>including</i>	137.2	150.9	13.7	5.11
RHB-82	54.9	76.2	21.3	2.16
<i>including</i>	61.0	65.6	4.6	6.09

# North & Serena zone: connecting the dots



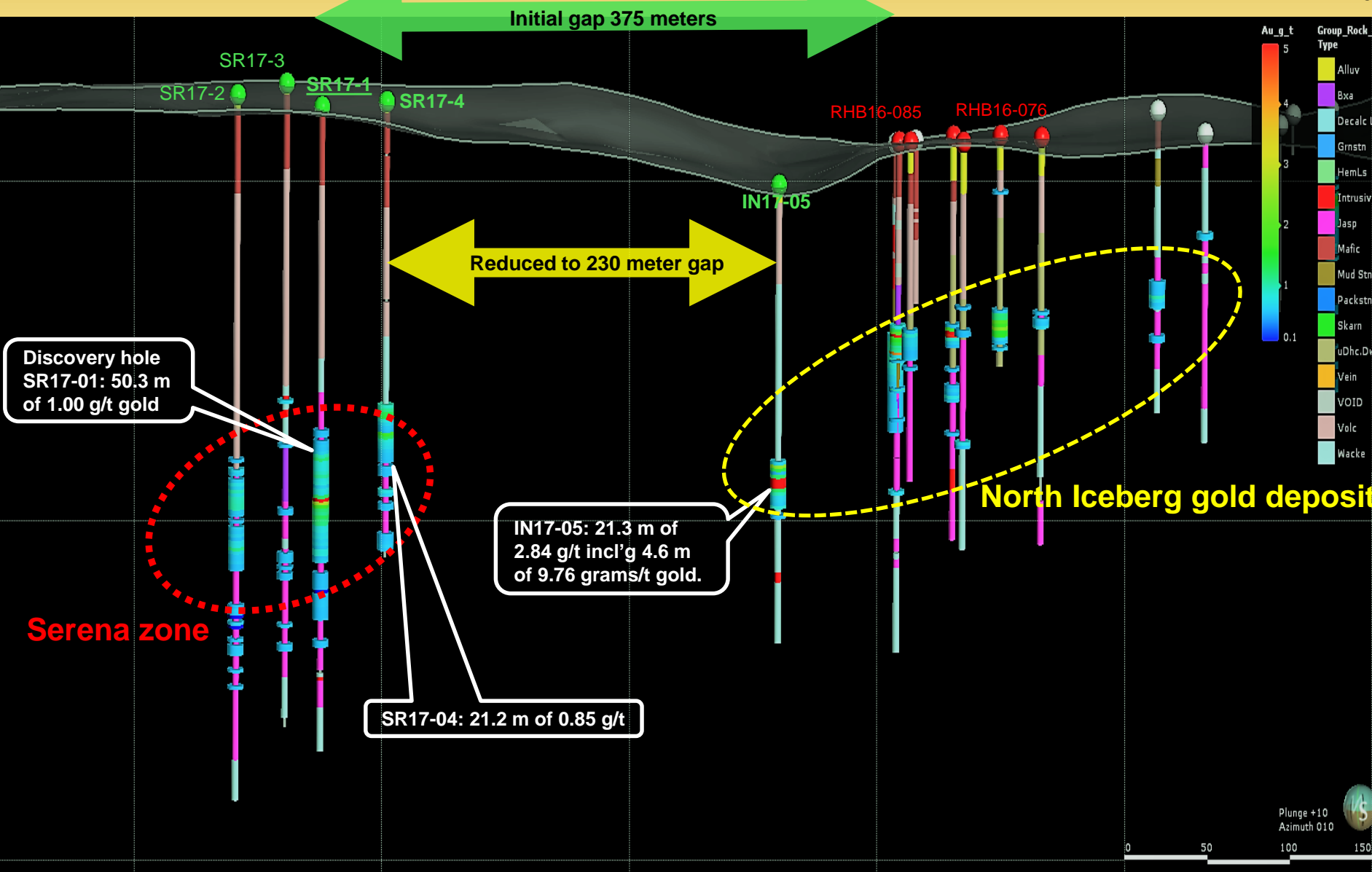


## 2017 - Serena Zone mineralization

### Selected multi-meter multi-gram intercepts<sup>6</sup>

Hole	Intercept (m)		Thickness	Grade
number	From	To	(m)	(g/t)
<b>IN17-05</b>	<b>123.4</b>	<b>144.8</b>	<b>21.3</b>	<b>2.85</b>
<i>including</i>	<b>131.1</b>	<b>135.7</b>	<b>4.6</b>	<b>9.67</b>
<b>SR17-01</b>	<b>144.8</b>	<b>230.1</b>	<b>50.3</b>	<b>1.00</b>
<i>including</i>	<b>173.7</b>	<b>187.5</b>	<b>13.7</b>	<b>2.27</b>
<b>SR17-02</b>	<b>173.8</b>	<b>186.0</b>	<b>12.2</b>	<b>0.67</b>
<i>and</i>	<b>199.7</b>	<b>205.8</b>	<b>6.1</b>	<b>0.60</b>
<b>SR17-04</b>	<b>135.7</b>	<b>157.0</b>	<b>21.3</b>	<b>0.85</b>

# Convergence: North Iceberg and Serena zone





# Drilling the Serena zone



**New Serena zone:  
Discovery hole: 50.3 meters  
of 1.00 g/t gold**

**Barrick's Gold Rush  
~10.0M oz. of gold  
@10.2 g/t<sup>4</sup>**



**North Iceberg gold deposit**





# Drilling VIO17-1

*NuLegacy Gold*  
Corporation

20



NUG:V | NULGF:QX

*Discovering gold in the Cortez Trend, Nevada*

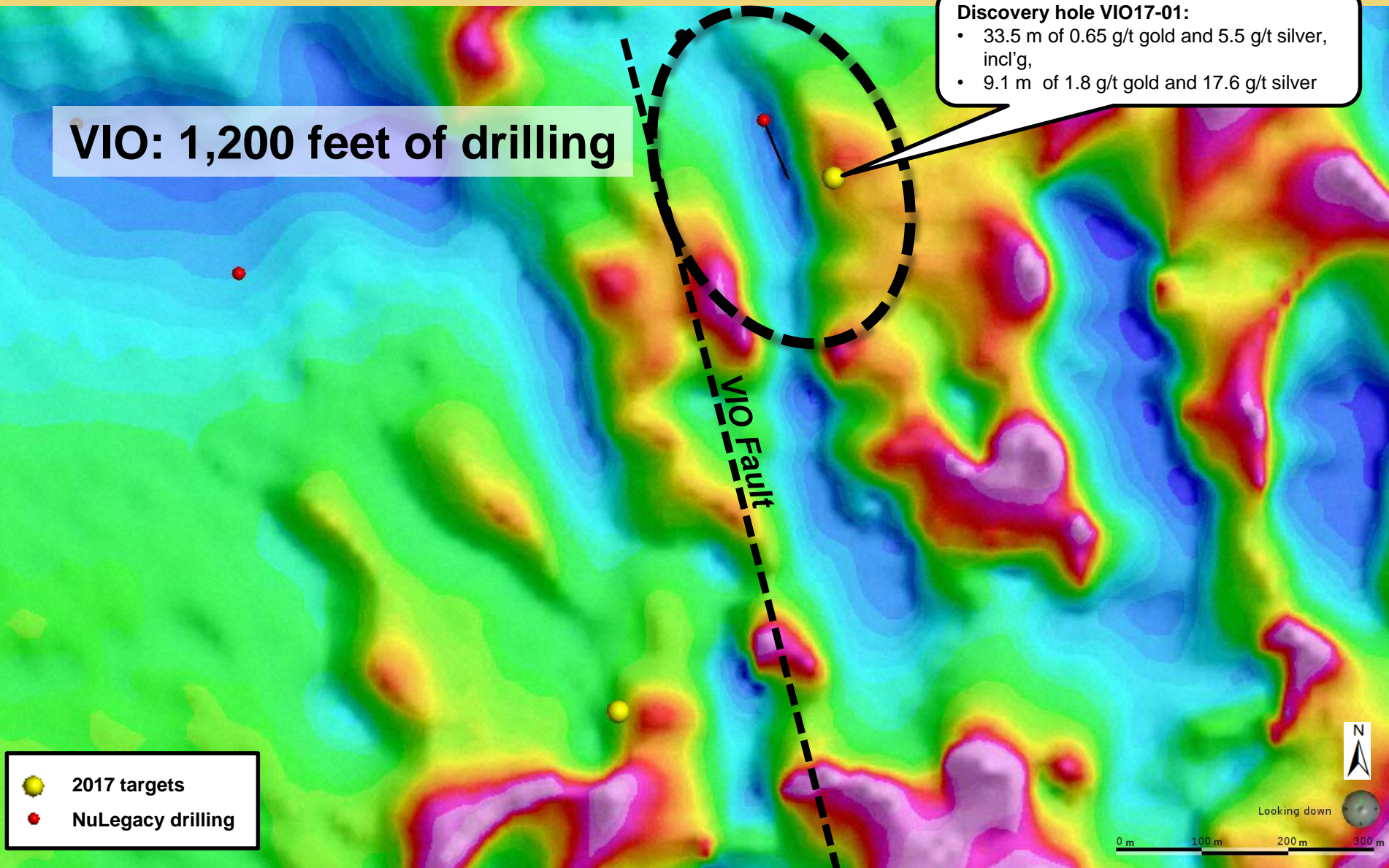


# VIO targeting: Magnetics

VIO: 1,200 feet of drilling

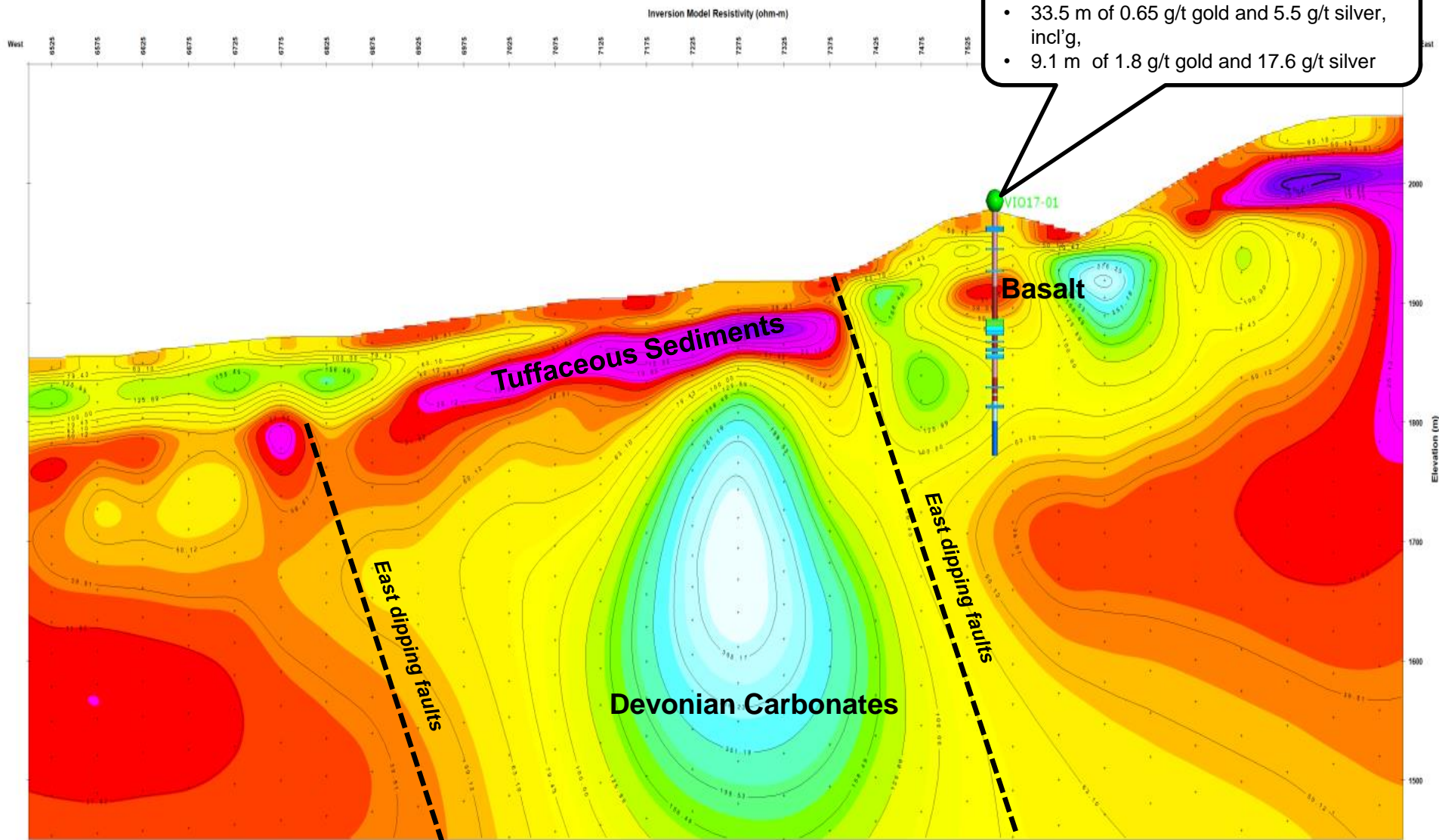
**Discovery hole VIO17-01:**

- 33.5 m of 0.65 g/t gold and 5.5 g/t silver, incl'g,
- 9.1 m of 1.8 g/t gold and 17.6 g/t silver

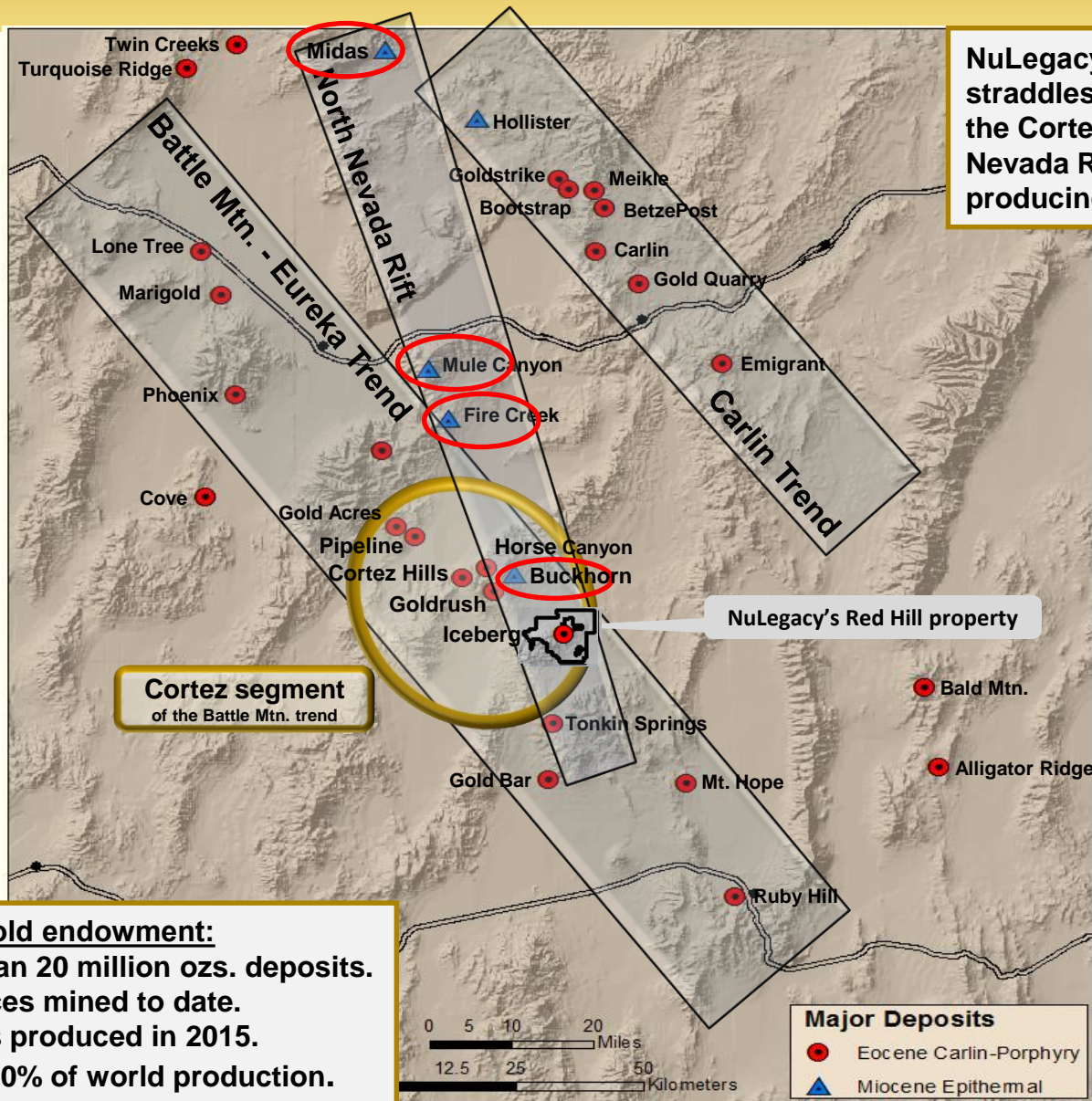




# VIO targeting: CSAMT cross-section



# Epithermal mines in the North Nevada Rift



NuLegacy's Red Hill property straddles the convergence of the Cortez trend and the North Nevada Rift – two proven gold producing structures.

NB. Bootstrap, BetzePost, Meikle, West Leeville and Genesis are now referred to as Goldstrike, just as the Pediment, Horse Canyon, ET Blue and Goldrush are referred to as Goldrush.





***Roger Steininger, PhD - Geoscience & Property Evaluation***

Chief Geoscience Officer, Dir, co-founder NuLegacy Gold - discovered 21+ million ozs Pipeline mine\*, Iceberg and Avocado gold deposits.

***Alex Davidson, BSc Ec Geo. - Development & Acquisitions***

Independent Dir. – co-discovered the 8.5+ million ozs Llaganas Norte mine\*.

***Edward L. Cope, MSc Ec Geo. - Planning and Execution***

Independent Dir. – led team that added ~ 50 million ounces to Barrick's Nevada gold endowment.

***Derick Unger, MSc Geo. - Exploration Targeting***

Chief Geologist, Geo-physics.

***William Mounts, DICAT***

***Garrett Frey, BSc***

***Bryan Kellie, BSc***

***Denise Dowell, BSc***

***Emily Sudholt, BSc***

***Robert Springs, BSc***

Drilling Supervisor

Senior Geologist.

Project Geologist.

Geo-tech Administrator

Geologist

Geologist



***John Katseanes, BSc***

Geo-technical database architect consultant

***“....\*three of NuLegacy's geo-team were instrumental in the discovery of three of Barrick Gold's best performing gold mines...”***

## ***Albert Matter - Strategy & Finance***

Exec. Chairman, Dir. - co-founder Alamos Gold Inc. and NuLegacy Gold Corporation.

## ***James Anderson - Marketing & Value recognition***

CEO, Dir. - co-founder Alamos Gold Inc. and NuLegacy Gold Corporation.

## ***Danny Lee - Administration & Controllershship***

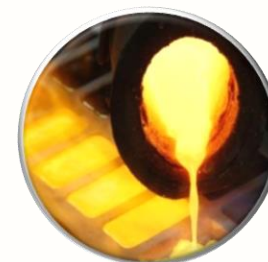
VP Admin & CFO - managed Eagle Hill & Oban (four party) merger.

## **Independent Directors:**

- ***Alex Davidson*** Dir, Yamana Gold Inc.- former EVP Barrick Gold.
- ***Alan Hill*** Chair, Teranga Gold Corporation – former EVP Barrick Gold.
- ***Edward Cope*** Retired VP Exploration, North America Barrick Gold.

## **Advisory Council:**

- ***Glen Darou*** Retired CFO, Shell Canada.
- ***John Budreski*** Pres. & CEO, Morien Res.
- ***Stuart Angus*** Chair, Nevsun Resources.



***“... with a track record of successfully securing and advancing high-quality assets...”***



# Why buy NuLegacy Gold?

- ✓ **Location:** 98 sq. kms (38 sq. miles) in Nevada's Cortez trend – one of the best places on the planet to find a gold deposit.
- ✓ **Grade:** Established near surface exploration target ~ 90-110 million tonnes Iceberg oxide gold deposit grading 0.7 to 1.0+ grams of gold/t<sup>i</sup>.
- ✓ **Prospects:** ~ 10 sq. km of gold mineralization including the Avocado, Deep Iceberg, Western Slopes, Serena and VIO zones identified to date.
- ✓ **Treasury:** Strong treasury and shareholders supportive of aggressive drilling programs.
- ✓ **People:** Highly successful gold discovery and corporate development team.

***Building shareholder value in Nevada.***



<sup>i</sup> Exploration target figures are



Goldrush



1. These figures are conceptual in nature and derived from a compilation of 149 historic and 34 NuLegacy drill holes in and around the Iceberg deposit. To date, there has been insufficient exploration to define a mineral resource and it is uncertain if further exploration will result in the target being delineated as a mineral resource. No preliminary economic assessment or other study has been completed and geologically it is too speculative to apply economic considerations to the Iceberg deposit at this time.
2. This information has been derived from publicly available sources which are believed to be accurate. However, NuLegacy has not undertaken any independent investigations to verify or establish this information and readers are cautioned not to place undue reliance thereon.
3. As reported by Barrick Gold Corporation, the revised and updated Goldrush resource with an underground production scenario is significantly higher grade than the previously reported open pit resource. It contains 8,557,000 indicated ounces of gold within 25.78 million tonnes grading ~10.57 g/t and 1,650,000 inferred ounces within 5.6 million tonnes grading ~9.0 g/t.
4. The presence of gold resources on properties adjacent to or in close proximity with the Company's Iceberg and Avocado deposits is not necessarily indicative of the gold mineralization on the Iceberg or Avocado deposits. To date, there are no known NI 43-101 compliant mineral resources or reserves on the Iceberg or Avocado deposits.
5. The reported gold intervals may or may not represent true thicknesses and/or widths as there is insufficient data at this time with respect to the shape of mineralization to calculate its true orientation. All drilling was conducted by NuLegacy's drilling contractors under the supervision of the Company's project geologist and the chain of custody from project to sample preparation facility was continuously monitored. The samples were analyzed by American Assay Labs of Sparks, NV and sufficient commercially prepared standards, blanks, and duplicates were inserted to assure quality analytical results. Data verification of the analytical results included a statistical analysis of the duplicates, standards and blanks to ensure accurate and verifiable results.
6. Historic holes are not confirmed and should not be relied upon; they are presented to provide an indication of the possible mineralization in the Iceberg and a guide to future exploration.



# North and Central zone stratigraphy

## North Zone

## Gold Occurrence

## Central Zone

Miocene Basalt Cap

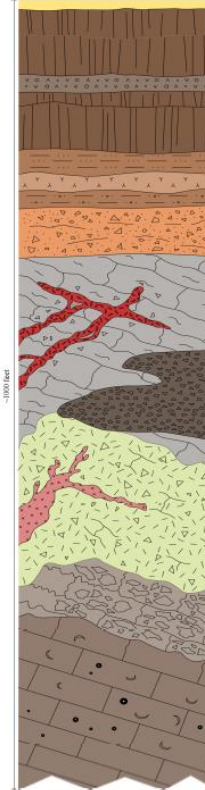
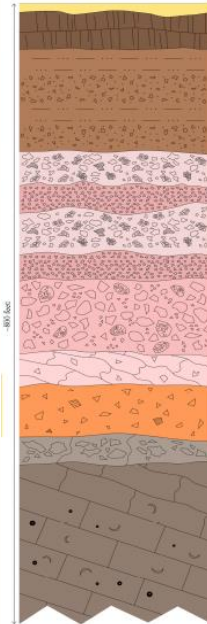
Tuffaceous Sediments

Alternating Limestone Breccias  
and Silicified Breccias

Upper Wenban Limestone  
Breccias

Jasperoid Breccia

Fossiliferous Limestone



Miocene Basalt Cap

Bimodal Volcanics

Eocene (?) Tuffaceous Sediments  
-Including the Heterolithic Breccia

Altered Devonian Limestone

-Including Jasperoid Breccias

-And Hypabyssal Intrusive

Calc-silicate Skarn & Intrusive

Fossiliferous Limestone

***Higher Grade  
Nearer to Surface  
Two Distinct Gold Horizons  
No gold in the volcanics***

***Thicker and deeper  
mineralization  
Multiple gold horizons  
Gold in the volcanic and  
carbonates***

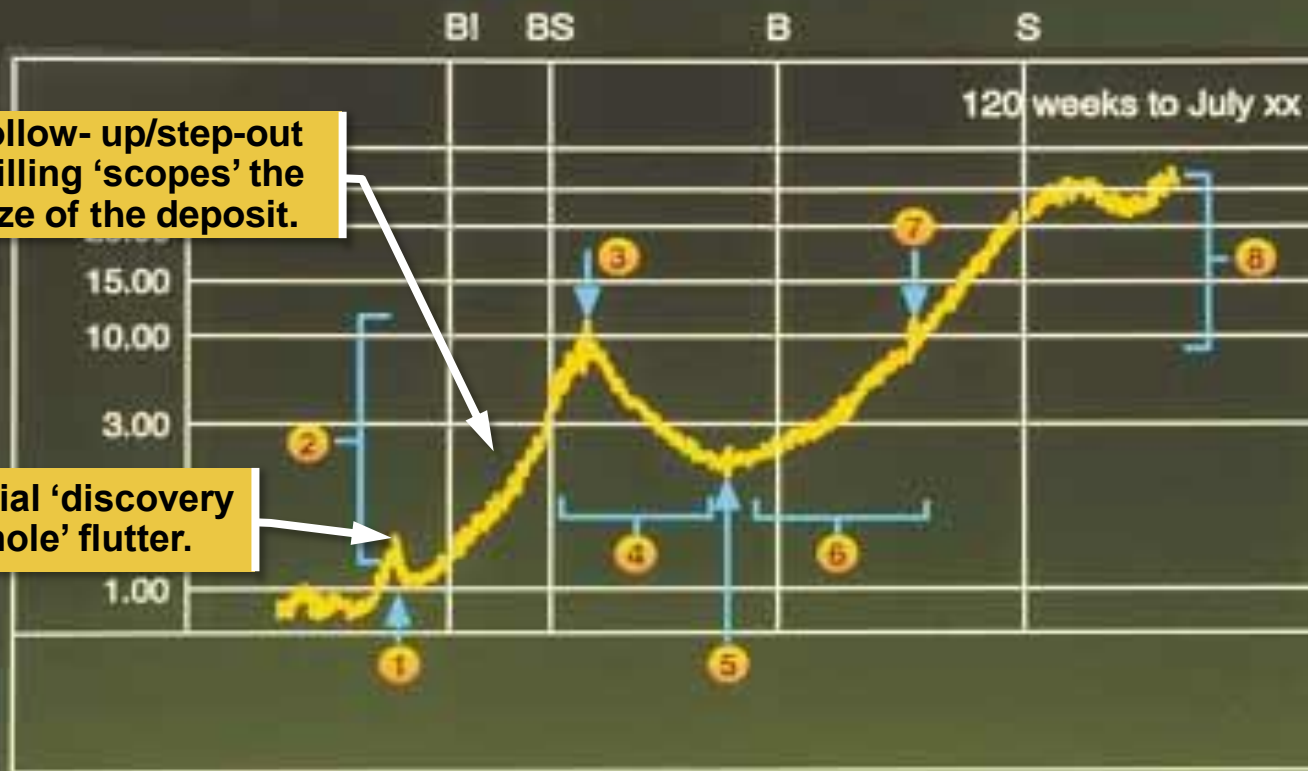


# Classic junior exploration share price cycle\*

## MODEL OF CLASSIC MINING COMPANY SHARE PRICE CYCLE Discovery to Production

Follow- up/step-out  
drilling 'scopes' the  
size of the deposit.

Initial 'discovery  
hole' flutter.



1. Discovery hole
2. Anticipatory/  
discovery high
3. Discovery high
4. Confirmation/  
disinterest slide
5. Disinterest low
6. Development/  
construction  
period
7. Production  
start-up
8. Production/cash  
flow period

\*Originally authored and published by Albert J. Matter in 1979 with the help of Norman B. Keevil Sr., founder of Teck Corporation; republished by The Oxford Club, September 1995.

## Corporate

Albert Matter, Exec. Chairman

[albert@nuggold.com](mailto:albert@nuggold.com)

James Anderson, CEO

[james@nuggold.com](mailto:james@nuggold.com)

Danny Lee, CFO

[danny@nuggold.com](mailto:danny@nuggold.com)

Frank Lagiglia, Investor Comm.

[frank@nuggold.com](mailto:frank@nuggold.com)

Susan Tessman, Corporate Admin.

[susan@nuggold.com](mailto:susan@nuggold.com)

## Exploration

Roger Steininger, CGO

[roger@nuggold.com](mailto:roger@nuggold.com)

Derick Unger, Chief Geologist

[derick@nuggold.com](mailto:derick@nuggold.com)

William Mounts, Drill Supervisor

[bill@nuggold.com](mailto:bill@nuggold.com)

Garrett Frey, Project Geologist

[garrett@nuggold.com](mailto:garrett@nuggold.com)

Bryan Kellie, Project Geologist

[bryan@nuggold.com](mailto:bryan@nuggold.com)

Denise Dowell, Geo-tech Administrator

[denise@nuggold.com](mailto:denise@nuggold.com)

John Katseanes, Geo-tech Dbase

[jkats.geo@gmail.com](mailto:jkats.geo@gmail.com)

Emily Sudholt, Geologist

[emily@nuggold.com](mailto:emily@nuggold.com)

JoAnn Newbury, Nevada Liaison

[joann@nuggold.com](mailto:joann@nuggold.com)

## Operations Office:

5450 Riggins Court  
Suite 1B  
Reno, Nevada  
89502  
Ph: 775-825-0494

## Finance & Admin Office:

1055 West Hastings St. Suite 300  
Vancouver, BC.  
V6E-2E9  
Ph: 604-639-3640

**Fax: 604-909-1710**

[www.nulegacygold.com](http://www.nulegacygold.com)