

Premier Gold Mines Limited

PREMIER

TSX

Asia / Pacific Indices

Index	Last	Change
Nikkei 225	17,282.32	-114.66
Hang Seng	20,679.69	24.49
All Ordinaries	6,876.90	23.40
Taiwan Wt	6,786.76	-2.67
KLSE	1,243.67	6.94
Straits Time	3,236.60	13.38

North American Indices

Index	Last	Change
DJA	12,868.31	0.00
Nasdaq Comp	2,471.50	0.00
S&P/TSX Comp	13,183.33	0.00
American Exch	2,168.88	0.00
Nasdaq Cdn	647.42	0.00
Mexico IPC	28,947.45	0.00

TECHNOLOGY

BILLING TRUST (POJH) 26.45 ▲ 0.00

PEYTO ENERGY TRUST (PEYM) 6 @ 12.30 ▲ 0.00

A World of Opportunity



This Presentation contains certain information that may constitute "forward-looking information" under applicable Canadian securities legislation. Forward-looking information includes, but is not limited to, statements regarding the Company's achievement of the full-year projections for ounce production, production costs, AISC costs per ounce, cash cost per ounce and realized gold price per ounce, the Company's ability to meet annual operations estimates, and statements about strategic plans, including future operations, future work programs, capital expenditures, discovery and production of minerals, price of gold and currency exchange rates, timing of geological reports and corporate and technical objectives. Forward-looking information is necessarily based upon a number of assumptions that, while considered reasonable, are subject to known and unknown risks, uncertainties, and other factors which may cause the actual results and future events to differ materially from those expressed or implied by such forward-looking information, including the risks inherent to the mining industry, adverse economic and market developments and the risks identified in Premier's annual information form under the heading "Risk Factors". There can be no assurance that such information will prove to be accurate, as actual results and future events could differ materially from those anticipated in such information. Accordingly, readers should not place undue reliance on forward-looking information. All forward-looking information contained in this press release is given as of the date hereof and is based upon the opinions and estimates of management and information available to management as at the date hereof. Premier disclaims any intention or obligation to update or revise any forward-looking information, whether as a result of new information, future events or otherwise, except as required by law.

This presentation has been completed by Premier. Certain corporate projects referred to herein are subject to agreements with third parties who have not prepared, reviewed nor approved this presentation. The presentation is not intended to reflect the actual plans or exploration and development programs contemplated for such projects.

Please refer to Appendix A-2 for cautionary notes on Non IFRS measures and production guidance.

This presentation should be read together with the interim financial statements of the Company for the second quarter ended June 30, 2017 together with the related Management's Discussion and Analysis.

Foreign Exchange Assumptions

The Company's formal reporting currency is CA\$ however for convenience to the reader, US\$ are also provided for several key highlights. Exchange rates used are sourced from The Bank of Canada, <http://www.bankofcanada.ca/rates/exchange/>. The balance sheet closing rate at June 30, 2017 was \$1.2977 and the income statement year to date weighted average closing rate used at June 30, 2017 was \$1.3343.

Cautionary Notes to Investors - Reserve and Resource Estimates

In accordance with applicable Canadian securities regulatory requirements, all mineral reserve and mineral resource estimates of the Company disclosed in this presentation have been prepared in accordance with Canadian National Instrument 43-101 - Standards of Disclosure for Mineral Projects ("NI 43-101"), classified in accordance with Canadian Institute of Mining Metallurgy and Petroleum's "CIM Standards on Mineral Resources and Reserves Definitions and Guidelines" (the "CIM Guidelines").

Pursuant to the CIM Guidelines, mineral resources have a higher degree of uncertainty than mineral reserves as to their existence as well as their economic and legal feasibility. Inferred mineral resources, when compared with measured or indicated mineral resources, have the least certainty as to their existence, and it cannot be assumed that all or any part of an inferred mineral resource will be upgraded to an indicated or measured mineral resource as a result of continued exploration. Pursuant to NI 43-101, inferred mineral resources may not form the basis of any economic analysis, including any feasibility study. Accordingly, readers are cautioned not to assume that all or any part of a mineral resource exists, will ever be converted into a mineral Reserve, or is or will ever be economically or legally mineable or recovered. Premier is not aware of any environmental, permitting, legal, title-related, taxation, socio-political, marketing or other relevant issue that could materially affect the Mineral Resource estimate.

Stephen McGibbon, P. Geo., (Executive VP Corporate and Project Development) is the Qualified Person for the information contained in this presentation and is a Qualified Person within the meaning of National Instrument 43-101.

For further information on the technical data provided in this presentation, including the key assumptions underlying the mineral resource herein, refer to the Sedar filings as listed below:

Note	Project/Property Tech Report	Company	Date
(1)	Hasaga	Premier Gold Mines Limited	December 30, 2016
(2)	Hardrock Feasibility	Premier Gold Mines Limited	December 21, 2016
(3)	McCoy-Cove	Premier Gold Mines Limited	April 15, 2017
(4)	South Arturo	Premier Gold Mines Limited	July 15, 2015
(5)	Mercedes	Premier Gold Mines Limited	September 29, 2016

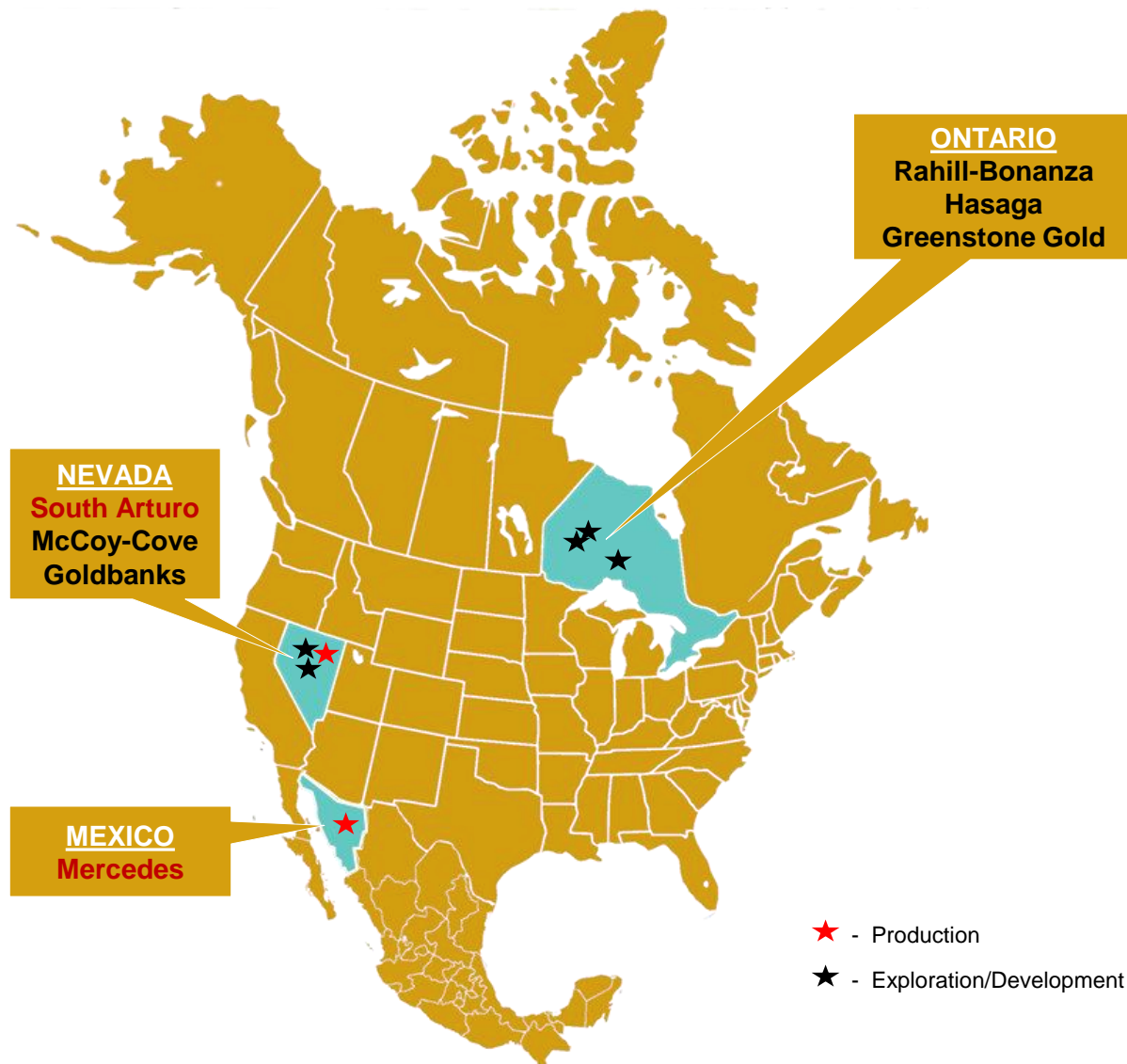
Growing A Mining Business

Unparalleled growth, low-cost production and sustained exploration reduces risk.

Premier focuses on:

- PROVEN MANAGEMENT
- WORLD-CLASS DISTRICTS
- SAFE JURISDICTIONS
- SENSIBLE PARTNERSHIPS

- Low-cost production:
 - 2 mines in North America
- 4 Advanced-stage projects:
 - El Nino, Nevada
 - P1&3 Pits, Nevada
 - McCoy-Cove, Nevada
 - Hardrock, Ontario
- Exploration upside
- Financial strength:
 - Q2 cash & equivalents of CA\$156.8M
 - 2017 ext. AISC US\$660-690 / oz Au



2017 Production Guidance

- 2017 Production & Cost Guidance Updated:
 - 130,000 – 140,000 ozs of gold
 - 340,000 – 365,000 ozs of silver
 - AISC US\$660 – US\$690 / oz Au

Operational Highlights – Q2-2017

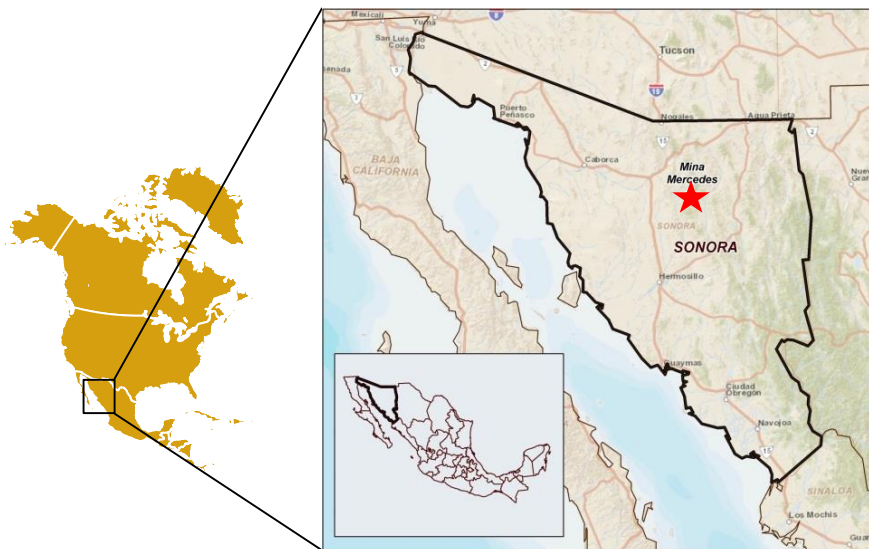
- Consolidated production of 37,617 ounces gold and 89,474 ounces silver
- Consolidated co-product cash costs of US\$481 per ounce gold sold and US\$9.67 per ounce silver sold ⁽ⁱ⁾
- Consolidated co-product all-in sustaining costs of US\$607 per ounce gold sold and US\$11.64 per ounce silver sold ⁽ⁱ⁾
- Cash & cash equivalents CA\$156.8M (US\$120.9M)
- Cash flow from operations of CA\$17.8M (US\$13.4M) and Free cash flow of CA\$10.1 million (US\$7.5 million) or CA\$.05/share (US\$.04/share)
- Net income of CA\$14.6M (US\$10.9M)
- Exploration and pre-development expenses of CA\$10.7M (US\$8.0M)
- Capital expenditures of CA\$7.1 million (US\$5.5 million)

⁽ⁱ⁾ A cautionary note and further information regarding Non-IFRS financial metrics is included in the “Non-IFRS Measures” section of the Q2-2017 Management’s Discussion and Analysis

Overview

- Commenced production in 2011
- Currently mining 7 zones underground from 5 portals
- Acquired by Premier on September 30, 2016
- +75,000 Hectares in Sonora State, Mexico
- Both production and costs beat budget for the quarter
- ~50,000 metres of drilling planned for 2017

Located in a Prolific Mining District

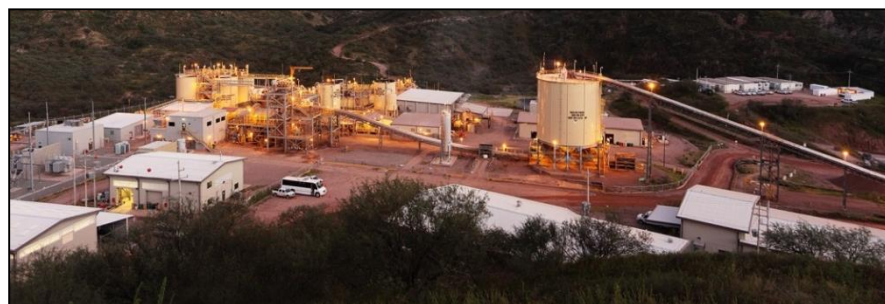


Key Metrics

Mine Ownership	Premier Gold 100%
Mine Type	Underground
Plant Throughput Capacity	2,000 tpd
2017E Production	85-90 koz Au
2017E Cash Cost	US\$680-710 / oz Au
2017E AISC	US\$810-840 / oz Au

Q2-2017 Highlights

- Completed drift to access Diluvio deposit expected to result in increased mill throughput (~2,000 tpd)
- 9 drills now active for definition and resource/reserve replacement
- Average mill throughput 1,954 tonnes per day in Q2
- **Production: 21,893 oz Au – 89,474 oz Ag**
- **Cash Costs US\$577/oz Au – AISC US\$707/oz Au**



Focus on Reserve Growth and Quality Production

Resources have been identified in four main zones:

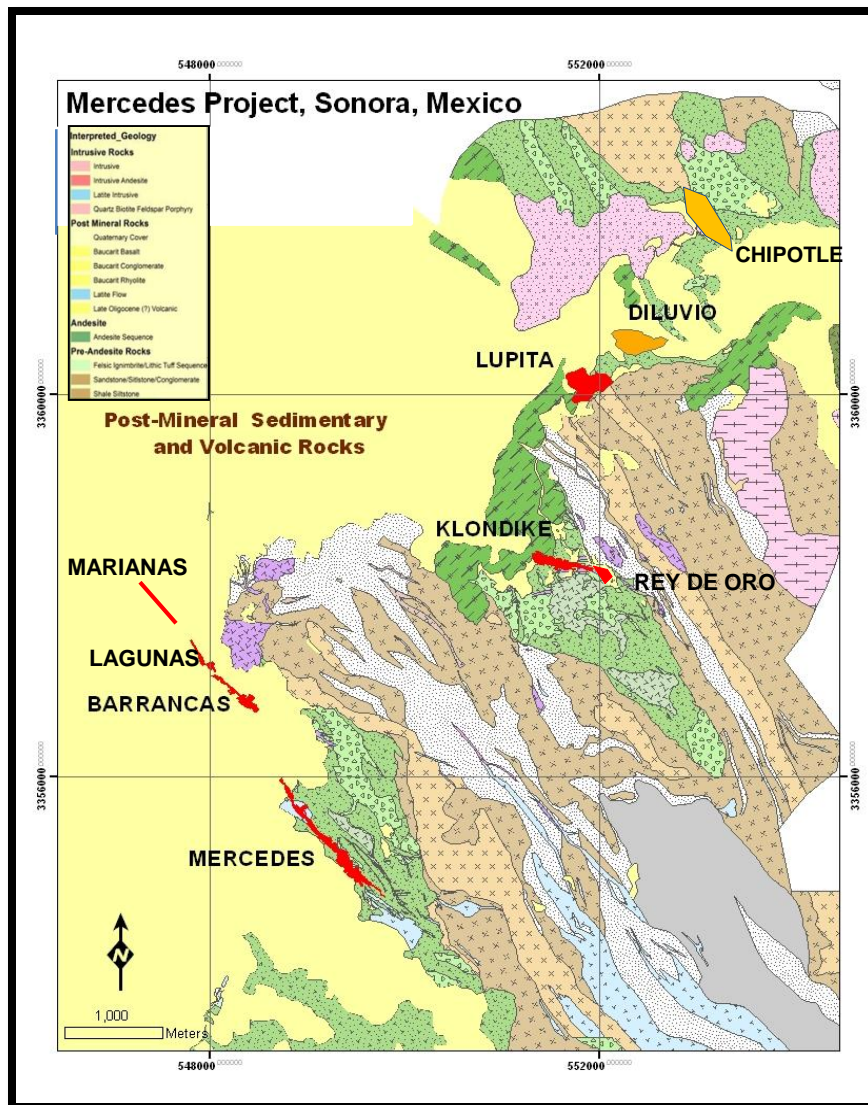
1. Mercedes (Corona de Oro)
2. Barrancas-Lagunas (Future access to Marianas)
3. Klondike - Rey De Oro (RDO drift +50% complete)
4. Lupita-Diluvio (Diluvio drift completed Q1/17)

Exploration Opportunity

- District-wide exploration target studies completed in 2015 have identified ~45 km of untested structures
 - Limited drilling has been completed outside of existing resource areas
 - District has excellent potential to host additional vein systems

2017 Exploration & Development Programs

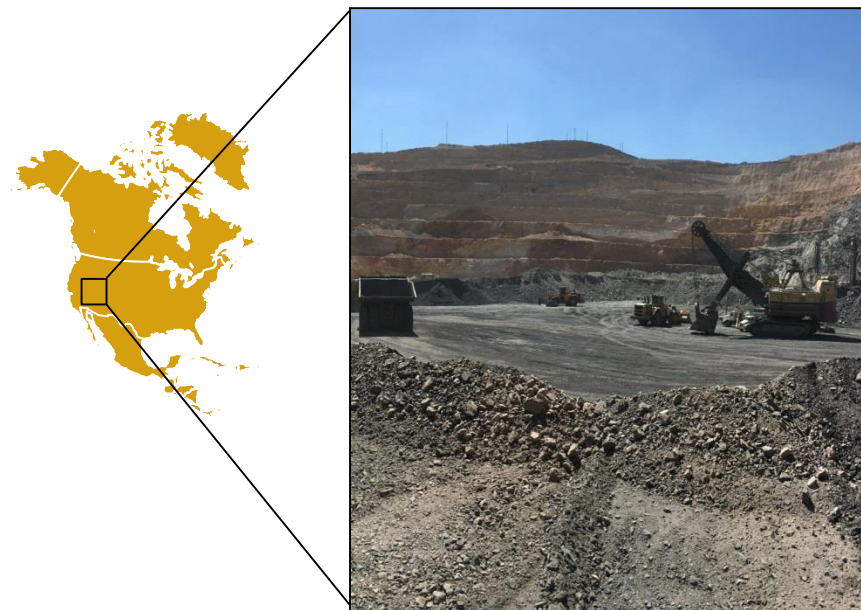
- 50,000-metres of definition and expansion drilling planned to test several primary target areas
- Advance development of the new Diluvio deposit
- Continued focus on dilution & cost reduction, increasing reserves and plant throughput
- Year end reserve and resource update planned



Overview

- Purchased from Goldcorp in 2015 and brought into production in 2016
- Phase 2 pit operated by Barrick as a satellite deposit to the Goldstrike Mine complex
- Mining of Phase 2 now completed with processing of ore continuing throughout the year
- Total production has exceeded plan owing to higher grades mined vs model

Located in the Heart of the Carlin Trend



Key Metrics

Mine Ownership		Premier Gold 40%
		Barrick Gold 60%
Mine Type		Open Pit
Processing		Roaster (Goldstrike)
2017E Production		45-50 koz Au (~+10k oz in stockpile)
2017E Cash Cost		US\$440-470 / oz Au
2017E AISC		US\$450-480 / oz Au

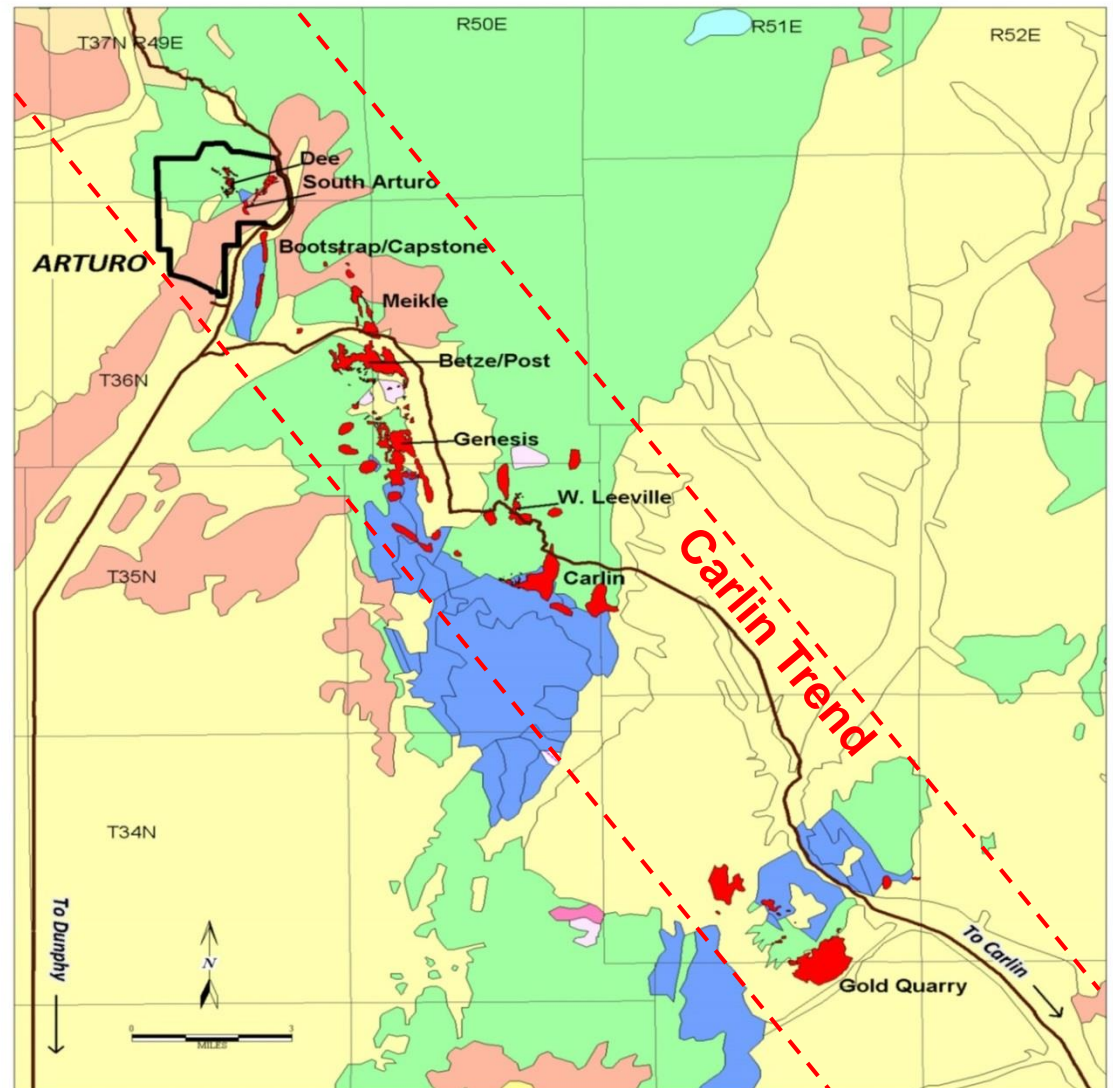
Q2-2017 Highlights

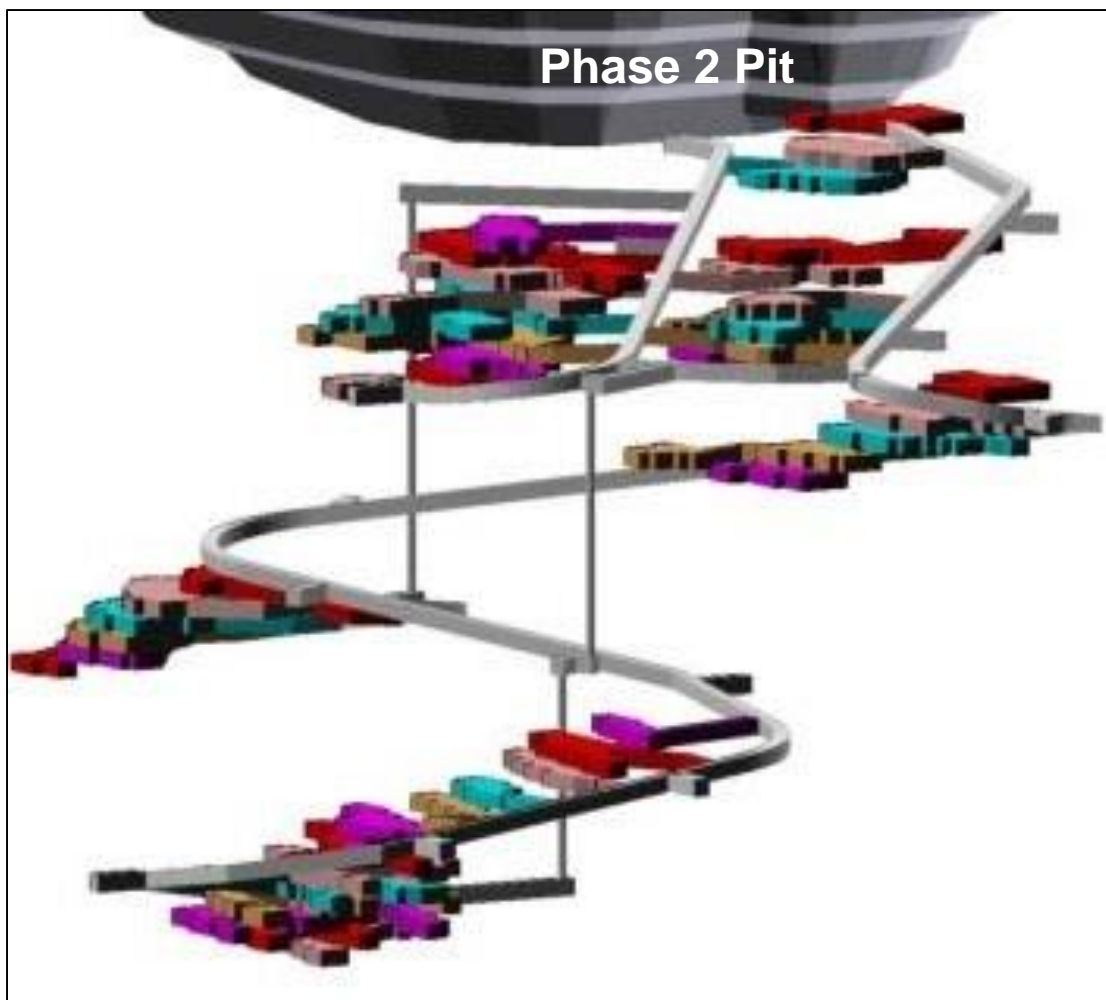
- Processing ore exclusively through the Goldstrike roaster has resulted in lower costs and higher recoveries
- Currently supporting permitting to advance the El Nino underground mine opportunity (below current pit)
- Advancing the economics for additional (permitted) open pit deposits on the property – **Phase 1 pit added to draft plan and submitted for corporate approval**
- Testing new exploration targets in 2017
- **Production: 15,724 oz Au**
- **Cash Costs US\$332 / oz Au – AISC US\$451 / oz Au**

Strategic Project on the Carlin Trend

World-Class Gold District

- Core land position in one of the most sought after gold districts in the world
- South Arturo pit is one of the lowest cost operations in the world with H1 2017 AISC of US\$322/oz
- Several upside opportunities:
 - El Nino u/g Deposit
 - Phases 1&3 Pits
 - East Dee u/g Deposit
 - Exploration Targets
- Partnership with Barrick could provide potential future strategic opportunities

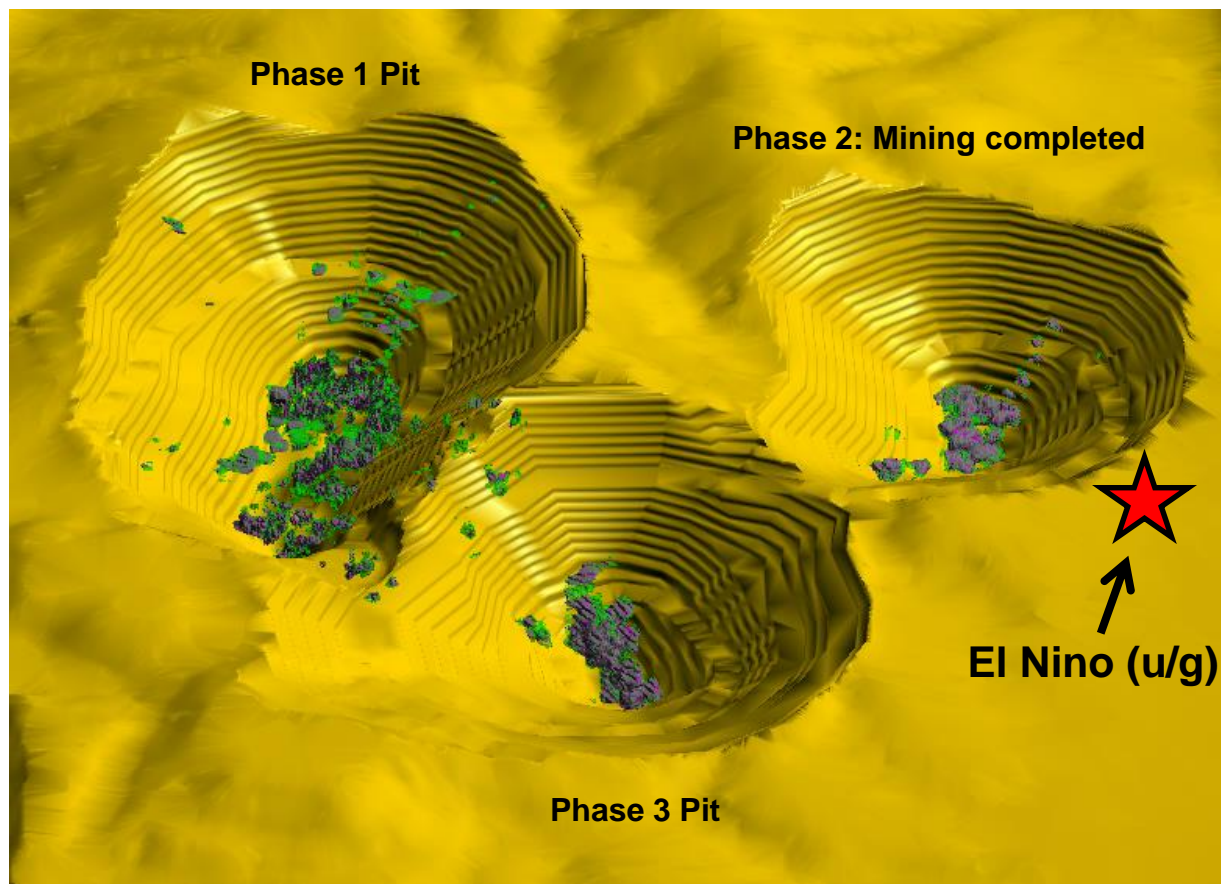


Near-Term Development Potential - El Nino Deposit**Exploration and Development Plans**

- High grade underground opportunity situated immediately down-plunge of the Arturo pit
- Permits for underground mine development submitted in 2016
- Potential for resource estimates following the 2017/18 exploration programs.
- Highlight previous drill results:
 - 0.27 oz/t Au across 60.0 ft (BD15-031)
 - 0.75 oz/t Au across 90.0 ft (BD15-051)
 - 0.22 oz/t Au across 148.0 ft (BD15-053)
 - 0.23 oz/t Au across 55.0 ft (BD15-054)
- Additional exploration targets to be tested in 2017

Phases 1,2 & 3 with Proposed Pit ShellsAssessing Development Opportunities

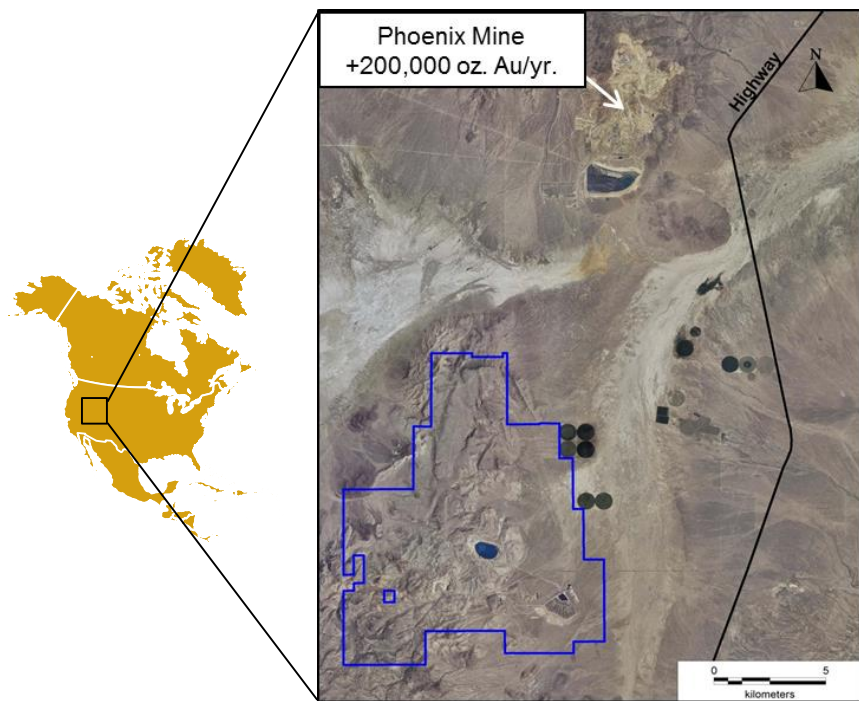
- Additional Phases of Arturo utilizing existing mine equipment
- **Mining and process facilities are permitted**
- Under evaluation
 - Leach pad feasibility
 - Project economic analysis
 - Gold/Silver Recoveries
 - Mining costs
 - In-pit backfill (backfilling not permitted)
- The Phase 1 open pit development has been advanced into the draft mine plan for detailed review



Overview

- Located in the Battle Mountain Trend, Nevada
- Large underexplored land package of ~31,000 acres
- Past production: 3.3 M oz Au and 110.0 M oz Ag
- Existing Plan of Operations could allow for near-term underground development and advanced exploration
- Permitting underway for Advanced-Exploration

Located in the Heart of the Battle Mountain Trend



(1) See note 5 on disclaimer page

McCOY-COVE PROPERTY, NEVADA

Key Metrics

Ownership	Premier Gold 100%
Stage	Exploration – Resource Definition
Mine Type (potential)	Underground
Processing Plan	Third Party Roaster/Autoclave

Resources (March 2017)⁽⁶⁾

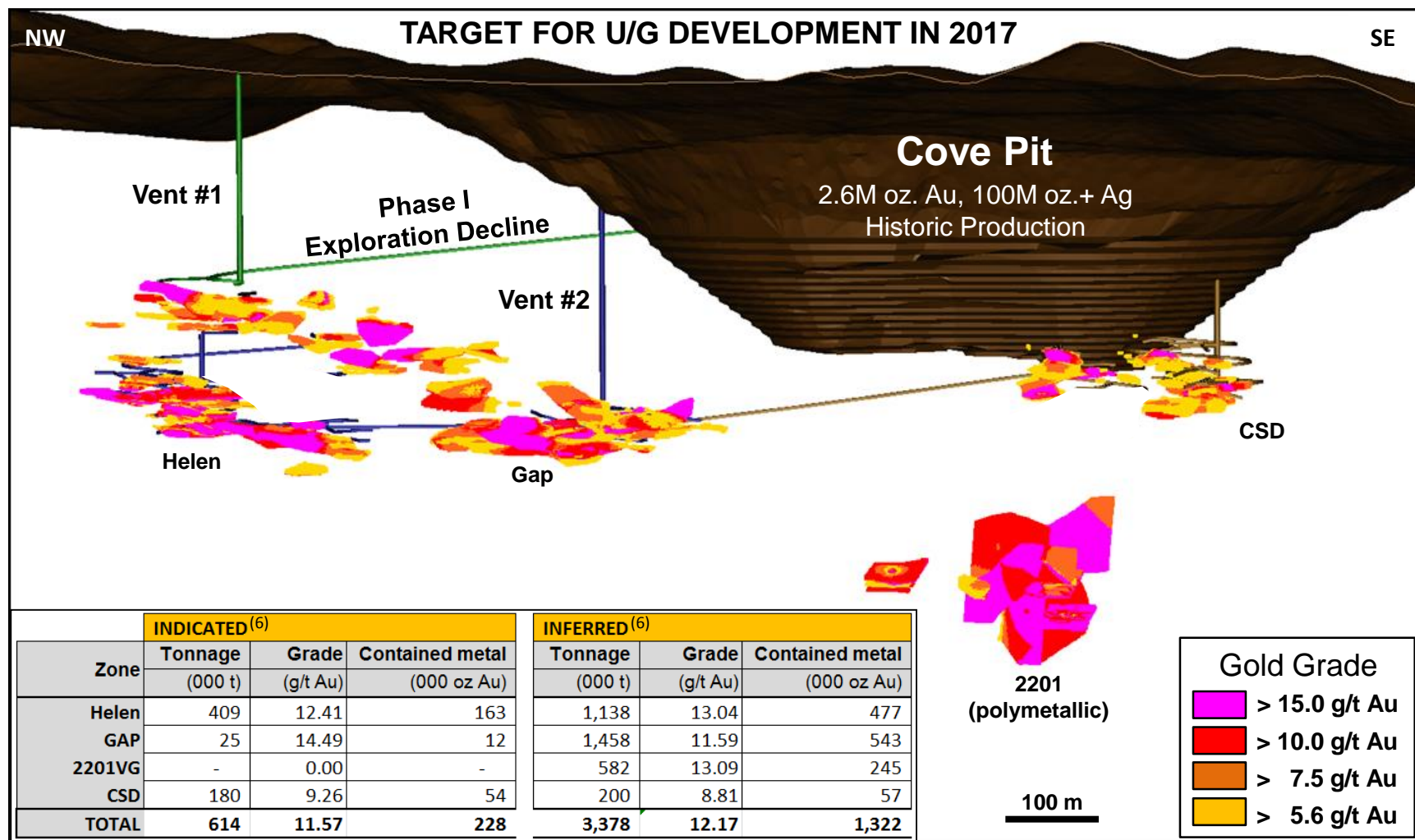
Resources	Category	Tonnes (Mt)	Gold (Au) Grade (g/t)	Au Ounces
U/G	Indicated	0.614	11.57	228,000
	Inferred	3.378	12.17	1,322,000

US\$ Commodity Prices for Resource Estimate: US\$1,400 for Gold

Project Highlights & Milestones:

- Go-forward initiatives:
 - Metallurgy to be completed in late Q3/17
 - Hydrological flow testing underway
 - Preliminary Economic Assessment (PEA) in H2/17
 - Underground infrastructure development late in Q4
 - Definition drilling from ramp in H2-2018
 - Test mining and Feasibility in H2-2018 / H1-2019

Exploration & Test Mining Program



3600L Plan View

Resource Class

- Unclassified (Pink)
- Inferred (Orange)
- Indicated (Green)

Legend:

- Red Star: Press Release DDH
- Black Star: Significant Intercepts

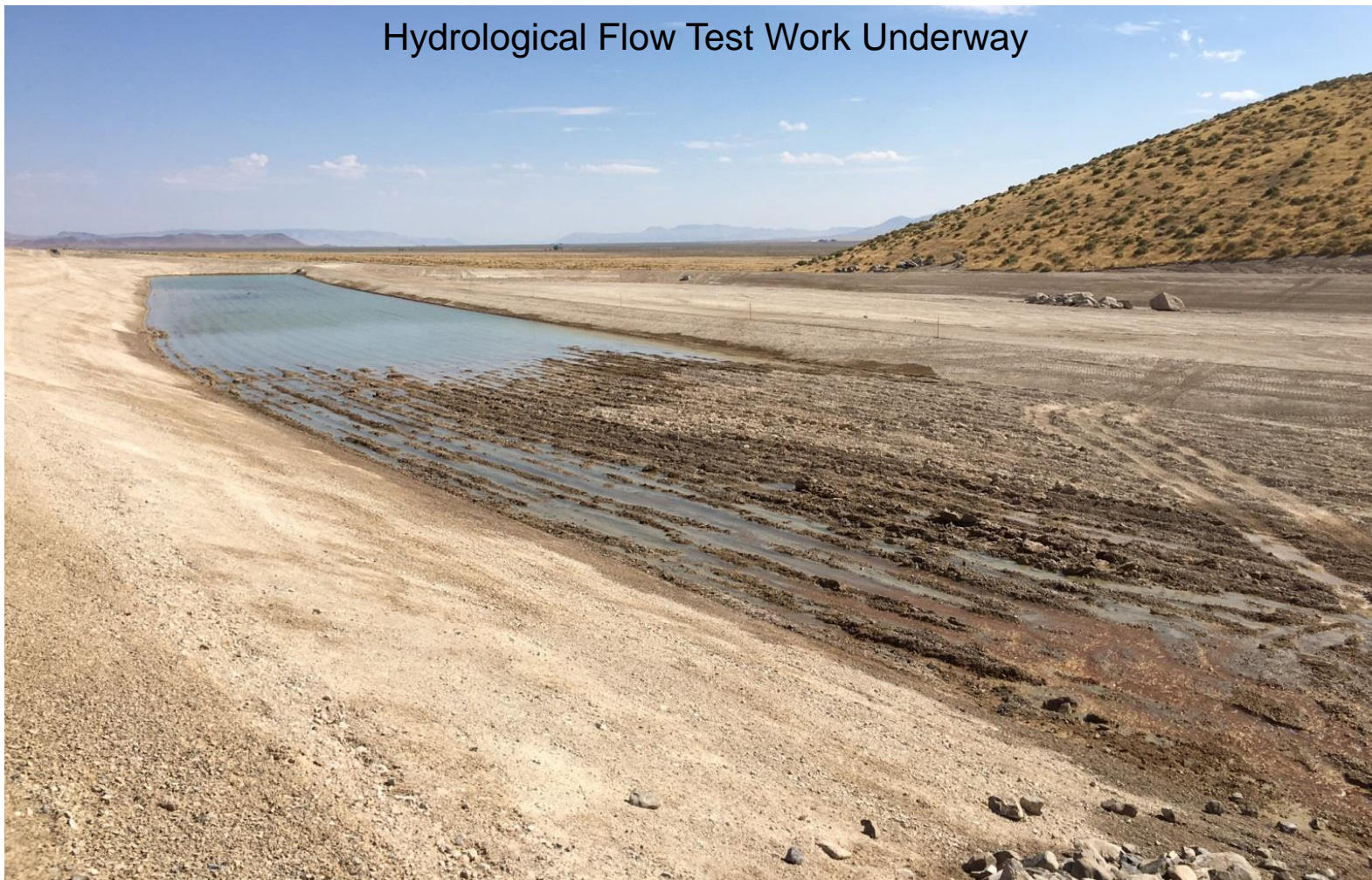
Scale: 60m

Map Labels:

- Lower Helen
- Gold Dome HW
- Gold Dome FW
- Bay Fault
- Drill Holes: PG16-01, PG16-02, PG16-05, PG16-06, PG16-07, PG16-08, PG16-09, PG16-10, PG16-11, PG16-12, PG16-14, PG16-15A, PG16-16, PG16-17, PG16-18, PG16-24, PG16-27, PG16-28, PG16-29, PG17-04, PG17-08, PG17-10, PG17-11, PG17-18, PG17-24, PG17-25, PG17-26, PG-01, AX-19, AX-21, AX-23, AX-49, CV1066, CV1067, CV1068, CV1069, CV1070A
- Press Release DDH: PG17-26 (12.5m @ 14.87 g/t Au), PG17-25 (8.5m @ 19.29 g/t Au), PG17-24 (15.8m @ 13.30 g/t Au)

Advancing Towards Underground Development

Hydrological Flow Test Work Underway

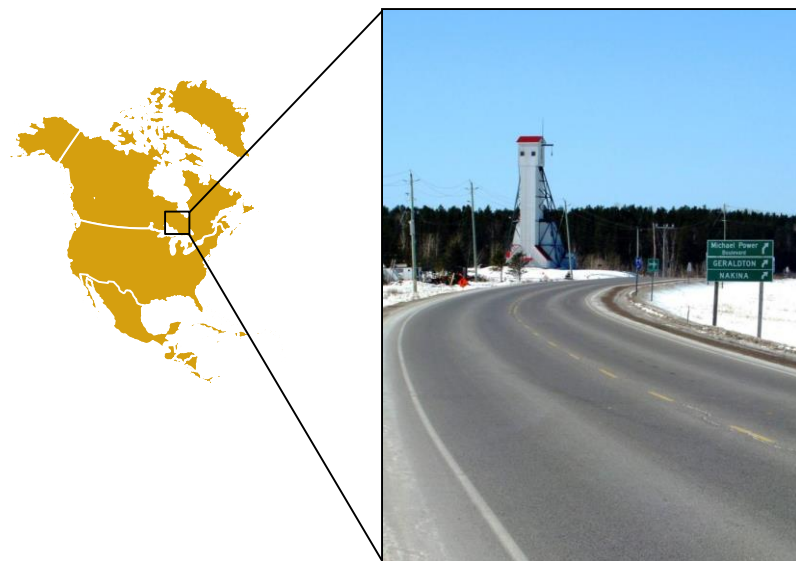


Construction of 2,400 m pipeline & 16 acre Rapid Infiltration Basin (“RIBS”) completed

Overview

- 28,550 Ha property located in Geraldton, Ontario; Premier open pit discovery in 2009
- Project consists of 4 deposits (open pit and underground) with only Hardrock open pit subject to economic study
- Centerra is sole-funding the initial CA\$185 Million spend with CA\$123.4M remaining (as at June 30, 2017)
- EA and EIS submitted to regulatory agencies – All affected Aboriginal groups have provided written support for the submission of the final EIS/EA

Located in a Historic Mining District



*CA\$ Commodity Prices for Resource and Reserve Estimate:
CA\$1,625 per gold ounce *OP=Open Pit, UG=Underground
See disclosure page for note 2 and forward looking statements

Key Metrics

Ownership	Premier 50% - Centerra 50%
Stage	Feasibility - Permitting
Mine Type (planned)	Open Pit
Plant Throughput Capacity (planned)	~27,000 tpd

Reserves and Resources⁽²⁾

Reserves

Category	Type	Cut-off (g/t)	Tonnes (kt)	Grade (g/t Au)	Contained Gold (koz)
Proven	(OP)	-	-	-	-
Probable	(OP)	0.33	141,715	1.02	4,647
Total P&P	(OP)	0.33	141,715	1.02	4,647

Resources

Category	Type	Cut-off (g/t)	Tonnes (kt)	Grade (g/t Au)	Contained Gold (koz)
Indicated	(OP)	0.30	11,440	0.36	131
	(UG)	2.00	13,692	3.91	1,720
Total	(OP/UG)	-	25,136	2.29	1,851
Inferred	(OP)	0.30	170	0.87	5
	(UG)	2.00	21,507	3.57	2,470
Total	(OP/UG)	-	21,677	3.55	2,475

Feasibility Study Results (Premier Case)



Project Highlights:

- LOM production: 14.5 year mine life - 4.2 M ounces of gold
- LOM grade: 1.11 g/t Au prior to low-grade stockpiles (1.02 g/t Au including stockpiles)
- Annual production: Approximately 300,000 ounces per year (excluding stockpiles)
- EA/EIS has been submitted and is under review / comment
- Additional development opportunities:
 - Hardrock underground deposit located down-plunge of pit
 - High-grade Brookbank deposit

Operating Cash Flow Summary (M CA\$)

Gross Revenue	6,813
Total Operating Costs	(2,950)
Operating Cash Flow Before Tax	3,845
Capex/Salvage/Closure	(1,520)
Taxes	(689)

Project Economics Before-Tax Results

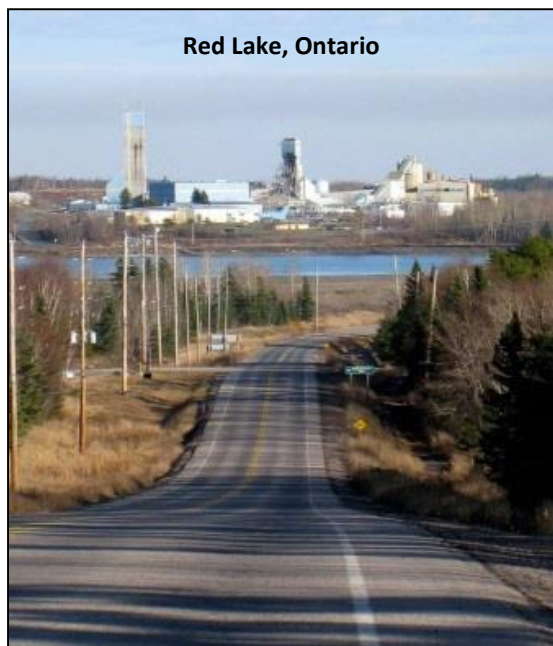
Cash Flow (M CA\$)	2,326
NPV 5% (M CA\$)	607*
Payback Period (years)	3.9
IRR (%)	21.1%*

Project Economics After-Tax Results

Cash Flow (M CA\$)	1,636
NPV 5% (M CA\$)	414*
Payback Period (years)	4.5
IRR (%)	17.5%*

Red Lake Projects, Ontario

- 100% ownership of the Hasaga Property – 44% ownership of the Rahill-Bonanza Property (JV with Goldcorp)
- Q1-2017 mineral resource estimate at Hasaga (0.05 g/t cutoff):
 - 1,124,000 oz at 0.83 g/t Au Indicated
 - 631,000 oz at 0.78 g/t Au Inferred
- Drill program at Hasaga testing higher grade structures



Goldbanks Project, Nevada

- Premier holds option to acquire up to a 50% interest in Goldbanks from Kinross Gold by spending US\$20M
- Goldbanks hosts an inferred mineral resource estimate of 556,700 ounces of gold contained within 25.7M tonnes @ 0.7 g/t Au ⁽¹⁾⁽²⁾
- Excellent high-grade potential - “Golden Devil” discovery by Kinross drilling (2013) intersected up to **192.00 g/t Au and 10,850.00 g/t Ag over 1.1m (5.61 oz/t Au and 316.46 oz/t Ag over 3.7 ft)**

- (1) resource estimate was completed in 2006 by Mine Development Associates of Reno, Nevada on behalf of Desert Gold Ventures Inc., an earlier partner on the project)
- (2) A qualified person has not done sufficient work to classify this historical estimate as current mineral resources and Premier is not treating this historical estimate as current mineral resources.

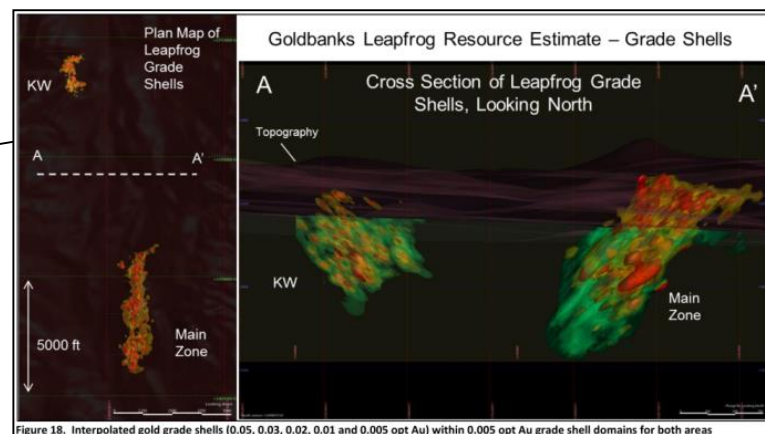


Figure 18. Interpolated gold grade shells (0.05, 0.03, 0.02, 0.01 and 0.005 opt Au) within 0.005 opt Au grade shell domains for both areas

A World of Opportunity

- 2017 production guidance:
 - 130,000-140,000 ounces of gold
 - 340,000-365,000 ounces of silver
- Three projects in permitting for future development (El Nino, McCoy-Cove, and Hardrock)
- Advanced-exploration program underway at McCoy-Cove with PEA targeted for completion in H2-2017
- Sustained company-wide exploration effort with active programs in Ontario, Nevada and Mexico

Ewan Downie
President & CEO

(807) 346-1390

John Begeman
Executive Chairman

(605) 484-3701

Stephen McGibbon
*Executive Vice-President
Corporate & Project Development*

(613) 376-6782

Matthew Gollat
*Corporate Development
Investor Relations*

(807) 346-1397

A World of Opportunity

PROVEN MANAGEMENT – WORLD-CLASS DISTRICTS – SAFE JURISDICTIONS-SENSIBLE
PARTNERSHIPS -

Symbol: PG

Exchange: TSX

John Begeman: Executive Chairman

Over 35 years experience in mining - Former VP western operations for Goldcorp, COO Wolfden Resources, President of Avion Gold Corp and is currently a director of Yamana Gold Inc. and African Gold Group Inc.

Ewan Downie: CEO, President and Director

Over 25 years experience in the exploration and mining industry - Founder of Wolfden Resources - recipient of the PDAC “Bill Dennis Prospector Of The Year” award and several Exploration and Development awards from the Northwestern Ontario Prospectors Association

Steve Filipovic: Chief Financial Officer

Chartered Professional Accountant with over 18 years’ experience in financial management and reporting, M&A, and international risk management, taxation and structuring. Previously held senior finance and director roles with several listed mining companies.

Stephen McGibbon: Executive Vice-President Corporate & Project Development

Over 30 years of exploration, mine production and management experience - Former Chief Geologist and Exploration Manager at the Red Lake Mine (Goldcorp) and senior member of the team that discovered the “High Grade Zone”

Charlie Ronkos: Executive Vice-President Project Development, Americas

More than 38 years of exploration and mining experience - formerly Executive Vice President Goldcorp Inc. and associated with the discovery of more than 40 million ounces of gold and 1.2 billion ounces of silver

Brent Kristof: Senior Vice-President Operations

Over 35 years’ experience of progressive leadership and management of underground and surface mining operations. Previously COO of Klondex, GM (Turquoise Ridge and Ridge mines) and several years leading operations teams for Newmont in Nevada.

Claude Lemasson: Director

More than 20 years of mining and development experience - Previously held senior mine development and operational roles with Goldcorp Inc. - formerly President and CEO Guyana Goldfields Inc. - currently President and CEO of Eastmain Resources

Ron Little: Director

More than 30 years experience in the mining industry – Formerly President and CEO of Orezone Gold Corporation

Tony Makuch: Director

More than 20 years of direct mining experience - formerly Executive Vice President / President of Canadian Operations of Tahoe Resources Inc., President and CEO of Lake Shore Gold Corp. - currently President and CEO of Kirkland Lake Gold

John Seaman: Director


Former CFO of Premier Gold Mines and Wolfden Resources Inc. - Currently President and CEO of a large private security Company

Mike Vitton: Director

Over 30 years experience in the mining finance industry - Formerly Executive Managing Director, Head, US Equity Sales, BMO Capital Markets, Seat Holder, NYSE; and President, New York Society of Metals Analysts.

NON-IFRS MEASURES

The Company has included certain terms or performance measures commonly used in the mining industry that are not defined under International Financial Reporting Standards (“IFRS”) in this document. These include: earnings before interest, tax, depreciation and amortization (“EBITDA”), cash cost per ounce sold, all in sustaining cost (“AISC”) per ounce sold and average realized price per ounce. Non-IFRS measures do not have any standardized meaning prescribed under IFRS, and therefore, they may not be comparable to similar measures employed by other companies. The data presented is intended to provide additional information and should not be considered in isolation or as a substitute for measures prepared in accordance with IFRS and should be read in conjunction with the Company's consolidated financial statements. Readers should refer to the Company's Management's Discussion and Analysis under the heading “Non-IFRS Measures” for a more detailed discussion of how such measures and are calculated.

Gold <i>USD, unless otherwise noted</i> Mine 	Guidance 2017			
	Production ounces	Realized Gold Price per ounce (i)	Cash Cost per ounce (i)	AISC per ounce (i)
South Arturo	45,000 - 50,000	\$1,250	\$440 - \$470	\$450 - \$480
Mercedes	85,000 - 90,000	\$1,250	\$680 - \$710	\$810 - \$840
Consolidated	130,000 - 140,000	\$1,250	\$580 - \$610	\$660 - \$690

Global Reserves

GOLD (Au) PROPERTY	PROVEN RESERVES			PROBABLE RESERVES			PROVEN+PROBABLE RESERVES		
	Tonnes (Mt)	Grade (g/t Au)	Au Ounces (000's)	Tonnes (Mt)	Grade (g/t Au)	Au Ounces (000's)	Tonnes (Mt)	Grade (g/t Au)	Au Ounces (000's)
Greenstone (Hardrock)	-	-	-	70.85	1.02	2,324	70.85	1.02	2,324
Mercedes (Note 1)	0.51	6.05	99	2.40	3.95	305	2.91	4.32	404
South Arturo (Note 2)	0.57	3.95	72	0.09	3.38	9	0.65	3.87	81
TOTAL	1.08	4.94	171	73.339	1.12	2,638	74.42	1.17	2,809

SILVER (Ag) PROPERTY	PROVEN RESERVES			PROBABLE RESERVES			PROVEN+PROBABLE RESERVES		
	Tonnes (Mt)	Grade (g/t Ag)	Ag Ounces (000's)	Tonnes (Mt)	Grade (g/t Ag)	Ag Ounces (000's)	Tonnes (Mt)	Grade (g/t Ag)	Ag Ounces (000's)
Greenstone (Hardrock)	-	-	-	-	-	-	-	-	-
Mercedes (Note 1)	0.51	51.45	842	2.40	32.32	2,497	2.91	35.66	3,339
South Arturo (Note 2)	-	-	-	-	-	-	-	-	-
TOTAL	0.51	51.45	842	2.403	32.32	2,497	2.91	35.66	3,339

Global Resources

GOLD (Au) PROPERTY	MEASURED RESOURCES			INDICATED RESOURCES			MEASURED+INDICATED RESOURCES			INFERRED RESOURCES		
	Tonnes (Mt)	Grade (g/t Au)	Au Ounces (000's)	Tonnes (Mt)	Grade (g/t Au)	Au Ounces (000's)	Tonnes (Mt)	Grade (g/t Au)	Au Ounces (000's)	Tonnes (Mt)	Grade (g/t Au)	Au Ounces (000's)
Greenstone	2.03	1.07	70	18.38	2.27	1,340	20.41	2.15	1,410	13.68	3.09	1,360
Mercedes (Note 1)	0.52	4.98	84	2.34	3.96	298	2.87	4.14	382	1.22	4.59	180
South Arturo (Note 2)	0	1.33	0.2	0.01	1.41	1	0.02	1.38	1	0	5.18	1
McCoy-Cove	-	-	-	0.61	11.57	228	0.61	11.55	228	3.38	12.17	1,322
Hasaga	-	-	-	42.29	0.83	1,124	42.29	0.83	1,124	25.14	0.78	631
TOTAL	2.56	1.87	154	63.64	1.46	2,991	66.2	1.48	3,144	43.42	2.5	3,494

SILVER (Ag) PROPERTY	MEASURED RESOURCES			INDICATED RESOURCES			MEASURED+INDICATED RESOURCES			INFERRED RESOURCES		
	Tonnes (Mt)	Grade (g/t Ag)	Ag Ounces (000's)	Tonnes (Mt)	Grade (g/t Ag)	Ag Ounces (000's)	Tonnes (Mt)	Grade (g/t Ag)	Ag Ounces (000's)	Tonnes (Mt)	Grade (g/t Ag)	Ag Ounces (000's)
Greenstone	-	-	-	-	-	-	-	-	-	-	-	-
Mercedes (Note 1)	0.52	64.65	1,085	2.34	44.52	3,355	2.87	48.19	4,440	1.22	33.14	1,300
South Arturo	-	-	-	-	-	-	-	-	-	-	-	-
McCoy-Cove	-	-	-	-	-	-	-	-	-	-	-	-
Hasaga	-	-	-	-	-	-	-	-	-	-	-	-
TOTAL	0.52	64.65	1,085	2.344	44.52	3,355	2.87	48.19	4,440	1.22	33.14	1,300

Note 1 - Reflects reserves and resources reported at June 30, 2016 Note 2 - Reflects reserves and resources reported at December 31, 2016