

BGM

TSX.V: BGM



BARKERVILLE GOLD MINES

PRECIOUS METALS SUMMIT PRESENTATION SEPTEMBER 2016

HIGH GRADE
HIGH RETURNS
LOW ENVIRONMENTAL IMPACT

FORWARD LOOKING STATEMENT

THIS PRESENTATION AND THE MATERIAL CONTAINED HEREIN ARE CONFIDENTIAL AND ARE FOR INFORMATION PURPOSES ONLY AND MAY NOT BE REPRODUCED OR DISTRIBUTED TO ANY OTHER PERSON OR PUBLISHED, IN WHOLE OR IN PART, FOR ANY PURPOSE WHATSOEVER. THIS PRESENTATION AND THE MATERIAL CONTAINED HEREIN DO NOT CONSTITUTE A GENERAL ADVERTISEMENT OR GENERAL SOLICITATION OR AN OFFER TO SELL OR A SOLICITATION TO BUY ANY SECURITIES IN ANY JURISDICTION. SUCH AN OFFER CAN ONLY BE MADE BY PROSPECTUS OR OTHER AUTHORIZED OFFERING DOCUMENT. THIS PRESENTATION AND MATERIALS OR FACT OF THEIR DISTRIBUTION OR COMMUNICATION SHALL NOT FORM THE BASIS OF, OR BE RELIED ON IN CONNECTION WITH, ANY CONTRACT, COMMITMENT OR INVESTMENT DECISION WHATSOEVER IN RELATION THERETO. BARKERVILLE GOLD MINES LTD.'S (THE "COMPANY") SECURITIES HAVE NOT BEEN REGISTERED UNDER THE UNITED STATES SECURITIES ACT OF 1933, AS AMENDED, AND MAY NOT BE OFFERED OR SOLD WITHIN THE UNITED STATES OR TO OR FOR THE ACCOUNT OR BENEFIT OF U.S. PERSONS ABSENT U.S. REGISTRATION OR AN APPLICABLE EXEMPTION FROM U.S. REGISTRATION REQUIREMENTS. ANY PUBLIC OFFERING IN THE UNITED STATES MUST BE MADE BY MEANS OF A PROSPECTUS CONTAINING DETAILED INFORMATION ABOUT THE COMPANY AND MANAGEMENT, AS WELL AS FINANCIAL STATEMENTS. THE INFORMATION IN THIS PRESENTATION IS NOT INTENDED IN ANY WAY TO QUALIFY, MODIFY OR SUPPLEMENT ANY PROSPECTUS OR OTHER INFORMATION DISCLOSED UNDER THE CORPORATE AND SECURITIES LEGISLATION OF ANY JURISDICTION RELATING TO THE COMPANY. NO SECURITIES COMMISSION OR SIMILAR AUTHORITY IN CANADA HAS IN ANY WAY PASSED UPON THE ADEQUACY OR ACCURACY OF THE INFORMATION CONTAINED IN THIS PRESENTATION.

SOME OF THE STATEMENTS CONTAINED IN THE FOLLOWING MATERIAL ARE "FORWARD-LOOKING STATEMENTS". ALL STATEMENTS IN THIS PRESENTATION, OTHER THAN STATEMENTS OF HISTORICAL FACTS, THAT ADDRESS ESTIMATED MINERAL RESOURCE AND RESERVE QUANTITIES, GRADES AND CONTAINED METAL, AND POSSIBLE FUTURE MINING, EXPLORATION AND DEVELOPMENT ACTIVITIES, ARE FORWARD-LOOKING STATEMENTS. ALTHOUGH THE COMPANY BELIEVES THE EXPECTATIONS EXPRESSED IN SUCH FORWARD-LOOKING STATEMENTS ARE BASED ON REASONABLE ASSUMPTIONS, SUCH STATEMENTS SHOULD NOT BE IN ANY WAY CONSTRUED AS GUARANTEES OF FUTURE PERFORMANCE AND ACTUAL RESULTS OR DEVELOPMENTS MAY DIFFER MATERIALLY FROM THOSE IN THE FORWARD-LOOKING STATEMENTS. ACCORDINGLY, READERS SHOULD NOT PLACE UNDUE RELIANCE ON FORWARD-LOOKING STATEMENT OR INFORMATION. FACTORS THAT COULD CAUSE ACTUAL RESULTS TO DIFFER MATERIALLY FROM THOSE IN FORWARD-LOOKING STATEMENTS INCLUDE MARKET PRICES FOR METALS, THE CONCLUSIONS OF DETAILED FEASIBILITY AND TECHNICAL ANALYSES, LOWER THAN EXPECTED GRADES AND QUANTITIES OF RESOURCES, MINING RATES AND RECOVERY RATES AND THE LACK OF AVAILABILITY OF NECESSARY CAPITAL, WHICH MAY NOT BE AVAILABLE TO THE COMPANY ON TERMS ACCEPTABLE TO IT OR AT ALL. ALL PHASES OF THE COMPANY'S OPERATIONS ARE SUBJECT TO ENVIRONMENTAL REGULATION AND GOVERNMENT APPROVAL AND PERMITS AND THERE CAN BE NO ASSURANCE THAT THE COMPANY WILL OBTAIN ALL THE REQUISITE PERMITS FOR FUTURE DEVELOPMENT. THE COMPANY IS SUBJECT TO THE SPECIFIC RISKS INHERENT IN THE MINING BUSINESS AS WELL AS GENERAL ECONOMIC AND BUSINESS CONDITIONS. THE COMPANY DOES NOT INTEND, AND DOES NOT ASSUME ANY OBLIGATION, TO UPDATE THESE FORWARD-LOOKING STATEMENTS, EXCEPT AS REQUIRED UNDER APPLICABLE SECURITIES LEGISLATION. FOR MORE INFORMATION ON THE COMPANY, READERS SHOULD REFER TO WWW.SEDAR.COM FOR THE COMPANY'S FILINGS WITH THE CANADIAN SECURITIES REGULATORY AUTHORITIES.

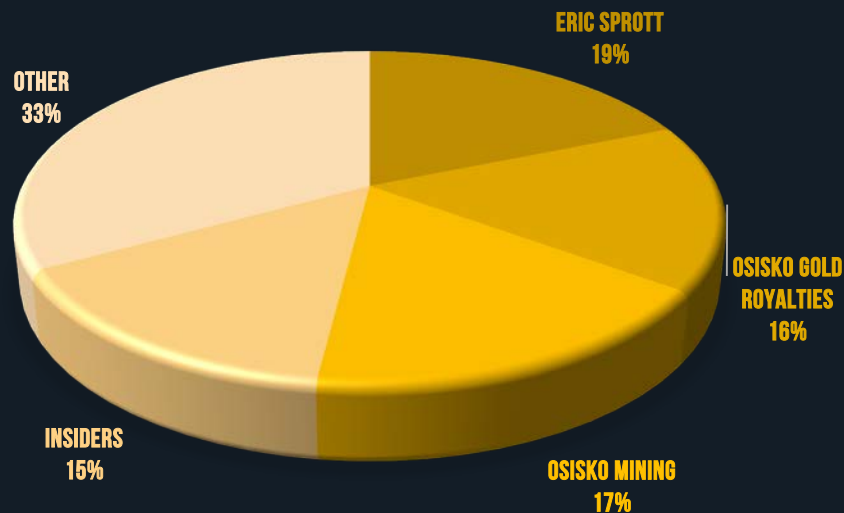
THE VISION:

BUILD A SUSTAINABLE, LOW IMPACT,
HIGH SOCIO-ECONOMIC RETURN
MINING COMPANY, IN BRITISH
COLUMBIA'S HISTORIC CARIBOO
MINING DISTRICT

- **SHORT TERM GOAL:** UNDERGROUND PRODUCTION FROM BONANZA LEDGE & BC VEIN IN 2017
- **LONG TERM OBJECTIVE:** DEFINE AN ECONOMIC RESOURCE & RESERVE BASE WHICH ALLOWS PRODUCTION GROWTH AND A NEW NEAR SITE PROCESSING FACILITY

CURRENT SHARE STRUCTURE (SEPT 1, 2016)

BASIC SHARES OUTSTANDING	301,225,657
WARRANTS	12,994,950
OPTIONS	17,087,661
FULLY DILUTED	331,308,268
52 WEEK RANGE	\$0.20 — \$0.76
CASH (MAY 30 2016)	~43 M
MARKET CAPITALIZATION	~\$205M



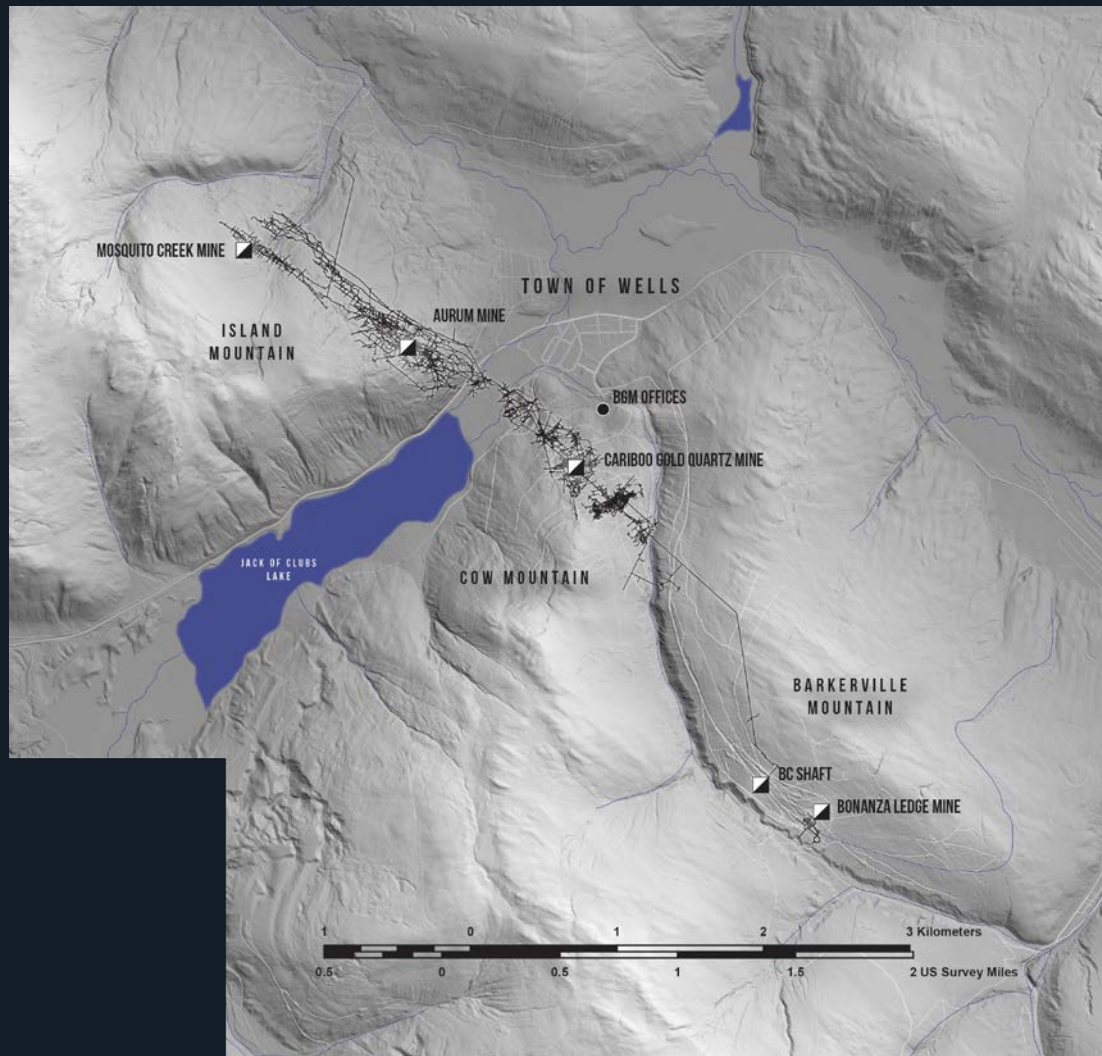
BRITISH COLUMBIA'S CARIBOO GOLD PROJECT

- 2,119 KM² OF MINERAL RIGHTS
- JURASSIC AGED MESOTHERMAL VEIN AND REPLACEMENT DEPOSITS
- 95% CONTROLLED BY BGM
- 6 HISTORIC LODE MINES PRODUCED 1.3 M OZ
- 3.2 M OZ OF RECORDED ALLUVIAL GOLD PRODUCTION FROM 101 STREAMS



PRINCIPAL PROJECT AREA

- THREE PAST PRODUCERS - **1.26 MOZ**
- CAMP GRADE AVERAGE **0.41 OZ/T**
- AURUM MINE - **0.57 MOZ** 1934-1967
- CARIBOO GOLD QUARTZ MINE - **0.63 MOZ** 1933-1959
- MOSQUITO CREEK MINE - **0.03 MOZ** 1980-1987
- BONANZA LEDGE - **0.03 MOZ** 2014-2015
- JURASSIC AGED **MESOTHERMAL VEIN** AND **REPLACEMENT** DEPOSITS



PRINCIPAL PROJECT AREA LONG SECTION

LOOKING NORTHEAST

(6 KILOMETRES OF 67 KILOMETRES)

BGM
TSX.V: BGM

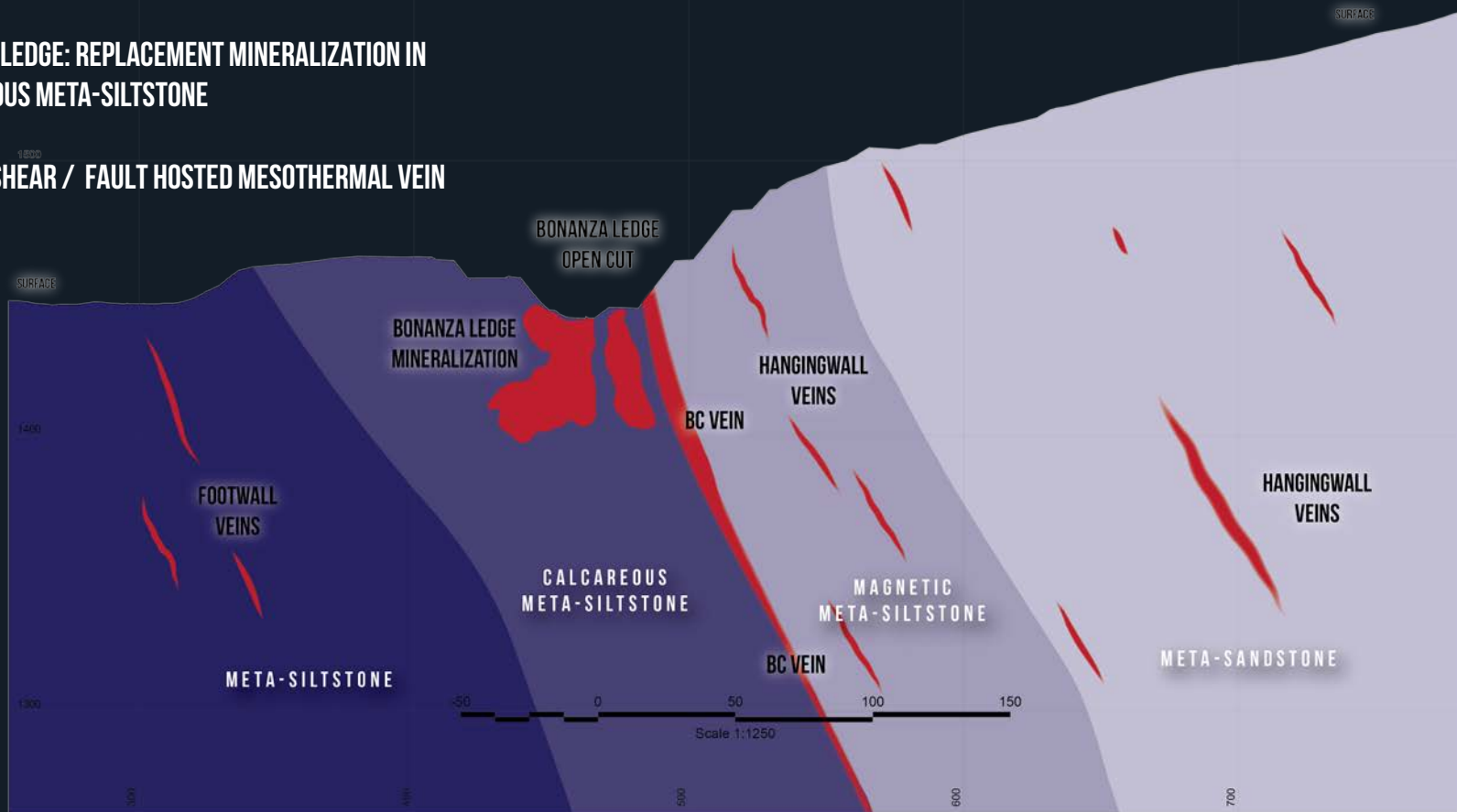
BGM
TSX.V: BGM



BARKERVILLE MOUNTAIN CROSS SECTION

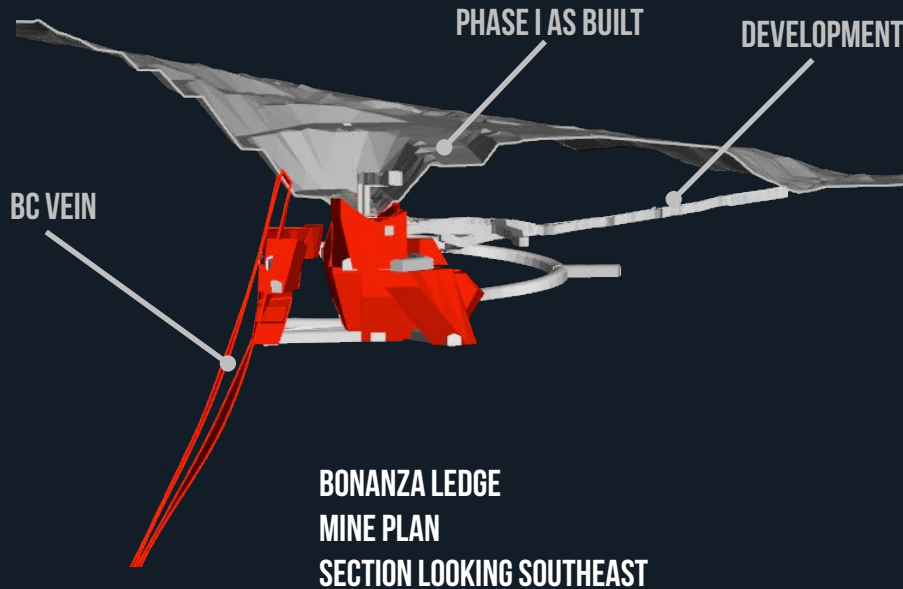
LOOKING NORTHWEST

- **BONANZA LEDGE: REPLACEMENT MINERALIZATION IN CALCAREOUS META-SILTSTONE**
- **BC VEIN: SHEAR / FAULT HOSTED MESOTHERMAL VEIN**



BONANZA LEDGE 2016 MINE PLAN

LOOKING SE



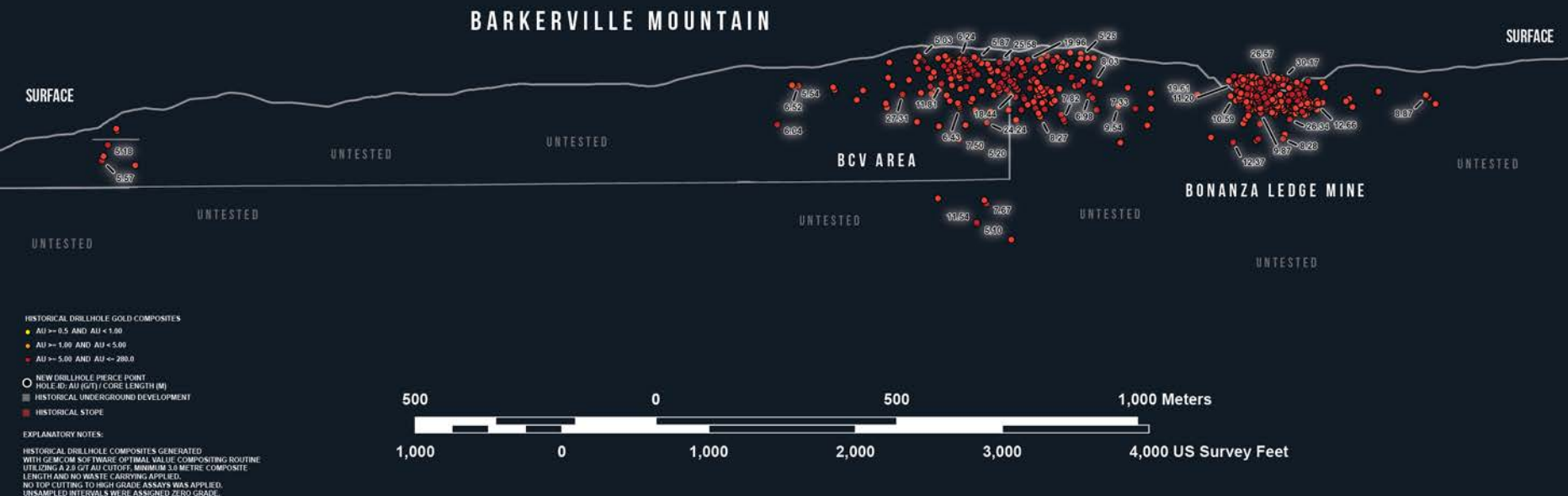
- WHOLLY UNDERGROUND OPERATION
- CONTRACT MINING
- ORE TRUCKED TO QR MILL
- LONG HOLE AND CEMENTED ROCK FILL
- ~500 TPD – 150,000 T / YR
- INITIAL LIFE OF MINE ~2 YEARS
- INITIAL TARGET ~ 30,000 OZ / YR
- ~300,000 TONNES AT ~7.0 GPT AU
- INITIAL CAPITAL C\$ 7 M

BARKERVILLE MOUNTAIN LONG SECTION

LOOKING NORTHEAST

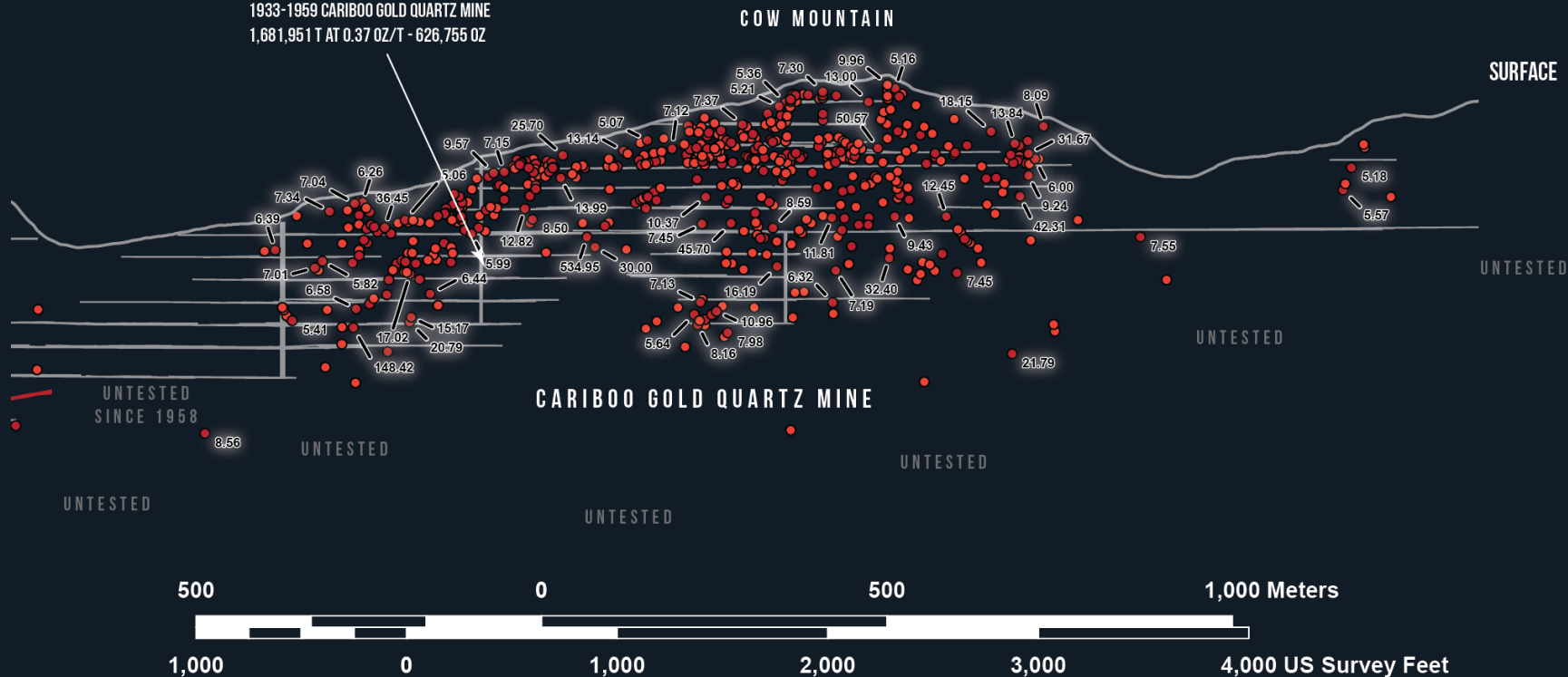
BGM
TSX.V: BGM

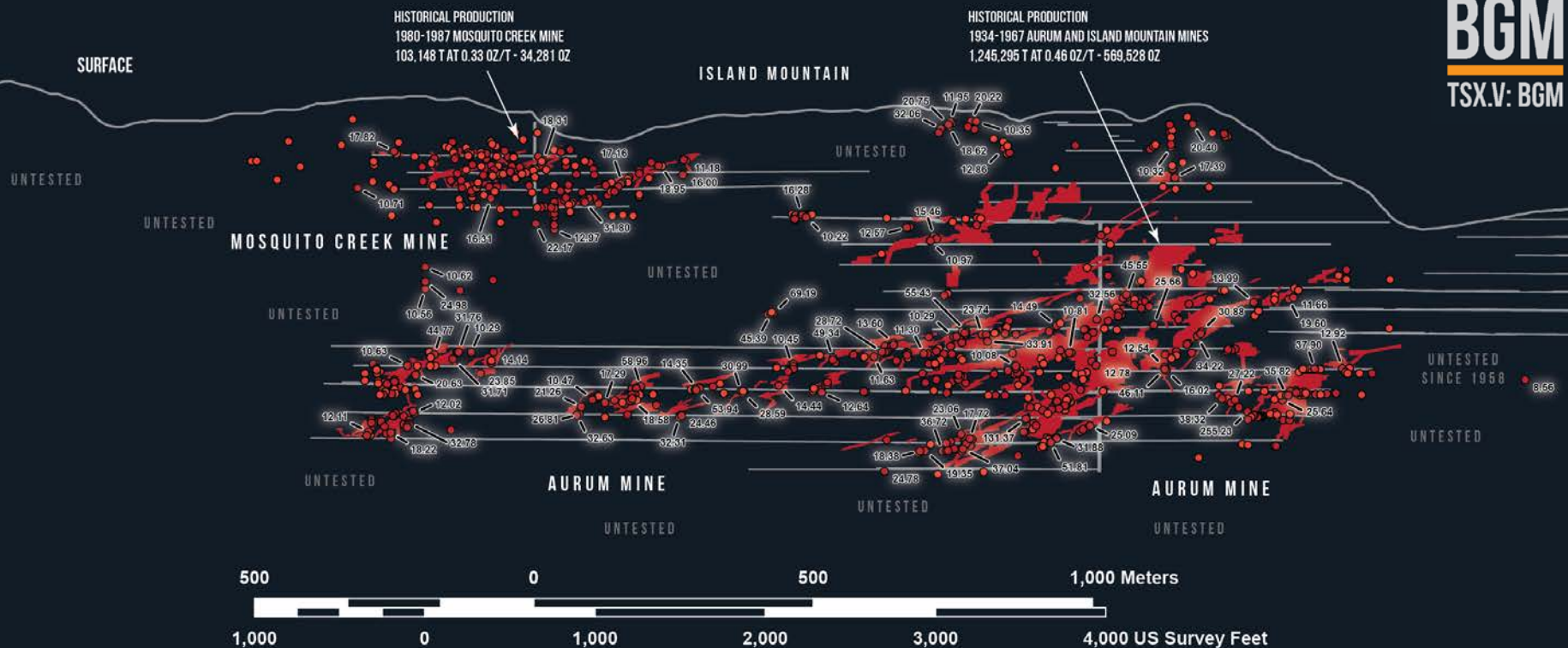
- ~50,000 M OF DRILLING COMPLETED SINCE Q3 2015
- EXPAND AND CONVERT HIGHER GRADE ZONES TO RESERVES IN 2017 AND 2018
- OPEN ALONG STRIKE AND DEPTH
- SHORT TERM FEED TO SUPPLEMENT BONANZA LEDGE



LOOKING NORTHEAST

- ~32,000 METRE OF SHALLOW DRILLING COMPLETE IN 2016
- ~56,000 METRES OF HISTORICAL CORE RE-LOGGED
- PROGRAM DESIGNED TO UPGRADE NEAR SURFACE AREAS OF LOW CONFIDENCE & SELECTIVELY REPLACE SOME HISTORIC DRILLING



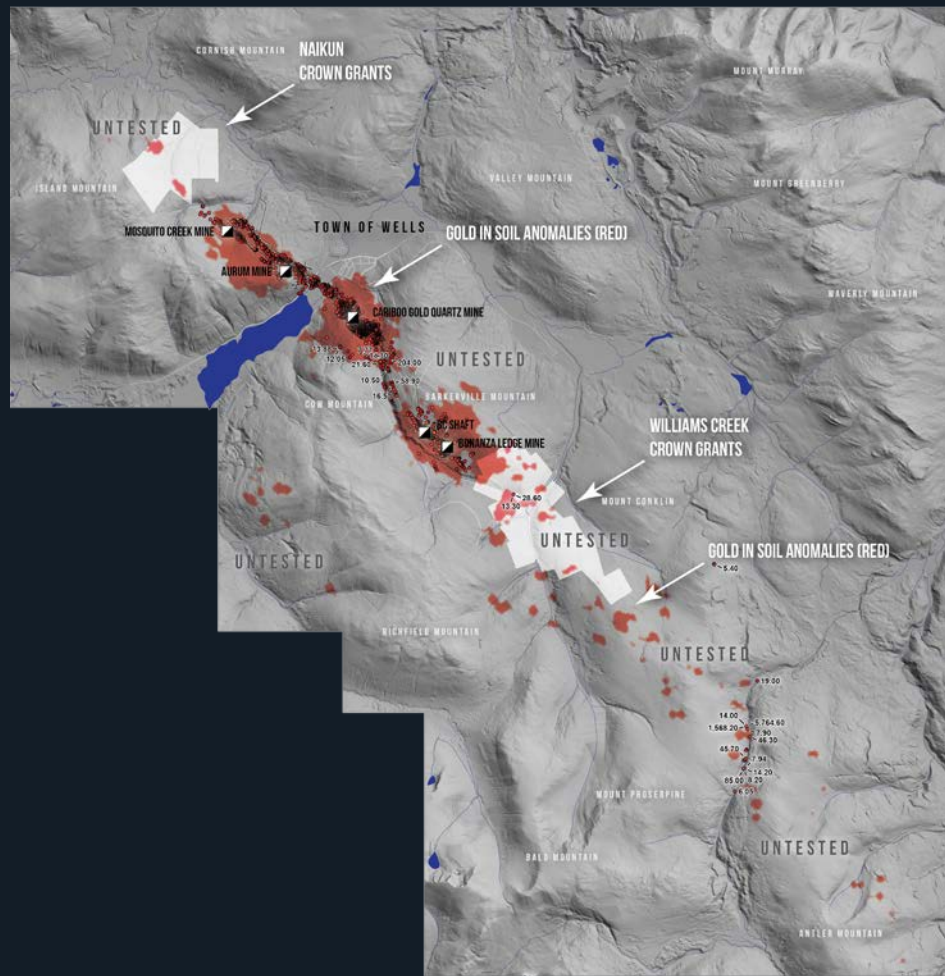
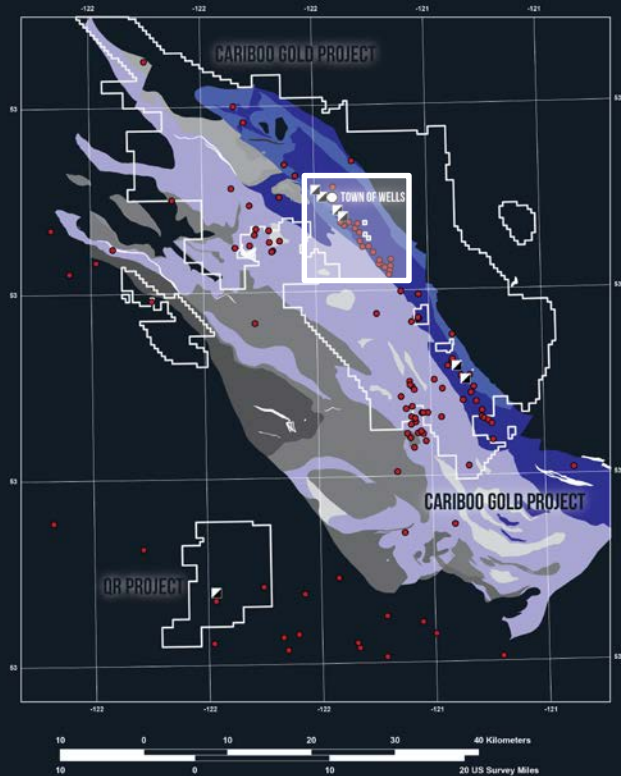


- **PHASE I DRILLING IN PROGRESS**
- **VEIN AND REPLACEMENT STYLE MINERALIZATION**
- **LAST DRILLING CAMPAIGN 2004**
- **DISJOINTED LANDS PROHIBITED EXPLORATION AND DEVELOPMENT**

ISLAND MOUNTAIN LONG SECTION
LOOKING NORTHEAST

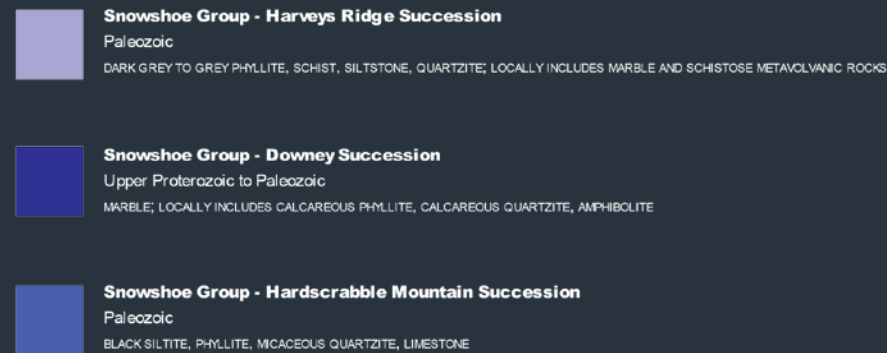
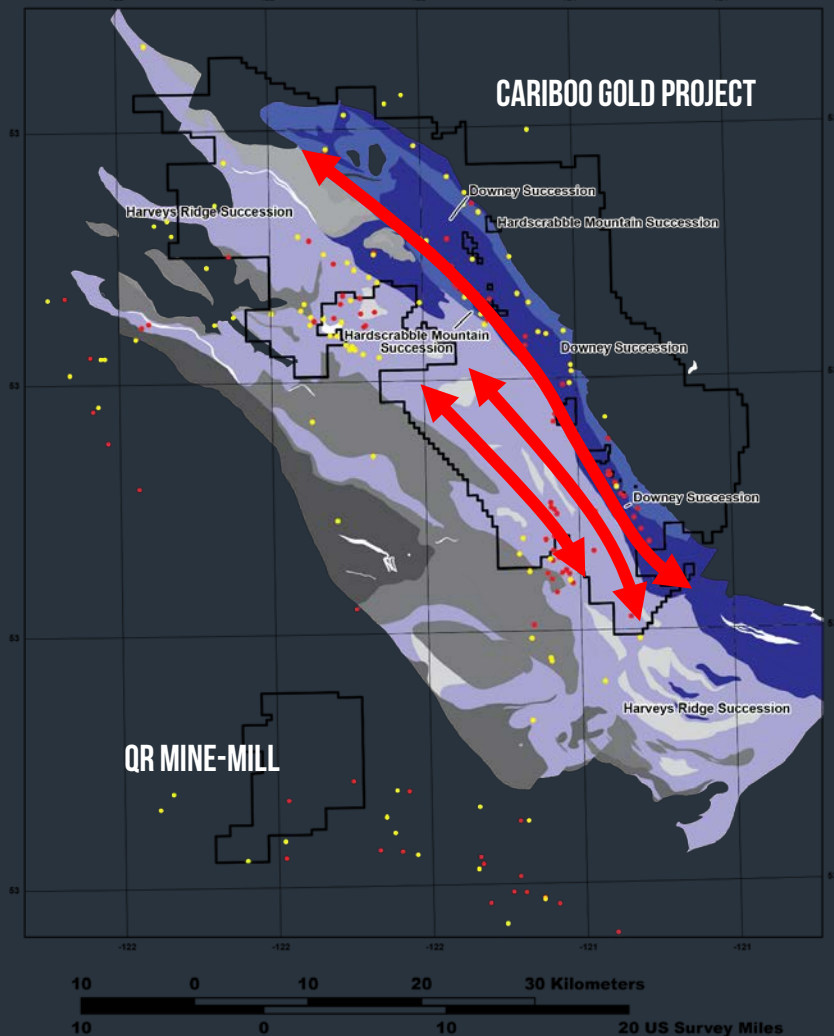
EXTENSIONS TO PRINCIPAL AREA

EXPLORATION



GREENFIELDS EXPLORATION

- GENERATED 131 NEW TARGETS IN 2016
- NEW PARALLEL TRENDS EMERGING
- LIMITED HISTORIC SYSTEMATIC EXPLORATION DUE TO FRAGMENTED LAND POSITION
- MULTI -YEAR REGIONAL SOILS AND PROSPECTING EXPLORATION PROGRAM
- AIRBORNE MAGNETICS AND VTEM SURVEY.



ORGANIC GROWTH

VIA A STRONG PIPELINE



REGIONAL TARGETS

131 TARGETS GENERATED
(2016)

3 TARGETS PENDING
DRILL TESTING



RESOURCES

BARKERVILLE MOUNTAIN
COW MOUNTAIN
ISLAND MOUNTAIN



NEAR TERM PRODUCTION

BONANZA LEDGE
BC VEIN



LONG TERM PRODUCTION

COW MOUNTAIN
ISLAND MOUNTAIN



G R O W T H

STRONG LEADERSHIP: MANAGEMENT

CHRIS LODDER PRESIDENT/CEO/DIRECTOR

- 25+ YEARS OF GREENFIELD AND BROWNFIELD EXPLORATION
- PRESIDENT OF TALISKER EXPLORATION SERVICES, FORMER EXPLORATION MANAGER FOR THE AMERICAS FOR ANGLOGOLD ASHANTI.
- TALISKER TEAM RESPONSIBLE FOR 28 M OZ IN 3 GREENFIELD DISCOVERIES

PAUL GEDDES, VP EXPLORATION, P.GEO, QP

- NORANDA MINING AND EXPLORATION LTD., TECK EXPLORATION LTD.
- 1000% INCREASE IN GLOBAL GOLD RESOURCES FOR RAINY RIVER PRIOR TO THE COMPANY'S TAKEOVER BY NEW GOLD IN OCTOBER 2013

LUC LESSARD, CHIEF OPERATING OFFICER, P.ENG.

- 25 YEARS OF EXPERIENCE DESIGNING, BUILDING AND OPERATING MINES.
- PRESENTLY CEO AND DIRECTOR OF FALCO RESOURCES, SENIOR VICE-PRESIDENT, TECHNICAL SERVICES OF OSISKO GOLD ROYALTIES, AND SITS ON THE BOARD OF DIRECTORS OF HIGHLAND COPPER AND BOWMORE EXPLORATION.

CHRIS PHARNESS, VP ENVIRONMENT AND SUSTAINABILITY

- ENVIRONMENTAL PROFESSIONAL WITH STRONG BACKGROUND IN ENVIRONMENTAL MANAGEMENT AND MITIGATION ON NORTH CENTRAL BC
- RESPONSIBLE FOR GOVERNMENT, COMMUNITY AND FIRST NATIONS RELATIONS

ANDRES TINAJERO, CHIEF FINANCIAL OFFICER, CPA, MBA, ICD.D

- 20+ YEARS OF FINANCIAL AND RISK MANAGEMENT OF PUBLIC COMPANIES ACROSS NORTH AMERICA. HE HAS SUPPORTED A BOARD RANGE OF INDUSTRIES INCLUDING: NATURAL RESOURCES, MANUFACTURING & TECHNOLOGY.

STRONG LEADERSHIP: BOARD OF DIRECTORS

SEAN ROOSEN CO-CHAIRMAN

- CHAIRMAN AND CEO OSISKO GOLD ROYALTIES INC.
- LED THE TRANSITION OF OLD OSISKO FROM A JUNIOR EXPLORATION COMPANY TO A LEADING INTERMEDIATE GOLD PRODUCER.
- INSTRUMENTAL IN \$1 BILLION FINANCING AND DEVELOPMENT OF MALARCTIC MINE.

GREG GIBSON CO-CHAIRMAN

- MINE MANAGER OF DYNATEC. PRESIDENT AND CEO OF TRELAWNEY MINING AND EXPLORATION WHEN ACQUIRED BY IAMGOLD FOR \$608 M
- CURRENTLY PRESIDENT & CEO OF JERRITT CANYON GOLD LLC & SPROTT MINING INC

CHRIS LODDER PRESIDENT/CEO/DIRECTOR

- 25+ YEARS OF GREENFIELD AND BROWNFIELD EXPLORATION
- PRESIDENT OF TALISKER EXPLORATION SERVICES, FORMER EXPLORATION MANAGER FOR THE AMERICAS FOR ANGLOGOLD ASHANTI.
- TALISKER TEAM RESPONSIBLE FOR 28 M OZ IN 3 GREENFIELD DISCOVERIES

THOMAS OBRADOVICH DIRECTOR

- 30+ YEARS MINING EXPLORATION, DEVELOPMENT
- PRESIDENT AND CEO OF YOUNG DAVIDSON MINES
- CO-FOUNDER AND LEAD DIRECTOR OF AURELIAN RESOURCES, ACQUIRED BY KINROSS GOLD MINES FOR \$1.2 BILLION
- LEAD DIRECTOR, DALDARIAN RESOURCES

ANTHONY MAKUCH DIRECTOR

- PROFESSIONAL ENGINEER (ONTARIO)
- PRESIDENT AND CEO OF KIRKLAND LAKE GOLD
- FORMER PRESIDENT AND CEO OF LAKE SHORE GOLD
- FORMER SENIOR VP AND COO OF FXN MINING COMPANY INC.

MORRIS PRYCHIDNY DIRECTOR

- CACPA LIFE MEMBER
- SERVES AS CHAIR OF BGM'S AUDIT COMMITTEE
- AUDIT COMMITTEE CHAIR FOR NORTHFIELD CAPITAL
- DIRECTOR AT NIGHTHAWK GOLD CORP.

JOHN KUTKEVICIUS DIRECTOR

- PARTNER AT WILDEBOER DELLELCE LLP
- CORPORATE AND TAX LAW SPECIALIST
- MEMBER OF THE COMPENSATION COMMITTEE

ALLAN FOLK DIRECTOR

- PENSION PORTFOLIO MANAGER
- INSTITUTIONAL EQUITY SALES
- FINANCIAL ADVISOR

IAN GORDON DIRECTOR

- FOUNDER AND WRITER FOR LONG WAVE GROUP
- LONG DISTINGUISHED CAREER AS A BROKER
- FORMER VP OF BOLDER INVESTMENT PARTNERS



BARKERVILLE GOLD MINES

CHRIS LODDER

PRESIDENT AND CEO

+1 416 388 1670

CLODDER@BARKERVILLEGOLD.COM

- **EXPERIENCED LEADERSHIP**
- **FINANCIALLY AND TECHNICALLY SUPPORTIVE MAJOR SHAREHOLDERS BASE**
- **SUSTAINABLE - LOW IMPACT — HIGH-MARGIN MINING**
- **STRONG SOCIO-ECONOMIC BENEFITS**
- **FOCUSED & DISCIPLINED EXPLORATION ON HIGH QUALITY TARGETS**