



Precious Metals Summit  
Beaver Creek, Colorado  
September 2015

TSX-V: RK



# Forward Looking Statements

Certain information regarding the Company contained herein may constitute forward-looking statements within the meaning of applicable securities laws. Forward-looking statements may include estimates, plans, expectations, opinions, forecasts, projections, guidance or other statements that are not statements of fact. Although the Company believes that the expectations reflected in such forward-looking statements are reasonable, it can give no assurance that such expectations will prove to have been correct. The Company cautions that actual performance will be affected by a number of factors, many of which are beyond the Company's control, and that future events and results may vary substantially from what the Company currently foresees. Discussion of the various factors that may affect future results is contained in the Company's Annual Report which is available at [www.sedar.com](http://www.sedar.com). The Company's forward-looking statements are expressly qualified in their entirety by this cautionary statement.

Additional information about the Klaza property mineral resource is summarized in Rockhaven's June 19, 2015 amended technical report titled "Geology, Mineralization, Geochemical Surveys, Geophysical Surveys, Diamond and Percussion Drilling, Metallurgical Testing and Mineral Resources on the Klaza Property, Yukon, Canada" which can be viewed at [www.sedar.com](http://www.sedar.com) under the Rockhaven profile or on the Rockhaven website at [www.rockhavenresources.com](http://www.rockhavenresources.com).

The 2015 exploration program is managed by Archer, Cathro & Associates (1981) Limited. The technical information in this presentation has been approved by Matthew R. Dumala, P.Eng., a geological engineer with Archer Cathro and qualified person for the purpose of National Instrument 43-101.



# Focus on Flagship Klaza Project

- Gold-Silver-Lead-Zinc CBM-style mineralization
- 100% owned with no NSR's on resource areas
- Road accessible-only 50 km from local community and 8 km from historical gold mine
- 70,000 m of drilling in 295 holes completed to date

## 2015 Highlights Include:

- Inferred resource includes 7,040,000 tonnes containing 948,348 oz gold and 21,780,313 oz silver averaging 4.19 g/t gold and 96.23 g/t silver at a 1.5 g/t gold cut-off
- 14,000 m diamond drill program
- Engineering and permitting studies
- Metallurgical tests yielded 95.0% gold and 90.8% silver recovery
- Exploration Benefits Agreement signed with local First Nations
- Property consolidation - now 25,000 hectares



# Track Record of Exploration Success

## Management / Directors / Advisors

<b>Matt A. Turner, B.Sc.</b>	<b>CEO and Director</b>
<b>Rob C. Carne, M.Sc., P.Geo.</b>	<b>President and Director</b>
<b>Ian J. Talbot, B.Sc., LLB.</b>	<b>COO</b>
<b>Larry Donaldson, CA</b>	<b>CFO</b>
<b>Glenn R. Yeadon, B.Comm., LLB.</b>	<b>Director</b>
<b>Bruce A. Youngman, B.Sc.</b>	<b>Director</b>
<b>Randy C. Turner, B.Sc., P.Geo</b>	<b>Director</b>
<b>R. Allan Doherty, P.Geo.</b>	<b>Director</b>
<b>David G. Skoglund</b>	<b>Director</b>
<b>Bradley J. Shisler</b>	<b>Director</b>
<b>Jeremy Richards, Ph.D., P.Geo.</b>	<b>Technical Advisor</b>



## Project Management

Provided by Archer Cathro & Associates (1981) Limited, an in-house geological engineering and exploration firm and pre-eminent Yukon exploration consulting firm since 1965. Discoveries and/or deposits made or advanced by Archer Cathro and management:

<b>Casino – Western Copper</b>	<b>Marg – Golden Predator</b>	<b>Ice – Yukon Zinc</b>
<b>Carmacks Copper– Copper North</b>	<b>Blende – Blind Creek</b>	<b>Wellgreen – Wellgreen Platinum</b>
<b>Revenue – Northern Freegold</b>	<b>Wolverine – Yukon Zinc</b>	<b>Division Mountain – Pitch Black</b>
<b>Tiger – ATAC Resources</b>	<b>Osiris – ATAC Resources</b>	<b>Klaza – Rockhaven Resources</b>

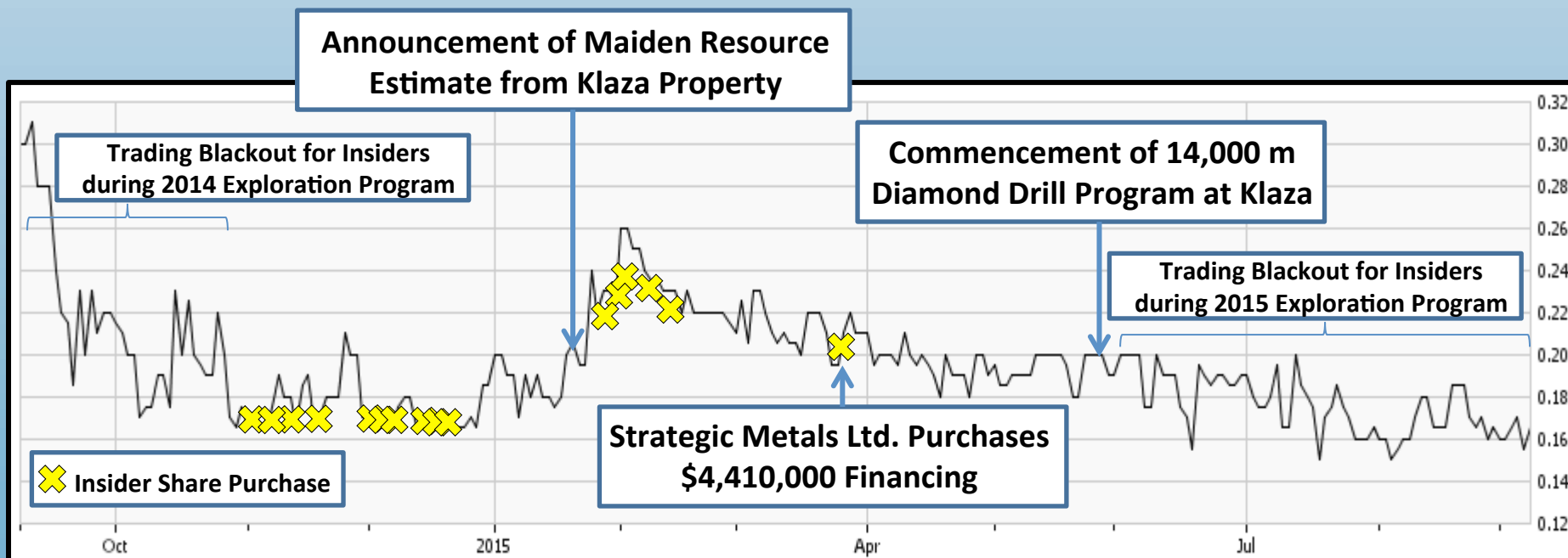


# Strong Insider Ownership

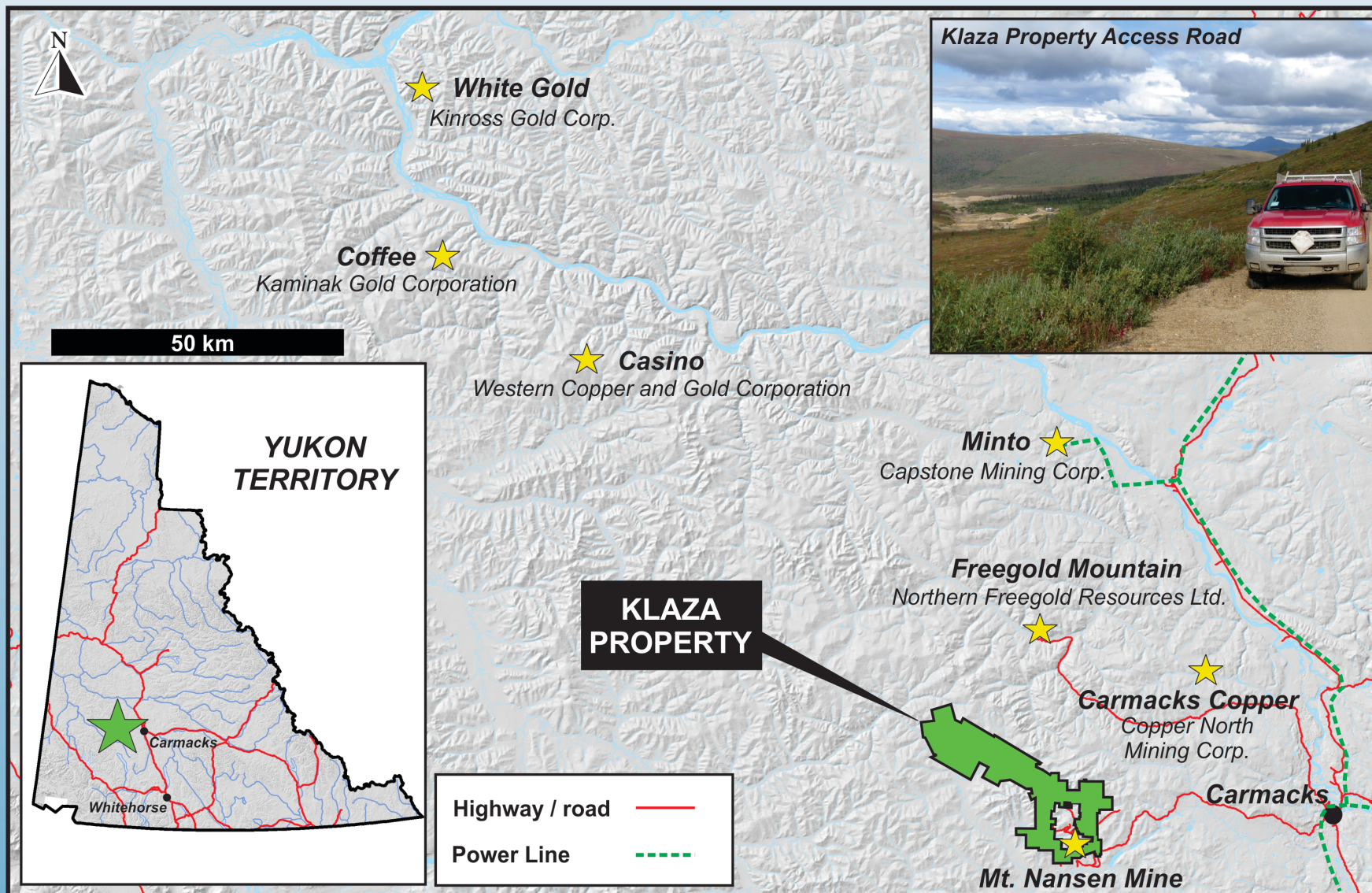
SHARES OUTSTANDING:	105,156,381
SHARES FULLY DILUTED:	114,696,381
MARKET CAPITALIZATION:	\$17,000,000
WORKING CAPITAL:	~\$700,000*

\* Additional \$2,000,000 unused credit facility in place

SIGNIFICANT HOLDERS:	SHARES	%
STRATEGIC METALS LTD	49,047,500	46%
INSIDERS	15,062,334	14%
TOCQUEVILLE	6,400,000	6%
TOTAL:	48,839,834	66%



# Road-Accessible Location and Recently Expanded Claimblock





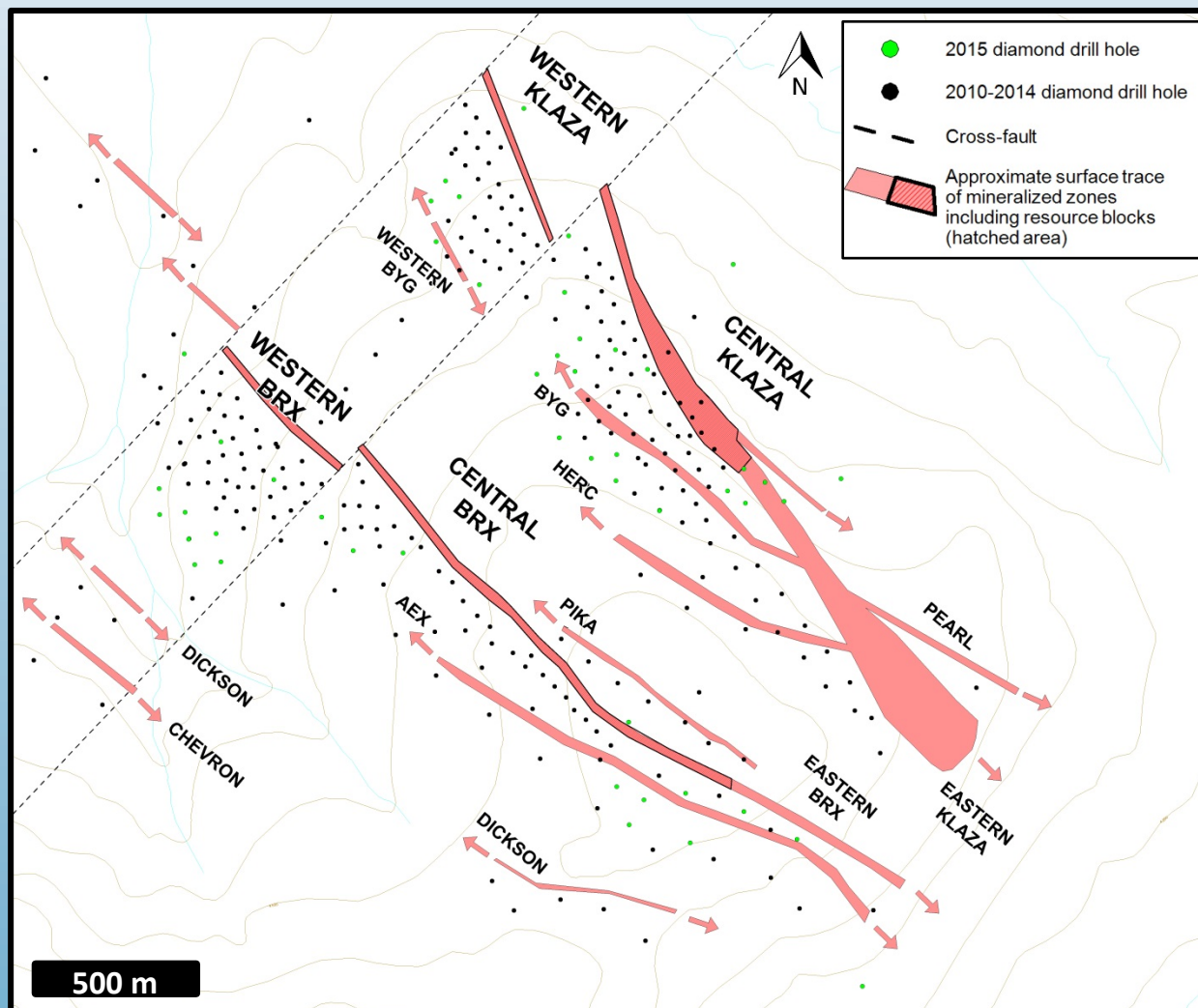
# Developed Area with Excellent Infrastructure



# 2010-2015 Exploration

>70,000 m of Diamond Drilling in 295 Holes

- 70,000 m of drilling in 295 holes completed to date
- Nine structurally controlled zones with:
  - Good continuity
  - Mineralization traced from surface
  - Open ended strike lengths ranging between 250 and 2,400 m
- Only two of the nine main zones are included in the mineral resource
- Large mineralizing system - main mineralized corridor 1,800 m x 2,400 m

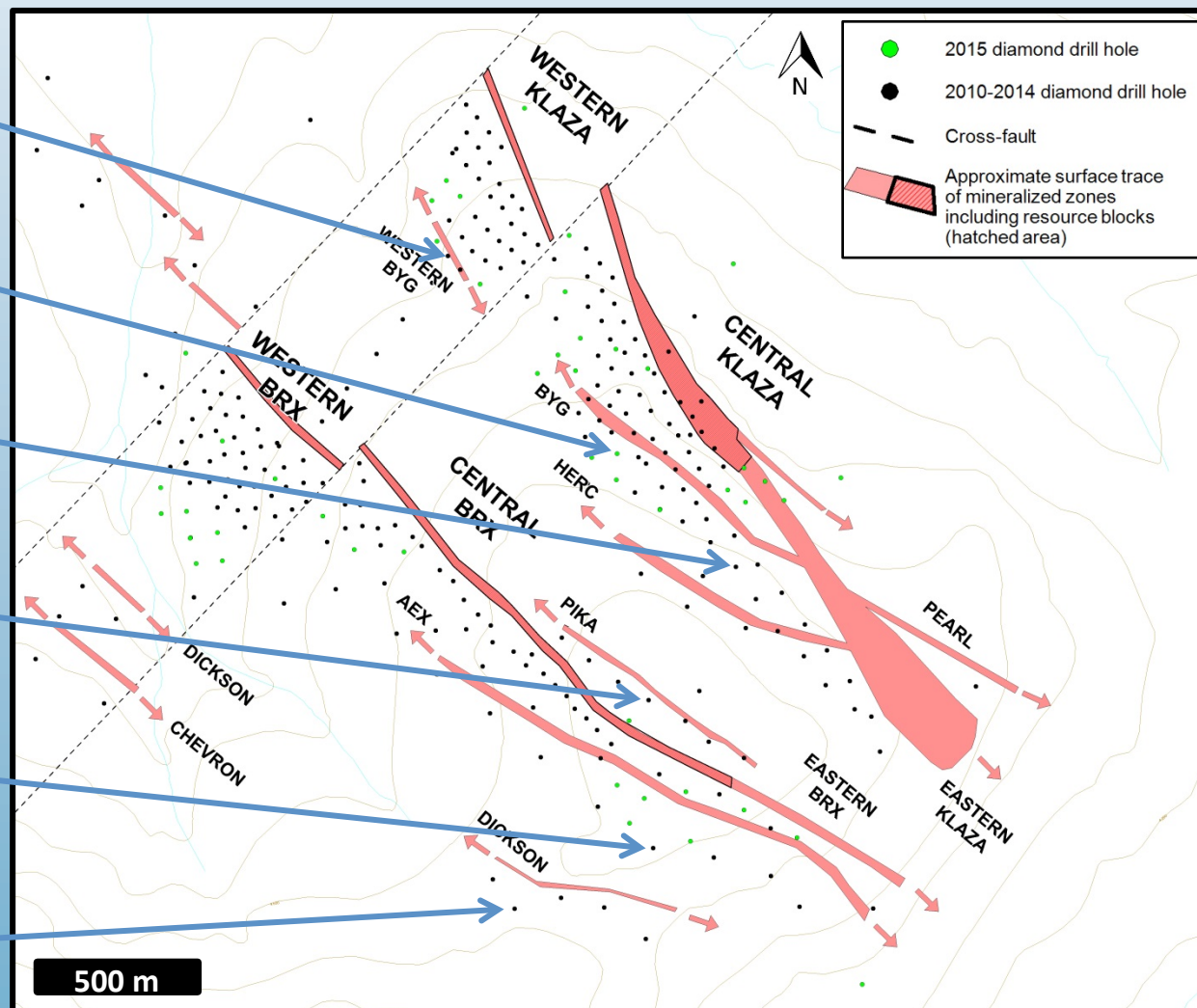




# 2010-2015 Exploration

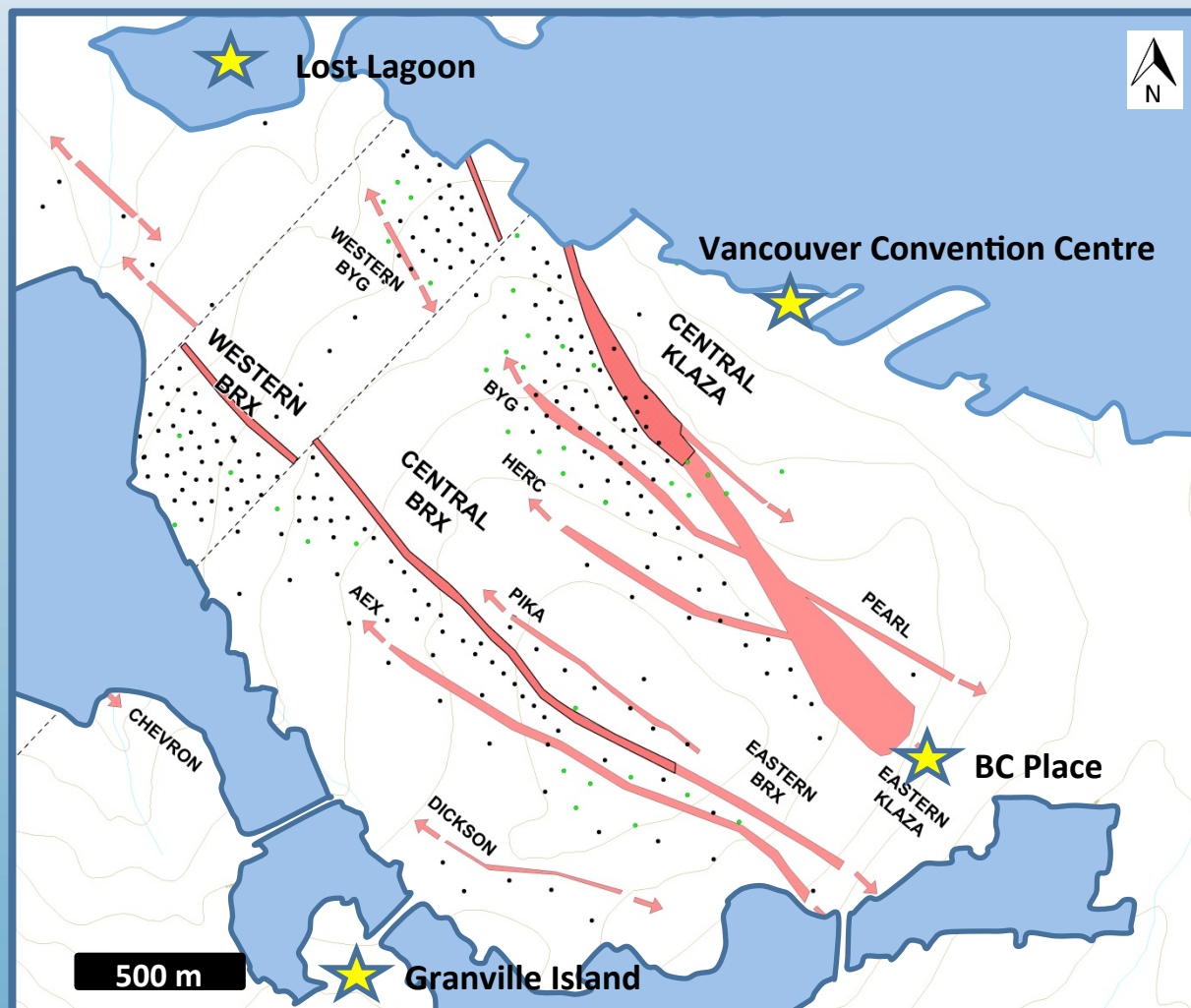
>70,000 m of Diamond Drilling in 295 Holes

- **Western BYG Zone**  
11.22 g/t gold over 1.68 m
- **Central BYG Zone**  
5.51 g/t gold over 2.95 m
- **Eastern Klaza Zone**  
34.10 g/t gold over 1.00 m
- **Pika Zone**  
32.52 g/t gold over 3.36 m
- **AEX Zone**  
9.03 g/t gold over 1.00 m
- **Dickson Zone**  
7.08 g/t gold over 1.00 m



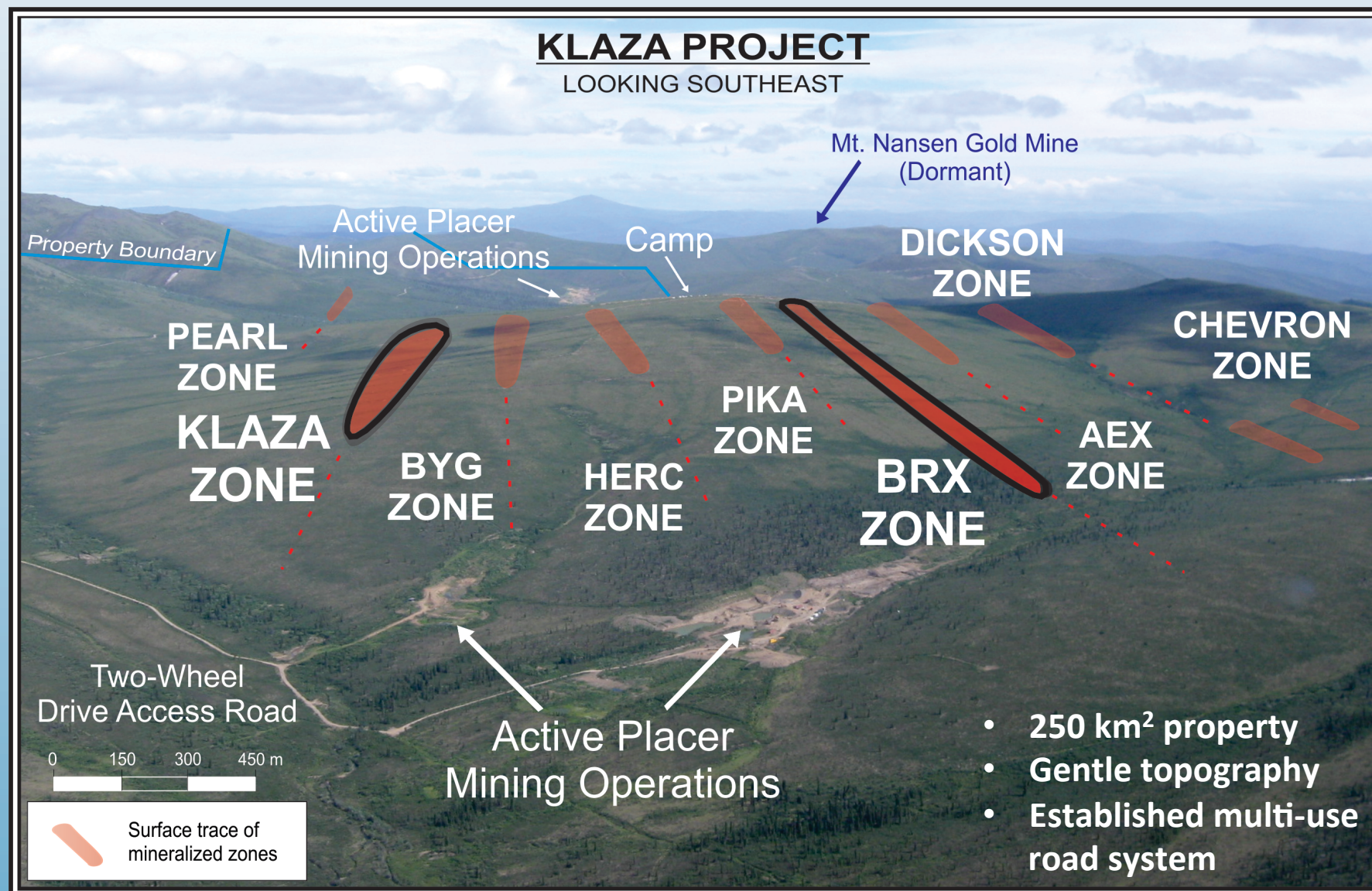
# Large Scale Project

- 70,000 m of drilling in 295 holes completed to date
- Nine structurally controlled zones with:
  - Good continuity
  - Mineralization traced from surface
  - Open ended strike lengths ranging between 250 and 2,400 m
- Only two of the nine main zones are included in the mineral resource
- Large mineralizing system - main mineralized corridor 1,800 m x 2,400 m





# Nine Mineralized Zones Identified



# January 2015

## Maiden Resource Announcement

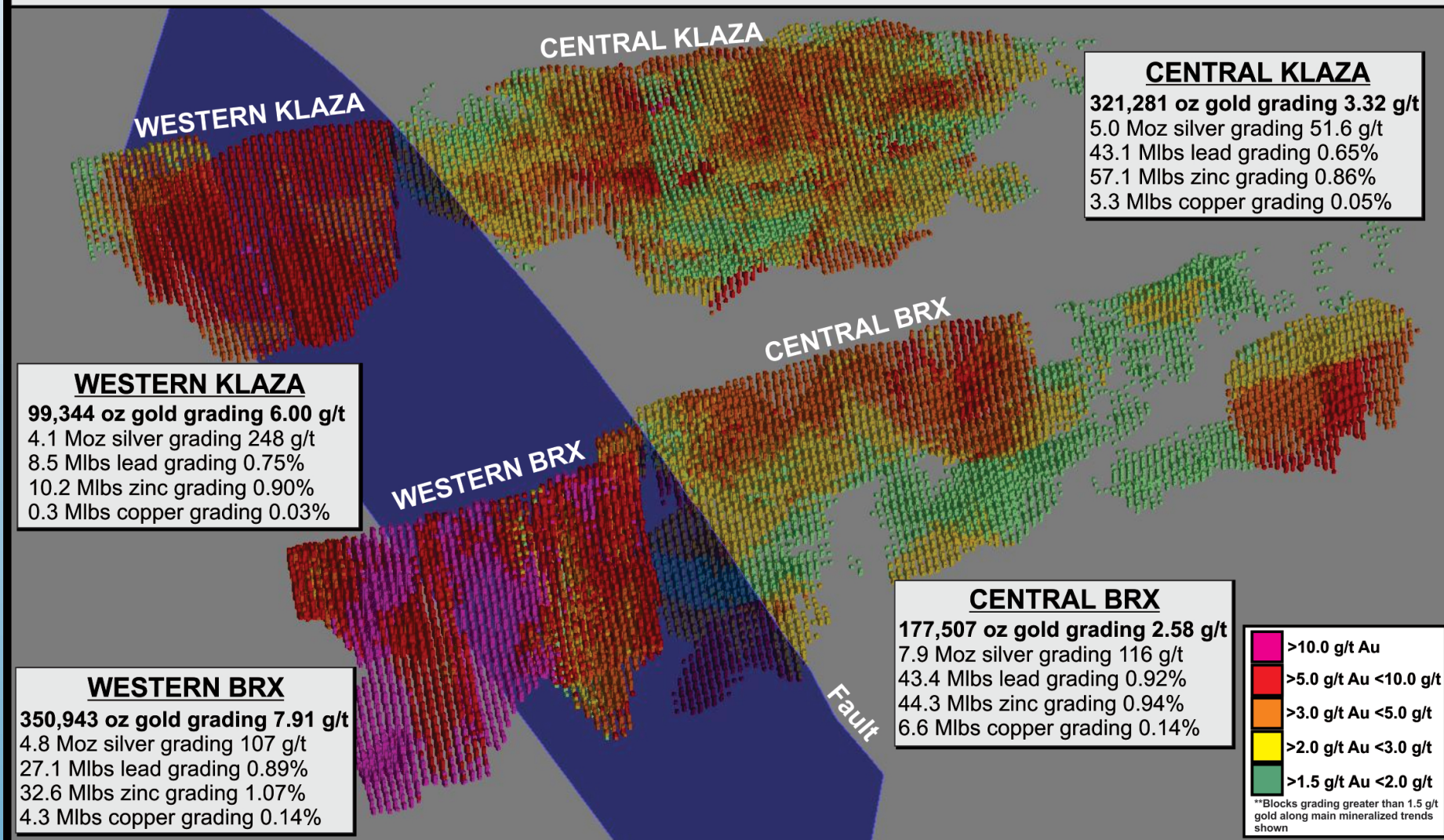
### Klaza Property - Total Inferred Resource Estimate Summary at Varying Gold Cut-off Grades

Au Cut-off (g/t)	Tonnes > Cut-off (t)	Grade > Cut-off					Contained Metal				
		Au (g/t)	Ag (g/t)	Pb (%)	Zn (%)	Cu (%)	Au (oz)	Ag (oz)	Pb (lb)	Zn (lb)	Cu (lb)
1.00	9,060,000	3.54	84.78	0.69	0.84	0.09	1,031,128	24,694,634	137,819,615	167,780,400	17,976,471
<b>1.50</b>	<b>7,040,000</b>	<b>4.19</b>	<b>96.23</b>	<b>0.78</b>	<b>0.93</b>	<b>0.09</b>	<b>948,348</b>	<b>21,780,313</b>	<b>121,060,093</b>	<b>144,340,881</b>	<b>13,968,472</b>
2.00	5,620,000	4.81	104.64	0.83	0.97	0.10	869,085	18,906,669	102,836,705	120,182,655	12,389,964
2.50	4,610,000	5.38	113.31	0.88	1.01	0.10	797,378	16,793,845	89,437,024	102,649,312	10,163,298
<b>3.00</b>	<b>3,830,000</b>	<b>5.91</b>	<b>120.54</b>	<b>0.90</b>	<b>1.02</b>	<b>0.11</b>	<b>727,725</b>	<b>14,842,633</b>	<b>75,993,251</b>	<b>86,125,685</b>	<b>9,288,064</b>
4.00	2,420,000	7.40	143.73	1.02	1.12	0.13	575,742	11,182,625	54,418,840	59,754,020	6,935,735
5.00	1,750,000	8.52	155.43	1.04	1.15	0.14	479,357	8,744,880	40,124,084	44,367,978	5,401,319

- Additional information about the Klaza property mineral resource estimation can be found in Rockhaven's June 19, 2015 amended technical report titled "Geology, Mineralization, Geochemical Surveys, Geophysical Surveys, Diamond and Percussion Drilling, Metallurgical Testing and Mineral Resources on the Klaza Property, Yukon, Canada" which can be viewed at [www.sedar.com](http://www.sedar.com) under the Rockhaven profile or on the Rockhaven website at [www.rockhavenresources.com](http://www.rockhavenresources.com)



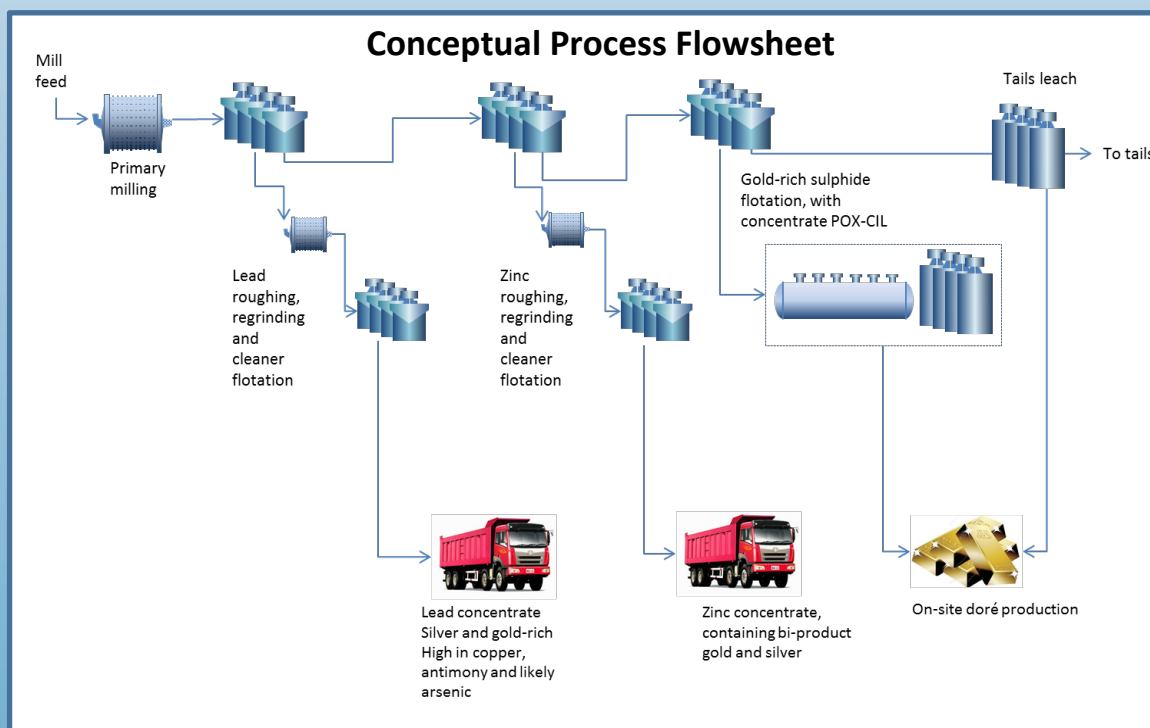
## KLAZA PROPERTY - GOLD RESOURCE BLOCK MODEL



# Positive Metallurgical Results

Based on lock-cycle testing, it is projected that:

- 95.0% Combined gold recovery with 65% of the recovered gold produced as dore
- 90.8% Combined silver recovery to high-value base metal concentrates or dore
- High recoveries with the same flowsheet on all tested zones\* as well as a blended composite
- Concentrate marketing studies have commenced



## Project-Wide Composite Results

Product	Assays			
	Au (g/t)	Ag (g/t)	Pb (%)	Zn (%)
Lead concentrate	106.4	4092.8	49.2	3.9
Zinc concentrate	16.9	1379.3	2.0	47.5
Product	% Distribution			
	Au	Ag	Pb	Zn
Lead concentrate	26.1	54.3	84.6	4.1
Zinc concentrate	7.5	33.2	6.3	91.2
POX-CIL gold extraction* (doré)	58.9	0.8		
Tails leach (doré)	2.5	2.4		
<b>TOTAL Recovery</b>	<b>95.0</b>	<b>90.8</b>	<b>84.6</b>	<b>91.2</b>

*\*\*POX-CIL gold extraction is from a gold-rich arsenopyrite-pyrite concentrate, totaling 12% of the feed, floated after the lead and zinc concentrates are floated*

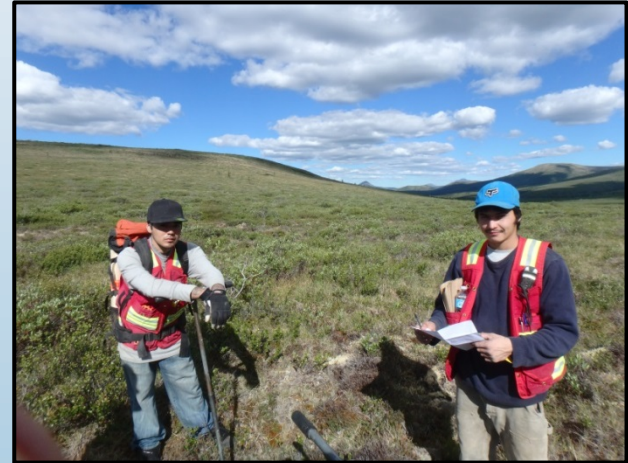
*\*Due to material availability, testing has been conducted on the Western BRX, Western Klaza and Central Klaza Zones only*



# First Nation Consultation and Studies For Permitting Underway



Little Salmon Carmacks First Nation Chief Eric Fairclough with  
Rockhaven CEO Matt Turner at Exploration Benefits  
Agreement Signing Ceremony August 2015



First Nation and local hiring is a priority  
for Rockhaven



Baseline surficial and groundwater studies,  
wildlife, aquatic and heritage ongoing

# Favourable Carbonate Base Metal (CBM) Model

## Diagnostic Features Include:

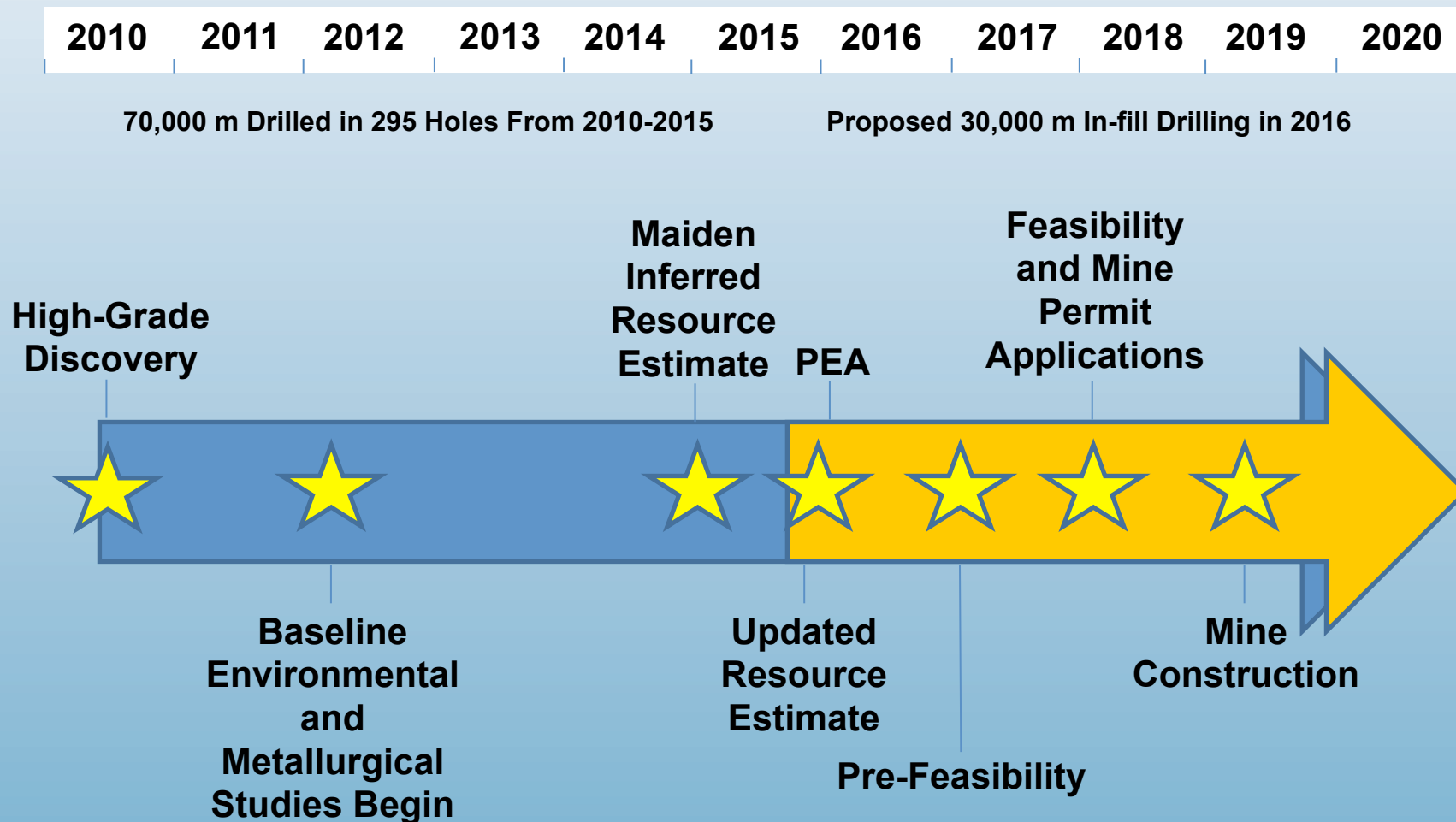
- Large vertical extent of mineralization (>1000 m)
- Multiple mineralized structures with large strike lengths (>700 m)
- Bonanza grade and well liberated gold mineralization
- Examples include Porgera (New Guinea), Buritica (Colombia) and Kelian (Indonesia)

Porgera Mine – Barrick Gold Corporation and Zijin Mining Group Co.





# Critical Path to Production



\*This figure includes forward looking statements and plans which may be subject to change

- ✓ **100% Owned Klaza Project**
- ✓ **Road Accessible in Established Mining Camp**
- ✓ **Safe Mining Jurisdiction**
- ✓ **Aggressive Resource Expansion in 2015**
- ✓ **Strong First Nations and Local Support**
- ✓ **Growing Insider Ownership - Now Over 60%**
- ✓ **Multiple Zones / Exceptional Strike Lengths**
- ✓ **Positive Metallurgy**
- ✓ **On the Critical Path to Production**



#### Contact Information

**Rockhaven Resources Ltd.**

1016-510 West Hastings Street

Vancouver, BC, V6B 1L8

Phone: 604-687-2522

Toll Free: 1-888-688-2522

E-mail: [info@nordacres.com](mailto:info@nordacres.com)

Web: [www.rockhavenresources.com](http://www.rockhavenresources.com)



# Questions?

