



Sabina Gold & Silver Corp.

A Gold Miner in the Making

Zurich – Precious Metals Summit November 2014

Forward Looking Statements

Statements relating to future studies and operations at the Back River project and the Hackett River project and the expected results of this work are forward-looking information within the meaning of securities legislation of certain Provinces in Canada. Forward-looking information are statements that are not historical facts and are generally, but not always, identified by the words “expects,” “plans,” “anticipates,” “believes,” “intends,” “estimates,” “projects,” “potential” and similar expressions, or that events or conditions “will,” “would,” “may,” “could” or “should” occur. Information inferred from the interpretation of drilling results may also be deemed to be forward-looking information, as it constitutes a prediction of what might be found to be present when and if a project is actually developed. This forward-looking information is subject to a variety of risks and uncertainties which could cause actual events or results to differ materially from those reflected in the forward-looking information, including, without limitation: risks related to fluctuations in metal prices; uncertainties related to raising sufficient financing to fund the planned work in a timely manner and on acceptable terms; changes in planned work resulting from weather, logistical, technical or other factors; the possibility that results of work will not fulfill expectations and realize the perceived potential of the Company’s properties; risk of accidents, equipment breakdowns and labour disputes, access to project funding or other unanticipated difficulties or interruptions; the possibility of cost overruns or unanticipated expenses in the work program; the risk of environmental contamination or damage resulting from Sabina’s operations and other risks and uncertainties, including those described in Sabina’s Annual Report for the year ended December 31, 2013.

Forward-looking information is based on the beliefs, estimates and opinions of Sabina’s management on the date the statements are made. Sabina undertakes no obligation to update the forward-looking information should management’s beliefs, estimates or opinions, or other factors, change, except as required by applicable law.

Key Investment Highlights

3



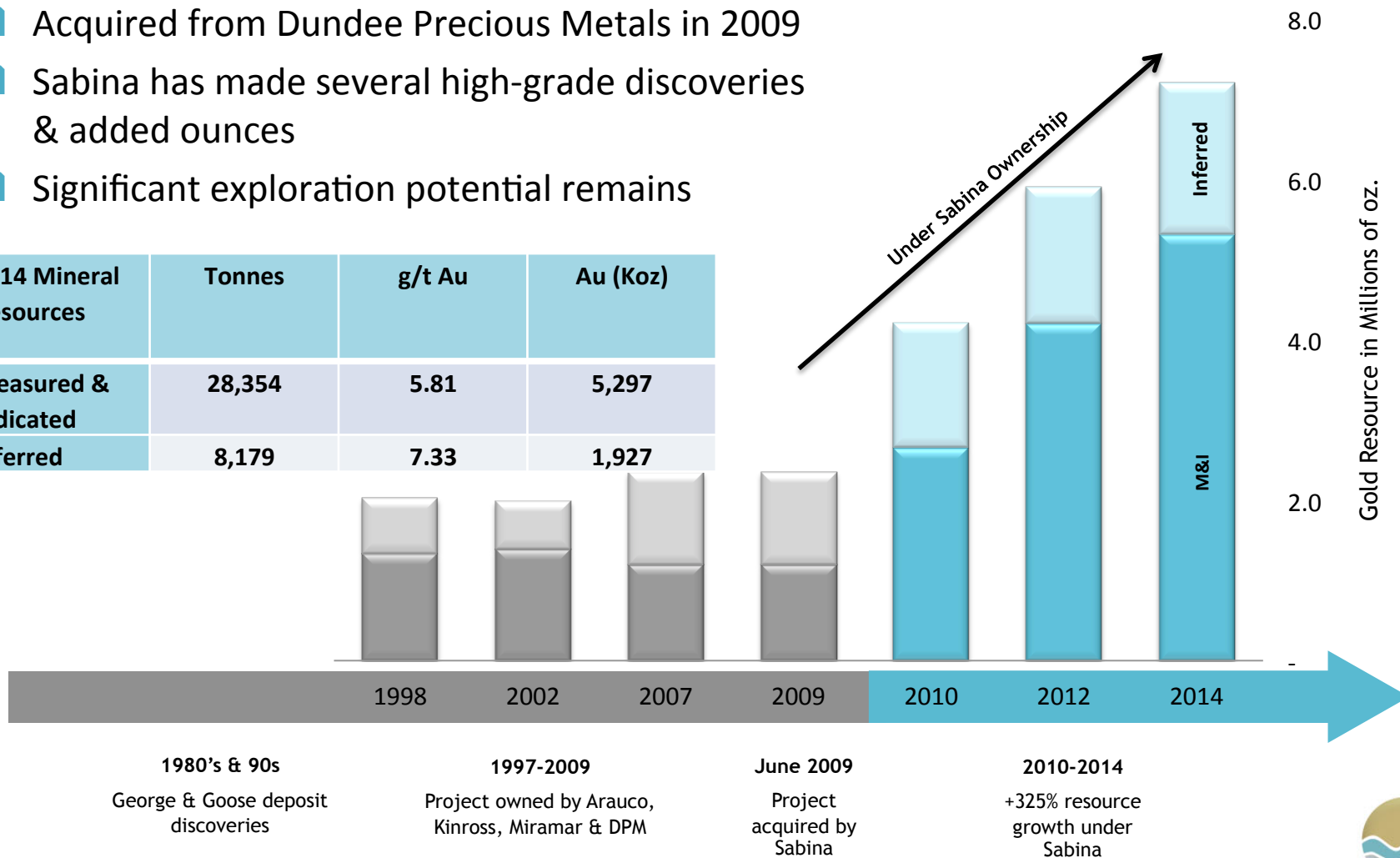
- ❑ Large advanced-stage, high quality, high-grade gold project at Back River, currently in feasibility and permitting
- ❑ Low geopolitical risk – Nunavut, Canada
- ❑ Excellent exploration potential
- ❑ Expert Board and management team
- ❑ \$30m in treasury forecast at December 31, 2014

Back River – History

4

- Acquired from Dundee Precious Metals in 2009
- Sabina has made several high-grade discoveries & added ounces
- Significant exploration potential remains

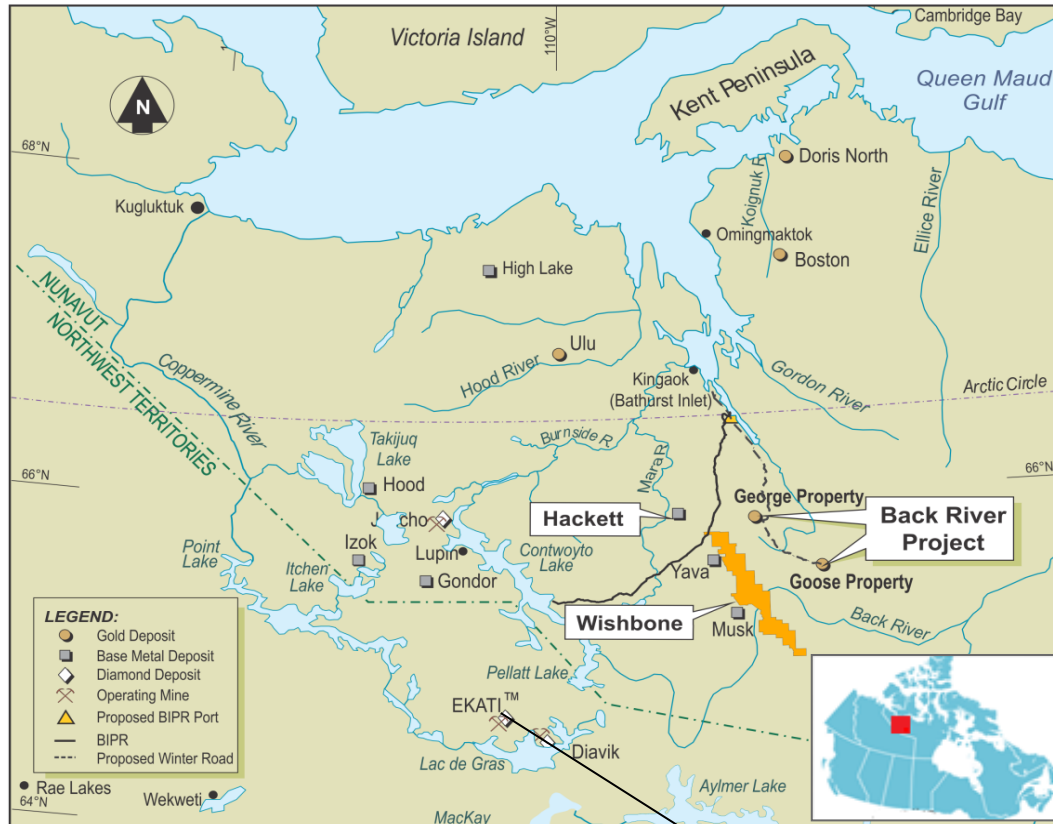
2014 Mineral Resources	Tonnes	g/t Au	Au (Koz)
Measured & Indicated	28,354	5.81	5,297
Inferred	8,179	7.33	1,927



*See mineral resources estimate slide 8 for details

Canadian North

5



- Responsible resource development a priority for local & federal gov'ts
- Nunavut rich in natural resources.
- Numerous active successful northern mining projects

- Agnico Eagle Meadowbank mine Q1 produced 156k oz Au at \$434/oz ¹
- TMAC Resources raised \$78 million for Hope Bay ²

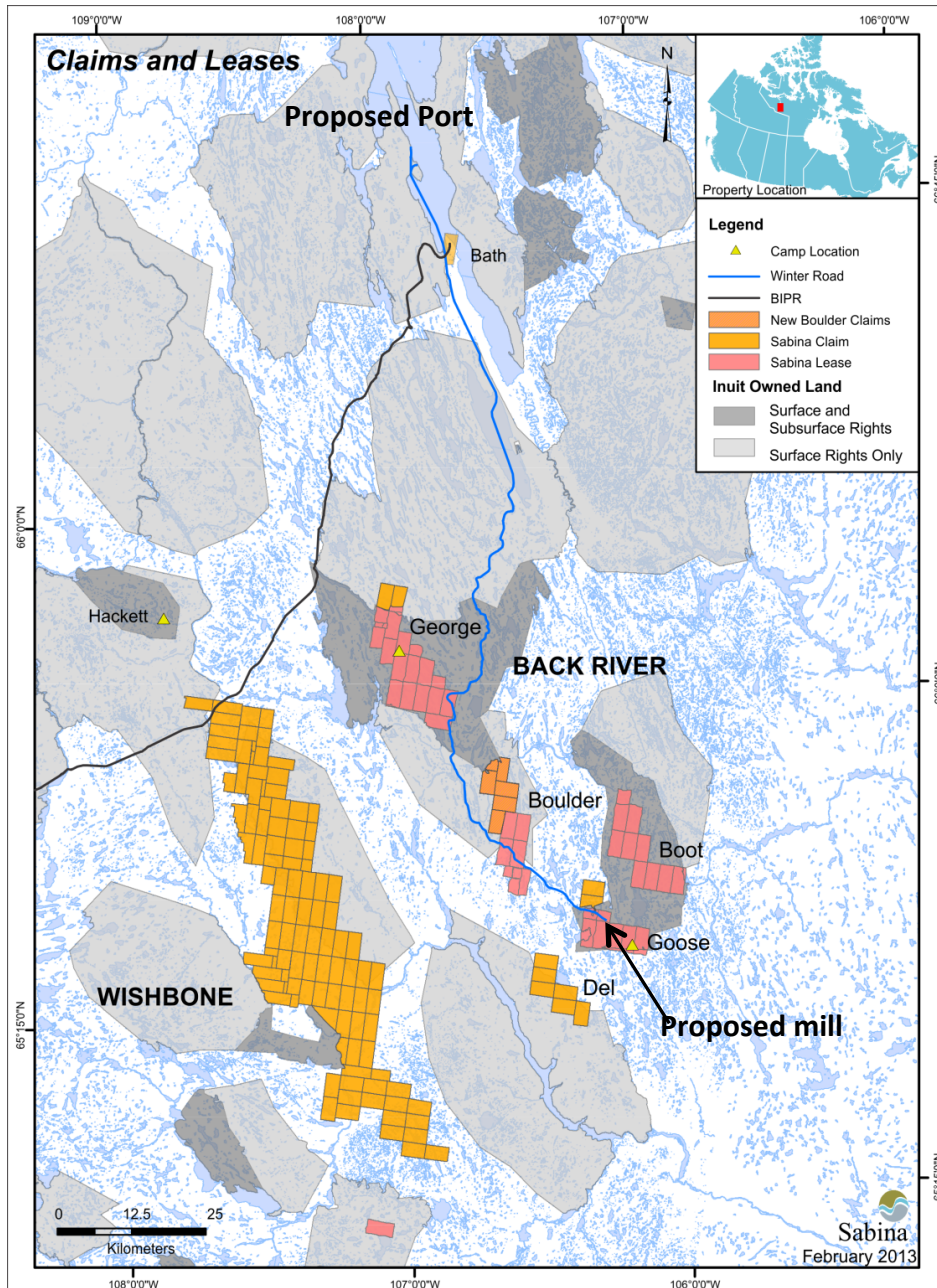
1. Retrieved from Agnico Eagle website 2. Retrieved from TMAC Resources website



Ekati Mine, NWT

Regional Setting

6



- ❑ Summer sealift landing at Bathurst Inlet. Access by air for employees and dore shipment
- ❑ Winter road to site (generally used in the north and less expensive and easier to permit)
- ❑ Further opportunities for supplying operations being assessed
- ❑ Existing plans on George and Goose Properties only; many years of exploration on other Back River and Wishbone claims

Back River – Pre-Feasibility Study Oct/13

7

PFS - Base Case:

- ☐ Cash cost C\$685/Oz
- ☐ 5,000 tpd open-pit & underground
- ☐ ~287 koz/year for 8.4 years
- ☐ \$290 M after-tax NPV
- ☐ 16.5% IRR & 3.3 year payback

Opportunities for FS:

- ☐ *Improve recovery* →
- ☐ *Extend Mine Life* →
- ☐ Other capital and operating improvements
- ☐ Mine plan costs and scheduling

PFS Results -US\$1,350/oz Gold/ 0.95 CD/US Exchange		
Pre-Tax NPV(5%) & IRR	\$M / %	\$471 / 21.8%
After-Tax	\$M / %	\$290 / 16.5%
Payback	Years	3.3
Mill Throughput	tpd	5,000
Avg. Grade Processed	diluted g/t Au	5.69g/t
Gold Recovery	%	88%
Mine Life	Years	8.4
Avg. Production	oz/year	287,000
On-Site Op. Costs	\$/t milled	\$101
Avg. Total Cash Cost	\$/oz	\$685
Pre-Production Capital	\$M	\$605
Ongoing/Sustaining Capital	\$M	\$226

For the open pit Mineral Reserve estimate, a 1.52 g/t COG was used for the Goose deposits and a 2.00 g/t COG was used for the George deposits. A COG of 6.00 g/t was used for the underground Mineral Reserve estimate, based on an operating cost estimate of \$231.30/t. A gold price of US\$1,250/ troy ounce is assumed. Mineral reserves are based on Measured and Indicated Mineral Resources only. An exchange rate of Cdn\$1.00 to US\$1.00 was assumed. Mineral reserve numbers have been adjusted for dilution and mining recovery. The mineral reserve estimate for the Back River deposits was estimated by Herbert Smith, P. Eng of AMC, a Qualified Person under NI 43-101.

The PFS was prepared under the direction of Tetra Tech by leading independent industry consultants, all Qualified Persons (QP) under National Instrument 43-101. The following consultants and QPs participated in the PFS: John Huang, Ph.D., P. Eng, Hassan Gharffari, P. Eng, Sabry Abdel Hafez, Ph.D., P. Eng, Harvey Wayne Stoyko, P.Eng, all of Tetra Tech, John Morton Shannon, P. Geo, Andrew Fowler, Ph.D.MAusIMM, CP (Geo), Dinara Nussipakynova, P. Geo, Herbert Smith, P.Eng, all of AMC Mining Consultants (Canada) Ltd, Les Galbraith, P. Eng, Knight Piesold and Alistair Kent, P. Eng, Merit Consultants. The Qualified Person under NI 43-101 for Sabina Gold & Silver Corp. is Wes Carson, P.Eng Vice-President, Project Development, who has reviewed the content of this presentation and approved its dissemination. All funds stated in Canadian dollars except where indicated.



Improvements from PFS – Resource & Recoveries

8

Classification	Year	Tonnes (Kt)	Au (g/t)	Metal (Koz Au)	% +/- ounces
Measured	2013*	2,168	4.4	304	479
	2014	10,446	5.2	1,761	
Indicated	2013	21,481	6.2	4,258	-17
	2014	17,907	6.1	3,536	
M & I	2013	23,649	6.0	4,562	16
	2014	28,354	5.8	5,297	
Inferred	2013	7,289	8.0	1,879	3
	2014	8,179	7.3	1,927	

* The results of the 2013 mineral resource estimates can be found in the Technical Report entitled, Back River Gold Property, Nunavut Territory Canada filed on April 2, 2013 on www.sedar.com.

Updated Mineral resource estimate offers potential larger reserve for FS (longer mine life and optimized production schedule)

Mineral Zone	Head Grade (g/t Au)	PFS Estimated Gold Recovery (%)	2014 Estimated Gold Recovery (%)
Llama	6.30	84.4	95.1
Umwelt Pit	5.65	87.5	94.0
Goose Main	4.47	92.3	92.7
George	4.96	87.3	96.1
Umwelt Underground	8.11	90.3	94.1
Life of Mine	5.69	88.0	93.9

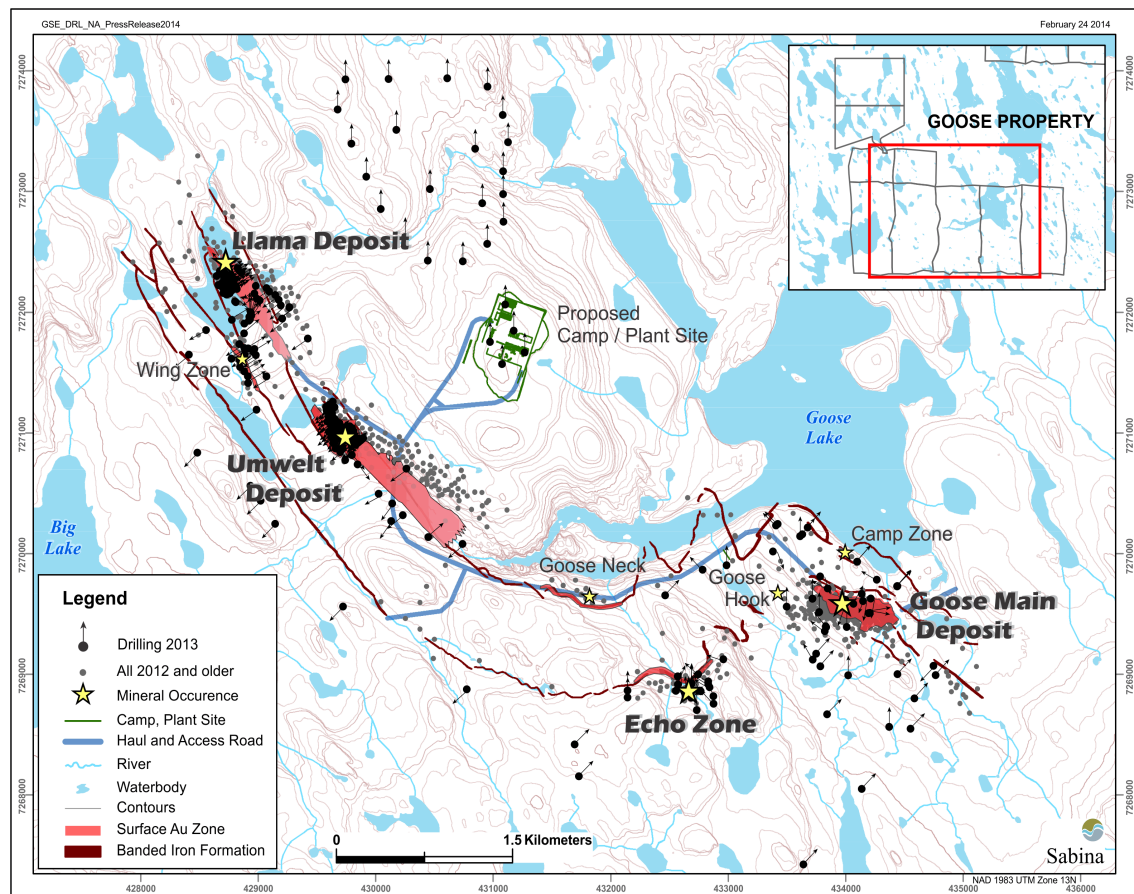
The substantial increase in overall recoveries from 88% to indicated 94% offers additional production

See QP information on slide 9



Back River – Goose Claim Block

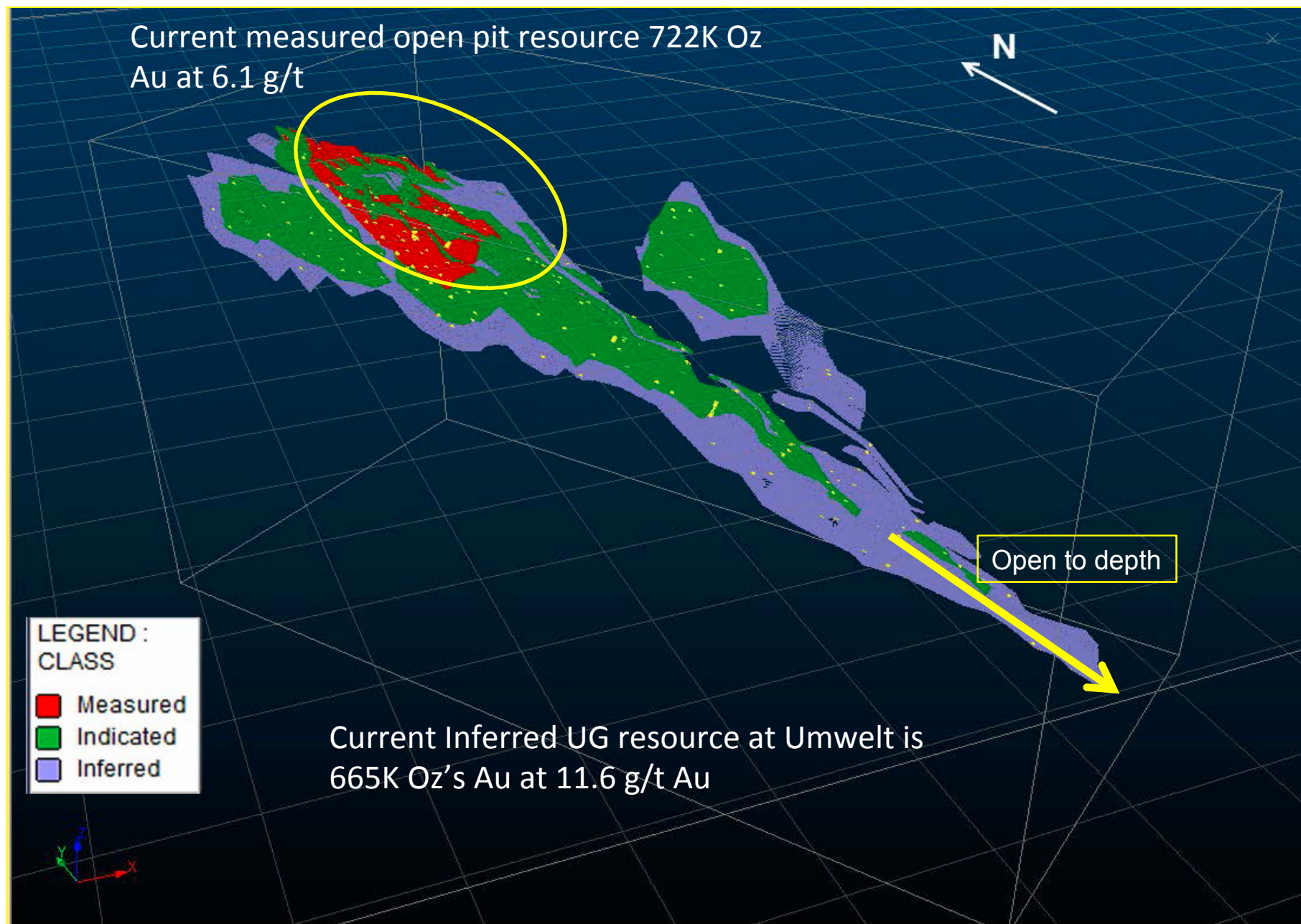
9



- Goose claim block contains 70% of mineral reserves and resources
- Llama, Umwelt, Echo and Goose Main
- Three open pits, four underground
- Mill & related infrastructure to be located near Umwelt deposit
- Satellite open pit mining and underground at George
 - Located 50 km to the northwest of Goose
 - Ore to be trucked to mill via seasonal winter road.

Back River – Expected Upside Umwelt Deposit

10



Key Mile Stones

11

2H 2014

- ✓ Launch Feasibility
 - ☐ Complete technical review of draft EIS
-

*Y/E 2014 Cash
Balance forecast
\$30 million**

1H 2015

- ☐ Complete Feasibility
- ☐ Complete/ File EIS

2H 2015

- ☐ Complete environmental assessment
-

*Y/E 2015 Cash
Balance forecast
~\$20 million**

1H 2016

- ☐ Receive project certificate
- ☐ Begin water licence application

*Additional Funding
needed**

2H 2016

- ☐ Construction to begin after all permits received in late 2016 with first gold pour anticipated late 2018

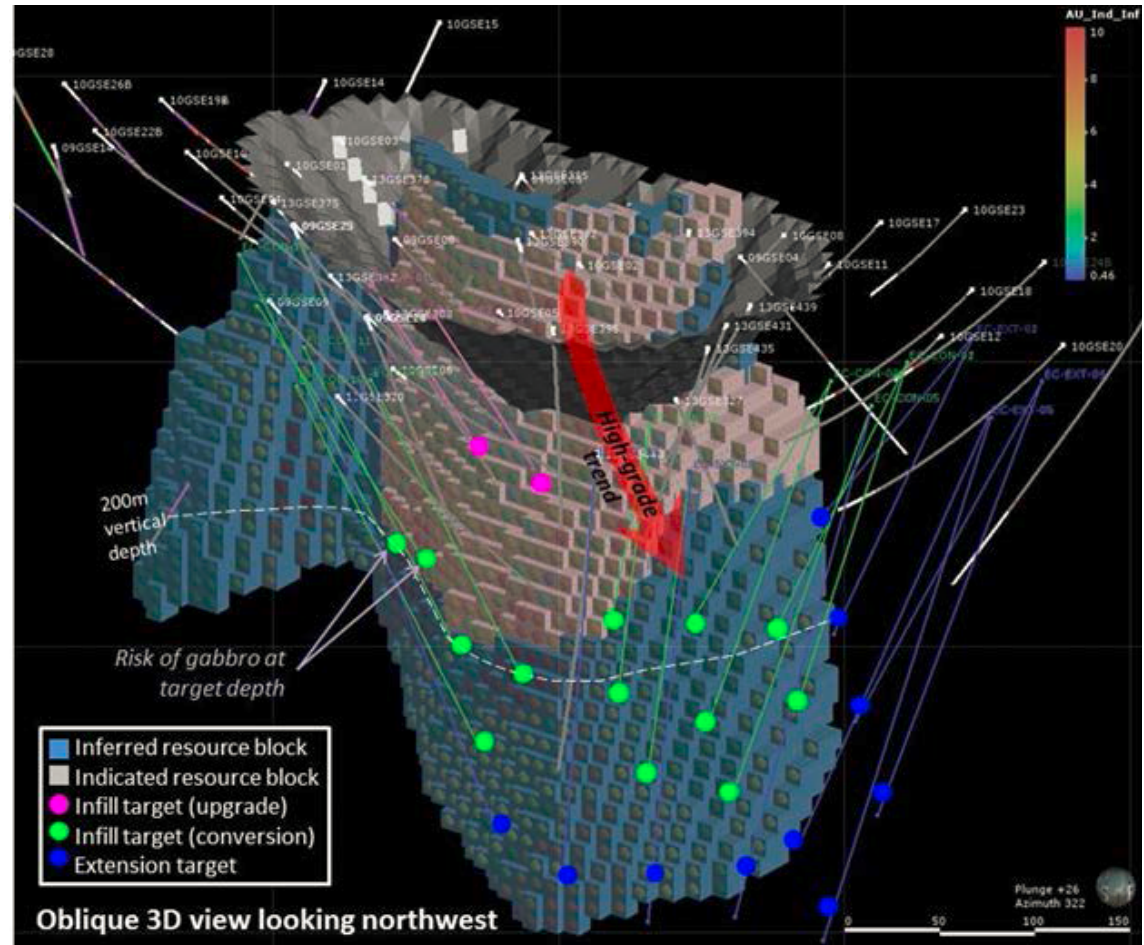
** Based on current plans and projections*



Back River – 2014 Work Program

12

- ❑ 8,500 meters completed at Echo targeting upgrade and expansion of resource
- ❑ Drill testing of two or three regional targets on Goose Property close to existing deposits
- ❑ Continued baseline and environmental field work to support final EIS in 1H 2015.
- ❑ Launched FS in 2H 2014 for completion in 1H 2015



Hackett Silver Royalty– Glencore Activities

13

Silver royalty comprises 22.5% of first 190 M ounces Ag produced; 12.5% of all Ag produced thereafter

- ❑ 45km west of Back River, one of world's largest undeveloped VMS deposits
- ❑ Sabina mineral resource estimate:

Indicated resources of 25million tonnes at 4.2% Zn and 130 g/t Ag
Inferred resources of 57 million tonnes at 3% Zn and 100 g/t Ag.

Glencore...

- ❑ Evaluating Hackett for potential growth opportunity
- ❑ Zinc a strategic commodity

The updated mineral resource estimate was originally prepared by Glencore (previously Xstrata) under the JORC code and was reported by Glencore on May 3, 2013 in its annual report of mineral resources and reserves as at December, 31, 2012. Glencore's updated mineral resource estimate has been reviewed by Sabina and is stated in the Report iSabina Gold & Silver Corp. Hackett River Property Royalty NI 43-101 Technical Report, Nunavut, Canada in accordance with NI 43-101 thus conforming to CIM Definition Standards.

Corporate Summary

14

Sabina Gold & Silver Corp.	Symbol: SBB
Listed exchange	TSX
Market cap.	~\$80 million
Shares outstanding	194 million
Shares outstanding (diluted)	204 million
Cash Balance YE 2013	\$58 million
Debt	None
52 week trading range	\$0.55 -\$2.88
Recent Price	\$0.50

Analyst Coverage	
BMO Capital Markets	Andrew Kaip
Desjardins Securities	TBD
Dundee Securities	TBD
Paradigm Capital	Don MacLean
Cormark Securities	Tyron Breytenbach
RBC Capital Markets	Jamie Kasprovicz
Salman Partners	Kevin MacKenzie

Major Shareholders	Holdings (I&O)
Dundee Precious Metals	12.13%
Van Eck (incl. ETF funds)	16.05%
Dundee/Goodman	9.14%
Silver Wheaton	6.0%
Management (options included)	2.0%



Management & Board

15

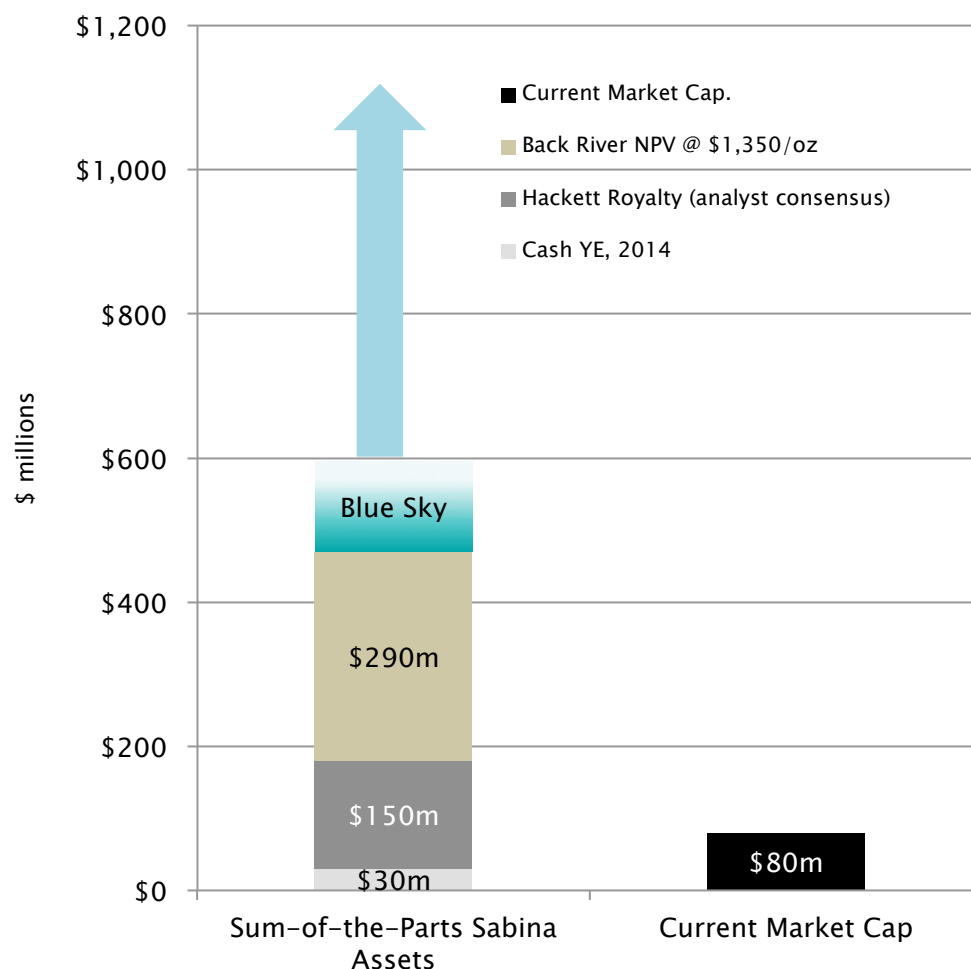
Executive Management	Board of Directors
Rob Pease, President, CEO & Director	Rob Pease (Pres. & CEO)
Elaine Bennett, VP Finance & CFO	Roy Wilkes (Chairman)
Nicole Hoeller, VP Communications & Corp. Secretary	Terry Eyton
	David Fennell
	Jonathan Goodman
Technical Management	Scott B. Hean
Angus Campbell, VP Exploration	James N. Morton
Wes Carson, VP Project Development	John Wakeford (former SVP)
Matthew Pickard, VP, Enviro. & Community Relations	Anthony Walsh (former CEO)
Craig Cornell, Director, HR	John F. Whitton

Exploration, mine development, operations &
capital markets experience



Sabina Value

16



The above graph is an illustration of potential opportunities existing within SBB. There is no guarantee to investors that these values will be realized.

Catalysts

- ✓ Draft EIS filed in Jan 2014
- ✓ Back River resource update March 4, 2014
- ✓ Metallurgical studies to support FS to be completed mid April 2014
- ✓ Initial project financing scoping
- ✓ Echo and exploration drilling results
- ✓ Feasibility Study Launch Q3, 2014 for 1H 2015 completion
- Draft EIS technical Review complete Q3 2014
- Continue evaluation of financing options
- Year end 2014 cash forecast \$30 million
- Year end 2015 cash forecast \$20 million





Mineral Resources that are not mineral reserves do not have demonstrated economic viability. Mineral resource estimates do not account for mineability, selectivity, mining loss and dilution. These mineral resource estimates include inferred mineral resources that are normally considered too speculative geologically to have economic considerations applied to them that would enable them to be categorized as mineral reserves. There is also no certainty that these inferred mineral resources will be converted to measured and indicated categories through further drilling, or into mineral reserves, once economic considerations are applied.

www.sabinagoldsilver.com

Qualified Person:

Angus Campbell, P.Geo, Vice-President, Exploration, and Wes Carson, P.Eng Vice-President, Project Development are qualified persons under national instrument 43-101, and approve the scientific and technical information contained herein: for additional information regarding the Back River Project, see the technical report titled ***Mineral Resource Update for the Back River Gold Property, Nunavut, Canada*** ." filed on www.sedar.com.

Sabina Gold & Silver Corp.

#202 - 930 West 1st Street, North Vancouver, BC V7P 3N4 T: 604.998.4175 | 888.648.4218 F: 604.998.1051