



Eastmain Resources Inc.

2014 Precious Metal Summit
Colorado Presentation

September 2014

Adding Value Through Discovery



75° 48' 52" W 52° 13' 01" N

72° 05' 19" W 52° 18' 01" N

75° 57' 20" W 52° 37' 06" N

*Certain information set forth in this Presentation may contain forward-looking statements that involve substantial known and unknown risks and uncertainties. These forward-looking statements are subject to numerous risks and uncertainties, certain of which are beyond the control of Eastmain, including, but not limited to the impact of general economic conditions, industry conditions, dependence upon regulatory approvals and the availability of financing. Readers are cautioned that the assumptions used in the preparation of such information, although considered reasonable at the time of preparation, may prove to be imprecise and, as such, undue reliance should not be placed on forward-looking statements. Some of my commentary may contain forward-looking information, therefore, you are cautioned that the Corporation's actual results could differ materially from my conclusions, forecasts or projections. I refer you to the section entitled "Risk Factors" in our **Annual Information Form** available on www.SEDAR.com which sets out certain material factors that could cause actual results to differ.*

- ▶ **Eau Claire – High Grade Gold Deposit**
- ▶ **Favourable Jurisdiction (James Bay, Quebec)**
- ▶ **Superior Infrastructure – Power & Road Access**
- ▶ **Exceptional 2013 Drilling & Trenching Results**
- ▶ **100% Ownership – Royalty Free**
- ▶ **Eastmain Mine – 2nd Gold Deposit with New Infrastructure**

Focused on Gold Exploration in Mine-Friendly James Bay, Québec

Company Overview

- **Two High-Grade Gold deposits:**
 - **Eau Claire (1.8M ounces)**
 - **Eastmain Mine (250K ounces)**
- **10 Early Stage Exploration Projects**
- **Eleonore South – Joint with Goldcorp**
- **Favourable Mining Jurisdiction**
- **Mine-ready infrastructure (roads, power)**
- **Quebec’s Plan Nord – new permanent road access for Eastmain Mine**
- **Financial incentives (Quebec rebates)**
- **Goldcorp – shareholder (8.8%)**

Summary Market Statistics

Trading Symbol	TSX:ER
Share Price Range ⁽¹⁾	C\$0.21 – 0.56
Shares Outstanding (Basic)	120.2 M
Options (average price \$0.78)	6.14 M
Warrants (average price \$0.45)	6.77 M
Shares Outstanding (Fully Diluted)	133.1 M
Market Capitalization	C\$42.5 M
Treasury ⁽²⁾	C\$5.1 M

(1) As at close on September 2, 2014

(2) As of July 31, 2014, \$1M Quebec exploration rebate receivable (not included).

Gold Production – Top 10 in the World & Canada

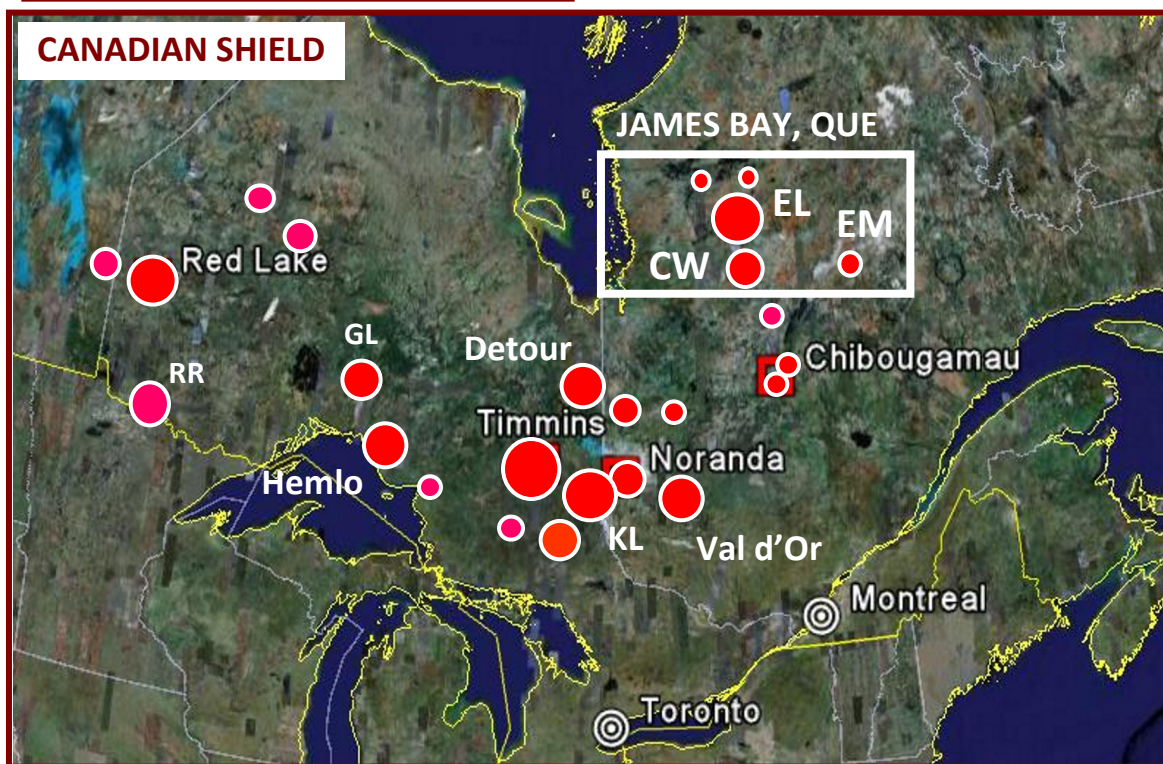


James Bay, Québec – An emerging Mining Camp Gold Mining Camps in the Canadian Shield

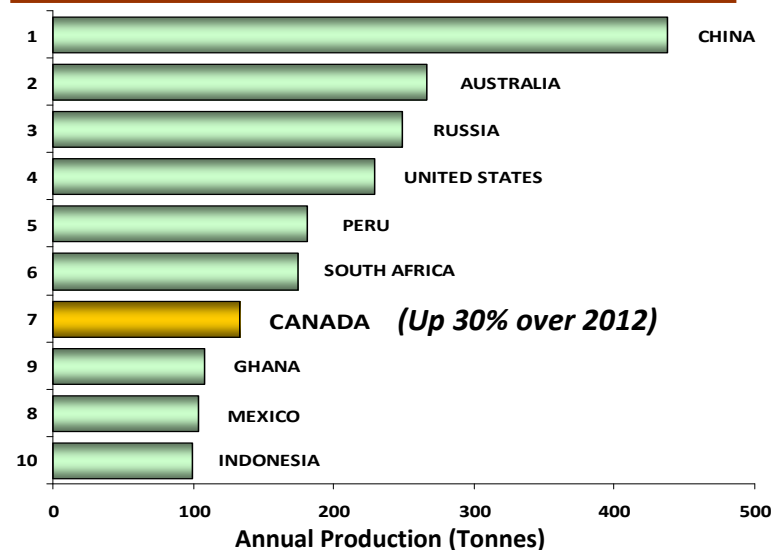


GOLD DEPOSITS

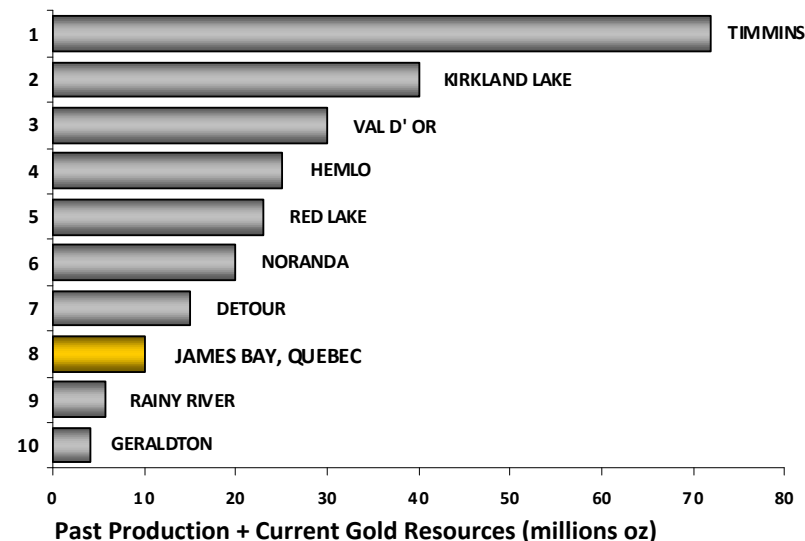
- < 0.3 M OZ
- > 0.3 - 3 M OZ
- > 3 - 5 M OZ
- > 5 - 10 M OZ
- > 10 M OZ



Top 10 Countries (Gold Production)



Top 10 Canadian Gold Camps



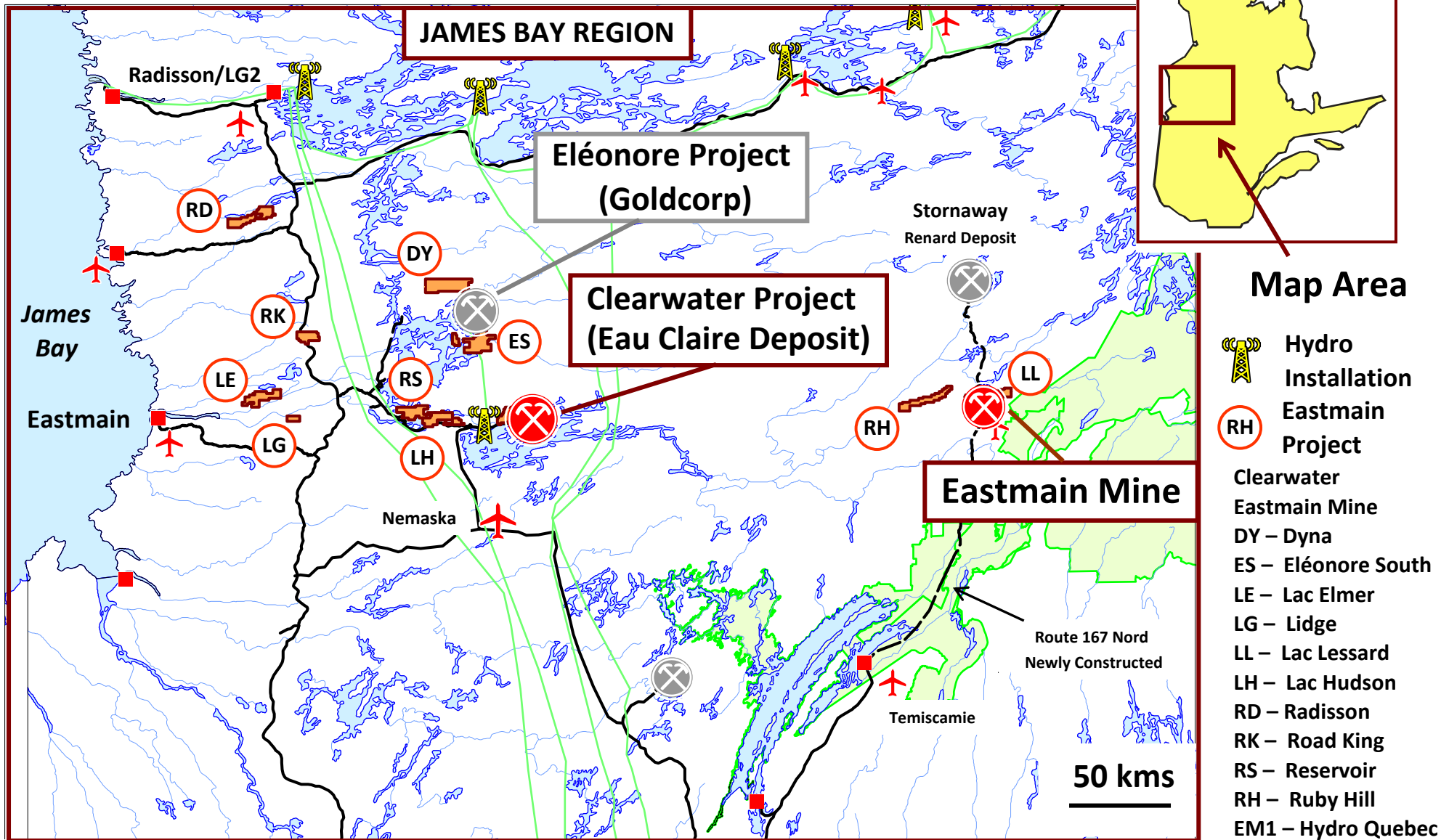
Note: Canada ranks 7th in the World in annual gold production. Over 200 million ounces of gold produced from the Canadian Shield. Most "Mining Camps" are defined by one or more deposits >10 million ounces. James Bay, Quebec ranks in the Top 10 gold camps in the Canadian Shield. CW – Clearwater; EL – Eleonore; EM – Eastmain Mine; GL – Geraldton; KL – Kirkland Lake; RR – Rainy River

James Bay, Québec – Project Location Map



Excellent infrastructure – Roads, power, airports, fuel ...

James Bay – New Mining District



Note: Clearwater is accessible via a commercial airport at Nemaska, located 80 kms south of the project. Route 167 Nord has been constructed from Temiscamie north to the Renard Project, providing permanent road access to the Eastmain Mine project.

Eau Claire Gold Deposit – Accessible via EM-1 road network

Hydro Quebec's – Eastmain 1 Hydroelectric Installation – Aerial View



The Clearwater Project is located next to Hydro Quebec's EM-1 power generating facility with permanent road access in place.

0 5
kms

Note: Hydro Quebec's Eastmain-1 powerhouse was commissioned in 2006. The Eastmain Reservoir covers approximately 600 km² and flows into the Opinaca Reservoir. The Eau Claire Gold deposit is accessible by the permanent EM-1 Road. Fuel and accommodation is available at the EM-1 Base Camp. An equipment and fuel depot is accessible by transport via the Spillway. Hydroelectric power for Goldcorp's Eleonore project is provided by EM-1.

Eau Claire is Higher Grade than 75% of all Gold Deposits Worldwide

Overview

- High-Grade Open Pit & Underground Gold Deposit
- Volcanic-hosted Quartz-Tourmaline vein system
- Free Gold with Te, Bi and Ag By-Products
- Stacked sequence of High-Grade Quartz-Tourmaline veins (average 2.0 m wide)
- Wide gold-bearing intervals (5 to 10 m) of pre-existing gold-bearing rock crosscut by second stage Bonanza-grade “D2 Feeder Veins”
- Deposit & property-scale expansion possible
- Next Milestones: Re-Model Eau Claire Deposit, Block Model Resource Estimate & Future PEA
- Objectives – Outline sufficient gold resources at Eau Claire for a Long-Life, Low-Cost, Highly Profitable Gold Operation



PEOPLE – PROJECTS – PARTNERS

Measured & Indicated Open Pit Grade at 4.67 g/t Au

Resource Summary

	Tonnes (000's)	Au Grade (g/t)	In Situ Gold (oz, uncapped)
Eau Claire - Open Pit ⁽¹⁾			
Measured	2,728	5.12	449,000
Measured & Indicated	4,228	4.67	635,000
Inferred	2,478	2.68	213,000
Eau Claire – Underground ⁽²⁾			
Measured & Indicated	706	6.37	145,000
Inferred	4,035	7.20	935,000
Total Measured & Indicated	4,938	4.91	780,000
Total Inferred	6,513	5.48	1,148,000

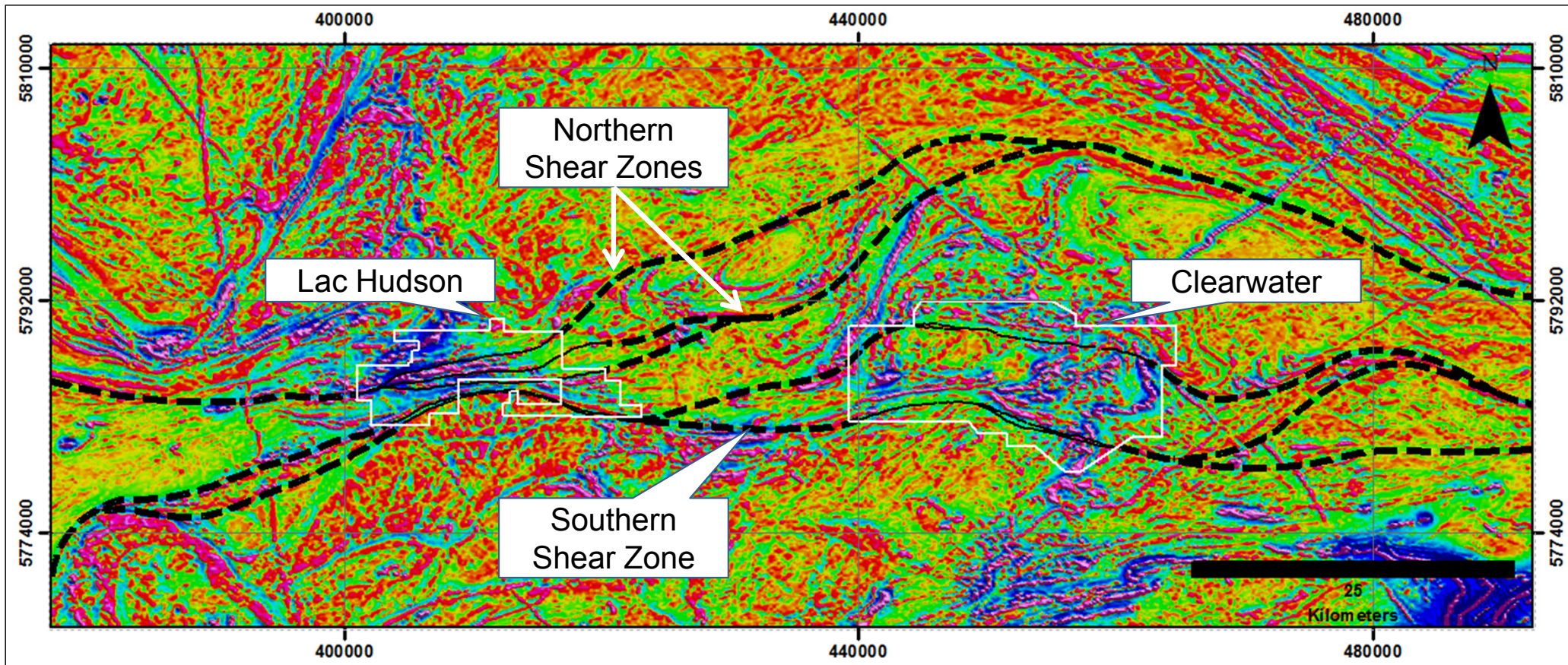
70,000 metres of drilling to be added to a Block Model Resource

(1) Resource estimate includes drilling up to the end of 2011 and was completed by P&E Mining Consultants.

(2) Underground grade based on a 2.5 g/t cut-off grade; Open pit grade using a 0.5 g/t cut-off grade.

Fault Mapping 3 – Regional D₂ Shear Zones

The southern shear zone corridor within the Lac Hudson property defines the westward extension of the southern regional D₂ shear zone interpreted from the regional magnetic data and identified in the Clearwater interpretation (Siddorn and Ravenelle, 2014).

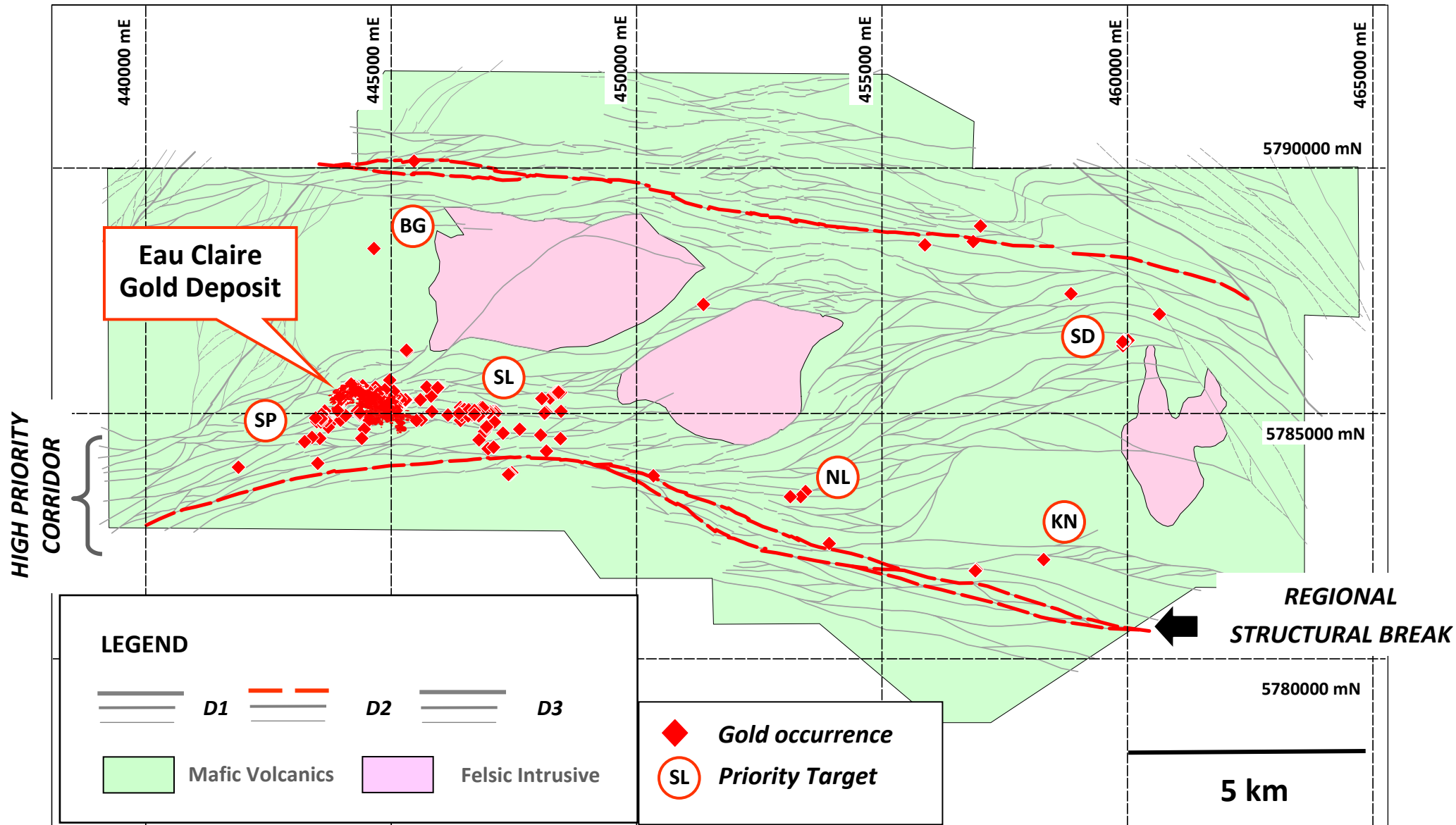


Interpreted regional D₂ shear zones linking major first order shear zones of the Lac Hudson and Clearwater properties, overlain on 1VD data of the aeromagnetic compilation of James Bay (D'Amours 2011).

— First order (major) shear zones interpreted from the Lac Hudson and Clearwater properties
- - - Interpreted regional shear zones

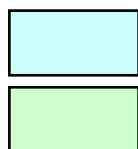
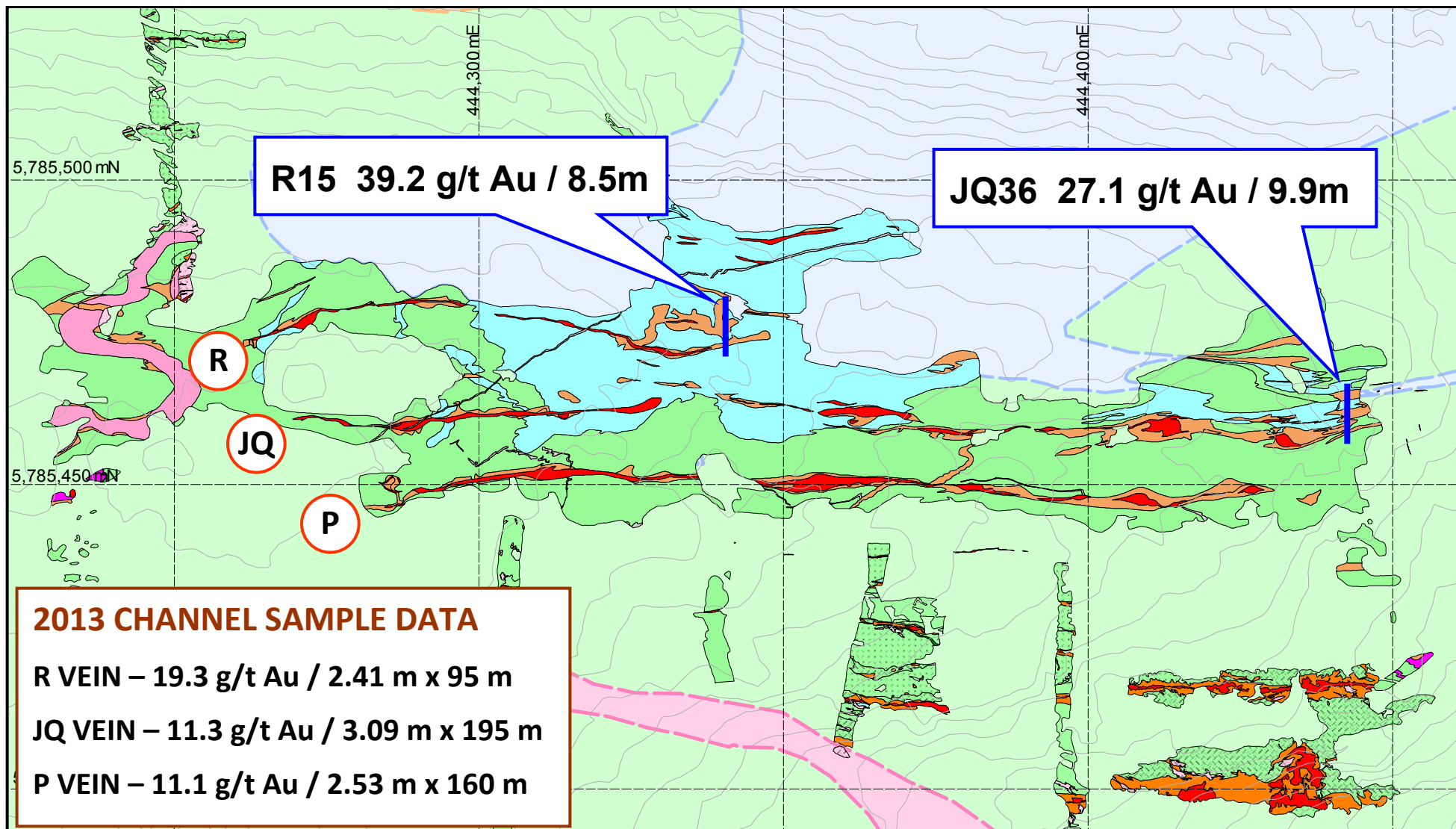
Clearwater – Structural Controls of Gold Mineralization

Eau Claire flanks a Regional Structural Break (D2 structures) extending for >100 kms
Major Gold Deposits throughout the World are found near Deep-Seated Structures



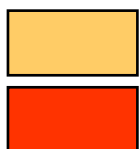
Note: Structural interpretation by SRK based on 2013 Airborne Magnetic Survey Data. Gold mineralization is related to a regional (D2) structural break. Abbreviations: BG – Beluga; KN – Knight; NL – Natel; SD – Serendipity; SL – Snake Lake; SP – Spider; >1000 rock samples ranging from >1 to 500 g/t Au

450 West Surface Geology & 2013 Channel Sample Data



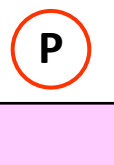
FELSIC Volcaniclastic

MAFIC Volcanic



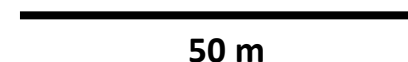
ALTERED Rock

QUARTZ-TOURMALINE Vein



VEIN ID

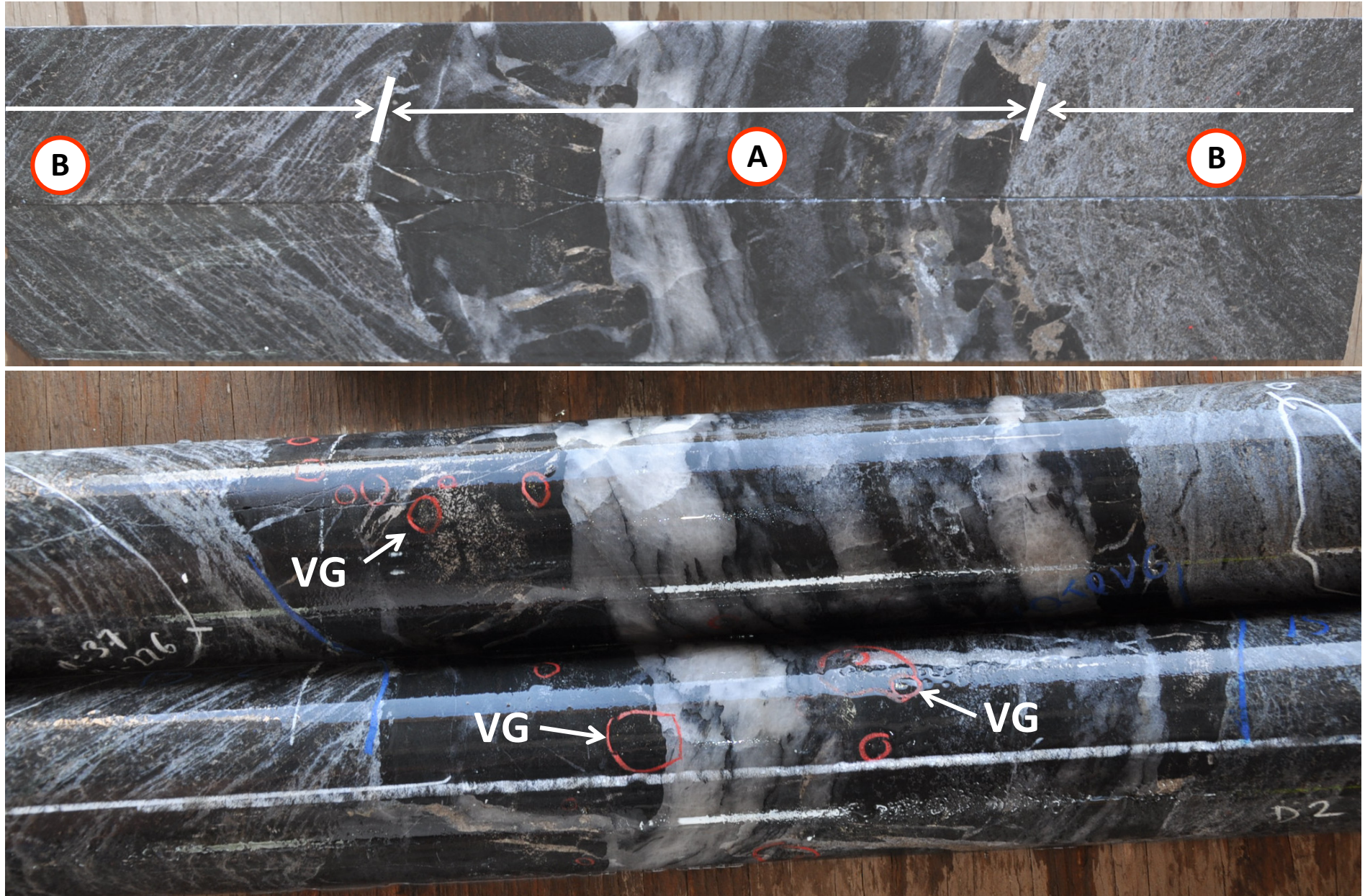
FELSIC Porphyry



50 m

High-Grade Gold “Blow-out” Zones at Eau Claire Deposit

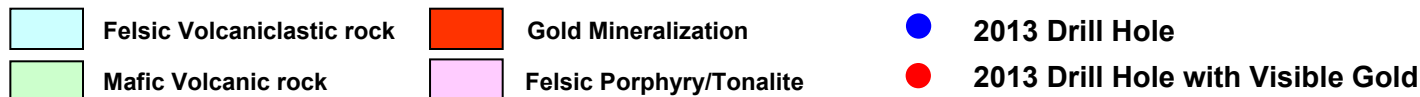
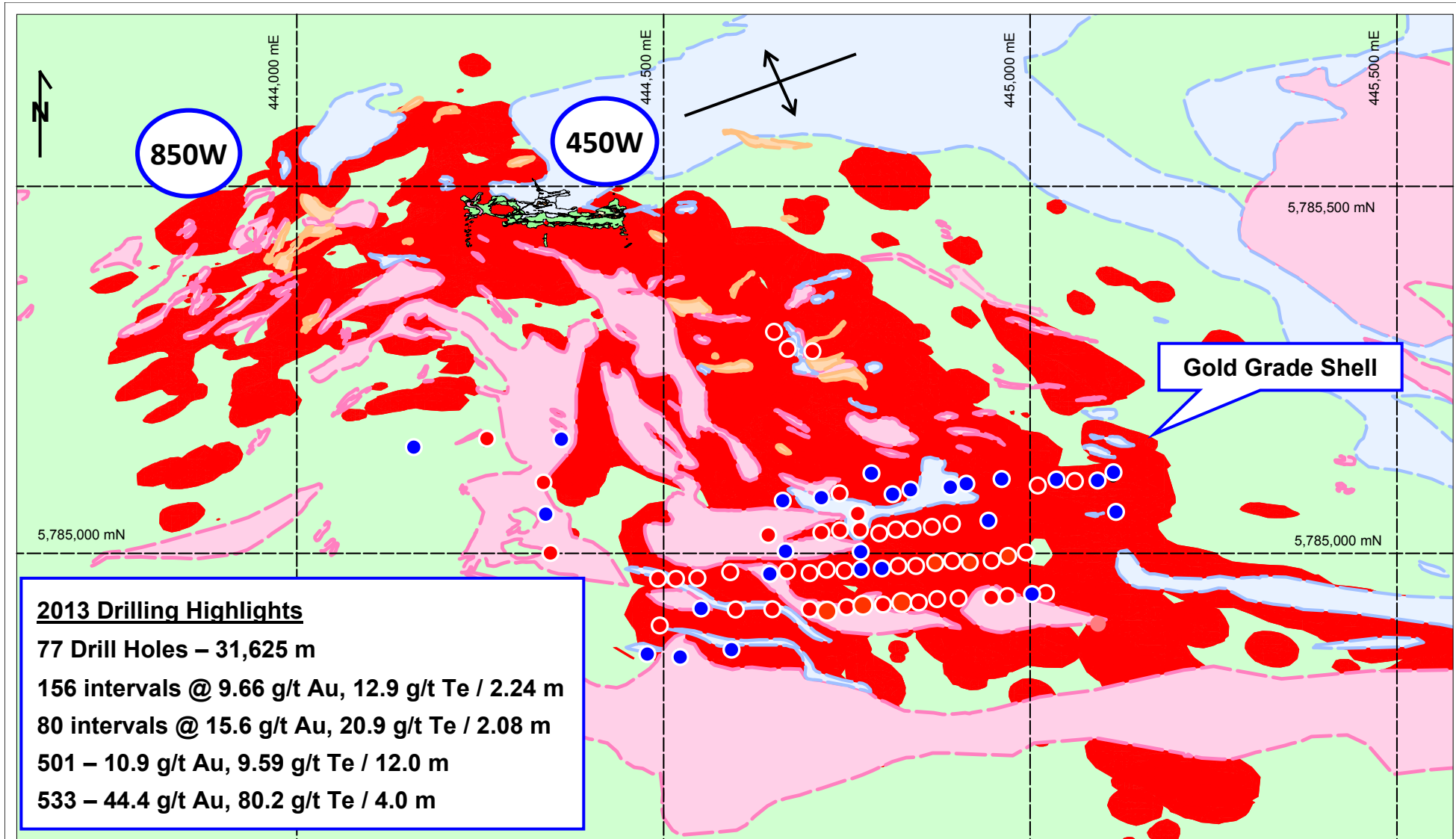
Quartz-Tourmaline “Feeder Vein” cross-cutting gold-bearing altered basalt



Note – Drill hole 303 intersected 10.5 m at 7.79 g/t Au (V12) including 24.9 g/t Au over 2.5m. Photos illustrate a central laminated quartz-tourmaline vein (A) bounded on both sides by a tourmaline-rich replacement zone (B) along the rock foliation. VG – visible gold.

Eau Claire Gold Deposit Geology

Surface Projection of Gold Mineralization, Deposit Geology & 2013 Drill Collars



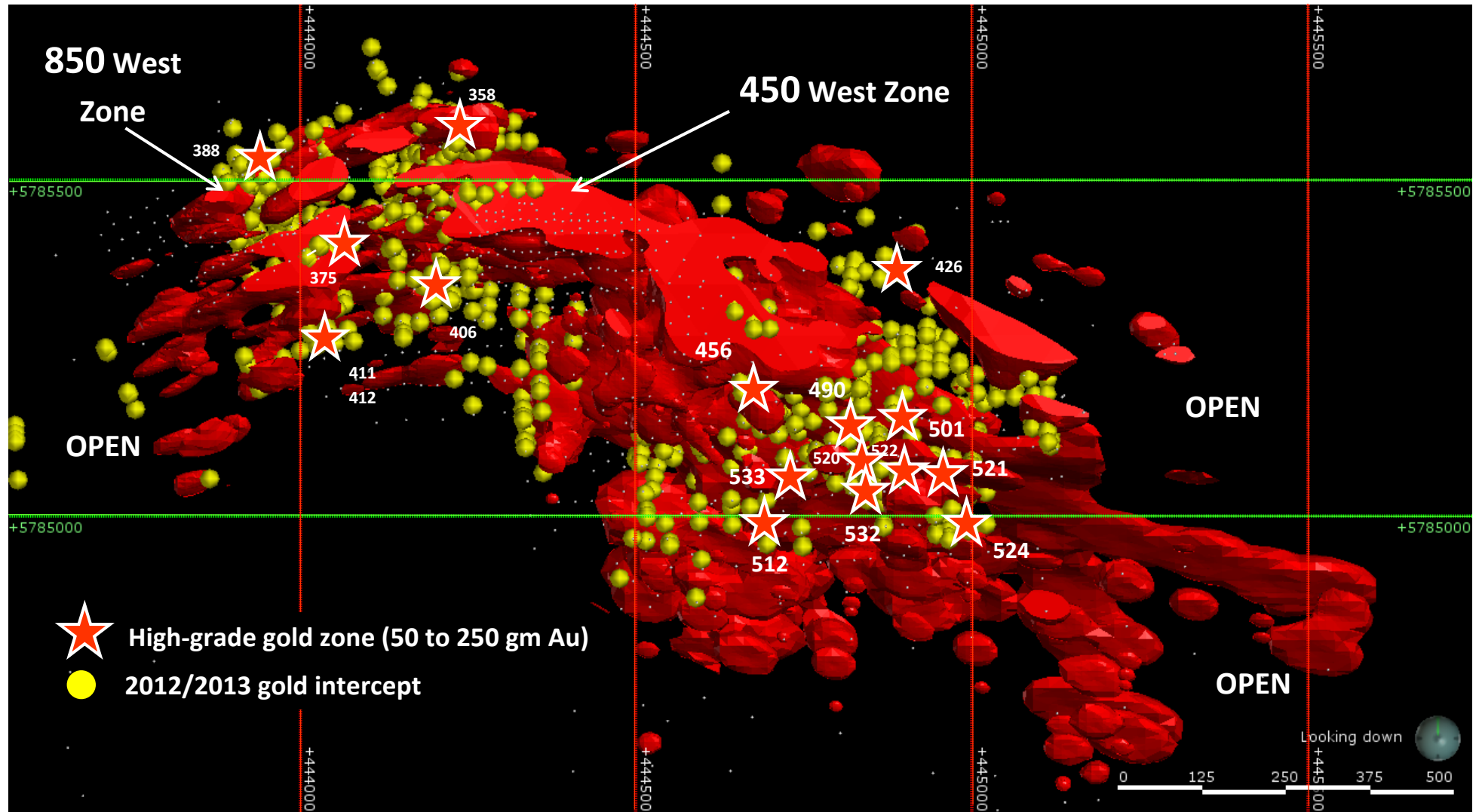
250 m

Note – Gold Mineralization surface projection represents the 0.5 g/t Au grade shell created in Leapfrog based on drilling up to 2011. Drill hole azimuth N 355E dipping 45 to 60 degrees north.

Eau Claire Gold Deposit – 3D Model Looking Down

3D Plan View – 0.5 g/t GOLD Grade Shell of Eau Claire

Eau Claire Gold Deposit Footprint – 1.8 km long by 150 m wide traced to 900 m depth

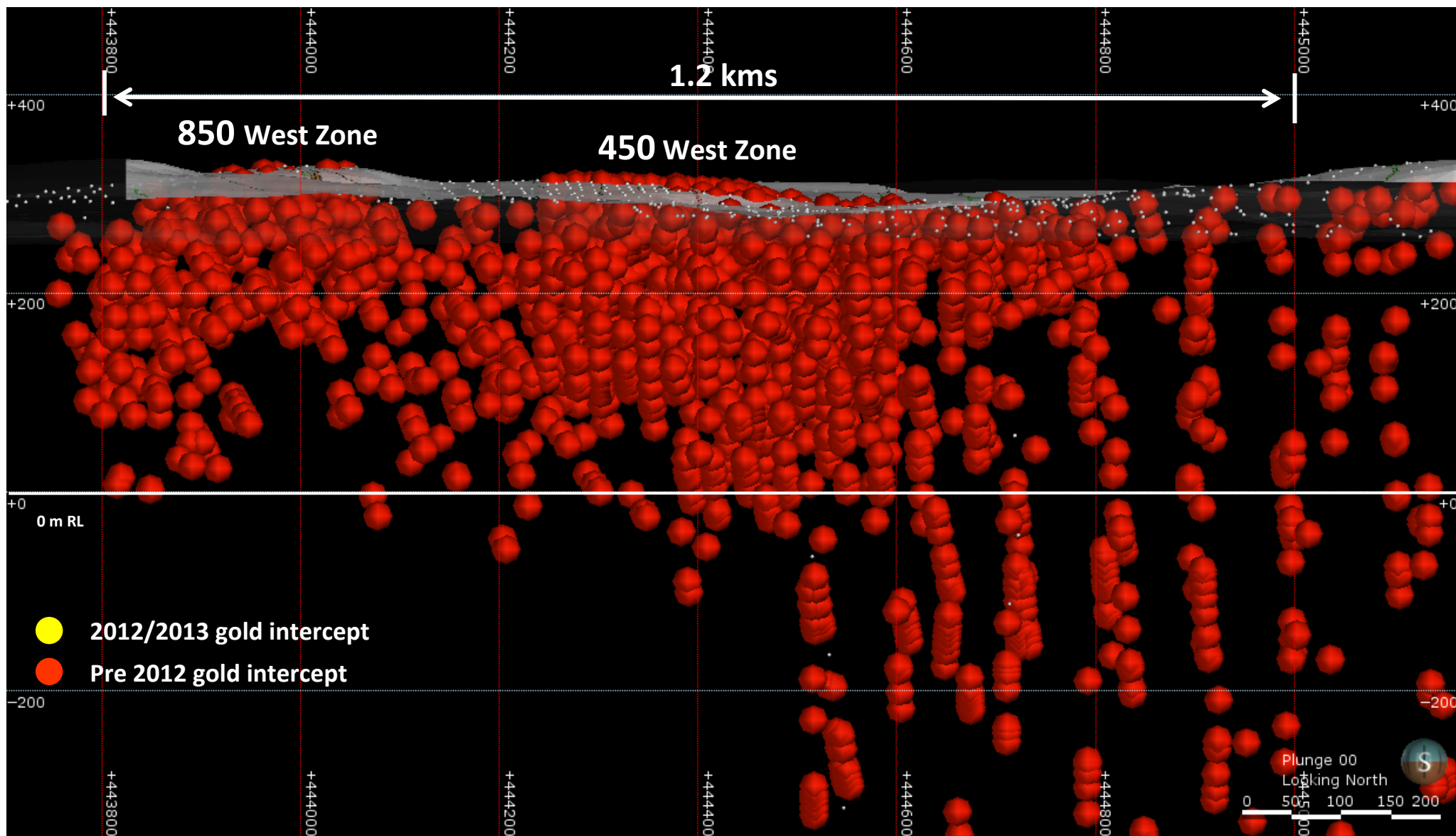


- 3D modeling of Eau Claire illustrates a large crescent-shaped body with a “hinge” forming between the 450 & 850 West Zones
- The gold-bearing vein system changes direction from the 450 West Zone (E-W, dipping S & NW Domains dipping SW) to the 850 West Zone (NE-SW, subvertical dip).
- 490 – 4.78 g/t Au / 21.0 m; 501 – 10.94 g/t Au / 12.0 m; 512 – 4.89 g/t Au / 31.0 m; 520 – 9.69 g/t Au / 10.0 m; 521 – 59.4 g/t Au / 2.0 m; 522 – 8.25 g/t Au / 9.0 m; 524 – 131.5 g/t Au / 2.0 m; 532 – 25.8 g/t Au / 4.0 m; 533 – 44.4 g/t Au / 4.0 m, incl. 88.9 g/t Au / 2.0 m

Eau Claire Gold Deposit – BEFORE

3D Leapfrog view of gold-bearing drill intersections Pre-2012 Drilling

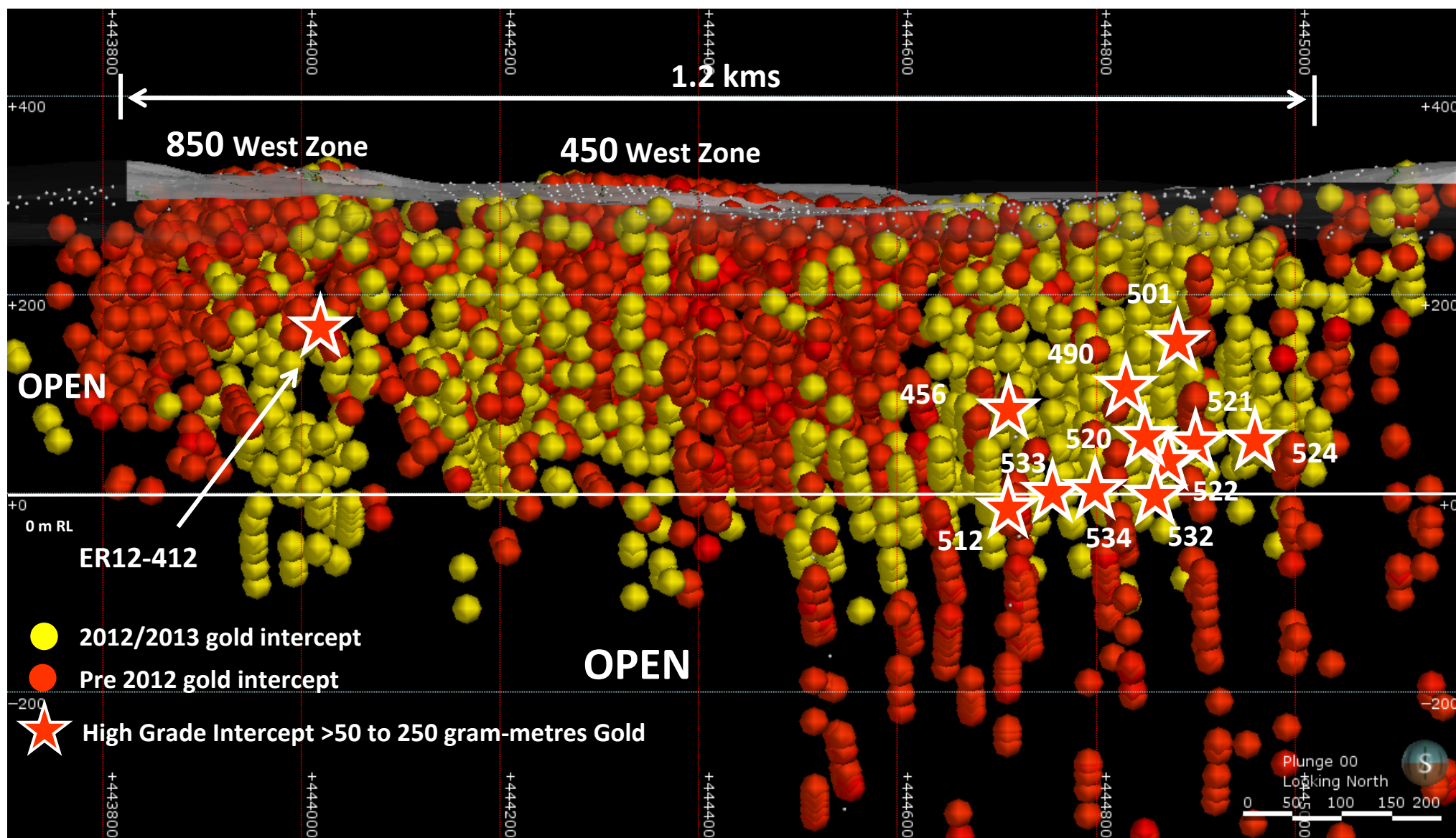
Longitudinal view of Eau Claire Gold Deposit – Looking North



Eau Claire Gold Deposit – AFTER (2013 Drilling)

3D Leapfrog view of gold-bearing drill intersections >0.5 g/t Au

Longitudinal view of Eau Claire Gold Deposit – 450 & 850 Zones



- 2012 & 2013 Drilling has expanded and defined lateral & vertical continuity of the Eau Claire gold deposit within 300 metres of surface
- ER12-412 – 17.7 g/t Au / 6.5 m; ER12-456 – 10.98 g/t Au / 11.0 m; ER13-490 – 4.78 g/t Au / 21.0 m; ER13-501 – 10.94 g/t Au / 12.0 m; ER13-512 – 4.88 g/t Au / 31.0 m; ER13-520 - 9.69 g/t Au / 10.0 m; ER13-521 - 59.4 g/t Au / 2.0 m; ER13-522 - 8.25 g/t Au / 9.0 m; ER13-524 – 131.5 g/t Au / 2.0 m; ER13-532 – 25.8 g/t Au / 4.0 m; ER13-533 – 44.4 g/t Au / 4.0 m

One of the Highest Grade Undeveloped Gold Deposits in North America

Eau Claire – Potential to be a Low Capex, High Return OPEN PIT & UG Gold Deposit

- **2013 Drilling defines a High Metal Endowment Sector down-plunge on 450 West Zone**
- **Wider Mineralized Zones coincide with intersecting gold-bearing structures**
- **Blue-sky Discovery Potential exists within the Eau Claire Footprint & Laterally along a Regional Break**
- **Property-scale exploration program in progress**
- **Eau Claire Deposit re-modeling complete, wire framing in progress followed by a Block Model Resource Update**
- **Next Step – Preliminary Economic Assessment**



Management Team With a Track Record of Exploration Success

Management

Donald J. Robinson, Ph.D., P.Geo

President, CEO & Director since 1994

30 years experience with base & precious metal deposits

Qualified Person (APGO & OGQ)

Catherine I. Butella, B.Sc.

Exploration Manager

30 years exploration experience in Canada & Australia

PDAC “Prospector of the Year” Nominee

James L. Bezeau, BBA, CMA

Chief Financial Officer

30 years of financial, accounting & managerial experience

David Frappier-Rivard

District Geologist, M.Sc., P.Geo

12 years exploration experience in Canada & Africa

Jay Goldman, BA, MBA, LLB

Corporate Secretary

Cassels Brock & Blackwell - Partner

Chad Steward

Manager Corporate Communications

Directors

John A. Hansuld, Ph.D.

Director since 1985

>45 years Mining Executive in global exploration

PDAC – Mining Man & Developer of the Year; CMHF

David K. Joyce,

Director

30+ years Mining Industry experience

Ian J. Bryans, BA

Director, Compensation Committee Chair

30 years experience in strategic marketing

Murray Short, MBA, CPA, CA

Director, Audit Committee Chair

9 years experience in public accounting

Advisory Board

Richard W. Hutchinson, Ph.D. , Professor Emeritus

Leading authority in Ore Deposits Geology, CMHF

Neil Hillhouse, Ph.D.,

50 years experience; credited with numerous discoveries

Surge Bureau, MSc, P. Eng

30 years Mine Development & Project Management

Dr. Ted Moses, former Cree Grand Chief

Officer of the Order of Quebec; Clearwater Project – Tallyman



EASTMAIN

Adding Value Through Discovery

**36 Toronto Street
Suite 1000
Toronto, Ontario
Canada, M5C 2C5**

**Tel: 519-940-4870
Fax: 519-940-4871
www.eastmain.com
info@eastmain.com**