

Sama Resources Inc.

The Emergence



September 2014

Developing West Africa's First Nickel, Copper, Palladium District

FORWARD LOOKING STATEMENTS

This presentation contains forward-looking statements. Forward-looking statements involve known and unknown risks, uncertainties and assumptions and accordingly, actual results and future events could differ materially from those expressed or implied in such statements. You are hence cautioned not to place undue reliance on forward-looking statements. Forward-looking statements include words or expressions such as “objectives”, “forecast”, “pursue”, “growth”, “estimate” and other similar words or expressions. Factors that could cause future results or events to differ materially from current expectations expressed or implied by the forward-looking statements include, but are not limited to, exploration results, revenue, fluctuations in the price of currencies, gold or local operating costs, mining industry risks, delays, political and social stability in Africa including our ability to maintain or renew permits and other risks as described in our documents filed from time to time with Canadian securities regulatory authorities. Such information can be found in Sama’s “2013” Annual MD&A as updated in quarterly reporting as well as other filings made with Canadian securities regulatory authorities and available at www.sedar.com.

These forward-looking statements are dated as of August 21, 2014 and we disclaim any obligation to update or revise these forward-looking statements, except as required by applicable law.

SAMA RESOURCES AT GLANCE

Ticker	TSX-V: SME
Shares (Basic)	93.0 M
Options (avg. \$0.34 strike)	8.1 M
Warrants (avg. \$0.32)	8.6 M
Market Cap (@ August 21)	\$25 M
Debt (August 2014)	Nil
Project Locations	Ivory Coast, Guinea

STOCK PERFORMANCE



SHAREHOLDERS

- MMG (China Minmetals) 16.5%
- IFC (World Bank) 11.2%
- African Lion 4.2%
- Management & Insiders 7.0%

STRONG MANAGEMENT TEAM & BOARD OF DIRECTORS

MANAGEMENT

Benoit La Salle – Executive Chairman and Director (FCPA, FCA, MBA)

- Former President & CEO of SEMAFO Inc.

Marc-Antoine Audet – President, CEO, and Director (PhD Geology, P.Geo.)

- 27 years of geological experience in exploration and development with Falconbridge and Xstrata Nickel

Bryan McKenzie – CFO (CPA, CA)

- 10 years experience in finance, accounting, auditing and public markets and former CFO of Salares Lithium Inc.

Bakayoko Bouake – Exploration Manager, West Africa

- Involved in Falconbridge's nickel sulphide exploration project between 1994 - 2008

BOARD OF DIRECTORS

Marcel Aubut – Director (O.C., O.Q., Q.C., Ad. E.)

- Partner, Vice-Chairman BCF Business Law and President of the Canadian Olympic Committee

Todd Hilditch – Director (BSc.)

- President & CEO of Terraco Gold Corp. and former President & CEO of Salares Lithium Inc.

Richard Quesnel – Director (BSc., Eng.)

- Former President & CEO of Consolidated Thompson iron Mines of Montreal

James Gervais – Director (CMM, CD, LGen)

- Former Lead Director of Northern Gold Mining Inc.

Steven Ryan – Director (BSc., MBA)

- Executive General Manager, Exploration of MMG Limited

ADVISORS

Ron Netolitzky – Advisor (Msc., P.Geo)

- Former Chairman of Viceroy Resources Corp., Loki Gold Corp., and Baja Gold

Mike Halvorson – Advisor (Bcomm)

- Former Director of Novus Energy, Gentry Resources, Viceroy Exploration, and Western Silver

Matt Johnston – Corporate Development Advisor (BBA)

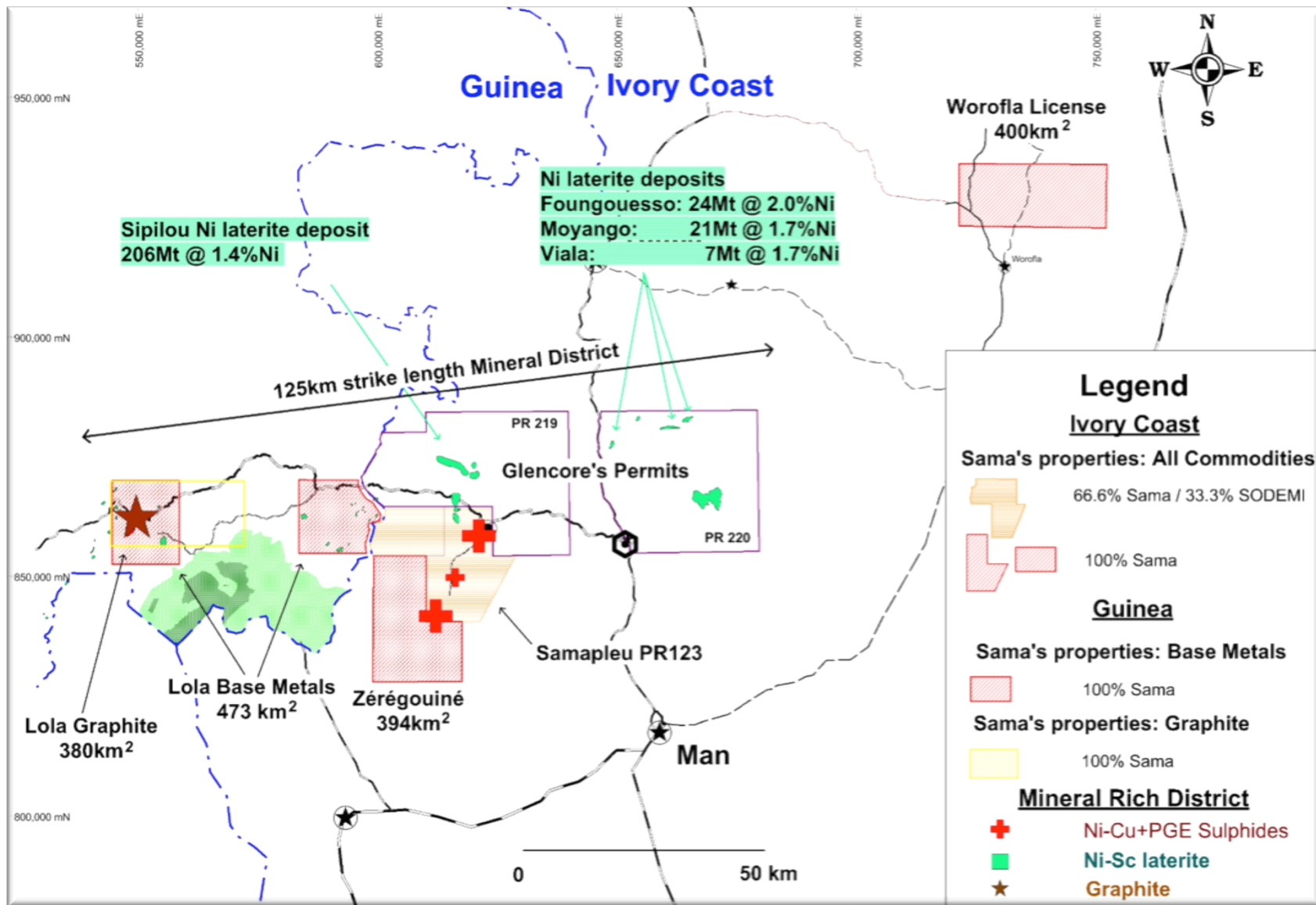
- Former corporate advisor of Salares Lithium Inc. and Talison Lithium Ltd.

IVORY COAST: AN EMERGING ECONOMY

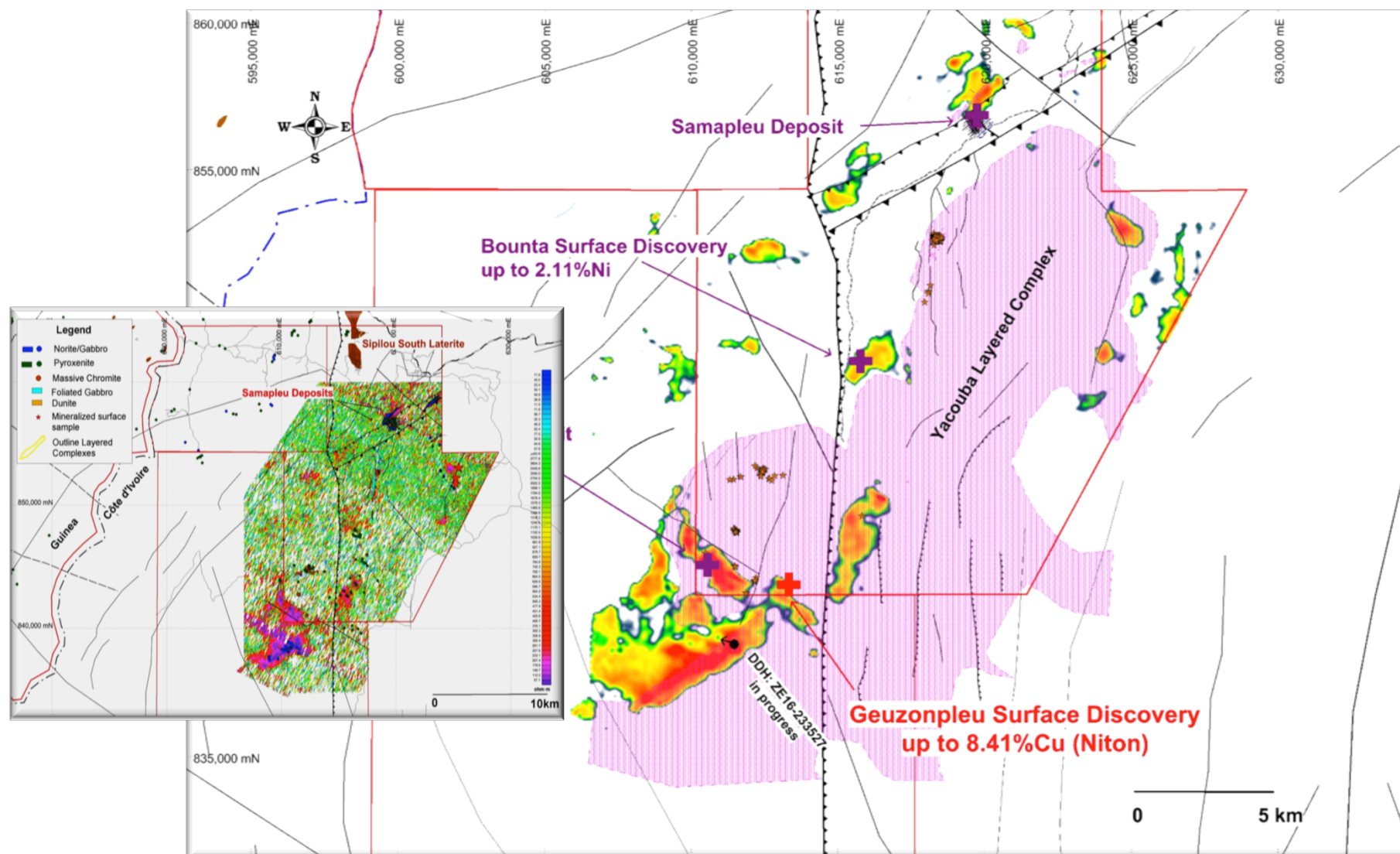
- Sama has built a strong partnership with the Ivorian government
- Dr. Marc-Antoine Audet & his exploration team have been active in the country since the mid-1990's (Falconbridge & Xstrata)
- Mining friendly country with new investor-oriented mining codes
- Considered among the fastest growing economies in Africa (2014 forecast of 9%)
- Sama is active in the communities with CSR initiatives that include the construction of schools and homes, the installation and maintenance of clean water pumps, as well as being an important employer in several areas in West Africa



High Potential Assets: Sama's Projects



REGIONAL EXPANSION POTENTIAL, IVORY COAST

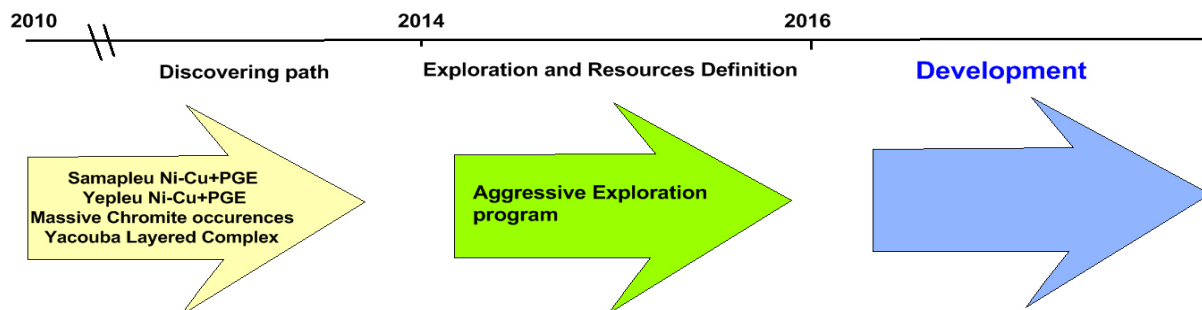


SAMAPLEU PROJECT, FOCUS & EXPLORATION

Sama's focus is to rapidly explore for massive sulphide mineralization within the newly discovered and large Yacouba Layered Complex



HOLE-ID	FROM	TO	LENGTH	Ni %	Cu %	Pd g/t
Samapleu Main						
SM44-450250b	33.50	92.90	59.40	0.89	0.86	0.81
incl.	85.25	91.90	6.65	3.80	2.92	3.09
SM44-494350b	11.00	64.00	53.00	0.52	0.50	0.31
incl.	29.20	34.80	5.60	1.91	1.71	0.94
SM44-492354	10.00	61.00	51.00	0.72	0.61	0.45
incl.	36.00	46.00	10.00	1.76	1.30	1.00
incl.	24.00	29.00	5.00	1.32	1.18	0.75
SM44-450250	13.50	102.80	89.30	0.66	0.64	0.58
incl.	86.60	101.60	17.00	1.99	1.96	1.49
Extension 1						
SM25-112519	22.00	144.00	122.00	0.44	0.32	0.94
incl.	84.90	95.90	11.00	1.89	0.78	2.84
SM24-661614	67.30	244.00	176.70	0.26	0.20	0.49
incl.	162.00	170.60	8.60	1.02	0.95	1.51
Yepleu						
YE34-418407A	26.15	48.00	21.85	0.42	0.23	0.12
incl.			4.40	1.13	0.14	0.29





Samapleu Main

SM44-450250

100-101m: 5.16 % Ni, 3.41 %Cu, 3.42 gm/t

Pd

Samapleu Extension 1

SM25-112519

88-89m: 2.67 % Ni, 0.75 %Cu, 4.04 gm/t Pd

SAMAPLEU PROJECT

GEOLOGICAL MODEL AND POTENTIAL

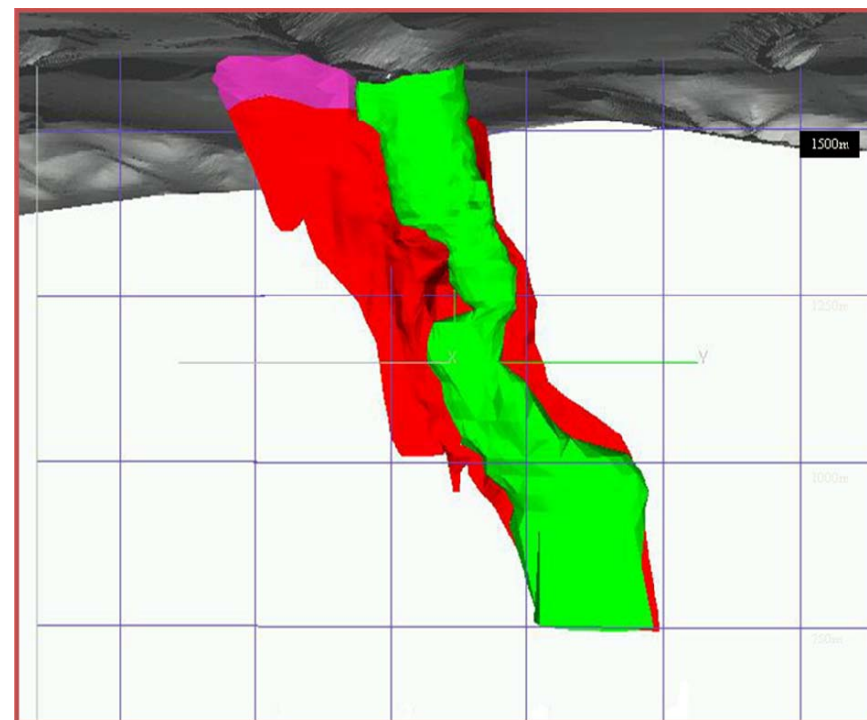
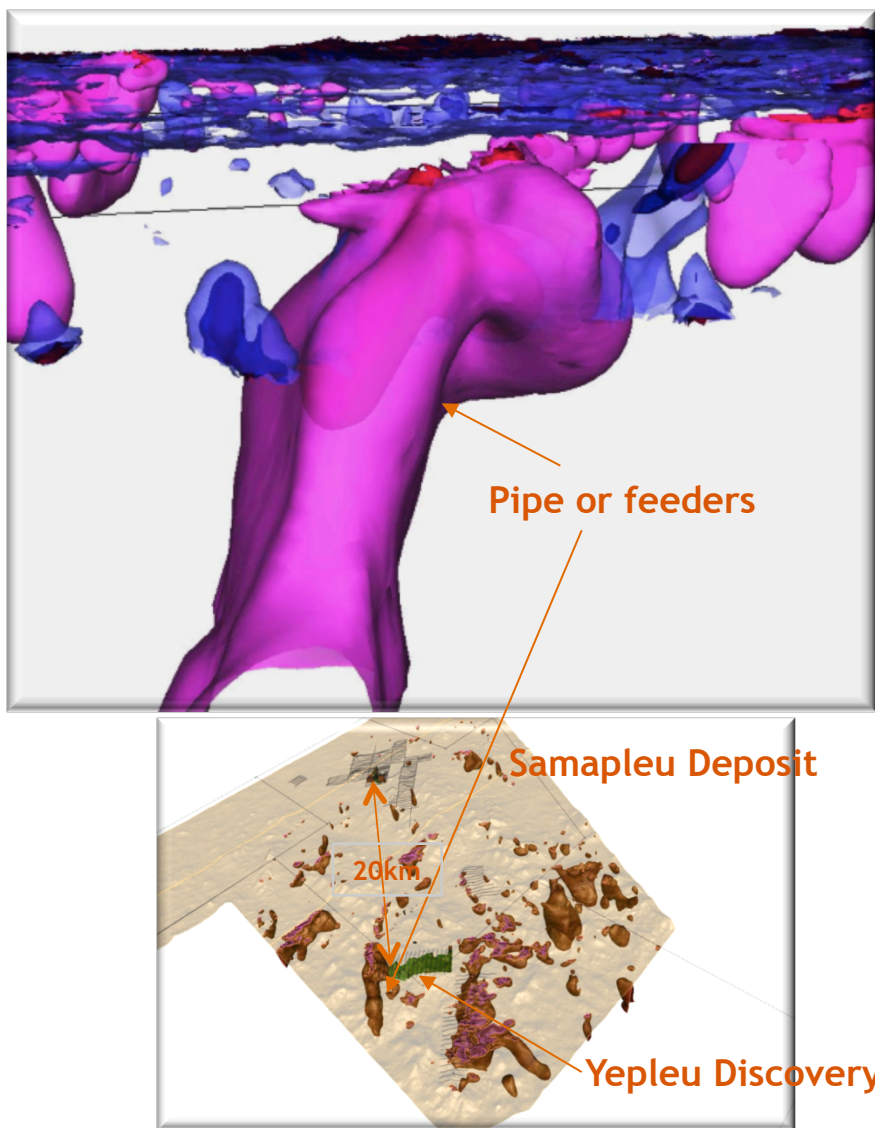
The Samapleu and Yepieu deposits' mineralization and geological characteristics are typical of a layered **Pipe-like Intrusion** or conduit-hosted nickel deposits

These rare types of intrusions host the world's largest nickel-copper deposits such as:

- Noril'sk (2,216 Mt at 0.78%Ni, 1.38% Cu)
- Jinchuan (515 Mt at 1.06%Ni, 0.67% Cu)
- Voisey Bay (137 Mt at 1.68%Ni, 0.87% Cu)
- Eagle (5 Mt at 3.33%Ni)
- Eagle Nest (20 Mt at 1.68%Ni, 0.90% Cu)
- Kalatongke (24 Mt at 0.68%Ni, 1.08% Cu)
- N'komati (3 Mt at 2.08%Ni, 1.14% Cu)

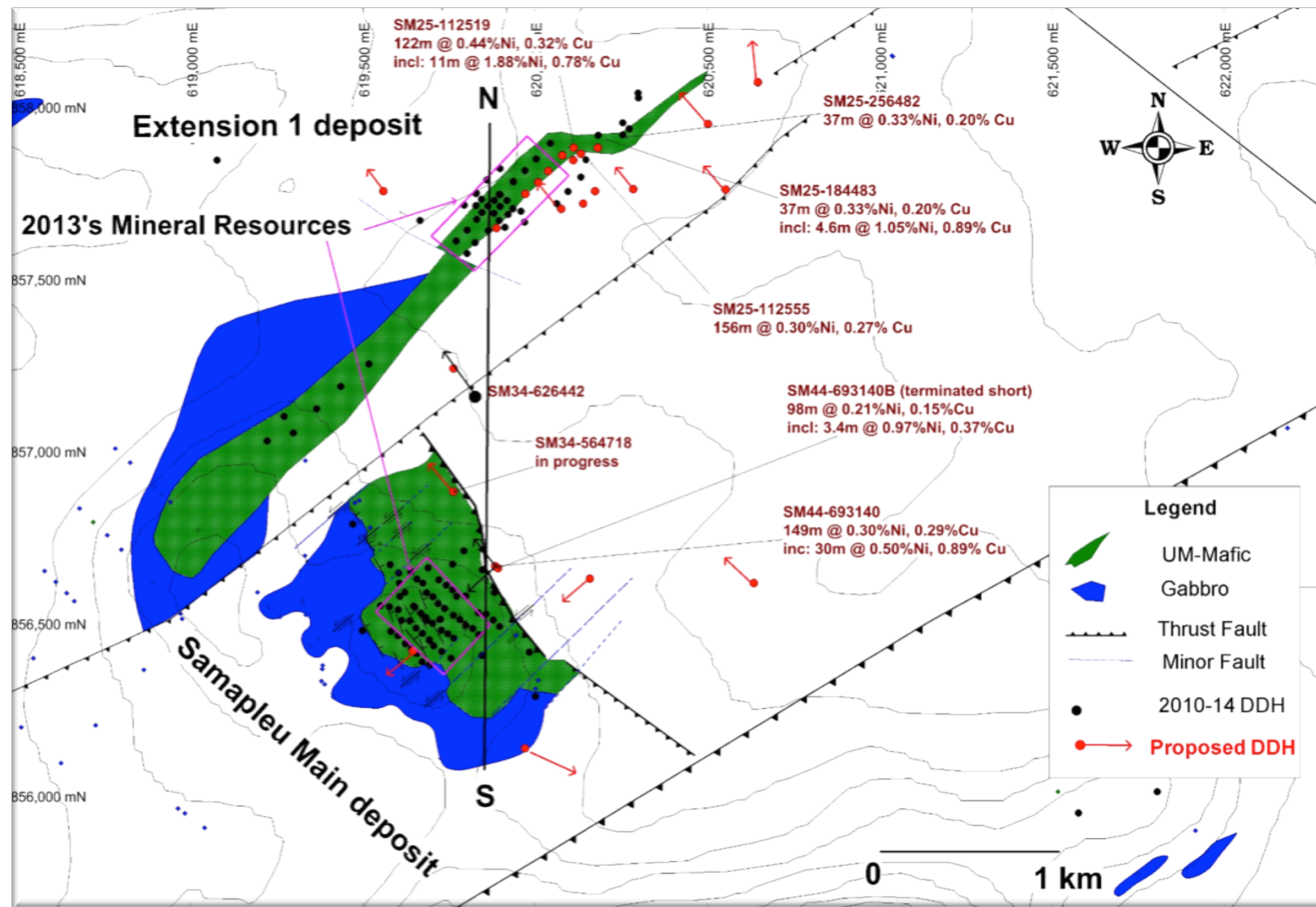


SAMAPLEU' S GEOLOGICAL POTENTIAL

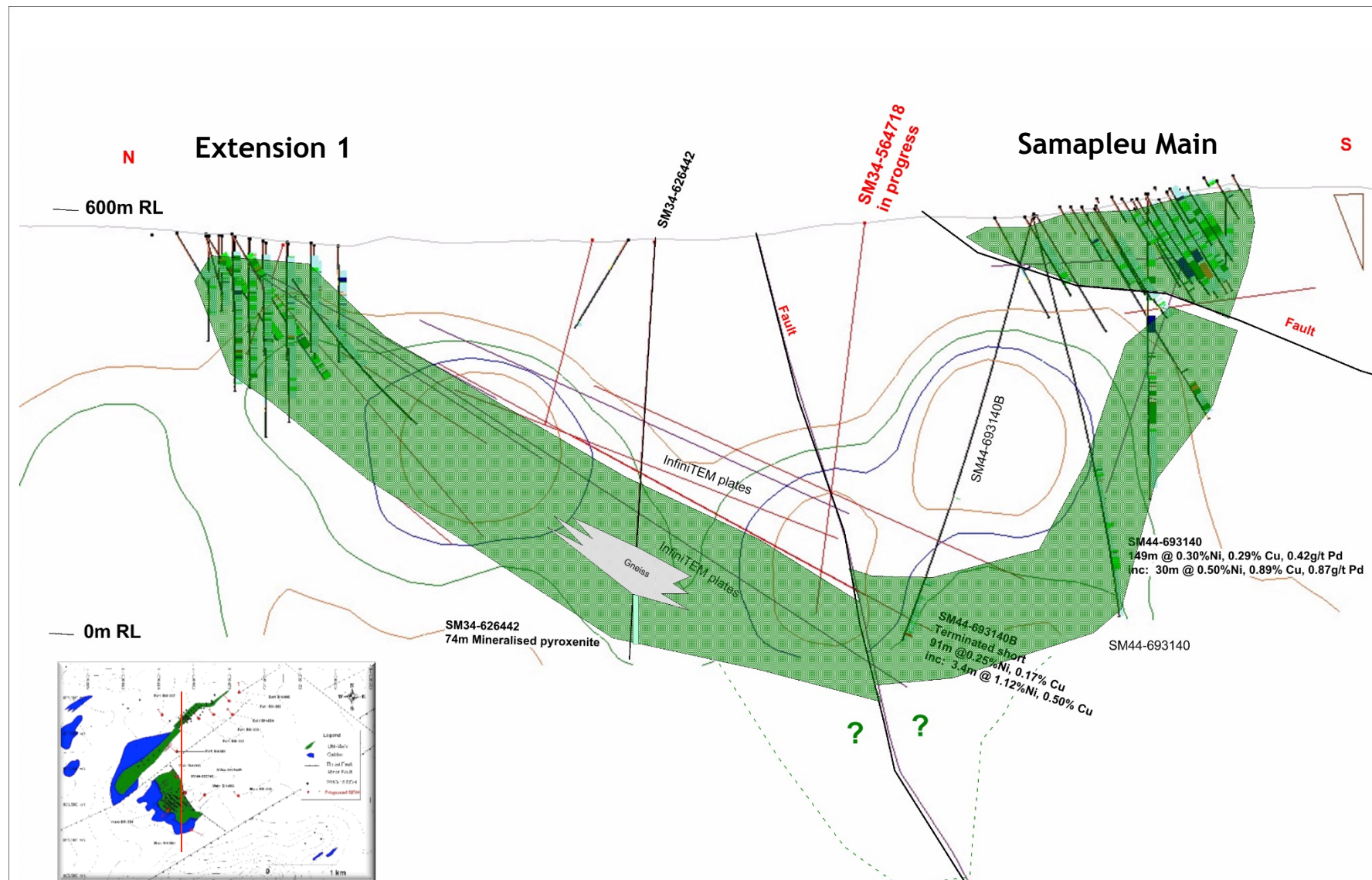


Kabanga North (Tanzania) 3D model illustrating the steep plunge of a typical Pipe like Intrusion. Green denotes presence of mineralization within the Pipe like Intrusion (52Mt @ 2.65% Ni)

SAMAPLEU MAIN & EXTENSION PROPOSED 2014' S DRILLING PROGRAM

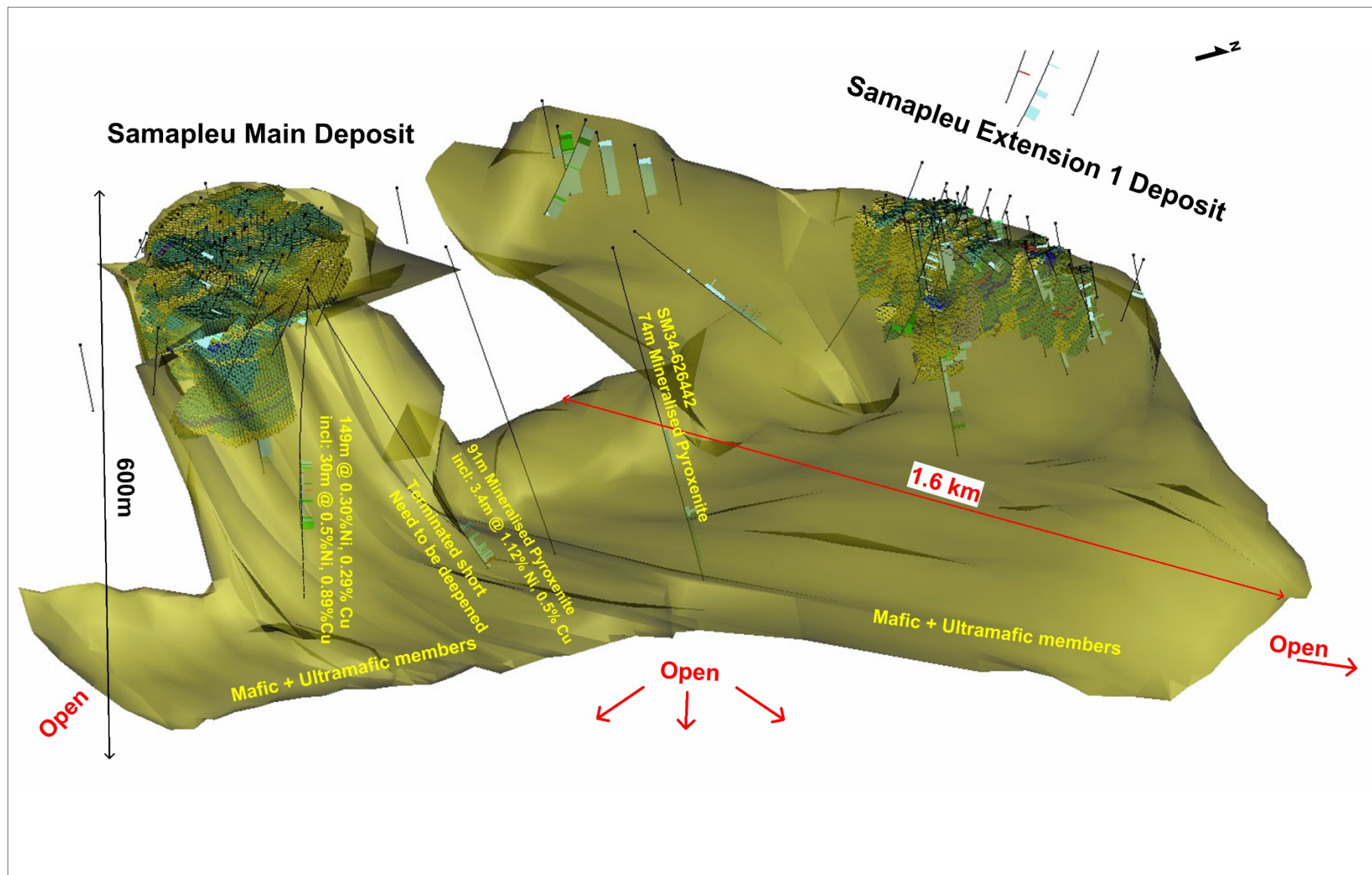


SAMAPLEU MAIN & EXTENSION SECTION N-S



SAMAPLEU MAIN & EXTENSION

3D GEOLOGICAL MODEL & MINERALIZATION POTENTIAL



THANK YOU / MERCI

Sama Resources Inc. / Ressources Sama Inc.

Suite 132 - 1320 Graham, Ville Mont-Royal, QC, Canada, H3P 3C8
Tel: 514.726.4158

Suite 1825 - 1055 West Hastings St. Vancouver, BC, Canada V6E 2E9
Tel: 604.443.3835 | Toll-free: 1.877.792.6688 Ext: 4

E-mail: info@samaresources.com Website: www.samaresources.com