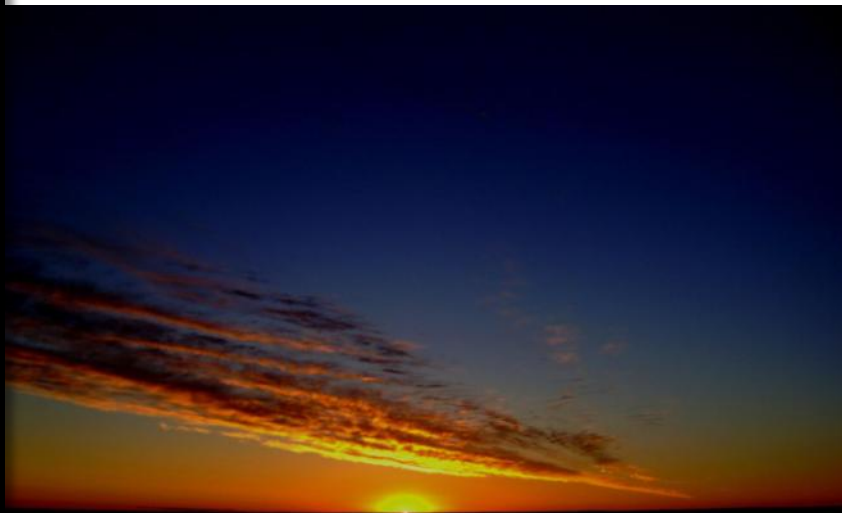




Erdene Resource  
Development Corp.

TSX: ERD



# The Altan Nar Gold Project

## A New Discovery with Exceptional Upside

*Corporate Presentation, May 2014*

# Forward Looking Statements



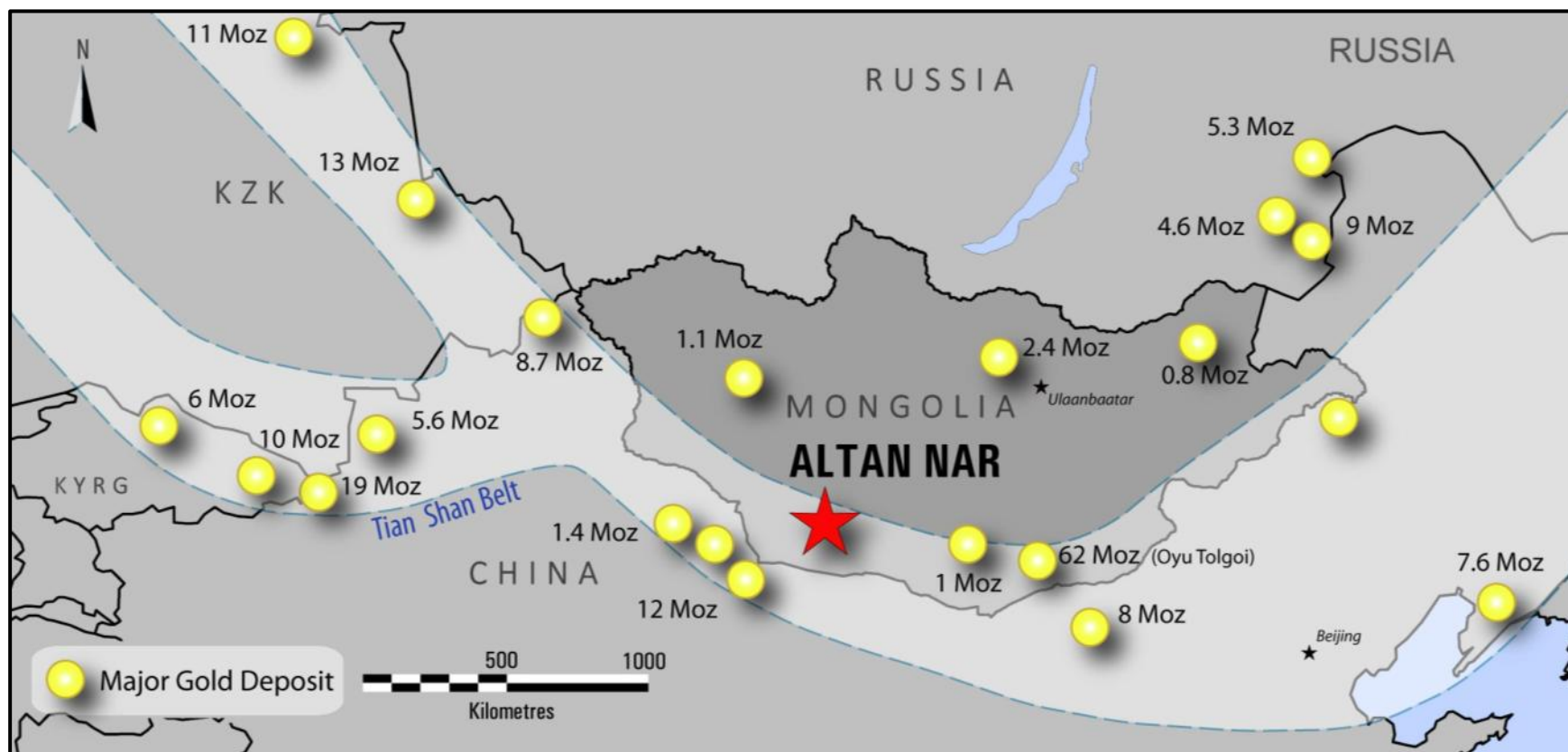
Certain information regarding **Erdene** ("the Company") contained herein may constitute forward-looking statements within the meaning of applicable securities laws. Forward-looking statements may include estimates, plans, expectations, opinions, forecasts, projections, guidance or other statements that are not statements of fact. Although the Company believes that the expectations reflected in such forward-looking statements are reasonable, it can give no assurance that such expectations will prove to have been correct. The Company cautions that actual performance will be affected by a number of factors, many of which are beyond the Company's control, and that future events and results may vary substantially from what the Company currently foresees.

Factors that could cause actual results to differ materially from those in forward-looking statements include market prices, exploitation and exploration results, continued availability of capital and financing and general economic, market or business conditions.

The Company's forward-looking statements are expressly qualified in their entirety by this cautionary statement. The information contained herein is stated as of the current date and subject to change after that date.

Unless otherwise indicated, all dollar values herein are in C\$.

# Exploring for the Next Major Gold Mine in the Tian Shan Gold Belt



Along Trend of Giant Deposits  
China - World's Largest Gold Producer and Consumer  
Provides Access to Investment and Lower Cost Equipment

# Why Erdene?

---



- **Advancing 100% Owned Altan Nar Gold Discovery**
  - Early in exploration phase with significant upside
- **Alliance with Teck Resources in 2013**
  - Establishing drill targets on copper porphyry target
- **Experienced Management Team**
  - A leading Mongolia metals exploration team since mid 1990's
- **Project Pipeline Includes Very Large 43-101 Molybdenum Deposit**
  - Adjacent to world's largest molybdenum consumer
- **Improving Investment Environment in Mongolia**
  - Favourable new Foreign Investment Law and reduction in gold royalty



# Erdene Share Structure & Performance



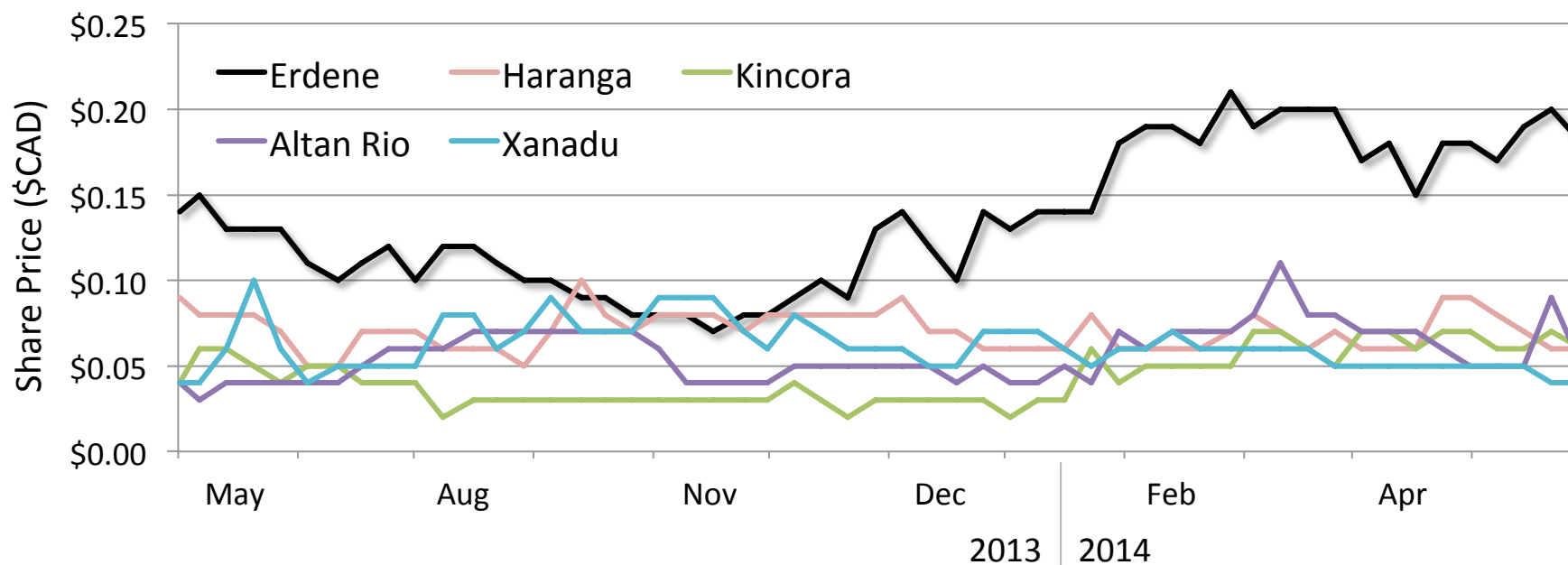
## Share Structure

Shares O/S	74.9 M
Shares F/D	88.5 M
Market Cap	\$14 M

## Shareholders

Retail	58%
Institutional/Corporate (Teck 12%)	30%
Management & Directors	12%

## Erdene vs. Mongolia Focused Metals Exploration Peers; 1 year share performance



# Strong Technical Management Team



**Peter C. Akerley, *President & CEO, Director***

Geologist with 25 years of international experience in mineral exploration, corporate financing, project development and management of publicly listed resource companies.



**Chris Cowan, *VP Asia, Director***

Minerals consultant, world-wide since 1990. Previously spent 28 years including technical direction of Falconbridge's worldwide surface and mining exploration.



**G. Bat-Erdene, *Director of Geology***

Geologist with over 25 years exploration experience in Mongolia including senior level roles with international companies such as Rio Tinto and Troy Resources.



**Mike MacDonald, *Director of Exploration***

Geologist with over 32 years experience in the mining industry in both government and industry. Previously led gold exploration programs in Mongolia in joint venture with Barrick Gold.



**Mike Gillis, *Director of Operations***

Geologist with over 25 years of experience in the mineral exploration industry in senior project and corporate management positions including the past 10 years in Mongolia.

# Mongolia Update



- ☒ New Foreign Investment Law
- ☒ New Securities Law
- ☒ Reduction in gold royalty rate (10% to 2.5%)
- ☒ Draft Minerals Policy (base for new Mining Law)
- ☒ Low corporate taxes established at 10 to 25%
- ☐ Amended Mining Laws
- ☐ Moratorium on issuance of new licenses lifted
- ☐ Oyu Tolgoi phase two funding approved



# Emerging Mining Region

## Improving Accessibility and Infrastructure



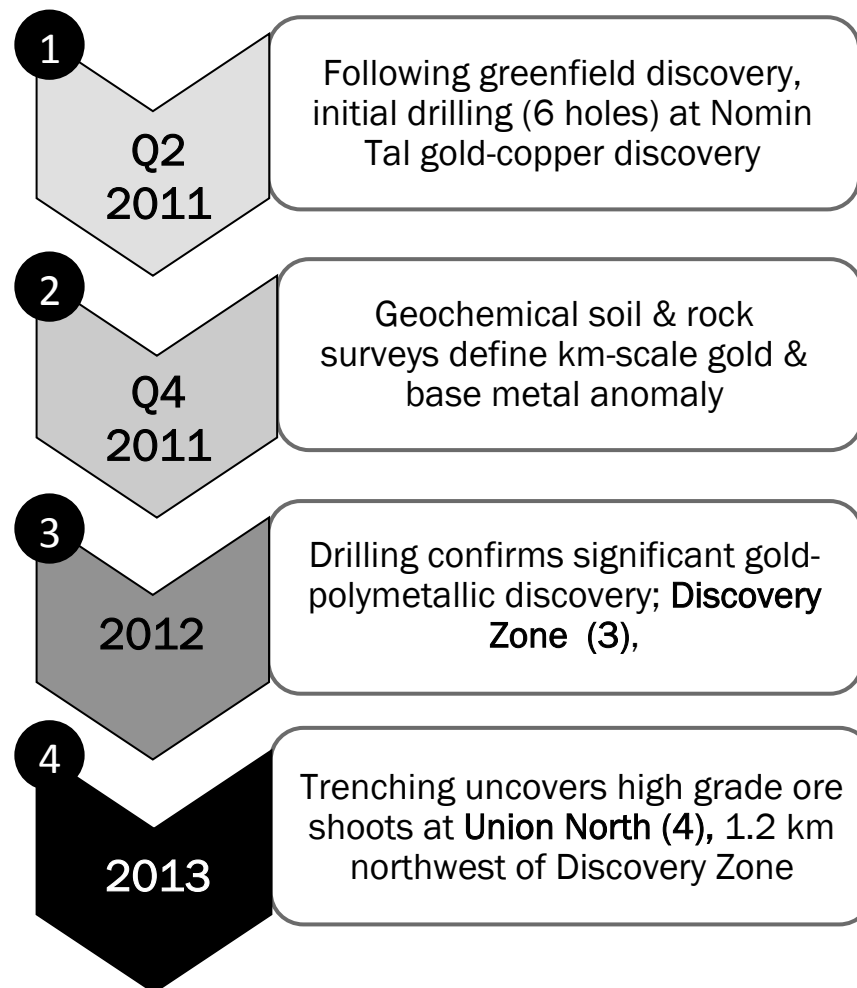
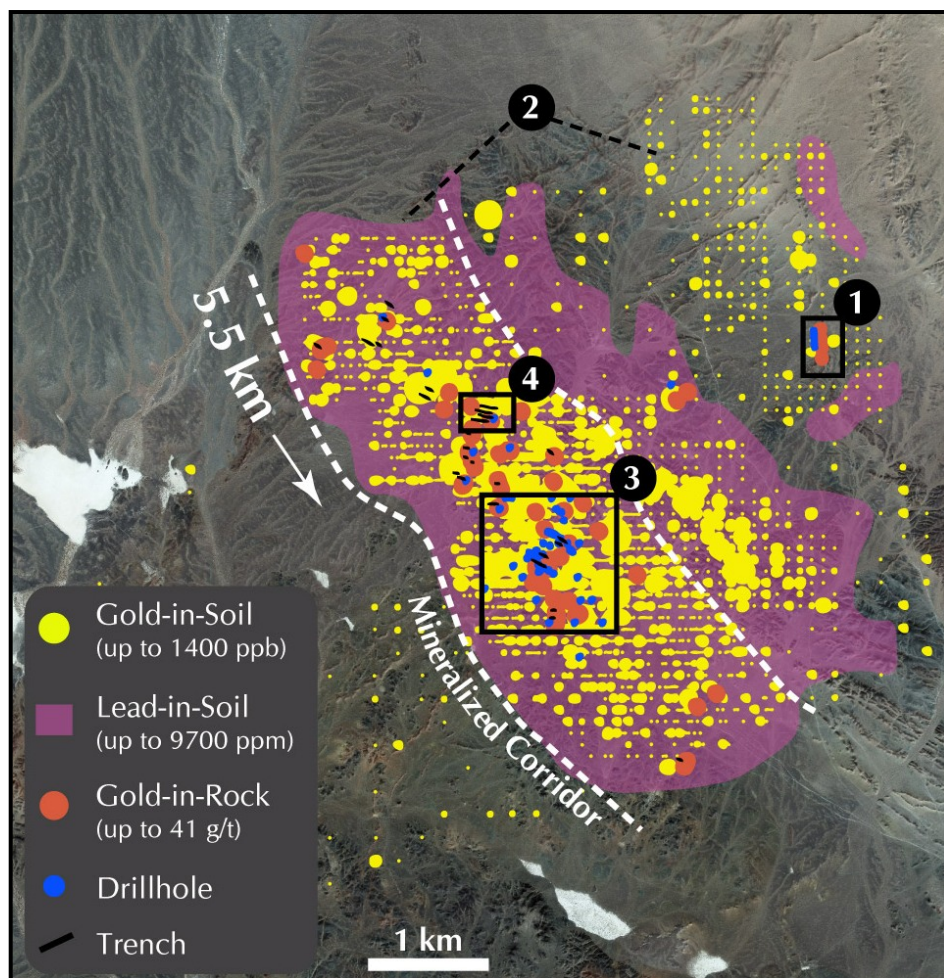


# Altan Nar Gold Project

## Extensive Gold Geochemical Footprint



Widespread Gold-Silver-Lead-Zinc Mineralization Traced Over 5.5 km x 1.5 km Area Hosted in Low Sulphidation Epithermal Alteration Zones up to 100 m in Width



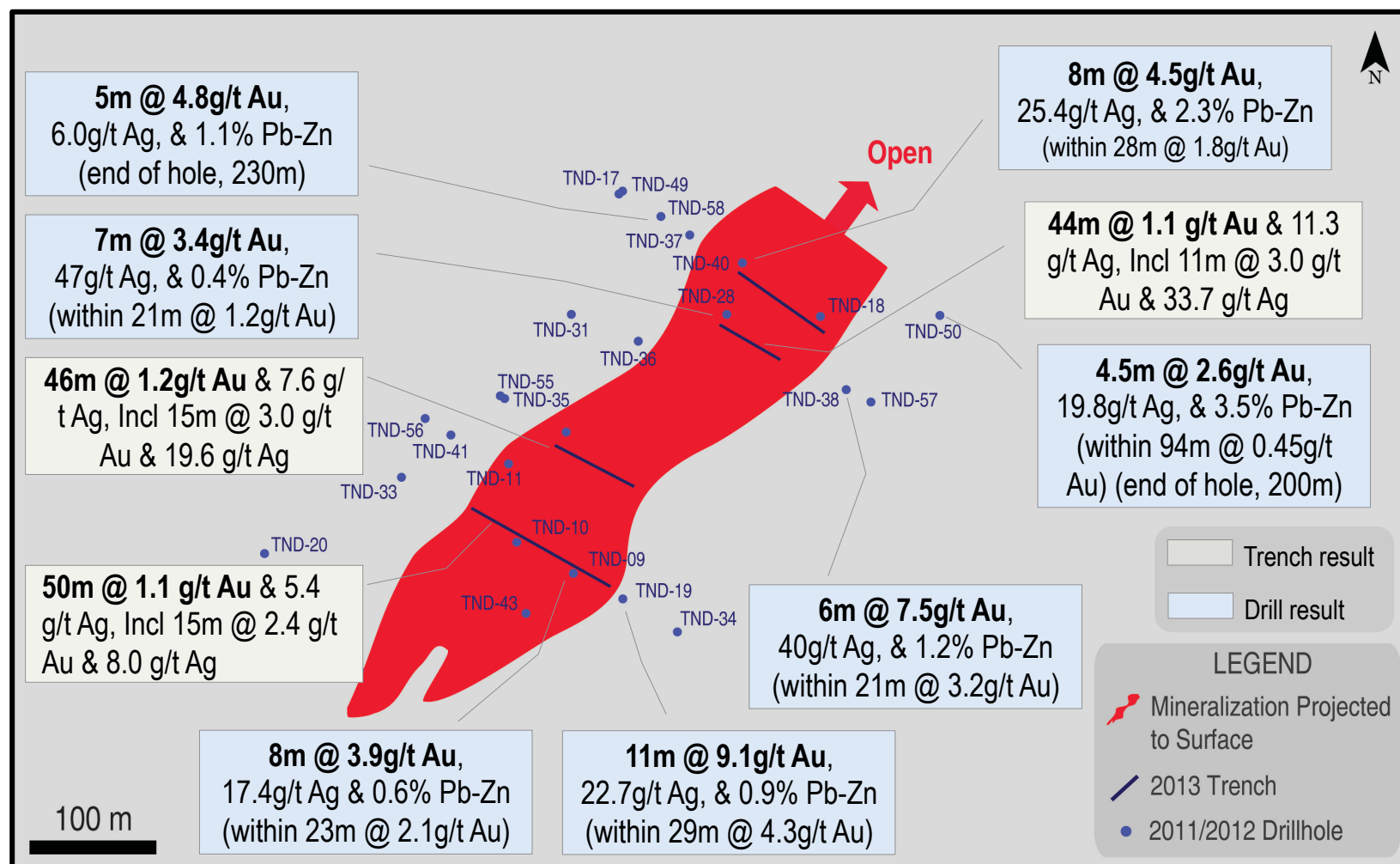


# Altan Nar Gold Project

## Discovery Zone – Drill & Trench Highlights



Intensely Mineralized, Near Surface, Open to the North and at Depth

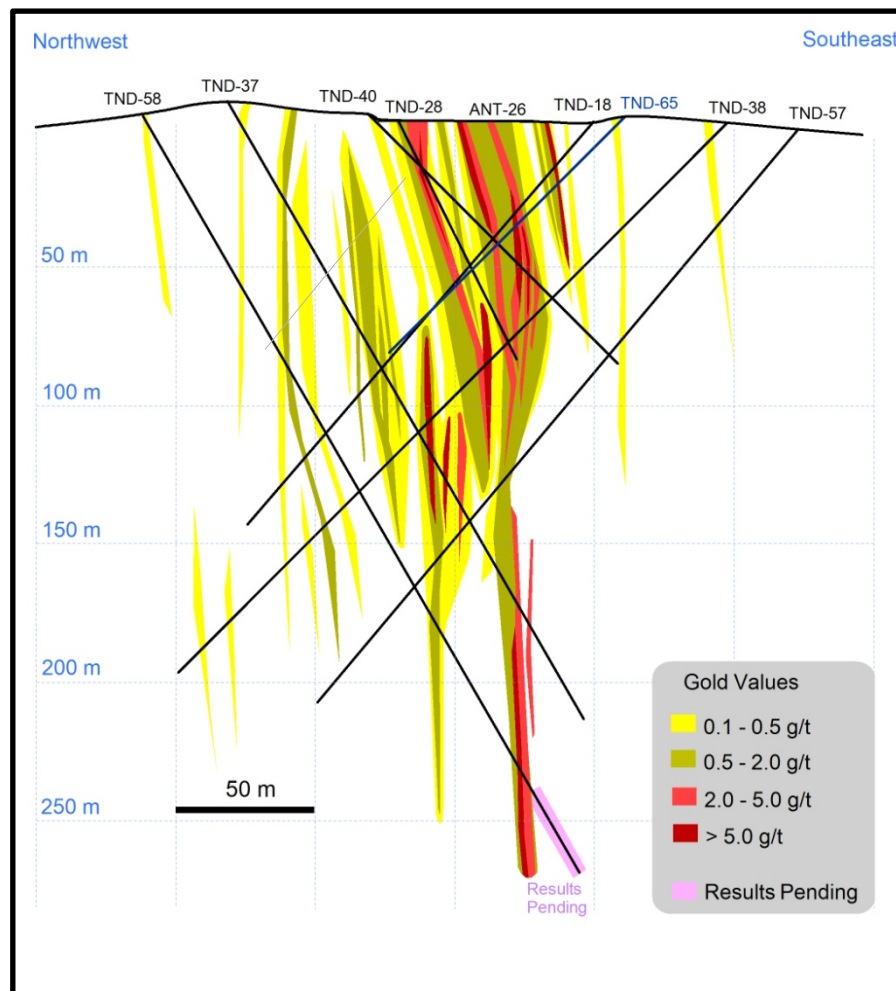


# Altan Nar Gold Project

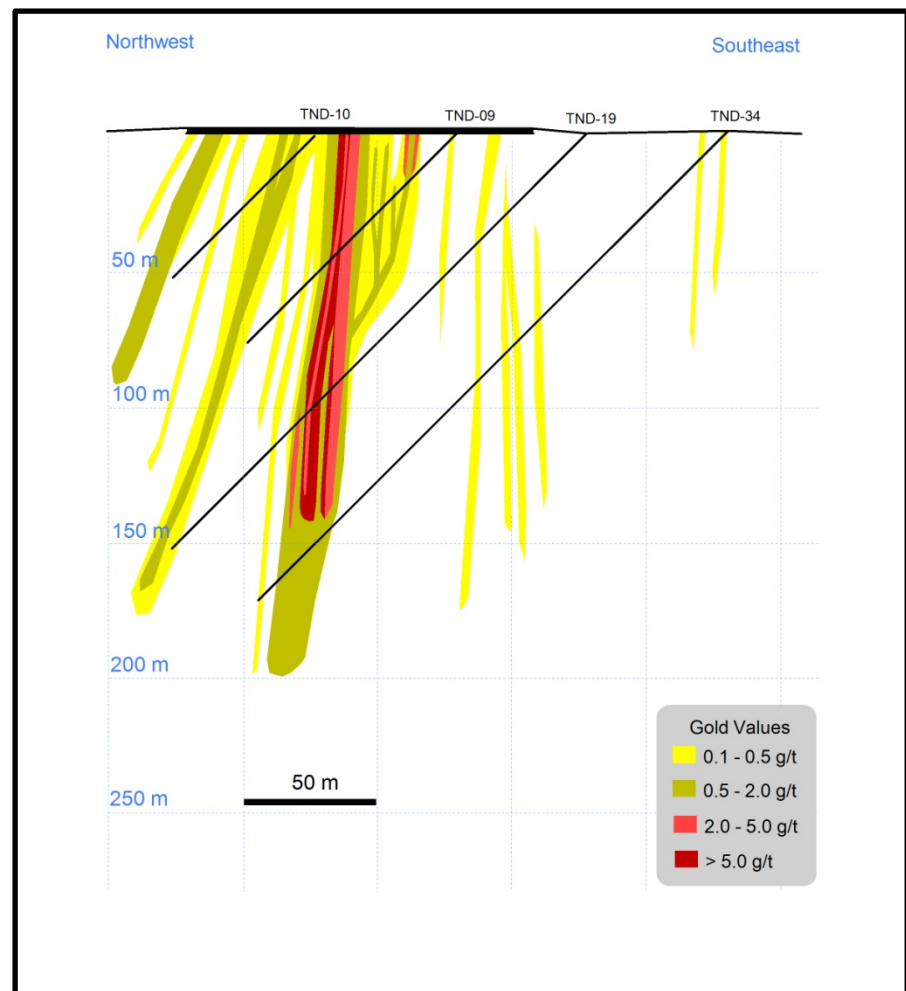
## Discovery Zone – Cross Sections



Discovery Zone North



Discovery Zone South

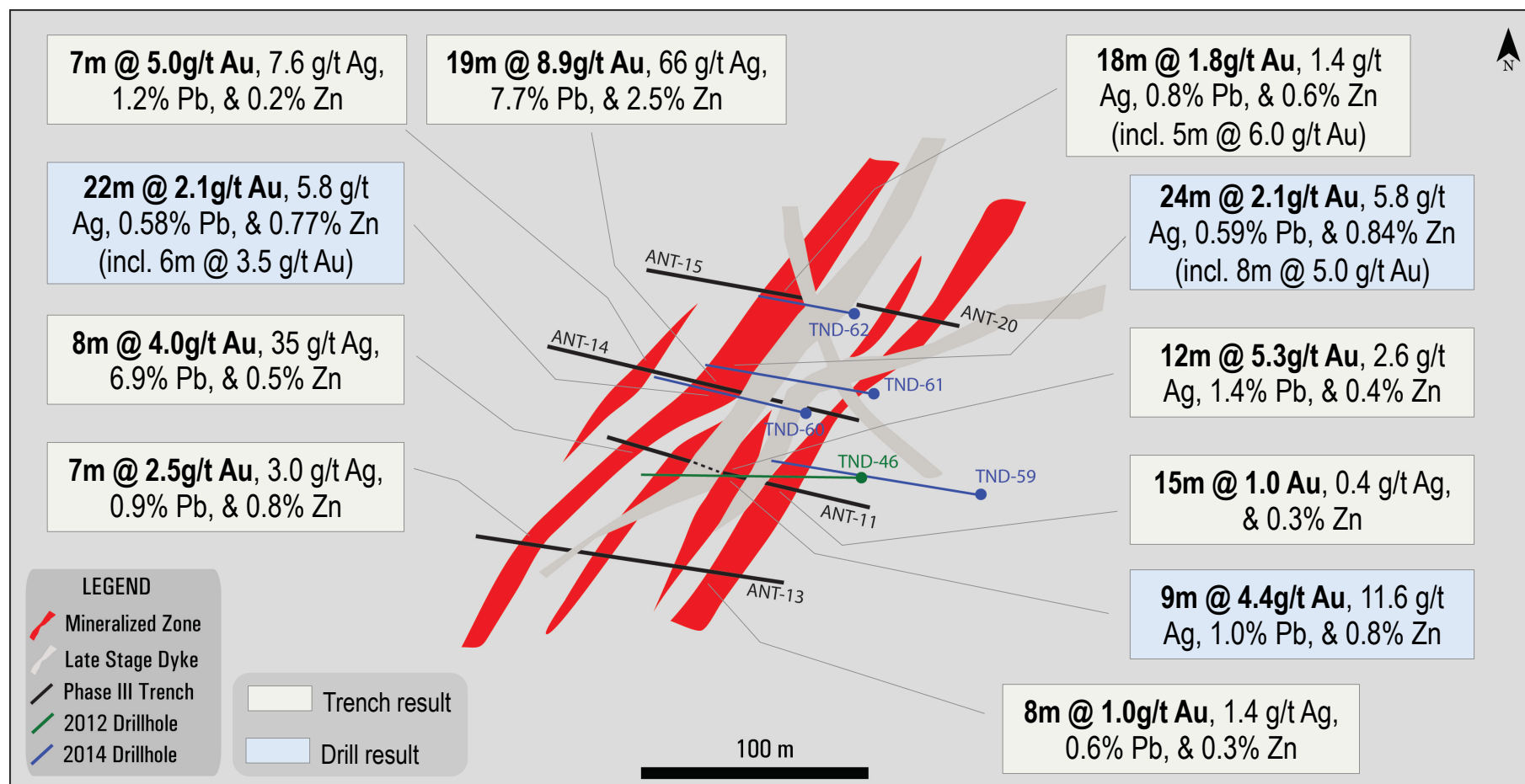


# Altan Nar Gold Project

## Union North – Drill & Trench Highlights



### Good Continuity of Trench and Drill Results

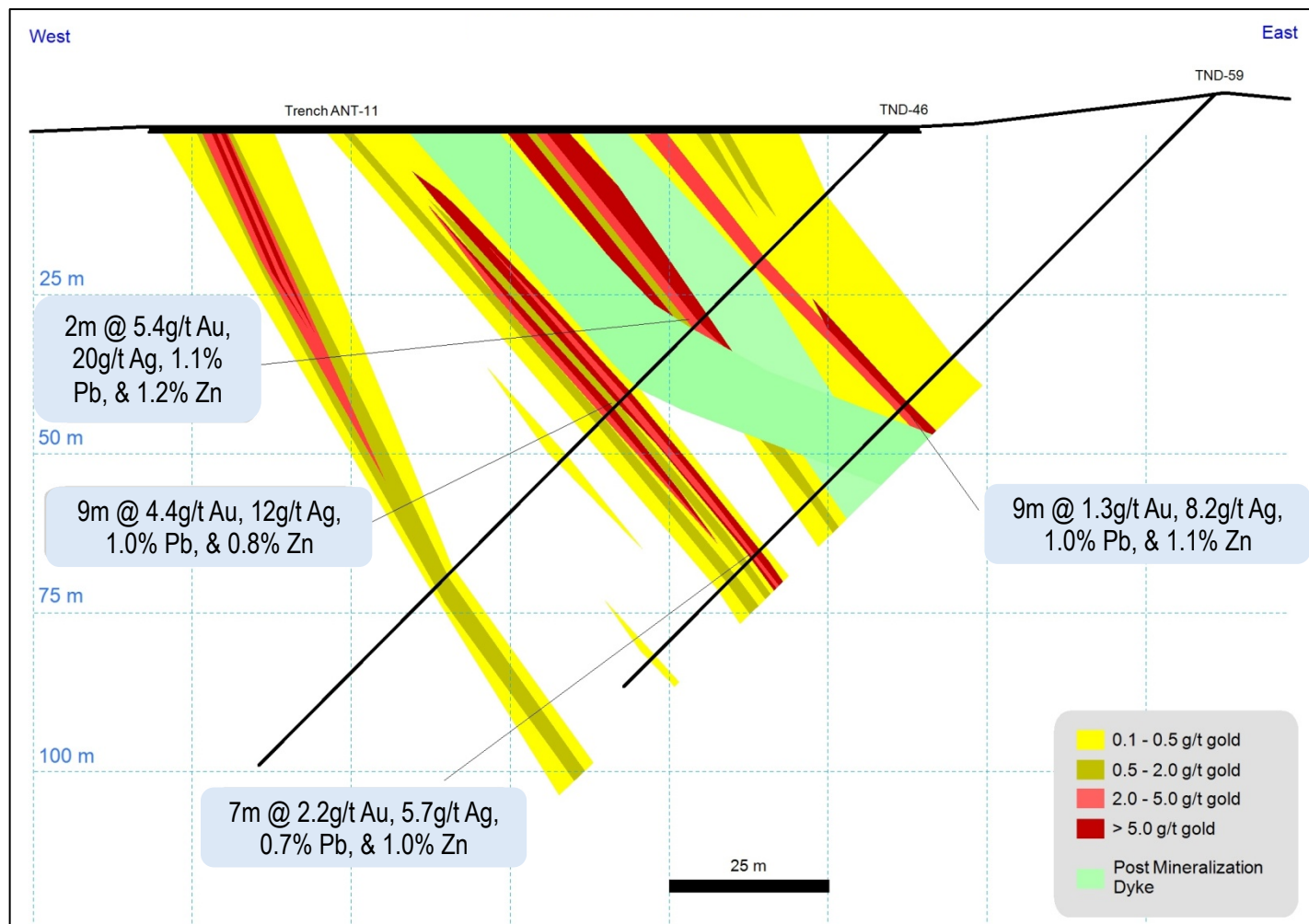


# Altan Nar Gold Project

## Union North – Cross Section



Open at Depth and Along Strike

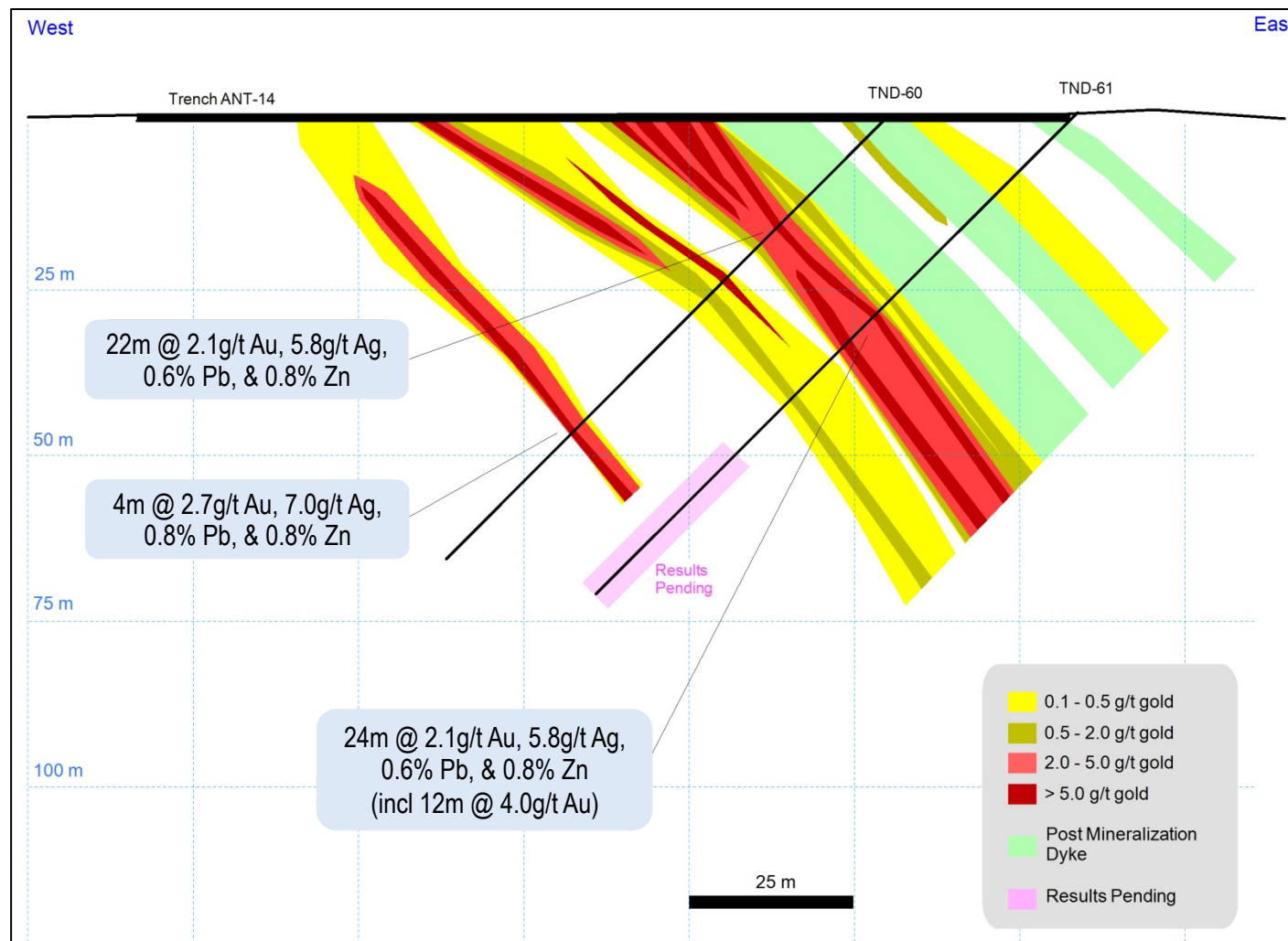


# Altan Nar Gold Project

## Union North – Cross Section



Open at Depth and Along Strike





# Altan Nar Gold Project

## Epithermal Gold, Silver, Lead, Zinc System

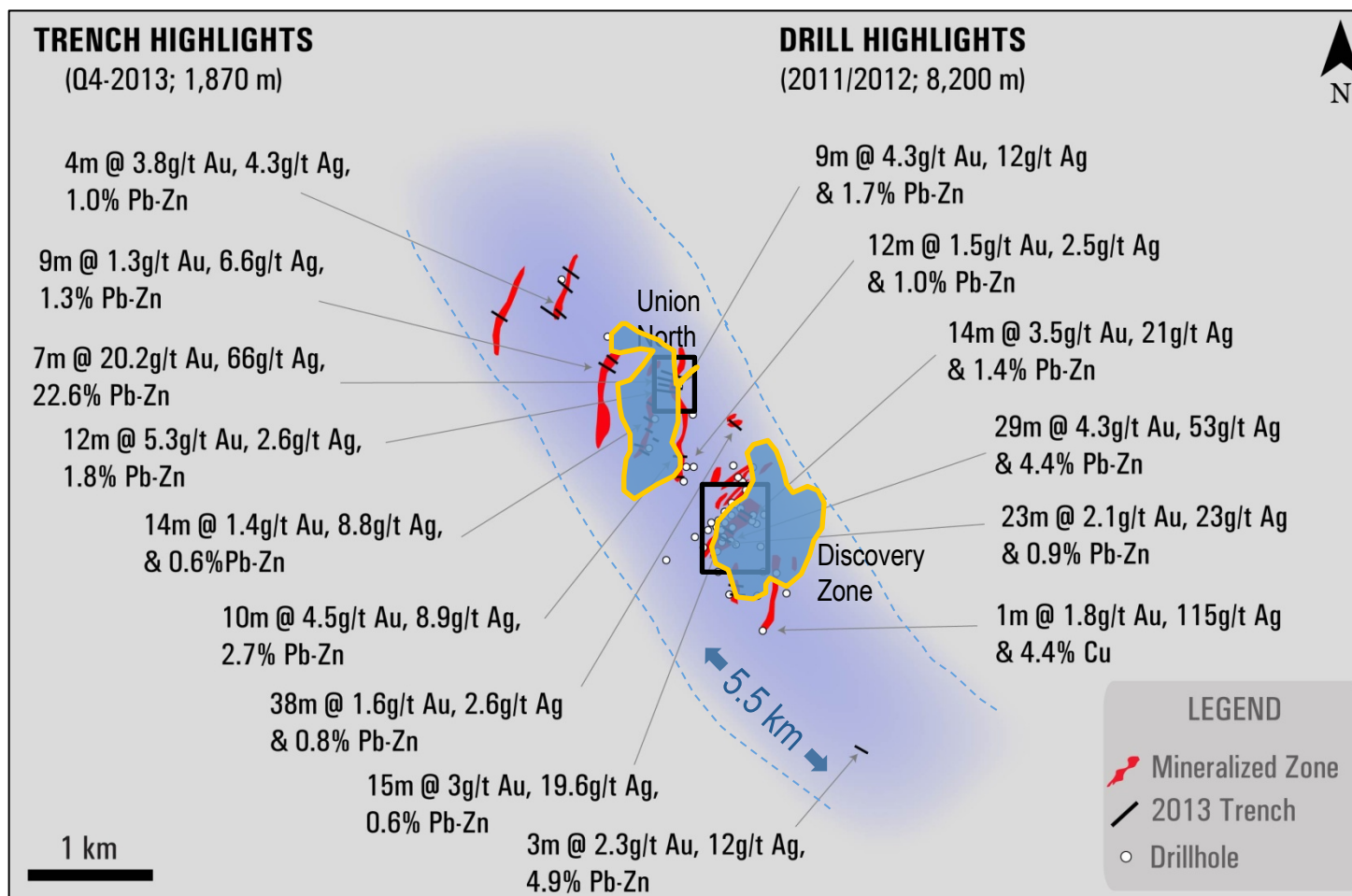


# Altan Nar Gold Project

## Early in Discovery Process



Comparable Scale of one of the world's newest and largest gold mines containing >16M ounces; Area of Open Pit Deposits at Pueblo Viejo owned by Goldcorp and Barrick



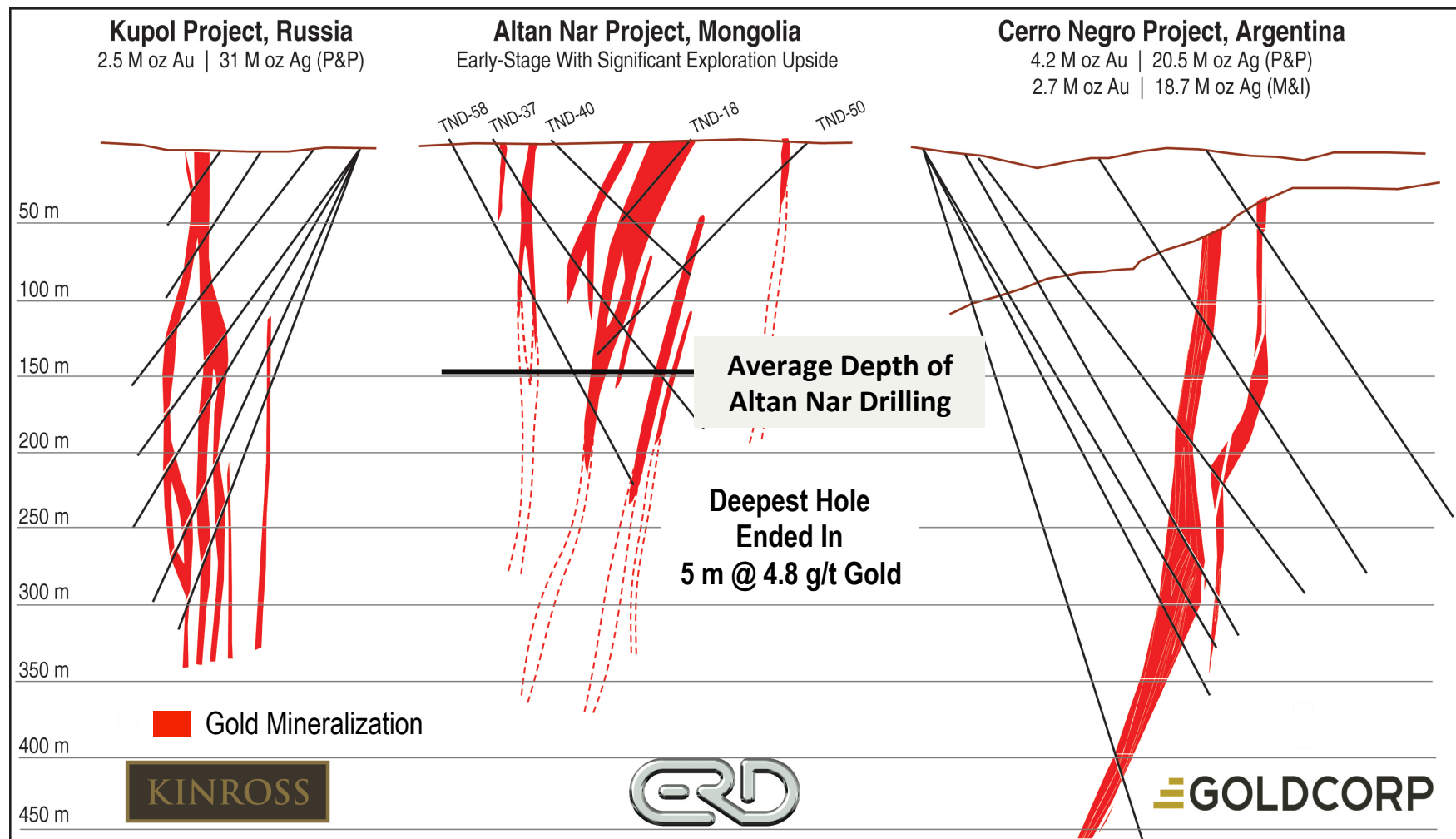


# Altan Nar Gold Project

## Epithermal Deposits – Vertical Depth/Size



High Grade, Steeply Dipping Zones, Open at Depth and Along Strike



# Altan Nar Gold Project

## Metallurgy



- 12 samples of mineralized core were collected from across the deposit area
- Samples collected from the Discovery Zone North, Union North and Union South drill core had an average 24hr gold recovery of 81% using bottle roll testing while samples from Discovery Zone South are more complex
- Demonstrates potential for rapid, high gold recoveries through conventional processing methods

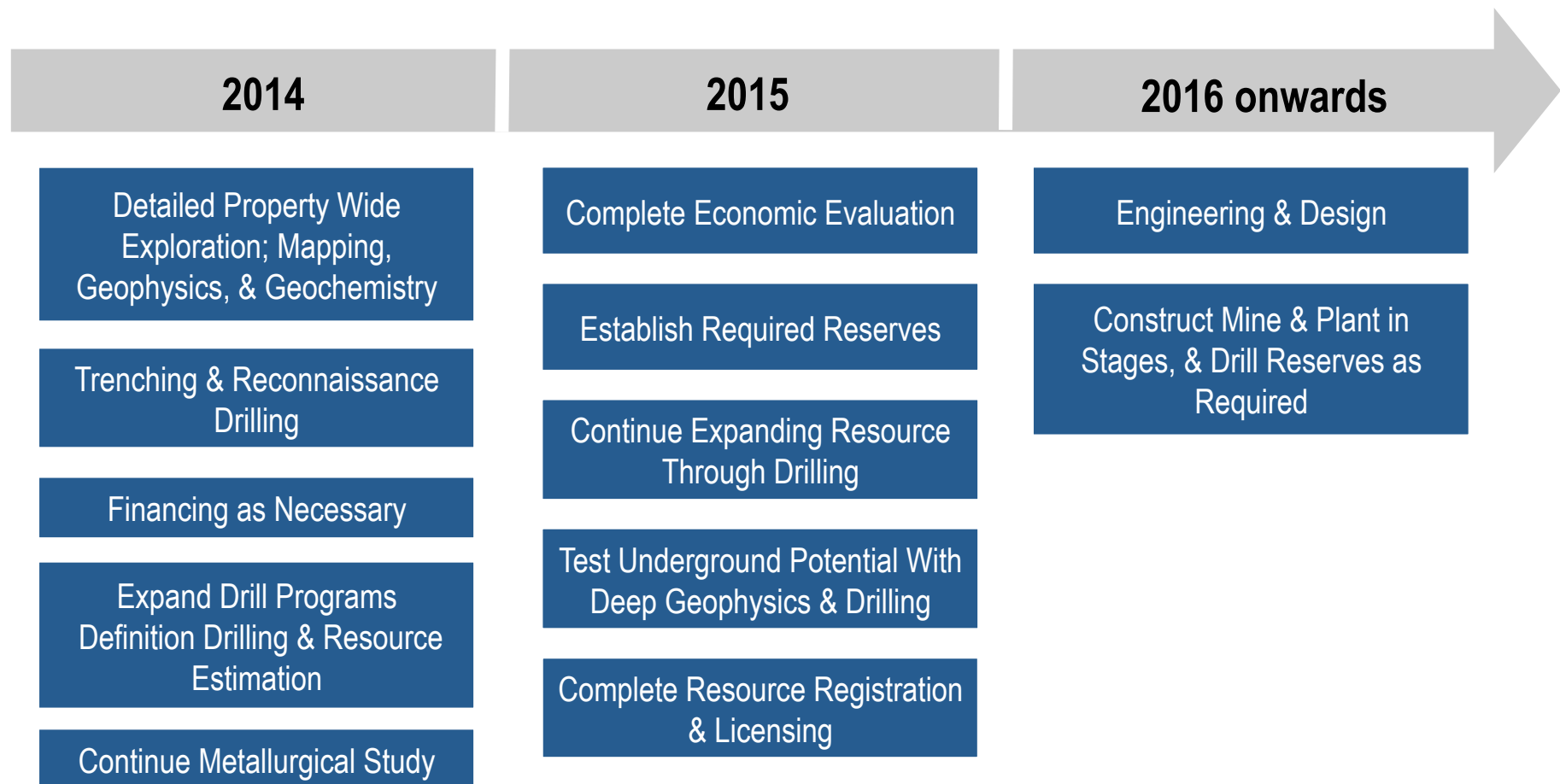


# Altan Nar Gold Project

## Exploration and Development Plan



High Potential for Discovering & Developing Near-Surface, Gold-Polymetallic Deposits





# Altan Nar Gold Project

## Highlights



- “Early in” - A new gold district discovery
- 100% Ownership
- Very large gold system; 5.5 km x 1.5 km; potential for >1.5M ounces
- Excellent exploration upside
- Region of rapidly evolving infrastructure and access in emerging mining district
- Improving investment environment in Mongolia
- Located next door to the world’s largest gold production & consumption region

### Regional Gold Mines

Jinfeng Mine, China, Eldorado Gold



CSH, China, China Gold International



Kumtor Mine, Kyrgyzstan, Centerra

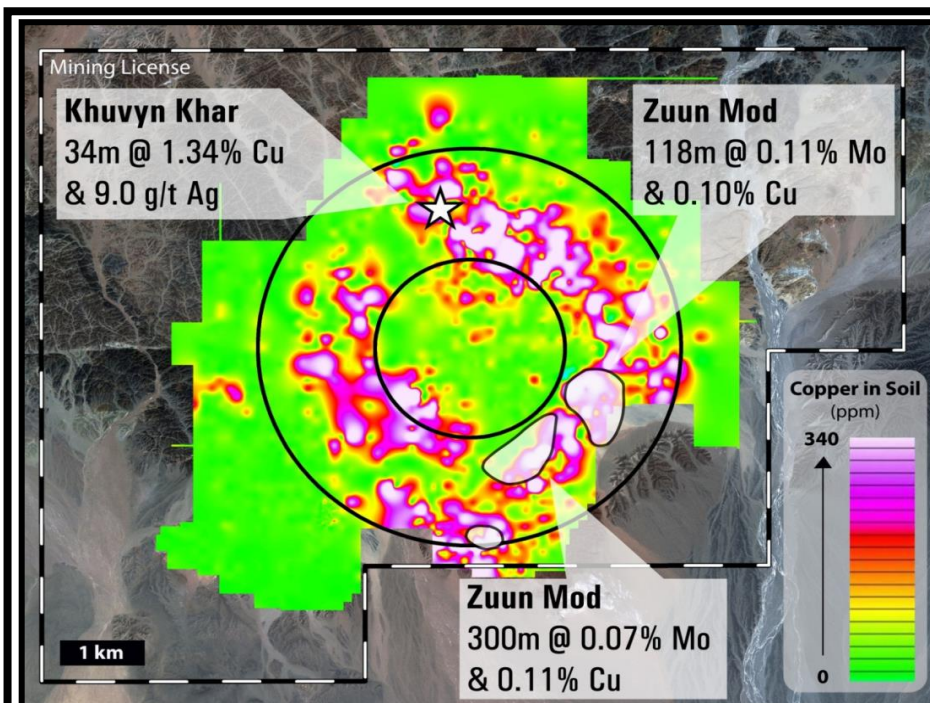


Boroo Mine, Mongolia, Centerra



# Zuun Mod & Khuvyn Khar

World-Class Moly-Copper Project & Porphyry Copper Target



## Zuun Mod 43-101 Resource Estimate

	Tonne	Grade		Contained Metal	
	Mt	% Mo	% Cu	M lb Mo	M lb Cu
M&I	218	0.057	0.069	273	331
Inf	168	0.052	0.065	192	240

## Ownership

- Zuun Mod: 100% Erdene
- Khuvyn Khar: Teck Alliance

## Zuun Mod; molybdenum-copper

- Mining license granted in 2011
- One of Asia's largest Moly deposits
- Drilling includes; 118m @ 0.106% Mo
- Moly prices increasing, >\$13/lb

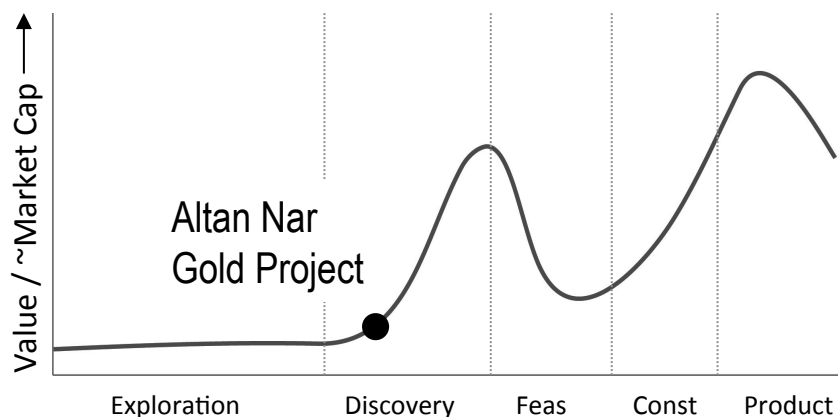
## Khuvyn Khar; copper-silver

- Recent Erdene porphyry discovery
- 2.2 km NW of Zuun Mod
- Teck-Erdene Alliance establishing priority drill targets for 2014

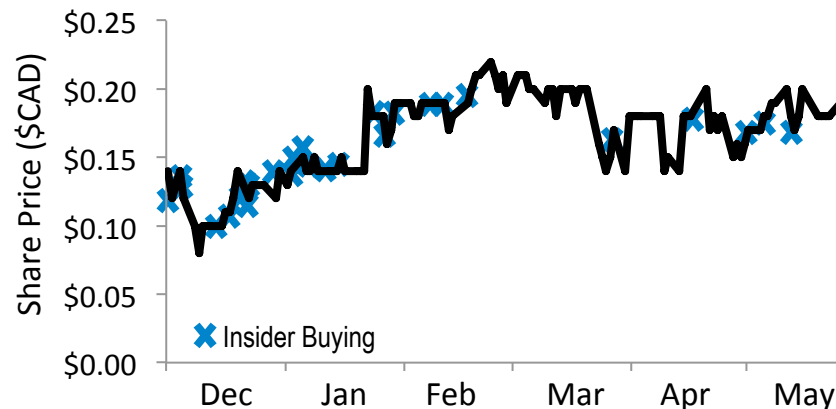
# Erdene Valuation



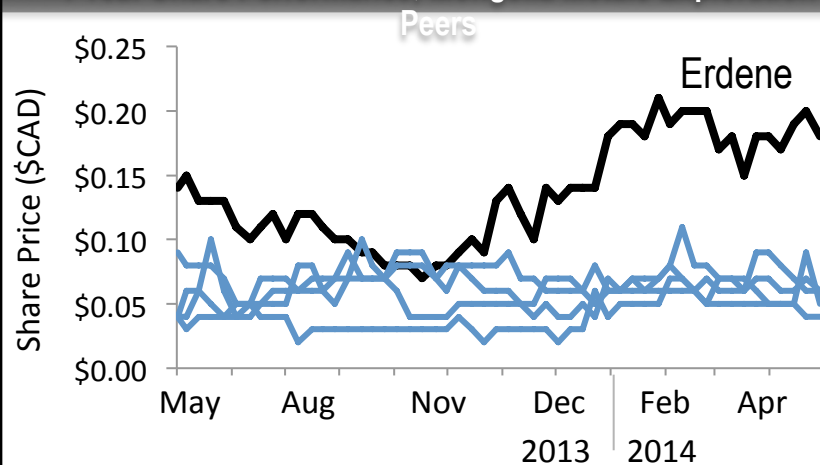
Development Stage of a Successful Mining Company



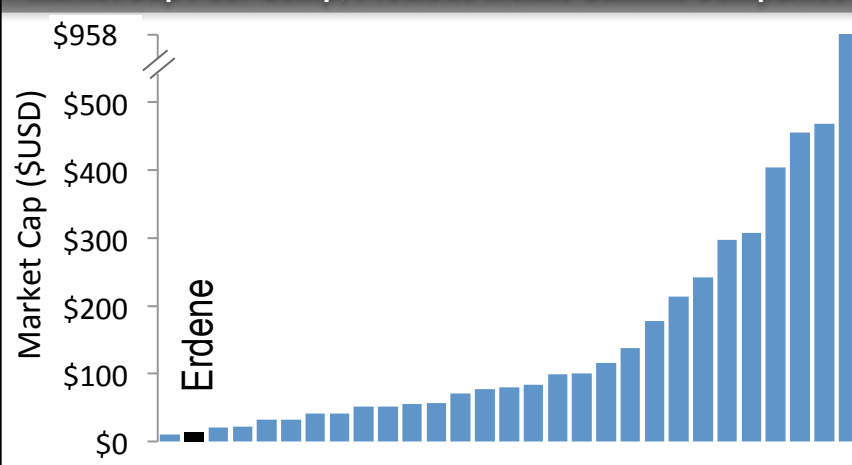
6 Month Insider Buying; Management & Directors Hold >10%



1 Year Share Performance; Mongolia Metals Exploration



Market Cap Peer Comp; Precious Metals Summit Companies



# Erdene's Investment Proposition



New Gold Polymetallic Discovery at Opportune Period in Mining Investment Cycle

---

Tremendous Exploration Potential

---

Upside of Teck Alliance Copper Exploration

---

Sleeper Asset in Zuun Mod Molybdenum Resource

---

Catalysts Include Drill Results & Mongolian events

---

Experienced Mongolia-Focused Exploration Team

## Regional Gold Mines

Jinfeng Mine, China, Eldorado Gold



CSH, China, China Gold International



Kumtor Mine, Kyrgyzstan, Centerra



Boroo Mine, Mongolia, Centerra







# Erdene Resource Development

Peter C. Akerley  
President & CEO, Director

Website [www.erdene.com](http://www.erdene.com)

Email [info@erdene.com](mailto:info@erdene.com)

Twitter [@ErdeneRes](https://twitter.com/ErdeneRes)

TSX: ERD

