



ORBIS
GOLD

High Grade Gold Discoveries

ASX:OBS

**Precious Metals Summit
Colorado
September 2013**



Important Information

Disclaimer

This presentation may contain certain statements and projections provided by or on behalf of Orbis Gold Limited (Orbis) with respect to the anticipated future undertakings. These forward-looking statements reflect various assumptions by or on behalf of Orbis. Accordingly, these statements are subject to significant business, economic and competitive uncertainties and contingencies associated with exploration and/or mining which may be beyond the control of Orbis which could cause actual results or trends to differ materially, including but not limited to price fluctuations, exploration results, reserve and resource estimation, environmental risks, physical risks, legislative and regulatory changes, political risks, project delay or advancement, ability to meet funding requirements, factors relating to property title, native title and aboriginal heritage issues, dependence on key personnel, share price volatility, approvals and cost estimates. Accordingly, there can be no assurance that such statements and projections will be realised. Orbis makes no representations as to the accuracy or completeness of any such statement of projections or that any forecasts will be achieved.

Additionally, Orbis makes no representation or warranty, express or implied, in relation to, and no responsibility or liability is or will be accepted by Orbis or by any of their respective officers, directors, shareholders, partners, employees, or advisers as to or in relation to the accuracy or completeness of the information, statements, opinions or matters (express or implied) arising out of, contained in or derived from this presentation or any omission from this presentation or of any other written or oral information or opinions provided now or in the future to any interested party or its advisers. In furnishing this presentation, Orbis undertakes no obligation to provide any additional or updated information whether as a result of new information, future events or results or otherwise.

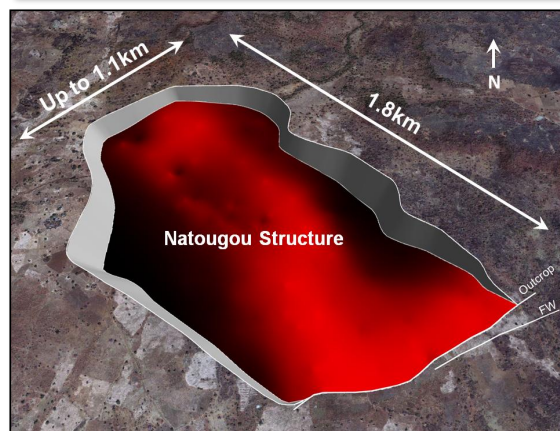
Nothing in this material should be construed as either an offer to sell or a solicitation of an offer to buy or sell securities. It does not include all available information and should not be used in isolation as a basis to invest in Orbis Gold Limited.

This presentation is not a prospectus and does not constitute or form part of any offer, invitation or recommendation in respect of securities, or an offer, invitation, recommendation to sell, or a solicitation of any offer to buy, securities in the United States or to, or for the account or benefit of, any person in the United States, or in any other jurisdiction in which, or to any person to whom, such an offer would be illegal. No action has been or will be taken to register, qualify or otherwise permit a public offering of the securities in any jurisdiction. New shares and options in Orbis Gold Limited have not been, nor will be, registered under the U.S. Securities Act of 1933 (U.S. Securities Act) or the securities laws of any state or other jurisdiction of the United States. Accordingly, new shares and options in Orbis Gold Limited may not be offered or sold, directly or indirectly, in the United States, unless they have been registered under the U.S. Securities Act, or are offered and sold in a transaction exempt from, or not subject to, the regulation requirements of the U.S. Securities Act and any other applicable securities laws. The distribution of this presentation outside Australia may be restricted by law and any such restrictions should be observed. This Presentation may not be publically released or distributed in the United States.



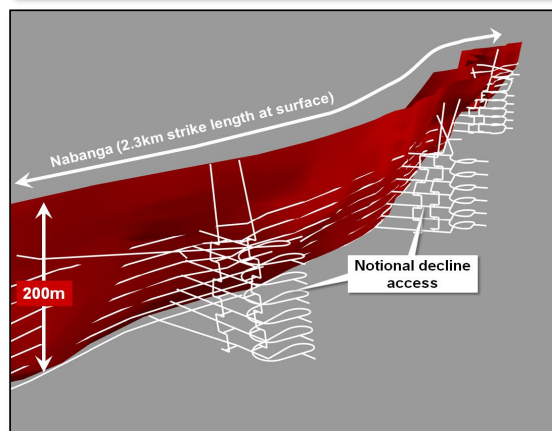
Orbis Key Assets - Burkina Faso

Natougou



- **1.8Mozs / 3.7g/t Au⁽¹⁾**
(Indicated Mineral Resource
1.2 Mt @ 5.2g/t Au for 0.20 Mozs Au)
(Inferred Mineral Resource
14 Mt @ 3.5g/t Au for 1.6 Mozs Au)
- **Scoping study in progress** (assessing large-scale open pit mine development)

Nabanga



- **0.66Mozs / 6.5g/t Au⁽²⁾**
(Inferred Mineral Resource)
- **Internal scoping study in progress** (assessing combined open pit and underground development)

Exploration



- **~4,000km² permit area**

Bantou discovery

- 11m @ 11.73g/t Au
- 8m @ 80.32g/t Au

Tankoro discovery

- 8m @ 2.90g/t Au
- +600m strike length



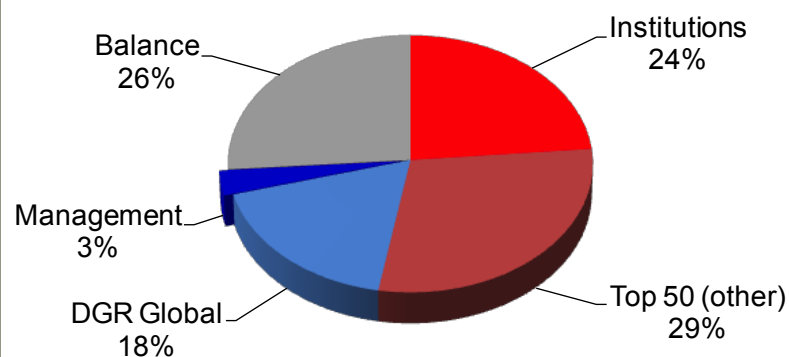
(1) Reported above an 0.5g/t Au lower cut-off grade.
(2) Reported above an 0.5g/t Au lower cut-off grade and >1.5m minimum horizontal width.

Orbis - Shareholder / Financial Overview

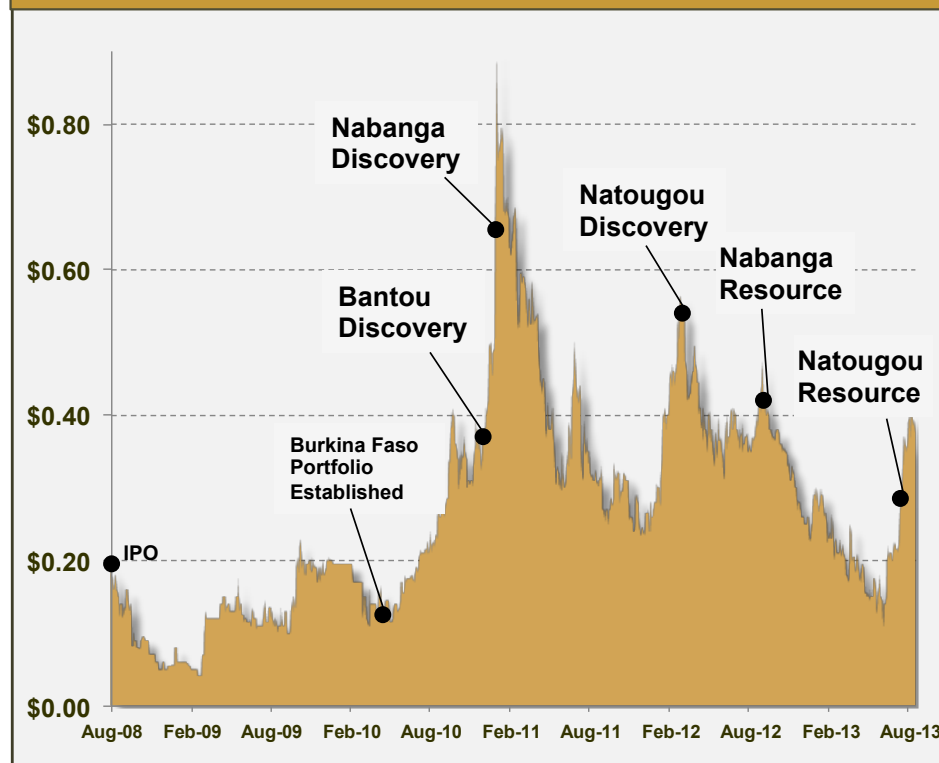
Capital Structure

ASX Code:	OBS
Shares (ordinary):	219.0m
Options (unlisted):	8.8m
Share Price:	37.5 cents ⁽¹⁾
Market Capitalisation:	A\$82m
Cash:	A\$9.4m ⁽²⁾

Share Register ⁽³⁾



Share Price (A\$)



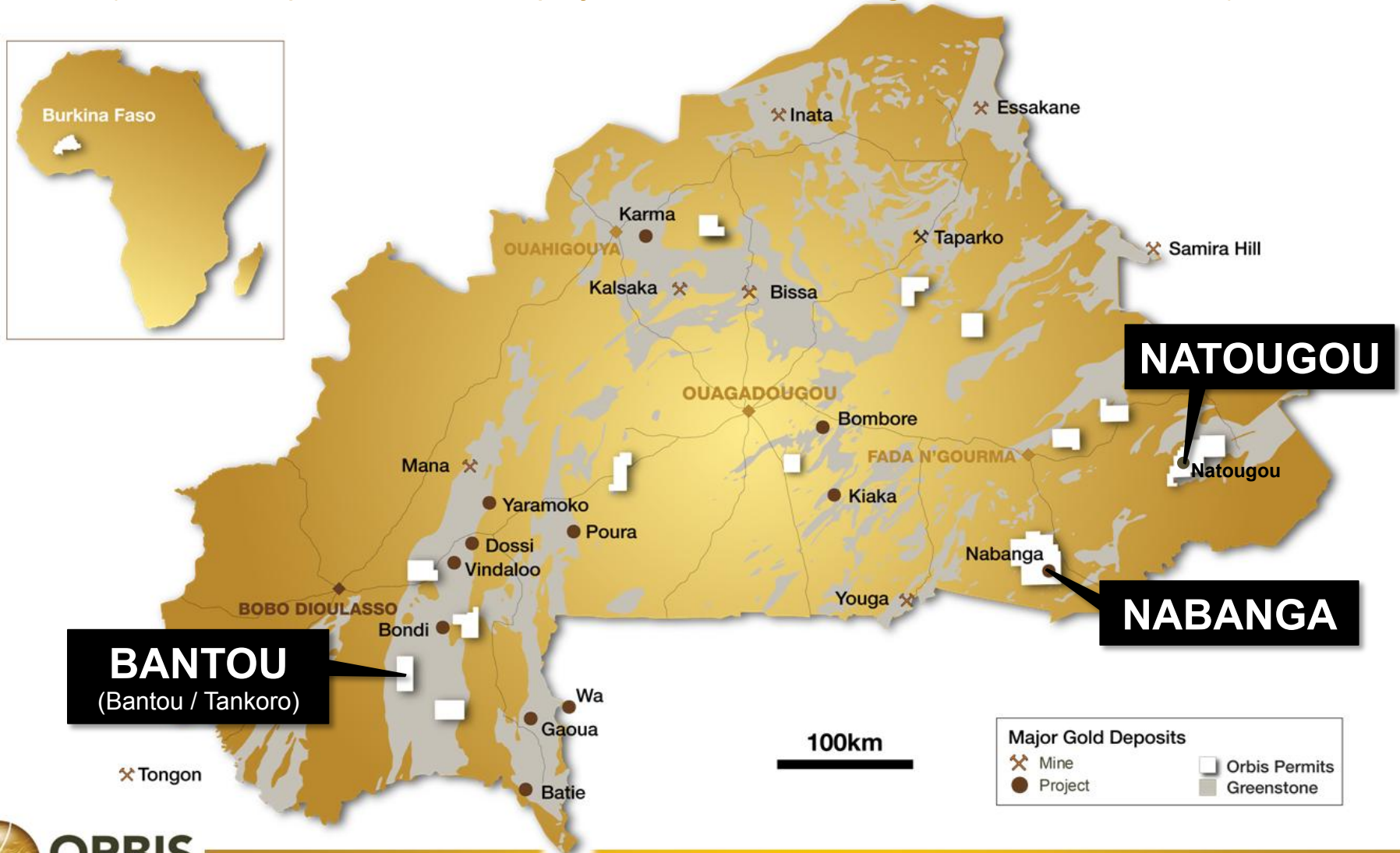
(1) As at 9th September 2013.

(2) As at 30th June 2013 (unaudited).

(3) As at 6th March 2013 (unaudited).

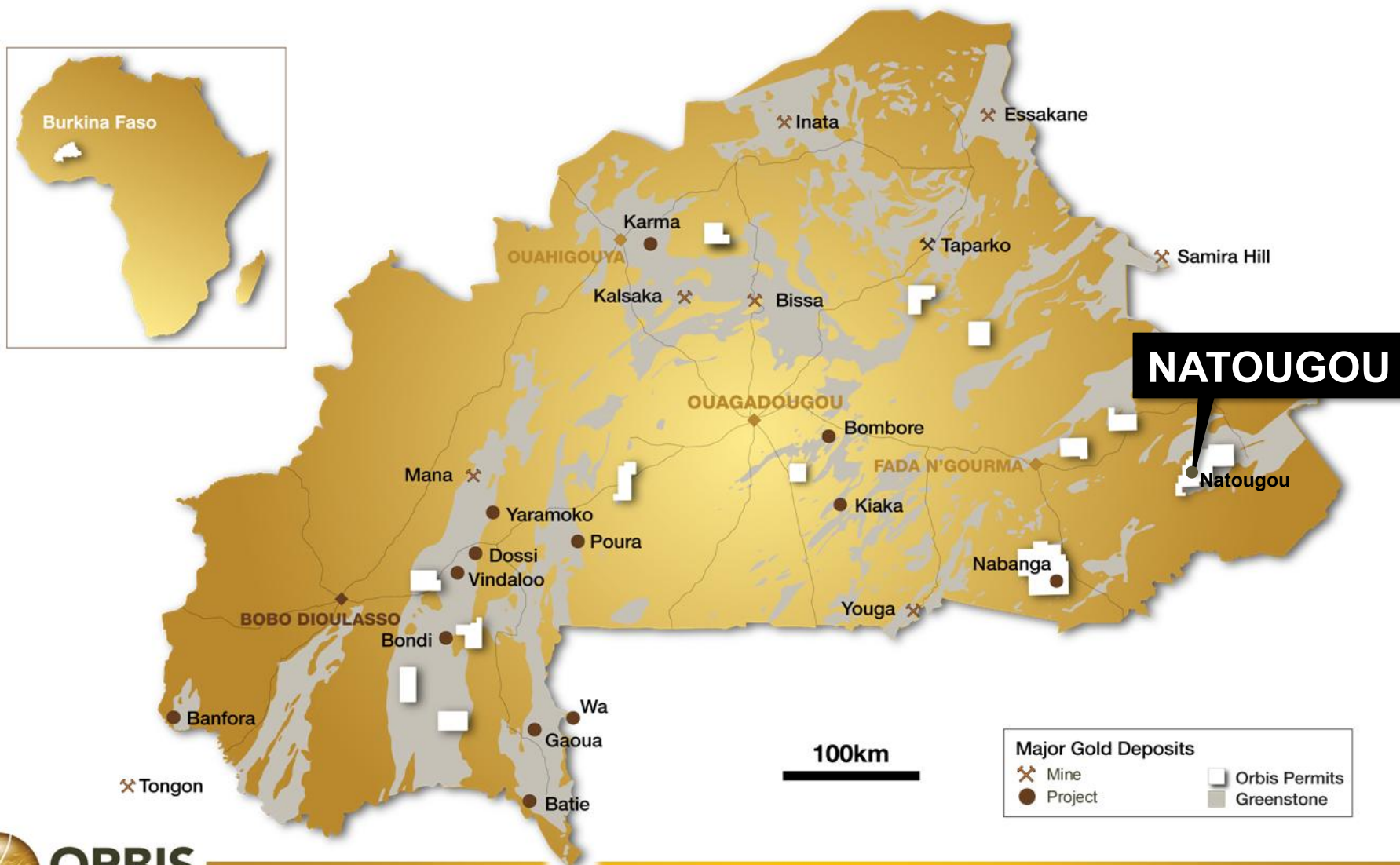
Orbis Exploration Permits - Burkina Faso

(~4,000km² permit area⁽¹⁾ - 4 project areas drilled - 4 gold discoveries to date)

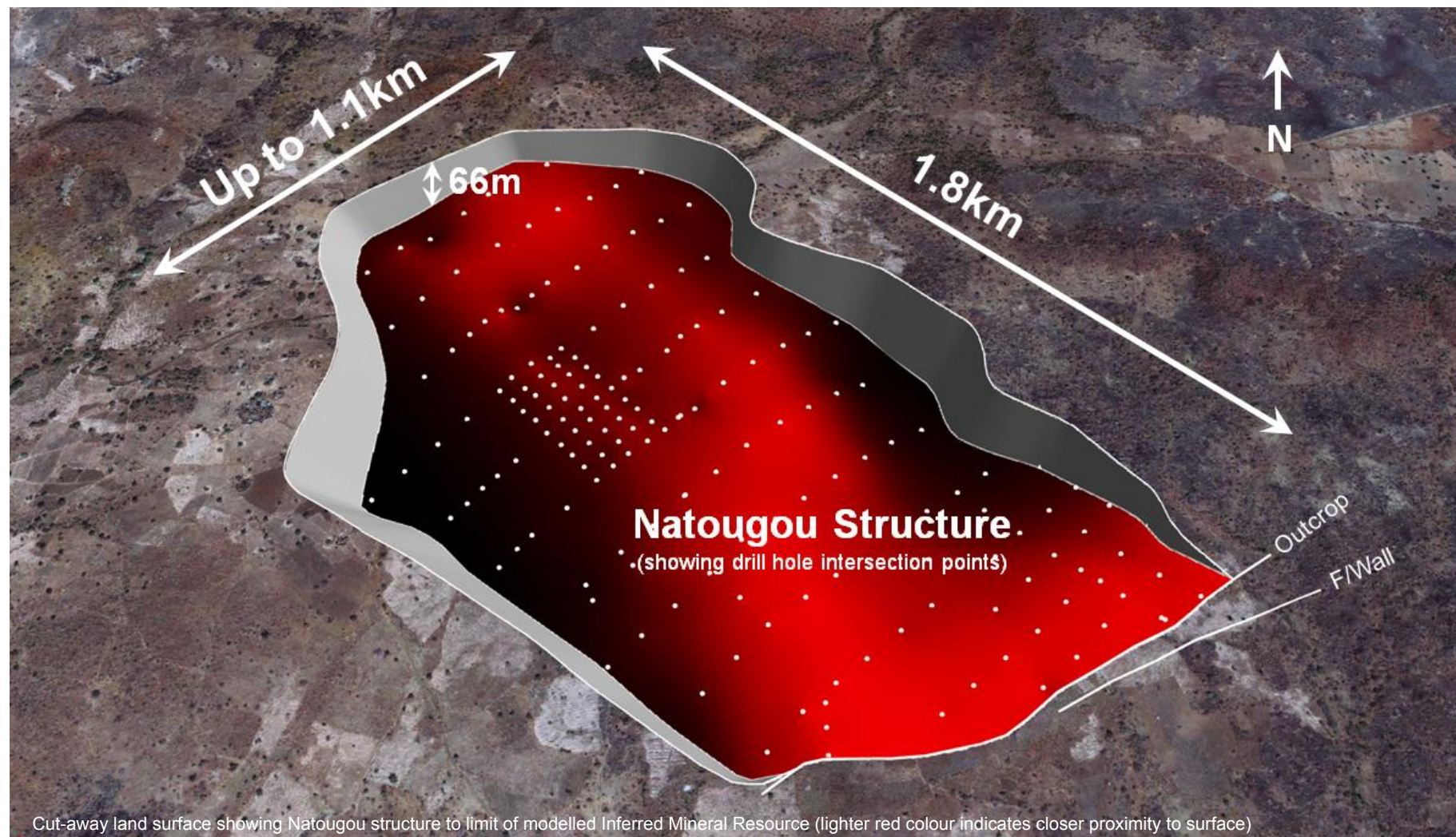


(1) Permits held under 3 and 4 year option agreements to purchase 100% interest, 4 permits held 100% by Orbis.

Natougou – Significant New Gold Discovery

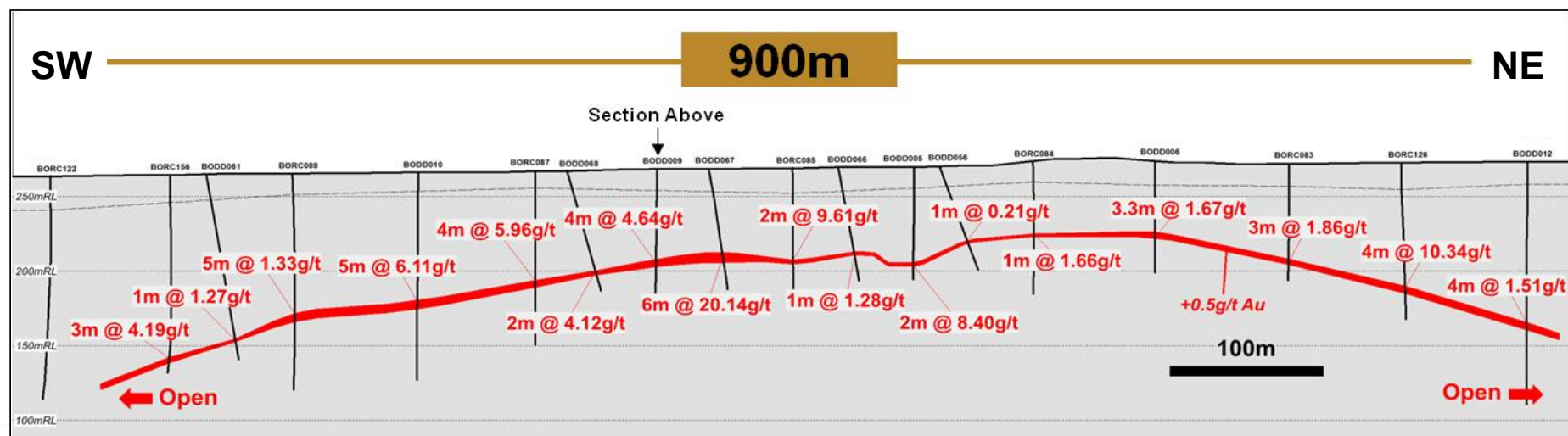
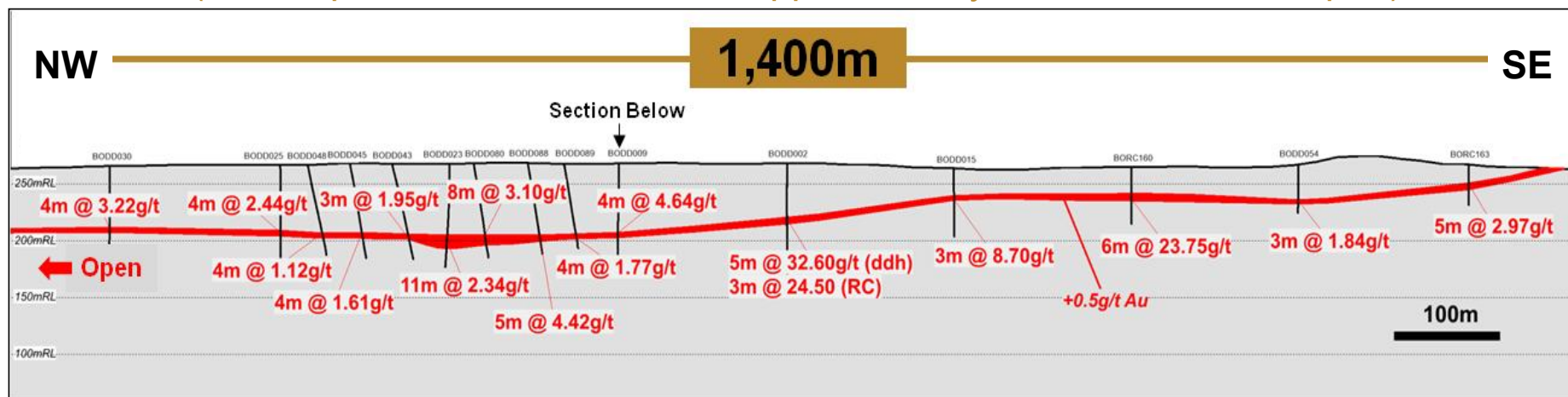


Natougou – Large-Scale Near-Surface Deposit



Natougou – Simple Geometry

(Outcrops at surface – drilled to approximately 140m maximum depth)



Note – Drill hole intersection lengths shown are down hole lengths.

Natougou - Maiden Resource Estimate

(Natougou is a significant new high grade gold discovery)

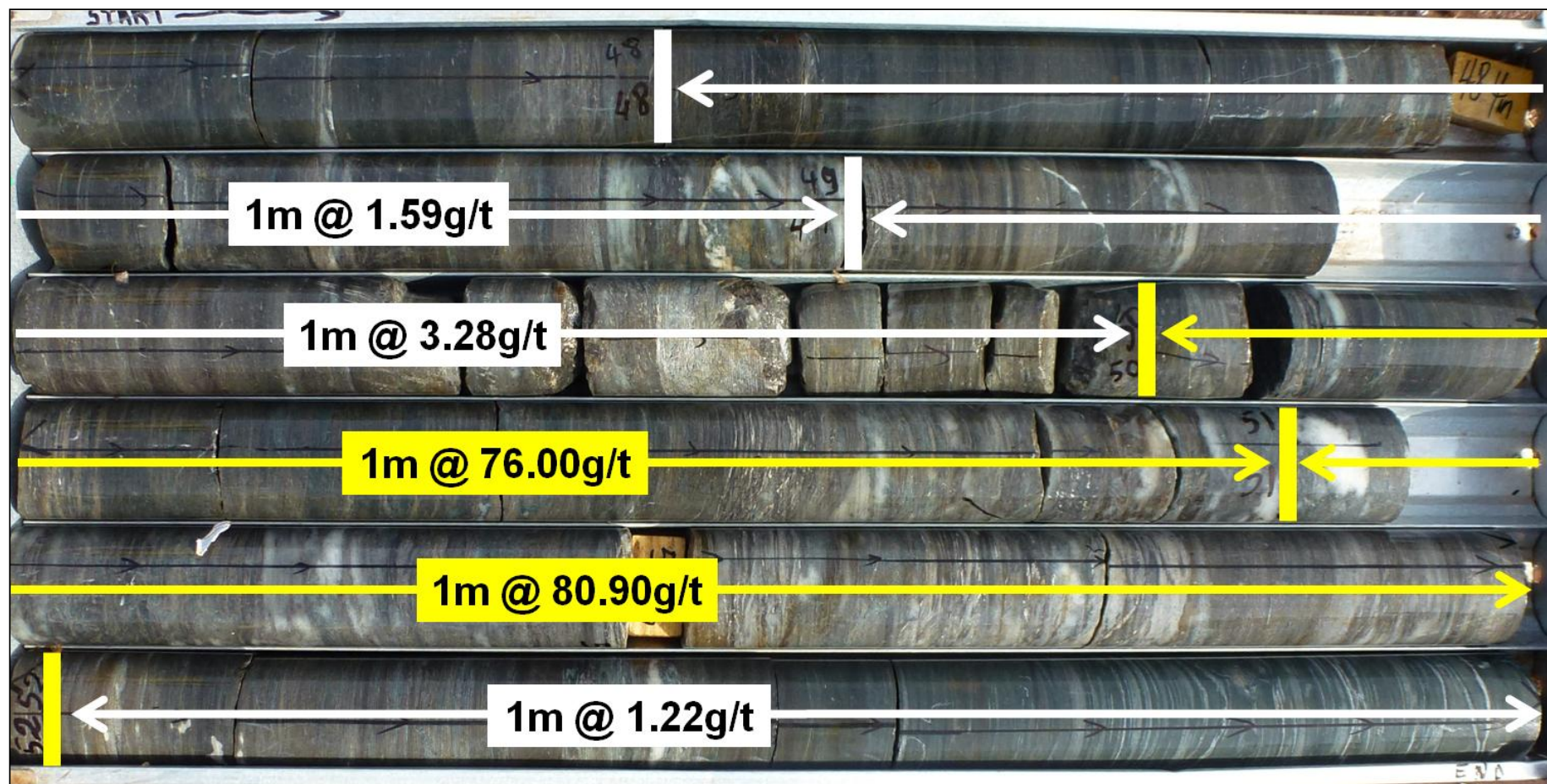
Category	Tonnes (Mt)	Grade (g/t Au)	Ounces (Mozs)
Indicated ⁽¹⁾	1.2 Mt	5.2g/t	0.20 Mozs
Inferred ⁽¹⁾	14 Mt	3.5g/t	1.6 Mozs
Total⁽¹⁾	15 Mt	3.7g/t	1.8 Mozs



(1) Mineral Resource reported above an 0.5g/t Au lower cut-off grade.

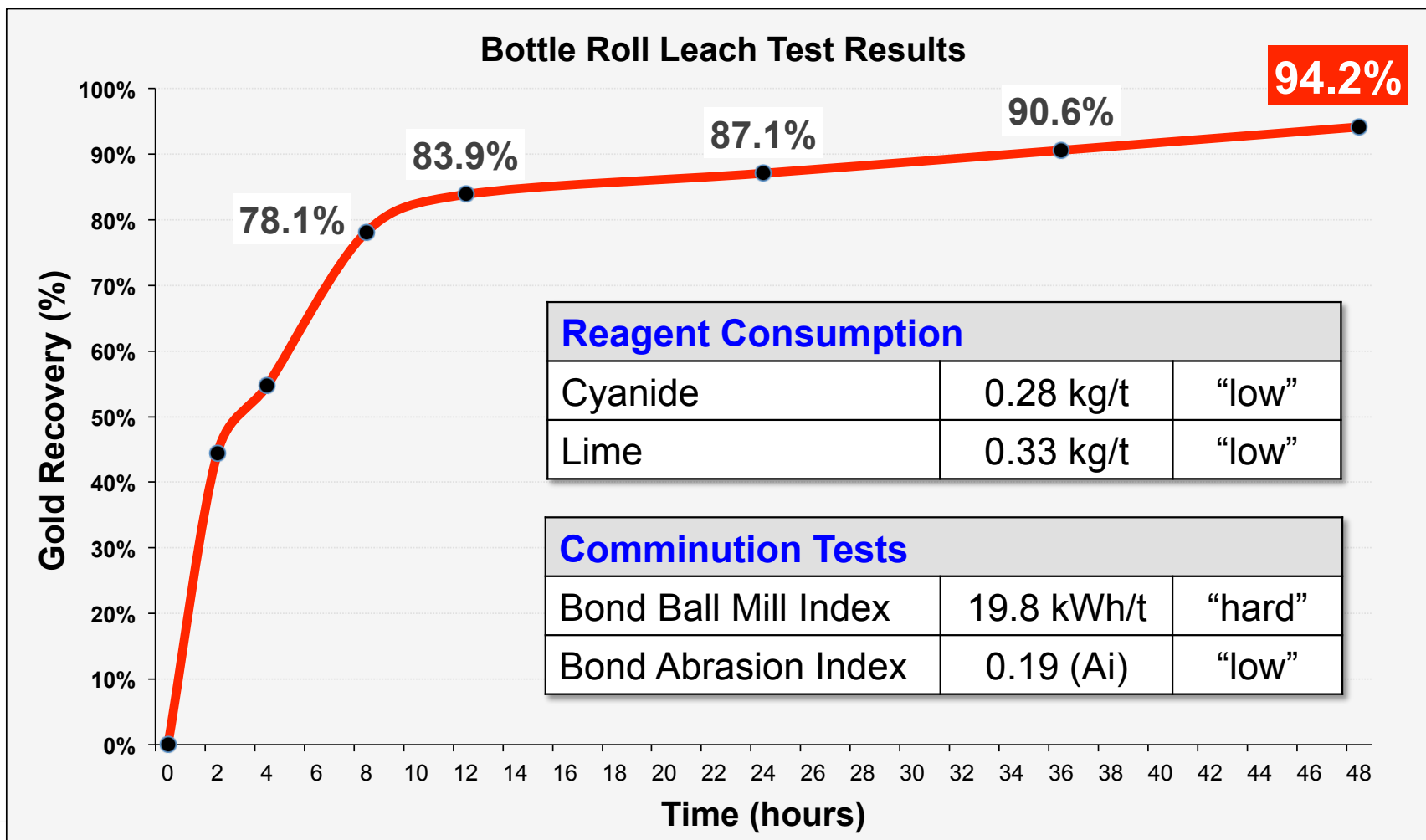
Natougou – 5.0m @ 32.60g/t Au

(Diamond drill hole BODD002 – flat-lying quartz-sulphide lode – includes 2.0m @ 78.45g/t Au)








Natougou – Simple Metallurgy⁽¹⁾

(Metallurgical test results indicate Natougou mineralisation is amenable to conventional CIL processing)



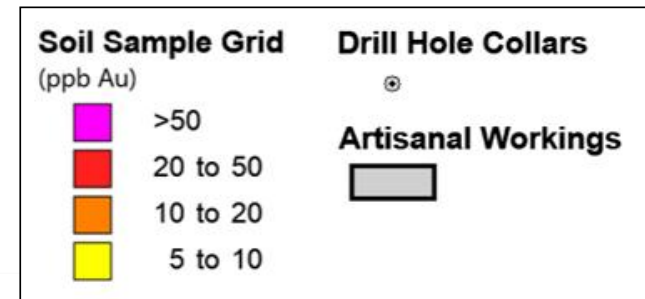
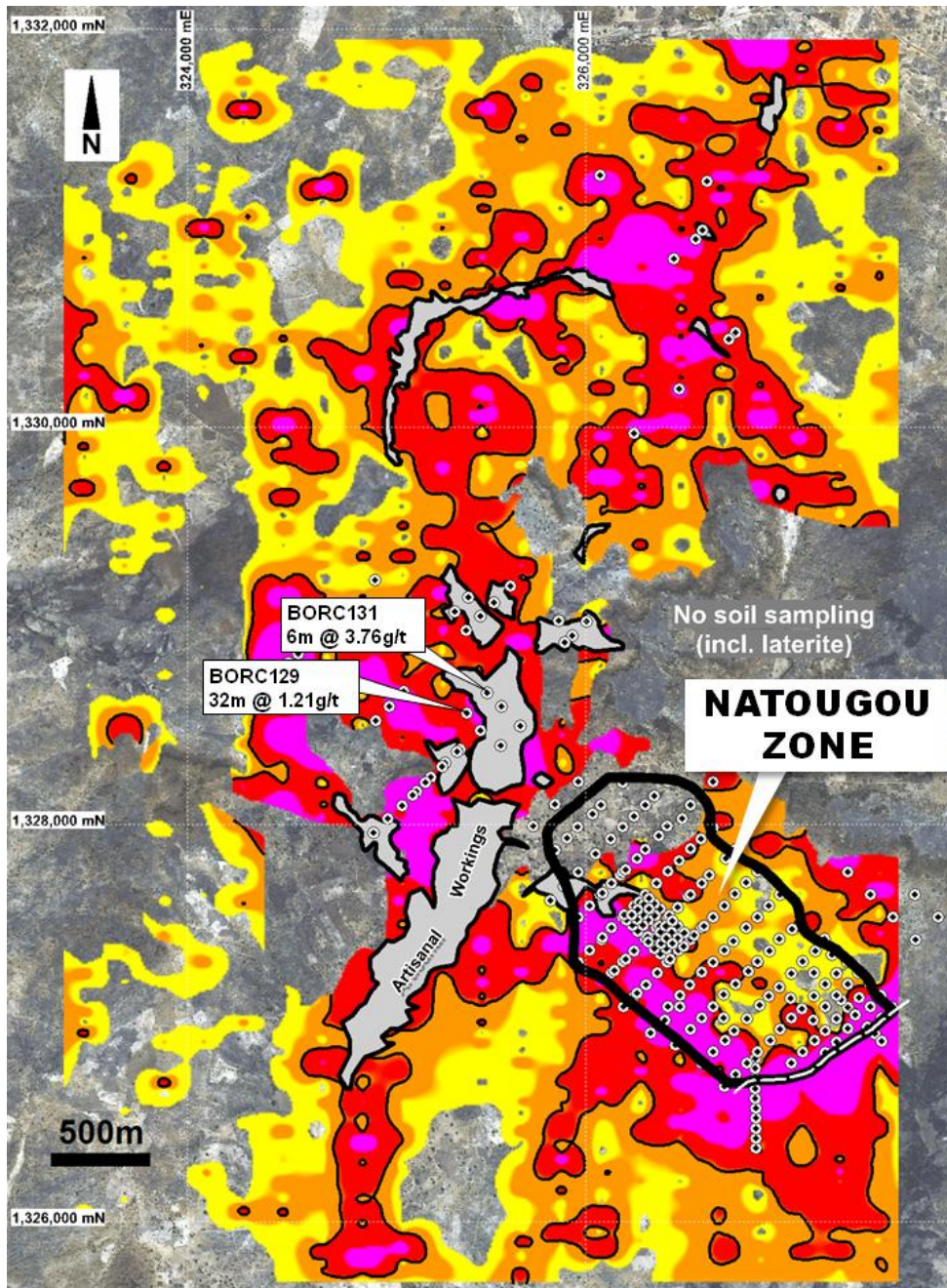
Natougou – Forward Plan

- ✓ Maiden resource drill-out completed
- ✓ Maiden Mineral Resource estimate 
- ✓ Recovery test-work completed 
- Development Scoping Study nearing completion
 - Study manager / Processing 
 - Infrastructure 
 - Mine design 
- Ongoing regional exploration programs

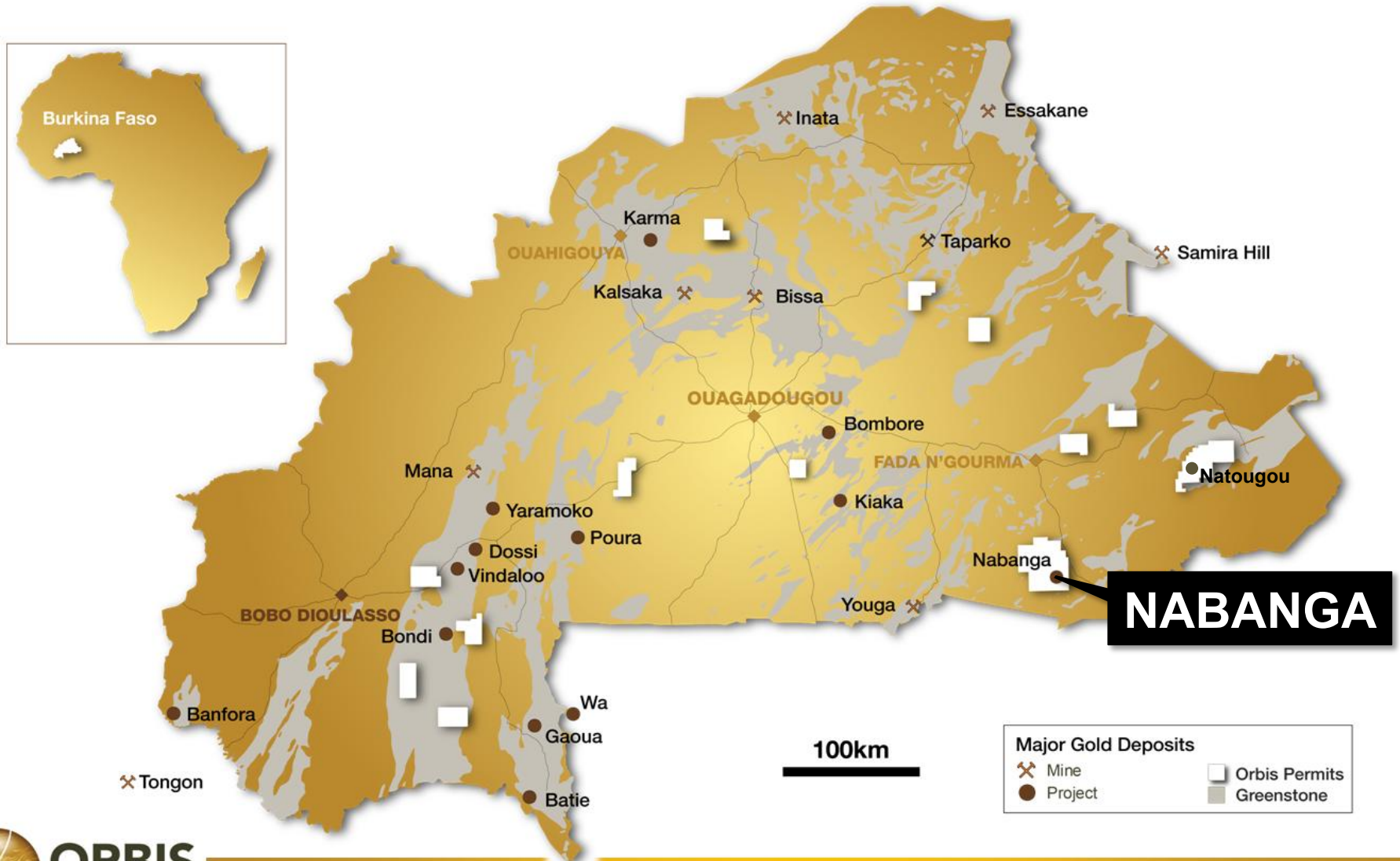
“One of the most significant new gold discoveries made in Burkina Faso over the past decade”

Natougou Exploration Upside

- Natougou “open” at limit of current drilling
- F/wall and h/wall structures not yet included in resource estimate
- Extensive gold-in-soil anomalies
- 7km x up to 4km @ +20ppb Au
- Multiple gold “trends”
- Significant step-out drill targets



Nabanga – High Grade Gold Discovery



Nabanga – A High Grade Gold System

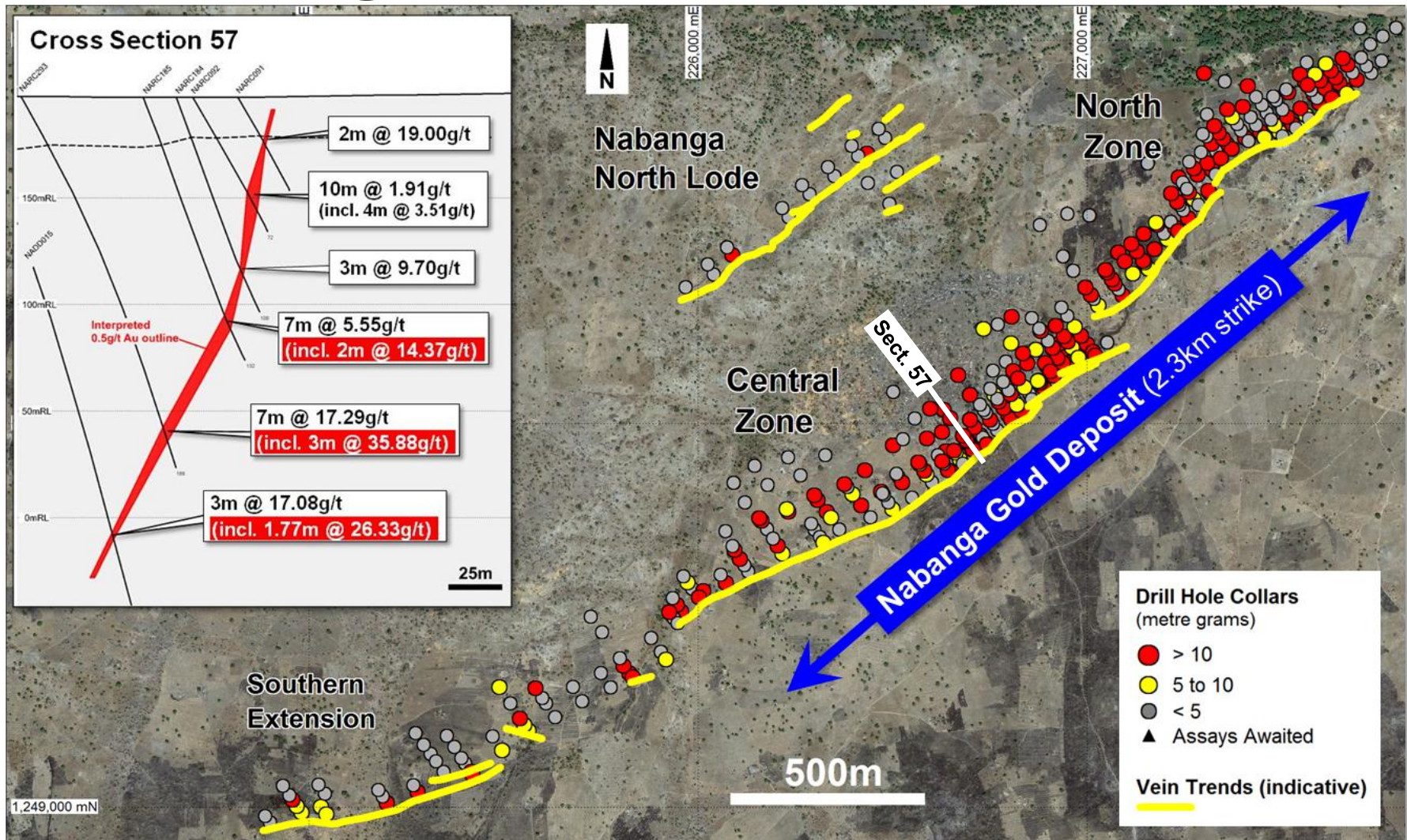
(“Intrusion-related” gold deposit – granodiorite host and Au-Ag-Te +/- Bi assemblage)



Hole ID	Intersections*	From (m)
NARC091	2m @ 19.00g/t	24
NARC100	3m @ 20.49g/t	72
NARC114	10m @ 17.70g/t	51
NARC135	5m @ 22.99g/t	74
NARC139	3m @ 20.77g/t	33
NARC151	3m @ 20.12g/t	110
NARC172	6m @ 14.44g/t	49
NARC173	6m @ 48.48g/t	74
NARC174	5m @ 26.34g/t	87
NARC190	3m @ 23.46g/t	105
NARC199	4m @ 17.25g/t	28
NARC216	8m @ 12.68g/t	148
NARC218	5m @ 15.62g/t	112
NARC254	6m @ 11.21g/t	145
NARC293	7m @ 17.29g/t	169
NARC300	11m @ 10.52g/t	114
NARC319	3m @ 22.65g/t	78
NARC323	8m @ 18.13g/t	116
NARC327	3m @ 34.75g/t	172
NARC330	10m @ 32.90g/t	167

* Selection of high grade RC drill intersections reported above an 0.5g/t Au cut-off grade. Lengths are down hole lengths.

Nabanga Gold Deposit – Overview

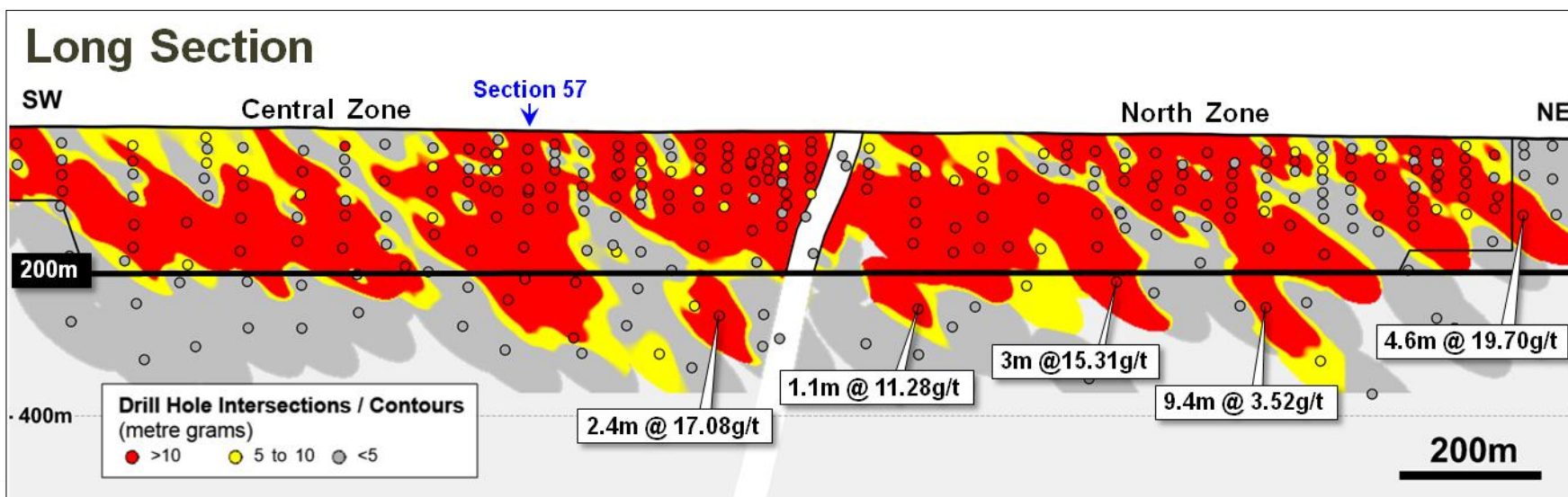


Nabanga - Maiden Resource Estimate

Nabanga – Inferred Mineral Resource⁽¹⁾

Cut-off Grade	Tonnes	Grade	Ounces
0.0g/t Au	4.8Mt	4.4g/t Au	679,000ozs
0.5g/t Au	3.2Mt	6.5g/t Au	660,000ozs
5.0g/t Au	1.8Mt	10.0g/t Au	573,000ozs

High proportion of ounces retained at higher cut-off grade



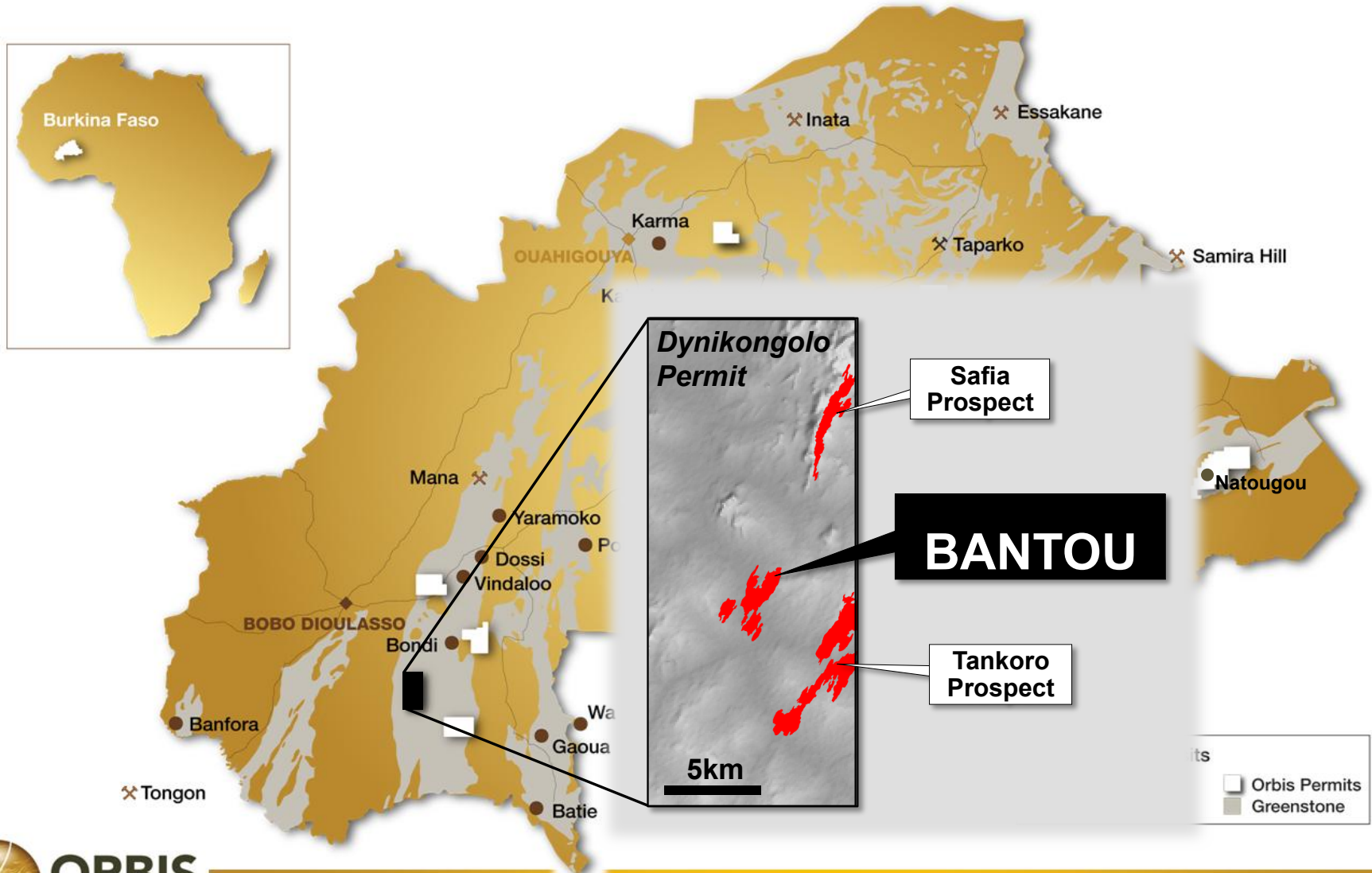
(1) Reported Inferred Mineral Resource figures based on a 1.5m minimum horizontal width. Drill hole intersection lengths shown are down hole lengths.

Nabanga – Forward Plan

- ✓ Maiden resource estimate completed
- Internal scoping study in progress assessing combined open pit and underground development
- Key focus areas:
 - selective underground mining methods
 - open pit / underground transition
 - recovery optimisation
- Ongoing regional exploration (~1,000km² permit area)

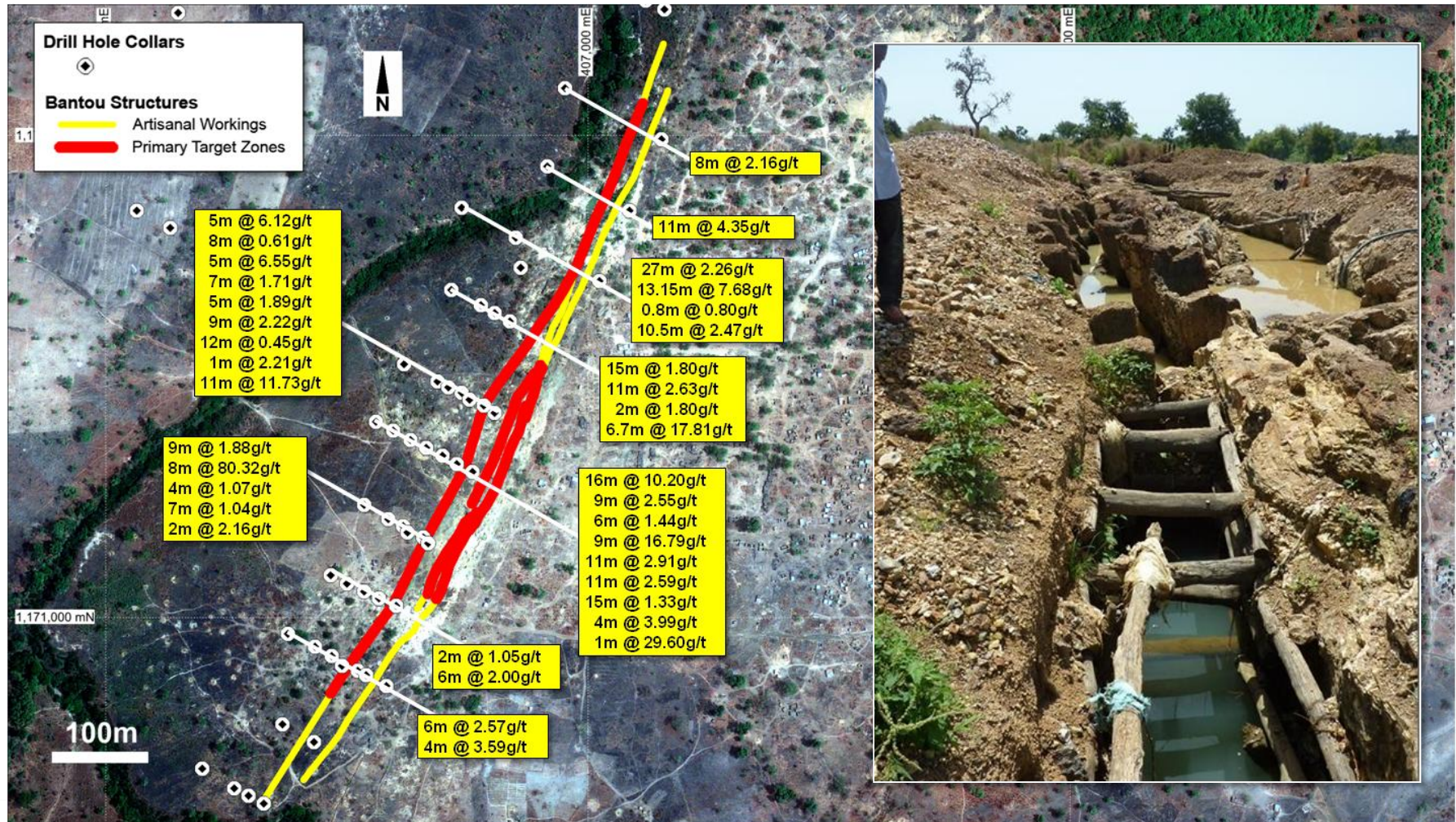
“One of the highest grade gold deposits discovered to date in West Africa”

Bantou Project – “Discovery Pipeline”



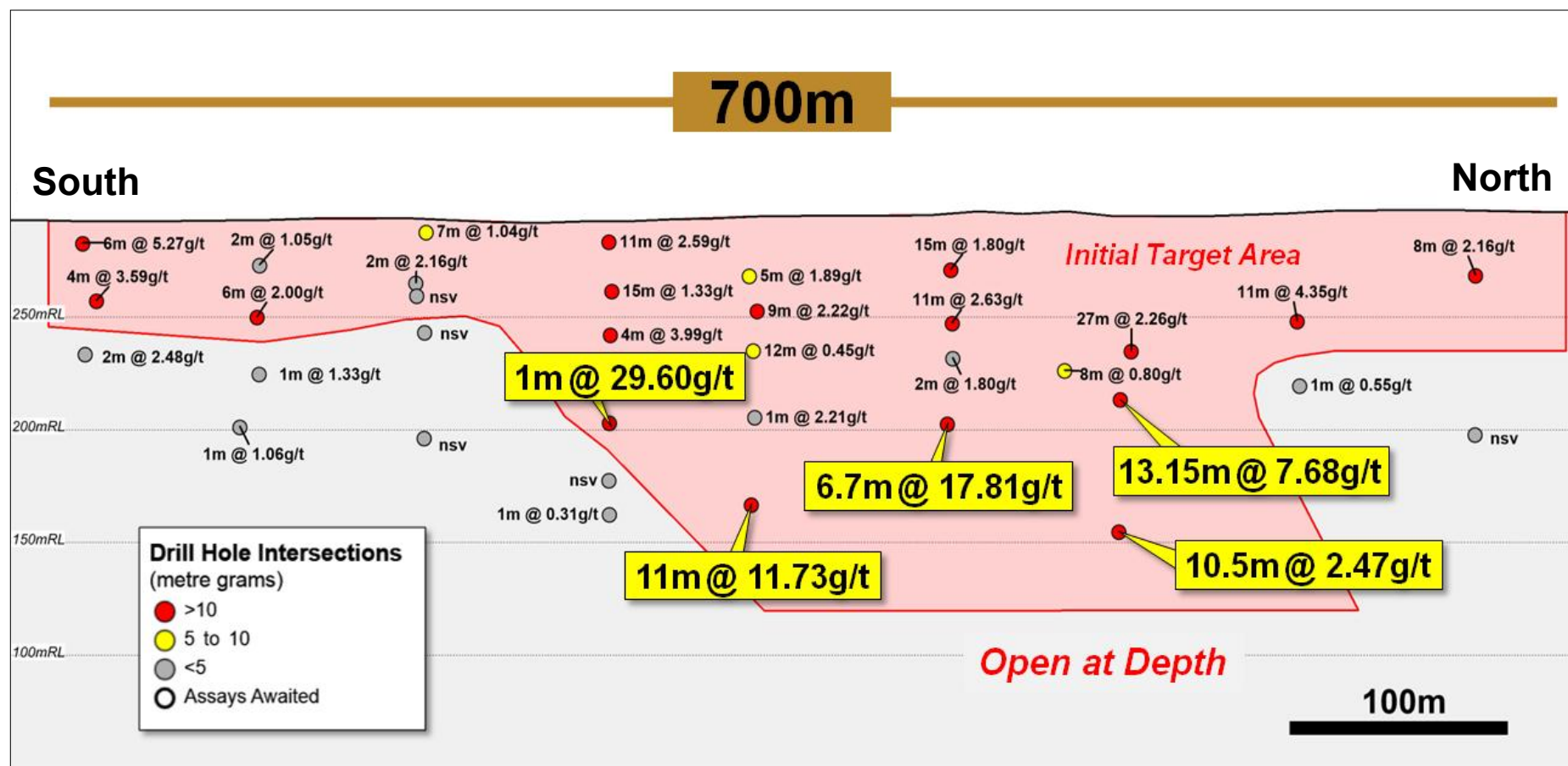
Bantou – Multiple Structures / 1km Strike

(Multiple gold mineralised structures defined / high grade gold mineralisation from surface)



Bantou Long Section (Hangingwall Lode)

(Gold mineralisation defined over a 700m strike length – High grade mineralisation open at depth)

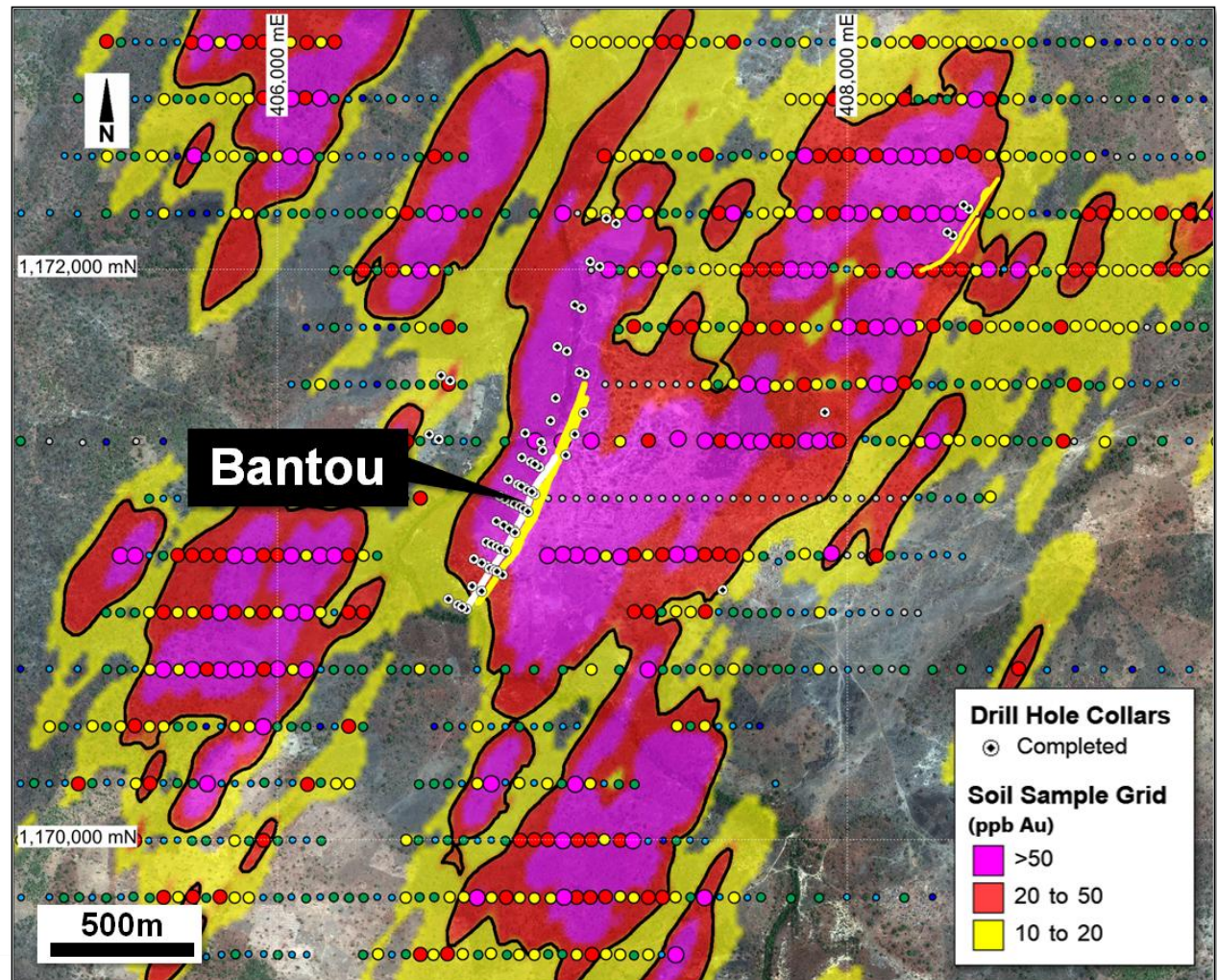
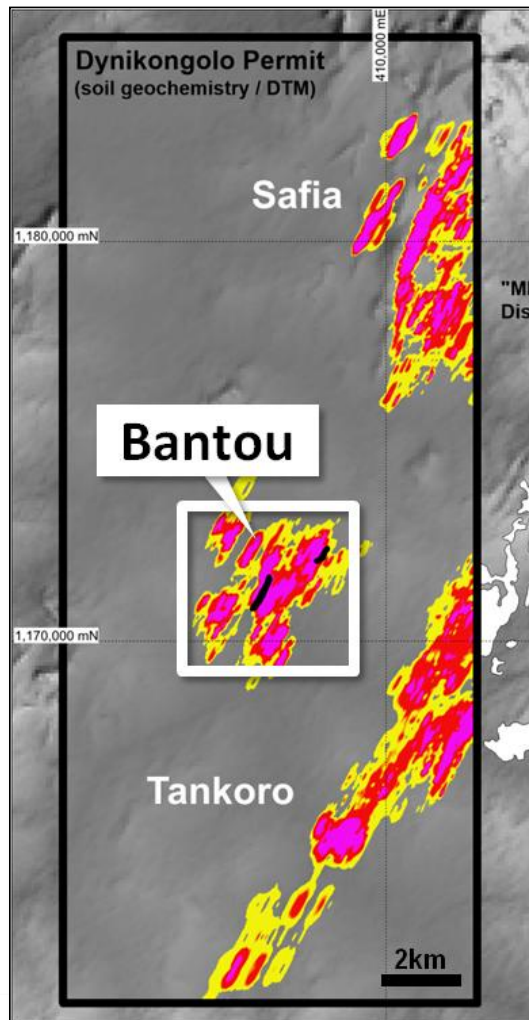


Bantou – Visible Gold in Diamond Core



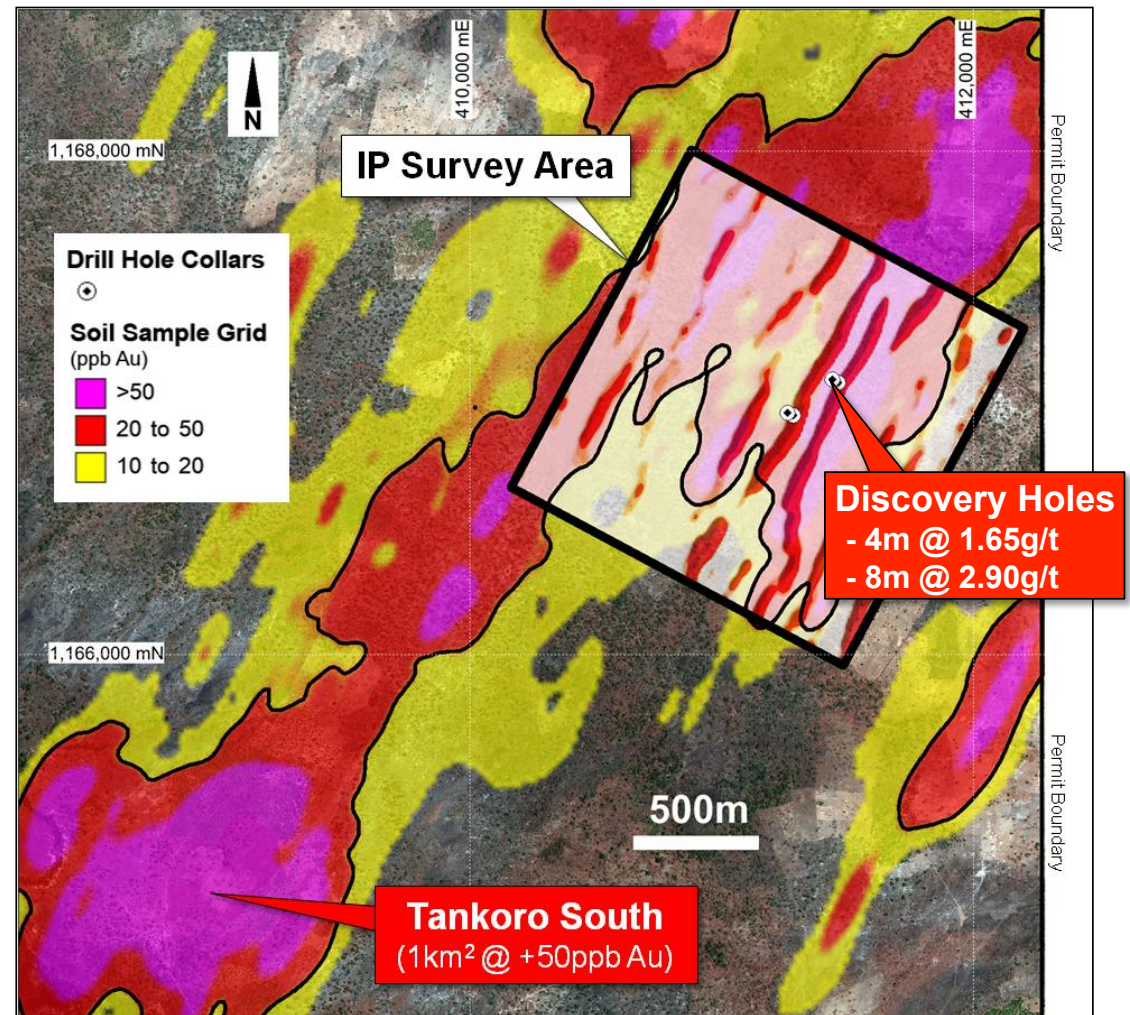
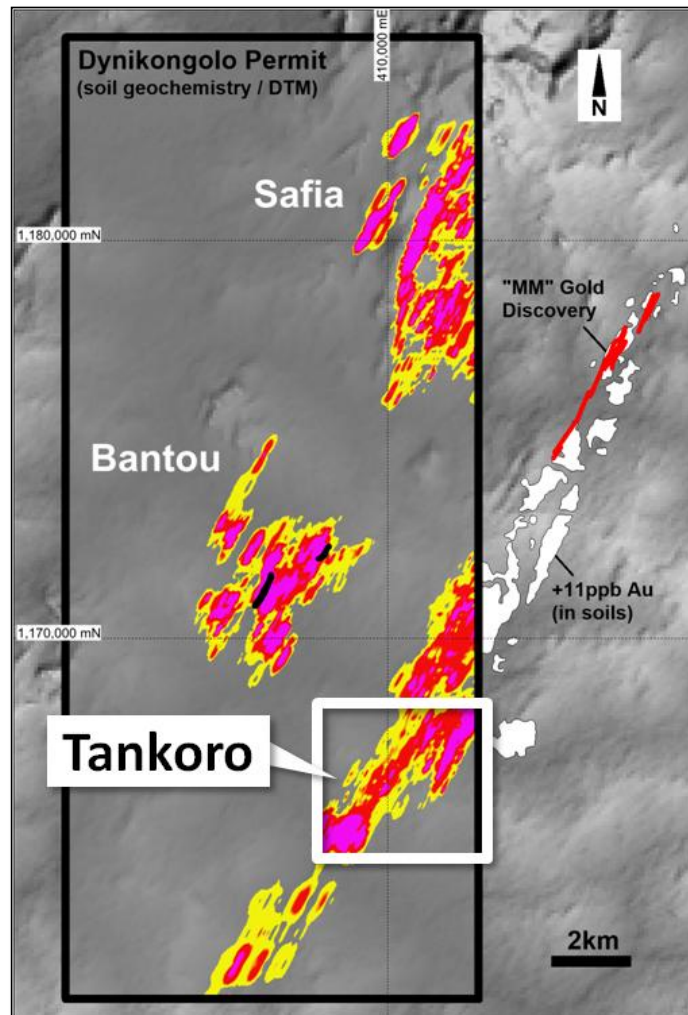
Bantou – High Order Soil Anomalies

(Multiple high-order gold-in-soil anomalies identified in recent soil sampling programs)



Tankoro – New Gold Mineralised Structures

(Reconnaissance drilling confirms gold mineralisation over coincident soil and geophysical anomalies)



Inset – Gradient array induced polarisation image showing chargeable resistivity anomalies.

Tankoro – Gold Mineralisation at Surface

(Drill hole DYRC062 collared in mineralisation – High grade grab / rock chip samples recorded at surface)

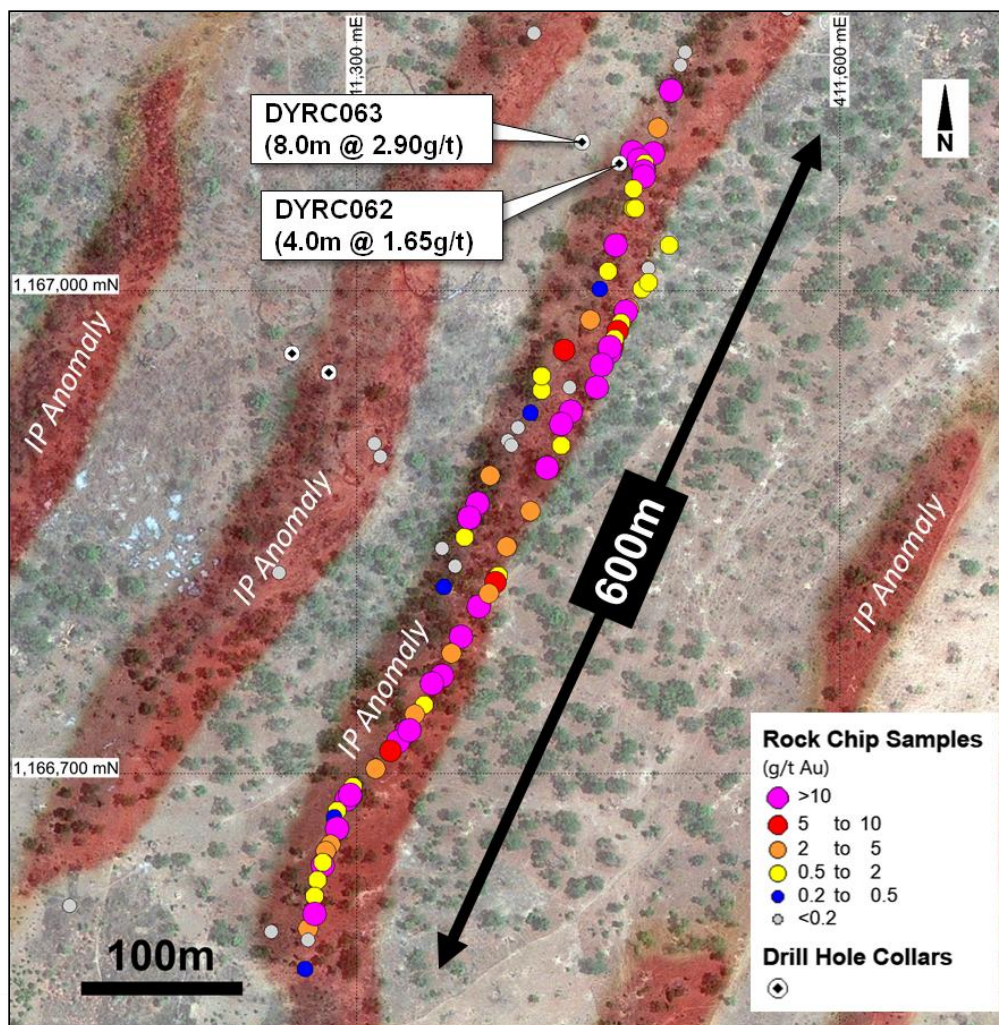
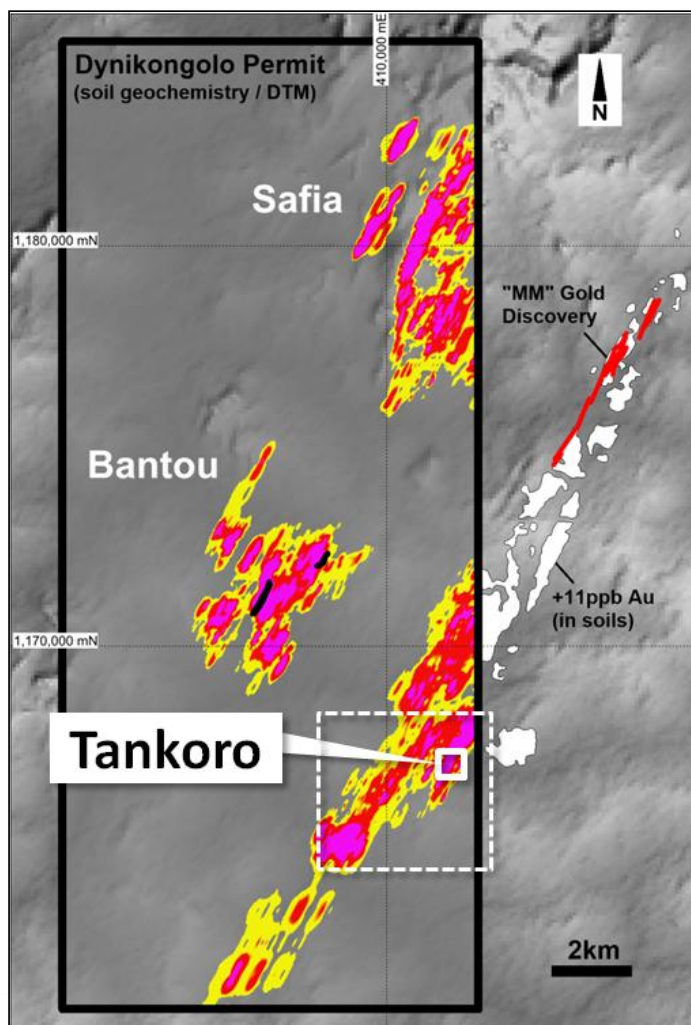


ORBIS
GOLD

IP Anomaly – Gradient array chargeable resistivity anomalies.

Tankoro – High Grade Rock Chips Over 600m

(Multiple gold mineralised structures identified in shallow artisanal pits / Mineralisation open along strike)

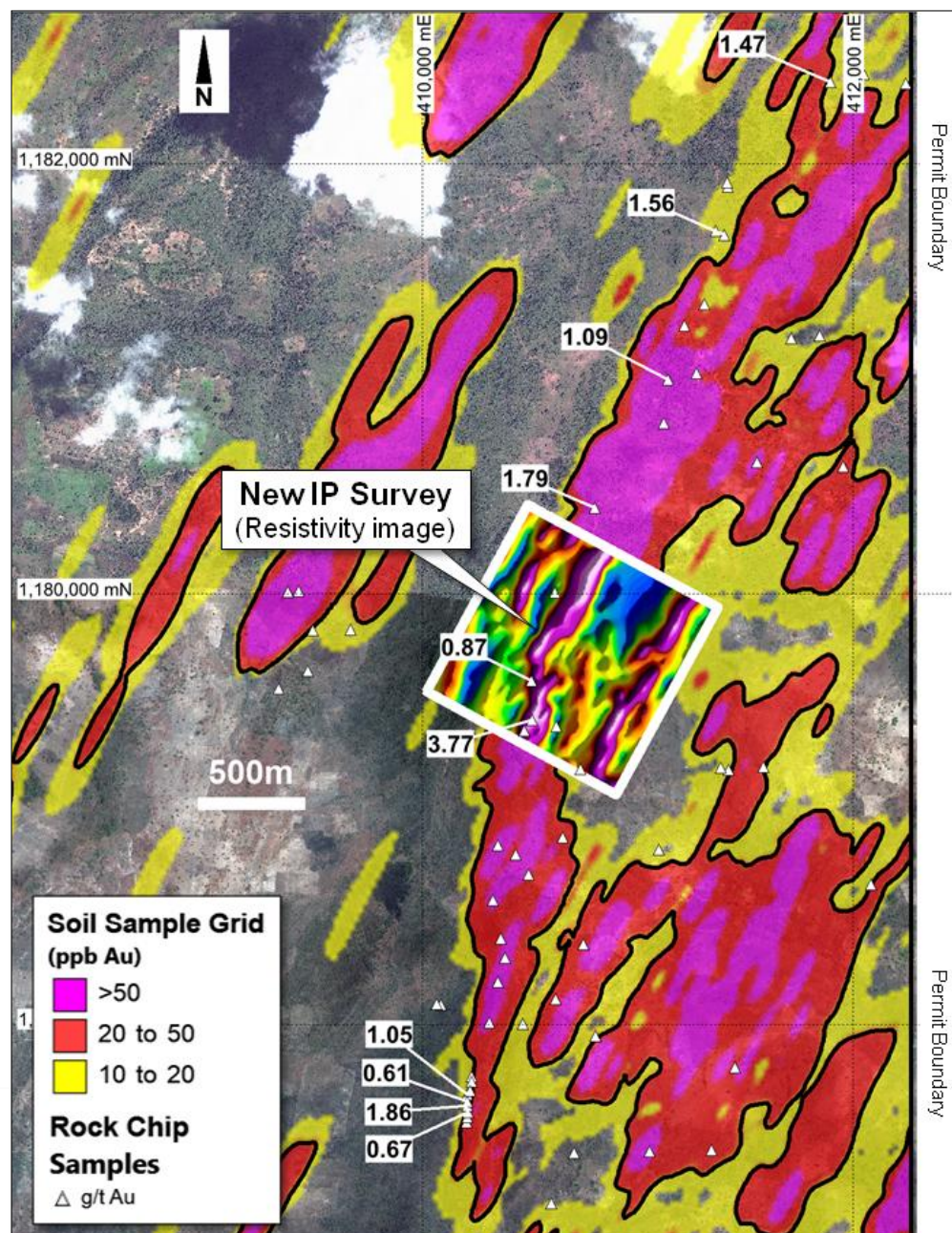
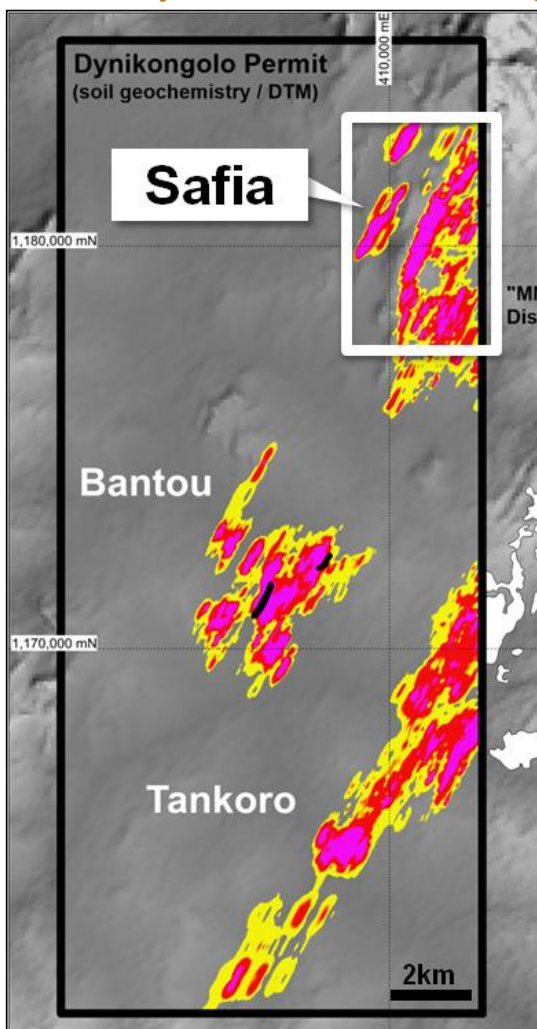


ORBIS
GOLD

IP Anomaly – Gradient array chargeable resistivity anomalies.

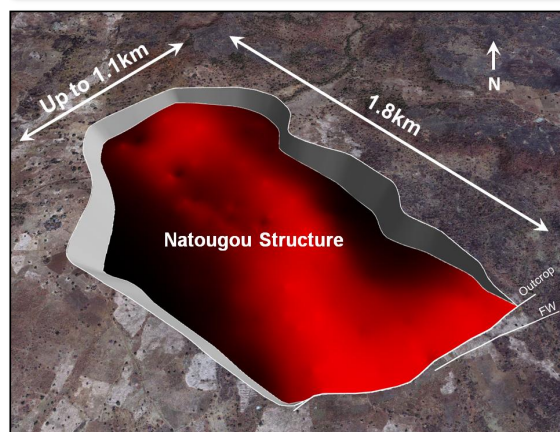
Safia Prospect

(Soil anomaly over 6km strike length)

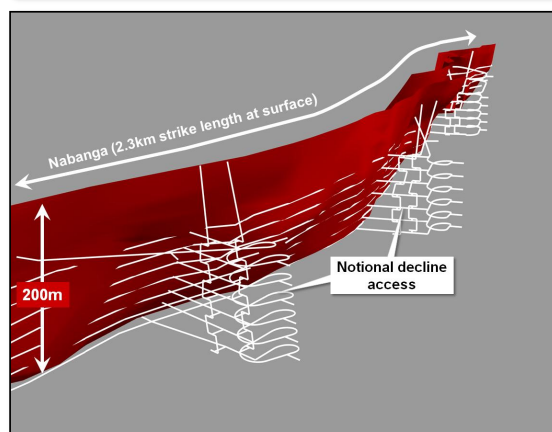


Investment Summary (ASX:OBS)

Natougou



Nabanga



Exploration



- Highly prospective land holding in world-class gold province
- 2.5 Mozs @ 4.1g/t Au Mineral Resource inventory⁽¹⁾
- Scoping studies in progress at Natougou / Nabanga⁽²⁾
- Significant pipeline of gold targets - **Bantou, Tankoro, Safia ...**



(1) Combined Indicated and Inferred Mineral Resources for Natougou and Nabanga deposits – reported above an 0.5g/t Au lower cut-off grade (refer slide 36 for breakdown by Mineral Resource category).

(2) Nabanga scoping study being completed for internal evaluation purposes.



ORBIS
GOLD

Orbis Gold Limited
Level 32, 10 Eagle Street
Brisbane, QLD 4000
T +61 (0)7 3198 3040

Securities Exchange
ASX:**OBS**

Peter Spiers
Managing Director

Investor Relations
T +61 (0)7 3198-3040
info@orbisgold.com
www.orbisgold.com

