



Eastmain Resources Inc.

Corporate Presentation

September 2013

Adding Value Through Discovery



75° 48' 52" W 52° 13' 01" N

72° 05' 19" W 52° 18' 01" N

75° 57' 20" W 52° 37' 06" N

*Certain information set forth in this Presentation may contain forward-looking statements that involve substantial known and unknown risks and uncertainties. These forward-looking statements are subject to numerous risks and uncertainties, certain of which are beyond the control of Eastmain, including, but not limited to the impact of general economic conditions, industry conditions, dependence upon regulatory approvals and the availability of financing. Readers are cautioned that the assumptions used in the preparation of such information, although considered reasonable at the time of preparation, may prove to be imprecise and, as such, undue reliance should not be placed on forward-looking statements. Some of my commentary may contain forward-looking information, therefore, you are cautioned that the Corporation's actual results could differ materially from my conclusions, forecasts or projections. I refer you to the section entitled "Risk Factors" in our **Annual Information Form** available on www.SEDAR.com which sets out certain material factors that could cause actual results to differ.*

Focused on Gold Exploration in Mine-Friendly James Bay, Québec

Company Overview

- Two High-Grade Gold deposits:
 - Eau Claire (1.8M ounces)
 - Eastmain Mine (former producer)
- Reservoir Project – C52 Gold Zone
- Eleonore South – Joint with Goldcorp
- Favourable Mining Jurisdiction
- Mine-ready infrastructure (roads, power)
- Quebec's Plan Nord – new permanent road access for Eastmain Mine
- Financial incentives (50% rebate)
- Goldcorp largest shareholder (9.9%)

Summary Market Statistics

Trading Symbol	TSX:ER
Share Price Range ⁽¹⁾	C\$0.19 – 1.07
Shares Outstanding (Basic)	106.6 M
Options (average price \$1.00)	5.31 M
Warrants	nil
Shares Outstanding (Fully Diluted)	111.9 M
Market Capitalization	C\$40 M
Treasury ⁽²⁾	C\$7.9 M

(1) As at close on July 31, 2013

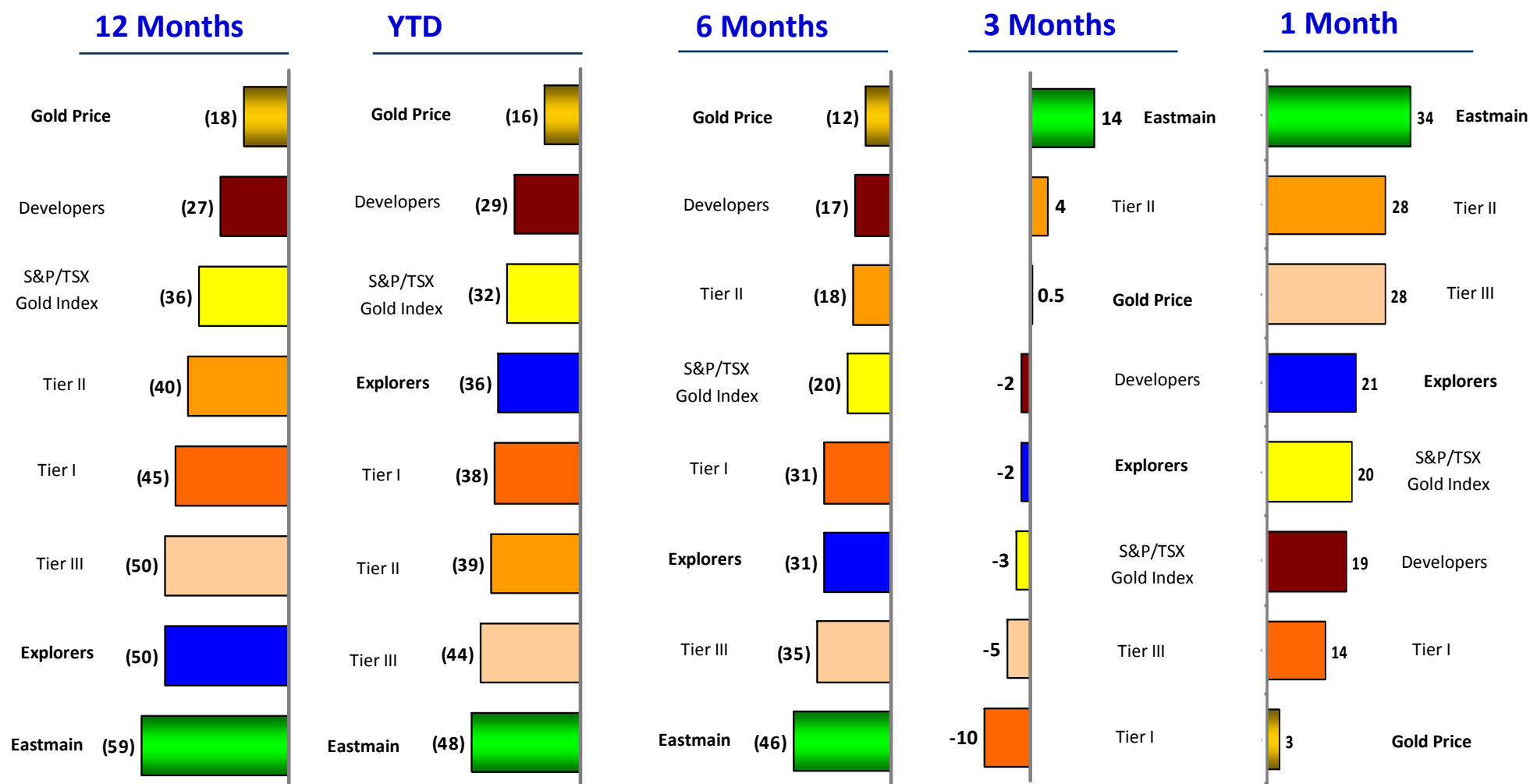
(2) As of July 31, 2013, Eastmain had cash and cash equivalents of \$4.9M, plus marketable securities of \$3.0M; prepaid accounts \$0.4M; \$2M Quebec rebate receivable (not included).

Share Performance Comparables



- Performance of Gold Producers to Explorers have reversed from negative to positive
- Eastmain's price performance has moved positive over the last quarter

Gold Equities and spot price comparison



Source: Bloomberg as at market close on Sept 9, 2013
 Tier I, Tier II, Tier III, Developers and Explorer listing in Appendix I

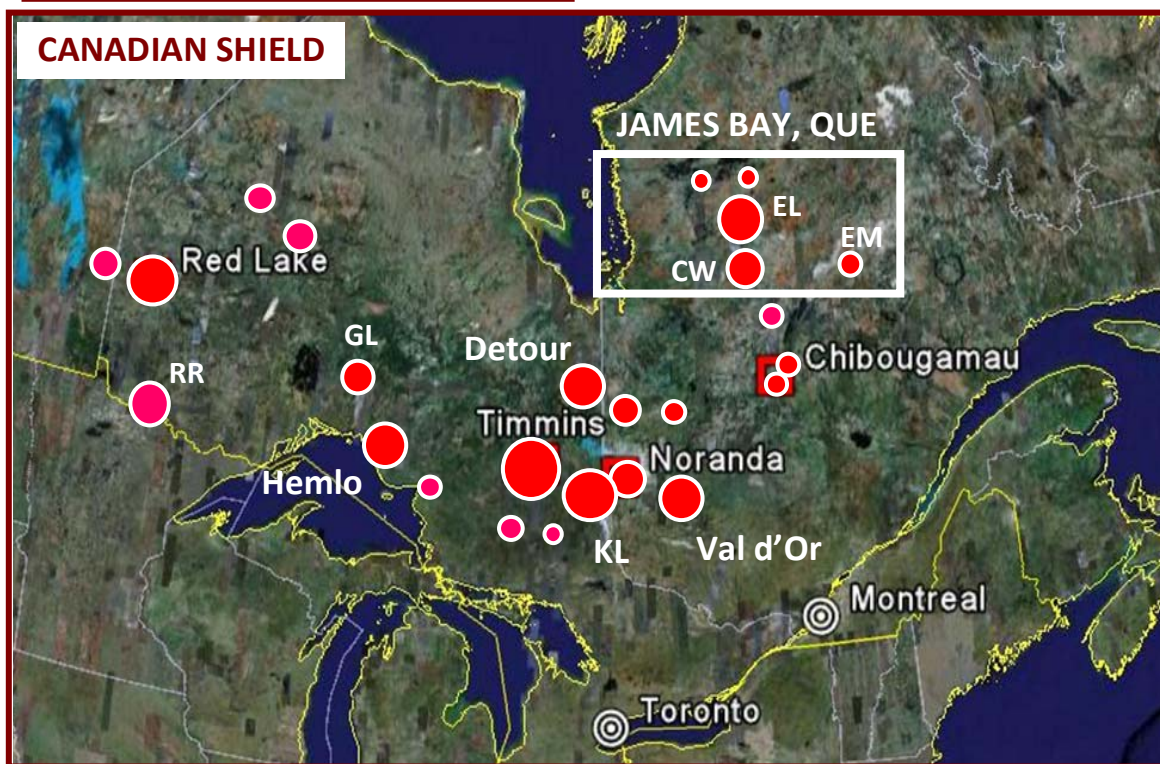
Gold Mining Camps in the Canadian Shield

James Bay, Québec – An emerging Mining Camp

Gold Mining Camps in the Canadian Shield



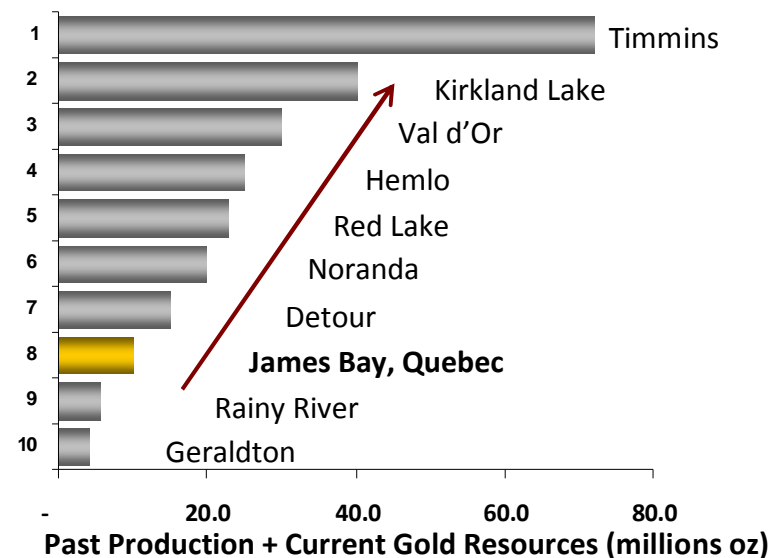
GOLD DEPOSITS



Overview

- Over **200 million ounces** gold produced from Canadian Shield **Greenstone Belts**
- Several “Mining Camps” occur within these belts; each defined by one or more **Giant deposits** (>10 million oz)
- James Bay, Québec, mining district ranks amongst **the top 10 gold** camps in the Canadian Shield
- James Bay, Québec is underexplored and **climbing in significance**

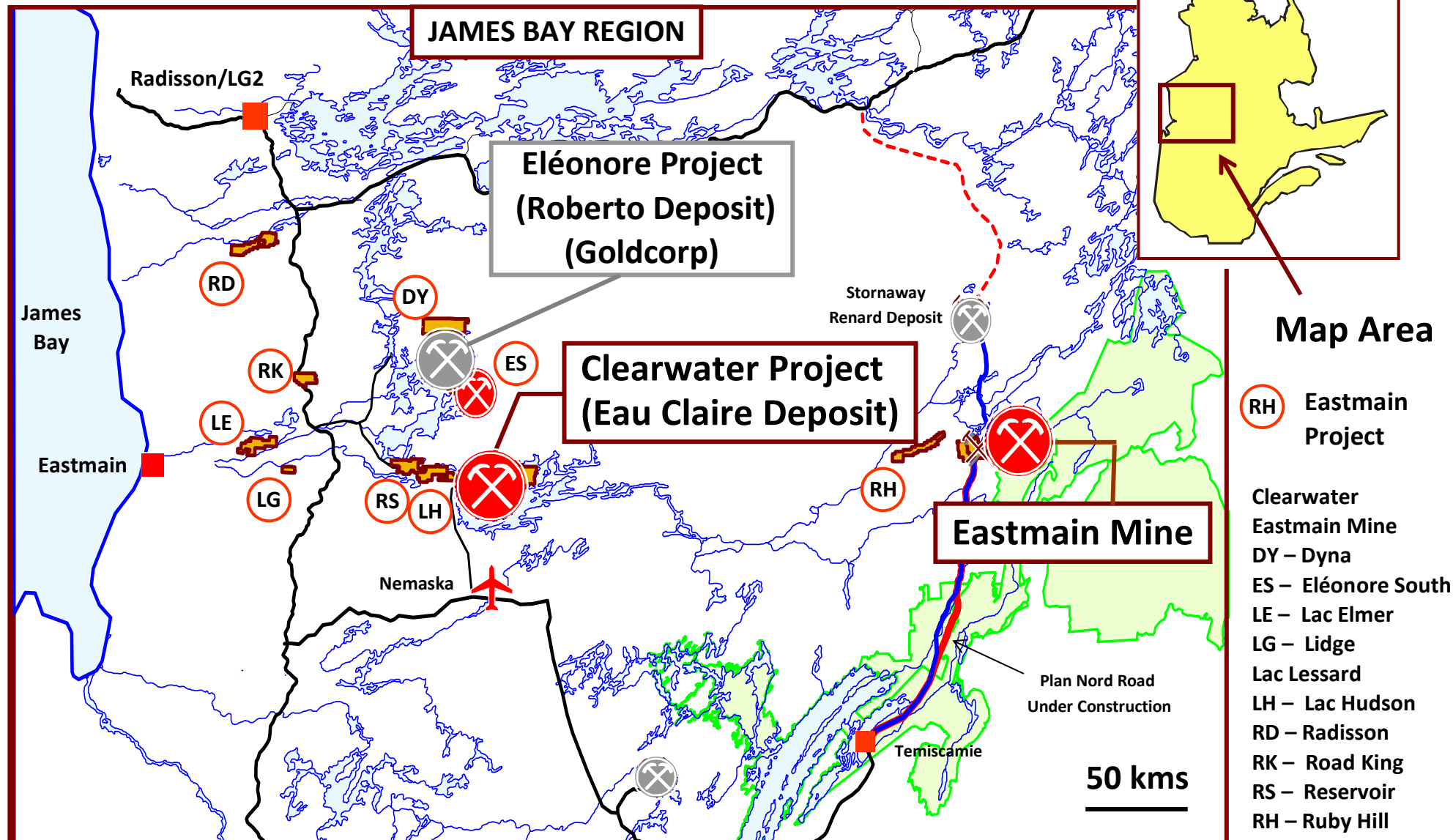
Top 10 Canadian Gold Camps



James Bay, Québec – Project Location Map

Excellent infrastructure – Roads, power, airports, fuel ...

James Bay – New Mining District



Eau Claire is Higher Grade than 75% of all Gold Deposits Worldwide

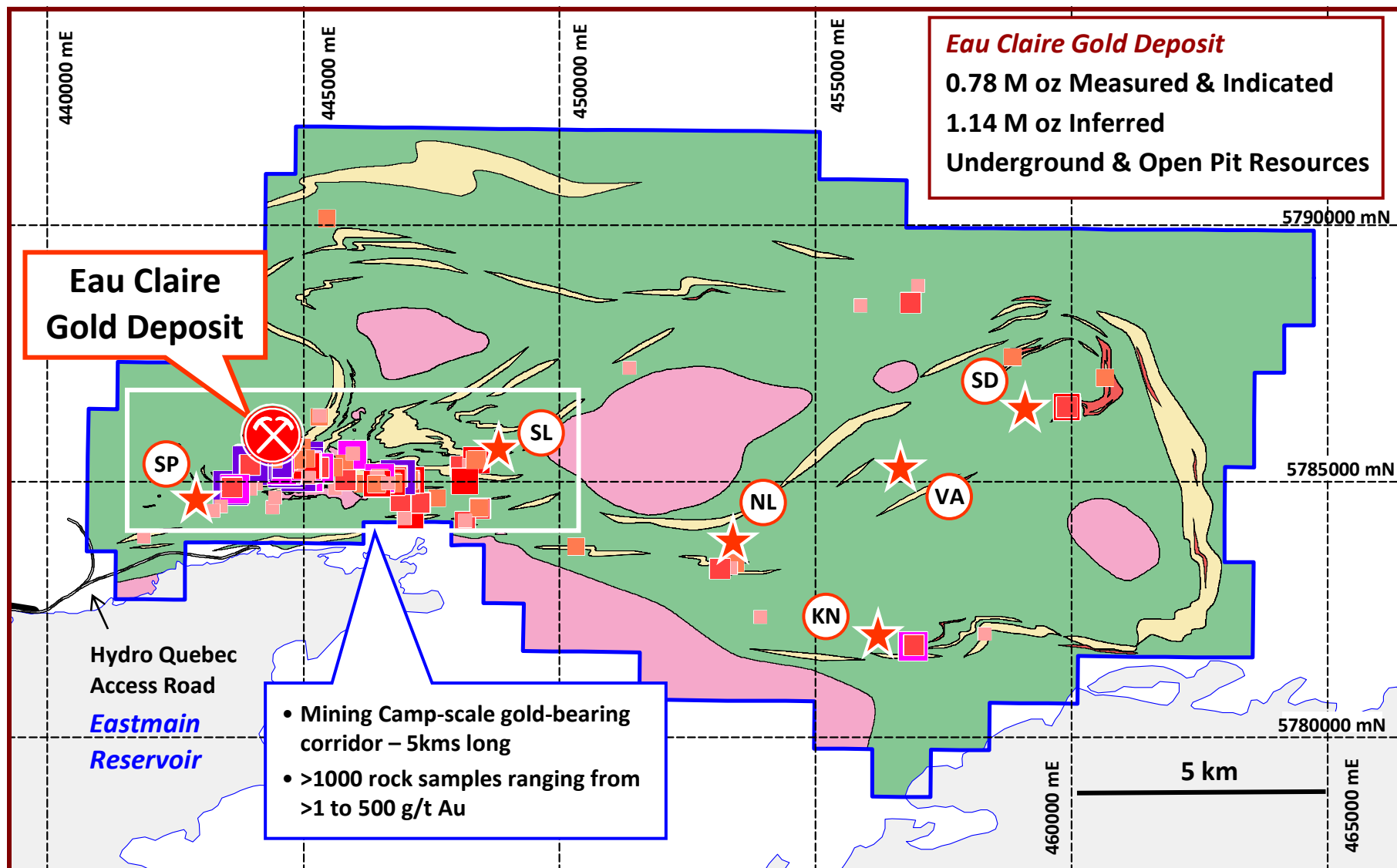
Overview

- High-Grade Open Pit & Underground Gold Deposit
- Volcanic-hosted Quartz-Tourmaline vein system
- Metallurgy – Gold with byproducts of Te, Bi and Ag
Tellurobismuthite (Bi_2Te_3) and Petzite (Ag_3AuTe_2)
Excellent metallurgical properties
- 25,000 m drilling + surface stripping in progress
- Block Model resource estimate in progress
- Infrastructure – permanent road access and power
- Objectives – Long-Life, Low-Cost, Highly Profitable Gold Deposit







Clearwater Project Overview

Clearwater: Eastmain's Flagship Project (Contains Eau Claire Gold Deposit)

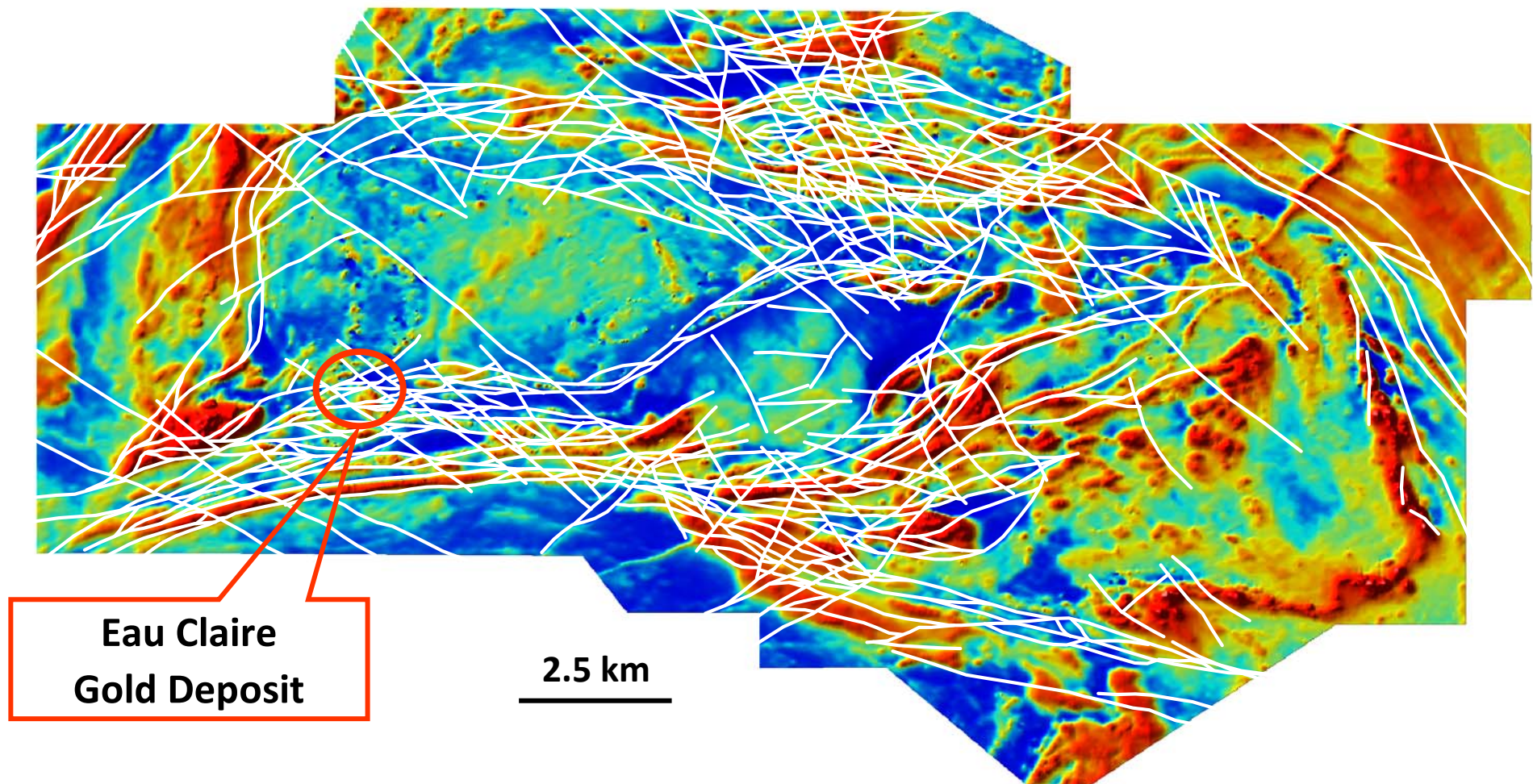


Rock Assays

	30 to 500 g/t Au		10 to 30 g/t Au		5 to 10 g/t Au		2.5 to 5 g/t Au		1. to 2.5 g/t Au
---	------------------	---	-----------------	--	----------------	---	-----------------	---	------------------

SL Regional Target Areas: SD – Serendipity; SP – Spider; SL – Snake Lake; VA – Vanna; KN – Knight; NL – Natel

Eau Claire coincides with a major regional structure & a fold hinge
Major gold deposits throughout the world are found near deep-seated structures



- Magnetic highs (red); Magnetic lows (blue)
- SRK structural interpretation of faults and shear zones (white lines)
- New Eleonore-style occurrence detected on the property

Eau Claire – a precious metal deposit rich in gold and tellurides

Quartz-Tourmaline Vein system with Au (Te-Bi-Ag)



Expanding 450 West Zone

Mineralization Overview

- Eau Claire consists of **two sets** of parallel gold-bearing **quartz-tourmaline veins** known as the **450 & 850 West Zones**
- Over **85 veins** have been **detected** over an area **1,800 m long by 300 m wide** to a **vertical depth of 900 m**
- **Gold mineralization** occurs as **0.5 to 4.0 metre-wide bonanza-style feeder veins** from **10 to >100 g/t Au** and **0.5 to 25 metre-wide altered rock** ranging from **0.5 to 3.5 g/t Au**
- **Quartz-tourmaline veins** contain **very fine grained gold plus telluride minerals** (tellurobismuthite)
- **Gold occurs within both the veins and adjacent altered wallrock**

Photo A – Quartz-Tourmaline piano-key breccia (P Vein from the 450 West Zone). Photo B – 2013 expansion of the 450 West Zone.

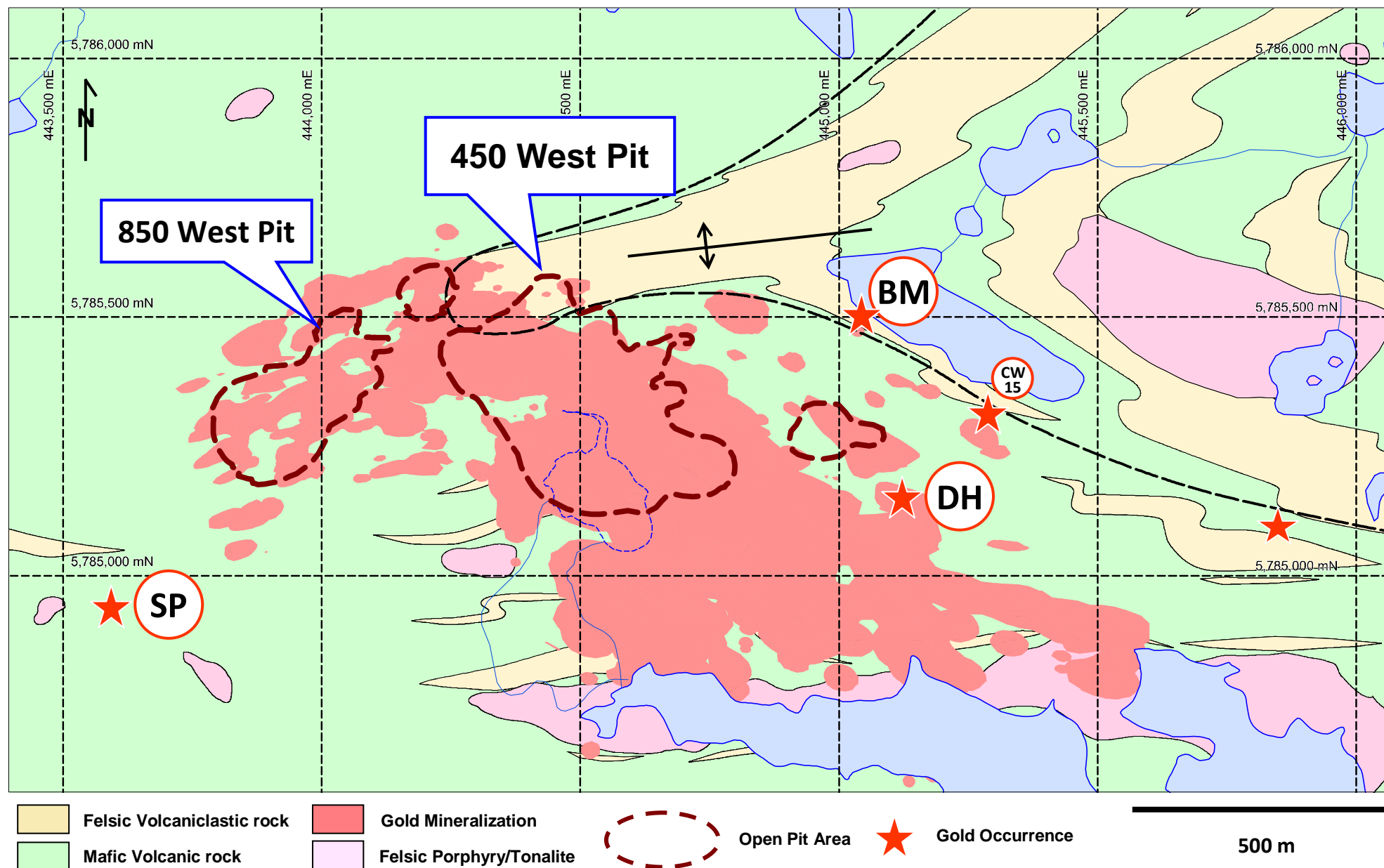
Gold-bearing Laminated & Brecciated ore veins in drill core



Note – Drill hole 303 intersected 10.5 m at 7.79 g/t Au (V12) including 24.9 g/t Au over 2.5m. Photos illustrate a central laminated quartz-tourmaline vein (A) bounded on both sides by a tourmaline-rich replacement zone (B) along the rock foliation. VG – visible gold has been observed in over 350 vein intersections.

Eau Claire Gold Deposit Geological Setting

Surface Projection of Gold Mineralization with Potential Open Pit Areas

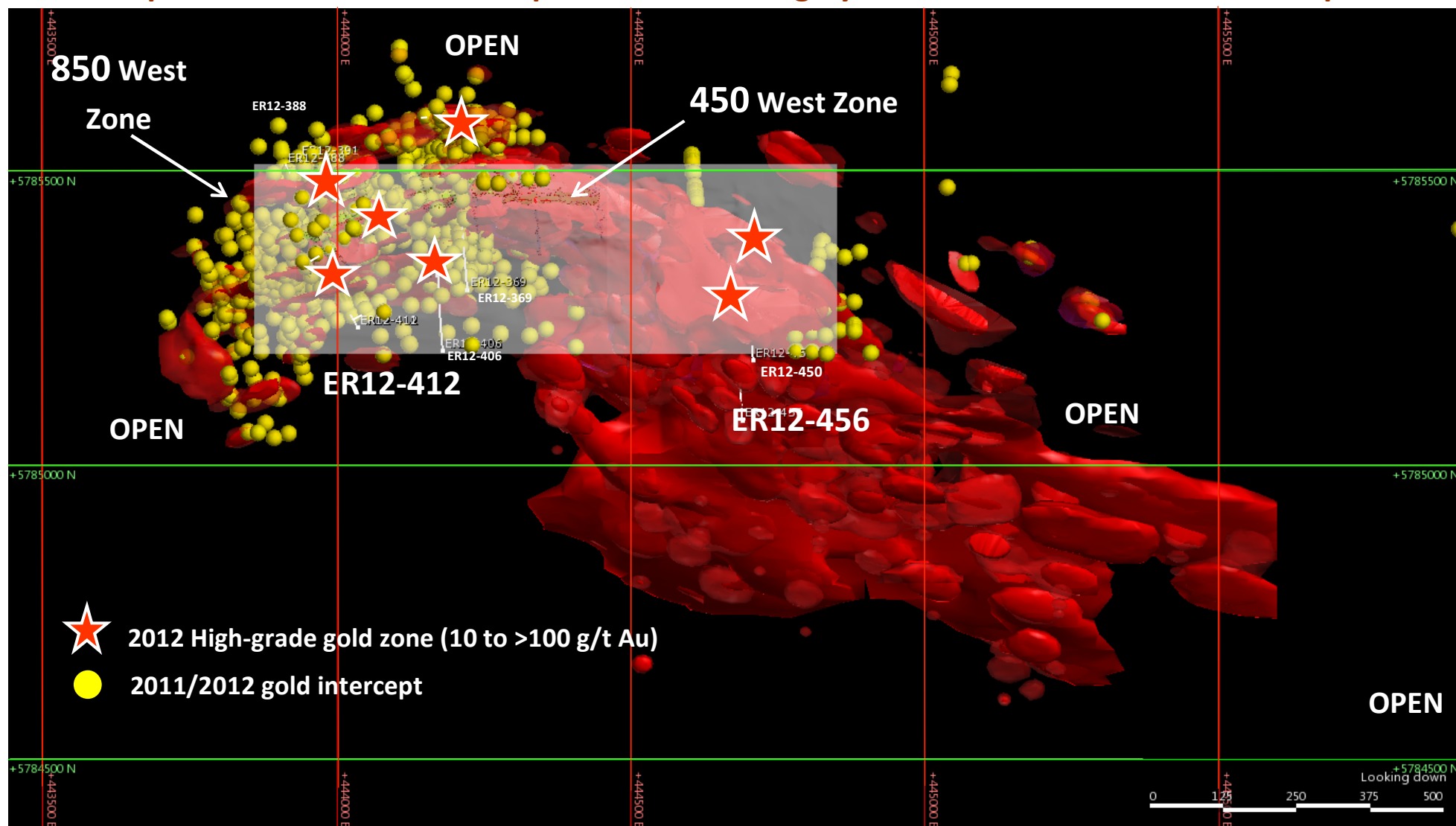


Note – SP – Spider Showing up to 66 g/t Au; BM – Boomerang up to 254 g/t Au; CW15- trench 15 up to 20 g/t Au; DH – Discovery drill hole – 500 g/t Au / 2m

Eau Claire Gold Deposit – 3D Model Looking Down

3D Plan View – 0.5 g/t Au grade shell of Eau Claire

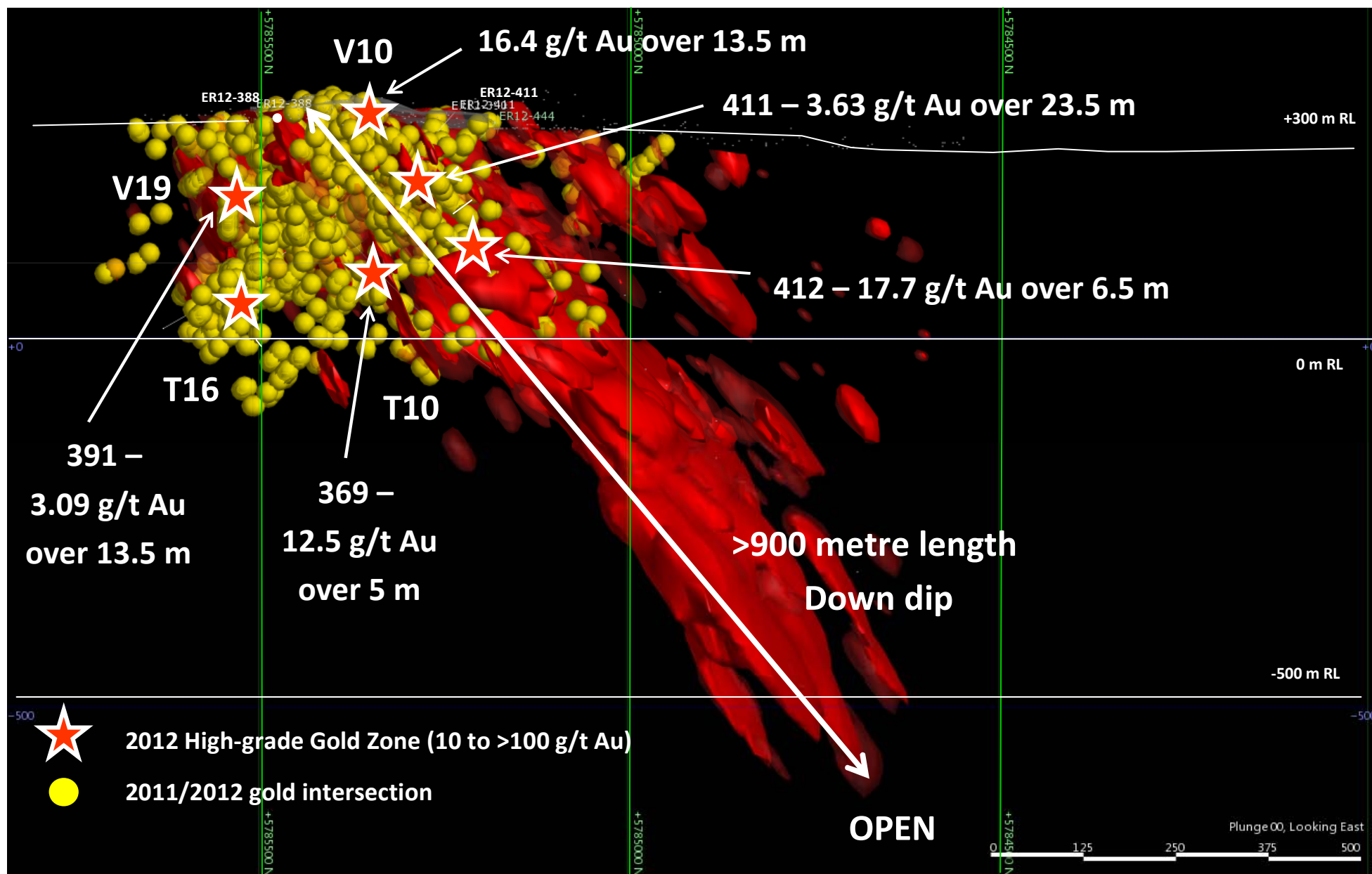
Surface plan of Eau Claire Gold Deposit – 1.8 km long by 300 m wide traced to 900 m depth



- 3D modeling of Eau Claire illustrates a large crescent-shaped body with a “hinge” forming between the 450 & 850 West Zones
- The gold-bearing vein system changes direction from the 450 West Zone (E-W, dipping S) to the 850 West Zone (NE-SW, subvertical dip).
- Bonanza-style feeder veins have been intersected within both 450 & 850 West Zones

Eau Claire Gold Deposit – Looking East

3D Cross Section View – 0.5 g/t Au grade shell of Eau Claire

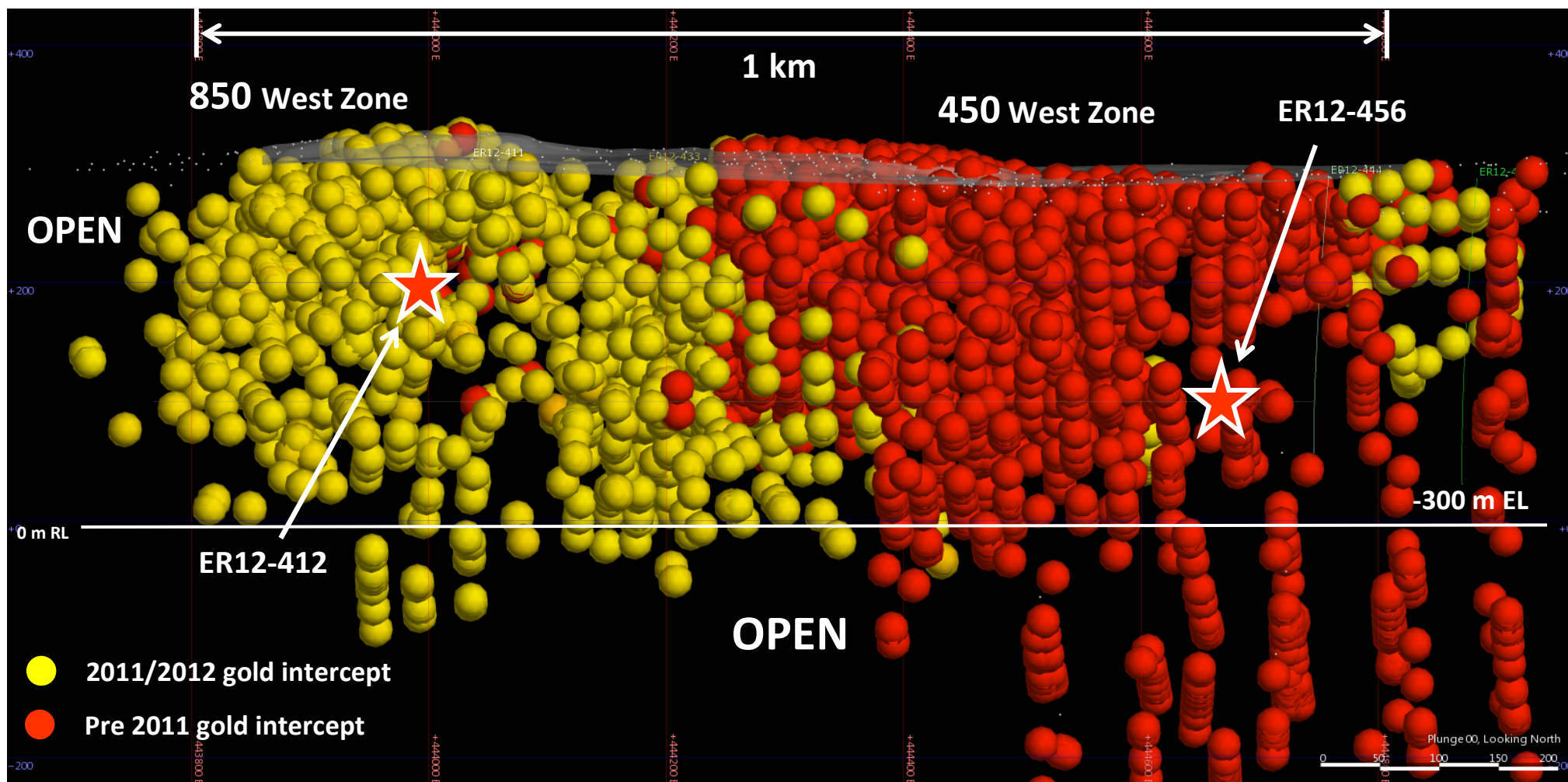


Note: 3D cross-sectional view looking east. Yellow spheres represent gold intersections from 2011 and 2012 drilling. Red stars represent recent drill intercepts with abundant VG.

Eau Claire Gold Deposit – Longsection Looking North

3D Leapfrog view of gold-bearing drill intersections >0.5 g/t Au

Longitudinal view of Eau Claire Gold Deposit – 450 & 850 Zones – Recent expansion



- Drilling over the past 24 months has DOUBLED the size of the gold deposit within 300 m of surface
- ER12-412 – 17.7 g/t Au/6.5 m; ER12-456 – 10.98 g/t Au /11.0 m (incl. 14.9 g/t Au / 7.5 m)

Eau Claire Gold Resource (Polygonal Model)



Measured & Indicated Open Pit Grade at 4.76 g/t Au

Resource Summary

	Tonnes (000's)	Au Grade (g/t)	In Situ Gold (oz, uncapped)
Eau Claire - Open Pit ⁽¹⁾			
Measured	2,728	5.12	449,000
Measured & Indicated	4,228	4.67	635,000
Inferred	2,478	2.68	213,000
Eau Claire – Underground ⁽²⁾			
Measured & Indicated	706	6.37	145,000
Inferred	4,035	7.20	935,000
Total Measured & Indicated	4,938	4.91	780,000
Total Inferred	6,513	5.48	1,148,000

(1) Resource estimate includes drilling up to the end of 2011 and was completed by P&E Mining Consultants.

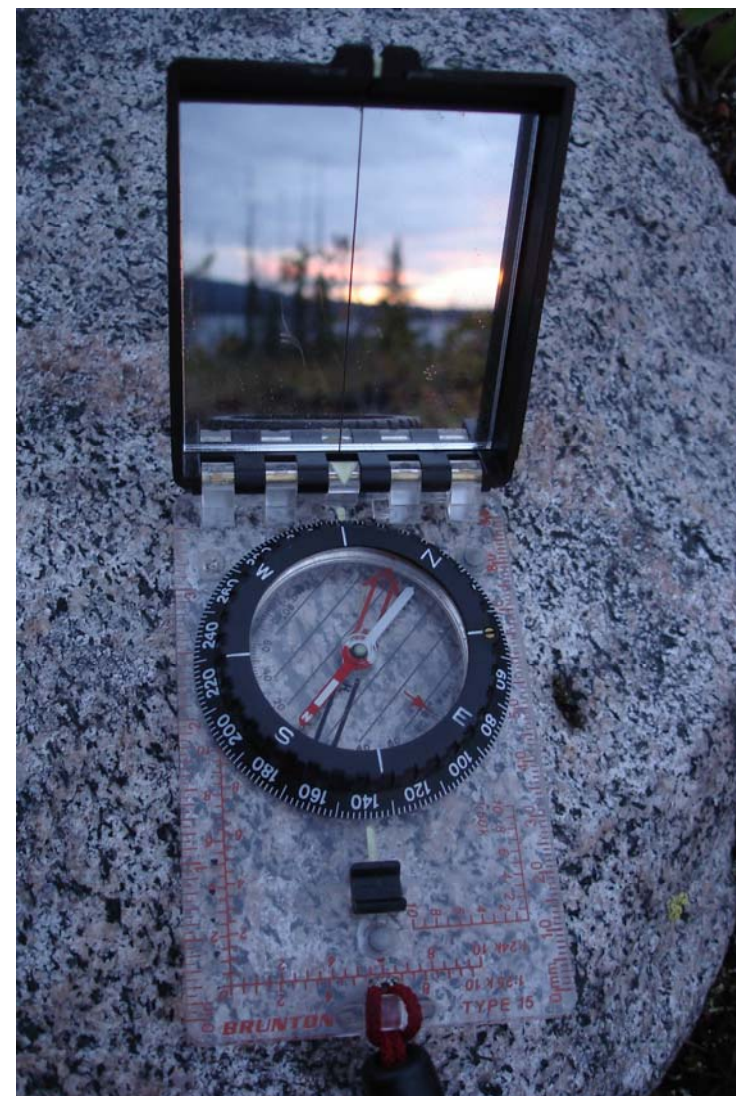
(2) Underground grade based on a 2.5 g/t cut-off grade; Open pit grade using a 0.5 g/t cut-off grade.

(3) Block Model Resource estimate in progress

One of the Highest Grade Open Pit Gold Projects in North America

\$5 Million exploration budget for 2013

- **Block Model Resource Update in progress**
- **Internal Scoping study completed**
- **25,000 m definition program focused on adding Open Pit table ounces (27 drill holes 10,000 m completed)**
- **New gold-bearing veins exposed within 450 West Zone over 1000 channel samples collected**
- **Prospective targets identified lateral to Eau Claire**
- **New “Eleonore-type” occurrence found using high-definition magnetic survey**
- **Next – Define Project Economics**



Analyst research coverage provided by three Brokerage firms

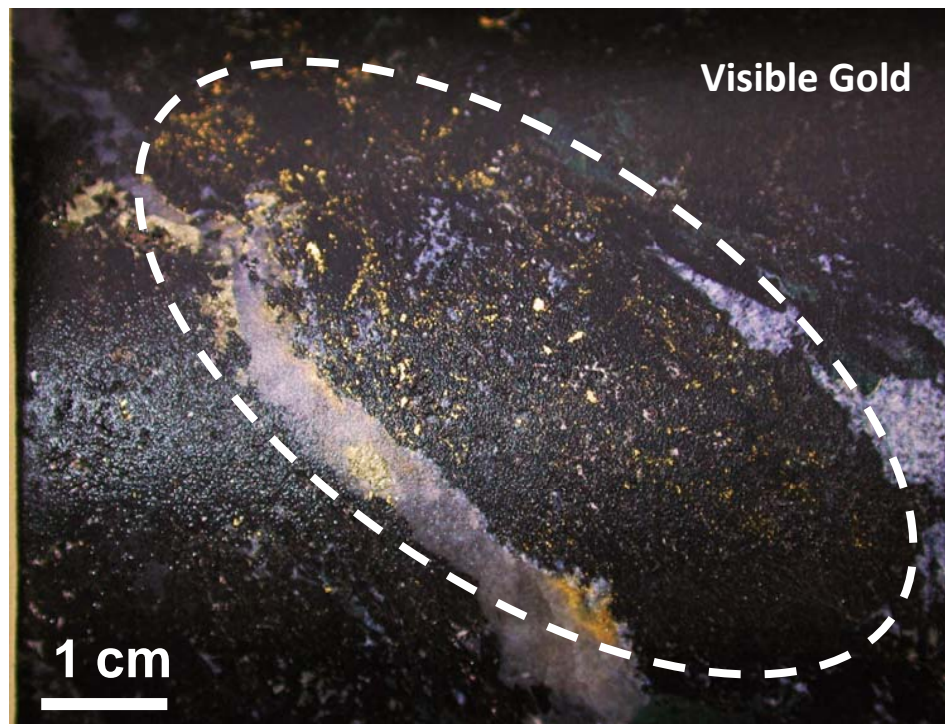
Speculative Buy Recommendations ranging from \$1.00 to \$2.00

Brokerage	Analyst	Target Price
Macquarie Equities Research	Michael Gray 604 639-6372	\$1.00
Stonecap Securities	Brian Szeto 416 342-9918	\$2.00
Laurentian Bank Securities	Eric Lemieux 819 472-8037	\$1.70
Investment Catalysts	25,000 m drilling Block Model Resource Update Internal Scoping Study High grade, safe jurisdiction, near development	

Clearwater One of the Highest-Grade Undeveloped Gold Projects in Canada

- Two High Grade Gold Deposits
- Clearwater 1 of 7 gold projects in NA
- Royalty Free
- Mine essential Infrastructure in place
- Top Mining Jurisdiction
- Provincial financial incentives (50%)
- Pending Resource Updates
- Goldcorp – largest shareholder, long term association
- Evidence for long-life, low cost, highly profitable gold deposit at Eau Claire

S-Vein (Hole 98 – 65 m depth)



*2,540 g/t Au (74.17 oz/ton);
incl. 24.6 g/t Au over 55.6m*



EASTMAIN

Adding Value Through Discovery

**36 Toronto Street
Suite 1000
Toronto, Ontario
Canada, M5C 2C5**

**Tel: 519-940-4870
Fax: 519-940-4871
www.eastmain.com
info@eastmain.com**

Management Team With a Track Record of Exploration Success

Management

Donald J. Robinson, Ph.D., P.Geo

President, CEO & Director since 1994

*30 years experience with base & precious metal deposits
Qualified Person (APGO & OGQ)*

Catherine I. Butella, B.Sc.

Exploration Manager

*30 years exploration experience in Canada & Australia
PDAC "Prospector of the Year" Nominee*

James L. Bezeau, BBA, CMA

Chief Financial Officer

30 years of financial, accounting & managerial experience

David Frappier-Rivard

District Geologist, M.Sc., P.Geo

12 years exploration experience in Canada & Africa

Jay Goldman, BA, MBA, LLB

Corporate Secretary

Cassels Brock & Blackwell - Partner

Chad Steward

Manager Corporate Communications

Directors

John A. Hansuld, Ph.D.

Director since 1985

*>45 years Mining Executive in global exploration
PDAC – Mining Man & Developer of the Year; CMHF*

David K. Joyce,

Director

30+ years Mining Industry experience

Ian J. Bryans, BA

Director, Compensation Committee Chair

30 years experience in strategic marketing

Murray Short, MBA, CPA, CA

Director, Audit Committee Chair

9 years experience in public accounting

Advisory Board

Richard W. Hutchinson, Ph.D. , Professor Emeritus

Leading authority in Ore Deposits Geology, CMHF

Neil Hillhouse, Ph.D.,

50 years experience; credited with numerous discoveries

Dr. Ted Moses, former Cree Grand Chief

Officer of the Order of Quebec; Clearwater Project - Tallyman