

Corporate Presentation September 2013



Disclaimer

The information provided in this presentation is not intended to be a comprehensive review of all matters and developments concerning the Company. It should be read in conjunction with all other disclosure documents of the Company. The information contained herein is not a substitute for detailed investigation or analysis. No securities commission or regulatory authority has reviewed the accuracy or adequacy of the information presented.

FORWARD-LOOKING STATEMENTS

This presentation contains “forward-looking statements” within the meaning of Canadian securities legislation and the United States Securities Litigation Reform Act of 1995. Such forward-looking statements concern the Company’s anticipated results and developments in the Company’s operations in future periods, planned exploration and development of its properties, plans related to its business and other matters that may occur in the future. These statements relate to analyses and other information that are based on expectations of future performance, including silver and gold production and planned work programs. Statements concerning reserves and mineral resource estimates may also constitute forward-looking statements to the extent that they involve estimates of the mineralization that will be encountered if the property is developed and, in the case of mineral reserves, such statements reflect the conclusion based on certain assumptions that the mineral deposit can be economically exploited.

Forward-looking statements are subject to a variety of known and unknown risks, uncertainties and other factors which could cause actual events or results to differ from those expressed or implied by the forward-looking statements, including, without limitation: risks related to precious and base metal price fluctuations; risks related to fluctuations in the currency markets (particularly the Mexican peso, Canadian dollar and United States dollar); risks related to the inherently dangerous activity of mining, including conditions or events beyond our control, and operating or technical difficulties in mineral exploration, development and mining activities; uncertainty in the Company’s ability to raise financing and fund the exploration and development of its mineral properties; uncertainty as to actual capital costs, operating costs, production and economic returns, and uncertainty that development activities will result in profitable mining operations; risks related to reserves and mineral resource figures being estimates based on interpretations and assumptions which may result in less mineral production under actual conditions than is currently estimated and to diminishing quantities or grades of mineral reserves as properties are mined; risks related to governmental regulations and obtaining necessary licenses and permits; risks related to the business being subject to environmental laws and regulations which may increase costs of doing business and restrict our operations; risks related to mineral properties being subject to prior unregistered agreements, transfers, or claims and other defects in title; risks relating to inadequate insurance or inability to obtain insurance; risks related to potential litigation; risks related to the global economy; risks related to the Company’s status as a foreign private issuer in the United States; risks related to all of the Company’s properties being located in Mexico and El Salvador, including political, economic, social and regulatory instability; and risks related to officers and directors becoming associated with other natural resource companies which may give rise to conflicts of interests.

Should one or more of these risks and uncertainties materialize, or should underlying assumptions prove incorrect, actual results may vary materially from those described in the forward-looking statements. The Company’s forward-looking statements are based on beliefs, expectations and opinions of management on the date the statements are made. For the reasons set forth above, investors should not place undue reliance on forward-looking statements. The information contained herein is not a substitute for detailed investigation or analysis. No securities commission or regulatory authority has reviewed the accuracy or adequacy of the information presented.

All monetary figures are expressed in United States dollars unless otherwise specified.

Qualified Person

Under *National Instrument (NI 43-101) Standards of Disclosure for Mineral Projects*, the Qualified Person for this presentation is N. Eric Fier, CPG, P.Eng., President & Chief Operating Officer for SilverCrest Mines Inc., who has reviewed and approved its contents.

Experienced & Successful Management Team

FOUNDERS

J. Scott Drever, BSc., Chairman & CEO (45 years experience)

Strategic Planning, Mergers & Acquisitions. Management and operational experience with several production companies, including Placer Dome and Blackdome Mining.

N. Eric Fier, CPG, P.Eng., President & COO (25 years experience)

Operations, Project Evaluation & Management. Previously with Newmont Mining, Eldorado Gold, Pegasus Gold Corp. Involvement in construction and operations of 4 successful mines, including Santa Elena. Several major international discoveries.

Barney Magnusson, CA, CFO (35 years experience)

Served as an Officer and Director of 6 mining (Dayton Mines, High River Gold Mines) companies that developed, constructed or operated 8 precious metals mines in North and South America.

Brent McFarlane, BSc., VP Operations (25 years experience)

Managed all phases of open pit and underground mining projects and instrumental in leading Mexican and Int'l projects through feasibility, construction, and production while working for Minefinders, Kappes Cassiday, TVI Pacific, Marston, and Pegasus Gold.

Marcio Fonseca, P.Geo., VP Corporate Development (20 years experience)

Served as Division Director at Macquarie Metals & Energy Capital with focus on equity and debt financing for the mining sector over the last 9 years. Prior to that, he held corporate positions in business development, project development, operations and exploration with Vale and Phelps Dodge in Latin America.

Graham C. Thody, CA, Director (30 years experience)

Corp. finance and public company management. Director and President of UEX Corp., Chairman of the Board of Geologix.

George W. Sanders, Director (30 years experience)

Experience in mining and exploration finance. Previously with Canaccord Capital Corp., Richmond Mines Inc., Consolidated Cinola Mines Ltd., and Shore Gold Inc.

Ross Glanville, P.Eng., CGA, Director (40 years experience)

Experience in mining, exploration finance, valuations and fairness opinions. Director of Archon Minerals Limited, Clifton Star Resources Inc. and Starfield Resources Inc.

Overview of SilverCrest

BUILDING THE NEXT MID-TIER SILVER-GOLD PRODUCER IN MEXICO

H1 2013 Production

- 1,222,351 million Ag Eq oz
- 347.5K oz Ag | 14.7K oz Au

Reserves Santa Elena (April 30, 2013)

- 19.7 million Ag oz
- 327,430 Au oz
- (open pit, underground, leach pads)

H1 2013 Cash Cost

- \$ 7.74 per Ag Eq oz (\$425 Au Eq)
- \$14.56 per Ag Eq oz (ALL IN)

Resources* (April 30, 2013)

- Santa Elena (Underground):
- Indicated: 7.9 mill Ag oz, 116,000 Au oz
- La Joya:
- Inferred: 198.6 million Ag Eq oz

H1 2013 Revenues, Earnings, Margin

- \$ 28.3 million (Revenues)
- \$ 8.8 million (Net Earnings)
- 31%

Asset Stages

- 1 Operating (Santa Elena)
- 1 Development – PEA (La Joya)

Estimated Production

- 2013: 2.49 million Ag Eq oz
- 2014: 3.5 million Ag Eq oz

Geographic Location

- Mexico: Sonora & Durango

NOTE: Ag Eq based on 55:1 ratio

*Additional details on Resources on slide 10 & 11

Capital Structure & Trading History

SVL SHARE STRUCTURE

Issued & Outstanding:	108,843,205
Options:	6,325,000
Fully Diluted Shares:	115,168,205
Average Option Price:	CAD \$1.41

	TSX.V	NYSE MKT
90 - Day Avg. Daily Volume:	372,113	275,193
52 Week High / Low:	\$2.96 / \$1.19	\$3.05/\$1.13
Share Price (Sept. 13, 2013):		CAD \$1.93
Market Cap:		CAD \$210 M
Working Capital (June 30, 2013):		\$41.6 M
Line of Credit (Scotiabank; LIBOR +3%)		\$40 M

MANAGEMENT & KEY SHAREHOLDERS

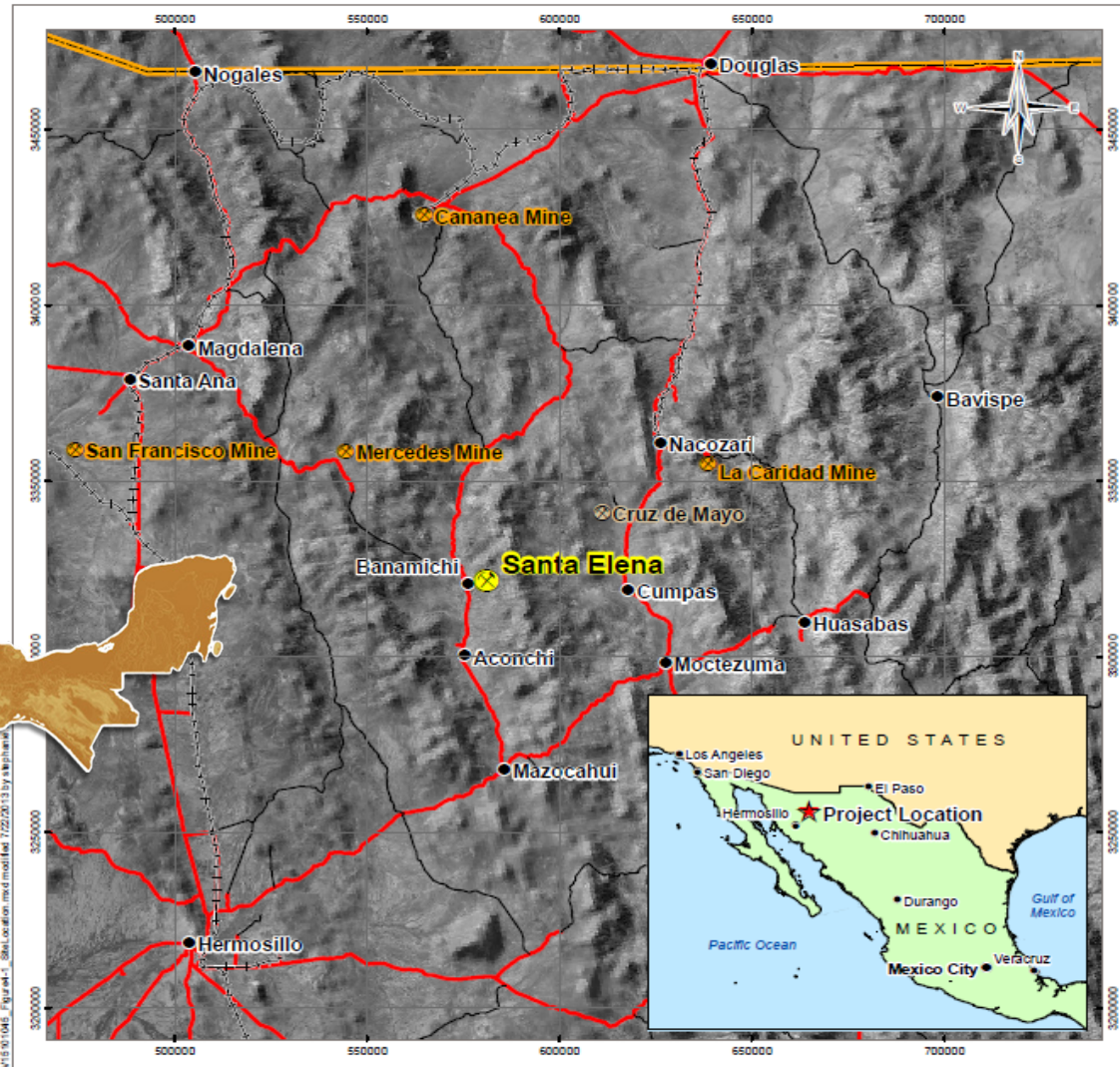
Fully Diluted (as of September 6, 2013)

J. Scott Drever, Chairman & CEO:	2,391,226
N. Eric Fier, President & COO:	2,157,027
Barney Magnusson, CFO:	2,570,727
Sprott Asset Management:	7.1%
Wellington Management:	6.7%
Libra Advisors:	5.7%
AGF Investments:	3.7%
J.P. Morgan Chase & Co:	1.4%
Independent Directors:	1,720,300



Mexico Properties

Santa Elena Property



Santa Elena Mine



Santa Elena Mine Expansion – Pre-Feasibility Study, April 2013

Item	Base Case	Spot Price
Gold Price (US\$/oz.)	\$ 1,450	\$ 1,250
Silver price (US\$/oz.)	\$ 28	\$ 19.5
IRR (%)	88%	49%
DCF NPV @ 5% in millions	\$223.7	\$108.7
Payback (production years)	1.1	1.7

Base Case Economic Analysis Results ¹ - Life of Mine	
Production	
Gold Ounces Sold - post refiner	262,739
Silver Ounces Sold - post refiner	12,118,926
Revenue	
	US\$(000)
Gross Sales	\$684,931
Operating Expenses	
Total Operating Costs ²	\$282,223
Freight & Refining	\$5,579
Capital Expenses	
Total Capital Costs ³	\$87,813
Pre-Tax Cash Flow	
Total Cash Flow ⁴	\$302,481

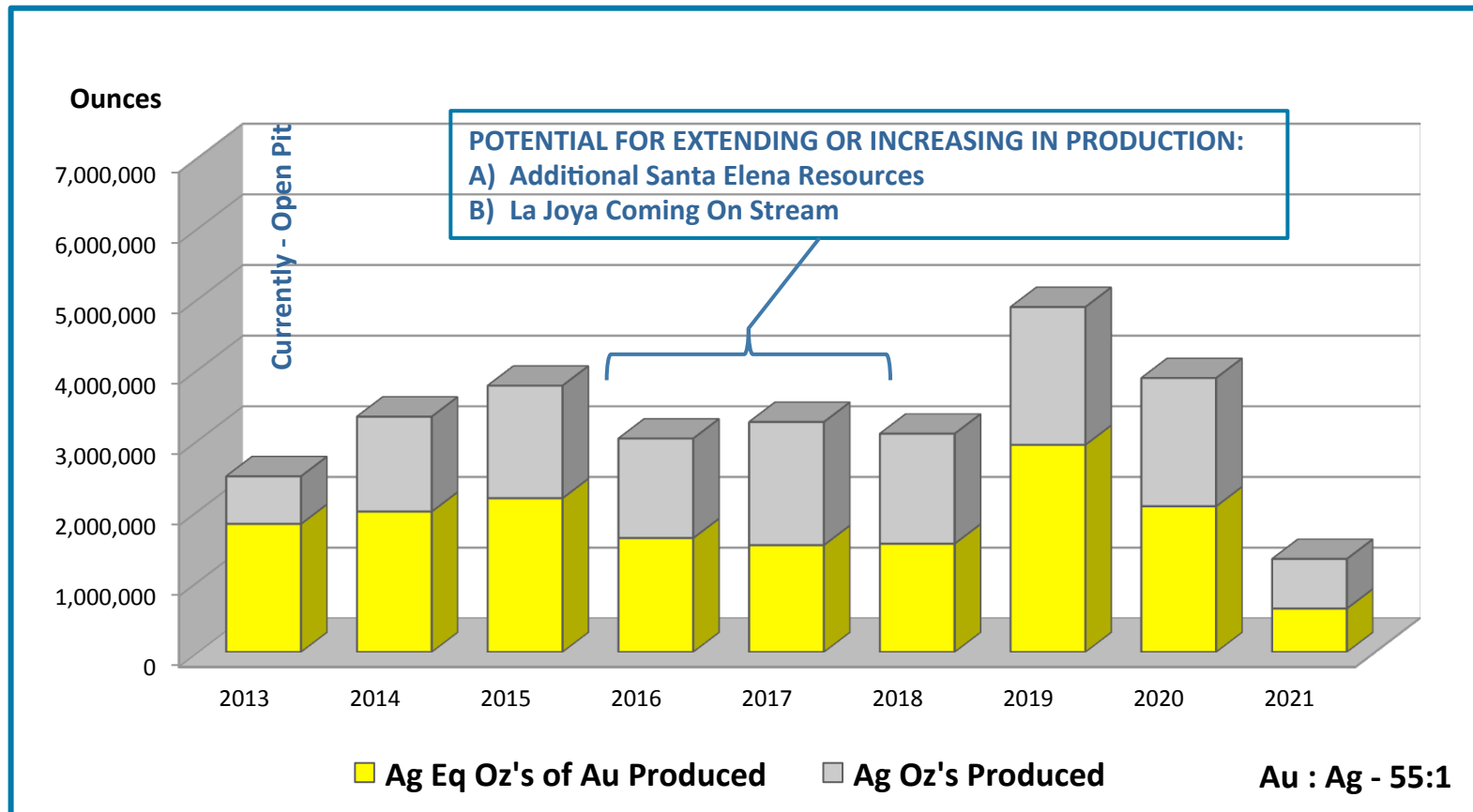
¹ The economic analysis considers SilverCrest delivering a remaining 31,000 ounces of gold at a price of US\$350/oz. under the Sandstorm Agreement. It does not include the effect of the option held by Sandstorm to participate in the future underground mine production.

² Operating cost per AgEQ oz. sold varies between \$9.6 and \$12.6 over the life of mine

³ Excludes sunk costs, of 24.3 million up to April 30, 2013, closure costs and working capital, including contingency

⁴ Includes deductions of \$5 million for closure costs and \$1.8 million for working capital

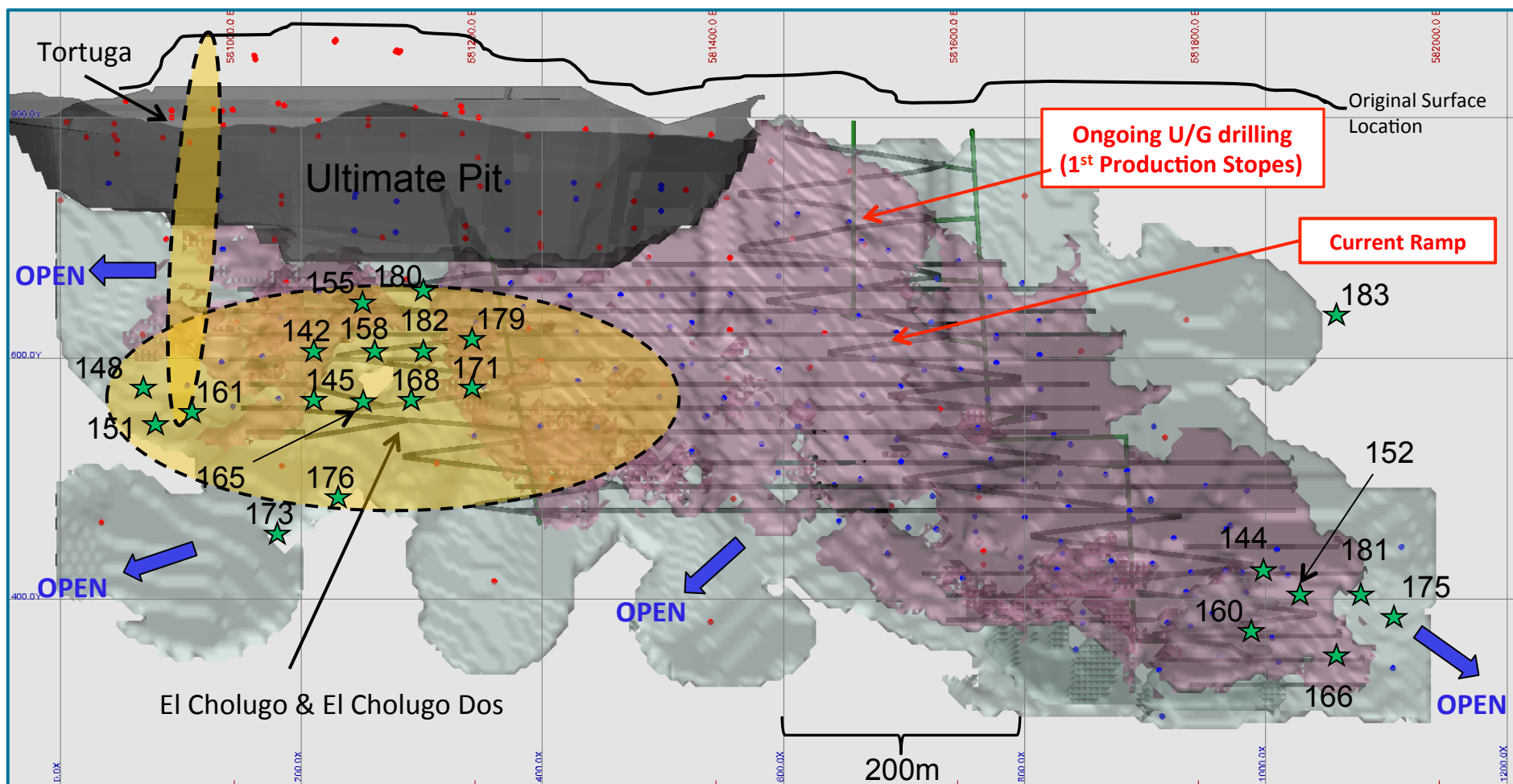
Santa Elena Expansion Production Profile (3000 tpd Mill) Long Hole Stopping Upfront



NOTE : Production Profile based on "Expansion PFS April 2013" results.

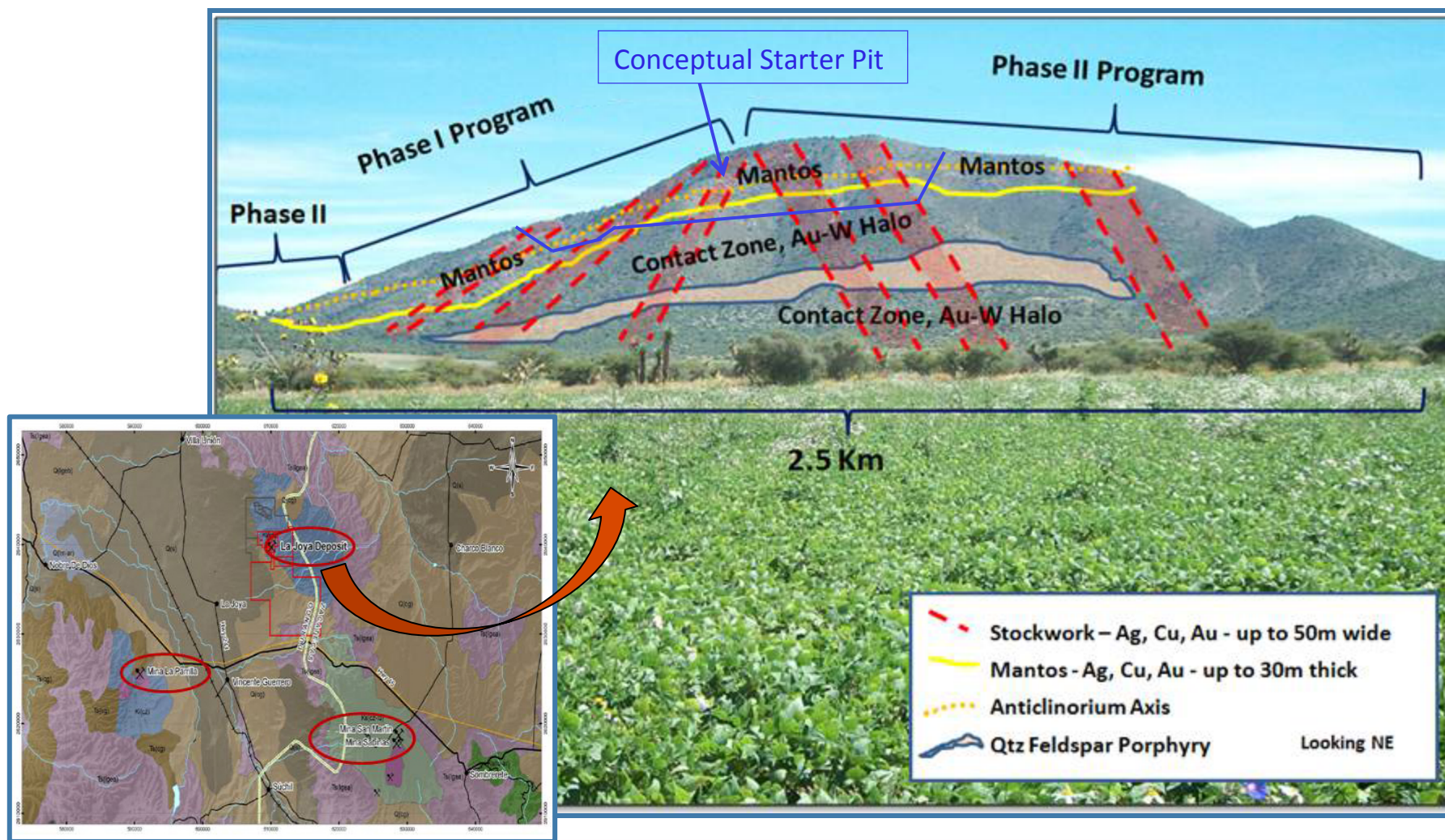
An estimated 750,000 tonnes of open pit ore will be placed on the pad in 2013 and accounted for in early 2014 as additional ore for reprocessing during the mine life.

Santa Elena Mine Expansion – MMZ Long Section A-A' *

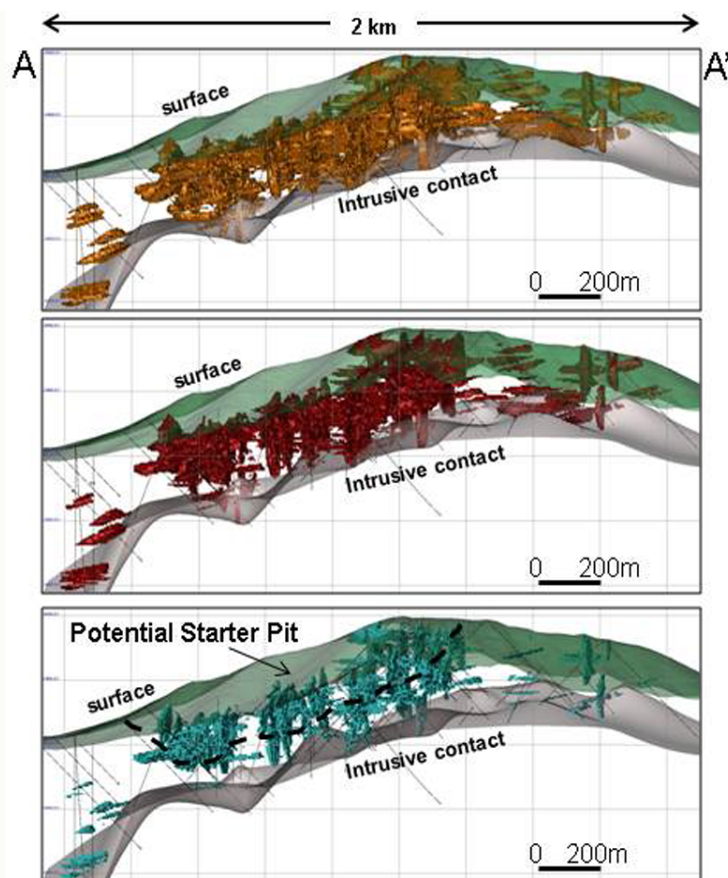


*Looking North – Ultimate pit and U/G development: Est. Reserves in pink and Est. Resources in grey.
Drill holes: red dots 2005-2011, blue 2012-13, green stars Newly Reported

La Joya Project: Geological Model - Phase I & II Drill Program (completed)



La Joya Resource Sections A-A' (Looking NE)



Cut Off Grade >15 gpt Ag Eq.*

Tonnes: 126.7 Million

Grade: 48.7 gpt Ag Eq

Ag Eq Oz: 198.6 Million

Cut Off Grade >30 gpt Ag Eq.*

Tonnes: 71.2 Million

Grade: 69.8 gpt Ag Eq

Ag Eq Oz: 159.8 Million

Cut Off Grade >60 gpt Ag Eq.*

Tonnes: 27.9 Million

Grade: 112.2 gpt Ag Eq

Ag Eq Oz: 100.8 Million

“Potential Starter Pit Parameters”:

- 8-10 year mine life
- Low strip ratio
- 5,000-7,000 tpd throughput
- Est. 4 to 5 million Ag Eq oz/year

Investment Highlights

- Building The Next Mid-Tier Silver-Gold Producer
- Unhedged High Grade, Low Cost Producer
- Excellent Profit Margins, Strong Balance Sheet
- Strong Earnings And Cash Flow
- Significant Increase In Production by 2014
- Good Organic Growth Opportunities
- Expanding Resources & Reserves

Upcoming Catalysts 2013

- Quarterly Production Data & Financial Statements
- Santa Elena Expansion Updates
- Santa Elena Exploration Results
- La Joya Preliminary Economic Assessment



Santa Elena CCD Tank Construction

Institutional Holdings

Institutional Investors
➤ Sprott Inc
➤ Wellington Management
➤ Libra Advisors
➤ AGF Investments
➤ JP Morgan Chase
➤ I.G. Investment Management
➤ Tocqueville Asset Management
➤ Great West Life
➤ US Global Investors

Analyst Coverage

Firm	Analyst
➤ Canaccord Genuity	Nicholas Campbell
➤ Cormark Securities	Graeme Jennings
➤ Dundee Capital	Chris Lichtenheldt
➤ Euro Pacific Capital Inc.	Heiko Ihle
➤ Haywood Securities	Benjamin Asuncion
➤ Jennings Capital	Kwong-Mun Achong Low
➤ PI Financial Corp	Philip Ker
➤ Raymond James	Chris Thompson
➤ Stonecap Securities	Christos Doulis



— PRECIOUS METALS FOCUS —

Contact Us

Tel: (604) 694-1730

Toll Free: 1-866-691-1730

Fax: (604) 694-1761

info@silvercrestmines.com

www.silvercrestmines.com

Suite 501 - 570 Granville Street

Vancouver, BC V6C 3P1



SILVERCRESTMINES.COM



MEDIA



PRESENTATIONS

Scan the QR codes above for more info.
Get the FREE mobile app: <http://gettag.mobi>

