

Acquisition & Exploration in Brazil



Tristar Gold

A History of Successful Gold Exploration

2013 Precious Metals Summit - Hong Kong

Disclaimer

Neither TSX Venture Exchange nor its Regulation Services Provider (as that term is defined in the policies of the TSX Venture Exchange) accepts responsibility for the adequacy or accuracy of this presentation. No stock exchange, securities commission or other regulatory authority has approved or disapproved the information contained herein. Certain statements contained in this presentation may constitute forward-looking statements under Canadian securities legislation which are not historical facts and are made pursuant to the "safe harbor" provisions under the United States Private Securities Litigation Reform Act of 1995. Such forward-looking statements are based upon the Company's reasonable expectations and business plan at the date hereof, which are subject to change depending on economic, political and competitive circumstances and contingencies. Readers are cautioned that such forward-looking statements involve known and unknown risks, uncertainties and other factors that may cause a change in such assumptions and the actual outcomes and estimates to be materially different from those estimated or anticipated future results, achievements or position expressed or implied by those forward-looking statements. Risks, uncertainties and other factors that could cause the Company's plans to change include changes in demand for and price of gold and other commodities (such as fuel and electricity) and currencies; changes or disruptions in the securities markets; legislative, political or economic developments in Brazil; the need to obtain permits and comply with laws and regulations and other regulatory requirements; the possibility that actual results of work may differ from projections/expectations or may not realize the perceived potential of the company's projects; risks of accidents, equipment breakdowns and labor disputes or other unanticipated difficulties or interruptions; the possibility of cost overruns or unanticipated expenses in development programs; operating or technical difficulties in connection with exploration, mining or development activities; the speculative nature of gold exploration and development, including the risks of diminishing quantities of grades of reserves and resources; and the risks involved in the exploration, development and mining business. The Company disclaims any intention or obligation to update or revise any forward-looking statements whether as a result of new information, future events or otherwise.

About TriStar Gold

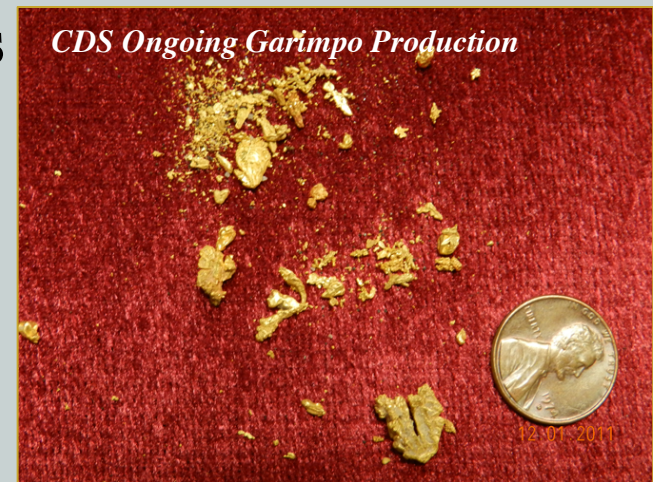
TriStar Gold, Inc. is a gold exploration company that exclusively focuses on Brazil.

TriStar Gold is TSX Venture listed under the symbol TSG.

TriStar Gold is a spin-off of Brazauro Gold (2.6 million oz. resource) that was sold to Eldorado Gold in 2010.

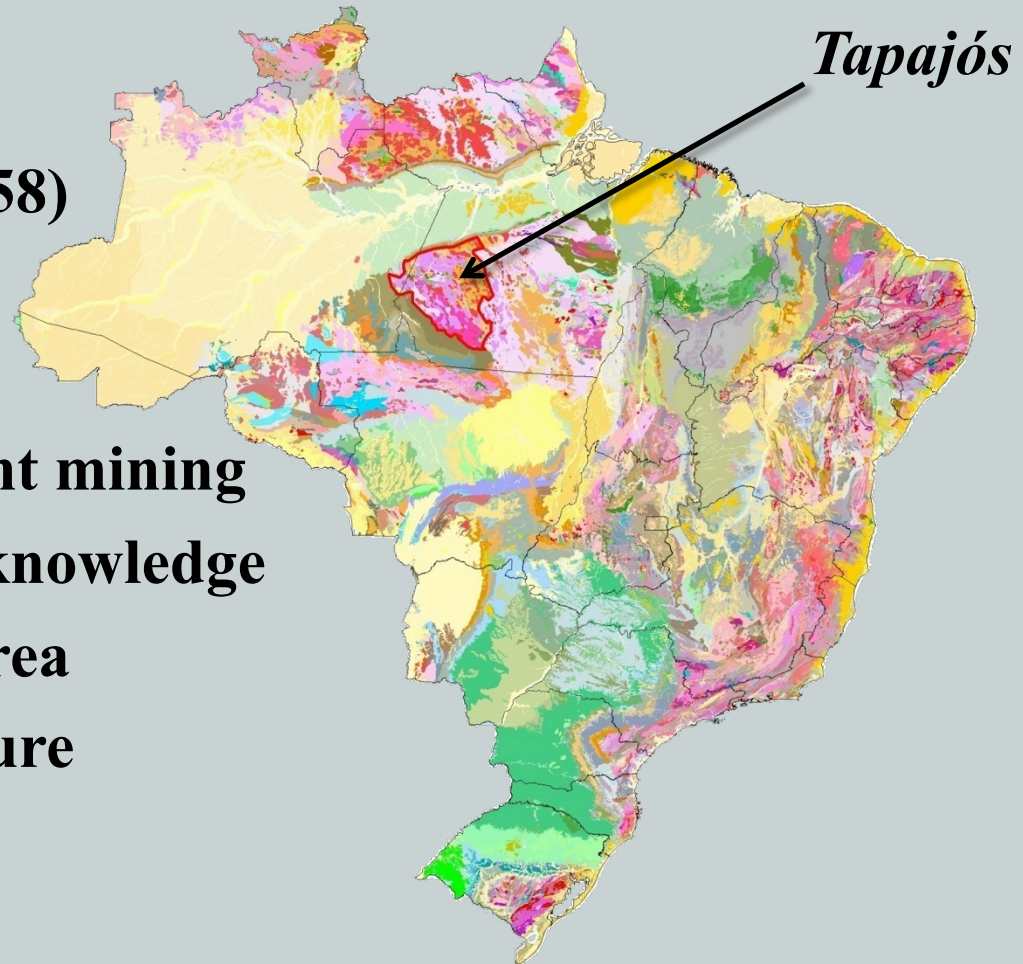
Corporate Mission

- ◆ **To discover multimillion ounce low-cost gold deposits in Brazil**
 - *Exploration is focused in the historically rich, gold producing region of Tapajós in Pará State*
- ◆ **Current Projects**
 - *Castelo de Sonhos (CDS):*
12 claims & exploration licenses totaling 81,351 hectares
 - *Bom Jardim:* **1 exploration license totaling 8,829 hectares**

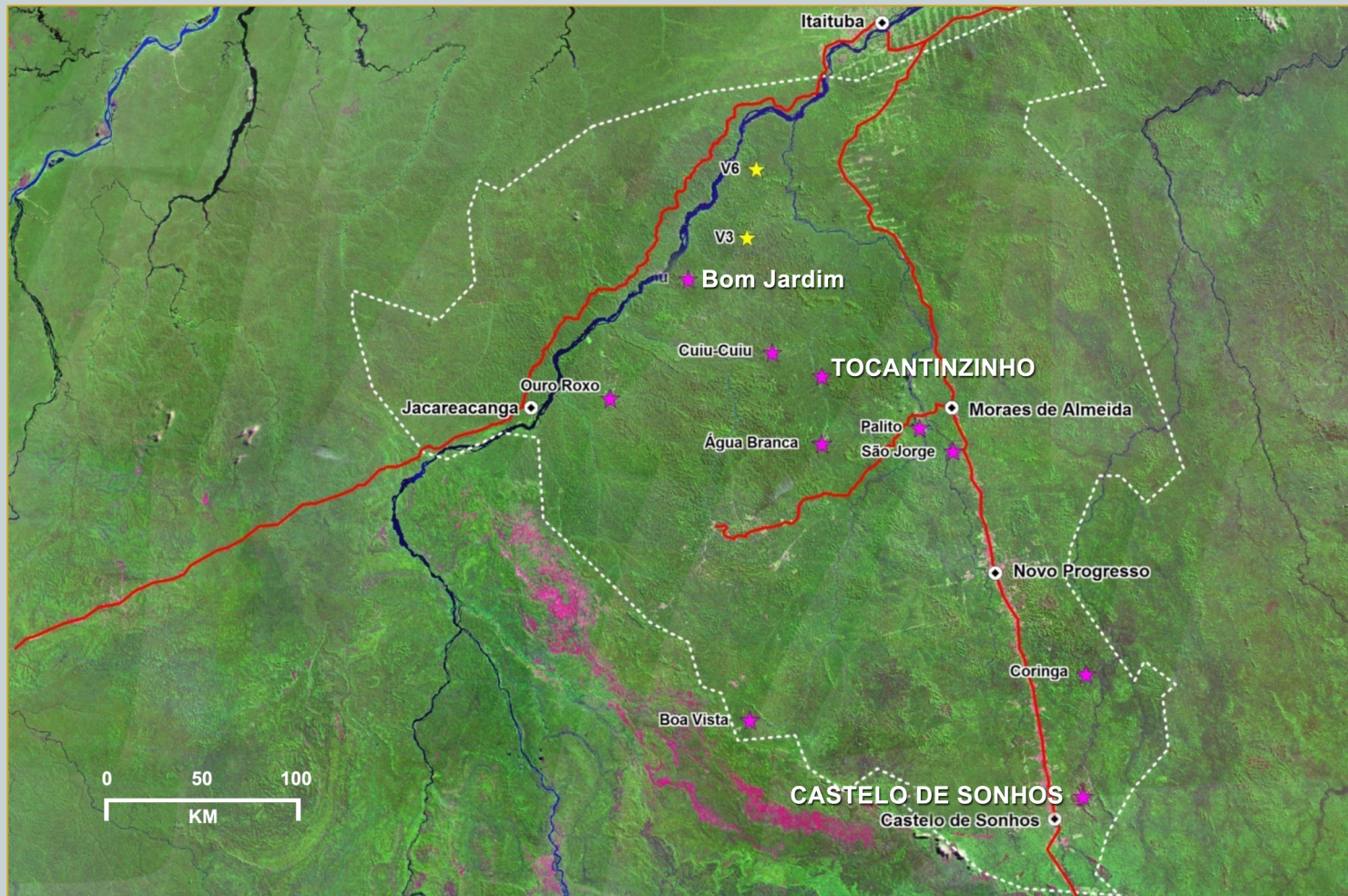


Tapajós Settings & Facts

- ◆ +30 MOz *Au* (since 1958)
- ◆ +350 *garimpos*
- ◆ 135,000 Km²
- ◆ Currently no significant mining
- ◆ Improving geological knowledge
- ◆ Vast under-explored area
- ◆ Improving infrastructure



Tapajós Exploration Activities



Castelo de Sonhos

- ◆ **Access to National Road and Power line (128KVA) within 15 km**
- ◆ **Project located more than 20 km away from any restricted/protected area**
- ◆ **One of the latest and richest alluvial garimpos in the Tapajós Mineral Province. Estimated gold production 300,000 oz**
- ◆ **Exploration in 95/96 (Barrick) located two large and high level gold in-soil anomalies**
 - *Esperança South: 2,500 m x 800 m (> 100 ppb Au)*
 - *Esperança Center: 2,500 m x 800 m (> 250 ppb Au)*
 - *Positive trench and drill intercepts*

Portion Already Paved of BR-163

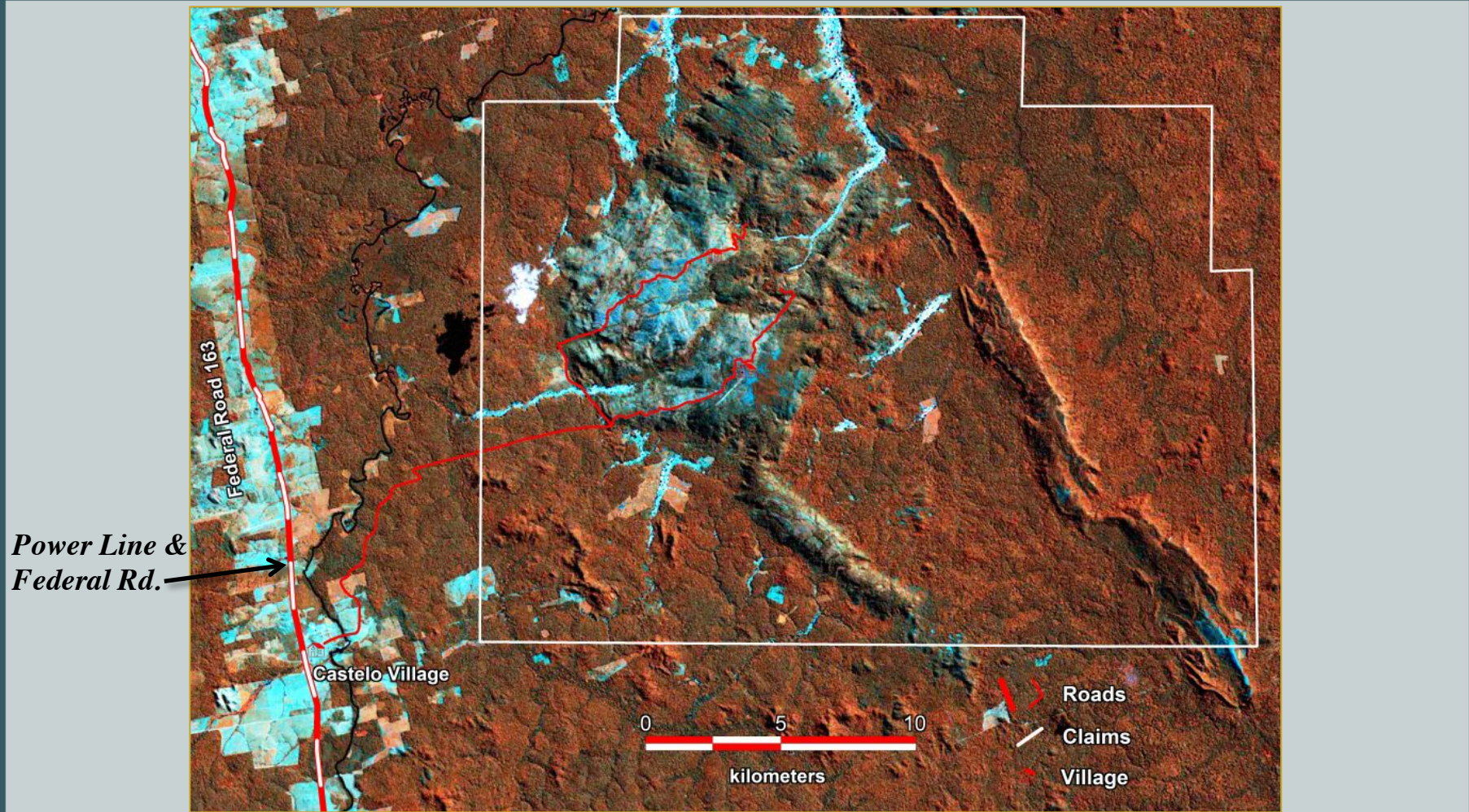


128KVA Power Line at BR-163



CDS Project Access

Mineral rights cover 81,351 hectares (201,023 acres)



Power Line & Federal Rd.

CDS Geological Setting

- ◆ **10 x 15 km plateau rising 300m above surrounding terrain**
- ◆ **All streams draining plateau have been mined for gold**
- ◆ **Plateau made up of folded proterozoic quartzites, meta-arenites and meta-conglomerates (palaeo-placer)**
- ◆ **Geophysics and drilling indicate presence of underlying intrusives**
- ◆ **Intrusives potential gold and/or heat source**



CDS Exploration Program

(From 02/2011-12/2012)

◆ Soil Sampling

- 7,458 soil samples in 8 targets
- Confirmation Barrick soil anomalies
- Remaining target area

◆ Airborne Geophysical Survey

- Area covered 790 sq km/7,019 linear km
- Flight height 100 meters

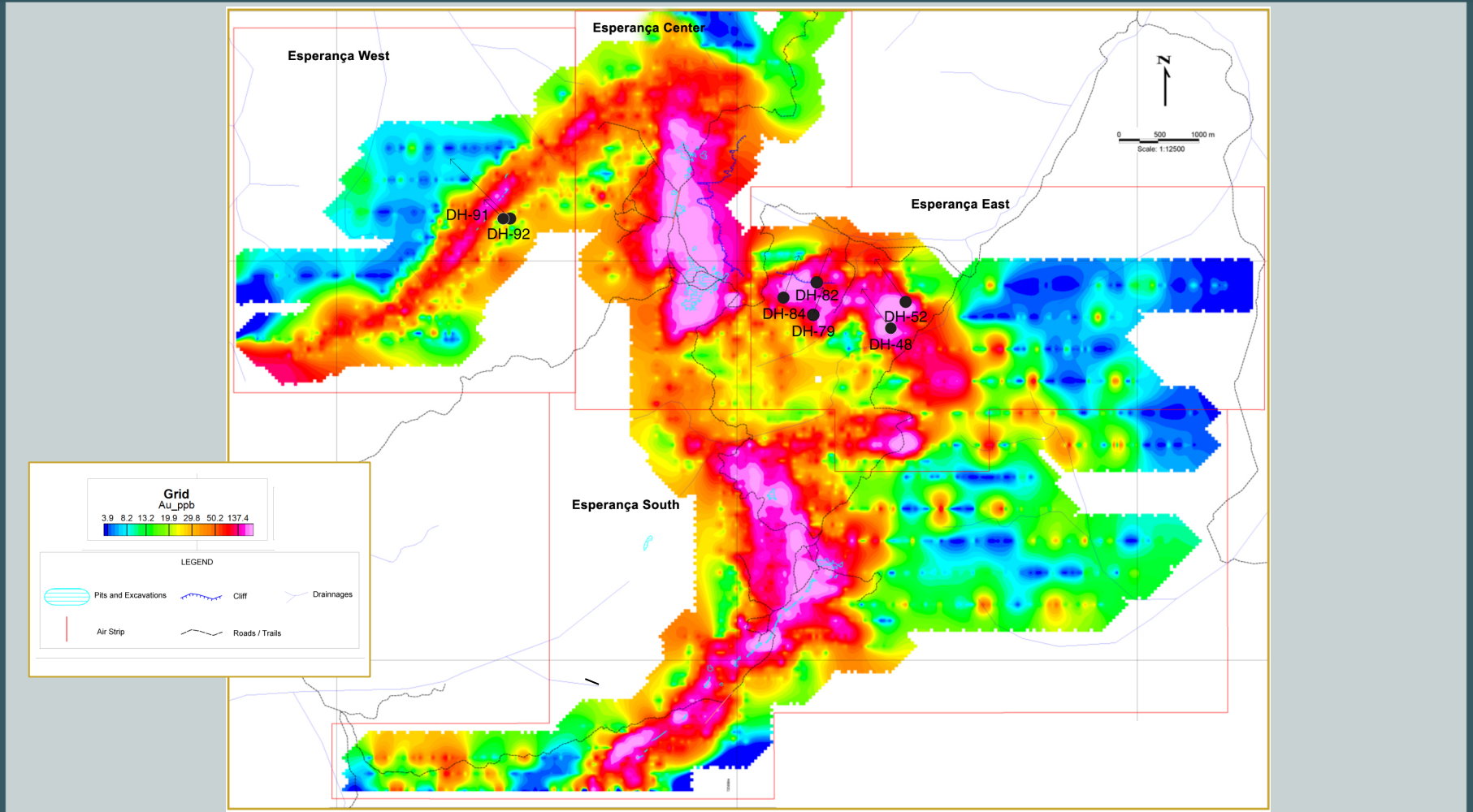
◆ Diamond Drilling

- | | | |
|--------------------|----------------------|-------------------|
| - Esperança Center | 34 drill holes | 5,667 meters |
| - Esperança South | 52 drill holes | 5,455 meters |
| - Esperança East | 5 drill holes | 588 meters |
| - Esperança West | <u>2 drill holes</u> | <u>394 meters</u> |
| | 93 drill holes | 12,103 meters |

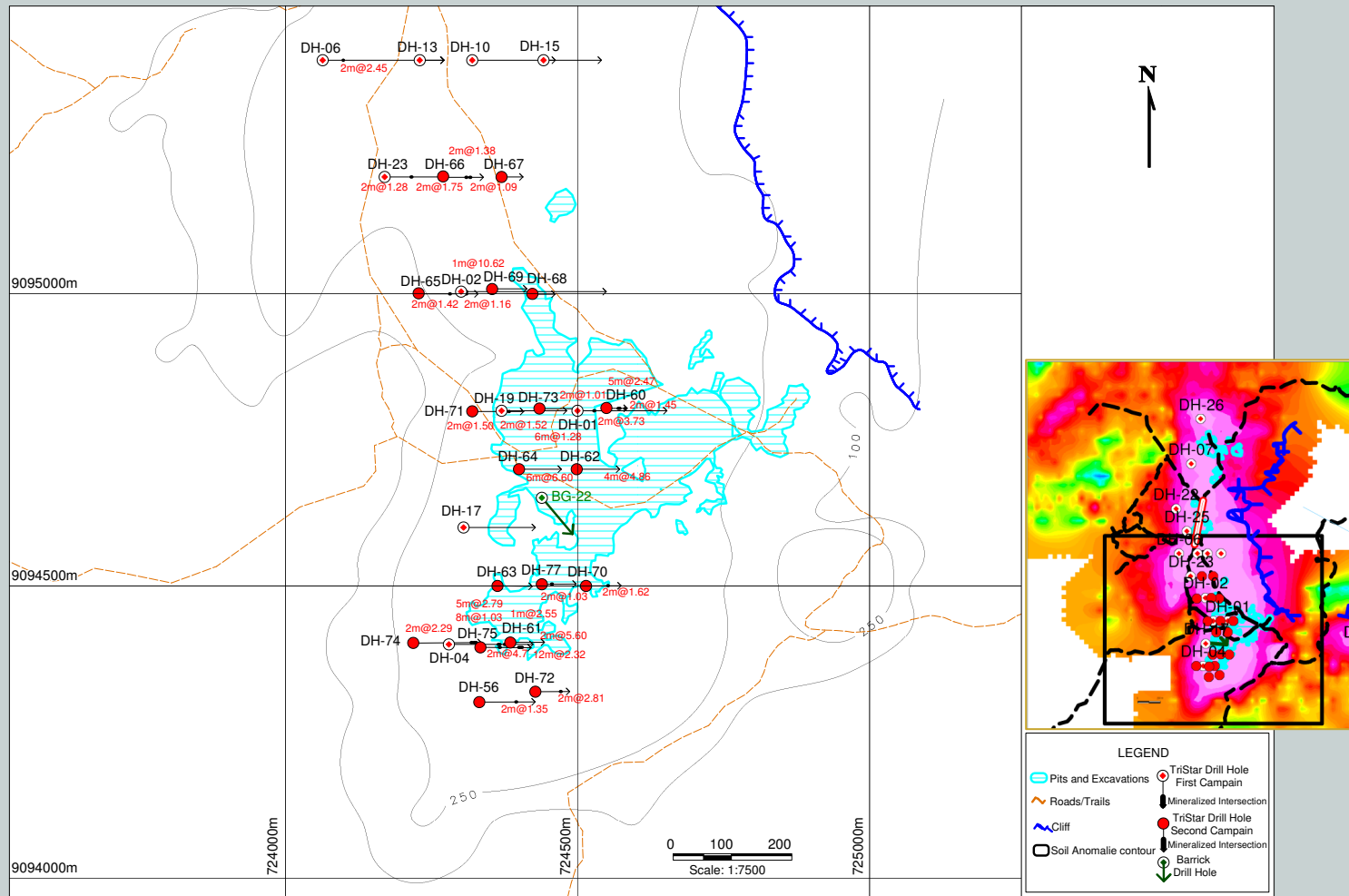


*Garimpeiro Pit Along the
3,200m Long Workings*

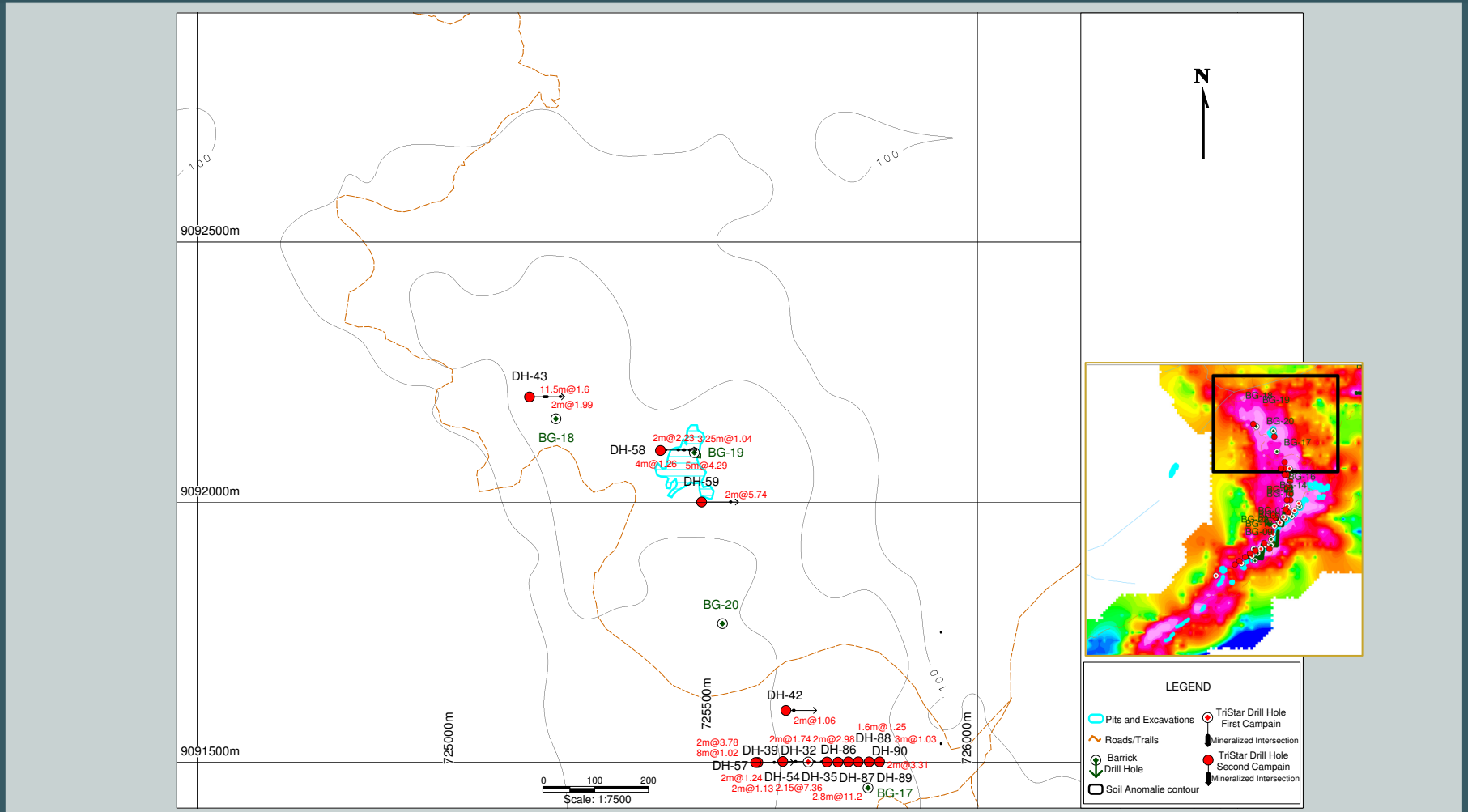
CDS Soil Anomalies & Detail



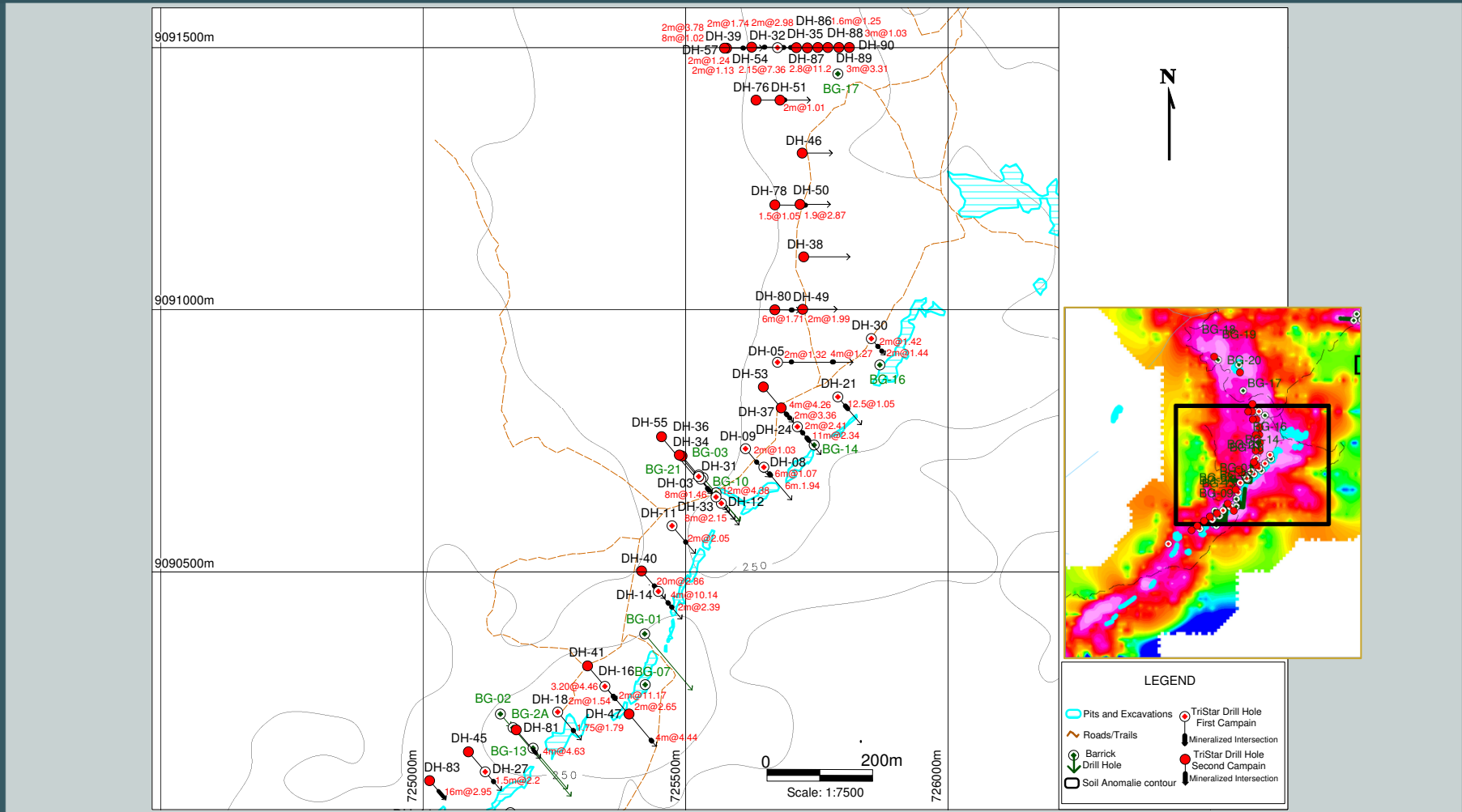
CDS Esperança Center (south)



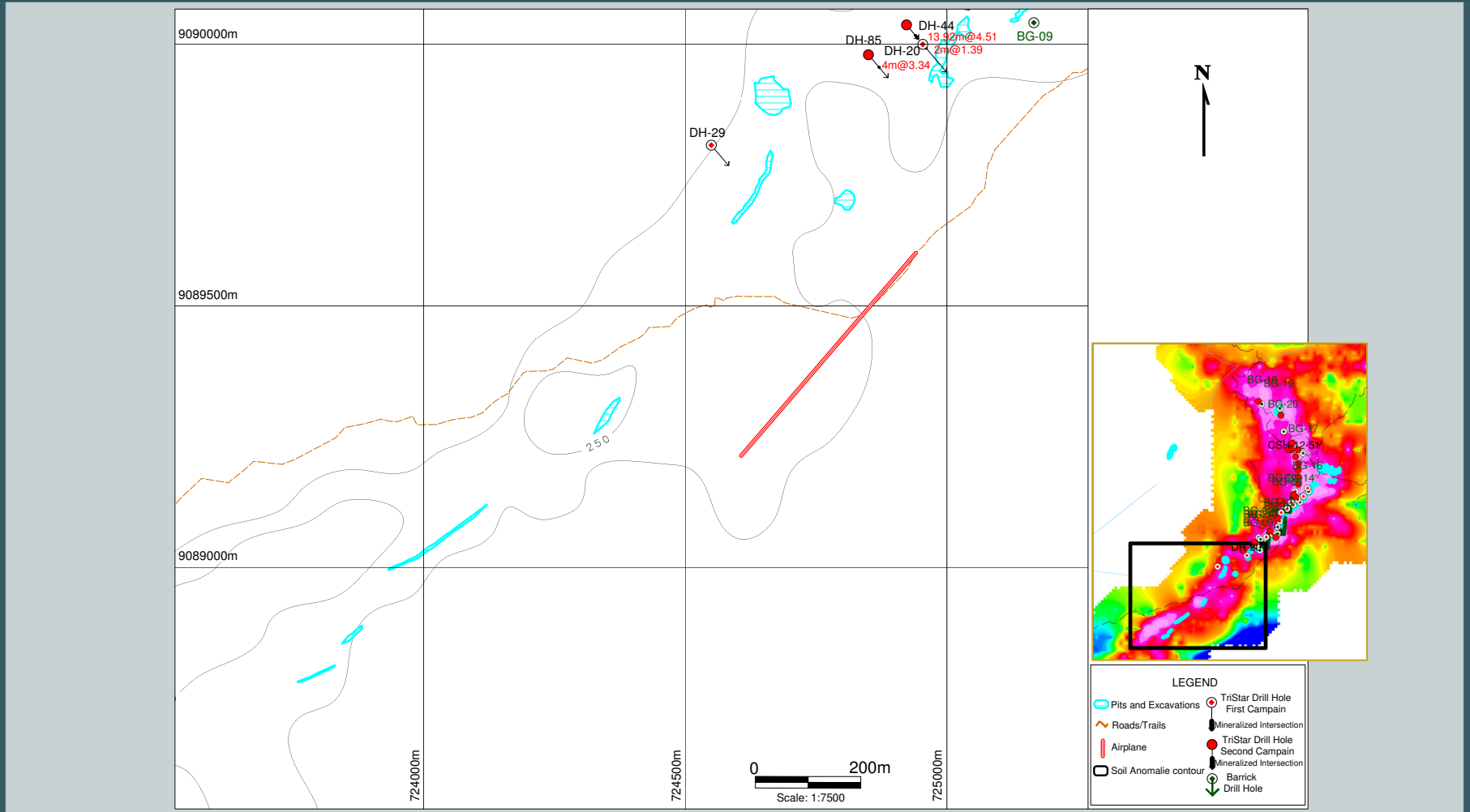
CDS Esperança South (north)



CDS Esperança South (center)



CDS Esperança South (south)



3,200 Meters of Garimpeiro Hard Rock Workings



16360 Park Ten Place, Suite 125, Houston, TX 77084 | Tel: 281-579-3400 | www.TriStarAU.com | TSX.V: TSG

Garimpeiro Activity



CDS Drill Results - South

Hole	Intercept (Au)	From (m)	To (m)
CSH-03	8.00 m @ 2.15 g/t	76.00	84.00
CSH-05	2.00 m @ 1.32 g/t 4.00 m @ 1.27 g/t	45.00 182.00	47.00 186.00
CSH-08	6.00 m @ 1.94 g/t	28.00	34.00
CSH-09	2.00 m @ 1.03 g/t 6.00 m @ 1.07 g/t	56.00 86.00	58.00 92.00
CSH-11	4.00 m @ 1.16 g/t	67.00	71.00
CSH-14	4.00 m @ 10.14 g/t 2.00 m @ 2.39 g/t	47.00 66.00	51.00 68.00
CSH-16	2.00 m @ 11.17 g/t 2.00 m @ 2.65 g/t	50.00 111.00	52.00 113.00
CSH-18	1.75 m @ 1.79 g/t	79.00	80.75
CSH-20	2.00 m @ 1.39 g/t	14.00	16.00
CSH-21	12.50 m @ 1.05 g/t	35.50	48.00
CSH-24	2.00 m @ 2.41 g/t 11.00 m @ 2.34 g/t	26.00 46.00	28.00 57.00
CSH-27	1.50 m @ 2.23 g/t	39.80	41.30
CSH-30	2.00 m @ 1.22 g/t 2.00 m @ 1.44 g/t	25.00 51.00	27.00 53.00
CSH-31	12.00 m @ 4.27 g/t	76.00	88.00
Including	4.70 m @ 8.43 g/t	82.30	87.00
CSH-32	2.15 m @ 7.36 g/t 2.80 m @ 11.21 g/t	20.85 43.00	23.00 45.80
CSH-35	2.00 m @ 2.98 g/t	24.00	26.00
CSH-36	8.00 m @ 1.46 g/t	119.00	127.00

Hole	Intercept (Au)	From (m)	To (m)
CSH-37	2.00 m @ 4.26 g/t 2.00 m @ 3.36 g/t	25.00 41.00	27.00 43.00
CSH-39 or	2.00 m @ 1.24 g/t 2.00 m @ 1.13 g/t 32.00 m @ 0.51 g/t	52.00 82.00 52.00	54.00 84.00 84.00
CSH-40	20.00 m @ 2.86 g/t	63.00	83.00
Including	4.00 m @ 6.19 g/t 6.00 m @ 4.74 g/t	69.00 77.00	73.00 83.00
CSH-41	3.20 m @ 4.46 g/t 2.00 m @ 1.54 g/t	79.20 132.00	82.40 134.00
CSH-42	2.00 m @ 1.06 g/t	24.00	26.00
CSH-43	11.50 m @ 1.60 g/t 2.00 m @ 1.99 g/t	48.50 102.00	60.00 104.00
CSH-44 Including	13.90 m @ 4.51 g/t 7.90 m @ 7.38 g/t	45.00 51.00	58.90 58.90
CSH-47 Including	4.00 m @ 4.44 g/t 2.00 m @ 8.34 g/t	111.00 113.00	115.00 115.00
CSH-49	2.00 m @ 1.99 g/t	0.00	2.00
CSH-50	1.90 m @ 2.87 g/t	3.10	5.00
CSH-51	2.00 m @ 1.01 g/t	12.00	14.00
CSH-53	2.00 m @ 0.77 g/t 2.00 m @ 0.72 g/t	14.00 28.00	16.00 30.00
CSH-54	2.00 m @ 1.74 g/t 3.50 m @ 0.96 g/t	41.00 62.50	43.00 66.00
CSH-55	2.00 m @ 0.72 g/t	103.00	105.00

CDS Drill Results - South

Hole	Intercept (Au)	From (m)	To (m)
CSH-57	2.00 m at 0.96 g/t	50.00	52.00
	2.00 m at 3.78 g/t	58.00	60.00
	14.00 m at 0.41 g/t	70.00	84.00
	8.00 m at 1.02 g/t	88.00	96.00
CSH-58	4.00 m at 1.27 g/t	14.00	18.00
	2.00 m at 2.23 g/t	60.00	62.00
	5.00 m at 4.29 g/t	76.00	81.00
	3.25 m at 1.05 g/t	100.75	104.00
CSH-59	1.50 m at 0.71 g/t	15.00	16.50
	2.00 m at 5.74 g/t	95.00	97.00
CSH-78	1.50 m at 1.05 g/t	100.00	101.50
CSH-80	4.00 m at 0.62 g/t	29.00	33.00
	6.00 m at 1.71 g/t	51.00	57.00
CSH-81	4.00 m at 4.63 g/t	98.00	102.00
CSH-83	16.00 m at 2.95 g/t	54.50	70.50
Including and	4.00 m at 4.87 g/t	56.00	60.00
	4.50 m at 5.49 g/t	66.00	70.50
CSH-85	4.00 m at 3.34 g/t	53.00	57.00
CSH-86	1.60 m at 1.25 g/t	14.00	15.60
CSH-87	3.00 m at 1.03 g/t	0.00	3.00
	2.00 m at 3.31 g/t	9.00	11.00
CSH-88	12.70 m at 0.30 g/t	1.30	14.00

CDS Drill Results – Center, East & West

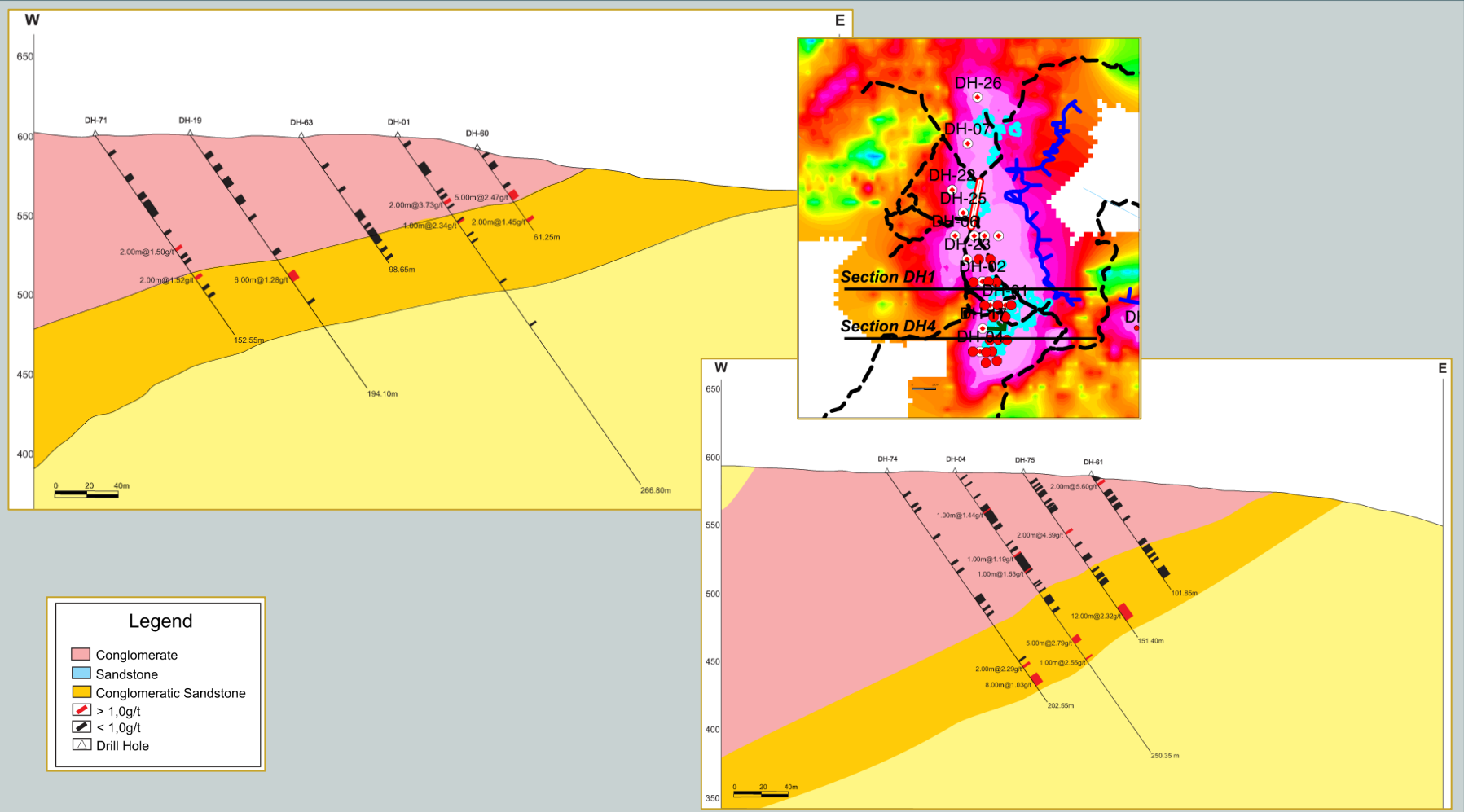
Center			
Hole	Intercept (Au)	From (m)	To (m)
CSH-01	2.00 m @ 3.73 g/t	50.15	52.15
CSH-02	1.00 m @ 10.62 g/t	4.00	5.00
CSH-04	5.00 m @ 2.79 g/t	147.00	152.00
	1.00 m @ 2.55 g/t	166.00	167.00
CSH-06	2.00 m @ 2.45 g/t	60.00	62.00
CSH-19	6.00 m @ 1.28 g/t	107.00	113.00
CSH-23	2.00 m @ 1.28 g/t	79.00	81.00
	2.00 m @ 1.75 g/t	166.00	168.00
CSH-25	2.00 m @ 1.00 g/t	44.00	46.00
CSH-56	2.00 m at 1.35 g/t	109.00	111.00
CSH-60	2.00 m at 0.77 g/t	14.00	16.00
	5.00 m at 2.47 g/t	34.00	39.00
	2.00 m at 1.45 g/t	54.00	56.00
CSH-61	2.00 m at 5.60 g/t	7.00	9.00
	2.00 m at 0.74 g/t	27.00	29.00
	2.00 m at 0.96 g/t	86.00	88.00
CSH-62	4.00 m at 4.86 g/t	71.00	75.00
CSH-64	2.00 m at 0.74 g/t	72.00	74.00
	6.00 m at 6.60 g/t	117.00	123.00
CSH-65	2.00 m at 1.42 g/t	94.00	96.00
	2.00 m at 1.16 g/t	144.00	146.00
CSH-66	2.00 m at 1.38 g/t	68.00	70.00
	2.00 m at 1.09 g/t	78.00	80.00
CSH-70	2.00 m at 1.62 g/t	62.00	64.00

Center			
Hole	Intercept (Au)	From (m)	To (m)
CSH-71	11.00 m at 0.58 g/t	52.00	63.00
	2.00 m @ 1.50 g/t	87.00	89.00
	2.00 m at 1.52 g/t	109.00	111.00
CSH-72	8.00 m at 0.49 g/t	33.00	41.00
	2.00 m at 2.81 g/t	76.00	78.00
CSH-73	2.00 m at 1.01 g/t	106.00	108.00
CSH-74	2.00 m at 2.29 g/t	173.00	175.00
	8.00 m at 1.03 g/t	183.00	191.00
CSH-75	2.00 m at 4.69 g/t	53.00	55.00
	12.00 m at 2.32 g/t	120.00	132.00
CSH-77	2.00 m at 1.03 g/t	30.00	32.00
	2.00 m at 0.70 g/t	42.00	44.00

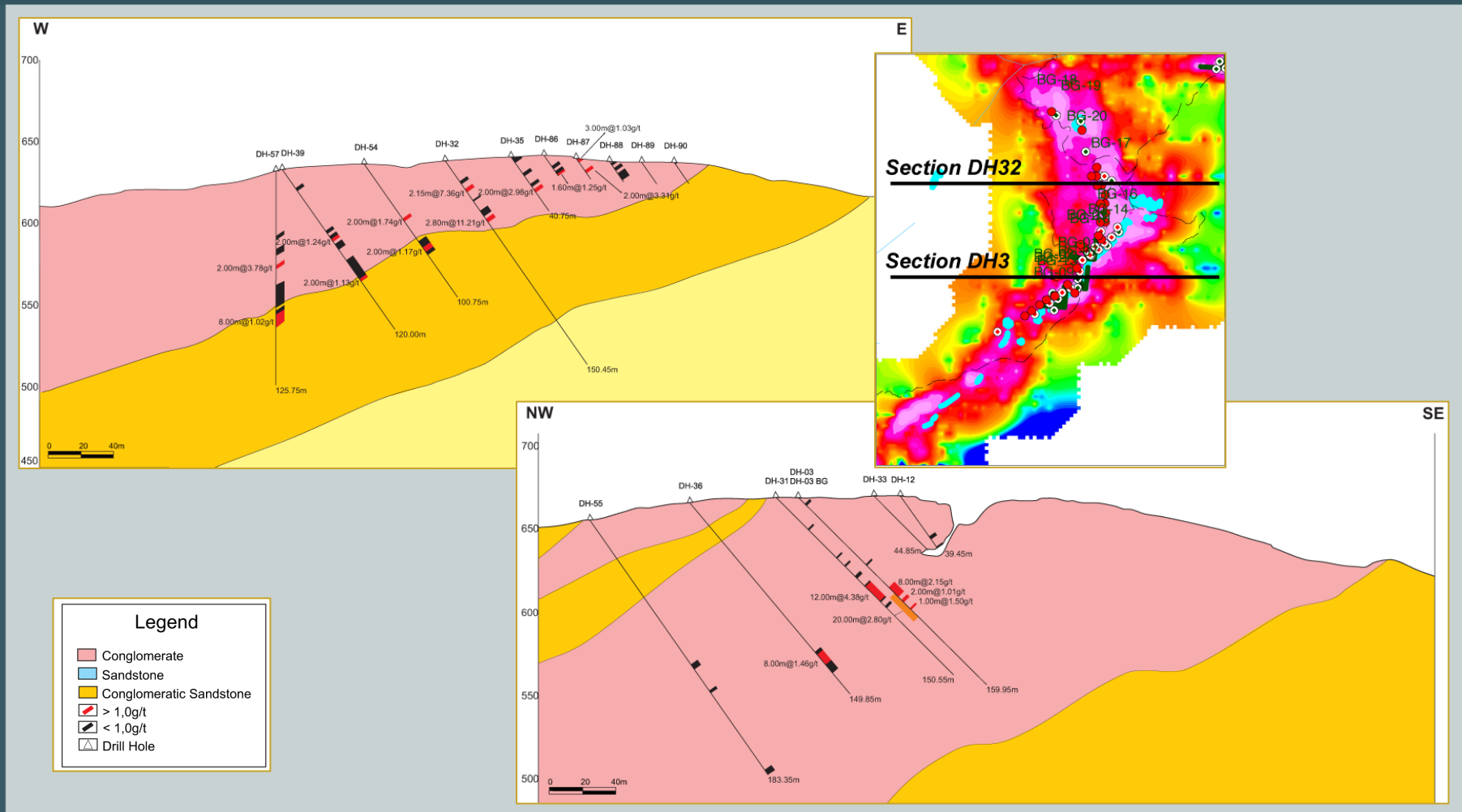
East			
Hole	Intercept (Au)	From (m)	To (m)
CSH-48	2.00 m at 1.14 g/t	117.00	119.00
	1.75 m at 1.19 g/t	123.00	124.75
	11.00 m at 0.64 g/t	117.00	128.00
CSH-52	4.45 m at 0.74 g/t	63.00	67.45
CSH-84	2.00 m at 3.12 g/t	89.00	91.00

West			
Hole	Intercept (Au)	From (m)	To (m)
CSH-92	2.10 m at 4.92 g/t	17.50	19.60

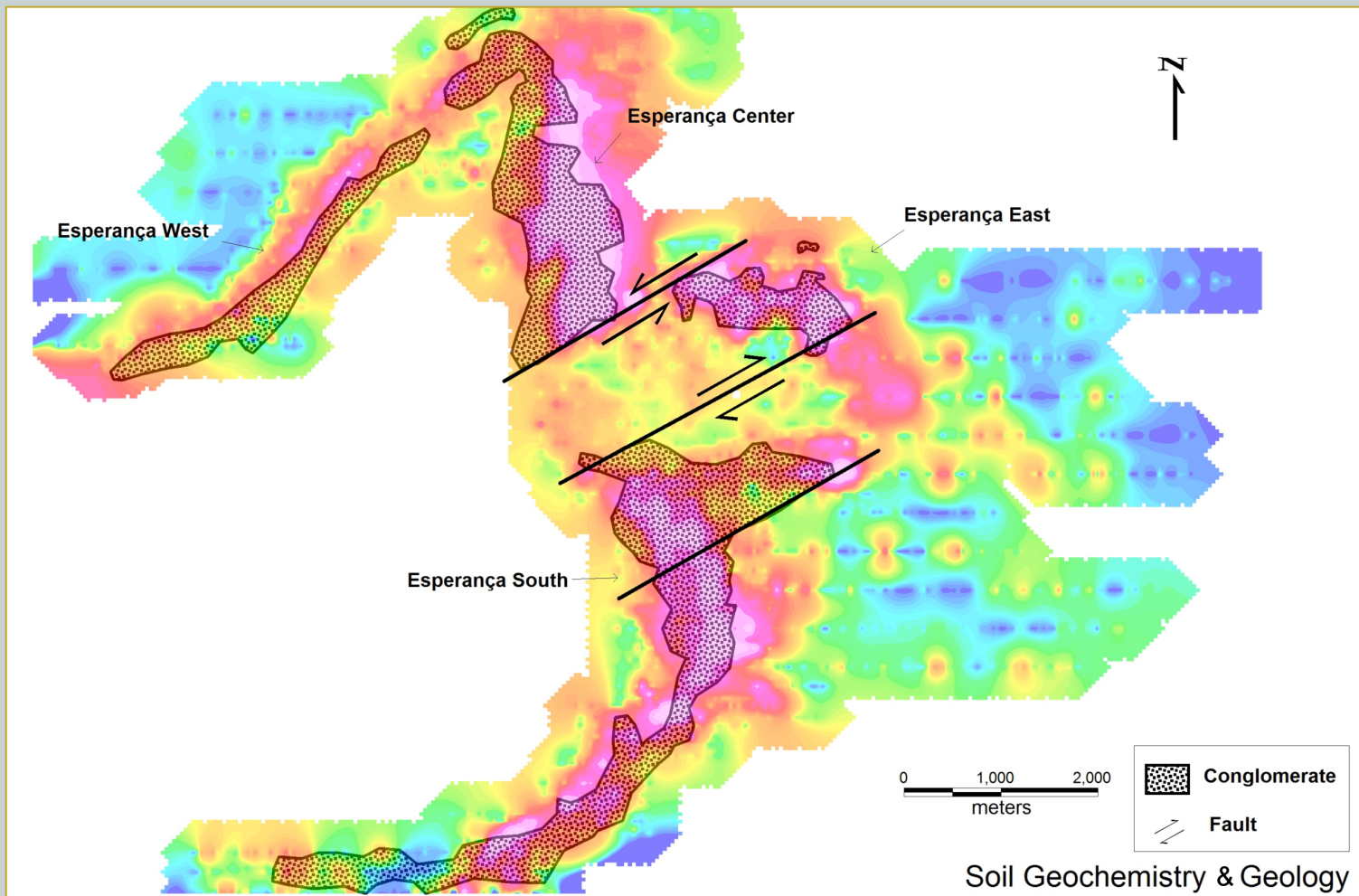
Esperança Center Sections for DH1 & 4



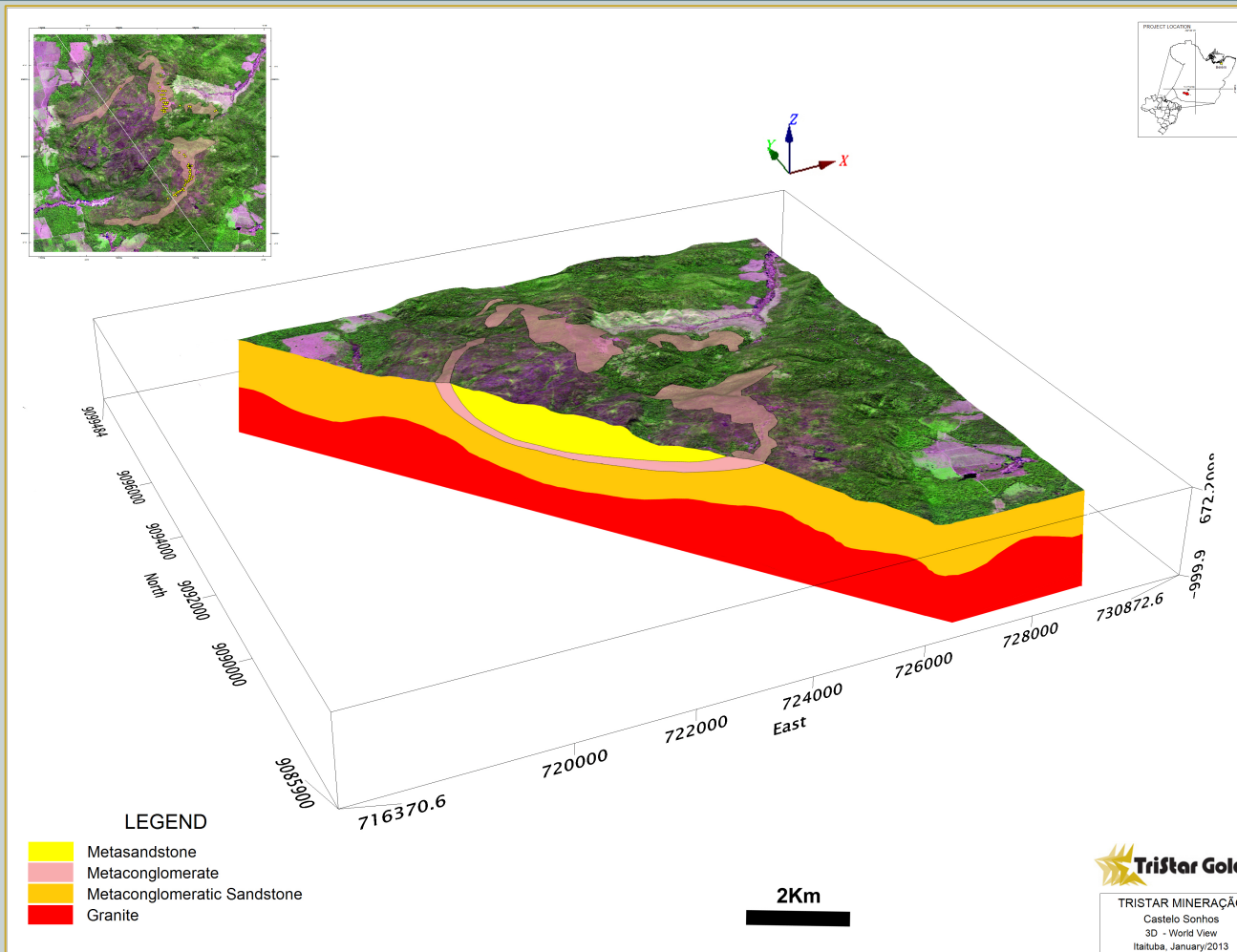
Esperança South Sections for DH32 & 3



CDS Geology vs. Soil Survey



CDS 3-D Schematic Diagram



CDS Summary

- ◆ **Large untested anomalous areas require more drilling**
- ◆ **Drilling results show favorable comparison with the Jacobina palaeo-placer deposit in Bahia and the Tarkwa deposit in Ghana**
- ◆ **Intercept width and grades compare very well with the Jacobina and Tarkwa deposits**
- ◆ **Large area still under explored**



Capital Structure

- ◆ Listed on the TSX Venture Exchange: TSG
- ◆ Common Shares
 - Outstanding 57,499,803
 - Fully Diluted 85,064,803
- ◆ Options 5,665,000
 - Exercise Price for options C\$ 0.20 – 0.81
- ◆ Warrants 21,900,000
 - Exercise price warrants C\$ 0.30
- ◆ Management and Directors control 16% outstanding shares and 21% fully diluted shares
- ◆ *\$2.9 million in cash at 1/11/2013; no debt*



- ◆ *Total number of options currently vested and exercisable is 5,665,000, and exercise proceeds related to these options total C\$ 2,919,000. The options will expire between 7/15/2015 and 1/7/2018. Warrants will expire between 12/20/2015 and 7/31/2017 and their exercise proceeds will be C\$ 6,570,000.*

TriStar Gold Investment

- ◆ **Large scale gold system**
- ◆ **Free gold, i.e. palaeo placer (positive recovery by gravity and minimal cyanide)**
- ◆ **Good infrastructure (power, paved roads & employee access)**
- ◆ **Comparable geologically to historic, but still active, mines (Jacobina & Tarkwa)**
- ◆ **Brazil is a favorable mining venue**