



**ORBIS**GOLD

# **Burkina Faso Gold Projects**

**Precious Metals Summit**

**Beaver Creek - Colorado (05 - 07 September 2012)**

# Important Information

## Disclaimer

This presentation may contain certain statements and projections provided by or on behalf of Orbis Gold Limited (Orbis) with respect to the anticipated future undertakings. These forward-looking statements reflect various assumptions by or on behalf of Orbis. Accordingly, these statements are subject to significant business, economic and competitive uncertainties and contingencies associated with exploration and/or mining which may be beyond the control of Orbis which could cause actual results or trends to differ materially, including but not limited to price fluctuations, exploration results, reserve and resource estimation, environmental risks, physical risks, legislative and regulatory changes, political risks, project delay or advancement, ability to meet funding requirements, factors relating to property title, native title and aboriginal heritage issues, dependence on key personnel, share price volatility, approvals and cost estimates. Accordingly, there can be no assurance that such statements and projections will be realised. Orbis makes no representations as to the accuracy or completeness of any such statement of projections or that any forecasts will be achieved.

Additionally, Orbis makes no representation or warranty, express or implied, in relation to, and no responsibility or liability (whether for negligence, under statute or otherwise) is or will be accepted by Orbis or by any of their respective officers, directors, shareholders, partners, employees, or advisers as to or in relation to the accuracy or completeness of the information, statements, opinions or matters (express or implied) arising out of, contained in or derived from this presentation or any omission from this presentation or of any other written or oral information or opinions provided now or in the future to any interested party or its advisers. In furnishing this presentation, Orbis undertakes no obligation to provide any additional or updated information whether as a result of new information, future events or results or otherwise.

Nothing in this material should be construed as either an offer to sell or a solicitation of an offer to buy or sell securities. It does not include all available information and should not be used in isolation as a basis to invest in Orbis Gold Limited.

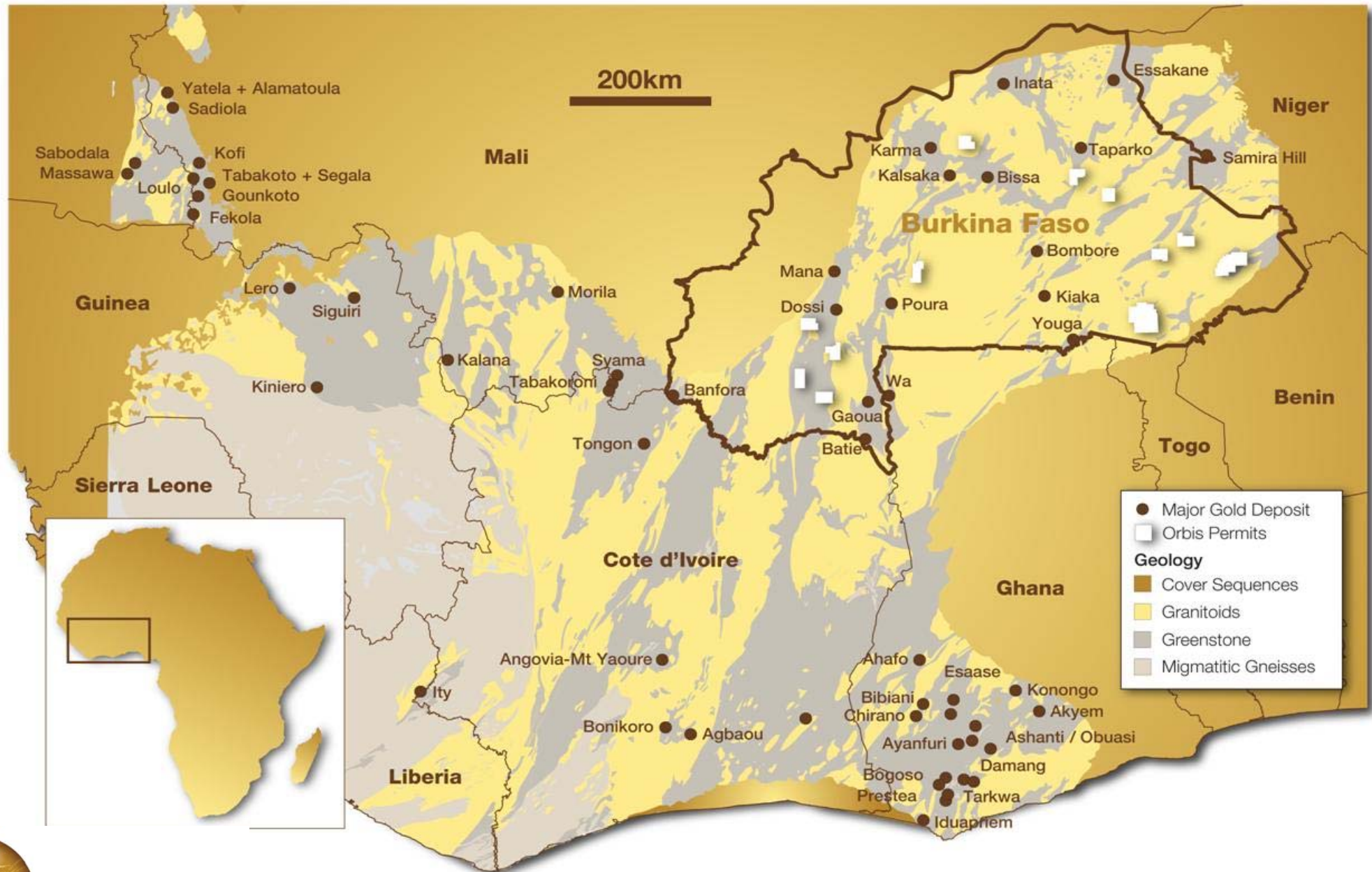
## Competent Persons Statement

The information in this report that relates to Exploration Results is based on information compiled by Mr Peter Spiers B.Sc (Hons) Geol., who is a Member of The Australasian Institute of Mining and Metallurgy. Mr Spiers is a full time employee of the company.

Mr Spiers has sufficient experience which is relevant to the styles of mineralisation and types of deposits under consideration and to the activity which he is undertaking to qualify as a Competent Person as defined in the 2004 Edition of the 'Australasian Code for Reporting of Exploration Results, Mineral Resources and Ore Reserves'. Mr Spiers consents to the inclusion in the report of the matters based on his information in the form and context in which it appears.

# Strategic Land Position / World-Class Gold Province

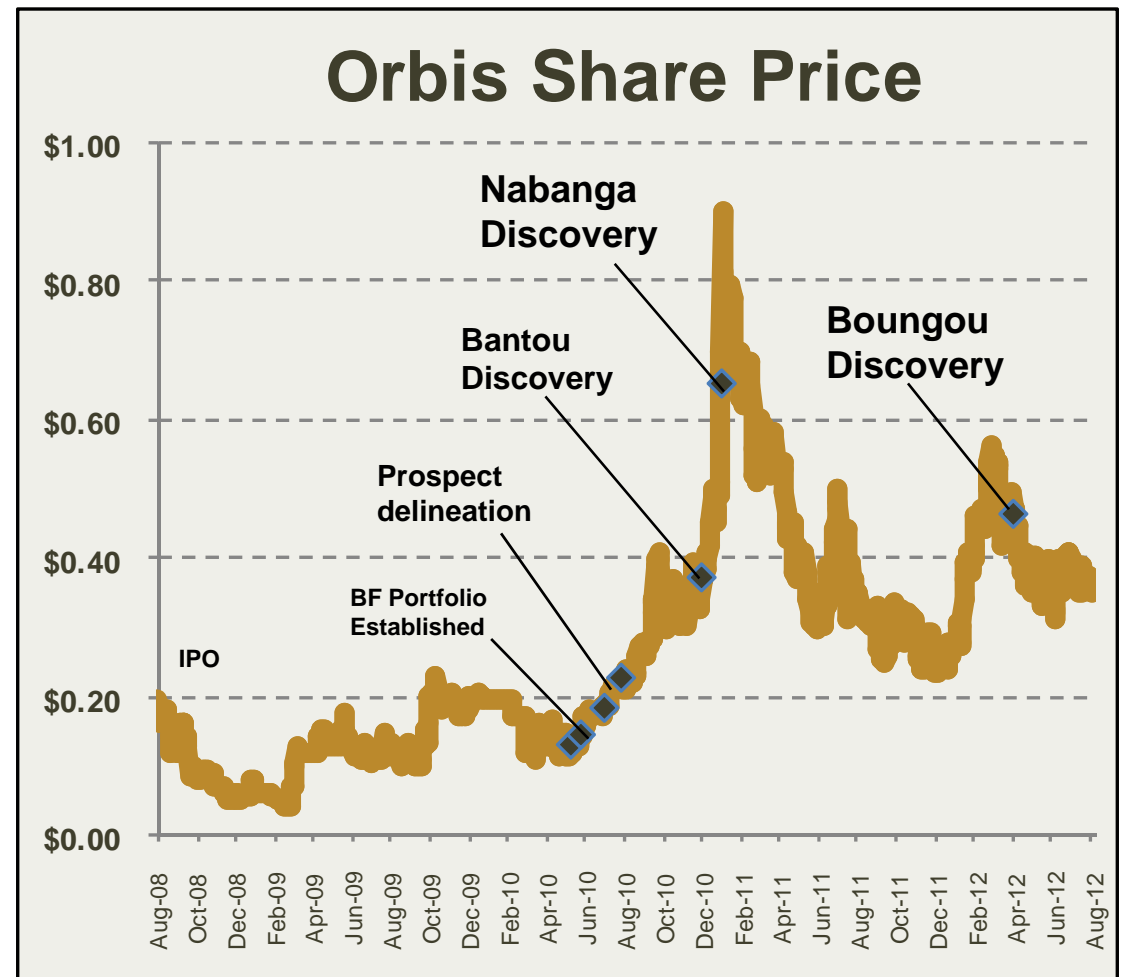
( The Birimian Gold Province is host to more than fifty +1Moz gold deposits )



# Shareholder / Financial Overview

ASX Code:	<b>OBS</b> <sup>(1)</sup>
Shares (ordinary):	167.0m
Options (unlisted):	10.0m
Share Price:	36.0 cents <sup>(2)</sup>
Market Capitalisation:	A\$60m
Cash:	A\$6.0m <sup>(3)</sup>
Major shareholders:	
- DGR Global Limited	27%
- National Nominees	6%
- Tenstar Trading Ltd	6%

} rounded



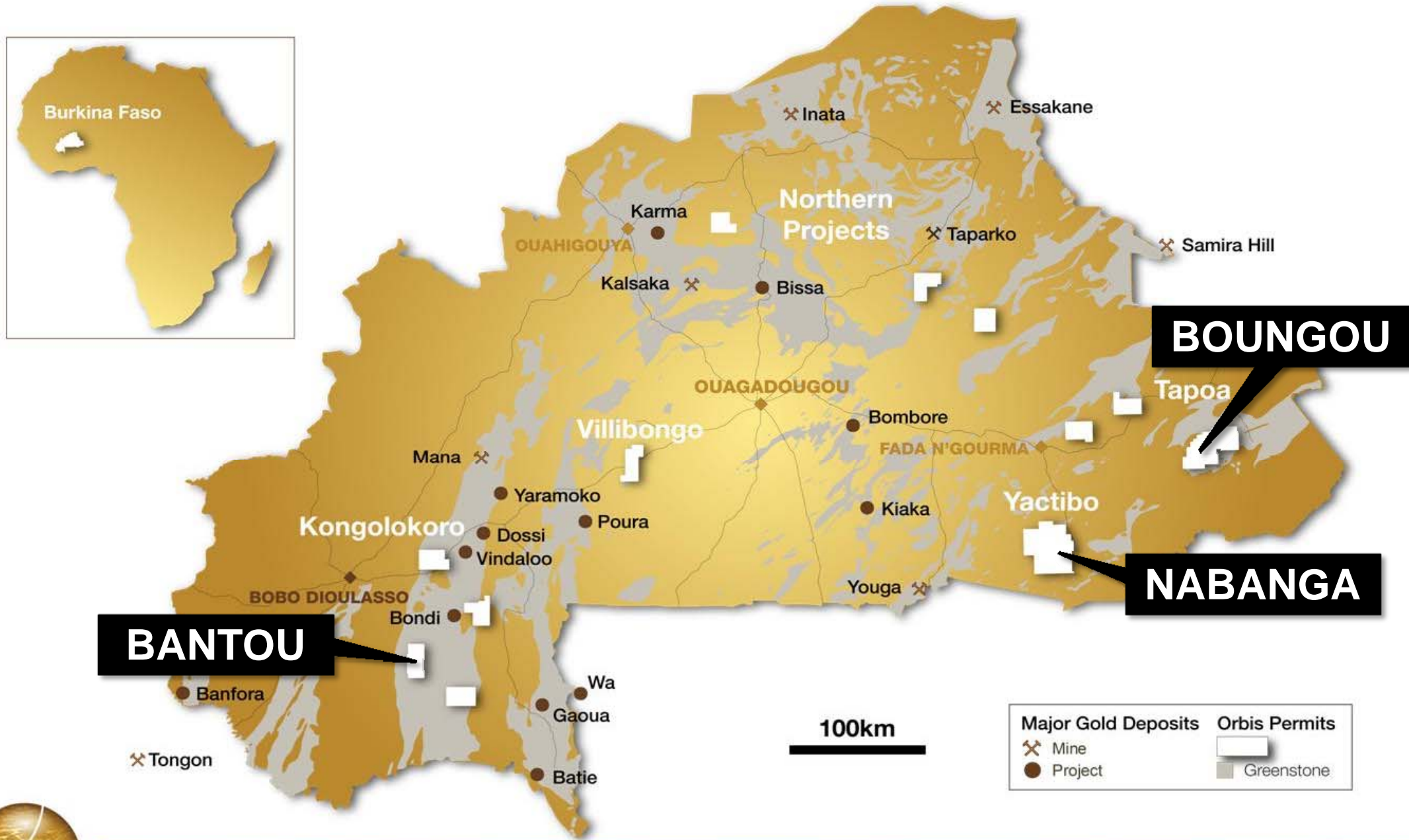
(1) Previously Mt Isa Metals Ltd (ASX:MET)

(2) As at 24<sup>th</sup> August 2012

(3) As at 30<sup>th</sup> June 2012 (unaudited)

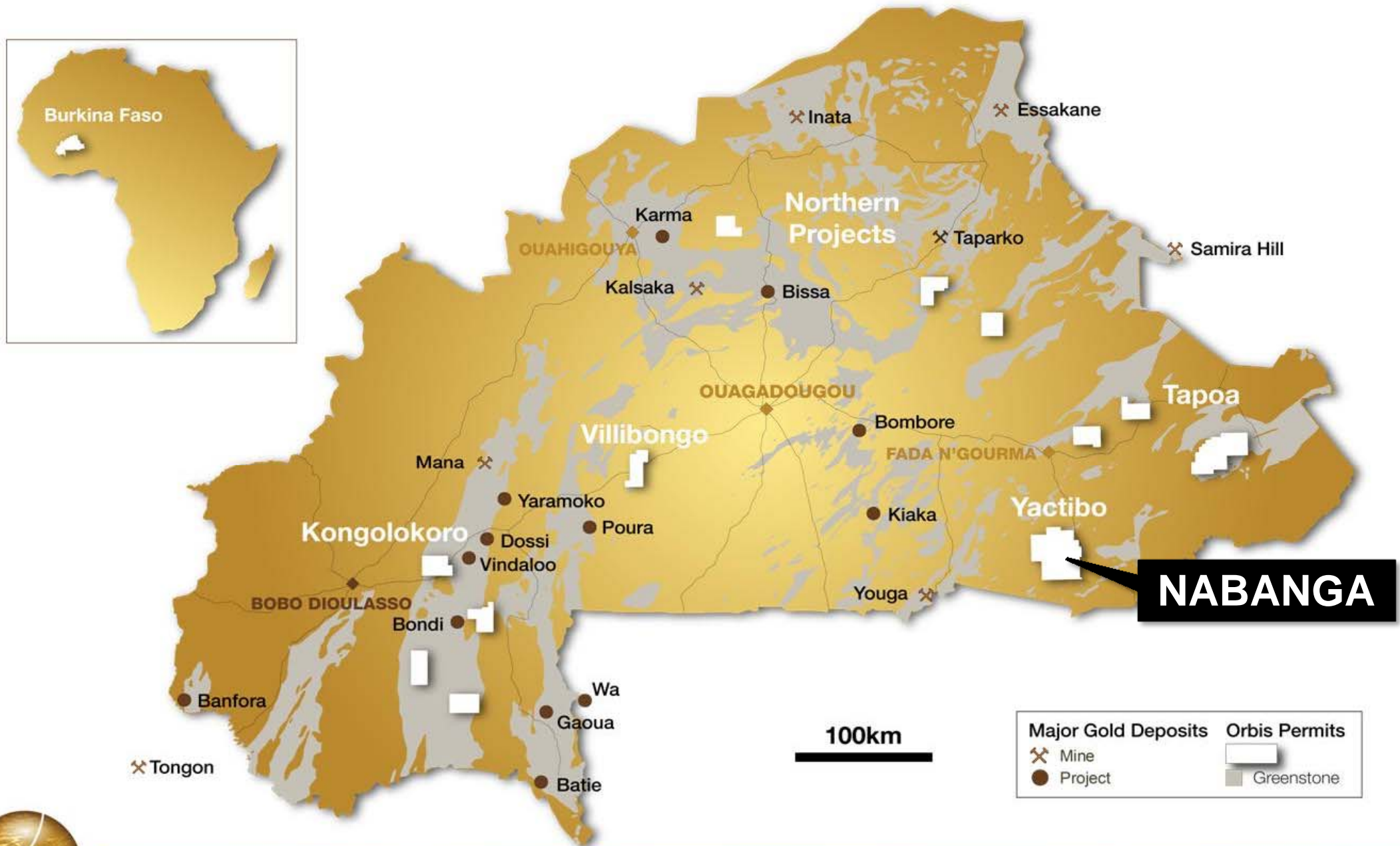
# Orbis Exploration Permits - Burkina Faso

( ~4,000km<sup>2</sup> permit area\* – Multiple advanced gold prospects)



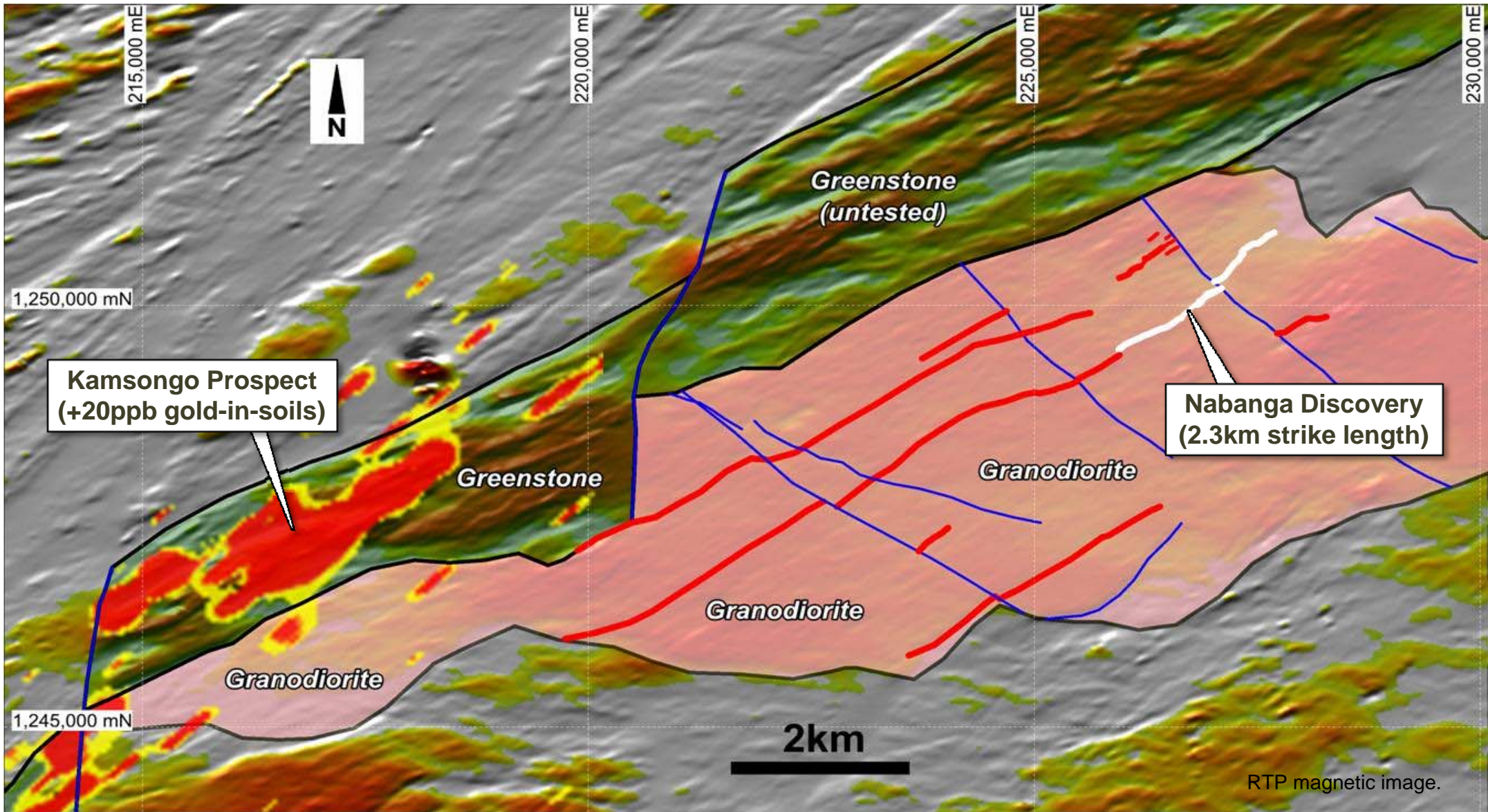
\* Permits held under 3 year option agreements to purchase 100% interest, 2 permits held 100% by Orbis.

# Nabanga – High Grade Gold Discovery

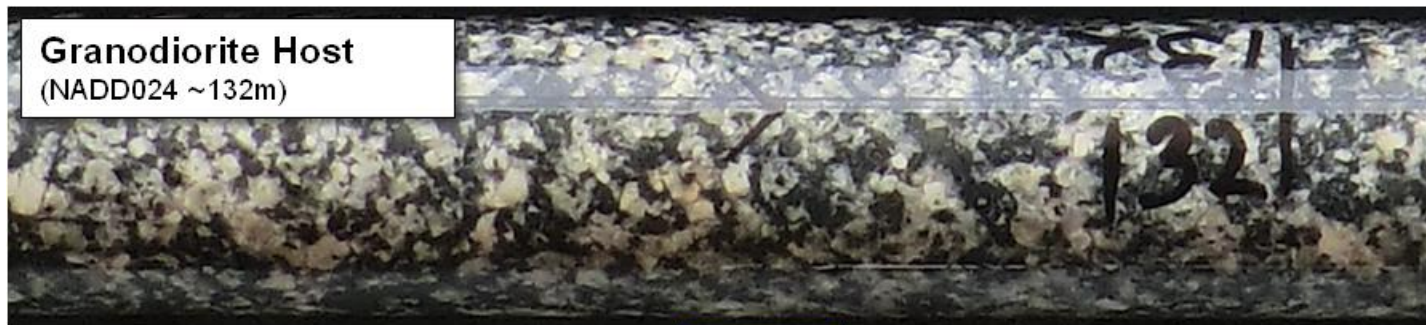


# Nabanga - Regional Geological Setting

( Intrusion-related gold deposit, significant untested regional potential )



# Nabanga – A High Grade Gold System



**Granodiorite Host**  
(NADD024 ~132m)



**Altered Granodiorite**  
(NADD024 ~242m)



**Quartz Vein**  
(NADD024 ~243m)

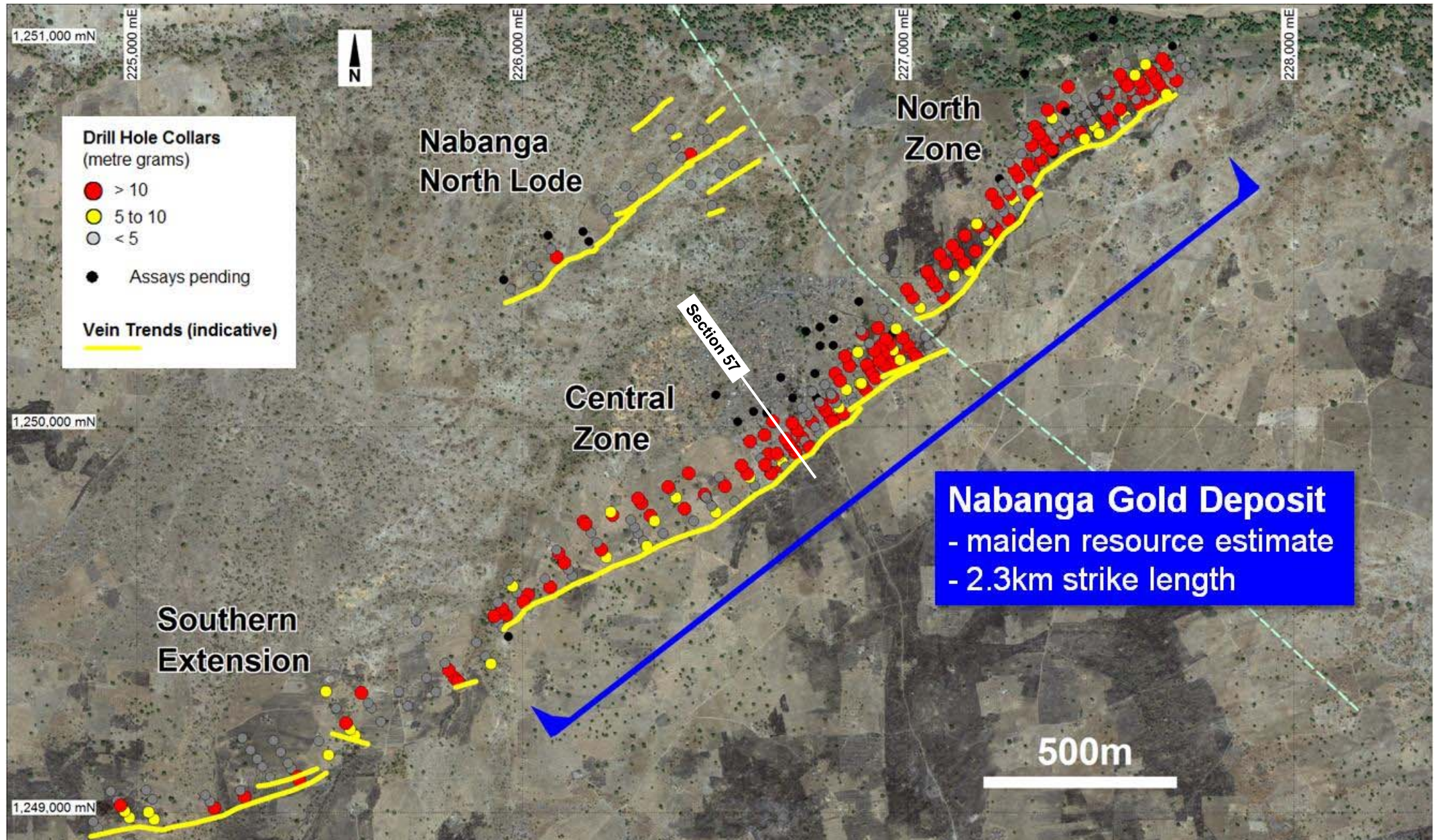
Hole ID	Intersections*	From (m)
NARC091	2m @ 19.00g/t	24
NARC100	3m @ 20.49g/t	72
NARC114	10m @ 17.70g/t	51
NARC135	5m @ 22.99g/t	74
NARC139	3m @ 20.77g/t	33
NARC151	3m @ 20.12g/t	110
NARC172	6m @ 14.44g/t	49
NARC173	6m @ 48.48g/t	74
NARC174	5m @ 26.34g/t	87
NARC190	3m @ 23.46g/t	105
NARC199	4m @ 17.25g/t	28
NARC216	8m @ 12.68g/t	148
NARC218	5m @ 15.62g/t	112
NARC254	6m @ 11.21g/t	145
NARC293	7m @ 17.29g/t	169
NARC300	11m @ 10.52g/t	114
NARC319	3m @ 22.65g/t	78
NARC323	8m @ 18.13g/t	116
NARC327	3m @ 34.75g/t	172
NARC330	10m @ 32.90g/t	167

\* Selection of high grade RC drill intersections reported from Nabanga Project during 2012.

Note – assays are awaited for recently completed diamond drilling program.

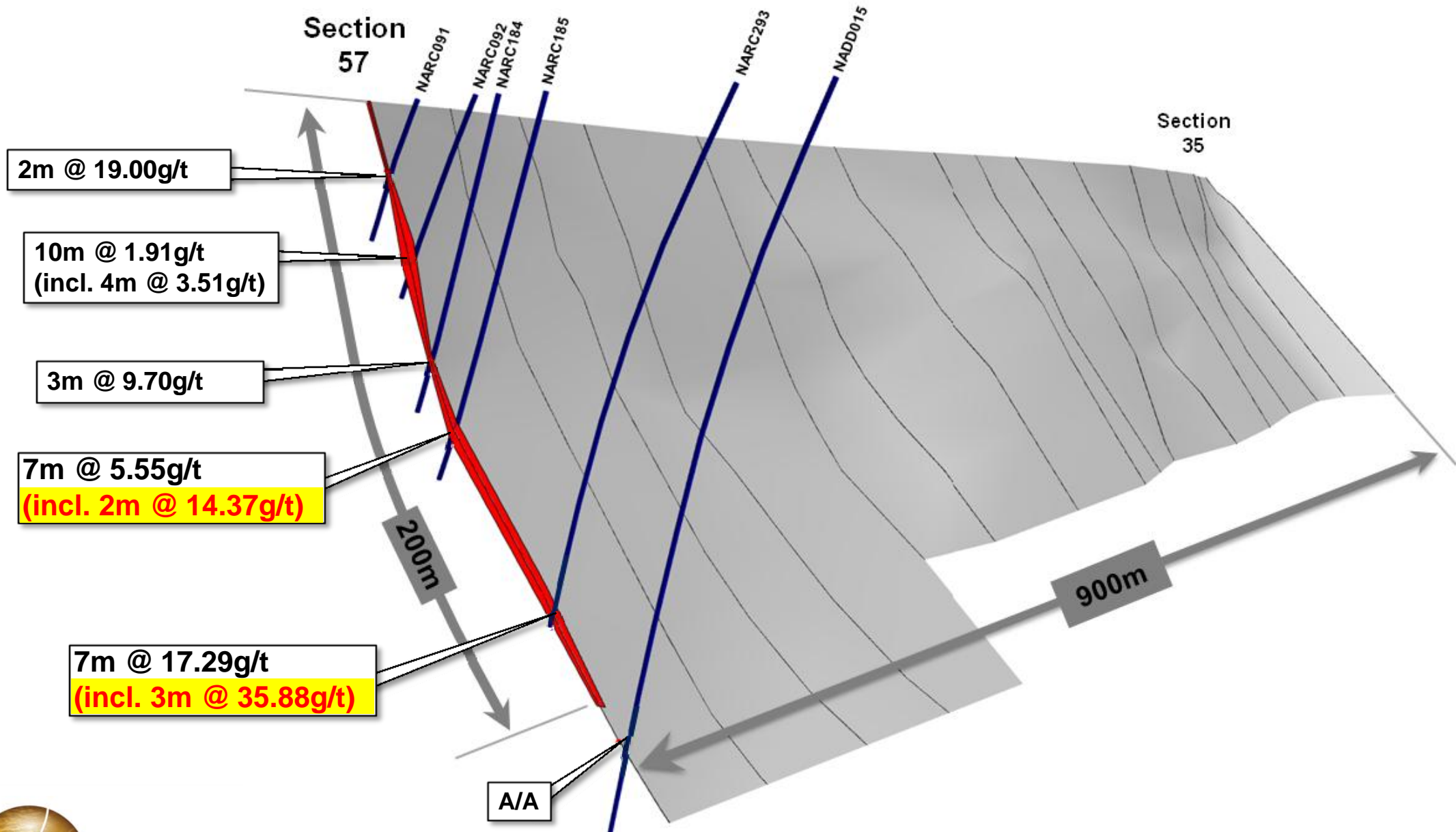


# Nabanga Gold Deposit – Drill Status Plan



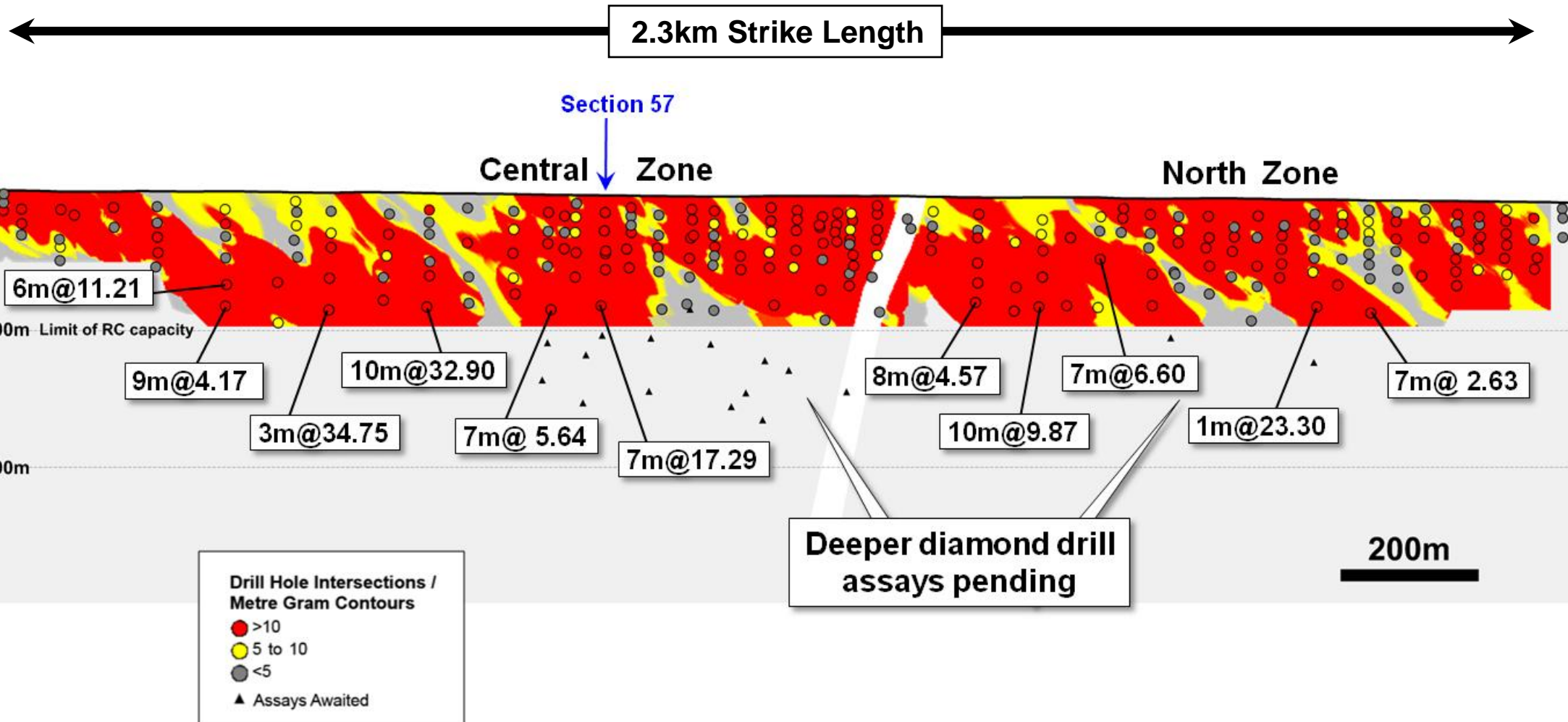
# Nabanga – Cross Section 57

( View looking to the south-west from Central Zone area showing mid-point structure surface )

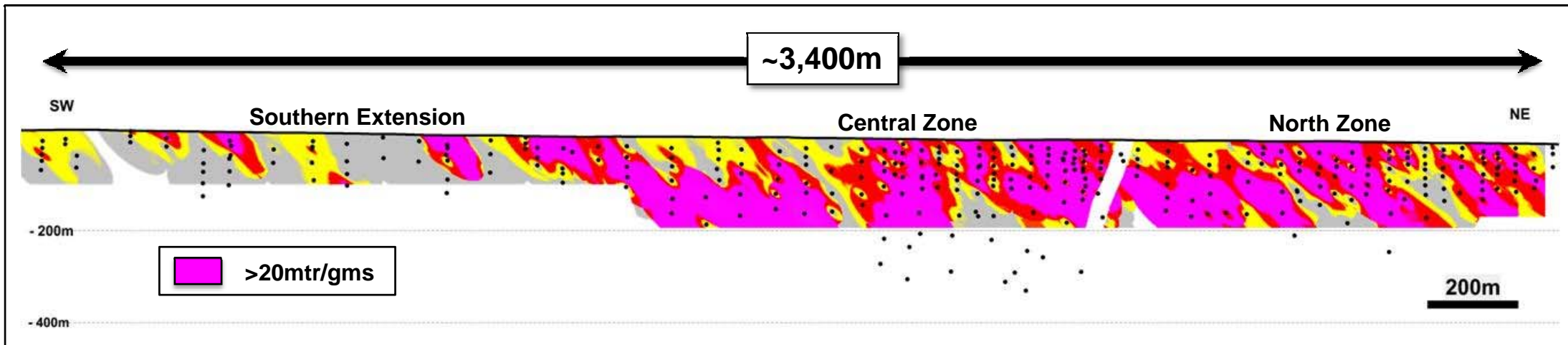


# Nabanga - Longitudinal Section

( Significant high grade gold intersections at the base of current RC drilling – open at depth )

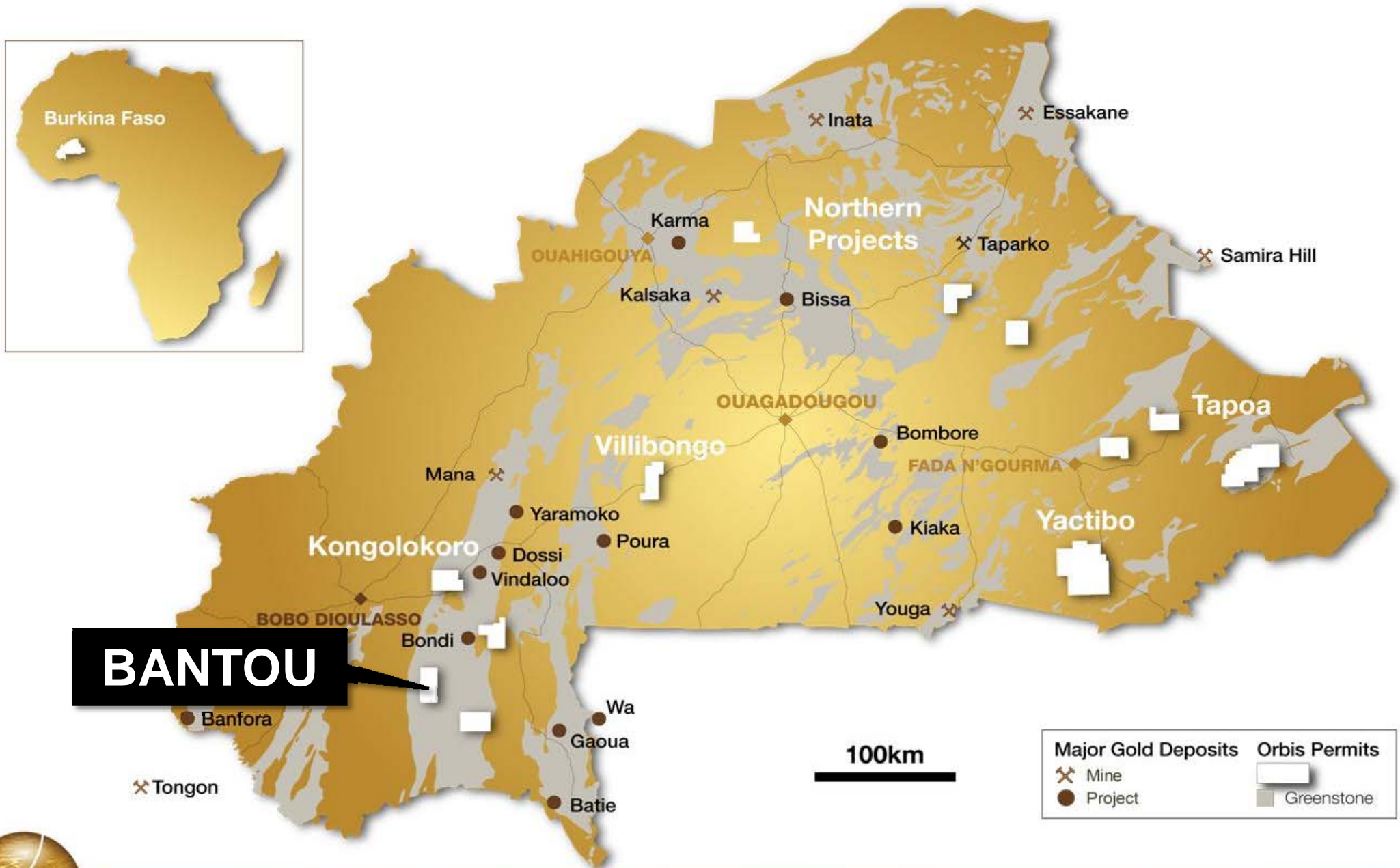


# Nabanga – Forward Program



- Maiden resource estimate in progress
- Phase 1 diamond drill assays awaited
- Development scoping studies (Lycopodium)
- Drilling : strike potential / depth potential  
camp-scale targets  
regional targets (~1,200km<sup>2</sup> permits)

# Bantou – Our Second Gold Discovery



**BANTOU**

Major Gold Deposits		Orbis Permits	
X	Mine	□	
●	Project	■	Greenstone

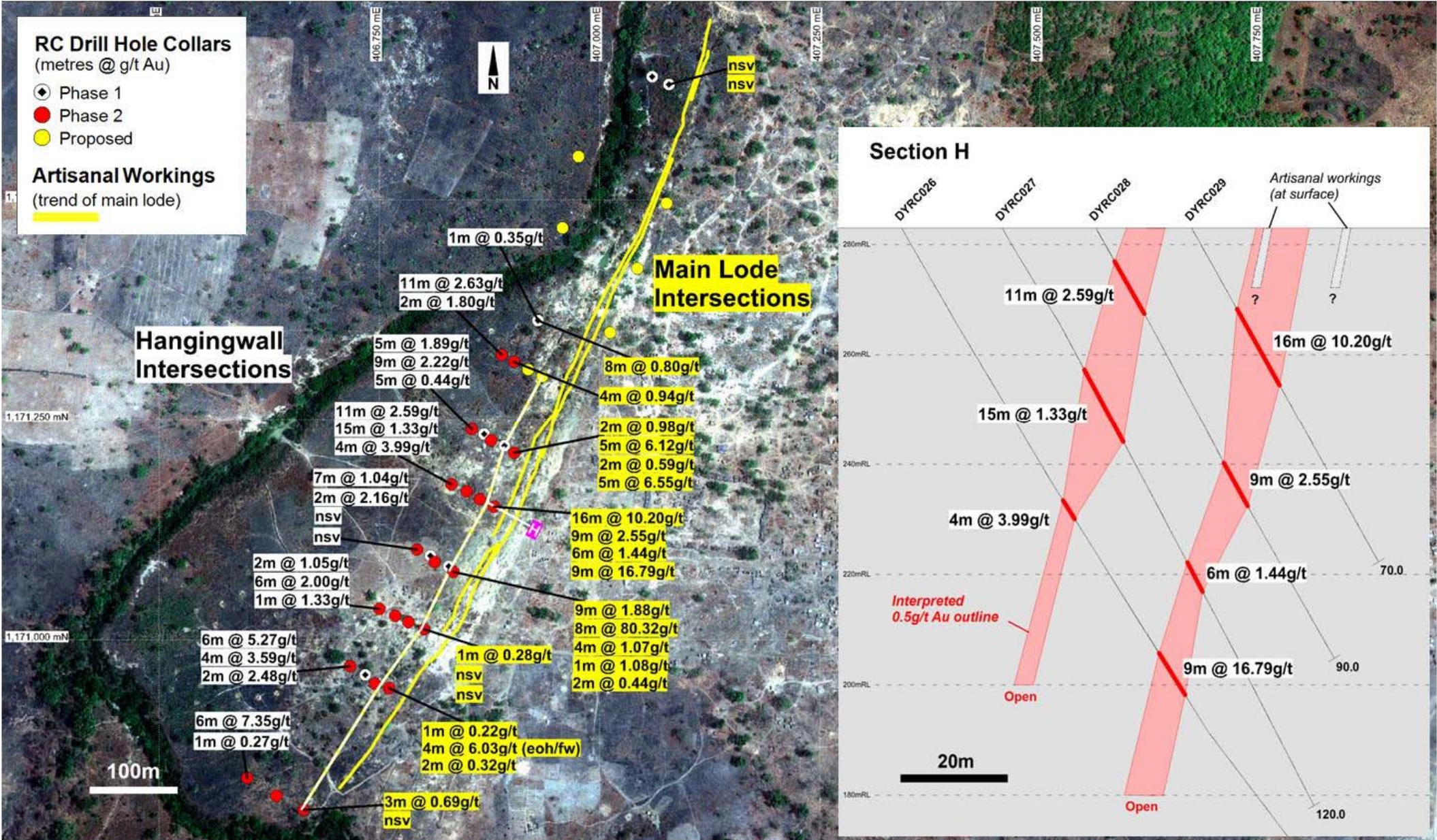


# Bantou – Multiple Quartz Lodes Over a 1km Strike Length



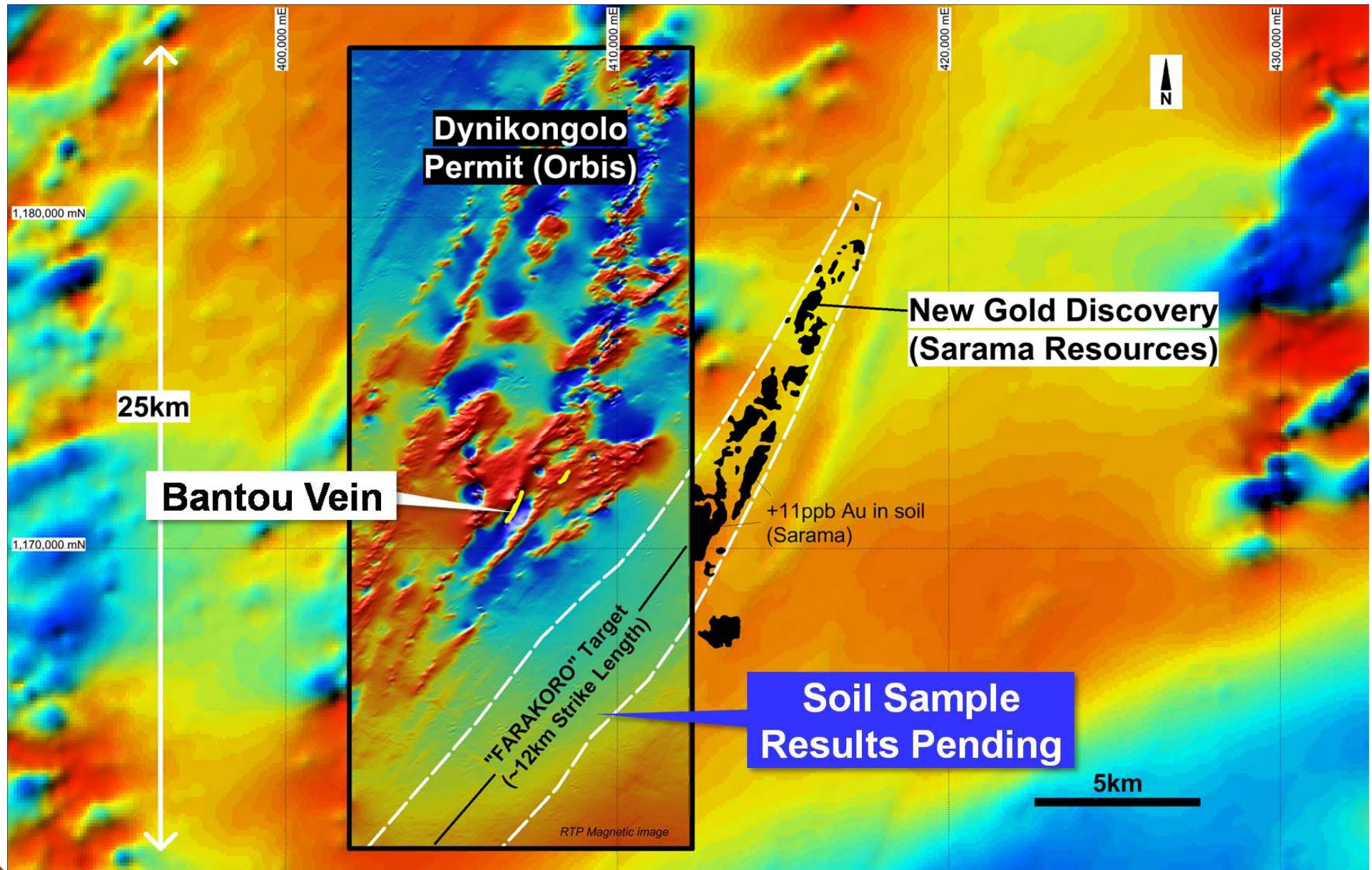
# Bantou – High Grade Near-surface Intersections

( Multiple structures defined / strike extensions to be tested / resource estimate to follow )



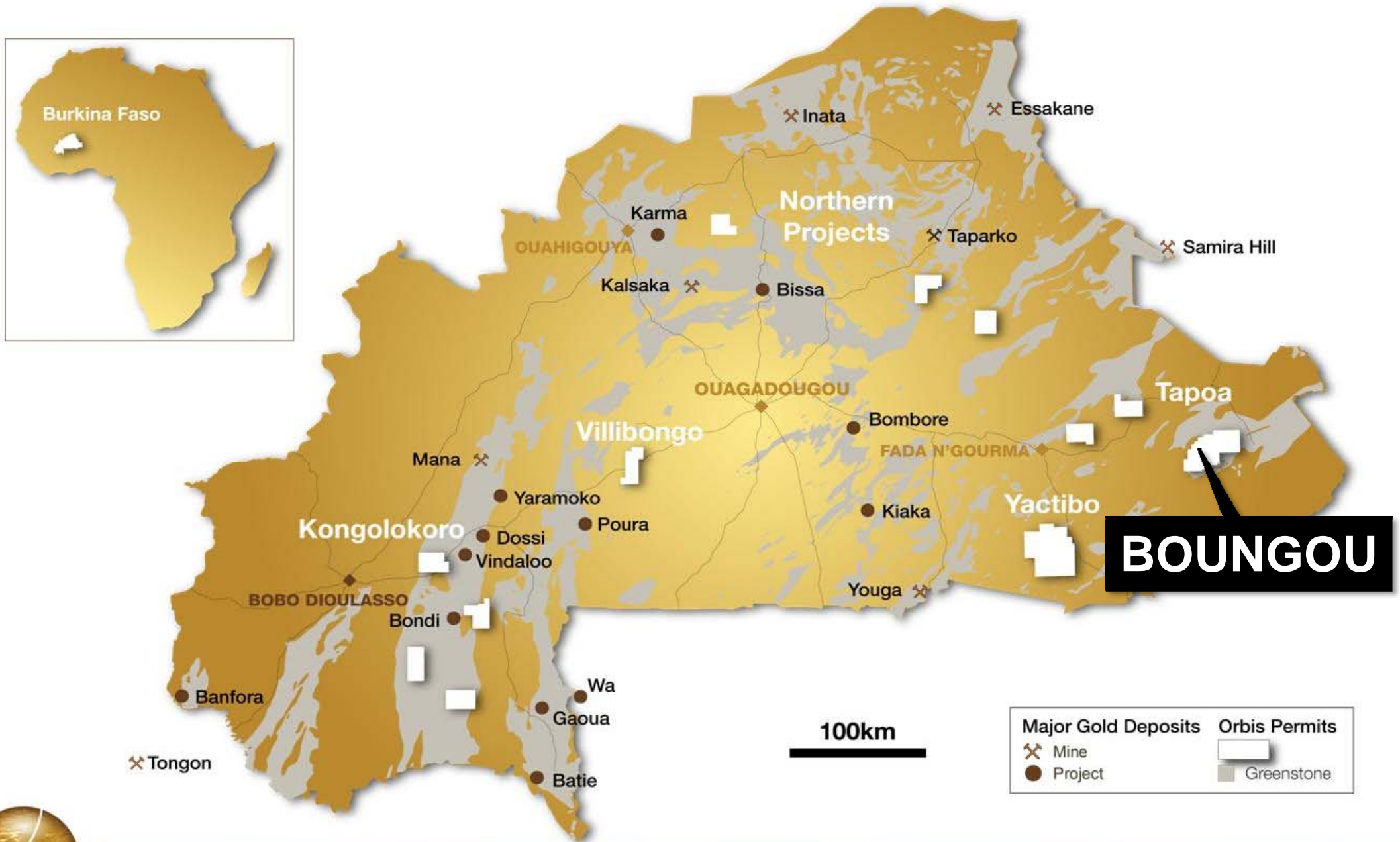
# Bantou – New Regional Gold Targets

( Structural targets defined in geophysics / new third-party gold discovery on adjacent permit )





# Boungou – A Third Gold Discovery



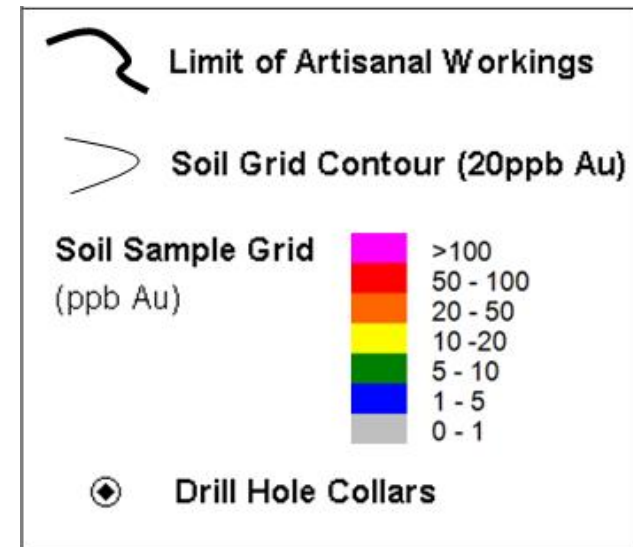
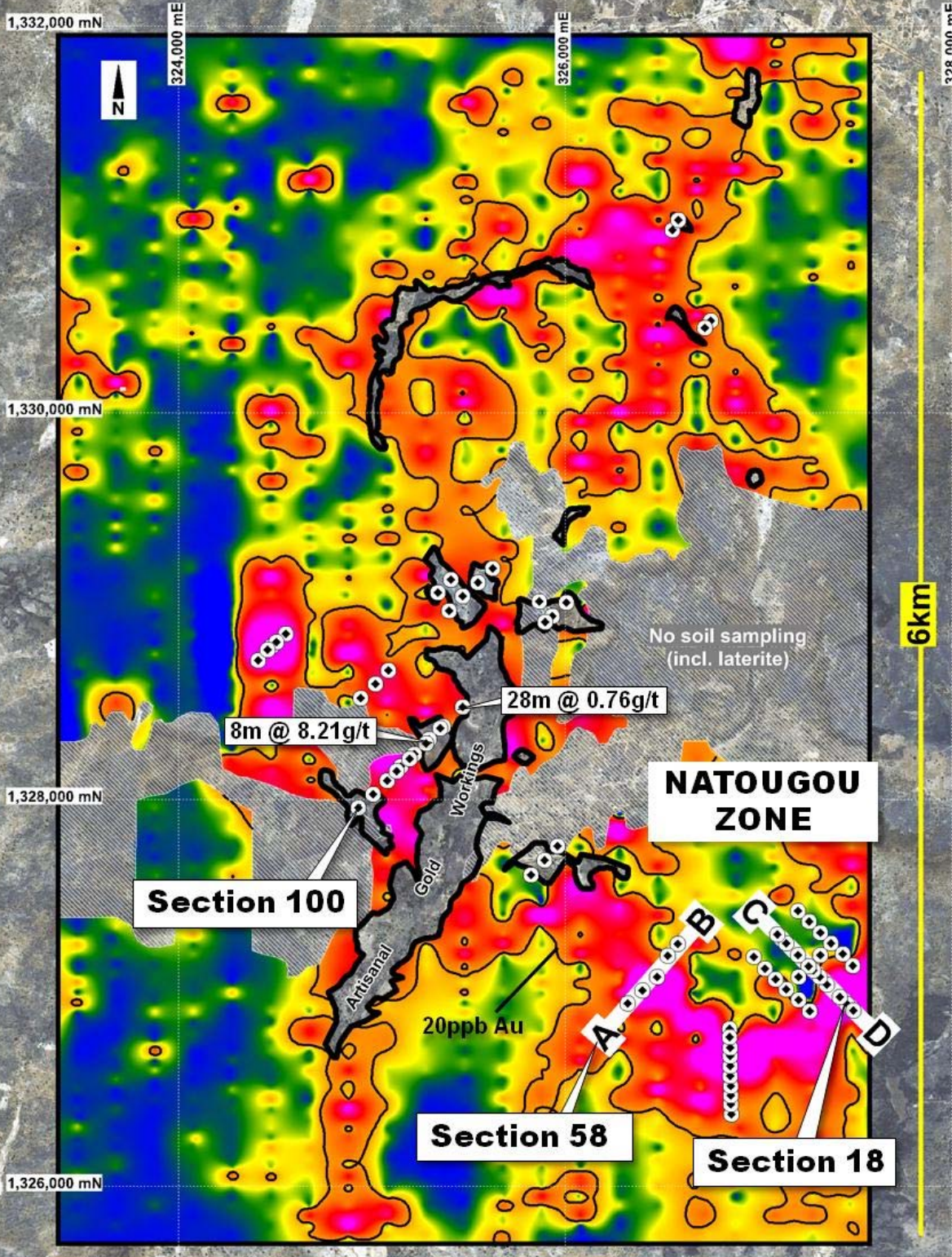
# Boungou – New Gold “Rush” (Feb. 2012)



# Boungou Prospect

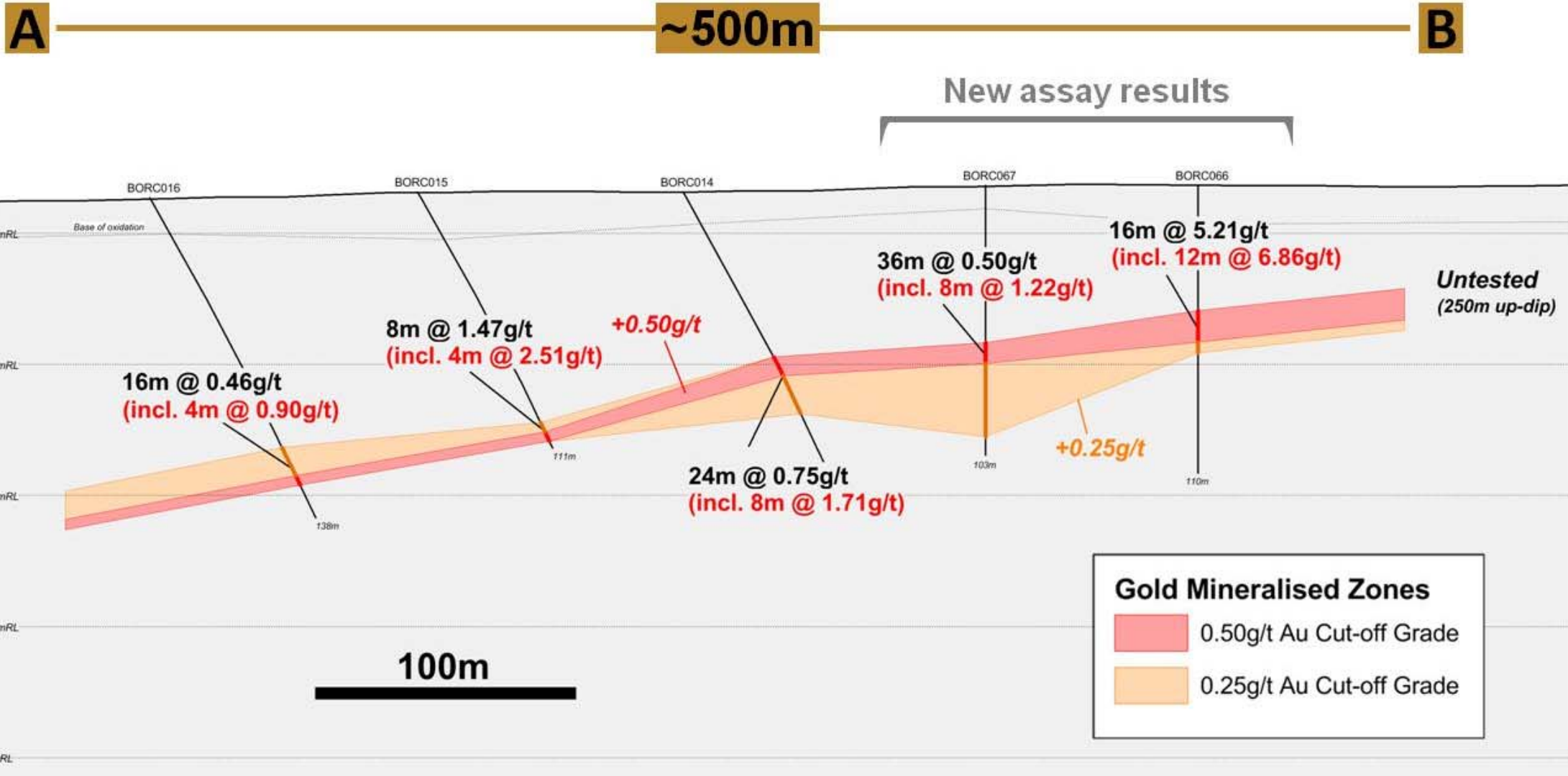
- extensive gold in soil anomalism
- 6.6km x up to 3.7km max. width (@20ppb Au)
- multiple gold trends
- anomalism open in all directions
- includes significant zones of +50ppb gold

## Natougou Zone New Gold Discovery



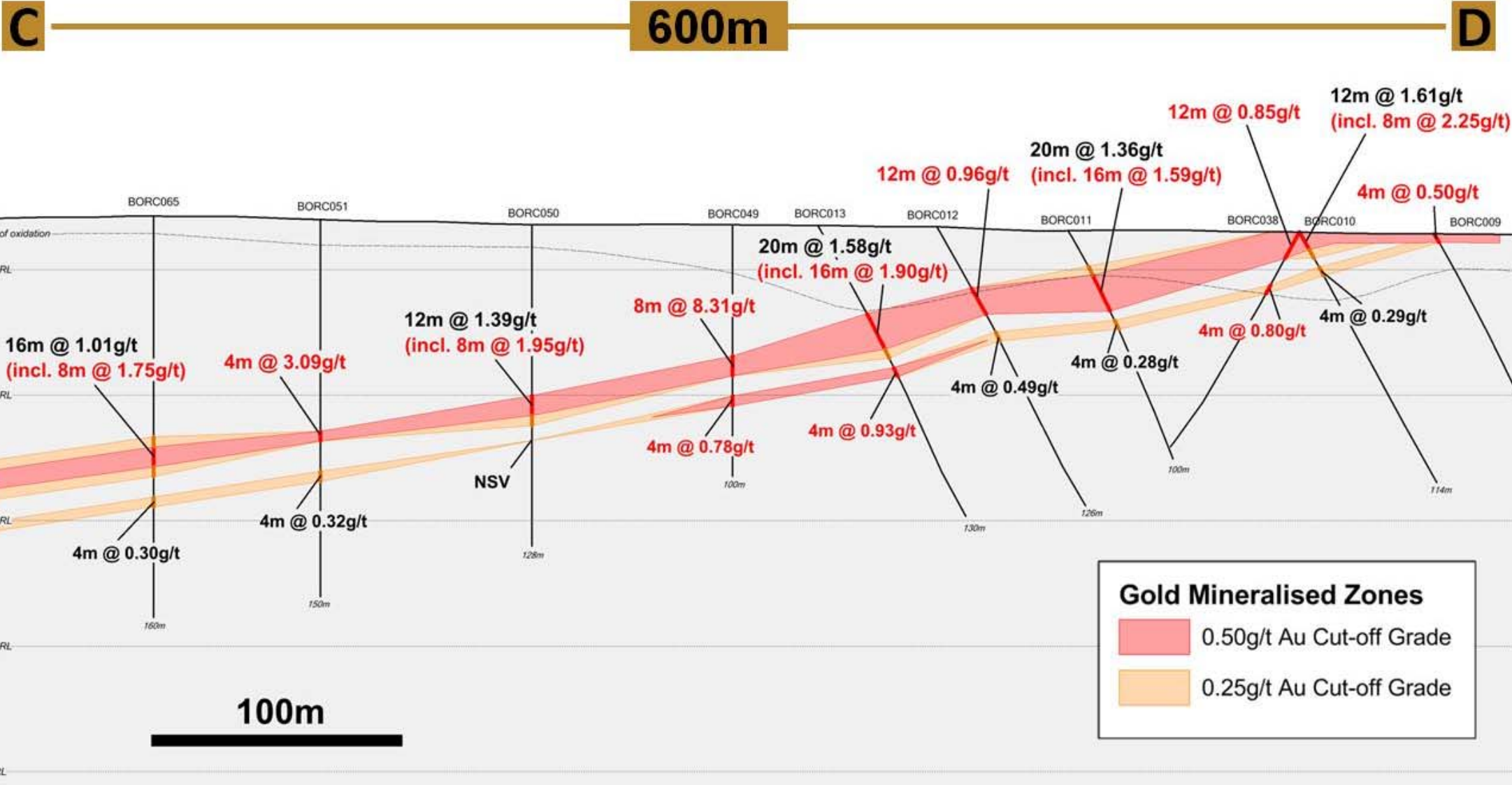
# Natougou Cross Section 58

( +0.5g/t gold mineralisation intersected over 500m in cross section / open up and down-dip )

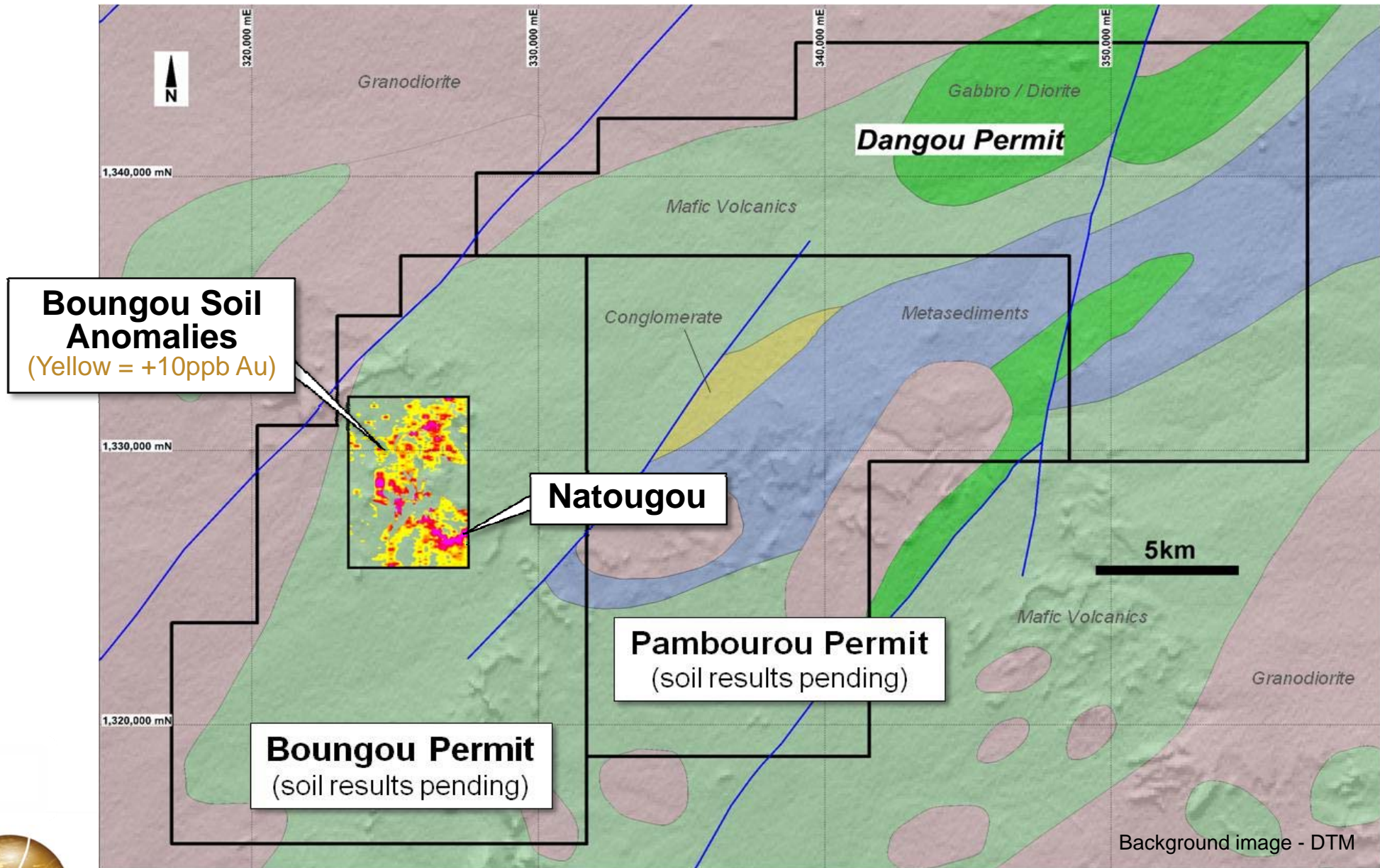


# Natougou Cross Section 18

( +0.5g/t gold mineralisation intersected from surface / shallow 10° dip / open at depth )

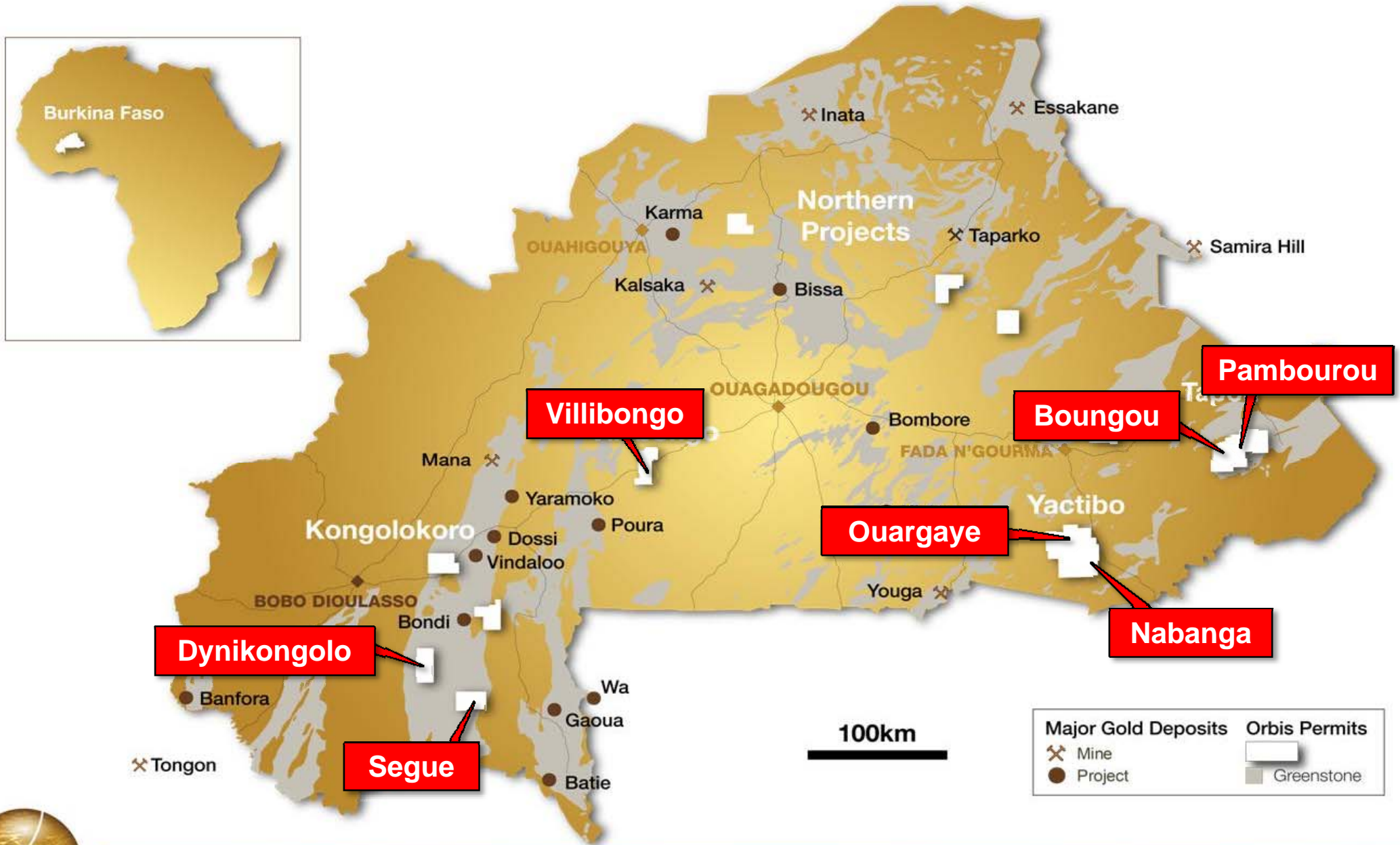


# Boungou - Less than 5% of Broader Project Area Tested to Date



# Regional Soil Sampling Programs

( Soil sample results pending from multiple permits to establish a pipeline of new targets )



# Investment Summary

- Deep project portfolio in a world-class gold province
- Multiple prospects with demonstrated potential for major gold discoveries
- Three gold discoveries in the first 18 months:

**Nabanga** - high grade gold deposit  
- maiden resource estimate pending  
- significant depth/strike potential

**Bantou** - strike/depth extension drilling proposed  
- multiple regional targets

**Boungou** - new discovery announced April 2012  
- large-scale gold system / multiple drill targets

**... and a pipeline of targets from regional exploration**





**ORBIS**GOLD

Contact

**Peter Spiers**  
**Managing Director**  
**+61 (0) 7 3198 3040**  
**+61 (0) 409 407 265**  
**[pspiers@orbisgold.com](mailto:pspiers@orbisgold.com)**  
**[www.orbisgold.com](http://www.orbisgold.com)**

